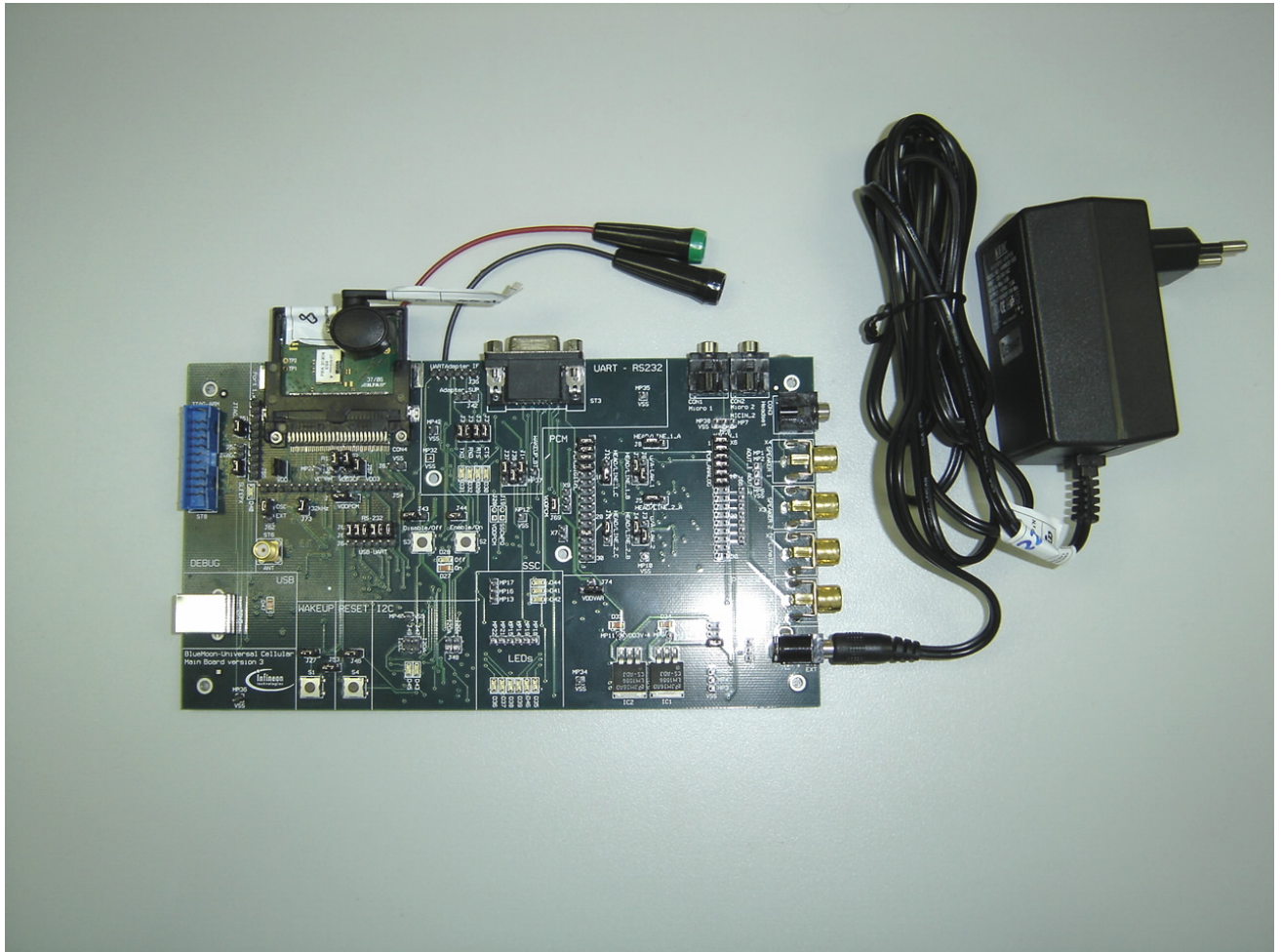


1. Equipment for radiated measurements with the evaluation board (front view)



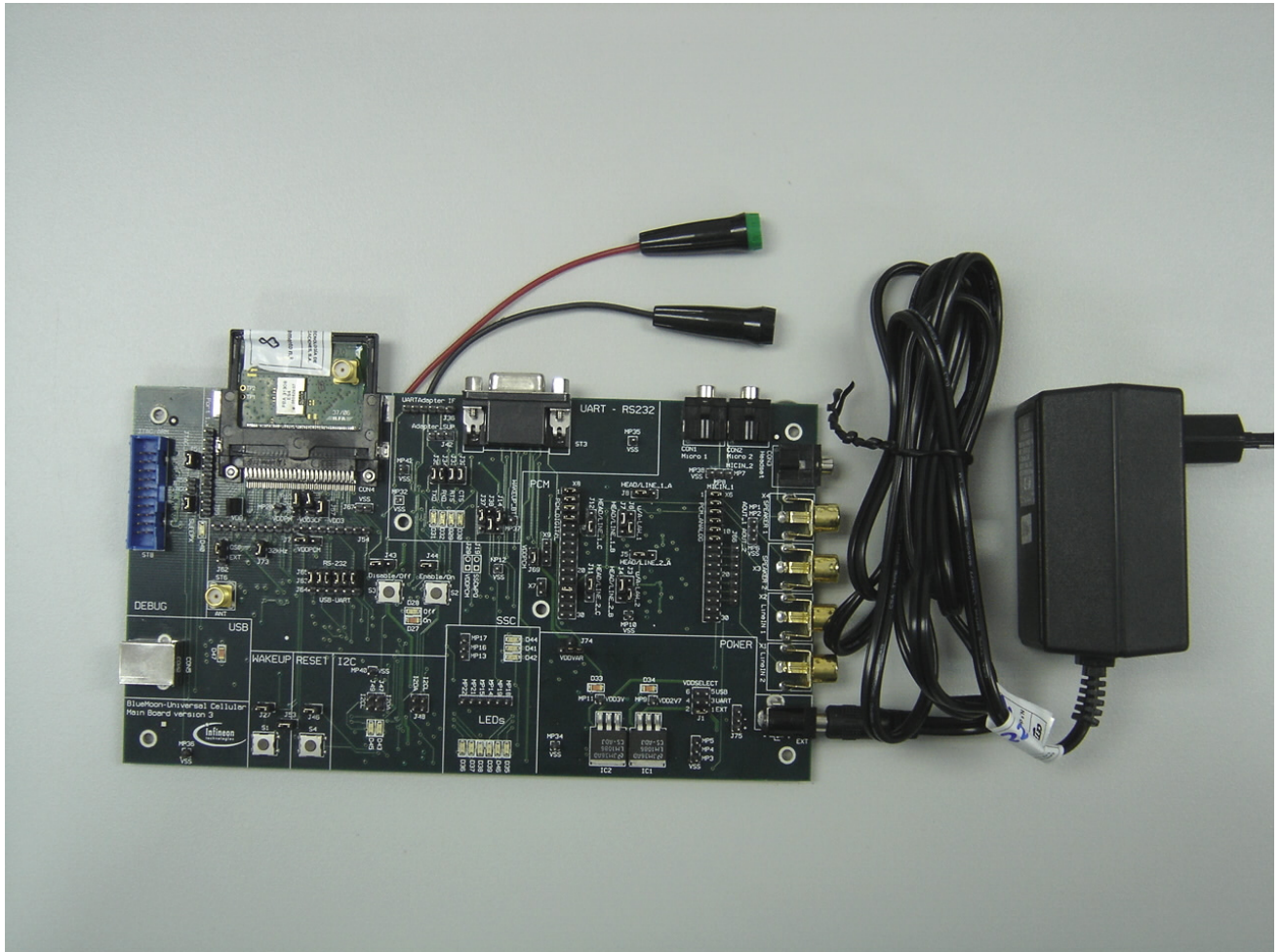
Report No.:
24838RET.101

Date: 2006-12-13

Page: 2 of 8

Annex C

2. Equipment for conducted measurements with the evaluation board (front view)



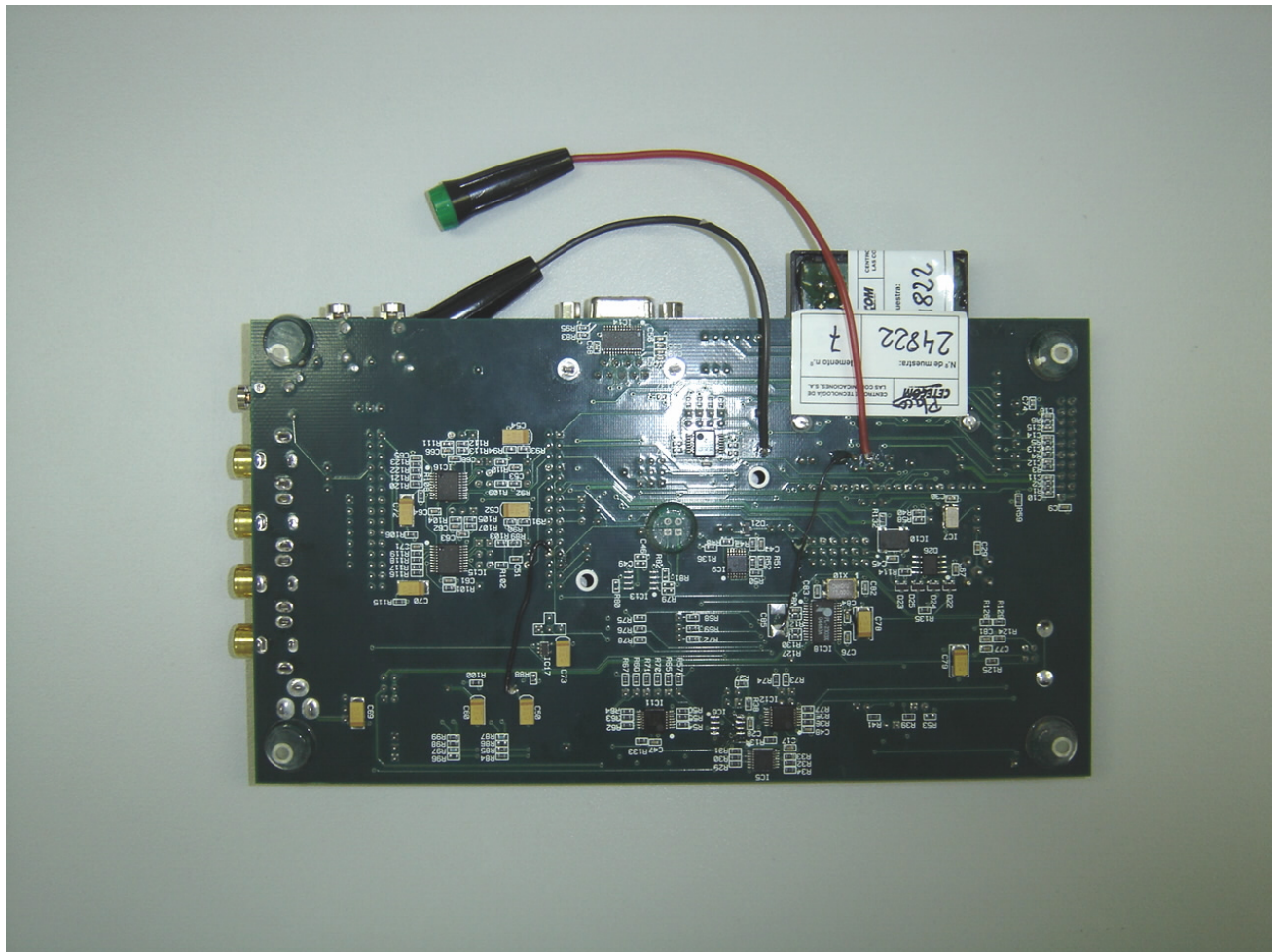
Report No.:
24838RET.101

Date: 2006-12-13

Page: 3 of 8

Annex C

3. Equipment with the evaluation board (back view)



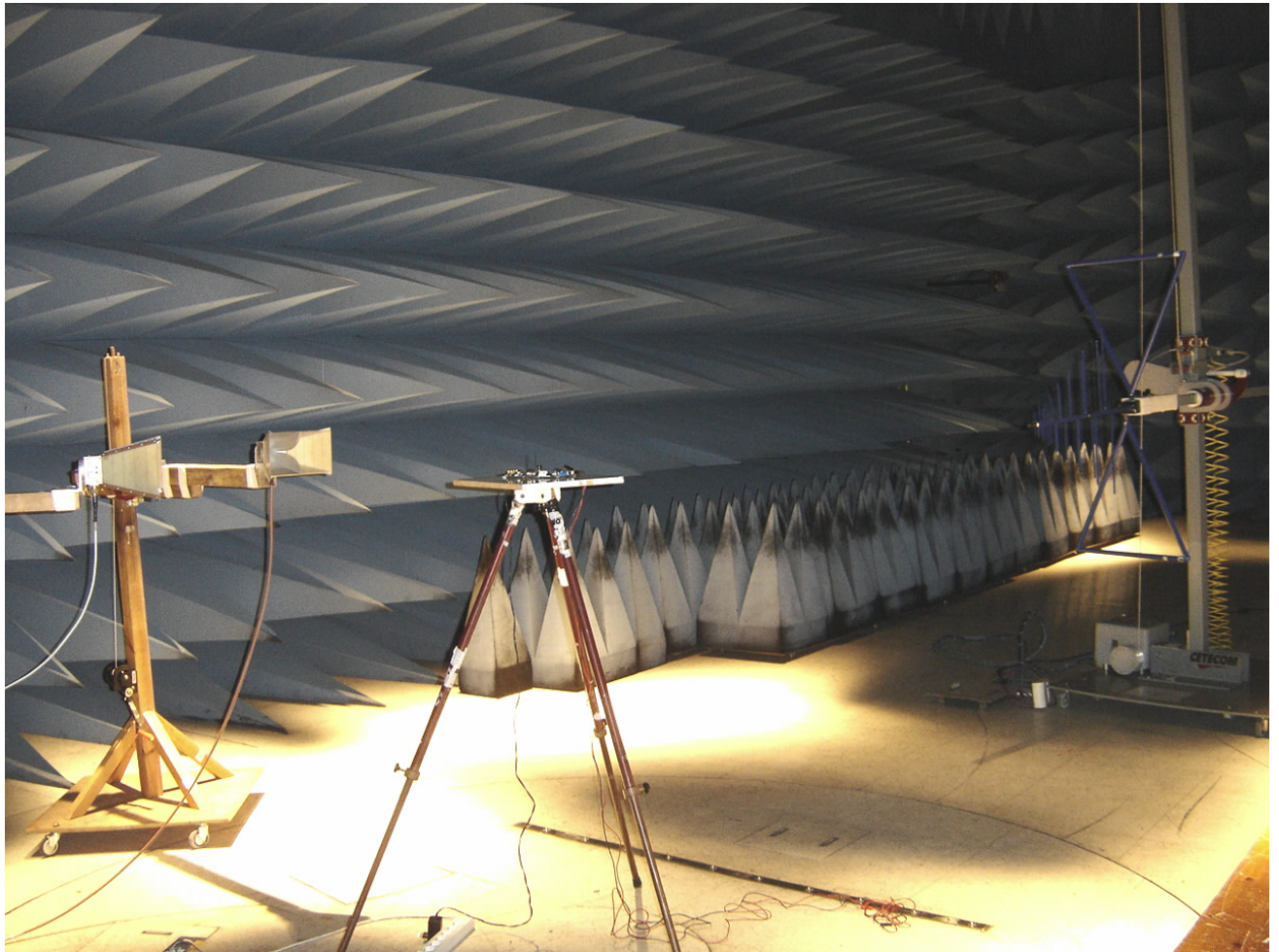
Report No.:
24838RET.101

Date: 2006-12-13

Page: 4 of 8

Annex C

4. General test set-up for radiated measurements.



Report No.:
24838RET.101

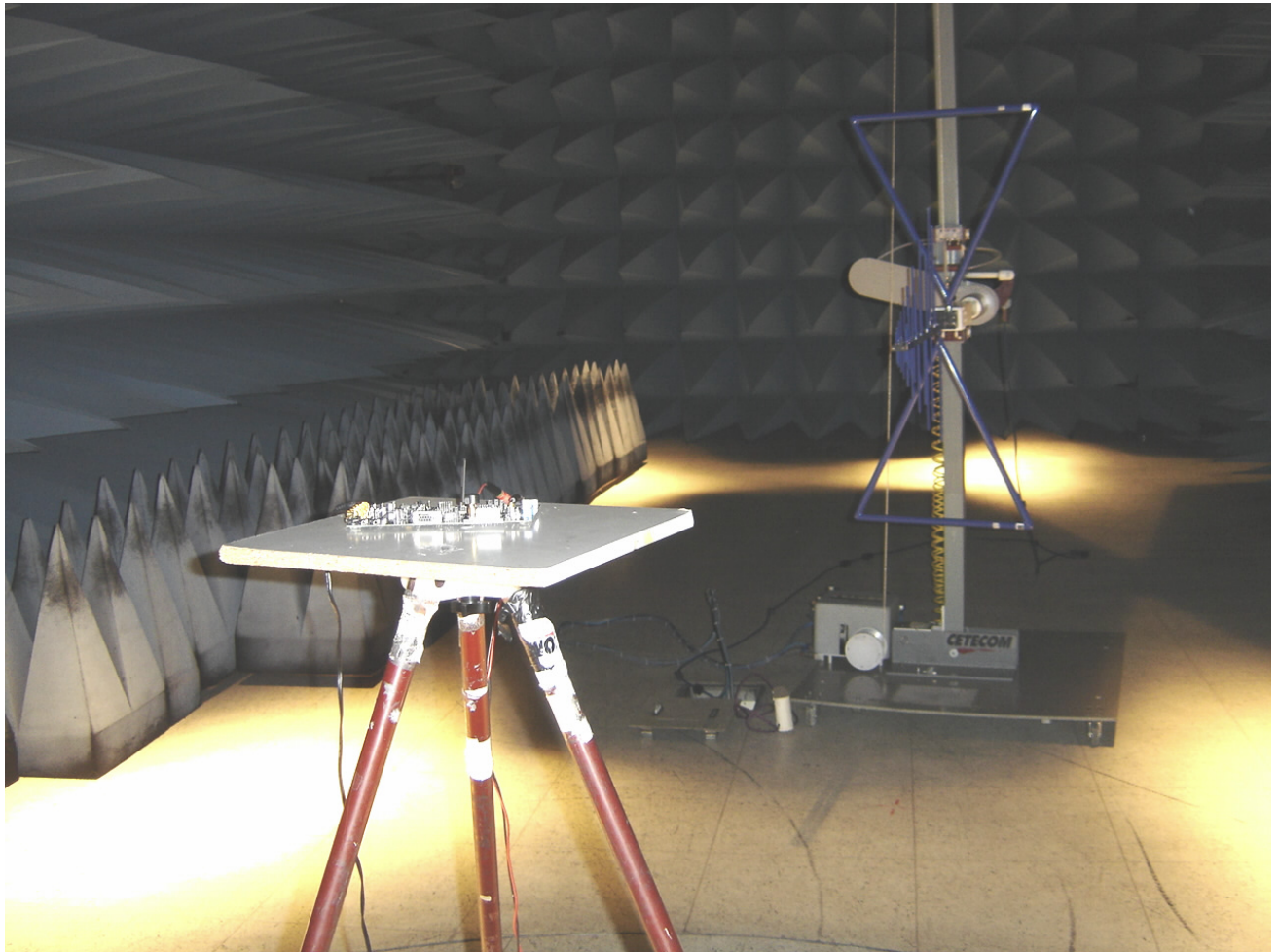
Date: 2006-12-13

FET18_00.DOC

Page: 5 of 8

Annex C

5. Test set-up for radiated measurements below 1 GHz.



Report No.:
24838RET.101

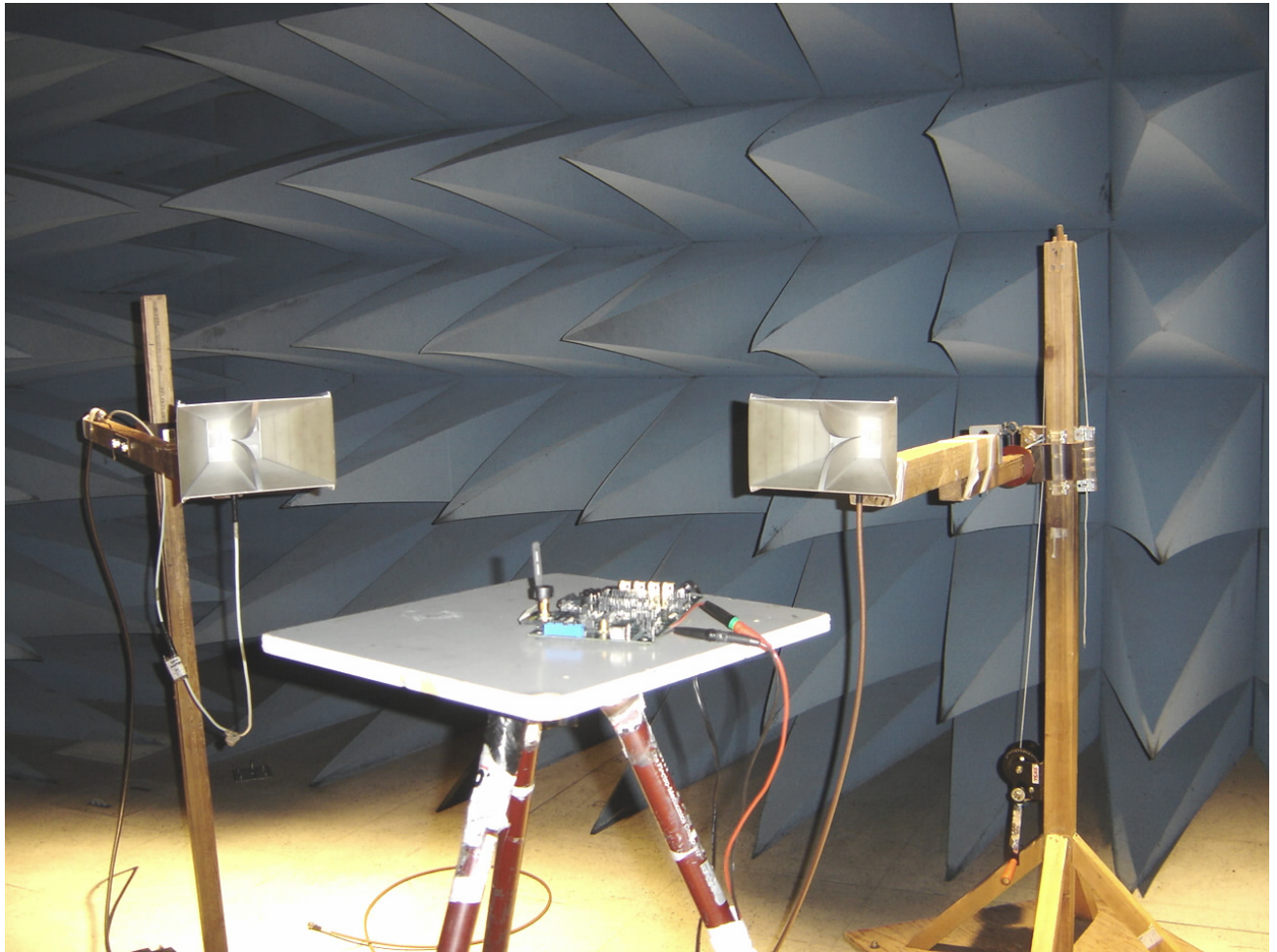
Date: 2006-12-13

FET18_00.DOC

Page: 6 of 8

Annex C

6. Test set-up for radiated measurements above 1 GHz.



Report No.:
24838RET.101

Date: 2006-12-13

FET18_00.DOC

Page: 7 of 8

Annex C

7. Test set-up for RF conducted measurements.



Report No.:
24838RET.101

Date: 2006-12-13

FET18_00.DOC

Page: 8 of 8

Annex C