



Wireless Nutritional Scale

iN-1 SERIES Instructions for Use

DEAR USERS:

Thank you for using our Wireless Nutritional Scale. Please read and keep the manual in order to use the scale better.


ABOUT THE SCALE

This series of products can help you save and keep track of nutritional information on your phone. The scale transfers data to the mobile phone via wireless technology and also can draw the tendency of nutrient intake in order to check the nutrition intake status at any time. You'll get the first step in dietary management after downloading the application and using our wireless scales.

FEATURES

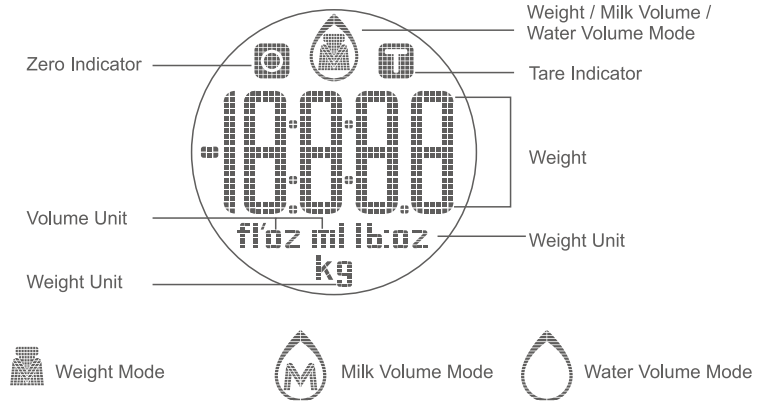
- With high precision strain gauge sensor;
- Low battery power / Overload indication;
- Zero, tare and mode conversion with touch button;
- Wireless function;
- Measure calories, sodium, fat, protein, carbohydrates, cholesterol and dietary fiber;

BATTERY INSTALLATION

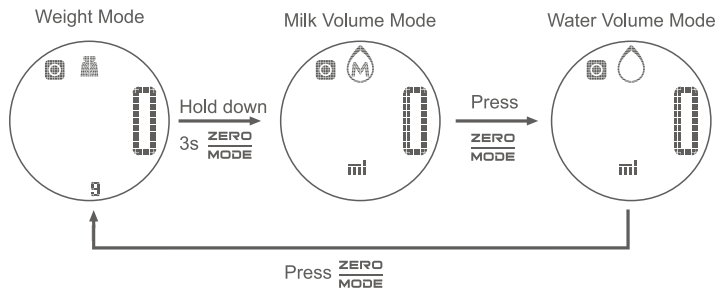
Name	Illustration	Installation
2x1.5V AAA Battery		AAA battery installation Please install battery according to polarity.

Note: Please use corresponding battery. Please remove battery if it is not in use in a long time (more than three months).

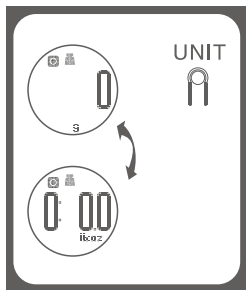
LCD DISPLAY



MODE CONVERSION



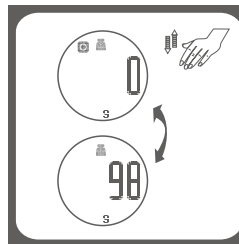
TO CONVERT WEIGHT UNIT



If the scale with both unit systems of metric (kg,g) or imperial (lb:oz) press **UNIT** button to convert between two systems. (You'll see the **UNIT** button at the bottom of the product, as shown left.)

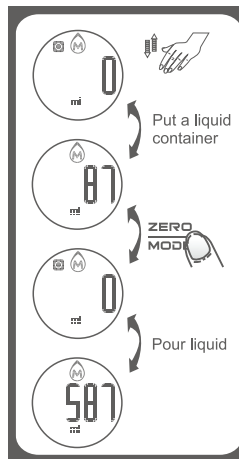
Remark: The unit system of scale depends on sales destination or the requirement of distributor.

TO START WEIGHING



Weighing Mode

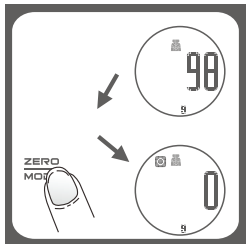
1. Place the scale on a solid and flat surface.
2. Press the scale platform to turn on.
3. Wait until LCD shows "0". Press **ZERO MODE** button to convert to weighing mode.
4. Load weighing object on scale (or bowl) to start weighing. LCD will show the weight reading.
5. If use a bowl, press **ZERO MODE** button after placing the bowl.



Volume Indication Mode

1. Place the scale on a solid and flat surface.
2. Press the scale to turn on.
3. Wait until LCD shows "0". Press **ZERO MODE** button to convert to volume indication mode.
4. Put a liquid container onto the scale platform. LCD shows weight of container.
5. Press **ZERO MODE** button to zero or tare weight.
6. Pour liquid(water or milk) into the container, LCD shows the volume of the liquid.

■ "ZERO" OR "TARE" FUNCTION



To weigh different loads consecutively without removing loads from the scale. (Put first load on the scale, get weight reading. Press **ZERO MODE** button to reset the LCD reading to "0" before adding next load. You can repeat this operation.)

Condition 1: "ZERO" function

When total sum of all loads on scale \leq 4% of scale's max. weight capacity.

- (4%=20g when capacity is 500g
- 40g when capacity is 1kg
- 80g when capacity is 2kg
- 200g when capacity is 5kg)

LCD will show "0g" each time **ZERO MODE** is pressed. It means ZERO function is activated. Max. weight capacity remains unchanged.

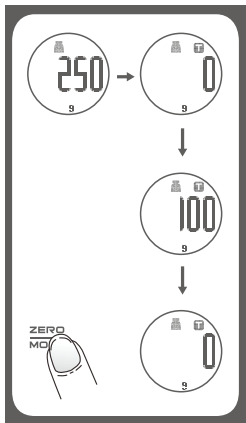
Condition 2: "TARE" function

When total sum of all loads on scale $>$ 4% of scale's max. weight capacity.

- (4%=20g when capacity is 500g
- 40g when capacity is 1kg
- 80g when capacity is 2kg
- 200g when capacity is 5kg)

LCD will show "0g" and "T" each time **ZERO MODE** is pressed. It means TARE function is activated. Max. Weight capacity is reduced by total weight of all loads.

Under this condition: By pressing **ZERO MODE**, you can see the total weight of all loads on the scale. If you want to weigh more loads, just press **ZERO MODE** to reset LCD reading to '0' again.



■ AUTO SHUT OFF (POWER SAVING MODE)

Auto shut-off occurs if display shows '0' or shows the same weight reading for a couple of minutes.

■ INDICATION

Warning indication	Name	Instructions and methods
Err	OVERLOAD INDICATION	Scale overload the max weight (Max weight is indicated on the scale.) Please step off to avoid damage.
Lo	LOW BATTERY INDICATION	Battery power is low. Please replace new battery.

■ CLEANING AND CARE

1. Clean the scale with a slightly damp cloth. DO NOT immerse the scale in water or use chemical/abrasive cleaning agents.
2. All plastics parts should be cleaned immediately after contact with fats, spices, vinegar and strongly flavored/colored foods. Avoid contact with acids citrus juices.
3. Always use the scale on a solid, flat surface.
4. Do not knock, impact and drop products.
5. This product is a precision instrument, please be careful.
6. Place in a cool dry place
7. Check the battery if the scale cannot be turned on.
8. Designed for family and non-commercial.

■ FCC

Caution: The user is cautioned that changes or modifications not expressly approved by the party responsible for compliance could void the user's authority to operate the equipment.

This device complies with Part 15 of the FCC Rules. Operation is subject to the following two conditions: (1) this device may not cause harmful interference, and (2) this device must accept any interference received, including interference that may cause undesired operation.

NOTE: This equipment has been tested and found to comply with the limits for a Class B digital device, pursuant to Part 15 of the FCC Rules. These limits are designed to provide reasonable protection against harmful interference in a residential installation. This equipment generates, uses and can radiate radio frequency energy and, if not installed and used in accordance with the instructions, may cause harmful interference to radio communications. However, there is no guarantee that interference will not occur in a particular installation. If this equipment does cause harmful interference to radio or television reception, which can be determined by turning the equipment off and on, the user is encouraged to try to correct the interference by one or more of the following measures:

- Reorient or relocate the receiving antenna.
- Increase the separation between the equipment and receiver.
- Connect the equipment into an outlet on a circuit different from that to which the receiver is connected.
- Consult the dealer or an experienced radio/TV technician for help.

■ When test standard is FCC section 15.247 or 15.407 (such Bluetooth, Wifi) Mobile Device

(a device designed to generally be used at a separation distance of at least 20 centimeters is normally maintained between the transmitter's radiating structure(s) and the body of the user)

FCC Radiation Exposure Statement:

This equipment complies with FCC radiation exposure limits set forth for an uncontrolled environment. This equipment should be installed and operated with a minimum distance of 20cm between the radiator and your body.

This transmitter must not be co-located or operating in conjunction with any other antenna or transmitter.

- Reorient or relocate the receiving antenna.
- Increase the separation between the equipment and receiver.
- Connect the equipment into an outlet on a circuit different from that to which the receiver is connected.
- Consult the dealer or an experienced radio/TV technician for help.

Portable Device (a device designed to generally be used at a separation distance of within 20 centimeters is normally maintained between the transmitter's radiating structure(s) and the body of the user)

FCC Radiation Exposure Statement:

This equipment complies with FCC radiation exposure limits set forth for an uncontrolled environment. This transmitter must not be co-located or operating in conjunction with any other antenna or transmitter.

■ HOW TO CONFIGURE AND USE THE APPLICATION

1. Get the application

At the “App Store” or “Google Play”, search keyword “KitchenIQ Food” to download our application.

2. Wireless settings:

- | | |
|---|---|
| a. Make sure that the wireless is turned on before use | Requirements for mobile devices:
Wireless version: Wireless 4.0 or above |
| b. If not enables, please go to the “Settings<Wireless” menu to turn it on. | Apple system: iPhone 4S or later, iOS 6.0 or later |
| c. Press the scale platform to turn it on | Android system: Android 4.3 or later |

■ FAQ

The application can't get the data from the scale

- Verify that the wireless icon in weighing interface is lit.
- Check if the wireless function on an electronic device is on.
- Confirm the scale's power is on and also in the valid range of signal.
- Replace the battery if the battery power is not sufficient.
- Restart the application.
- Reboot the phone and re-establish a wireless connection.

Wireless connection failed

- Confirm that only one electronic device is connected to wireless scales.
- Confirm your phone's wireless version is 4.0 or later.

* For more features, please refer to the software instructions in the Application.

Work smarter in the Kitchen!

Look for other KitchenIQ tools at a retailer near you and follow us on Facebook, Instagram, Twitter and Pinterest.





Smith's Consumer Products, Inc.
(+1) 501.321.2244
www.kitcheniq.com
Hot Springs, AR 71913-8414 USA



RoHS



The product picture is indicative only. Appearance specifications please in kind prevail.

15iN-001C R0
C13406