

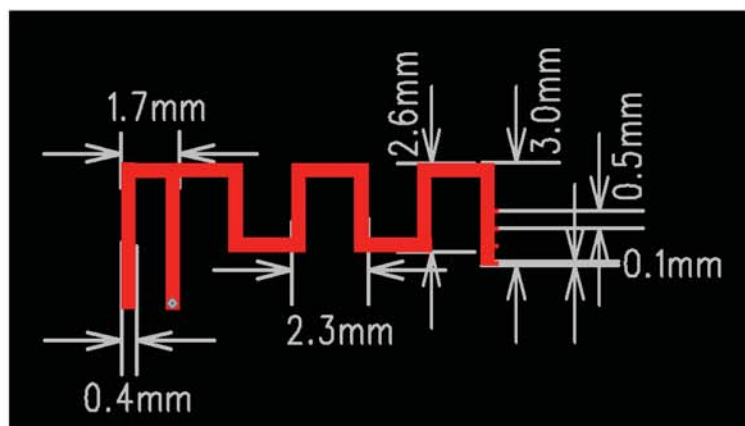
# Antenna Specification

## Specifications

### Summary

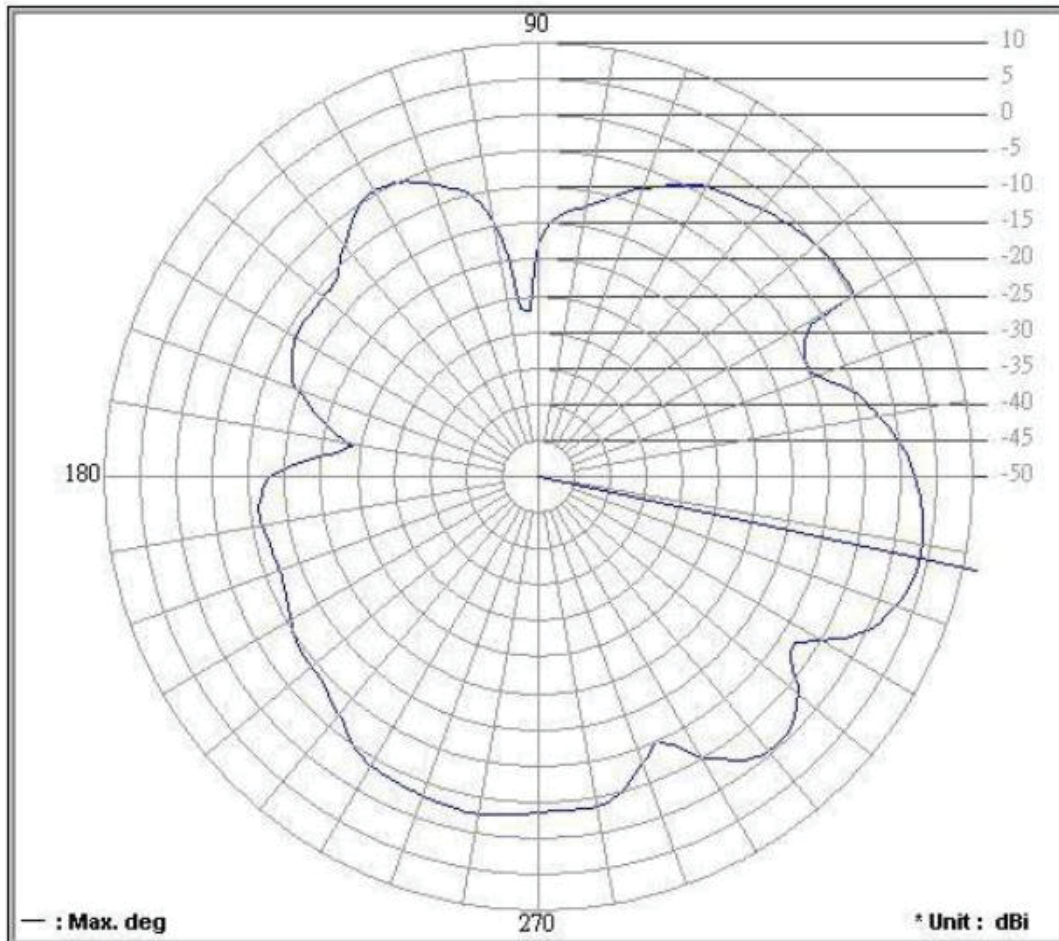
ITEM	SPEC.	
Center Frequency	2402 MHz 2440 MHz 2480 MHz	3.85 dBi 3.18 dBi 2.80 dBi
MAX. GAIN	3.85 dBi	
Polarization	Horizontal	
Azimuth Beam Pattern	Omni-directional	
Impedance	50 $\Omega$	
Antenna Length	6.6 mm	

## Antenna Photo & Length



# 1.Main antenna : 2402 MHz

## 1.1 Horizontal



Frequency (MHz) : **2402.00**      Antenna Polarity : **Horizontal**      Average Gain (dB) : **-3.64**

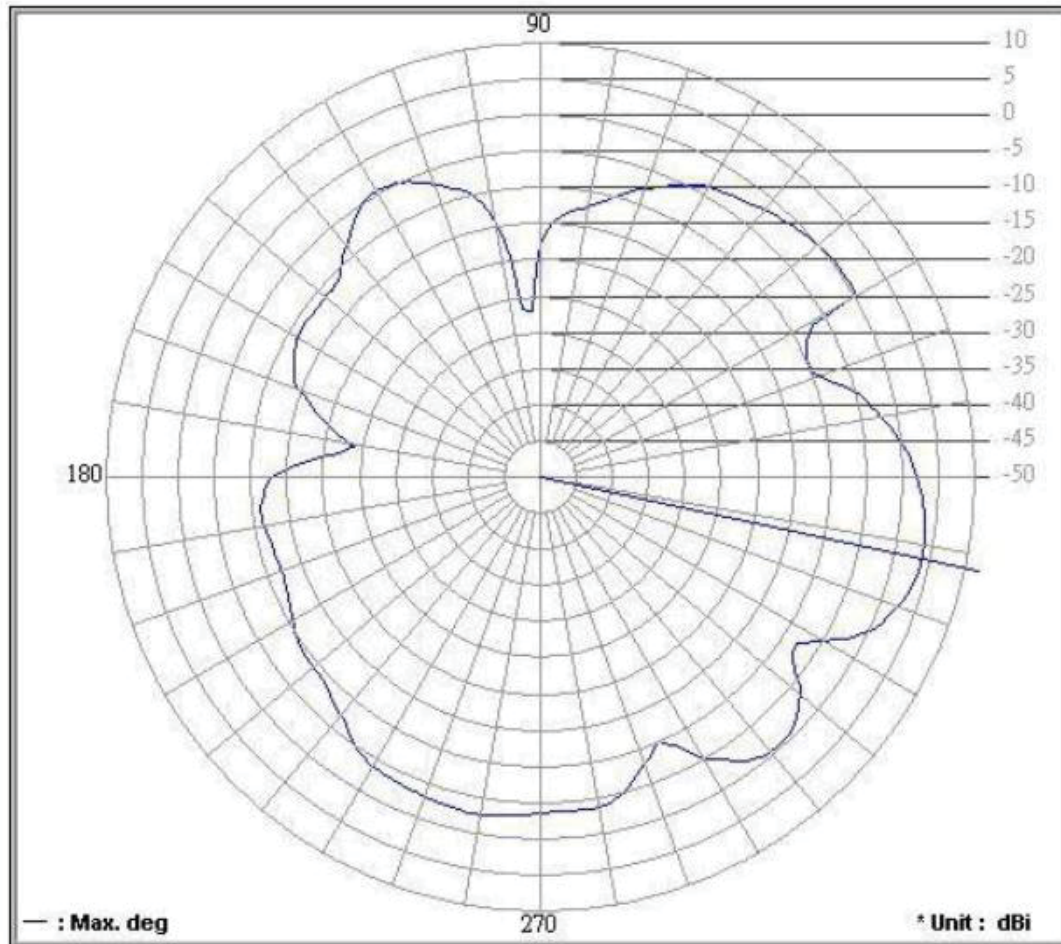
Maximum Gain (dB) : **3.85**      Maximum Gain (degree) : **348**

Minimum Gain (dB) : **-27.08**      Minimum Gain (degree) : **93**

C:\Antenna Pattern V5.0\Graph\0818\08180019.png

# 1.Main antenna : 2402 MHz

## 1.1 Horizontal



Frequency (MHz) : **2402.00**

Antenna Polarity : **Horizontal**

Average Gain (dB) : **-3.64**

Maximum Gain (dB) : **3.85**

Maximum Gain (degree) : **348**

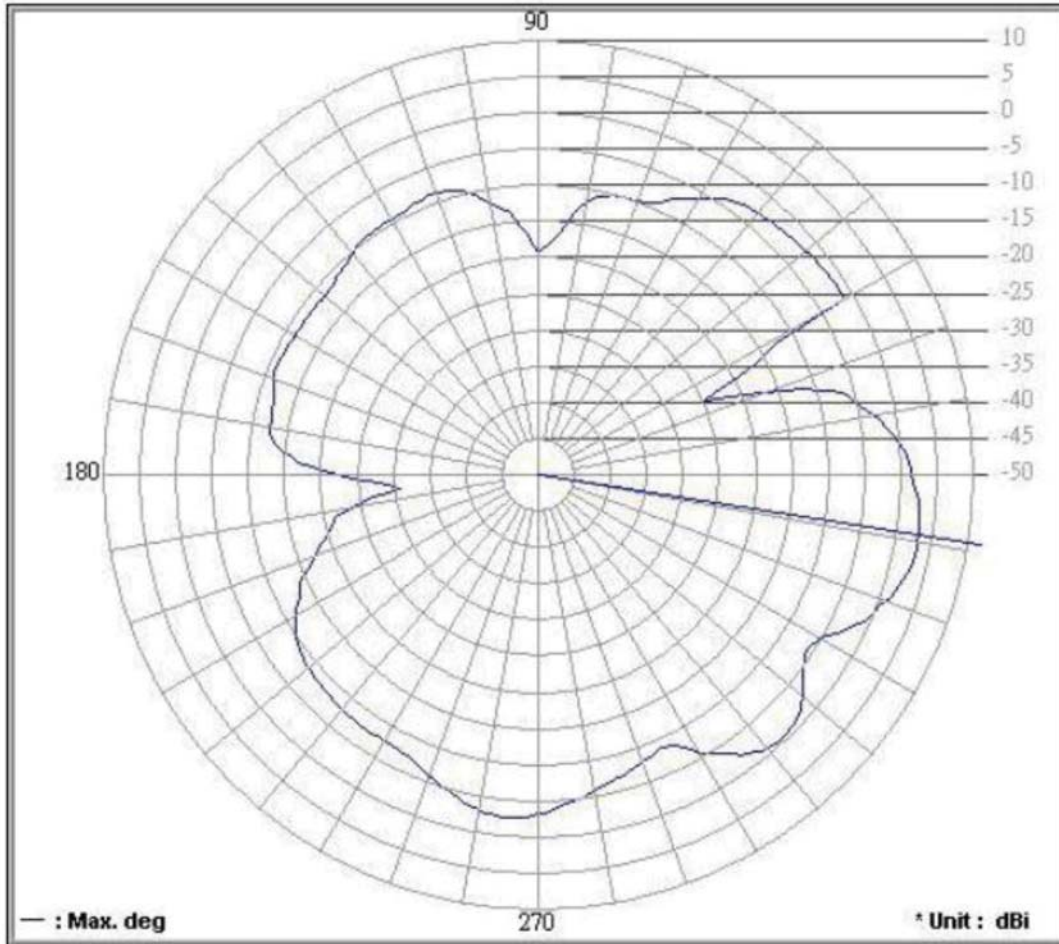
Minimum Gain (dB) : **-27.08**

Minimum Gain (degree) : **93**

C:\Antenna Pattern V5.0\Graph\0818\08180019.png

## 2. Main antenna : 2440 MHz

### 2.1 Horizontal



Frequency (MHz) : **2440.00**

Antenna Polarity : **Horizontal**

Average Gain (dB) : **-4.64**

Maximum Gain (dB) : **3.18**

Maximum Gain (degree) : **351**

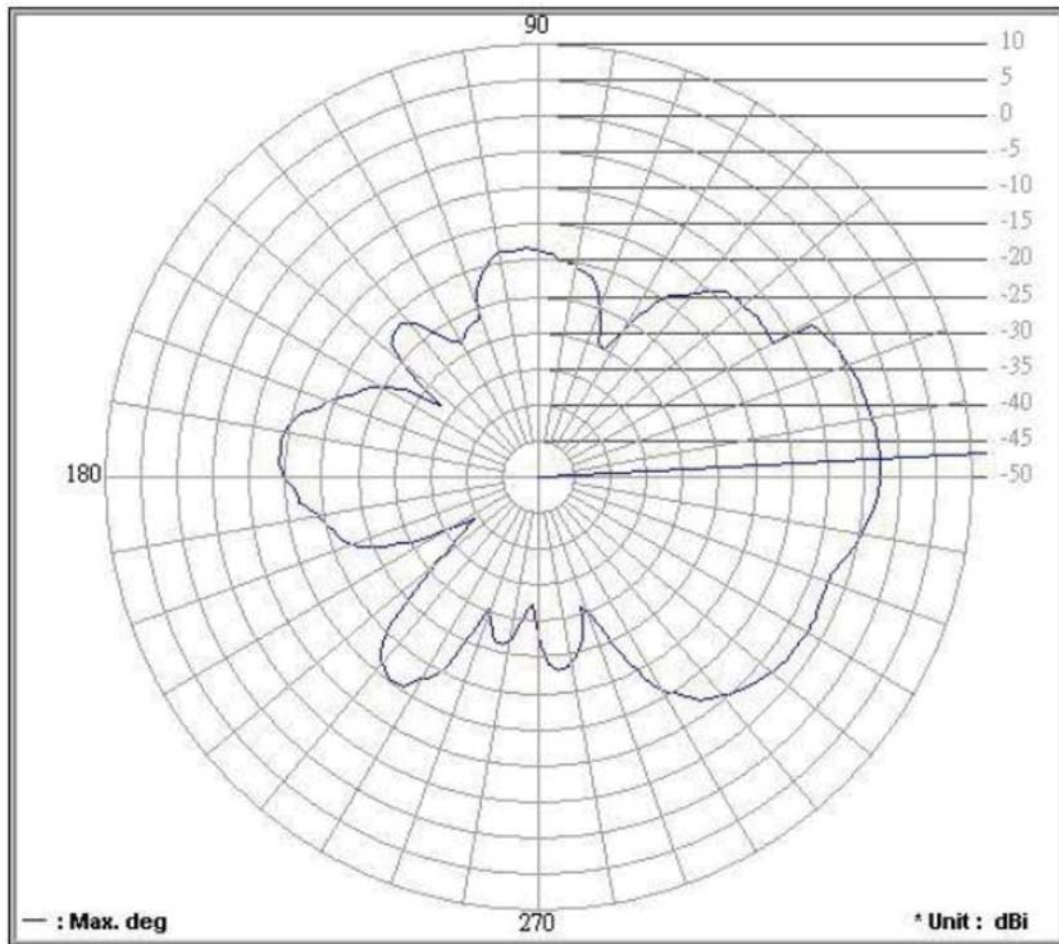
Minimum Gain (dB) : **-30.92**

Minimum Gain (degree) : **186**

C:\Antenna Pattern V5.0\Graph\0818\08180020.png



## 2.2 Vertical



Frequency (MHz) : **2440.00**      Antenna Polarity : **Vertical**      Average Gain (dB) : **-11.06**

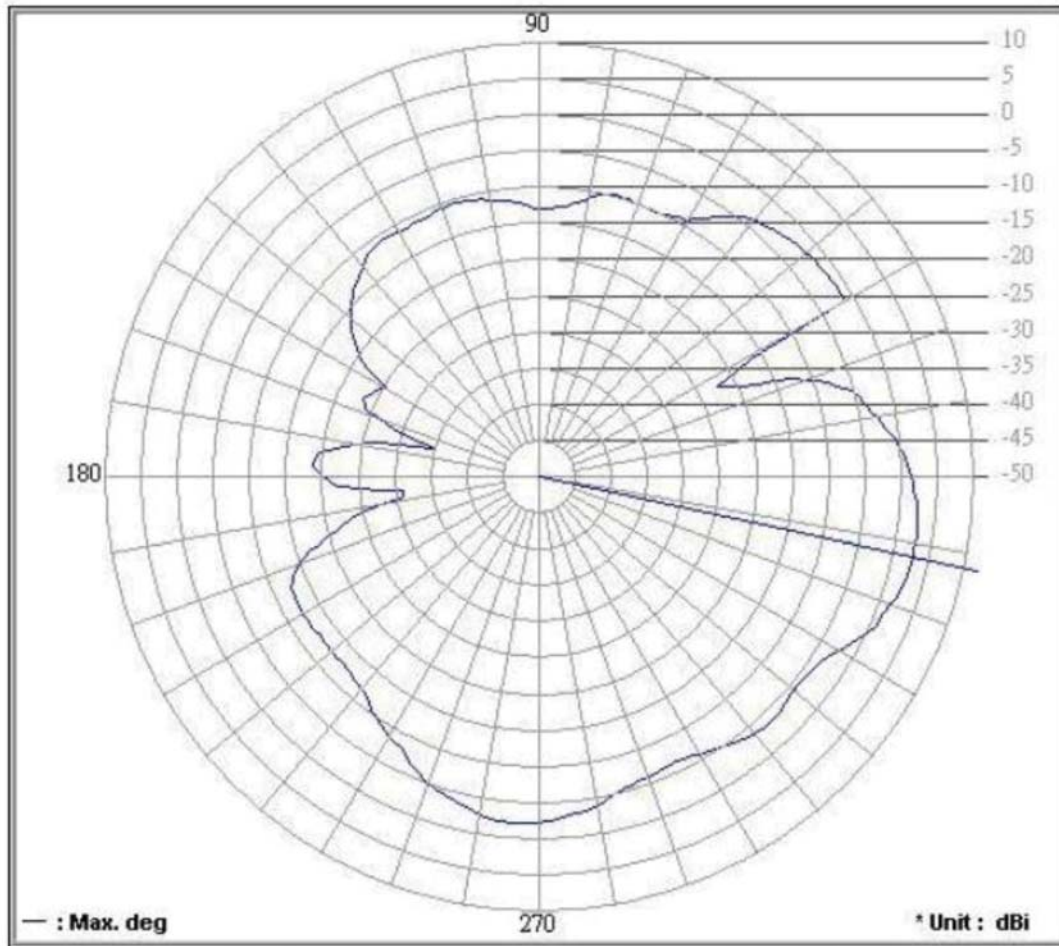
Maximum Gain (dB) : **-2.58**      Maximum Gain (degree) : **3**

Minimum Gain (dB) : **-39.35**      Minimum Gain (degree) : **213**

C:\Antenna Pattern V5.0\Graph\0818\08180023.png

### 3.Main antenna : 2480 MHz

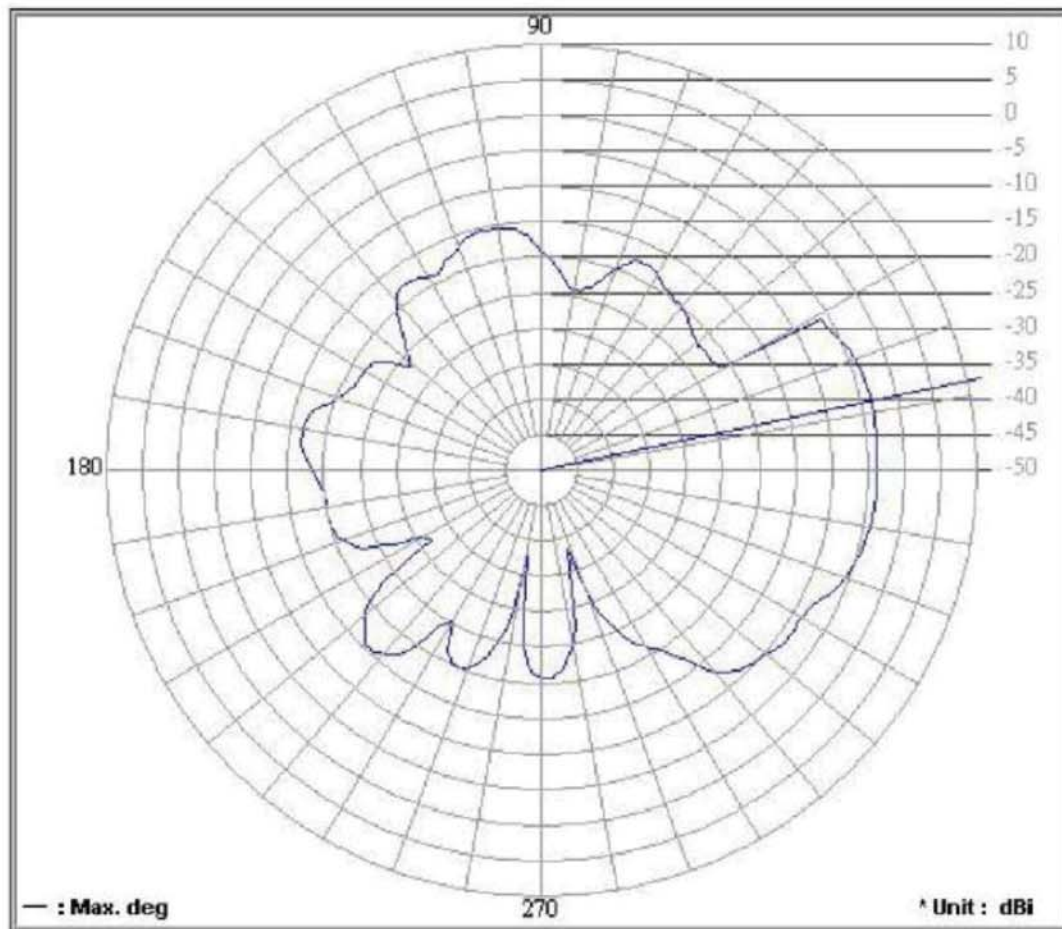
#### 3.1 Horizontal



Frequency (MHz): **2480.00**    Antenna Polarity: **Horizontal**    Average Gain (dB): **-4.84**  
Maximum Gain (dB): **2.80**    Maximum Gain (degree): **348**  
Minimum Gain (dB): **-34.80**    Minimum Gain (degree): **165**

C:\Antenna Pattern V5.0\Graph\0818\08180021.png

### 3.2 Vertical



Frequency (MHz) : **2480.00**      Antenna Polarity : **Vertical**      Average Gain (dB) : **-11.34**

Maximum Gain (dB) : **-3.47**      Maximum Gain (degree) : **12**

Minimum Gain (dB) : **-38.33**      Minimum Gain (degree) : **288**

C:\Antenna Pattern V5.0\Graph\0818\08180022.png

### 4. Result

Center Frequency		Maximum Ant Gain
2402 MHz	H	3.85 dBi
	V	-1.54 dBi
2440 MHz	H	3.18 dBi
	V	-2.58 dBi
2480 MHz	H	2.80 dBi
	V	-3.47 dBi