

# DENSO

## BHT-M80 Series

### Operator's Guide 操作指南

#### Handy Terminal

#### 手持式条码扫描器

- BHT-M80-QW (WLAN model)
- BHT-M80-QWG (WLAN + WWAN model)

Thank you for using the DENSO WAVE Handy Terminal. Please read this manual thoroughly prior to operation to ensure full use of the product's functionality, and store safely in a convenient location for quick reference even after reading. This manual contains only the basic details required for operation. Please refer to the User's Manual for further details on general operation. The User's Manual can be downloaded from the DENSO WAVE Web site. <https://www.denso-wave.com/>

感谢您使用 DENSO WAVE 公司的手持式扫描器。为了充分使用本产品的功能，请在阅读操作前阅读本说明书，并且在阅读后为了能够在必要时随时参考，请妥善保管本说明书。本说明书仅记载了操作过程中所需要的基本内容。关于所有操作的详细内容，请参考用户手册。用户手册可在本公司网站免费下载。 <http://www.denso-wave.com/>



496996-080

1

## Chapter 1 Please read me first

Please contact your nearest distributor, if using in other countries.

The latest precision manufacturing technology yields LCD panels with an effective resolution of 99.99% or higher. The downside, however, is that up to 0.01% of the pixels can remain permanently dark or lit on today's state-of-the-art panels. Furthermore, please be aware that individual differences may occur in the screen color and brightness due to the characteristics of the white LEDs used in the LCD display backlight.

The Customer shall not modify, reverse compile, reverse engineer, reverse assemble, and/or otherwise tamper with our BHT's firmware.

### 1.1 About This Manual

Due to changes and improvements, the content of this manual may be subject to change without prior notice. The reproduction or duplication of the whole or part of this manual is strictly prohibited without prior consent. Please contact DENSO WAVE if this manual is lost. Every attempt has been made to ensure that the content of this manual is thorough and up to date, however, we kindly ask you to report any questionable descriptions, mistakes or omissions, if any, to DENSO WAVE.

### 1.2 Liability Limitations

DENSO WAVE INCORPORATED ("DENSO WAVE") does not assume any product liability (including damages for lost profits, interruption of operations, or the loss of business-related information) arising out of, or in connection with, the use of, or inability to use the BHT system software or related manuals.

DENSO WAVE takes reasonable precautions to ensure its products do not infringe upon any patents or other intellectual property rights of others(s), however, DENSO WAVE cannot be responsible for any patent or other intellectual property right infringement(s) or violation(s) arising from any of the following:

- The use of DENSO WAVE's products in connection or in combination with other components, products, devices, data processing systems or software not supplied by DENSO WAVE.
  - The use of DENSO WAVE's products in a manner for which they were not intended nor designed.
  - The modification of DENSO WAVE's products by parties other than DENSO WAVE.
- If it is judged by DENSO WAVE that malfunction of the product is due to the product having been dropped or subjected to impact, repairs will be made at a reasonable charge even within the warranty period. DENSO WAVE will not bear any responsibility for data which customers have recorded and are received by DENSO WAVE for repair and analysis.

### 1.3 Free/Open source software (FOSS)

This product contains Free / Open Source Software (FOSS). DENSO WAVE is ready to provide compliant source codes. For details, please contact our dealer or contact the site below. <https://www.denso-wave.com/>

2

## 1.4 Product Contents Check

Ensure you have all of the following items prior to use. In the event of missing or damaged item, please contact your dealer.

- Handy terminal x1
- Operator's guide (this manual) x1
- Wrist strap x1

## 1.5 Customer Registration

To allow us to provide our customers with comprehensive service and support, we request that all customers complete a Member Registration Form. Registered members will be offered the following privileges:

- The latest upgrade information
- Free exhibition and event information for new products
- Free web-information service "QDirect."

### QDirect Service Contents

Information searching service (FAQ) Offers detailed information on each product.  
The latest OS systems for the BHT Series, repair software, and sample programs can be downloaded.  
Download service Product related queries can be sent in by e-mail.  
E-mail inquiries Please note that these privileges may be subject to change without prior notice.

### How to Register

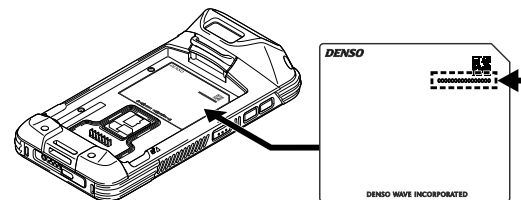
Access the URL below and follow the instruction provided. <https://www.denso-wave.com/>

## 1.6 Secured Three-year Warranty

If you register the serial number of the product within one month after your purchase, the warranty of the registered product will be prolonged to three years from the one-year warranty.

Please access the URL below to register. <https://www.denso-wave.com/>

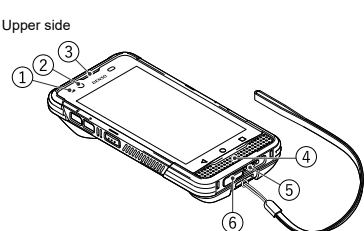
The serial number for registration is found under the QR Code on the name plate.



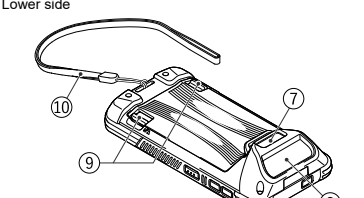
3

## Chapter 2 Components

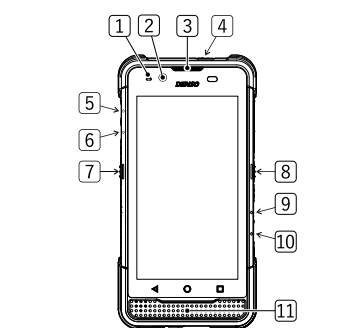
### 2.1 BHT-M80



- Status indicator
- Front camera
- Receiver
- Speaker, microphone
- Interface connector
- USB connector



- Rear camera
- Code reading window
- Battery cover locks
- Wrist strap



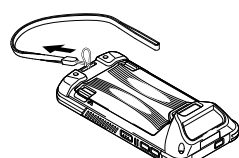
- Status indicator
- Front camera
- Receiver
- Power key
- M1 key
- M2 key
- Left trigger key
- Right trigger key
- M3 key
- M4 key
- Speaker, microphone

5

## Chapter 3 Preparation before use

### 3.1 Fasten the wrist strap.

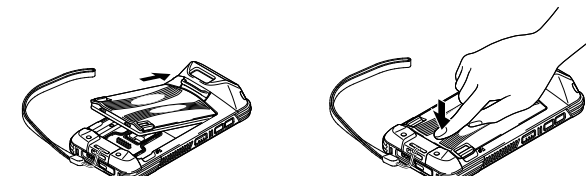
3.1.1 Fasten the wrist strap to the BHT-M80 as shown on the right.



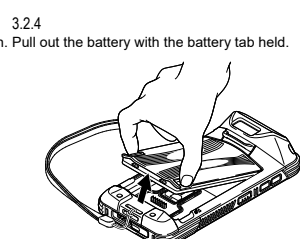
### 3.2 Inserting and removing the main battery

3.2.1 Insert the battery in the arrow direction.

3.2.2 Push the battery in the arrow direction.



3.2.3 Push the battery cover locks in the arrow direction. Pull out the battery with the battery tab held.



6

### 3.3 Charging the BHT

The main battery may not be fully charged for shipment. Please charge the main battery to full before using the handy terminal. You may use the Charging Cradle or USB cable to charge the handy terminal.

#### 3.3.1 Charging Time

##### Main battery

The main battery powers the handy terminal to work. It takes approximately 3 hours to charge an empty main battery to full. The status indicator above the screen will light up in red while charging and will turn green when charging is complete.

##### Sub-battery

The sub-battery is mounted on the main board and used for retaining data when the battery is replaced or when it is removed. When the sub-battery is fully charged, data can be retained for at least five minutes. It may take approximately ten minutes to fully charge an empty sub-battery after installing the main one. Do not remove the battery so as to retain data properly.

#### 3.3.2 Charging Temperature

Charging the battery at room temperature (18 °C to 25 °C) is recommended in order to deliver optimal performance. Please note that battery charging stops when ambient temperature drops below 0°C or exceeds 40°C. The temperature to stop charging may vary according to the practical operating environment.

#### 3.3.3 Operation on Battery Power

When 802.11a/b/g/n/ac, GSM/GPRS/EDGE/WCDMA/UMTS/HSDPA/HSUPA/HSPA+LTE, Bluetooth v5.1&v2.1+EDR and GPS are all enabled on battery power, the main battery level will drop down substantially. Prolonged use of the display and continued scanning of barcodes will also affect battery level.

In order to avoid the unexpected system shutting down when the battery level is low, we suggest that you keep a fresh battery for replacement at all times, or connect the BHT to an external power.

Remove the battery from the BHT or the Cradle then store in a cool and dry place if not using the BHT for an extended period of time.

Storing a fully charged or depleted (unable to turn on the BHT) battery for long periods time may deteriorate the performance and life of the battery.

For long-term storage, storing the battery at the 50% of the power level is recommended. During long-term storage, charge the battery cartridge fully once a year in order to maintain the battery performance. When fully charged, allow the battery to discharge down to the recommended level before recharging.

The battery may swell over the years depending on usage environment. This is a characteristic of a lithium-ion battery and is not safety hazard.

#### 3.3.4 Charging Status of the BHT

The Charge status of the BHT is shown on the status indicator above the display screen.

Status indicator	Description
Red, solid	Charging the BHT
Red, blink	Charging error
Green, solid	Charging complete
Not light	Charging error (Charging stops.)

7

## 1.7 Usage Precautions

### 1.7.1 Usage environment restrictions

Do not use the BHT where it may be exposed to fire, high temperatures, or direct sunlight. (Failure to observe this may result in damage, overheating, explosion, or fire.)  
When the BHT is stored in a high-temperature, high-humidity environment of 50° to 60°C, leave to sit in a location at room temperature and normal humidity for at least 1 day prior to use.  
Failure to observe this may cause a reading failure or damage the BHT.  
Do not use the BHT in places with extreme temperature variations.  
(Failure to observe this may lead to BHT malfunction due to condensation.)  
Leave the BHT for a short while prior to use when moved from a cold to a warm environment.  
Do not use the BHT in places where it may be exposed to strong impact or significant static electricity.

### 1.7.2 Keep the BHT away from electromagnetic waves and metallic objects.

Wireless communication may not be possible in the following locations and using:  
In the vicinity of the following devices operating on a 2.4 GHz waveband (Communication may not be possible due to electromagnetic interference.)  
- Industrial, scientific, or medical equipment such as microwave ovens  
- Wireless LAN devices  
- Logistics systems in places such as plants or warehouses  
- Wireless devices such as amateur radio stations  
In the vicinity of household appliances emitting electromagnetic waves such as computers or televisions (Communication may not be possible due to electromagnetic noise.)  
In the vicinity of metallic objects, in places with high levels of metallic dust, or in places surrounded by metal walls (Communication may not be possible due to the presence of metallic objects.)  
Putting on any metallic objects around the antenna. Placing your hand over the antenna

## 1.8 Proper Care of the BHT

Make sure to turn OFF the BHT before cleaning.

Terminal dirt on the BHT and battery  
Periodically wipe any dirt from the terminals of the BHT and battery with a cotton swab or similar soft object. Be sure not to scratch or deform the terminals while cleaning.  
Never use organic solvents such as thinner or alcohol, as this may cause terminal plating to be peeled off.

#### Housing dirt

Wipe any dirt from the housing with a dry, soft cloth.  
If excessively dirty, wipe with a soft cloth that has been soaked in soapy water (always use a neutral detergent) and wrung out thoroughly.  
Never use organic solvents such as thinner or alcohol, as this may cause the housing to be marred or paint to be peeled off.

#### LCD screen dirt

Never rub or strike the LCD screen with anything hard, as this may result in scratches on the screen or breakage.

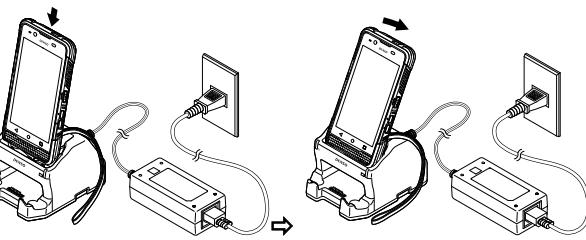
#### Code reading window dirt

Any dirt or dust adhering to the clear plate of the code reading window will adversely affect reading performance.  
When using in dusty areas, check regularly whether any dust has accumulated on the clear plate of the code reading window, and if so, first blow the dust away with an airbrush, and then gently wipe the plate with a cotton swab or similar soft object.  
If sand or hard particles have accumulated, rubbing the plate will result in scratches. Blow the particles away with an airbrush or wipe with a soft brush.

4

## Charging to the BHT

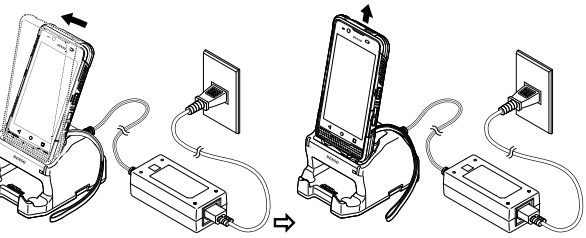
Place the BHT upright and gradually incline it backward.



Note: When placing the BHT on the cradle, be careful not to get the strap entangled between the BHT and the cradle. A specific part of BHT may get warm while charging depending on the operating environment and condition. This is not a malfunction.

### Removing the BHT from the Cradle

Incline the BHT forward and pull it out.



### Notice on the power connection of the charging cradle

As for CU-M80U with the USB interface, both the power adapter and the USB cable can be used. To charge both BHT and the spare battery, use the power adapter.  
When charging with the USB cable, only BHT can be charged. Under the conditions, such as when the large capacity battery is installed in the BHT or when the BHT is under operation while charging, the use of the power adapter is recommended because these conditions may result in long-time charging or a charging error. Using a deteriorated battery may cause a charging error. In this case, replace the battery with the new one.

9

## Chapter 4 How to Use

### 4.1 Turn OFF the Power

#### Power ON

To power on the BHT, press and hold the power button (P) located on the upper side of the device. The OS starts up and the lock screen is displayed. Swipe the lock screen from bottom to top to display the home screen.

Note: In order to power on the handy terminal, the battery must be secured in place. When using the BHT under the low temperature environment such as inside the refrigerated room, power on the BHT at the ambient temperature and then take it to the low temperature environment. Powering on the BHT at the low temperature may not start up the BHT successfully. Operating the BHT under the low temperature environment may result in delayed BHT operation or extremely reduced operating time due to the battery characteristics. Please verify the operating conditions prior to use.

### 4.2 Scan Codes

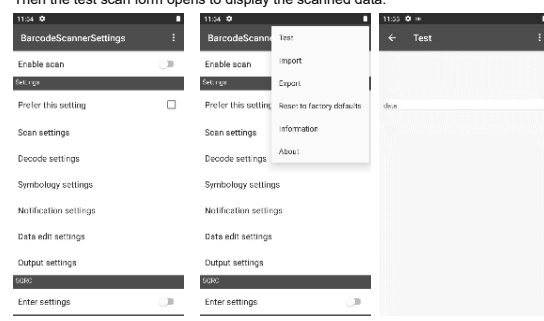
Follow the procedure below to read codes.

#### 4.2.1

Press the power key to start up the BHT from the sleep status.

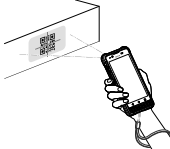
#### 4.2.2

Tap the Scan Settings. Turn on the Reading Enable, and tap the TEST on the menu bar. Then the test scan form opens to display the scanned data.



#### 4.2.3

Point the code reading window towards the barcode to scan and press a trigger key on the side of the scanner. Light for scanning is irradiated and the printed barcode is scanned.  
When the data is successfully scanned and displayed, or the time has elapsed, the light for scanning disappears.



10

### 4.3 Turn OFF the Power

#### Power OFF

To power off the BHT, press and hold the power button (P), and tap the pop up ★Power off★ menu. Make sure that all user data and tasks are saved before tapping the ★Power off★ menu.

### 4.4 Battery Power Level Indicator

The main-battery power level can be confirmed at the battery icon displayed in the top right of the LCD screen. Since the indicator shows only a rough estimate of main-battery power not an accurate remaining power level, please be charged early.

The main-battery power level indicator shows only a rough estimate of battery power not an accurate remaining power level. Please read Safety Precautions to ensure the proper use of the battery.

Battery icon	Status
	100%
	75%
	15%
	Charging

### 4.5 Using the BHT after Long Non-Use

Data stored in the BHT may be lost or damaged and the calendar clock may stop if the BHT is left unused for a long period.

- Keep a backup copy of important or critical information beforehand.
- Reset the calendar clock if it is stopped.
- The battery is also used as a backup power source. You should not remove the battery from the BHT for at least 10 minutes until the sub-battery is fully charged.

Please refer to the User's Manual for more information on trouble shooting.

11

## Chapter 5 When Unable to Successfully Read Codes

Case	Countermeasure
Specular reflection When the light is focused on the printed surface of the code from directly above, the BHT may not read the code due to specular reflection.	Change the BHT reading angle and try again. 
Distance from code The code may not be read if it is too close to or too far from the BHT reading window, even when the code is within the read area.	Move the BHT slowly toward or away from the code and try again.
Code surface curvature The code may not be read if its surface is extremely curved.	Read the code at the center of the code reading window.
Code surface dirt The code may not be read if its surface is dirty.	Wipe the dirt from the code and try again.
Code reading window dirt The code may not be read if the code reading window is dirty.	Blow any dust away with an airbrush, and then gently wipe the reading window with a cotton swab or similar soft object.
Direct sunlight, ambient light Code reading may be adversely affected by direct sunlight or the brightness of the surrounding light.	Read the code away from direct sunlight. Adjust the brightness of the surrounding light when reading indoors.

12

## Chapter 6 Troubleshooting Guide

### 6.1 The BHT power does not turn ON

- Make sure that the main-battery is properly inserted into the BHT.
- Check the battery power level and charge the battery if necessary.
- Wipe any dirt from the main-battery and the BHT terminals.

### 6.2 The BHT cannot be charged.

- Make sure that the dedicated charger is used.
- Make sure that the main-battery is properly inserted into the BHT.
- Make sure that the BHT has been properly placed in the Cradle. The BHT status indicator will turn red when properly placed in the Cradle.
- Wipe any dirt from the main-battery and BHT terminals.
- Replace the main-battery with a new one if it has been charged more than 300 times, or if more than one year has elapsed in order to avoid any trouble caused by the battery deterioration.

### 6.3 The BHT unexpectedly turns OFF.

- Make sure that the battery has been fully charged. If not, charge the battery.
- Check whether auto power off is set. If auto power off is set, the power will be turned off automatically when the BHT is not used for the set time. Auto power off setting can be changed only in the user program.
- The BHT may be broken if the above measures are not adequate. Notify the system administrator.
- Refer to the User's Manual for appropriate measures if an error message is displayed on the BHT during the operation.

## Chapter 7 Memory Contents after power off

Data location	Data retention
Internal storage flash memory	Data retained
microSD card	Data retained
Data being edited	Data erased

13

All rights reserved. No part of this publication may be reproduced in any form or by any means without permission in writing from the publisher. All products and company names mentioned are trademarks or registered trademarks of their respective holders.  
DENSO WAVE INCORPORATED does not assume any product liability arising out of, or in connection with, the application or use of any product, circuit, or application described herein.  
If it is judged by DENSO WAVE INCORPORATED that malfunction of the product is due to the product having been dropped or subjected to impact, repairs will be made at a reasonable charge even within the warranty period.  
Intellectual Property Precaution  
DENSO WAVE INCORPORATED ("DENSO WAVE") takes reasonable precautions to ensure its products do not infringe upon any patent or other intellectual property rights of others(s), but DENSO WAVE cannot be responsible for any patent or other intellectual property right infringement(s) or violation(s) which arise from (i) the use of DENSO WAVE's product(s) in connection or in combination with other component(s), product(s), data processing system(s) or equipment or software not supplied from DENSO WAVE, (ii) the use of DENSO WAVE's products in a manner for which the same were not intended nor designed, or (iii) any modification of DENSO WAVE's products by other(s) than DENSO WAVE.

Copyright © DENSO WAVE INCORPORATED, 2018  
All rights reserved. No part of this publication may be reproduced in any form or by any means without permission in writing from the publisher.  
All products and company names mentioned in this document are trademarks or registered trademarks of their respective holders.  
QDirect is a trademark of DENSO WAVE INCORPORATED. Android™ is a trademark of Google LLC. Other products and company names mentioned in this document are trademarks or registered trademarks of their respective holders.  
Specifications are subject to change without prior notice.

DENSO WAVE INCORPORATED

1 Yoshitake Kusagi Agui-cho, Chita-gun, Aichi 470-2297, Japan  
<https://www.denso-wave.com/>

This manual uses recycled paper.

14

15

16

## 第1章 使用須知

如需將本產品出口到國外，請事先向我公司營業點查詢。  
液晶採用高精度技術生產，屏幕上有可能存在微細顆粒或死點，但這不屬於故障。  
此外，由於液晶屏背光源使用的白色LED的特性，每台產品的屏幕色彩或亮度存在差異，敬請諒解。  
對本產品的固件不能進行逆向工程、反編譯、反彙編、合併、更改或更換。

### 1.1 關於本手冊

- 因規格改良等原因，本手冊的內容可能會有不經事先通知而發生變更的情況。
- 未經許可，禁止轉載、複製本手冊的全部或部分內容。
- 如不慎丟失本手冊，請向我公司諮詢。
- 對於本手冊的內容，雖然我們盡力追求完美，但萬一發現有可疑之處、錯誤或遺漏，煩請與我公司聯繫。

### 1.2 責任範圍

- 對於因使用或無法使用BHT系統軟件、相關資料而造成的附帶或間接損害（包含因營業利潤損失、業務中斷、營業信息喪失等造成的損害），本公司不承擔任何責任。
- 為了防止產品侵害他人權利，本公司採取了適當的措施，但對於因以下(1)~(3)項中任何一種原因引起的專利權侵害等事件，本公司將無法承擔責任，敬請諒解。
  - 與非本公司提供的零件、產品、裝置、數據處理系統或軟件配合使用時
  - 本公司產品被以預想不到的方法使用時
  - 本公司產品本公司以外的第三方改造時
- 如果本公司判斷是因損壞、衝擊造成的故障，即使在保質期內，也將是有償維修。
- 預存用戶的產品進行修理、解析等時，對於用戶保存在產品內部的數據，本公司將無法承擔責任。

### 1.3 Free/Open source software (FOSS)

- 本產品中包含Free/Open Source Software (FOSS)。Denso Wave有提供對應源代碼的準備。詳細情況請諮詢本公司的銷售門店或查看以下網站。  
<https://www.denso-wave.com/>

### 1.4 附屬品的確認

使用前，請確認以下附屬品是否齊全。  
如果發現有不齊或損壞等情況，請與銷售門店聯繫。

- BHT本體 (1台)
- 操作指南 (本手冊)
- 手繩 (1根)

## 1.5 用戶註冊

為了向選購本公司產品的用戶提供更充實的服務和幫助，本公司希望用戶配合進行“用戶註冊”，進行用戶註冊後可以享受以下特別服務。

- 發布新升級通知
- 發布有關新產品、展覽會以及各種活動等的信息
- 免費使用網絡信息服務“Qbirect™”

### Qbirect的服務內容

信息搜索服務 (FAQ) 可以獲取各種產品的詳細信息。  
下載服務 可以下載BHT系列的最新系統、軟件的修改模塊以及產品程序。  
產品諮詢 可以通過電子郵件對產品進行諮詢。

特別服務的內容會發生變化，敬請諒解。

註冊方法

- 請訪問以下網頁並按照圖解進行註冊。  
<https://www.denso-wave.com/>

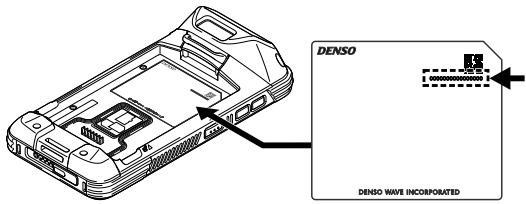
### 1.6 有保證的三年保固

如果您在購買產品後一個月內註冊產品序號，註冊後的產品保固期將從一年延長至三年。

請至以下網址註冊。

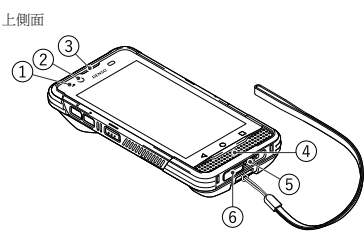
<https://www.denso-wave.com/>

在銘板上的QR碼中可以找到註冊的序號。

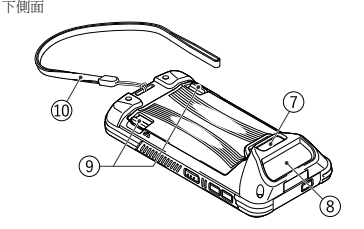


## 第2章 元件

### 2.1 BHT-M80



- 狀態指示燈
- 前相機
- 接收器
- 揚聲器、麥克風
- 介面連接器
- USB連接器
- 後相機
- 條碼讀取窗口
- 電池蓋鎖
- 手繩

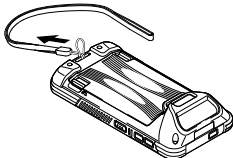


- 狀態指示燈
- 前相機
- 接收器
- 電源鍵
- M1鍵
- M2鍵
- 左觸摸鍵
- 右觸摸鍵
- M3鍵
- M4鍵
- 揚聲器、麥克風

## 第3章 使用前的準備工作

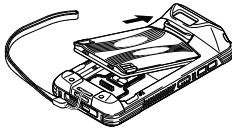
### 3.1 繫好手繩。

將手繩繫在BHT-M80上，如右圖所示。

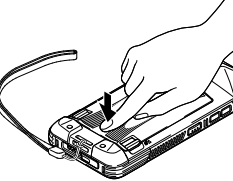


### 3.2 插入和取出主電池

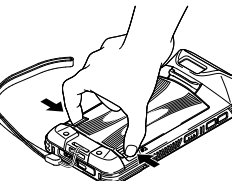
3.2.1 按箭頭方向插入電池。



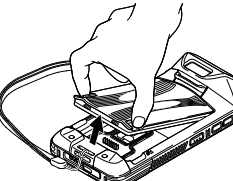
3.2.2 按箭頭方向壓下電池。



3.2.3 沿箭頭方向壓下電池蓋鎖。



3.2.4 握住電池鎖片，拉出電池。



## 1.7 使用上的注意事項

### 1.7.1 不能使用的場所

- 火爐等高溫場所、受陽光直射的場所（有可能造成故障、發熱、破裂、著火）。  
存放在溫度30℃~60℃的高溫高濕場所時，請在常溫常濕場所放置1天以上後再使用。如果在內部積存高溫的狀態下使用，有可能會造成無法讀取或設備故障。
- 溫度變化急劇的場所（結露會引起運行錯誤）。
- 從寒冷地方移動到溫暖的地方時，請放置一段時間後再使用。
- 會受到強烈衝擊或有大量靜電產生的場所

### 1.7.2 遠離電波、電磁波、金屬

在以下場所或使用方法下，可能會出現無法進行無線通信的情況。

- 以下使用2.4 GHz頻段的電波的設備的附近（因受電波干擾，會出現無法通信的情況。）
  - 微波爐等工業、科學、醫療用設備
  - 無線LAN設備
  - 工廠設備等的物理管理系統
  - 無線電站等的無線發射器
- 電腦等產生電磁波的家電產品的附近（電磁感應會導致無法通信。）
- 金屬物附近。金屬粉多的地方，使金屬顆粒包圍的房間（因金屬的影響，會出現無法通信的情況。）
- 通信天線的周圍有金屬物或被手遮擋。

### 1.7.3 電池的更換時期

當電池經過反復充放電後接近使用壽命時，因容量下降，會導致BHT的運行時間變短。如果出現這種情況，請停止使用已接近使用壽命的電池，並更換新電池。  
另外，因電池到達使用壽命後會發生膨脹，所以會出現難以插入BHT的情況。如果出現這種情況，說明電池壽命已到，請立即更換新電池。

### 3.3 為BHT充電

主電池可能沒有完全取出或取出。請將主電池充飽電後再使用手持式掃描器。您也可以使用充電座或USB線為手持式掃描器充電。

#### 3.3.1 充電時間

主電池  
手持式掃描器是由主電池供電以維持其運轉。將空的主電池充飽電大約需要3個小時。充電時螢幕上方的狀態指示燈會亮起紅色。充電完成後會變成綠色。

#### 副電池

副電池安裝在主機板上，用途為在更換電池或取出電池時保留資料。  
當副電池充飽電後，資料至少可保留5分鐘。  
安裝完主電池後，可能需要大約十分鐘才能將空的副電池充飽電。請勿取出電池，以便妥善保留資料。

#### 3.3.2 充電溫度

建議在室溫下（18℃至25℃）為電池充電，以達到最佳性能。請注意，當環境溫度降至0℃以下或超過40℃時，電池將停止充電。停止充電的溫度可能會因實際操作環境而有所不同。

#### 3.3.3 電池供電的操作

當802.11a/b/g/n/ac、GSM/GPRS/EDGE/WCDMA/UMTS/HSDPA/HSUPA/HSPA+LTE、v5.1及v2.1+EDGE藍牙和GPS都啟用電池供電時，主電池電量將大幅下降。長時間使用螢幕和連續掃描條碼也會影響電池電量。為了避免電池電量過低時系統意外關機，建議您隨時準備好新的電池進行更換，或是將BHT連接至外部電源。

如果長時間不使用BHT，請將電池從BHT或充電座中取出，再存放在陰涼乾燥的地方。長時間存放充飽電或電力耗盡（無法開啟BHT）的電池，可能會耗損電池的性能和壽命。  
如需長期存放，建議將電池電力保留在50%的電量。  
在長期存放過程中，為了保持電池性能，每年應充飽一次電池。電池充飽後，先將電池放回充電座後再存放。  
根據使用環境的不同，電池可能在幾年後膨脹。這是與電池的特性，不存在安全隱患。

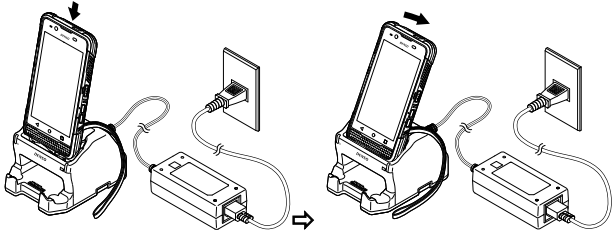
#### 3.3.4 BHT的充電狀態

BHT的充電狀態顯示在螢幕上方的狀態指示燈上。

狀態指示燈	指示	說明
充電	紅色，恆亮	為BHT充電
	紅色，閃爍	充電錯誤
	綠色，恆亮	充電完成
沒有亮燈	充電錯誤（充電停止。）	

### 給BHT充電

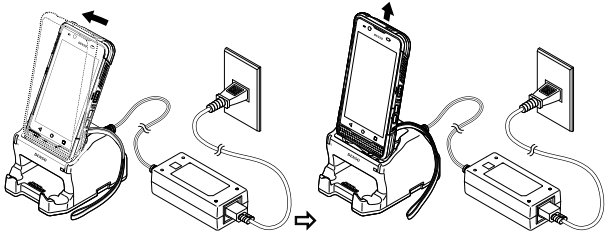
將BHT直立，逐漸向後傾斜。



注意：將BHT放置在充電座上時，請注意不要讓掃描儀在BHT和充電座之間。充電時，BHT的某個特定部位可能會因工作環境和條件的不同而發熱。這並非故障。

#### 從充電座取下BHT

向前傾斜BHT，並將其拉出。



#### 關於充電由電源連接的注意事項

對於帶有USB前面孔CU-M80U，電源供應器和USB線皆可使用。  
要為BHT和備用電池充電，可使用電源供應器。  
使用USB線充電時，只能為BHT充電。在BHT中安裝大容量電池或在BHT處於工作狀態時充電等情況下，建議使用電源供應器，因為這些情況可能會導致長時間充電或充電錯誤。使用耗能的電池可能會導致充電錯誤。在這種情況下，要更換新的電池。

## 第6章 故障排除指南

### 6.1 BHT電源沒有開啟

- 確認主電池已正確插入BHT中。
- 檢查電池電量，必要時為電池充電。
- 抹除主電池和BHT掃描器上的灰塵。

### 6.2 BHT無法充電。

- 確認已使用專用電源供應器。
- 確認主電池已正確插入BHT中。
- 確認BHT已正確放置在充電座中。
  - 當正確放入充電座時，BHT狀態指示燈將變成紅色。
- 抹除主電池和BHT掃描器上的灰塵。
- 如果主電池充電次數超過300次，或使用時間超過一年，請更換新的電池，以避免電池劣化而造成的任何問題。

### 6.3 BHT意外關閉。

- 確認電池已充電。如果沒有充電，請為電池充電。
- 檢查是否設定了自動關閉電源。如果設定了自動關閉電源，則在設定的時間內未使用BHT，電源將自動關閉。
  - 自動關閉電源設定只能透過用戶程式變更。
- 如果採取上述措施仍未解決，BHT可能已損壞。通知系統管理員。
- 如果在操作過程中BHT顯示錯誤訊息，請參考使用手冊以採取適當的措置。

## 第7章 關閉電源後的記憶體內容

資料位置	資料保留
內部儲存快閃記憶體	保留的資料
microSD卡	保留的資料
編輯中的資料	刪除的資料

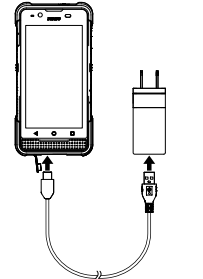
## 1.8 日常保養

進行日常保養，請務必關閉電源。

- BHT本體以及充電座上的污垢。
  - 請定期用棉花棒等除去BHT本體或充電座上的污垢。
  - 但在擦拭時，請注意避免使電子變形。
  - 進行清潔時，請勿使用香皂水、酒精等溶劑。
  - 否則有可能造成充電電極的鍍層剝落。
- 外觀的污垢。
  - 請用柔軟的干布擦除。
  - 污痕嚴重時，請將布浸入用水稀釋的中性清潔劑中，擦乾後擦拭。最後用乾布擦淨水分。
  - 請勿使用香皂水、酒精等溶劑。否則有可能造成外觀受損或塗料剝落。
- 液晶顯示屏的污垢。
  - 液晶顯示屏容易受傷，請勿用硬物刮傷或敲打。
  - 如有刮傷，請勿使用指甲、鋼絲棉等。
- 按鍵的污垢。
  - 擦拭按鍵表面的污垢時，請勿強力搓揉或拉拽按鍵。否則可能會造成按鍵損壞。
- 條碼讀取窗口的污垢。
  - 如果條碼讀取窗口的玻璃板上粘有灰塵或垃圾，會影響條碼的讀取。
  - 在灰塵多的地方使用時，請定期檢查讀取窗口的玻璃板上是否粘有灰塵，如果有灰塵，請用空氣刷將灰塵吹走後，用柔軟的棉花棒等輕輕擦拭乾淨。
  - 有較多灰塵時，請定期檢查讀取窗口的玻璃板受損，所以請用空氣刷將灰塵吹走，或用毛氈柔軟的刷子將灰塵刷掉。

### 3.3.5 使用USB線

- 將USB Type-C連接器插入手持式掃描器底部的連接器。
- 將USB Type-A連接器插入USB電源供應器。

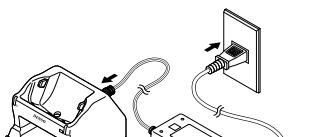


### 3.3.6 使用充電座

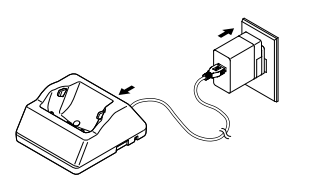
#### 將充電座接上電源

使用專用電源供應器或USB線和USB電源供應器，將充電座接上電源。  
將交流電源插頭或交流電源供應器插入電源插座。

使用電源供應器將CU-M80U接上電源



使用USB電源供應器將CU-M80U接上電源



## 第5章 當無法成功讀取條碼時

原因	對策
鏡面反射 與條碼之距離 條碼表面曲率 條碼表面的污垢 條碼讀取窗口的污垢 陽光直射或周圍光線的亮度可能會對條碼讀取產生不利影響。	改變BHT讀取角度，再試一次。 BHT可能會因鏡面反射而無法讀取條碼。 緩慢地將BHT移向或遠離條碼，然後再試一次。 讀取位於條碼讀取窗口中心位置的條碼。 抹除條碼上的污垢，再試一次。 讀取位於條碼讀取窗口中心位置的條碼。 用氣刷吹走所有灰塵，然後用棉籤或類似的軟物輕輕擦除讀取窗口。 讀取條碼時要避開陽光直射。在室內讀取時，調整周圍光線的亮度。

### 4.5 長時間不使用BHT後再度使用

如果長時間不使用BHT，BHT中儲存的資料可能會消失或損壞，並且日曆時間可能會停止。  
重要的此類儲存的資訊應事先做好備份。  
如果日曆時間已停止，即重新設定之。  
電池也作為備份電源使用。至少在副電池充飽電的10分鐘內，勿從BHT上取下電池，以瞭解更多的故障排除資訊，請參考使用手冊。

- 保留所有權利。未經出版商書面許可，不得以任何形式或手段複製本出版物的任何部分。所有提及的產品和公司名稱均為其各自持有者所擁有的商標或註冊商標。
- DENSO WAVE INCORPORATED不承擔因使用或本文所述的任何產品、電路或應用程序而產生的或與之相關的任何產品責任。
- 如果DENSO WAVE INCORPORATED判斷是由於產品掉落或受到衝擊而導致的故障，即使在保固期內，也會收取合理的維修費用。
- 智慧財產權注意事項  
DENSO WAVE INCORPORATED（以下簡稱「DENSO WAVE」）採取合理的預防措施，確保其產品不侵犯他人的任何專利或其他任何智慧財產權。但DENSO WAVE對以下所述的任何專利或其他智慧財產權之侵權或違法行為概不負責：(1) 對DENSO WAVE的產品或程序DENSO WAVE提供任何其他產品、產品、資料或服務或與該產品或程序結合使用；(2) 使用DENSO WAVE產品的方式不符合該產品的用途或設計；或是(3) 由DENSO WAVE以外的他人對DENSO WAVE產品所進行的任何修改。

版權所有 © DENSO WAVE INCORPORATED, 2018  
保留所有權利。未經出版商書面許可，不得以任何形式或手段複製本出版物的任何部分。  
本文件中所提及的產品和公司名稱均為其各自持有者所擁有的商標或註冊商標。  
Qbirect是DENSO WAVE INCORPORATED的商標。Android™是Google LLC的商標。本文件中提及的其他產品和公司名稱均為其各自持有者所擁有的商標或註冊商標。  
規格如有變更，恕不另行通知。