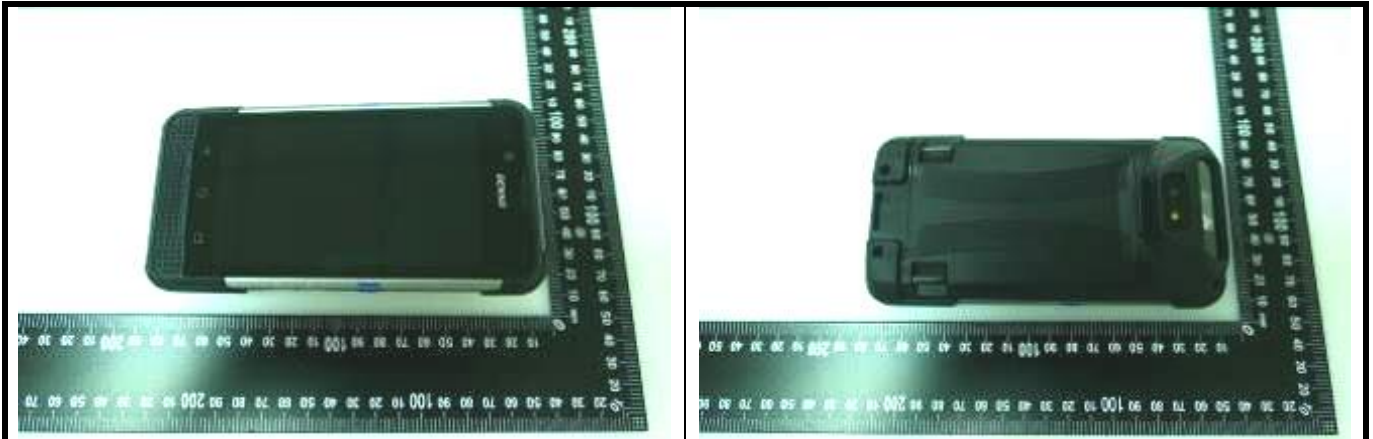
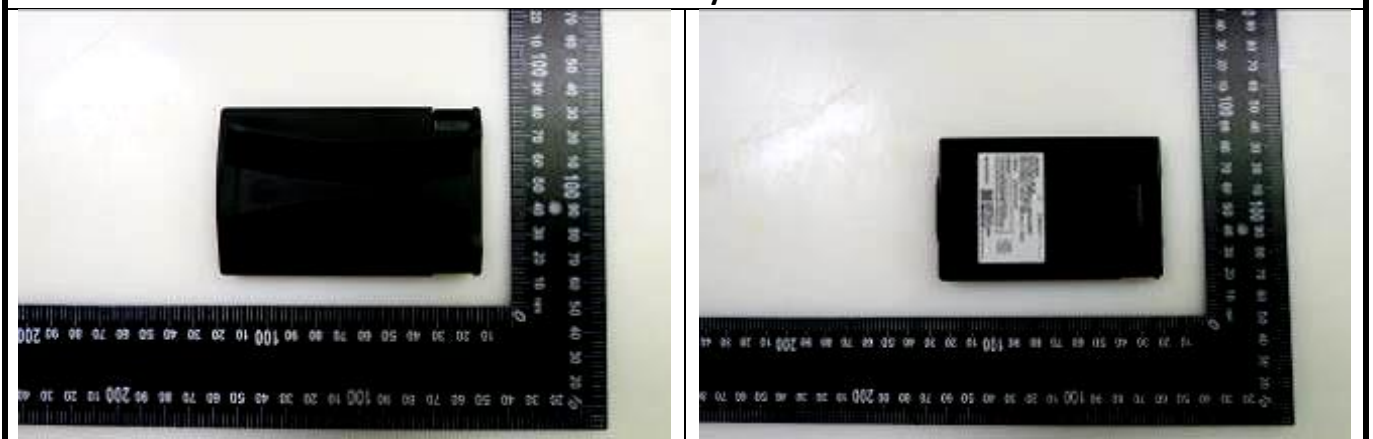


SAR Test Report

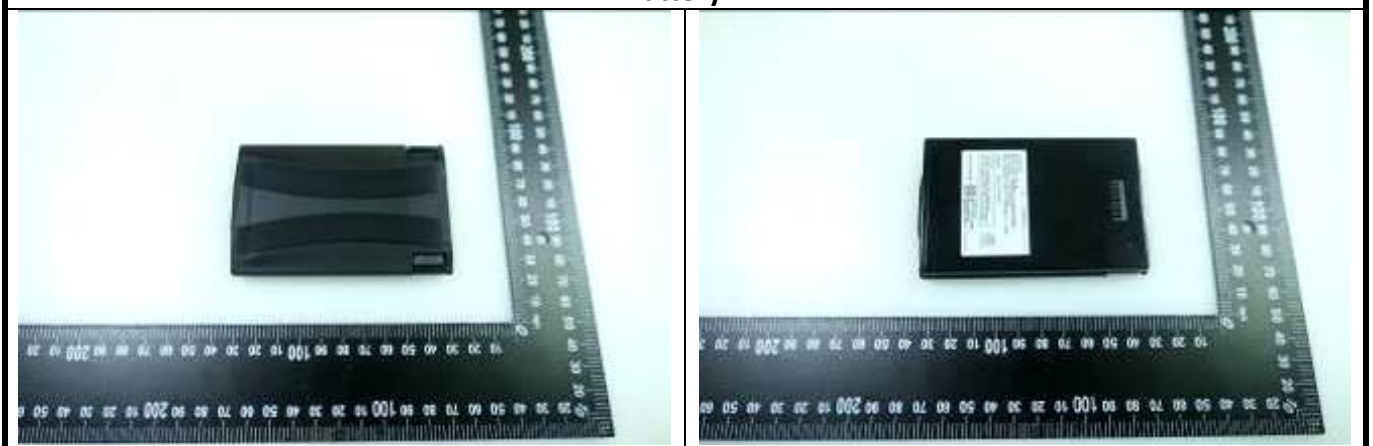
<Photographs of EUT>



Battery 1



Battery 2



SAR Test Report

Battery 3

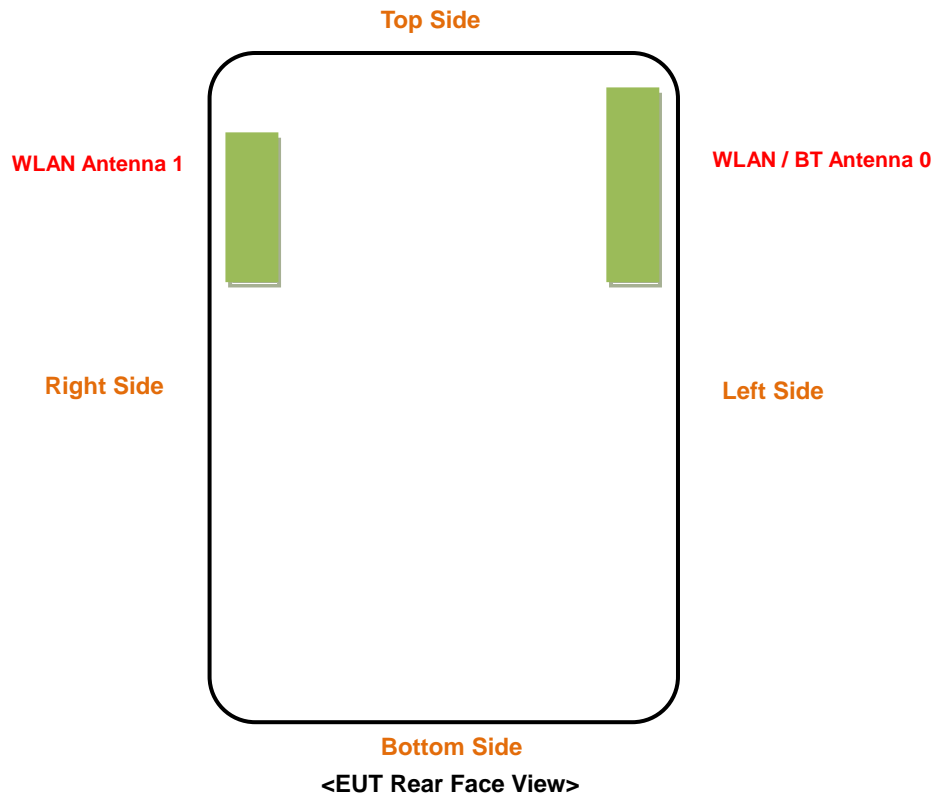


Battery 4



SAR Test Report

<Antenna Location>



The separation distance for antenna to edge:

Antenna	To Top Side (mm)	To Bottom Side (mm)	To Left Side (mm)	To Right Side (mm)
WLAN/BT Ant 0	12.65	129.5	7.11	65.5
WLAN Ant 1	26.13	129.5	66.5	7.11

SAR Test Report

<Photographs of SAR Setup>



Head - Right Cheek



Head - Right Tilted



Head - Left Cheek






Head - Left Tilted



Body worn - Front Face of EUT at 15 mm



Body worn - Rear Face of EUT at 15 mm

	
<p>Product Specific -Left Side of EUT at 0 mm</p>	<p>Product Specific - Right Side of EUT at 0 mm</p>
	
<p>Product Specific -Top Side of EUT at 0 mm</p>	