

APPENDIX 2: SAR Measurement data

1. Evaluation procedure

The evaluation was performed with the following procedure:

Step 1: Measurement of the E-field at a fixed location above the ear point or central position of flat phantom was used as a reference value for assessing the power drop.

Step 2: The SAR distribution at the exposed side of head or body position was measured at a distance of each device from the inner surface of the shell. The area covered the entire dimension of the antenna of EUT and the horizontal grid spacing was [15mm x 15mm]. Based on these data, the area of the maximum absorption was determined by spline interpolation.

Step 3: Around this point found in the Step 2 (area scan), a volume of 30mm x 30mm x 30mm was assessed by measuring 7 x 7 x 7 points. And for any secondary peaks found in the Step2 which are within 2dB of maximum peak (Level morethan ambient noise($\geq 0.012\text{W/kg}$)) and not with this Step3 (Zoom scan) is repeated. On the basis of this data set, the spatial peak SAR value was evaluated under the following procedure:

- (1). The data at the surface were extrapolated, since the center of the dipoles is 1 mm away from the tip of the probe and the distance between the surface and the lowest measuring point is 1.3 mm. The extrapolation was based on a least square algorithm [4]. A polynomial of the fourth order was calculated through the points in z-axes. This polynomial was then used to evaluate the points between the surface and the probe tip.
- (2). The maximum interpolated value was searched with a straightforward algorithm. Around this maximum the SAR values averaged over the spatial volumes (1 g or 10 g) were computed by the 3D-Spline interpolation algorithm. The 3D-Spline is composed of three one-dimensional splines with the "Not a knot"-condition (in x, y and z-directions) [4], [5]. The volume was integrated with the trapezoidal-algorithm. One thousand points (10 x 10 x 10) were interpolated to calculate the average.
- (3). All neighboring volumes were evaluated until no neighboring volume with a higher average value was found.

Step 4: Re-measurement of the E-field at the same location as in Step 1.

2. Measurement data / WLAN 11b/g

BHT-470BWB-CE / Body / Right side / 2437MHz /11b DBPSK (1Mbps)

Crest factor:1

Medium parameters used: $f = 2450$ MHz; $\sigma = 1.98$ mho/m; $\epsilon_r = 50.1$; $\rho = 1000$ kg/m³

Phantom section: Flat Section

Measurement Standard: DASY4 (High Precision Assessment)

DASY4 Configuration:

Probe: EX3DV3 - SN3507; ConvF(8.24, 8.24, 8.24); Calibrated: 2006/05/26

Sensor-Surface: 2mm (Mechanical Surface Detection)

Electronics: DAE3 Sn509; Calibrated: 2006/06/15

Phantom: SAM 1196

Measurement SW: DASY4, V4.6 Build 23; Postprocessing SW: SEMCAD, V1.8 Build 160

Area Scan (81x81x1): Measurement grid: dx=15mm, dy=15mm

Maximum value of SAR (interpolated) = 0.036 mW/g

Zoom Scan (7x7x7)/Cube 0: Measurement grid: dx=5mm, dy=5mm, dz=5mm

Reference Value = 3.91 V/m; Power Drift = -0.282 dB

Peak SAR (extrapolated) = 0.076 W/kg

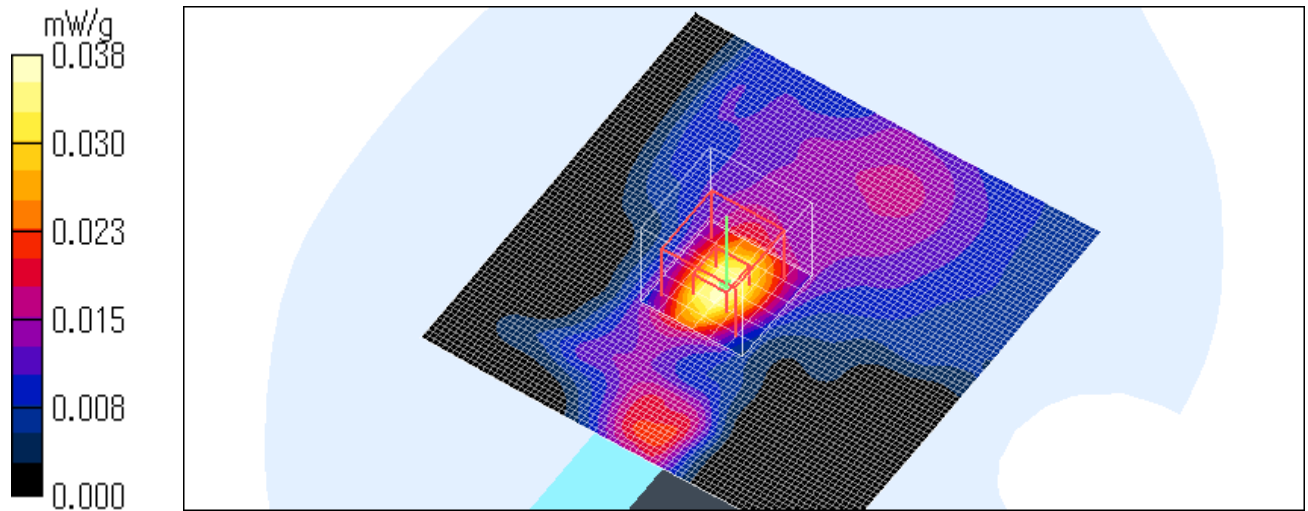
SAR(1 g) = 0.026 mW/g; SAR(10 g) = 0.013 mW/g

Maximum value of SAR (measured) = 0.038 mW/g

Test Date = 02/14/07

Ambient Temperature = 24.0degree C.

Liquid Temperature = Before 23.8 degree C. , After 23.8 degree C.



UL Apex Co., Ltd.

Head Office EMC Lab.

4383-326 Asama-cho, Ise-shi, Mie-ken 516-0021 JAPAN

Telephone: +81 596 24 8116

Facsimile: +81 596 24 8124

BHT-470BWB-CE / Body / Right side / 2437MHz /11b CCK (11Mbps)

Crest factor:1.6

Medium parameters used: $f = 2450$ MHz; $\sigma = 1.98$ mho/m; $\epsilon_r = 50.1$; $\rho = 1000$ kg/m³

Phantom section: Flat Section

Measurement Standard: DASYS4 (High Precision Assessment)

DASY4 Configuration:

Probe: EX3DV3 - SN3507; ConvF(8.24, 8.24, 8.24); Calibrated: 2006/05/26

Sensor-Surface: 2mm (Mechanical Surface Detection)

Electronics: DAE3 Sn509; Calibrated: 2006/06/15

Phantom: SAM 1196

Measurement SW: DASYS4, V4.6 Build 23; Postprocessing SW: SEMCAD, V1.8 Build 160

Area Scan (81x81x1): Measurement grid: dx=15mm, dy=15mm

Maximum value of SAR (interpolated) = 0.035 mW/g

Zoom Scan (7x7x7)/Cube 0: Measurement grid: dx=5mm, dy=5mm, dz=5mm

Reference Value = 3.73 V/m; Power Drift = -0.289 dB

Peak SAR (extrapolated) = 0.047 W/kg

SAR(1 g) = 0.024 mW/g; SAR(10 g) = 0.012 mW/g

Maximum value of SAR (measured) = 0.035 mW/g

Zoom Scan (7x7x7)/Cube 1: Measurement grid: dx=5mm, dy=5mm, dz=5mm

Reference Value = 3.73 V/m; Power Drift = -0.289 dB

Peak SAR (extrapolated) = 0.027 W/kg

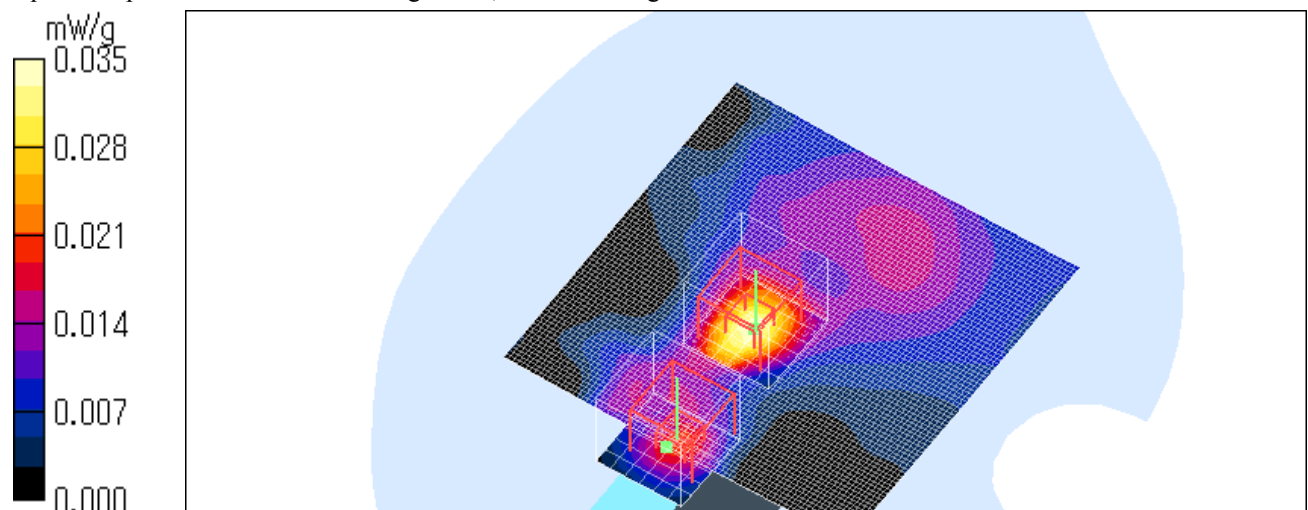
SAR(1 g) = 0.015 mW/g; SAR(10 g) = 0.00703 mW/g

Maximum value of SAR (measured) = 0.021 mW/g

Test Date = 02/14/07

Ambient Temperature = 24.0degree C.

Liquid Temperature = Before 23.8 degree C. , After 23.8 degree C.



UL Apex Co., Ltd.

Head Office EMC Lab.

4383-326 Asama-cho, Ise-shi, Mie-ken 516-0021 JAPAN

Telephone: +81 596 24 8116

Facsimile: +81 596 24 8124

BHT-470BWB-CE / Body / Left side / 2437MHz /11b DBPSK CCK (1Mbps)

Crest factor:1

Medium parameters used: $f = 2450$ MHz; $\sigma = 1.98$ mho/m; $\epsilon_r = 50.1$; $\rho = 1000$ kg/m³

Phantom section: Flat Section

Measurement Standard: DASYS4 (High Precision Assessment)

DASY4 Configuration:

Probe: EX3DV3 - SN3507; ConvF(8.24, 8.24, 8.24); Calibrated: 2006/05/26

Sensor-Surface: 2mm (Mechanical Surface Detection)

Electronics: DAE3 Sn509; Calibrated: 2006/06/15

Phantom: SAM 1196

Measurement SW: DASYS4, V4.6 Build 23; Postprocessing SW: SEMCAD, V1.8 Build 160

Area Scan (81x81x1): Measurement grid: dx=15mm, dy=15mm

Maximum value of SAR (interpolated) = 0.018 mW/g

Zoom Scan (7x7x7)/Cube 0: Measurement grid: dx=5mm, dy=5mm, dz=5mm

Reference Value = 1.10 V/m; Power Drift = 0.214 dB

Peak SAR (extrapolated) = 0.017 W/kg

SAR(1 g) = 0.00916 mW/g; SAR(10 g) = 0.00484 mW/g

Maximum value of SAR (measured) = 0.013 mW/g

Zoom Scan (7x7x7)/Cube 1: Measurement grid: dx=5mm, dy=5mm, dz=5mm

Reference Value = 1.10 V/m; Power Drift = 0.214 dB

Peak SAR (extrapolated) = 0.017 W/kg

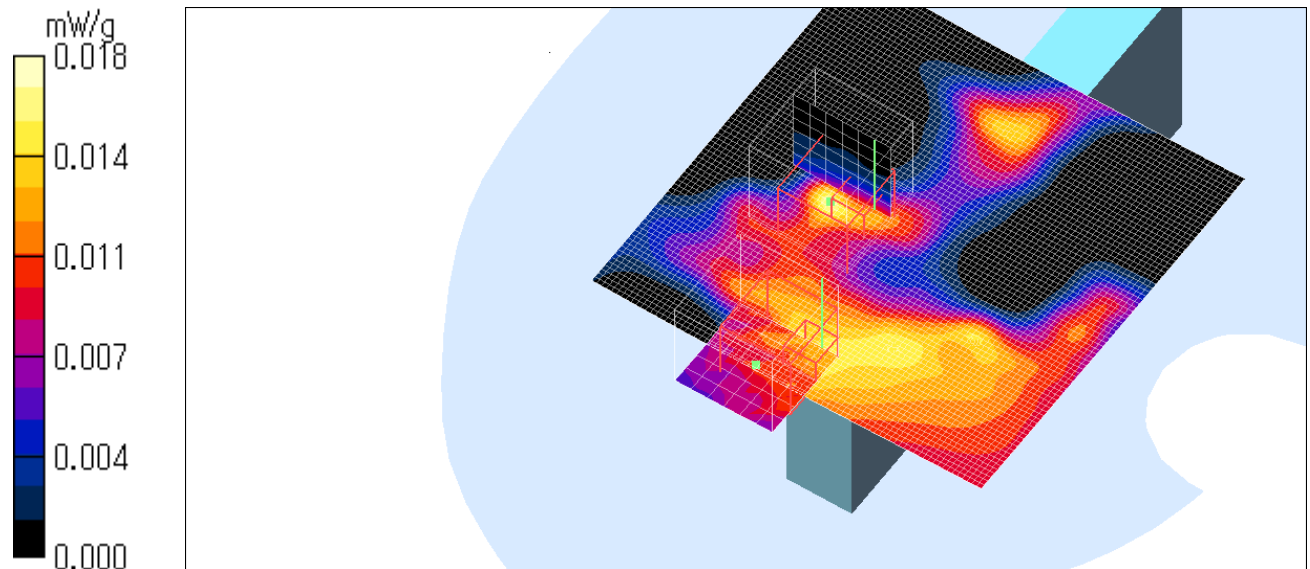
SAR(1 g) = 0.00746 mW/g; SAR(10 g) = 0.00395 mW/g

Maximum value of SAR (measured) = 0.010 mW/g

Test Date = 02/14/07

Ambient Temperature = 24.0degree C.

Liquid Temperature = Before 23.8 degree C. , After 23.8 degree C.



UL Apex Co., Ltd.

Head Office EMC Lab.

4383-326 Asama-cho, Ise-shi, Mie-ken 516-0021 JAPAN

Telephone: +81 596 24 8116

Facsimile: +81 596 24 8124

BHT-470BWB-CE / Body / Back / 2437MHz /11b DBPSK (1Mbps)

Crest factor:1

Medium parameters used: $f = 2450$ MHz; $\sigma = 1.98$ mho/m; $\epsilon_r = 50.1$; $\rho = 1000$ kg/m³

Phantom section: Flat Section

Measurement Standard: DASYS4 (High Precision Assessment)

DASY4 Configuration:

Probe: EX3DV3 - SN3507; ConvF(8.24, 8.24, 8.24); Calibrated: 2006/05/26

Sensor-Surface: 2mm (Mechanical Surface Detection)

Electronics: DAE3 Sn509; Calibrated: 2006/06/15

Phantom: SAM 1196

Measurement SW: DASYS4, V4.6 Build 23; Postprocessing SW: SEMCAD, V1.8 Build 160

Area Scan (81x81x1): Measurement grid: $dx=15$ mm, $dy=15$ mm

Maximum value of SAR (interpolated) = 0.044 mW/g

Zoom Scan (7x7x7)/Cube 0: Measurement grid: $dx=5$ mm, $dy=5$ mm, $dz=5$ mm

Reference Value = 1.16 V/m; Power Drift = -0.112 dB

Peak SAR (extrapolated) = 0.034 W/kg

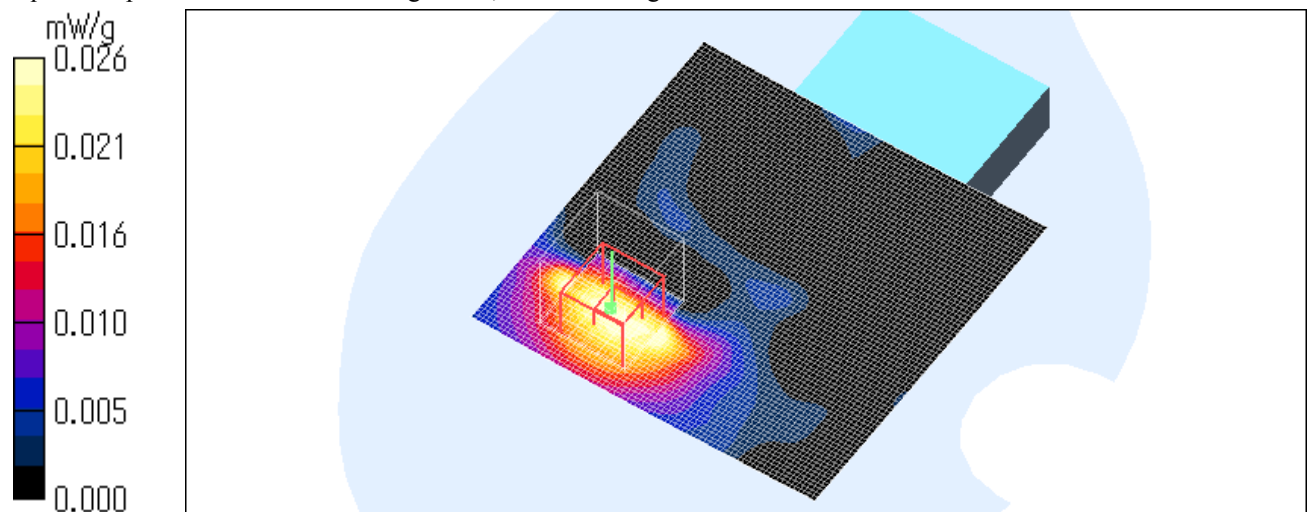
SAR(1 g) = 0.019 mW/g; SAR(10 g) = 0.010 mW/g

Maximum value of SAR (measured) = 0.026 mW/g

Test Date = 02/14/07

Ambient Temperature = 24.0degree C.

Liquid Temperature = Before 23.8 degree C. , After 23.8 degree C.



BHT-470BWB-CE / Body / Right side / 2412MHz /11b DBPSK (1Mbps)

Crest factor:1

Medium parameters used: $f = 2450$ MHz; $\sigma = 1.98$ mho/m; $\epsilon_r = 50.1$; $\rho = 1000$ kg/m³

Phantom section: Flat Section

Measurement Standard: DASYS4 (High Precision Assessment)

DASY4 Configuration:

Probe: EX3DV3 - SN3507; ConvF(8.24, 8.24, 8.24); Calibrated: 2006/05/26

Sensor-Surface: 2mm (Mechanical Surface Detection)

Electronics: DAE3 Sn509; Calibrated: 2006/06/15

Phantom: SAM 1196

Measurement SW: DASYS4, V4.6 Build 23; Postprocessing SW: SEMCAD, V1.8 Build 160

Area Scan (81x81x1): Measurement grid: dx=15mm, dy=15mm

Maximum value of SAR (interpolated) = 0.050 mW/g

Zoom Scan (7x7x7)/Cube 0: Measurement grid: dx=5mm, dy=5mm, dz=5mm

Reference Value = 3.27 V/m; Power Drift = -0.214 dB

Peak SAR (extrapolated) = 0.066 W/kg

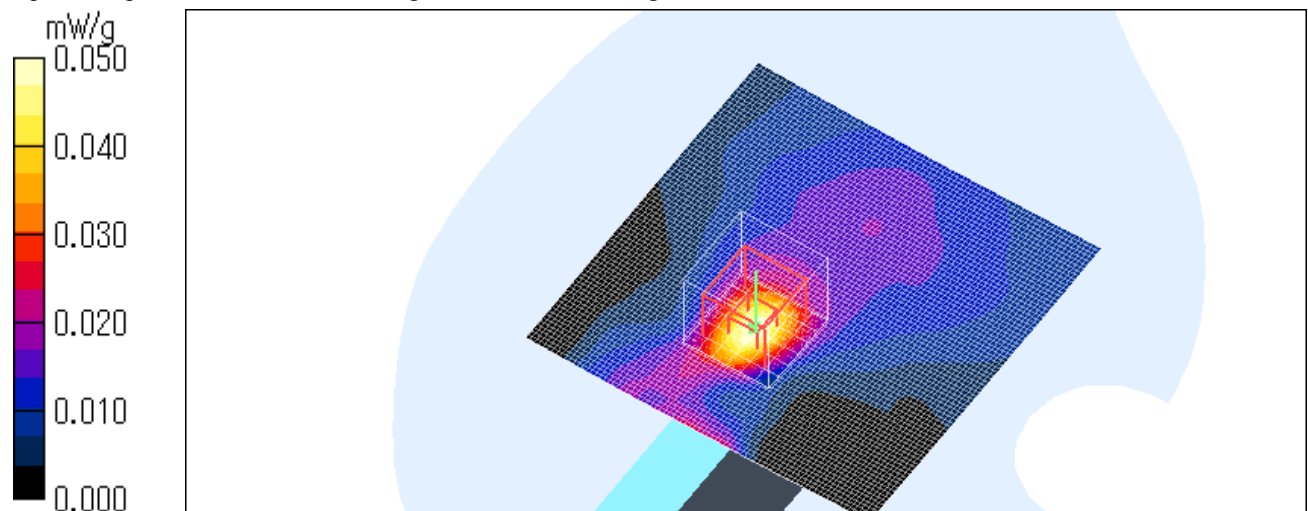
SAR(1 g) = 0.035 mW/g; SAR(10 g) = 0.018 mW/g

Maximum value of SAR (measured) = 0.050 mW/g

Test Date = 02/14/07

Ambient Temperature = 24.0degree C.

Liquid Temperature = Before 23.8 degree C. , After 23.8 degree C.



BHT-470BWB-CE / Body / Right side / 2462MHz /11b DBPSK (1Mbps)

Crest factor:1

Medium parameters used: $f = 2450$ MHz; $\sigma = 1.98$ mho/m; $\epsilon_r = 50.1$; $\rho = 1000$ kg/m³

Phantom section: Flat Section

Measurement Standard: DASYS4 (High Precision Assessment)

DASY4 Configuration:

Probe: EX3DV3 - SN3507; ConvF(8.24, 8.24, 8.24); Calibrated: 2006/05/26

Sensor-Surface: 2mm (Mechanical Surface Detection)

Electronics: DAE3 Sn509; Calibrated: 2006/06/15

Phantom: SAM 1196

Measurement SW: DASYS4, V4.6 Build 23; Postprocessing SW: SEMCAD, V1.8 Build 160

Area Scan (61x81x1): Measurement grid: dx=15mm, dy=15mm

Maximum value of SAR (interpolated) = 0.060 mW/g

Zoom Scan (7x7x7)/Cube 0: Measurement grid: dx=5mm, dy=5mm, dz=5mm

Reference Value = 2.93 V/m; Power Drift = -0.193 dB

Peak SAR (extrapolated) = 0.082 W/kg

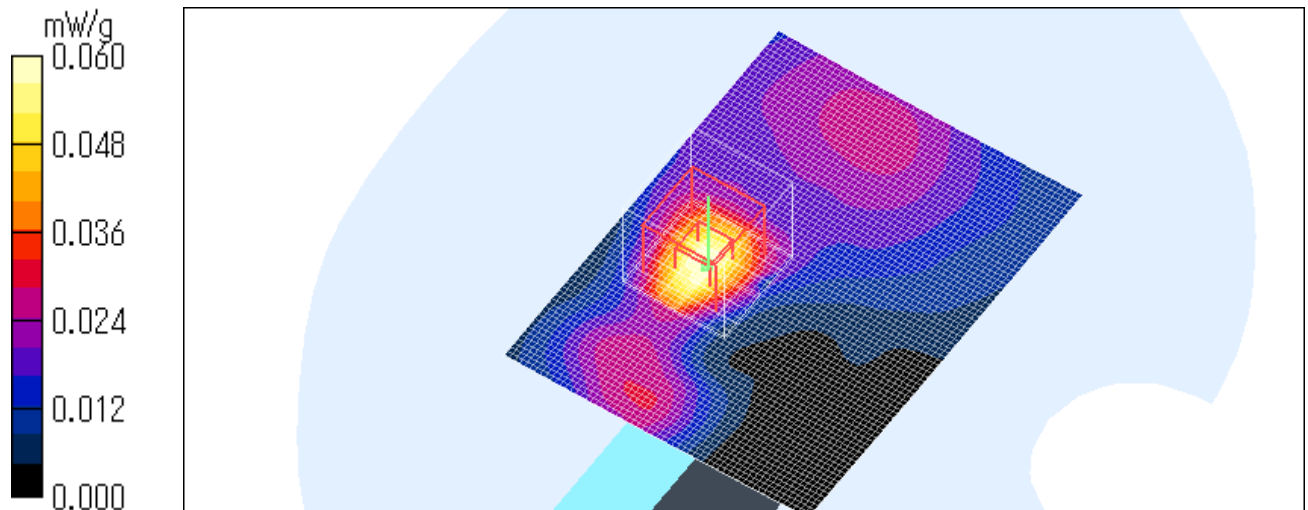
SAR(1 g) = 0.042 mW/g; SAR(10 g) = 0.021 mW/g

Maximum value of SAR (measured) = 0.060 mW/g

Test Date = 02/14/07

Ambient Temperature = 24.0degree C.

Liquid Temperature = Before 23.8 degree C. , After 23.9 degree C.



Z-axis scan at max SAR location

BHT-470BWB-CE / Body / Right side / 2462MHz /11b DBPSK (1Mbps)

Crest factor:1

Medium parameters used: $f = 2450$ MHz; $\sigma = 1.98$ mho/m; $\epsilon_r = 50.1$; $\rho = 1000$ kg/m³

Phantom section: Flat Section

Measurement Standard: DASY4 (High Precision Assessment)

DASY4 Configuration:

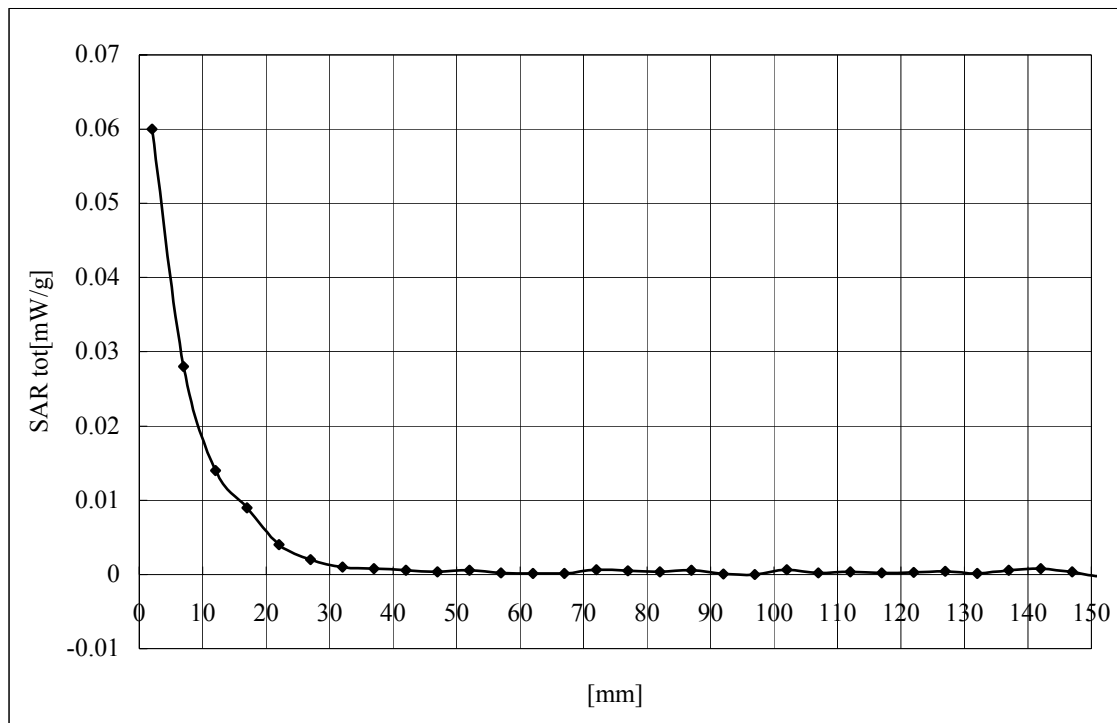
Probe: EX3DV3 - SN3507; ConvF(8.24, 8.24, 8.24); Calibrated: 2006/05/26

Sensor-Surface: 2mm (Mechanical Surface Detection)

Electronics: DAE3 Sn509; Calibrated: 2006/06/15

Phantom: SAM 1196

Measurement SW: DASY4, V4.6 Build 23; Postprocessing SW: SEMCAD, V1.8 Build 160



BHT-470BWB-CE / Body / Right side / 2437MHz /11g BPSK (6Mbps)

Crest factor:1.2

Medium parameters used: $f = 2450$ MHz; $\sigma = 1.98$ mho/m; $\epsilon_r = 50.1$; $\rho = 1000$ kg/m³

Phantom section: Flat Section

Measurement Standard: DASYS4 (High Precision Assessment)

DASY4 Configuration:

Probe: EX3DV3 - SN3507; ConvF(8.24, 8.24, 8.24); Calibrated: 2006/05/26

Sensor-Surface: 2mm (Mechanical Surface Detection)

Electronics: DAE3 Sn509; Calibrated: 2006/06/15

Phantom: SAM 1196

Measurement SW: DASYS4, V4.6 Build 23; Postprocessing SW: SEMCAD, V1.8 Build 160

Area Scan (61x81x1): Measurement grid: dx=15mm, dy=15mm

Maximum value of SAR (interpolated) = 0.027 mW/g

Zoom Scan (7x7x7)/Cube 0: Measurement grid: dx=5mm, dy=5mm, dz=5mm

Reference Value = 3.06 V/m; Power Drift = -0.291 dB

Peak SAR (extrapolated) = 0.033 W/kg

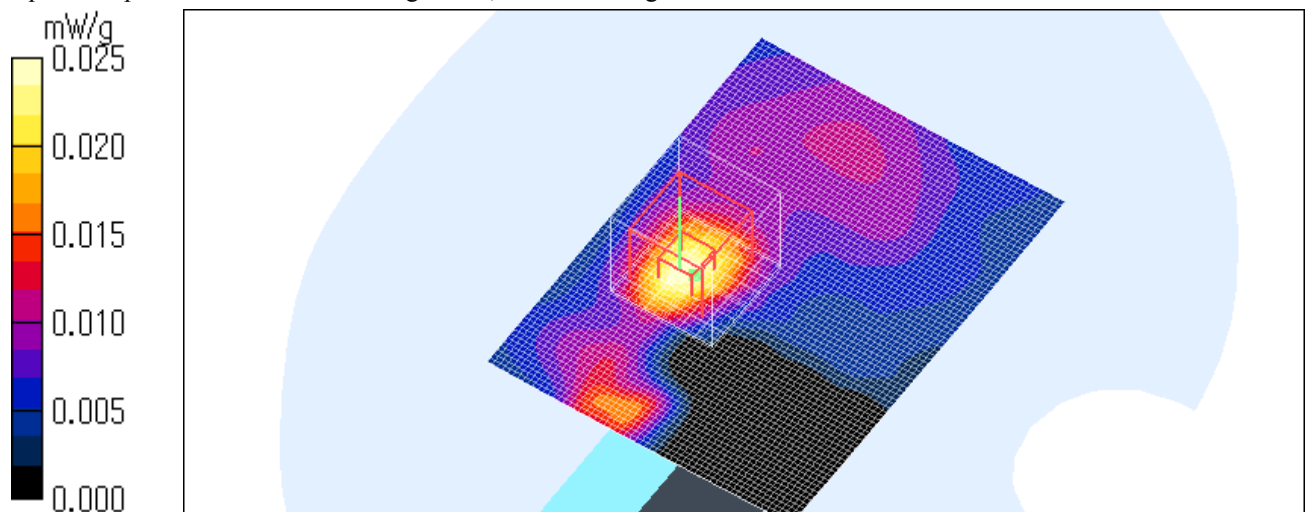
SAR(1 g) = 0.018 mW/g; SAR(10 g) = 0.00887 mW/g

Maximum value of SAR (measured) = 0.025 mW/g

Test Date = 02/15/07

Ambient Temperature = 24.5degree C.

Liquid Temperature = Before 24.0 degree C. , After 24.0 degree C.



BHT-470BWB-CE / Body / Right side / 2437MHz /11g QPSK (12Mbps)

Crest factor:1.8

Medium parameters used: $f = 2450$ MHz; $\sigma = 1.98$ mho/m; $\epsilon_r = 50.1$; $\rho = 1000$ kg/m³

Phantom section: Flat Section

Measurement Standard: DASY4 (High Precision Assessment)

DASY4 Configuration:

Probe: EX3DV3 - SN3507; ConvF(8.24, 8.24, 8.24); Calibrated: 2006/05/26

Sensor-Surface: 2mm (Mechanical Surface Detection)

Electronics: DAE3 Sn509; Calibrated: 2006/06/15

Phantom: SAM 1196

Measurement SW: DASY4, V4.6 Build 23; Postprocessing SW: SEMCAD, V1.8 Build 160

Area Scan (61x81x1): Measurement grid: dx=15mm, dy=15mm

Maximum value of SAR (interpolated) = 0.021 mW/g

Zoom Scan (7x7x7)/Cube 0: Measurement grid: dx=5mm, dy=5mm, dz=5mm

Reference Value = 2.94 V/m; Power Drift = 0.270 dB

Peak SAR (extrapolated) = 0.026 W/kg

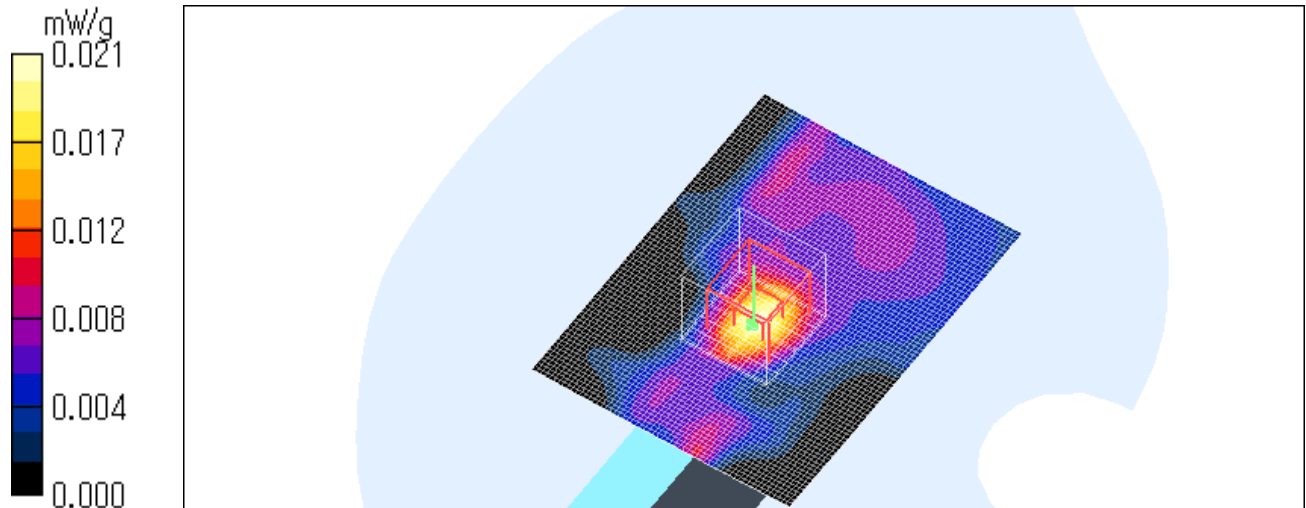
SAR(1 g) = 0.014 mW/g; SAR(10 g) = 0.00702 mW/g

Maximum value of SAR (measured) = 0.021 mW/g

Test Date = 02/15/07

Ambient Temperature = 24.5degree C.

Liquid Temperature = Before 24.0 degree C. , After 24.0 degree C.



BHT-470BWB-CE / Body / Right side / 2437MHz /11g 16QAM (24Mbps)

Crest factor:3.6

Medium parameters used: $f = 2450$ MHz; $\sigma = 1.98$ mho/m; $\epsilon_r = 50.1$; $\rho = 1000$ kg/m³

Phantom section: Flat Section

Measurement Standard: DASY4 (High Precision Assessment)

DASY4 Configuration:

Probe: EX3DV3 - SN3507; ConvF(8.24, 8.24, 8.24); Calibrated: 2006/05/26

Sensor-Surface: 2mm (Mechanical Surface Detection)

Electronics: DAE3 Sn509; Calibrated: 2006/06/15

Phantom: SAM 1196

Measurement SW: DASY4, V4.6 Build 23; Postprocessing SW: SEMCAD, V1.8 Build 160

Area Scan (61x81x1): Measurement grid: dx=15mm, dy=15mm

Maximum value of SAR (interpolated) = 0.017 mW/g

Zoom Scan (7x7x7)/Cube 0: Measurement grid: dx=5mm, dy=5mm, dz=5mm

Reference Value = 2.14 V/m; Power Drift = 0.044 dB

Peak SAR (extrapolated) = 0.029 W/kg

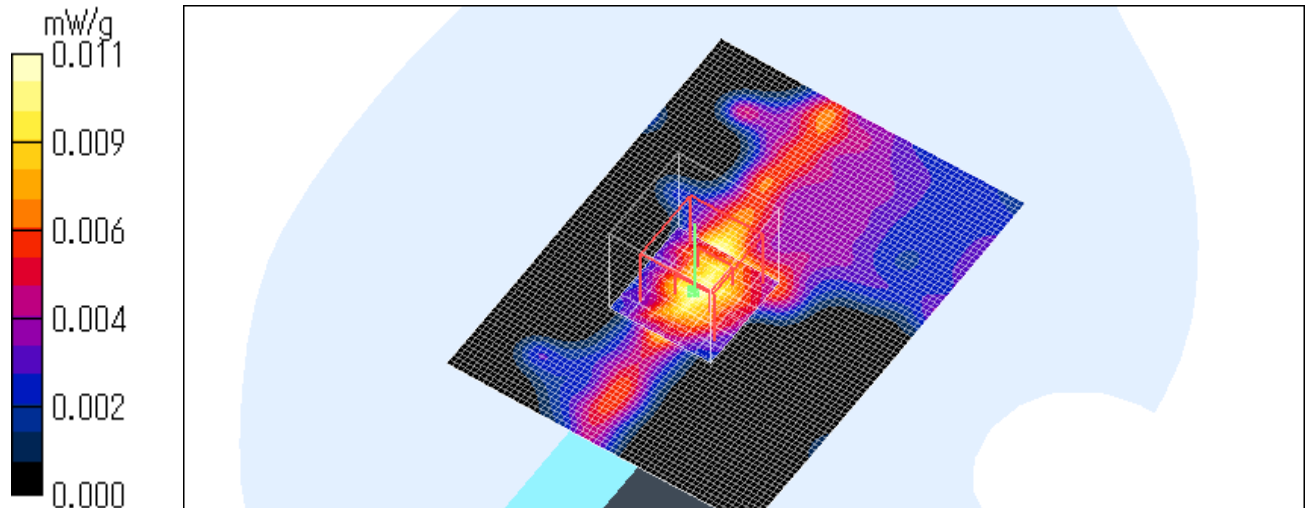
SAR(1 g) = 0.00688 mW/g; SAR(10 g) = 0.0033 mW/g

Maximum value of SAR (measured) = 0.011 mW/g

Test Date = 02/15/07

Ambient Temperature = 24.5degree C.

Liquid Temperature = Before 24.0 degree C. , After 24.0 degree C.



BHT-470BWB-CE / Body / Right side / 2437MHz /11g 64QAM (48Mbps)

Crest factor:6.9

Medium parameters used: $f = 2450$ MHz; $\sigma = 1.98$ mho/m; $\epsilon_r = 50.1$; $\rho = 1000$ kg/m³

Phantom section: Flat Section

Measurement Standard: DASYS4 (High Precision Assessment)

DASY4 Configuration:

Probe: EX3DV3 - SN3507; ConvF(8.24, 8.24, 8.24); Calibrated: 2006/05/26

Sensor-Surface: 2mm (Mechanical Surface Detection)

Electronics: DAE3 Sn509; Calibrated: 2006/06/15

Phantom: SAM 1196

Measurement SW: DASYS4, V4.6 Build 23; Postprocessing SW: SEMCAD, V1.8 Build 160

Area Scan (61x81x1): Measurement grid: dx=15mm, dy=15mm

Maximum value of SAR (interpolated) = 0.005 mW/g

Zoom Scan (7x7x7)/Cube 0: Measurement grid: dx=5mm, dy=5mm, dz=5mm

Reference Value = 1.07 V/m; Power Drift = -0.216 dB

Peak SAR (extrapolated) = 0.008 W/kg

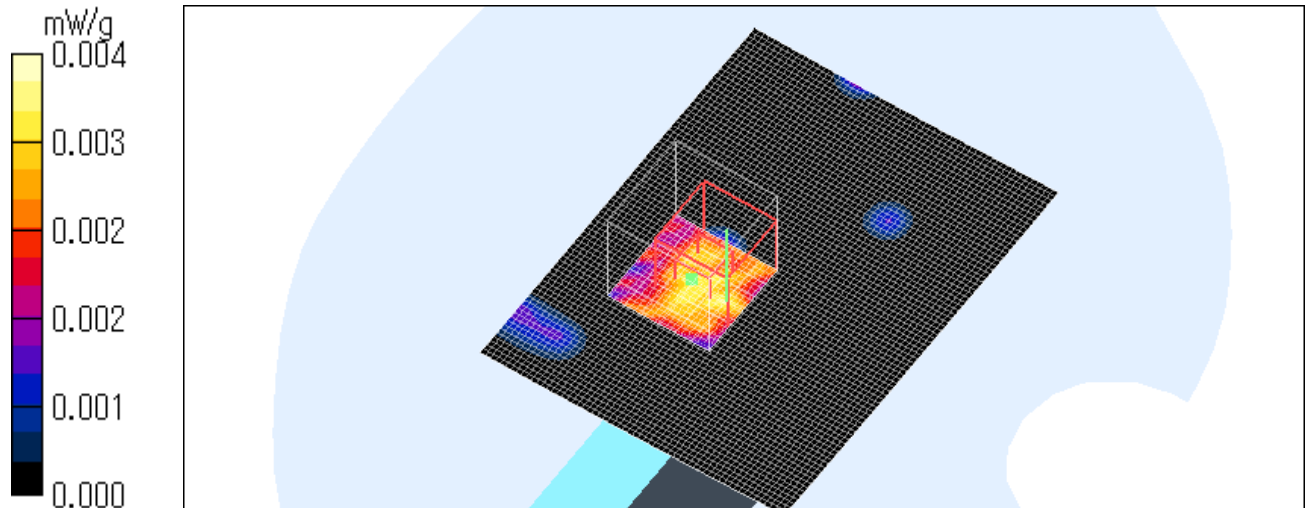
SAR(1 g) = 0.00236 mW/g; SAR(10 g) = 0.000492 mW/g

Maximum value of SAR (measured) = 0.004 mW/g

Test Date = 02/15/07

Ambient Temperature = 24.5degree C.

Liquid Temperature = Before 24.0 degree C. , After 24.0 degree C.



BHT-470BWB-CE / Body / Left side / 2437MHz /11g BPSK (6Mbps)

Crest factor:1.2

Medium parameters used: $f = 2450$ MHz; $\sigma = 1.98$ mho/m; $\epsilon_r = 50.1$; $\rho = 1000$ kg/m³

Phantom section: Flat Section

Measurement Standard: DASYS4 (High Precision Assessment)

DASY4 Configuration:

Probe: EX3DV3 - SN3507; ConvF(8.24, 8.24, 8.24); Calibrated: 2006/05/26

Sensor-Surface: 2mm (Mechanical Surface Detection)

Electronics: DAE3 Sn509; Calibrated: 2006/06/15

Phantom: SAM 1196

Measurement SW: DASYS4, V4.6 Build 23; Postprocessing SW: SEMCAD, V1.8 Build 160

Area Scan (61x81x1): Measurement grid: dx=15mm, dy=15mm

Maximum value of SAR (interpolated) = 0.014 mW/g

Zoom Scan (7x7x7)/Cube 1: Measurement grid: dx=5mm, dy=5mm, dz=5mm

Reference Value = 1.45 V/m; Power Drift = -0.250 dB

Peak SAR (extrapolated) = 0.013 W/kg

SAR(1 g) = 0.00602 mW/g; SAR(10 g) = 0.00309 mW/g

Maximum value of SAR (measured) = 0.009 mW/g

Zoom Scan (7x7x7)/Cube 0: Measurement grid: dx=5mm, dy=5mm, dz=5mm

Reference Value = 1.45 V/m; Power Drift = -0.250 dB

Peak SAR (extrapolated) = 0.010 W/kg

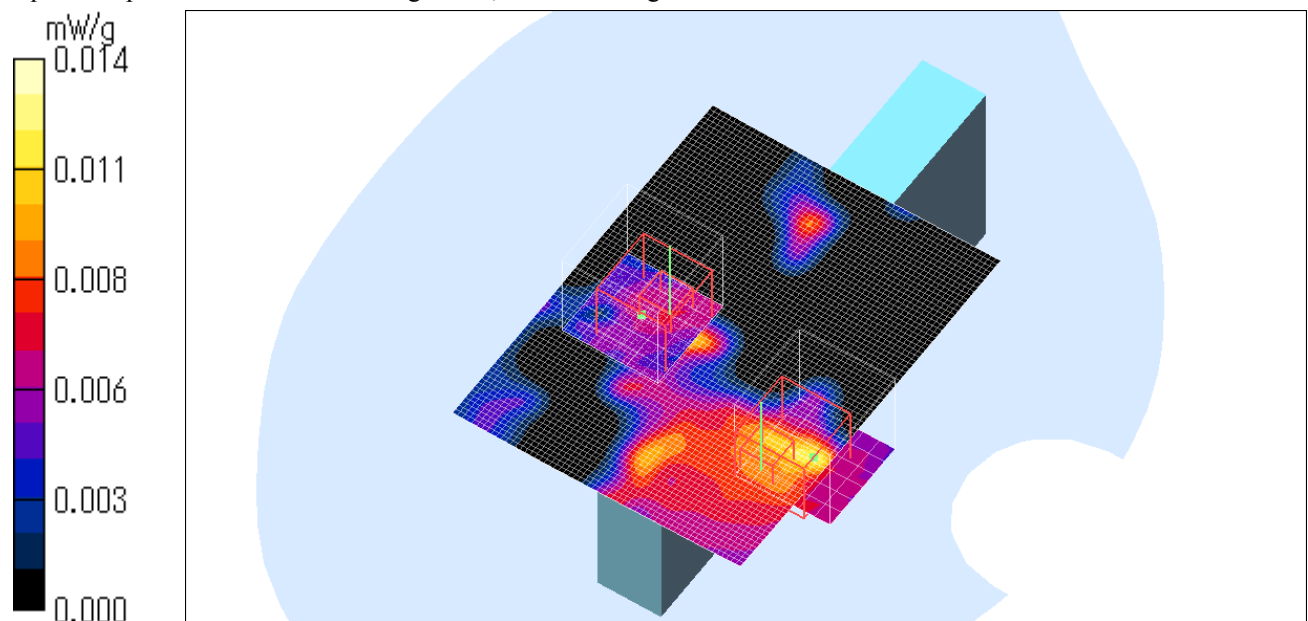
SAR(1 g) = 0.0049 mW/g; SAR(10 g) = 0.00244 mW/g

Maximum value of SAR (measured) = 0.007 mW/g

Test Date = 02/15/07

Ambient Temperature = 24.5degree C.

Liquid Temperature = Before 24.0 degree C. , After 24.0 degree C.



UL Apex Co., Ltd.

Head Office EMC Lab.

4383-326 Asama-cho, Ise-shi, Mie-ken 516-0021 JAPAN

Telephone: +81 596 24 8116

Facsimile: +81 596 24 8124

BHT-470BWB-CE / Body / Back / 2437MHz /11g BPSK (6Mbps)

Crest factor:1.2

Medium parameters used: $f = 2450$ MHz; $\sigma = 1.98$ mho/m; $\epsilon_r = 50.1$; $\rho = 1000$ kg/m³

Phantom section: Flat Section

Measurement Standard: DASYS4 (High Precision Assessment)

DASY4 Configuration:

Probe: EX3DV3 - SN3507; ConvF(8.24, 8.24, 8.24); Calibrated: 2006/05/26

Sensor-Surface: 2mm (Mechanical Surface Detection)

Electronics: DAE3 Sn509; Calibrated: 2006/06/15

Phantom: SAM 1196

Measurement SW: DASYS4, V4.6 Build 23; Postprocessing SW: SEMCAD, V1.8 Build 160

Area Scan (61x81x1): Measurement grid: dx=15mm, dy=15mm

Maximum value of SAR (interpolated) = 0.018 mW/g

Zoom Scan (7x7x7)/Cube 0: Measurement grid: dx=5mm, dy=5mm, dz=5mm

Reference Value = 1.59 V/m; Power Drift = -0.180 dB

Peak SAR (extrapolated) = 0.021 W/kg

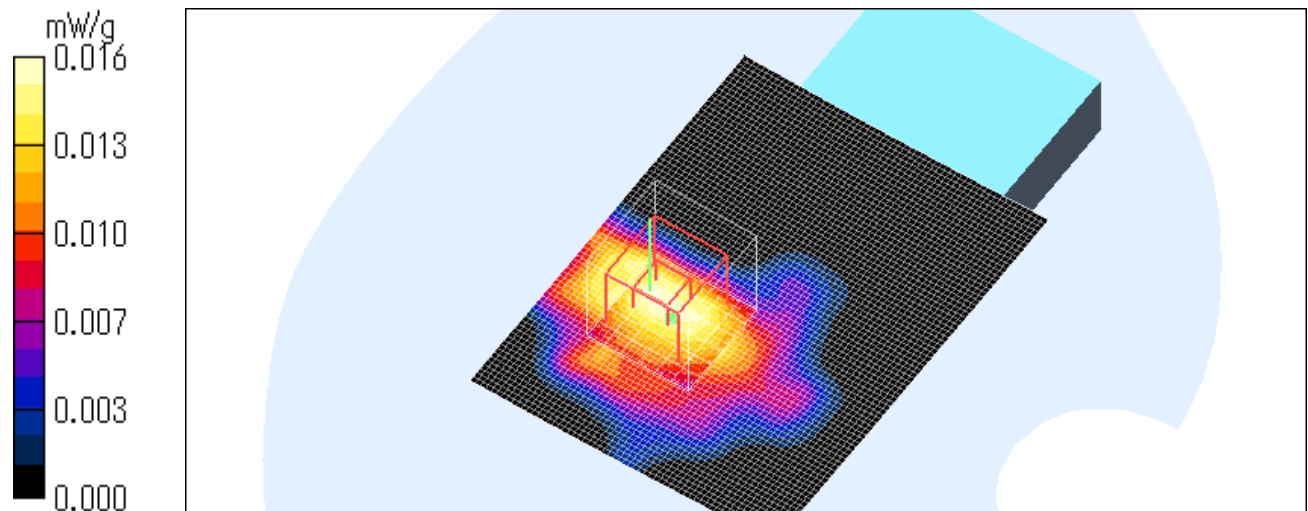
SAR(1 g) = 0.012 mW/g; SAR(10 g) = 0.00638 mW/g

Maximum value of SAR (measured) = 0.016 mW/g

Test Date = 02/15/07

Ambient Temperature = 24.5degree C.

Liquid Temperature = Before 24.0 degree C. , After 24.2 degree C.



BHT-470BWB-CE / Body / Right side / 2412MHz /11g BPSK (6Mbps)

Crest factor:1.6

Medium parameters used: $f = 2450$ MHz; $\sigma = 1.98$ mho/m; $\epsilon_r = 50.1$; $\rho = 1000$ kg/m³

Phantom section: Flat Section

Measurement Standard: DASYS4 (High Precision Assessment)

DASY4 Configuration:

Probe: EX3DV3 - SN3507; ConvF(8.24, 8.24, 8.24); Calibrated: 2006/05/26

Sensor-Surface: 2mm (Mechanical Surface Detection)

Electronics: DAE3 Sn509; Calibrated: 2006/06/15

Phantom: SAM 1196

Measurement SW: DASYS4, V4.6 Build 23; Postprocessing SW: SEMCAD, V1.8 Build 160

Area Scan (61x81x1): Measurement grid: dx=15mm, dy=15mm

Maximum value of SAR (interpolated) = 0.054 mW/g

Zoom Scan (7x7x7)/Cube 0: Measurement grid: dx=5mm, dy=5mm, dz=5mm

Reference Value = 2.81 V/m; Power Drift = -0.134 dB

Peak SAR (extrapolated) = 0.068 W/kg

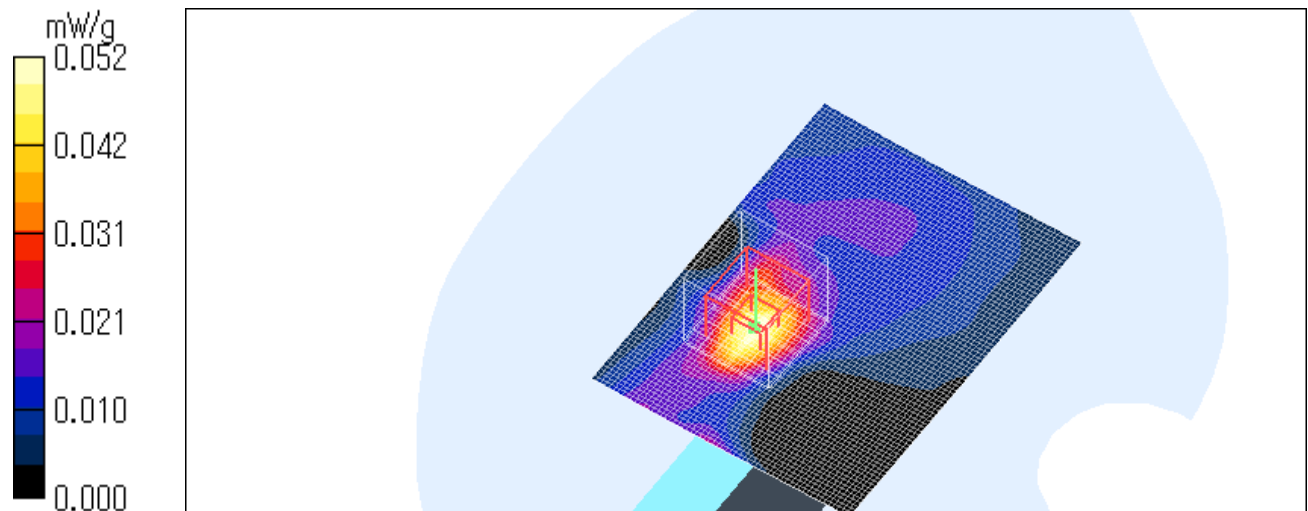
SAR(1 g) = 0.036 mW/g; SAR(10 g) = 0.018 mW/g

Maximum value of SAR (measured) = 0.052 mW/g

Test Date = 02/15/07

Ambient Temperature = 24.5degree C.

Liquid Temperature = Before 24.2 degree C. , After 24.2 degree C.



BHT-470BWB-CE / Body / Right side / 2462MHz /11g BPSK (6Mbps)

Crest factor:1.6

Medium parameters used: $f = 2450$ MHz; $\sigma = 1.98$ mho/m; $\epsilon_r = 50.1$; $\rho = 1000$ kg/m³

Phantom section: Flat Section

Measurement Standard: DASYS4 (High Precision Assessment)

DASY4 Configuration:

Probe: EX3DV3 - SN3507; ConvF(8.24, 8.24, 8.24); Calibrated: 2006/05/26

Sensor-Surface: 2mm (Mechanical Surface Detection)

Electronics: DAE3 Sn509; Calibrated: 2006/06/15

Phantom: SAM 1196

Measurement SW: DASYS4, V4.6 Build 23; Postprocessing SW: SEMCAD, V1.8 Build 160

Area Scan (61x81x1): Measurement grid: dx=15mm, dy=15mm

Maximum value of SAR (interpolated) = 0.037 mW/g

Zoom Scan (7x7x7)/Cube 0: Measurement grid: dx=5mm, dy=5mm, dz=5mm

Reference Value = 2.44 V/m; Power Drift = -0.085 dB

Peak SAR (extrapolated) = 0.047 W/kg

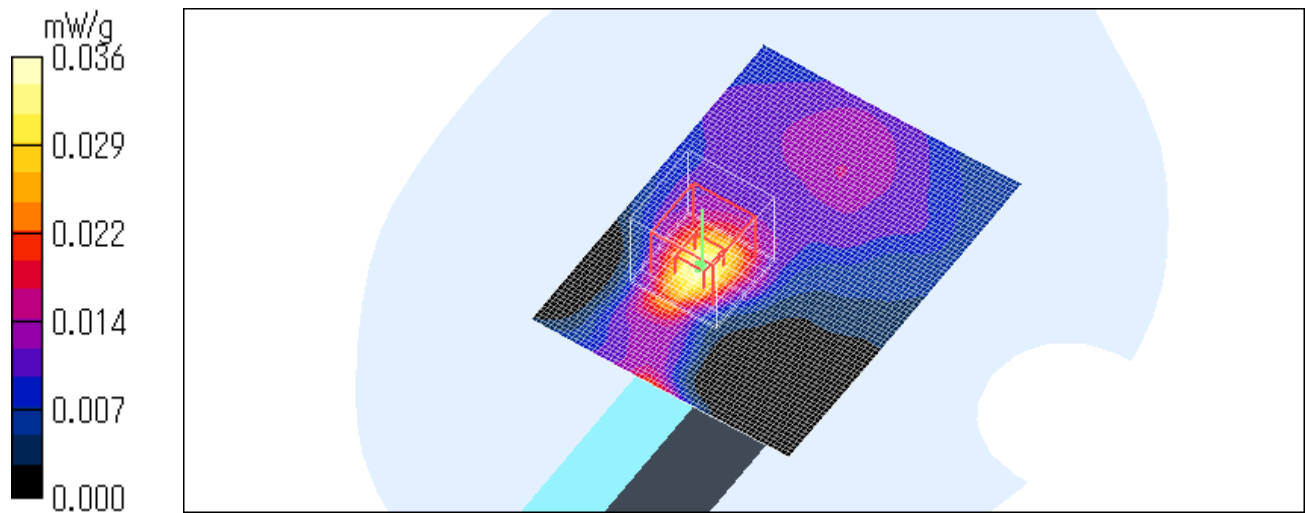
SAR(1 g) = 0.024 mW/g; SAR(10 g) = 0.012 mW/g

Maximum value of SAR (measured) = 0.036 mW/g

Test Date = 02/15/07

Ambient Temperature = 24.5degree C.

Liquid Temperature = Before 24.2 degree C. , After 24.2 degree C.



BHT-470BWB-CE / Body / Right side 5mm / 2462MHz /11b DBPSK (1Mbps)

Crest factor:1.1

Medium parameters used: $f = 2450$ MHz; $\sigma = 1.98$ mho/m; $\epsilon_r = 50.1$; $\rho = 1000$ kg/m³

Phantom section: Flat Section

Measurement Standard: DASYS4 (High Precision Assessment)

DASY4 Configuration:

Probe: EX3DV3 - SN3507; ConvF(8.24, 8.24, 8.24); Calibrated: 2006/05/26

Sensor-Surface: 2mm (Mechanical Surface Detection)

Electronics: DAE3 Sn509; Calibrated: 2006/06/15

Phantom: SAM 1196

Measurement SW: DASYS4, V4.6 Build 23; Postprocessing SW: SEMCAD, V1.8 Build 160

Area Scan (91x91x1): Measurement grid: dx=15mm, dy=15mm

Maximum value of SAR (interpolated) = 0.026 mW/g

Zoom Scan (7x7x7)/Cube 0: Measurement grid: dx=5mm, dy=5mm, dz=5mm

Reference Value = 2.62 V/m; Power Drift = -0.251 dB

Peak SAR (extrapolated) = 0.028 W/kg

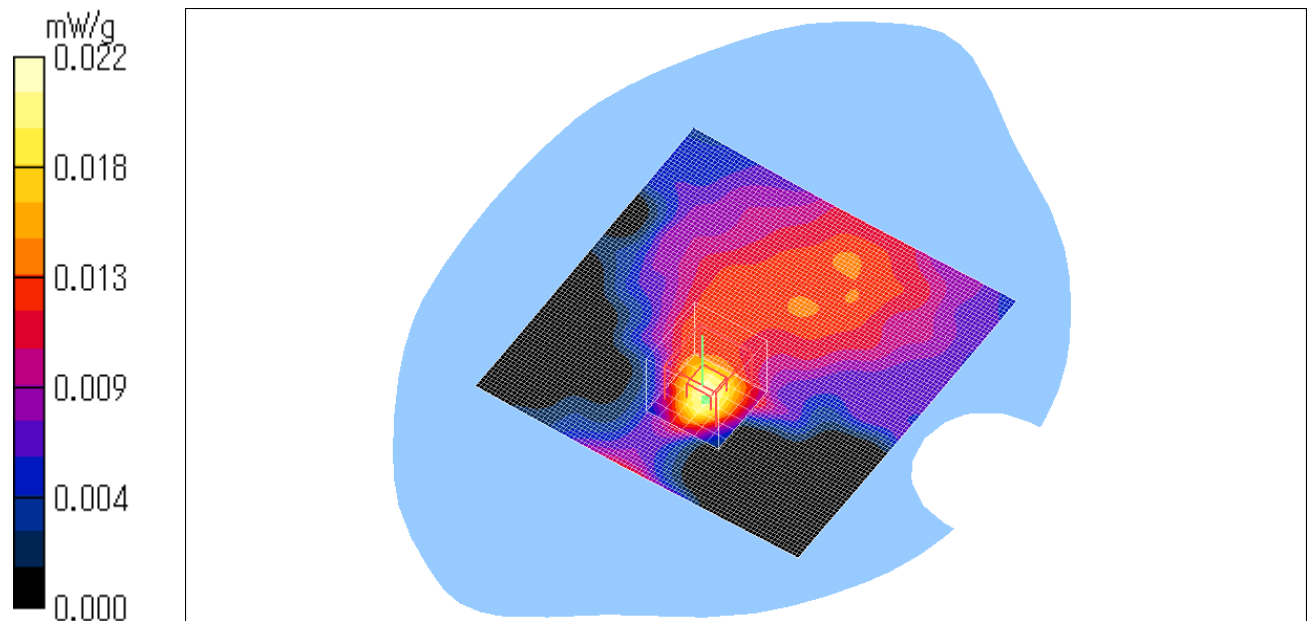
SAR(1 g) = 0.015 mW/g; SAR(10 g) = 0.00783 mW/g

Maximum value of SAR (measured) = 0.022 mW/g

Test Date = 02/15/07

Ambient Temperature = 24.5degree C.

Liquid Temperature = Before 24.2 degree C. , After 24.2 degree C.



BHT-470BWB-CE / Body / Right side 10mm / 2462MHz /11b DBPSK (1Mbps)

Crest factor:1.1

Medium parameters used: $f = 2450$ MHz; $\sigma = 1.98$ mho/m; $\epsilon_r = 50.1$; $\rho = 1000$ kg/m³

Phantom section: Flat Section

Measurement Standard: DASYS4 (High Precision Assessment)

DASY4 Configuration:

Probe: EX3DV3 - SN3507; ConvF(8.24, 8.24, 8.24); Calibrated: 2006/05/26

Sensor-Surface: 2mm (Mechanical Surface Detection)

Electronics: DAE3 Sn509; Calibrated: 2006/06/15

Phantom: SAM 1196

Measurement SW: DASYS4, V4.6 Build 23; Postprocessing SW: SEMCAD, V1.8 Build 160

Area Scan (91x91x1): Measurement grid: dx=15mm, dy=15mm

Maximum value of SAR (interpolated) = 0.020 mW/g

Zoom Scan (7x7x7)/Cube 0: Measurement grid: dx=5mm, dy=5mm, dz=5mm

Reference Value = 2.53 V/m; Power Drift = -0.257 dB

Peak SAR (extrapolated) = 0.013 W/kg

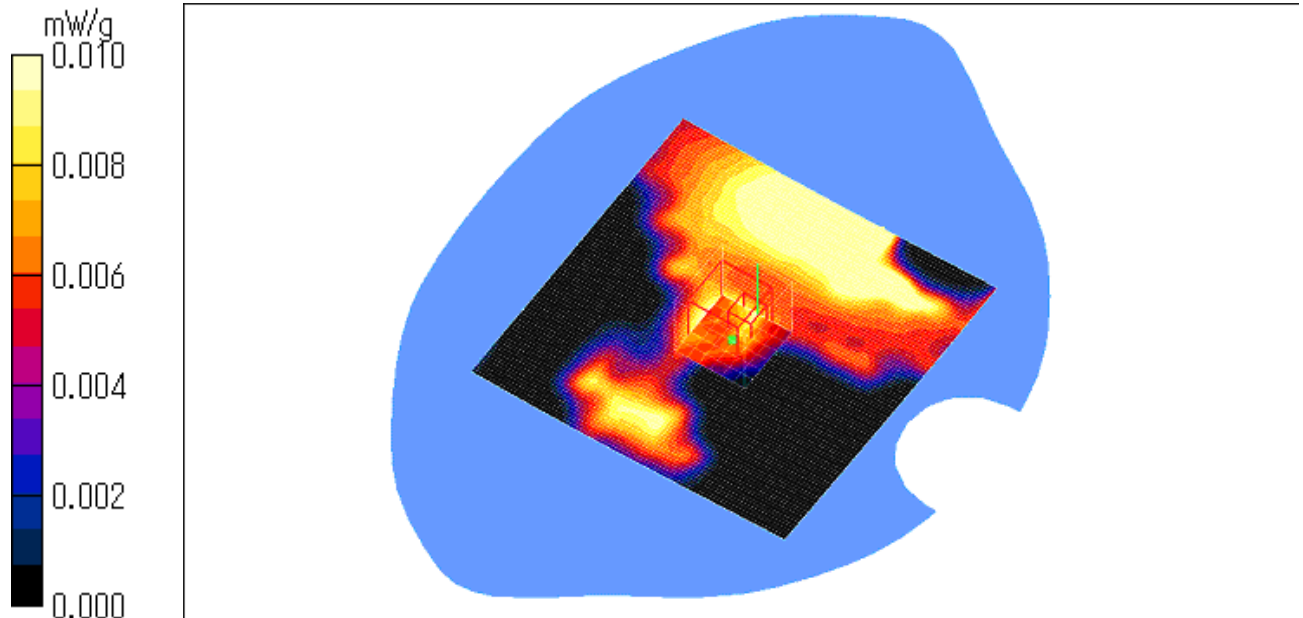
SAR(1 g) = 0.00616 mW/g; SAR(10 g) = 0.00291 mW/g

Maximum value of SAR (measured) = 0.010 mW/g

Test Date = 02/15/07

Ambient Temperature = 24.5degree C.

Liquid Temperature = Before 24.2 degree C. , After 24.2 degree C.



3. Measurement data / Bluetooth BHT-470BWB-CE / Body / Back / 2441MHz /Bluetooth

Crest factor:1.3

Medium parameters used: $f = 2450$ MHz; $\sigma = 2$ mho/m; $\epsilon_r = 50.1$; $\rho = 1000$ kg/m³

Phantom section: Flat Section

Measurement Standard: DASYS4 (High Precision Assessment)

DASY4 Configuration:

Probe: EX3DV3 - SN3507; ConvF(8.24, 8.24, 8.24); Calibrated: 2006/05/26

Sensor-Surface: 2mm (Mechanical Surface Detection)

Electronics: DAE3 Sn509; Calibrated: 2006/06/15

Phantom: SAM 1196

Measurement SW: DASYS4, V4.6 Build 23; Postprocessing SW: SEMCAD, V1.8 Build 160

Area Scan (61x91x1): Measurement grid: dx=15mm, dy=15mm

Maximum value of SAR (interpolated) = 0.005 mW/g

Zoom Scan (7x7x7)/Cube 0: Measurement grid: dx=5mm, dy=5mm, dz=5mm

Reference Value = 1.18 V/m; Power Drift = 0.151 dB

Peak SAR (extrapolated) = 0.010 W/kg

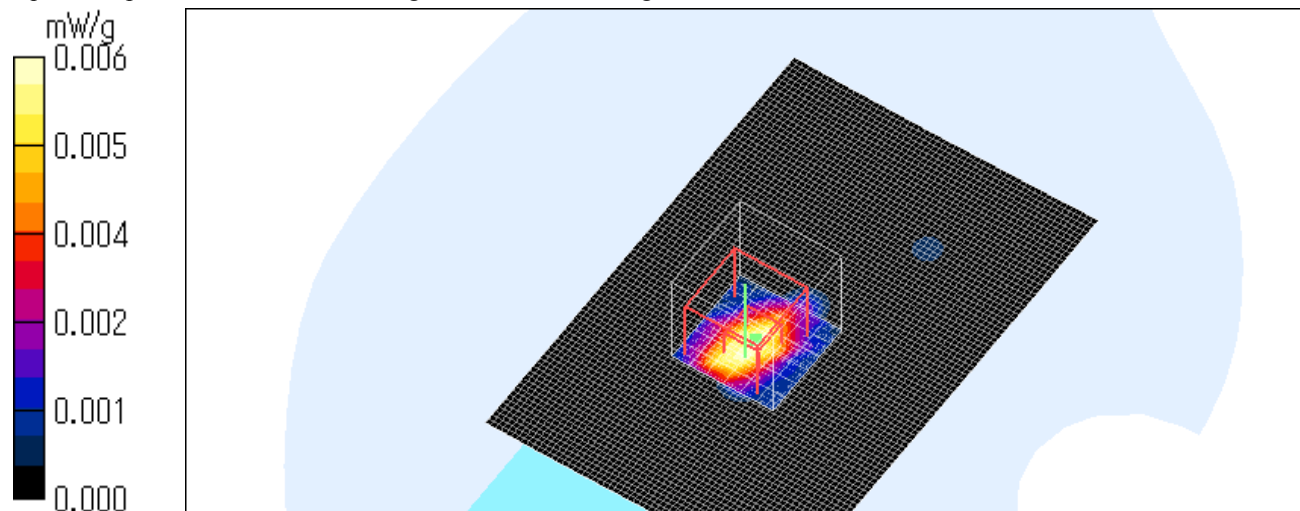
SAR(1 g) = 0.00358 mW/g; SAR(10 g) = 0.00133 mW/g

Maximum value of SAR (measured) = 0.006 mW/g

Test Date = 11/25/06

Ambient Temperature = 25.0 degree C.

Liquid Temperature = Before 23.4 degree C. , After 23.4degree C.



BHT-470BWB-CE / Body / Right side / 2441MHz /Bluetooth

Crest factor:1.3

Medium parameters used: $f = 2450$ MHz; $\sigma = 2$ mho/m; $\epsilon_r = 50.1$; $\rho = 1000$ kg/m³

Phantom section: Flat Section

Measurement Standard: DASYS4 (High Precision Assessment)

DASY4 Configuration:

Probe: EX3DV3 - SN3507; ConvF(8.24, 8.24, 8.24); Calibrated: 2006/05/26

Sensor-Surface: 2mm (Mechanical Surface Detection)

Electronics: DAE3 Sn509; Calibrated: 2006/06/15

Phantom: SAM 1196

Measurement SW: DASYS4, V4.6 Build 23; Postprocessing SW: SEMCAD, V1.8 Build 160

Area Scan (61x91x1): Measurement grid: dx=15mm, dy=15mm

Maximum value of SAR (interpolated) = 0.018 mW/g

Zoom Scan (7x7x7)/Cube 0: Measurement grid: dx=5mm, dy=5mm, dz=5mm

Reference Value = 0.000 V/m; Power Drift = 0.000 dB

Peak SAR (extrapolated) = 0.024 W/kg

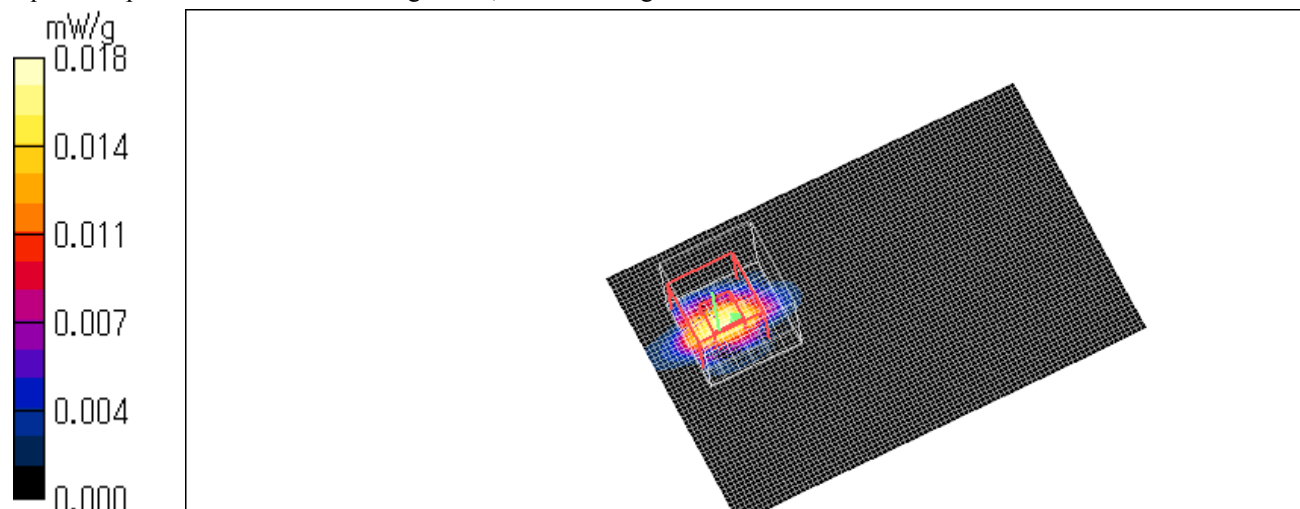
SAR(1 g) = 0.011 mW/g; SAR(10 g) = 0.0043 mW/g

Maximum value of SAR (measured) = 0.018 mW/g

Test Date = 11/25/06

Ambient Temperature = 25.0 degree C.

Liquid Temperature = Before 23.4 degree C. , After 23.4degree C.



BHT-470BWB-CE / Body / Left side / 2441MHz /Bluetooth

Crest factor:1.3

Medium parameters used: $f = 2450$ MHz; $\sigma = 2$ mho/m; $\epsilon_r = 50.1$; $\rho = 1000$ kg/m³

Phantom section: Flat Section

Measurement Standard: DASYS4 (High Precision Assessment)

DASY4 Configuration:

Probe: EX3DV3 - SN3507; ConvF(8.24, 8.24, 8.24); Calibrated: 2006/05/26

Sensor-Surface: 2mm (Mechanical Surface Detection)

Electronics: DAE3 Sn509; Calibrated: 2006/06/15

Phantom: SAM 1196

Measurement SW: DASYS4, V4.6 Build 23; Postprocessing SW: SEMCAD, V1.8 Build 160

Area Scan (61x91x1): Measurement grid: dx=15mm, dy=15mm

Maximum value of SAR (interpolated) = 0.000 mW/g

Zoom Scan (7x7x7)/Cube 0: Measurement grid: dx=5mm, dy=5mm, dz=5mm

Reference Value = 0.497 V/m; Power Drift = 0.097 dB

Peak SAR (extrapolated) = 0.001 W/kg

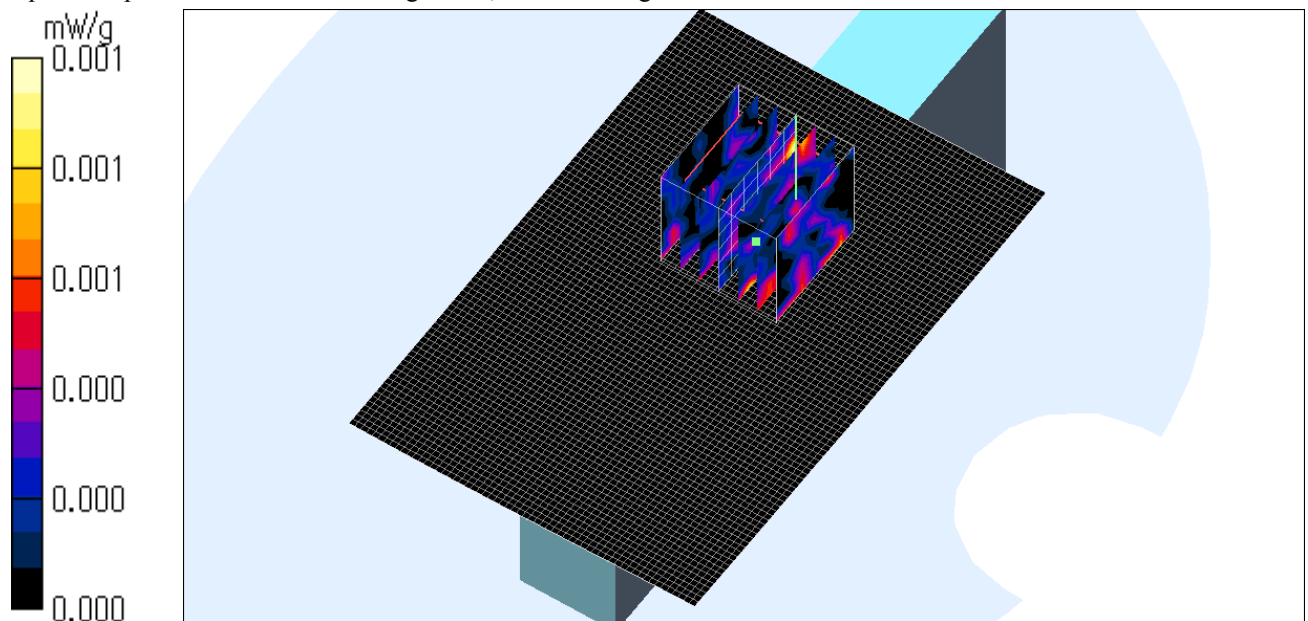
SAR(1 g) = 1.74e-005 mW/g; SAR(10 g) = 3.9e-006 mW/g

Maximum value of SAR (measured) = 0.001 mW/g

Test Date = 11/25/06

Ambient Temperature = 25.0 degree C.

Liquid Temperature = Before 23.4 degree C. , After 23.4degree C.



BHT-470BWB-CE / Body / Right side / 2402MHz /Bluetooth

Crest factor:1.3

Medium parameters used: $f = 2450$ MHz; $\sigma = 2$ mho/m; $\epsilon_r = 50.1$; $\rho = 1000$ kg/m³

Phantom section: Flat Section

Measurement Standard: DASYS4 (High Precision Assessment)

DASY4 Configuration:

Probe: EX3DV3 - SN3507; ConvF(8.24, 8.24, 8.24); Calibrated: 2006/05/26

Sensor-Surface: 2mm (Mechanical Surface Detection)

Electronics: DAE3 Sn509; Calibrated: 2006/06/15

Phantom: SAM 1196

Measurement SW: DASYS4, V4.6 Build 23; Postprocessing SW: SEMCAD, V1.8 Build 160

Area Scan (61x91x1): Measurement grid: dx=15mm, dy=15mm

Maximum value of SAR (interpolated) = 0.029 mW/g

Zoom Scan (7x7x7)/Cube 0: Measurement grid: dx=5mm, dy=5mm, dz=5mm

Reference Value = 0.384 V/m; Power Drift = 0.130 dB

Peak SAR (extrapolated) = 0.021 W/kg

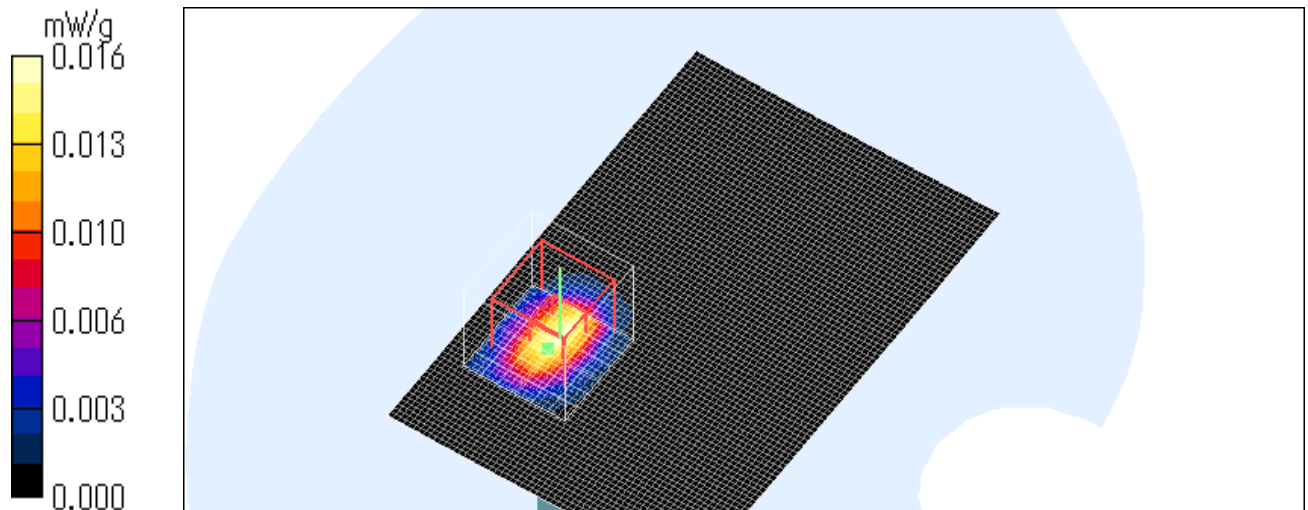
SAR(1 g) = 0.010 mW/g; SAR(10 g) = 0.00456 mW/g

Maximum value of SAR (measured) = 0.016 mW/g

Test Date = 11/25/06

Ambient Temperature = 25.0 degree C.

Liquid Temperature = Before 23.5 degree C. , After 23.6degree C.



BHT-470BWB-CE / Body / Right side / 2480MHz /Bluetooth

Crest factor:1.2

Medium parameters used: $f = 2450$ MHz; $\sigma = 2$ mho/m; $\epsilon_r = 50.1$; $\rho = 1000$ kg/m³

Phantom section: Flat Section

Measurement Standard: DASYS4 (High Precision Assessment)

DASY4 Configuration:

Probe: EX3DV3 - SN3507; ConvF(8.24, 8.24, 8.24); Calibrated: 2006/05/26

Sensor-Surface: 2mm (Mechanical Surface Detection)

Electronics: DAE3 Sn509; Calibrated: 2006/06/15

Phantom: SAM 1196

Measurement SW: DASYS4, V4.6 Build 23; Postprocessing SW: SEMCAD, V1.8 Build 160

Area Scan (61x91x1): Measurement grid: dx=15mm, dy=15mm

Maximum value of SAR (interpolated) = 0.026 mW/g

Zoom Scan (7x7x7)/Cube 0: Measurement grid: dx=5mm, dy=5mm, dz=5mm

Reference Value = 0.563 V/m; Power Drift = 0.127 dB

Peak SAR (extrapolated) = 0.022 W/kg

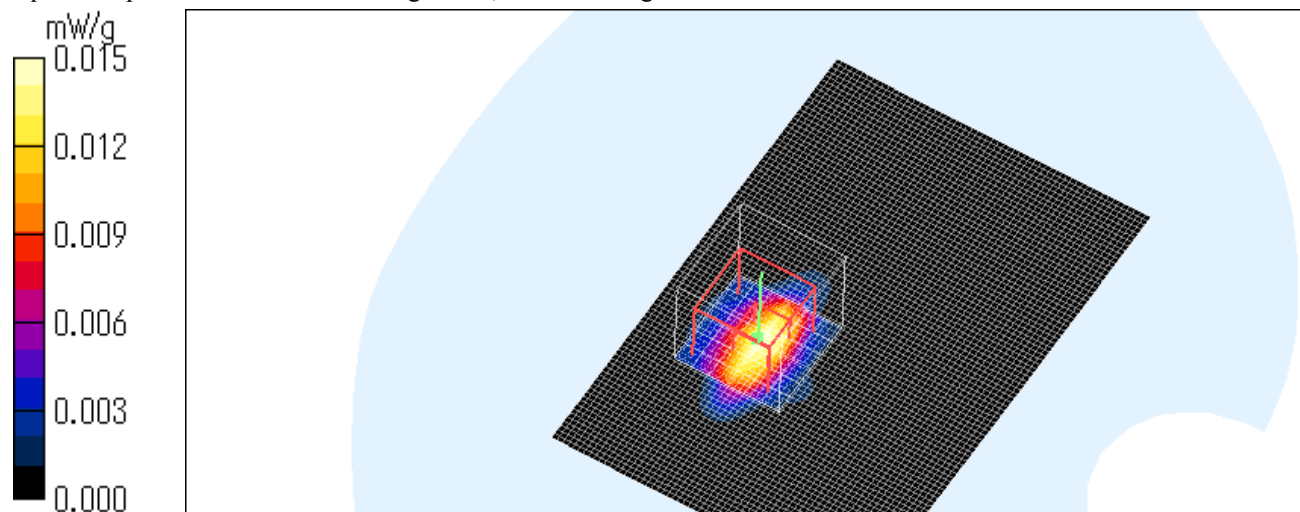
SAR(1 g) = 0.010 mW/g; SAR(10 g) = 0.00444 mW/g

Maximum value of SAR (measured) = 0.015 mW/g

Test Date = 11/25/06

Ambient Temperature = 25.0 degree C.

Liquid Temperature = Before 23.6 degree C. , After 23.6degree C.



APPENDIX 3: Test instruments

1. Equipment used

Control No.	Name of Equipment	Manufacture	Model number	Serial number	Calibration	
					Last Cal	due date
MPM-09	Power Meter	Anritsu	ML2495A	6K00003348	2006/09/20	2007/09/30
MPSE-12	Power sensor	Anritsu	MA2411B	011598	2006/09/20	2007/09/30
MAT-22	Attenuator(10dB) DC-18GHz	Orient Microwave	BX10-0476-00	-	2006/03/18	2007/03/31
MCC-15	Microwave Cable 1G-26.5GHz 1m	Suhner	SUCOFLEX 104	233010/4	2007/02/22	2008/02/29
MCC-26	Microwave Cable 1G-26.5GHz	Suhner	SUCOFLEX104	10526/4	2006/08/29	2007/08/31
MAT-23	Attenuator(10dB) DC-18GHz	Orient Microwave	BX10-0476-00	-	2006/03/18	2007/03/31
MPM-08	Power Meter	Anritsu	ML2495A	6K00003338	2006/09/20	2007/09/30
MPSE-11	Power sensor	Anritsu	MA2411B	011737	2006/09/20	2007/09/30
MPM-01	Power Meter	Agilent	E4417A	GB41290639	2007/01/10	2008/01/31
MPSE-01	Power Sensor	Agilent	E9300B	US40010300	2006/12/20	2007/12/31
MPSE-03	Power sensor	Agilent	E9327A	US40440576	2007/01/10	2008/01/31
MAT-15	Attenuator(30dB)	Agilent	US40010300	08498-60012	2006/12/20	2007/12/31
MSG-01	Signal Genelator	Rohde & Schwarz	SMR40	100023	2007/01/18	2008/01/31
MRFA-02	Pre Amplifier	OPHIR	5056F	1005	2006/05/24	2007/05/31
MBTR14	Dual Directional Coupler	Hewlett Packard	87300C OPT020	3239A01236	N/A	N/A
MNA-01	Network Analyzer	Agilent	E8358A	US41080381	2006/02/10	2009/02/09
MPB-03	Dosimetric E-Field Probe	Schmid&Partner Engineering AG	EX3DV3	3507	2006/05/26	2007/05/31
MDAE-01	Data Acquisition Electronics	Schmid&Partner Engineering AG	DAE3 V1	509	2006/06/15	2007/06/31
MSTW-16	SAR measurement System	Schmid&Partner Engineering AG	DASY4	1021834	N/A	N/A
MDA-07	2450MHz System Validation Dipole	Schmid&Partner Engineering AG	D2450V2	713	2006/9/27	2008/9/31
MPS-01	SAM Phantom	Schmid&Partner Engineering AG	SAM Twin Phantom V4.0	1196	N/A	N/A
MDPK-01	Dielectric probe kit	Agilent	85070D	-	N/A	N/A
MOS-05	Thermo-Hygrometer	Custom	CTH-190	810201	2006/04/25	2008/04/31
MOS-10	Digital thermometer	HANNA	Checktemp-2	MOS-10	2005/03/07	2007/03/31
-	Head 2450MHz	N/A	N/A	N/A	Daily check	Target value ± 5%
-	Body 2450MHz	N/A	N/A	N/A	Daily check	Target value ± 5%
-	SAR room	-	-	-	Daily check	Ambient Noise <0.012W/kg

UL Apex Co., Ltd.

Head Office EMC Lab.

4383-326 Asama-cho, Ise-shi, Mie-ken 516-0021 JAPAN

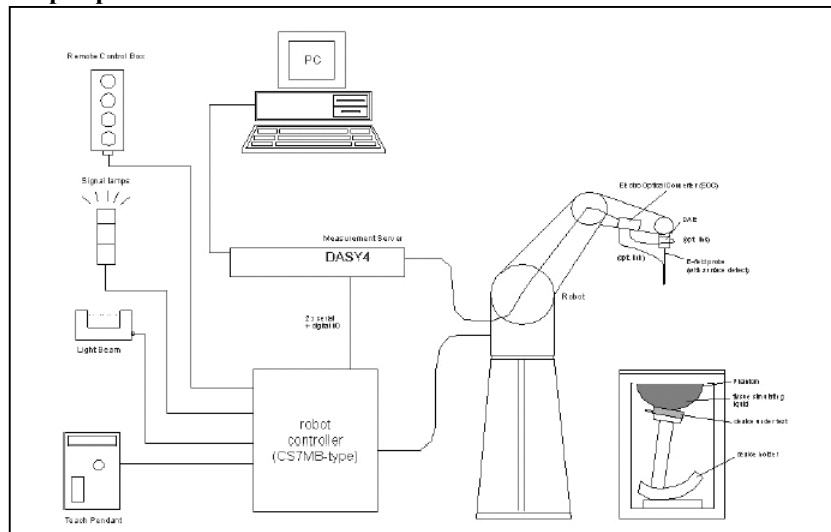
Telephone: +81 596 24 8116

Facsimile: +81 596 24 8124

2. Dosimetry assessment setup

These measurements were performed with the automated near-field scanning system DASY4 from Schmid & Partner Engineering AG (SPEAG). The system is based on a high precision robot (working range greater than 0.9 m), which positions the probes with a positional repeatability of better than ± 0.02 mm. Special E- and H-field probes have been developed for measurements close to material discontinuity, the sensors of which are directly loaded with a Schottky diode and connected via highly resistive lines to the data acquisition unit. The SAR measurements were conducted with the dosimetry probe EX3DV3, SN: 3507 (manufactured by SPEAG), designed in the classical triangular configuration and optimized for dosimetric evaluation. The probe has been calibrated according to the procedure described in [2] with accuracy of better than $\pm 10\%$. The spherical isotropy was evaluated with the procedure described in [3] and found to be better than ± 0.25 dB. The phantom used was the SAM Twin Phantom as described in FCC supplement C, IEEE P1528 and CENELEC EN50361.

3. Configuration and peripherals



The DASYS4 system for performing compliance tests consist of the following items:

1. A standard high precision 6-axis robot (Stäubli RX family) with controller and software.
An arm extension for accommodating the data acquisition electronics (DAE).
2. A dosimetric probe, i.e., an isotropic E-field probe optimized and calibrated for usage in tissue simulating liquid. The probe is equipped with an optical surface detector system.
3. A data acquisition electronic (DAE), which performs the signal amplification, signal multiplexing, AD-conversion, offset measurements, mechanical surface detection, collision detection, etc. The unit is battery powered with standard or rechargeable batteries. The signal is optically transmitted to the EOC.
4. The Electro-optical converter (EOC) performs the conversion between optical and electrical of the signals for the digital communication to the DAE and for the analog signal from the optical surface detection.
The EOC is connected to the measurement server.
5. The function of the measurement server is to perform the time critical tasks such as signal filtering, control of the robot operation and fast movement interrupts.
6. A probe alignment unit which improves the (absolute) accuracy of the probe positioning.
7. A computer operating Windows 2000.
8. DASYS4 software.
9. Remote control with teaches pendant and additional circuitry for robot safety such as warning lamps, etc.
10. The SAM twin phantom enabling testing left-hand and right-hand usage.
11. The device holder for handheld mobile phones.
12. Tissue simulating liquid mixed according to the given recipes.
13. Validation dipole kits allowing to validate the proper functioning of the system.

UL Apex Co., Ltd.

Head Office EMC Lab.

4383-326 Asama-cho, Ise-shi, Mie-ken 516-0021 JAPAN

Telephone: +81 596 24 8116

Facsimile: +81 596 24 8124

4. System components

4.2.1 EX3DV3 Probe Specification

Construction:

Symmetrical design with triangular core
Built-in shielding against static charges
PEEK enclosure material (resistant to organic solvents, e.g., glycol ether)

Calibration(S/N 3507):

Basic Broad Band Calibration in air : 10-3000 MHz
Conversion Factors(Head and Body): 450MHz,900 MHz,1810MHz, 1900,
5.2GHz,5.5GHz,5.8GHz

Frequency:

10 MHz to > 6GHz; Linearity: +/-0.2 dB(30 MHz to 3 GHz)

Directivity:

+/-0.3 dB in HSL (rotation around probe axis)
+/-0.5 dB in tissue material (rotation normal probe axis)

Dynamic Range:

10uW/g to > 100 mW/g;Linearity: +/-0.2 dB(noise: typically < 1uW/g)

Dimensions:

Overall length: 330 mm (Tip: 20 mm)
Tip diameter: 2.5mm (Body: 12 mm)
Typical distance from probe tip to dipole centers: 1 mm

Application:

Highprecision dosimetric measurement in any exposure scenario
(e.g., very strong gradient fields).Only probe which enables compliance
testing for frequencies up to 6GHz with precision of better 30%.



EX3DV3 E-field Probe

SAM Twin Phantom

Construction:

The shell corresponds to the specifications of the Specific Anthropomorphic Mannequin (SAM) phantom defined in IEEE 1528-200X, CENELEC EN 50361 and IEC 62209. It enables the dosimetric evaluation of left and right hand phone usage as well as body mounted usage at the flat phantom region. A cover prevents evaporation of the liquid. Reference markings on the phantom allow the complete setup of all predefined phantom positions and measurement grids by manually teaching three points with the robot.

Shell Thickness:

2 +/-0.2 mm

Filling Volume:

Approx. 25 liters

Dimensions:

(H x L x W): 810 x 1000 x 500 mm

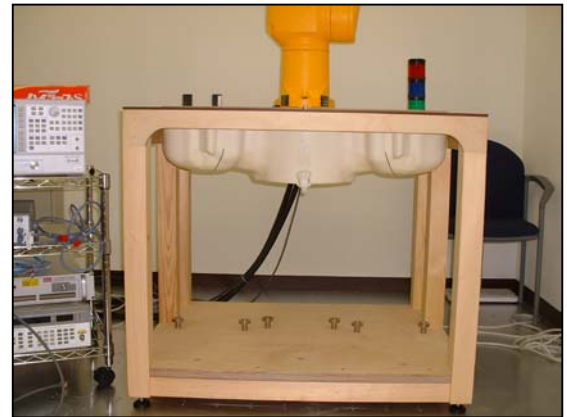
Device Holder for Transmitters

In combination with the SAM Twin Phantom V4.0, the Mounting Device enables the rotation of the mounted transmitter in spherical coordinates whereby the rotation points is the ear opening. The devices can be easily, accurately, and repeatedly positioned according to the FCC and CENELEC specifications. The device holder can be locked at different phantom locations (left head, right head, flat phantom).

* Note: A simulating human hand is not used due to the complex anatomical and geometrical structure of the hand that may produced infinite number of configurations.

To produce the worst-case condition (the hand absorbs antenna output power), the hand is omitted during the tests.

Device holder couldn't be used at this SAR measurement.



SAM Twin Phantom



Device Holder

5. Test system specifications

Robot RX60L

Number of Axes	:	6
Payload	:	1.6 kg
Reach	:	800mm
Repeatability	:	+/-0.025mm
Control Unit	:	CS7M
Programming Language	:	V+
Manufacture	:	Stäubli Unimation Corp. Robot Model: RX60

DASY4 Measurement server

Features	:	166MHz low power Pentium MMX 32MB chipdisk and 64MB RAM Serial link to DAE (with watchdog supervision) 16 Bit A/D converter for surface detection system Two serial links to robot (one for real-time communication which is supervised by watchdog) Ethernet link to PC (with watchdog supervision) Emergency stop relay for robot safety chain Two expansion slots for future applications
Manufacture	:	Schimid & Partner Engineering AG

Data Acquisition Electronic (DAE)

Features	:	Signal amplifier, multiplexer, A/D converter and control logic Serial optical link for communication with DASY4 embedded system (fully remote controlled) 2 step probe touch detector for mechanical surface detection and emergency robot stop (not in -R version)
Measurement Range	:	1 μ V to > 200 mV (16 bit resolution and two range settings: 4mV, 400mV)
Input Offset voltage	:	< 1 μ V (with auto zero)
Input Resistance	:	200 M Ω
Battery Power	:	> 10 h of operation (with two 9 V battery)
Dimension	:	60 x 60 x 68 mm
Manufacture	:	Schimid & Partner Engineering AG

Software

Item	:	Dosimetric Assesment System DASY4
Type No.	:	SD 000 401A, SD 000 402A
Software version No.	:	4.6
Manufacture / Origin	:	Schimid & Partner Engineering AG

E E-Field Probe

Model	:	EX3DV3
Serial No.	:	3507
Construction	:	Symmetrical design with triangular core
Frequency	:	10 MHz to 6 GHz
Linearity	:	+/-0.2 dB (30 MHz to 3 GHz)
Manufacture	:	Schimid & Partner Engineering AG

Phantom

Type	:	SAM Twin Phantom V4.0
Shell Material	:	Fiberglass
Thickness	:	2.0 +/-0.2 mm
Volume	:	Approx. 25 liters
Manufacture	:	Schimid & Partner Engineering AG

UL Apex Co., Ltd.

Head Office EMC Lab.

4383-326 Asama-cho, Ise-shi, Mie-ken 516-0021 JAPAN

Telephone: +81 596 24 8116

Facsimile: +81 596 24 8124

6. Simulated tissues composition of 2450MHz

Ingredient	MIXTURE(%)	
	Head 2450MHz	Muscle 2450MHz
Water	45.0	69.83
DGMBE	55.0	30.2

Note:DGMBE(Diethylenglycol-monobuthyl ether)

7. Validation measurement

7-a Simulated tissue liquid parameter confirmation

The dielectric parameters were checked prior to assessment using the HP85070D dielectric probe kit. The dielectric parameters measurement are reported in each correspondent section.

7-b Head 2450 MHz

Type of liquid : **Head 2450 MHz**
Ambient temperature (deg.c.) : **25.0(25-Nov),24.0(14-Feb),24.5(15-Feb)**
Relative Humidity (%) : **32(25-Nov),35(14 and15-Feb)**
Liquid depth (cm) : **15.0**

DIELECTRIC PARAMETERS MEASUREMENT RESULTS								
Date	Frequency	Liquid Temp [deg.c]		Parameters	Target Value	Measured	Deviation [%]	Limit [%]
		Before	After					
25-Nov	2450	24.3	24.3	Relative Permittivity ϵ_r	39.2	37.3	-4.8	+/-5
				Coductivity σ [mho/m]	1.80	1.88	4.4	+/-5
14-Feb	2450	24.0	24.0	Relative Permittivity ϵ_r	39.2	37.3	-4.8	+/-5
				Coductivity σ [mho/m]	1.80	1.86	3.3	+/-5
15-Feb	2450	24.0	24.0	Relative Permittivity ϵ_r	39.2	37.4	-4.6	+/-5
				Coductivity σ [mho/m]	1.80	1.88	4.4	+/-5

7-c Muscle 2450 MHz

Type of liquid : **Muscle 2450 MHz**
Ambient temperature (deg.c.) : **25.0(25-Nov), 24.0(14-Feb), 24.5(15-Feb)**
Relative Humidity (%) : **32(25-Nov),35(14 and15-Feb)**
Liquid depth (cm) : **15.0**

DIELECTRIC PARAMETERS MEASUREMENT RESULTS								
Date	Frequency	Liquid Temp [deg.c]		Parameters	Target Value	Measured	Deviation [%]	Limit [%]
		Before	After					
25-Nov	2450	23.4	23.4	Relative Permittivity ϵ_r	52.7	50.1	-4.9	+/-5
				Coductivity σ [mho/m]	1.95	2.00	2.6	+/-5
14-Feb	2450	23.8	23.8	Relative Permittivity ϵ_r	52.7	50.1	-4.9	+/-5
				Coductivity σ [mho/m]	1.95	1.98	1.5	+/-5
15-Feb	2450	24.0	24.0	Relative Permittivity ϵ_r	52.7	50.1	-4.9	+/-5
				Coductivity σ [mho/m]	1.95	1.98	1.5	+/-5

8. System validation data

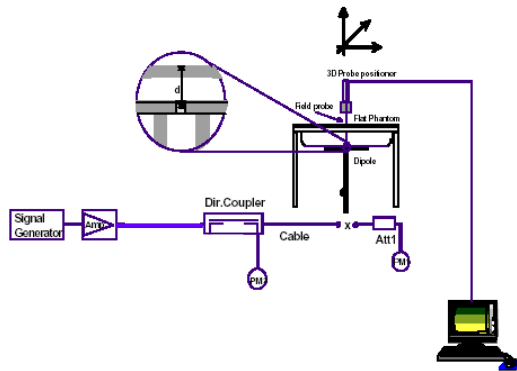
Prior to the assessment, the system validation kit was used to test whether the system was operating within its specifications of +/-10%. The validation results are in the table below. Please refer to “10. Validation measurement data”.

System validation of 2450MHz

Type of liquid : **Head 2450 MHz**
Ambient temperature (deg.c.) : **25.0(25-Nov),24.0(14-Feb), 24.5(15-Feb)**
Relative Humidity (%) : **32(25-Nov),35(14 and15-Feb)**
Liquid depth (cm) : **15.0**
Dipole : **D2450V2 SN:713**
Power : **250mW**

SYSTEM PERFORMANCE CHECK										
Date	Liquid (HEAD 2450MHz)						System dipole validation target & measured			
	Liquid Temp [deg.c.]		Relative Permittivity ϵ_r		Conductivity σ [mho/m]		SAR 1g [W/kg]		Deviation [%]	Limit [%]
	Before	After	Target	Measured	Target	Measured	Target	Measured		
25-Nov	24.3	24.3	39.2	37.3	1.80	1.88	13.1	13.6	3.8	+/-10
14-Feb	24.0	24.0	39.2	37.3	1.80	1.86	13.1	13.5	3.1	+/-10
15-Feb	24.0	24.0	39.2	37.4	1.80	1.88	13.1	13.7	4.6	+/-10

Note: Please refer to Attachment for the result representation in plot format



2450MHz System performance check setup

Test system for the system performance check setup diagram

9. Validation uncertainty

The uncertainty budget has been determined for the DASY4 measurement system according to the SPEAG documents[6][7] and is given in the following Table.

Error Description	Uncertainty value \pm %	Probability distribution	divisor	(ci) 1g	Standard Uncertainty (1g)	vi or veff
Measurement System						
Probe calibration	± 4.8	Normal	1	1	± 4.8	∞
Axial isotropy of the probe	± 4.7	Rectangular	$\sqrt{3}$	1	± 2.7	∞
Spherical isotropy of the probe	± 9.6	Rectangular	0	0	0	∞
Boundary effects	± 1.0	Rectangular	$\sqrt{3}$	1	± 0.6	∞
Probe linearity	± 4.7	Rectangular	$\sqrt{3}$	1	± 2.7	∞
Detection limit	± 1.0	Rectangular	$\sqrt{3}$	1	± 0.6	∞
Readout electronics	± 1.0	Normal	1	1	± 1.0	∞
Response time	0	Rectangular	$\sqrt{3}$	1	0	∞
Integration time	0	Rectangular	$\sqrt{3}$	1	0	∞
RF ambient Noise	± 3.0	Rectangular	$\sqrt{3}$	1	± 1.7	∞
RF ambient Reflections	± 3.0	Rectangular	$\sqrt{3}$	1	± 1.7	∞
Mech. constraints of robot	± 0.4	Rectangular	$\sqrt{3}$	1	± 0.2	∞
Probe positioning	± 2.9	Rectangular	$\sqrt{3}$	1	± 1.7	∞
Extrap. and integration	± 1.0	Rectangular	$\sqrt{3}$	1	± 0.6	∞
Dipole						
Dipole Axis to Liquid Distance	± 2.0	Rectangular	$\sqrt{3}$	1	± 1.2	∞
Input power and SAR drift meas.	± 4.7	Rectangular	$\sqrt{3}$	1	± 2.7	∞
Phantom and Setup						
Phantom uncertainty	± 4.0	Rectangular	$\sqrt{3}$	1	± 2.3	∞
Liquid conductivity (target)	± 5.0	Rectangular	$\sqrt{3}$	0.64	± 1.8	∞
Liquid conductivity (meas.)	± 5.0	Normal	1	0.64	± 3.2	∞
Liquid permittivity (target)	± 5.0	Rectangular	$\sqrt{3}$	0.6	± 1.7	∞
Liquid permittivity (meas.)	± 5.0	Normal	1	0.6	± 3.0	∞
Combined Standard Uncertainty					± 9.370	
Expanded Uncertainty (k=2)					± 18.740	

10. Validation measurement data

System Validation / Dipole 2450 MHz / Forward Conducted Power : 250mW

DUT: Dipole 2450 MHz; Type: D2450V2; Serial: SN:713

Communication System: CW; Frequency: 2450 MHz; Duty Cycle: 1:1

Medium parameters used: $f = 2450$ MHz; $\sigma = 1.88$ mho/m; $\epsilon_r = 37.3$; $\rho = 1000$ kg/m³

Phantom section: Flat Section

Measurement Standard: DASY4 (High Precision Assessment)

DASY4 Configuration:

Probe: EX3DV3 - SN3507; ConvF(8.26, 8.26, 8.26); Calibrated: 2006/05/26

Sensor-Surface: 2mm (Mechanical Surface Detection)

Electronics: DAE3 Sn518; Calibrated: 2005/08/31

Phantom: SAM 1196

Measurement SW: DASY4, V4.6 Build 23; Postprocessing SW: SEMCAD, V1.8 Build 160

Area Scan (61x61x1): Measurement grid: dx=15mm, dy=15mm

Maximum value of SAR (interpolated) = 23.2 mW/g

Zoom Scan (7x7x7)/Cube 0: Measurement grid: dx=5mm, dy=5mm, dz=5mm

Reference Value = 86.2 V/m; Power Drift = -0.011 dB

Peak SAR (extrapolated) = 28.8 W/kg

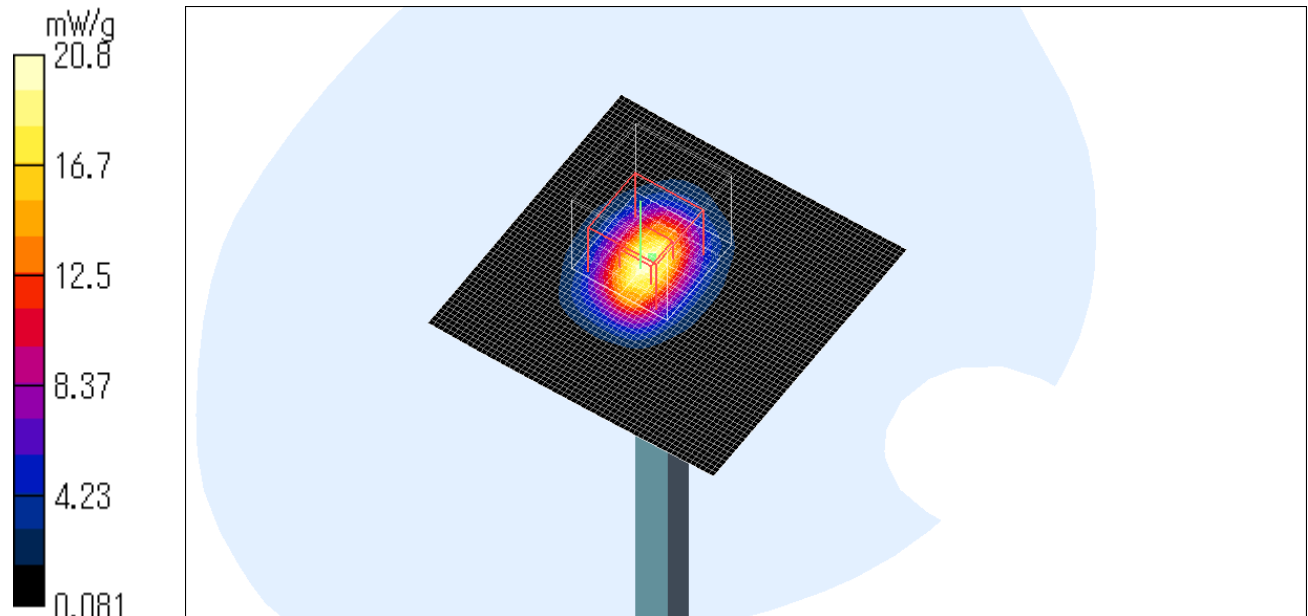
SAR(1 g) = 13.6 mW/g; SAR(10 g) = 6.24 mW/g

Maximum value of SAR (measured) = 20.8 mW/g

Test Date = 11/25/06

Ambient Temperature = 25.0 degree C.

Liquid Temperature = Before 24.3 degree C. , After 24.3 degree C.



System Validation / Dipole 2450 MHz / Forward Conducted Power : 250mW

DUT: Dipole 2450 MHz; Type: D2450V2; Serial: SN:713

Communication System: CW; Frequency: 2450 MHz; Crest factor: 1

Medium parameters used: $f = 2450$ MHz; $\sigma = 1.86$ mho/m; $\epsilon_r = 37.3$; $\rho = 1000$ kg/m³

Phantom section: Flat Section

Measurement Standard: DAS4 (High Precision Assessment)

DASY4 Configuration:

Probe: EX3DV3 - SN3507; ConvF(8.25, 8.25, 8.25); Calibrated: 2005/04/12

Sensor-Surface: 2mm (Mechanical Surface Detection)

Electronics: DAE3 Sn509; Calibrated: 2005/05/26

Phantom: SAM 1196

Measurement SW: DAS4, V4.6 Build 23; Postprocessing SW: SEMCAD, V1.8 Build 160

Area Scan (81x81x1): Measurement grid: dx=10mm, dy=10mm

Maximum value of SAR (interpolated) = 21.0 mW/g

Zoom Scan (7x7x7)/Cube 0: Measurement grid: dx=5mm, dy=5mm, dz=5mm

Reference Value = 90.9 V/m; Power Drift = -0.007 dB

Peak SAR (extrapolated) = 28.7 W/kg

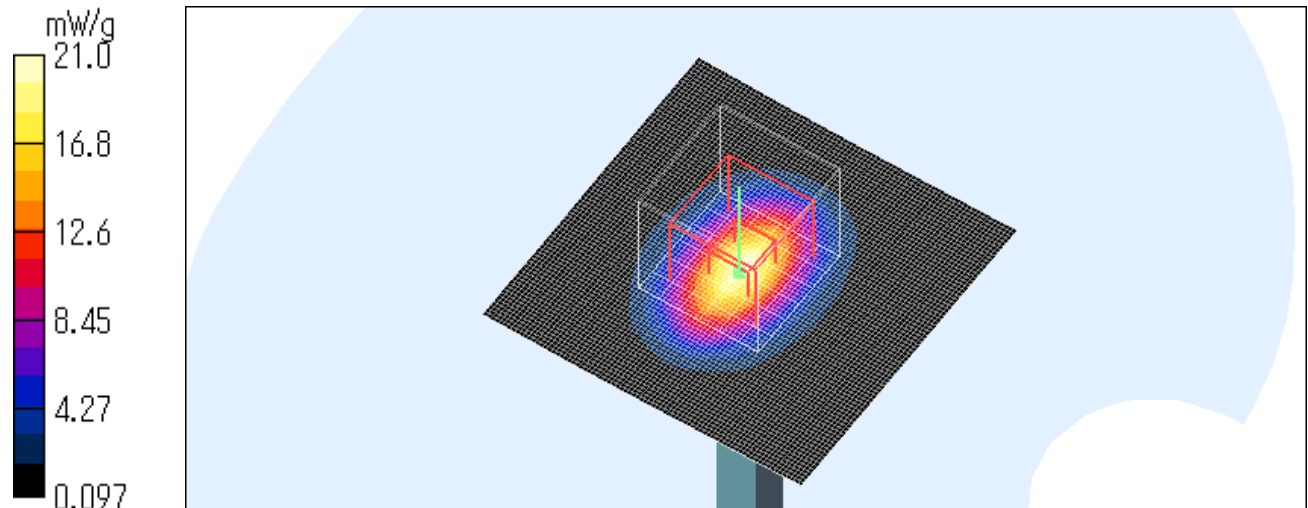
SAR(1 g) = 13.5 mW/g; SAR(10 g) = 6.12 mW/g

Maximum value of SAR (measured) = 21.0 mW/g

Test Date = 02/14/07

Ambient Temperature = 24.0 degree.C.

Liquid Temperature = Before 24.0 degree C. , After 24.0 degree C.



UL Apex Co., Ltd.

Head Office EMC Lab.

4383-326 Asama-cho, Ise-shi, Mie-ken 516-0021 JAPAN

Telephone: +81 596 24 8116

Facsimile: +81 596 24 8124

System Validation / Dipole 2450 MHz / Forward Conducted Power : 250mW

DUT: Dipole 2450 MHz; Type: D2450V2; Serial: SN:713

Communication System: CW; Frequency: 2450 MHz; Crest factor: 1
Medium parameters used: $f = 2450$ MHz; $\sigma = 1.88$ mho/m; $\epsilon_r = 37.4$; $\rho = 1000$ kg/m³
Phantom section: Flat Section
Measurement Standard: DASYS4 (High Precision Assessment)

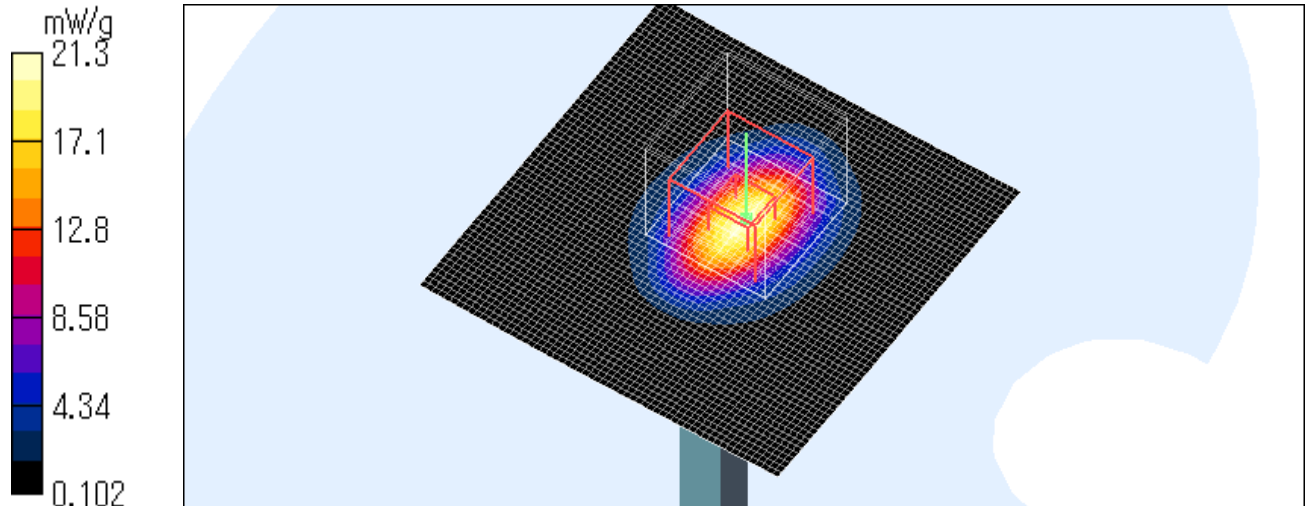
DASY4 Configuration:

Probe: EX3DV3 - SN3507; ConvF(8.26, 8.26, 8.26); Calibrated: 2006/05/26
Sensor-Surface: 2mm (Mechanical Surface Detection)
Electronics: DAE3 Sn509; Calibrated: 2006/06/15
Phantom: SAM 1196
Measurement SW: DASYS4, V4.6 Build 23; Postprocessing SW: SEMCAD, V1.8 Build 160

Area Scan (61x61x1): Measurement grid: dx=15mm, dy=15mm
Maximum value of SAR (interpolated) = 23.5 mW/g

Zoom Scan (7x7x7)/Cube 0: Measurement grid: dx=5mm, dy=5mm, dz=5mm
Reference Value = 78.1 V/m; Power Drift = 0.052 dB
Peak SAR (extrapolated) = 29.1 W/kg
SAR(1 g) = 13.7 mW/g; SAR(10 g) = 6.32 mW/g
Maximum value of SAR (measured) = 21.3 mW/g

Test Date = 02/15/07
Ambient Temperature = 24.5 degree.C.
Liquid Temperature = Before 24.0 degree C. , After 24.0 degree C.



UL Apex Co., Ltd.

Head Office EMC Lab.

4383-326 Asama-cho, Ise-shi, Mie-ken 516-0021 JAPAN

Telephone: +81 596 24 8116

Facsimile: +81 596 24 8124

11. System Validation Dipole (D2450V2,S/N: 713)

**Calibration Laboratory of
Schmid & Partner
Engineering AG**
Zeughausstrasse 43, 8004 Zurich, Switzerland



S Schweizerischer Kalibrierdienst
C Service suisse d'étalonnage
S Servizio svizzero di taratura
S Swiss Calibration Service

Accredited by the Swiss Federal Office of Metrology and Accreditation
The Swiss Accreditation Service is one of the signatories to the EA
Multilateral Agreement for the recognition of calibration certificates

Accreditation No.: **SCS 108**

Client **ULA-pex (MTT)**

Certificate No: **D2450V2-713_Sep06**

CALIBRATION CERTIFICATE

Object: **D2450V2 - SN: 713**

Calibration procedure(s): **QA CAL-05.v6
Calibration procedure for dipole validation kits**

Calibration date: **September 27, 2006**

Condition of the calibrated item: **In Tolerance**

This calibration certificate documents the traceability to national standards, which realize the physical units of measurements (SI).
The measurements and the uncertainties with confidence probability are given on the following pages and are part of the certificate.

All calibrations have been conducted in the closed laboratory facility: environment temperature (22 ± 3)°C and humidity < 70%.

Calibration Equipment used (M&TE critical for calibration)

Primary Standards	ID #	Cal Date (Calibrated by, Certificate No.)	Scheduled Calibration
Power meter EPM-442A	GB37480704	04-Oct-05 (METAS, No. 251-00516)	Oct-06
Power sensor HP 8481A	US37292783	04-Oct-05 (METAS, No. 251-00516)	Oct-06
Reference 20 dB Attenuator	SN: 5086 (20g)	10-Aug-06 (METAS, No 217-00591)	Aug-07
Reference 10 dB Attenuator	SN: 5047.2 (10r)	10-Aug-06 (METAS, No 217-00591)	Aug-07
Reference Probe ES3DV2	SN 3025	28-Oct-05 (SPEAG, No. ES3-3025_Oct05)	Oct-06
DAE4	SN 601	15-Dec-05 (SPEAG, No. DAE4-601_Dec05)	Dec-06
Secondary Standards	ID #	Check Date (in house)	Scheduled Check
Power sensor HP 8481A	MY41092317	18-Oct-02 (SPEAG, in house check Oct-05)	in house check: Oct-07
RF generator Agilent E4421B	MY41000675	11-May-05 (SPEAG, in house check Nov-05)	in house check: Nov-07
Network Analyzer HP 8753E	US37390585 S4206	18-Oct-01 (SPEAG, in house check Nov-05)	in house check: Nov-07

	Name	Function	Signature
Calibrated by:	Claudio Leubler	Laboratory Technician	
Approved by:	Katja Pokovic	Technical Manager	

Issued: September 28, 2006

This calibration certificate shall not be reproduced except in full without written approval of the laboratory.

**Calibration Laboratory of
Schmid & Partner
Engineering AG**
Zeughausstrasse 43, 8004 Zurich, Switzerland



S Schweizerischer Kalibrierdienst
C Service suisse d'étalonnage
S Servizio svizzero di taratura
S Swiss Calibration Service

Accredited by the Swiss Federal Office of Metrology and Accreditation
The Swiss Accreditation Service is one of the signatories to the EA
Multilateral Agreement for the recognition of calibration certificates

Accreditation No.: **SCS 108**

Glossary:

TSL tissue simulating liquid
ConvF sensitivity in TSL / NORM x,y,z
N/A not applicable or not measured

Calibration is Performed According to the Following Standards:

- a) IEEE Std 1528-2003, "IEEE Recommended Practice for Determining the Peak Spatial-Averaged Specific Absorption Rate (SAR) in the Human Head from Wireless Communications Devices: Measurement Techniques", December 2003
- b) CENELEC EN 50361, "Basic standard for the measurement of Specific Absorption Rate related to human exposure to electromagnetic fields from mobile phones (300 MHz - 3 GHz), July 2001
- c) Federal Communications Commission Office of Engineering & Technology (FCC OET), "Evaluating Compliance with FCC Guidelines for Human Exposure to Radiofrequency Electromagnetic Fields; Additional Information for Evaluating Compliance of Mobile and Portable Devices with FCC Limits for Human Exposure to Radiofrequency Emissions", Supplement C (Edition 01-01) to Bulletin 65

Additional Documentation:

- d) DASY4 System Handbook

Methods Applied and Interpretation of Parameters:

- *Measurement Conditions:* Further details are available from the Validation Report at the end of the certificate. All figures stated in the certificate are valid at the frequency indicated.
- *Antenna Parameters with TSL:* The dipole is mounted with the spacer to position its feed point exactly below the center marking of the flat phantom section, with the arms oriented parallel to the body axis.
- *Feed Point Impedance and Return Loss:* These parameters are measured with the dipole positioned under the liquid filled phantom. The impedance stated is transformed from the measurement at the SMA connector to the feed point. The Return Loss ensures low reflected power. No uncertainty required.
- *Electrical Delay:* One-way delay between the SMA connector and the antenna feed point. No uncertainty required.
- *SAR measured:* SAR measured at the stated antenna input power.
- *SAR normalized:* SAR as measured, normalized to an input power of 1 W at the antenna connector.
- *SAR for nominal TSL parameters:* The measured TSL parameters are used to calculate the nominal SAR result.

Measurement Conditions

DASY system configuration, as far as not given on page 1.

DASY Version	DASY4	V4.7
Extrapolation	Advanced Extrapolation	
Phantom	Modular Flat Phantom V5.0	
Distance Dipole Center - TSL	10 mm	with Spacer
Zoom Scan Resolution	dx, dy, dz = 5 mm	
Frequency	2450 MHz ± 1 MHz	

Head TSL parameters

The following parameters and calculations were applied.

	Temperature	Permittivity	Conductivity
Nominal Head TSL parameters	22.0 °C	39.2	1.80 mho/m
Measured Head TSL parameters	(22.0 ± 0.2) °C	37.8 ± 6 %	1.77 mho/m ± 6 %
Head TSL temperature during test	(22.0 ± 0.2) °C	-----	-----

SAR result with Head TSL

SAR averaged over 1 cm³ (1 g) of Head TSL	condition	
SAR measured	250 mW input power	13.7 mW / g
SAR normalized	normalized to 1W	54.8 mW / g
SAR for nominal Head TSL parameters ¹	normalized to 1W	54.2 mW / g ± 17.0 % (k=2)

SAR averaged over 10 cm³ (10 g) of Head TSL	condition	
SAR measured	250 mW input power	6.39 mW / g
SAR normalized	normalized to 1W	25.6 mW / g
SAR for nominal Head TSL parameters ¹	normalized to 1W	25.3 mW / g ± 16.5 % (k=2)

¹ Correction to nominal TSL parameters according to d), chapter "SAR Sensitivities"

Body TSL parameters

The following parameters and calculations were applied.

	Temperature	Permittivity	Conductivity
Nominal Body TSL parameters	22.0 °C	52.7	1.95 mho/m
Measured Body TSL parameters	(22.0 ± 0.2) °C	52.1 ± 6 %	1.97 mho/m ± 6 %
Body TSL temperature during test	(21.7 ± 0.2) °C	----	----

SAR result with Body TSL

SAR averaged over 1 cm ³ (1 g) of Body TSL	Condition	
SAR measured	250 mW input power	13.7 mW / g
SAR normalized	normalized to 1W	54.8 mW / g
SAR for nominal Body TSL parameters ²	normalized to 1W	54.1 mW / g ± 17.0 % (k=2)

SAR averaged over 10 cm ³ (10 g) of Body TSL	Condition	
SAR measured	250 mW input power	6.34 mW / g
SAR normalized	normalized to 1W	25.4 mW / g
SAR for nominal Body TSL parameters ²	normalized to 1W	25.2 mW / g ± 16.5 % (k=2)

² Correction to nominal TSL parameters according to d), chapter "SAR Sensitivities"

Appendix

Antenna Parameters with Head TSL

Impedance, transformed to feed point	51.2 Ω + 3.3 j Ω
Return Loss	- 29.3 dB

Antenna Parameters with Body TSL

Impedance, transformed to feed point	47.7 Ω + 4.0 j Ω
Return Loss	- 26.5 dB

General Antenna Parameters and Design

Electrical Delay (one direction)	1.160 ns
----------------------------------	----------

After long term use with 100W radiated power, only a slight warming of the dipole near the feedpoint can be measured.

The dipole is made of standard semirigid coaxial cable. The center conductor of the feeding line is directly connected to the second arm of the dipole. The antenna is therefore short-circuited for DC-signals.

No excessive force must be applied to the dipole arms, because they might bend or the soldered connections near the feedpoint may be damaged.

Additional EUT Data

Manufactured by	SPEAG
Manufactured on	July 5, 2002

DASY4 Validation Report for Head TSL

Date/Time: 27.09.2006 11:36:11

Test Laboratory: SPEAG, Zurich, Switzerland

DUT: Dipole 2450 MHz; Type: D2450V2; Serial: D2450V2 – SN713

Communication System: CW-2450; Frequency: 2450 MHz; Duty Cycle: 1:1

Medium: HSL U10 BB

Medium parameters used: $f = 2450$ MHz; $\sigma = 1.77$ mho/m; $\epsilon_r = 37.8$; $\rho = 1000$ kg/m³

Phantom section: Flat Section

Measurement Standard: DASY4 (High Precision Assessment)

DASY4 Configuration:

- Probe: ES3DV2 - SN3025 (HF); ConvF(4.4, 4.4, 4.4); Calibrated: 28.10.2005
- Sensor-Surface: 4mm (Mechanical Surface Detection)
- Electronics: DAE4 Sn601; Calibrated: 15.12.2005
- Phantom: Flat Phantom 5.0 (front); Type: QD000P50AA; ;
- Measurement SW: DASY4, V4.7 Build 44; Postprocessing SW: SEMCAD, V1.8 Build 171

Pin = 250 mW; d = 10 mm/Zoom Scan (7x7x7)/Cube 0:

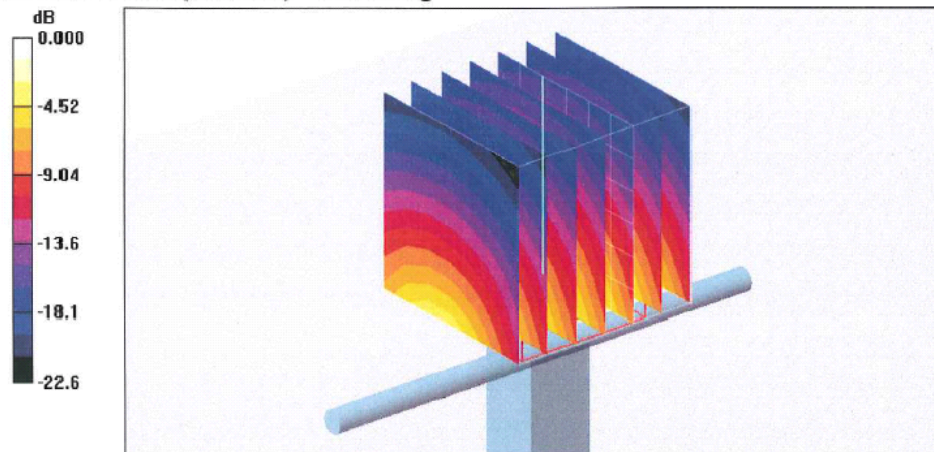
Measurement grid: dx=5mm, dy=5mm, dz=5mm

Reference Value = 91.5 V/m; Power Drift = 0.078 dB

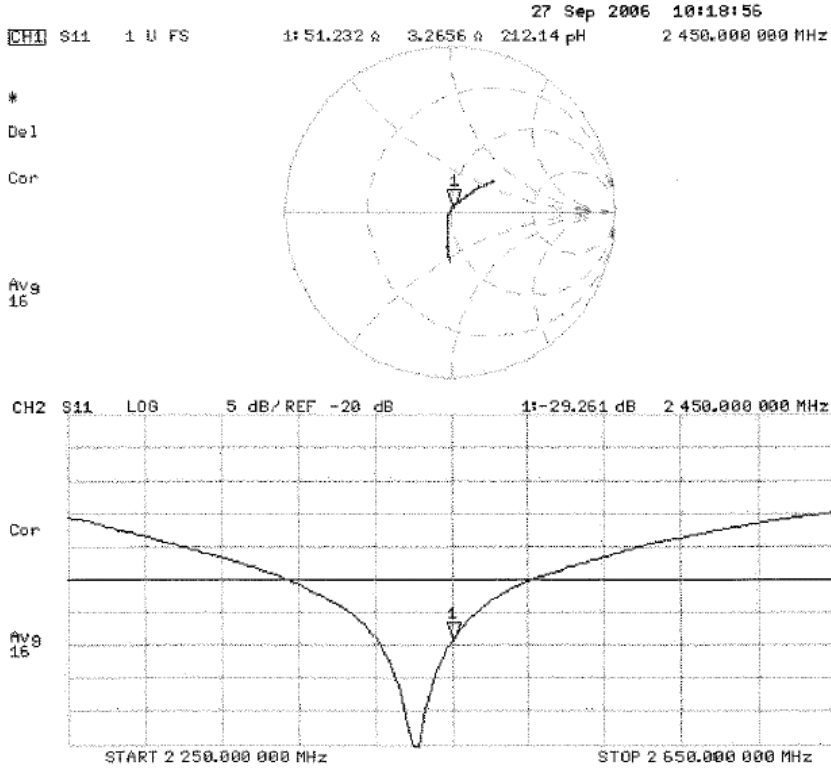
Peak SAR (extrapolated) = 28.5 W/kg

SAR(1 g) = 13.7 mW/g; SAR(10 g) = 6.39 mW/g

Maximum value of SAR (measured) = 15.0 mW/g



Impedance Measurement Plot for Head TSL



DASY4 Validation Report for Body TSL

Date/Time: 27.09.2006 14:23:31

Test Laboratory: SPEAG, Zurich, Switzerland

DUT: Dipole 2450 MHz; Type: D2450V2; Serial: D2450V2 – SN713

Communication System: CW-2450; Frequency: 2450 MHz; Duty Cycle: 1:1

Medium: MSL U10 BB;

Medium parameters used: $f = 2450$ MHz; $\sigma = 1.97$ mho/m; $\epsilon_r = 52.2$; $\rho = 1000$ kg/m³

Phantom section: Flat Section

Measurement Standard: DASY4 (High Precision Assessment)

DASY4 Configuration:

- Probe: ES3DV2 - SN3025 (HF); ConvF(4.06, 4.06, 4.06); Calibrated: 28.10.2005
- Sensor-Surface: 4mm (Mechanical Surface Detection)
- Electronics: DAE4 Sn601; Calibrated: 15.12.2005
- Phantom: Flat Phantom 5.0 (back); Type: QD000P50AA; ;
- Measurement SW: DASY4, V4.7 Build 44; Postprocessing SW: SEMCAD, V1.8 Build 171

Pin = 250 mW; d = 10 mm/Zoom Scan (7x7x7)/Cube 0:

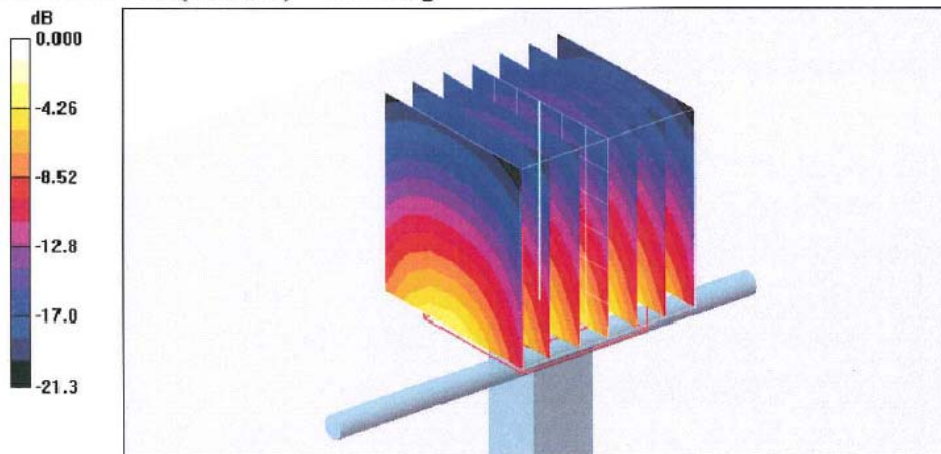
Measurement grid: dx=5mm, dy=5mm, dz=5mm

Reference Value = 89.4 V/m; Power Drift = -0.054 dB

Peak SAR (extrapolated) = 28.5 W/kg

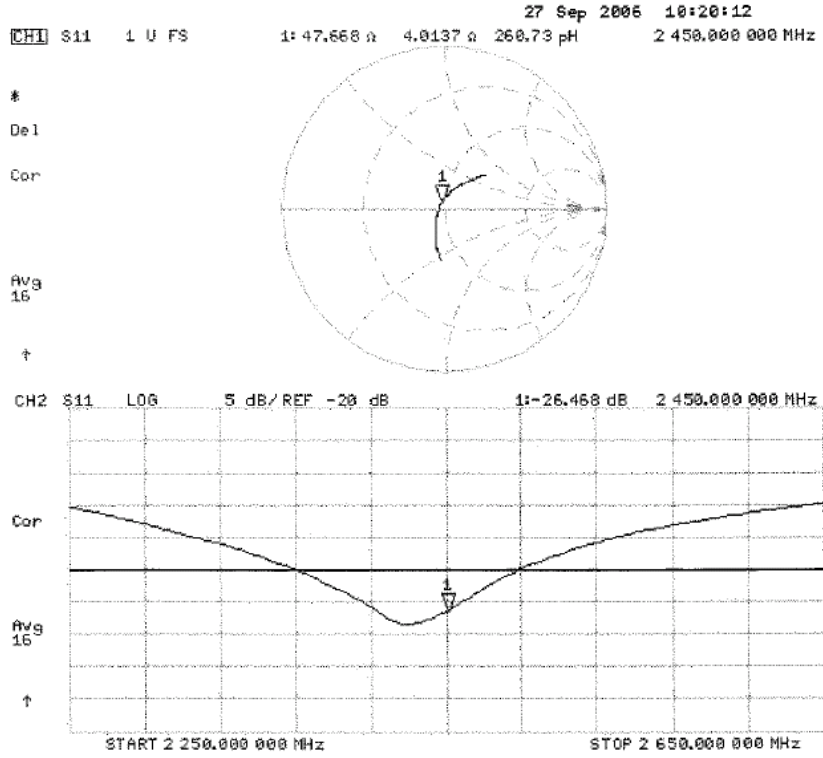
SAR(1 g) = 13.7 mW/g; SAR(10 g) = 6.34 mW/g

Maximum value of SAR (measured) = 15.4 mW/g



0 dB = 15.4mW/g

Impedance Measurement Plot for Body TSL



12. Dosimetric E-Field Probe Calibration (EX3DV3,S/N: 3507)

**Calibration Laboratory of
 Schmid & Partner
 Engineering AG**
 Zeughausstrasse 43, 8004 Zurich, Switzerland



S Schweizerischer Kalibrierdienst
S Service suisse d'étalonnage
C Servizio svizzero di taratura
S Swiss Calibration Service

Accredited by the Swiss Federal Office of Metrology and Accreditation
 The Swiss Accreditation Service is one of the signatories to the EA
 Multilateral Agreement for the recognition of calibration certificates

Accreditation No.: **SCS 108**

Client **UL A-pex (MTT)**

Calibration No. **EX3-3507_May06**

CALIBRATION CERTIFICATE			
Object	EX3DV3 - SN: 3507		
Calibration procedure(s)	QA CAL-01.v5, QA CAL-12.v4 and QA CAL-11.v3 Calibration procedure for dosimetric E-field probes		
Calibration date:	May 26, 2006		
Condition of the calibrated item	In Tolerance		
This calibration certificate documents the traceability to national standards, which realize the physical units of measurements (SI). The measurements and the uncertainties with confidence probability are given on the following pages and are part of the certificate.			
All calibrations have been conducted in the closed laboratory facility: environment temperature (22 ± 3)°C and humidity < 70%.			
Calibration Equipment used (M&TE critical for calibration)			
Primary Standards	ID #	Cal Date (Calibrated by, Certificate No.)	Scheduled Calibration
Power meter E4419B	GB41293874	5-Apr-06 (METAS, No. 251-00557)	Apr-07
Power sensor E4412A	MY41495277	5-Apr-06 (METAS, No. 251-00557)	Apr-07
Power sensor E4412A	MY41498087	5-Apr-06 (METAS, No. 251-00557)	Apr-07
Reference 3 dB Attenuator	SN: S5054 (3c)	11-Aug-05 (METAS, No. 251-00499)	Aug-06
Reference 20 dB Attenuator	SN: S5086 (20b)	4-Apr-06 (METAS, No. 251-00558)	Apr-07
Reference 30 dB Attenuator	SN: S5129 (30b)	11-Aug-05 (METAS, No. 251-00500)	Aug-06
Reference Probe ES3DV2	SN: 3013	2-Jan-06 (SPEAG, No. ES3-3013_Jan06)	Jan-07
DAE4	SN: 654	2-Feb-06 (SPEAG, No. DAE4-654_Feb06)	Feb-07
Secondary Standards	ID #	Check Date (in house)	Scheduled Check
RF generator HP 8648C	US3842U01700	4-Aug-99 (SPEAG, in house check Nov-05)	In house check: Nov-07
Network Analyzer HP 8753E	US37390585	18-Oct-01 (SPEAG, in house check Nov-05)	In house check: Nov-06
Calibrated by:	Name Kaja Petrovic	Function Technical Manager	Signature
Approved by:	Name Fin Bonhoff	Function R&D Director	Signature
			Issued: May 26, 2006
This calibration certificate shall not be reproduced except in full without written approval of the laboratory.			

**Calibration Laboratory of
Schmid & Partner
Engineering AG**
Zeughausstrasse 43, 8004 Zurich, Switzerland



S Schweizerischer Kalibrierdienst
C Service suisse d'étalonnage
S Servizio svizzero di taratura
S Swiss Calibration Service

Accredited by the Swiss Federal Office of Metrology and Accreditation
The Swiss Accreditation Service is one of the signatories to the EA
Multilateral Agreement for the recognition of calibration certificates

Accreditation No.: **SCS 108**

Glossary:

TSL	tissue simulating liquid
NORM _{x,y,z}	sensitivity in free space
ConF	sensitivity in TSL / NORM _{x,y,z}
DCP	diode compression point
Polarization φ	φ rotation around probe axis
Polarization ϑ	ϑ rotation around an axis that is in the plane normal to probe axis (at measurement center), i.e., $\vartheta = 0$ is normal to probe axis

Calibration is Performed According to the Following Standards:

- IEEE Std 1528-2003, "IEEE Recommended Practice for Determining the Peak Spatial-Averaged Specific Absorption Rate (SAR) in the Human Head from Wireless Communications Devices: Measurement Techniques", December 2003
- CENELEC EN 50361, "Basic standard for the measurement of Specific Absorption Rate related to human exposure to electromagnetic fields from mobile phones (300 MHz - 3 GHz), July 2001

Methods Applied and Interpretation of Parameters:

- NORM_{x,y,z}**: Assessed for E-field polarization $\vartheta = 0$ ($f \leq 900$ MHz in TEM-cell; $f > 1800$ MHz: R22 waveguide). NORM_{x,y,z} are only intermediate values, i.e., the uncertainties of NORM_{x,y,z} does not effect the E²-field uncertainty inside TSL (see below *ConvF*).
- NORM(f)_{x,y,z} = NORM_{x,y,z} * frequency_response** (see Frequency Response Chart). This linearization is implemented in DASY4 software versions later than 4.2. The uncertainty of the frequency response is included in the stated uncertainty of *ConvF*.
- DCP_{x,y,z}**: DCP are numerical linearization parameters assessed based on the data of power sweep (no uncertainty required). DCP does not depend on frequency nor media.
- ConvF and Boundary Effect Parameters**: Assessed in flat phantom using E-field (or Temperature Transfer Standard for $f \leq 800$ MHz) and inside waveguide using analytical field distributions based on power measurements for $f > 800$ MHz. The same setups are used for assessment of the parameters applied for boundary compensation (alpha, depth) of which typical uncertainty values are given. These parameters are used in DASY4 software to improve probe accuracy close to the boundary. The sensitivity in TSL corresponds to NORM_{x,y,z} * *ConvF* whereby the uncertainty corresponds to that given for *ConvF*. A frequency dependent *ConvF* is used in DASY version 4.4 and higher which allows extending the validity from ± 50 MHz to ± 100 MHz.
- Spherical isotropy (3D deviation from isotropy)**: in a field of low gradients realized using a flat phantom exposed by a patch antenna.
- Sensor Offset**: The sensor offset corresponds to the offset of virtual measurement center from the probe tip (on probe axis). No tolerance required.

EX3DV3 SN:3507

May 26, 2006

Probe EX3DV3

SN:3507

Manufactured: December 15, 2003
Last calibrated: April 12, 2005
Recalibrated: May 26, 2006

Calibrated for DASY Systems

(Note: non-compatible with DASY2 system!)

EX3DV3 SN:3507

May 26, 2006

DASY - Parameters of Probe: EX3DV3 SN:3507

Sensitivity in Free Space^A

NormX	0.695 ± 10.1%	$\mu V/(V/m)^2$	DCP X	96 mV
NormY	0.745 ± 10.1%	$\mu V/(V/m)^2$	DCP Y	96 mV
NormZ	0.727 ± 10.1%	$\mu V/(V/m)^2$	DCP Z	96 mV

Diode Compression^B

Sensitivity in Tissue Simulating Liquid (Conversion Factors)

Please see Page 8.

Boundary Effect

TSL 900 MHz Typical SAR gradient: 5 % per mm

		2.0 mm	3.0 mm
Sensor Center to Phantom Surface Distance			
SAR _{be} [%]	Without Correction Algorithm	3.1	1.3
SAR _{be} [%]	With Correction Algorithm	0.0	0.1

TSL 1810 MHz Typical SAR gradient: 10 % per mm

		2.0 mm	3.0 mm
Sensor Center to Phantom Surface Distance			
SAR _{be} [%]	Without Correction Algorithm	1.6	0.7
SAR _{be} [%]	With Correction Algorithm	0.3	0.2

Sensor Offset

Probe Tip to Sensor Center 1.0 mm

The reported uncertainty of measurement is stated as the standard uncertainty of measurement multiplied by the coverage factor k=2, which for a normal distribution corresponds to a coverage probability of approximately 95%.

^A The uncertainties of NormX,Y,Z do not affect the E²-field uncertainty inside TSL (see Page 8).

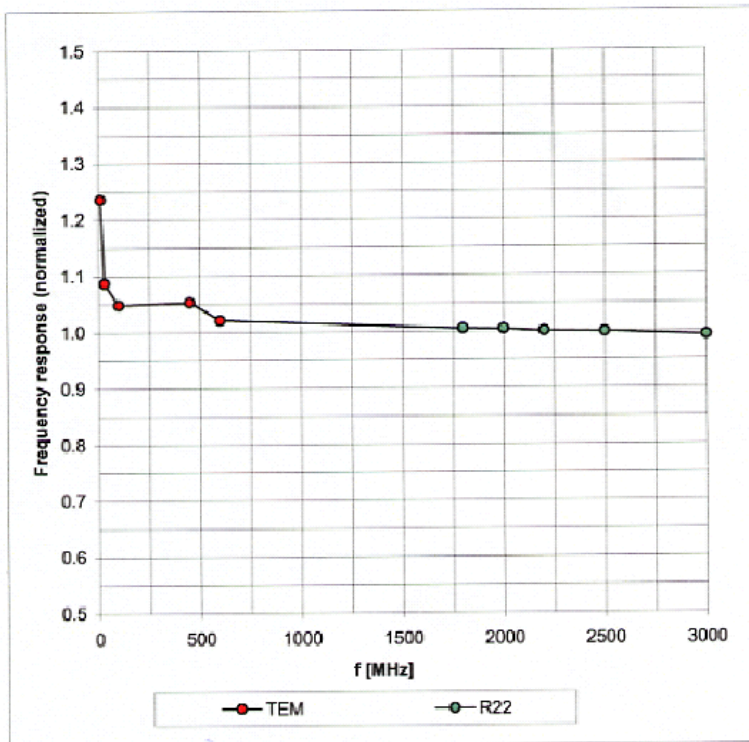
^B Numerical linearization parameter: uncertainty not required.

EX3DV3 SN:3507

May 26, 2006

Frequency Response of E-Field

(TEM-Cell:ifi110 EXX, Waveguide: R22)

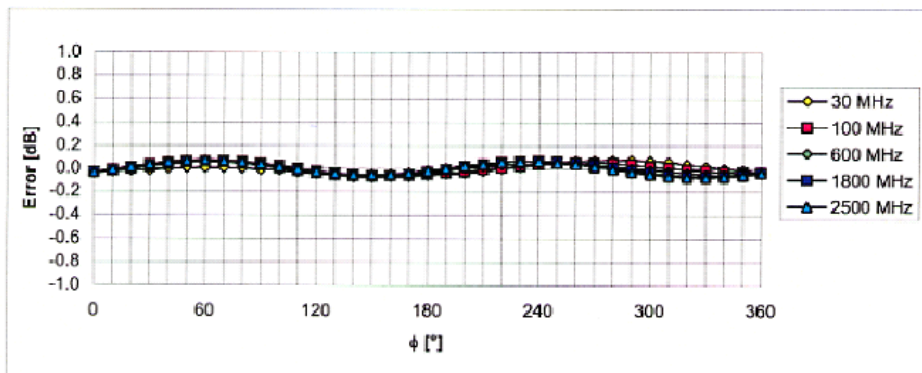
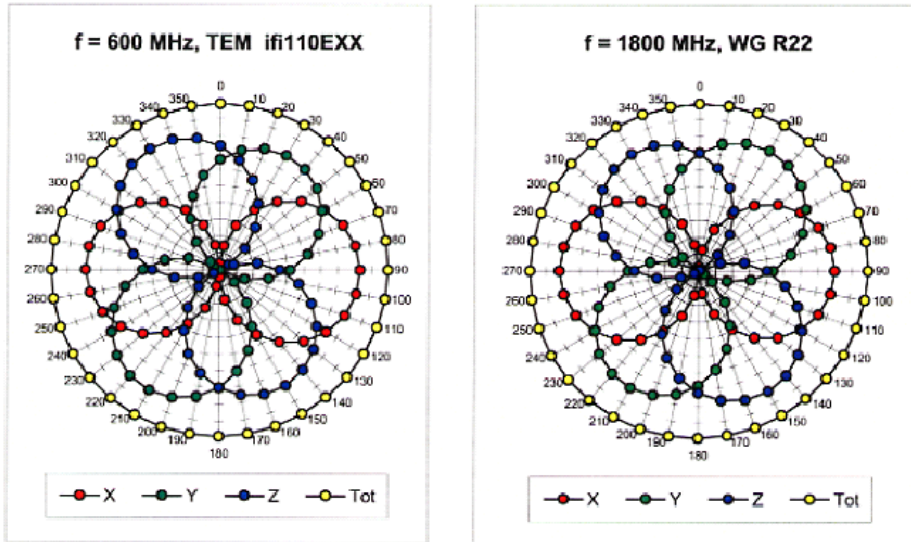


Uncertainty of Frequency Response of E-field: $\pm 6.3\%$ ($k=2$)

EX3DV3 SN:3507

May 26, 2006

Receiving Pattern (ϕ), $\theta = 0^\circ$

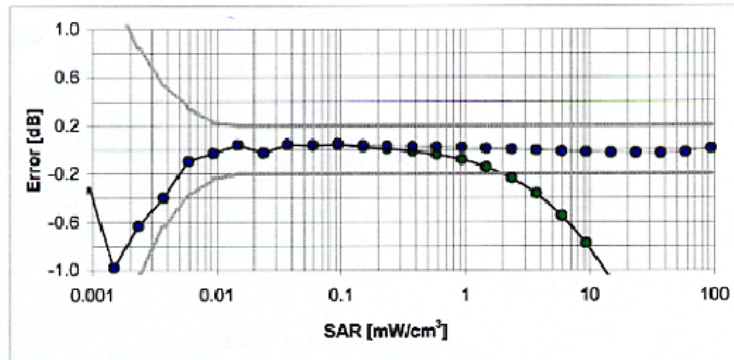
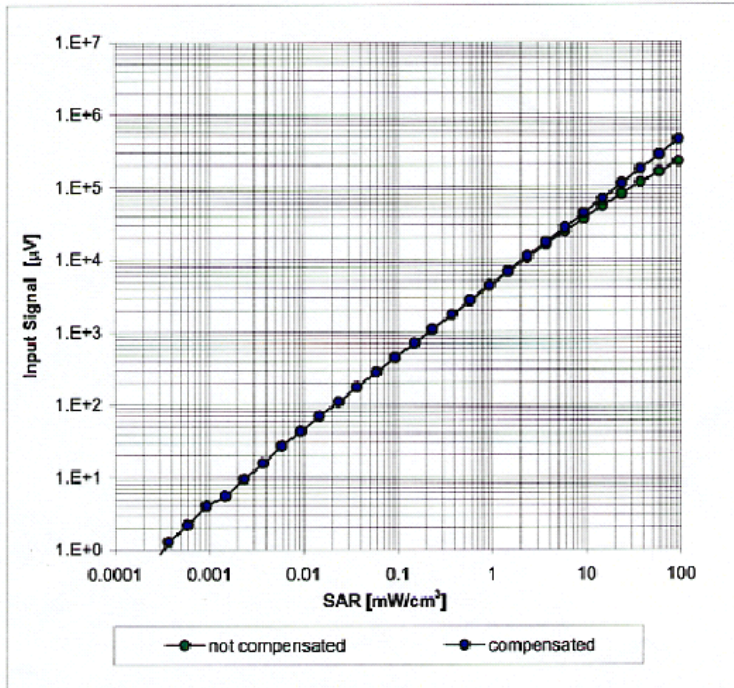


Uncertainty of Axial Isotropy Assessment: $\pm 0.5\%$ ($k=2$)

EX3DV3 SN:3507

May 26, 200

Dynamic Range $f(\text{SAR}_{\text{head}})$ (Waveguide R22, $f = 1800 \text{ MHz}$)

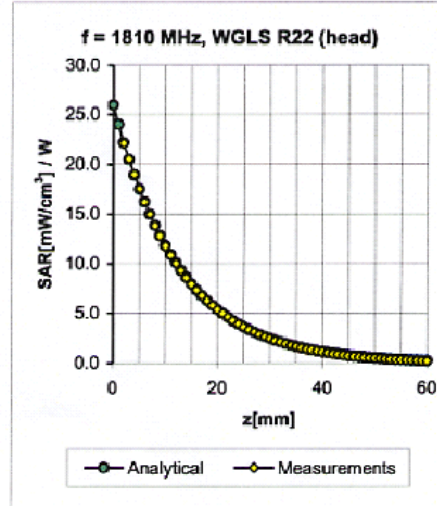
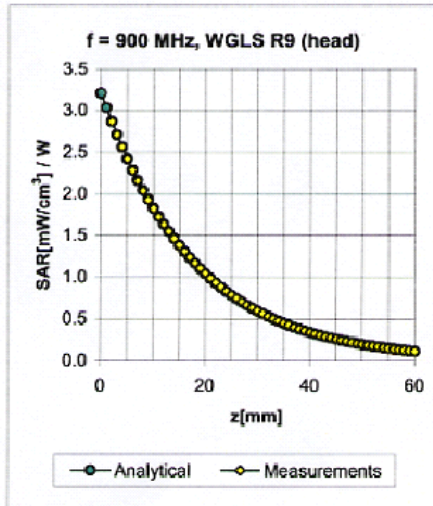


Uncertainty of Linearity Assessment: $\pm 0.6\%$ ($k=2$)

EX3DV3 SN:3507

May 26, 2006

Conversion Factor Assessment



f [MHz]	Validity [MHz] ^c	TSL	Permittivity	Conductivity	Alpha	Depth	ConvF Uncertainty
450	± 50 / ± 100	Head	43.5 ± 5%	0.87 ± 5%	0.37	0.74	10.80 ± 13.3% (k=2)
900	± 50 / ± 100	Head	41.5 ± 5%	0.97 ± 5%	0.21	1.03	10.62 ± 11.0% (k=2)
1810	± 50 / ± 100	Head	40.0 ± 5%	1.40 ± 5%	0.45	0.70	9.28 ± 11.0% (k=2)
2450	± 50 / ± 100	Head	39.2 ± 5%	1.80 ± 5%	0.51	0.74	8.26 ± 11.8% (k=2)
5200	± 50 / ± 100	Head	36.0 ± 5%	4.66 ± 5%	0.30	1.80	5.31 ± 13.1% (k=2)
5500	± 50 / ± 100	Head	35.6 ± 5%	4.96 ± 5%	0.30	1.80	4.95 ± 13.1% (k=2)
5800	± 50 / ± 100	Head	35.3 ± 5%	5.27 ± 5%	0.30	1.80	4.82 ± 13.1% (k=2)
450	± 50 / ± 100	Body	56.7 ± 5%	0.94 ± 5%	0.47	0.50	11.90 ± 13.3% (k=2)
900	± 50 / ± 100	Body	55.0 ± 5%	1.05 ± 5%	0.66	0.62	10.46 ± 11.0% (k=2)
1810	± 50 / ± 100	Body	53.3 ± 5%	1.52 ± 5%	0.35	0.95	8.83 ± 11.0% (k=2)
2450	± 50 / ± 100	Body	52.7 ± 5%	1.95 ± 5%	0.51	0.74	8.24 ± 11.8% (k=2)
5200	± 50 / ± 100	Body	49.0 ± 5%	5.30 ± 5%	0.28	1.90	4.91 ± 13.1% (k=2)
5500	± 50 / ± 100	Body	48.6 ± 5%	5.65 ± 5%	0.28	1.90	4.61 ± 13.1% (k=2)
5800	± 50 / ± 100	Body	48.2 ± 5%	6.00 ± 5%	0.25	1.90	4.77 ± 13.1% (k=2)

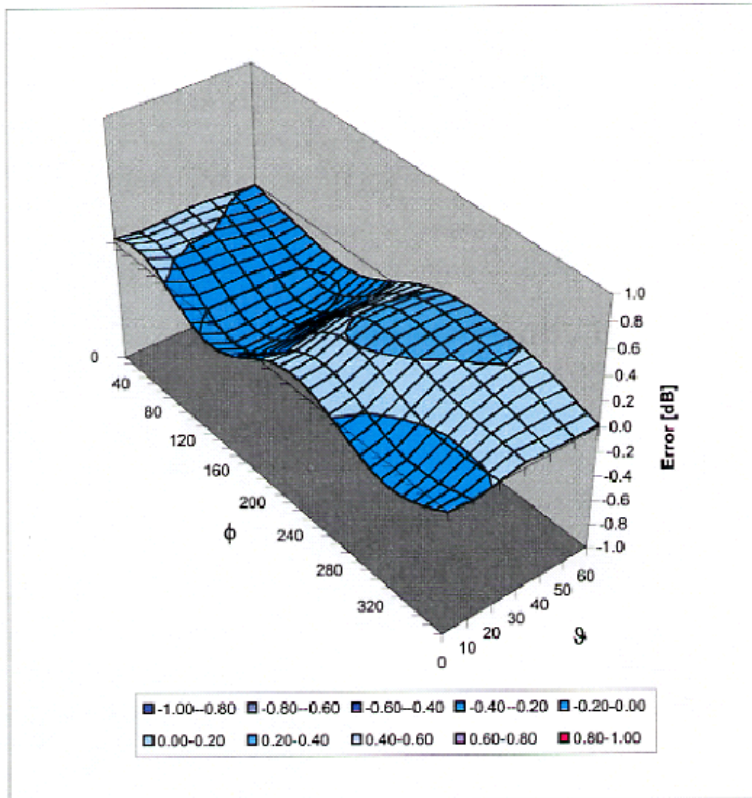
^c The validity of ± 100 MHz only applies for DASYS v4.4 and higher (see Page 2). The uncertainty is the RSS of the ConvF uncertainty at calibration frequency and the uncertainty for the indicated frequency band.

EX3DV3 SN:3507

May 26, 2006

Deviation from Isotropy in HSL

Error (ϕ , θ), $f = 900$ MHz



Uncertainty of Spherical Isotropy Assessment: $\pm 2.6\%$ ($k=2$)

13. References

- [1]ANSI, ANSI/IEEE C95.1-1992: IEEE Standard for Safety Levels with Respect to Human Exposure to Radio Frequency Electromagnetic Fields, 3 kHz to 300 GHz, The Institute of Electrical and Electronics Engineers, Inc., New York, NY 10017, 1992.
- [2] Katja Pokovic, Thomas Schmid, and Niels Kuster, "Robust setup for precise calibration of E-field probes in tissue simulating liquids at mobile communications frequencies", in ICECOM '97, Dubrovnik, October 15-17, 1997, pp. 120-124.
- [3] Katja Pokovic, Thomas Schmid, and Niels Kuster, "E-field probe with improved isotropy in brain simulating liquids", in Proceedings of the ELMAR, Zadar, Croatia, 23-25 June, 1996, pp.172-175.
- [4] W. Gander, Computermathematik, Birkhaeuser, Basel, 1992.
- [5] W. H. Press, S. A. Teukolsky, W. T. Vetterling, and B. P. Flannery, Numerical Recipes in C, The Art of Scientific Computing, Second Edition, Cambridge University Press, 1992.
- [6]SPEAG uncertainty document for DASY 4 System from SPEAG (Shimid & Partner Engineering AG).
- [7]SPEAG uncertainty document for "the 5-6GHz Extension" from SPEAG (Shimid & Partner Engineering AG).