

10607-AAB	IEEE 802.11ac WiFi (20MHz, MCS0, 90pc duty cycle)	X	4.62	66.38	16.55	0.46	130.0	± 9.6 %
		Y	4.36	66.29	16.39		130.0	
		Z	4.32	65.96	15.89		130.0	
10608-AAB	IEEE 802.11ac WiFi (20MHz, MCS1, 90pc duty cycle)	X	4.79	66.77	16.71	0.46	130.0	± 9.6 %
		Y	4.48	66.59	16.52		130.0	
		Z	4.44	66.24	16.02		130.0	
10609-AAB	IEEE 802.11ac WiFi (20MHz, MCS2, 90pc duty cycle)	X	4.69	66.62	16.55	0.46	130.0	± 9.6 %
		Y	4.38	66.42	16.33		130.0	
		Z	4.34	66.07	15.83		130.0	
10610-AAB	IEEE 802.11ac WiFi (20MHz, MCS3, 90pc duty cycle)	X	4.74	66.78	16.71	0.46	130.0	± 9.6 %
		Y	4.43	66.62	16.53		130.0	
		Z	4.39	66.25	16.01		130.0	
10611-AAB	IEEE 802.11ac WiFi (20MHz, MCS4, 90pc duty cycle)	X	4.65	66.59	16.56	0.46	130.0	± 9.6 %
		Y	4.34	66.38	16.35		130.0	
		Z	4.30	66.02	15.84		130.0	
10612-AAB	IEEE 802.11ac WiFi (20MHz, MCS5, 90pc duty cycle)	X	4.66	66.77	16.63	0.46	130.0	± 9.6 %
		Y	4.32	66.49	16.38		130.0	
		Z	4.28	66.10	15.86		130.0	
10613-AAB	IEEE 802.11ac WiFi (20MHz, MCS6, 90pc duty cycle)	X	4.65	66.61	16.49	0.46	130.0	± 9.6 %
		Y	4.31	66.27	16.20		130.0	
		Z	4.27	65.92	15.70		130.0	
10614-AAB	IEEE 802.11ac WiFi (20MHz, MCS7, 90pc duty cycle)	X	4.61	66.80	16.72	0.46	130.0	± 9.6 %
		Y	4.30	66.57	16.50		130.0	
		Z	4.26	66.18	15.97		130.0	
10615-AAB	IEEE 802.11ac WiFi (20MHz, MCS8, 90pc duty cycle)	X	4.65	66.44	16.35	0.46	130.0	± 9.6 %
		Y	4.33	66.19	16.09		130.0	
		Z	4.29	65.85	15.60		130.0	
10616-AAB	IEEE 802.11ac WiFi (40MHz, MCS0, 90pc duty cycle)	X	5.27	66.73	16.68	0.46	130.0	± 9.6 %
		Y	5.01	66.49	16.56		130.0	
		Z	4.96	66.22	16.10		130.0	
10617-AAB	IEEE 802.11ac WiFi (40MHz, MCS1, 90pc duty cycle)	X	5.35	66.96	16.78	0.46	130.0	± 9.6 %
		Y	5.05	66.62	16.60		130.0	
		Z	4.98	66.29	16.11		130.0	
10618-AAB	IEEE 802.11ac WiFi (40MHz, MCS2, 90pc duty cycle)	X	5.23	66.97	16.80	0.46	130.0	± 9.6 %
		Y	4.95	66.64	16.63		130.0	
		Z	4.90	66.35	16.15		130.0	
10619-AAB	IEEE 802.11ac WiFi (40MHz, MCS3, 90pc duty cycle)	X	5.24	66.75	16.62	0.46	130.0	± 9.6 %
		Y	5.02	66.64	16.56		130.0	
		Z	4.94	66.26	16.04		130.0	
10620-AAB	IEEE 802.11ac WiFi (40MHz, MCS4, 90pc duty cycle)	X	5.32	66.76	16.68	0.46	130.0	± 9.6 %
		Y	5.04	66.47	16.52		130.0	
		Z	4.99	66.18	16.05		130.0	
10621-AAB	IEEE 802.11ac WiFi (40MHz, MCS5, 90pc duty cycle)	X	5.33	66.89	16.85	0.46	130.0	± 9.6 %
		Y	5.05	66.58	16.71		130.0	
		Z	5.01	66.34	16.25		130.0	
10622-AAB	IEEE 802.11ac WiFi (40MHz, MCS6, 90pc duty cycle)	X	5.35	67.10	16.96	0.46	130.0	± 9.6 %
		Y	5.04	66.69	16.76		130.0	
		Z	4.99	66.41	16.29		130.0	

10623-AAB	IEEE 802.11ac WiFi (40MHz, MCS7, 90pc duty cycle)	X	5.22	66.58	16.57	0.46	130.0	± 9.6 %
		Y	4.94	66.25	16.38		130.0	
		Z	4.90	66.00	15.94		130.0	
10624-AAB	IEEE 802.11ac WiFi (40MHz, MCS8, 90pc duty cycle)	X	5.41	66.77	16.72	0.46	130.0	± 9.6 %
		Y	5.13	66.51	16.58		130.0	
		Z	5.08	66.25	16.13		130.0	
10625-AAB	IEEE 802.11ac WiFi (40MHz, MCS9, 90pc duty cycle)	X	5.67	67.47	17.13	0.46	130.0	± 9.6 %
		Y	5.24	66.76	16.78		130.0	
		Z	5.18	66.46	16.30		130.0	
10626-AAB	IEEE 802.11ac WiFi (80MHz, MCS0, 90pc duty cycle)	X	5.58	66.75	16.62	0.46	130.0	± 9.6 %
		Y	5.35	66.42	16.47		130.0	
		Z	5.31	66.24	16.06		130.0	
10627-AAB	IEEE 802.11ac WiFi (80MHz, MCS1, 90pc duty cycle)	X	5.83	67.40	16.91	0.46	130.0	± 9.6 %
		Y	5.63	67.24	16.86		130.0	
		Z	5.52	66.81	16.33		130.0	
10628-AAB	IEEE 802.11ac WiFi (80MHz, MCS2, 90pc duty cycle)	X	5.60	66.81	16.55	0.46	130.0	± 9.6 %
		Y	5.34	66.39	16.35		130.0	
		Z	5.30	66.19	15.94		130.0	
10629-AAB	IEEE 802.11ac WiFi (80MHz, MCS3, 90pc duty cycle)	X	5.68	66.90	16.59	0.46	130.0	± 9.6 %
		Y	5.54	66.91	16.62		130.0	
		Z	5.42	66.48	16.08		130.0	
10630-AAB	IEEE 802.11ac WiFi (80MHz, MCS4, 90pc duty cycle)	X	6.08	68.33	17.31	0.46	130.0	± 9.6 %
		Y	5.70	67.61	16.97		130.0	
		Z	5.55	67.05	16.38		130.0	
10631-AAB	IEEE 802.11ac WiFi (80MHz, MCS5, 90pc duty cycle)	X	5.97	68.08	17.36	0.46	130.0	± 9.6 %
		Y	5.66	67.59	17.16		130.0	
		Z	5.57	67.23	16.66		130.0	
10632-AAB	IEEE 802.11ac WiFi (80MHz, MCS6, 90pc duty cycle)	X	5.80	67.45	17.07	0.46	130.0	± 9.6 %
		Y	5.69	67.64	17.20		130.0	
		Z	5.55	67.10	16.61		130.0	
10633-AAB	IEEE 802.11ac WiFi (80MHz, MCS7, 90pc duty cycle)	X	5.66	67.00	16.67	0.46	130.0	± 9.6 %
		Y	5.35	66.42	16.41		130.0	
		Z	5.31	66.26	16.01		130.0	
10634-AAB	IEEE 802.11ac WiFi (80MHz, MCS8, 90pc duty cycle)	X	5.64	67.00	16.73	0.46	130.0	± 9.6 %
		Y	5.39	66.68	16.59		130.0	
		Z	5.35	66.50	16.18		130.0	
10635-AAB	IEEE 802.11ac WiFi (80MHz, MCS9, 90pc duty cycle)	X	5.52	66.33	16.14	0.46	130.0	± 9.6 %
		Y	5.23	65.84	15.88		130.0	
		Z	5.20	65.70	15.50		130.0	
10636-AAC	IEEE 802.11ac WiFi (160MHz, MCS0, 90pc duty cycle)	X	6.01	67.10	16.69	0.46	130.0	± 9.6 %
		Y	5.81	66.78	16.56		130.0	
		Z	5.76	66.60	16.16		130.0	
10637-AAC	IEEE 802.11ac WiFi (160MHz, MCS1, 90pc duty cycle)	X	6.16	67.51	16.88	0.46	130.0	± 9.6 %
		Y	5.94	67.13	16.72		130.0	
		Z	5.85	66.83	16.27		130.0	
10638-AAC	IEEE 802.11ac WiFi (160MHz, MCS2, 90pc duty cycle)	X	6.16	67.47	16.84	0.46	130.0	± 9.6 %
		Y	5.99	67.25	16.76		130.0	
		Z	5.90	66.99	16.32		130.0	

10639-AAC	IEEE 802.11ac WiFi (160MHz, MCS3, 90pc duty cycle)	X	6.13	67.38	16.83	0.46	130.0	± 9.6 %
		Y	5.90	67.00	16.68		130.0	
		Z	5.84	66.81	16.27		130.0	
10640-AAC	IEEE 802.11ac WiFi (160MHz, MCS4, 90pc duty cycle)	X	6.13	67.41	16.79	0.46	130.0	± 9.6 %
		Y	5.83	66.79	16.51		130.0	
		Z	5.77	66.61	16.12		130.0	
10641-AAC	IEEE 802.11ac WiFi (160MHz, MCS5, 90pc duty cycle)	X	6.20	67.37	16.80	0.46	130.0	± 9.6 %
		Y	5.99	67.07	16.68		130.0	
		Z	5.89	66.77	16.22		130.0	
10642-AAC	IEEE 802.11ac WiFi (160MHz, MCS6, 90pc duty cycle)	X	6.21	67.55	17.04	0.46	130.0	± 9.6 %
		Y	5.96	67.13	16.88		130.0	
		Z	5.91	66.95	16.48		130.0	
10643-AAC	IEEE 802.11ac WiFi (160MHz, MCS7, 90pc duty cycle)	X	6.07	67.29	16.82	0.46	130.0	± 9.6 %
		Y	5.82	66.83	16.61		130.0	
		Z	5.75	66.62	16.20		130.0	
10644-AAC	IEEE 802.11ac WiFi (160MHz, MCS8, 90pc duty cycle)	X	6.18	67.64	17.01	0.46	130.0	± 9.6 %
		Y	5.86	66.97	16.70		130.0	
		Z	5.80	66.78	16.30		130.0	
10645-AAC	IEEE 802.11ac WiFi (160MHz, MCS9, 90pc duty cycle)	X	6.32	67.71	17.01	0.46	130.0	± 9.6 %
		Y	6.02	67.15	16.76		130.0	
		Z	5.94	66.88	16.32		130.0	
10646-AAE	LTE-TDD (SC-FDMA, 1 RB, 5 MHz, QPSK, UL Subframe=2,7)	X	29.01	129.72	45.71	9.30	60.0	± 9.6 %
		Y	5.69	90.29	32.95		60.0	
		Z	4.56	83.05	28.64		60.0	
10647-AAE	LTE-TDD (SC-FDMA, 1 RB, 20 MHz, QPSK, UL Subframe=2,7)	X	21.51	122.78	43.90	9.30	60.0	± 9.6 %
		Y	4.97	87.32	31.93		60.0	
		Z	4.08	80.83	27.85		60.0	
10648-AAA	CDMA2000 (1x Advanced)	X	0.81	66.86	12.34	0.00	150.0	± 9.6 %
		Y	0.34	60.00	5.68		150.0	
		Z	0.41	60.33	6.86		150.0	
10652-AAC	LTE-TDD (OFDMA, 5 MHz, E-TM 3.1, Clipping 44%)	X	3.65	68.11	17.48	2.23	80.0	± 9.6 %
		Y	3.21	67.42	16.62		80.0	
		Z	2.95	65.45	15.23		80.0	
10653-AAC	LTE-TDD (OFDMA, 10 MHz, E-TM 3.1, Clipping 44%)	X	4.08	66.78	17.31	2.23	80.0	± 9.6 %
		Y	3.68	66.09	16.72		80.0	
		Z	3.55	65.09	15.78		80.0	
10654-AAC	LTE-TDD (OFDMA, 15 MHz, E-TM 3.1, Clipping 44%)	X	4.05	66.29	17.25	2.23	80.0	± 9.6 %
		Y	3.70	65.54	16.72		80.0	
		Z	3.61	64.74	15.87		80.0	
10655-AAD	LTE-TDD (OFDMA, 20 MHz, E-TM 3.1, Clipping 44%)	X	4.11	66.21	17.27	2.23	80.0	± 9.6 %
		Y	3.77	65.36	16.73		80.0	
		Z	3.69	64.66	15.92		80.0	
10658-AAA	Pulse Waveform (200Hz, 10%)	X	100.00	110.76	25.43	10.00	50.0	± 9.6 %
		Y	4.64	72.25	12.92		50.0	
		Z	3.17	68.15	11.10		50.0	
10659-AAA	Pulse Waveform (200Hz, 20%)	X	100.00	113.44	25.61	6.99	60.0	± 9.6 %
		Y	100.00	99.40	18.82		60.0	
		Z	2.21	68.18	10.16		60.0	

10660- AAA	Pulse Waveform (200Hz, 40%)	X	100.00	123.86	28.72	3.98	80.0	± 9.6 %
		Y	100.00	91.99	14.37		80.0	
		Z	16.70	84.37	13.73		80.0	
10661- AAA	Pulse Waveform (200Hz, 60%)	X	100.00	148.43	37.17	2.22	100.0	± 9.6 %
		Y	0.23	60.00	3.27		100.0	
		Z	100.00	93.94	14.56		100.0	
10662- AAA	Pulse Waveform (200Hz, 80%)	X	100.00	271.45	80.22	0.97	120.0	± 9.6 %
		Y	0.00	84.29	98.51		120.0	
		Z	99.98	85.52	10.49		120.0	

<sup>E</sup> Uncertainty is determined using the max. deviation from linear response applying rectangular distribution and is expressed for the square of the field value.

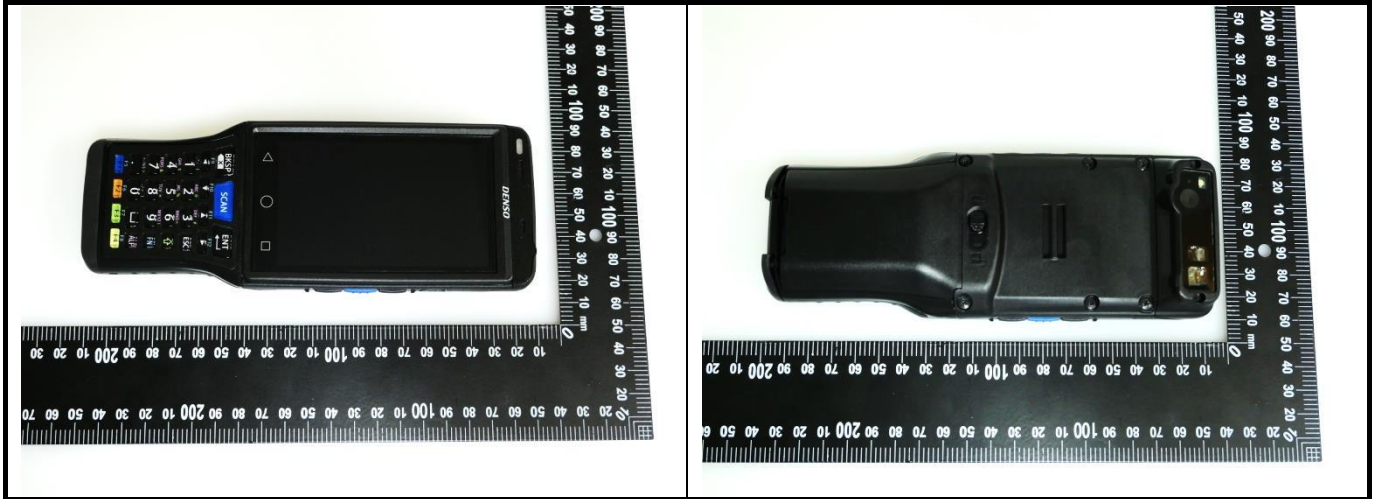


## Appendix D. Photographs of EUT and Setup

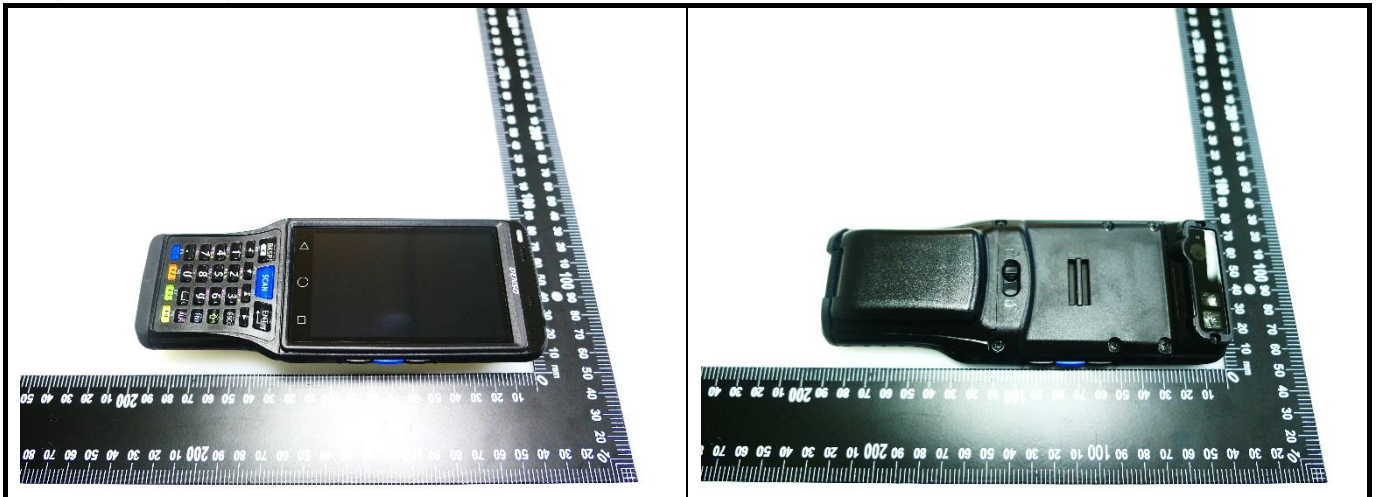
# FCC SAR Test Report

## <Photographs of EUT>

### Sample 1/2+ Battery 1

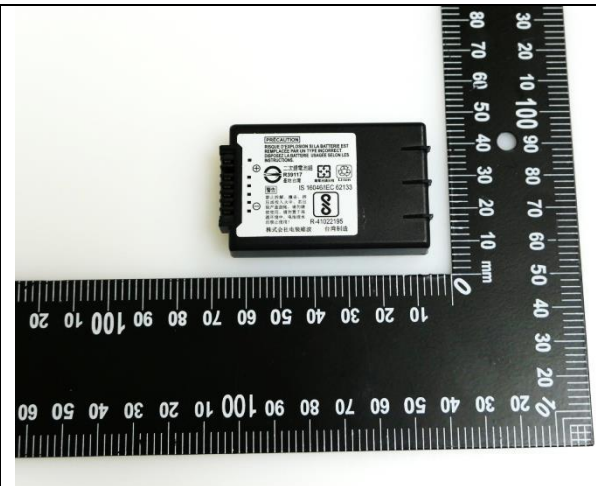
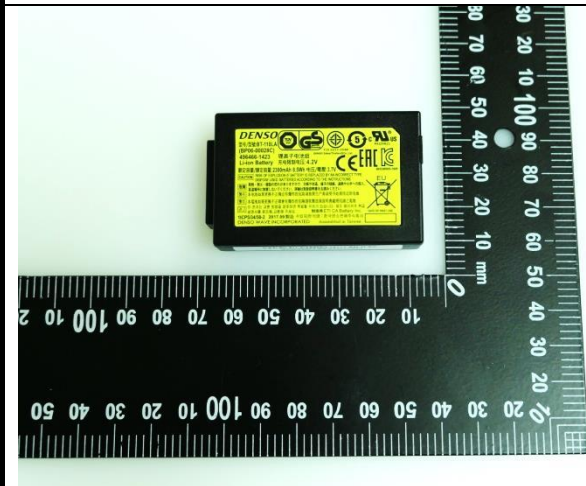


### Sample 1/2+ Battery 2

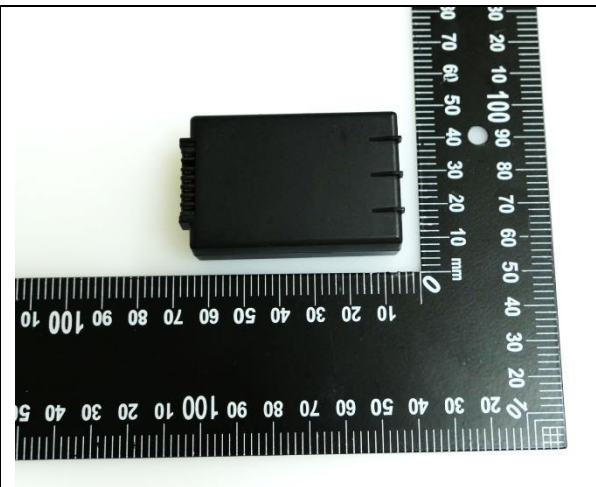
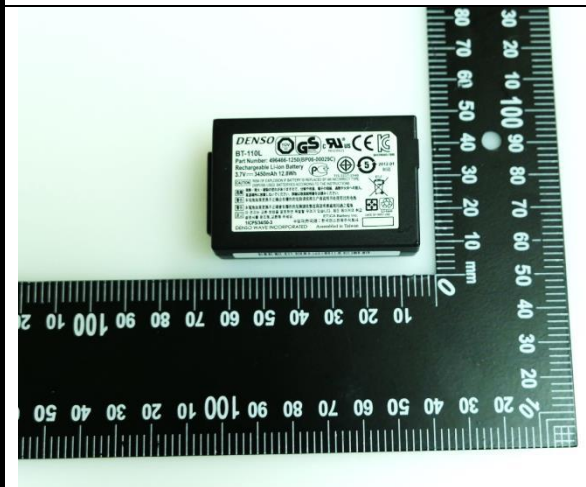


# FCC SAR Test Report

## Battery 1



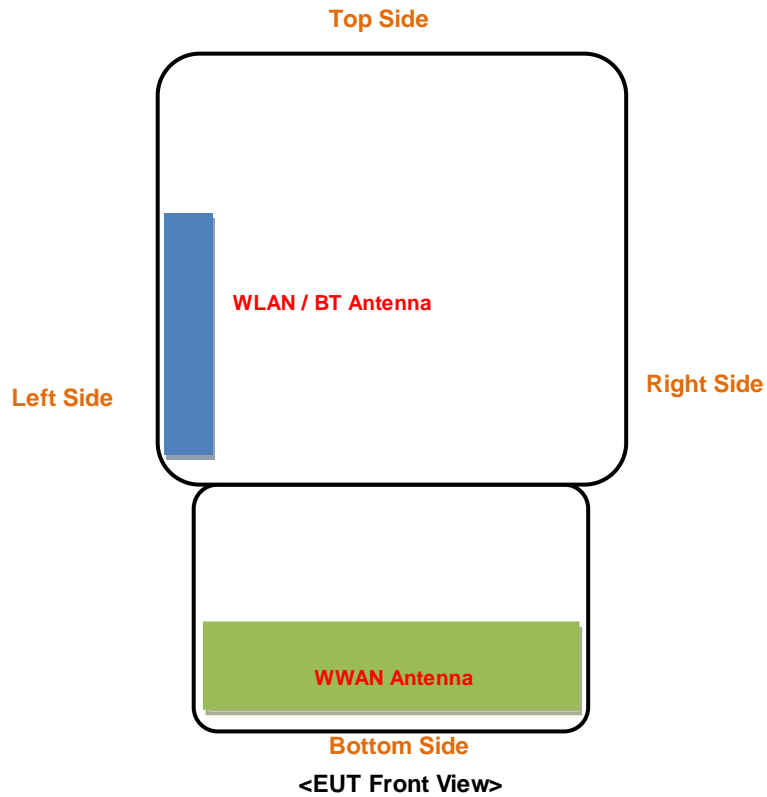
## Battery 2



# FCC SAR Test Report

## <Antenna Location>

Sample 1/ 2



The separation distance for antenna to edge:

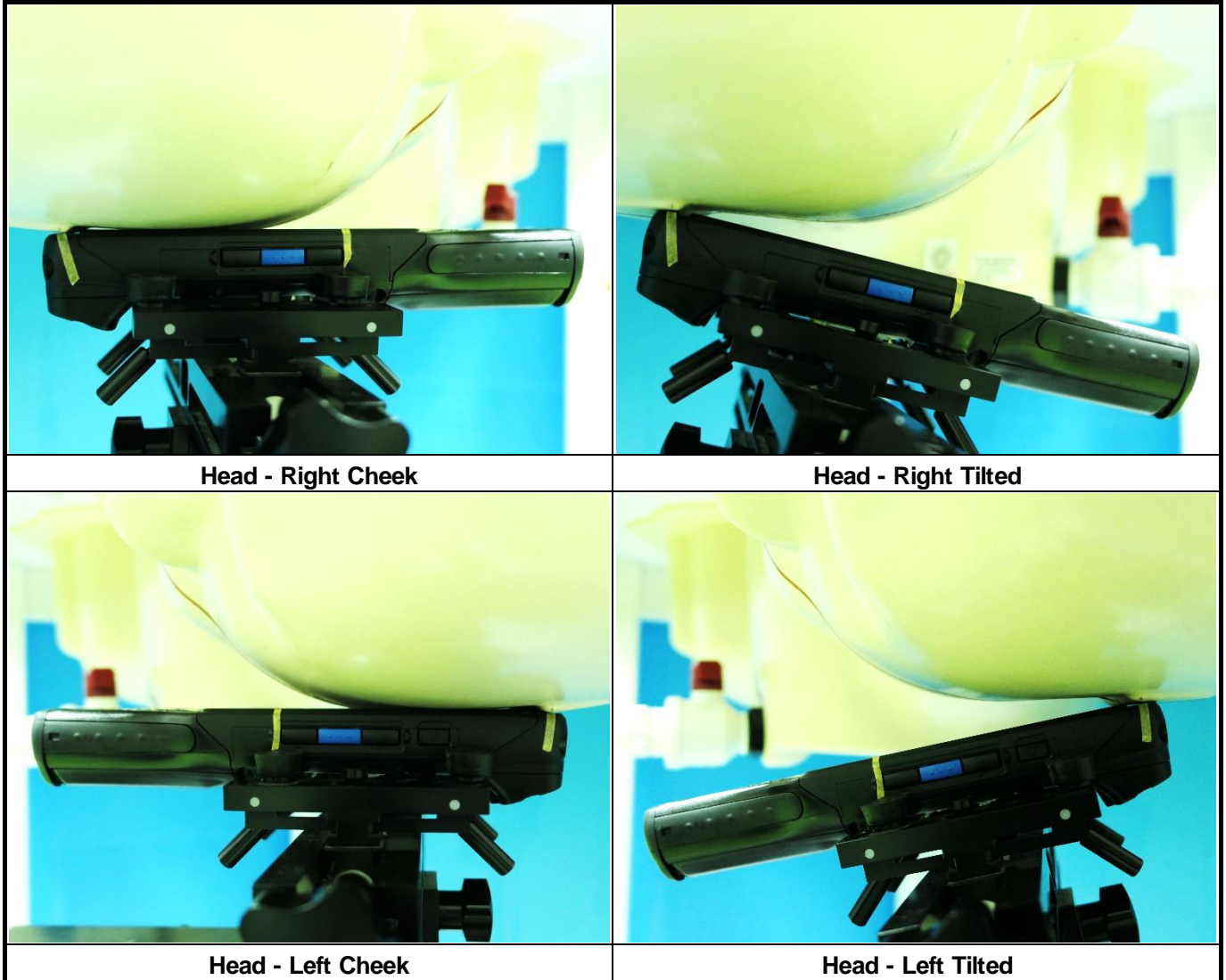
Antenna	To Top Side (mm)	To Bottom Side (mm)	To Left Side (mm)	To Right Side (mm)
WWAN-0	169.1	2.5	3.0	3.0
BT / WLAN-0	59.1	86.9	5.8	61.4



# FCC SAR Test Report

## <Photographs of SAR Setup>

Sample 1/2 + Battery 1



# FCC SAR Test Report

## Sample 1/2 + Battery 2



Head - Right Cheek



Head - Left Cheek

## Sample 1/2+ Battery 1

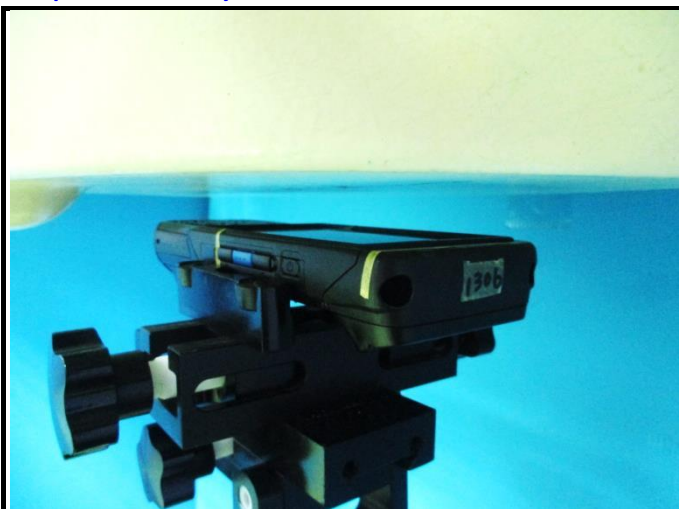


Body worn - Front Face of EUT at 15 mm

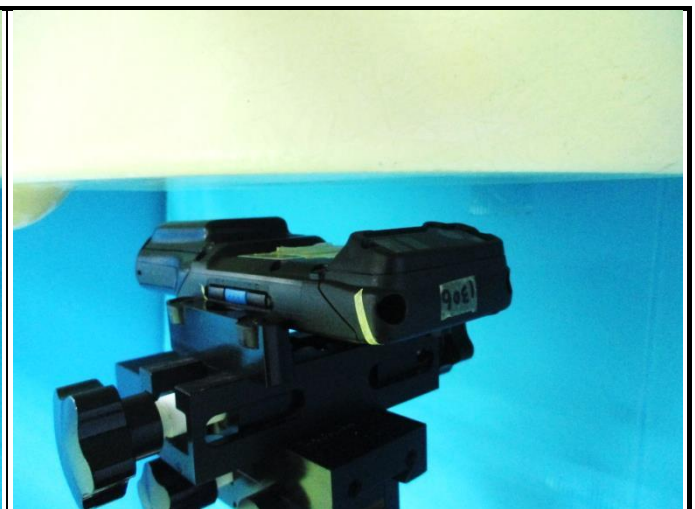


Body worn - Rear Face of EUT at 15 mm

## Sample 1/2+ Battery 2





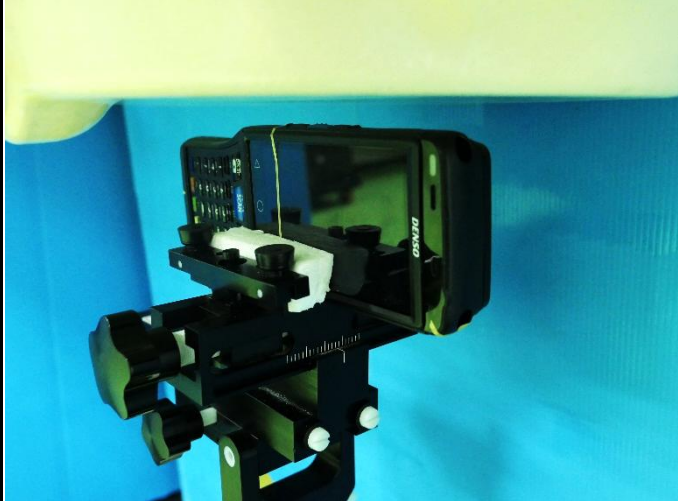


Body worn - Front Face of EUT at 15 mm



Body worn - Rear Face of EUT at 15 mm




# FCC SAR Test Report

## Sample 1/2+ Battery 1

	
<p><b>Hotspot – Front Side of EUT at 10 mm</b></p>	<p><b>Hotspot – Rear Side of EUT at 10 mm</b></p>
	
<p><b>Hotspot –Left Side of EUT at 10 mm</b></p>	<p><b>Hotspot – Right Side of EUT at 10 mm</b></p>
	
<p><b>Hotspot – Bottom Side of EUT at 10 mm</b></p>	

# FCC SAR Test Report

## Sample 1/2+ Battery 2

	
<p>Hotspot – Front Side of EUT at 10 mm</p>	<p>Hotspot – Left Side of EUT at 10 mm</p>
	
<p>Hotspot –Bottom Side of EUT at 10 mm</p>	

10607-AAB	IEEE 802.11ac WiFi (20MHz, MCS0, 90pc duty cycle)	X	4.62	66.38	16.55	0.46	130.0	± 9.6 %
		Y	4.36	66.29	16.39		130.0	
		Z	4.32	65.96	15.89		130.0	
10608-AAB	IEEE 802.11ac WiFi (20MHz, MCS1, 90pc duty cycle)	X	4.79	66.77	16.71	0.46	130.0	± 9.6 %
		Y	4.48	66.59	16.52		130.0	
		Z	4.44	66.24	16.02		130.0	
10609-AAB	IEEE 802.11ac WiFi (20MHz, MCS2, 90pc duty cycle)	X	4.69	66.62	16.55	0.46	130.0	± 9.6 %
		Y	4.38	66.42	16.33		130.0	
		Z	4.34	66.07	15.83		130.0	
10610-AAB	IEEE 802.11ac WiFi (20MHz, MCS3, 90pc duty cycle)	X	4.74	66.78	16.71	0.46	130.0	± 9.6 %
		Y	4.43	66.62	16.53		130.0	
		Z	4.39	66.25	16.01		130.0	
10611-AAB	IEEE 802.11ac WiFi (20MHz, MCS4, 90pc duty cycle)	X	4.65	66.59	16.56	0.46	130.0	± 9.6 %
		Y	4.34	66.38	16.35		130.0	
		Z	4.30	66.02	15.84		130.0	
10612-AAB	IEEE 802.11ac WiFi (20MHz, MCS5, 90pc duty cycle)	X	4.66	66.77	16.63	0.46	130.0	± 9.6 %
		Y	4.32	66.49	16.38		130.0	
		Z	4.28	66.10	15.86		130.0	
10613-AAB	IEEE 802.11ac WiFi (20MHz, MCS6, 90pc duty cycle)	X	4.65	66.61	16.49	0.46	130.0	± 9.6 %
		Y	4.31	66.27	16.20		130.0	
		Z	4.27	65.92	15.70		130.0	
10614-AAB	IEEE 802.11ac WiFi (20MHz, MCS7, 90pc duty cycle)	X	4.61	66.80	16.72	0.46	130.0	± 9.6 %
		Y	4.30	66.57	16.50		130.0	
		Z	4.26	66.18	15.97		130.0	
10615-AAB	IEEE 802.11ac WiFi (20MHz, MCS8, 90pc duty cycle)	X	4.65	66.44	16.35	0.46	130.0	± 9.6 %
		Y	4.33	66.19	16.09		130.0	
		Z	4.29	65.85	15.60		130.0	
10616-AAB	IEEE 802.11ac WiFi (40MHz, MCS0, 90pc duty cycle)	X	5.27	66.73	16.68	0.46	130.0	± 9.6 %
		Y	5.01	66.49	16.56		130.0	
		Z	4.96	66.22	16.10		130.0	
10617-AAB	IEEE 802.11ac WiFi (40MHz, MCS1, 90pc duty cycle)	X	5.35	66.96	16.78	0.46	130.0	± 9.6 %
		Y	5.05	66.62	16.60		130.0	
		Z	4.98	66.29	16.11		130.0	
10618-AAB	IEEE 802.11ac WiFi (40MHz, MCS2, 90pc duty cycle)	X	5.23	66.97	16.80	0.46	130.0	± 9.6 %
		Y	4.95	66.64	16.63		130.0	
		Z	4.90	66.35	16.15		130.0	
10619-AAB	IEEE 802.11ac WiFi (40MHz, MCS3, 90pc duty cycle)	X	5.24	66.75	16.62	0.46	130.0	± 9.6 %
		Y	5.02	66.64	16.56		130.0	
		Z	4.94	66.26	16.04		130.0	
10620-AAB	IEEE 802.11ac WiFi (40MHz, MCS4, 90pc duty cycle)	X	5.32	66.76	16.68	0.46	130.0	± 9.6 %
		Y	5.04	66.47	16.52		130.0	
		Z	4.99	66.18	16.05		130.0	
10621-AAB	IEEE 802.11ac WiFi (40MHz, MCS5, 90pc duty cycle)	X	5.33	66.89	16.85	0.46	130.0	± 9.6 %
		Y	5.05	66.58	16.71		130.0	
		Z	5.01	66.34	16.25		130.0	
10622-AAB	IEEE 802.11ac WiFi (40MHz, MCS6, 90pc duty cycle)	X	5.35	67.10	16.96	0.46	130.0	± 9.6 %
		Y	5.04	66.69	16.76		130.0	
		Z	4.99	66.41	16.29		130.0	

10623-AAB	IEEE 802.11ac WiFi (40MHz, MCS7, 90pc duty cycle)	X	5.22	66.58	16.57	0.46	130.0	± 9.6 %
		Y	4.94	66.25	16.38		130.0	
		Z	4.90	66.00	15.94		130.0	
10624-AAB	IEEE 802.11ac WiFi (40MHz, MCS8, 90pc duty cycle)	X	5.41	66.77	16.72	0.46	130.0	± 9.6 %
		Y	5.13	66.51	16.58		130.0	
		Z	5.08	66.25	16.13		130.0	
10625-AAB	IEEE 802.11ac WiFi (40MHz, MCS9, 90pc duty cycle)	X	5.67	67.47	17.13	0.46	130.0	± 9.6 %
		Y	5.24	66.76	16.78		130.0	
		Z	5.18	66.46	16.30		130.0	
10626-AAB	IEEE 802.11ac WiFi (80MHz, MCS0, 90pc duty cycle)	X	5.58	66.75	16.62	0.46	130.0	± 9.6 %
		Y	5.35	66.42	16.47		130.0	
		Z	5.31	66.24	16.06		130.0	
10627-AAB	IEEE 802.11ac WiFi (80MHz, MCS1, 90pc duty cycle)	X	5.83	67.40	16.91	0.46	130.0	± 9.6 %
		Y	5.63	67.24	16.86		130.0	
		Z	5.52	66.81	16.33		130.0	
10628-AAB	IEEE 802.11ac WiFi (80MHz, MCS2, 90pc duty cycle)	X	5.60	66.81	16.55	0.46	130.0	± 9.6 %
		Y	5.34	66.39	16.35		130.0	
		Z	5.30	66.19	15.94		130.0	
10629-AAB	IEEE 802.11ac WiFi (80MHz, MCS3, 90pc duty cycle)	X	5.68	66.90	16.59	0.46	130.0	± 9.6 %
		Y	5.54	66.91	16.62		130.0	
		Z	5.42	66.48	16.08		130.0	
10630-AAB	IEEE 802.11ac WiFi (80MHz, MCS4, 90pc duty cycle)	X	6.08	68.33	17.31	0.46	130.0	± 9.6 %
		Y	5.70	67.61	16.97		130.0	
		Z	5.55	67.05	16.38		130.0	
10631-AAB	IEEE 802.11ac WiFi (80MHz, MCS5, 90pc duty cycle)	X	5.97	68.08	17.36	0.46	130.0	± 9.6 %
		Y	5.66	67.59	17.16		130.0	
		Z	5.57	67.23	16.66		130.0	
10632-AAB	IEEE 802.11ac WiFi (80MHz, MCS6, 90pc duty cycle)	X	5.80	67.45	17.07	0.46	130.0	± 9.6 %
		Y	5.69	67.64	17.20		130.0	
		Z	5.55	67.10	16.61		130.0	
10633-AAB	IEEE 802.11ac WiFi (80MHz, MCS7, 90pc duty cycle)	X	5.66	67.00	16.67	0.46	130.0	± 9.6 %
		Y	5.35	66.42	16.41		130.0	
		Z	5.31	66.26	16.01		130.0	
10634-AAB	IEEE 802.11ac WiFi (80MHz, MCS8, 90pc duty cycle)	X	5.64	67.00	16.73	0.46	130.0	± 9.6 %
		Y	5.39	66.68	16.59		130.0	
		Z	5.35	66.50	16.18		130.0	
10635-AAB	IEEE 802.11ac WiFi (80MHz, MCS9, 90pc duty cycle)	X	5.52	66.33	16.14	0.46	130.0	± 9.6 %
		Y	5.23	65.84	15.88		130.0	
		Z	5.20	65.70	15.50		130.0	
10636-AAC	IEEE 802.11ac WiFi (160MHz, MCS0, 90pc duty cycle)	X	6.01	67.10	16.69	0.46	130.0	± 9.6 %
		Y	5.81	66.78	16.56		130.0	
		Z	5.76	66.60	16.16		130.0	
10637-AAC	IEEE 802.11ac WiFi (160MHz, MCS1, 90pc duty cycle)	X	6.16	67.51	16.88	0.46	130.0	± 9.6 %
		Y	5.94	67.13	16.72		130.0	
		Z	5.85	66.83	16.27		130.0	
10638-AAC	IEEE 802.11ac WiFi (160MHz, MCS2, 90pc duty cycle)	X	6.16	67.47	16.84	0.46	130.0	± 9.6 %
		Y	5.99	67.25	16.76		130.0	
		Z	5.90	66.99	16.32		130.0	

10639-AAC	IEEE 802.11ac WiFi (160MHz, MCS3, 90pc duty cycle)	X	6.13	67.38	16.83	0.46	130.0	± 9.6 %
		Y	5.90	67.00	16.68		130.0	
		Z	5.84	66.81	16.27		130.0	
10640-AAC	IEEE 802.11ac WiFi (160MHz, MCS4, 90pc duty cycle)	X	6.13	67.41	16.79	0.46	130.0	± 9.6 %
		Y	5.83	66.79	16.51		130.0	
		Z	5.77	66.61	16.12		130.0	
10641-AAC	IEEE 802.11ac WiFi (160MHz, MCS5, 90pc duty cycle)	X	6.20	67.37	16.80	0.46	130.0	± 9.6 %
		Y	5.99	67.07	16.68		130.0	
		Z	5.89	66.77	16.22		130.0	
10642-AAC	IEEE 802.11ac WiFi (160MHz, MCS6, 90pc duty cycle)	X	6.21	67.55	17.04	0.46	130.0	± 9.6 %
		Y	5.96	67.13	16.88		130.0	
		Z	5.91	66.95	16.48		130.0	
10643-AAC	IEEE 802.11ac WiFi (160MHz, MCS7, 90pc duty cycle)	X	6.07	67.29	16.82	0.46	130.0	± 9.6 %
		Y	5.82	66.83	16.61		130.0	
		Z	5.75	66.62	16.20		130.0	
10644-AAC	IEEE 802.11ac WiFi (160MHz, MCS8, 90pc duty cycle)	X	6.18	67.64	17.01	0.46	130.0	± 9.6 %
		Y	5.86	66.97	16.70		130.0	
		Z	5.80	66.78	16.30		130.0	
10645-AAC	IEEE 802.11ac WiFi (160MHz, MCS9, 90pc duty cycle)	X	6.32	67.71	17.01	0.46	130.0	± 9.6 %
		Y	6.02	67.15	16.76		130.0	
		Z	5.94	66.88	16.32		130.0	
10646-AAE	LTE-TDD (SC-FDMA, 1 RB, 5 MHz, QPSK, UL Subframe=2,7)	X	29.01	129.72	45.71	9.30	60.0	± 9.6 %
		Y	5.69	90.29	32.95		60.0	
		Z	4.56	83.05	28.64		60.0	
10647-AAE	LTE-TDD (SC-FDMA, 1 RB, 20 MHz, QPSK, UL Subframe=2,7)	X	21.51	122.78	43.90	9.30	60.0	± 9.6 %
		Y	4.97	87.32	31.93		60.0	
		Z	4.08	80.83	27.85		60.0	
10648-AAA	CDMA2000 (1x Advanced)	X	0.81	66.86	12.34	0.00	150.0	± 9.6 %
		Y	0.34	60.00	5.68		150.0	
		Z	0.41	60.33	6.86		150.0	
10652-AAC	LTE-TDD (OFDMA, 5 MHz, E-TM 3.1, Clipping 44%)	X	3.65	68.11	17.48	2.23	80.0	± 9.6 %
		Y	3.21	67.42	16.62		80.0	
		Z	2.95	65.45	15.23		80.0	
10653-AAC	LTE-TDD (OFDMA, 10 MHz, E-TM 3.1, Clipping 44%)	X	4.08	66.78	17.31	2.23	80.0	± 9.6 %
		Y	3.68	66.09	16.72		80.0	
		Z	3.55	65.09	15.78		80.0	
10654-AAC	LTE-TDD (OFDMA, 15 MHz, E-TM 3.1, Clipping 44%)	X	4.05	66.29	17.25	2.23	80.0	± 9.6 %
		Y	3.70	65.54	16.72		80.0	
		Z	3.61	64.74	15.87		80.0	
10655-AAD	LTE-TDD (OFDMA, 20 MHz, E-TM 3.1, Clipping 44%)	X	4.11	66.21	17.27	2.23	80.0	± 9.6 %
		Y	3.77	65.36	16.73		80.0	
		Z	3.69	64.66	15.92		80.0	
10658-AAA	Pulse Waveform (200Hz, 10%)	X	100.00	110.76	25.43	10.00	50.0	± 9.6 %
		Y	4.64	72.25	12.92		50.0	
		Z	3.17	68.15	11.10		50.0	
10659-AAA	Pulse Waveform (200Hz, 20%)	X	100.00	113.44	25.61	6.99	60.0	± 9.6 %
		Y	100.00	99.40	18.82		60.0	
		Z	2.21	68.18	10.16		60.0	

10660- AAA	Pulse Waveform (200Hz, 40%)	X	100.00	123.86	28.72	3.98	80.0	± 9.6 %
		Y	100.00	91.99	14.37		80.0	
		Z	16.70	84.37	13.73		80.0	
10661- AAA	Pulse Waveform (200Hz, 60%)	X	100.00	148.43	37.17	2.22	100.0	± 9.6 %
		Y	0.23	60.00	3.27		100.0	
		Z	100.00	93.94	14.56		100.0	
10662- AAA	Pulse Waveform (200Hz, 80%)	X	100.00	271.45	80.22	0.97	120.0	± 9.6 %
		Y	0.00	84.29	98.51		120.0	
		Z	99.98	85.52	10.49		120.0	

<sup>E</sup> Uncertainty is determined using the max. deviation from linear response applying rectangular distribution and is expressed for the square of the field value.