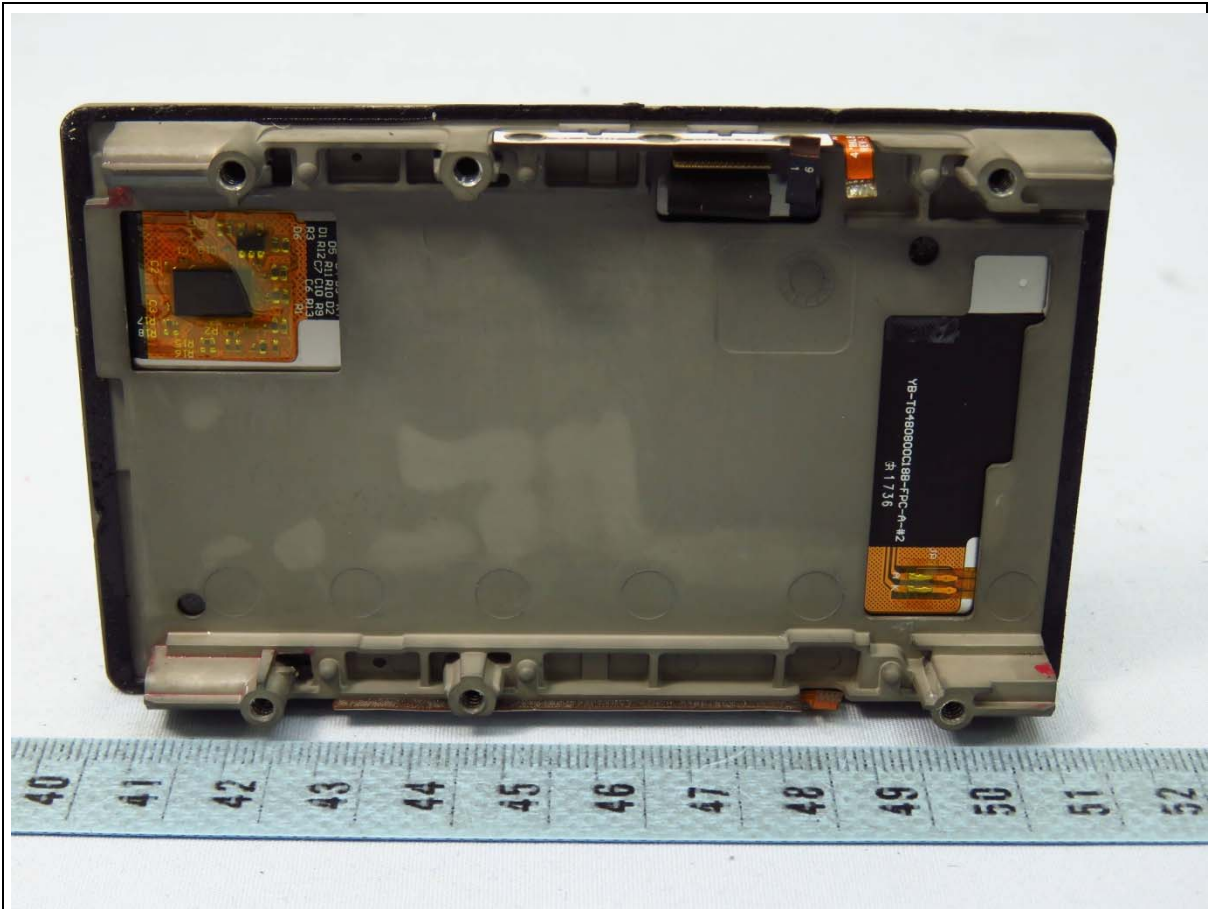
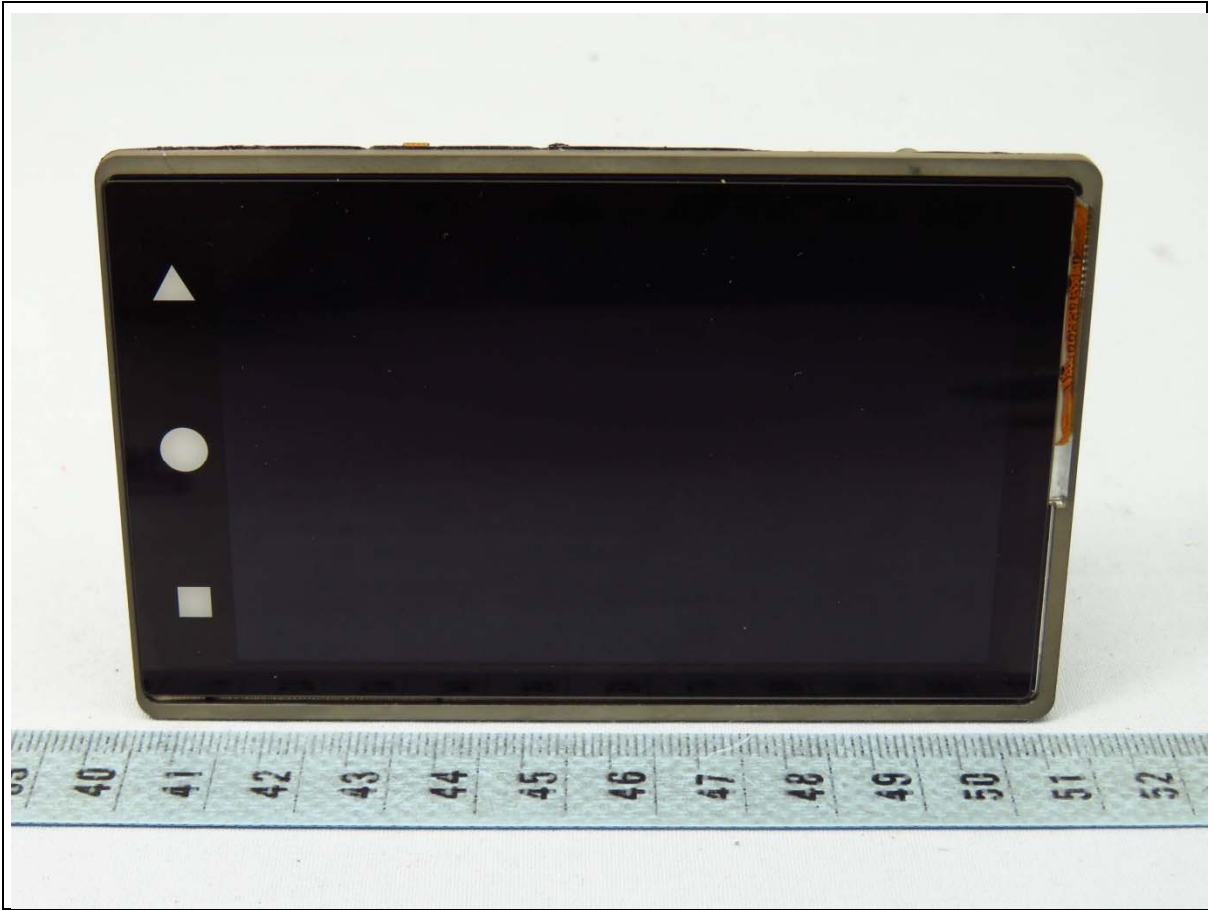
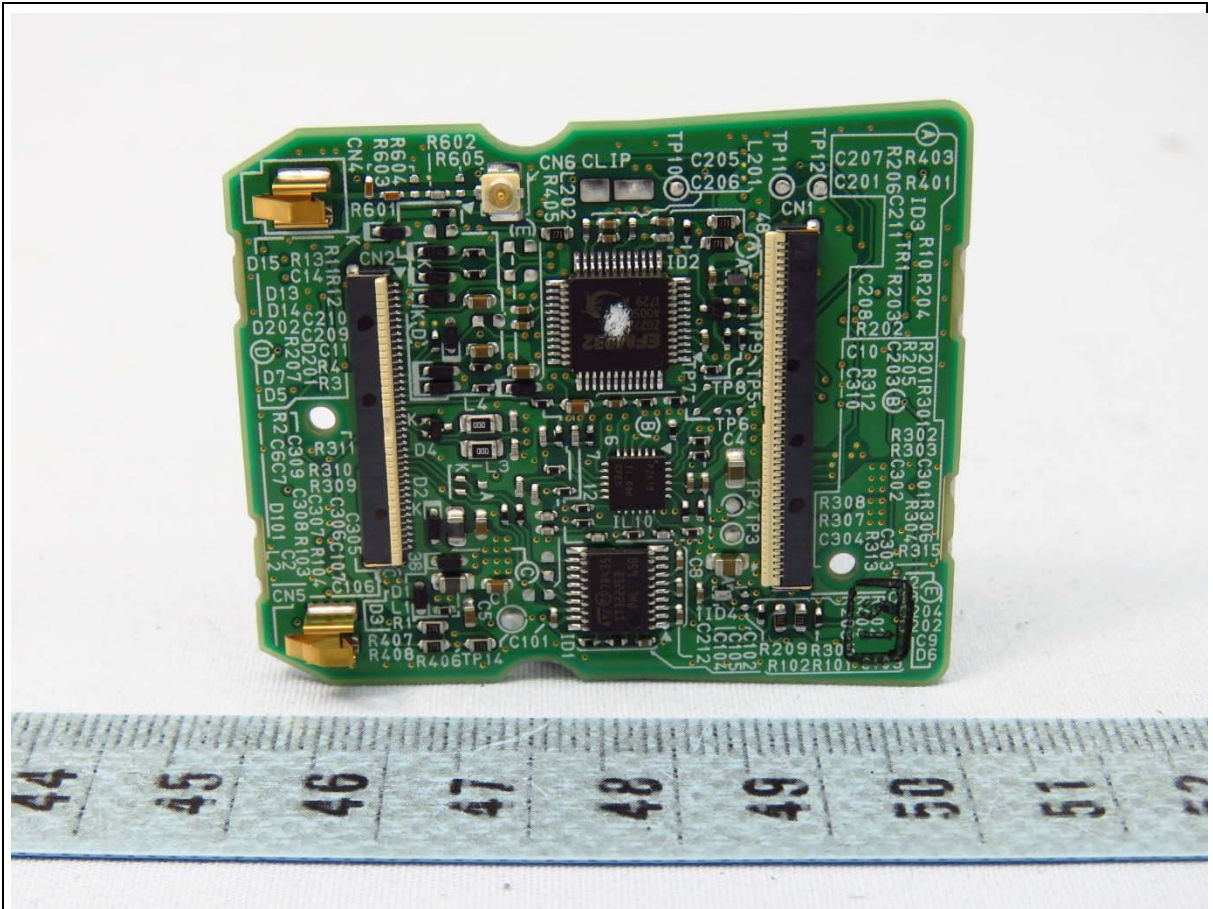
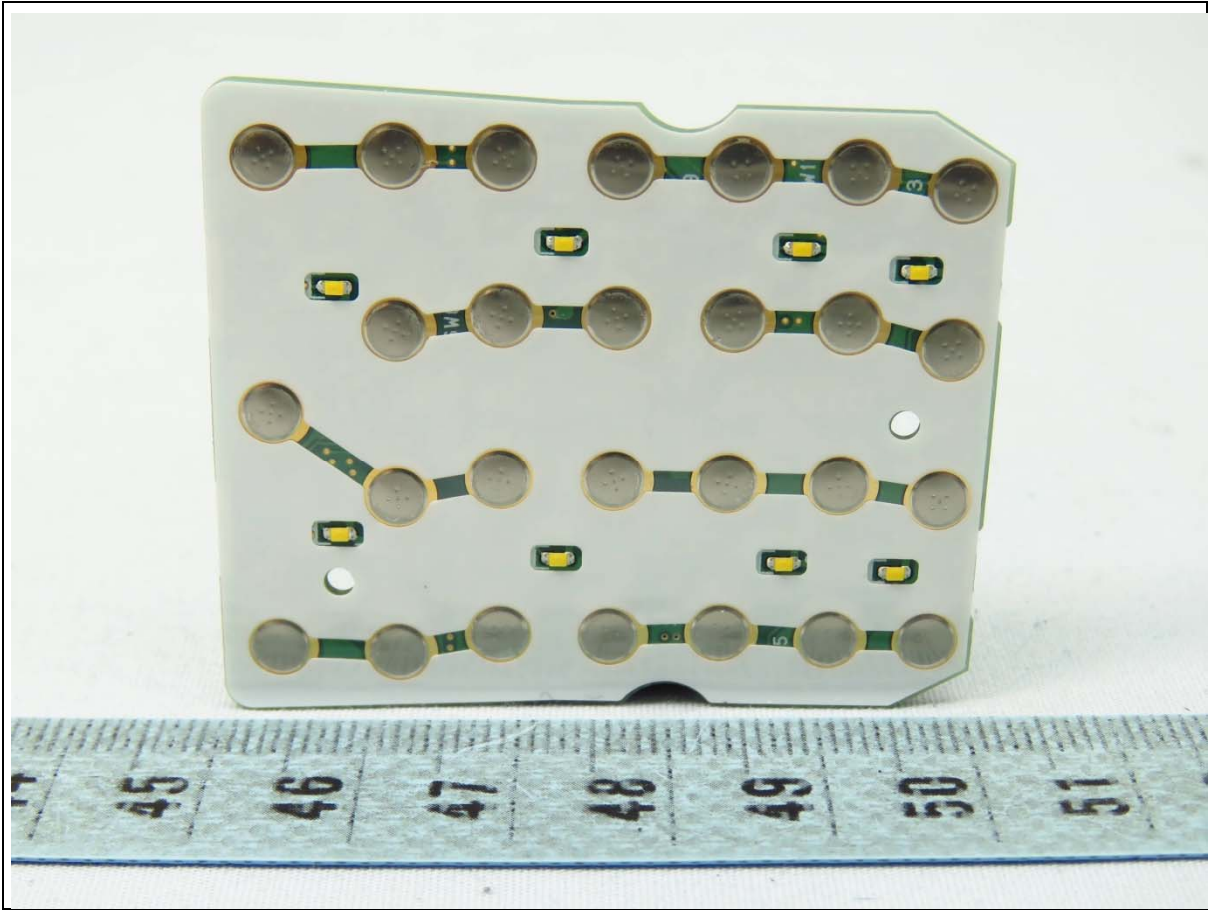


BT/WLAN Chip



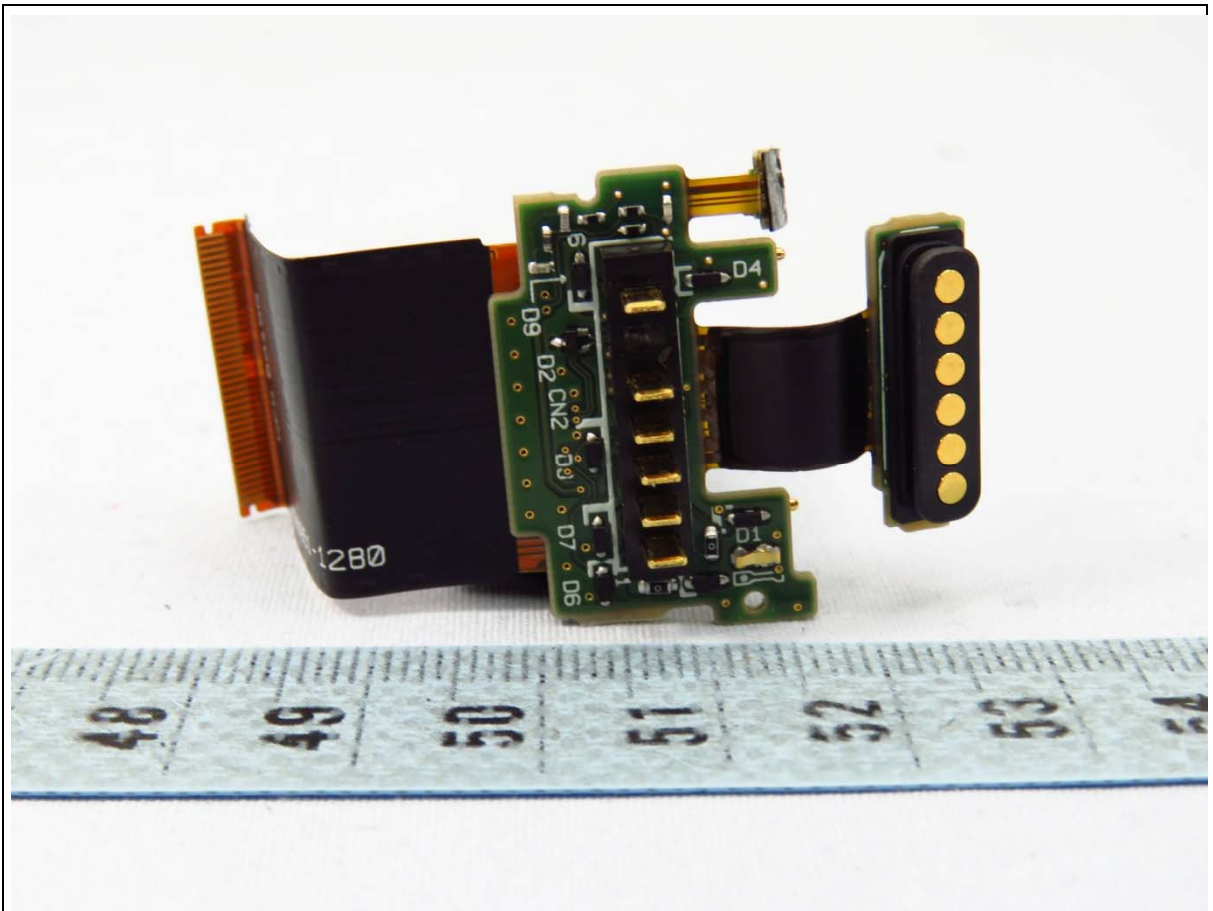
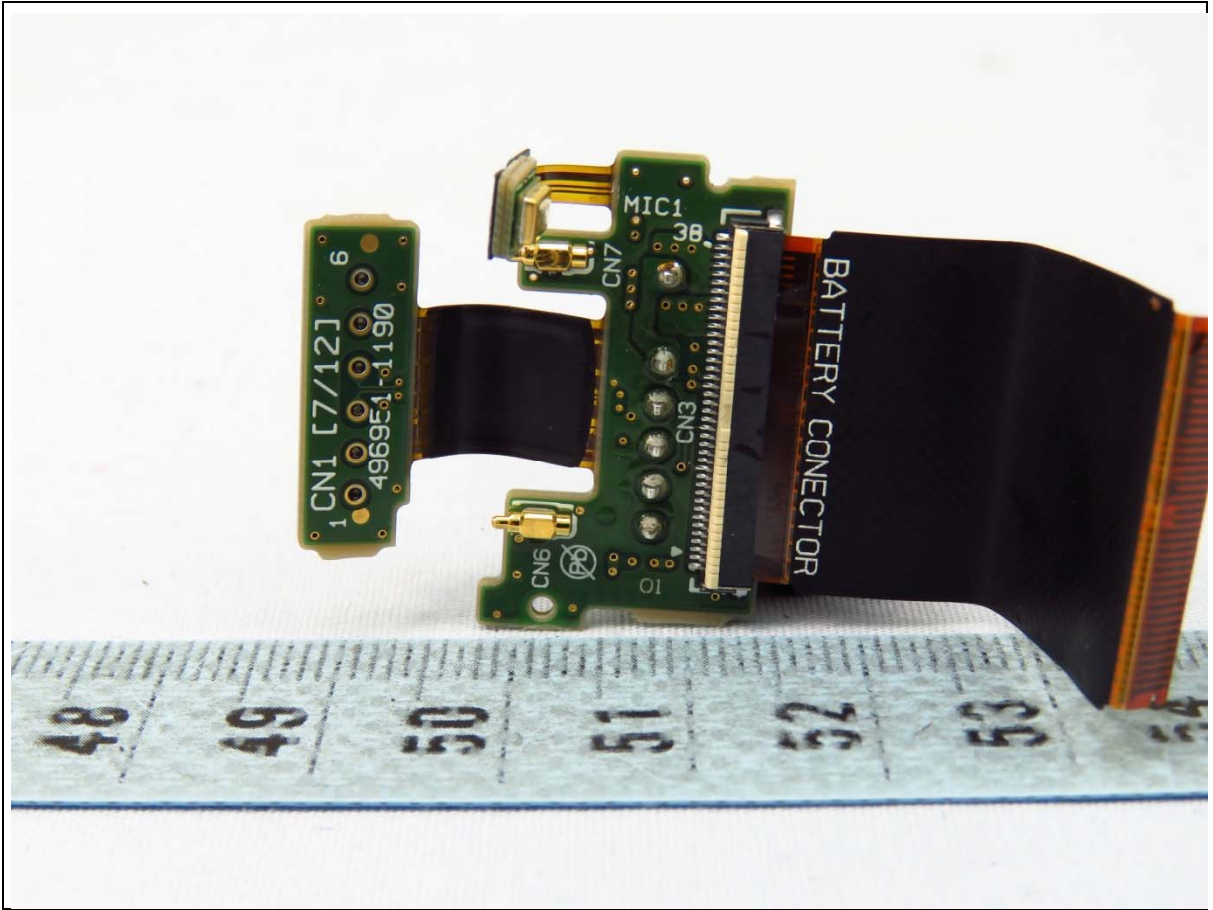






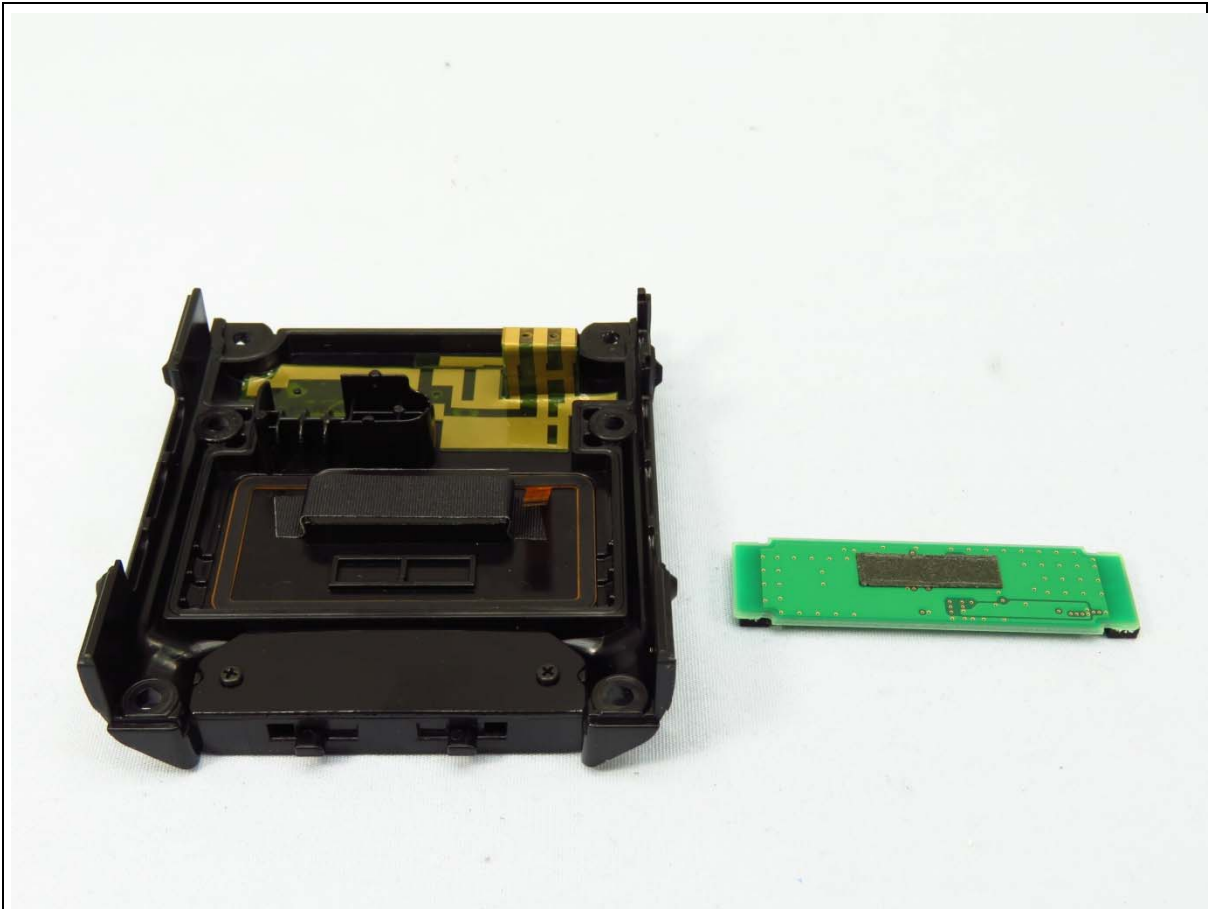
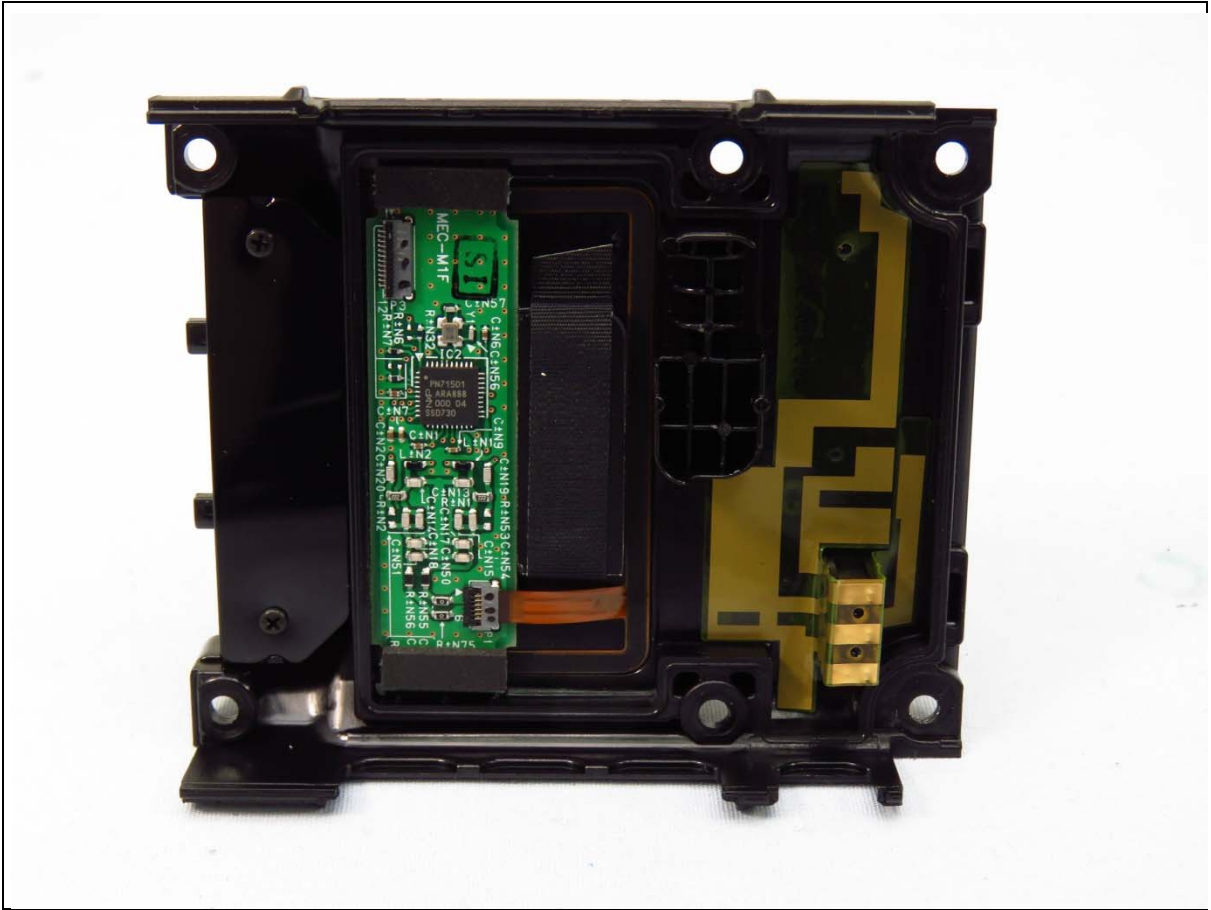






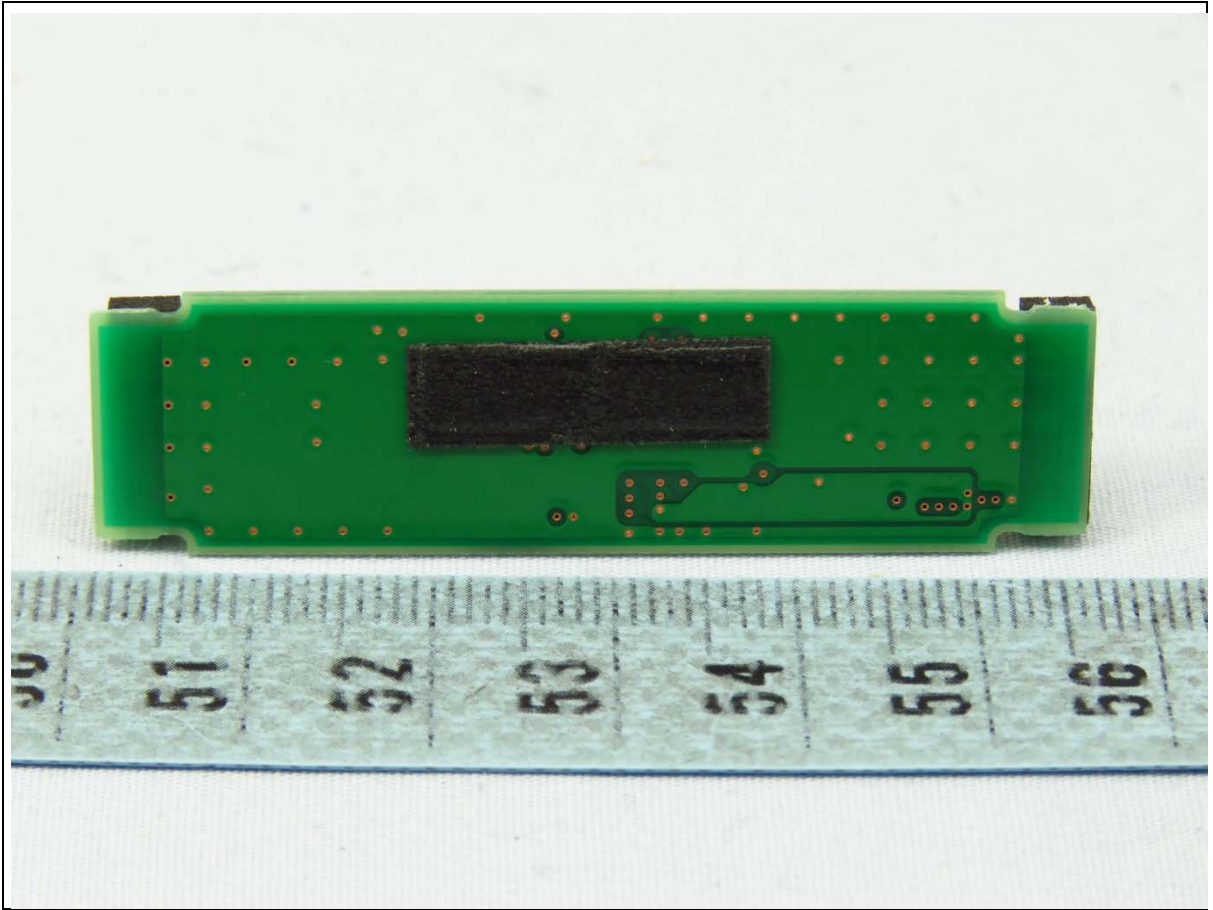


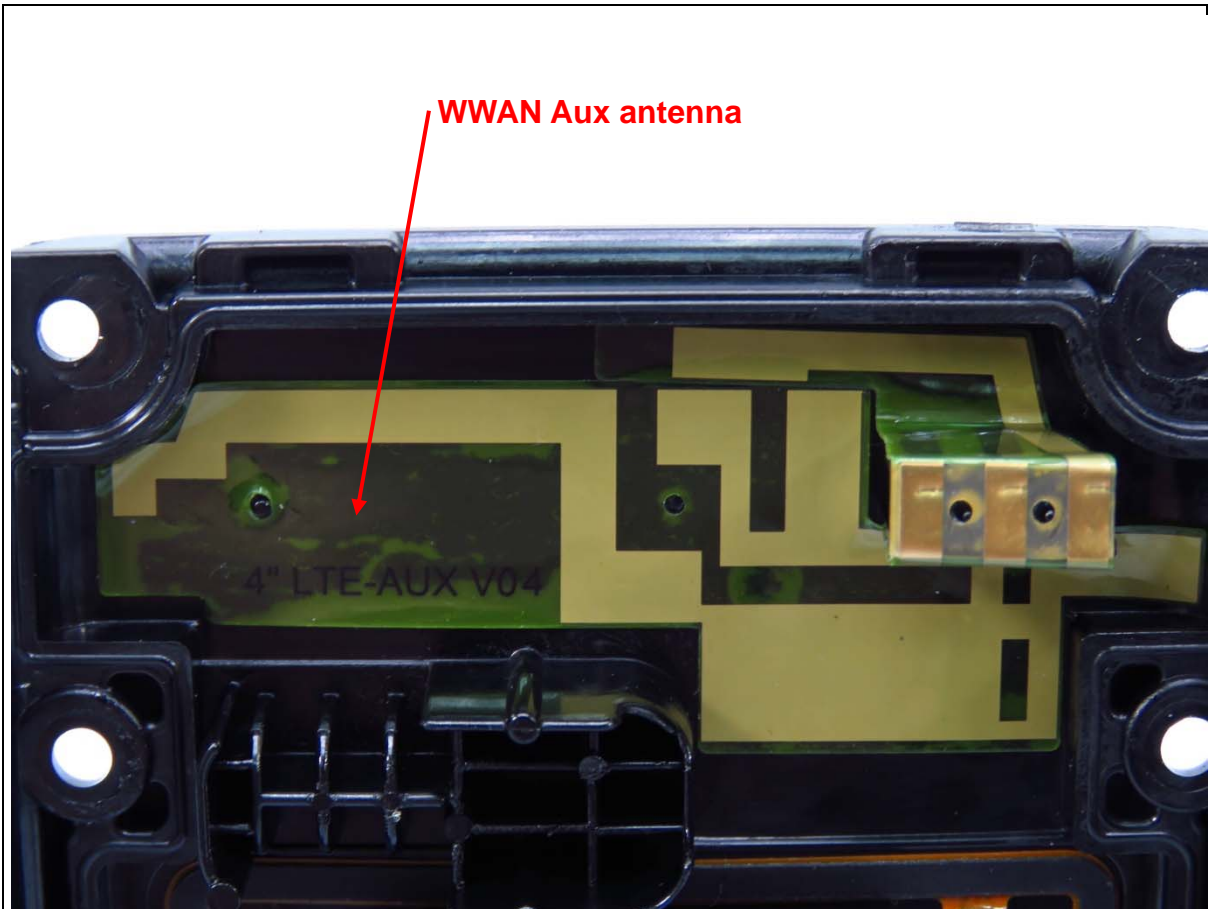
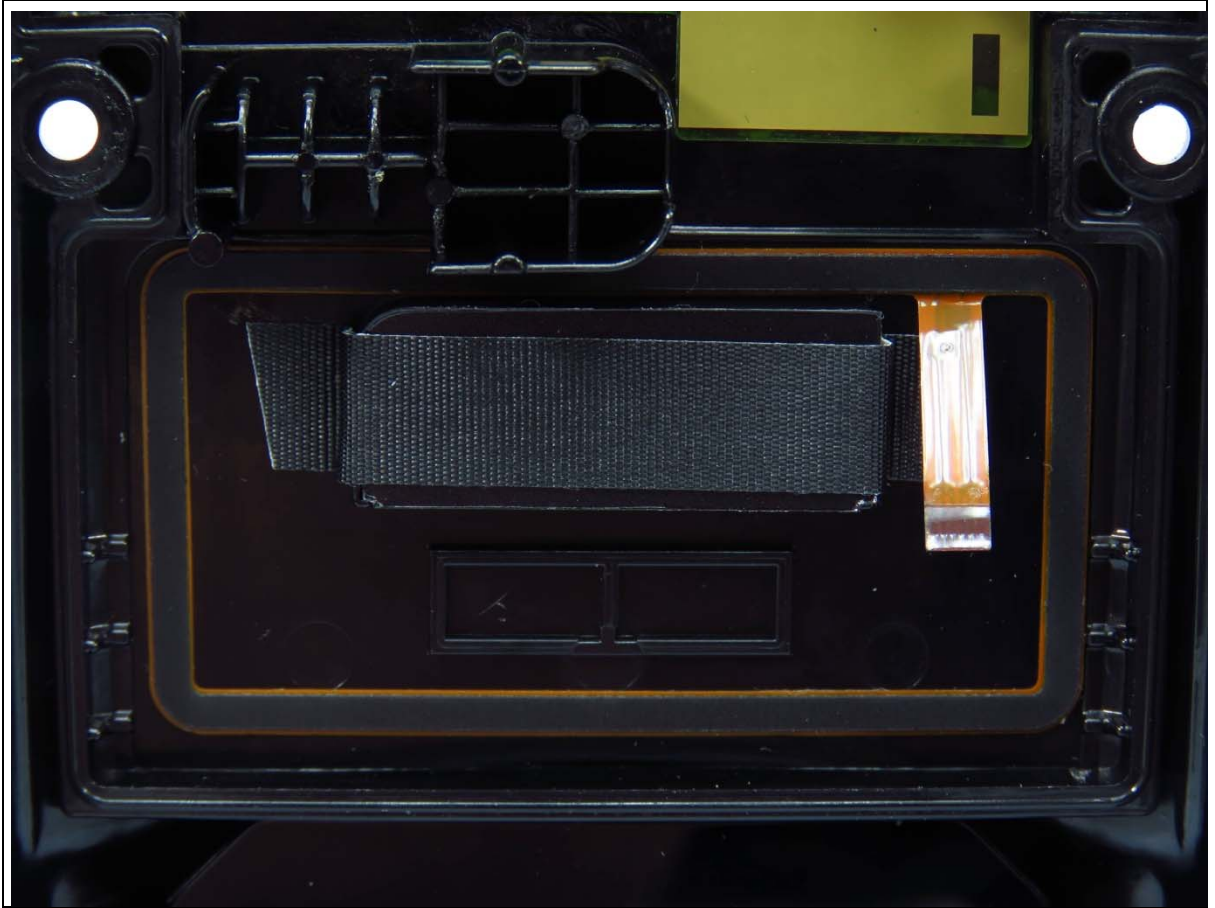
















4964661246702779

**PRÉCAUTION**

RISQUE D'EXPLOSION SI LA BATTERIE EST REMPLACÉE PAR UN TYPE INCORRECT. DISPOSEZ LA BATTERIE USAGÉE SELON LES INSTRUCTIONS.



二次鋰電池組  
R39117  
產地:台灣



廢電池請回收



Li-ion00

**警告**

IS 16046/IEC 62133

禁止拆解、撞擊、擠壓或投入火中。若出現嚴重鼓脹，請勿繼續使用。請勿置于高溫環境中。電池浸水後禁止使用！



R-41022195

株式会社電裝維波

台灣製造

C180209-002-046-030

**DENSO**

型号/型號:BT-110LA  
(BP06-00028C)



496466-1246 鋰離子電池組  
Li-ion Battery 充電限制電壓: 4.2V

TIS 2217-2548  
DENSO Sales(Thailand)Co.,Ltd.

額定容量/額定容量: 2300mAh 8.5Wh 電壓/電壓: 3.7V



XZ100024-17007A

A/S 문의 : 82-31-340-1700

**CAUTION**

RISK OF EXPLOSION IF BATTERY IS REPLACED BY AN INCORRECT TYPE  
DISPOSE USED BATTERIES ACCORDING TO THE INSTRUCTIONS

**危険**

発熱・発火・破裂の恐れがありますので、分解や改造、端子の短絡、過熱や火中への投入、高温場所に放置しないでください。詳細は取扱説明書をお読みください。

**警告**

本電池如果更換不正確會有爆炸的危險請按照生產商說明書處理用過的電池

**警告**

本電池如果更換不正確會有爆炸的危險請依製造商說明書處理用過之電池

**경고**

이 전지는 교환 방법을 잘못하면 폭발할 우려가 있습니다. 제조 메이커의 취급 설명서를 참조해, 교환해 주세요. 製造商 ETI CA Battery Inc.



DATE OF FIRST USE

11CP5/34/50-2 2017.11 製造 수입자(한국)명 : 한국덴소판매주식회사  
DENSO WAVE INCORPORATED Assembled in Taiwan





**DENSO**



**BT-110L**

**Part Number: 496466-1250(BP06-00029C)**

**Rechargeable Li-ion Battery**

**3.7V --- 3450mAh 12.8Wh**



TIS 2217-2548

**CAUTION** RISK OF EXPLOSION IF BATTERY IS REPLACED BY AN INCORRECT TYPE  
DISPOSE USED BATTERYIES ACCORDING TO THE INSTRUCTIONS

**危険** 発熱・発火・破裂の恐れがありますので、分解や改造、端子の短絡、過熱や火中への投入、  
高温場所に放置しないでください。詳細は取扱説明書をお読みください。

**警告** 本電池如果更換不正確會有爆炸的危險請按照生產商說明書處理用過的電池

**警告** 本電池如果更換不正確會有爆炸的危險請依製造商說明書處理用過之電池

**경고** 이 전지는 교환 방법을 잘못하면 폭발할 우려가 있습니다. 제조 메이커의 취급  
설명서를 참조해, 교환해 주세요.

ETICA Battery Inc.

11CP5/34/50-3

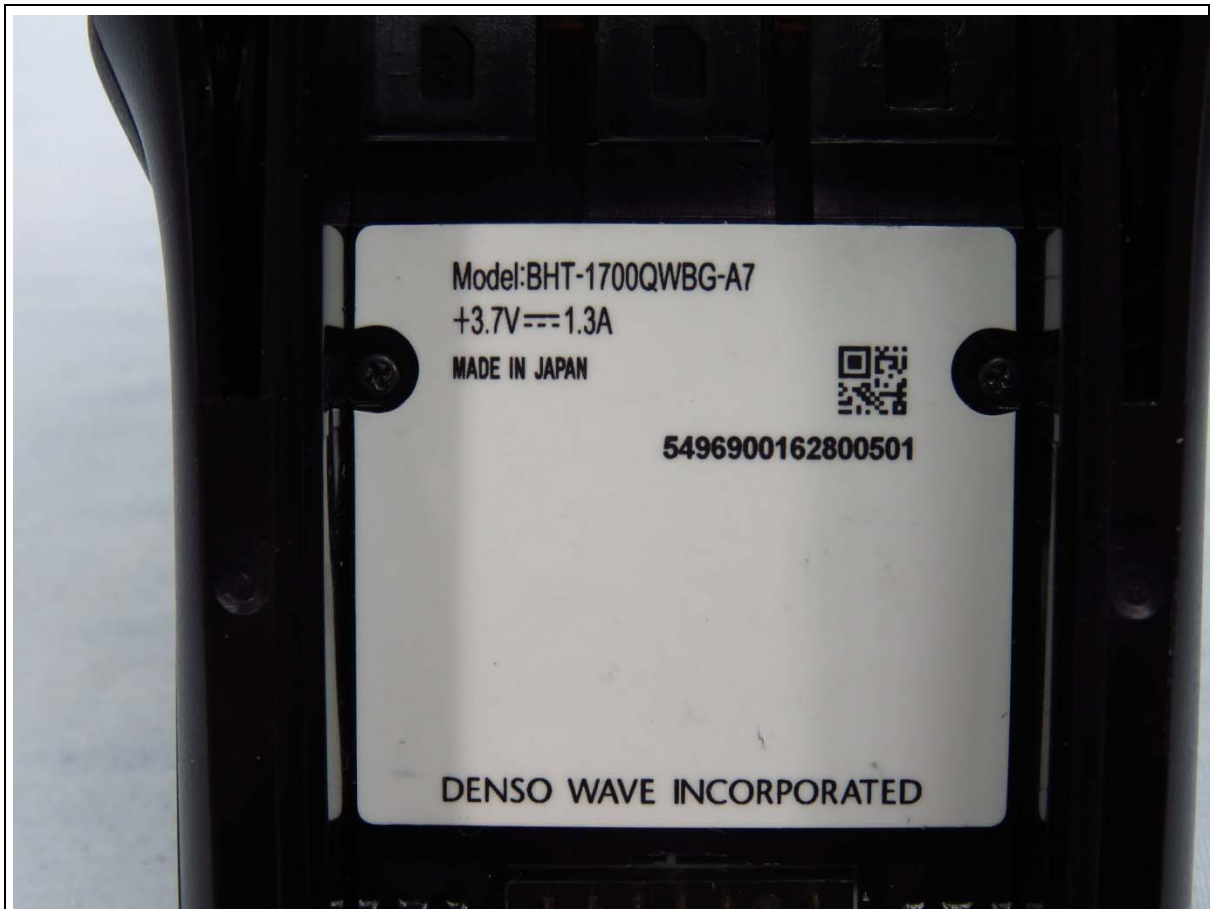
수입자(한국)명 : 한국덴소판매주식회사

DENSO WAVE INCORPORATED

Assembled in Taiwan

C180102-009-055-048

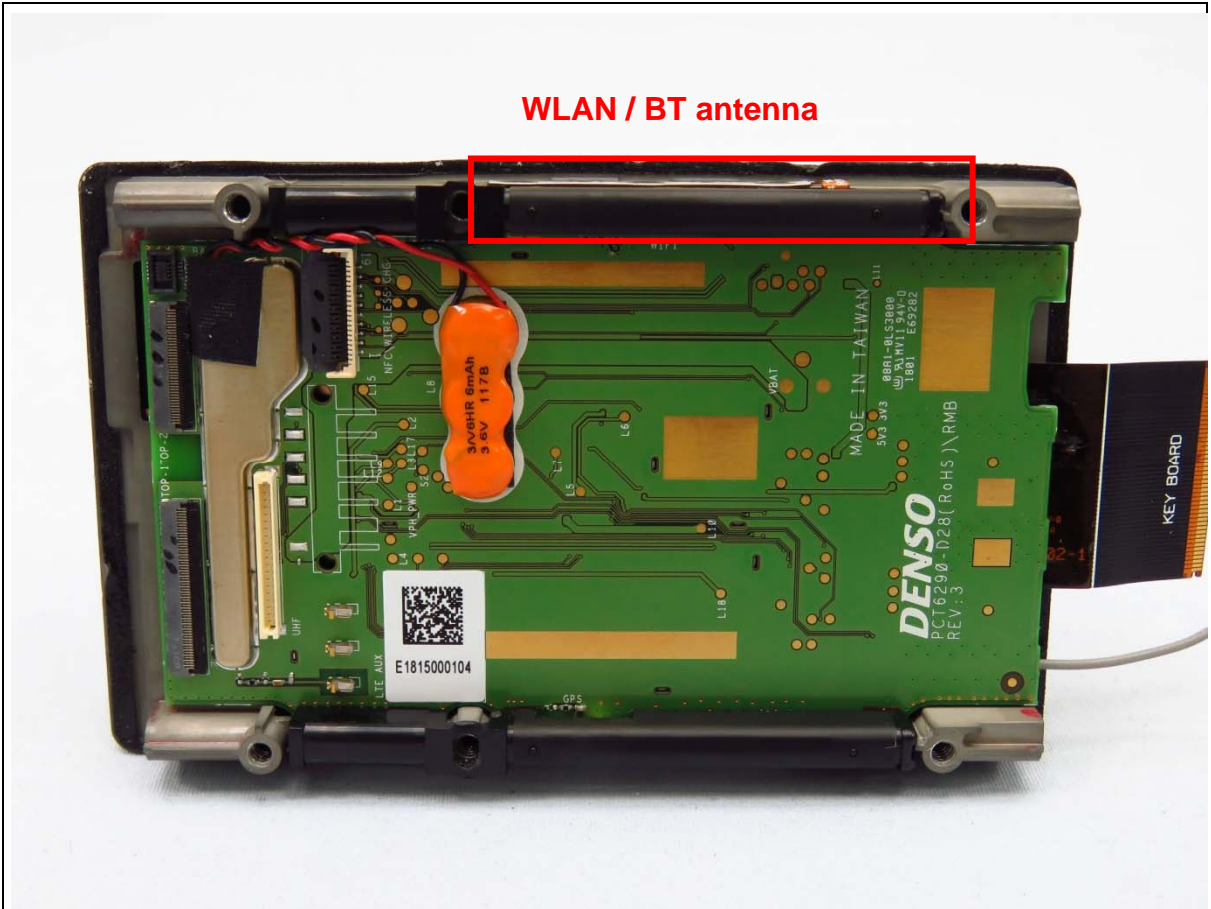




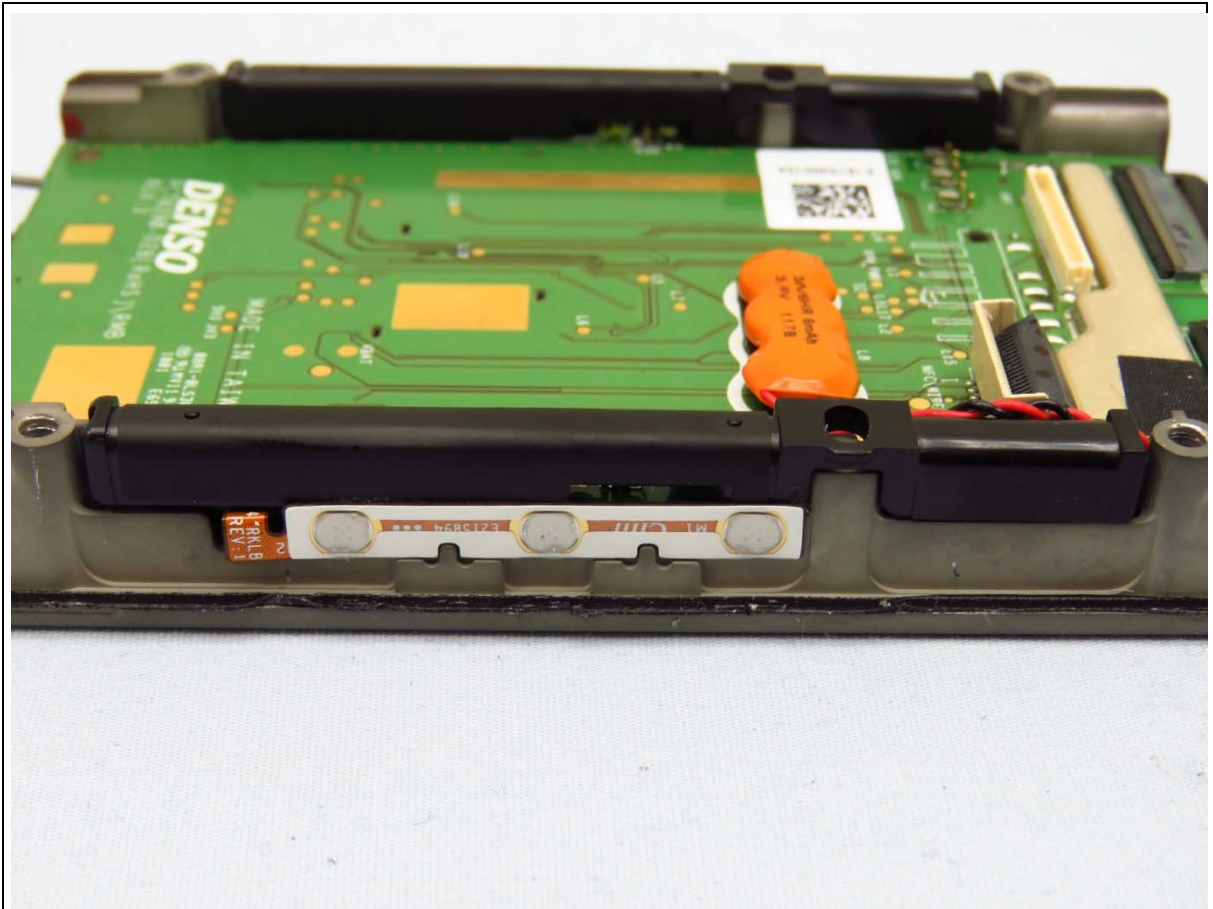
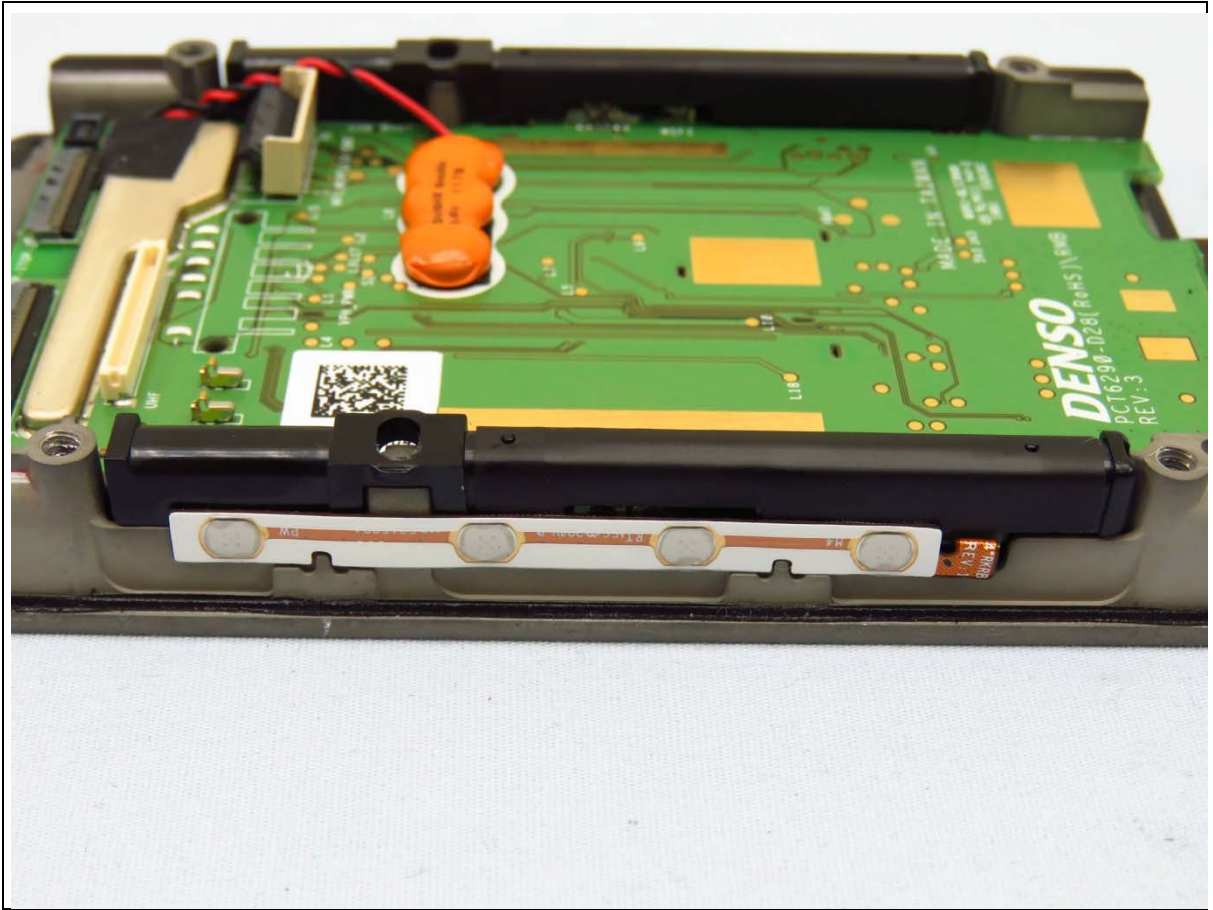


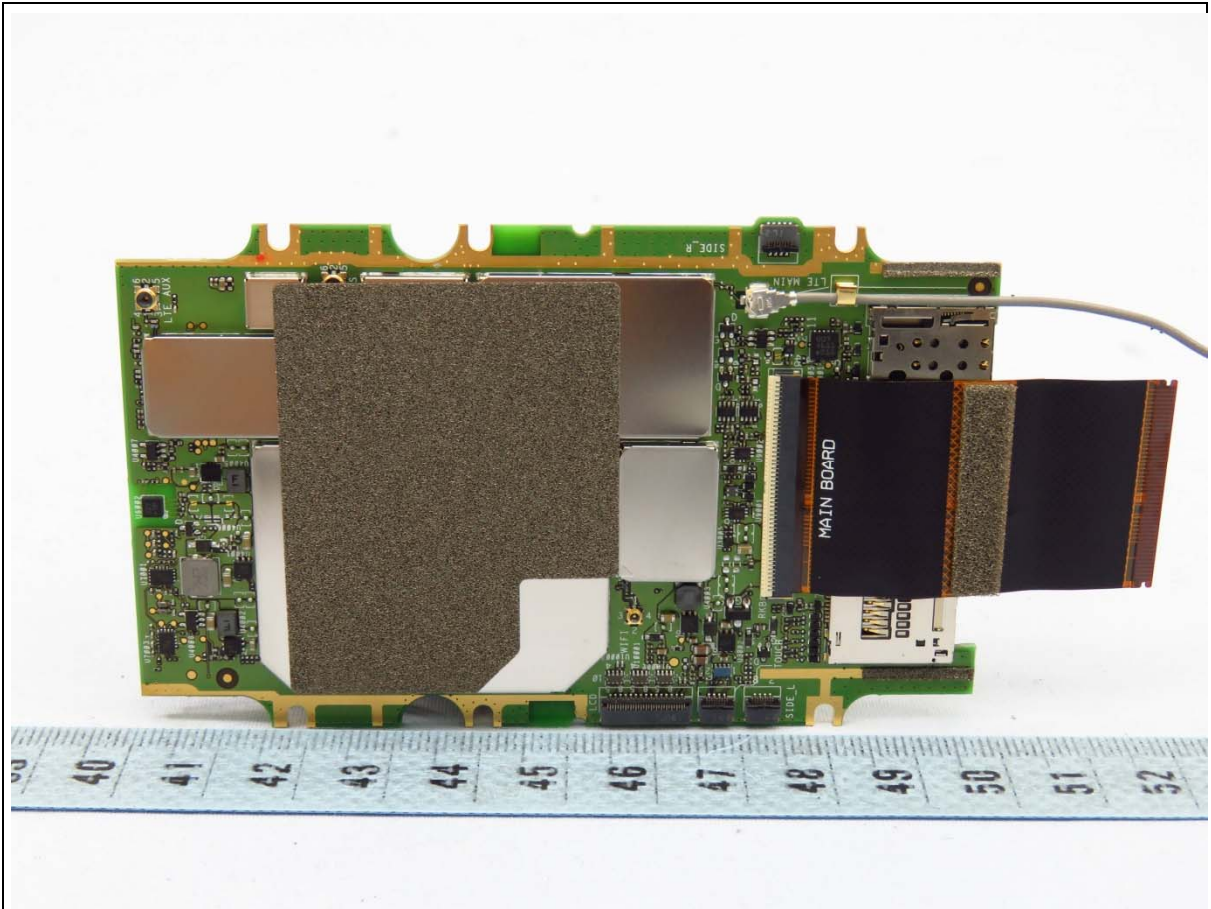
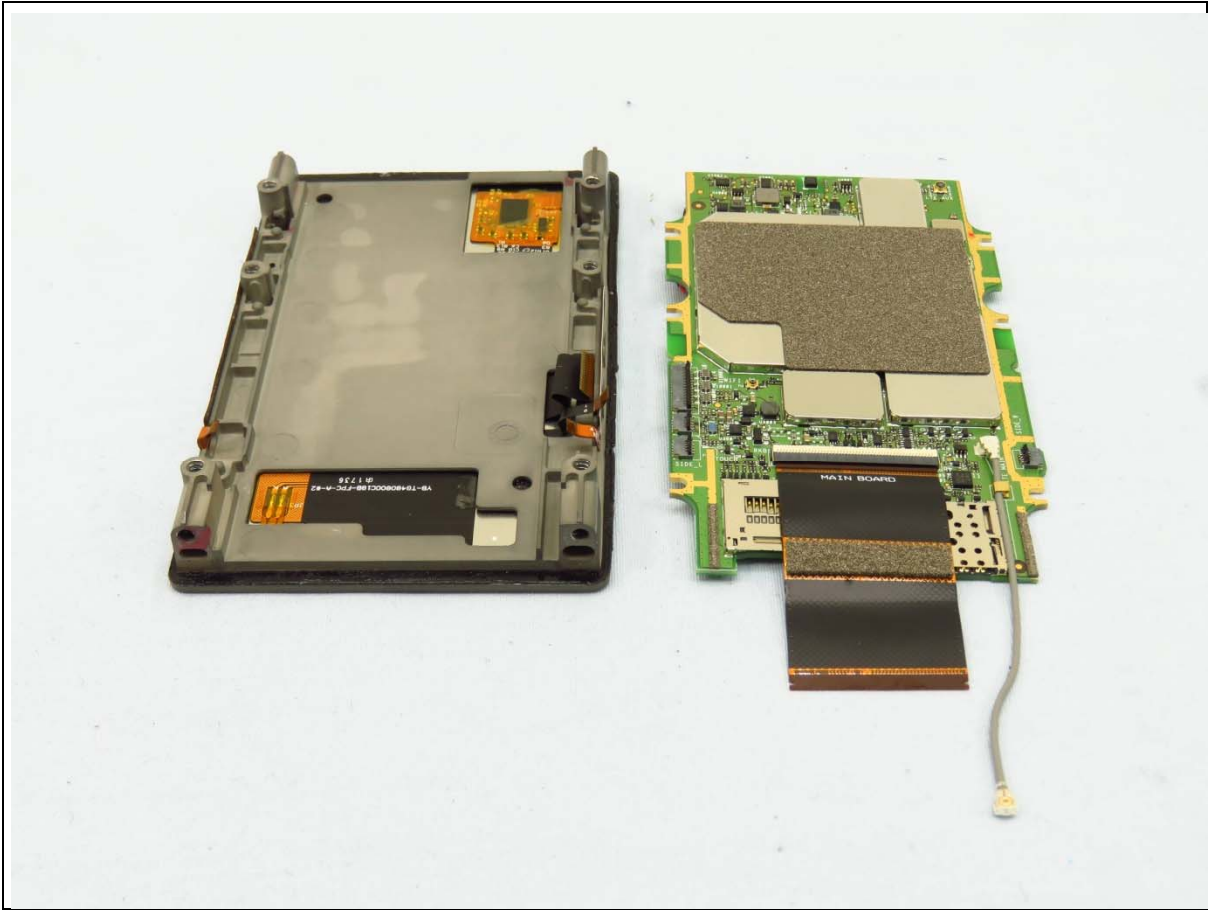




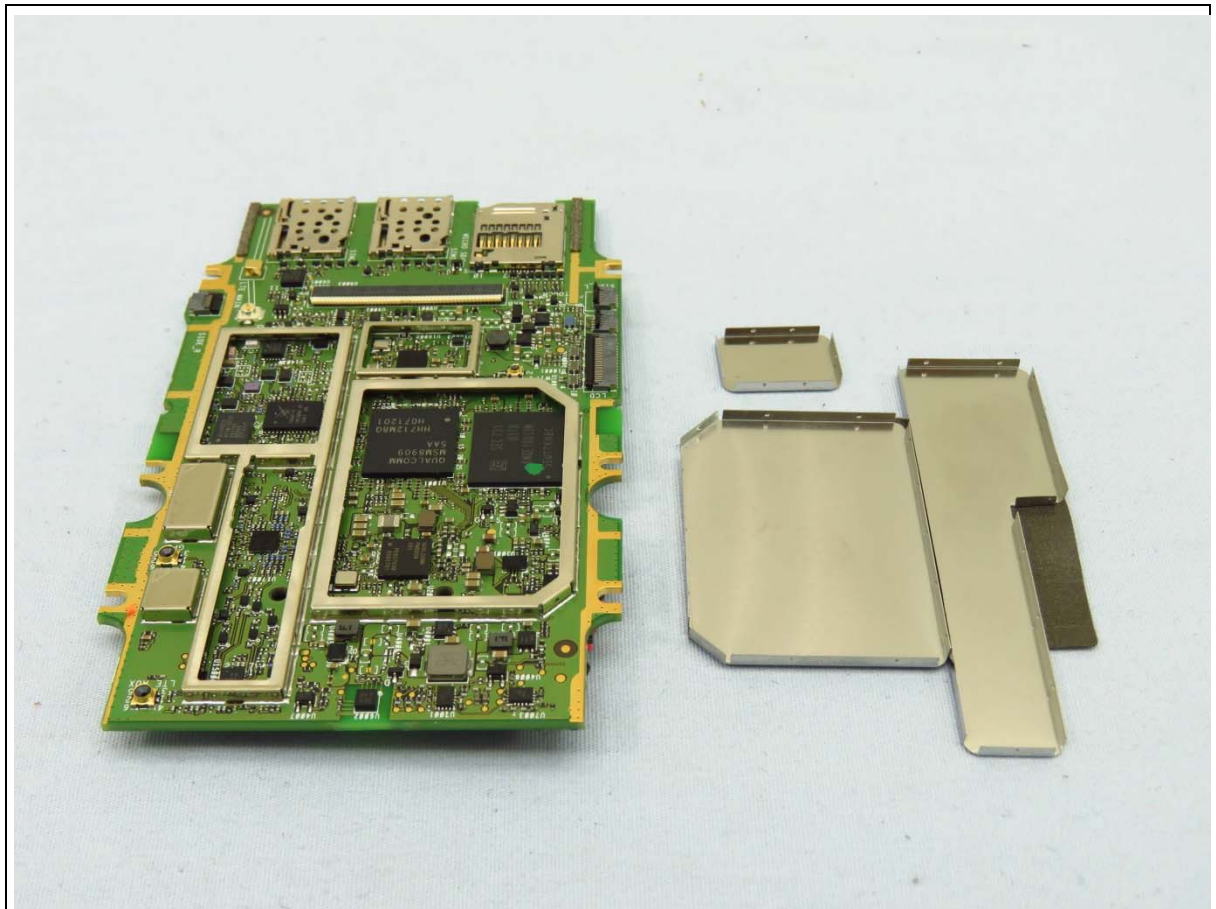
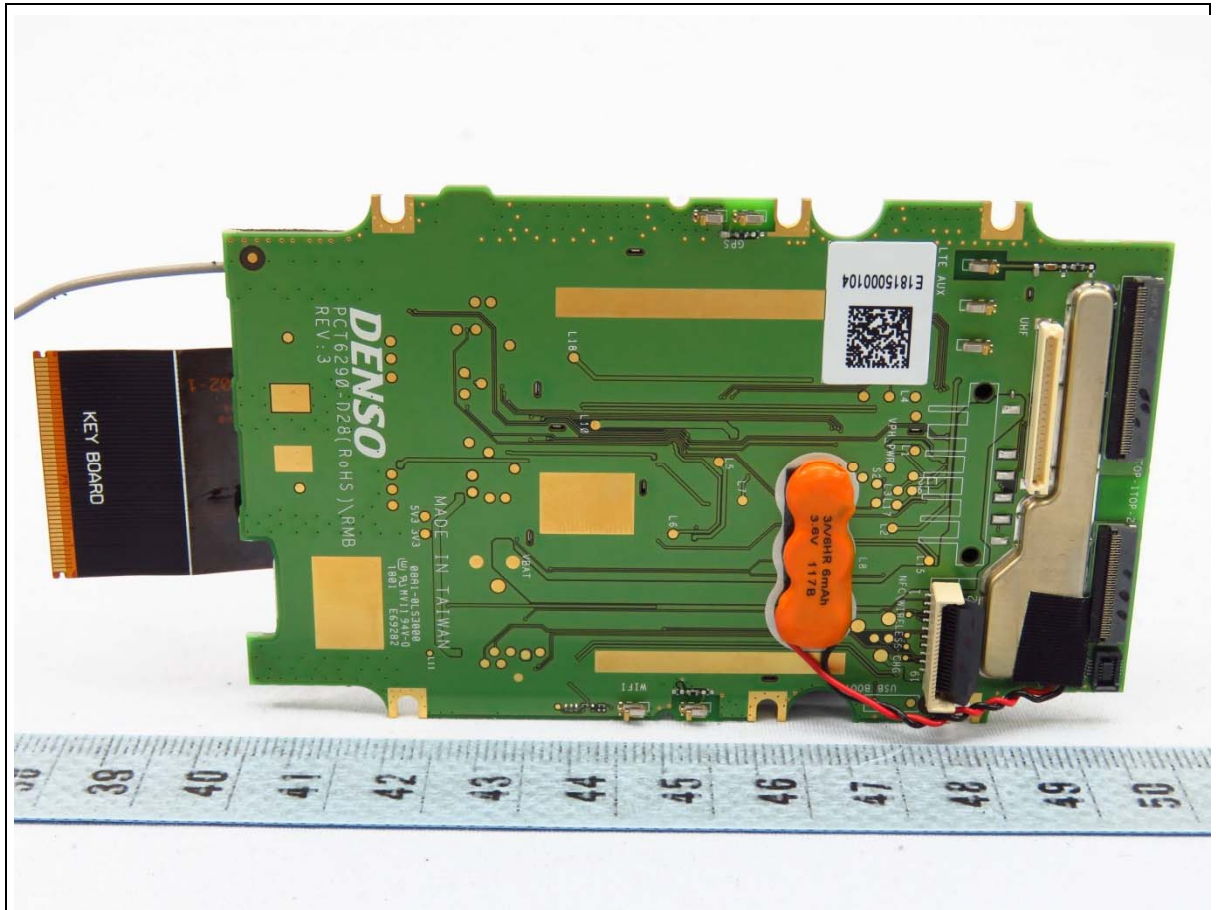




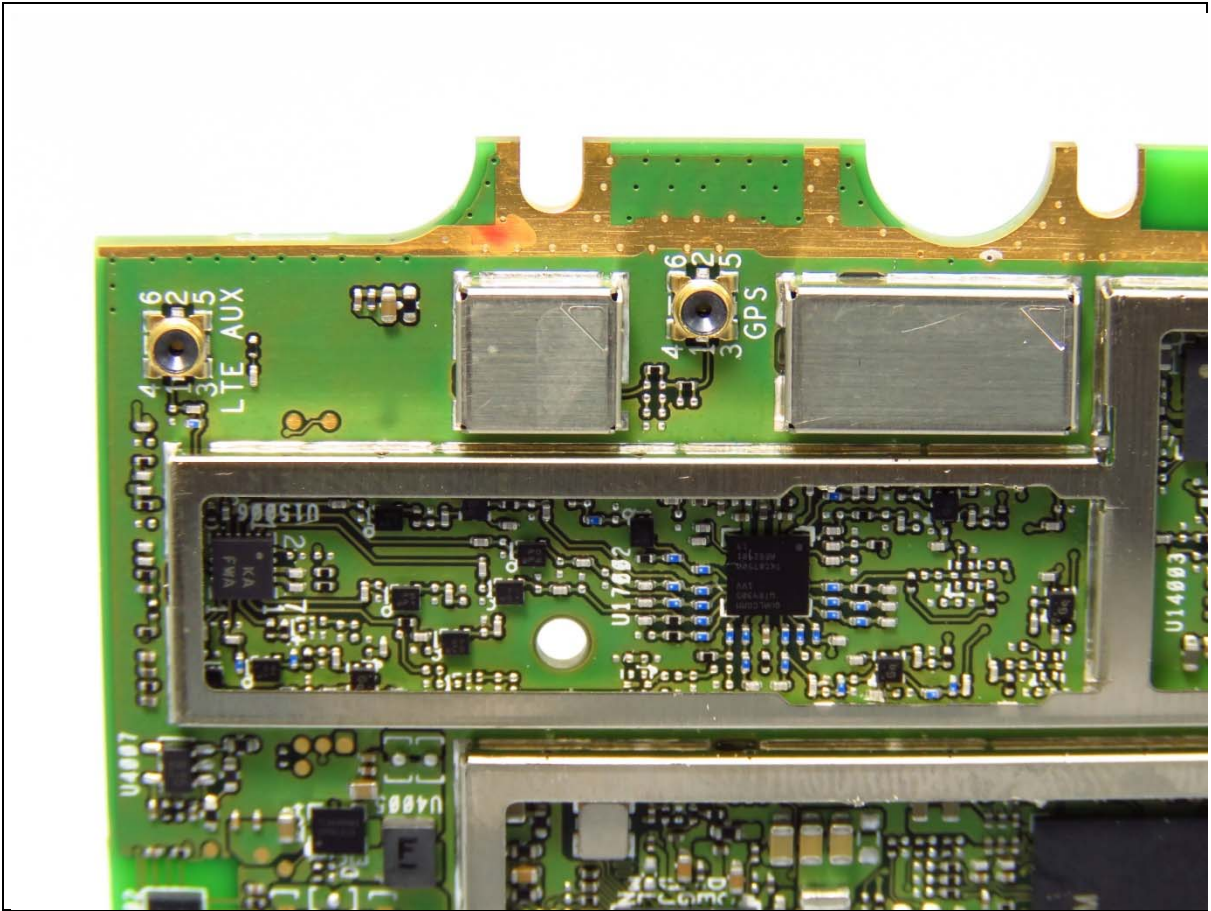
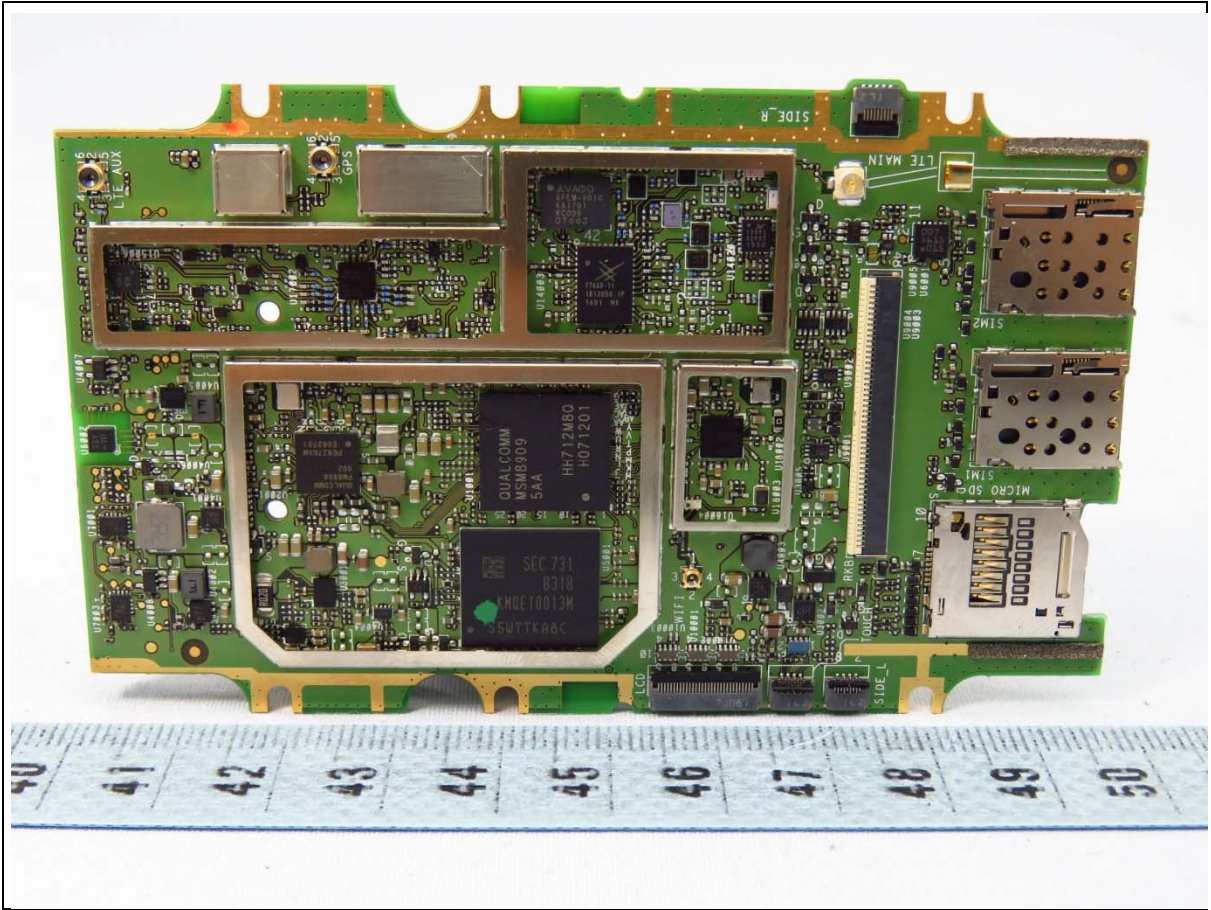




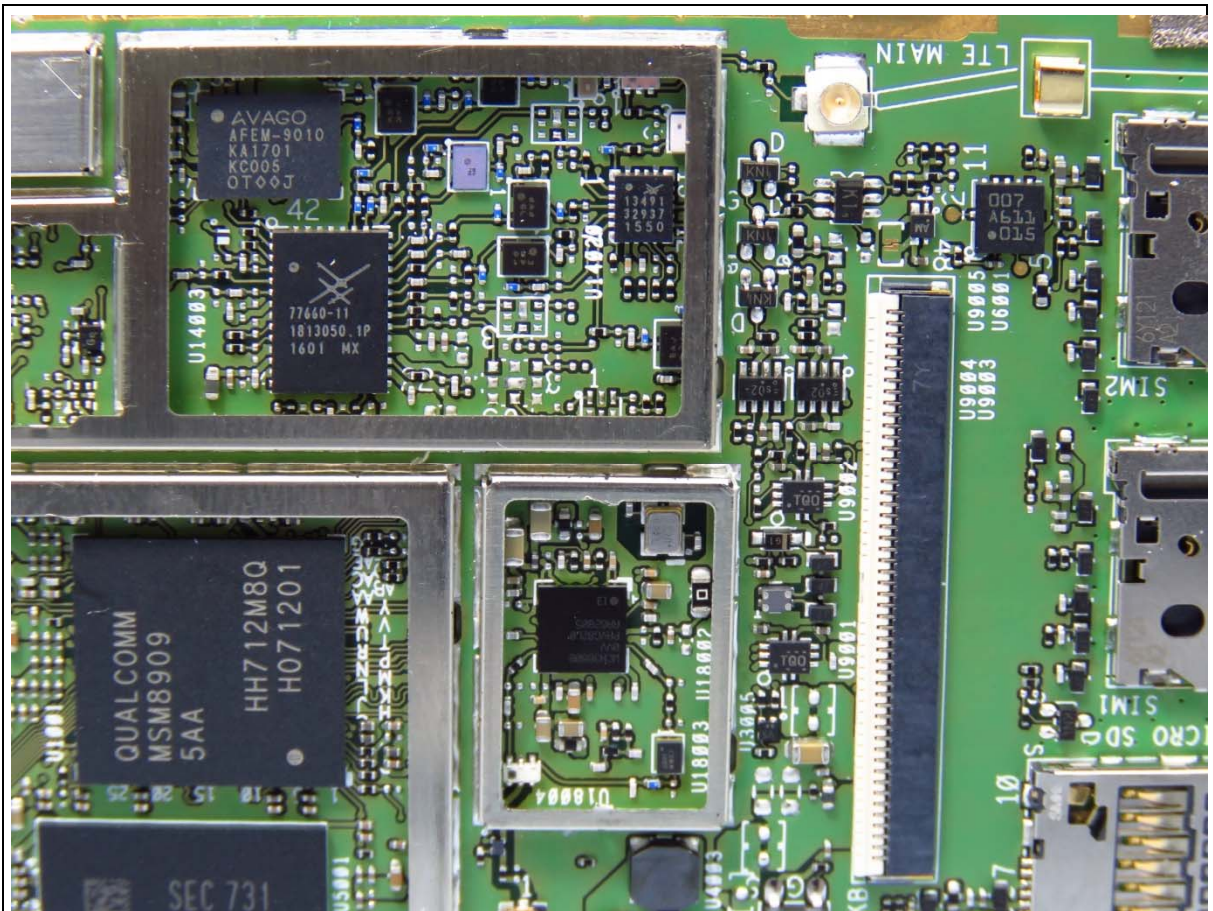
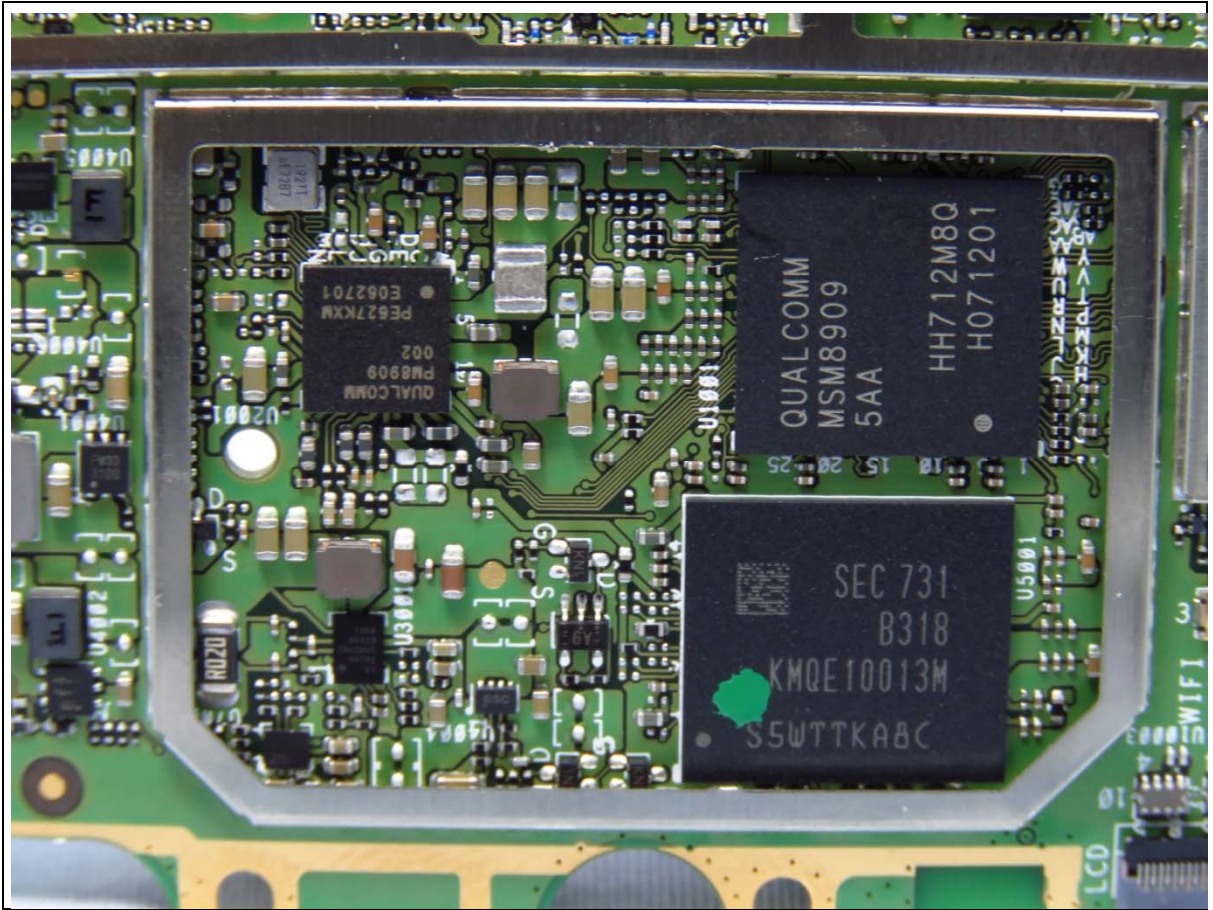










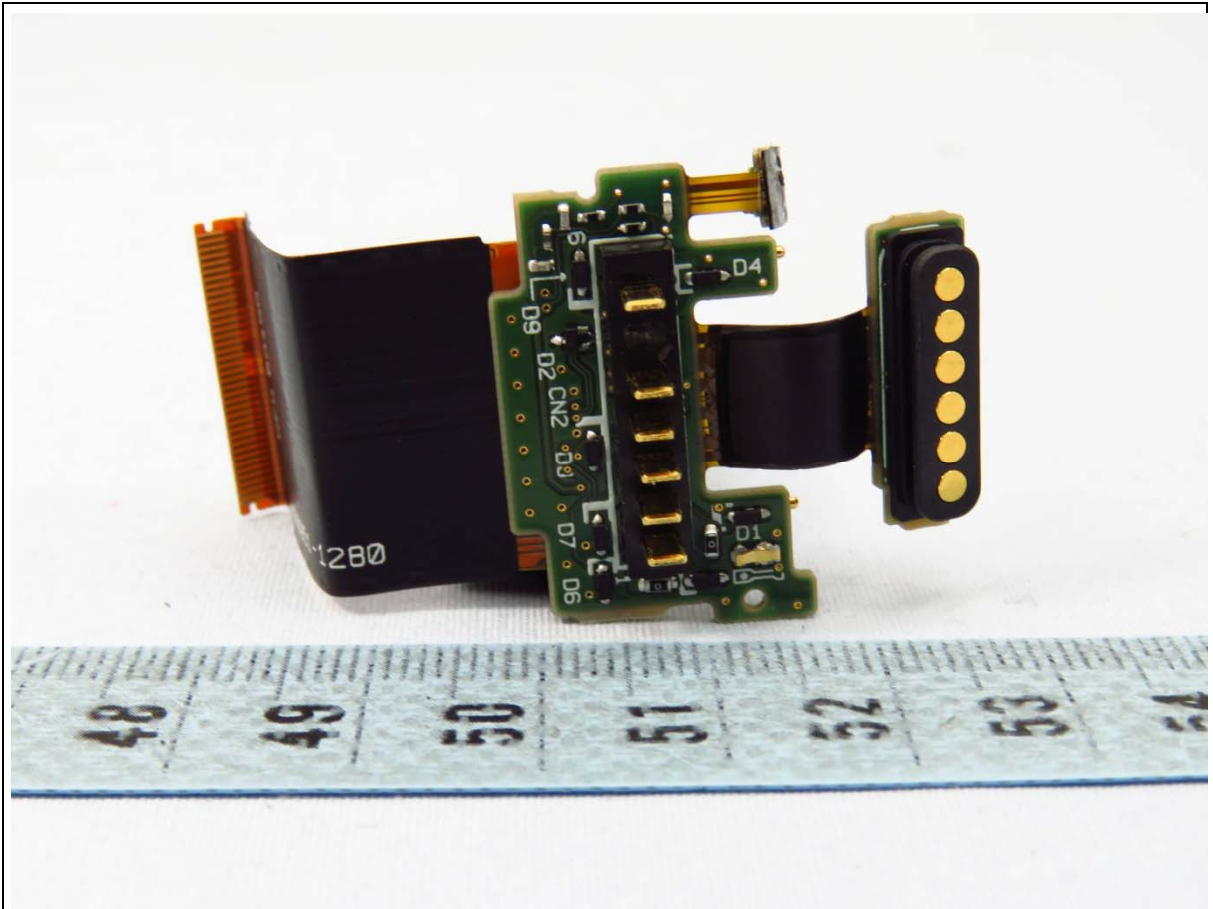
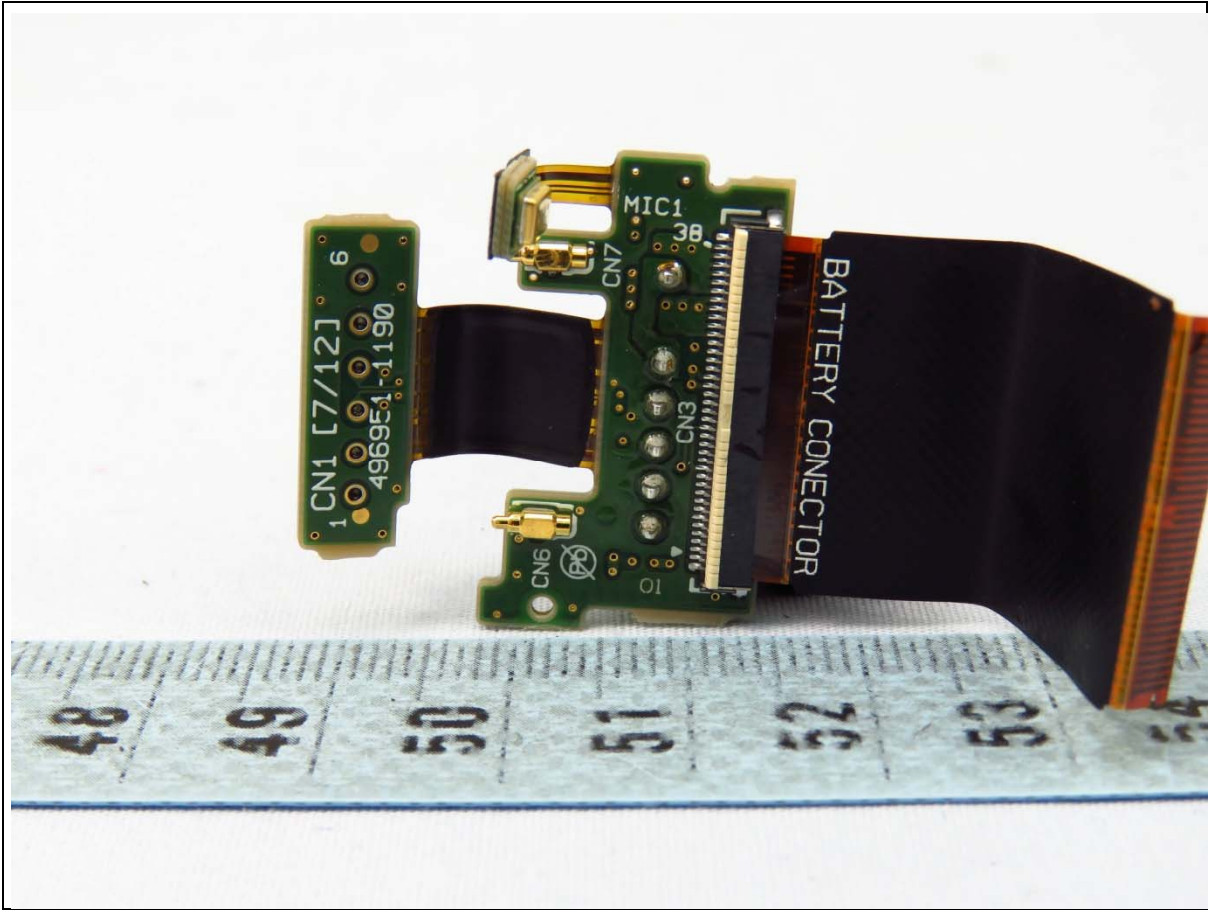










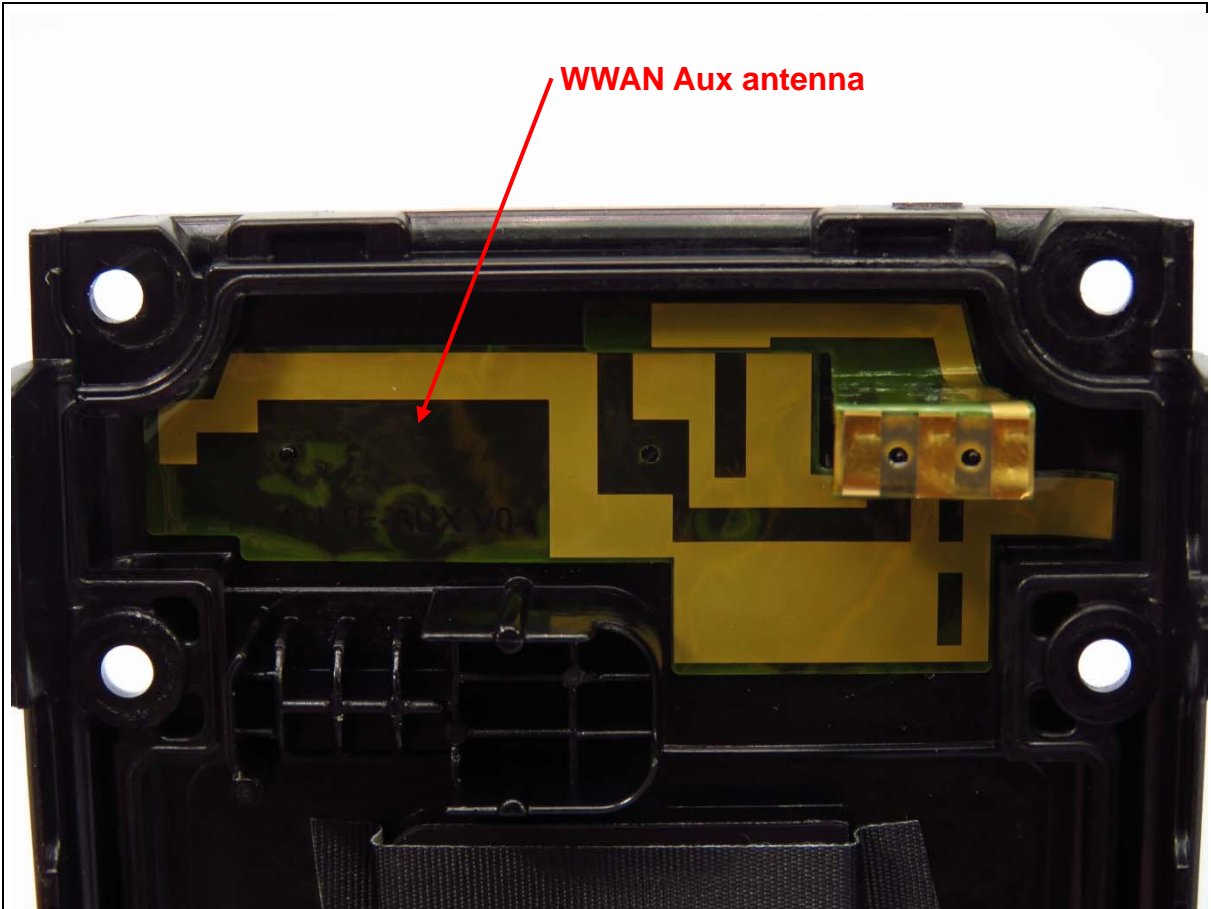
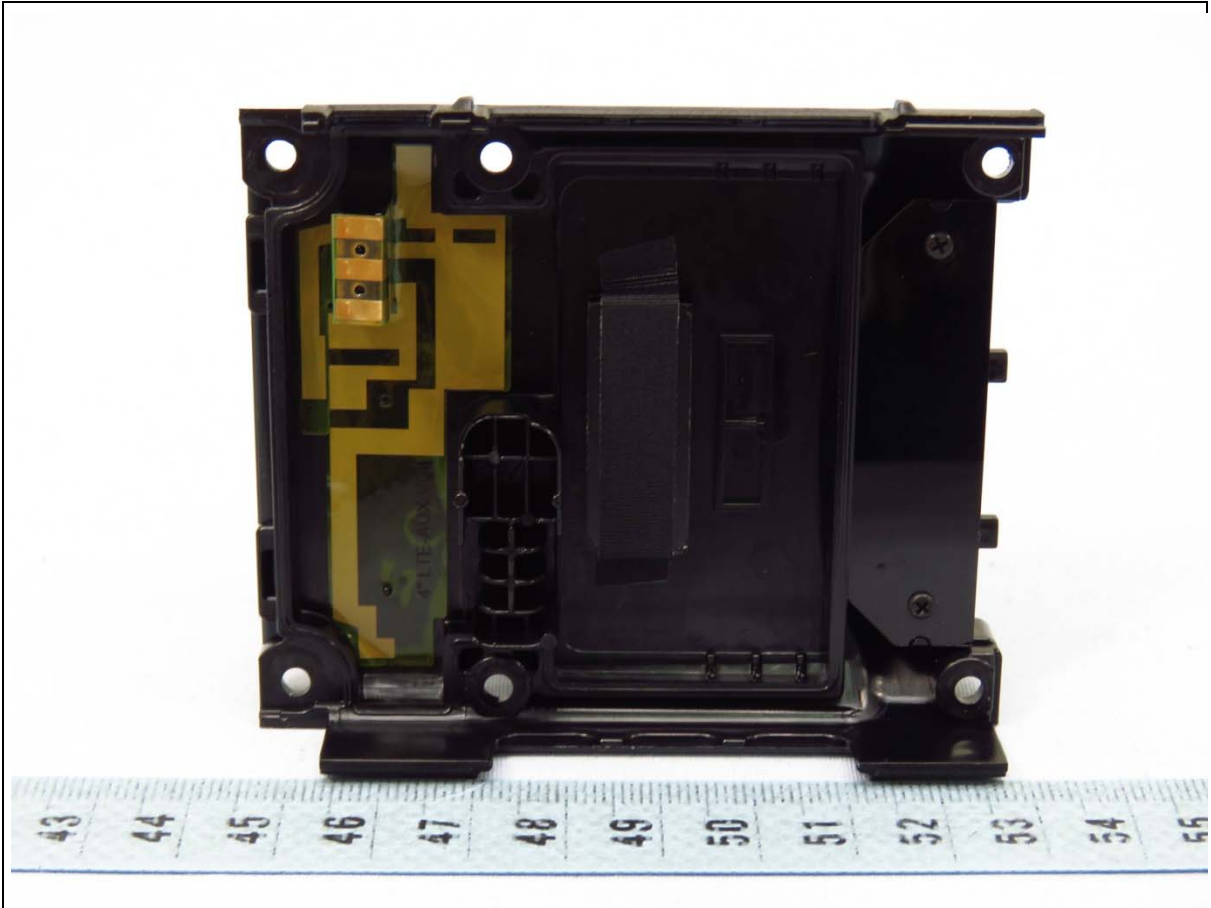


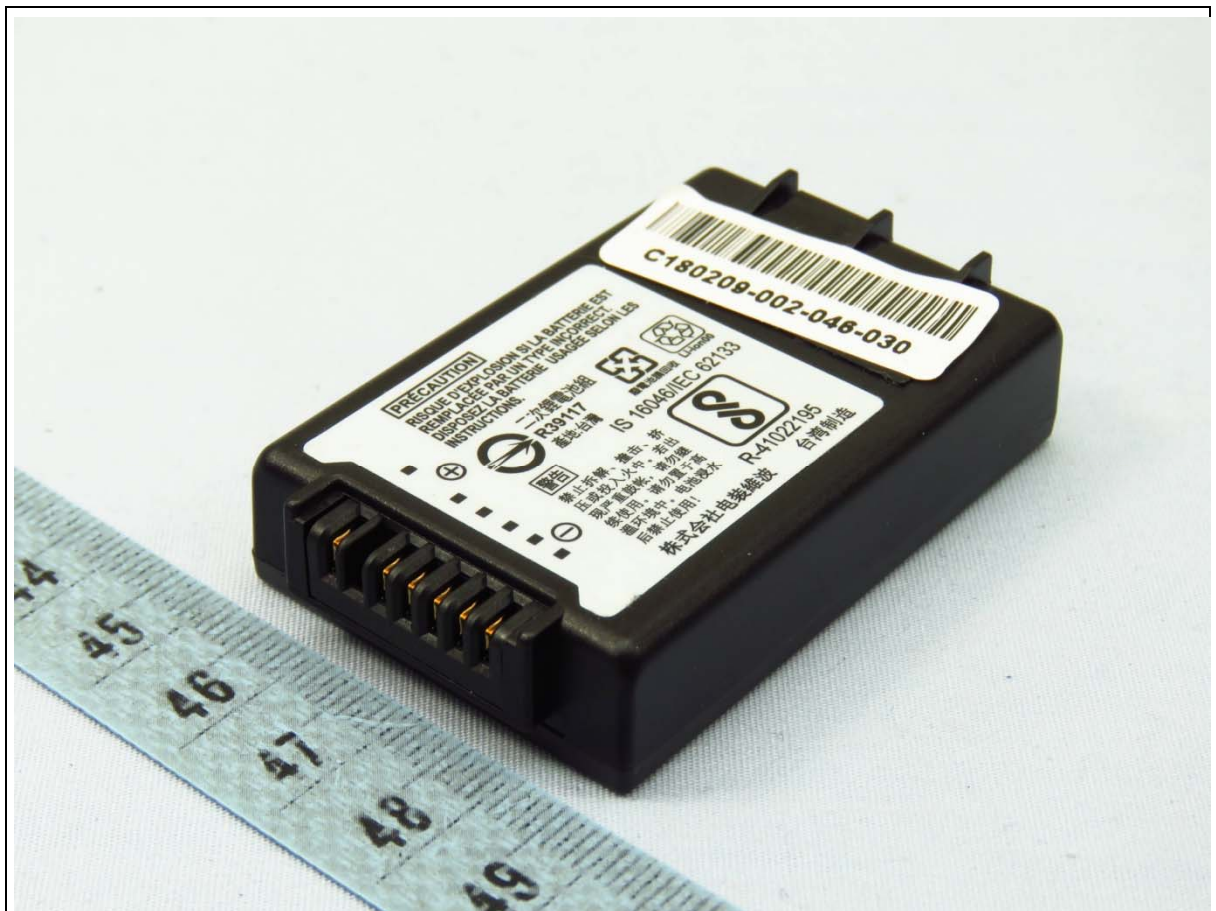














4964661246702779

**PRÉCAUTION**

RISQUE D'EXPLOSION SI LA BATTERIE EST REMPLACÉE PAR UN TYPE INCORRECT. DISPOSEZ LA BATTERIE USAGÉE SELON LES INSTRUCTIONS.



二次鋰電池組  
R39117  
產地:台灣



廢電池請回收



Li-ion00

**警告**

IS 16046/IEC 62133

禁止拆解、撞擊、擠壓或投入火中。若出現嚴重鼓脹，請勿繼續使用。請勿置于高溫環境中。電池浸水後禁止使用！



R-41022195

株式会社電裝維波

台灣製造

C180209-002-046-030

**DENSO**

型号/型號:BT-110LA  
(BP06-00028C)



496466-1246 鋰離子電池組  
Li-ion Battery 充電限制電壓: 4.2V

TIS 2217-2548  
DENSO Sales(Thailand)Co.,Ltd.

額定容量/額定容量: 2300mAh 8.5Wh 電壓/電壓: 3.7V



XZ100024-17007A

A/S 문의 : 82-31-340-1700

**CAUTION**

RISK OF EXPLOSION IF BATTERY IS REPLACED BY AN INCORRECT TYPE  
DISPOSE USED BATTERIES ACCORDING TO THE INSTRUCTIONS

**危険**

発熱・発火・破裂の恐れがありますので、分解や改造、端子の短絡、過熱や火中への投入、高温場所に放置しないでください。詳細は取扱説明書をお読みください。

**警告**

本電池如果更換不正確會有爆炸的危險請按照生產商說明書處理用過的電池

**警告**

本電池如果更換不正確會有爆炸的危險請依製造商說明書處理用過之電池

**경고**

이 전지는 교환 방법을 잘못하면 폭발할 우려가 있습니다. 제조 메이커의 취급 설명서를 참조해, 교환해 주세요. 製造商 ETI CA Battery Inc.



DATE OF FIRST USE

11CP5/34/50-2 2017.11 製造 수입자(한국)명 : 한국덴소판매주식회사  
DENSO WAVE INCORPORATED Assembled in Taiwan





**DENSO**



**BT-110L**

**Part Number: 496466-1250(BP06-00029C)**

**Rechargeable Li-ion Battery**

**3.7V --- 3450mAh 12.8Wh**



TIS 2217-2548

**CAUTION** RISK OF EXPLOSION IF BATTERY IS REPLACED BY AN INCORRECT TYPE  
DISPOSE USED BATTERYIES ACCORDING TO THE INSTRUCTIONS

**危険** 発熱・発火・破裂の恐れがありますので、分解や改造、端子の短絡、過熱や火中への投入、  
高温場所に放置しないでください。詳細は取扱説明書をお読みください。

**警告** 本電池如果更換不正確會有爆炸的危險請按照生產商說明書處理用過的電池

**警告** 本電池如果更換不正確會有爆炸的危險請依製造商說明書處理用過之電池

**경고** 이 전지는 교환 방법을 잘못하면 폭발할 우려가 있습니다. 제조 메이커의 취급  
설명서를 참조해, 교환해 주세요.

ETICA Battery Inc.

11CP5/34/50-3

수입자(한국)명 : 한국덴소판매주식회사

DENSO WAVE INCORPORATED

Assembled in Taiwan

C180102-009-055-048