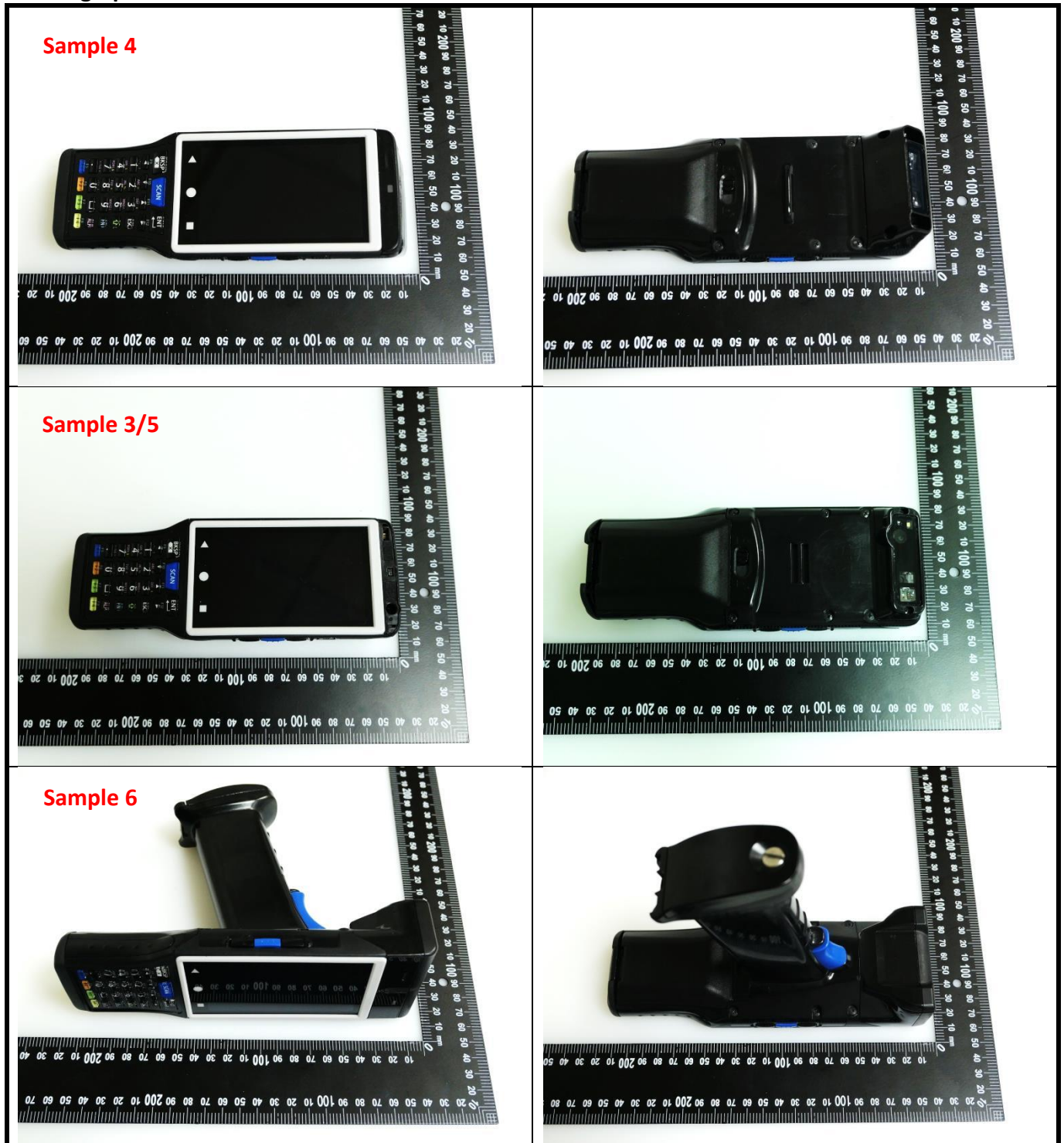




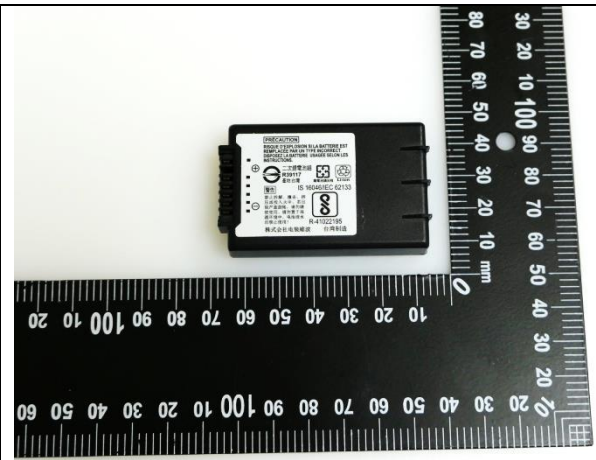
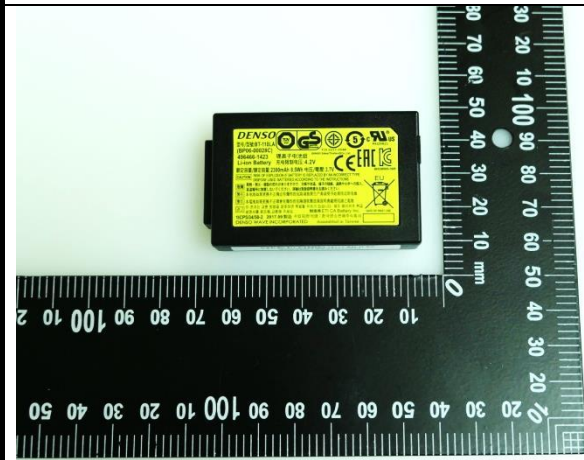
Appendix D. Photographs of EUT and Setup

<Photographs of EUT>

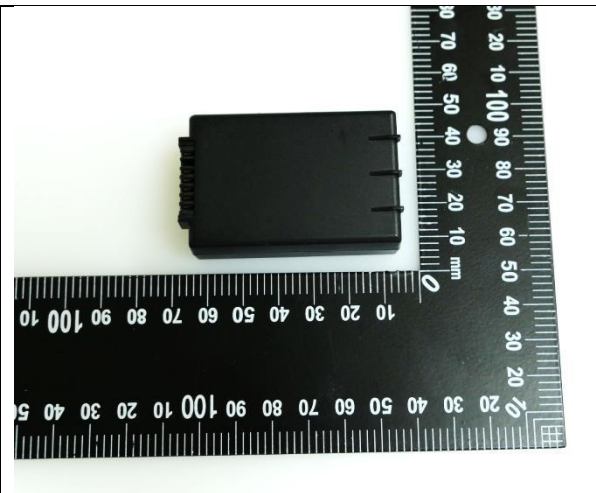
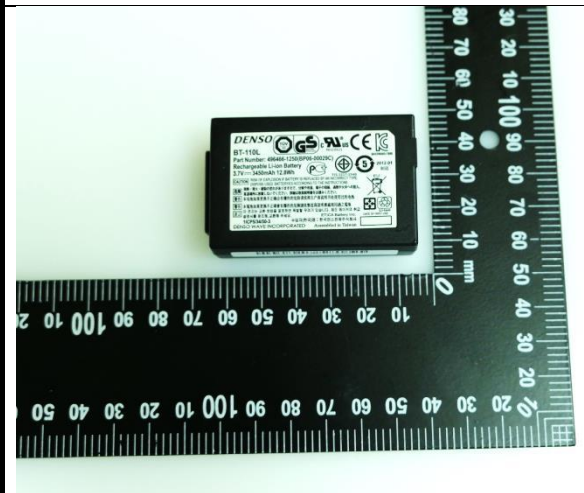


FCC SAR Test Report

Battery 1



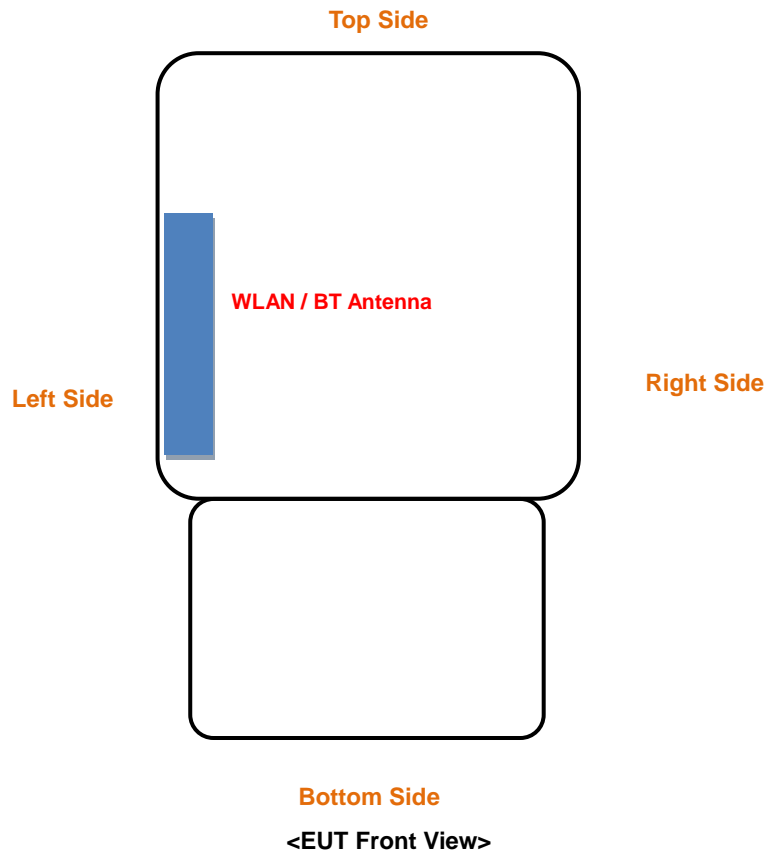
Battery 2



FCC SAR Test Report

<Antenna Location>

Sample 3/5

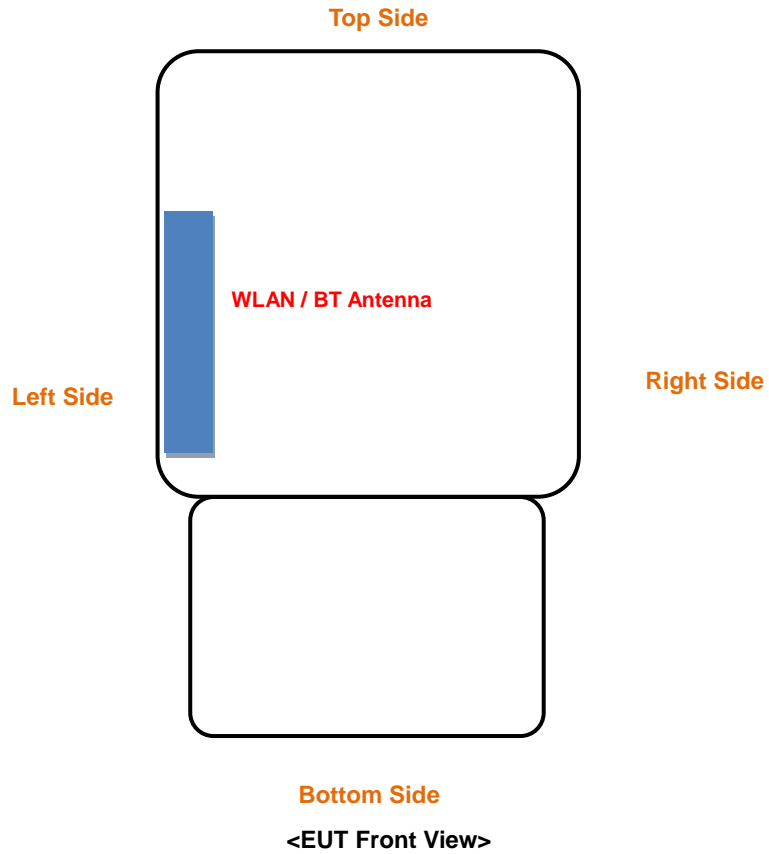


The separation distance for antenna to edge:

Antenna	To Top Side (mm)	To Bottom Side (mm)	To Left Side (mm)	To Right Side (mm)
BT / WLAN-0	59.1	86.9	5.8	61.4

FCC SAR Test Report

Sample 4



The separation distance for antenna to edge:

Antenna	To Top Side (mm)	To Bottom Side (mm)	To Left Side (mm)	To Right Side (mm)
BT / WLAN-0	64.7	61.4	5.8	86.9

FCC SAR Test Report

Sample 6

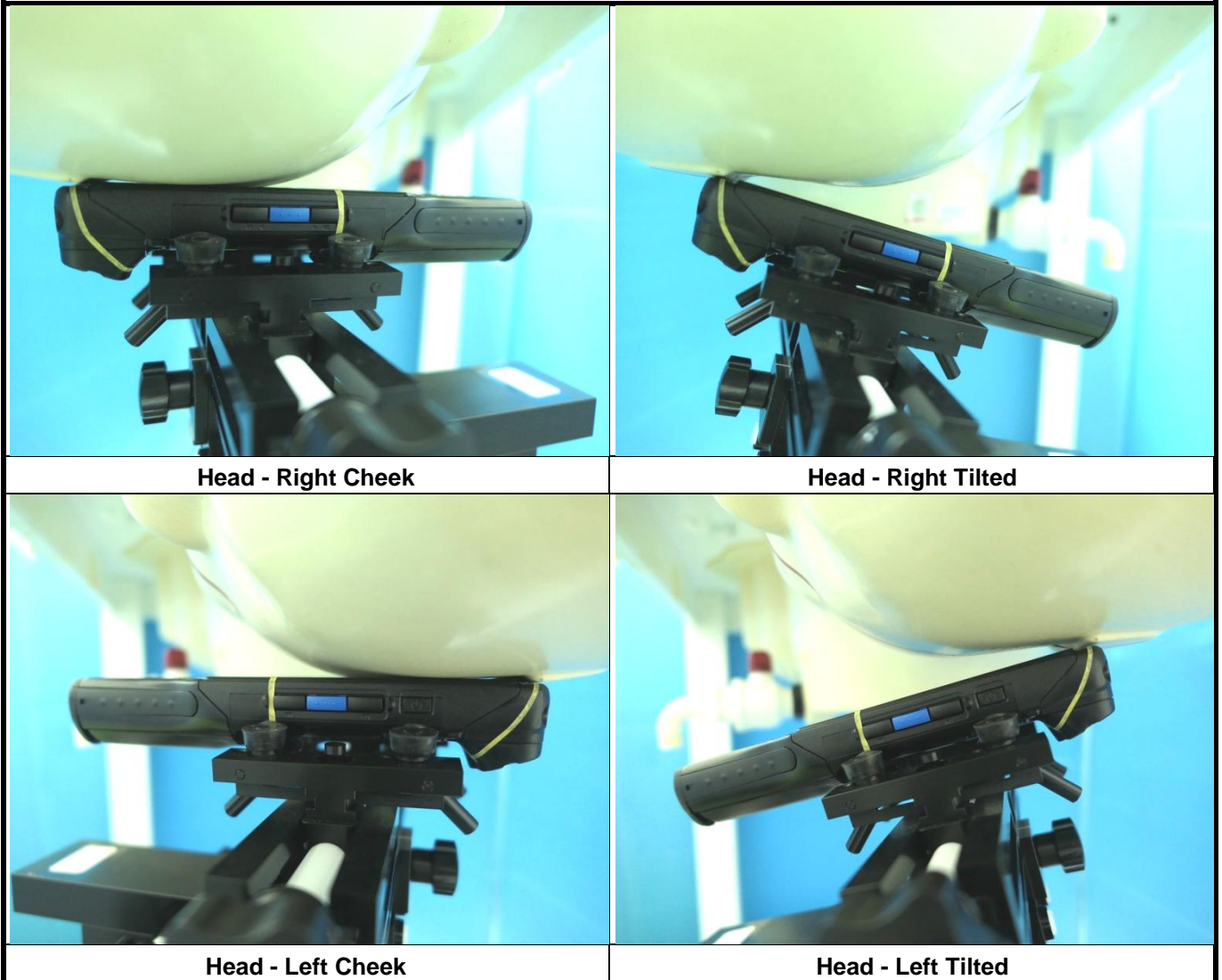


The separation distance for antenna to edge:

Antenna	To Finger (mm)
BT / WLAN-0	45

<Photographs of SAR Setup>

Sample 3/5+ Battery 1



FCC SAR Test Report

Sample 3+ Battery 2



Head - Left Cheek

Sample 3/5 + Battery 1



Body worn - Front Face of EUT at 15 mm



Body worn - Rear Face of EUT at 15 mm

FCC SAR Test Report

Sample 3+ Battery 2



Body worn - Rear Face of EUT at 15 mm

Sample 4 + Battery 1



Body worn - Front Face of EUT at 15 mm



Body worn - Rear Face of EUT at 15 mm

FCC SAR Test Report

Sample 4 + Battery 2



Body worn - Front Face of EUT at 15 mm



Body worn - Rear Face of EUT at 15 mm

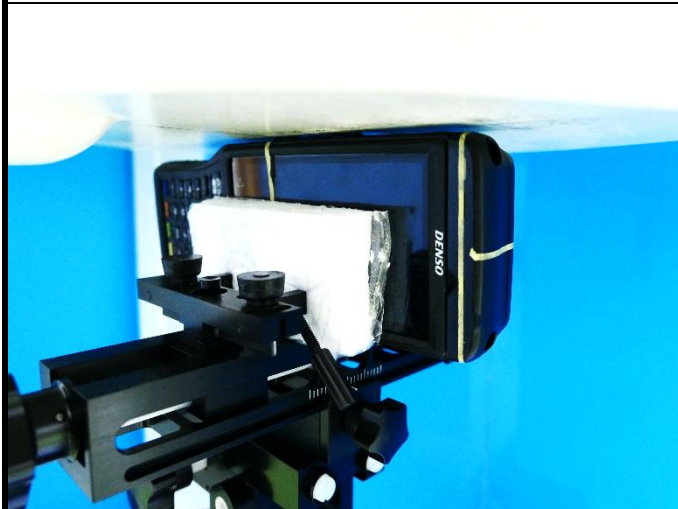
Sample 3/5 + Battery 1



Product Specific –Front Face of EUT at 0 mm



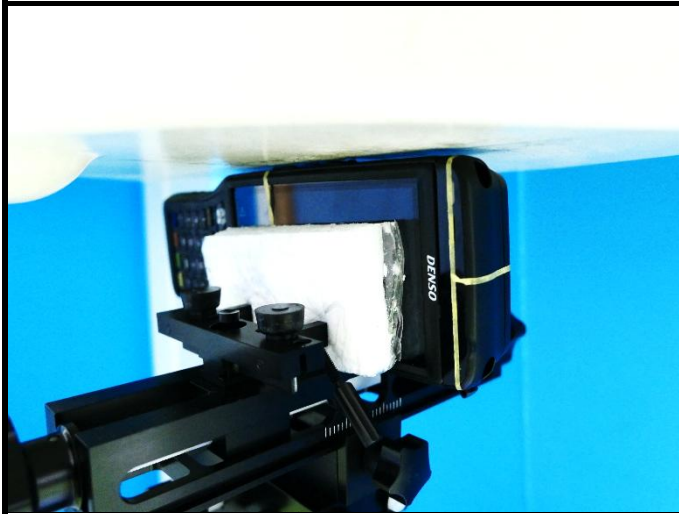
Product Specific - Rear Face of EUT at 0 mm



Product Specific– Left side of EUT at 0 mm

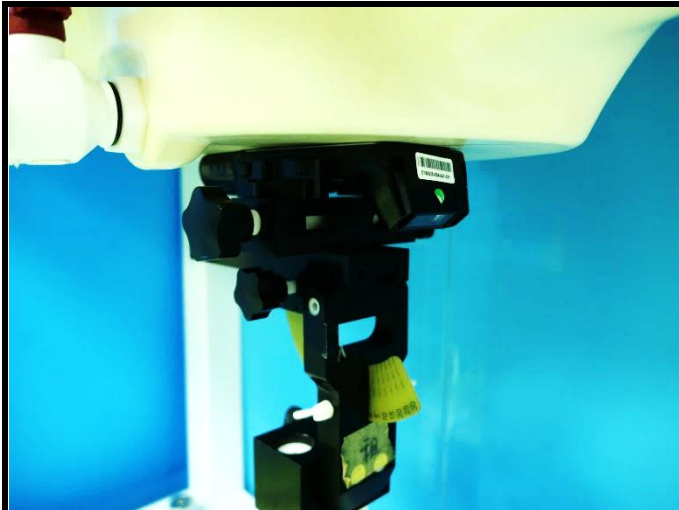
FCC SAR Test Report

Sample 3 + Battery 2



Product Specific - Left of EUT at 0 mm

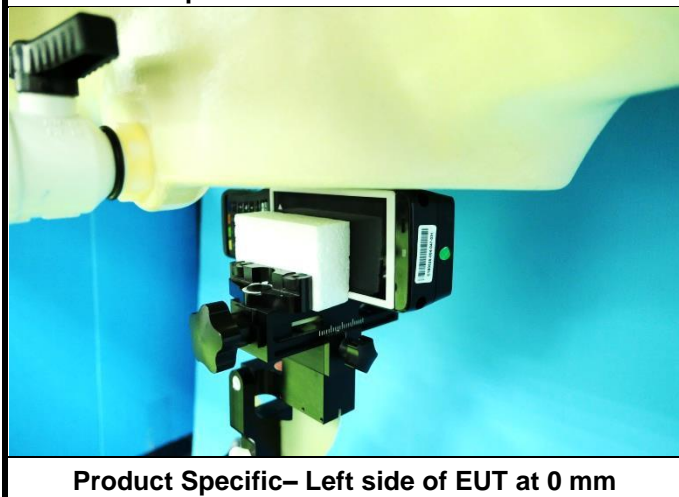
Sample 4 + Battery 1



Product Specific - Front Face of EUT at 0 mm



Product Specific - Rear Face of EUT at 0 mm



Product Specific - Left side of EUT at 0 mm

FCC SAR Test Report

Sample 4 + Battery 2



Product Specific- Left side of EUT at 10 mm