

**DENSO**



**UL**®  
MH29921

**BT-110L**

**Part Number: 496466-1250(BP06-00029C)**

**Rechargeable Li-ion Battery**

**3.7V --- 3450mAh 12.8Wh**



TIS 2217-2548

**CAUTION** RISK OF EXPLOSION IF BATTERY IS REPLACED BY AN INCORRECT TYPE  
DISPOSE USED BATTERYIES ACCORDING TO THE INSTRUCTIONS

**危険** 発熱・発火・破裂の恐れがありますので、分解や改造、端子の短絡、過熱や火中への投入、  
高温場所に放置しないでください。詳細は取扱説明書をお読みください。

**警告** 本電池如果更換不正確會有爆炸的危險請按照生產商說明書處理用過的電池

**警告** 本電池如果更換不正確會有爆炸的危險請依製造商說明書處理用過之電池

**경고** 이 전지는 교환 방법을 잘못하면 폭발할 우려가 있습니다. 제조 메이커의 취급  
설명서를 참조해, 교환해 주세요.

ETICA Battery Inc.

11CP5/34/50-3

수입자(한국)명 : 한국덴소판매주식회사

DENSO WAVE INCORPORATED

Assembled in Taiwan

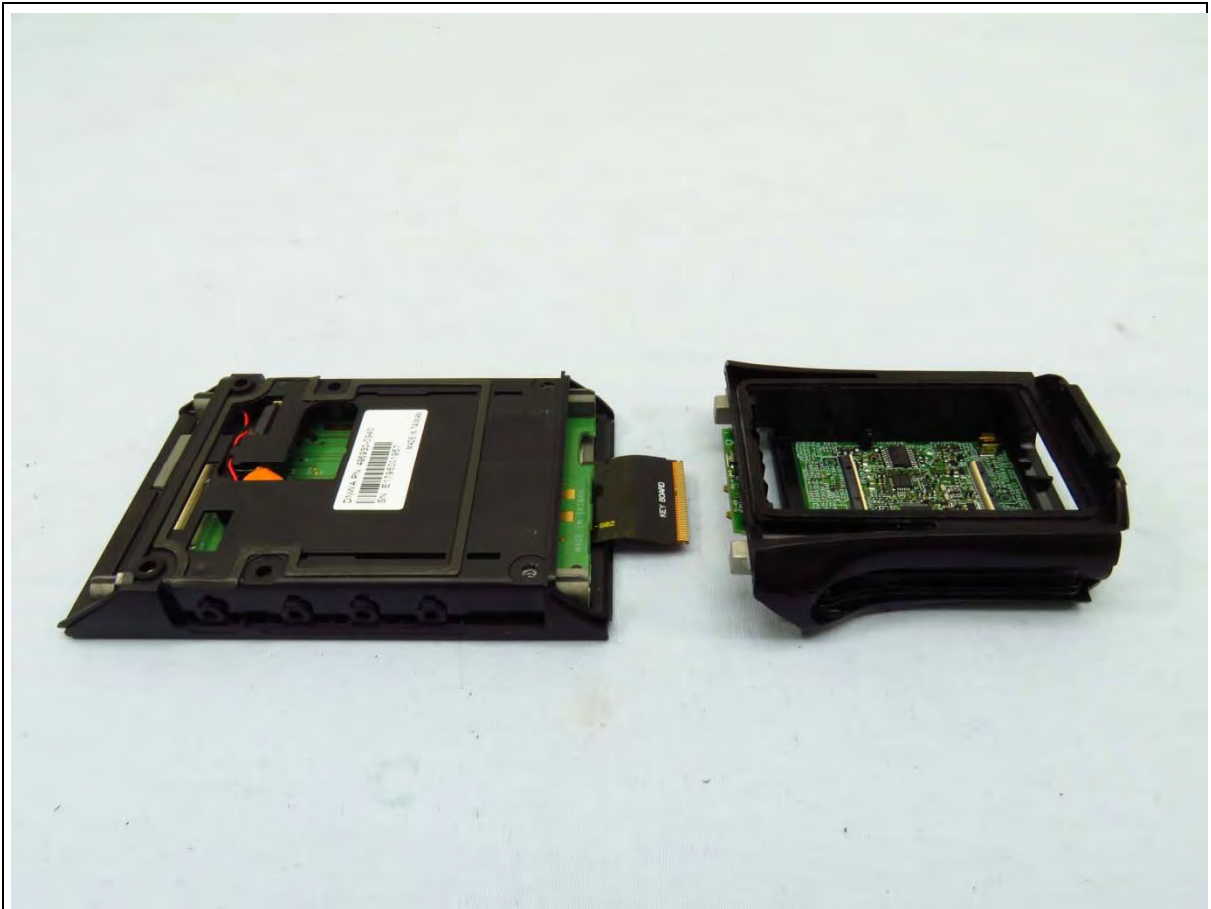
C180102-009-055-048

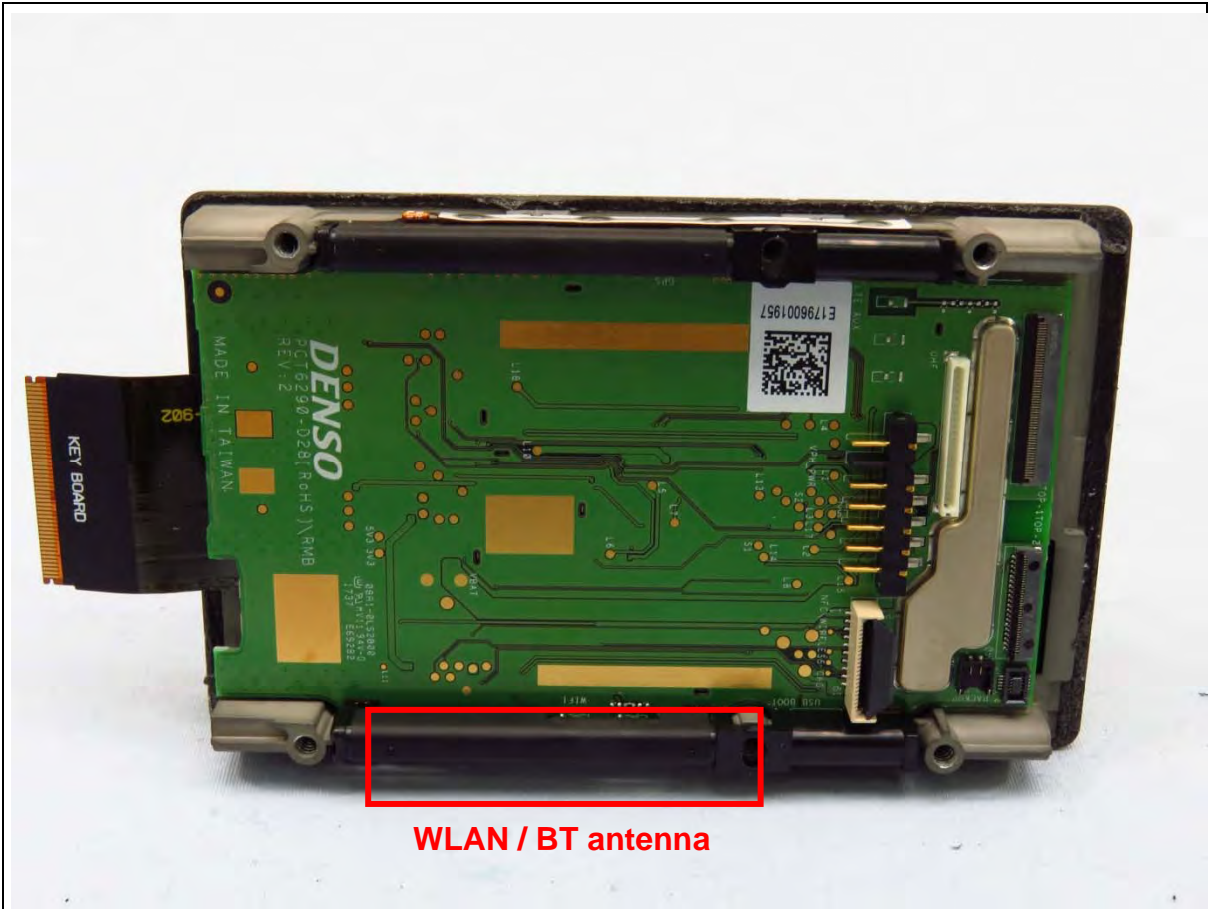




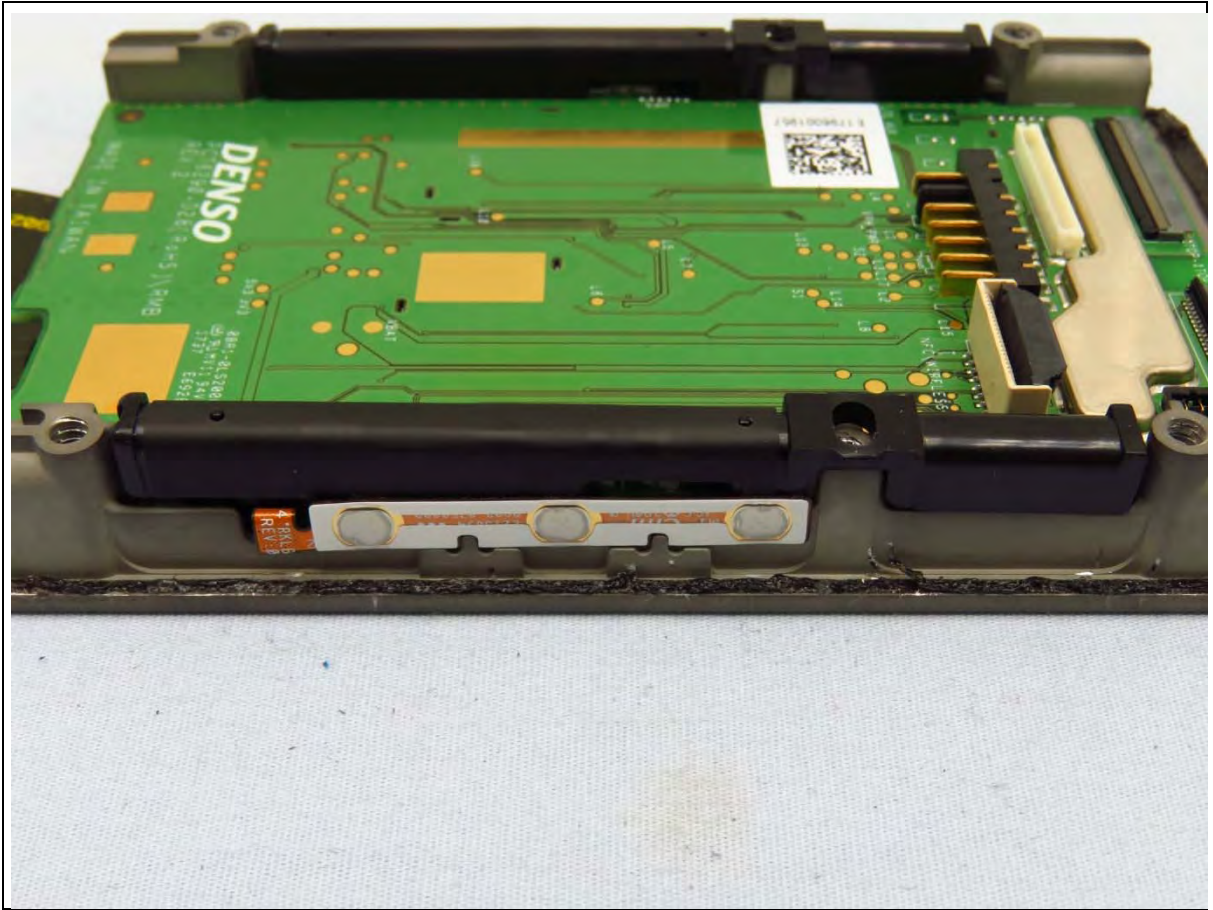




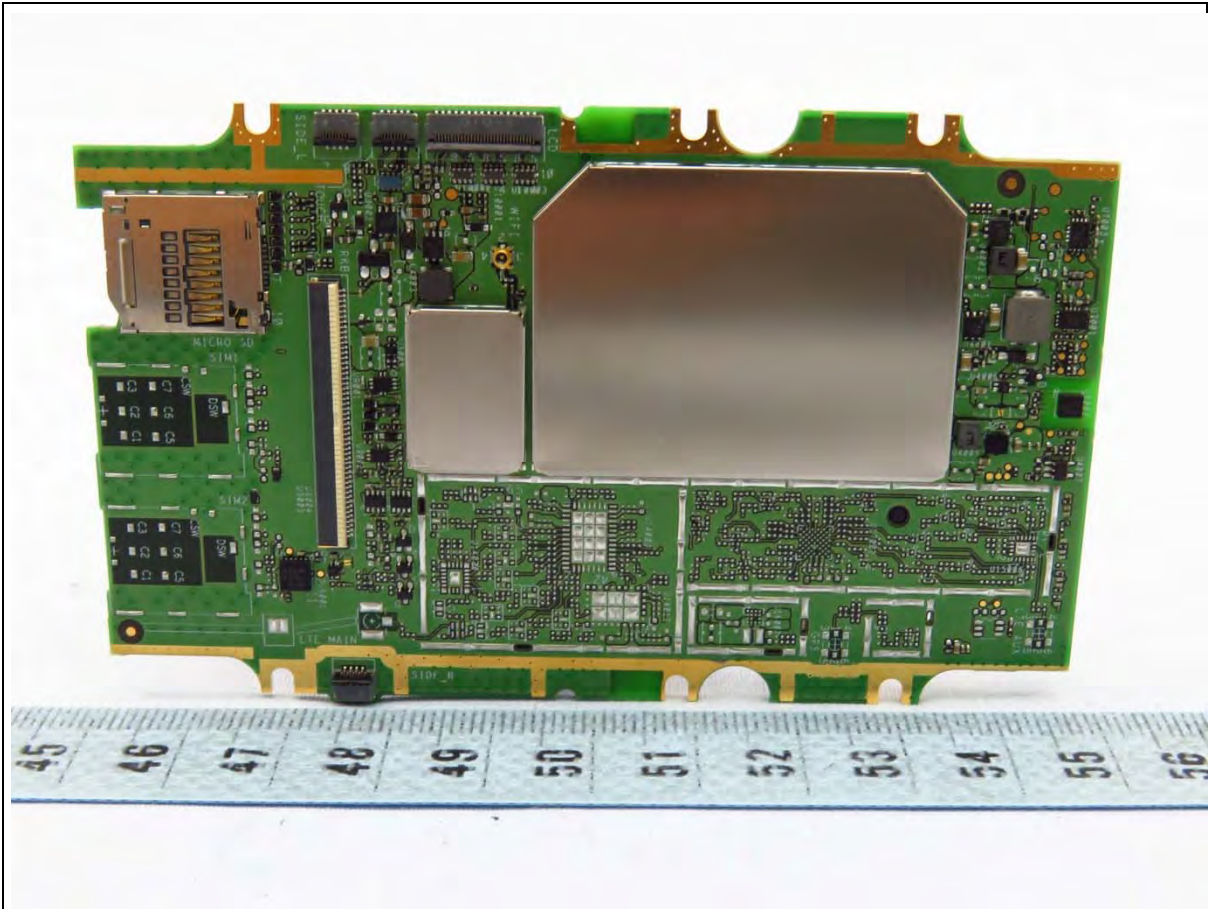




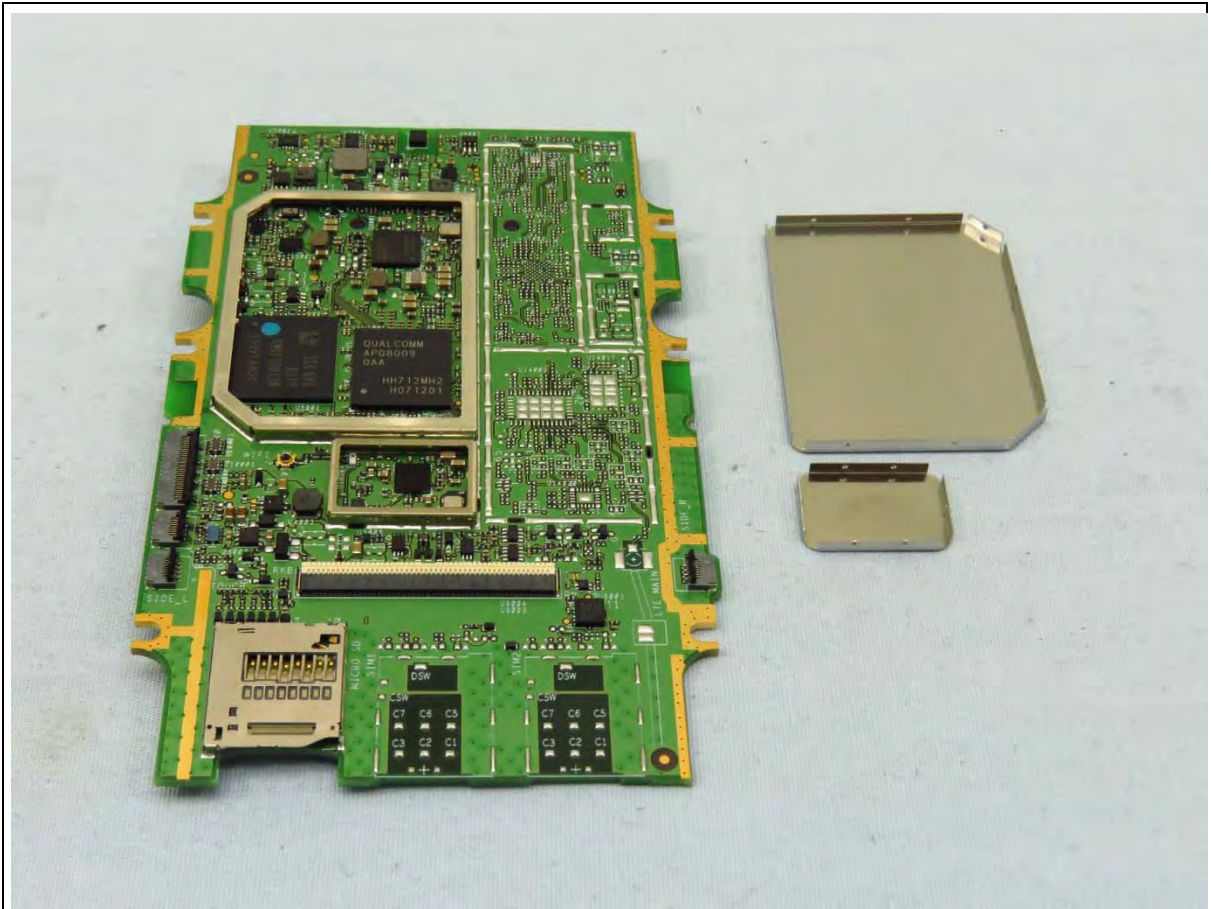
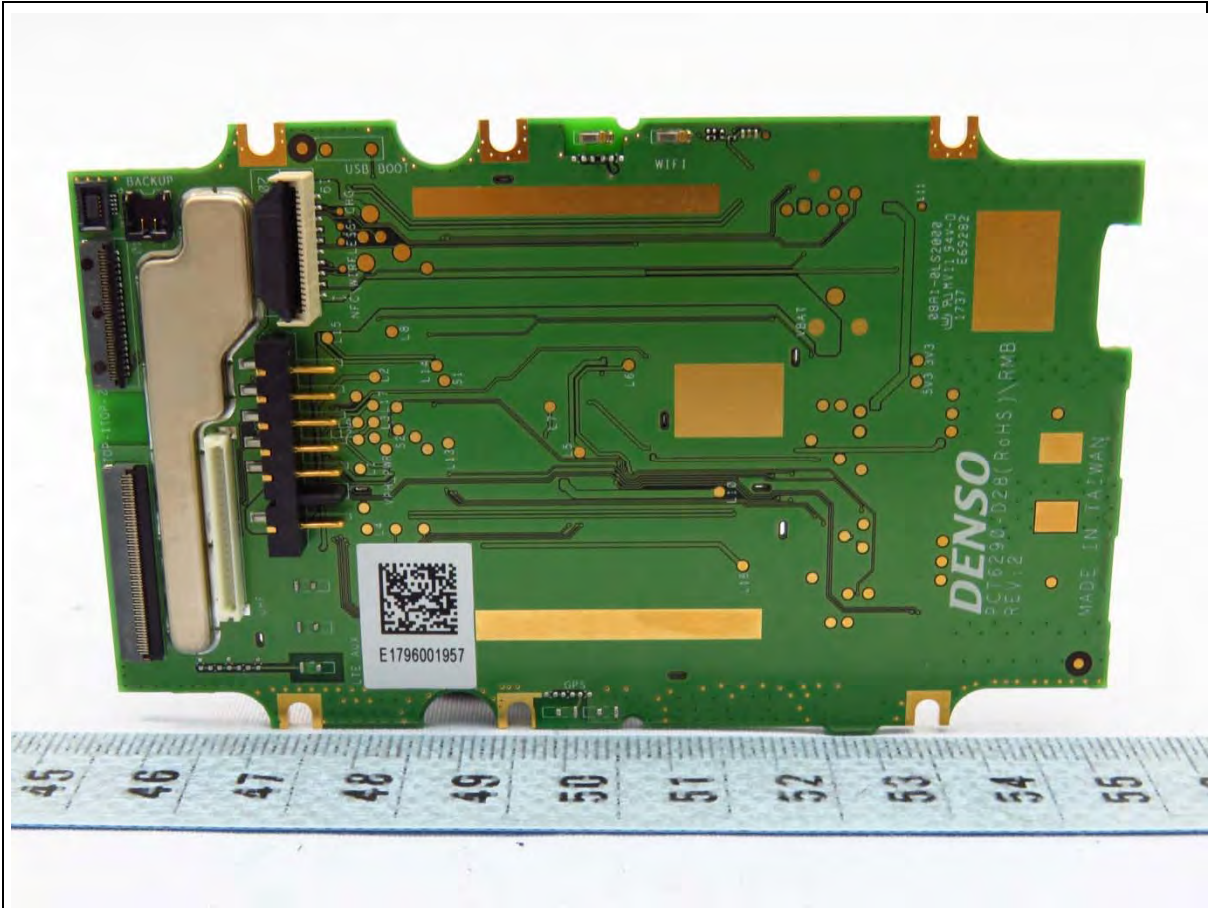




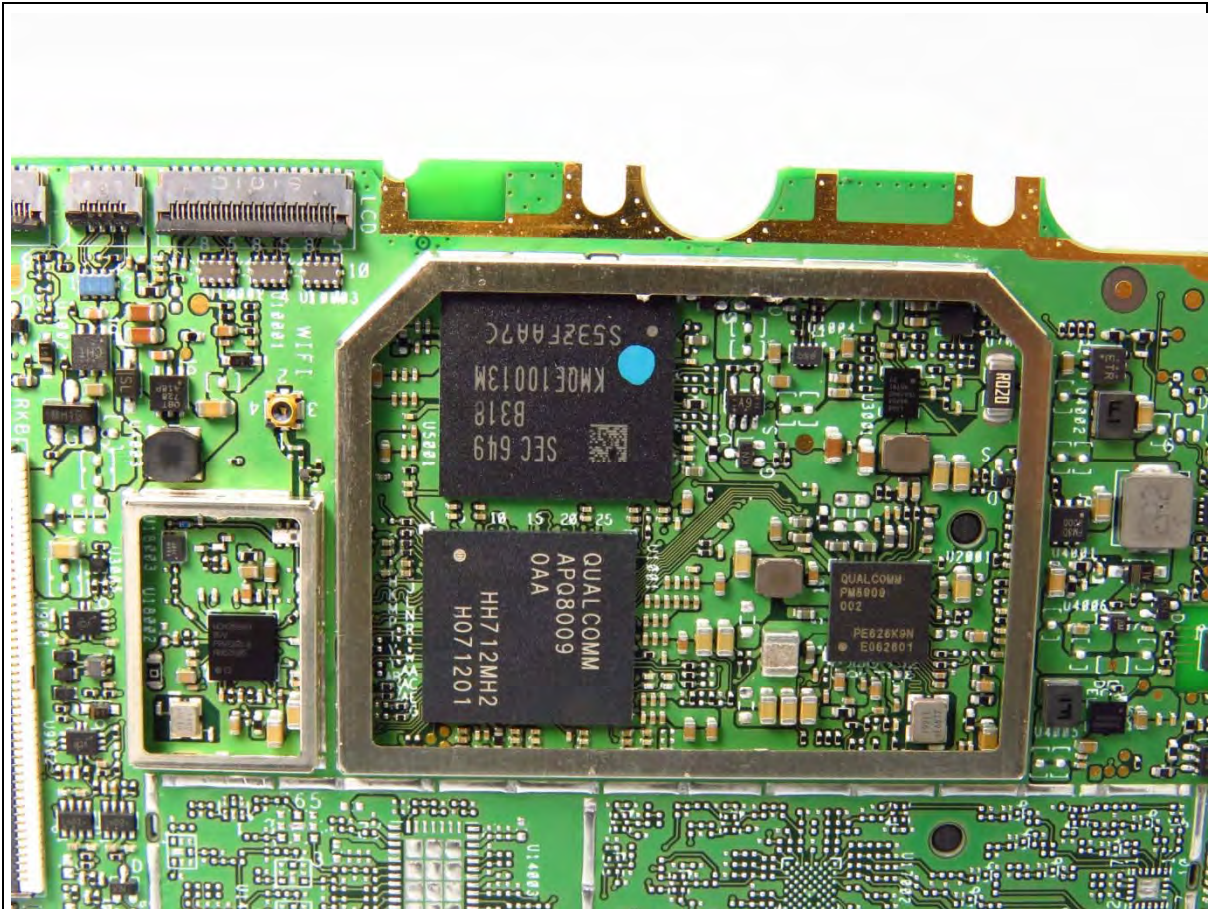
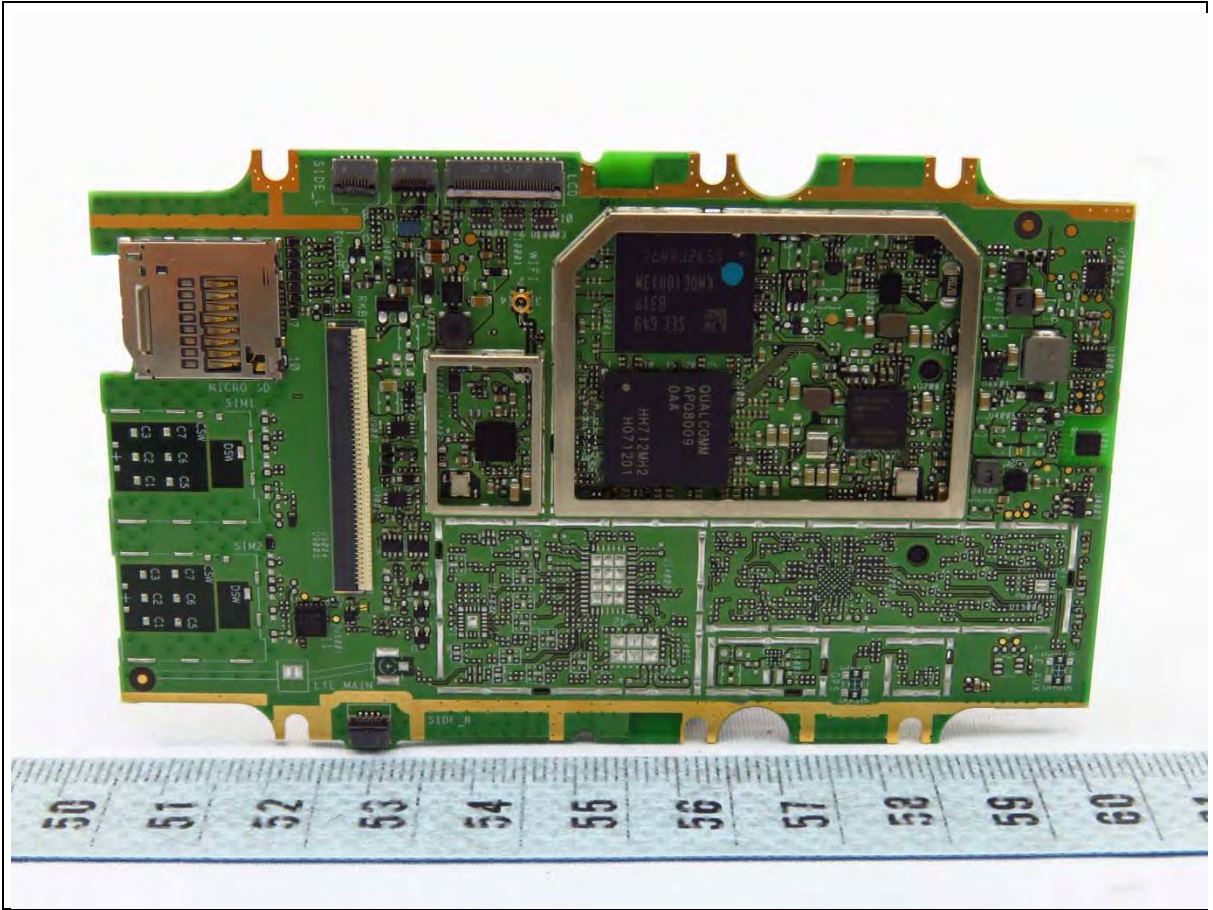




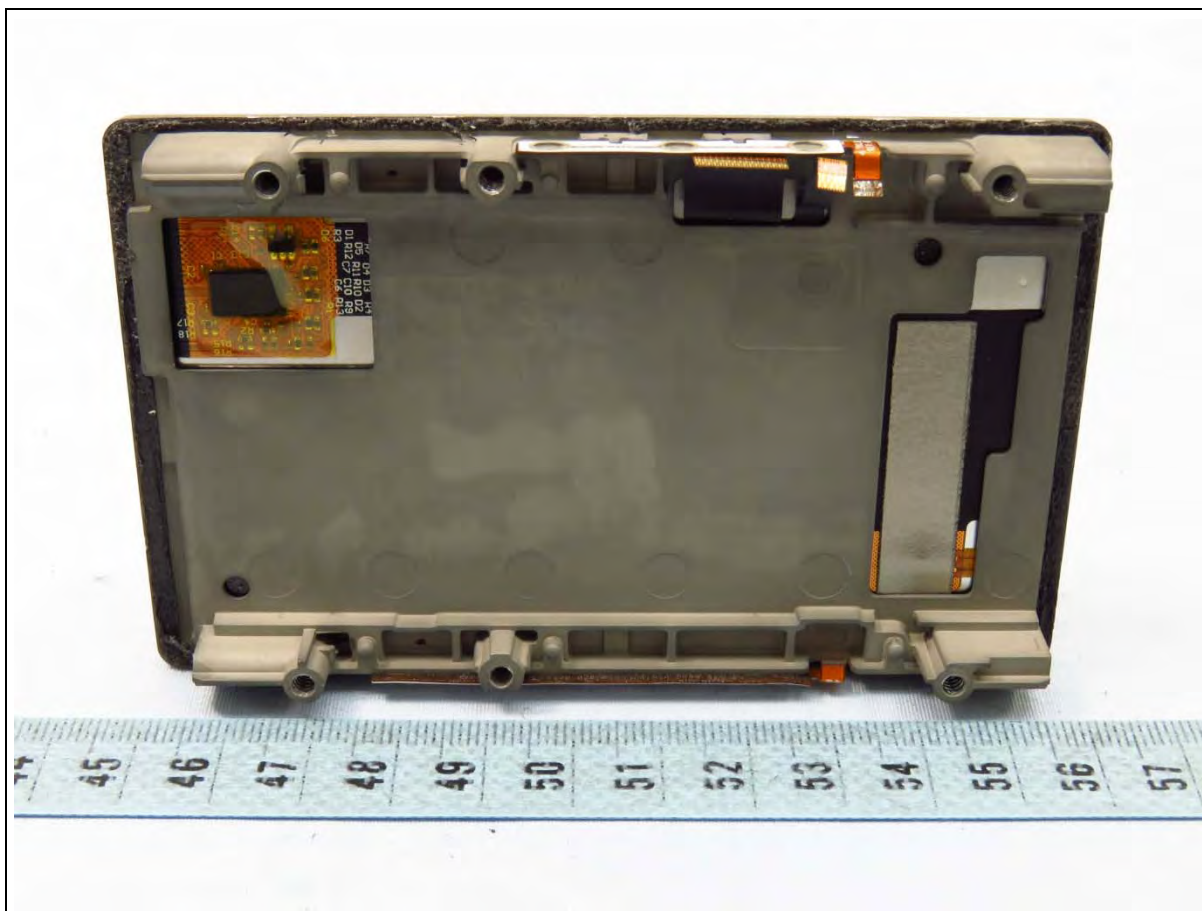
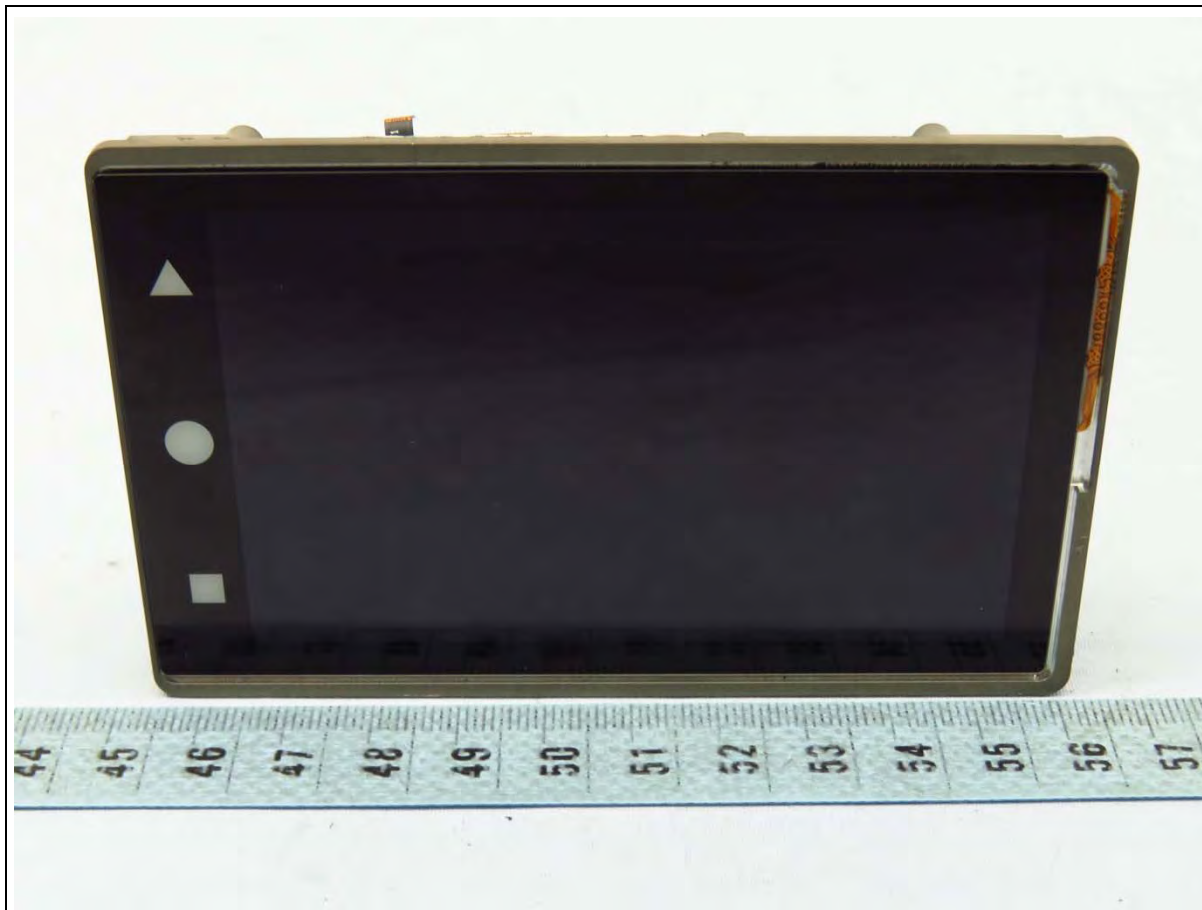


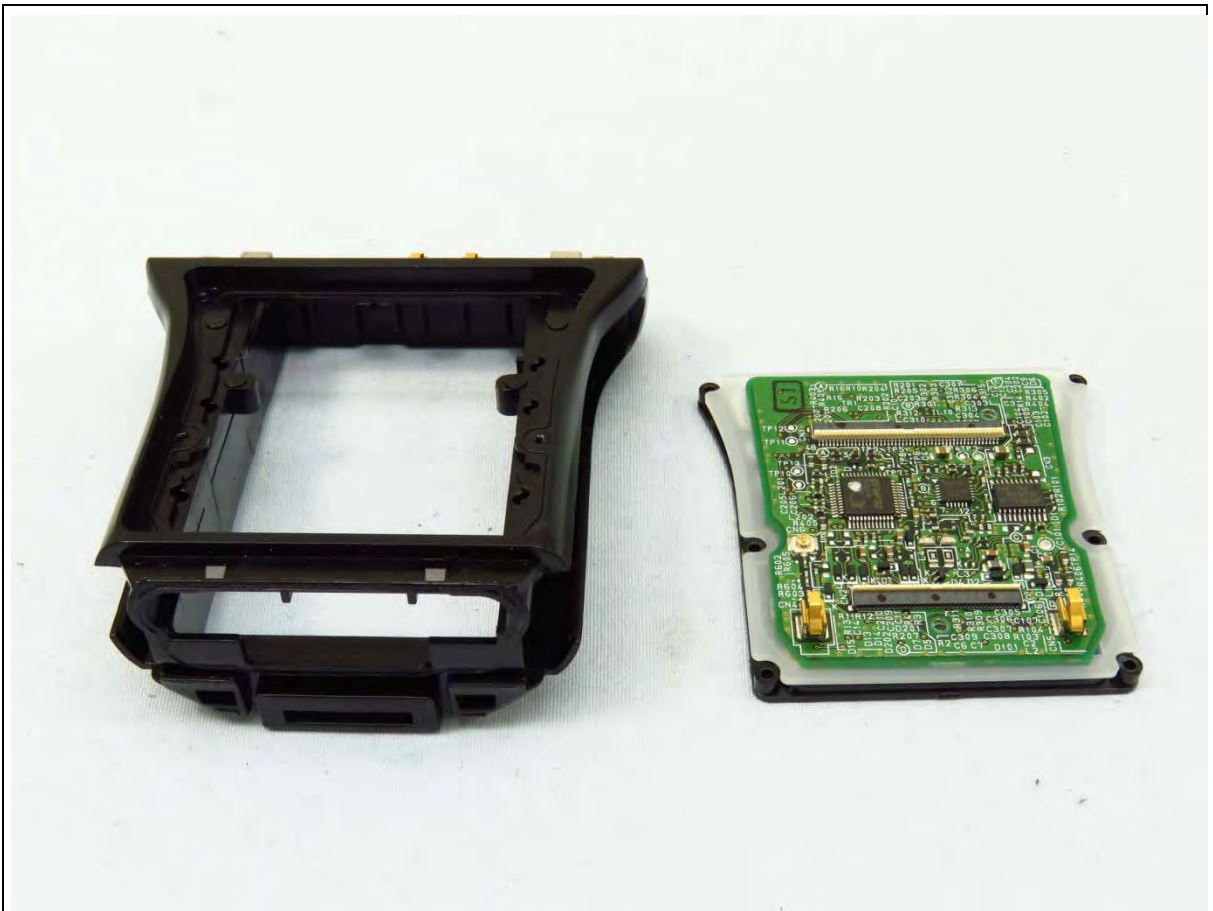
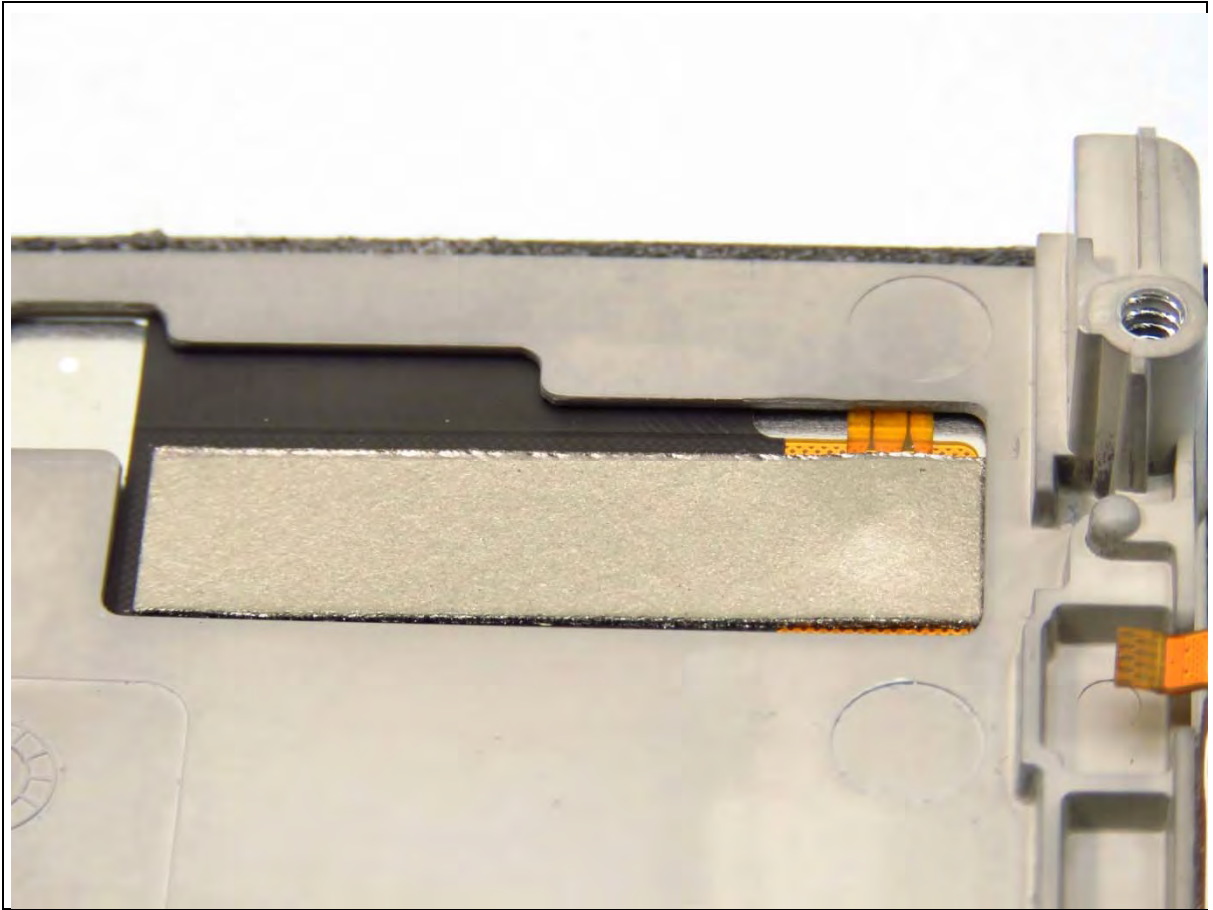




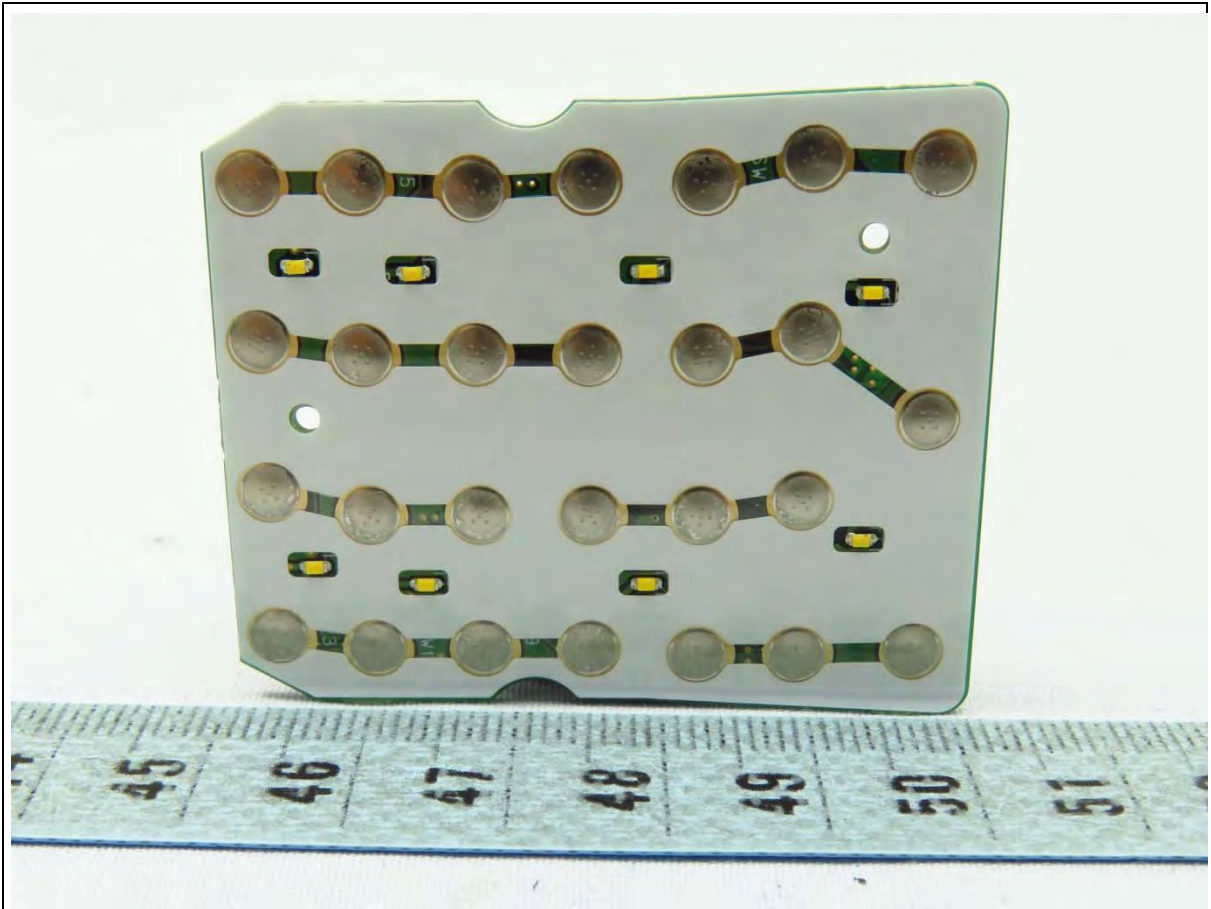
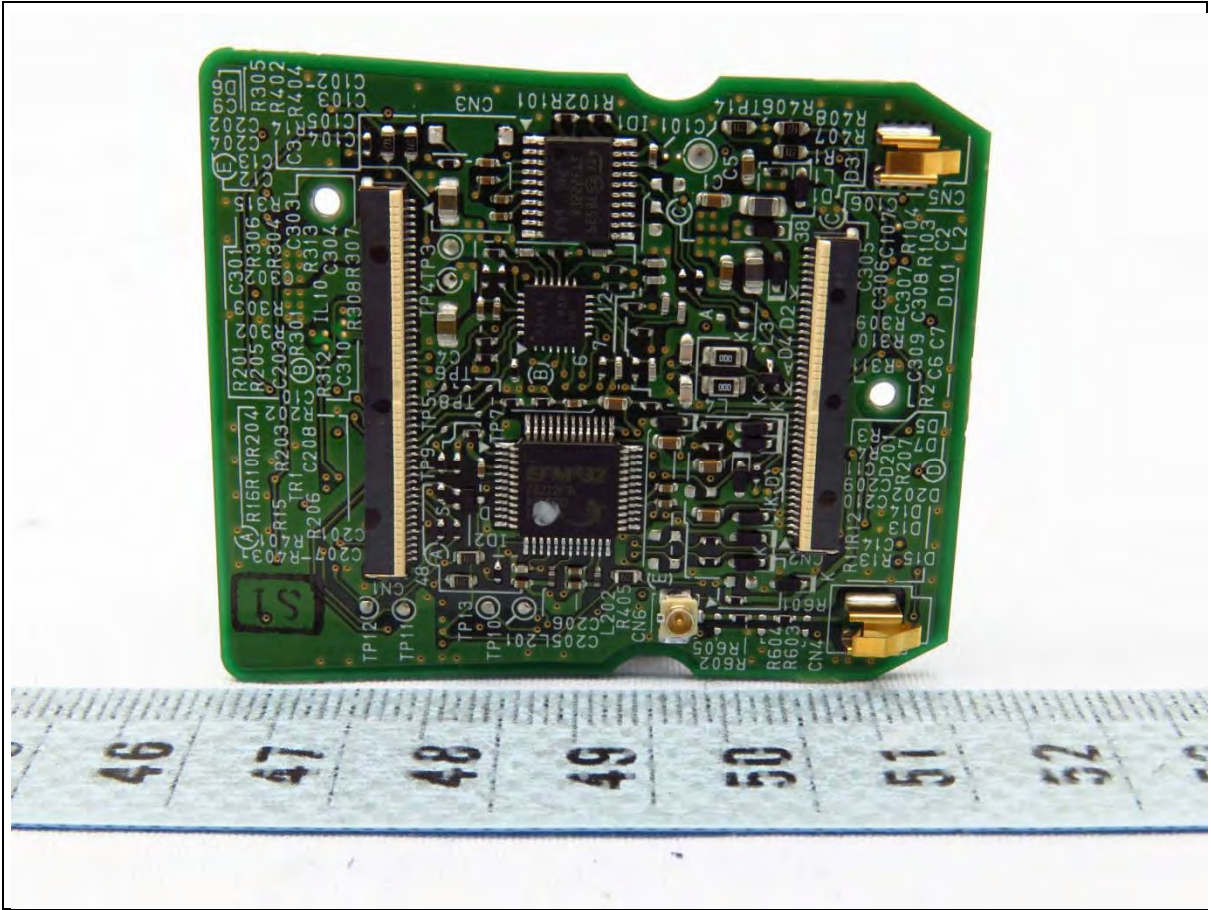














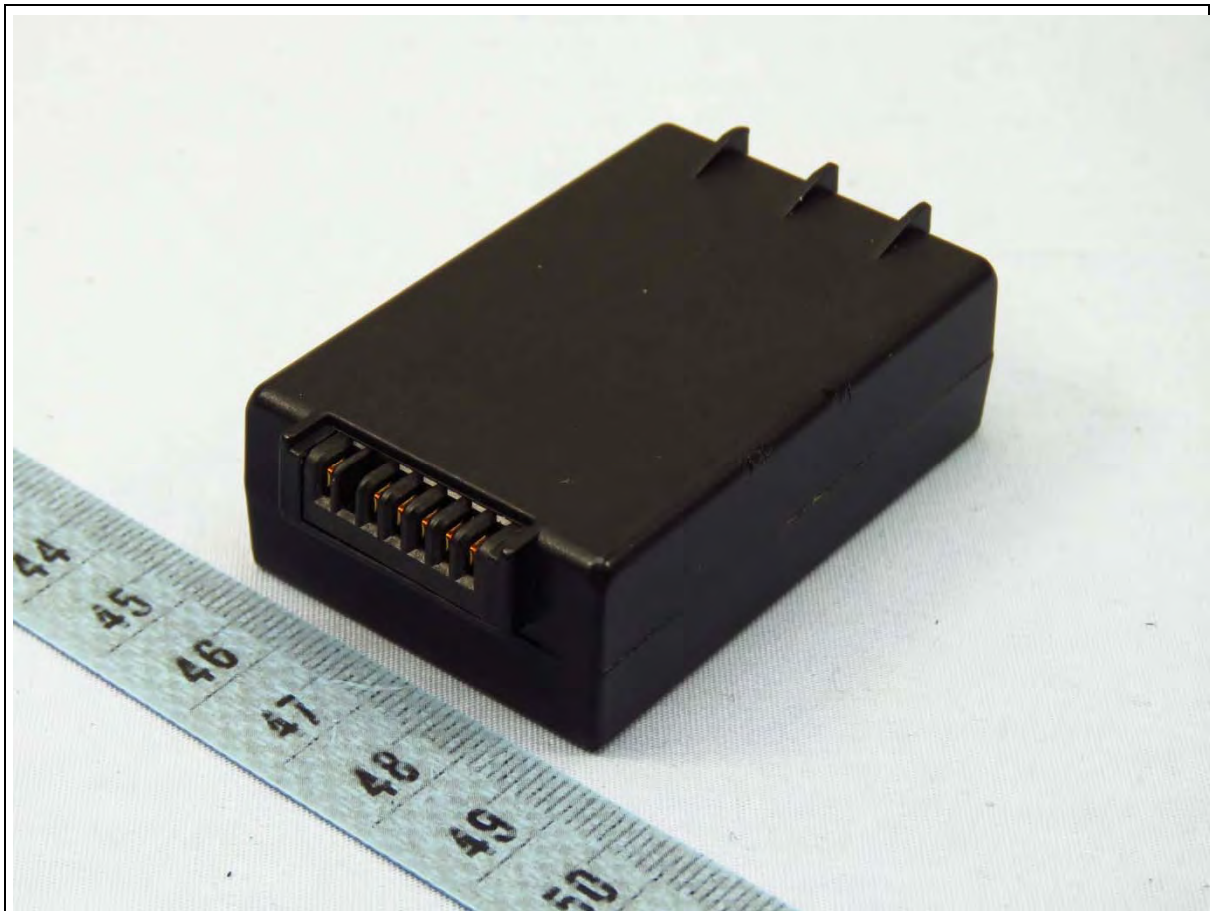












**DENSO**



**UL**®  
MH29921

**BT-110L**

**Part Number: 496466-1250(BP06-00029C)**

**Rechargeable Li-ion Battery**

**3.7V --- 3450mAh 12.8Wh**



TIS 2217-2548

**CAUTION** RISK OF EXPLOSION IF BATTERY IS REPLACED BY AN INCORRECT TYPE  
DISPOSE USED BATTERYIES ACCORDING TO THE INSTRUCTIONS

**危険** 発熱・発火・破裂の恐れがありますので、分解や改造、端子の短絡、過熱や火中への投入、  
高温場所に放置しないでください。詳細は取扱説明書をお読みください。

**警告** 本電池如果更換不正確會有爆炸的危險請按照生產商說明書處理用過的電池

**警告** 本電池如果更換不正確會有爆炸的危險請依製造商說明書處理用過之電池

**경고** 이 전지는 교환 방법을 잘못하면 폭발할 우려가 있습니다. 제조 메이커의 취급  
설명서를 참조해, 교환해 주세요.

ETICA Battery Inc.

1ICP5/34/50-3

수입자(한국)명 : 한국덴소판매주식회사

DENSO WAVE INCORPORATED

Assembled in Taiwan

C180102-009-055-048