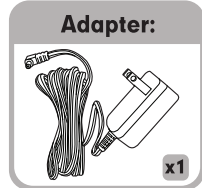
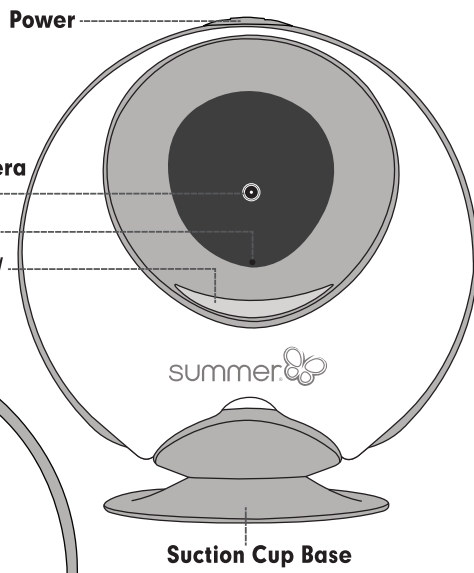




Adjustable Band For Surface Mount

Reset Button

AC Adapter Jack



Please read the following instructions and warnings carefully.  
Keep this instruction manual for future reference.

**For technical support see back page.**

For adult use only.

Adult assembly required.



INSTRUCTION MANUAL

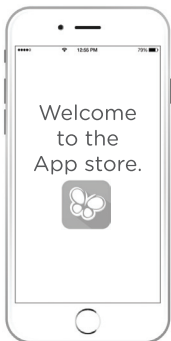
# LIV CAM™ ON THE GO WIRELESS CAMERA

**WARNING:** **STRANGULATION HAZARD - Children have STRANGLED in cords. Keep this cord out of reach of children (more than 3 feet (0.9 m) away from the crib). Never use extension cords with AC adapters. Only use the AC adapters provided.**

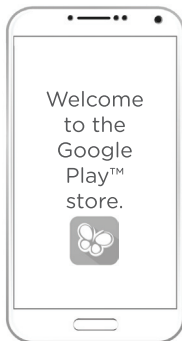
**setting up a camera for the first time:**

**1** Download the free APP from Google play or App store.

SEARCH FOR: SUMMER LIV CAM



Available on the App Store



ANDROID APP ON Google play

iOS

7.0 or above

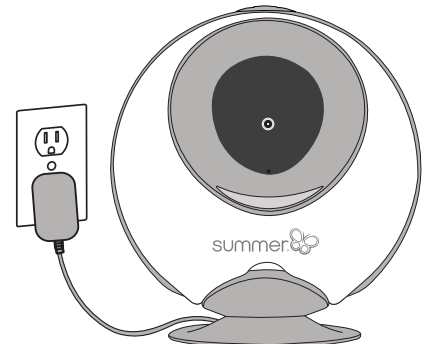


ANDROID 4.0 or above

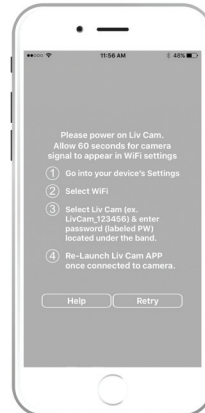
**IMPORTANT NOTE :**  
When connected to the LIV Cam, your smart device will not have internet access. You will still receive incoming & outgoing phone calls and text messages.

**2** Camera should be fully charged prior to first use.  
**Note:** May take 4-5 hours to fully charge.

**Power on the camera.**  
Hold down the Power button for 2 seconds and release.



**3** Connect your device (phone or tablet) to your LIV Cam by opening the LIV Cam APP and following the instructions on the screen.



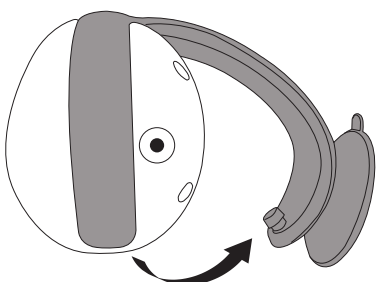
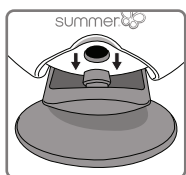
**4** Follow steps on screen to complete setup and you're ready to start viewing your little one!



**camera use:**

Determine a location for the camera that will provide the best view of your baby in the crib. Place the camera on a flat surface, such as a dresser, bureau or shelf. NEVER place camera cords within **3 feet** of the crib.

Suction cup will only work on smooth, flat surfaces. (i.e. glass). It is not intended to be used on rough surfaces or walls. Camera has a band that pops out from underside of unit. This band can be pivoted in order to achieve the best view of baby.



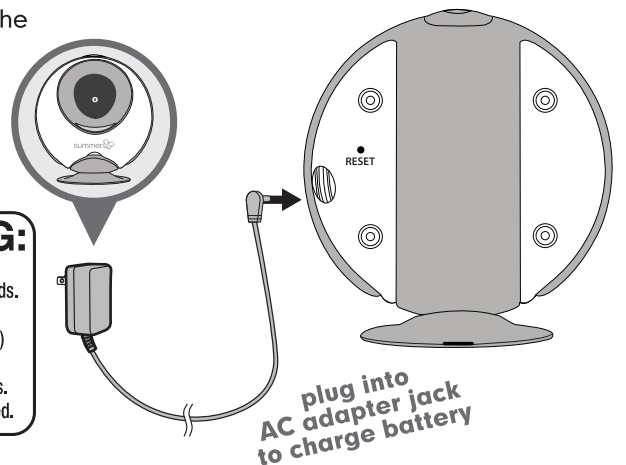
**camera LED status:**

**Green LED** signals the camera is powered on.

**Amber LED** signals the camera is charging. When fully charged, LED will turn off.

**Red LED** signals low battery.

**WARNING:** **STRANGULATION HAZARD - Children have STRANGLED in cords. Keep this cord out of reach of children (more than 3 feet (0.9 m) away from the crib). Never use extension cords with AC Adapters. Only use the AC Adapters provided.**



plug into AC adapter jack to charge battery



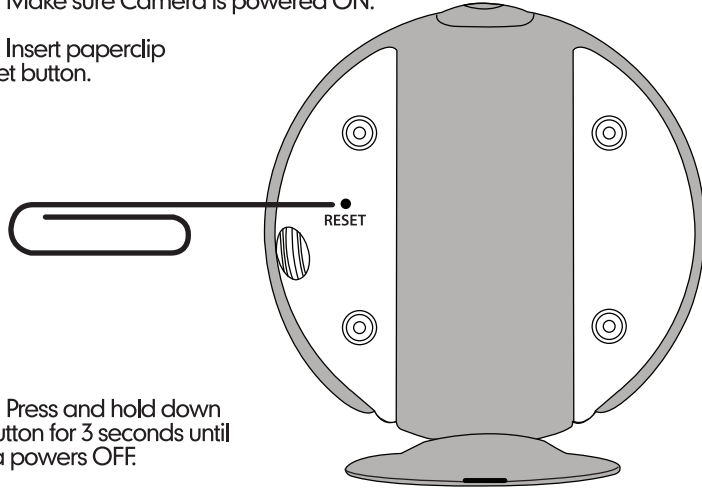
visit us at [www.summerinfant.com](http://www.summerinfant.com)

Summer Infant stands behind all of its products. If you are not completely satisfied or have any questions, please contact our Consumer Relations Team at **1-800-268-6237** or [www.summerinfant.com/contact](http://www.summerinfant.com/contact)

## re-setting camera to factory default:

**Step 1:** Make sure Camera is powered ON.

**Step 2:** Insert paperclip into reset button.



**Step 3:** Press and hold down reset button for 3 seconds until camera powers OFF.

**Step 4:** To continue using, enter the default password labeled on the product.

## power off camera:

Hold down the Power button for 1 second and release. Green LED will then turn OFF.

## troubleshooting tips:

### No Picture or sound

- Move closer to camera to get a connection
- Make sure camera is powered on. LED will turn green for power ON.
- Make sure you are connected to camera network.

### Cannot connect to camera

- Make sure password is entered correctly when in WiFi settings.
- Press the reset button located on back of your Liv Cam. See Resetting Camera to factory default.

### Camera not powering on

- Make sure camera is fully charged before each use.
- Plug adaptor into camera to turn on. Allow for camera to charge for 1 hr and unplug to see if camera will still operate on battery power.
- For additional assistance, contact a Summer Infant Consumer Representative at 1-800-268-6237.

### APP stuck on home screen when launching

- If your device is connected to the camera, force close the Liv Cam app, turn off your device's WiFi and then turn back on within 3 secs. Reconnect to your camera and re-launch your Liv Cam APP.

## ⚠ WARNING:

THIS PRODUCT CANNOT REPLACE RESPONSIBLE ADULT SUPERVISION.

- **STRANGULATION HAZARD** - Children have STRANGLED in cords. Keep the cord out of reach of children (more than 3 feet (0.9 m) away from the crib). Never use extension cords with the AC adapter. Only use the AC adapter provided with the product.
- When an AC adapter is plugged into an electrical outlet, do not touch the exposed end.
- Test monitor before first use, periodically, and when changing locations.
- Do not use near water (such as bathtub, sink, etc.).
- Keep away from heat sources (such as stoves, radiators, etc.).
- Make sure there is proper ventilation around all components.  
Do not place on sofas, cushions, beds, etc. which may block ventilation.
- This product is not a toy. Do not allow children to play with it. Keep out of child's reach.

## REPLACEMENT PARTS AND PRODUCT REGISTRATION

If you need to order a replacement part you can contact our Customer Relations Department at **1-800-268-6237** or via email at [www.summerinfant.com/contact](http://www.summerinfant.com/contact)

- AC Adapter: #29560-13

To register your product, visit: [www.summerinfant.com/product-registration/product-registration-form](http://www.summerinfant.com/product-registration/product-registration-form)

**If you experience a problem that is not noted in this manual, please do not return the product to the store. Our Customer Service Department may have a simple solution to your problem. Please contact us at 1-800-268-6237 or email us at [summerinfant.com/contact](mailto:summerinfant.com/contact).**

### Summer Infant, Inc. Monitor Warranty Policy

Summer Infant, Inc. will repair or replace (at our option) your unit free of charge for 12 months from the date of purchase if the unit is defective in workmanship or materials. To claim your repair/replacement, the product must be returned to Summer Infant along with a copy of the original purchase receipt. In the absence of the purchase receipt, the warranty will be 12 months from the date of manufacture. This warranty does not apply to normal wear or damage from misuse, abuse, improper storage and handling, installation, accident, unauthorized repair or alteration. Please contact our Customer Service Department by phone at 1-800-268-6237 or via e-mail at [www.summerinfant.com/contact](mailto:www.summerinfant.com/contact) for details.

For sale and use in the USA and CANADA. The warranty is null and void if used outside its intended territory.

### FCC Information

This device complies with part 15 of the FCC Rules. Operation is subject to the following two conditions: (1) This device may not cause harmful interference, and (2) this device must accept any interference received, including interference that may cause undesired operation.

CAUTION: Changes or modifications not expressly approved by Summer Infant may void the users authority to operate this equipment.

NOTE: This equipment has been tested and found to comply with the limits for a Class B digital device, pursuant to part 15 of the FCC Rules. These limits are designed to provide reasonable protection against harmful interference in a residential installation. This equipment generates, uses and can radiate radio frequency energy and, if not installed and used in accordance with the instructions, may cause harmful interference to radio communications. However, there is no guarantee that interference will not occur in a particular installation. If this equipment does cause harmful interference to radio or television reception, which can be determined by turning the equipment off and on, the user is encouraged to try to correct the interference by one or more of the following measures:

- Reorient or relocate the receiver
- Increase the separation between the equipment and the receiver
- Connect the equipment into an outlet on a circuit different from that to which the receiver is connected.
- Consult the dealer or an experienced radio/TV technician for help

CAUTION: 1. The product complies with the US RF exposure set forth for an uncontrolled environment and are safe for intended operation as described in this manual. To maintain the compliance with FCC's RF exposure guideline, place the device at least 20 cm from nearby persons.  
2. This transmitter must not be co-located or operating in conjunction with any other antenna or transmitter.

### IC Caution

This device complies with Industry Canada licence-exempt RSS standard(s). Operation is subject to the following two conditions:

- (1) This device may not cause interference, and
- (2) This device must accept any interference, including interference that may cause undesired operation of the device.

### Radiation Exposure Statement:

1. The product comply with the Canada RF exposure set forth for an uncontrolled environment and are safe for intended operation as described in this manual. To maintain the compliance with IC's RF exposure guideline, place the device at least 20 cm from nearby persons.
2. This transmitter must not be co-located or operating in conjunction with any other antenna or transmitter.

### Remarque d'Industrie Canada

Cet appareil répond aux normes relatives aux appareils radio exempts de licence d'Industrie Canada. Son fonctionnement est soumis aux deux conditions suivantes :

- (1) cet appareil ne doit pas causer d'interférences nuisibles, et
- (2) il doit accepter toute autre interférence reçue, y compris les interférences pouvant entraîner un fonctionnement indésirable.

### Déclaration d'exposition aux radiations:

Le produit est conforme aux limites d'exposition pour les appareils portables RF pour les Etats-Unis et le Canada établies pour un environnement non contrôlé. Le produit est sûr pour un fonctionnement tel que décrit dans ce manuel. La réduction aux expositions RF peut être augmentée si l'appareil peut être conservé aussi loin que possible du corps de l'utilisateur ou que le dispositif est réglé sur la puissance de sortie la plus faible si une telle fonction est disponible.

## ⚠ BATTERY WARNING:

- The battery in the camera is not replaceable. Do not attempt to replace battery.
- Dispose of exhausted battery properly.
- Keep all batteries away from children.
- Do not expose battery/camera to water.
- Never immerse in water.
- Never expose to, or dispose of the battery in fire.
- Keep out of reach of children.
- Battery must be charged with charger provided only. NEVER use any charger that was not provided with the product.
- Never use a modified or damaged charger.
- Discontinue charging after specified charging time even if the charging is not completed.
- Never use the battery in a place near fire, heaters, or high temperature sources.
- Regulations vary for different locations. Dispose of in accordance with local regulations.
- Camera should be fully charged prior to first use.