

## FCC Information

This device complies with part 15 of the FCC Rules. Operation is subject to the following two conditions: (1) This device may not cause harmful interference, and (2) this device must accept any interference received, including interference that may cause undesired operation.

CAUTION: Changes or modifications not expressly approved by Summer Infant may void the users authority to operate this equipment.

NOTE: This equipment has been tested and found to comply with the limits for a Class B digital device, pursuant to part 15 of the FCC Rules. These limits are designed to provide reasonable protection against harmful interference in a residential installation. This equipment generates, uses and can radiate radio frequency energy and, if not installed and used in accordance with the instructions, may cause harmful interference to radio communications. However, there is no guarantee that interference will not occur in a particular installation. If this equipment does cause harmful interference to radio or television reception, which can be determined by turning the equipment off and on, the user is encouraged to try to correct the interference by one or more of the following measures:

- Reorient or relocate the receiver
- Increase the separation between the equipment and the receiver
- Connect the equipment into an outlet on a circuit different from that to which the receiver is connected.
- Consult the dealer or an experienced radio/TV technician for help

CAUTION: 1. To comply with FCC RF exposure compliance requirements, a separation distance of at least 20 cm must be maintained between the antenna of this device and all persons. 2. This transmitter must not be co-located or operating in conjunction with any other antenna or transmitter.

## Summer Infant, Inc. Monitor Warranty Policy

Summer Infant, Inc. will repair or replace (at our option) your unit free of charge for 12 months from the date of purchase if the unit is defective in workmanship or materials. To claim your repair/replacement, the product must be returned to Summer Infant along with a copy of the original purchase receipt. In the absence of the purchase receipt, the warranty will be 12 months from the date of manufacture. This warranty does not apply to normal wear or damage from misuse, abuse, improper storage and handling, installation, accident, unauthorized repair or alteration. Please contact our Customer Service Department by phone at 1-800-268-6237 or via e-mail at customerservice@summerinfant.com for details.

This device complies with Industry Canada licence-exempt RSS standard(s). Operation is subject to the following two conditions:

- (1) this device may not cause interference, and
  - (2) this device must accept any interference, including interference that may cause undesired operation of the device.
- Under Industry Canada regulations, this radio transmitter may only operate using an antenna of a type and maximum (or lesser) gain approved for the transmitter by Industry Canada. To reduce potential radio interference to other users, the antenna type and its gain should be so chosen that the equivalent isotropically radiated power (e.i.r.p.) is not more than that necessary for successful communication.

## BATTERY WARNING:

- Use only the original rechargeable batteries provided. Please contact Summer Infant, Inc. for replacement batteries. Contact information can be found on bottom of these instructions or on the battery itself.
- Do not mix old and new batteries.
- Do not mix alkaline, standard, or rechargeable batteries.
- Batteries are to be inserted with correct polarity.
- Clean battery and product contacts prior to battery installation.
- Do not short-circuit supply terminals.
- Only the recommended batteries or equivalent are to be used, volts and size.
- Remove batteries when product is stored for long periods of time or when batteries are exhausted.
- Dispose of exhausted batteries properly.
- Do not recharge non-rechargeable batteries.
- Rechargeable batteries are only to be charged under adult supervision.
- Keep all batteries away from children.

## WARNING:

THIS PRODUCT CANNOT REPLACE RESPONSIBLE ADULT SUPERVISION.

- STRANGULATION HAZARD - Keep cord out of baby's reach. NEVER place camera or cords within 3 feet of the crib. Use enclosed Security Clips to help secure cord away from baby's reach. Never use extension cords with AC Adapters provided.
- When an AC Adapter is plugged into an electrical outlet, do not touch the exposed end.
- Test monitor before first use, periodically, and when changing location of the Camera.
- Do not use monitor near water (such as bathtub, sink, etc.).
- Keep monitor away from heat sources (such as stoves, radiators, etc.).
- Make sure there is proper ventilation around all monitor components. Do not place on sofas, cushions, beds, etc. which may block ventilation.
- Nursery monitors use public airwaves to transmit signals. This monitor may pick up signals from other monitors or similar devices and signals broadcast by this monitor may be picked up by other receivers.
- This product is not a toy. Do not allow children to play with it.
- This product contains small parts. Adult assembly required. Exercise care when unpacking and assembling the product.

## Testing Your Initial Setup:

Be sure to test your Monitor's reception before initial use. We also recommend testing your Monitor's reception periodically. Please keep in mind that the Baby Touch® Plus Digital Handheld Color Video Monitor will not provide the same level of picture quality as your television with cable, satellite dish, or digital service.

To test reception you will need two adults. One adult should view the picture on the Monitor while the other is in the nursery to adjust the Camera. Often the quality of the reception can be improved by slightly repositioning the Camera, Monitor, or both. It may help to place a stuffed animal or doll in the crib to simulate the position and size of your baby. Adjust the picture quality on the Monitor as needed by using the Brightness Adjustment on the front of the Monitor.

To test sound quality, have one adult speak in both a normal tone and a whisper near the crib. Adjust volume on the Monitor's Volume Adjustment as needed.

**To Use the Video Monitor in Portable Mode:**  
For use in portable mode, the Monitor requires 1.3.7V LITHIUM-ION rechargeable battery (included).

- Tips:**
- Before using Monitor in portable mode (battery), be sure to charge battery 12-16 hours.
  - To charge battery, plug the larger AC Adapter into the Monitor's AC Adapter Jack. Plug the other end into a standard electrical outlet.
  - After initial 12-16 hour charge, to achieve optimal battery life, charge battery overnight and unplug all day during use.
  - **Note:** Only charge battery when low indicator light comes on. Constant recharging of your battery before low battery indicator light comes on will decrease the life of your batteries.
  - When battery is low, the Power On LED will illuminate amber, indicating that the battery needs to be recharged.
  - To conserve battery power, use AC Adapter whenever possible. Remove battery during long periods of non-use.
  - If battery is exhausted, remove immediately from the Monitor.
  - Properly dispose of exhausted battery.



28520

Tools required:  
screwdriver (not included)  
For technical support  
see back page.

For use with children  
from birth and up.

**WARNING:**  
Adult assembly required. Keep small parts  
away from children when assembling.

## INSTRUCTION MANUAL

Please read the following instructions and warnings carefully. Keep this instruction manual for future reference.

## WARNING:

STRANGULATION HAZARD - Keep cord out of baby's reach. NEVER place camera or cords within 3 feet of the crib. Use enclosed Security Clips to help secure cord away from baby's reach. Never use extension cords with AC Adapters. Only use the AC Adapters provided.

## Set Up

### CAMERA

**WARNING:**  
STRANGULATION HAZARD - Keep cord out of baby's reach. NEVER place camera or cords within 3 feet of the crib. Use enclosed Security Clips to help secure cord away from baby's reach. Never use extension cords with AC Adapters. Only use the AC Adapters provided.

**Table Top or Wall Mounting:**  
Determine a location for the CAMERA that will provide the best view of your baby in his crib. Place the CAMERA on a flat surface, such as a dresser, bureau, or shelf (Figure A). Or mount the CAMERA on a wall (Figure B). NEVER place camera or cords within 3 feet of the crib. Secure the cord to the wall using the 6 Security Clips included to keep cord away from baby's reach.

**Be sure to test reception and CAMERA positioning before mounting to a wall (see "Testing Your Initial Set Up" section).**

### To Wall Mount:

- Pre-drill a hole in the wall (3/16", 4.8mm, drill bit) (Figure C).
- Insert the wall anchor (included) into the hole and with a hammer, tap gently on the end until the wall anchor is flush with the wall.
- Insert the screw (included) into the wall anchor and tighten screw until only 1/4" (6.2mm) of the screw is exposed.
- Insert smaller AC Adapter into the CAMERA's AC Adapter Jack.
- Slide the back of the CAMERA down onto the screw until the CAMERA is secure to the wall.
- Plug the AC Adapter into a standard electrical outlet.
- Secure the cord to the wall using the 6 Security Clips included to keep cord away from baby's reach (Figures B & D).
- Slide switch on side of Camera to ON and the POWER ON LED will illuminate solid green.

### MONITOR

#### To Use in Video and Audio Mode:

- Step 1:** Place the Monitor in the room from which you want to monitor your baby (i.e. bedroom or living room). Plug an AC Adapter into the AC Adapter Jack and the other end into a standard electrical outlet.
- Step 2:** Press and hold "POWER" button for 4 seconds to turn on until video or Summer logo appears on screen.
- Step 3:** For audio and no video, press the VIDEO ON/OFF button on top of the unit.
- Step 4:** To turn the monitor off completely, press and hold the "POWER" button for 4 seconds.

#### Synching Monitor and Camera:

The Monitor and Camera are synched at the factory for privacy reasons. If the Monitor and Camera are not synching with each other for any reason, please sync them as described below.

**Step 1:** Move the Monitor to the same area as the Camera. Make sure that both the Camera and Monitor are on.

**Step 2:** To add a camera, press the camera button from the touch menu. Use the up and down arrows to navigate to the "Add Cam" option. Press "Q" icon to select and enter the "Add Cam" menu. Navigate the left or right button to select the camera to be synched. Press "Q" icon and the camera image starts blinking.

**Step 3:** Press the code button on back of Camera head to synch.

**Step 4:** Once synched, a picture from the newly added Camera will appear on Monitor screen.



#### Charging Monitor:

The Monitor can also be charged using the Monitor Recharge Base.

**Step 1:** Plug AC Adapter into AC Adapter Jack on back of Monitor Recharge Base. Then plug the AC Adapter into a standard electrical outlet.

**Step 2:** Place Monitor into recharge base. (Note: You will hear an audible click to signify the Monitor is properly engaged.)

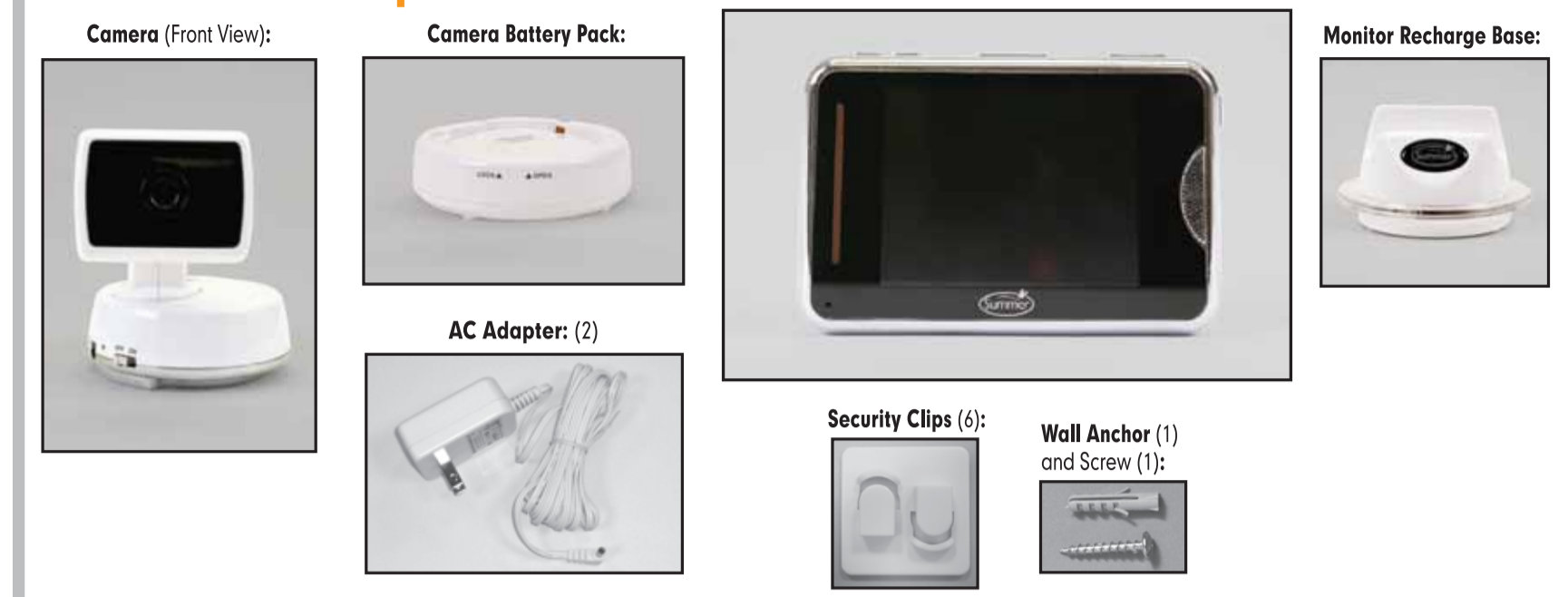
**If Monitor is already on:** Battery Power Indicator will flash until unit is fully charged.

**If Monitor is in "Off" mode:** A large battery charging icon will appear for 30 seconds signifying battery is charging. The screen will go black after 30 seconds.

## Special Features:

- **Talk Back Button:** Allows parents to talk into the monitor and child to hear voice through camera.
- **Nightlight:** Remotely control nightlight in baby's room from handheld unit.
- **Video Sleep Mode:** While operating on battery power, the video screen will go to sleep, to conserve battery power. Audio and sound lights will function normally. Press the Video On/Off to resume viewing. This option is NOT available when using AC adapter.
- **Sound Lights:** The 5 Sound Lights will illuminate on the Monitor depending on the level of your baby's sounds. For example, if your child is just cooing, only one or two lights will illuminate. If your baby is crying, several will illuminate, depending on how loud she is crying. This feature is particularly helpful if you are in a noisy room.
- **Quick View/Video On/Off Button:** This button turns the video mode on. If you only want to hear your baby, press the Quick View/Video On/Off Button again to shut off the video. The Quick View/Video On/Off Button is ideal for easily turning on the video option in the middle of the night.
- **Night Vision:** In a darkened room, the Monitor will automatically use its infrared LED's to transmit a clear image of baby, so you can see your child at night!
- **Multi-Position Camera/Microphone:** The Camera/Microphone should be positioned so it is facing baby as much as possible. This multi-position feature is unique to Summer Infant nursery monitors. It allows the microphone to focus on baby's voice while filtering out other household noises.
- **Footrest:** The Monitor has a built-in footrest for tabletop convenience. Simply flip out footrest and place the Monitor on a stable, level surface
- **Belt Clip:** For convenience and portability, you can clip the Monitor to your belt or waistband.

## Features & Components:



## Power



**ON**  
Press for **four seconds** to power on. Power on bar will appear while software is booting up.

**OFF**  
Press for **four seconds** to power off. Power off bar will appear while software is booting down.

## Pan/Scan



Use up, down, left and right arrows to control camera movement.

## Brightness Control



Press brightness control button . Use up and down arrows to control brightness. Press to exit.

## Zoom



Press the zoom button to zoom in or out.

## Camera Menu Options

**Note:** This product can accept up to four cameras. To order an additional camera (#28320) please contact our customer service department by phone at 1-800-268-6237 or via e-mail at customerservice@summerinfant.com for details. For Europe call +44 (0)206-420-4429 or via e-mail at customerserviceuk@summerinfant.com.

Add Cam, View Cam, Delete Cam and Scan can only be used when extra cameras are added (additional purchase required).

## Problem Solving:

### No picture or sound on Monitor

- Make sure the Monitor is turned on
- Make sure the AC Adapters are plugged in
- Make sure the outlets are working
- Make sure Monitor and Camera are SYNCHED up.

### Sound but no picture on Monitor

- Press the Quick View/Video On/Off Button once to turn on video mode
- Try adjusting the Brightness Control on the Monitor
- Test reception by moving the Monitor and/or CAMERA to different locations

### Picture but no sound

- Turn up the volume on the Monitor using the Volume Control

### Picture not clear

- Position the Monitor closer to the CAMERA if necessary
- Move Monitor away from other monitors, cordless phones, walkie-talkies, etc.
- Try adjusting the Brightness Control on the Monitor

### Monitor

- Test reception by moving the Monitor and/or CAMERA to different locations

### Squealing sound

- Move the CAMERA and the Monitor further away from each other

**If you experience a problem that is not noted in this manual, please do not return the product to the store. Our Customer Service Department may have a simple solution to your problem. Please contact us at 1-800-268-6237 or email us at [www.summerinfant.com/contact](mailto:www.summerinfant.com/contact).**

## Tips For Improving Reception:

- Position the Monitor closer to the CAMERA if necessary.
- Move Monitor away from other monitors, cordless phones, walkie-talkies, etc.; moving even slightly could greatly improve reception.
- If you hear a feedback or squealing noise, move the CAMERA and the Monitor further away from each other.

## Battery Installation

**Monitor: This step is only needed if replacing battery.**

1. Locate the battery compartment door on back of monitor.
2. Slide open battery door and insert battery. Ensure correct connection. Slide battery door back in place.

### Portable Camera Battery Pack:

#### Set Up & Use

1. Locate the battery compartment door on bottom of camera battery pack (Figure E).
2. Use Phillips Head Screwdriver to remove battery door.
3. Insert 4 AA batteries (not included). Ensure correct connection.
4. Place battery door back and screw closed.
5. Place camera on top of battery pack. Twist camera clockwise until the arrow from the camera are aligned with the "lock" arrow on battery pack (Figure F).
6. Turn camera to "ON" position. Note: Camera battery pack will supply portable power for up to 10 hours.
7. To remove camera from battery pack, twist camera counterclockwise until the arrow from the camera are aligned with the "UNLOCK" arrow on the battery pack.



Summer Infant, Inc.  
1275 Park East Drive  
Woonsocket, RI 02895 USA  
1-800-268-6237

© 2012 Summer Infant, Inc.  
Please retain information  
for future reference.  
Colors and styles may vary.  
MADE IN CHINA 4/12

Summer Infant  
Canadian Office  
1055 Middlegate Road  
Mississauga, Ontario,  
Canada L4Y 1Y4  
905-848-2424