



RF EXPOSURE REPORT

REPORT NO.: SA991022E10

MODEL NO.: 28010

FCC ID: PZK-28010R

ACCORDING: FCC Guidelines for Human Exposure
IEEE C95.1

APPLICANT: Summer Infant Inc.

ADDRESS: 1275 Park East Drive Woonsocket, RI. 02895. United States

ISSUED BY: Bureau Veritas Consumer Products Services (H.K.) Ltd., Taoyuan Branch Hsin Chu Laboratory

LAB ADDRESS: No. 81-1, Lu Liao Keng, 9th Ling, Wu Lung Tsuen, Chiung Lin Hsiang, Hsin Chu Hsien 307, Taiwan

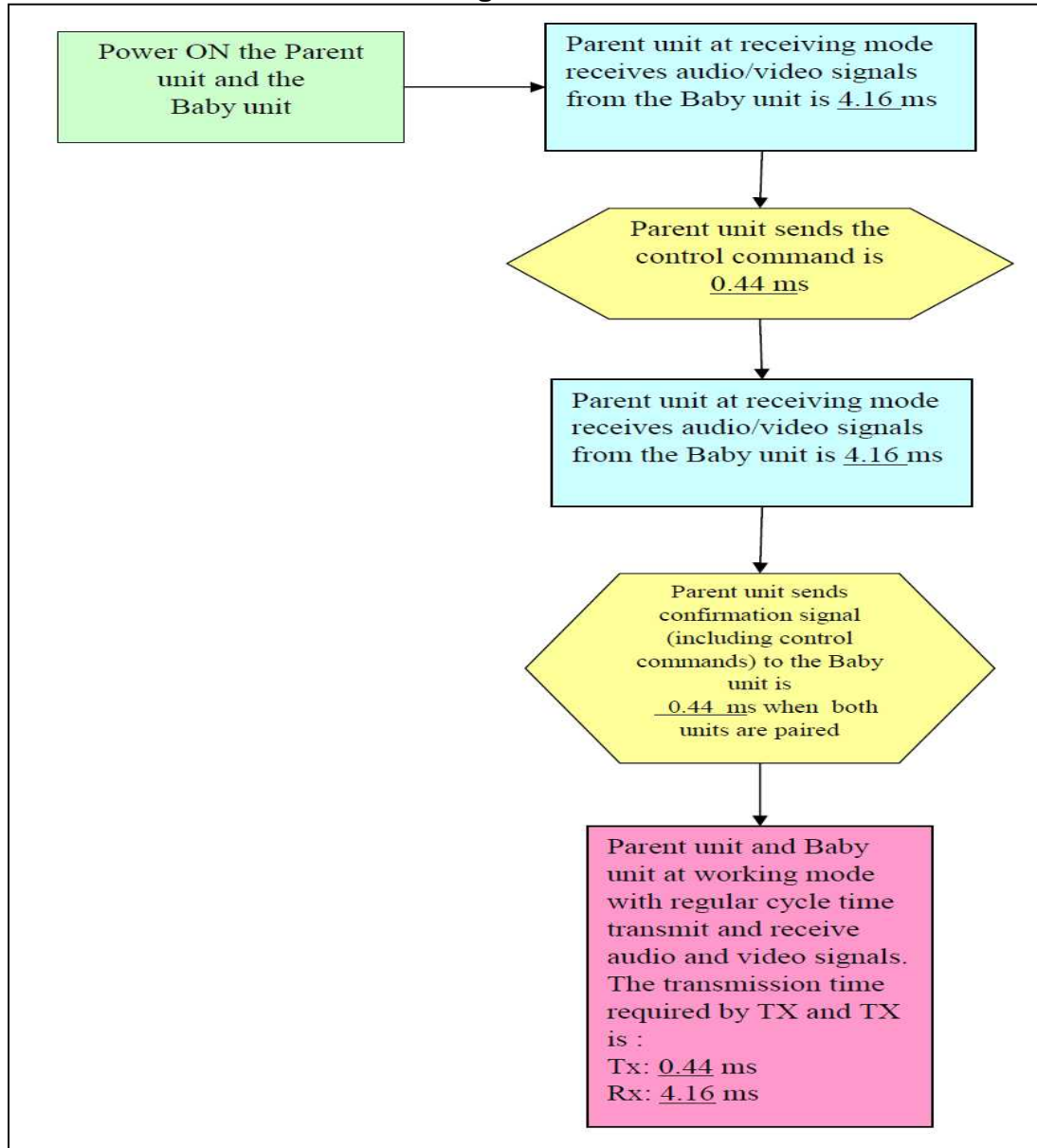


No SAR justification for FCC ID : PZK-28010R

Maximum number of times

The portable monitor connects to surveillance camera with a fixed Transmitting / Receiving duty cycle of 0.44ms: 4.16ms (9.6%) as calculated below. This ratio is fixed programmed in the firmware and is not user changeable.

Actual Tx-on time for transmitting



Duty factor

Complete cycle time: $0.44\text{msec} + 4.16\text{msec} = 4.6\text{msec}$

Worst case duty cycle = $0.44\text{msec} / 4.6\text{msec} = 0.096 * 100\% = 9.6\%$

Source-base time average conducted power table

Channel	Frequency (MHz)	Conducted power (dBm)	Conducted power (mW)	Source-based time-averaged conducted output power (mW)	Source-based time-averaged eirp power (mW)	SAR threshold (mW)
0	2408.625	20.9	123.0	11.81	11.81	24
28	2436.75	20.4	109.6	10.52	10.52	24
60	2469.375	19.9	97.7	9.38	9.38	24

There is one antenna provided to this EUT, please refer to the following table:

Antenna Type	Antenna Gain (dBi)	Connector	Frequency range (MHz)
monopole	0	NA	2408.625 to 2470.5

Conclusion

Since Source-base time average power is below SAR exempt power level, the SAR evaluation is not required.

Signal plot

ON Time:

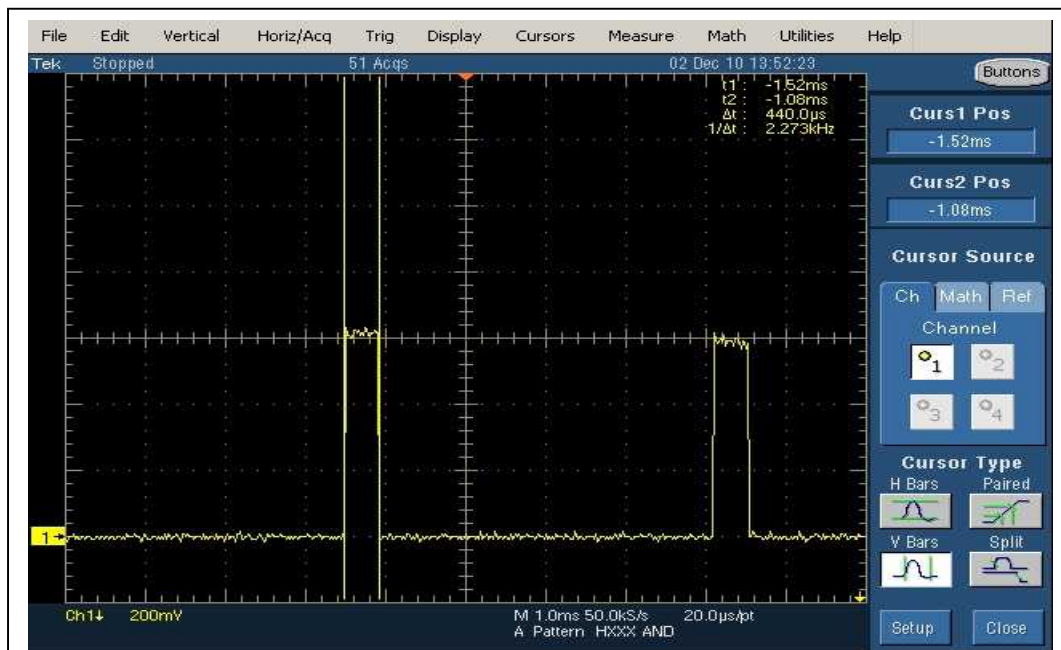


Figure 1

ON+OFF Time:



--- END ---