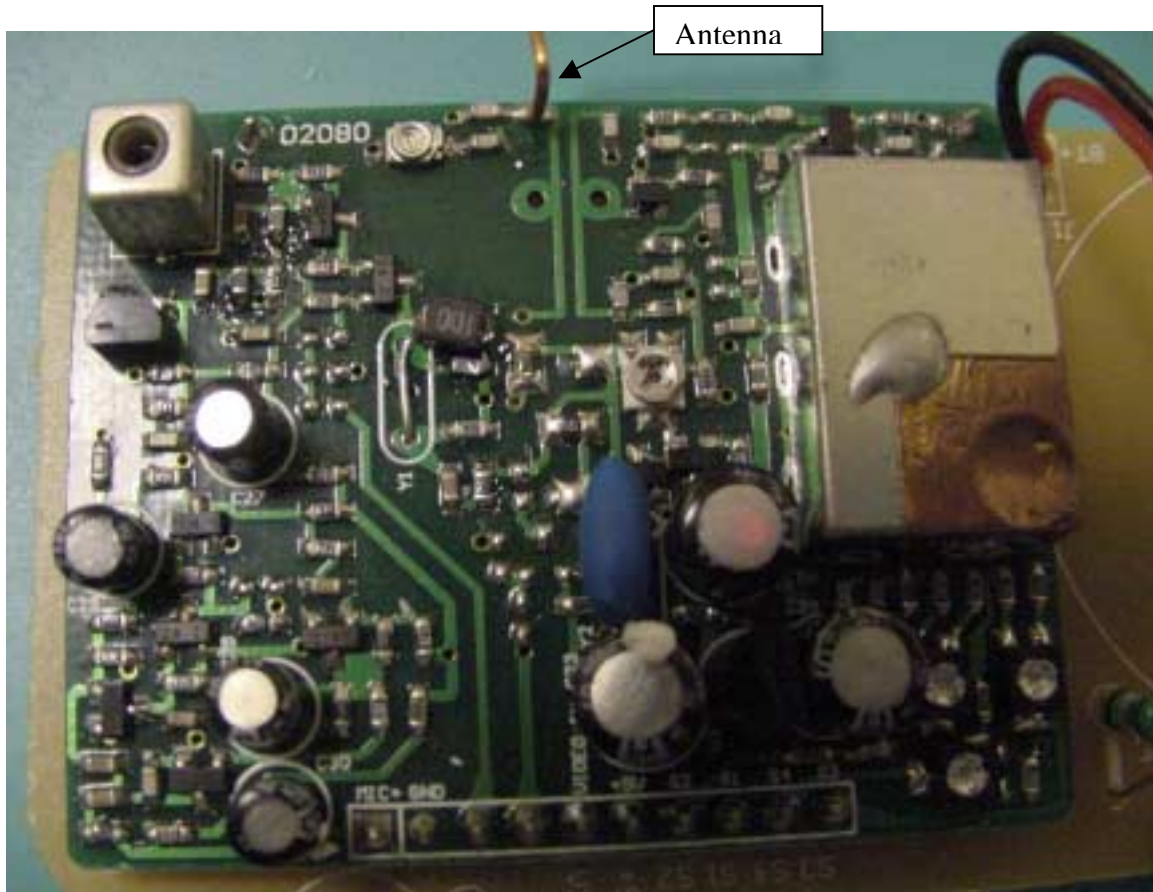
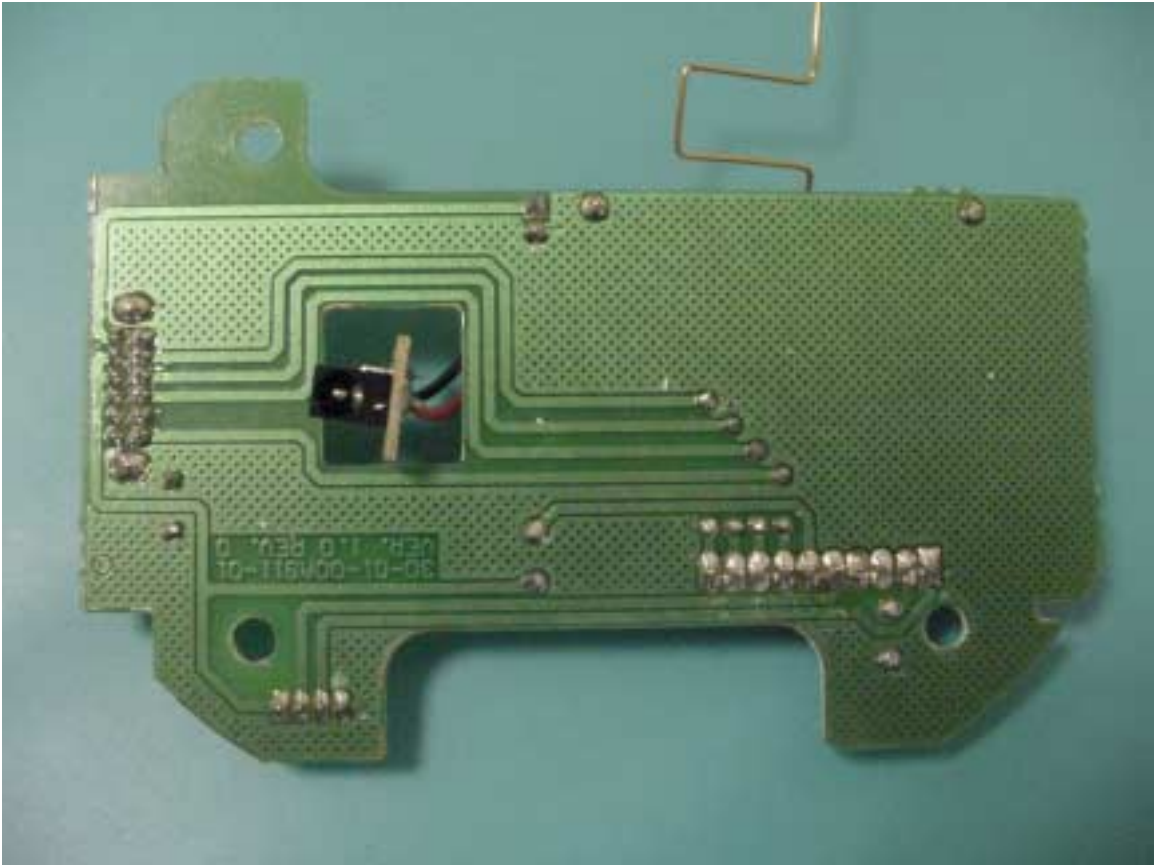




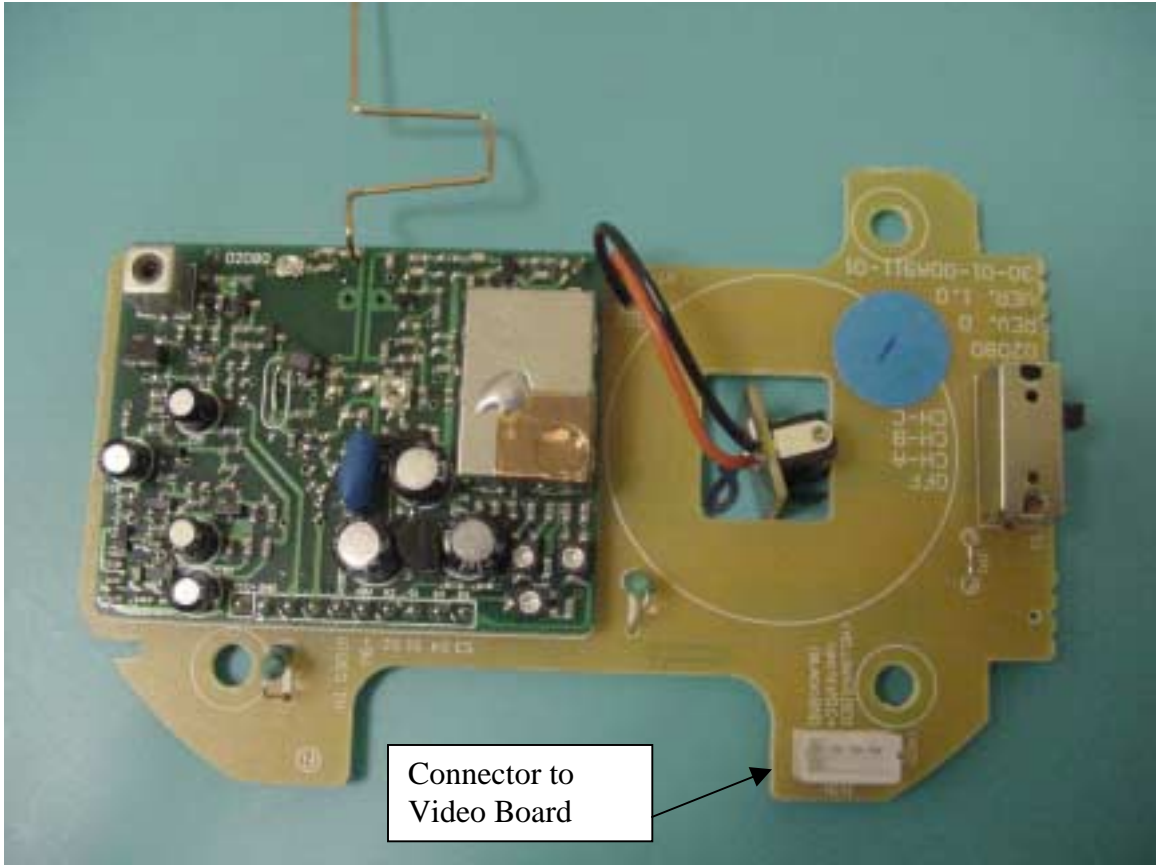
Main board, with RF board showing antenna length.



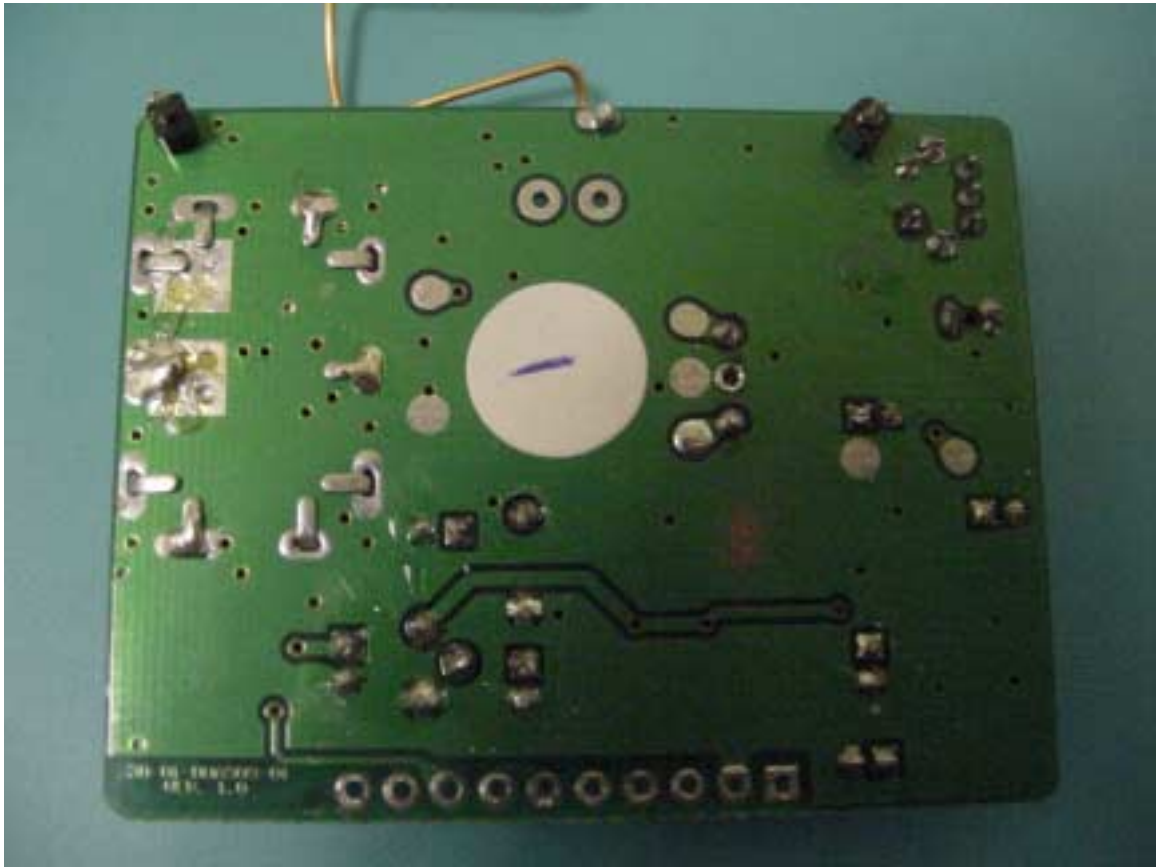
Component Side view of RF board, showing also the soldered connection to the antenna.



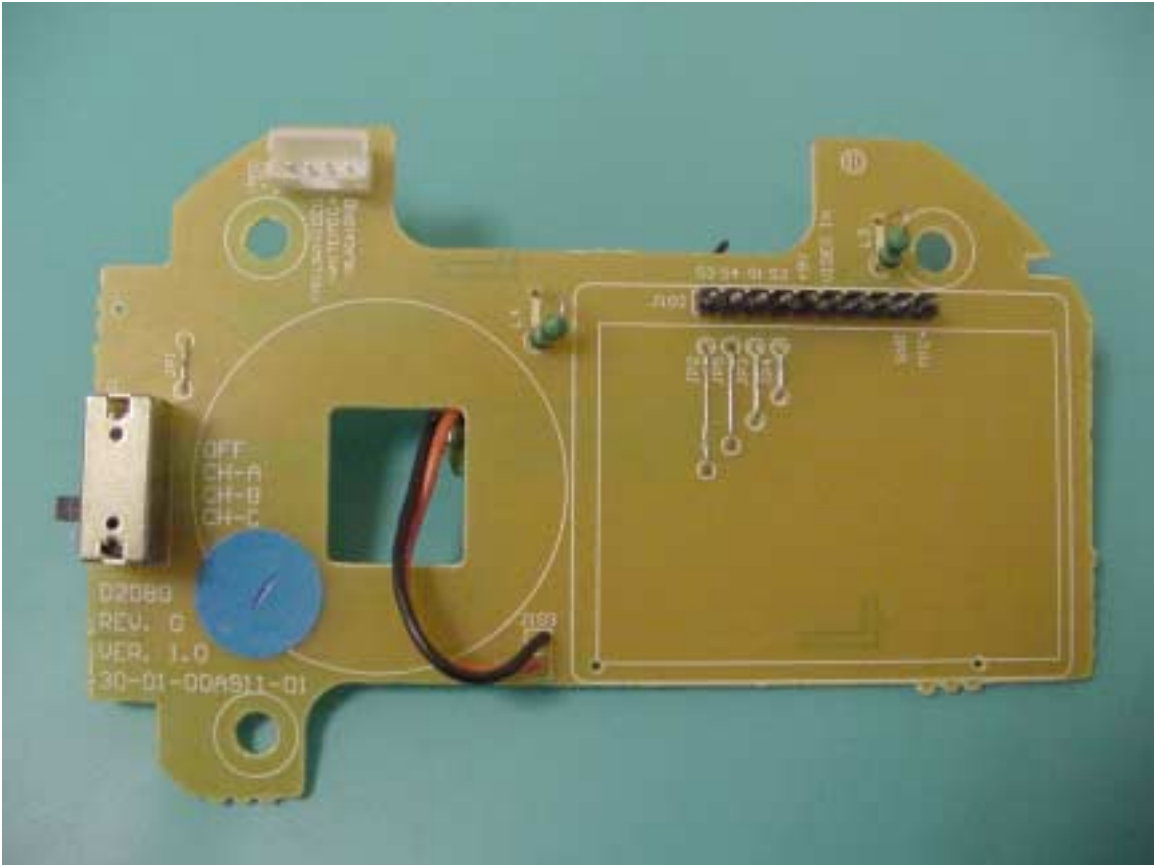
Solder Side view of main board. Antenna and power connector are visible.



Component Side View of main board with RF board attached.



Circuit Side of RF board, antenna connection is top center.

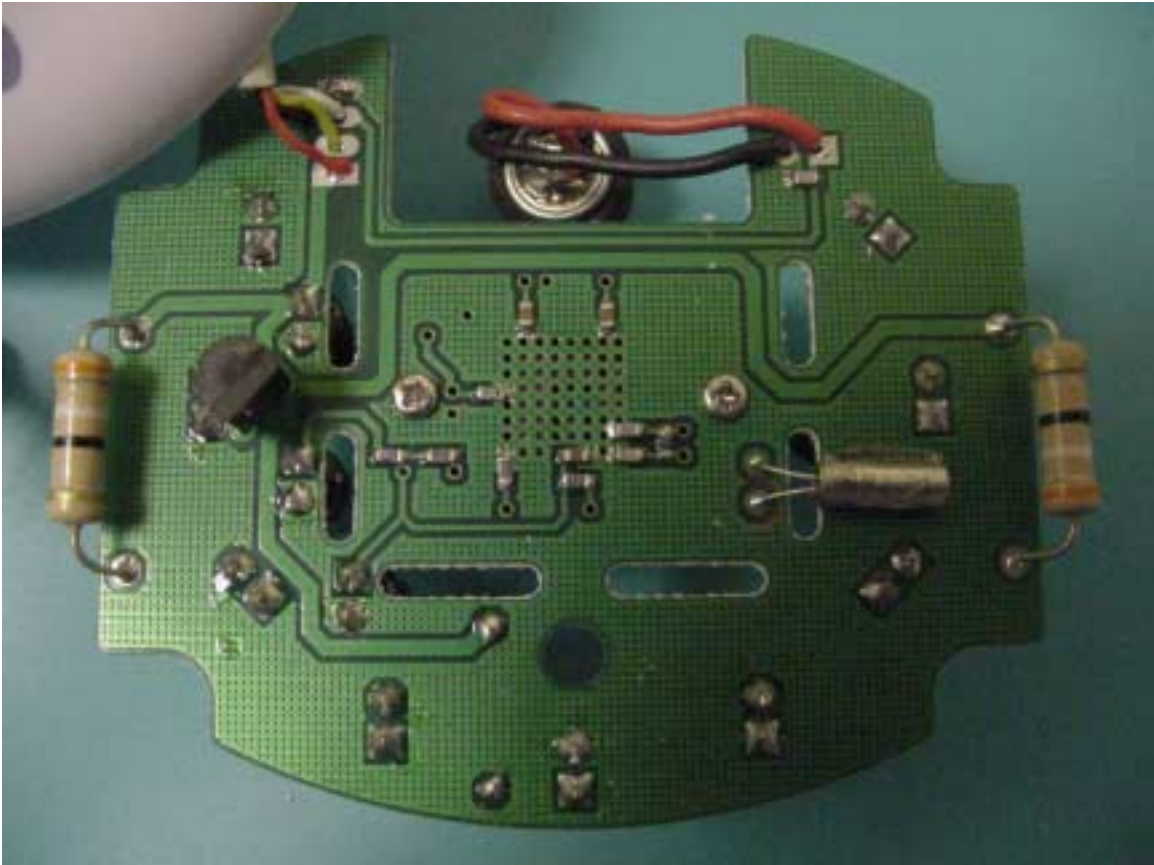


Component Side of Main Board with RF board removed.





Component Side of Video Board, microphone at top center.



Circuit Side of Video Board.