

SAR Compliance Test Report

| | | | |
|--|---|-------------------------|---|
| Test report no.: | FCC_RM-469_01 | Date of report: | 2009-10-27 |
| Template version: | 13.0 | Number of pages: | 26 |
| Testing laboratory: | TCC Nokia Salo Laboratory P.O.Box 86 Joensuunkatu 7H / Kiila 1B FIN-24101 SALO, FINLAND Tel. +358 (0) 7180 08000 Fax. +358 (0) 7180 45220 | Client: | Nokia Corporation P.O. Box 86 Joensuunkatu 7 FIN-24101 SALO, FINLAND Tel. +358 (0) 7180 08000 Fax. +358 (0) 7180 44277 |
| Responsible test engineer: | Janne Hirsimäki | Product contact person: | Lasse Vaattovaara |
| Measurements made by: | Heikki Kuusela, Alina Tähkäpää | | |
| Tested device: | RM-469 | | |
| FCC ID: | PYARM-469 | IC: | 661V-RM469 |
| Supplement reports: | SAR_Photo_RM-469_02, Salo_SAR_0925_13 | | |
| Testing has been carried out in accordance with: | 47CFR §2.1093 Radiofrequency Radiation Exposure Evaluation: Portable Devices FCC OET Bulletin 65 (Edition 97-01), Supplement C (Edition 01-01) Evaluating Compliance with FCC Guidelines for Human Exposure to Radiofrequency Electromagnetic Fields RSS-102 Evaluation Procedure for Mobile and Portable Radio Transmitters with Respect to Health Canada's Safety Code 6 for Exposure of Humans to Radio Frequency Fields IEEE 1528 - 2003 IEEE Recommended Practice for Determining the Peak Spatial-Average Specific Absorption Rate (SAR) in the Human Head from Wireless Communications Devices: Measurement Technique | | |
| Documentation: | The documentation of the testing performed on the tested devices is archived for 15 years at TCC Nokia. | | |
| Test results: | The tested device complies with the requirements in respect of all parameters subject to the test. The test results and statements relate only to the items tested. The test report shall not be reproduced except in full, without written approval of the laboratory. | | |
| Date and signatures: | | | |
| For the contents: | | | |

CONTENTS

| | |
|--|-----------|
| 1. SUMMARY OF SAR TEST REPORT..... | 3 |
| 1.1 TEST DETAILS..... | 3 |
| 1.2 MAXIMUM RESULTS..... | 3 |
| 1.2.1 Head Configuration..... | 3 |
| 1.2.2 Body Worn Configuration | 4 |
| 1.2.3 Maximum Drift | 4 |
| 1.2.4 Measurement Uncertainty | 4 |
| 2. DESCRIPTION OF THE DEVICE UNDER TEST | 5 |
| 2.1 DESCRIPTION OF THE ANTENNA | 5 |
| 3. TEST CONDITIONS | 5 |
| 3.1 TEMPERATURE AND HUMIDITY | 5 |
| 3.2 TEST SIGNAL, FREQUENCIES AND OUTPUT POWER | 5 |
| 3.3 TEST CASES AND TEST MINIMISATION | 6 |
| 4. DESCRIPTION OF THE TEST EQUIPMENT | 8 |
| 4.1 MEASUREMENT SYSTEM AND COMPONENTS | 8 |
| 4.1.1 Isotropic E-field Probe Type ET3DV6 | 9 |
| 4.1.2 Isotropic E-field Probe Type ES3DV3 | 10 |
| 4.2 PHANTOMS | 10 |
| 4.3 TISSUE SIMULANTS | 10 |
| 4.3.1 Tissue Simulant Recipes | 11 |
| 4.3.2 System Checking | 11 |
| 4.3.3 Tissue Simulants used in the Measurements..... | 12 |
| 5. DESCRIPTION OF THE TEST PROCEDURE | 13 |
| 5.1 DEVICE HOLDER..... | 13 |
| 5.2 TEST POSITIONS..... | 13 |
| 5.2.1 Against Phantom Head..... | 13 |
| 5.2.2 Body Worn Configuration | 13 |
| 5.3 SCAN PROCEDURES..... | 14 |
| 5.4 SAR AVERAGING METHODS..... | 14 |
| 6. MEASUREMENT UNCERTAINTY | 15 |
| 7. RESULTS | 16 |
| APPENDIX A: SYSTEM CHECKING SCANS..... | 19 |
| APPENDIX B: MEASUREMENT SCANS..... | 21 |
| APPENDIX C: RELEVANT PAGES FROM PROBE CALIBRATION REPORT(S) | 25 |
| APPENDIX D: RELEVANT PAGES FROM DIPOLE VALIDATION KIT REPORT(S) | 26 |

1. SUMMARY OF SAR TEST REPORT

1.1 Test Details

| | |
|--|---|
| Period of test | 2009-10-13 to 2009-10-14 |
| SN, HW and SW numbers of tested device | SN: 355216/03/327388/2, HW: 6020, SW: 021.013, DUT: 14269 |
| Batteries used in testing | BP-4L, DUT: 13615, 13616, 14266, 14267, 14268 |
| Headsets used in testing | - |
| Other accessories used in testing | - |
| State of sample | Prototype unit |
| Notes | - |

1.2 Maximum Results

The maximum measured SAR values for Head configuration and Body Worn configuration are given in section 1.2.1 and 1.2.2 respectively. The device conforms to the requirements of the standard(s) when the maximum measured SAR value is less than or equal to the limit.

1.2.1 Head Configuration

| Mode | Ch / f (MHz) | Conducted power | Position | Measured SAR value (1g avg) | Scaled* SAR value (1g avg) | SAR limit (1g avg) | Result |
|----------------------------|--------------|-----------------|--------------|-----------------------------|----------------------------|--------------------|---------------|
| 3-slot GPRS850 | 251 / 848.8 | 30.0 dBm | Right, Cheek | 0.746 W/kg | 0.84 W/kg | 1.6 W/kg | PASSED |
| 3-slot GPRS1900 | 810 / 1909.8 | 25.2 dBm | Left, Cheek | 0.539 W/kg | 0.60 W/kg | 1.6 W/kg | PASSED |
| WLAN2450** | 1 / 2412.0 | 16.0 dBm | Left, Cheek | 0.129 W/kg | 0.14 W/kg | 1.6 W/kg | PASSED |
| 3-slot GPRS850 + WLAN2450 | - | - | Right, Cheek | 0.809 W/kg | 0.91 W/kg | 1.6 W/kg | PASSED |
| 3-slot GPRS1900 + WLAN2450 | - | - | Left, Cheek | 0.668 W/kg | 0.75 W/kg | 1.6 W/kg | PASSED |

1.2.2 Body Worn Configuration

| Mode | Ch / f (MHz) | Conducted power | Separation distance | Measured SAR value (1g avg) | Scaled* SAR value (1g avg) | SAR limit (1g avg) | Result |
|----------------------------|--------------|-----------------|---------------------|-----------------------------|----------------------------|--------------------|---------------|
| 3-slot GPRS850 | 251 / 848.8 | 30.0 dBm | 2.2 cm | 0.485 W/kg | 0.54 W/kg | 1.6 W/kg | PASSED |
| 3-slot GPRS1900 | 810 / 1909.8 | 25.2 dBm | 2.2 cm | 0.239 W/kg | 0.27 W/kg | 1.6 W/kg | PASSED |
| WLAN2450** | 1 / 2412.0 | 16.0 dBm | 2.2 cm | 0.021 W/kg | 0.02 W/kg | 1.6 W/kg | PASSED |
| 3-slot GPRS850 + WLAN2450 | - | - | 2.2 cm | 0.506 W/kg | 0.57 W/kg | 1.6 W/kg | PASSED |
| 3-slot GPRS1900 + WLAN2450 | - | - | 2.2 cm | 0.260 W/kg | 0.29 W/kg | 1.6 W/kg | PASSED |

* SAR values are scaled up by 12% to cover measurement drift. As a consequence of this upwards correction of the SAR values, the contribution of measurement drift to the overall measurement uncertainty (Section 6) is reduced to zero.

**SAR data taken from Salo_SAR_0925_13.

1.2.3 Maximum Drift

| Maximum drift covered by 12% scaling up of the SAR values | Maximum drift during measurements |
|---|-----------------------------------|
| 0.5dB | 0.48 dB |

1.2.4 Measurement Uncertainty

| | |
|--------------------------------|---------|
| Expanded Uncertainty (k=2) 95% | ± 25.8% |
|--------------------------------|---------|

2. DESCRIPTION OF THE DEVICE UNDER TEST

| | |
|----------------------|-----------------------------------|
| Device category | Portable |
| Exposure environment | General population / uncontrolled |

| Modes of Operation | Bands | Modulation Mode | Duty Cycle | Transmitter Frequency Range (MHz) |
|--------------------|-------------|-----------------|------------|-----------------------------------|
| GSM | 850 1900 | GMSK | 1/8 | 824 – 849 1850 – 1910 |
| GPRS | 850 1900 | GMSK | 1/8 to 3/8 | 824 – 849 1850 – 1910 |
| EGPRS | 850 1900 | GMSK / 8PSK | 1/8 to 3/8 | 824 – 849 1850 – 1910 |
| BT | 2450 | GFSK | 1 | 2402 – 2480 |
| WLAN | 2450 | 11Mbps QPSK | 1 | 2412 – 2462 |

Outside of USA and Canada, the transmitter of the device is capable of operating also in GSM/GPRS/EGPRS900, GSM/GPRS/EGPRS1800, WCDMA900 and WCDMA2100 bands which are not part of this filing.

2.1 Description of the Antenna

The device has internal antennas for both cellular and WLAN use. The cellular antenna is located at the bottom underneath the back cover. The WLAN antenna is located at the top underneath the back cover.

3. TEST CONDITIONS

3.1 Temperature and Humidity

| | |
|---------------------------|--------------|
| Ambient temperature (°C): | 20.4 to 21.6 |
| Ambient humidity (RH %): | 39 to 44 |

3.2 Test Signal, Frequencies and Output Power

The device was put into operation by using a call tester. Communication between the device and the call tester was established by air link.

The device output power was set to maximum power level for all tests; a fully charged battery was used for every test sequence.

In all operating bands the measurements were performed on lowest, middle and highest channels.

The radiated output power of the device was measured by a separate test laboratory on the same unit(s) as used for SAR testing. The results are given in the EMC report supporting this application.

The testing reported in this document has been minimised based on the earlier report Salo_SAR_0925_13. Some of the SAR values presented have been taken from the same earlier report.

3.3 Test Cases and Test Minimisation

The tested device examined in this report may not incorporate all of the features described in the text that follows, but its SAR evaluation will have been subjected to the same considerations and test logic described below.

Whilst it's possible to identify the maximum SAR test cases from inspection of the conducted power levels given in the Results tables (Section 7), different modes in the same band and multi-slot transmit GSM/GPRS modes can create some difficulties. Therefore the sequence of the SAR tests made in evaluating this device has used test logic that is based on measured SAR values. Comparison of measured SAR values in this way, can also allow some test minimization (i.e. test elimination) to be made.

For example, when SAR testing multi-slot GSM/GPRS/EGPRS modes, it is an inefficient use of test resources to fully SAR test every test configuration in each of the different modes as these modes have a fixed power relationship between them that is the same, irrespective of the test configuration. In the case of multi-slot GSM/GPRS modes, a single comparative SAR test - using the same test channel and test configuration - is made in each of the n-slot modes; the mode with the highest measured SAR value is then subjected to full SAR testing in all test configurations. These comparative SAR tests (same frequency, same test configuration) are regarded as extremely accurate as they are relative tests in which the tested device changes neither its frequency nor its position between tests. For different modes that operate in the same band and use the same antenna e.g. GSM/GPRS850 and WCDMA850, full SAR testing is carried out in the GSM/GPRS850 mode but WCDMA850 testing is limited to 3 channel testing in the maximum SAR test configuration for GSM/GPRS850.

Multi-slot SAR testing against the Head is always performed whenever such a device offers Push to Talk over cellular with the internal earpiece active, Dual Transfer Mode (i.e. the ability to transmit voice and data simultaneously using the same transmitter) or has WLAN (which enables a Voice over IP call to take place whilst the device can simultaneously transmit data on a cellular band). Whenever a device has an intended multi-slot use against the head, it is also Head SAR tested in EGPRS mode. It should be noted that EGPRS transmit modes can have either GMSK or 8PSK modulation but, when tested, only 8PSK EGPRS will appear explicitly in the results tables, as GMSK EGPRS mode has identical time-averaged power to the reported GPRS mode.

Devices that have flips or slides are fully SAR tested in all device configurations consistent with their intended usage. For example, flip phones that can receive a call in closed mode are SAR tested against the head in both open and closed configurations. Similarly, slide phones are fully SAR tested in all slide configurations in which calls are intended to be made or received.

In the results tables in Section 7, the maximum SAR value for the 'basic' tests (i.e. left cheek, left tilt, right cheek and right tilt in Head SAR testing; with and without headset with the back &/or display side facing the flat phantom in Body SAR testing) is bolded for each band. In some cases, after full testing of the basic SAR test configurations has been completed, additional checking SAR tests are made. These checking tests are always based on the bolded result from the 'basic' testing. When the SAR value of a checking test exceeds the maximum value from the basic tests, it is also bolded and used as the basis for any further checking tests that might be needed.

Checking tests are largely voluntary and can cover optional batteries, different camera slide positions, optional covers, etc. In the case of optional batteries, if the construction of the optional battery is significantly different to the battery used in the full testing e.g. if the outer can is floating electrically rather than grounded, then the maximum SAR test configuration in each band is tested with the optional battery in 3 channels. For camera slides, if the slide material is metal, then checking tests in 3 channels are again run for the maximum SAR test configuration in each band. For plastic camera slides, SAR checking is only carried out in the channel that provided the maximum SAR value for the original. Optional front and back covers are tested if their shape differs significantly from the original or if their metallic content varies by more than 15% from the original; in the former case, the testing depends on the extent of the physical differences, whereas in the latter case, 3 channel SAR testing is performed in every band in the max SAR test configuration.

4. DESCRIPTION OF THE TEST EQUIPMENT

4.1 Measurement System and Components

The measurements were performed using an automated near-field scanning system, DASY4, manufactured by Schmid & Partner Engineering AG (SPEAG) in Switzerland. The SAR extrapolation algorithm used in all measurements was the 'advanced extrapolation' algorithm.

The following table lists calibration dates of SPEAG components:

| Test Equipment | Serial Number | Calibration interval | Calibration expiry |
|--------------------------------|---------------|----------------------|--------------------|
| DAE 4 | 793 | 12 months | 2010-05 |
| DAE 4 | 728 | 12 months | 2010-02 |
| E-field Probe ET3DV6 | 1766 | 12 months | 2009-11 |
| E-field Probe ES3DV3 | 3165 | 12 months | 2010-05 |
| Dipole Validation Kit, D835V2 | 462 | 24 months | 2010-01 |
| Dipole Validation Kit, D1900V2 | 5d030 | 24 months | 2010-01 |
| DASY4 software | Version 4.7 | - | - |

Additional test equipment used in testing:

| Test Equipment | Model | Serial Number | Calibration interval | Calibration expiry |
|-------------------------|--------------|---------------|----------------------|--------------------|
| Signal Generator | SML03 | 101265 | 12 months | 2010-09 |
| Amplifier | ZHL-42 (SMA) | N072095-5 | 12 months | 2010-09 |
| Power Meter | NRVS | 849305/028 | 12 months | 2010-09 |
| Power Sensor | NRV-Z32 | 839176/020 | 12 months | 2010-09 |
| Call Tester | CMU 200 | 101111 | - | - |
| Call Tester | CMU 200 | 103293 | - | - |
| Vector Network Analyzer | 8753E | US38432928 | 12 months | 2010-09 |
| Dielectric Probe Kit | 85070B | US33020420 | - | - |

4.1.1 Isotropic E-field Probe Type ET3DV6

| | |
|----------------------------------|--|
| Construction | Symmetrical design with triangular core Built-in optical fiber for surface detection system Built-in shielding against static charges PEEK enclosure material (resistant to organic solvents, e.g., butyl diglycol) |
| Calibration | Calibration certificate in Appendix C |
| Frequency | 10 MHz to 3 GHz (dosimetry); Linearity: ± 0.2 dB (30 MHz to 3 GHz) |
| Optical Surface Detection | ± 0.2 mm repeatability in air and clear liquids over diffuse reflecting surfaces |
| Directivity | ± 0.2 dB in HSL (rotation around probe axis) ± 0.4 dB in HSL (rotation normal to probe axis) |
| Dynamic Range | 5 μ W/g to > 100 mW/g; Linearity: ± 0.2 dB |
| Dimensions | Overall length: 330 mm Tip length: 16 mm Body diameter: 12 mm Tip diameter: 6.8 mm Distance from probe tip to dipole centers: 2.7 mm |
| Application | General dosimetry up to 3 GHz Compliance tests of mobile phones Fast automatic scanning in arbitrary phantoms |

4.1.2 Isotropic E-field Probe Type ES3DV3

| | |
|----------------------|--|
| Construction | Symmetrical design with triangular core Interleaved sensors Built-in shielding against static charges PEEK enclosure material (resistant to organic solvents, e.g., butyl diglycol) |
| Calibration | Calibration certificate in Appendix C |
| Frequency | 10 MHz to 4 GHz (dosimetry); Linearity: ± 0.2 dB (30 MHz to 4 GHz) |
| Directivity | ± 0.2 dB in HSL (rotation around probe axis) ± 0.3 dB in HSL (rotation normal to probe axis) |
| Dynamic Range | 5 μ W/g to > 100 mW/g; Linearity: ± 0.2 dB |
| Dimensions | Overall length: 330 mm Tip length: 20 mm Body diameter: 12 mm Tip diameter: 3.9 mm Distance from probe tip to dipole centers: 2.0 mm |
| Application | General dosimetry up to 4 GHz Compliance tests of mobile phones Fast automatic scanning in arbitrary phantoms |

4.2 Phantoms

The phantom used for all tests i.e. for both system checks and device testing, was the twin-headed "SAM Phantom", manufactured by SPEAG. The phantom conforms to the requirements of IEEE 1528 - 2003.

System checking was performed using the flat section, whilst Head SAR tests used the left and right head profile sections. Body SAR testing also used the flat section between the head profiles.

The SPEAG device holder (see Section 5.1) was used to position the device in all tests whilst a tripod was used to position the validation dipoles against the flat section of phantom.

4.3 Tissue Simulants

Recommended values for the dielectric parameters of the tissue simulants are given in IEEE 1528 - 2003 and FCC Supplement C to OET Bulletin 65. All tests were carried out using simulants whose dielectric parameters were within $\pm 5\%$ of the recommended values. All tests were carried out within 24 hours of measuring the dielectric parameters.

The depth of the tissue simulant was 15.0 ± 0.5 cm measured from the ear reference point during system checking and device measurements.

4.3.1 Tissue Simulant Recipes

The following recipe(s) were used for Head and Body tissue simulant(s):

800MHz band

| Ingredient | Head (% by weight) | Body (% by weight) |
|-----------------|-----------------------|-----------------------|
| Deionised Water | 51.50 | 69.25 |
| Tween 20 | 47.35 | 30.00 |
| Salt | 1.15 | 0.75 |

1900MHz band

| Ingredient | Head (% by weight) | Body (% by weight) |
|-----------------|-----------------------|-----------------------|
| Deionised Water | 54.50 | 70.25 |
| Tween 20 | 45.23 | 29.41 |
| Salt | 0.27 | 0.34 |

4.3.2 System Checking

The manufacturer calibrates the probes annually. Dielectric parameters of the tissue simulants were measured every day using the dielectric probe kit and the network analyser. A system check measurement was made following the determination of the dielectric parameters of the simulant, using the dipole validation kit. A power level of 250 mW was supplied to the dipole antenna, which was placed under the flat section of the twin SAM phantom. The system checking results (dielectric parameters and SAR values) are given in the table below.

System checking, head tissue simulant

| f [MHz] | Description | SAR [W/kg], 1g | Dielectric Parameters | | Temp [°C] |
|---------|-------------------|-------------------|-----------------------|----------------|--------------|
| | | | ϵ_r | σ [S/m] | |
| 835 | Reference result | 2.42 | 43.0 | 0.92 | |
| | $\pm 10\%$ window | 2.18 – 2.66 | | | |
| | 2009-10-13 | 2.43 | 40.9 | 0.90 | 21.0 |
| 1900 | Reference result | 10.2 | 38.5 | 1.46 | |
| | $\pm 10\%$ window | 9.2 – 11.2 | | | |
| | 2009-10-14 | 9.22 | 38.3 | 1.43 | 21.0 |

Plots of the system checking scans are given in Appendix A.

4.3.3 Tissue Simulants used in the Measurements

Head tissue simulant measurements

| f [MHz] | Description | Dielectric Parameters | | Temp [°C] |
|------------|-------------------|-----------------------|----------------|--------------|
| | | ϵ_r | σ [S/m] | |
| 836 | Recommended value | 41.5 | 0.90 | 21.0 |
| | $\pm 5\%$ window | 39.4 – 43.6 | 0.86 – 0.95 | |
| | 2009-10-13 | 40.9 | 0.91 | |
| 1880 | Recommended value | 40.0 | 1.40 | 21.0 |
| | $\pm 5\%$ window | 38.0 – 42.0 | 1.33 – 1.47 | |
| | 2009-10-14 | 38.4 | 1.41 | |

Body tissue simulant measurements

| f [MHz] | Description | Dielectric Parameters | | Temp [°C] |
|------------|-------------------|-----------------------|----------------|--------------|
| | | ϵ_r | σ [S/m] | |
| 836 | Recommended value | 55.2 | 0.97 | 21.0 |
| | $\pm 5\%$ window | 52.4 – 58.0 | 0.92 – 1.02 | |
| | 2009-10-13 | 53.4 | 0.98 | |
| 1880 | Recommended value | 53.3 | 1.52 | 21.0 |
| | $\pm 5\%$ window | 50.6 – 56.0 | 1.44 – 1.60 | |
| | 2009-10-14 | 51.8 | 1.52 | |

5. DESCRIPTION OF THE TEST PROCEDURE

5.1 Device Holder

The device was placed in the device holder (illustrated below) that is supplied by SPEAG as an integral part of the Dasy system.



Device holder supplied by SPEAG

A Nokia designed spacer (illustrated below) was used to position the device within the SPEAG holder. The spacer positions the device so that the holder has minimal effect on the test results but still holds the device securely. The spacer was removed before the tests.



Nokia spacer

5.2 Test Positions

5.2.1 Against Phantom Head

Measurements were made in “cheek” and “tilt” positions on both the left hand and right hand sides of the phantom.

The positions used in the measurements were according to IEEE 1528 - 2003 "IEEE Recommended Practice for Determining the Peak Spatial-Average Specific Absorption Rate (SAR) in the Human Head from Wireless Communications Devices: Measurement Techniques".

5.2.2 Body Worn Configuration

The device was placed in the SPEAG holder using the Nokia spacer and placed below the flat section of the phantom. The distance between the device and the phantom was kept at the

separation distance indicated in Section 1.2.2 using a separate flat spacer that was removed before the start of the measurements.

5.3 Scan Procedures

First, area scans were used for determination of the field distribution. Next, a zoom scan, a minimum of 5x5x7 points covering a volume of at least 30x30x30mm, was performed around the highest E-field value to determine the averaged SAR value. Drift was determined by measuring the same point at the start of the area scan and again at the end of the zoom scan.

5.4 SAR Averaging Methods

The maximum SAR value was averaged over a cube of tissue using interpolation and extrapolation.

The interpolation, extrapolation and maximum search routines within Dasy4 are all based on the modified Quadratic Shepard's method (Robert J. Renka, "Multivariate Interpolation Of Large Sets Of Scattered Data", University of North Texas ACM Transactions on Mathematical Software, vol. 14, no. 2, June 1988, pp. 139-148).

The interpolation scheme combines a least-square fitted function method with a weighted average method. A trivariate 3-D / bivariate 2-D quadratic function is computed for each measurement point and fitted to neighbouring points by a least-square method. For the zoom scan, inverse distance weighting is incorporated to fit distant points more accurately. The interpolating function is finally calculated as a weighted average of the quadratics.

In the zoom scan, the interpolation function is used to extrapolate the Peak SAR from the deepest measurement points to the inner surface of the phantom.

6. MEASUREMENT UNCERTAINTY

Table 6.1 – Measurement uncertainty evaluation

| Uncertainty Component | Section in IEEE 1528 | Tol. (%) | Prob Dist | Div | C_i | $C_i \cdot U_i$ (%) | V_i |
|---|----------------------|----------|-----------|-----|-----------------|---------------------|-------|
| Measurement System | | | | | | | |
| Probe Calibration | E2.1 | ±5.9 | N | 1 | 1 | ±5.9 | ∞ |
| Axial Isotropy | E2.2 | ±4.7 | R | √3 | $(1-c_p)^{1/2}$ | ±1.9 | ∞ |
| Hemispherical Isotropy | E2.2 | ±9.6 | R | √3 | $(c_p)^{1/2}$ | ±3.9 | ∞ |
| Boundary Effect | E2.3 | ±1.0 | R | √3 | 1 | ±0.6 | ∞ |
| Linearity | E2.4 | ±4.7 | R | √3 | 1 | ±2.7 | ∞ |
| System Detection Limits | E2.5 | ±1.0 | R | √3 | 1 | ±0.6 | ∞ |
| Readout Electronics | E2.6 | ±1.0 | N | 1 | 1 | ±1.0 | ∞ |
| Response Time | E2.7 | ±0.8 | R | √3 | 1 | ±0.5 | ∞ |
| Integration Time | E2.8 | ±2.6 | R | √3 | 1 | ±1.5 | ∞ |
| RF Ambient Conditions - Noise | E6.1 | ±3.0 | R | √3 | 1 | ±1.7 | ∞ |
| RF Ambient Conditions - Reflections | E6.1 | ±3.0 | R | √3 | 1 | ±1.7 | ∞ |
| Probe Positioner Mechanical Tolerance | E6.2 | ±0.4 | R | √3 | 1 | ±0.2 | ∞ |
| Probe Positioning with respect to Phantom Shell | E6.3 | ±2.9 | R | √3 | 1 | ±1.7 | ∞ |
| Extrapolation, interpolation and Integration Algorithms for Max. SAR Evaluation | E5 | ±3.9 | R | √3 | 1 | ±2.3 | ∞ |
| Test sample Related | | | | | | | |
| Test Sample Positioning | E4.2 | ±6.0 | N | 1 | 1 | ±6.0 | 11 |
| Device Holder Uncertainty | E4.1 | ±5.0 | N | 1 | 1 | ±5.0 | 7 |
| Output Power Variation - SAR drift measurement | 6.6.3 | ±0.0 | R | √3 | 1 | ±0.0 | ∞ |
| Phantom and Tissue Parameters | | | | | | | |
| Phantom Uncertainty (shape and thickness tolerances) | E3.1 | ±4.0 | R | √3 | 1 | ±2.3 | ∞ |
| Conductivity Target - tolerance | E3.2 | ±5.0 | R | √3 | 0.64 | ±1.8 | ∞ |
| Conductivity - measurement uncertainty | E3.3 | ±5.5 | N | 1 | 0.64 | ±3.5 | 5 |
| Permittivity Target - tolerance | E3.2 | ±5.0 | R | √3 | 0.6 | ±1.7 | ∞ |
| Permittivity - measurement uncertainty | E3.3 | ±2.9 | N | 1 | 0.6 | ±1.7 | 5 |
| Combined Standard Uncertainty | | | RSS | | | ±12.9 | 116 |
| Coverage Factor for 95% | | | k=2 | | | | |
| Expanded Uncertainty | | | | | | ±25.8 | |

7. RESULTS

The measured Head SAR values for the test device are tabulated below:

850MHz Head SAR results

| Mode | Test configuration | | SAR, averaged over 1g (W/kg) | | |
|-------------|--------------------|-------|------------------------------|---------------------|---------------------|
| | | | Ch 128 824.2 MHz | Ch 190 836.6 MHz | Ch 251 848.8 MHz |
| 3-slot GPRS | Conducted Power | | 30.0 dBm | 30.0 dBm | 30.0 dBm |
| | Left | Cheek | - | - | - |
| | | Tilt | - | - | - |
| | Right | Cheek | 0.559 | 0.599 | 0.746 |
| | | Tilt | - | - | - |

1900MHz Head SAR results

| Mode | Test configuration | | SAR, averaged over 1g (W/kg) | | |
|-------------|--------------------|-------|------------------------------|----------------------|----------------------|
| | | | Ch 512 1850.2 MHz | Ch 661 1880.0 MHz | Ch 810 1909.8 MHz |
| 3-slot GPRS | Conducted Power | | 25.2 dBm | 25.2 dBm | 25.2 dBm |
| | Left | Cheek | 0.536 | 0.513 | 0.539 |
| | | Tilt | - | - | - |
| | Right | Cheek | - | - | - |
| | | Tilt | - | - | - |

2450MHz Head SAR results**

| Mode | Test configuration | | SAR, averaged over 1g (W/kg) | | |
|------|--------------------|-------|------------------------------|--------------------|---------------------|
| | | | Ch 1 2412.0 MHz | Ch 7 2442.0 MHz | Ch 11 2462.0 MHz |
| WLAN | Conducted Power | | 16.0 dBm | 16.0 dBm | 16.0 dBm |
| | Left | Cheek | 0.129 | 0.087 | 0.074 |
| | | Tilt | - | 0.067 | - |
| | Right | Cheek | - | 0.063 | - |
| | | Tilt | - | 0.058 | - |

The measured Body SAR values for the test device are tabulated below:

850MHz Body SAR results

| Mode | Device orientation | Test configuration | SAR, averaged over 1g (W/kg) | | |
|-------------|------------------------|--------------------|------------------------------|---------------------|---------------------|
| | | | Ch 128 824.2 MHz | Ch 190 836.6 MHz | Ch 251 848.8 MHz |
| 3-slot GPRS | | Conducted Power | 30.0 dBm | 30.0 dBm | 30.0 dBm |
| | Display facing phantom | Without headset | - | - | - |
| | | Headset HS-48 | - | - | - |
| | Back facing phantom | Without headset | 0.285 | 0.351 | 0.485 |
| | | Headset HS-48 | - | - | - |

1900MHz Body SAR results

| Mode | Device orientation | Test configuration | SAR, averaged over 1g (W/kg) | | |
|-------------|------------------------|--------------------|------------------------------|----------------------|----------------------|
| | | | Ch 512 1850.2 MHz | Ch 661 1880.0 MHz | Ch 810 1909.8 MHz |
| 3-slot GPRS | | Conducted Power | 25.2 dBm | 25.2 dBm | 25.2 dBm |
| | Display facing phantom | Without headset | - | - | - |
| | | Headset HS-48 | - | - | - |
| | Back facing phantom | Without headset | 0.188 | 0.227 | 0.239 |
| | | Headset HS-48 | - | - | - |

2450MHz Body SAR results**

| Mode | Device orientation | Test configuration | SAR, averaged over 1g (W/kg) | | |
|-------------|------------------------|------------------------|------------------------------|--------------------|---------------------|
| | | | Ch 1 2412.0 MHz | Ch 7 2442.0 MHz | Ch 11 2462.0 MHz |
| WLAN | | Conducted Power | 16.0 dBm | 16.0 dBm | 16.0 dBm |
| | Display facing phantom | Without headset | - | - | - |
| | | Headset HS-48 | - | - | - |
| | Back facing phantom | Without headset | 0.021 | 0.015 | 0.013 |
| | | Headset HS-48 | - | 0.011 | - |

Simultaneous transmissions: Combined SAR results

| Test configuration | Max. 1g SAR results | | | Combined 1g SAR values | |
|-----------------------|---------------------|-----------------|------------------|------------------------|------------------------|
| | WLAN** | 3-slot GPRS 850 | 3-slot GPRS 1900 | WLAN + 3-slot GPRS850 | WLAN + 3-slot GPRS1900 |
| Head: Left, Cheek | 0.129 | - | 0.539 | - | 0.668 |
| Head: Left, Tilt | 0.067 | - | - | - | - |
| Head: Right, Cheek | 0.063 | 0.746 | - | 0.809 | - |
| Head: Right, Tilt | 0.058 | - | - | - | - |
| Body: Without Headset | 0.021 | 0.485 | 0.239 | 0.506 | 0.260 |
| Body: Headset HS-48 | 0.011 | - | - | - | - |

**SAR data taken from Salo_SAR_0925_13.

Combining the maximum SAR values of WLAN2450 and the cellular bands tends to overestimate the SAR value since their maxima do not necessarily occur in the same location.

Note: Simultaneous Transmission Procedures as described in KDB648474 are not required for this product. The Combined SAR data given in the tables above has been voluntarily calculated.

Plots of the Measurement scans are given in Appendix B.

APPENDIX A: SYSTEM CHECKING SCANS

Date/Time: 2009-10-13 07:52:30

Test Laboratory: TCC Nokia

Type: D835V2; Serial: D835V2 - SN:462

Communication System: CW835

Frequency: 835 MHz; Duty Cycle: 1:1

Medium: HSL850; Medium Notes: t=20.4 C

Medium parameters used: $f = 835$ MHz; $\sigma = 0.905$ mho/m; $\epsilon_r = 40.9$; $\rho = 1000$ kg/m³

Phantom section: Flat Section

DASY4 Configuration:

- Probe: ET3DV6 - SN1766
- ConvF(5.82, 5.82, 5.82); Calibrated: 2008-11-10
- Sensor-Surface: 4mm (Mechanical Surface Detection)
- Electronics: DAE4 Sn728; Calibrated: 2009-02-09
- Phantom: SAM 3; Type: Twin SAM 040 CA; Serial: TP-1179
- Measurement SW: DASY4, V4.7 Build 55; Postprocessing SW: SEMCAD, V1.8 Build 176

d=15mm, Pin=250mW/Area Scan (61x81x1): Measurement grid: dx=15mm, dy=15mm

Maximum value of SAR (interpolated) = 2.62 mW/g

d=15mm, Pin=250mW/Zoom Scan (7x7x7)/Cube 0: Measurement grid: dx=5mm, dy=5mm, dz=5mm

Reference Value = 55.7 V/m

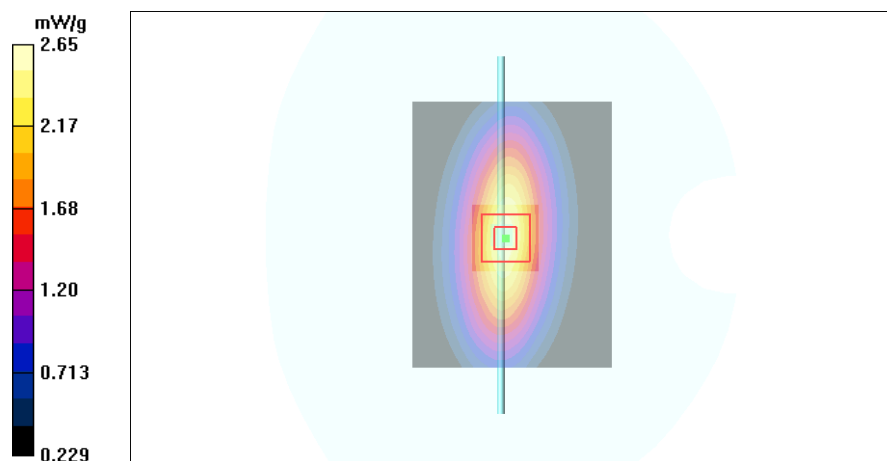
Peak SAR (extrapolated) = 3.59 W/kg

SAR(1 g) = 2.43 mW/g

SAR(10 g) = 1.58 mW/g

Power Drift = 0.024 dB

Maximum value of SAR (measured) = 2.65 mW/g



Date/Time: 2009-10-14 08:36:54

Test Laboratory: TCC Nokia

Type: D1900V2; Serial: D1900V2 - SN:5d030

Communication System: CW1900

Frequency: 1900 MHz; Duty Cycle: 1:1

Medium: HSL1900; Medium Notes: 20,5 C

Medium parameters used: $f = 1900$ MHz; $\sigma = 1.43$ mho/m; $\epsilon_r = 38.3$; $\rho = 1000$ kg/m³

Phantom section: Flat Section

DASY4 Configuration:

- Probe: ES3DV3 - SN3165
- ConvF(5, 5, 5); Calibrated: 2009-05-25
- Sensor-Surface: 4mm (Mechanical Surface Detection)
- Electronics: DAE4 Sn793; Calibrated: 2009-05-15
- Phantom: SAM 4; Type: Twin SAM 040 CA; Serial: TP-1018
- Measurement SW: DASY4, V4.7 Build 55; Postprocessing SW: SEMCAD, V1.8 Build 176

d=15mm, Pin=250mW/Area Scan (61x81x1): Measurement grid: dx=15mm, dy=15mm

Maximum value of SAR (interpolated) = 11.1 mW/g

d=15mm, Pin=250mW/Zoom Scan (7x7x7)/Cube 0: Measurement grid: dx=5mm, dy=5mm, dz=5mm

Reference Value = 86.9 V/m

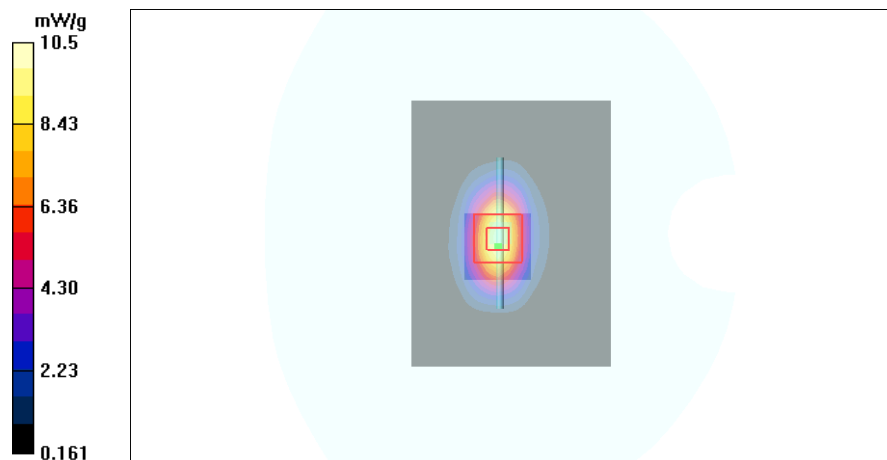
Peak SAR (extrapolated) = 17.1 W/kg

SAR(1 g) = 9.22 mW/g

SAR(10 g) = 4.78 mW/g

Power Drift = -0.003 dB

Maximum value of SAR (measured) = 10.5 mW/g



APPENDIX B: MEASUREMENT SCANS

Date/Time: 2009-10-13 12:20:19

Test Laboratory: TCC Nokia

Type: RM-469; Serial: 355216/03/327388/2

Communication System: 3-slot GPRS850

Frequency: 848.8 MHz; Duty Cycle: 1:2.8

Medium: HSL850; Medium Notes: t=20.4 C

Medium parameters used: $f = 849 \text{ MHz}$; $\sigma = 0.915 \text{ mho/m}$; $\epsilon_r = 40.8$; $\rho = 1000 \text{ kg/m}^3$

Phantom section: Right Section

DASY4 Configuration:

- Probe: ET3DV6 - SN1766
- ConvF(5.82, 5.82, 5.82); Calibrated: 2008-11-10
- Sensor-Surface: 4mm (Mechanical Surface Detection (Locations From Previous Scan Used))Sensor-Surface: 4mm (Mechanical Surface Detection)
- Electronics: DAE4 Sn728; Calibrated: 2009-02-09
- Phantom: SAM 3; Type: Twin SAM 040 CA; Serial: TP-1179
- Measurement SW: DASY4, V4.7 Build 55; Postprocessing SW: SEMCAD, V1.8 Build 176

Cheek - High/Area Scan (51x91x1): Measurement grid: dx=15mm, dy=15mm

Maximum value of SAR (interpolated) = 0.853 mW/g

Cheek - High/Zoom Scan (5x5x7)/Cube 0: Measurement grid: dx=7.5mm, dy=7.5mm, dz=5mm

Reference Value = 11.7 V/m

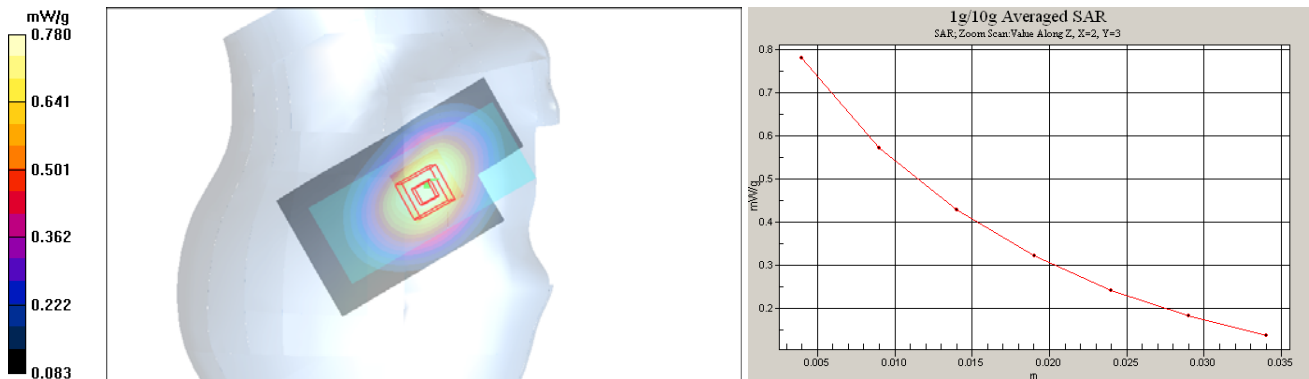
Peak SAR (extrapolated) = 1.01 W/kg

SAR(1 g) = 0.746 mW/g

SAR(10 g) = 0.545 mW/g

Power Drift = -0.353 dB

Maximum value of SAR (measured) = 0.780 mW/g



Date/Time: 2009-10-14 14:06:49

Test Laboratory: TCC Nokia

Type: RM-469; Serial: 355216/03/327388/2

Communication System: 3-slot GPRS1900

Frequency: 1909.8 MHz; Duty Cycle: 1:2.8

Medium: HSL1900; Medium Notes: 20,5 C

Medium parameters used: $f = 1910$ MHz; $\sigma = 1.44$ mho/m; $\epsilon_r = 38.3$; $\rho = 1000$ kg/m³

Phantom section: Left Section

DASY4 Configuration:

- Probe: ES3DV3 - SN3165

- ConvF(5, 5, 5); Calibrated: 2009-05-25

- Sensor-Surface: 4mm (Mechanical Surface Detection (Locations From Previous Scan Used))Sensor-Surface: 4mm (Mechanical Surface Detection)

- Electronics: DAE4 Sn793; Calibrated: 2009-05-15

- Phantom: SAM 4; Type: Twin SAM 040 CA; Serial: TP-1018

- Measurement SW: DASY4, V4.7 Build 55; Postprocessing SW: SEMCAD, V1.8 Build 176

Cheek - High/Area Scan (51x91x1): Measurement grid: dx=15mm, dy=15mm

Maximum value of SAR (interpolated) = 0.595 mW/g

Cheek - High/Zoom Scan (5x5x7)/Cube 0: Measurement grid: dx=7.5mm, dy=7.5mm, dz=5mm

Reference Value = 6.91 V/m

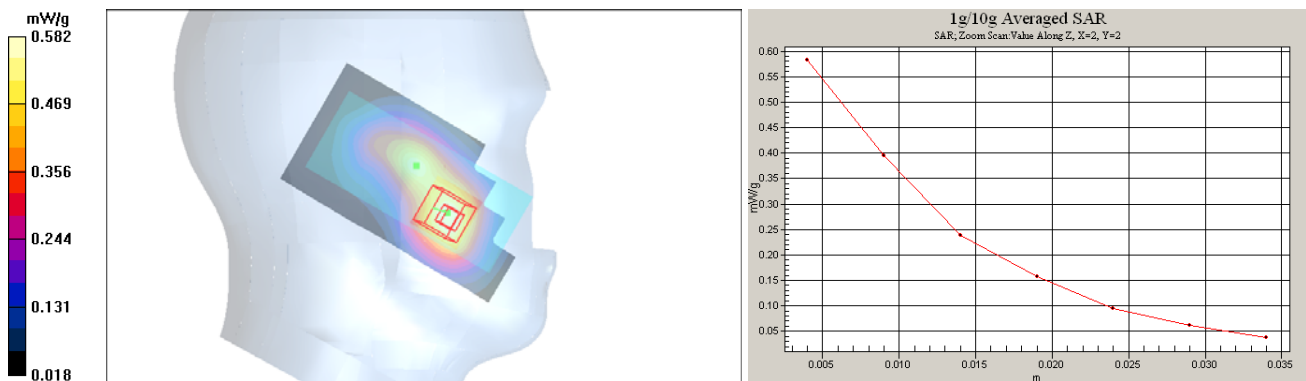
Peak SAR (extrapolated) = 0.789 W/kg

SAR(1 g) = 0.539 mW/g

SAR(10 g) = 0.338 mW/g

Power Drift = -0.037 dB

Maximum value of SAR (measured) = 0.582 mW/g



SAR Report

FCC_RM-469_01

Applicant: Nokia Corporation

Type: RM-469

Copyright © 2009 TCC Nokia

Date/Time: 2009-10-13 11:25:35

Test Laboratory: TCC Nokia

Type: RM-469; Serial: 355216/03/327388/2

Communication System: 3-slot GPRS850

Frequency: 848.8 MHz; Duty Cycle: 1:2.8

Medium: BSL850; Medium Notes: t=20.6 C

Medium parameters used: $f = 849 \text{ MHz}$; $\sigma = 0.991 \text{ mho/m}$; $\epsilon_r = 53.3$; $\rho = 1000 \text{ kg/m}^3$

Phantom section: Flat Section

DASY4 Configuration:

- Probe: ET3DV6 - SN1766

- ConvF(5.7, 5.7, 5.7); Calibrated: 2008-11-10

- Sensor-Surface: 4mm (Mechanical Surface Detection (Locations From Previous Scan Used))Sensor-Surface: 4mm (Mechanical Surface Detection)

- Electronics: DAE4 Sn728; Calibrated: 2009-02-09

- Phantom: SAM 1; Type: Twin SAM 040 CA; Serial: TP-1179

- Measurement SW: DASY4, V4.7 Build 55; Postprocessing SW: SEMCAD, V1.8 Build 176

Body - High - No Accessory - Back Facing Phantom/Area Scan (51x91x1): Measurement grid: $dx=15\text{mm}$, $dy=15\text{mm}$

Maximum value of SAR (interpolated) = 0.496 mW/g

Body - High - No Accessory - Back Facing Phantom/Zoom Scan (5x5x7)/Cube 0: Measurement grid: $dx=7.5\text{mm}$, $dy=7.5\text{mm}$, $dz=5\text{mm}$

Reference Value = 10.0 V/m

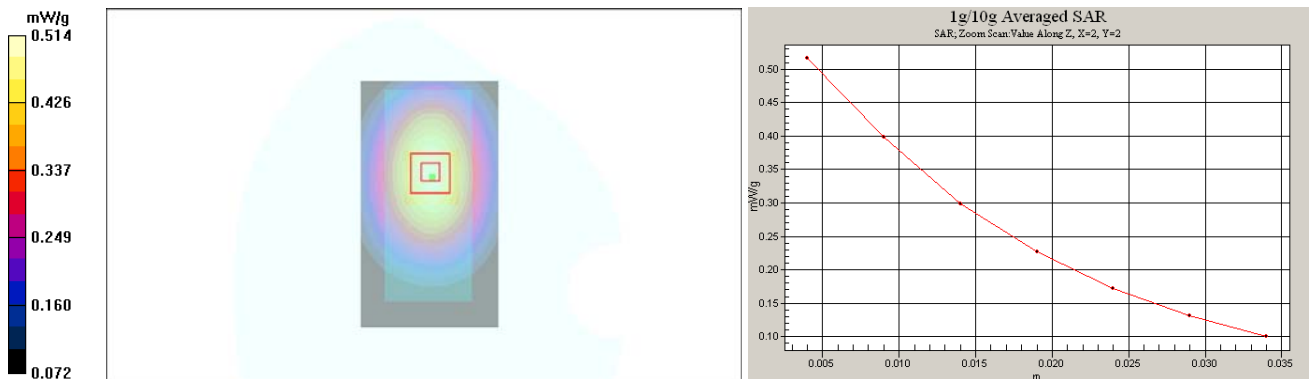
Peak SAR (extrapolated) = 0.611 W/kg

SAR(1 g) = 0.485 mW/g

SAR(10 g) = 0.356 mW/g

Power Drift = 0.069 dB

Maximum value of SAR (measured) = 0.514 mW/g



SAR Report

FCC_RM-469_01

Applicant: Nokia Corporation

Type: RM-469

Copyright © 2009 TCC Nokia

Date/Time: 2009-10-14 11:57:57

Test Laboratory: TCC Nokia

Type: RM-469; Serial: 355216/03/327388/2

Communication System: 3-slot GPRS1900

Frequency: 1909.8 MHz; Duty Cycle: 1:2.8

Medium: BSL1900; Medium Notes: 20,0 C

Medium parameters used: $f = 1910$ MHz; $\sigma = 1.55$ mho/m; $\epsilon_r = 51.7$; $\rho = 1000$ kg/m³

Phantom section: Flat Section

DASY4 Configuration:

- Probe: ES3DV3 - SN3165

- ConvF(4.6, 4.6, 4.6); Calibrated: 2009-05-25

- Sensor-Surface: 4mm (Mechanical Surface Detection (Locations From Previous Scan Used))Sensor-Surface: 4mm (Mechanical Surface Detection)

- Electronics: DAE4 Sn793; Calibrated: 2009-05-15

- Phantom: SAM 3; Type: Twin SAM 040 CA; Serial: TP-1179

- Measurement SW: DASY4, V4.7 Build 55; Postprocessing SW: SEMCAD, V1.8 Build 176

Body - High - No Accessory - Back Facing Phantom/Area Scan (51x91x1): Measurement grid: dx=15mm, dy=15mm

Maximum value of SAR (interpolated) = 0.264 mW/g

Body - High - No Accessory - Back Facing Phantom/Zoom Scan (5x5x7)/Cube 0: Measurement grid: dx=7.5mm, dy=7.5mm, dz=5mm

Reference Value = 9.10 V/m

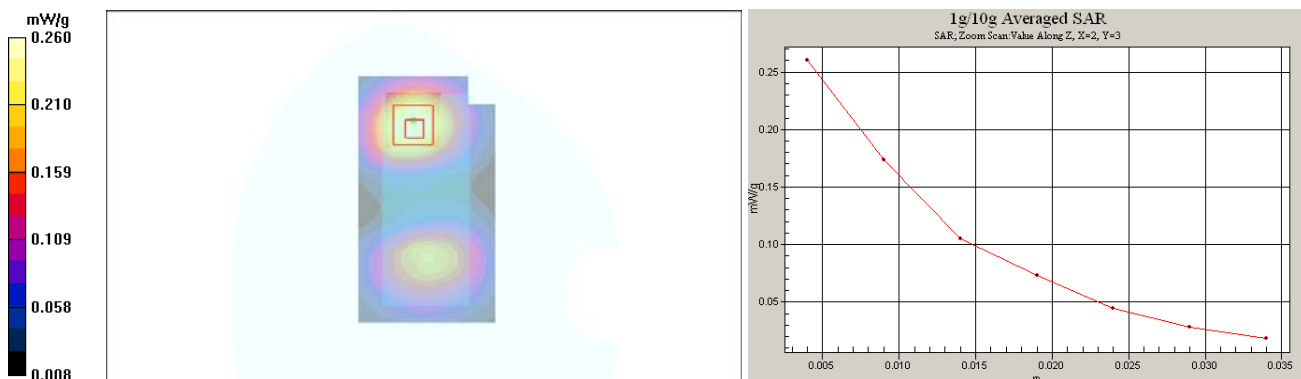
Peak SAR (extrapolated) = 0.352 W/kg

SAR(1 g) = 0.239 mW/g

SAR(10 g) = 0.150 mW/g

Power Drift = 0.010 dB

Maximum value of SAR (measured) = 0.260 mW/g



SAR Report

FCC_RM-469_01

Applicant: Nokia Corporation

Type: RM-469

Copyright © 2009 TCC Nokia

APPENDIX C: RELEVANT PAGES FROM PROBE CALIBRATION REPORT(S)



Accredited by the Swiss Accreditation Service (SAS)
 The Swiss Accreditation Service is one of the signatories to the EA
 Multilateral Agreement for the recognition of calibration certificates

Accreditation No.: **SCS 108**

Client **Nokia Salo TCC**

Certificate No: **ET3-1766_Nov08**

CALIBRATION CERTIFICATE

Object **ET3DV6 - SN:1766**

Calibration procedure(s) **QA CAL-01.v6 and QA CAL-23.v3**
Calibration procedure for dosimetric E-field probes

Calibration date: **November 10, 2008**

Condition of the calibrated item **In Tolerance**

This calibration certificate documents the traceability to national standards, which realize the physical units of measurements (SI).
 The measurements and the uncertainties with confidence probability are given on the following pages and are part of the certificate.

All calibrations have been conducted in the closed laboratory facility: environment temperature $(22 \pm 3)^{\circ}\text{C}$ and humidity $< 70\%$.

Calibration Equipment used (M&TE critical for calibration)

| Primary Standards | ID # | Cal Date (Certificate No.) | Scheduled Calibration |
|----------------------------|-----------------|-------------------------------|-----------------------|
| Power meter E4419B | GB41293874 | 1-Apr-08 (No. 217-00788) | Apr-09 |
| Power sensor E4412A | MY41495277 | 1-Apr-08 (No. 217-00788) | Apr-09 |
| Power sensor E4412A | MY41498087 | 1-Apr-08 (No. 217-00788) | Apr-09 |
| Reference 3 dB Attenuator | SN: S5054 (3c) | 1-Jul-08 (No. 217-00865) | Jul-09 |
| Reference 20 dB Attenuator | SN: S5086 (20b) | 31-Mar-08 (No. 217-00787) | Apr-09 |
| Reference 30 dB Attenuator | SN: S5129 (30b) | 1-Jul-08 (No. 217-00866) | Jul-09 |
| Reference Probe ES3DV2 | SN: 3013 | 2-Jan-08 (No. ES3-3013_Jan08) | Jan-09 |
| DAE4 | SN: 660 | 9-Sep-08 (No. DAE4-660_Sep08) | Sep-09 |

| Secondary Standards | ID # | Check Date (in house) | Scheduled Check |
|---------------------------|--------------|-----------------------------------|------------------------|
| RF generator HP 8648C | US3642U01700 | 4-Aug-99 (in house check Oct-07) | In house check: Oct-09 |
| Network Analyzer HP 8753E | US37390585 | 18-Oct-01 (in house check Oct-08) | In house check: Oct-09 |

| | Name | Function | Signature |
|----------------|---------------|-------------------|-----------|
| Calibrated by: | Katja Pokovic | Technical Manager | |
| Approved by: | Niels Kuster | Quality Manager | |

Issued: November 11, 2008

This calibration certificate shall not be reproduced except in full without written approval of the laboratory.

DASY - Parameters of Probe: ET3DV6 SN:1766

Sensitivity in Free Space^A

Diode Compression^B

| | | | | |
|-------|---------------------|-------------------------------------|-------|--------------|
| NormX | 2.05 ± 10.1% | $\mu\text{V}/(\text{V}/\text{m})^2$ | DCP X | 90 mV |
| NormY | 1.72 ± 10.1% | $\mu\text{V}/(\text{V}/\text{m})^2$ | DCP Y | 91 mV |
| NormZ | 1.89 ± 10.1% | $\mu\text{V}/(\text{V}/\text{m})^2$ | DCP Z | 92 mV |

Sensitivity in Tissue Simulating Liquid (Conversion Factors)

Please see Page 8.

Boundary Effect

TSL **900 MHz** **Typical SAR gradient: 5 % per mm**

| | | | |
|---|------------------------------|---------------|---------------|
| Sensor Center to Phantom Surface Distance | | 3.7 mm | 4.7 mm |
| SAR _{be} [%] | Without Correction Algorithm | 9.6 | 5.6 |
| SAR _{be} [%] | With Correction Algorithm | 0.9 | 0.5 |

TSL **1810 MHz** **Typical SAR gradient: 10 % per mm**

| | | | |
|---|------------------------------|---------------|---------------|
| Sensor Center to Phantom Surface Distance | | 3.7 mm | 4.7 mm |
| SAR _{be} [%] | Without Correction Algorithm | 11.3 | 6.9 |
| SAR _{be} [%] | With Correction Algorithm | 0.8 | 0.5 |

Sensor Offset

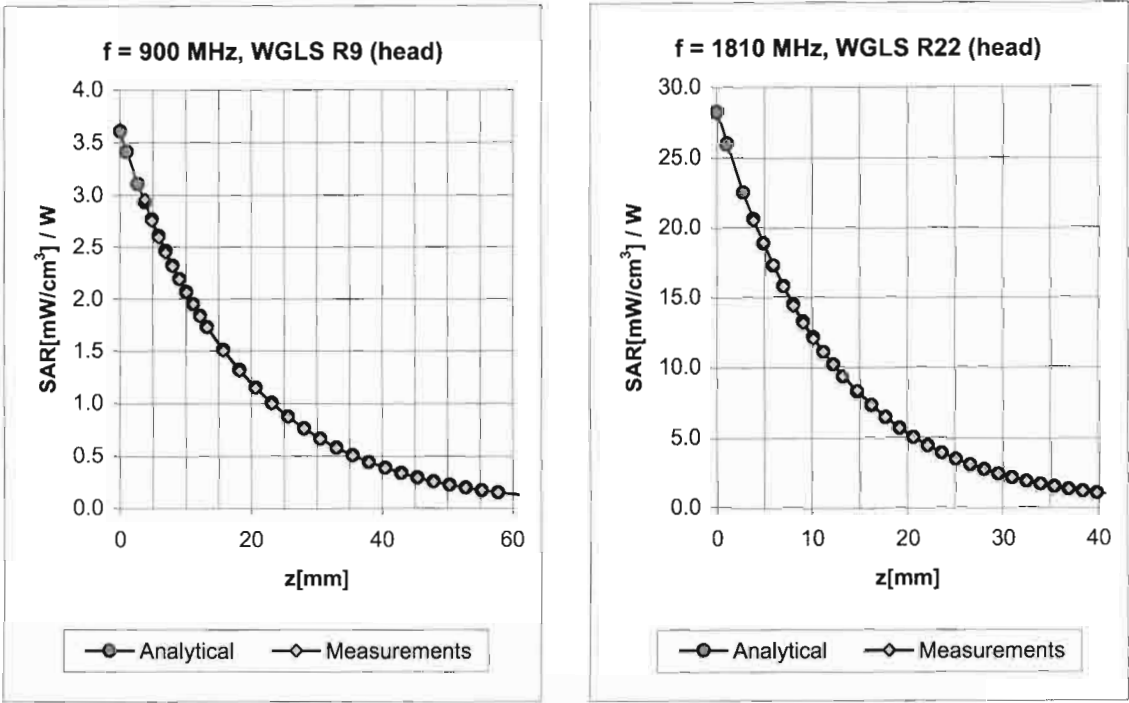
Probe Tip to Sensor Center **2.7 mm**

The reported uncertainty of measurement is stated as the standard uncertainty of measurement multiplied by the coverage factor k=2, which for a normal distribution corresponds to a coverage probability of approximately 95%.

^A The uncertainties of NormX,Y,Z do not affect the E²-field uncertainty inside TSL (see Page 8).

^B Numerical linearization parameter: uncertainty not required.

Conversion Factor Assessment



| f [MHz] | Validity [MHz] ^c | TSL | Permittivity | Conductivity | Alpha | Depth | ConvF Uncertainty |
|---------|-----------------------------|------|--------------|--------------|-------|-------|--------------------|
| 900 | ± 50 / ± 100 | Head | 41.5 ± 5% | 0.97 ± 5% | 0.23 | 3.50 | 5.82 ± 11.0% (k=2) |
| 1810 | ± 50 / ± 100 | Head | 40.0 ± 5% | 1.40 ± 5% | 0.99 | 1.79 | 4.95 ± 11.0% (k=2) |
| 1950 | ± 50 / ± 100 | Head | 40.0 ± 5% | 1.40 ± 5% | 0.99 | 1.65 | 4.72 ± 11.0% (k=2) |
| 900 | ± 50 / ± 100 | Body | 55.0 ± 5% | 1.05 ± 5% | 0.36 | 2.64 | 5.70 ± 11.0% (k=2) |
| 1810 | ± 50 / ± 100 | Body | 53.3 ± 5% | 1.52 ± 5% | 0.99 | 1.83 | 4.56 ± 11.0% (k=2) |
| 1950 | ± 50 / ± 100 | Body | 53.3 ± 5% | 1.52 ± 5% | 0.99 | 1.71 | 4.48 ± 11.0% (k=2) |

^c The validity of ± 100 MHz only applies for DASY v4.4 and higher (see Page 2). The uncertainty is the RSS of the ConvF uncertainty at calibration frequency and the uncertainty for the indicated frequency band.



Accredited by the Swiss Accreditation Service (SAS)
The Swiss Accreditation Service is one of the signatories to the EA
Multilateral Agreement for the recognition of calibration certificates

Accreditation No.: **SCS 108**

Client **Nokia Salo TCC**

Certificate No: **ES3-3165_May09**

CALIBRATION CERTIFICATE

Object **ES3DV3 - SN:3165**

Calibration procedure(s) **QA CAL-01.v6 and QA CAL-23.v3
Calibration procedure for dosimetric E-field probes**

Calibration date: **May 25, 2009**

Condition of the calibrated item **In Tolerance**

This calibration certificate documents the traceability to national standards, which realize the physical units of measurements (SI).
The measurements and the uncertainties with confidence probability are given on the following pages and are part of the certificate.

All calibrations have been conducted in the closed laboratory facility: environment temperature $(22 \pm 3)^{\circ}\text{C}$ and humidity $< 70\%$.

Calibration Equipment used (M&TE critical for calibration)

| Primary Standards | ID # | Cal Date (Certificate No.) | Scheduled Calibration |
|----------------------------|-----------------|-------------------------------|-----------------------|
| Power meter E4419B | GB41293874 | 1-Apr-09 (No. 217-01030) | Apr-10 |
| Power sensor E4412A | MY41495277 | 1-Apr-09 (No. 217-01030) | Apr-10 |
| Power sensor E4412A | MY41498087 | 1-Apr-09 (No. 217-01030) | Apr-10 |
| Reference 3 dB Attenuator | SN: S5054 (3c) | 31-Mar-09 (No. 217-01026) | Mar-10 |
| Reference 20 dB Attenuator | SN: S5086 (20b) | 31-Mar-09 (No. 217-01028) | Mar-10 |
| Reference 30 dB Attenuator | SN: S5129 (30b) | 31-Mar-09 (No. 217-01027) | Mar-10 |
| Reference Probe ES3DV2 | SN: 3013 | 2-Jan-09 (No. ES3-3013_Jan09) | Jan-10 |
| DAE4 | SN: 660 | 9-Sep-08 (No. DAE4-660_Sep08) | Sep-09 |

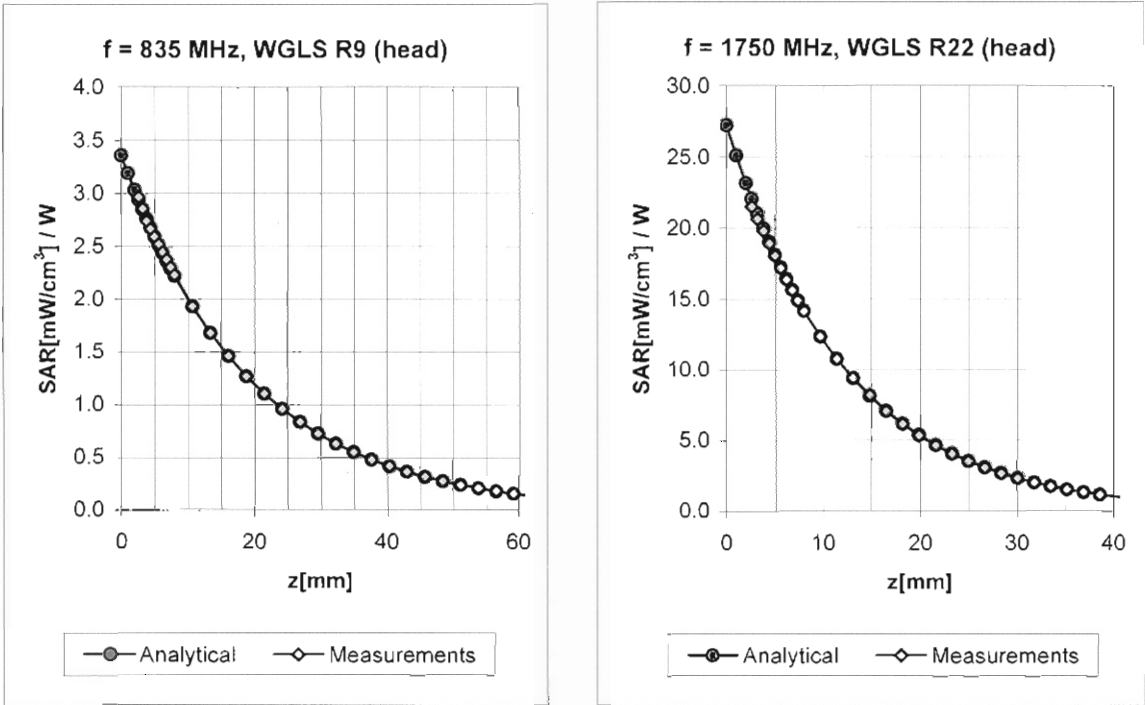
| Secondary Standards | ID # | Check Date (in house) | Scheduled Check |
|---------------------------|--------------|-----------------------------------|------------------------|
| RF generator HP 8648C | US3642U01700 | 4-Aug-99 (in house check Oct-07) | In house check: Oct-09 |
| Network Analyzer HP 8753E | US37390585 | 18-Oct-01 (in house check Oct-08) | In house check: Oct-09 |

| | Name | Function | Signature |
|----------------|----------------|-----------------------|-----------|
| Calibrated by: | Jeton Kastrati | Laboratory Technician | |
| Approved by: | Katja Pokovic | Technical Manager | |

Issued: May 25, 2009

This calibration certificate shall not be reproduced except in full without written approval of the laboratory.

Conversion Factor Assessment



| f [MHz] | Validity [MHz] ^c | TSL | Permittivity | Conductivity | Alpha | Depth | ConvF | Uncertainty |
|---------|-----------------------------|------|--------------|--------------|-------|-------|-------|---------------|
| 835 | ± 50 / ± 100 | Head | 41.5 ± 5% | 0.90 ± 5% | 0.45 | 1.64 | 5.98 | ± 11.0% (k=2) |
| 1750 | ± 50 / ± 100 | Head | 40.1 ± 5% | 1.37 ± 5% | 0.65 | 1.29 | 5.17 | ± 11.0% (k=2) |
| 1900 | ± 50 / ± 100 | Head | 40.0 ± 5% | 1.40 ± 5% | 0.60 | 1.48 | 5.00 | ± 11.0% (k=2) |
| 2450 | ± 50 / ± 100 | Head | 39.2 ± 5% | 1.80 ± 5% | 0.80 | 1.34 | 4.49 | ± 11.0% (k=2) |
| | | | | | | | | |
| 835 | ± 50 / ± 100 | Body | 55.2 ± 5% | 0.97 ± 5% | 0.40 | 1.64 | 5.95 | ± 11.0% (k=2) |
| 1750 | ± 50 / ± 100 | Body | 53.4 ± 5% | 1.49 ± 5% | 0.54 | 1.59 | 4.89 | ± 11.0% (k=2) |
| 1900 | ± 50 / ± 100 | Body | 53.3 ± 5% | 1.52 ± 5% | 0.39 | 2.01 | 4.60 | ± 11.0% (k=2) |
| 2450 | ± 50 / ± 100 | Body | 52.7 ± 5% | 1.95 ± 5% | 0.70 | 1.30 | 4.17 | ± 11.0% (k=2) |

^c The validity of ± 100 MHz only applies for DASY v4.4 and higher (see Page 2). The uncertainty is the RSS of the ConvF uncertainty at calibration frequency and the uncertainty for the indicated frequency band.

APPENDIX D: RELEVANT PAGES FROM DIPOLE VALIDATION KIT REPORT(S)

.



Accredited by the Swiss Accreditation Service (SAS)
 The Swiss Accreditation Service is one of the signatories to the EA
 Multilateral Agreement for the recognition of calibration certificates

Accreditation No.: **SCS 108**

Client **Nokia Salo TCC**

Certificate No: **D835V2-462 Jan08**

CALIBRATION CERTIFICATE

Object **D835V2 - SN: 462**

Calibration procedure(s) **QA CAL-05.v7
 Calibration procedure for dipole validation kits**

Calibration date: **January 21, 2008**

Condition of the calibrated item **In Tolerance**

This calibration certificate documents the traceability to national standards, which realize the physical units of measurements (SI).
 The measurements and the uncertainties with confidence probability are given on the following pages and are part of the certificate.

All calibrations have been conducted in the closed laboratory facility: environment temperature (22 ± 3)°C and humidity < 70%.

Calibration Equipment used (M&TE critical for calibration)

| Primary Standards | ID # | Cal Date (Calibrated by, Certificate No.) | Scheduled Calibration |
|-----------------------------|------------------|---|-----------------------|
| Power meter EPM-442A | GB37480704 | 04-Oct-07 (METAS, No. 217-00736) | Oct-08 |
| Power sensor HP 8481A | US37292783 | 04-Oct-07 (METAS, No. 217-00736) | Oct-08 |
| Reference 20 dB Attenuator | SN: 5086 (20g) | 07-Aug-07 (METAS, No 217-00718) | Aug-08 |
| Reference 10 dB Attenuator | SN: 5047.2 (10r) | 07-Aug-07 (METAS, No 217-00718) | Aug-08 |
| Reference Probe ET3DV6 (HF) | SN 1507 | 26-Oct-07 (SPEAG, No. ET3-1507_Oct07) | Oct-08 |
| DAE4 | SN 601 | 03-Jan-08 (SPEAG, No. DAE4-601_Jan08) | Jan-09 |

| Secondary Standards | ID # | Check Date (in house) | Scheduled Check |
|---------------------------|------------------|--|------------------------|
| Power sensor HP 8481A | MY41092317 | 18-Oct-02 (SPEAG, in house check Oct-07) | In house check: Oct-09 |
| RF generator R&S SMT-06 | 100005 | 04-Aug-99 (SPEAG, in house check Oct-07) | In house check: Oct-09 |
| Network Analyzer HP 8753E | US37390585 S4206 | 18-Oct-01 (SPEAG, in house check Oct-07) | In house check: Oct-08 |

| | Name | Function | Signature |
|----------------|---------------|-----------------------|-----------|
| Calibrated by: | Mike Menli | Laboratory Technician | |
| Approved by: | Katja Pokovic | Technical Manager | |

Issued: January 22, 2008

This calibration certificate shall not be reproduced except in full without written approval of the laboratory.

DASY4 Validation Report for Head TSL

Date/Time: 17.01.2008 15:39:50

Test Laboratory: SPEAG, Zurich, Switzerland

DUT: Dipole 835 MHz; Type: D835V2; Serial: D835V2 - SN:462

Communication System: CW; Frequency: 835 MHz; Duty Cycle: 1:1

Medium: HSL 900 MHz;

Medium parameters used: $f = 835 \text{ MHz}$; $\sigma = 0.92 \text{ mho/m}$; $\epsilon_r = 43$; $\rho = 1000 \text{ kg/m}^3$

Phantom section: Flat Section

Measurement Standard: DASY4 (High Precision Assessment)

DASY4 Configuration:

- Probe: ET3DV6 - SN1507 (HF); ConvF(6.01, 6.01, 6.01); Calibrated: 26.10.2007
- Sensor-Surface: 4mm (Mechanical Surface Detection)
- Electronics: DAE4 Sn601; Calibrated: 03.01.2008
- Phantom: Flat Phantom 4.9L; Type: QD000P49AA
- Measurement SW: DASY4, V4.7 Build 55; Postprocessing SW: SEMCAD, V1.8 Build 172

Pin = 250 mW; d = 15 mm/Zoom Scan (7x7x7)/Cube 0:

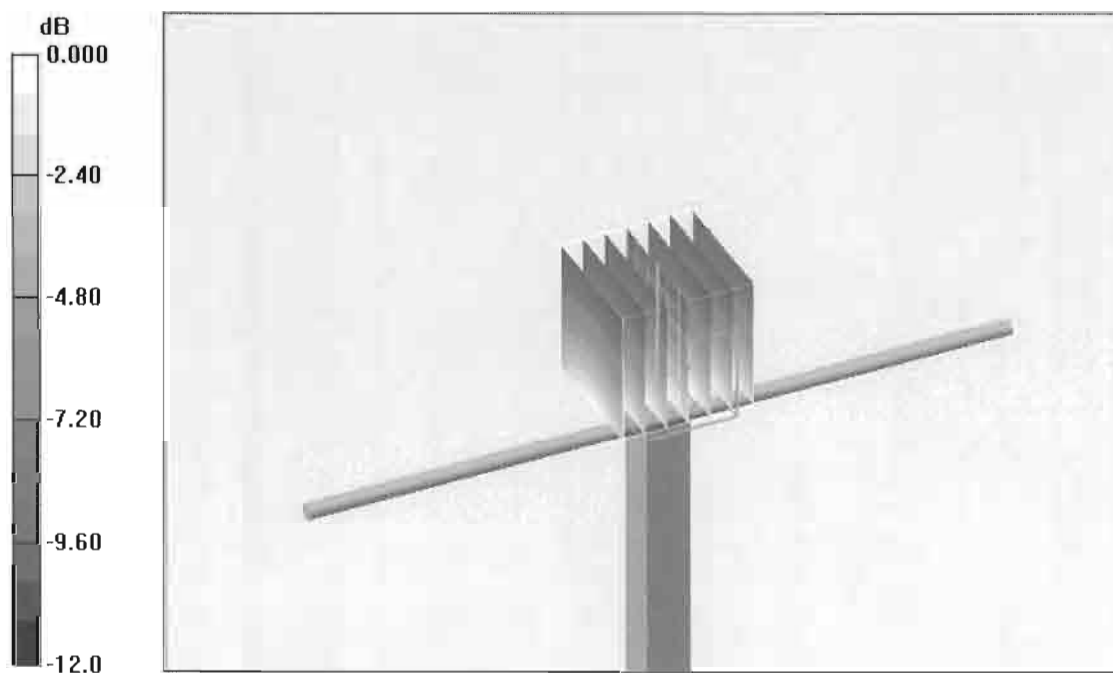
Measurement grid: $dx=5\text{mm}$, $dy=5\text{mm}$, $dz=5\text{mm}$

Reference Value = 55.2 V/m; Power Drift = 0.036 dB

Peak SAR (extrapolated) = 3.53 W/kg

SAR(1 g) = 2.42 mW/g; SAR(10 g) = 1.58 mW/g

Maximum value of SAR (measured) = 2.63 mW/g



0 dB = 2.63mW/g

DASY4 Validation Report for Body TSL

Date/Time: 21.01.2008 12:34:02

Test Laboratory: SPEAG, Zurich, Switzerland

DUT: Dipole 835 MHz; Type: D835V2; Serial: D835V2 - SN:462

Communication System: CW; Frequency: 835 MHz; Duty Cycle: 1:1

Medium: MSL900;

Medium parameters used: $f = 835 \text{ MHz}$; $\sigma = 0.99 \text{ mho/m}$; $\epsilon_r = 54.2$; $\rho = 1000 \text{ kg/m}^3$

Phantom section: Flat Section

Measurement Standard: DASY4 (High Precision Assessment)

DASY4 Configuration:

- Probe: ET3DV6 - SN1507 (HF); ConvF(5.83, 5.83, 5.83); Calibrated: 26.10.2007
- Sensor-Surface: 4mm (Mechanical Surface Detection)
- Electronics: DAE4 Sn601; Calibrated: 03.01.2008
- Phantom: Flat Phantom 4.9L; Type: QD000P49AA
- Measurement SW: DASY4, V4.7 Build 55; Postprocessing SW: SEMCAD, V1.8 Build 172

Pin = 250mW, d = 15mm/Zoom Scan (7x7x7)/Cube 0:

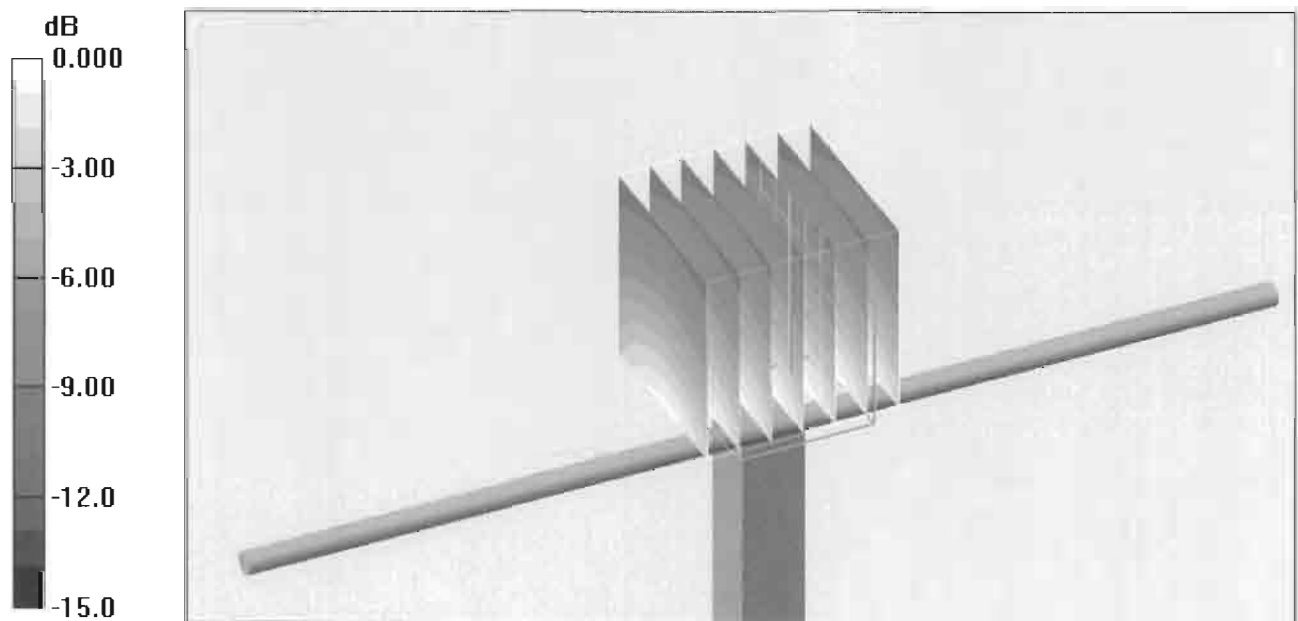
Measurement grid: $dx=5\text{mm}$, $dy=5\text{mm}$, $dz=5\text{mm}$

Reference Value = 53.4 V/m; Power Drift = -0.002 dB

Peak SAR (extrapolated) = 3.46 W/kg

SAR(1 g) = 2.41 mW/g; SAR(10 g) = 1.58 mW/g

Maximum value of SAR (measured) = 2.60 mW/g



0 dB = 2.60mW/g



Accredited by the Swiss Accreditation Service (SAS)
 The Swiss Accreditation Service is one of the signatories to the EA
 Multilateral Agreement for the recognition of calibration certificates

Accreditation No.: **SCS 108**

Client **Nokia Salo TCC**

Certificate No: **D1900V2-5d030_Jan08**

CALIBRATION CERTIFICATE

Object **D1900V2 - SN: 5d030**

Calibration procedure(s) **QA CAL-05.v7**
Calibration procedure for dipole validation kits

Calibration date: **January 29, 2008**

Condition of the calibrated item **In Tolerance**

This calibration certificate documents the traceability to national standards, which realize the physical units of measurements (SI).
 The measurements and the uncertainties with confidence probability are given on the following pages and are part of the certificate.

All calibrations have been conducted in the closed laboratory facility: environment temperature $(22 \pm 3)^{\circ}\text{C}$ and humidity $< 70\%$.

Calibration Equipment used (M&TE critical for calibration)

| Primary Standards | ID # | Cal Date (Calibrated by, Certificate No.) | Scheduled Calibration |
|-----------------------------|------------------|---|------------------------|
| Power meter EPM-442A | GB37480704 | 04-Oct-07 (METAS, No. 217-00736) | Oct-08 |
| Power sensor HP 8481A | US37292783 | 04-Oct-07 (METAS, No. 217-00736) | Oct-08 |
| Reference 20 dB Attenuator | SN: 5086 (20g) | 07-Aug-07 (METAS, No 217-00718) | Aug-08 |
| Reference 10 dB Attenuator | SN: 5047.2 (10r) | 07-Aug-07 (METAS, No 217-00718) | Aug-08 |
| Reference Probe ET3DV6 (HF) | SN: 1507 | 26-Oct-07 (SPEAG, No. ET3-1507_Oct07) | Oct-08 |
| DAE4 | SN 601 | 3-Jan-08 (SPEAG, No. DAE4-601_Jan08) | Jan-09 |
| Secondary Standards | ID # | Check Date (in house) | Scheduled Check |
| Power sensor HP 8481A | MY41092317 | 18-Oct-02 (SPEAG, in house check Oct-07) | In house check: Oct-08 |
| RF generator R&S SMT-06 | 100005 | 4-Aug-99 (SPEAG, in house check Oct-07) | In house check: Oct-09 |
| Network Analyzer HP 8753E | US37390585 S4206 | 18-Oct-01 (SPEAG, in house check Oct-07) | In house check: Oct-08 |

Calibrated by: **Mike Meili** **Laboratory Technician**

Approved by: **Katja Pokovic** **Technical Manager**

Issued: January 30, 2008

This calibration certificate shall not be reproduced except in full without written approval of the laboratory.

DASY4 Validation Report for Head TSL

Date/Time: 29.01.2008 14:30:03

Test Laboratory: SPEAG, Zurich, Switzerland

DUT: Dipole 1900 MHz; Type: D1900V2; Serial: D1900V2 - SN:5d030

Communication System: CW; Frequency: 1900 MHz; Duty Cycle: 1:1

Medium: HSL U10 BB;

Medium parameters used: $f = 1900$ MHz; $\sigma = 1.46$ mho/m; $\epsilon_r = 38.5$; $\rho = 1000$ kg/m³

Phantom section: Flat Section

Measurement Standard: DASY4 (High Precision Assessment)

DASY4 Configuration:

- Probe: ET3DV6 - SN1507 (HF); ConvF(4.86, 4.86, 4.86); Calibrated: 26.10.2007
- Sensor-Surface: 4mm (Mechanical Surface Detection)
- Electronics: DAE4 Sn601; Calibrated: 03.01.2008
- Phantom: Flat Phantom 5.0 (front); Type: QD000P50AA
- Measurement SW: DASY4, V4.7 Build 55; Postprocessing SW: SEMCAD, V1.8 Build 172

Pin = 250 mW; d = 10 mm/Zoom Scan (7x7x7)/Cube 0:

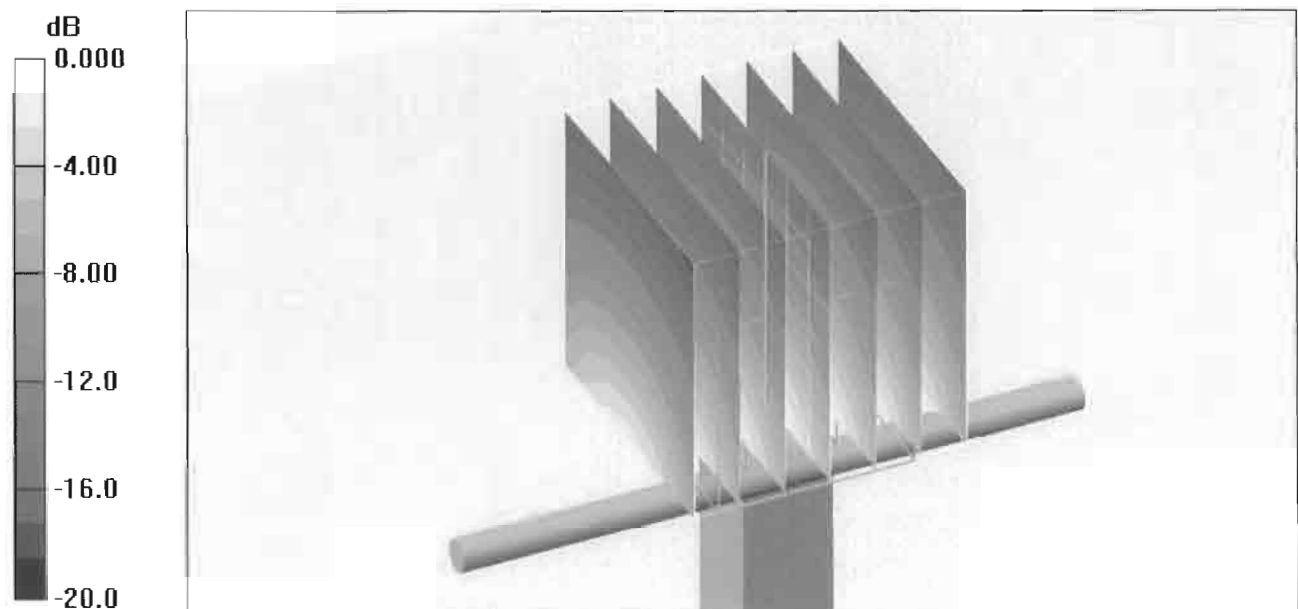
Measurement grid: dx=5mm, dy=5mm, dz=5mm

Reference Value = 93.8 V/m; Power Drift = 0.031 dB

Peak SAR (extrapolated) = 18.0 W/kg

SAR(1 g) = 10.2 mW/g; SAR(10 g) = 5.3 mW/g

Maximum value of SAR (measured) = 11.5 mW/g



0 dB = 11.5mW/g

DASY4 Validation Report for Body TSL

Date/Time: 22.01.2008 14:15:36

Test Laboratory: SPEAG, Zurich, Switzerland

DUT: Dipole 1900 MHz; Type: D1900V2; Serial: D1900V2 - SN:5d030

Communication System: CW; Frequency: 1900 MHz; Duty Cycle: 1:1

Medium: MSL U10 BB;

Medium parameters used: $f = 1900$ MHz; $\sigma = 1.54$ mho/m; $\epsilon_r = 53.1$; $\rho = 1000$ kg/m³

Phantom section: Flat Section

Measurement Standard: DASY4 (High Precision Assessment)

DASY4 Configuration:

- Probe: ET3DV6 - SN1507 (HF); ConvF(4.48, 4.48, 4.48); Calibrated: 26.10.2007
- Sensor-Surface: 4mm (Mechanical Surface Detection)
- Electronics: DAE4 Sn601; Calibrated: 03.01.2008
- Phantom: Flat Phantom 5.0 (back); Type: QD000P50AA
- Measurement SW: DASY4, V4.7 Build 55; Postprocessing SW: SEMCAD, V1.8 Build 172

Pin = 250 mW; d = 10 mm/Zoom Scan (7x7x7)/Cube 0:

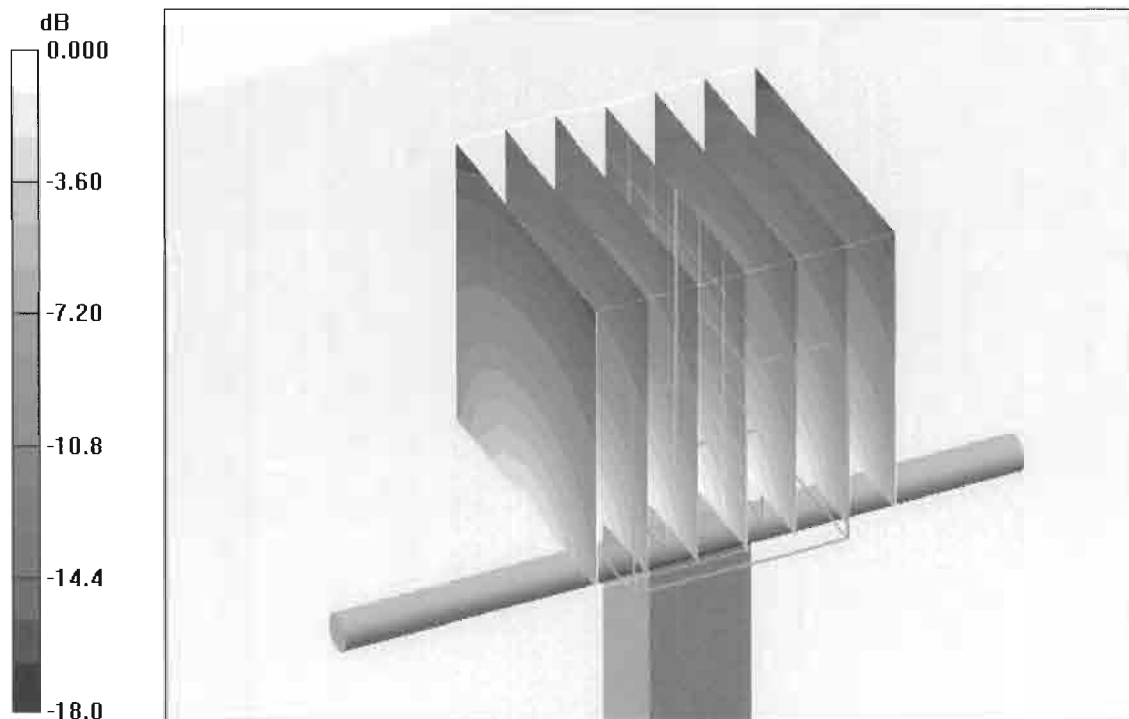
Measurement grid: dx=5mm, dy=5mm, dz=5mm

Reference Value = 90.4 V/m; Power Drift = -0.023 dB

Peak SAR (extrapolated) = 16.6 W/kg

SAR(1 g) = 9.62 mW/g; SAR(10 g) = 5.1 mW/g

Maximum value of SAR (measured) = 10.9 mW/g



0 dB = 10.9mW/g