

USER MANUAL

FOR

MP3 PLAYER SERIES

(MP-868WW)

Manufacturer : Andah Electronics (Shenzhen) Ltd
Tong Fuyu Industrial Park, Chongqing Road,
Fuyong Town, Shenzhen (518103),
Guangdong, China

Tel. : (86) 755 27329988

Fax. : (86) 755 27329168

User Manual

Federal Communications Commission (FCC) Statement.....	3
Preface	4
Safety Information.....	4
Package Contents.....	4
Functional Modes and Features	5
Description of the control	5
Basic Functions.....	7
1. Powering On/Off your MP-868WW	7
2. Charging your MP-868WW	7
3. Connect to Computer and Data File Transmission	7
4. Microphone	7
5. Setting Up the Wi-Fi.....	7
System Menu	9
1. Main Menu Setup.....	9
2. Internal radio.....	9
3. Media stream	10
4. Music player.....	13
5. FM radio.....	14
6. System.....	15

NOTE: The manufacturer is not responsible for any radio or TV interference caused by unauthorized modifications to this equipment. Such modifications could void the user's authority to operate the equipment.

Federal Communications Commission (FCC) Statement

NOTE: This equipment has been tested and found to comply with the limits for a Class B digital device, pursuant to part 15 of the FCC Rules. These limits are designed to provide reasonable protection against harmful Interference in a residential installation.

This equipment generates uses and can radiate radio frequency energy and, if not installed and used in accordance with the instructions, may cause harmful interference to radio communications. However, there is no guarantee that interference will not occur in a particular installation. If this equipment does cause harmful interference to radio or television reception, which can be determined by turning the equipment off and on, the user is encouraged to try to correct the interference by one or more of the following measures:

- Reorient or relocate the receiving antenna.
- Increase the separation between the equipment and receiver.
- Connect the equipment into an outlet on a circuit different from that to which the receiver is connected.
- Consult the dealer or an experienced radio/TV technician for help.

Preface

Congratulations on your purchase the **MP-868WW**. Before operating the unit, please read this manual thoroughly and keep it for future reference. This manual will help you learn to use many of the exciting features of this device and make you experience more enjoyable.

This manual contains important safety measurements and operational information, so please read all the information carefully before you use the device in order to avoid any unexpected accidents.

Safety Information

Read the safety instructions carefully before using your MP-868WW.

- Do not use Headphone/Earphones while driving, cycling or operating any motorized vehicle. This may create traffic hazard and may be illegal in some areas. It can also be dangerous to play your Headphones/Earphones at high volume while walking or engaged in other activities. You should exercise extreme cautions and discontinue use the potentially hazardous situations.
- Avoid using Headphones/Earphones at high volume. Hearing expert's advice against continuous loud and extended music play. Keep the volume at a moderate level, so that you are able to hear outside sound, and to be considerate of the people around you.
- Keep your player away from sinks, drinks, bathtub, showers, rain and other sources of moisture. Moisture can cause electric shocks with any electronic device.
- Follow these tips to keep your player working well for a long time:
Clean your player with a soft lint free cloth used on glass lenses.
Do not allow young children to use your player or your computer. Make sure your connectors are the identical shape and size before you connect.
Do not disassemble, crush, short-circuit or incinerate your battery as it may cause fire, injury, burns or other hazards.
- When transferring files, do not turn the power off or restart this device. No responsibility is provided for any damage to or loss of any program, data, or other information stored on any media or any part of this device serviced hereunder.
- Please recharge the device when:
A. Battery electricity icon displays no electricity.
B. Player refuses to power on.
C. Player functions normally, but it quickly powers off automatically.
D. There is no response when pressing the keys.

Package Contents



Your **MP-868WW** package includes:

- **MP-868WW** Player x1
- Earphone x1
- USB Cable x1
- User Manual x1

Functional Modes and Features

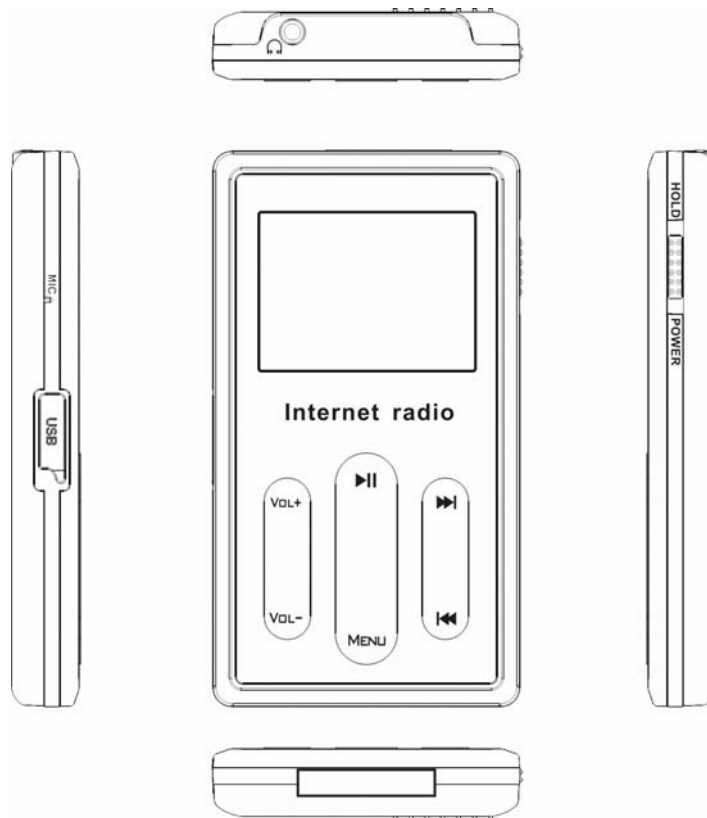
The **MP-868WW** is a small, lightweight and stylish Portable Internet Player. Incorporating a Internet radio and Media stream over a Wi-Fi network is the smallest; most feature-packed Portable Internet media player. Other features include a Music Player and a FM radio. Powered by a lightweight, rechargeable battery, the **MP-868WW** provides hours of audio and video on the move.

A brief description of the features is listed below:

 Internet radio	Internet Radio gets you connected to various radio stations around the world through the Wi-Fi
 Media stream	Media Stream play music streams from your Windows media player version11 application in your PC or Notebook running Windows XP or Vista OS over the Wi-Fi connection.
 Music player	Music Player , is a MP3 player and plays back the music files stored in MP-868WW
 FM radio	FM Radio , connects to the local FM Radio Stations
 System	System , used for performing all the settings in your MP-868WW

Description of the control

The user can operate your device by keys. There are seven keys. Every key has its special function. The function does not change with various modules. A brief description of the features is listed below:



- | | | |
|----|------------------------|---|
| 1 | Power On/Off | Turn MP-868WW ON or OFF |
| 2 | MENU | Press to go up one list screen level or to return to previous menu. |
| 3 | VOL- | Adjust the Volume to lower level |
| 4 | VOL+ | Adjust the volume to a higher level |
| 5 | ⏮ | To scroll the menu in backward direction |
| 6 | ⏸ | To select an item. |
| 7 | ⏭ | To scroll the menu in Forward direction |
| 8 | Reset | Resets the player when you press the reset button with a small pin. |
| 9 | Earphone Jack | For connecting the Earphones. Insert the Jack pin until it clicks it the place. You cannot listen to the music if it is not connected properly. |
| 9 | USB/Power terminal | To connect the USB terminal to transfer music and video files or to connect the power adopter for charging. |
| 11 | Micro-SD/MMC card slot | To slot in the Micro-SD/MMC card to transfer data to the player. |

Basic Functions

1. Powering On/Off your MP-868WW

Power on: To power on your **MP-868WW**, push and hold Power key.

After the startup is complete, you will see a welcome screen and then show you the Internet Radio mode.

Power off: Push and hold the power button to turn off the device.

2. Charging your MP-868WW

1. Connect the USB cable to your **MP-868WW** device, then connect the other end of USB cable to the USB port on your PC.
2. The battery icon will display the impulse, after the charging, the battery electricity will shows full grids.
3. It takes about 4 hours to fully charging the battery. **Do not overcharge (longer than 10 hours)**. Excessive charging or discharging may shorten the battery's life.

Note:

Fully charge (at least 8 hours) the rechargeable battery before using the player for the first time or when it has not been used for a while.

3. Connect to Computer and Data File Transmission

1. Connect the USB cable to your **MP-868WW** player, then connect the other end of USB cable to the USB port on your PC.
2. Select and organize files and folders in preparation for transfer to your **MP-868WW** device.

4. Microphone

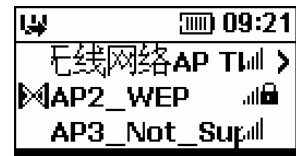
Press and hold **▶||** button in any status, the screen will display "Microphone" option, then press **▶||** button again to confirm and start to recording, press **▶||** button can switch the recording pause or play, press **MENU** button to stop recording.

5. Setting Up the Wi-Fi

Your **MP-868WW** can be easily connected to the Wi-Fi networks. When a Wi-Fi connection is required (for instance, to play Internet Radio or Media stream) the **MP-868WW** will automatically look for a network and try to connect.

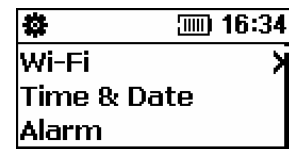
When starting the Wi-Fi connection, your

MP-868WW will find all the Wi-Fi networks SSID in the range. Network SSID will be listed in order of the signal strength (with highest first) and protected networks, which requires a password is indicated by a lock icon. as seen



When you are connecting the **MP-868WW** for the first time, you will have to setup the Wi-Fi network. To do this please follow the steps below:

- From the main menu select the **system** mode using the using ► and ◀ buttons to navigate.



- Next select the Wi-Fi from the menu

- Go to the 'Wi-Fi setup Wizard' as shown

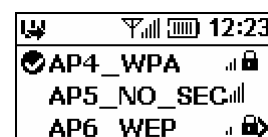


- Make sure the Wi-Fi ON is selected, search the network; you will get the list of nearby Wi-Fi networks. Once the network is selected it prompts for the Default Network key which is the WEP/WPA default transmit key of the Wi-Fi Access point



- Use ▼▲►◄ and ◀ buttons and the delete ◀ button to type in the network key, and then press the MENU button to exit from the keypad.
- Next press ► to confirm.

- It will now tick an arrow to the network you have selected. Press the ► button and save the profile.



- Once you select to save the profile, it will prompt where to save as shown. You can choose to save in the relevant folder.



Now your Wi-Fi is setup.

Note:

For the details of the Access Point please refer to Access point's manufacturer manual.

System Menu

1. Main Menu Setup

1. Press the **MENU** key to enter the main menu under standby or playing mode.
2. Press the **▶▶** or **◀◀** key to select: Internet radio, Media stream, Music player, FM radio & System.
3. Press the **▶||** key to enter into the following setting:

2. Internal radio

Internet radio gives you the access to all the Radio stations available worldwide. Once your **MP-868WW** is connected to the Wi-Fi, you can listen to either all the pre-set channels or to **My Radio**, which has all your favorite Radio channels.

Listening to the Internet Radio

To listen to the Internet Radio, select **Internet Radio**, from the **Main Menu**. Upon selecting the Internet Radio, the radio gets connected to the previously connected channel automatically. Press the **MENU** button and hold for 2-3 seconds to get the menu screen of the Internet Radio as seen below:



My Radio consists of all your favorite radio stations.

Radio Search is an advance search which is organized into different categories. Please read on for details.

Add to my Radio, will save that particular station in you're **My Radio**

To Main Menu, takes you back to main menu





Radio Search

The Radio Search is organized to search the stations in the following groups:

Location is a search based on the different geographical locations of the world.

Genre includes stations organized by the type of music played (e.g. Band, Country, Classic, Rock)

New Stations Contains list of new Radio Stations.

Most Popular stations include stations based on the popularity.



My Radio

You can customize the radio stations in you're My Radio. To view the Popup menu you have to press and hold the menu button for 2-3 seconds. The details of the popup menu are explained below:

My Radio consists of all your favorite radio stations.

Radio Search is an advance search which is organized into different categories. Please read on for details.

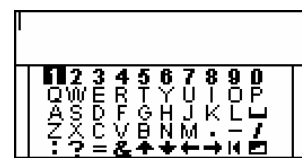
Custom Radio, you can customize your Radio stations, see below for more details.

Remove, will delete the station selected

Remove all, will delete the complete contents of the folder



Custom Radio, you can customize the Internal Radio URL by typing the URL addresses.



3. Media stream

Now that your Wi-Fi is setup, you can access any songs from your Windows Media Player Version 11 in Windows XP or Vista OS.

Listening to Media Stream

Select the **Media Stream** from the Main Menu. It will first access the Wi-Fi and scans the server. It will prompt you the menu screen as shown, select the server that you want to access to by using ►► or ◀◀ button and confirm by pressing ►► button.



Depend on the Media Server you are accessing it may be organized into a few folders and you can select the Music or Playlists to hear your favorite music. Select the folder using ►► or ◀◀ button and confirm by pressing ►► button. Below may be the folder you may see

Music, has the list of the Music

Video, contains the list of videos, not supported via streaming

Pictures, Includes all the pictures, not supported via streaming

Playlists, consists a list of playlists

Note:

Make sure that you have your PC or Notebook turned-on and it is running the Windows Media Player (Version 11) in Windows XP or the Vista OS. You should also share the Music streaming of the entire new device in your PC or Notebook Media Player. [See Setting up PC Media Player 11]

Streaming the Music

Once you select the Music folder under that particular server, you can stream and listen to all the music from your PC's Media Player over the Wi-Fi.



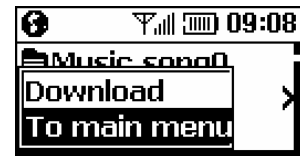
Select the Music Folder or Song that you wish to listen to



Under song list mode, you can access the pop-up menu at any time by pressing the menu button holding it for 2-3 seconds. The menu contains:

Download, helps you to transfer a selected music file to the **Music Player**.

To Main menu, takes you to the main menu

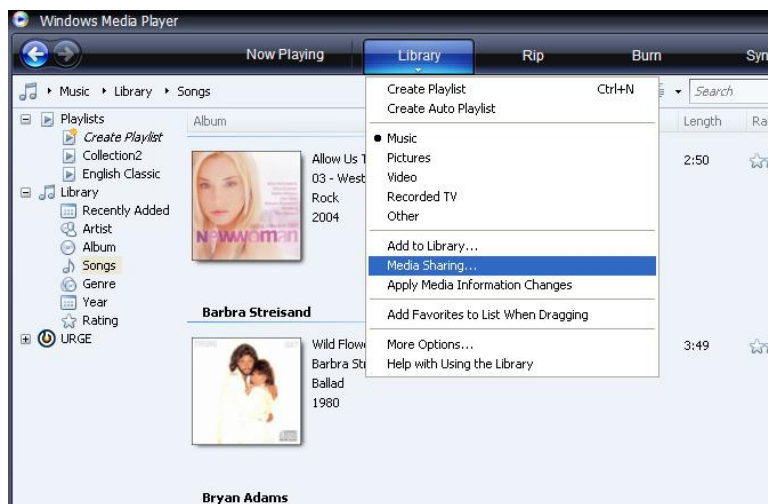


Now you can stream your favorite music from your PC, acting as your Juke Box for the **MP-868WW**.

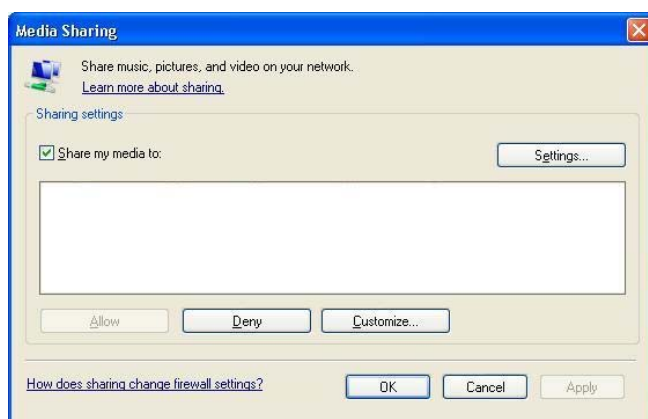
Note:

Setting up Windows Media Player version 11

You should be running Windows XP OS on your PC/Laptop, and Windows Media Player version 11. Now open the Windows Media Player, and choose **Library**. From the drop down list of the menu select the **Media sharing**.

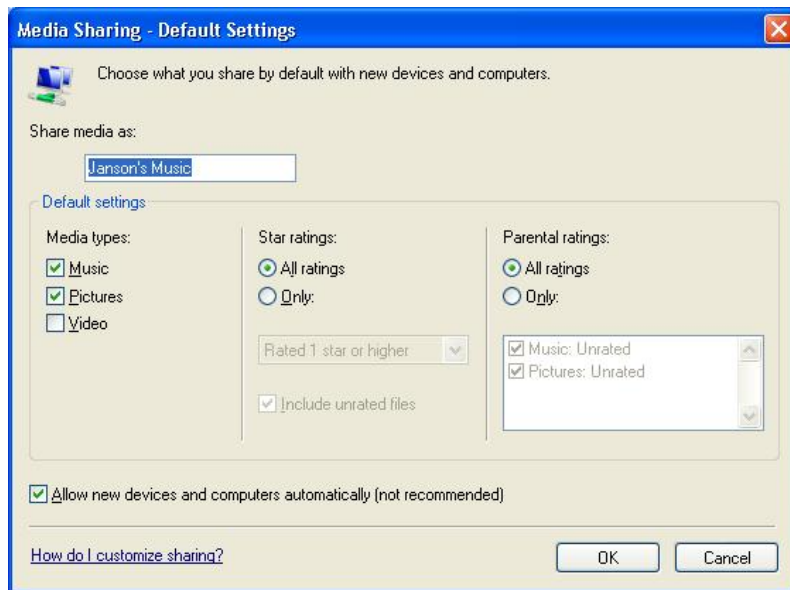


Now tick the 'Share my media to' and select settings

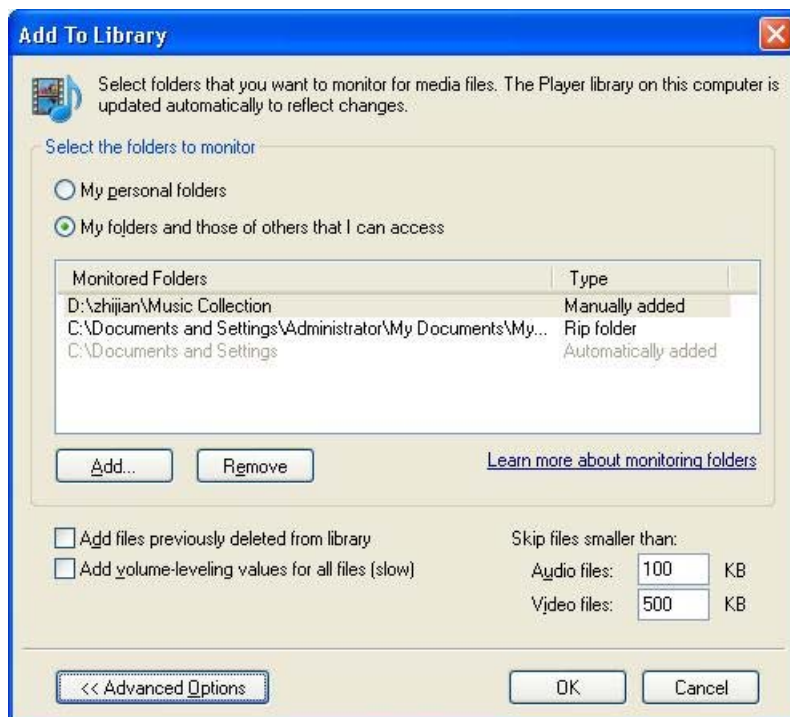


Please un-tick Pictures and video under Media type.

Next tick the 'Allow new devices and computers automatically' and press OK



To select the folders for monitor and for sharing, choose **Library**.
 From the drop down list of the menu select the **Add to Library**.
 Select the folders to monitor as below



After selected the folders to monitor and share in the Player Library, click OK

4. Music player

Music Player is a MP3 player that plays back the music files stored in **MP-868WW** internal storage or download from the Media stream.

Listen to the Music Player

Select the Music Player from the main menu. Once you are in the Music Player mode you will be connected to the last played song. To view the pop-up menu press and hold the **MENU** button for 2-3 seconds.

The pop-up menu contains:



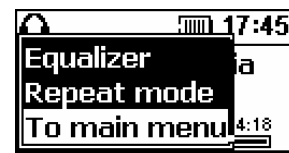
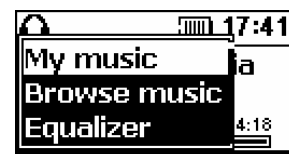
My Music – contains the list of your favorite music

Browse Music – lets you browse through the songs according to the pre-set category

Equalizer – choose from the list of preset equalizer modes

Repeat Mode – Helps you play the selected songs repeatedly

To main menu – Takes you back to the main menu.



5. FM radio

FM Radio connects you to the local radio channels available in your city. To listen to the FM Radio, select the **FM Radio**, from the main menu and it will start playing the last played channel. To change the channels use **□□** and **□□** buttons. Press and hold the menu button for 2-3 seconds to get the pop-up menu. The pop-up menu includes:

Auto scan, Scans the FM band and stores the Stations automatically

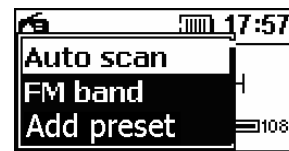
FM Band, includes support for FM Bands of USA and Japan

Recording, you can record the music from the channel you are listening.

Add Preset, you can store the channel manually.

Fine tuning, allows you to do fine tuning on a channel.

Turn off FM, Let you to turn off the FM



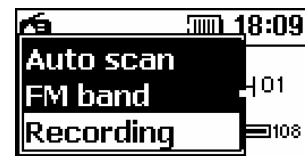
Scan the FM Channels

To **Auto Scan** the channels, press and hold the **menu** button for 2-3 seconds to get the pop-up menu. Select the Auto scan option and it will scan the channels automatically for you. To browse the scanned channels press the **▶||** button



Record

To Record the music you are listening on the radio, go to the popup menu and select the Record Option. This will start to record the selected music and stores as a WAV file format.



6. System

System lets customize the settings of your **MP-868WW**. Select the **System** from the main menu and you will see the settings menu. It includes the following categories:

Wi-Fi, helps you set up the Wi-Fi, for more details please refer 'Setting up the Wi-Fi' on page.



Time & Date, to set the Time and Date



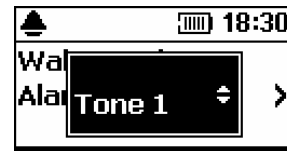
Alarm, to set the Wake up alarm and select the tone

Wake Up Alarm, to set the Wake up alarm time



Alarm tone, to set the Wake up alarm tone

Display, to do the display settings like:



Auto LCD Off, setting Auto LCD off time

Contrast, LCD Contrast setting

Language, setting of Language



File Manager, has the file management and allow you to play and delete them directly from here



Default, sets to the default factory settings



About, details of the player Model name, Internal storage and device MAC address

