

Annex 1: Internal EUT Photographs
to
TEST REPORT
No.: 2-20810461-13-1ab







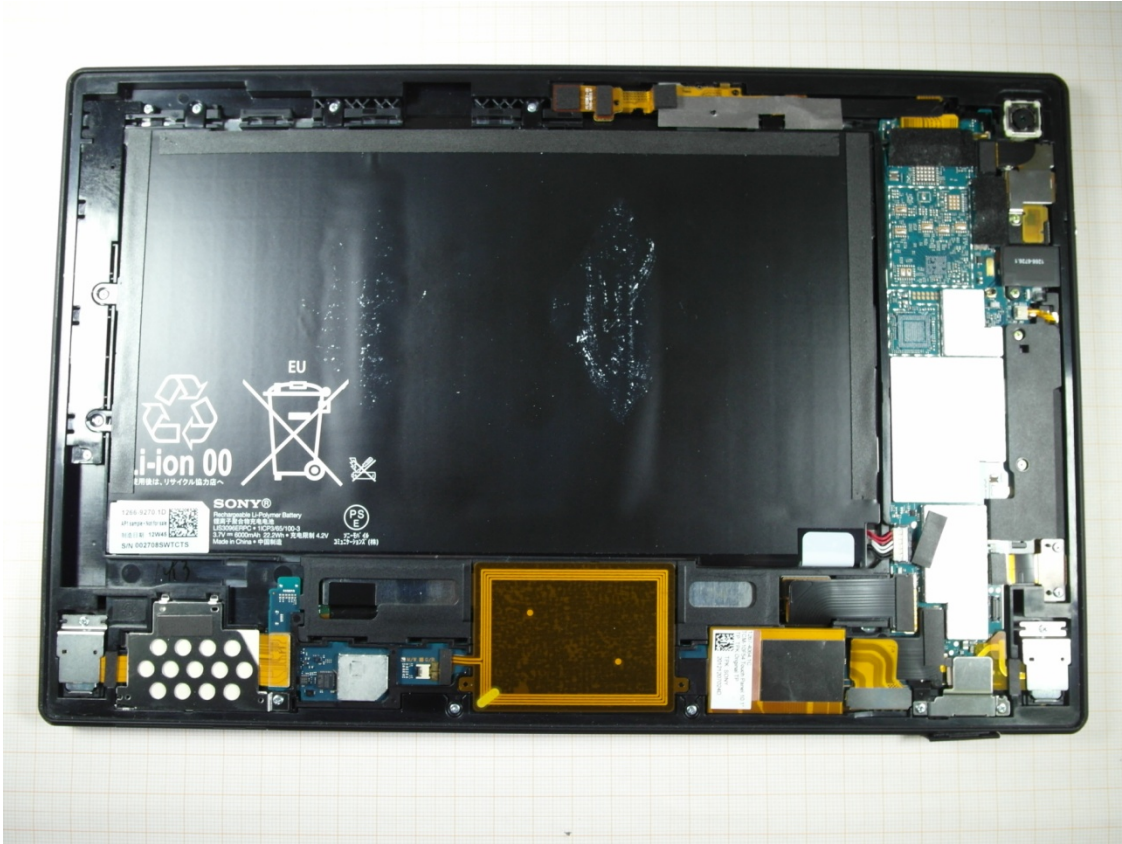
Laboratory Accreditation and Listings			
 D-PL-12047-01-01	 Reg. No.: 736496 MRA US-EU 0003	 Industry Canada Reg. No.: 3462D-1 3462D-2 3462D-3	 Reg. No.: R-2665, R-2666 C-2914, T-1967 G-301
 LAB CODE 20011130-00			
accredited according to DIN EN ISO/IEC 17025			
<p>CETECOM GmbH Laboratory Radio Communications & Electromagnetic Compatibility Im Teelbruch 116 • 45219 Essen • Germany Registered in Essen, Germany, Reg. No.: HRB Essen 8984 Tel.: + 49 (0) 20 54 / 95 19-954 • Fax: + 49 (0) 20 54 / 95 19-964 E-mail: info@cetecom.com • Internet: www.cetecom.com</p>			

Table of contents

1. PHOTOS OF THE INTERNAL EUT'S	3
---------------------------------------	---

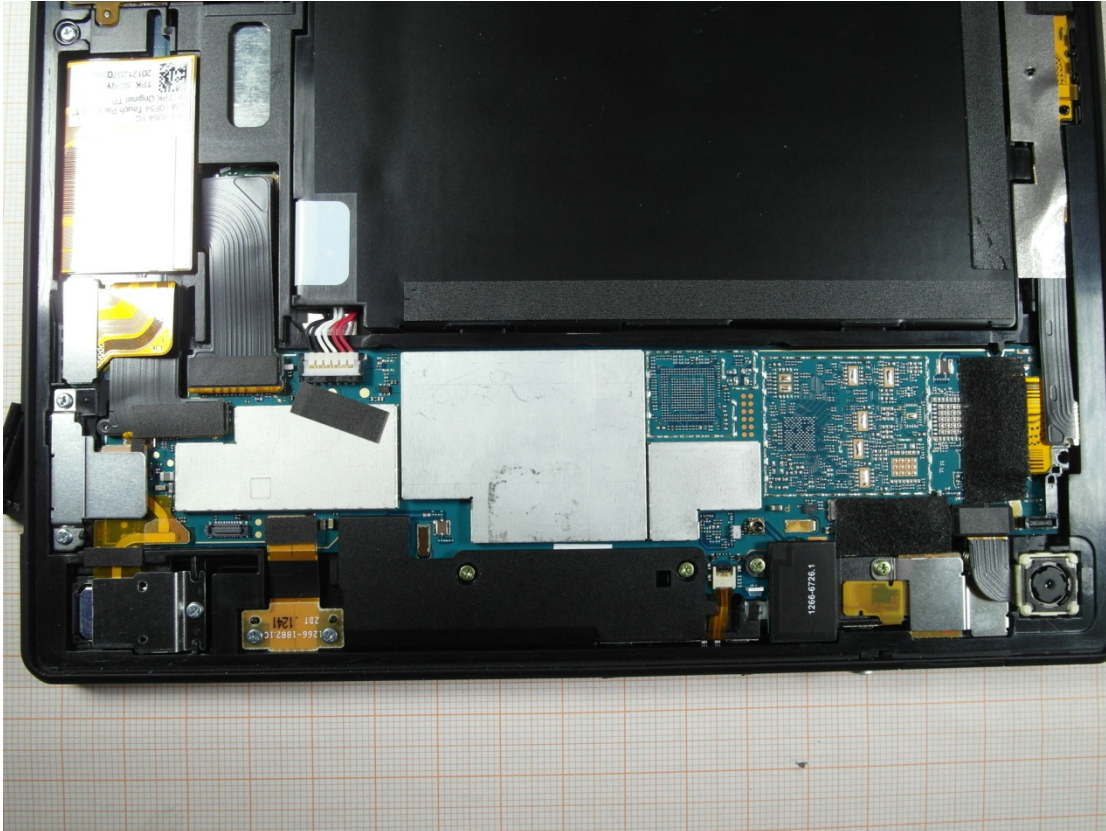
1. Photos of the internal EUT's



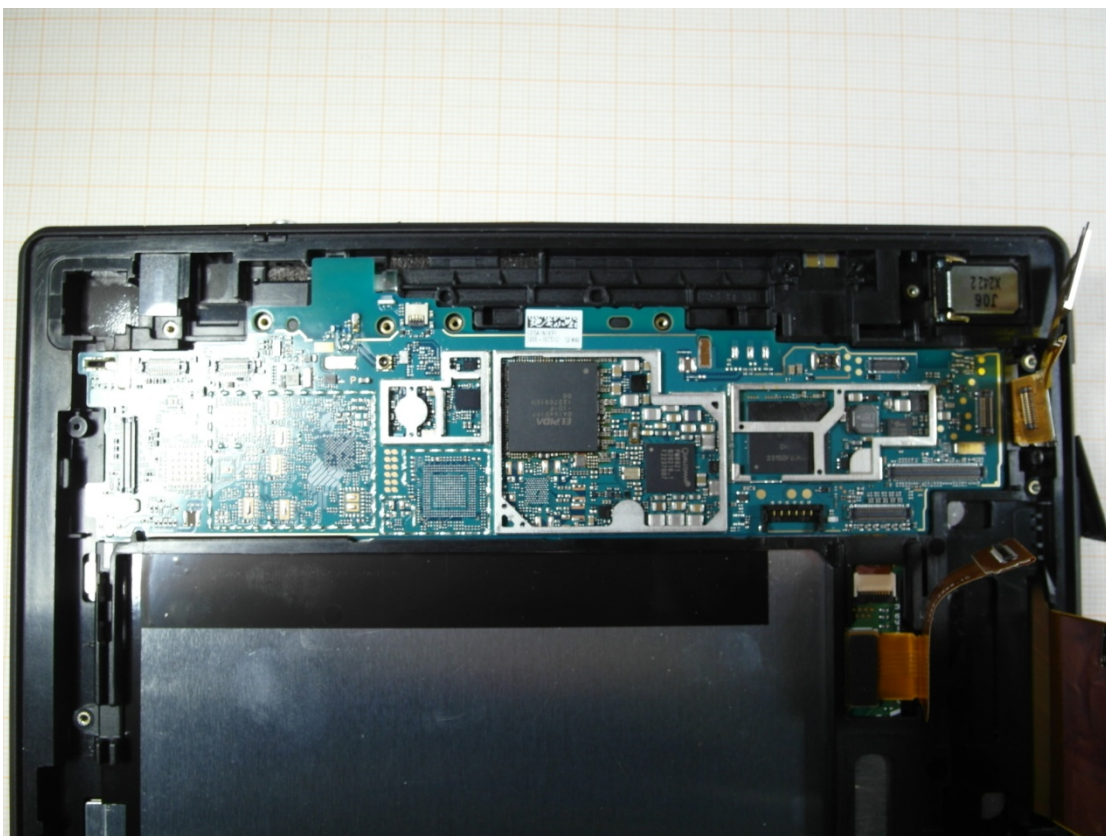
EUT inside view (WLAN-module plug on the right corner below camera, PBA)



EUT inside - ID label



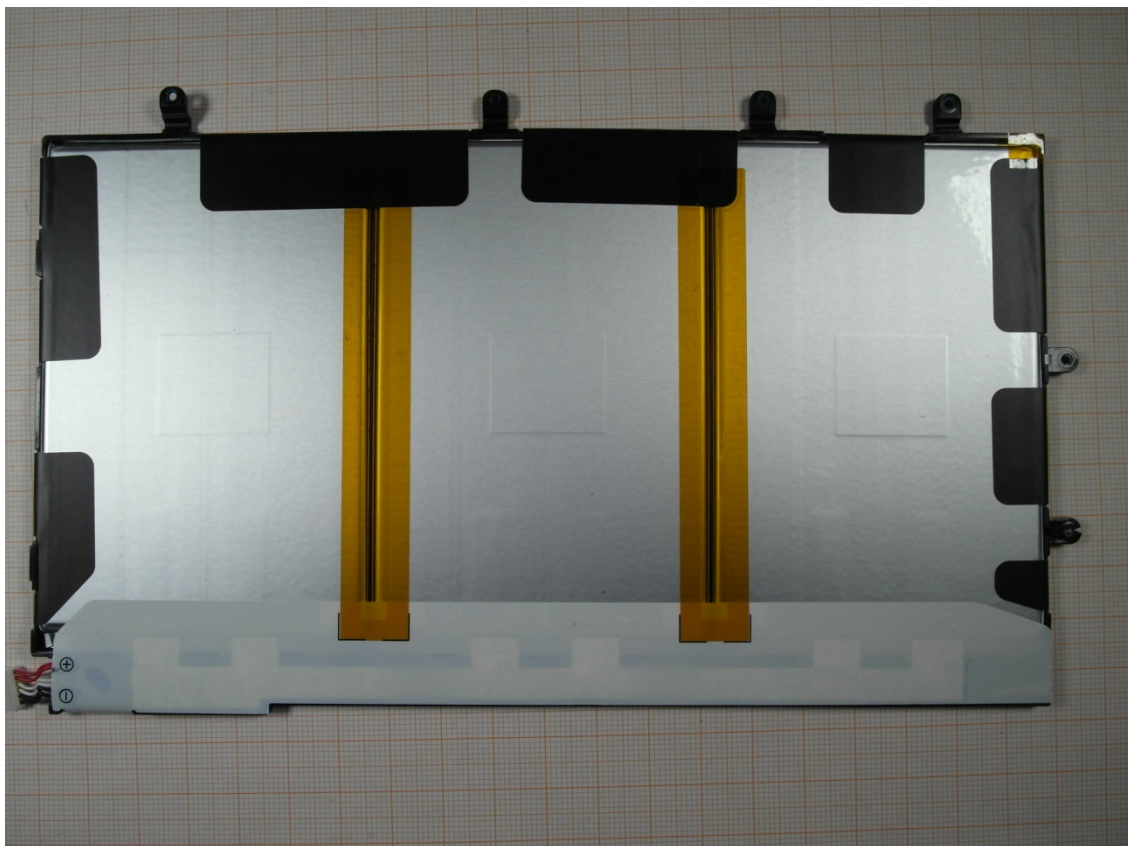
EUT inside, PBA (bottom-middle, chip sets shielded)



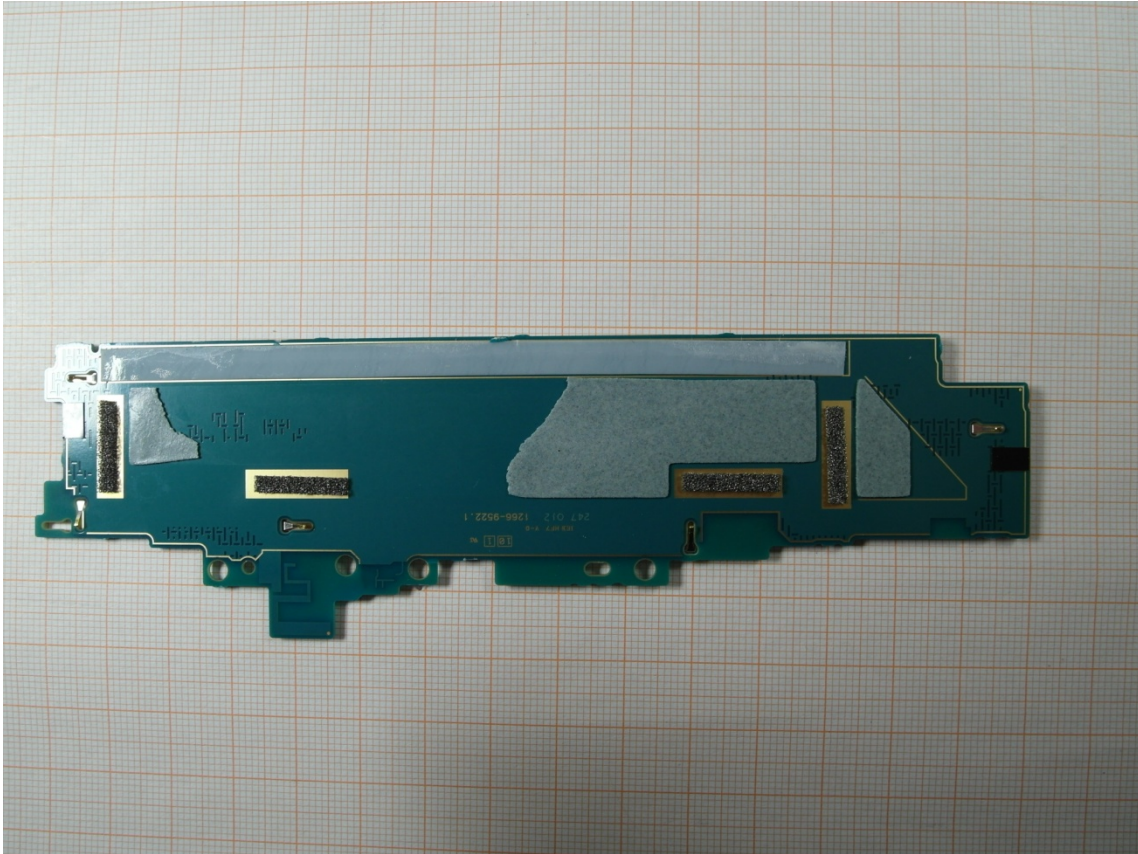
EUT inside, PBA (upper side, chip sets unshielded)



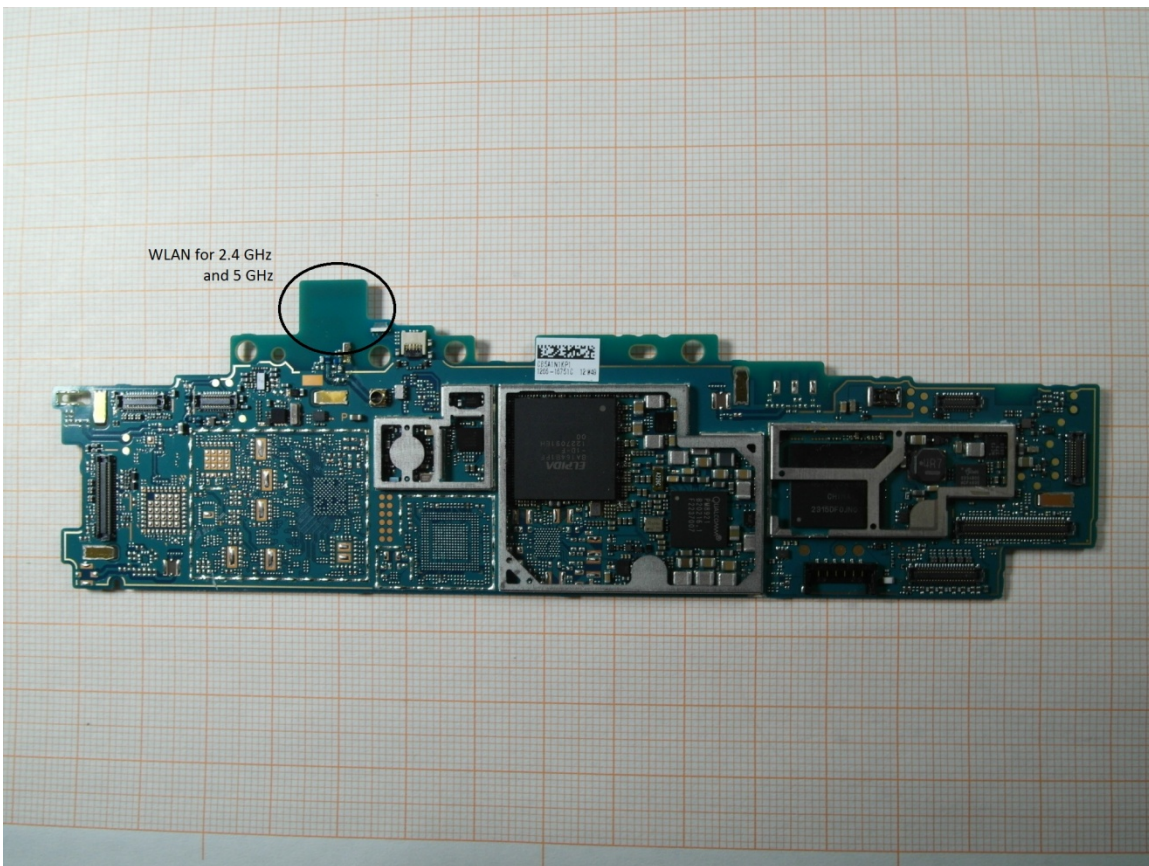
EUT inside, Battery (Li-Ion, front side)



EUT inside, Battery (Li-Ion, rear side)



PBA (rear side)



WLAN antenna marked as circle, PBA (front side, unshielded)