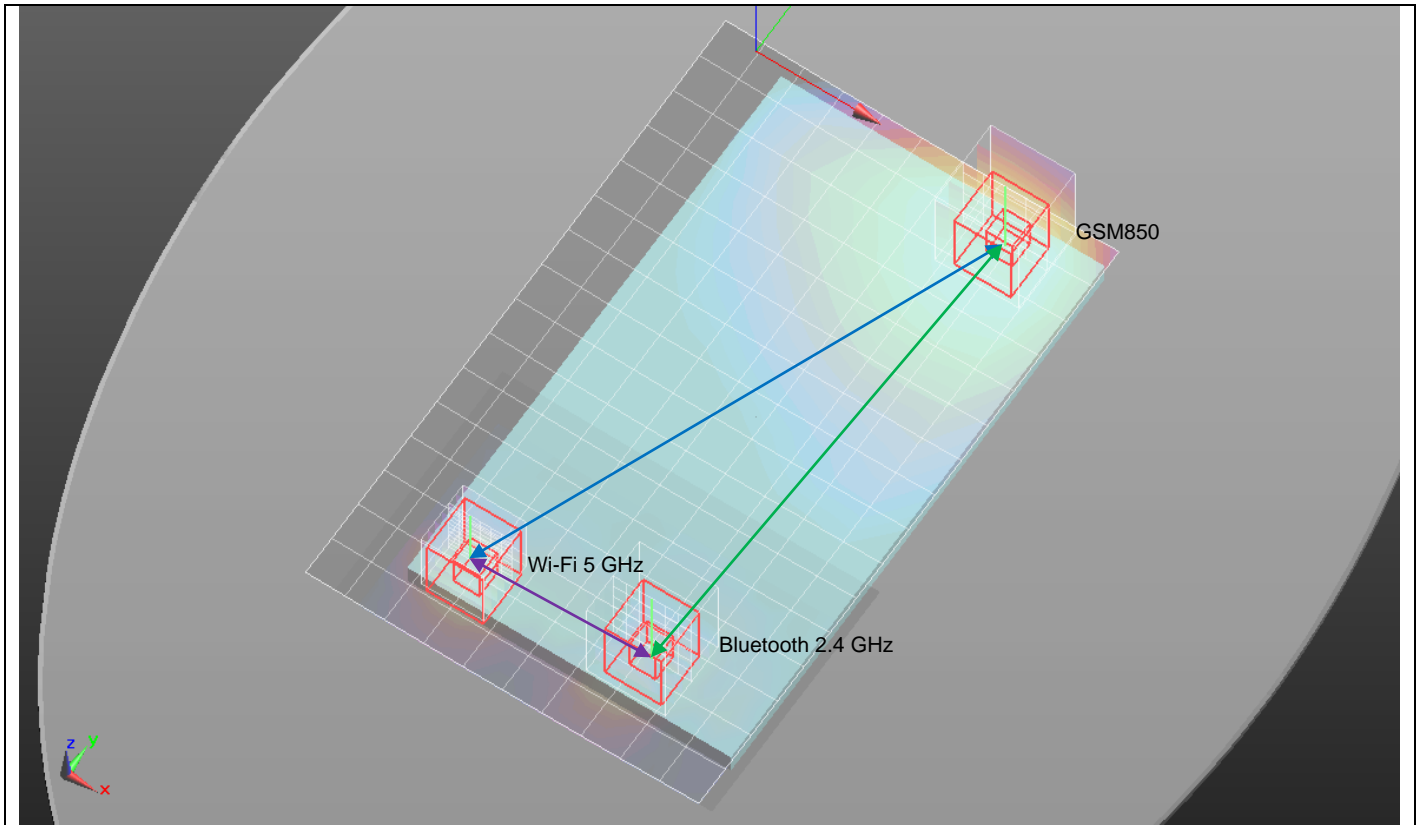


Mode	Peak SAR mW/g	X m	Y m	Z m
GSM 850	1.7	0.0335	0.092	-0.182
Wi-Fi DTS Band	1.62	0.0244	-0.0954	-0.182

d: Calculated distance (mm)
187.6

The Peak Location Separation Distance is computed by using the formula below:

$$\text{SQRT}((X1-X2)^2+(Y1-Y2)^2+(Z1-Z2)^2)$$



Mode	Peak SAR mW/g	X m	Y m	Z m
GSM 850	1.7	0.0335	0.092	-0.182
Wi-Fi UNII Band	1.85	-0.045	-0.096	-0.182

d: Calculated distance (mm)
203.7

Mode	Peak SAR mW/g	X m	Y m	Z m
GSM 850	1.7	0.0335	0.092	-0.182
Bluetooth 2.4 GHz	0.287	0.0232	-0.094	-0.181

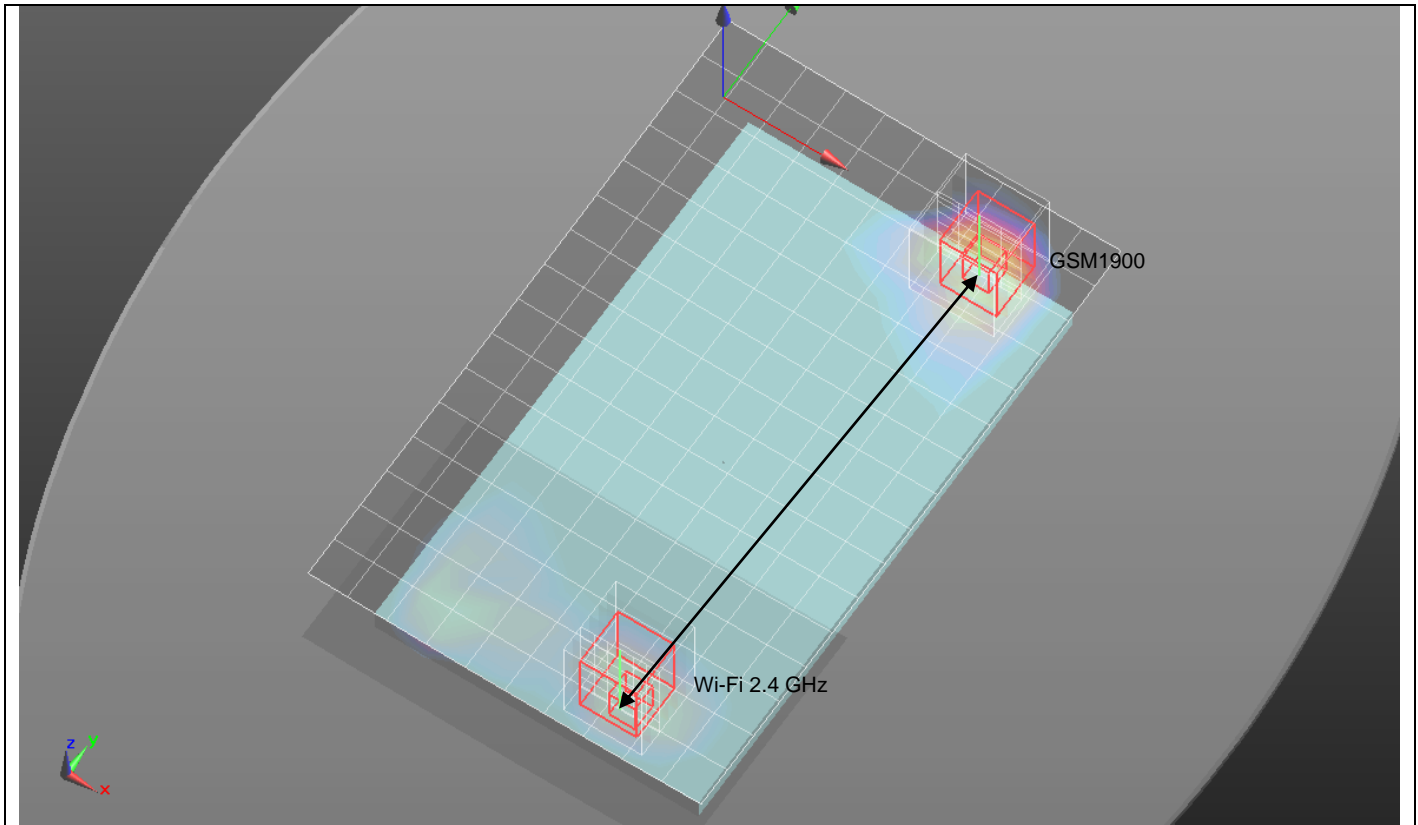
d: Calculated distance (mm)
186.3

Mode	Peak SAR mW/g	X m	Y m	Z m
Wi-Fi UNII Band	1.85	-0.045	-0.096	-0.182
Bluetooth 2.4 GHz	0.287	0.0232	-0.094	-0.181

d: Calculated distance (mm)
68.2

The Peak Location Separation Distance is computed by using the formula below:

$$\text{SQRT}((X1-X2)^2+(Y1-Y2)^2+(Z1-Z2)^2)$$

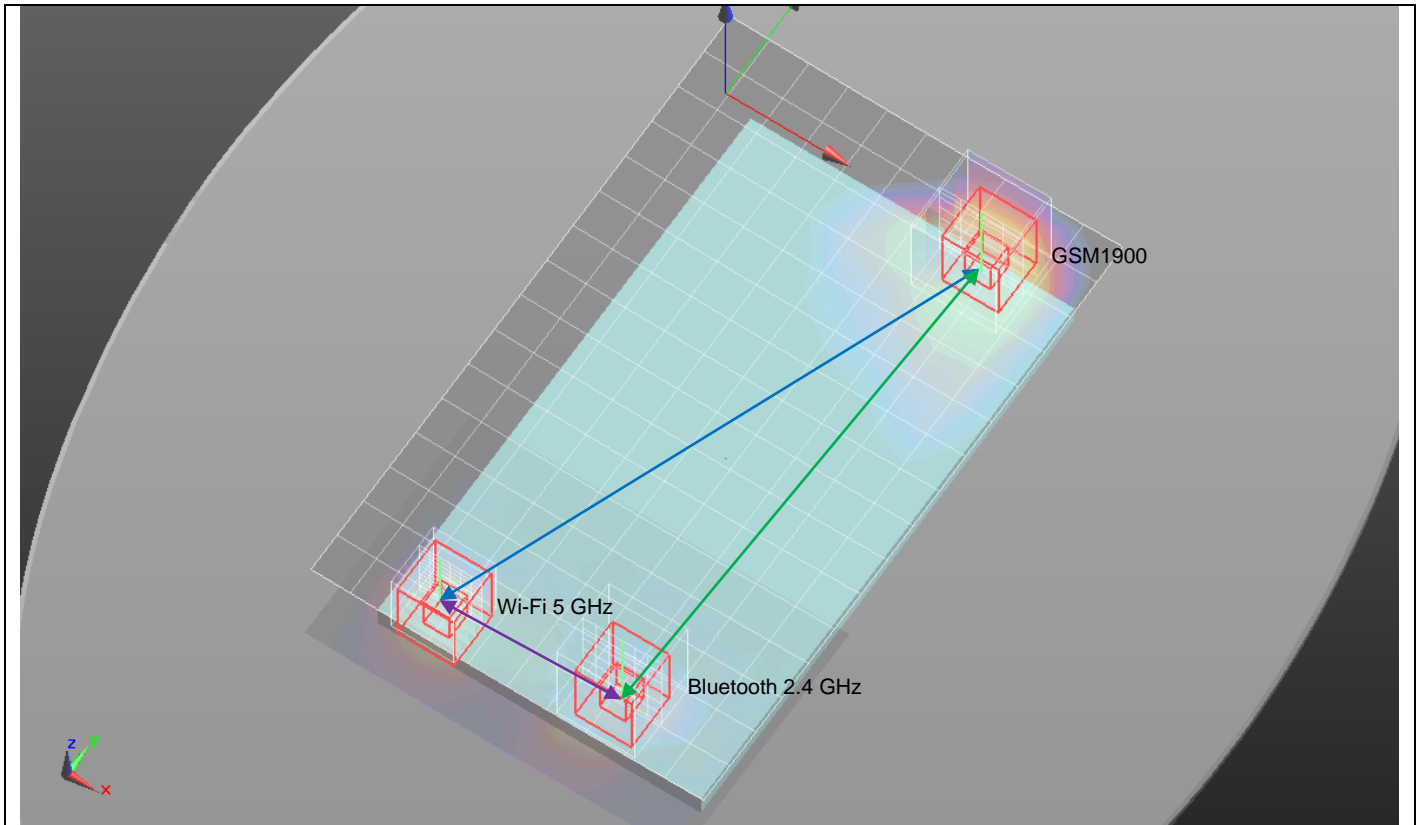


Mode	Peak SAR mW/g	X m	Y m	Z m
GSM 1900	1.6	0.032	0.0985	-0.181
Wi-Fi DTS Band	1.62	0.0244	-0.0954	-0.182

d: Calculated distance (mm)
194.1

The Peak Location Separation Distance is computed by using the formula below:  

$$\text{SQRT}((X1-X2)^2+(Y1-Y2)^2+(Z1-Z2)^2)$$



Mode	Peak SAR mW/g	X m	Y m	Z m
GSM 1900	1.6	0.032	0.0985	-0.181
Wi-Fi UNII Band	1.85	-0.045	-0.096	-0.182

d: Calculated distance (mm)
209.2

Mode	Peak SAR mW/g	X m	Y m	Z m
GSM 1900	1.6	0.032	0.0985	-0.181
Bluetooth 2.4 GHz	0.287	0.0232	-0.094	-0.181

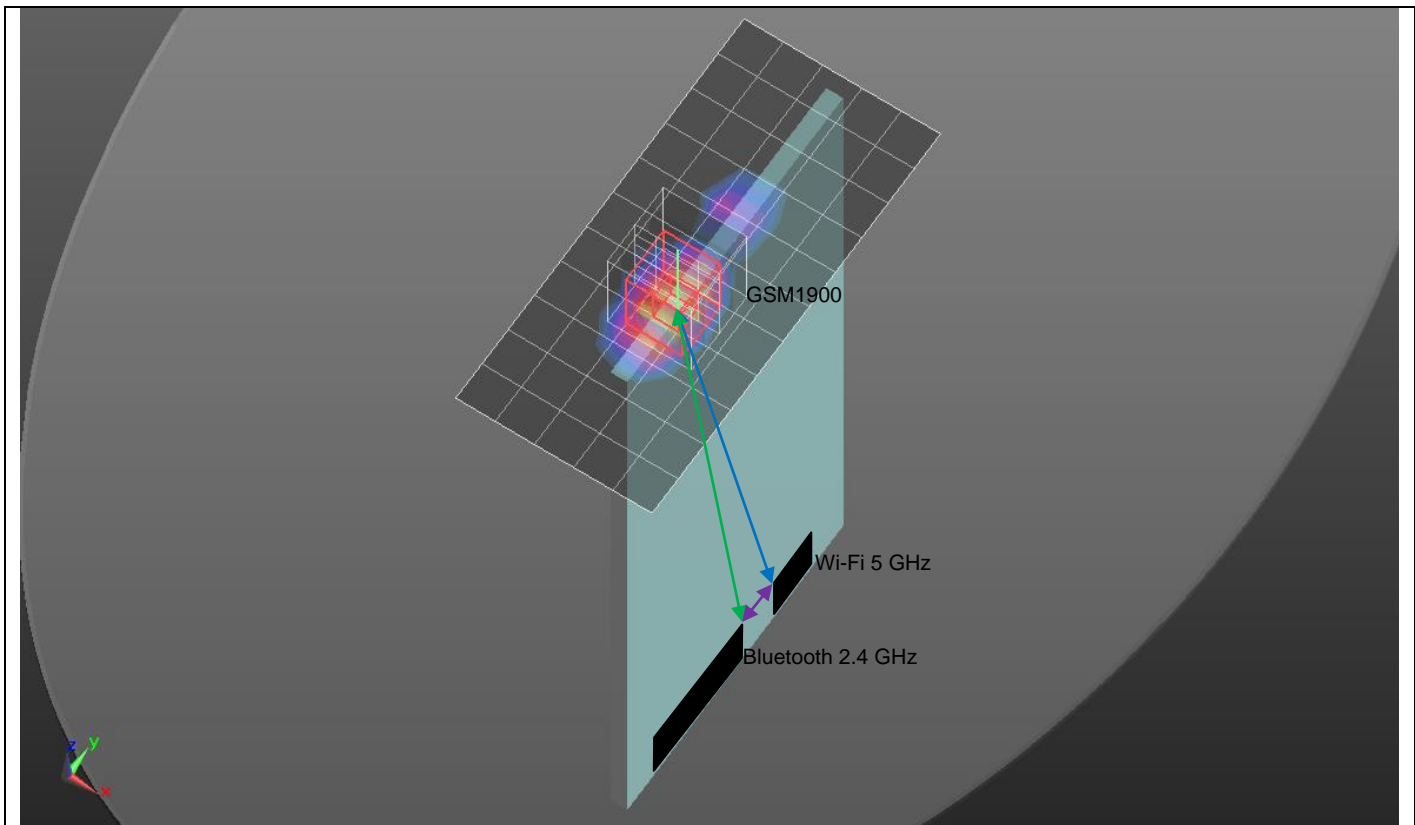
d: Calculated distance (mm)
192.7

Mode	Peak SAR mW/g	X m	Y m	Z m
Wi-Fi UNII Band	1.85	-0.045	-0.096	-0.182
Bluetooth 2.4 GHz	0.287	0.0232	-0.094	-0.181

d: Calculated distance (mm)
68.2

The Peak Location Separation Distance is computed by using the formula below:

$$\text{SQRT}((X1-X2)^2+(Y1-Y2)^2+(Z1-Z2)^2)$$



Mode	Peak SAR mW/g	X m	Y m	Z m
GSM 1900	1.6	0.032	0.0985	-0.181
Wi-Fi UNII Band	N/A	N/A	N/A	N/A

d: Estimated distance (mm)
188.3

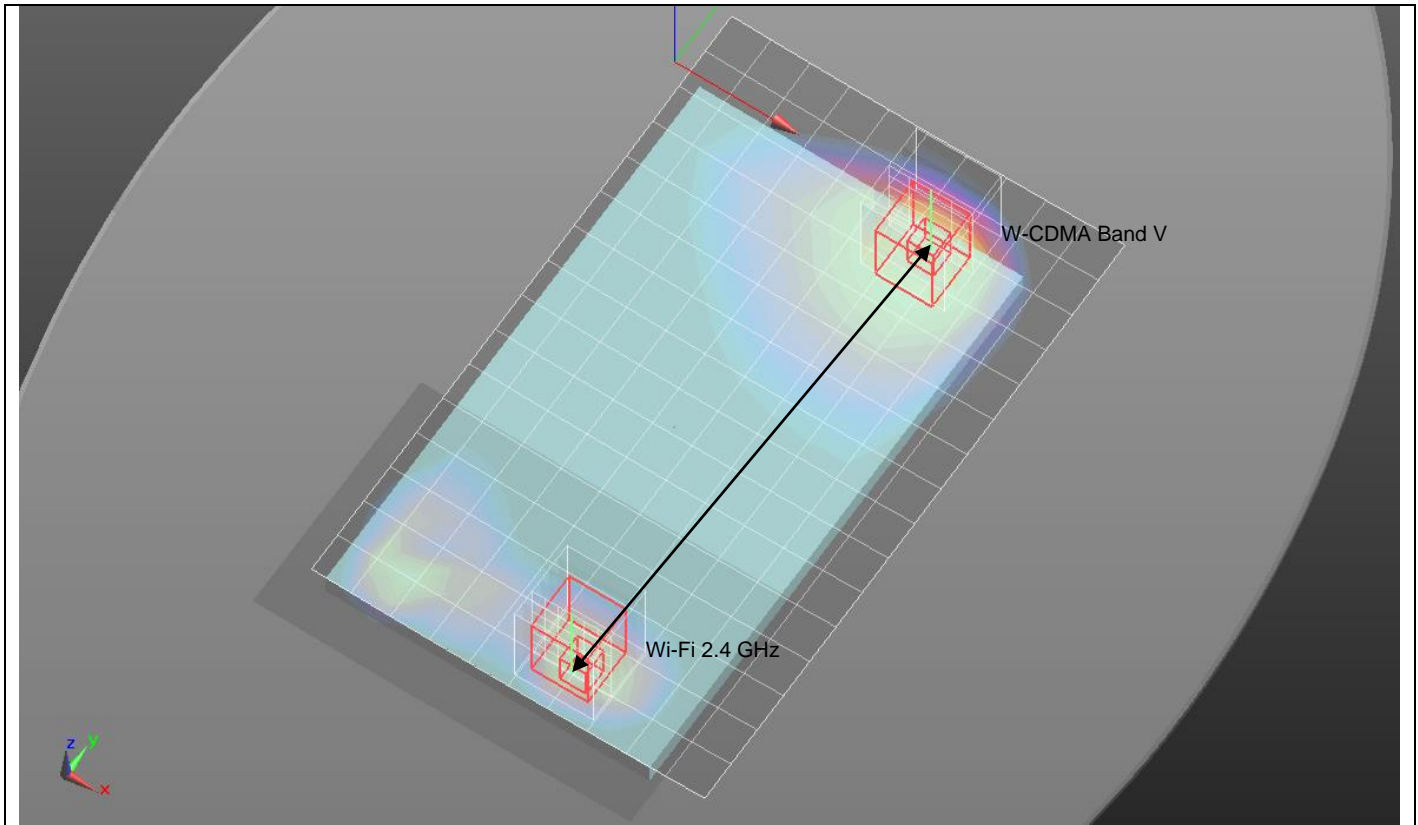
Mode	Peak SAR mW/g	X m	Y m	Z m
GSM 1900	1.6	0.032	0.0985	-0.181
Bluetooth 2.4 GHz	N/A	N/A	N/A	N/A

d: Estimated distance (mm)
185.1

Mode	Peak SAR mW/g	X m	Y m	Z m
Wi-Fi UNII Band	N/A	N/A	N/A	N/A
Bluetooth 2.4 GHz	N/A	N/A	N/A	N/A

d: Calculated distance (mm)
21.2

The Peak Location Separation Distance is estimated by using the antenna locations

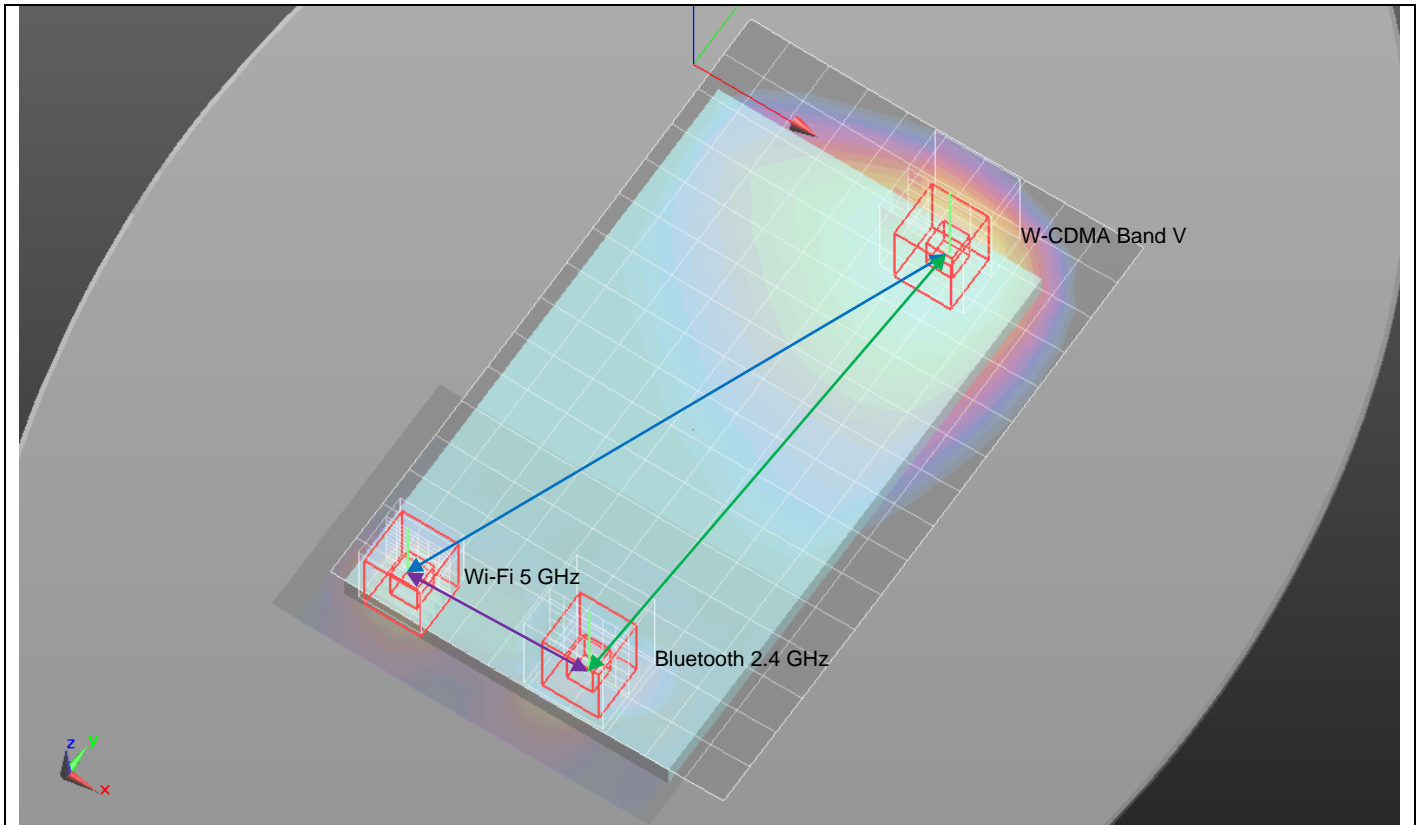


Mode	Peak SAR mW/g	X m	Y m	Z m
W-CDMA Band V	1.62	0.034	0.0955	-0.182
Wi-Fi DTS Band	1.62	0.0244	-0.0954	-0.182

d: Calculated distance (mm)
191.1

The Peak Location Separation Distance is computed by using the formula below:  

$$\text{SQRT}((X1-X2)^2+(Y1-Y2)^2+(Z1-Z2)^2)$$



Mode	Peak SAR mW/g	X m	Y m	Z m
W-CDMA Band V	1.62	0.034	0.0955	-0.182
Wi-Fi UNII Band	1.85	-0.045	-0.096	-0.182

d: Calculated distance (mm)
207.2

Mode	Peak SAR mW/g	X m	Y m	Z m
W-CDMA Band V	1.62	0.034	0.0955	-0.182
Bluetooth 2.4 GHz	0.287	0.0232	-0.094	-0.181

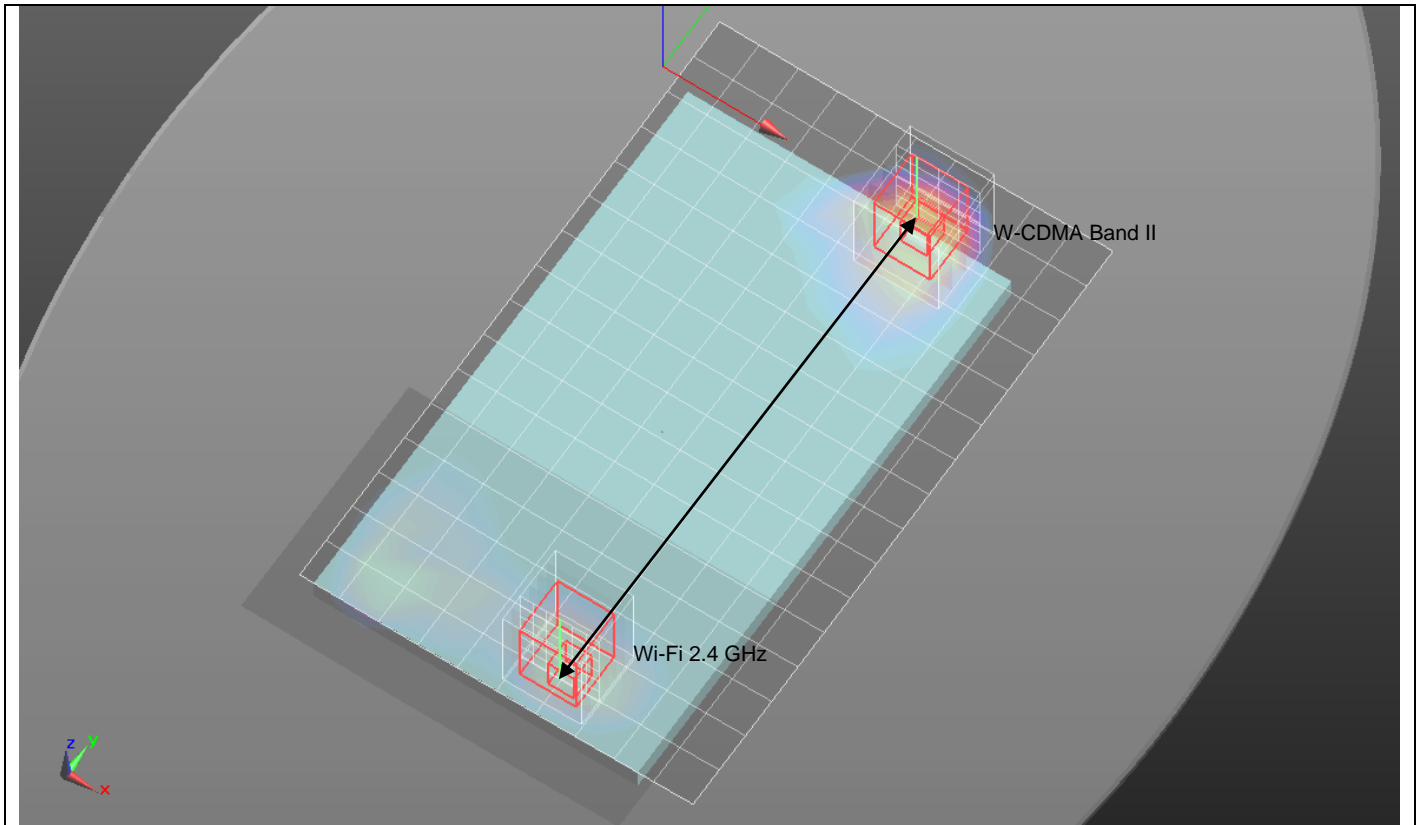
d: Calculated distance (mm)
189.8

Mode	Peak SAR mW/g	X m	Y m	Z m
Wi-Fi UNII Band	1.85	-0.045	-0.096	-0.182
Bluetooth 2.4 GHz	0.287	0.0232	-0.094	-0.181

d: Calculated distance (mm)
68.2

The Peak Location Separation Distance is computed by using the formula below:

$$\text{SQRT}((X1-X2)^2+(Y1-Y2)^2+(Z1-Z2)^2)$$



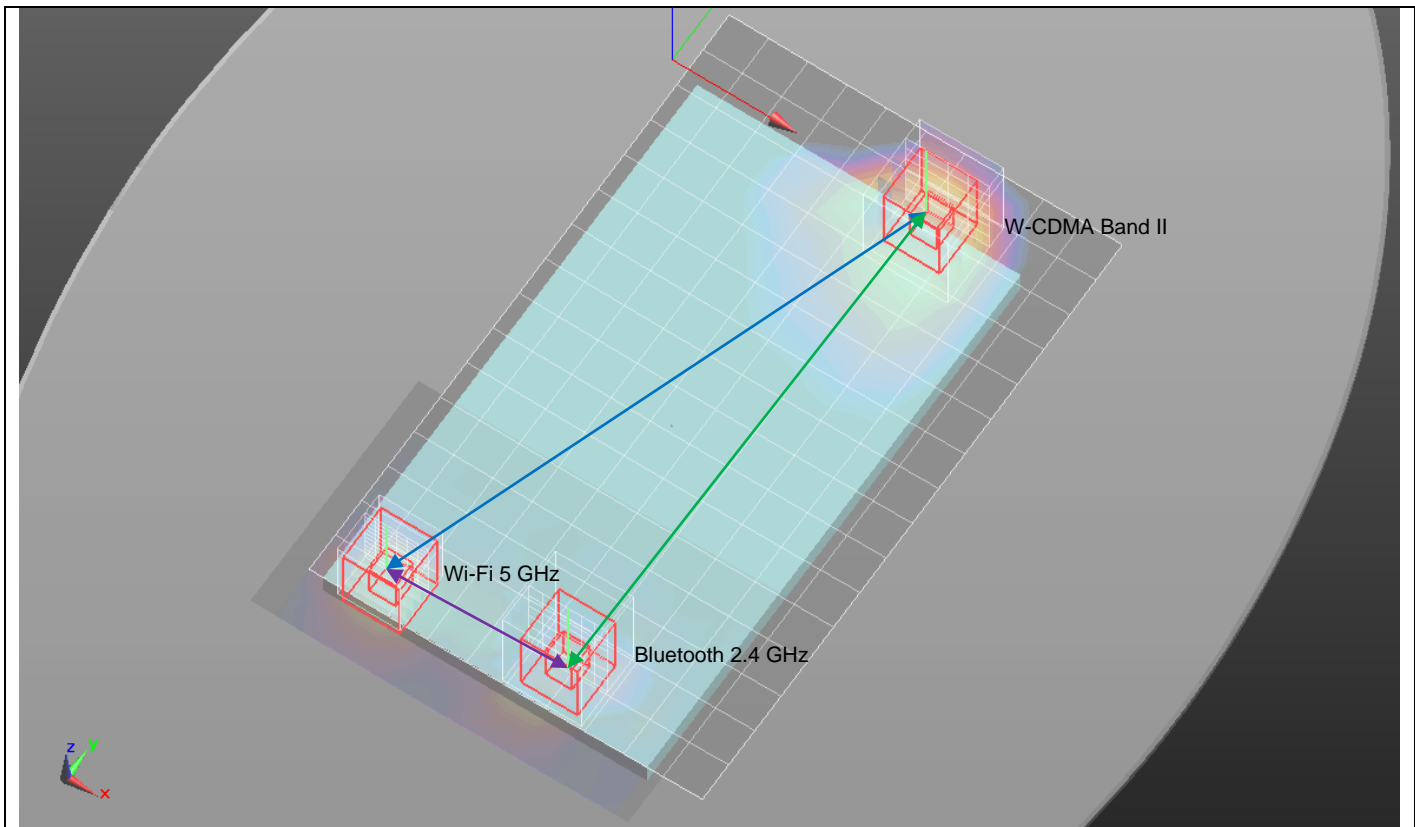
Mode	Peak SAR mW/g	X m	Y m	Z m
W-CDMA Band II	1.61	0.026	0.107	-0.181
Wi-Fi DTS Band	1.62	0.0244	-0.0954	-0.182

d: Calculated distance (mm)
202.4

The Peak Location Separation Distance is computed by using the formula below:

$$\text{SQRT}((X1-X2)^2+(Y1-Y2)^2+(Z1-Z2)^2)$$





Mode	Peak SAR mW/g	X m	Y m	Z m
W-CDMA Band II	1.61	0.026	0.107	-0.181
Wi-Fi UNII Band	1.85	-0.045	-0.096	-0.182

d: Calculated distance (mm)				
215.1				

Mode	Peak SAR mW/g	X m	Y m	Z m
W-CDMA Band II	1.61	0.026	0.107	-0.181
Bluetooth 2.4 GHz	0.287	0.0232	-0.094	-0.181

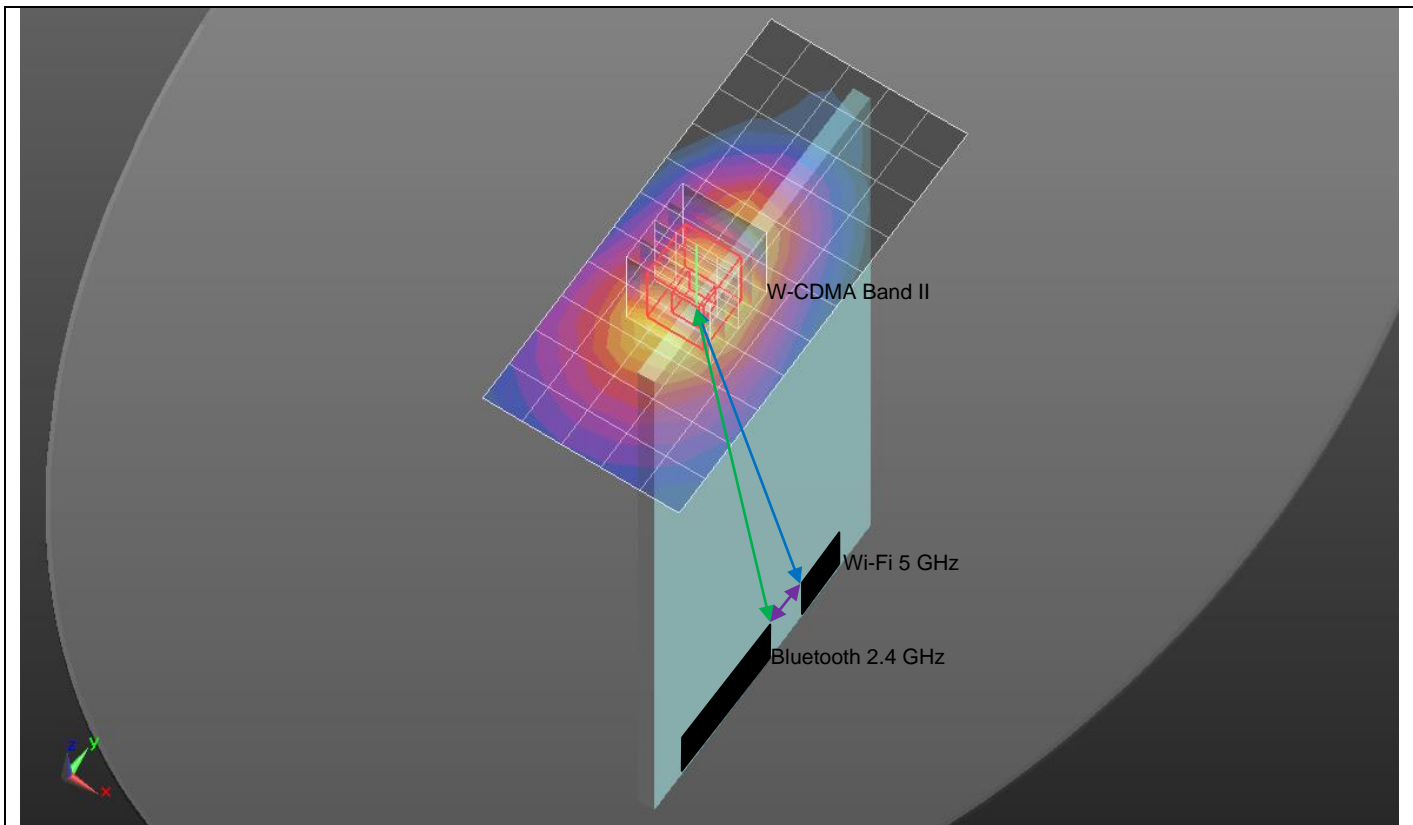
d: Calculated distance (mm)				
201.0				

Mode	Peak SAR mW/g	X m	Y m	Z m
Wi-Fi UNII Band	1.85	-0.045	-0.096	-0.182
Bluetooth 2.4 GHz	0.287	0.0232	-0.094	-0.181

d: Calculated distance (mm)				
68.2				

The Peak Location Separation Distance is computed by using the formula below:

$$\text{SQRT}((X1-X2)^2+(Y1-Y2)^2+(Z1-Z2)^2)$$



Mode	Peak SAR mW/g	X m	Y m	Z m
W-CDMA Band II	1.61	0.026	0.107	-0.181
Wi-Fi UNII Band	N/A	N/A	N/A	N/A

d: Estimated distance (mm)
188.3

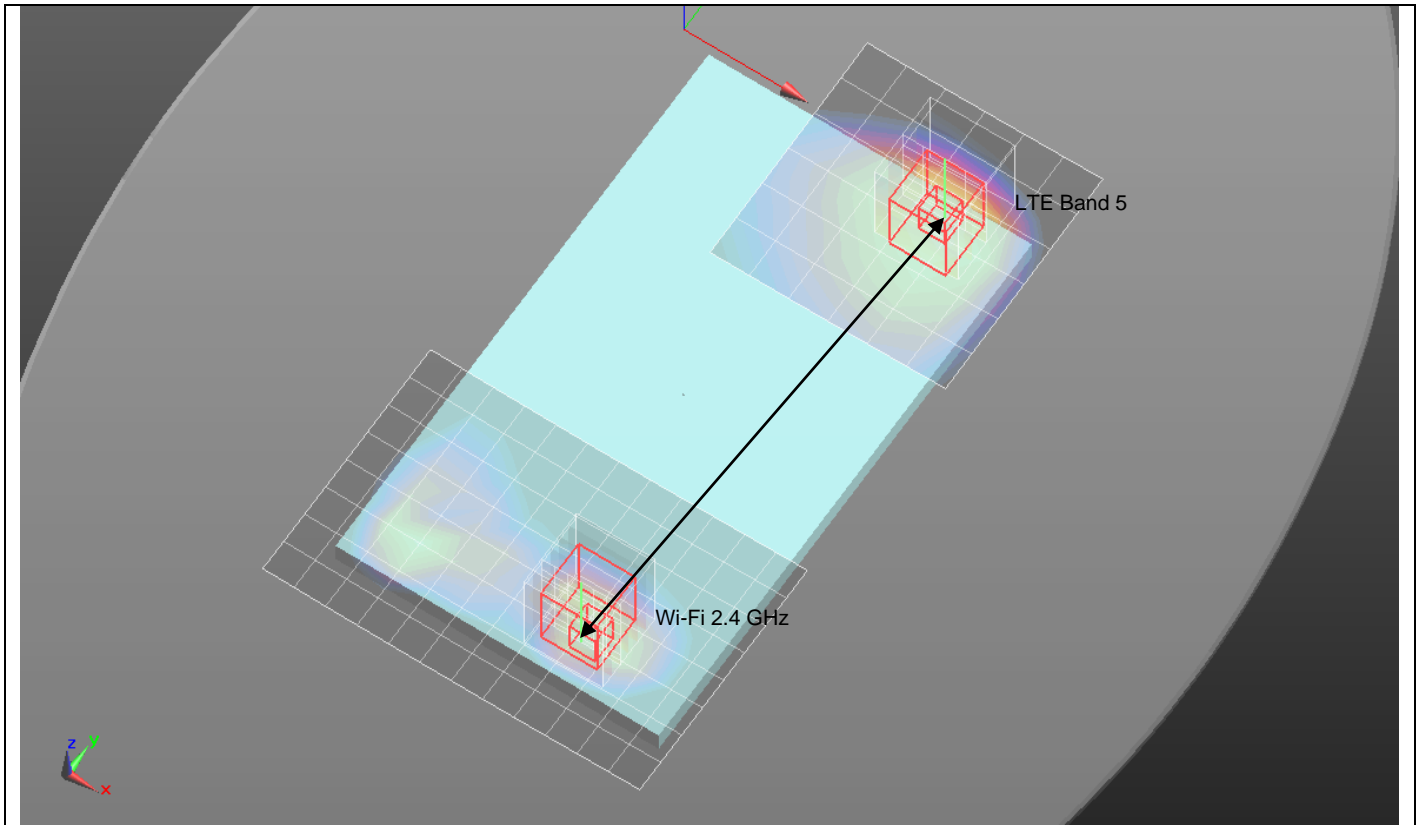
Mode	Peak SAR mW/g	X m	Y m	Z m
W-CDMA Band II	1.61	0.026	0.107	-0.181
Bluetooth 2.4 GHz	N/A	N/A	N/A	N/A

d: Estimated distance (mm)
185.1

Mode	Peak SAR mW/g	X m	Y m	Z m
Wi-Fi UNII Band	N/A	N/A	N/A	N/A
Bluetooth 2.4 GHz	N/A	N/A	N/A	N/A

d: Calculated distance (mm)
21.2

The Peak Location Separation Distance is estimated by using the antenna locations

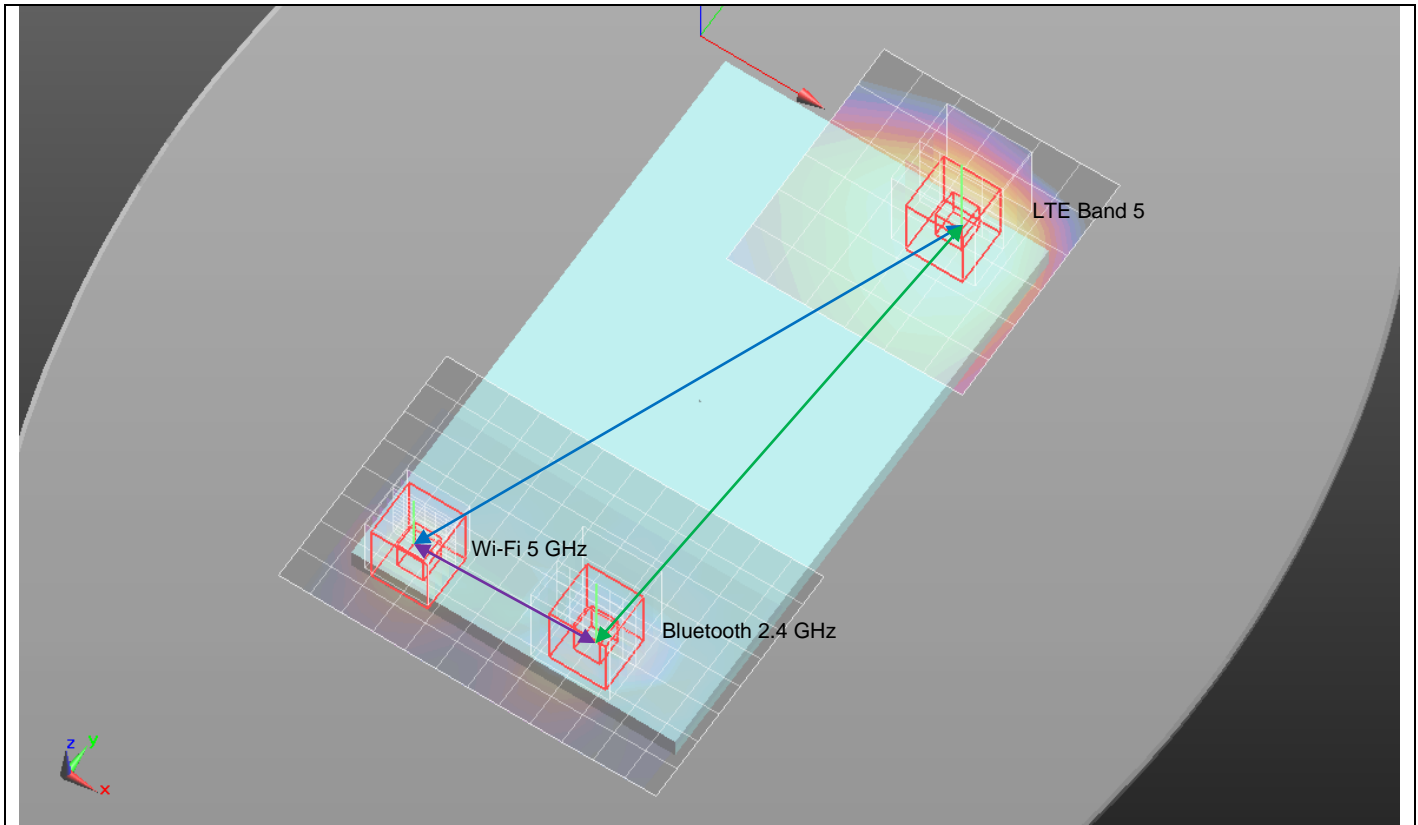


Mode	Peak SAR mW/g	X m	Y m	Z m
LTE Band 5	1.74	0.0355	0.096	-0.182
Wi-Fi DTS Band	1.62	0.0244	-0.0954	-0.182

d: Calculated distance (mm)
191.7

The Peak Location Separation Distance is computed by using the formula below:

$$\text{SQRT}((X1-X2)^2+(Y1-Y2)^2+(Z1-Z2)^2)$$



Mode	Peak SAR mW/g	X m	Y m	Z m
LTE Band 5	1.74	0.0355	0.096	-0.182
Wi-Fi UNII Band	1.85	-0.045	-0.096	-0.182

d: Calculated distance (mm)
208.2

Mode	Peak SAR mW/g	X m	Y m	Z m
LTE Band 5	1.74	0.0355	0.096	-0.182
Bluetooth 2.4 GHz	0.287	0.0232	-0.094	-0.181

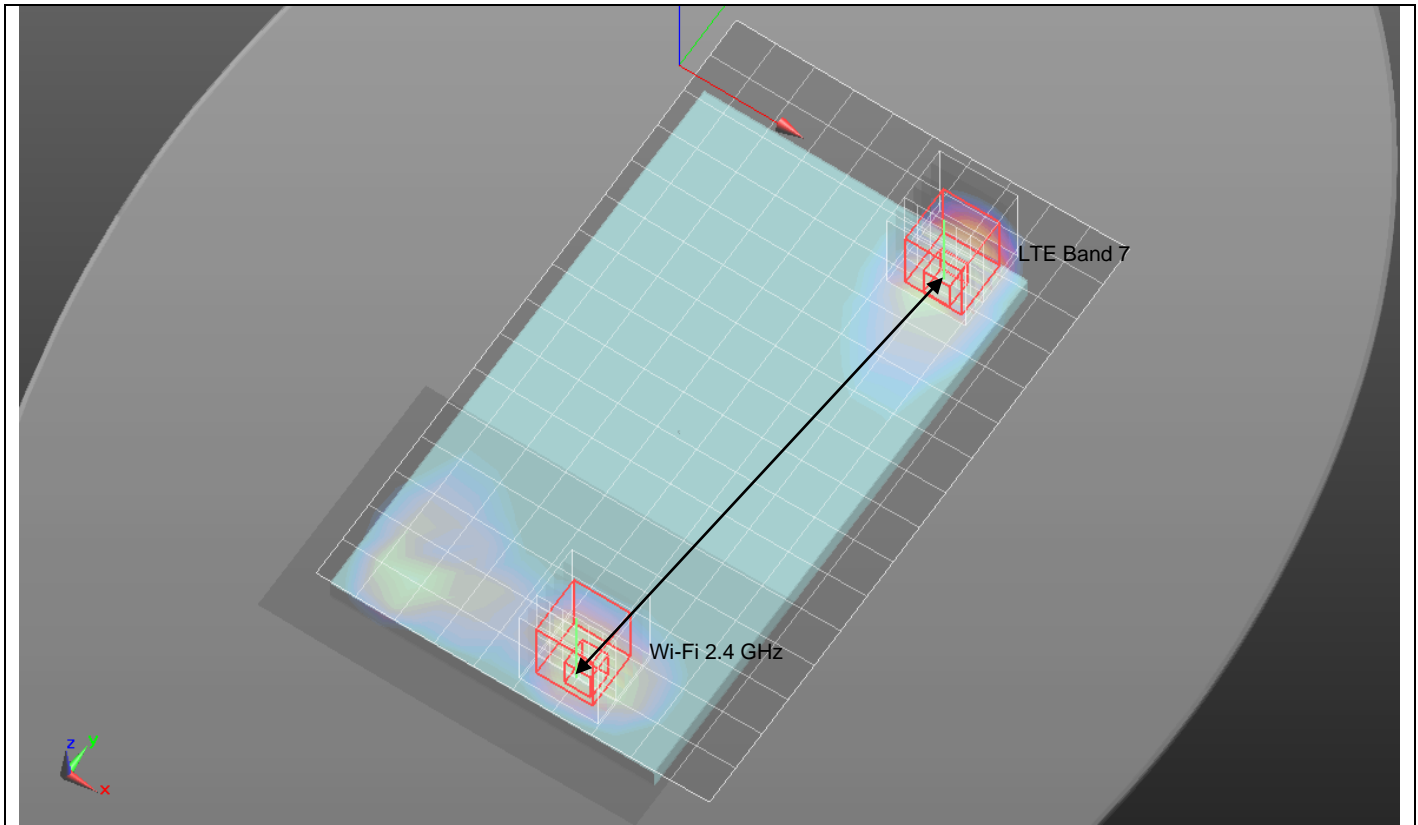
d: Calculated distance (mm)
190.4

Mode	Peak SAR mW/g	X m	Y m	Z m
Wi-Fi UNII Band	1.85	-0.045	-0.096	-0.182
Bluetooth 2.4 GHz	0.287	0.0232	-0.094	-0.181

d: Calculated distance (mm)
68.2

The Peak Location Separation Distance is computed by using the formula below:

$$\text{SQRT}((X1-X2)^2+(Y1-Y2)^2+(Z1-Z2)^2)$$

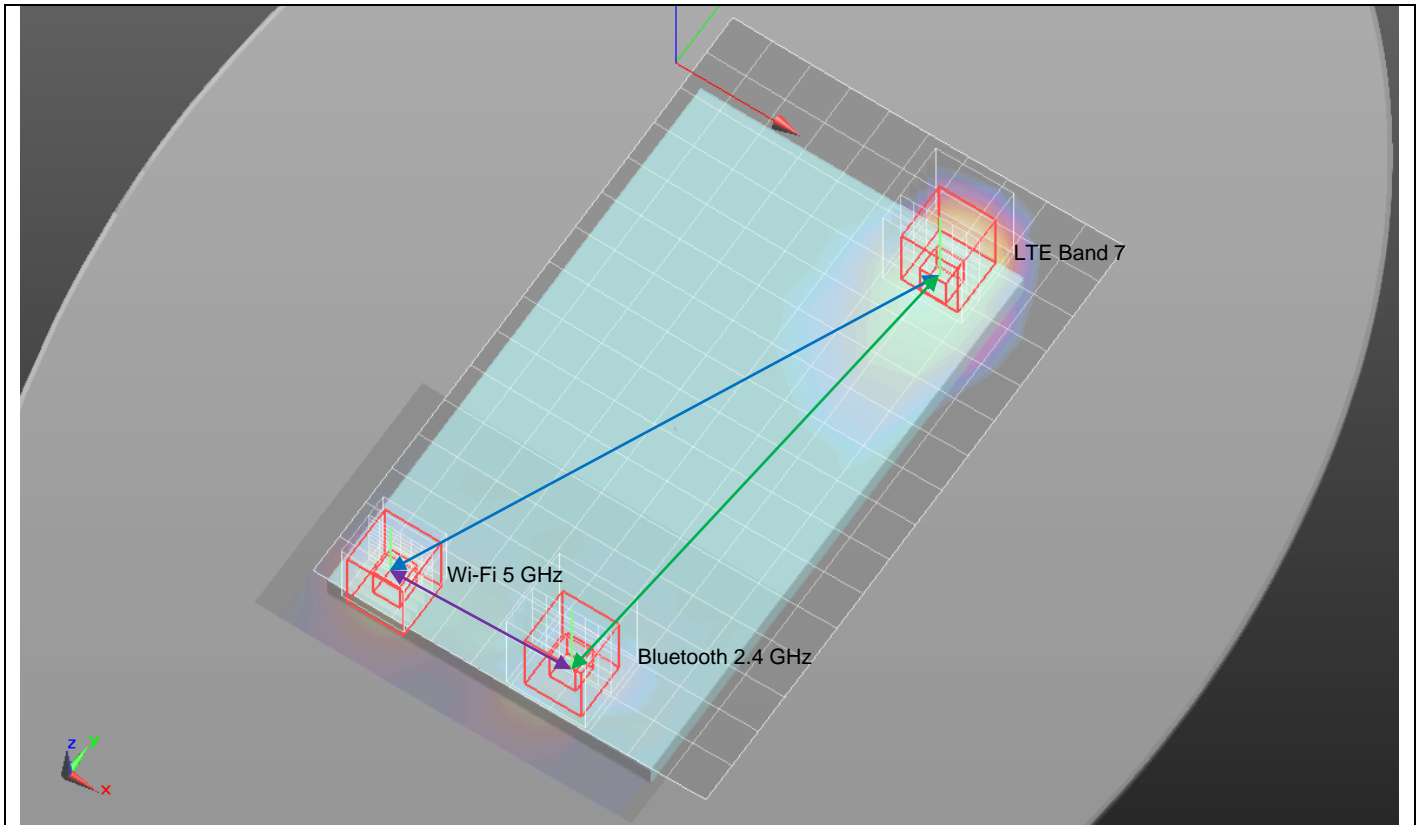


Mode	Peak SAR mW/g	X m	Y m	Z m
LTE Band 7	1.5	0.0415	0.089	-0.181
Wi-Fi DTS Band	1.62	0.0244	-0.0954	-0.182

d: Calculated distance (mm)
185.2

The Peak Location Separation Distance is computed by using the formula below:

$$\text{SQRT}((X1-X2)^2+(Y1-Y2)^2+(Z1-Z2)^2)$$



Mode	Peak SAR mW/g	X m	Y m	Z m
LTE Band 7	1.5	0.0415	0.089	-0.181
Wi-Fi UNII Band	1.85	-0.045	-0.096	-0.182

d: Calculated distance (mm)
204.2

Mode	Peak SAR mW/g	X m	Y m	Z m
LTE Band 7	1.5	0.0415	0.089	-0.181
Bluetooth 2.4 GHz	0.287	0.0232	-0.094	-0.181

d: Calculated distance (mm)
183.9

Mode	Peak SAR mW/g	X m	Y m	Z m
Wi-Fi UNII Band	1.85	-0.045	-0.096	-0.182
Bluetooth 2.4 GHz	0.287	0.0232	-0.094	-0.181

d: Calculated distance (mm)
68.2

The Peak Location Separation Distance is computed by using the formula below:

$$\text{SQRT}((X1-X2)^2+(Y1-Y2)^2+(Z1-Z2)^2)$$