

20140819 SystemPerformanceCheck-D1900V2 SN 5d043

Frequency: 1900 MHz; Duty Cycle: 1:1; Room Ambient Temperature: 24.0°C; Liquid Temperature: 23.0°C

Medium parameters used: $f = 1900$ MHz; $\sigma = 1.508$ S/m; $\epsilon_r = 51.993$; $\rho = 1000$ kg/m³

DASY5 Configuration:

- Area Scan Setting: Find Secondary Maximum Within: 2.0 dB and with a peak SAR value greater than 0.0012W/kg
- Averaged Fast SAR: Polynomial fit
- Electronics: DAE4 Sn1359; Calibrated: 2/17/2014
- Probe: EX3DV3 - SN3531; ConvF(8.29, 8.29, 8.29); Calibrated: 11/21/2013;
- Sensor-Surface: 2.5mm (Mechanical Surface Detection)
- Phantom: ELI B v4.0; Type: QDOVA002AA; Serial: 1196

Body/Pin=100 mW/Area Scan (61x61x1): Interpolated grid: dx=1.500 mm, dy=1.500 mm

Reference Value = 32.958 V/m; Power Drift = -0.06 dB

Fast SAR: SAR(1 g) = 3.69 W/kg; SAR(10 g) = 1.86 W/kg

Maximum value of SAR (interpolated) = 4.94 W/kg

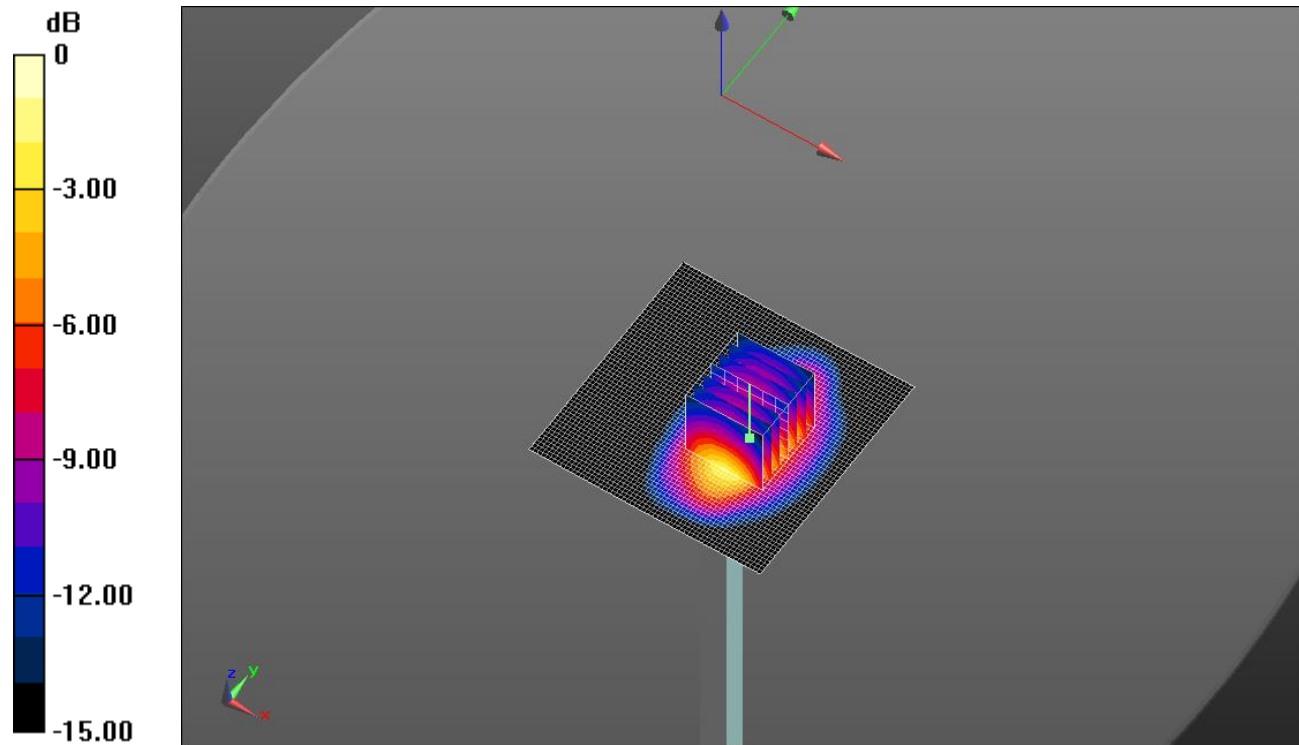
Body/Pin=100 mW/Zoom Scan (7x7x7)/Cube 0: Measurement grid: dx=5mm, dy=5mm, dz=5mm

Reference Value = 32.958 V/m; Power Drift = -0.06 dB

Peak SAR (extrapolated) = 6.09 W/kg

SAR(1 g) = 3.81 W/kg; SAR(10 g) = 2.12 W/kg

Maximum value of SAR (measured) = 4.92 W/kg

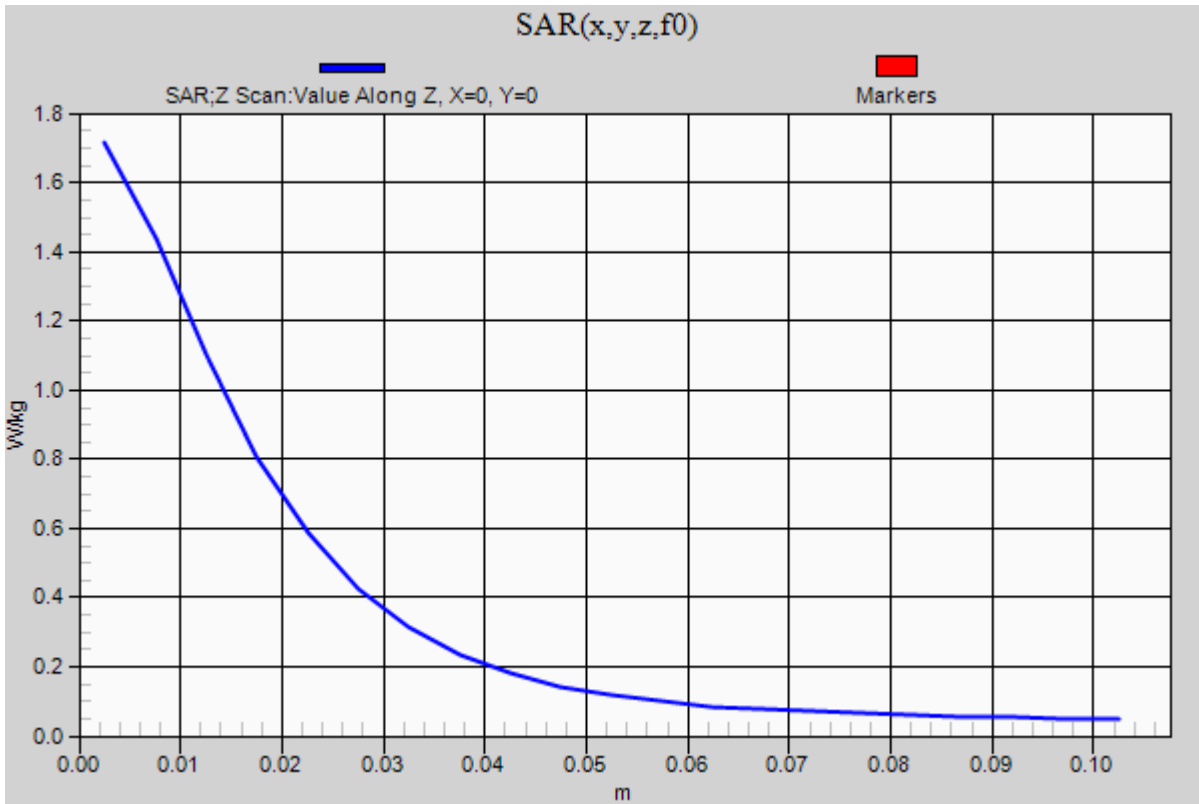


0 dB = 4.92 W/kg = 6.92 dBW/kg

20140819 SystemPerformanceCheck-D1900V2 SN 5d043

Frequency: 1900 MHz; Duty Cycle: 1:1

Body/Pin=100 mW/Z Scan (1x1x21): Measurement grid: dx=20mm, dy=20mm, dz=5mm
Maximum value of SAR (measured) = 1.72 W/kg



20140819 SystemPerformanceCheck-D835V2 SN 4d002

Frequency: 835 MHz; Duty Cycle: 1:1; Room Ambient Temperature: 24.0°C; Liquid Temperature: 23.0°C
 Medium parameters used: $f = 835 \text{ MHz}$; $\sigma = 0.999 \text{ S/m}$; $\epsilon_r = 53.017$; $\rho = 1000 \text{ kg/m}^3$

DASY5 Configuration:

- Area Scan Setting: Find Secondary Maximum Within: 2.0 dB and with a peak SAR value greater than 0.0012W/kg
- Averaged Fast SAR: Polynomial fit
- Electronics: DAE4 Sn1359; Calibrated: 2/17/2014
- Probe: EX3DV3 - SN3531; ConvF(10.36, 10.36, 10.36); Calibrated: 11/21/2013;
- Sensor-Surface: 2.5mm (Mechanical Surface Detection)
- Phantom: ELI A v5.0; Type: QDOVA002AA; Serial: S/n:1198

Body/Pin=100 mW/Area Scan (61x61x1): Interpolated grid: dx=1.500 mm, dy=1.500 mm

Reference Value = 30.623 V/m; Power Drift = -0.16 dB

Fast SAR: SAR(1 g) = 0.957 W/kg; SAR(10 g) = 0.647 W/kg

Maximum value of SAR (interpolated) = 1.14 W/kg

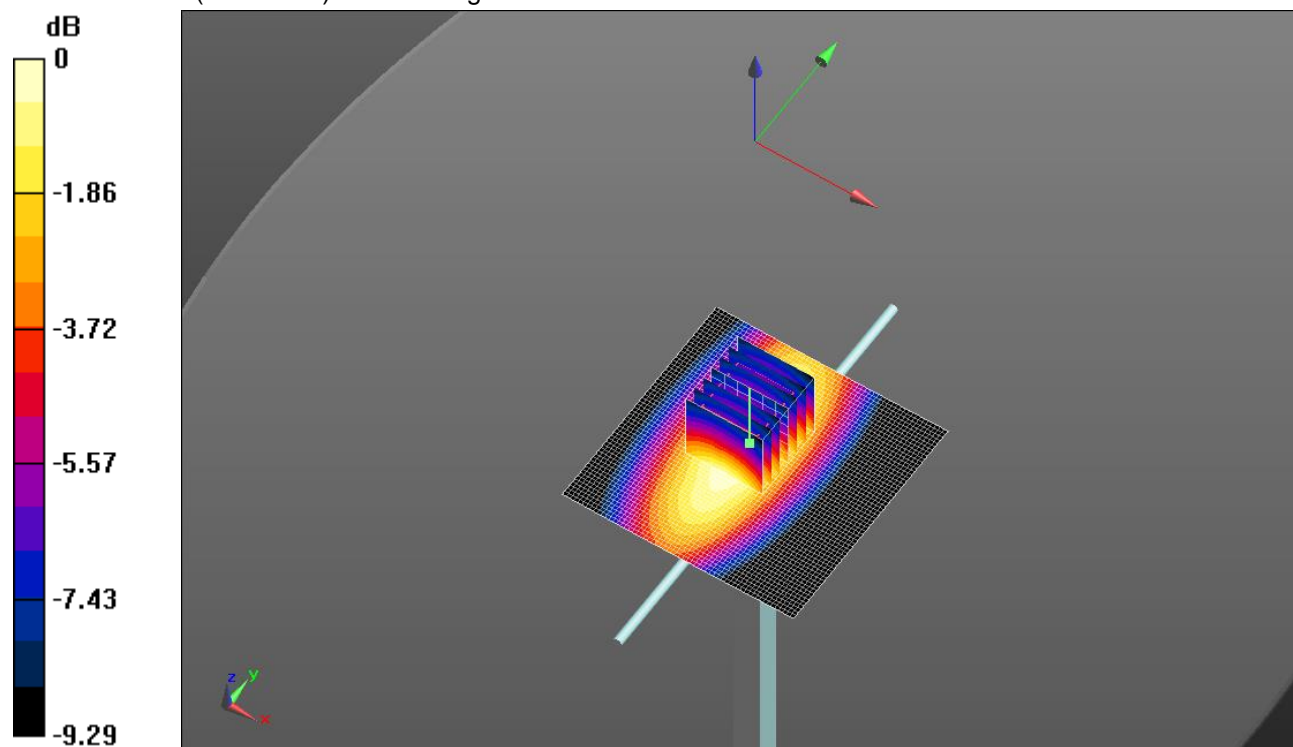
Body/Pin=100 mW/Zoom Scan (7x7x7)/Cube 0: Measurement grid: dx=5mm, dy=5mm, dz=5mm

Reference Value = 30.623 V/m; Power Drift = -0.16 dB

Peak SAR (extrapolated) = 1.29 W/kg

SAR(1 g) = 0.956 W/kg; SAR(10 g) = 0.656 W/kg

Maximum value of SAR (measured) = 1.12 W/kg

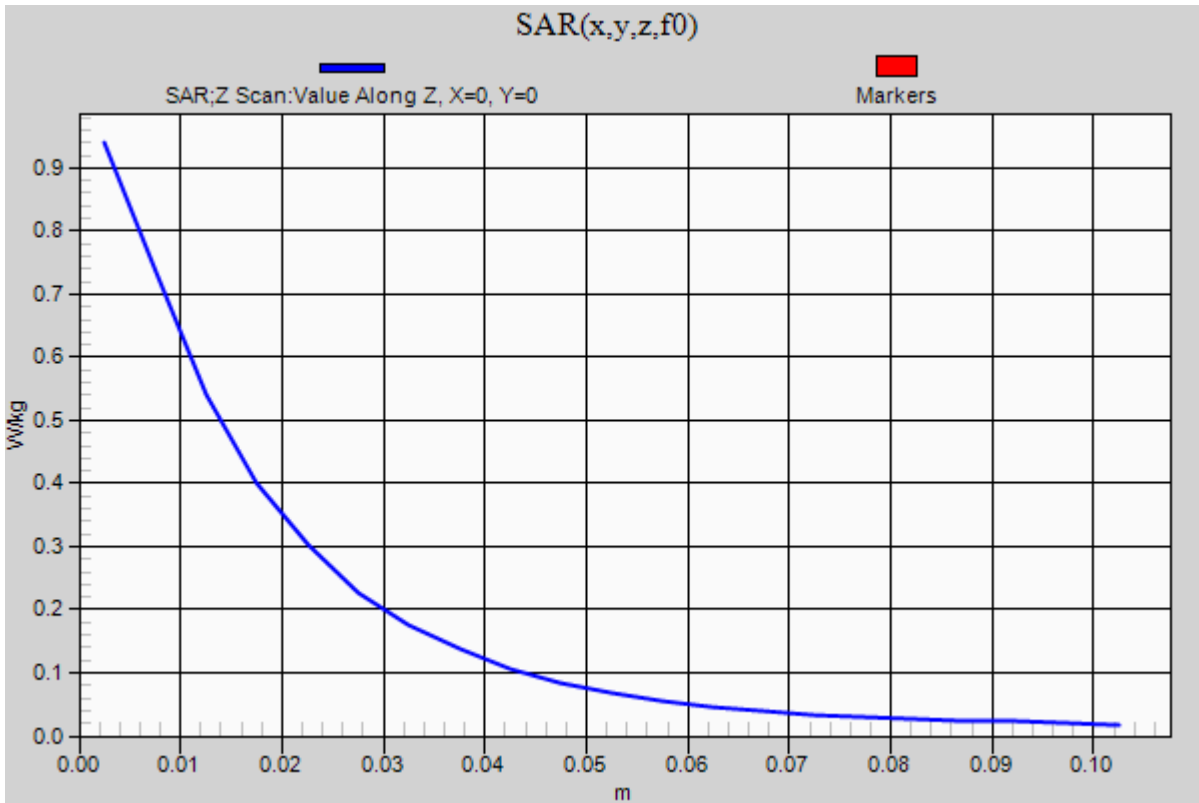


0 dB = 1.12 W/kg = 0.49 dBW/kg

20140819 SystemPerformanceCheck-D835V2 SN 4d002

Frequency: 835 MHz; Duty Cycle: 1:1

Body/Pin=100 mW/Z Scan (1x1x21): Measurement grid: dx=20mm, dy=20mm, dz=5mm
Maximum value of SAR (measured) = 0.940 W/kg



20140825 SystemPerformanceCheck-D2600V2 SN 1006

Frequency: 2600 MHz; Duty Cycle: 1:1; Room Ambient Temperature: 24.0°C; Liquid Temperature: 23.0°C
 Medium parameters used: $f = 2600 \text{ MHz}$; $\sigma = 2.222 \text{ S/m}$; $\epsilon_r = 50.35$; $\rho = 1000 \text{ kg/m}^3$

DASY5 Configuration:

- Area Scan Setting: Find Secondary Maximum Within: 2.0 dB and with a peak SAR value greater than 0.0012W/kg
- Averaged Fast SAR: Polynomial fit
- Electronics: DAE4 Sn1359; Calibrated: 2/17/2014
- Probe: EX3DV3 - SN3531; ConvF(7.12, 7.12, 7.12); Calibrated: 11/21/2013;
- Sensor-Surface: 2.5mm (Mechanical Surface Detection)
- Phantom: ELI B v4.0; Type: QDOVA002AA; Serial: 1196

Body/Pin=100 mW/Area Scan (71x71x1): Interpolated grid: dx=1.200 mm, dy=1.200 mm

Reference Value = 32.507 V/m; Power Drift = -0.09 dB

Fast SAR: SAR(1 g) = 5.62 W/kg; SAR(10 g) = 2.48 W/kg

Maximum value of SAR (interpolated) = 8.29 W/kg

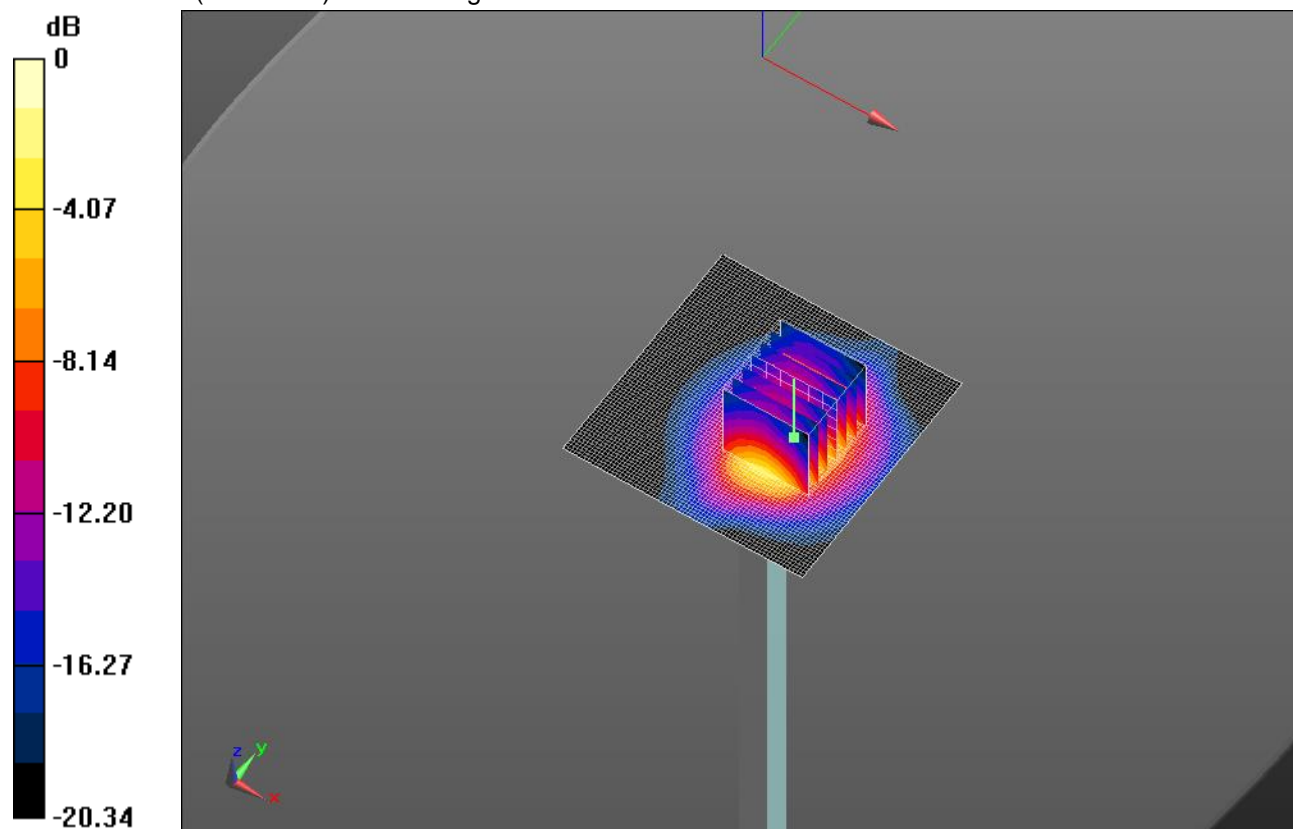
Body/Pin=100 mW/Zoom Scan (7x7x7)/Cube 0: Measurement grid: dx=5mm, dy=5mm, dz=5mm

Reference Value = 32.507 V/m; Power Drift = -0.09 dB

Peak SAR (extrapolated) = 10.6 W/kg

SAR(1 g) = 5.53 W/kg; SAR(10 g) = 2.61 W/kg

Maximum value of SAR (measured) = 7.73 W/kg

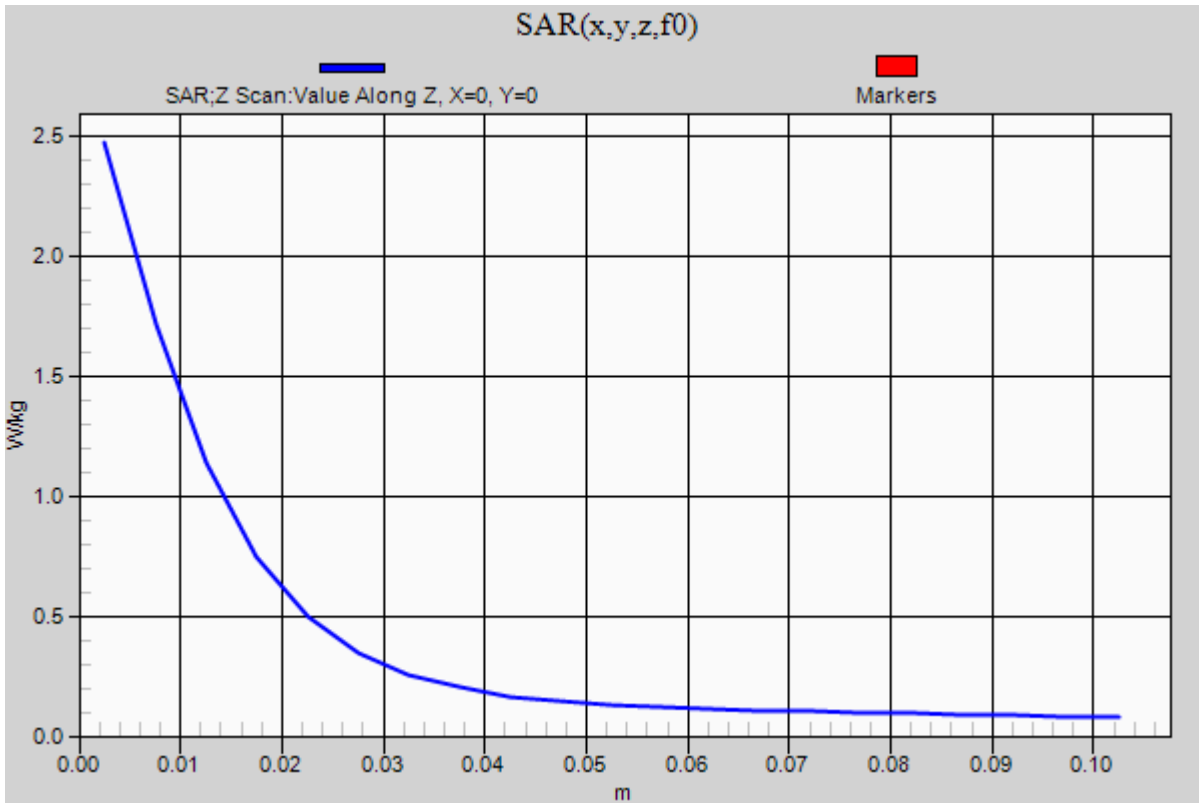


0 dB = 7.73 W/kg = 8.88 dBW/kg

20140825 SystemPerformanceCheck-D2600V2 SN 1006

Frequency: 2600 MHz; Duty Cycle: 1:1

Body/Pin=100 mW/Z Scan (1x1x21): Measurement grid: dx=20mm, dy=20mm, dz=5mm
Maximum value of SAR (measured) = 2.47 W/kg



2014_8_12_SystemPerformanceCheck-D1900V2 SN 5d043

Frequency: 1900 MHz; Duty Cycle: 1:1; Room Ambient Temperature: 24.0°C; Liquid Temperature: 23.0°C
 Medium parameters used: $f = 1900 \text{ MHz}$; $\sigma = 1.5 \text{ S/m}$; $\epsilon_r = 51.902$; $\rho = 1000 \text{ kg/m}^3$

DASY5 Configuration:

- Area Scan Setting: Find Secondary Maximum Within: 2.0 dB and with a peak SAR value greater than 0.0012W/kg
- Averaged Fast SAR: Polynomial fit
- Electronics: DAE4 Sn1380; Calibrated: 7/23/2014
- Probe: EX3DV4 - SN3773; ConvF(6.9, 6.9, 6.9); Calibrated: 4/22/2014;
- Sensor-Surface: 2.5mm (Mechanical Surface Detection)
- Phantom: ELI-B v5.0; Type: QDOVA001BB; Serial: 1215

Body/Pin=100 mW/Area Scan (61x61x1): Interpolated grid: dx=1.500 mm, dy=1.500 mm

Reference Value = 57.42 V/m; Power Drift = 0.01 dB

Fast SAR: SAR(1 g) = 3.66 W/kg; SAR(10 g) = 1.85 W/kg

Maximum value of SAR (interpolated) = 4.88 W/kg

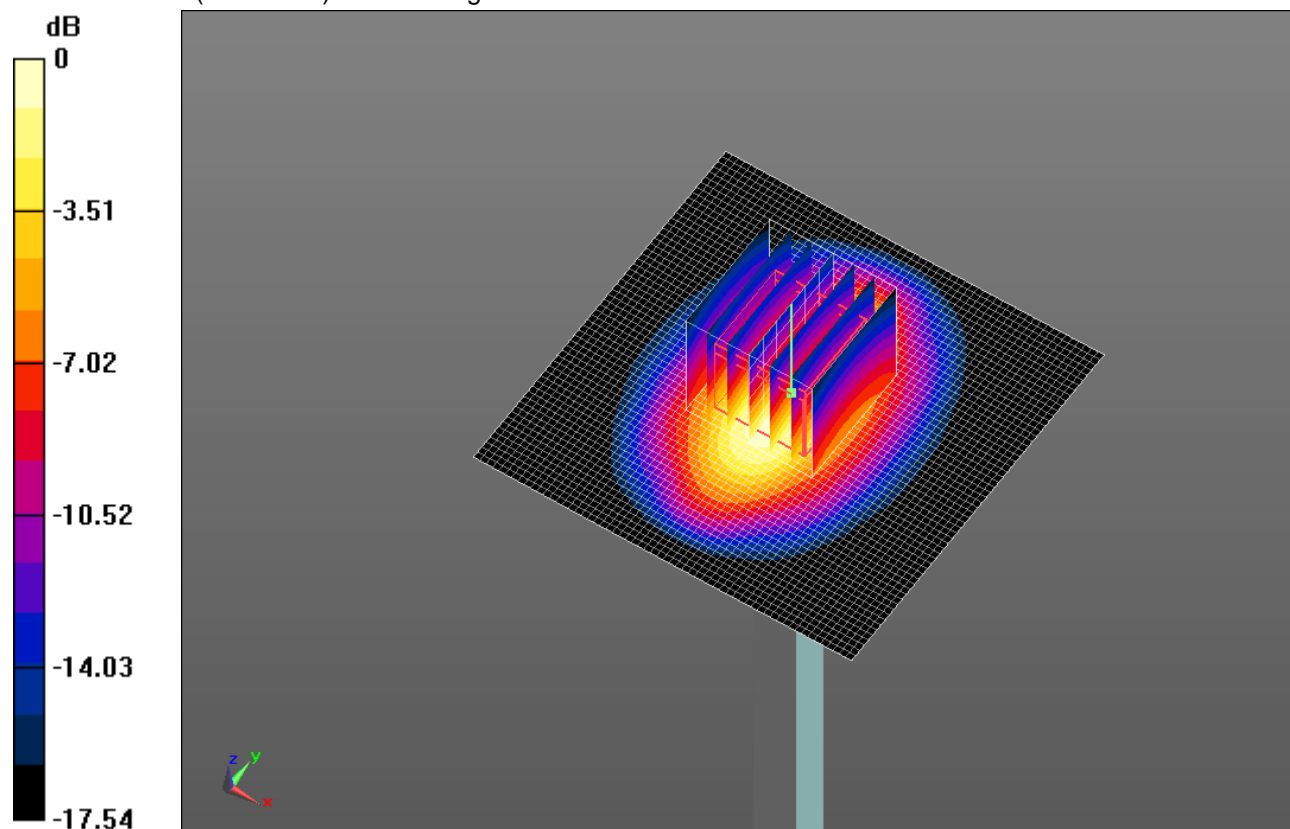
Body/Pin=100 mW/Zoom Scan (7x7x7)/Cube 0: Measurement grid: dx=5mm, dy=5mm, dz=5mm

Reference Value = 57.42 V/m; Power Drift = 0.01 dB

Peak SAR (extrapolated) = 6.63 W/kg

SAR(1 g) = 3.63 W/kg; SAR(10 g) = 1.89 W/kg

Maximum value of SAR (measured) = 4.92 W/kg

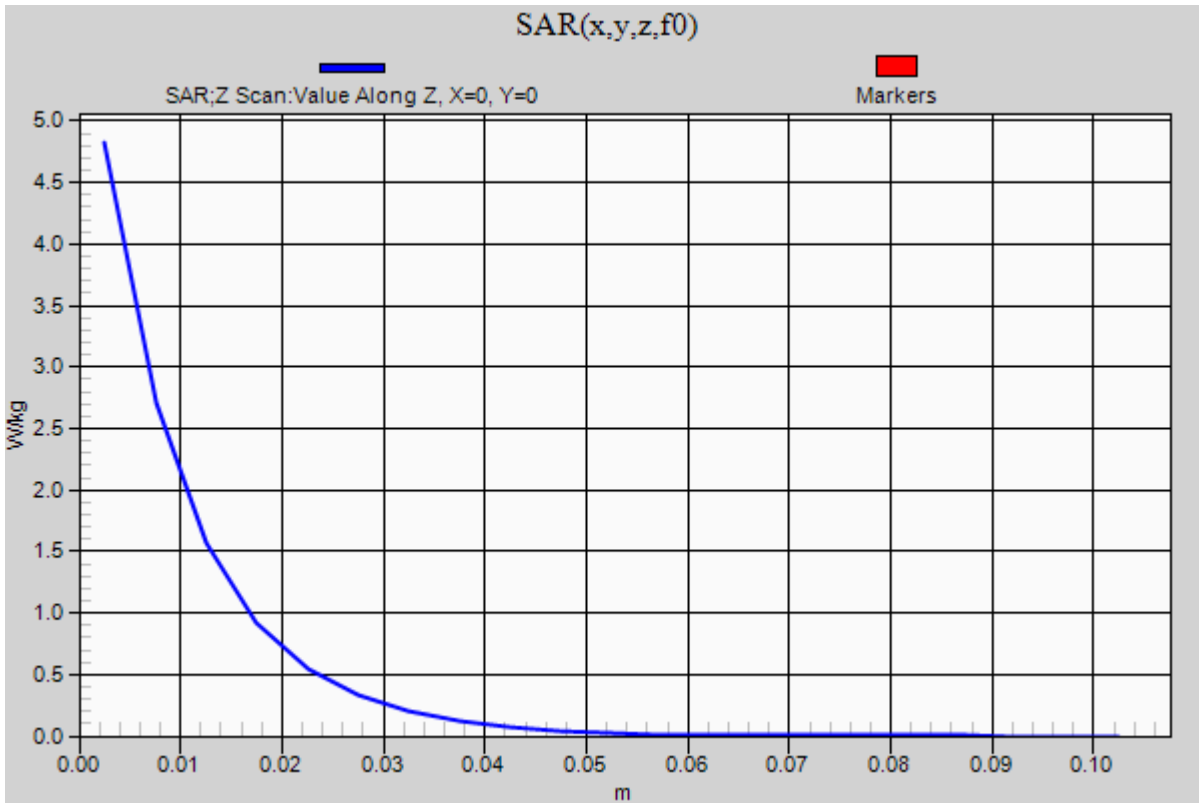


0 dB = 4.92 W/kg = 6.92 dBW/kg

2014_8_12_SystemPerformanceCheck-D1900V2 SN 5d043

Frequency: 1900 MHz; Duty Cycle: 1:1

Body/Pin=100 mW/Z Scan (1x1x21): Measurement grid: dx=20mm, dy=20mm, dz=5mm
Maximum value of SAR (measured) = 4.82 W/kg



20140815_SystemPerformanceCheck-D835V2 SN 4d002

Frequency: 835 MHz; Duty Cycle: 1:1; Room Ambient Temperature: 24.0°C; Liquid Temperature: 23.0°C

Medium parameters used: $f = 835 \text{ MHz}$; $\sigma = 1.016 \text{ S/m}$; $\epsilon_r = 53.567$; $\rho = 1000 \text{ kg/m}^3$

DASY5 Configuration:

- Area Scan Setting: Find Secondary Maximum Within: 2.0 dB and with a peak SAR value greater than 0.0012W/kg
- Averaged Fast SAR: Polynomial fit
- Electronics: DAE4 Sn1380; Calibrated: 7/23/2014
- Probe: EX3DV4 - SN3773; ConvF(8.77, 8.77, 8.77); Calibrated: 4/22/2014;
- Sensor-Surface: 2.5mm (Mechanical Surface Detection (Locations From Previous Scan Used)), Sensor-Surface: 2.5mm (Mechanical Surface Detection)
- Phantom: ELI-B v5.0; Type: QDOVA001BB; Serial: 1215

Body/Pin=100 mW/Area Scan (61x61x1): Interpolated grid: dx=1.500 mm, dy=1.500 mm

Reference Value = 35.18 V/m; Power Drift = 0.03 dB

Fast SAR: SAR(1 g) = 1.04 W/kg; SAR(10 g) = 0.698 W/kg

Maximum value of SAR (interpolated) = 1.24 W/kg

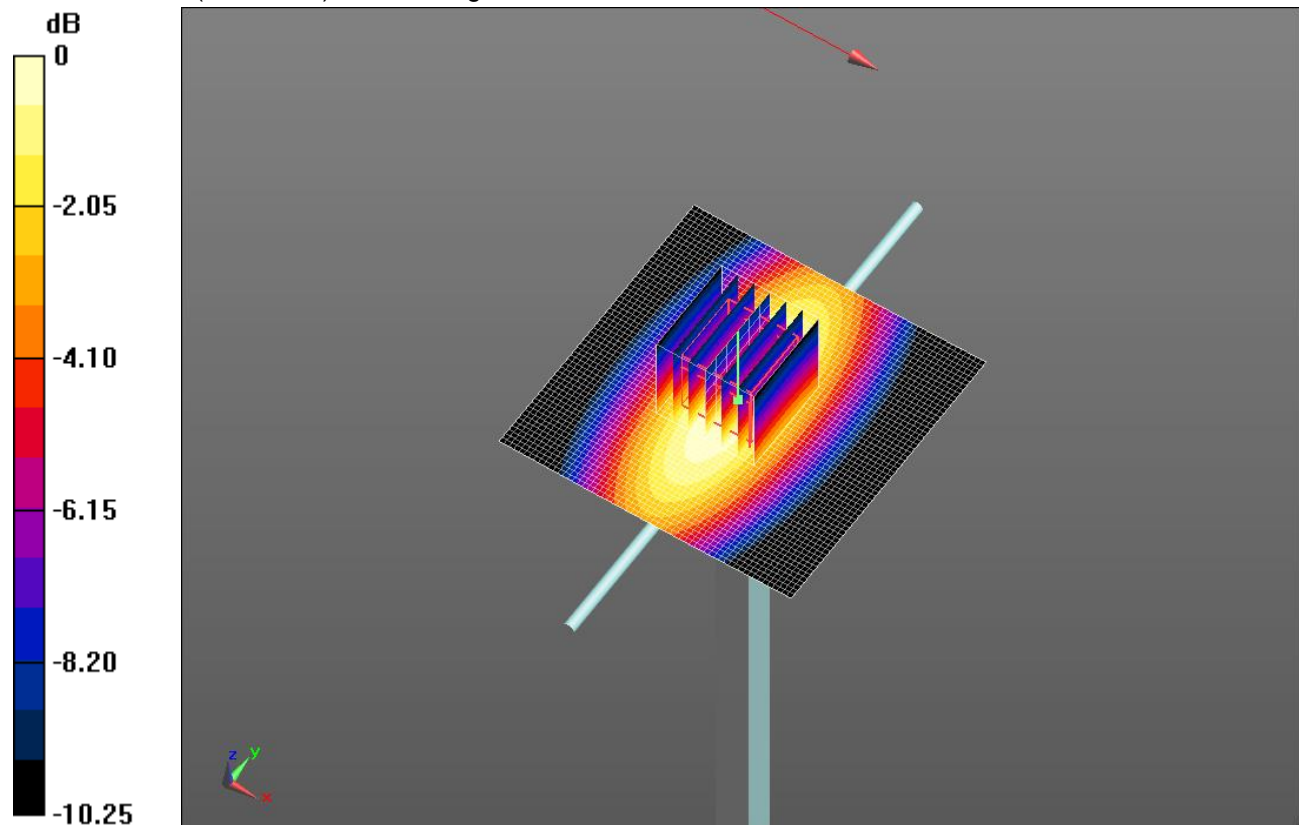
Body/Pin=100 mW/Zoom Scan (7x7x7)/Cube 0: Measurement grid: dx=5mm, dy=5mm, dz=5mm

Reference Value = 35.18 V/m; Power Drift = 0.03 dB

Peak SAR (extrapolated) = 1.51 W/kg

SAR(1 g) = 1.02 W/kg; SAR(10 g) = 0.672 W/kg

Maximum value of SAR (measured) = 1.23 W/kg

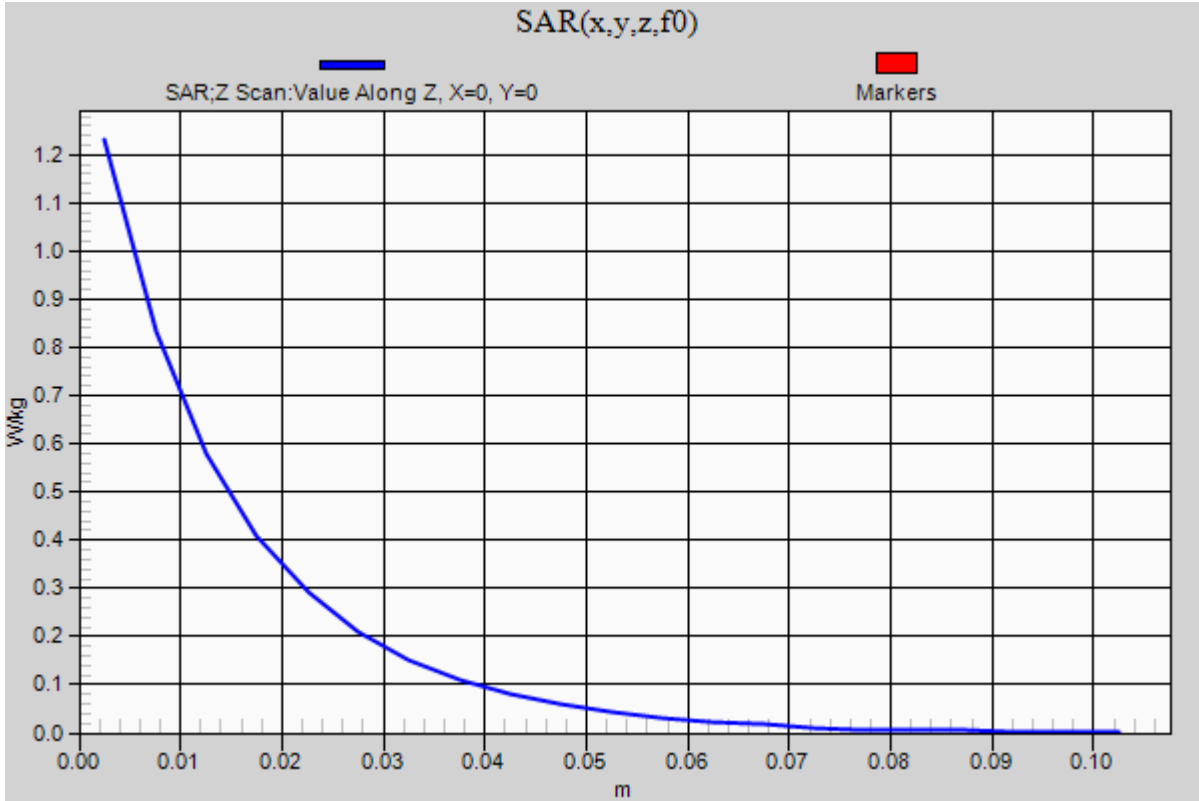


0 dB = 1.23 W/kg = 0.90 dBW/kg

20140815_SystemPerformanceCheck-D835V2 SN 4d002

Frequency: 835 MHz; Duty Cycle: 1:1

Body/Pin=100 mW/Z Scan (1x1x21): Measurement grid: dx=20mm, dy=20mm, dz=5mm
Maximum value of SAR (measured) = 1.23 W/kg



20140819_SystemPerformanceCheck-D2600V2 SN 1006

Frequency: 2600 MHz; Duty Cycle: 1:1; Room Ambient Temperature: 24.0°C; Liquid Temperature: 23.0°C

Medium parameters used: $f = 2600$ MHz; $\sigma = 2.231$ S/m; $\epsilon_r = 50.294$; $\rho = 1000$ kg/m³

DASY5 Configuration:

- Area Scan Setting: Find Secondary Maximum Within: 2.0 dB and with a peak SAR value greater than 0.0012W/kg
- Averaged Fast SAR: Polynomial fit
- Electronics: DAE4 Sn1380; Calibrated: 7/23/2014
- Probe: EX3DV4 - SN3773; ConvF(6.44, 6.44, 6.44); Calibrated: 4/22/2014;
- Sensor-Surface: 2.5mm (Mechanical Surface Detection)
- Phantom: ELI-B v5.0; Type: QDOVA001BB; Serial: 1215

Body/Pin=100 mW/Area Scan (71x71x1): Interpolated grid: dx=1.200 mm, dy=1.200 mm

Reference Value = 60.53 V/m; Power Drift = 0.18 dB

Fast SAR: SAR(1 g) = 6.02 W/kg; SAR(10 g) = 2.62 W/kg

Maximum value of SAR (interpolated) = 8.78 W/kg

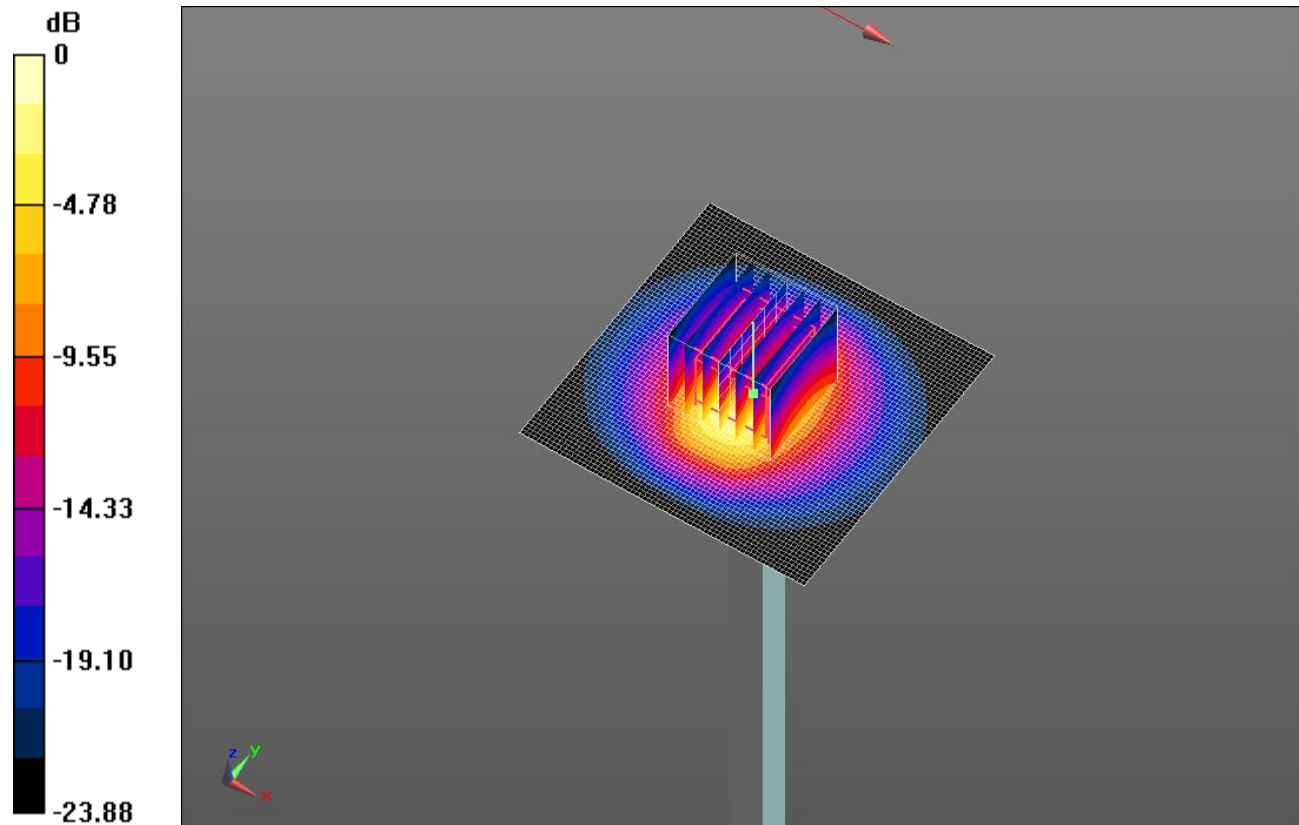
Body/Pin=100 mW/Zoom Scan (7x7x7)/Cube 0: Measurement grid: dx=5mm, dy=5mm, dz=5mm

Reference Value = 60.53 V/m; Power Drift = 0.18 dB

Peak SAR (extrapolated) = 12.8 W/kg

SAR(1 g) = 5.81 W/kg; SAR(10 g) = 2.56 W/kg

Maximum value of SAR (measured) = 8.48 W/kg

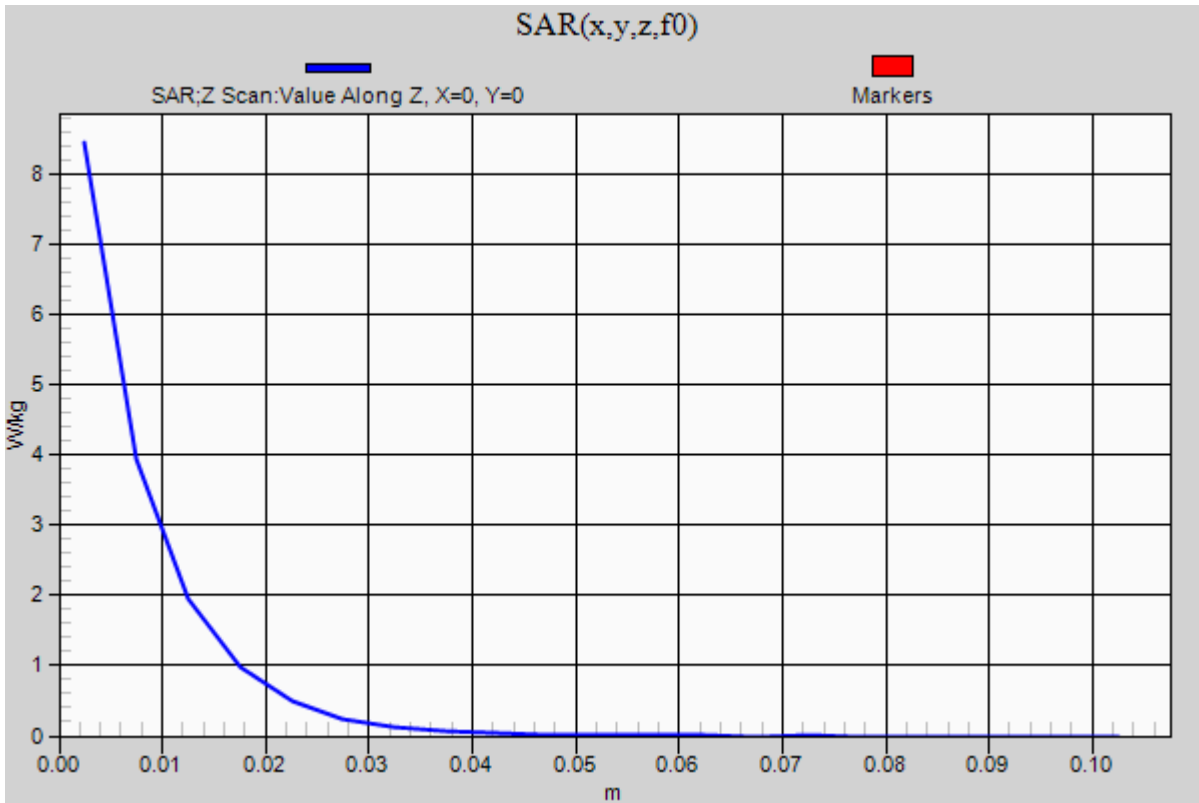


0 dB = 8.48 W/kg = 9.28 dBW/kg

20140819_SystemPerformanceCheck-D2600V2 SN 1006

Frequency: 2600 MHz; Duty Cycle: 1:1

Body/Pin=100 mW/Z Scan (1x1x21): Measurement grid: dx=20mm, dy=20mm, dz=5mm
Maximum value of SAR (measured) = 8.46 W/kg



20140820_SystemPerformanceCheck-D2450V2 SN 899

Frequency: 2450 MHz; Duty Cycle: 1:1; Room Ambient Temperature: 24.0°C; Liquid Temperature: 23.0°C

Medium parameters used: $f = 2450$ MHz; $\sigma = 1.966$ S/m; $\epsilon_r = 51.589$; $\rho = 1000$ kg/m³

DASY5 Configuration:

- Area Scan Setting: Find Secondary Maximum Within: 2.0 dB and with a peak SAR value greater than 0.0012W/kg
- Averaged Fast SAR: Polynomial fit
- Electronics: DAE4 Sn1380; Calibrated: 7/23/2014
- Probe: EX3DV4 - SN3773; ConvF(6.67, 6.67, 6.67); Calibrated: 4/22/2014;
- Sensor-Surface: 2.5mm (Mechanical Surface Detection)
- Phantom: ELI-B v5.0; Type: QDOVA001BB; Serial: 1215

Body/Pin=100 mW/Area Scan (71x71x1): Interpolated grid: dx=1.200 mm, dy=1.200 mm

Reference Value = 62.76 V/m; Power Drift = 0.04 dB

Fast SAR: SAR(1 g) = 5.43 W/kg; SAR(10 g) = 2.34 W/kg

Maximum value of SAR (interpolated) = 7.98 W/kg

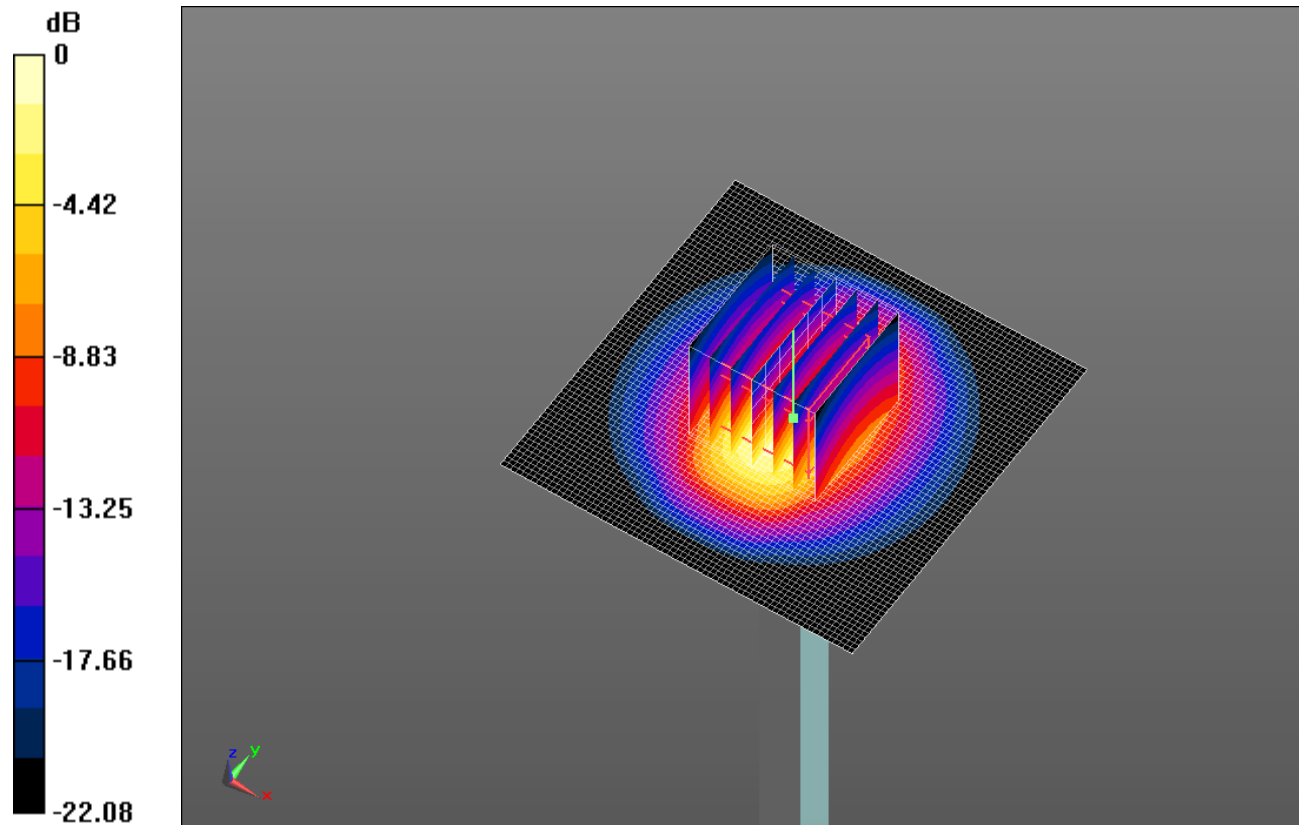
Body/Pin=100 mW/Zoom Scan (7x7x7)/Cube 0: Measurement grid: dx=5mm, dy=5mm, dz=5mm

Reference Value = 62.76 V/m; Power Drift = 0.04 dB

Peak SAR (extrapolated) = 11.2 W/kg

SAR(1 g) = 5.4 W/kg; SAR(10 g) = 2.49 W/kg

Maximum value of SAR (measured) = 7.72 W/kg

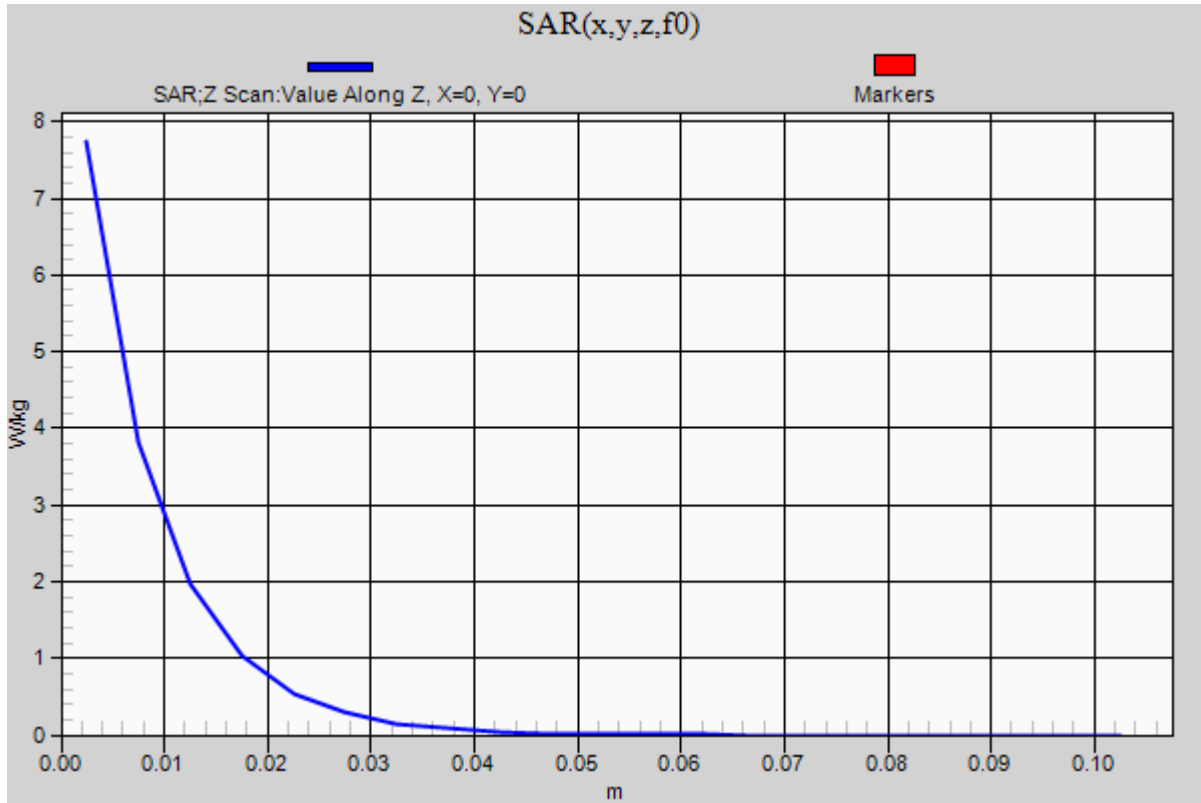


0 dB = 7.72 W/kg = 8.88 dBW/kg

20140820_SystemPerformanceCheck-D2450V2 SN 899

Frequency: 2450 MHz; Duty Cycle: 1:1

Body/Pin=100 mW/Z Scan (1x1x21): Measurement grid: dx=20mm, dy=20mm, dz=5mm
Maximum value of SAR (measured) = 7.74 W/kg



2014_08_13_SystemPerformanceCheck-D5GHzV2 SN 1138

Frequency: 5200 MHz; Duty Cycle: 1:1; Room Ambient Temperature: 24.0°C; Liquid Temperature: 23.0°C

Medium parameters used: $f = 5200$ MHz; $\sigma = 5.457$ S/m; $\epsilon_r = 47.754$; $\rho = 1000$ kg/m³

DASY5 Configuration:

- Area Scan Setting: Find Secondary Maximum Within: 2.0 dB and with a peak SAR value greater than 0.0012W/kg
- Averaged Fast SAR: Polynomial fit
- Electronics: DAE4 Sn1352; Calibrated: 9/11/2013
- Probe: EX3DV4 - SN3929; ConvF(4.19, 4.19, 4.19); Calibrated: 5/9/2014;
- Sensor-Surface: 1.4mm (Mechanical Surface Detection)
- Phantom: ELI A (v5.0); Type: QDOVA001BB; Serial: S/n:1212

Body/5.2 GHz, Pin=100mW/Area Scan (61x61x1): Interpolated grid: dx=1.000 mm, dy=1.000 mm

Reference Value = 53.00 V/m; Power Drift = -0.18 dB

Fast SAR: SAR(1 g) = 7.39 W/kg; SAR(10 g) = 2.04 W/kg

Maximum value of SAR (interpolated) = 19.2 W/kg

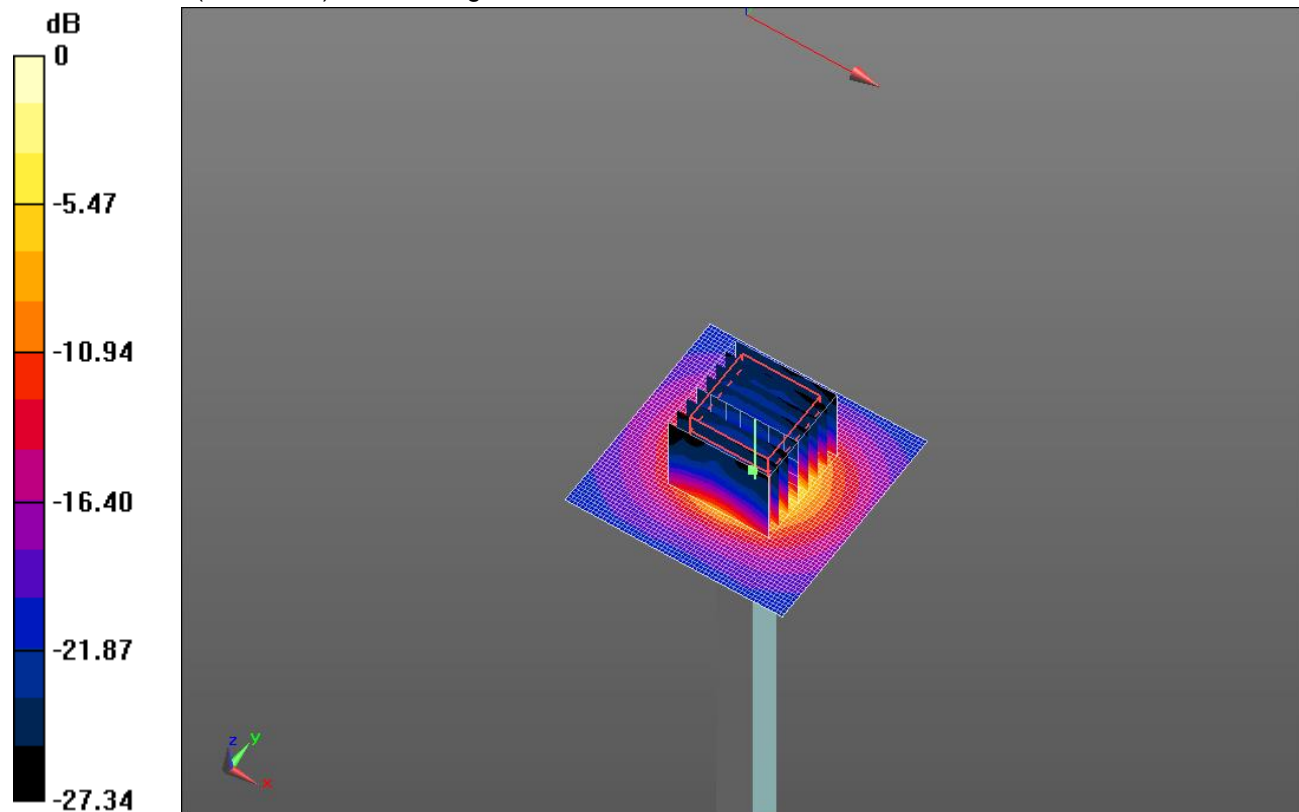
Body/5.2 GHz, Pin=100mW/Zoom Scan (8x8x7)/Cube 0: Measurement grid: dx=4mm, dy=4mm, dz=1.4mm

Reference Value = 53.00 V/m; Power Drift = -0.18 dB

Peak SAR (extrapolated) = 29.6 W/kg

SAR(1 g) = 7.57 W/kg; SAR(10 g) = 2.19 W/kg

Maximum value of SAR (measured) = 17.6 W/kg

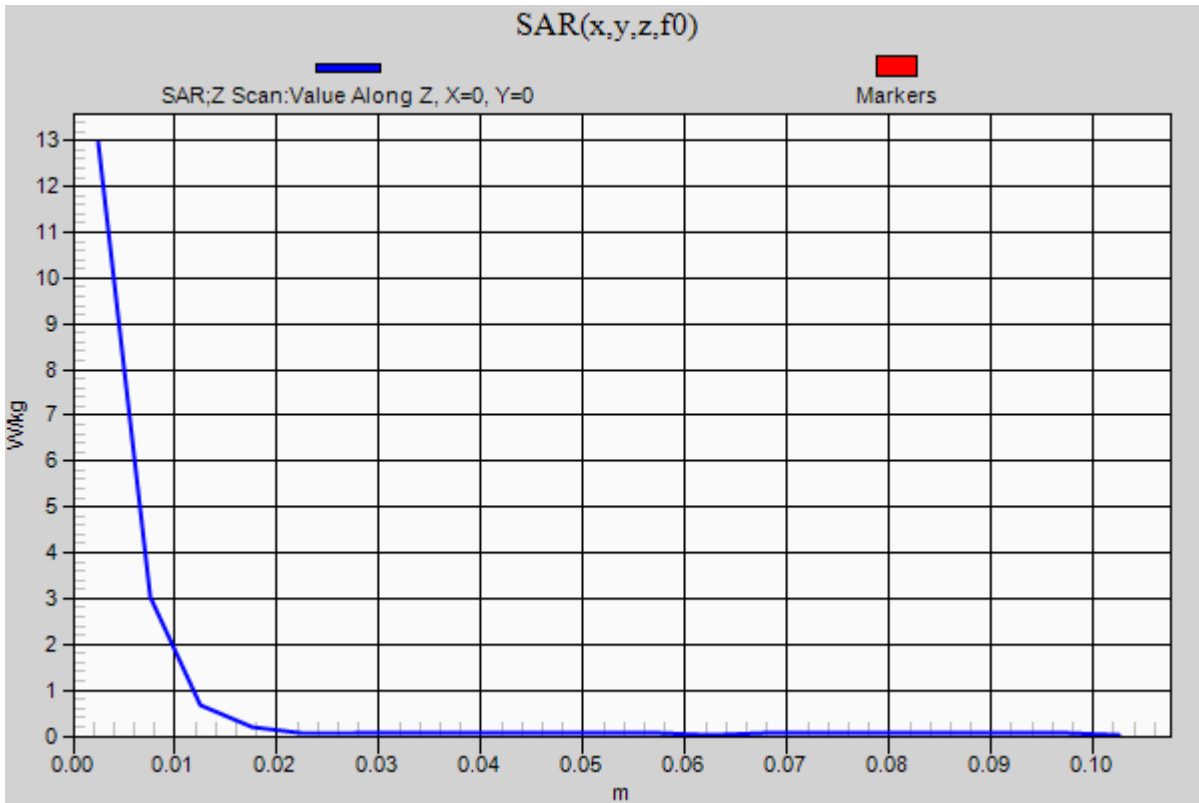


0 dB = 17.6 W/kg = 12.46 dBW/kg

2014_08_13_SystemPerformanceCheck-D5GHzV2 SN 1138

Frequency: 5200 MHz; Duty Cycle: 1:1

Body/5.2 GHz, Pin=100mW/Z Scan (1x1x21): Measurement grid: dx=20mm, dy=20mm, dz=5mm
Maximum value of SAR (measured) = 13.0 W/kg



2014_08_13_SystemPerformanceCheck-D5GHzV2 SN 1138

Frequency: 5600 MHz; Duty Cycle: 1:1; Room Ambient Temperature: 24.0°C; Liquid Temperature: 23.0°C

Medium parameters used: $f = 5600$ MHz; $\sigma = 5.982$ S/m; $\epsilon_r = 47.06$; $\rho = 1000$ kg/m³

DASY5 Configuration:

- Area Scan Setting: Find Secondary Maximum Within: 2.0 dB and with a peak SAR value greater than 0.0012W/kg
- Averaged Fast SAR: Polynomial fit
- Electronics: DAE4 Sn1352; Calibrated: 9/11/2013
- Probe: EX3DV4 - SN3929; ConvF(3.66, 3.66, 3.66); Calibrated: 5/9/2014;
- Sensor-Surface: 1.4mm (Mechanical Surface Detection)
- Phantom: ELI A (v5.0); Type: QDOVA001BB; Serial: S/n:1212

Body/5.6 GHz, Pin=100mW/Area Scan (61x61x1): Interpolated grid: dx=1.000 mm, dy=1.000 mm

Reference Value = 52.99 V/m; Power Drift = -0.17 dB

Fast SAR: SAR(1 g) = 8.06 W/kg; SAR(10 g) = 2.2 W/kg

Maximum value of SAR (interpolated) = 21.9 W/kg

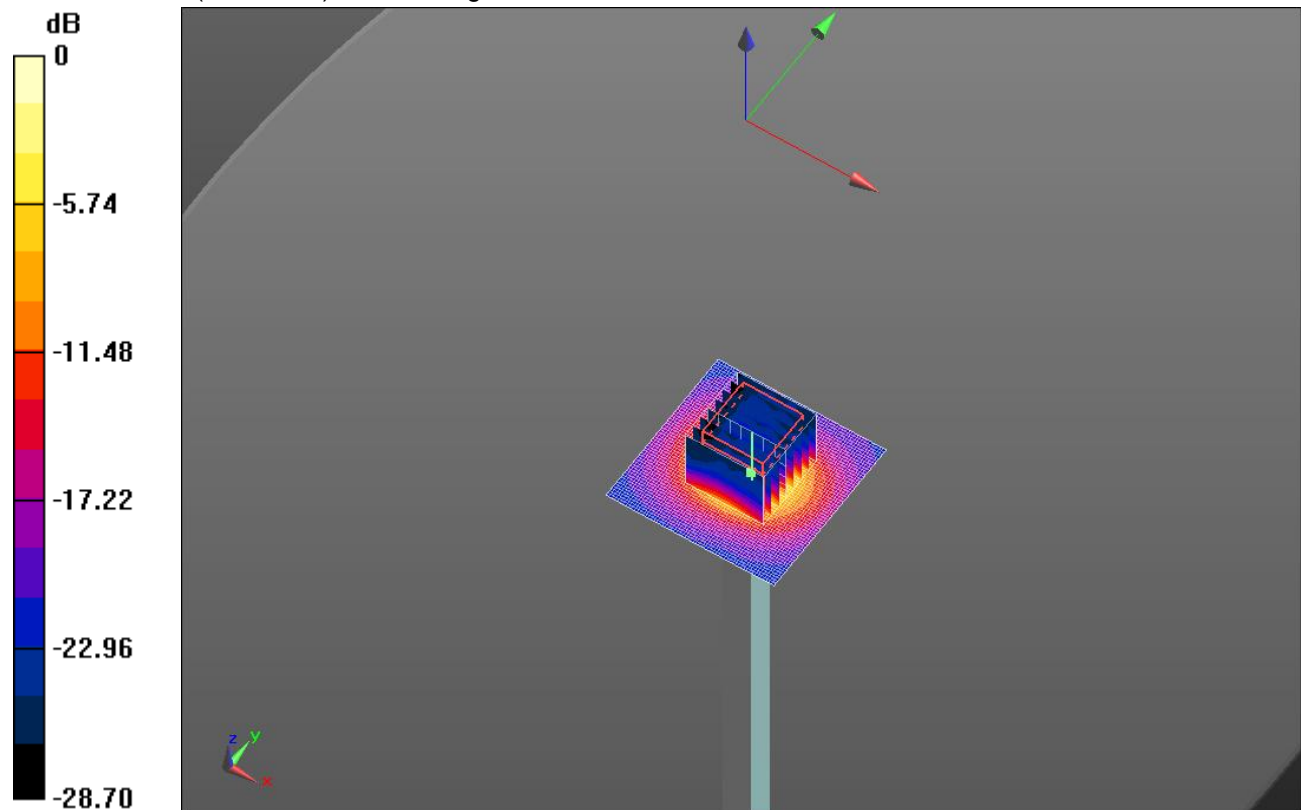
Body/5.6 GHz, Pin=100mW/Zoom Scan (8x8x7)/Cube 0: Measurement grid: dx=4mm, dy=4mm, dz=1.4mm

Reference Value = 52.99 V/m; Power Drift = -0.17 dB

Peak SAR (extrapolated) = 36.0 W/kg

SAR(1 g) = 8.18 W/kg; SAR(10 g) = 2.34 W/kg

Maximum value of SAR (measured) = 19.8 W/kg

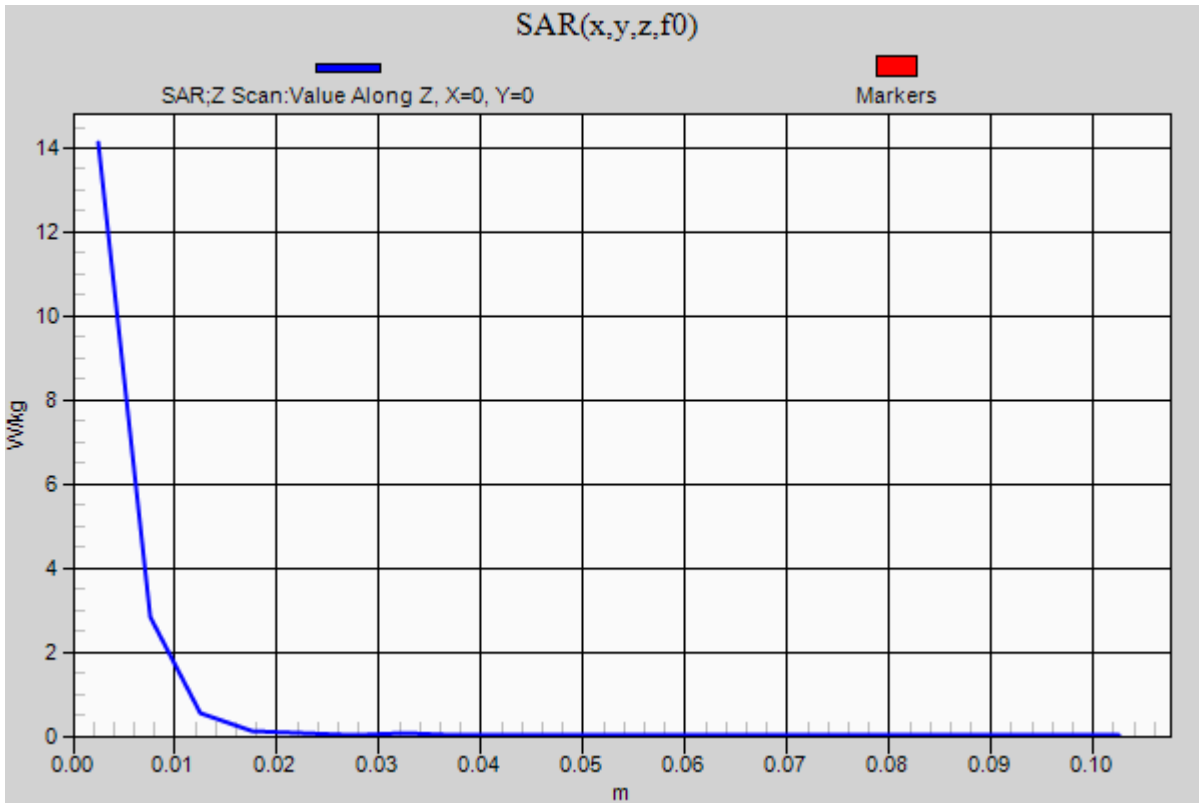


0 dB = 19.8 W/kg = 12.97 dBW/kg

2014_08_13_SystemPerformanceCheck-D5GHzV2 SN 1138

Frequency: 5600 MHz; Duty Cycle: 1:1

Body/5.6 GHz, Pin=100mW/Z Scan (1x1x21): Measurement grid: dx=20mm, dy=20mm, dz=5mm
Maximum value of SAR (measured) = 14.1 W/kg



2014_08_20_SystemPerformanceCheck-D5GHzV2 SN 1168

Frequency: 5200 MHz; Duty Cycle: 1:1; Room Ambient Temperature: 24.0°C; Liquid Temperature: 23.0°C

Medium parameters used: $f = 5200$ MHz; $\sigma = 5.292$ S/m; $\epsilon_r = 47.768$; $\rho = 1000$ kg/m³

DASY5 Configuration:

- Area Scan Setting: Find Secondary Maximum Within: 2.0 dB and with a peak SAR value greater than 0.0012W/kg
- Averaged Fast SAR: Polynomial fit
- Electronics: DAE4 Sn1352; Calibrated: 9/11/2013
- Probe: EX3DV4 - SN3929; ConvF(4.19, 4.19, 4.19); Calibrated: 5/9/2014;
- Sensor-Surface: 1.4mm (Mechanical Surface Detection)
- Phantom: ELI A (v5.0); Type: QDOVA001BB; Serial: S/n:1212

Body/5.2 GHz, Pin=100mW/Area Scan (61x61x1): Interpolated grid: dx=1.000 mm, dy=1.000 mm

Reference Value = 54.74 V/m; Power Drift = -0.17 dB

Fast SAR: SAR(1 g) = 7.48 W/kg; SAR(10 g) = 2.05 W/kg

Maximum value of SAR (interpolated) = 19.7 W/kg

Body/5.2 GHz, Pin=100mW/Zoom Scan (8x8x7)/Cube 0: Measurement grid: dx=4mm, dy=4mm,

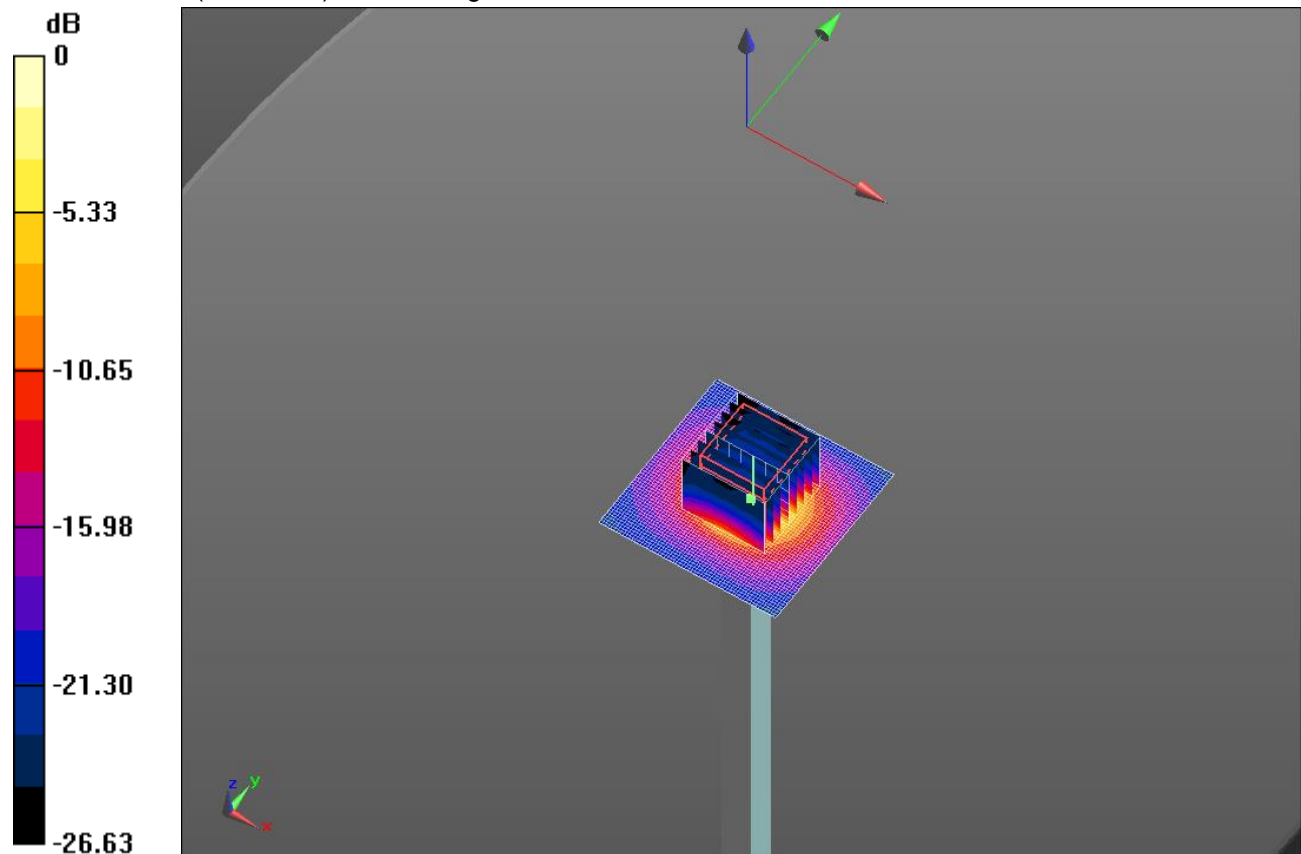
dz=1.4mm

Reference Value = 54.74 V/m; Power Drift = -0.17 dB

Peak SAR (extrapolated) = 29.3 W/kg

SAR(1 g) = 7.6 W/kg; SAR(10 g) = 2.18 W/kg

Maximum value of SAR (measured) = 17.9 W/kg

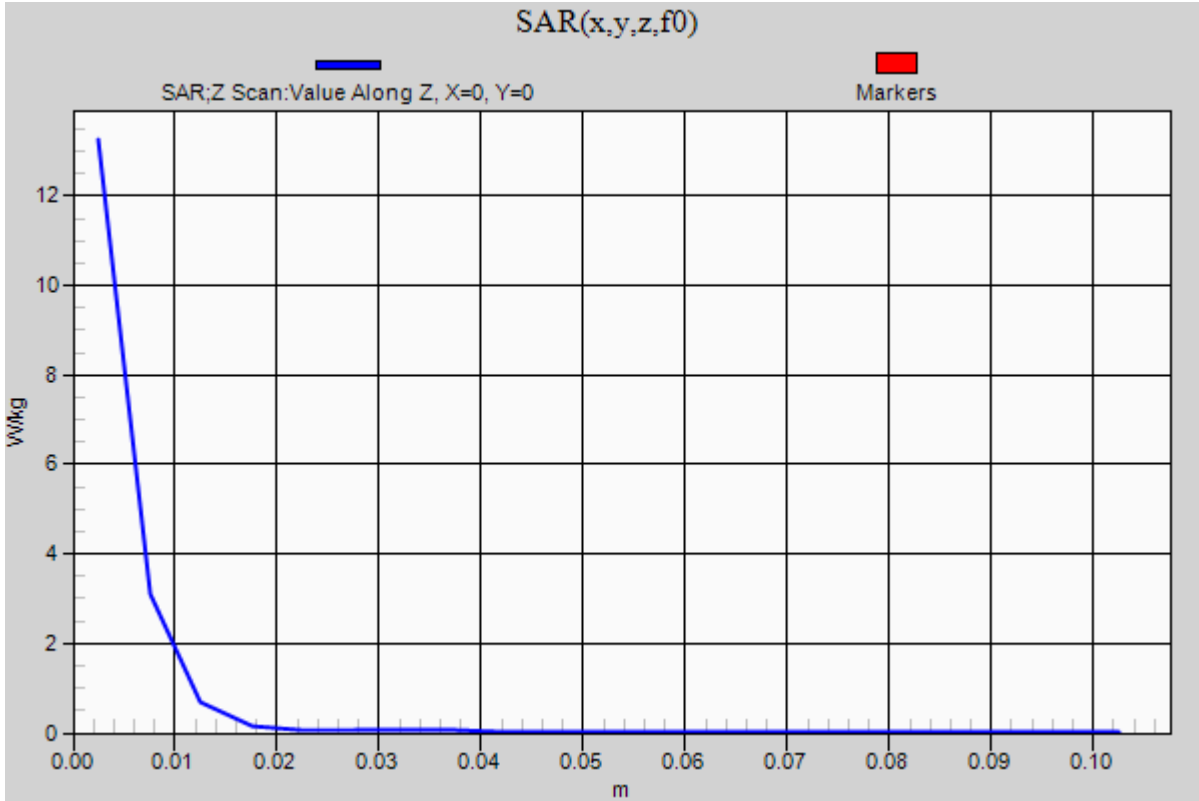


0 dB = 17.9 W/kg = 12.53 dBW/kg

2014_08_20_SystemPerformanceCheck-D5GHzV2 SN 1168

Frequency: 5200 MHz; Duty Cycle: 1:1

Body/5.2 GHz, Pin=100mW/Z Scan (1x1x21): Measurement grid: dx=20mm, dy=20mm, dz=5mm
Maximum value of SAR (measured) = 13.3 W/kg



2014_08_20_SystemPerformanceCheck-D5GHzV2 SN 1168

Frequency: 5600 MHz; Duty Cycle: 1:1; Room Ambient Temperature: 24.0°C; Liquid Temperature: 23.0°C

Medium parameters used: $f = 5600$ MHz; $\sigma = 5.845$ S/m; $\epsilon_r = 47.141$; $\rho = 1000$ kg/m³

DASY5 Configuration:

- Area Scan Setting: Find Secondary Maximum Within: 2.0 dB and with a peak SAR value greater than 0.0012W/kg
- Averaged Fast SAR: Polynomial fit
- Electronics: DAE4 Sn1352; Calibrated: 9/11/2013
- Probe: EX3DV4 - SN3929; ConvF(3.66, 3.66, 3.66); Calibrated: 5/9/2014;
- Sensor-Surface: 1.4mm (Mechanical Surface Detection)
- Phantom: ELI A (v5.0); Type: QDOVA001BB; Serial: S/n:1212

Body/5.6 GHz, Pin=100mW/Area Scan (61x61x1): Interpolated grid: dx=1.000 mm, dy=1.000 mm

Reference Value = 52.23 V/m; Power Drift = -0.12 dB

Fast SAR: SAR(1 g) = 7.7 W/kg; SAR(10 g) = 2.12 W/kg

Maximum value of SAR (interpolated) = 20.8 W/kg

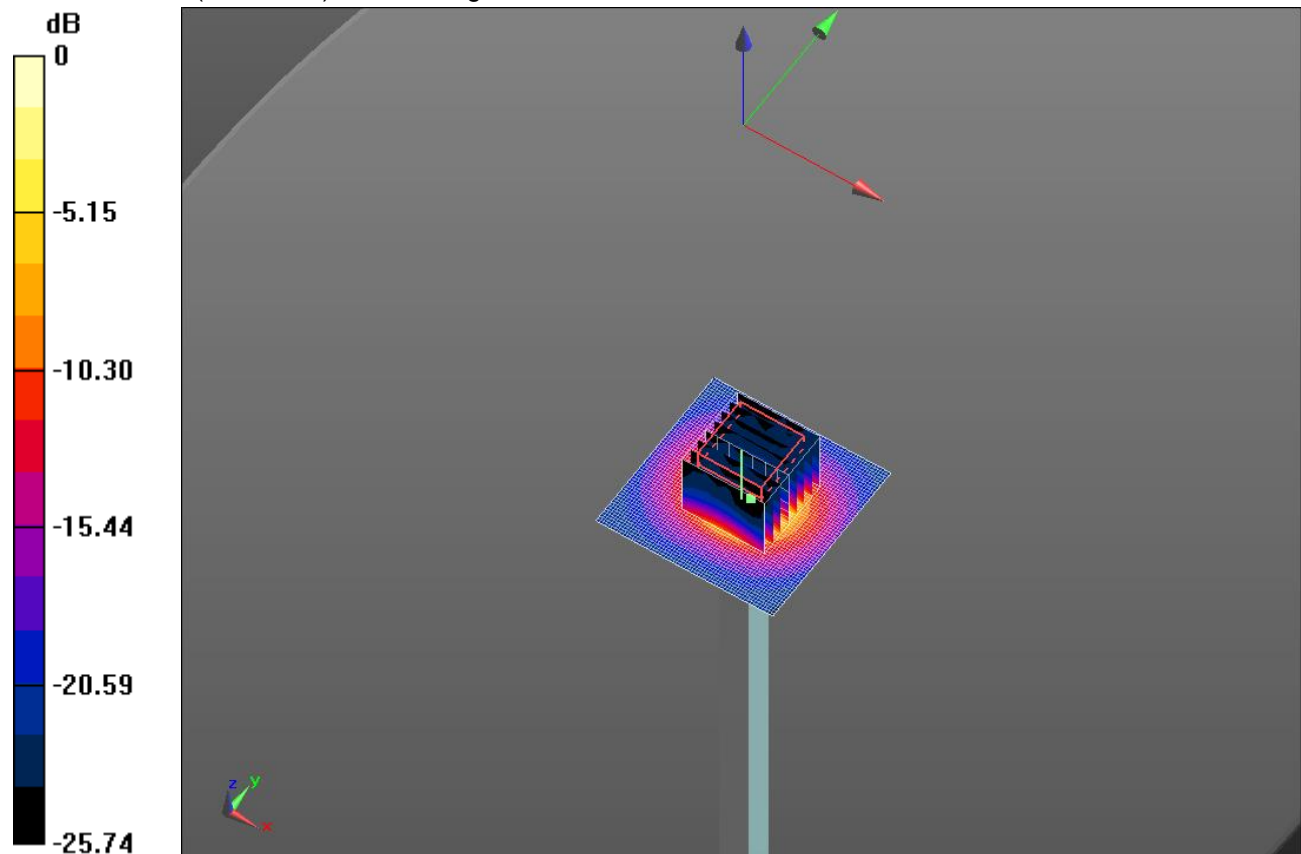
Body/5.6 GHz, Pin=100mW/Zoom Scan (8x8x7)/Cube 0: Measurement grid: dx=4mm, dy=4mm, dz=1.4mm

Reference Value = 52.23 V/m; Power Drift = -0.12 dB

Peak SAR (extrapolated) = 35.9 W/kg

SAR(1 g) = 8.16 W/kg; SAR(10 g) = 2.35 W/kg

Maximum value of SAR (measured) = 19.3 W/kg

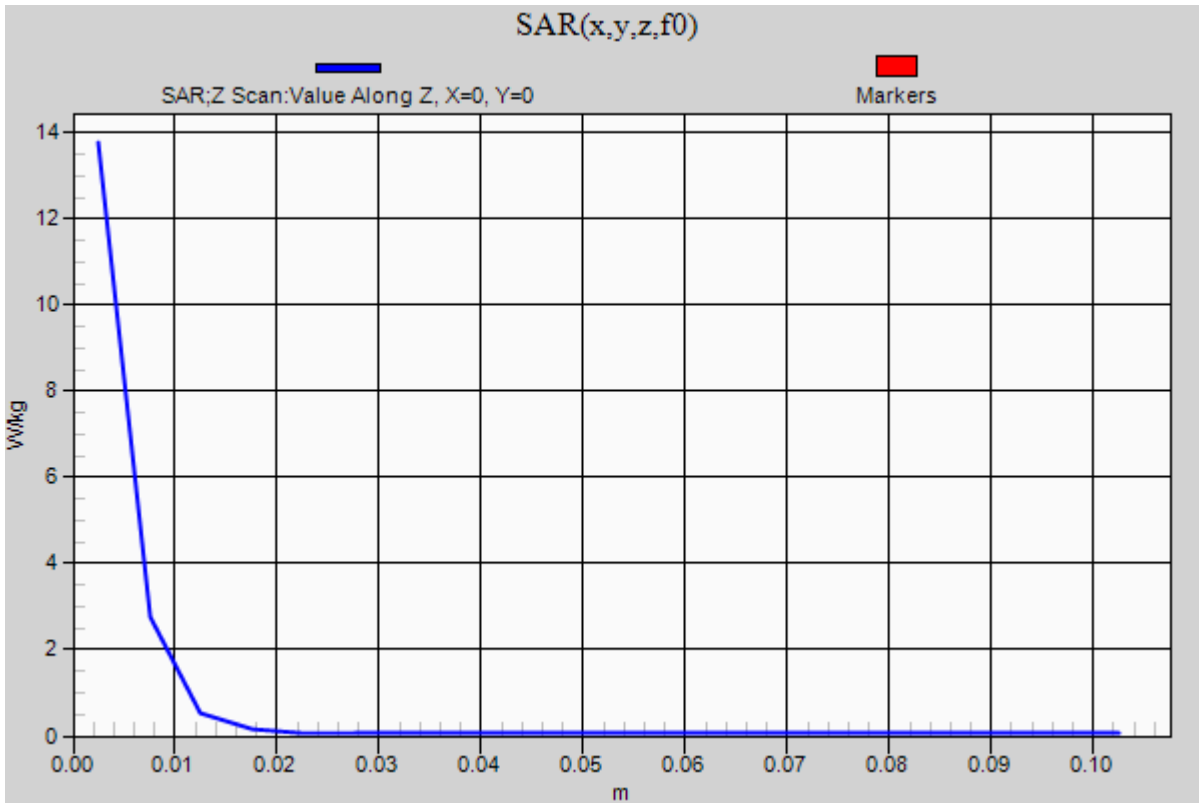


0 dB = 19.3 W/kg = 12.86 dBW/kg

2014_08_20_SystemPerformanceCheck-D5GHzV2 SN 1168

Frequency: 5600 MHz; Duty Cycle: 1:1

Body/5.6 GHz, Pin=100mW/Z Scan (1x1x21): Measurement grid: dx=20mm, dy=20mm, dz=5mm
Maximum value of SAR (measured) = 13.8 W/kg



2014_08_20_SystemPerformanceCheck-D5GHzV2 SN 1168

Frequency: 5800 MHz; Duty Cycle: 1:1; Room Ambient Temperature: 24.0°C; Liquid Temperature: 23.0°C

Medium parameters used: $f = 5800$ MHz; $\sigma = 6.13$ S/m; $\epsilon_r = 46.96$; $\rho = 1000$ kg/m³

DASY5 Configuration:

- Area Scan Setting: Find Secondary Maximum Within: 2.0 dB and with a peak SAR value greater than 0.0012W/kg
- Averaged Fast SAR: Polynomial fit
- Electronics: DAE4 Sn1352; Calibrated: 9/11/2013
- Probe: EX3DV4 - SN3929; ConvF(3.9, 3.9, 3.9); Calibrated: 5/9/2014;
- Sensor-Surface: 1.4mm (Mechanical Surface Detection)
- Phantom: ELI A (v5.0); Type: QDOVA001BB; Serial: S/n:1212

Body/5.8 GHz, Pin=100mW/Area Scan (61x61x1): Interpolated grid: dx=1.000 mm, dy=1.000 mm

Reference Value = 48.52 V/m; Power Drift = -0.07 dB

Fast SAR: SAR(1 g) = 7.16 W/kg; SAR(10 g) = 1.97 W/kg

Maximum value of SAR (interpolated) = 19.8 W/kg

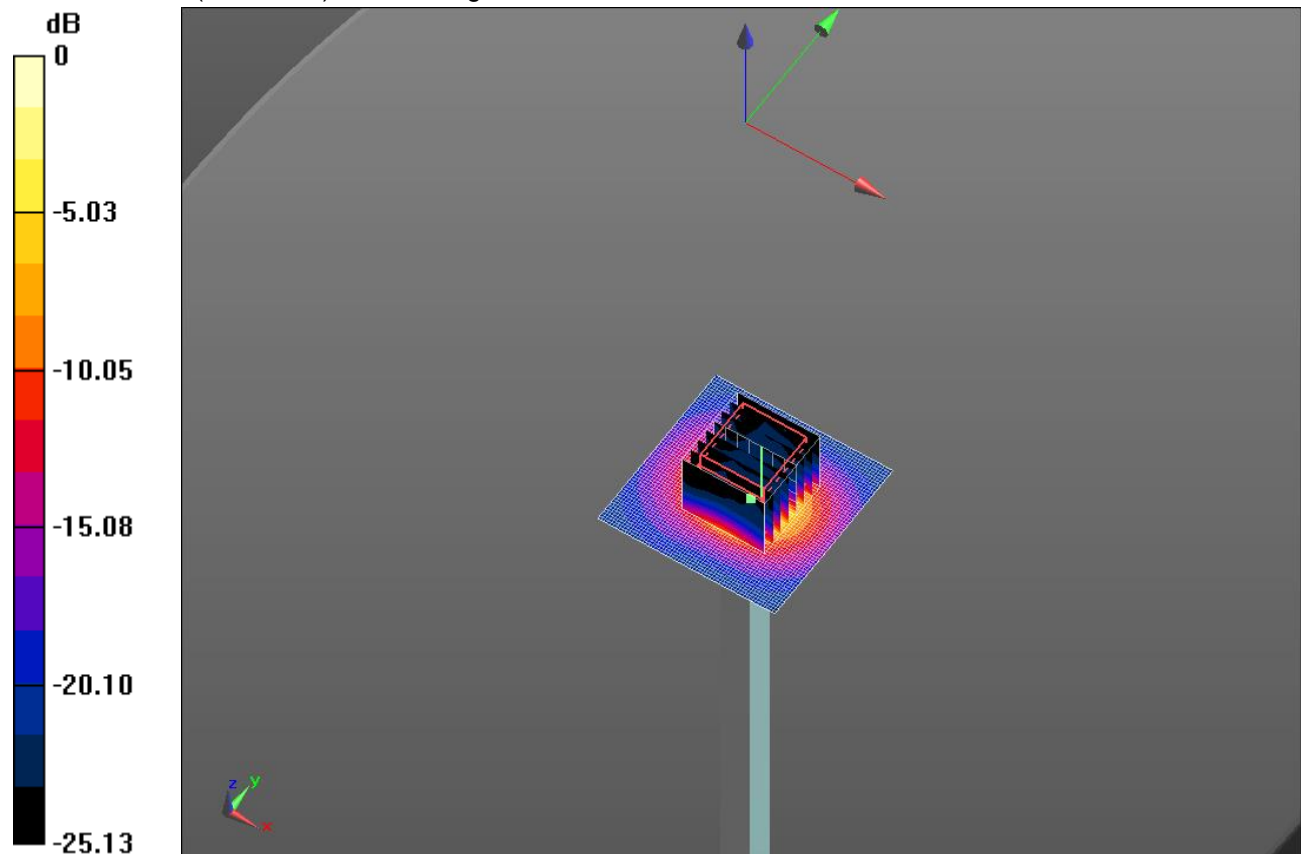
Body/5.8 GHz, Pin=100mW/Zoom Scan (8x8x7)/Cube 0: Measurement grid: dx=4mm, dy=4mm, dz=1.4mm

Reference Value = 48.52 V/m; Power Drift = -0.07 dB

Peak SAR (extrapolated) = 36.0 W/kg

SAR(1 g) = 7.64 W/kg; SAR(10 g) = 2.19 W/kg

Maximum value of SAR (measured) = 18.6 W/kg

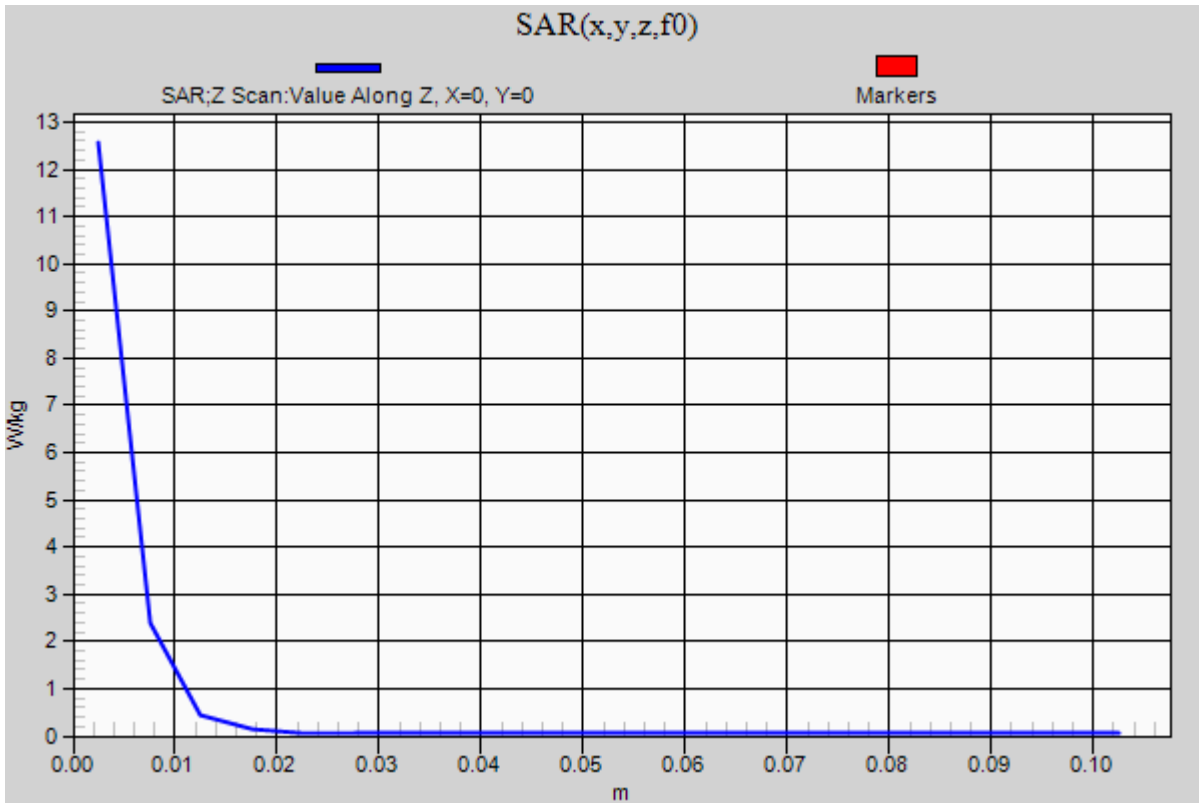


0 dB = 18.6 W/kg = 12.70 dBW/kg

2014_08_20_SystemPerformanceCheck-D5GHzV2 SN 1168

Frequency: 5800 MHz; Duty Cycle: 1:1

Body/5.8 GHz, Pin=100mW/Z Scan (1x1x21): Measurement grid: dx=20mm, dy=20mm, dz=5mm
Maximum value of SAR (measured) = 12.6 W/kg



2014_08_25_SystemPerformanceCheck-D5GHzV2 SN 1138

Frequency: 5800 MHz; Duty Cycle: 1:1; Room Ambient Temperature: 24.0°C; Liquid Temperature: 23.0°C
 Medium parameters used: $f = 5800 \text{ MHz}$; $\sigma = 6.148 \text{ S/m}$; $\epsilon_r = 46.476$; $\rho = 1000 \text{ kg/m}^3$
 DASY5 Configuration:

- Area Scan Setting: Find Secondary Maximum Within: 2.0 dB and with a peak SAR value greater than 0.0012W/kg
- Averaged Fast SAR: Polynomial fit
- Electronics: DAE4 Sn1352; Calibrated: 9/11/2013
- Probe: EX3DV4 - SN3929; ConvF(3.9, 3.9, 3.9); Calibrated: 5/9/2014;
- Sensor-Surface: 1.4mm (Mechanical Surface Detection)
- Phantom: ELI A (v5.0); Type: QDOVA001BB; Serial: S/n:1212

Body/5.8 GHz, Pin=100mW/Area Scan (61x61x1): Interpolated grid: dx=1.000 mm, dy=1.000 mm

Reference Value = 49.11 V/m; Power Drift = -0.01 dB

Fast SAR: SAR(1 g) = 7.1 W/kg; SAR(10 g) = 1.93 W/kg

Maximum value of SAR (interpolated) = 19.7 W/kg

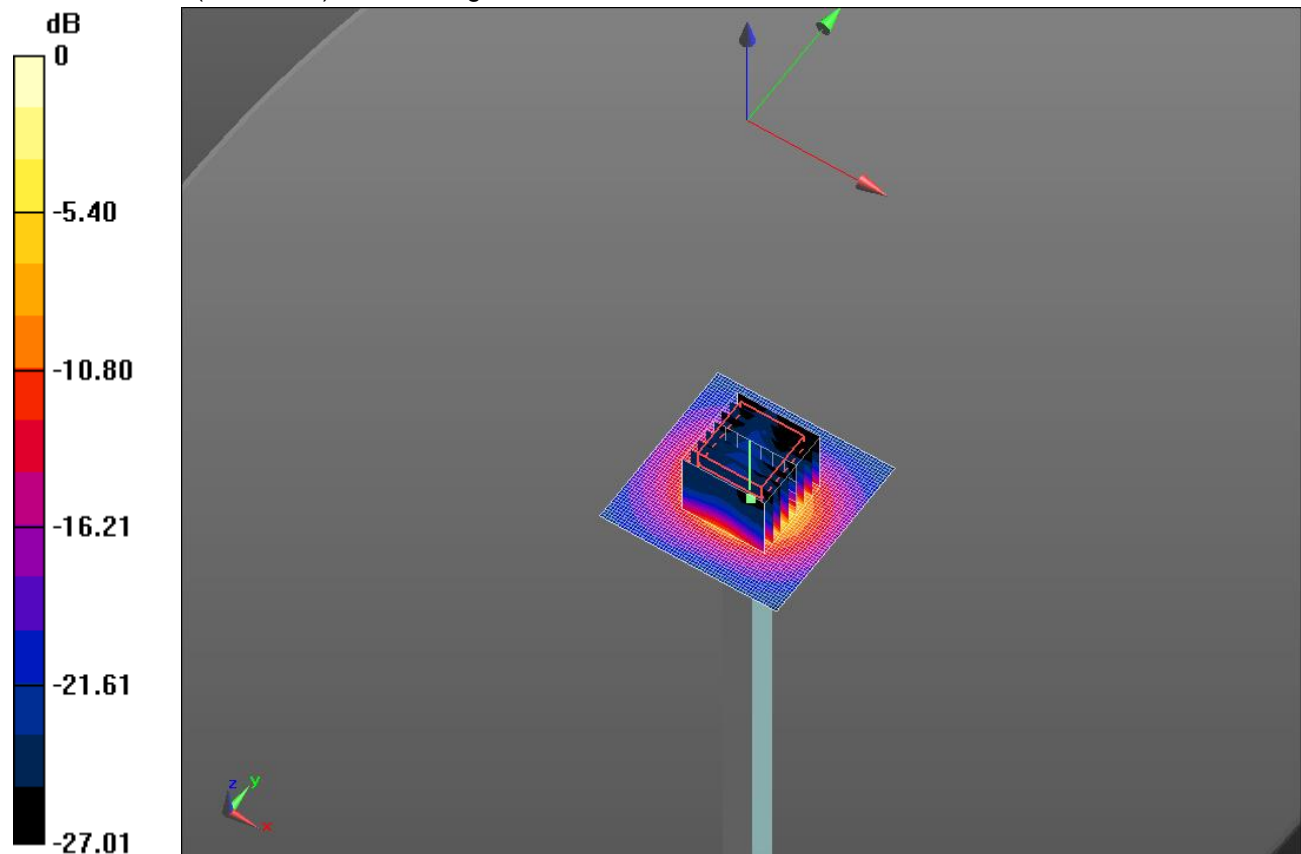
Body/5.8 GHz, Pin=100mW/Zoom Scan (8x8x7)/Cube 0: Measurement grid: dx=4mm, dy=4mm, dz=1.4mm

Reference Value = 49.11 V/m; Power Drift = -0.01 dB

Peak SAR (extrapolated) = 34.7 W/kg

SAR(1 g) = 7.6 W/kg; SAR(10 g) = 2.17 W/kg

Maximum value of SAR (measured) = 18.4 W/kg



0 dB = 18.4 W/kg = 12.65 dBW/kg

2014_08_25_SystemPerformanceCheck-D5GHzV2 SN 1138

Frequency: 5800 MHz; Duty Cycle: 1:1

Body/5.8 GHz, Pin=100mW/Z Scan (1x1x21): Measurement grid: dx=20mm, dy=20mm, dz=5mm
Maximum value of SAR (measured) = 12.9 W/kg

