

**APPENDIX 4. PHOTOGRAPHS**

This appendix contains the following photographs:

Photo Reference Number	Title
001	Test configuration for the measurement of Specific Absorption Rate (SAR)
002	Touch Left
003	Tilt Left
004	Touch Right
005	Tilt Right
006	Front of EUT Facing Phantom at 10mm
007	Front of EUT Facing Phantom at 15mm
008	Back of EUT Facing Phantom at 10mm
009	Back of EUT Facing Phantom at 15mm
010	Left Hand Side of EUT Facing Phantom
011	Right Hand Side of EUT Facing Phantom
012	Top of EUT Facing Phantom
013	Bottom of EUT Facing Phantom
014	Front View of EUT
015	Rear View of EUT
016	Left Hand Side View of EUT
017	Right Hand Side View of EUT
018	Top View of EUT
019	Bottom View of EUT
020	Internal View of Conducted Sample
021	Dummy Battery View
022	850/900 MHz Head Fluid Level
023	850/900 MHz Body Fluid Level
024	1900 MHz Head Fluid Level
025	1900 MHz Body Fluid Level
026	2450 MHz Head Fluid Level
027	2450 MHz Body Fluid Level
028	5.0 GHz Head Fluid Level
029	5.0 GHz Body Fluid Level

**001: Test configuration for the measurement of Specific Absorption Rate (SAR)**



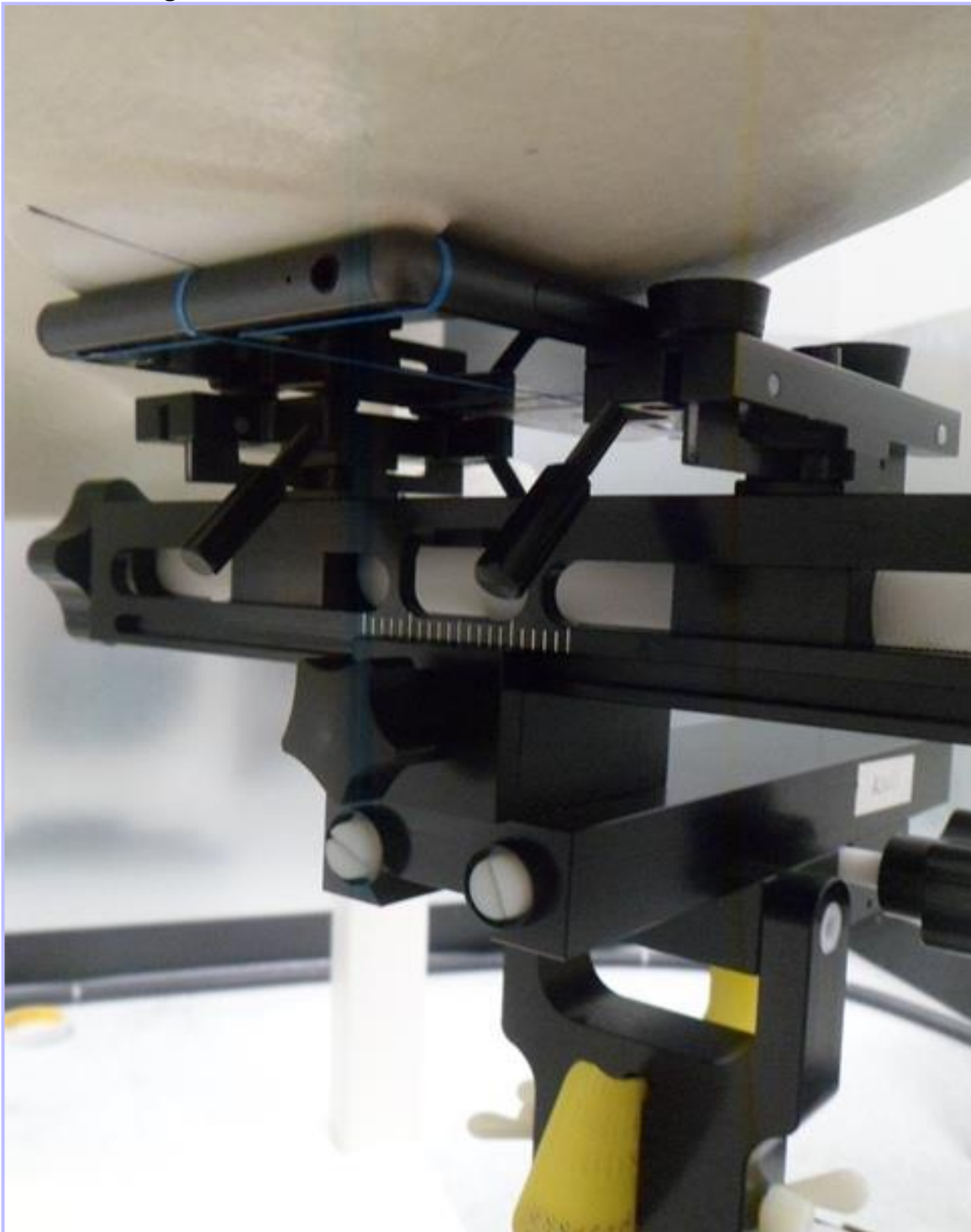
**002: Touch Left**



**003: Tilt Left**



**004: Touch Right**

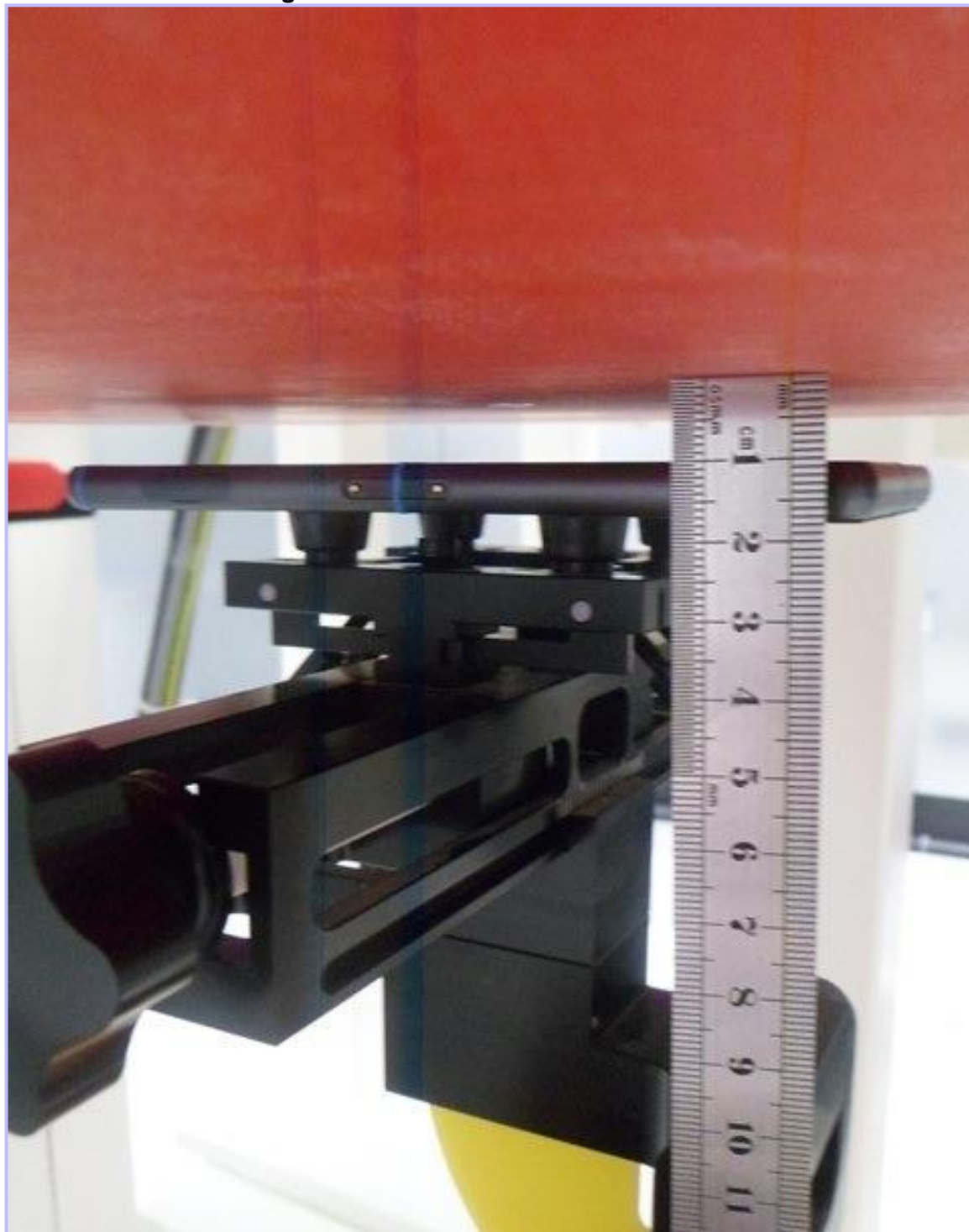




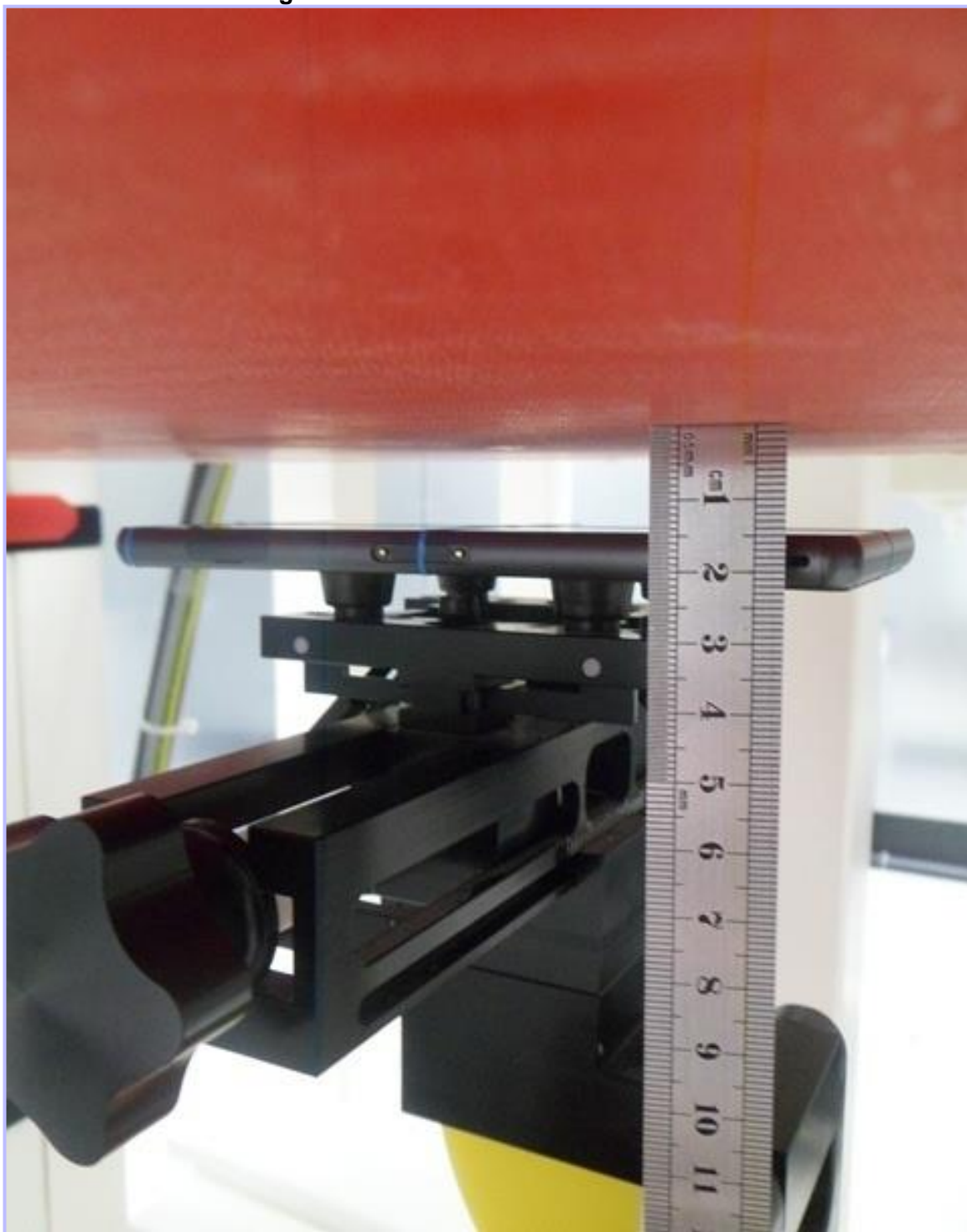
**005: Tilt Right**



**006: Front of EUT Facing Phantom at 10mm**

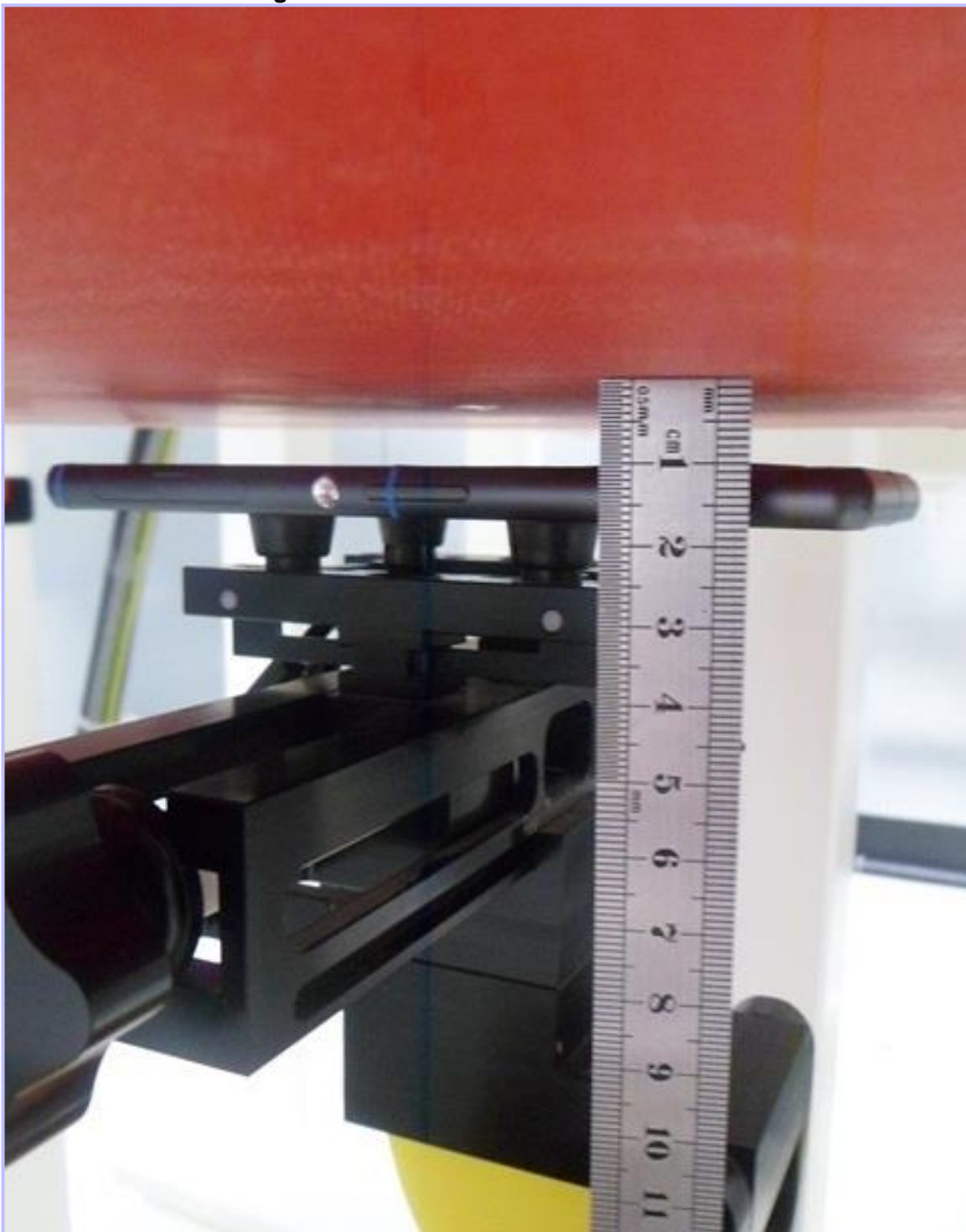


**007: Front of EUT Facing Phantom at 15mm**

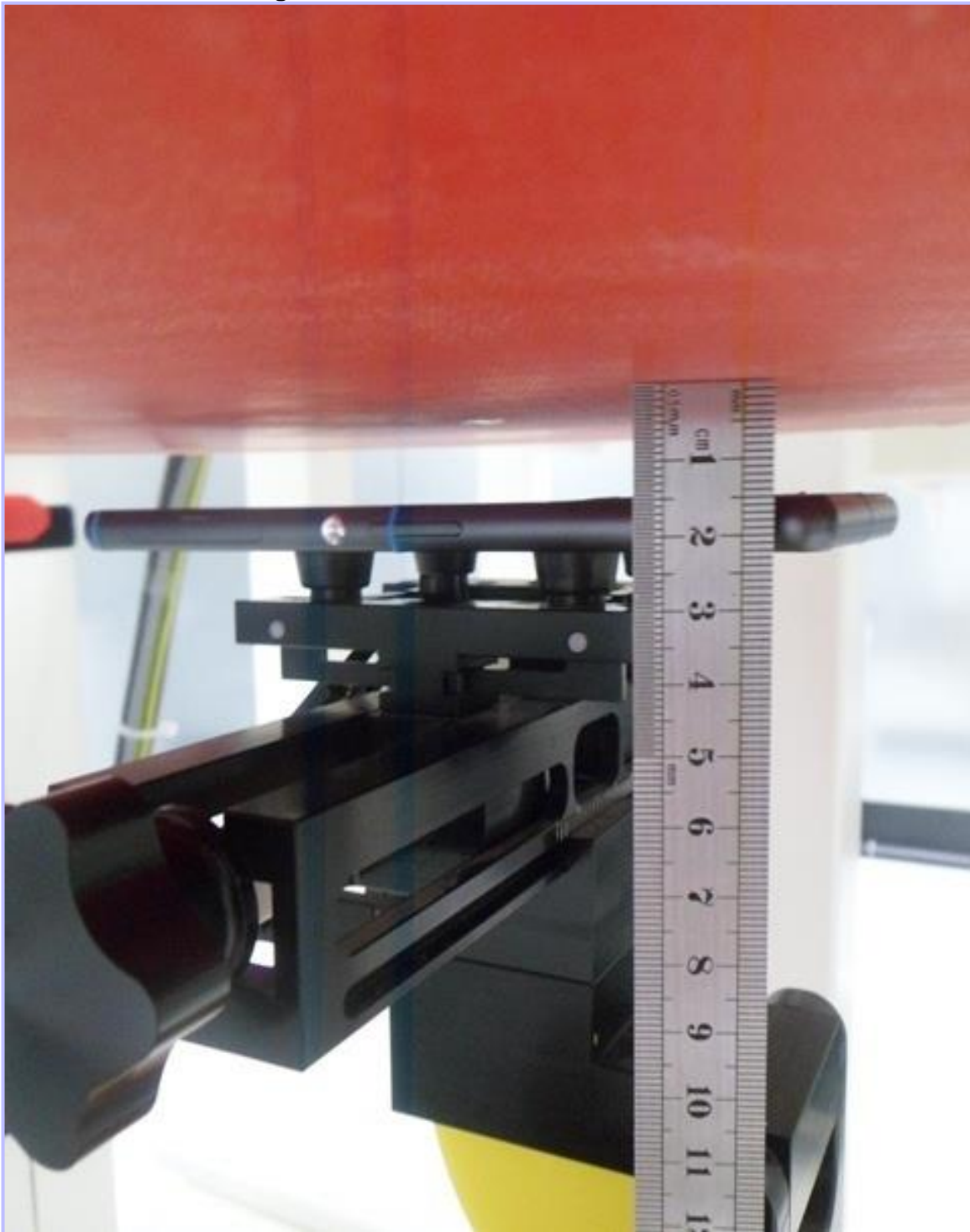




**008: Back of EUT Facing Phantom at 10mm**



**009: Back of EUT Facing Phantom at 15mm**



**010: Left Hand Side of EUT Facing Phantom**

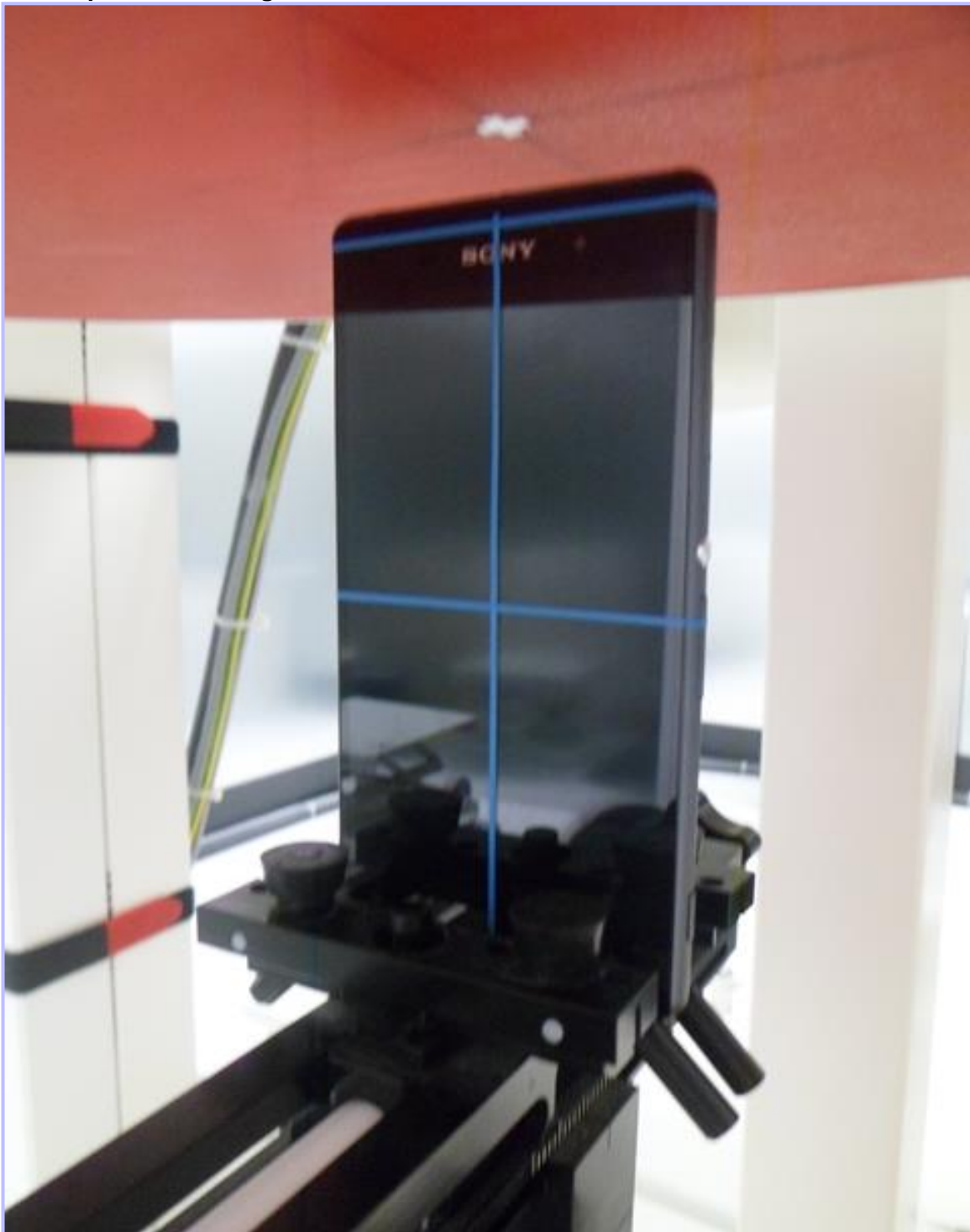


**011: Right Hand Side of EUT Facing Phantom**

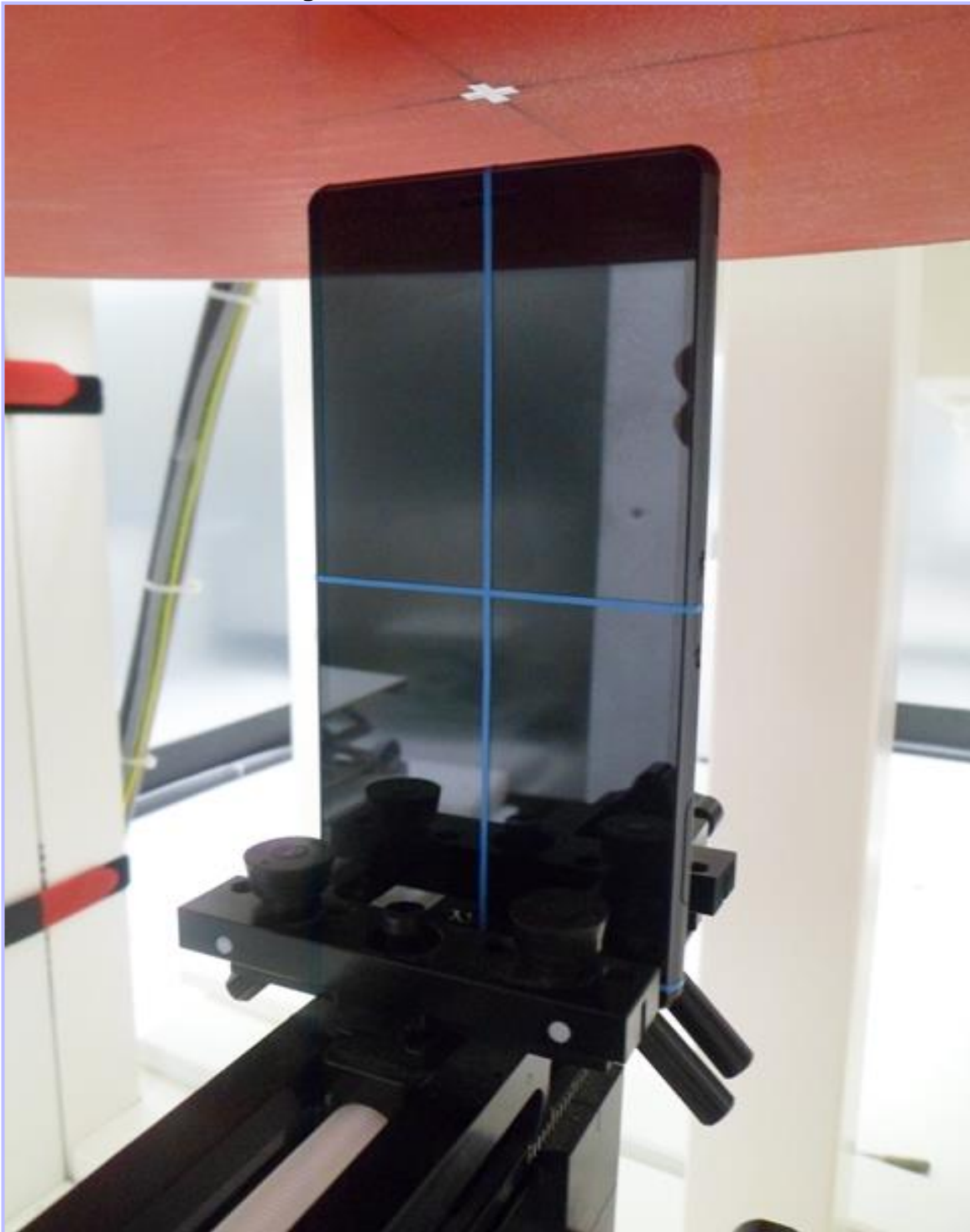




**012: Top of EUT Facing Phantom**



**013: Bottom of EUT Facing Phantom**



**014: Front View of EUT**



015: Rear View of EUT





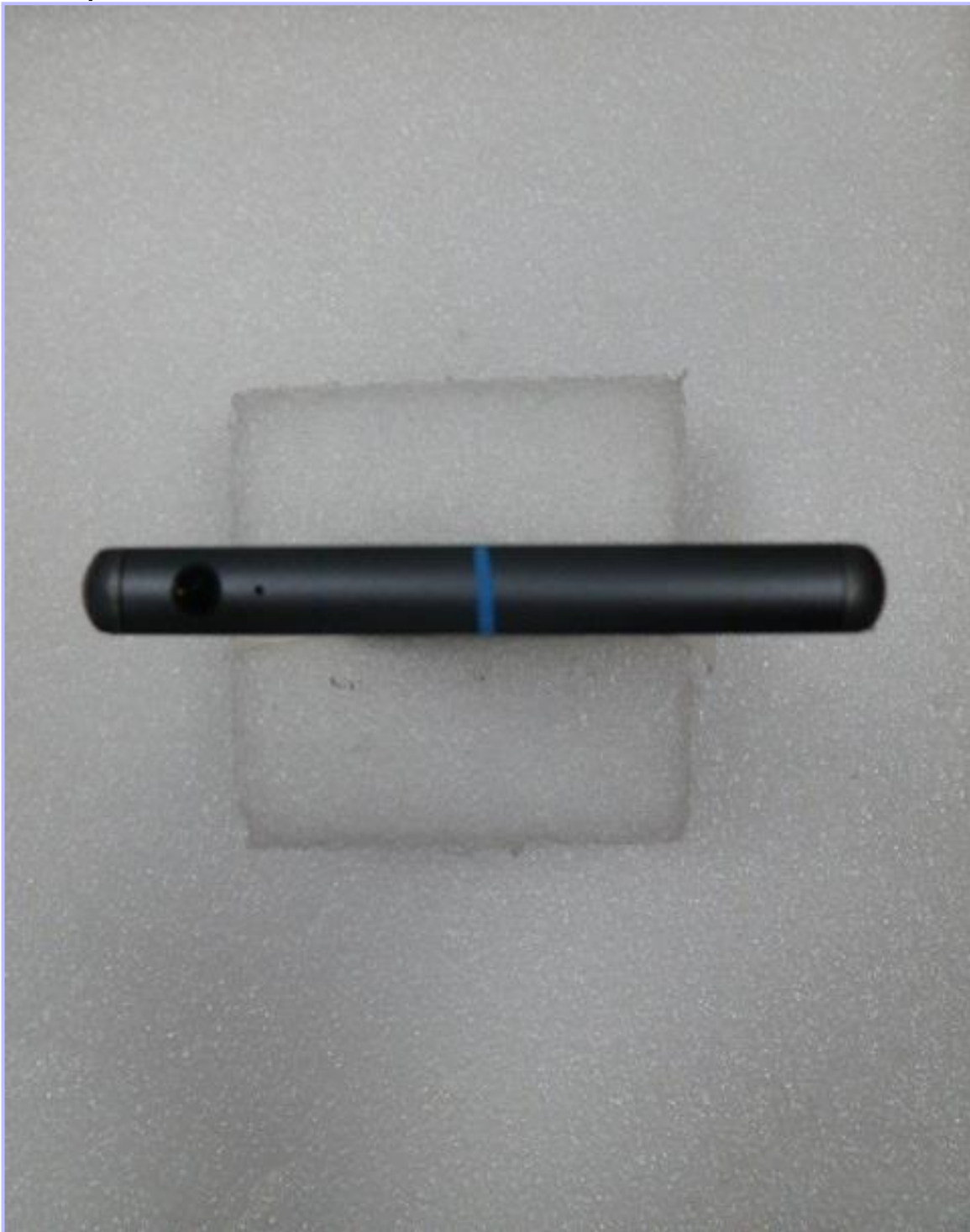
**016: Left Hand Side View of EUT**



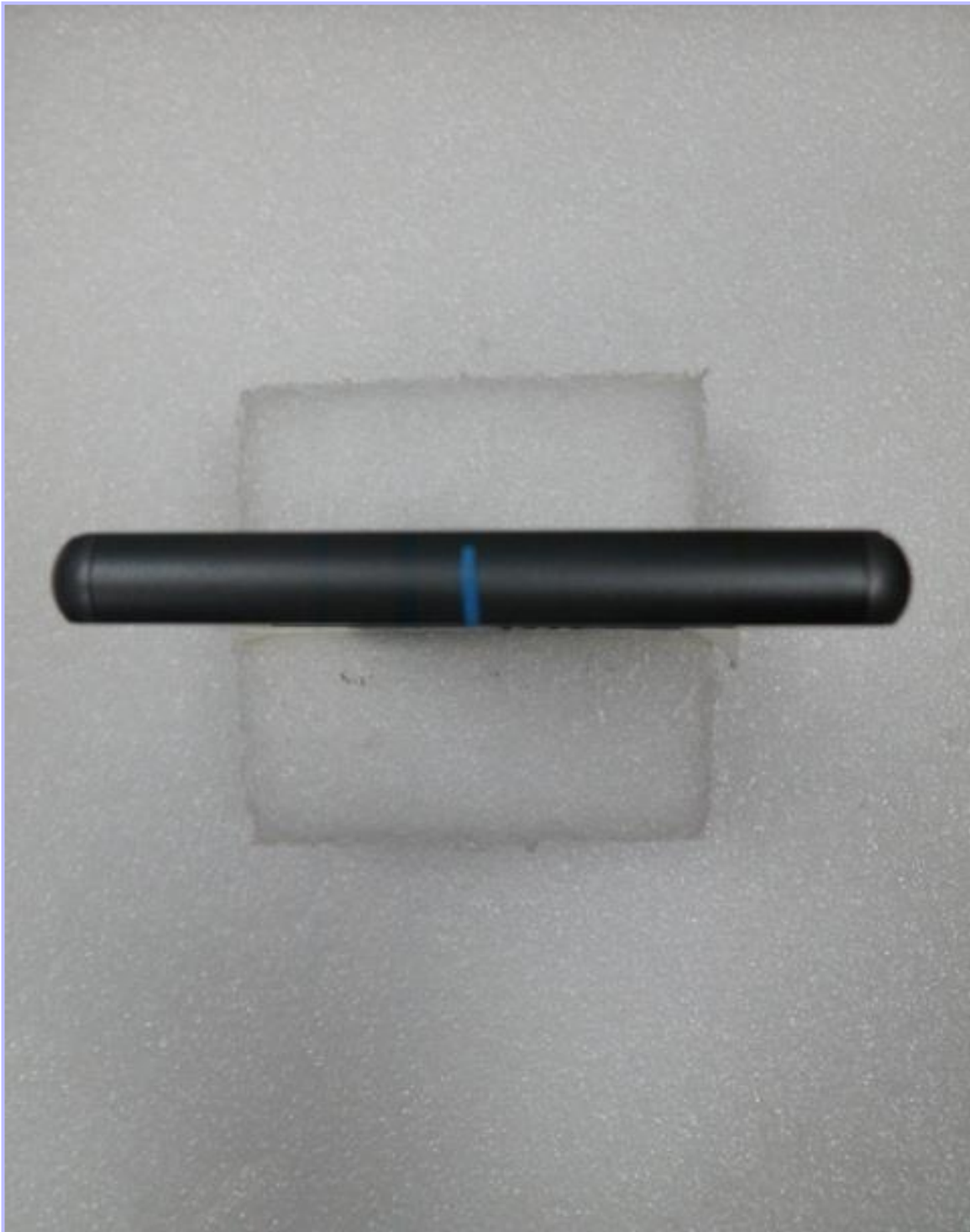
**017: Right Hand Side View of EUT**



**018: Top View of EUT**



**019: Bottom View of EUT**

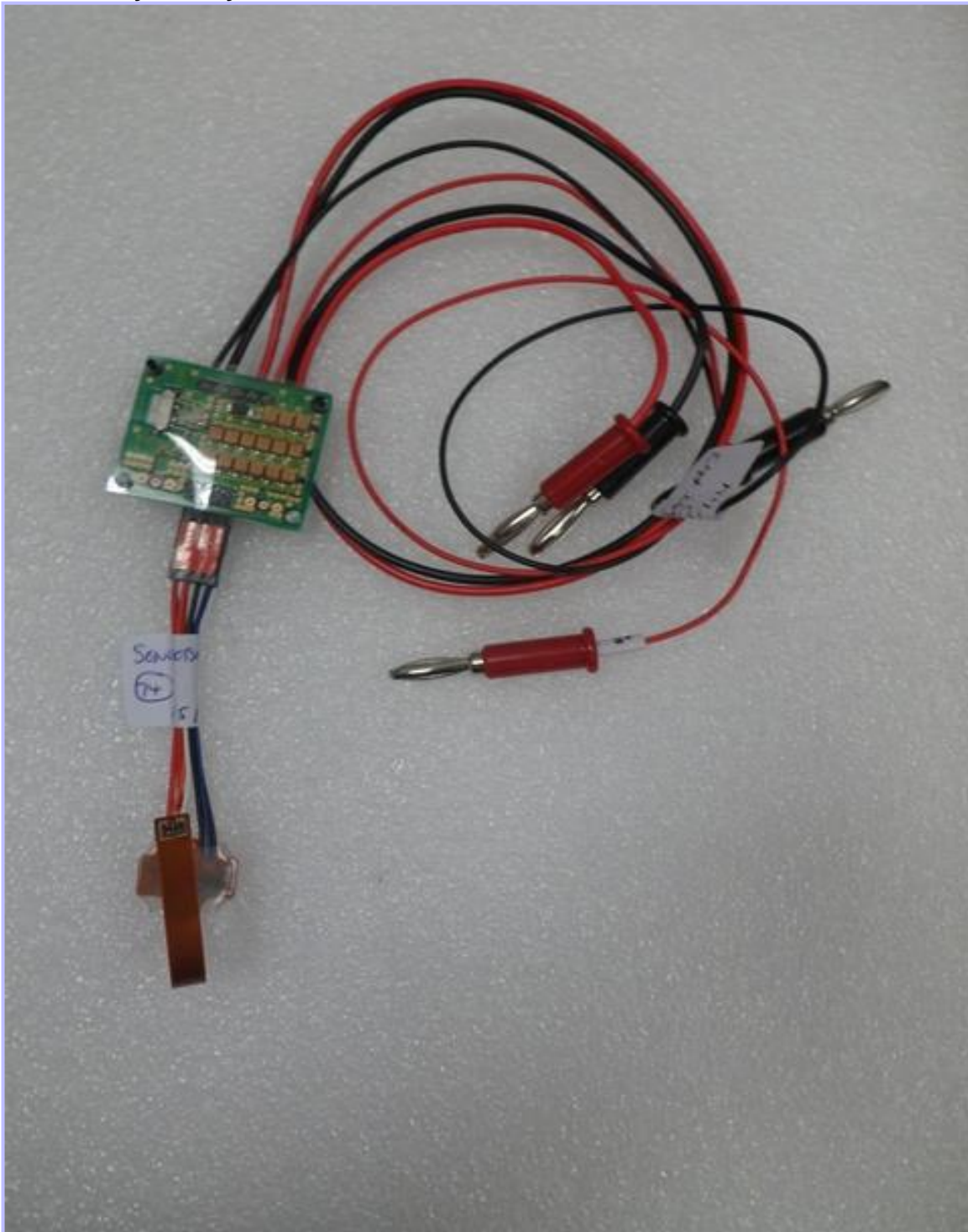




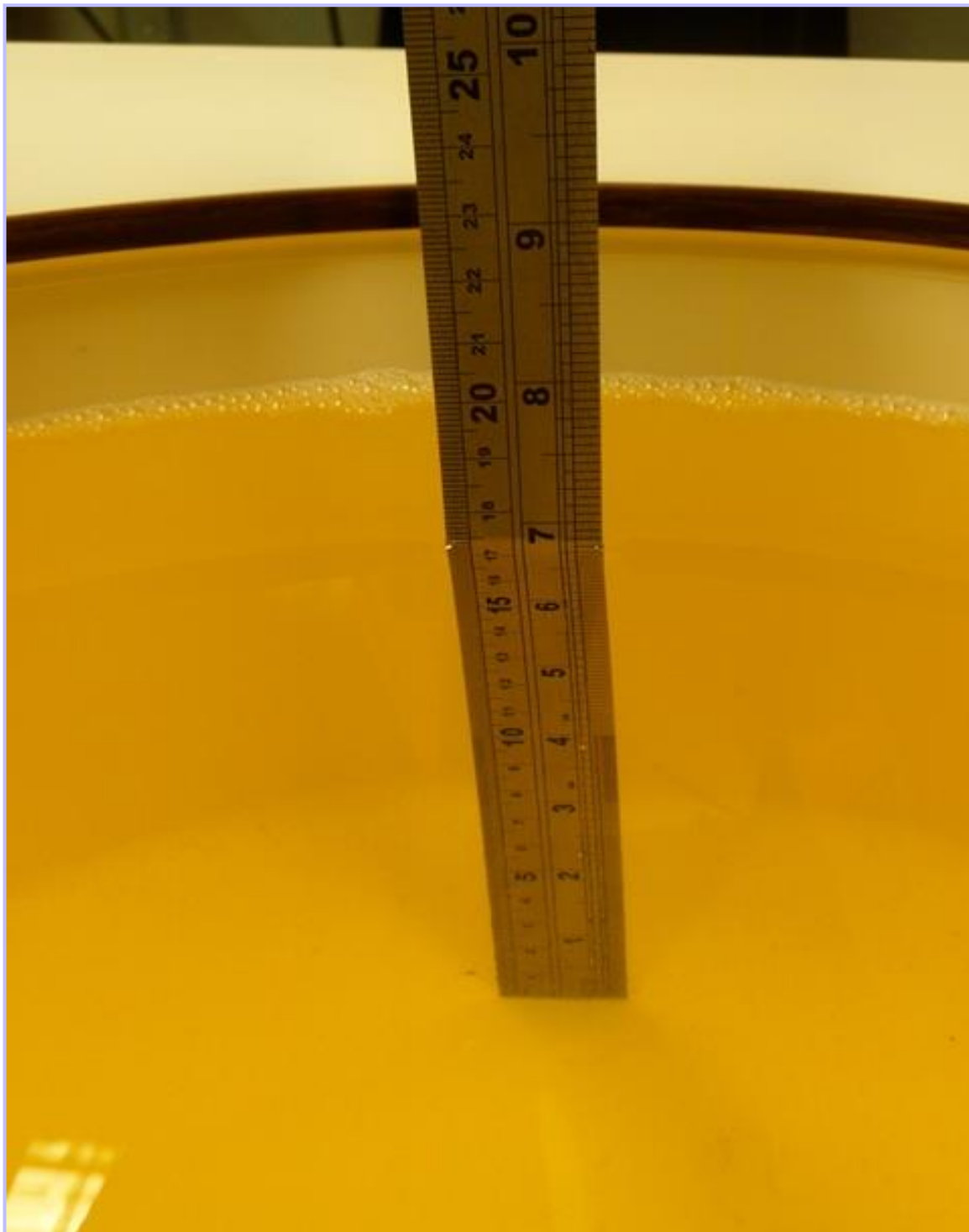
**020: Internal View of Conducted Sample**



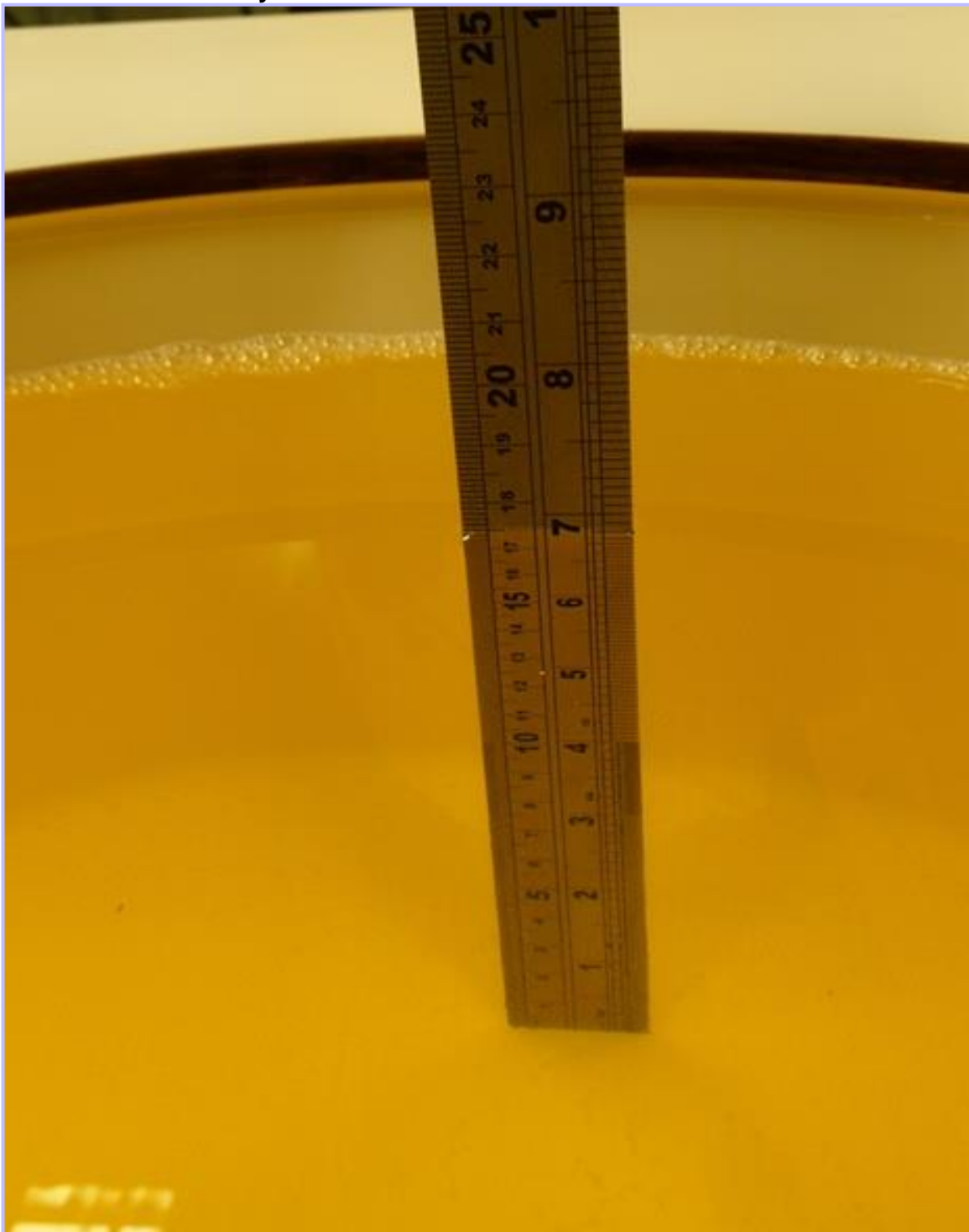
**021: Dummy Battery View**



**022: 850/900 MHz Head Fluid Level**

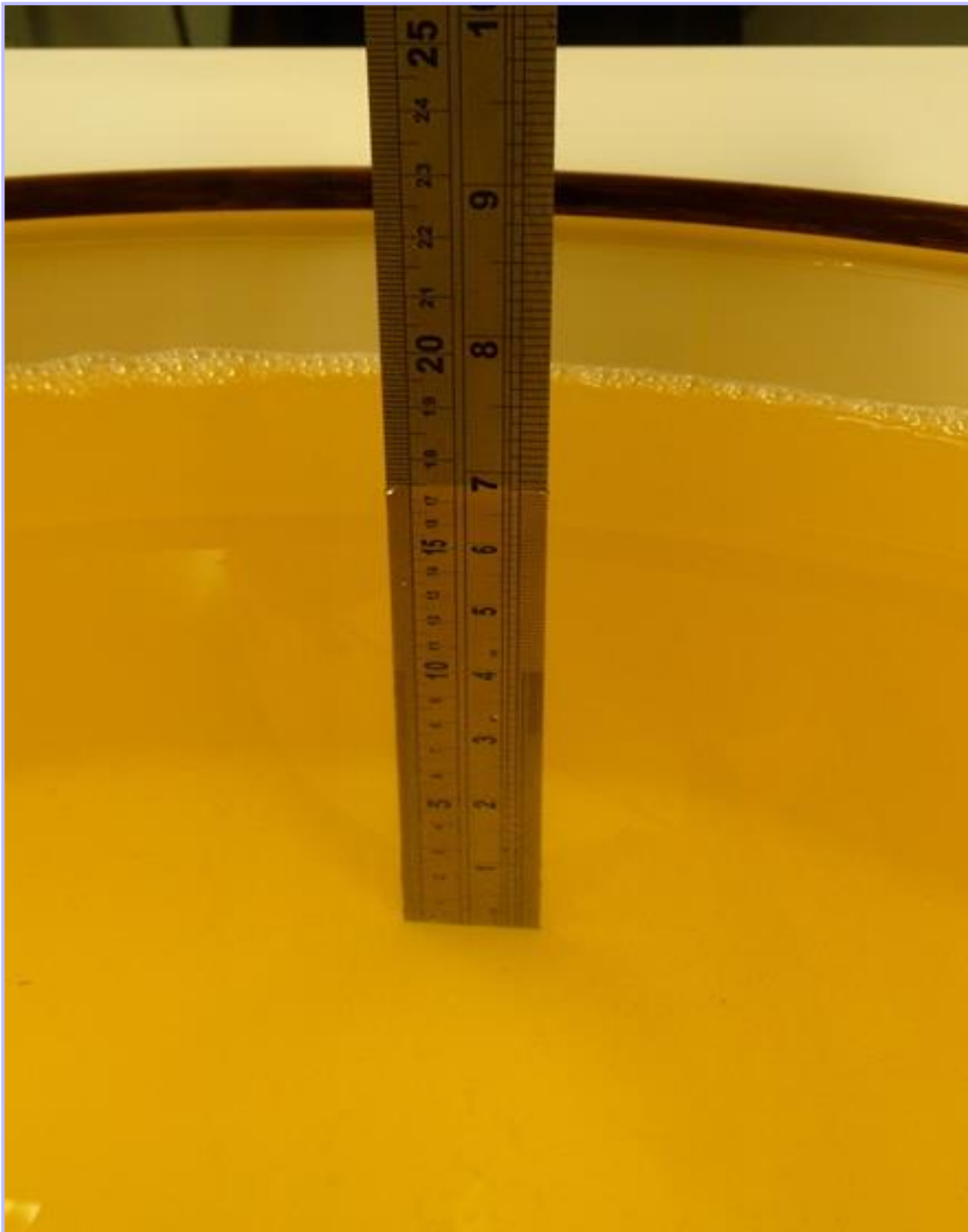


**023: 850/900 MHz Body Fluid Level**





**024: 1900 MHz Head Fluid Level**



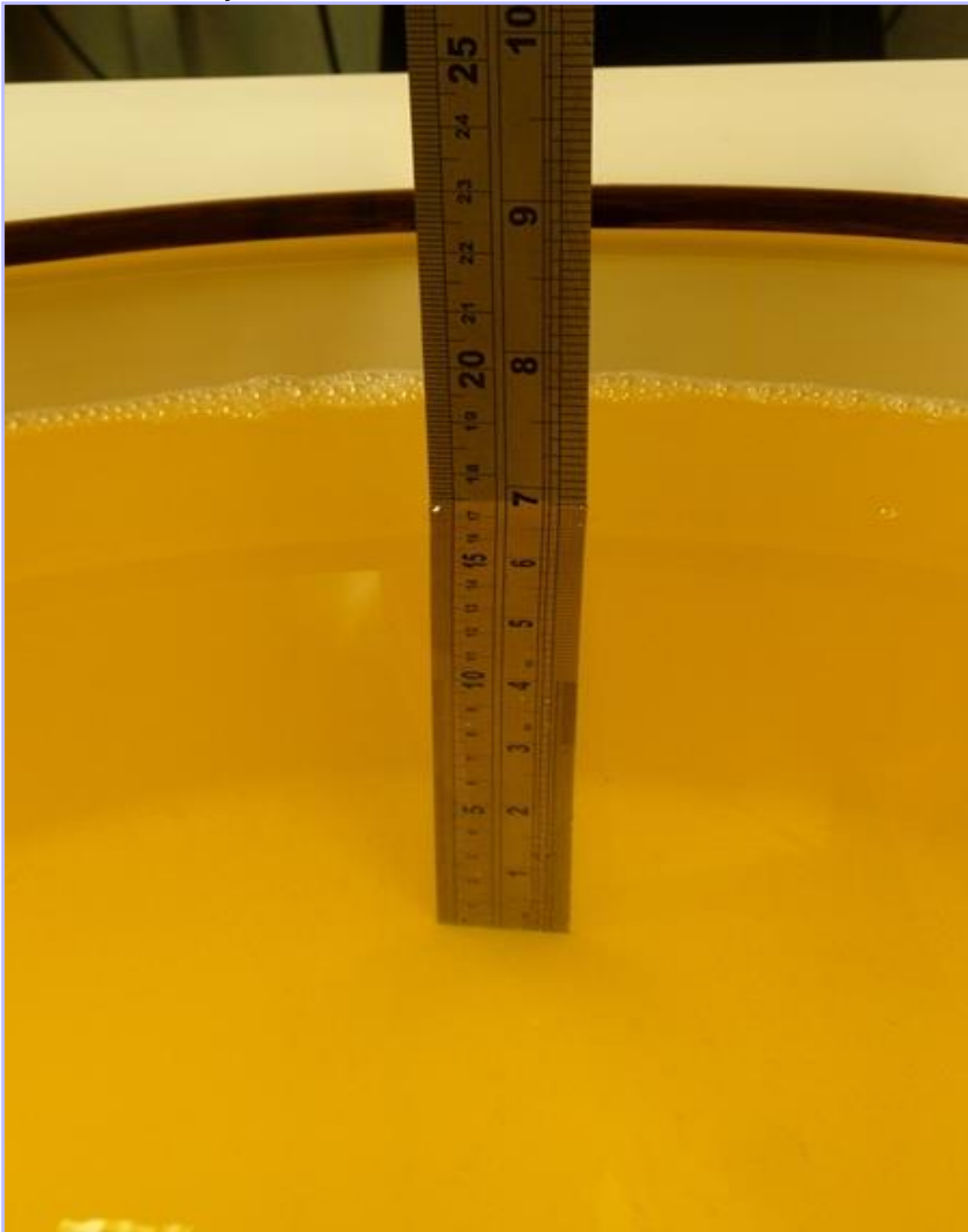
**025: 1900 MHz Body Fluid Level**



**026: 2450 MHz Head Fluid Level**



**027: 2450 MHz Body Fluid Level**





**028: 5.0 GHz Head Fluid Level**



**029: 5.0 GHz Body Fluid Level**

