

APPENDIX 4. PHOTOGRAPHS

This appendix contains the following photographs:

Photo Reference Number	Title
001	Test configuration for the measurement of Specific Absorption Rate (SAR)
002	Touch Left
003	Tilt Left
004	Touch Right
005	Tilt Right
006	Front of EUT Facing Phantom at 10mm
007	Front of EUT Facing Phantom at 15mm
008	Back of EUT Facing Phantom at 10mm
009	Back of EUT Facing Phantom at 15mm
010	Left Hand Side of EUT Facing Phantom
011	Right Hand Side of EUT Facing Phantom
012	Top of EUT Facing Phantom
013	Bottom of EUT Facing Phantom
014	Front View of EUT
015	Rear View of EUT
016	Left Hand Side View of EUT
017	Right Hand Side View of EUT
018	Top View of EUT
019	Bottom View of EUT
020	Internal View of Conducted Sample
021	Dummy Battery View
022	850/900 MHz Head Fluid Level
023	850/900 MHz Body Fluid Level
024	1900 MHz Head Fluid Level
025	1900 MHz Body Fluid Level
026	2450 MHz Head Fluid Level
027	2450 MHz Body Fluid Level
028	5.0 GHz Head Fluid Level
029	5.0 GHz Body Fluid Level

001: Test configuration for the measurement of Specific Absorption Rate (SAR)



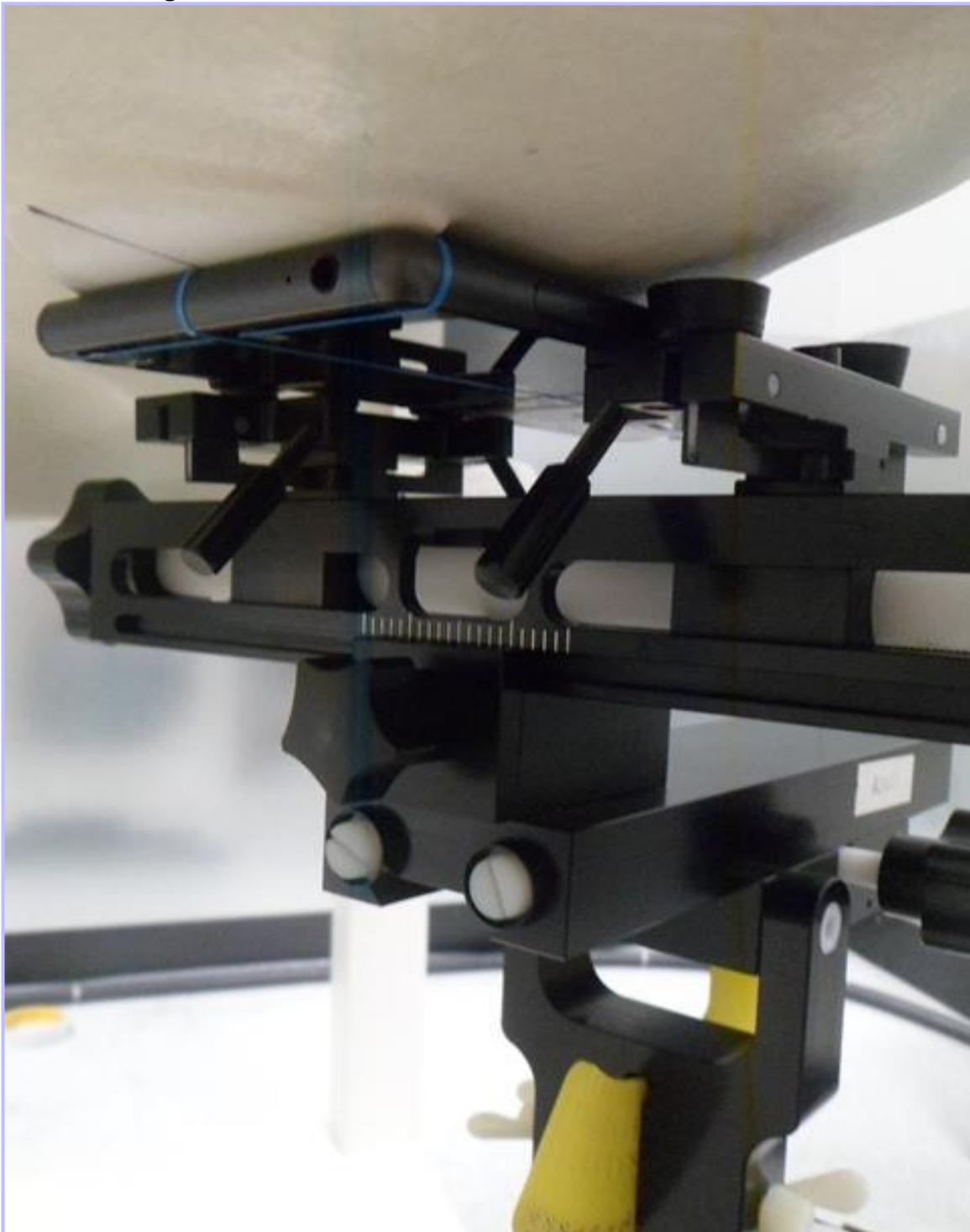
002: Touch Left



003: Tilt Left



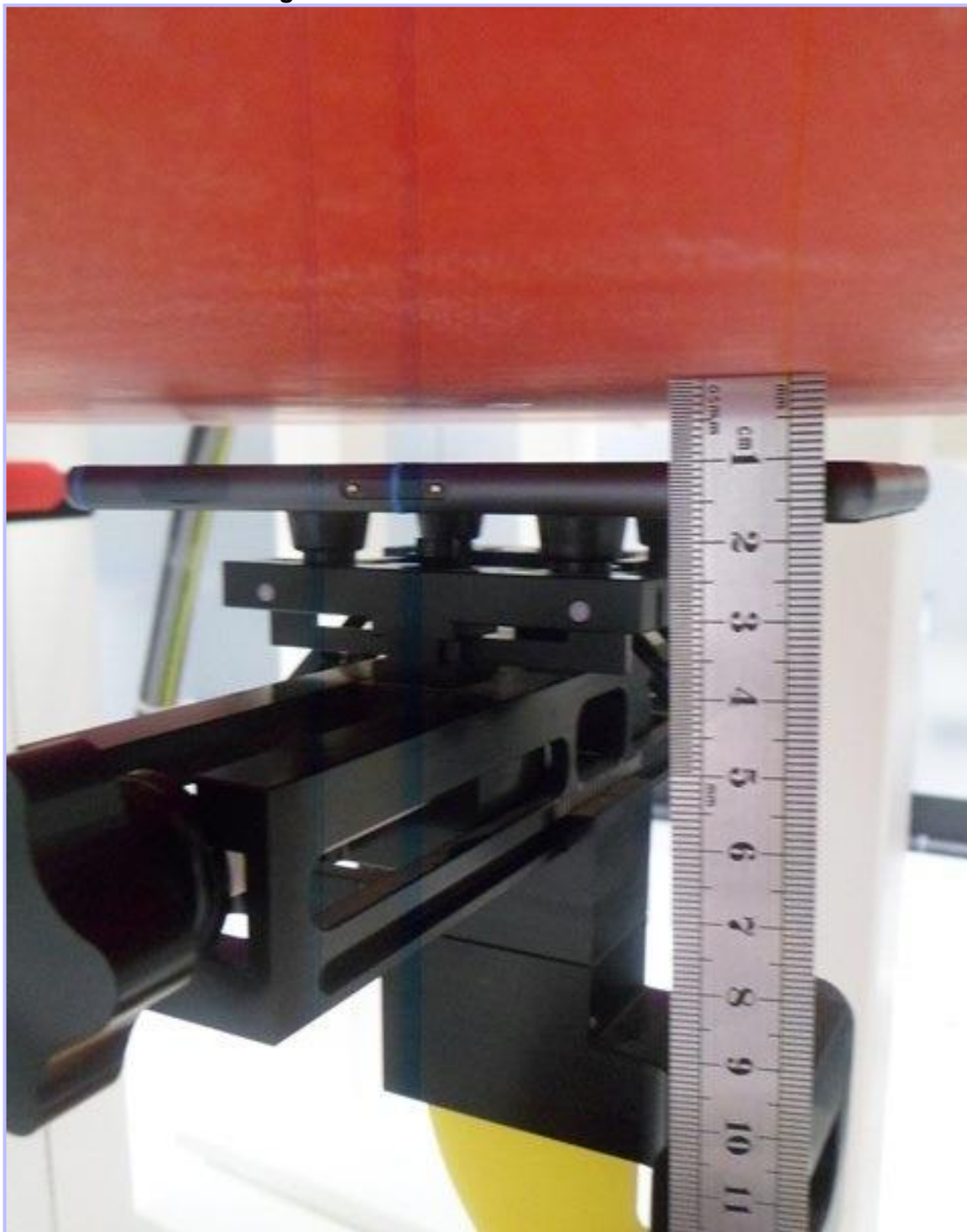
004: Touch Right



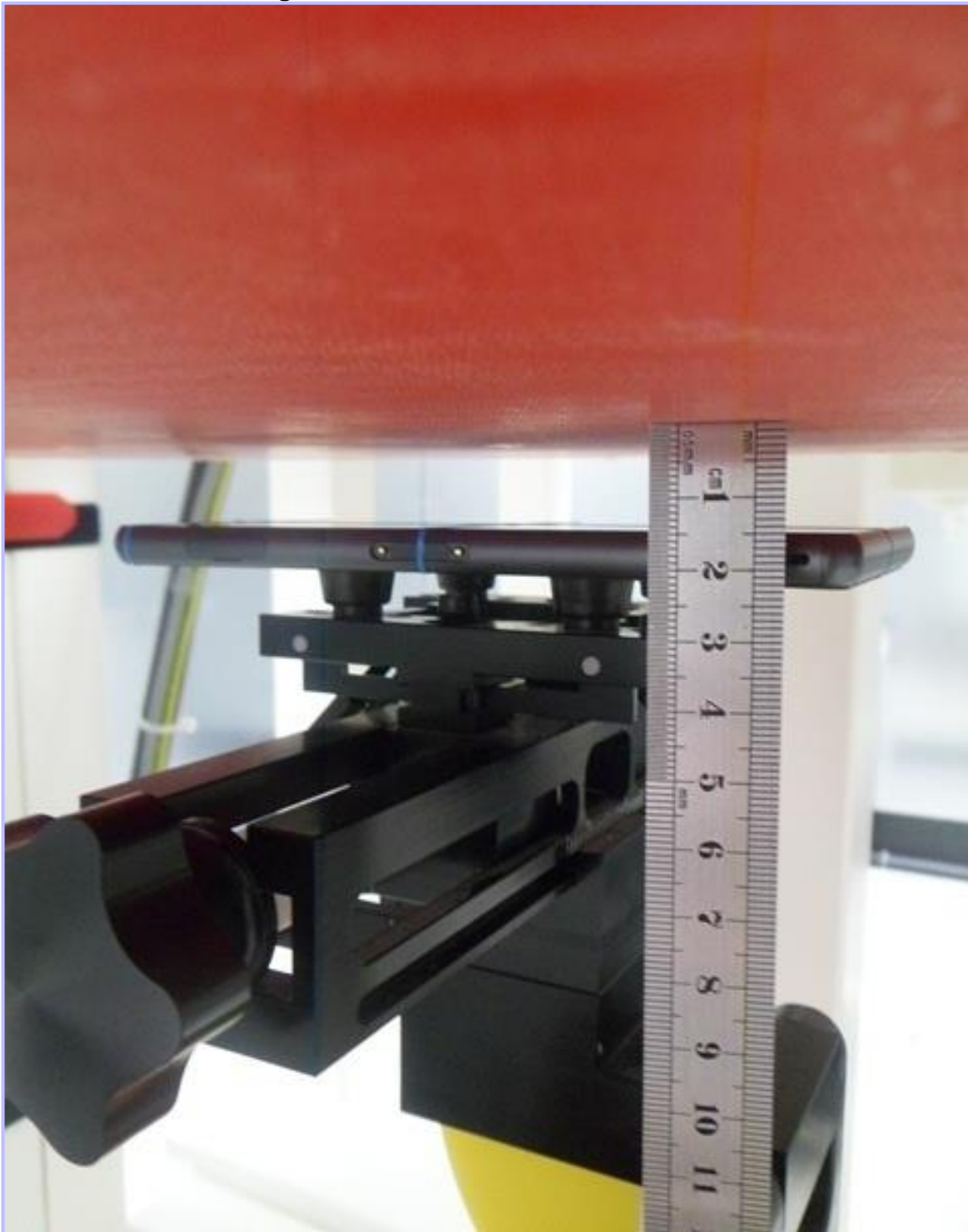
005: Tilt Right



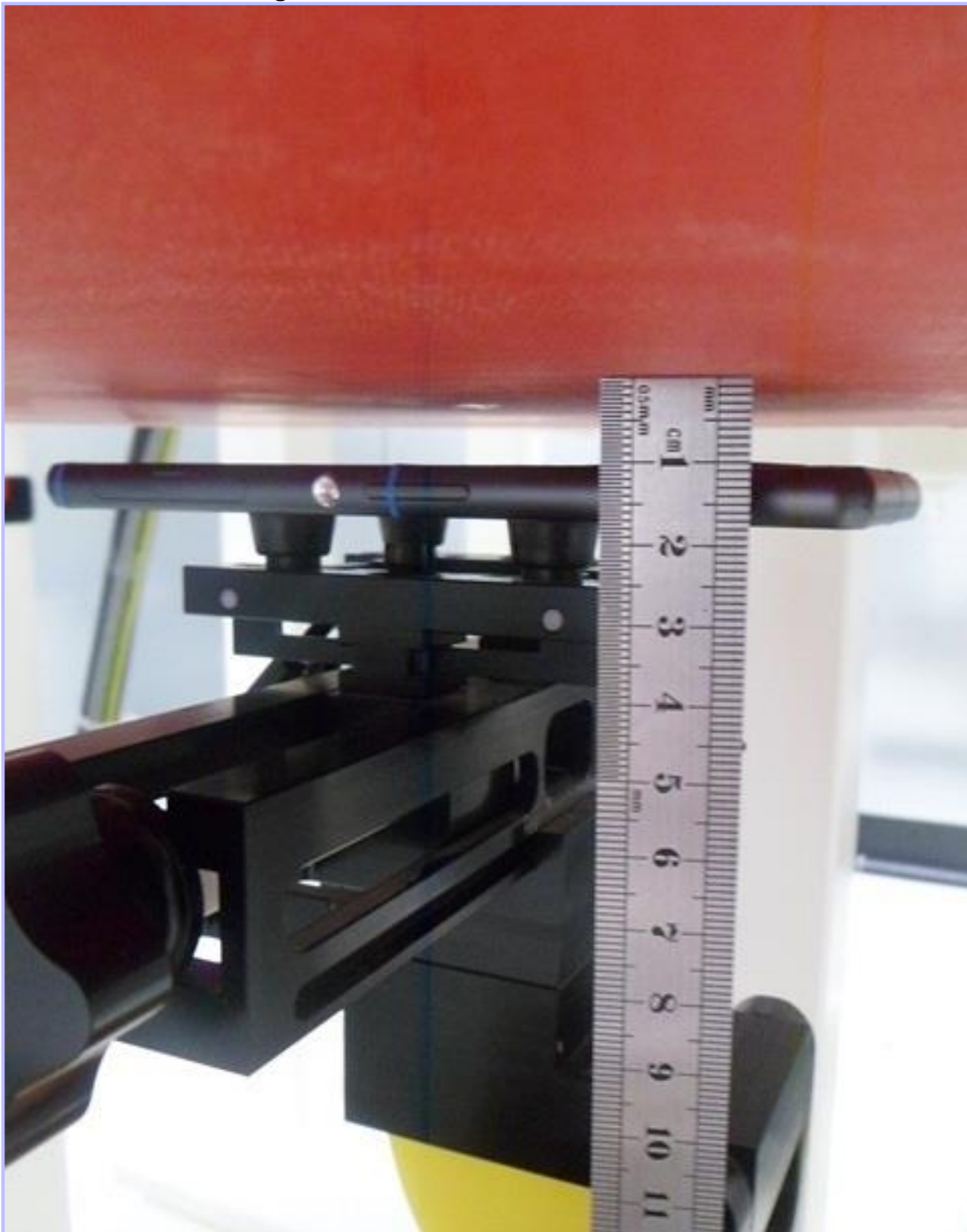
006: Front of EUT Facing Phantom at 10mm



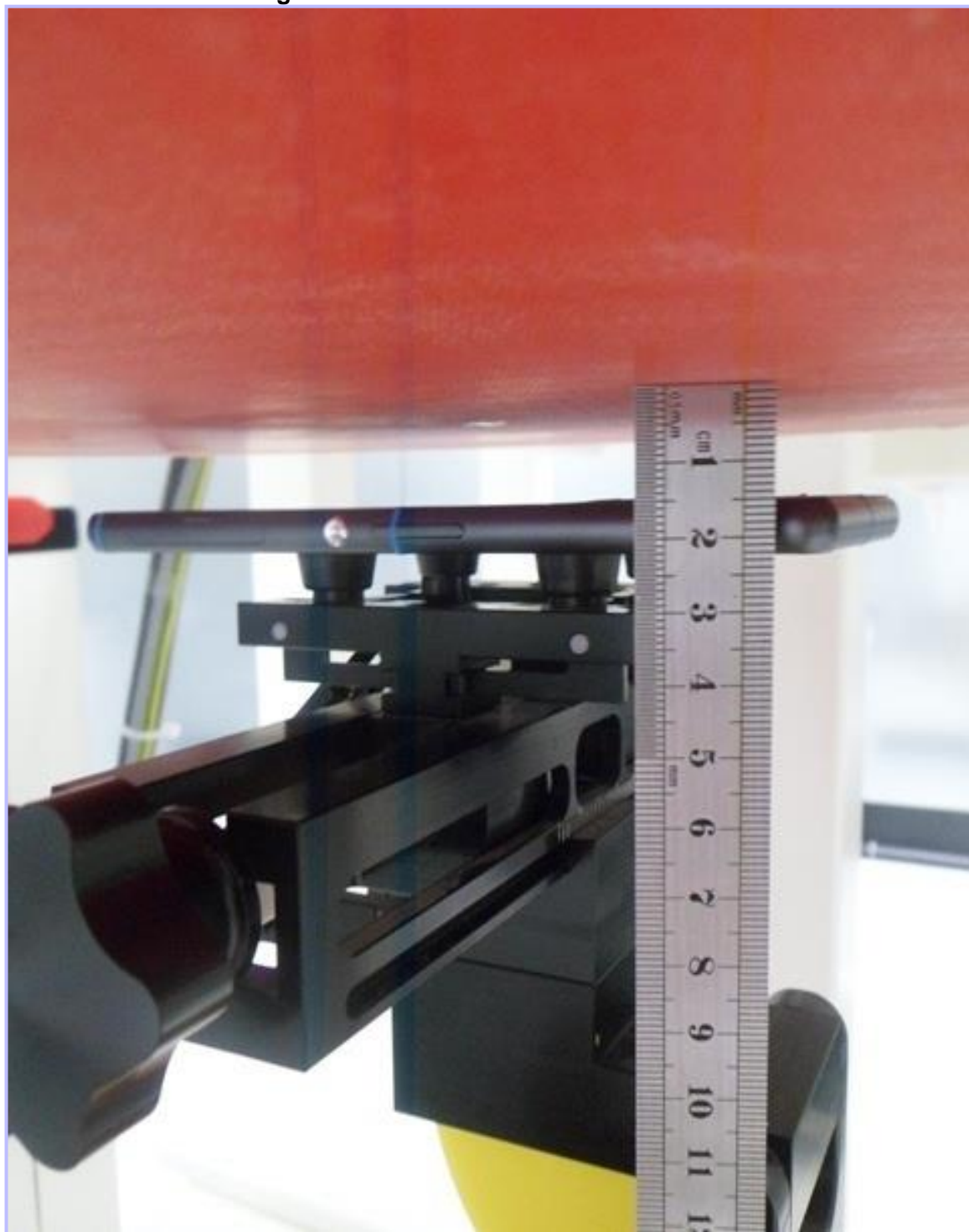
007: Front of EUT Facing Phantom at 15mm



008: Back of EUT Facing Phantom at 10mm



009: Back of EUT Facing Phantom at 15mm



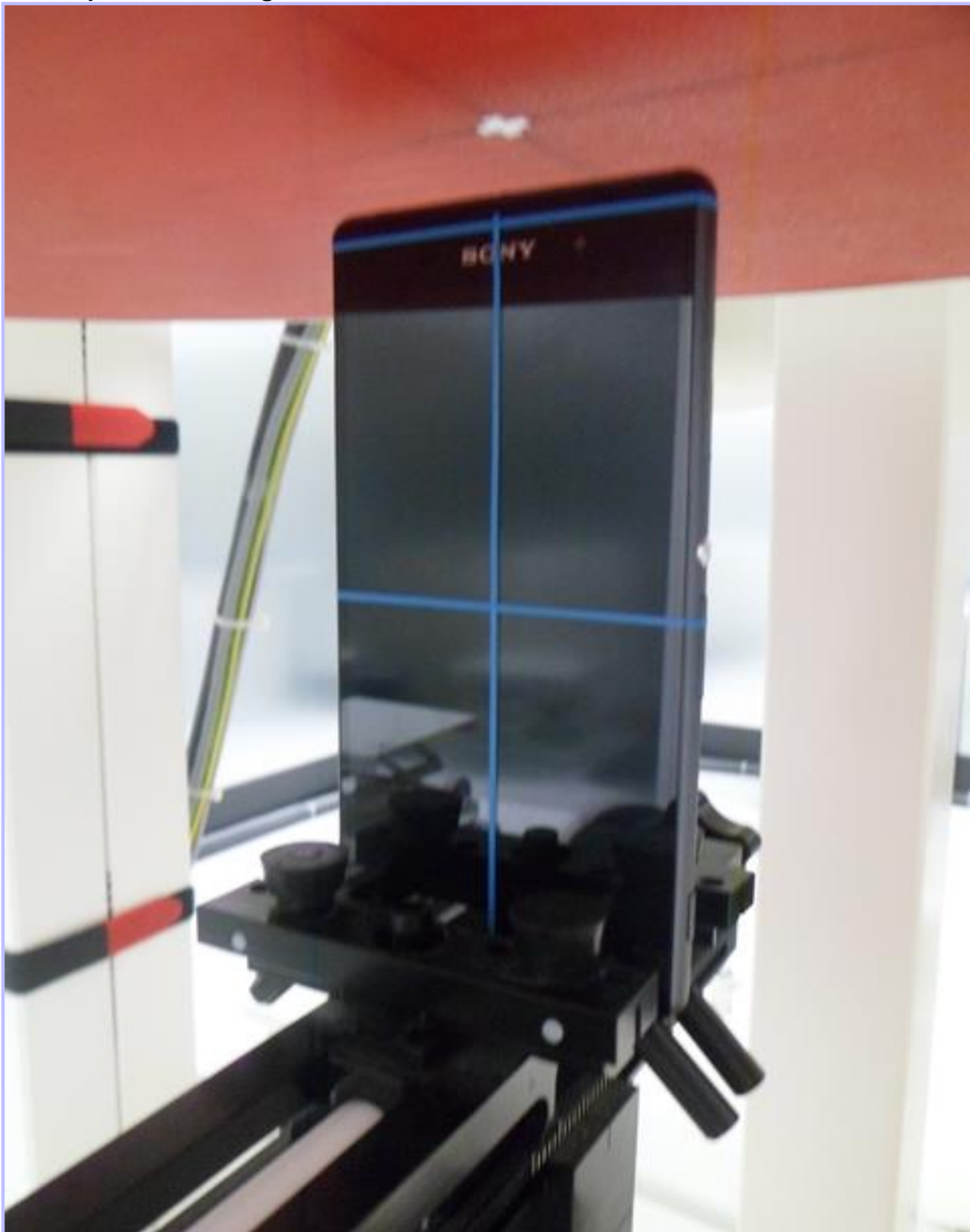
010: Left Hand Side of EUT Facing Phantom



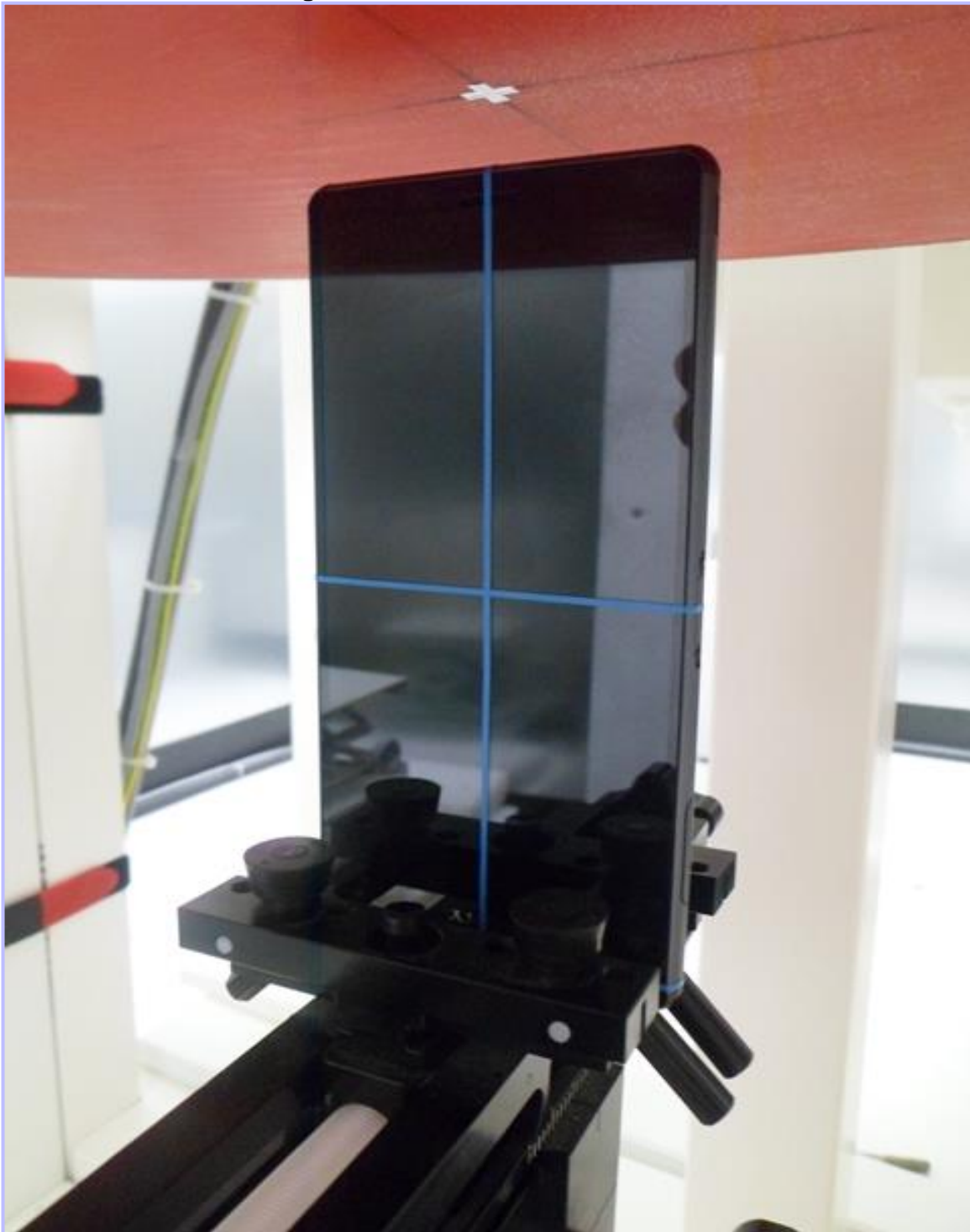
011: Right Hand Side of EUT Facing Phantom



012: Top of EUT Facing Phantom



013: Bottom of EUT Facing Phantom



014: Front View of EUT



015: Rear View of EUT



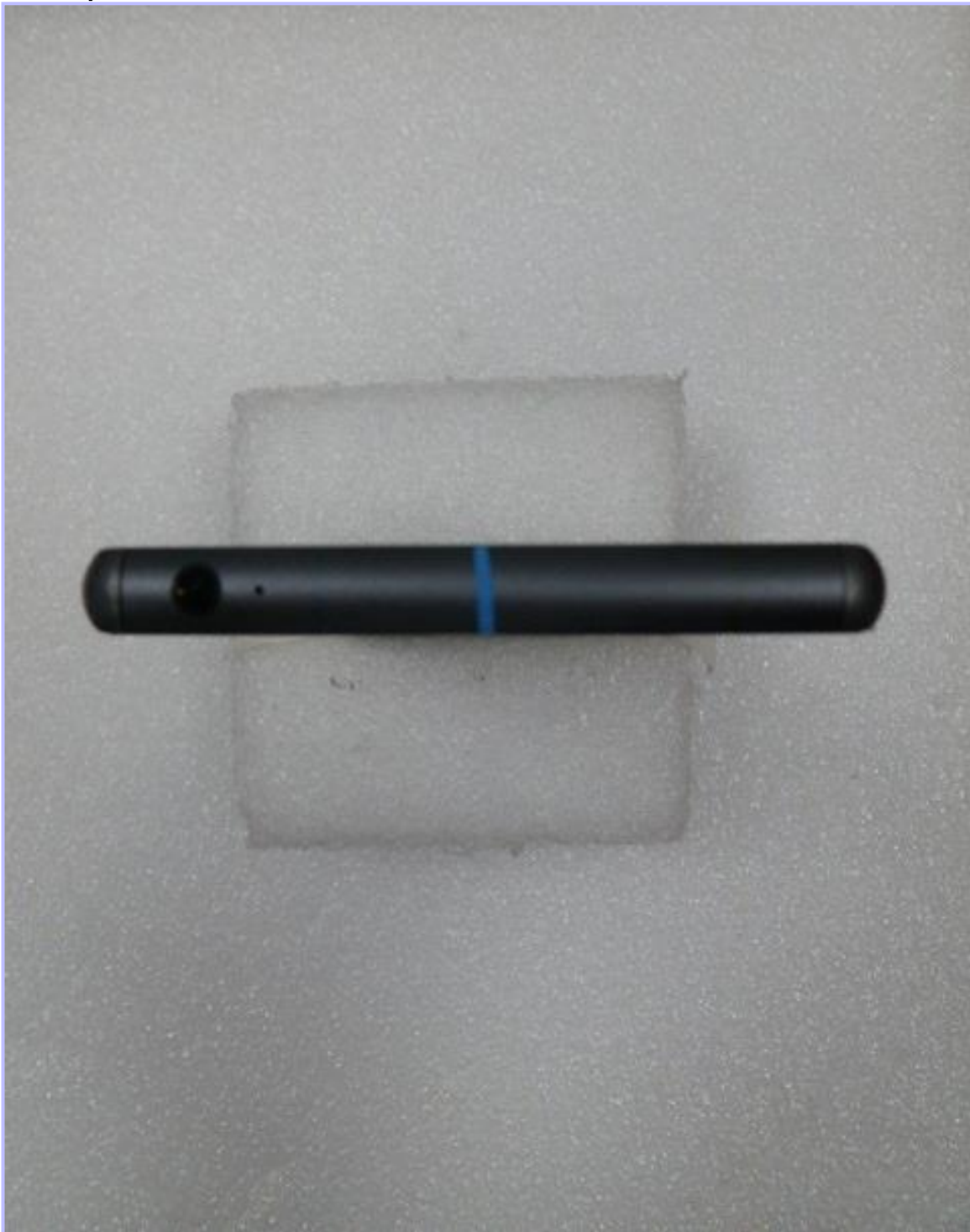
016: Left Hand Side View of EUT



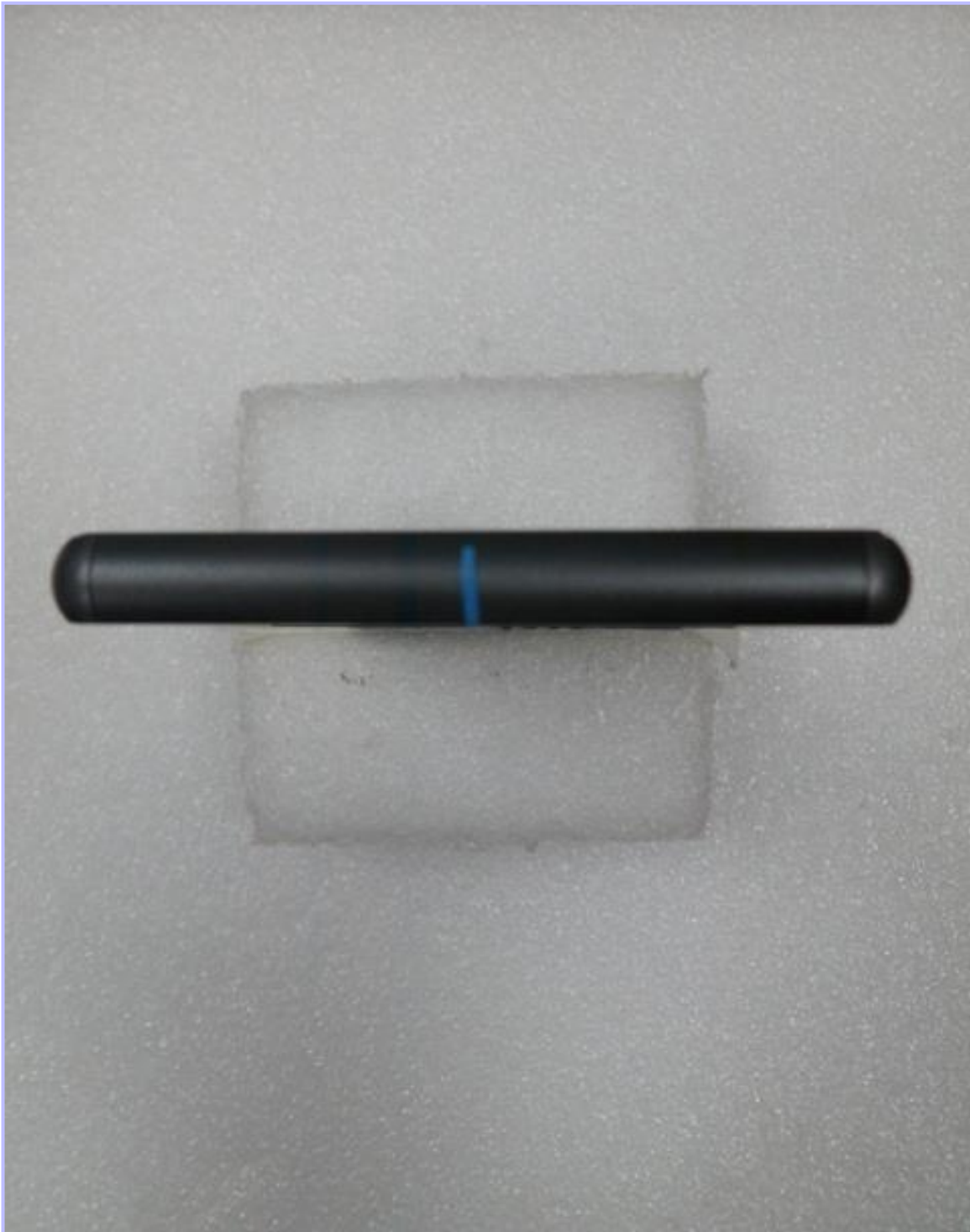
017: Right Hand Side View of EUT



018: Top View of EUT



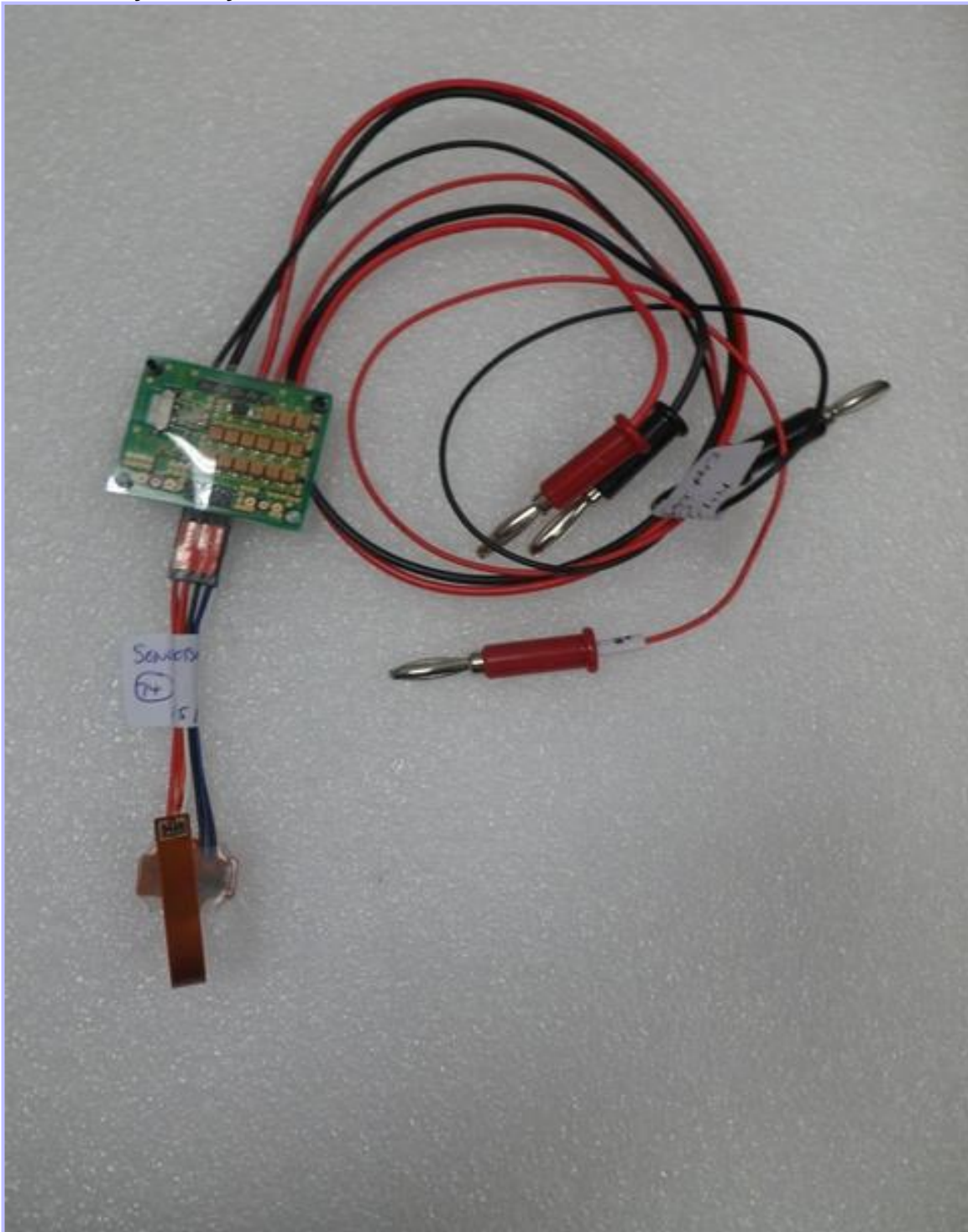
019: Bottom View of EUT



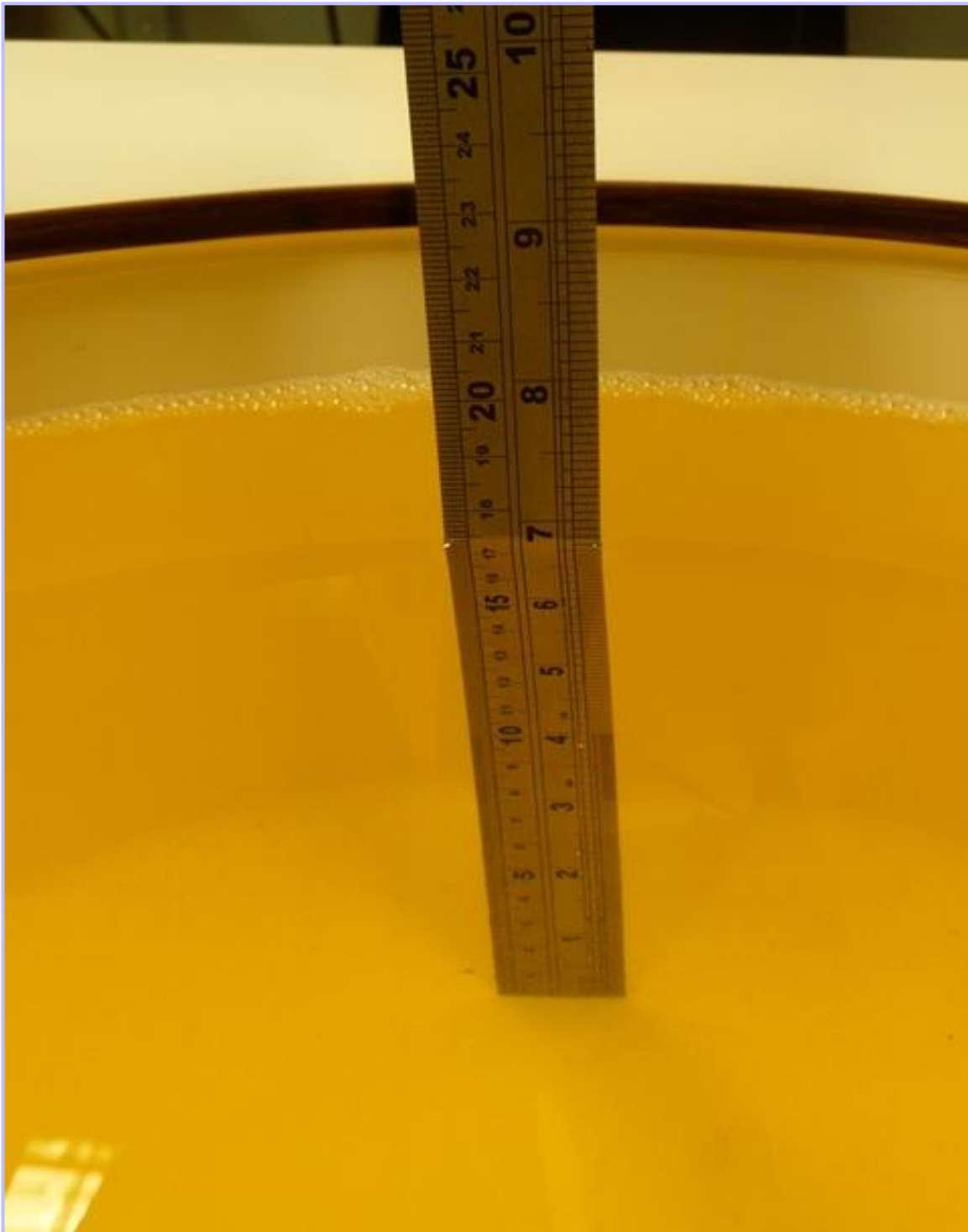
020: Internal View of Conducted Sample



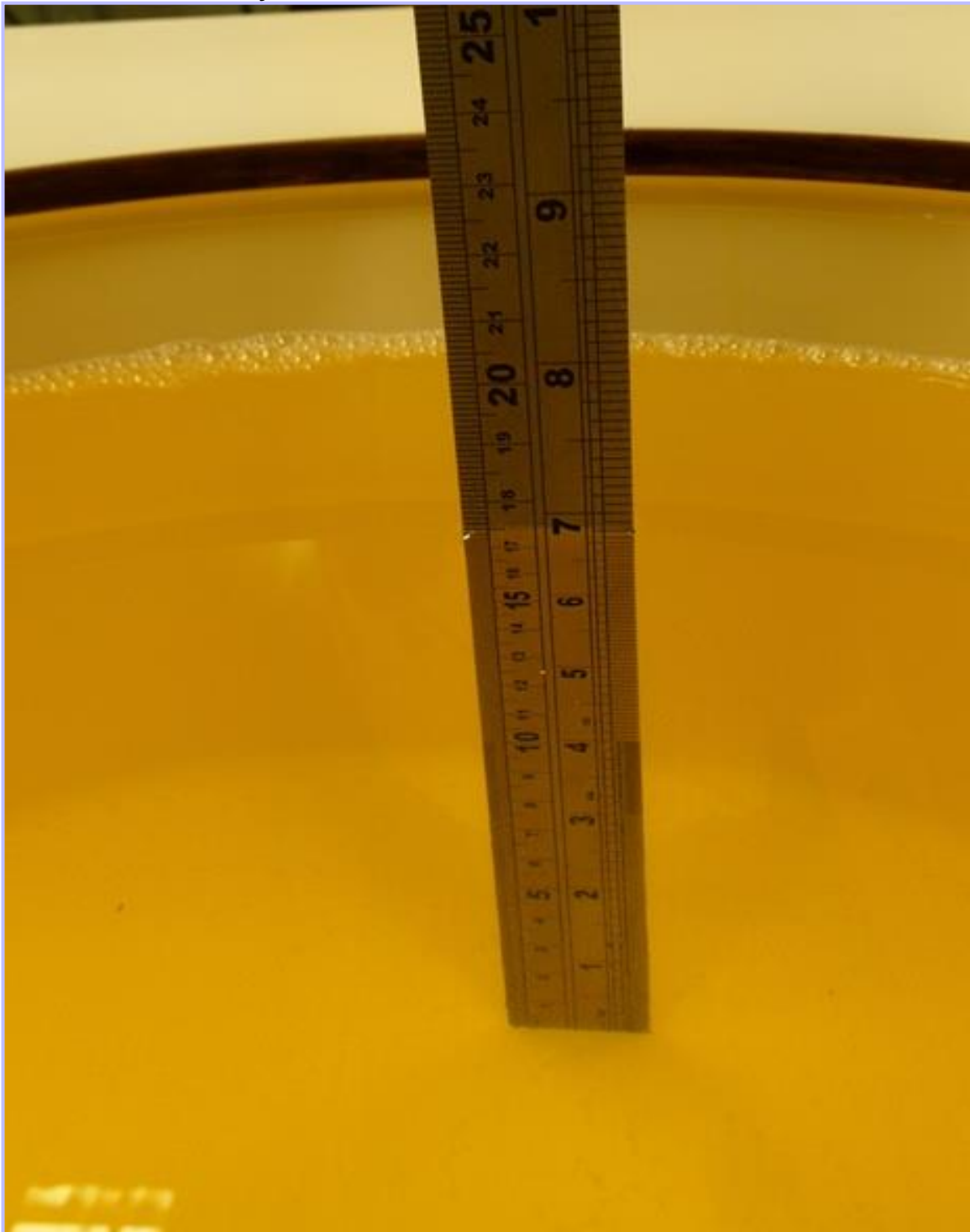
021: Dummy Battery View



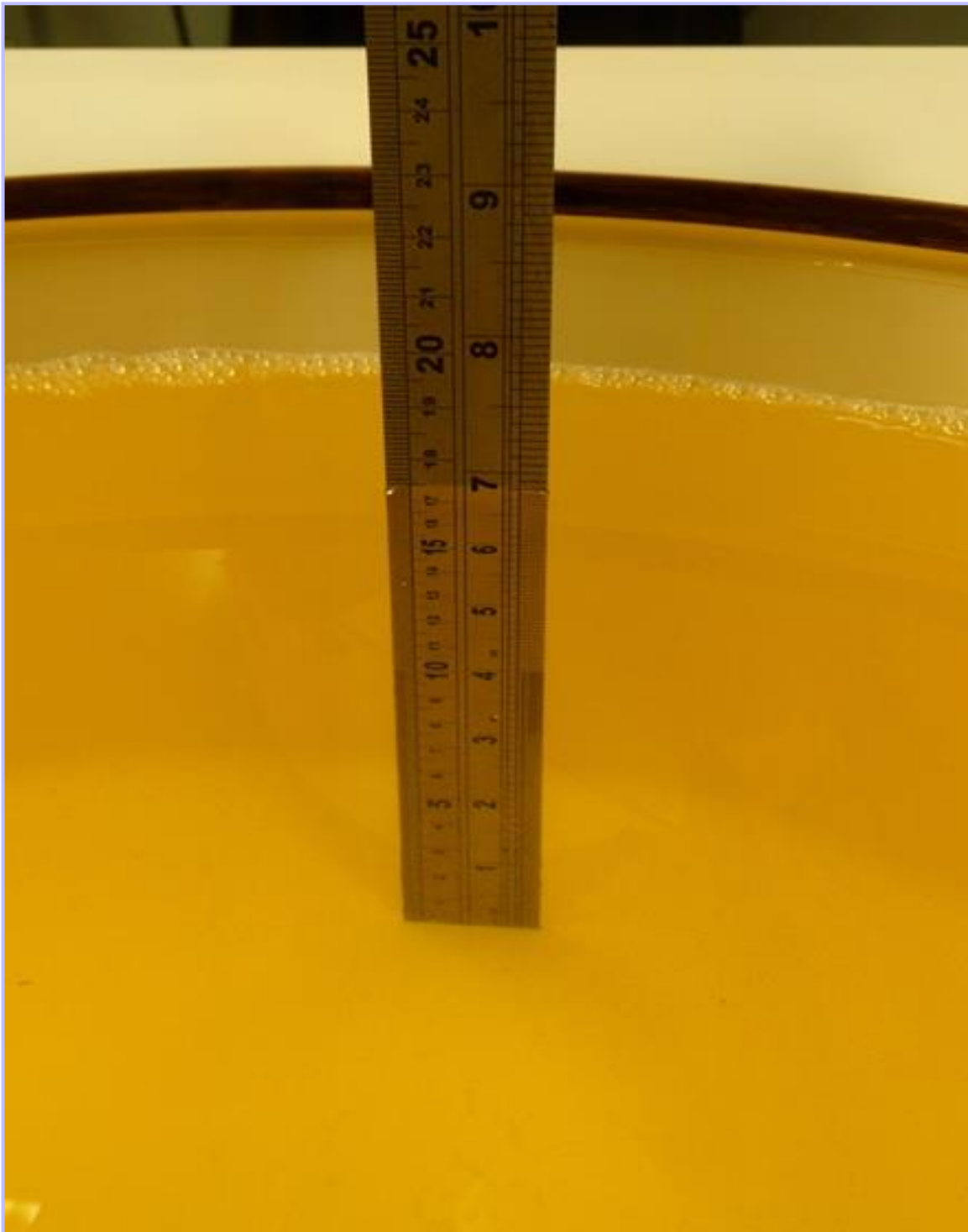
022: 850/900 MHz Head Fluid Level



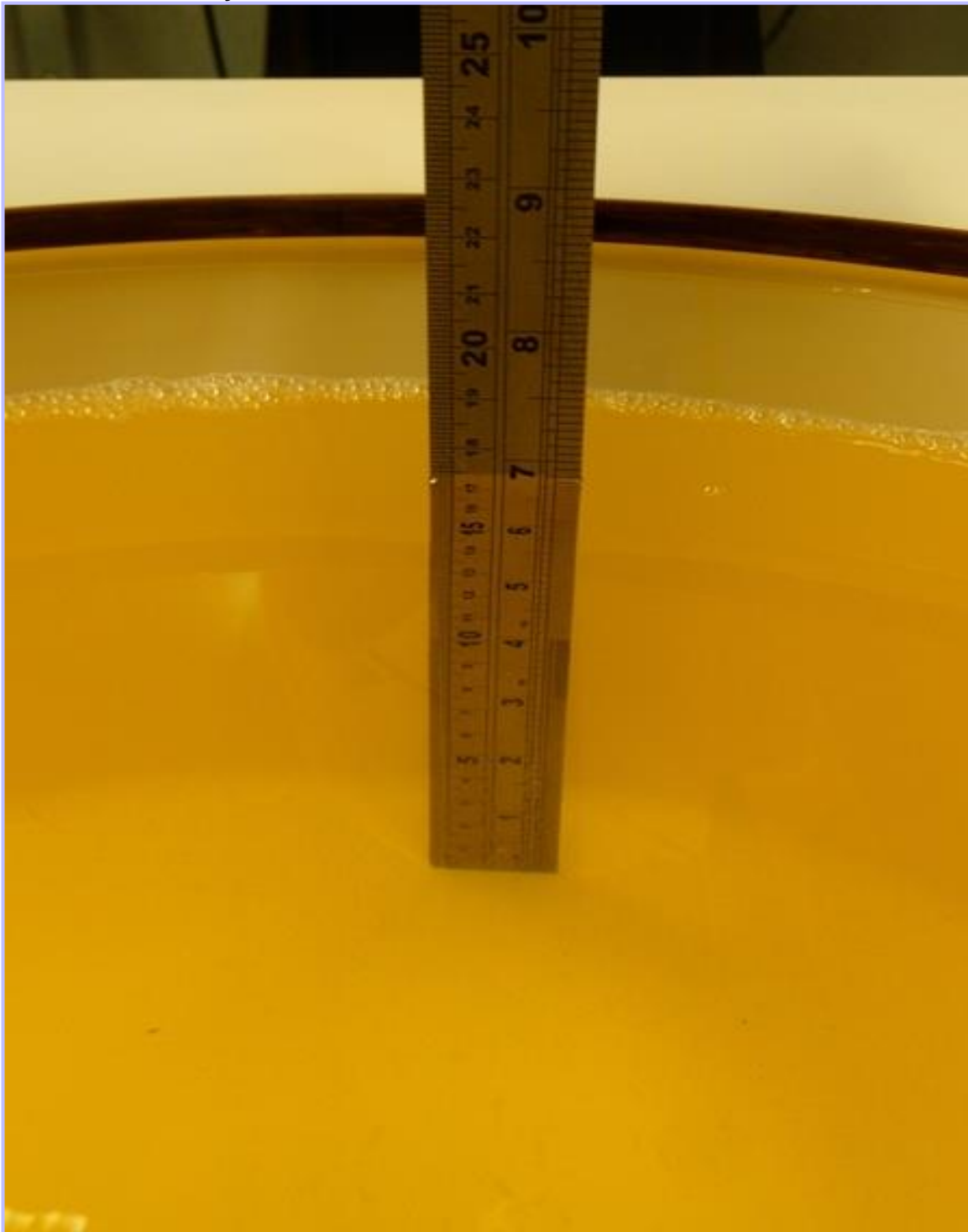
023: 850/900 MHz Body Fluid Level



024: 1900 MHz Head Fluid Level



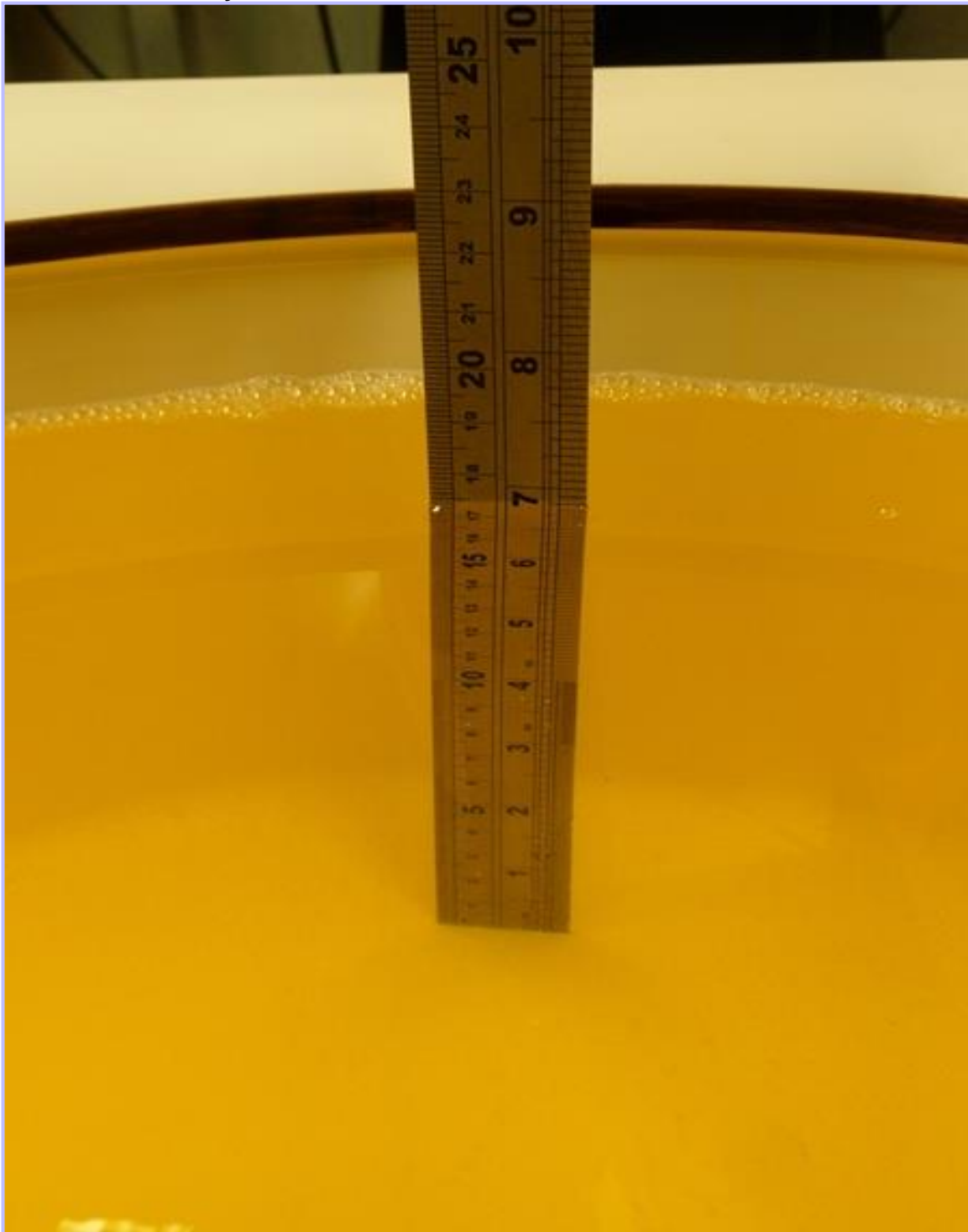
025: 1900 MHz Body Fluid Level



026: 2450 MHz Head Fluid Level



027: 2450 MHz Body Fluid Level



028: 5.0 GHz Head Fluid Level



029: 5.0 GHz Body Fluid Level

