

## APPENDIX 4. PHOTOGRAPHS

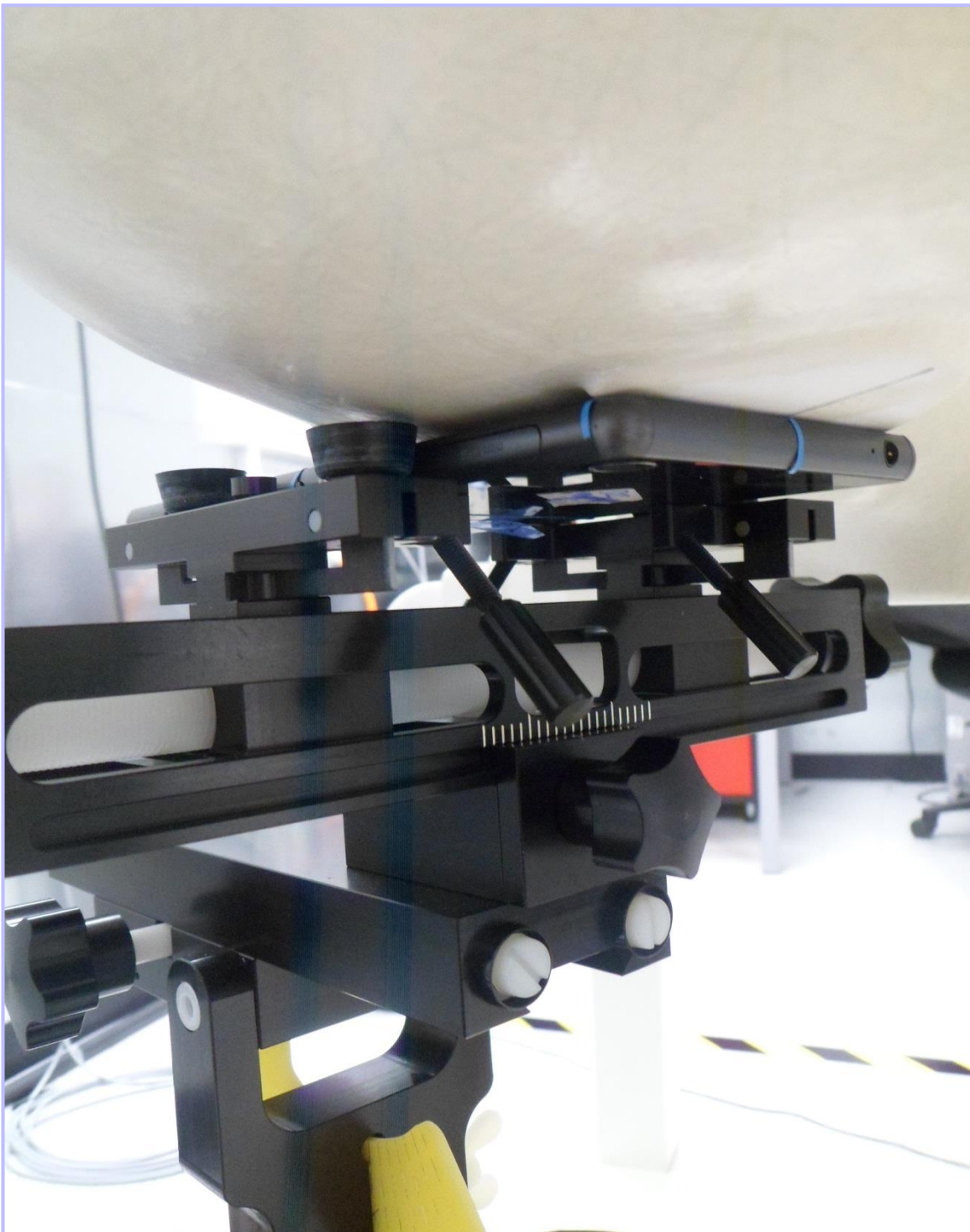
This appendix contains the following photographs:

Photo Reference Number	Title
PHT/ 10295122JD06/001	Test configuration for the measurement of Specific Absorption Rate (SAR)
PHT/ 10295122JD06/002	Touch Left
PHT/ 10295122JD06/003	Tilt Left
PHT/ 10295122JD06/004	Touch Right
PHT/ 10295122JD06/005	Tilt Right
PHT/ 10295122JD06/006	Front of EUT Facing Phantom 10mm Separation
PHT/ 10295122JD06/007	Front of EUT Facing Phantom 15mm Separation
PHT/ 10295122JD06/008	Back of EUT Facing Phantom 10mm Separation
PHT/ 10295122JD06/009	Back of EUT Facing Phantom 15mm Separation
PHT/ 10295122JD06/010	Left Hand Side of EUT Facing Phantom 10mm Separation
PHT/ 10295122JD06/011	Right Hand Side of EUT Facing Phantom 10mm Separation
PHT/ 10295122JD06/012	Top of EUT Facing Phantom 10mm Separation
PHT/ 10295122JD06/013	Bottom of EUT Facing Phantom 10mm Separation
PHT/ 10295122JD06/014	Front View of EUT
PHT/ 10295122JD06/015	Back View of EUT
PHT/ 10295122JD06/016	Left Hand Side View of EUT
PHT/ 10295122JD06/017	Right Hand Side View of EUT
PHT/ 10295122JD06/018	Top View of EUT
PHT/ 10295122JD06/019	Bottom View of EUT
PHT/ 10295122JD06/020	Internal View of Conducted Sample
PHT/ 10295122JD06/021	750/900 Head Fluid Level
PHT/ 10295122JD06/022	750/900 Body Fluid Level
PHT/ 10295122JD06/023	1800/1900 Head Fluid Level
PHT/ 10295122JD06/024	1800/1900 Body Fluid Level
PHT/ 10295122JD06/025	2450 Head Fluid Level
PHT/ 10295122JD06/026	2450 Body Fluid Level
PHT/ 10295122JD06/027	5GHz Head Fluid Level
PHT/ 10295122JD06/028	5GHz Body Fluid Level

**PHT/ 10295122JD06/001: Test configuration for the measurement of Specific Absorption Rate (SAR)**



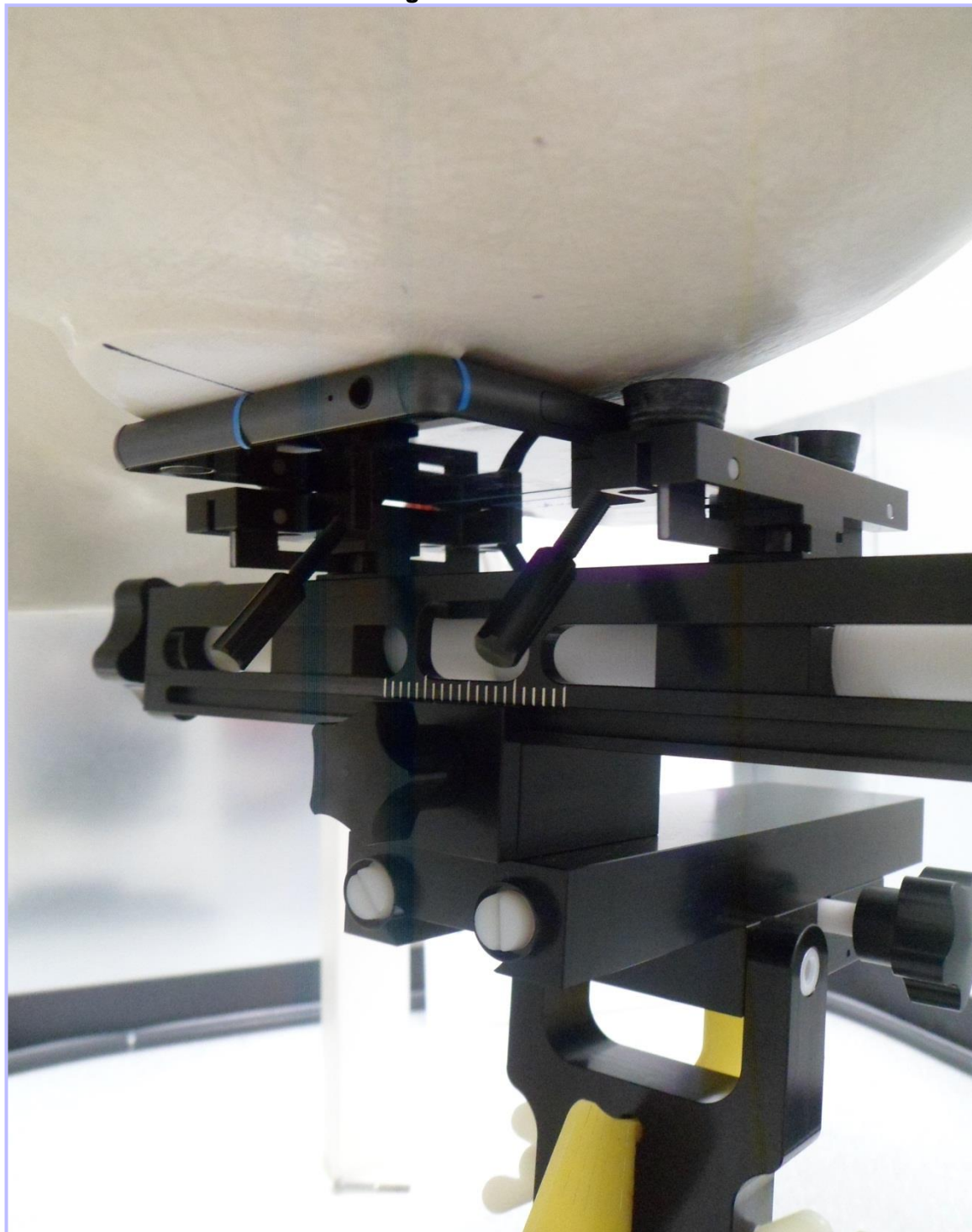
**PHT/ 10295122JD06/002: Touch Left**



**PHT/ 10295122JD06/003: Tilt Left**



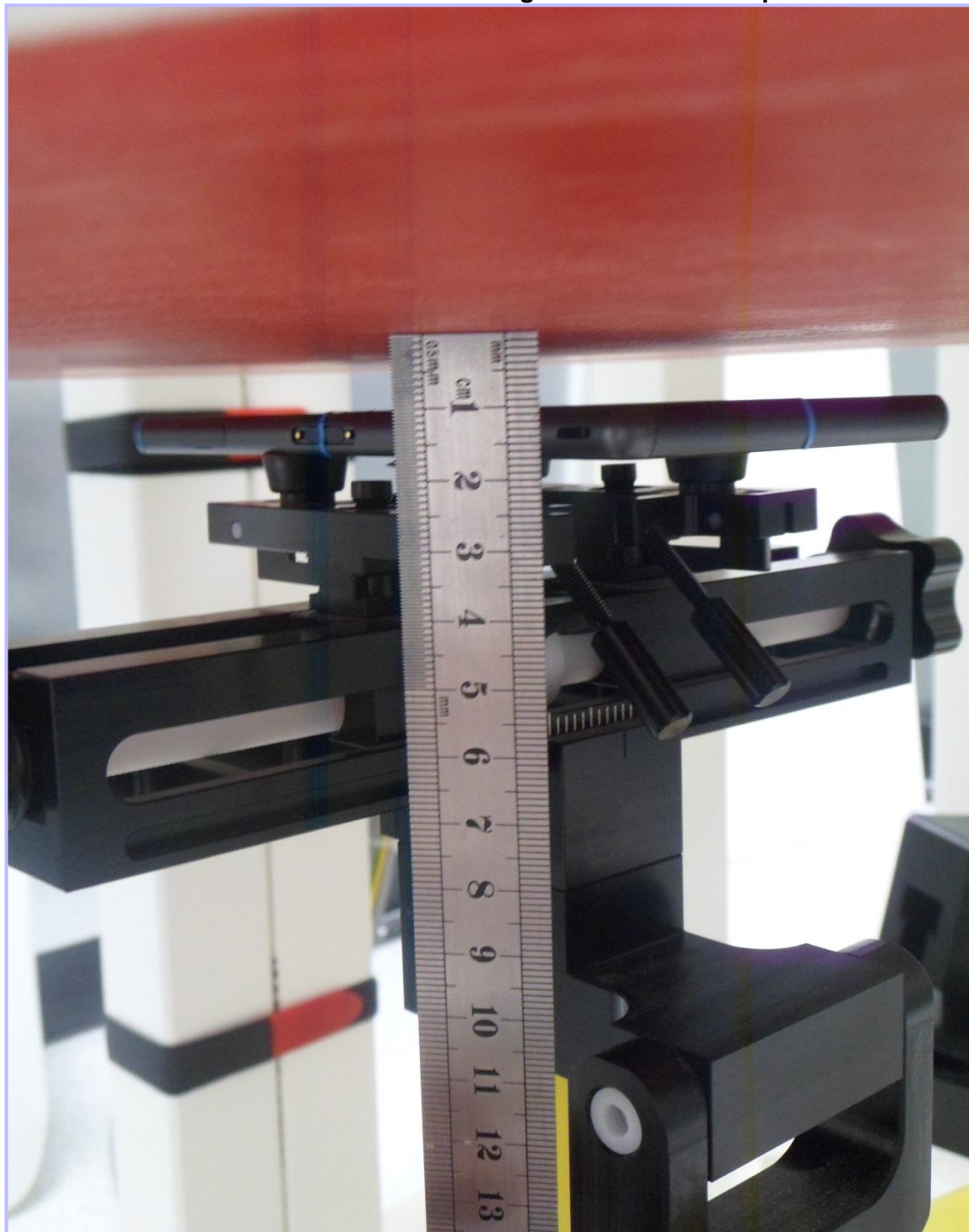
**PHT/ 10295122JD06/004: Touch Right**



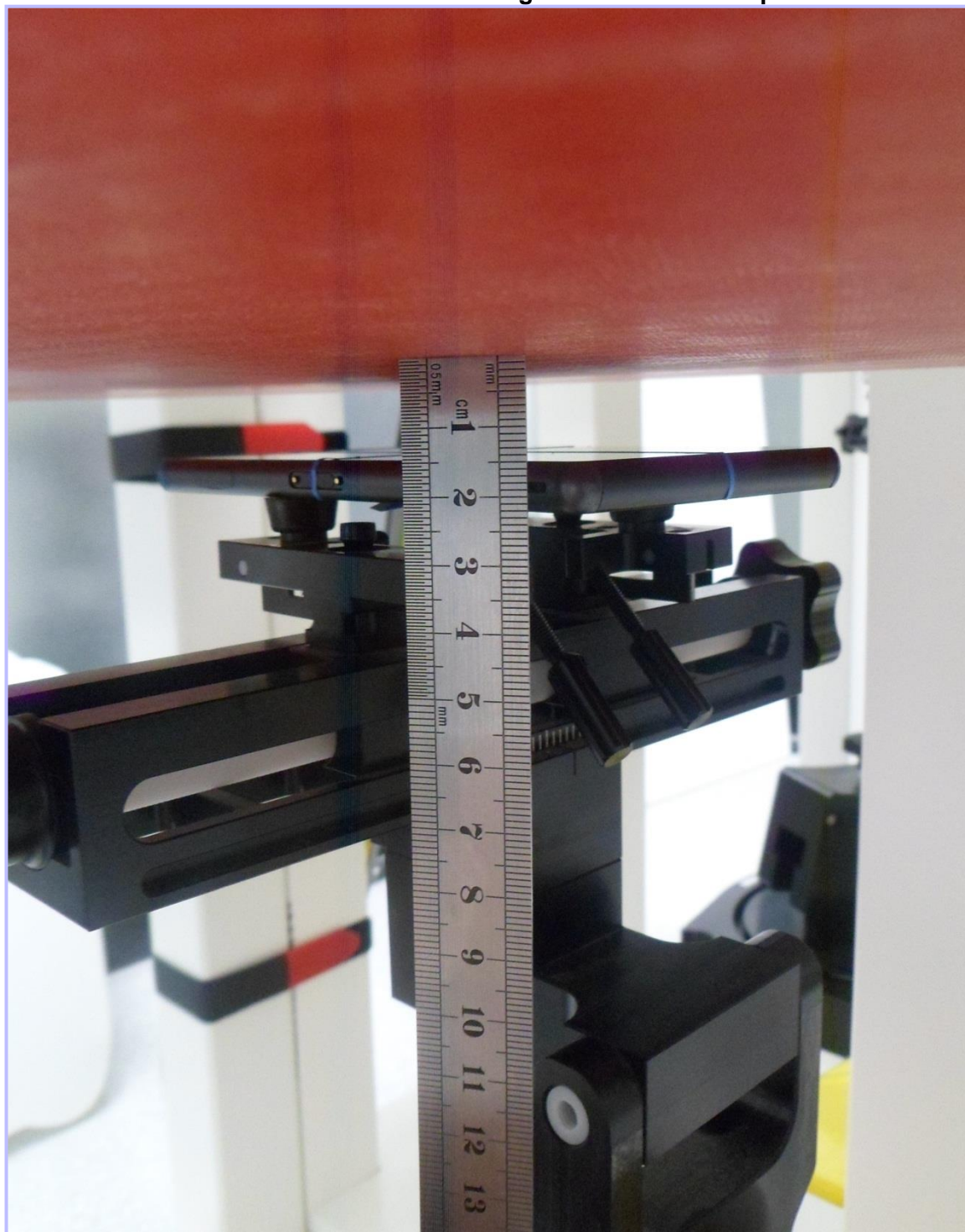
**PHT/ 10295122JD06/005: Tilt Right**



**PHT/ 10295122JD06/006: Front of EUT Facing Phantom 10mm Separation**

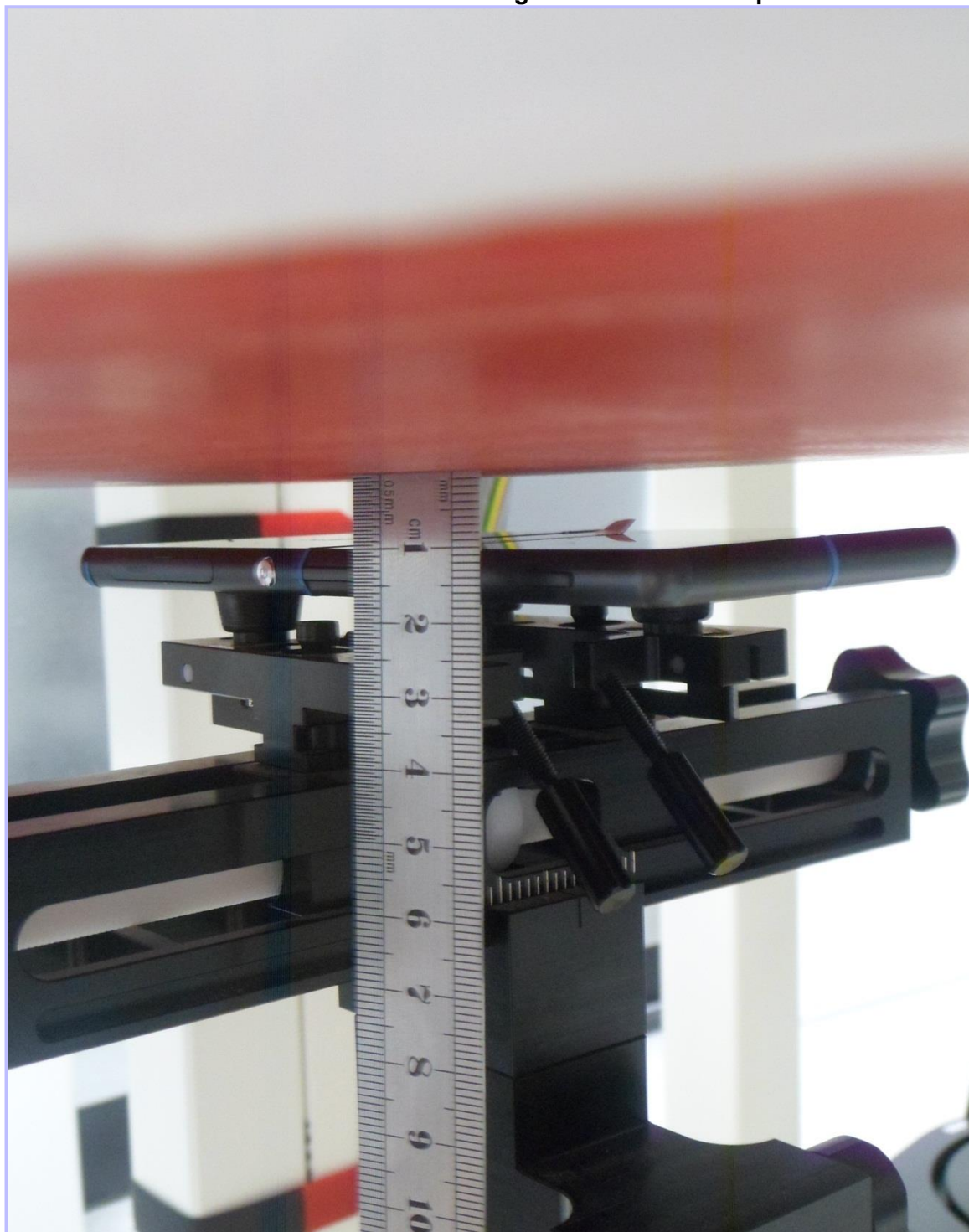


**PHT/ 10295122JD06/007: Front of EUT Facing Phantom 15mm Separation**





**PHT/ 10295122JD06/008: Back of EUT Facing Phantom 10mm Separation**



**PHT/ 10295122JD06/009: Back of EUT Facing Phantom 15mm Separation**



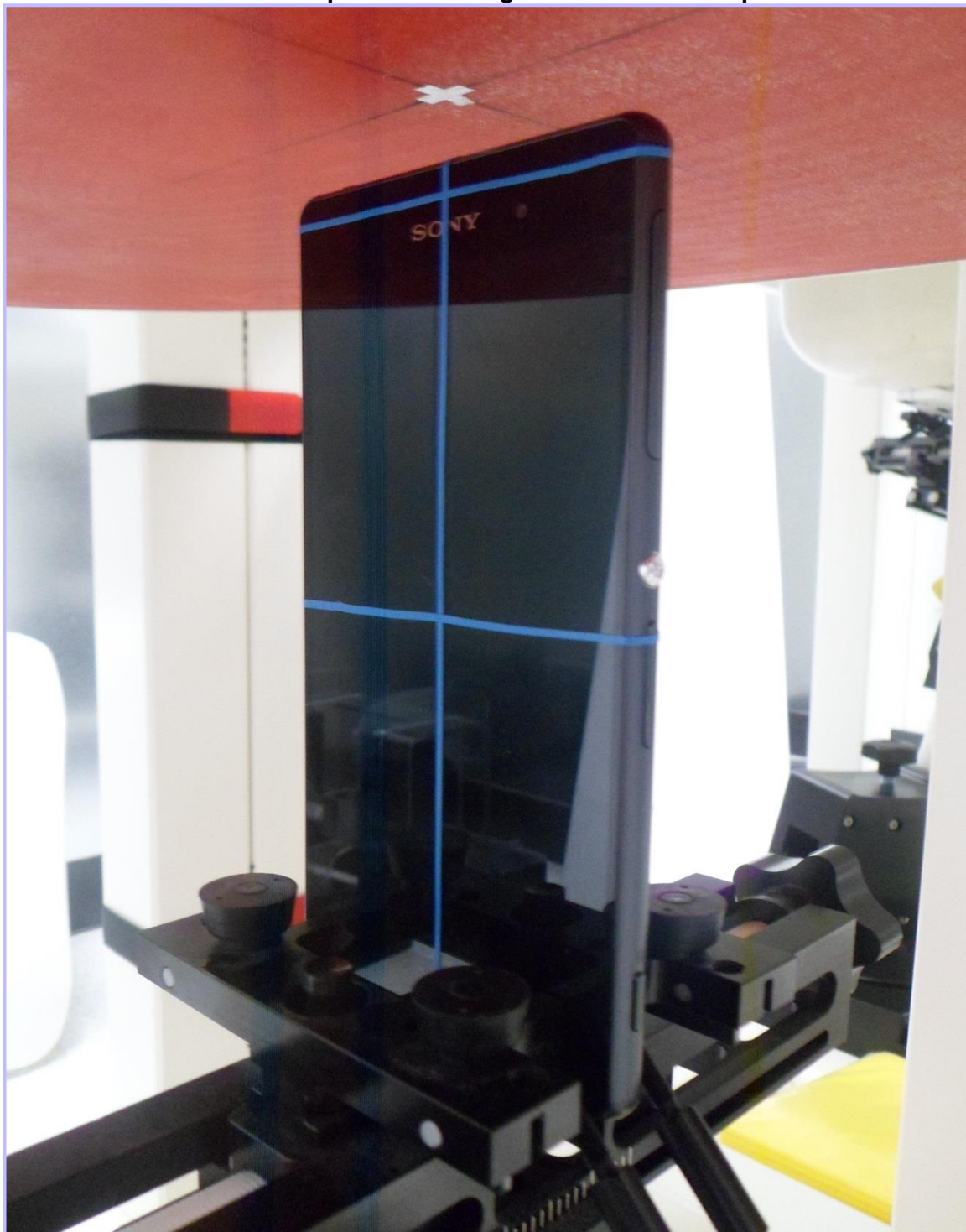
**PHT/ 10295122JD06/010: Left Hand Side of EUT Facing Phantom 10mm Separation**



**PHT/ 10295122JD06/011: Right Hand Side of EUT Facing Phantom 10mm Separation**



**PHT/ 10295122JD06/012: Top of EUT Facing Phantom 10mm Separation**



**PHT/ 10295122JD06/013: Bottom of EUT Facing Phantom 10mm Separation**



**PHT/ 10295122JD06/014: Front View of EUT**

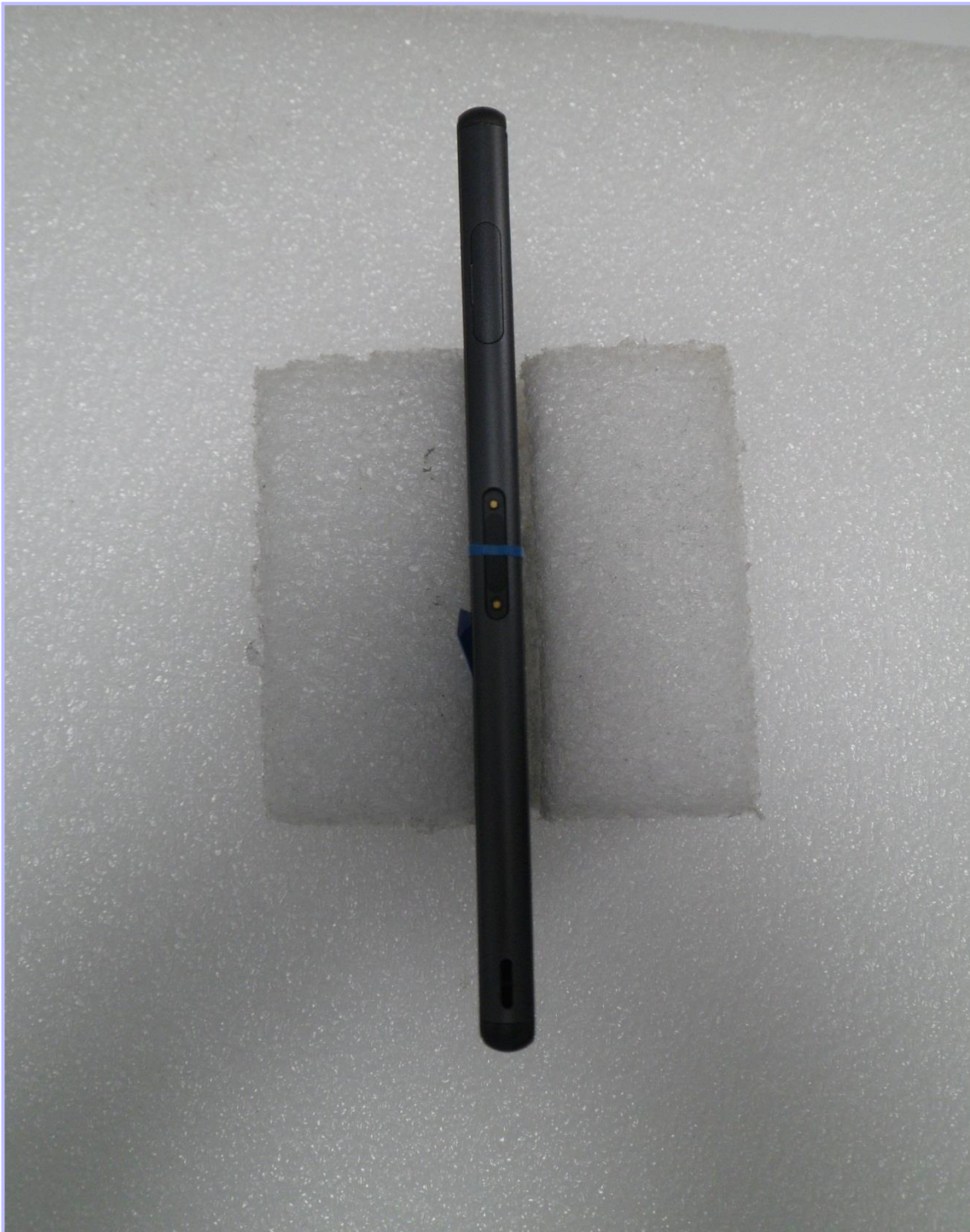


**PHT/ 10295122JD06/015: Back View of EUT**

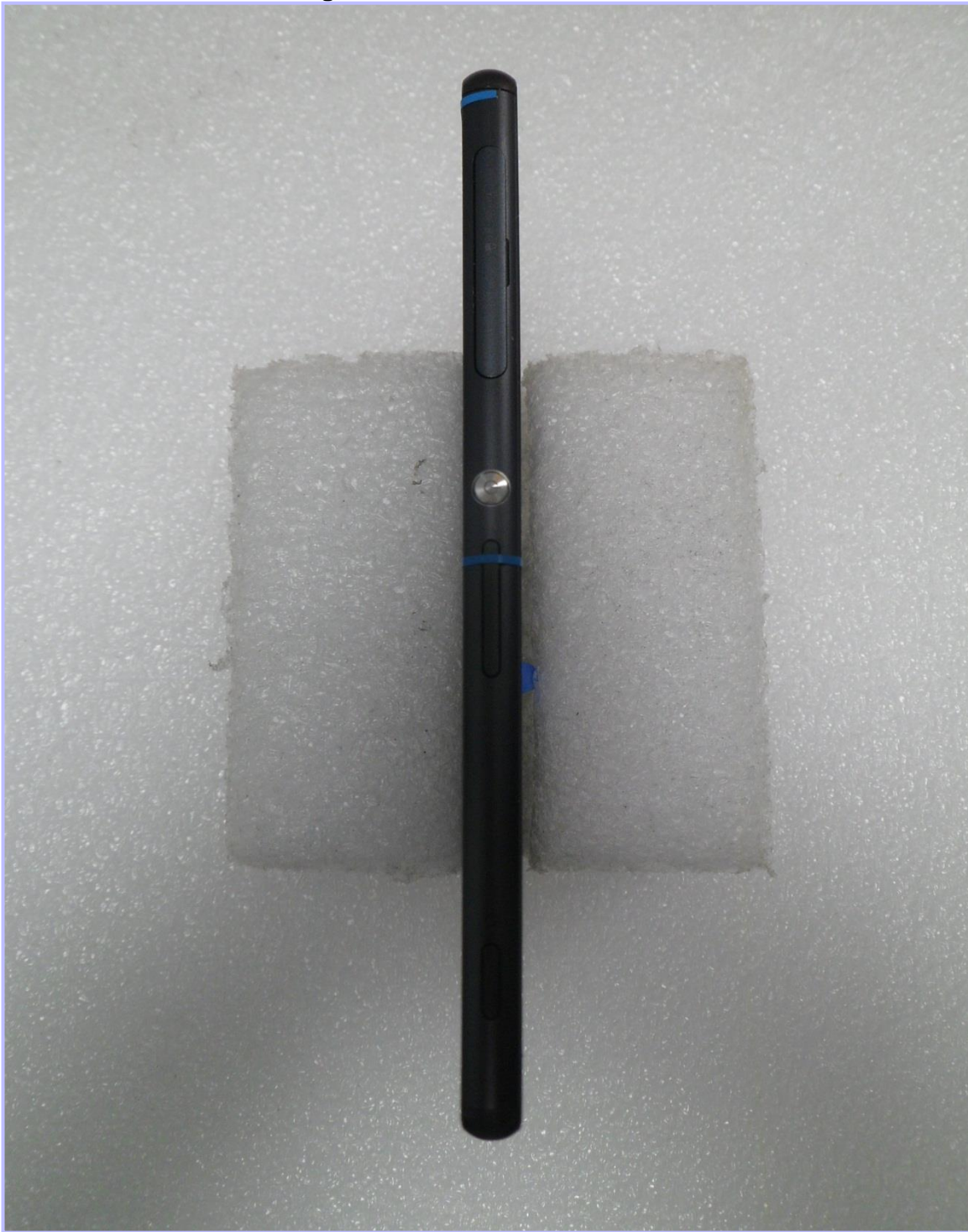




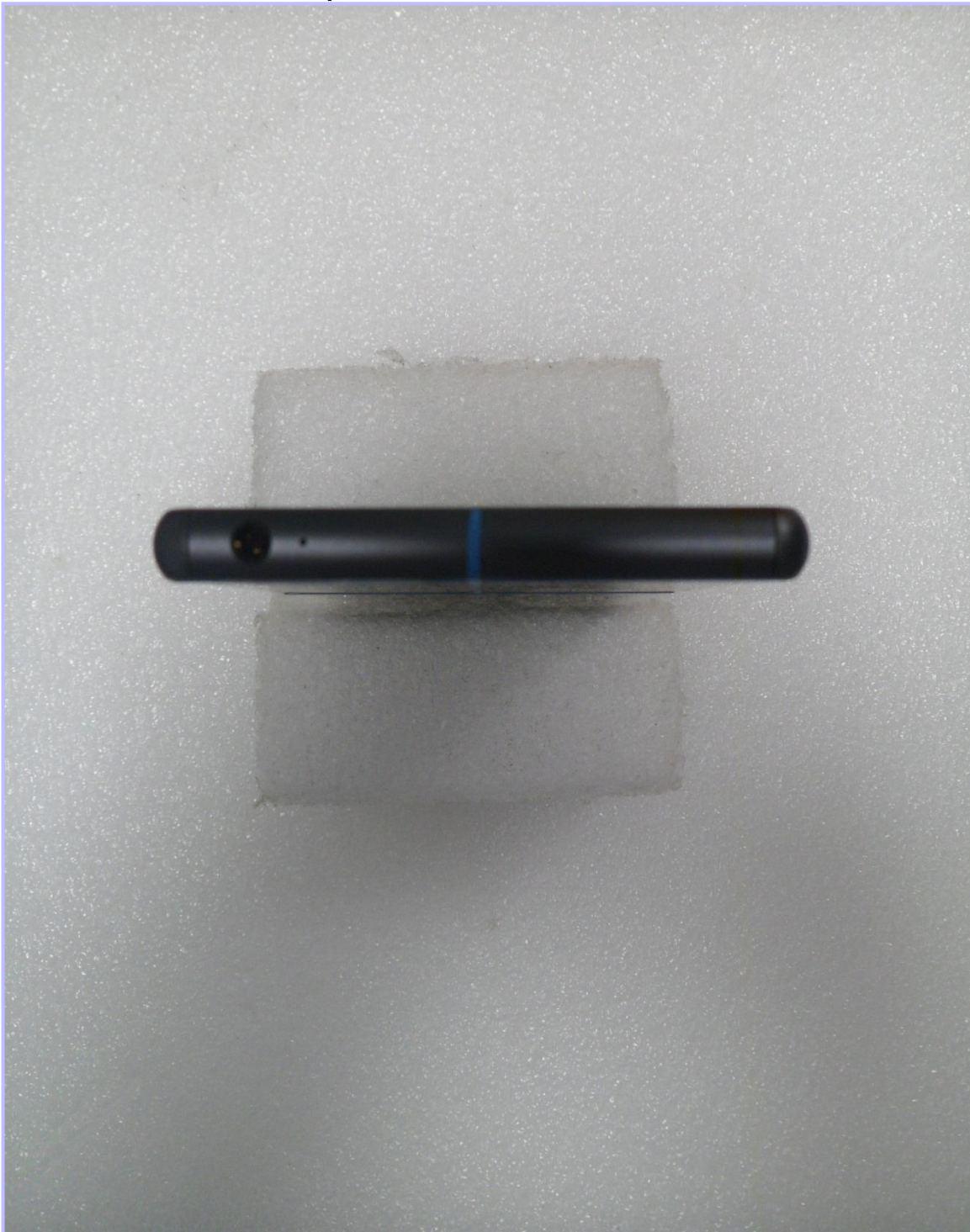
**PHT/ 10295122JD06/016: Left Hand Side View of EUT**



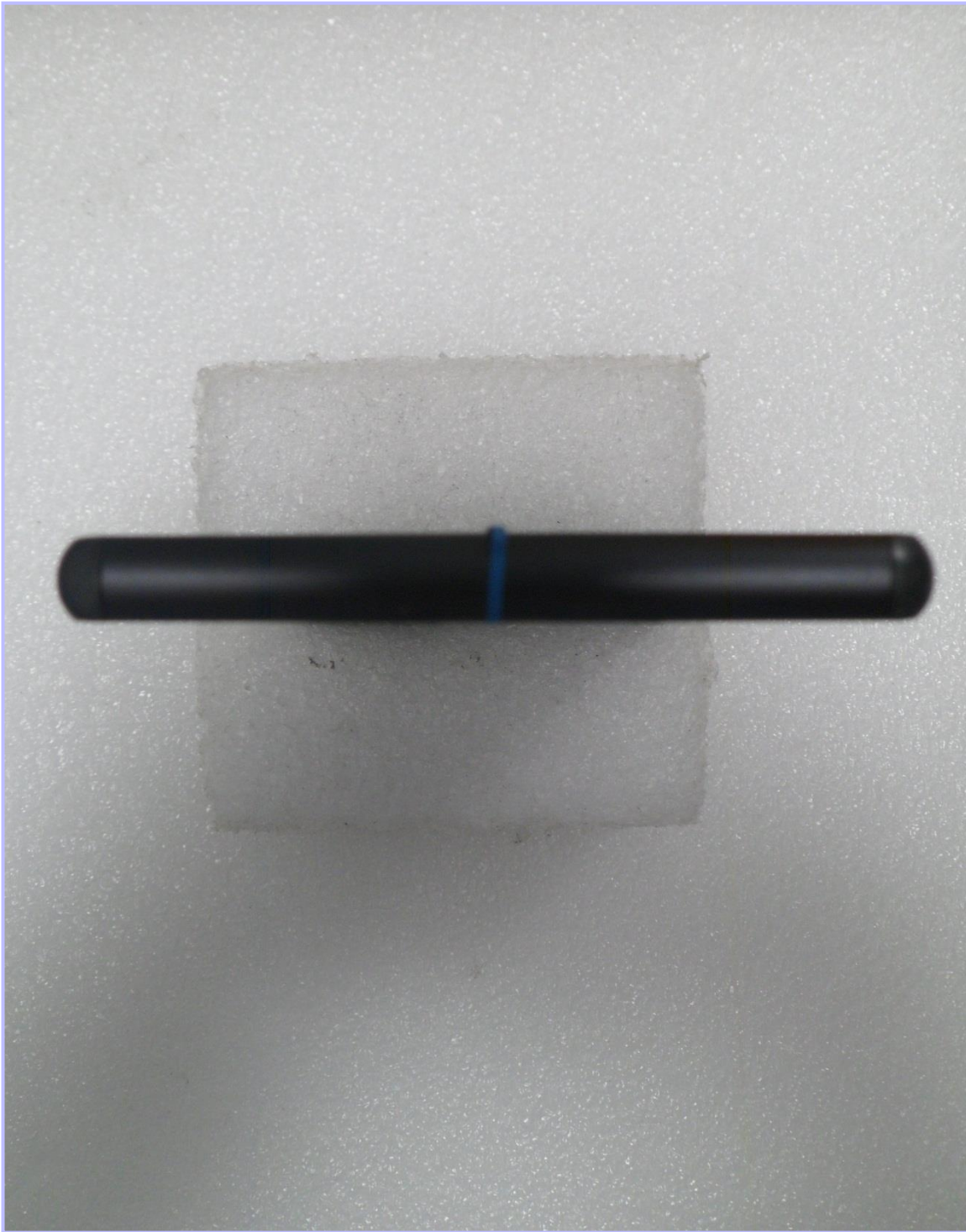
**PHT/ 10295122JD06/017: Right Hand Side View of EUT**



**PHT/ 10295122JD06/018: Top View of EUT**



**PHT/ 10295122JD06/019: Bottom View of EUT**



**PHT/ 10295122JD06/020: Internal View of Conducted Sample**



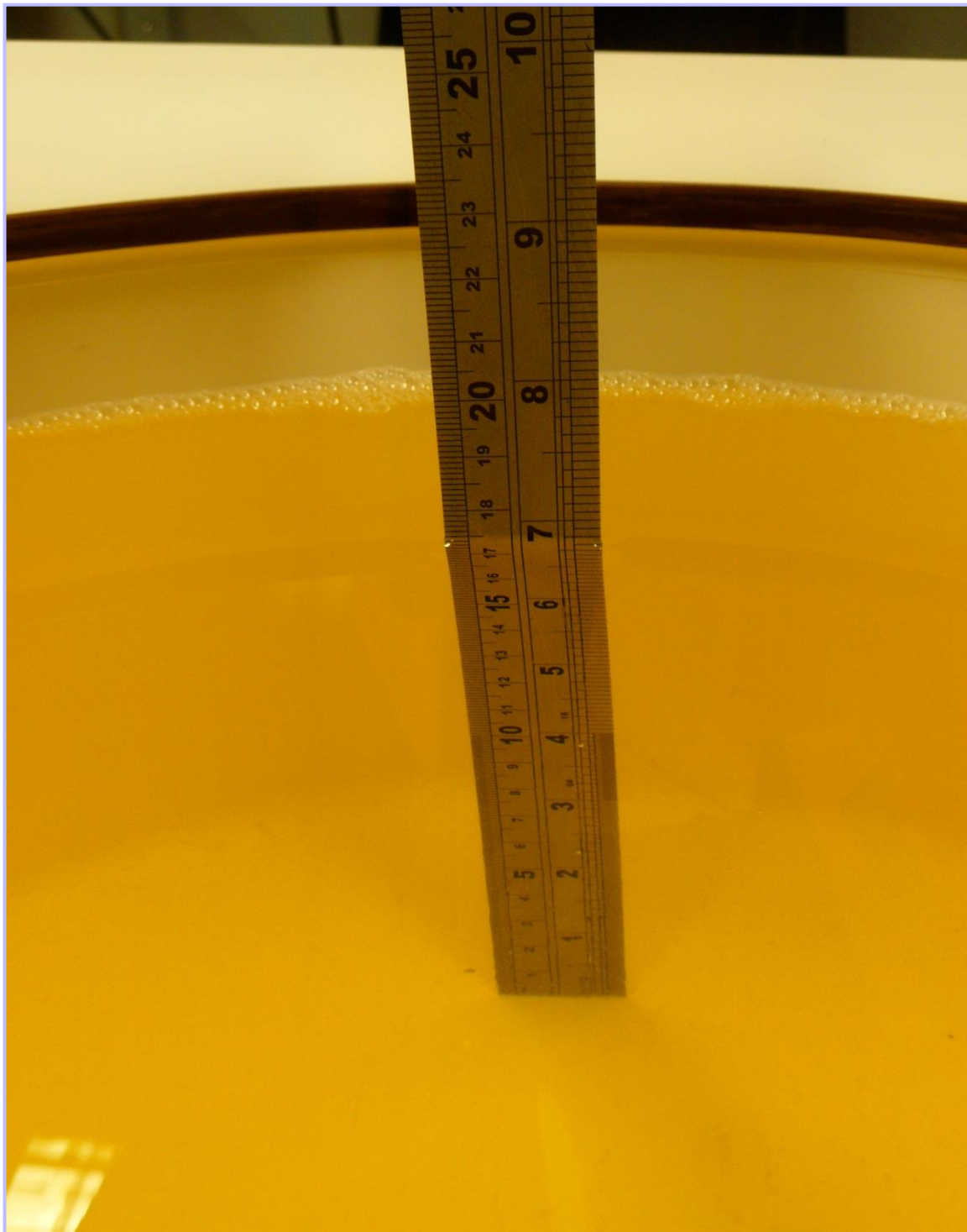
**Rex-T ETA AP1**  
SAR -GSM/UMTS/LTE  
Power (Conducted) #2

**Property of SONY MOBILE COMMUNICATIONS**  
**[WARNING] This Prototype is not for sale**

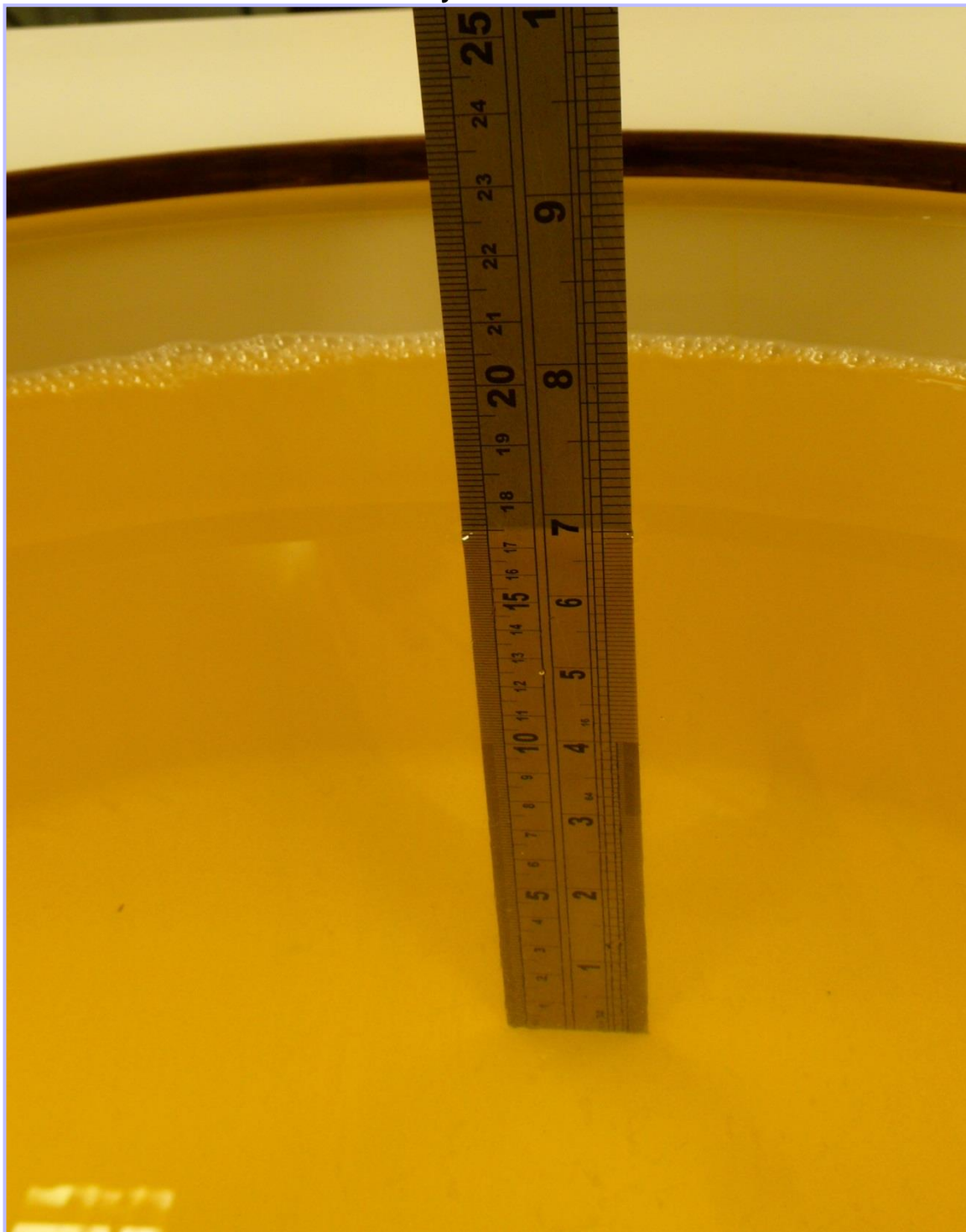
1. Do NOT peel off shielding stickers to cover Logo and model number
2. Do NOT use nor examine outside of SOMC w/o authorization
3. Do NOT upload nor disclose pictures or information of prototype
4. Do NOT show nor reveal prototype confidential information to others outside SOMC
5. Do NOT upload pictures taken with prototype (e.g. PICASA, Weibo, Blogs)
6. Do NOT download and run 3rd party benchmarking applications (e.g. NenaMark2, Antutu etc)
7. Do NOT give nor rent to others

Violation is subject to company policy  
Any violation should be reported to [incidents@sonymobile.com](mailto:incidents@sonymobile.com) Rev-B

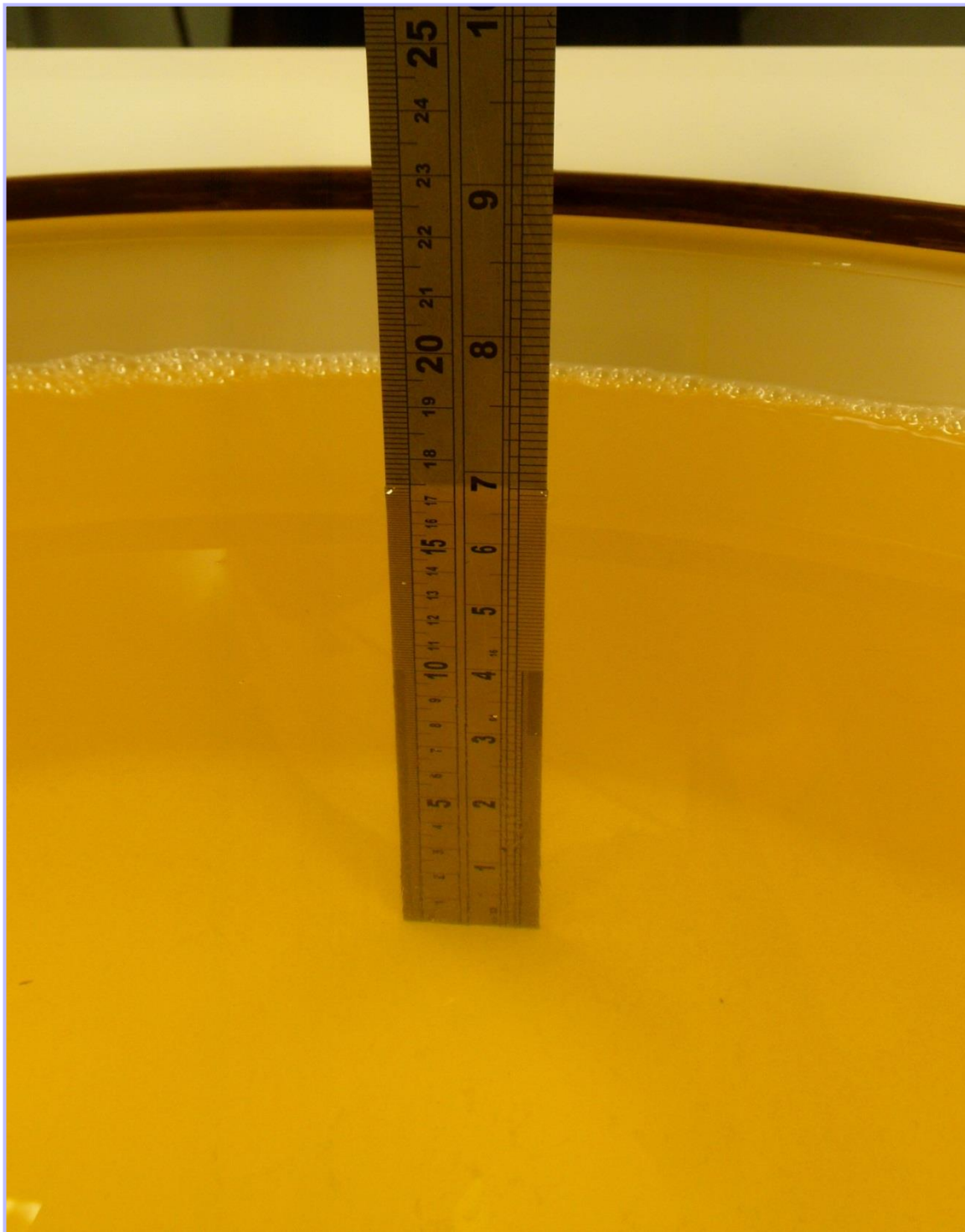
**PHT/ 10295122JD06/021: 750/900 Head Fluid Level**



**PHT/ 10295122JD06/022: 750/900 Body Fluid Level**

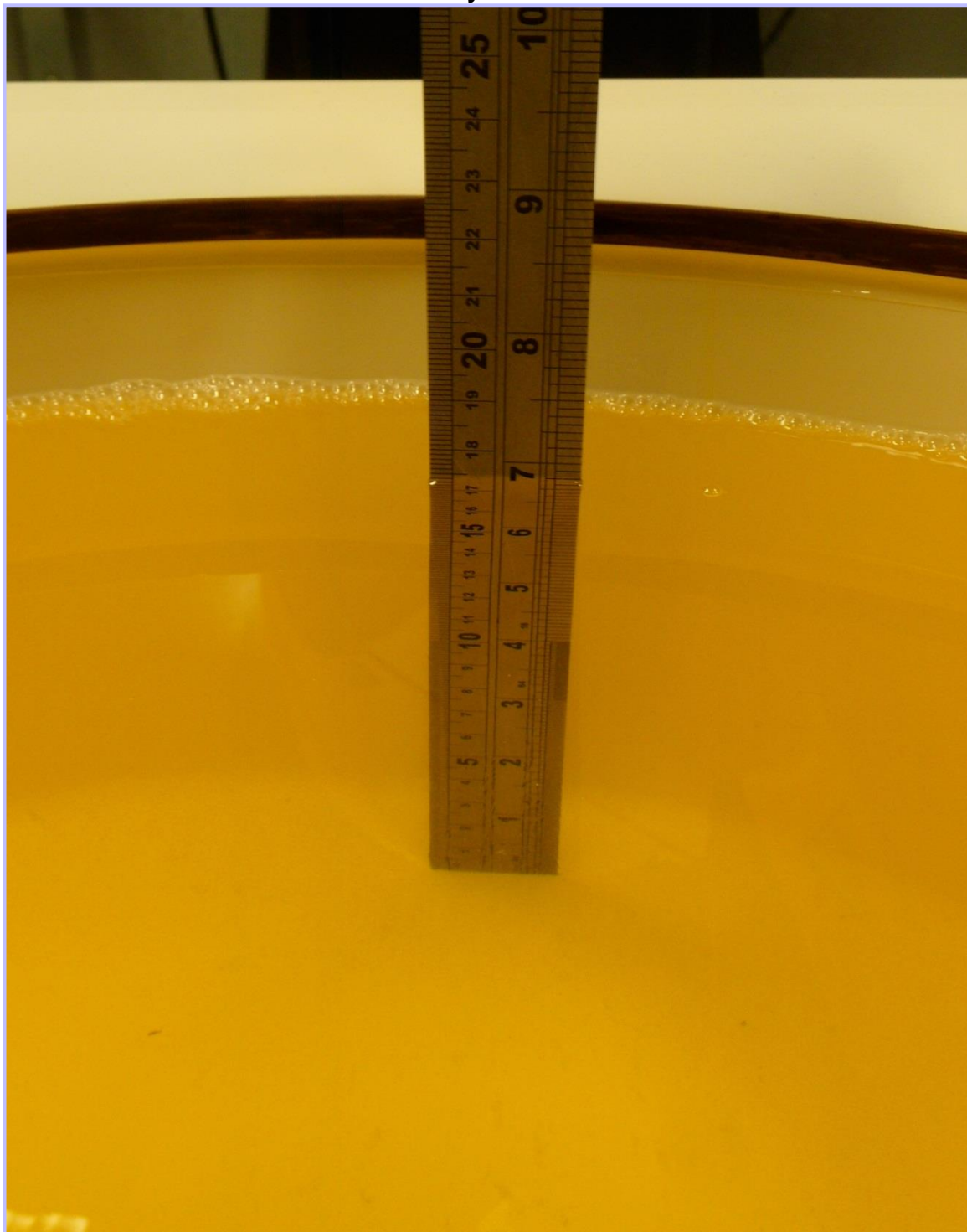


**PHT/ 10295122JD06/023: 1800/1900 Head Fluid Level**

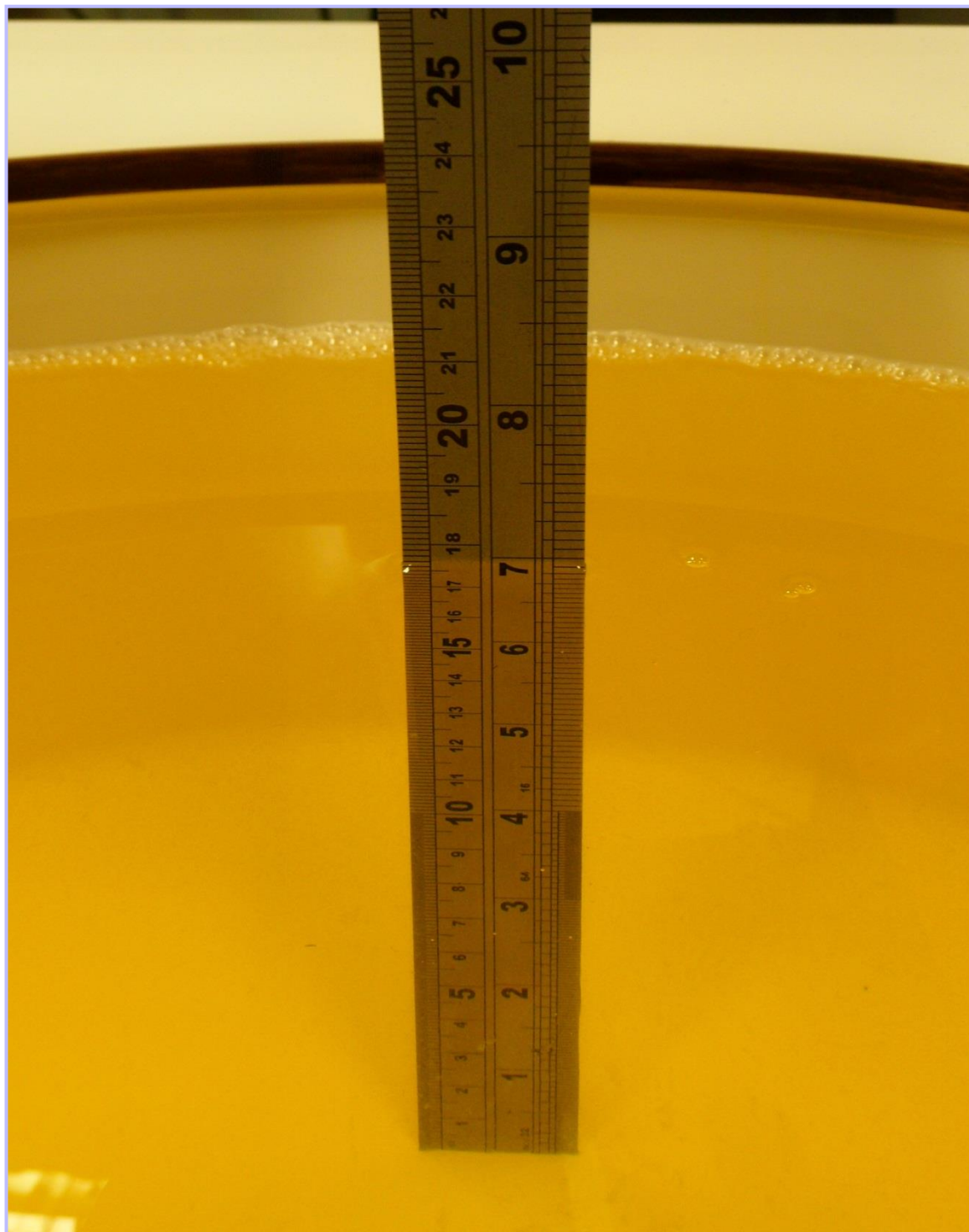




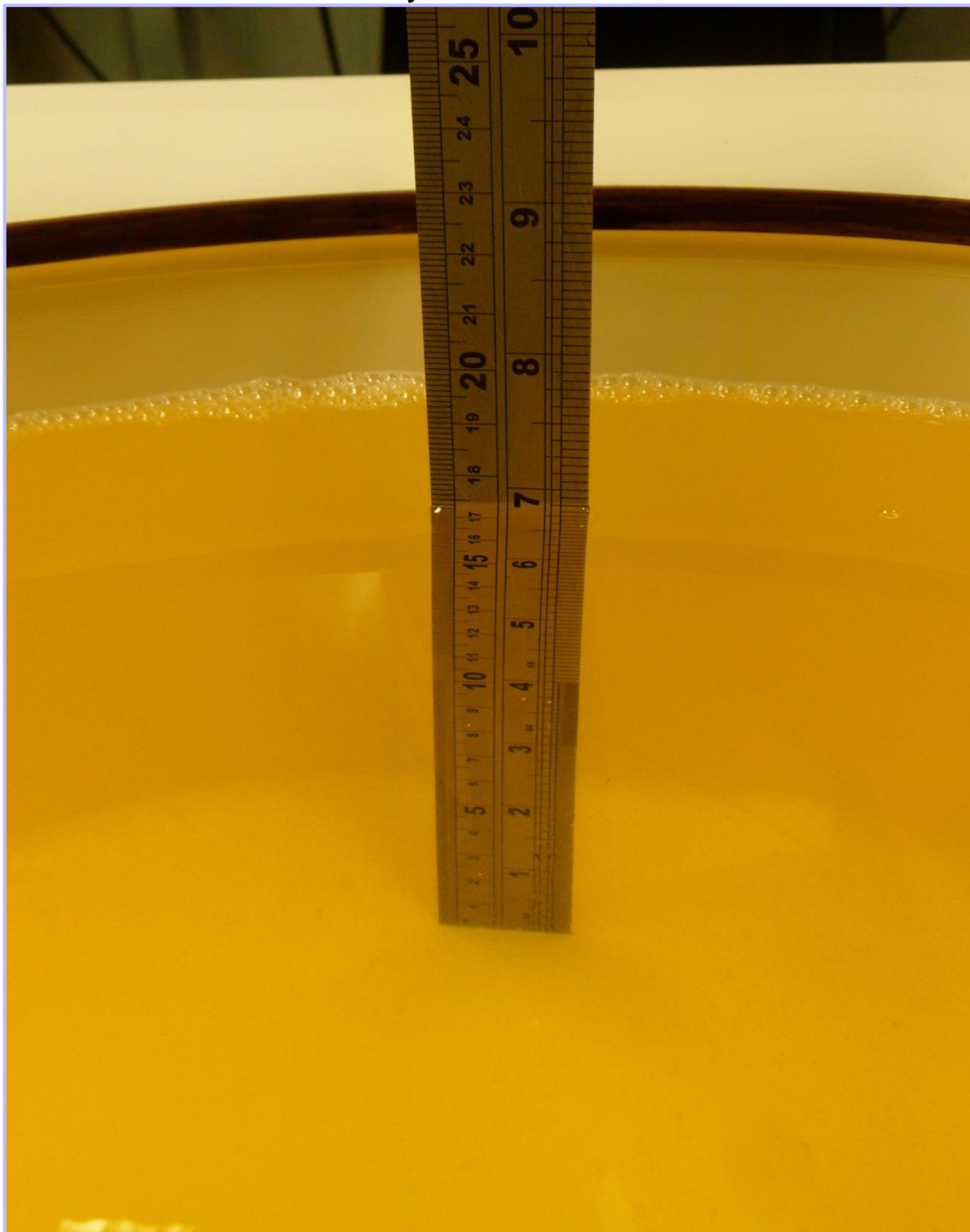
**PHT/ 10295122JD06/024: 1800/1900 Body Fluid Level**



**PHT/ 10295122JD06/025: 2450 Head Fluid Level**



**PHT/ 10295122JD06/026: 2450 Body Fluid Level**



**PHT/ 10295122JD06/027: 5GHz Head Fluid Level**



**PHT/ 10295122JD06/028: 5GHz Body Fluid Level**

