

Welcome

Important Information

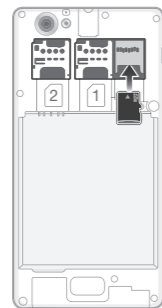
Before you use your device, please read the *Important Information* provided in your device or in the box.

Assembly

To remove the back cover



To insert the memory card



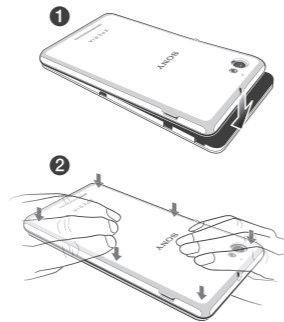
! The memory card may not be included at purchase in all markets.

To insert the SIM cards



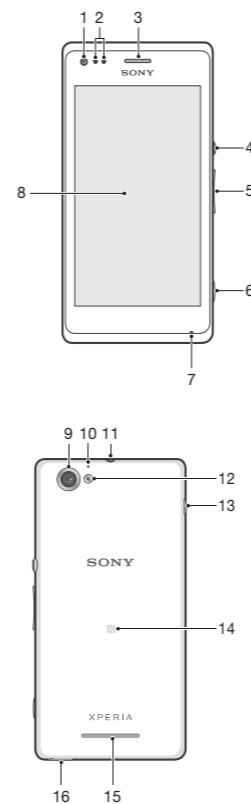
! Your device uses micro SIM cards only. For more information, contact your network operator.

To attach the back cover



Basics

Overview



- | | |
|---------------------------|--------------------------------|
| 1. Front camera lens | 9. Main camera lens |
| 2. Proximity/Light sensor | 10. Microphone 2 |
| 3. Ear speaker | 11. Headset jack |
| 4. Power key | 12. Camera light |
| 5. Volume/Zoom key | 13. Port for charger/USB cable |
| 6. Camera key | 14. NFC™ detection area |
| 7. Microphone 1 | 15. Speaker |
| 8. Touchscreen | 16. Strap hole |

Turning on the device

To turn on the device



- 1 Press and hold down the power key until the device vibrates.
- 2 Wait a while for the device to start.

Waking up the screen

To activate the screen

- Briefly press the power key .

To unlock the screen



- Drag up or drag down.

Setting up your device

What is Android™?



Android is your device's operating system. Since Android is developed by Google™, your device is preloaded with several Google™ services, such as Google Maps™ and Google™ web search. To use some of the services provided by Google™, you need a Google account.

Google™ account

With a Google™ account, you can use Gmail™ to send emails, Google Talk™ to chat with friends, and Google Play™ to download applications and games, music, movies and books.

To set up a Google™ account on your device

- 1 From your Home screen, tap .
- 2 Find and tap Settings > Add account > Google.
- 3 Follow the registration wizard to create a Google™ account, or sign in if you already have an account.

! You can also sign in to or create a Google™ account from the setup guide the first time you start your device. Or you can go online and create an account at www.google.com/accounts.

Basic settings

The first time you start your device, a setup guide explains basic device functions and helps you enter essential settings. You can also access the setup guide later.

To access the setup guide manually

- 1 From the Home screen, tap .
- 2 Tap Settings > Setup guide.

Transferring contacts to your new device

Transferring contacts to your new device can sometimes be complicated, but help is available.

You can transfer contacts from several device brands, including iPhone, Samsung, HTC and Nokia.

You need:

- An Internet-connected PC or Apple® Mac® computer
- A USB cable for your old device
- A USB cable for your new Android™ device
- Your old device and new Android™ device

Get started transferring your contacts

If you are a PC user, use the PC Companion program to transfer your contacts. It's free, and the installation files are already saved on your new device. PC Companion also offers a range of other features, including help to update your device software. For Apple® Mac® computer users, the Sony™ Bridge for Mac application is available to help you transfer your contacts. It's also free and downloadable from www.sonymobile.com/support.

To install PC Companion

- 1 **New device:** Turn on your new Android™ device and connect it to a PC using a USB cable.
- 2 **New device:** Tap Install to install PC Companion on the PC.
- 3 **Computer:** If a popup window appears to notify you about available PC software, select *Run Startme.exe*.
- 4 **Computer:** Click *Install* to start the installation and then follow the instructions to complete the installation.

To transfer contacts to your new device using PC Companion

- 1 Make sure that PC Companion is installed on your PC.
- 2 Open the PC Companion program on the PC, then click *Contacts Setup* and follow the instructions to transfer your contacts.

To install Sony™ Bridge for Mac

- 1 **Computer:** Go to www.sonymobile.com/support, then search for and download the Sony™ Bridge for Mac application to a folder on your Apple® Mac® computer.
- 2 **Computer:** Locate and double-click the *Sony Bridge for Mac.dmg* file in the folder to start the installation.
- 3 **Computer:** Follow the instructions on your Apple® Mac® computer to complete the installation.

To transfer contacts to your new device using Sony™ Bridge for Mac

- 1 Make sure the Sony™ Bridge for Mac application is installed on your Apple® Mac® computer.
- 2 Open the Sony™ Bridge for Mac application on your Apple® Mac® computer.
- 3 Double-click the Sony™ Bridge for Mac icon in the Applications folder, then follow the instructions to transfer your contacts.

Finding your way

Home screen

The Home screen is your gateway to the main features on your device. You can customise your Home screen with widgets, shortcuts, folders, themes, wallpaper and other items.

The Home screen extends beyond the regular screen display width, so you need to flick left or right to view content in all of the Home screen's panes.



The items in the bar at the bottom of the screen are always available for quick access.

To go to the Home screen

- Press

To browse the Home screen

- Flick right or left.

Widgets

Widgets are small applications that you can use directly on your Home screen. For example, the Music player widget allows you to start playing music directly. Some widgets are resizable, so you can expand them to view more content or shrink them to save space on your Home screen.

Application screen

The Application screen, which you open from your Home screen, contains the applications that come pre-installed on your device as well as the applications you download. The Application screen extends beyond the regular screen width, so you need to flick left and right to view all content.

To open the Application screen



- From your Home screen, tap

To open an application

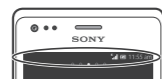
- From your Home screen or the Application screen, tap the application.

Applications

An application is a phone program that helps you perform a task. For example, there are applications to make calls, take photos and download more applications.

Status and notifications

The status bar at the top of your screen shows what's going on in your device. For example, new message and calendar notifications appear here.



Checking notifications and ongoing activities

You can drag down the status bar to open the Notification panel and get more information. For example, you can use the panel to open a new message or view a calendar event. You can also open some applications that run in the background, such as the music player.

To open the Notification panel



- Drag the status bar downwards.

Settings menu

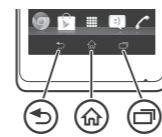
View and change settings for your device from the Settings menu.

To access your device settings

- 1 From your Home screen, tap
- 2 Tap Settings.

You can also drag the status bar downwards on the Home screen and tap to access your device settings.

Using the keys



- Back
 - Go back to the previous screen
 - Close the on-screen keypad, a dialog box, an options menu, or the Notification panel
- Home
 - Go to the Home screen
- Task
 - Tap to open a window showing your most recently used applications and a small apps bar

More basics

Calling

To make a call by dialling

- 1 From your Home screen, tap
- 2 Find and tap Phone.
- 3 Enter the number of the recipient and tap Call. To delete a number, tap

To end a call

- Tap

To answer a call



- Drag to the right across the screen.

Multimedia and text messaging

To create and send a message

- 1 From your Home screen, tap , then find and tap
- 2 Tap
- 3 Tap , then select the desired recipients from the Contacts list. If the recipient is not listed as a contact, enter the contact's number manually and tap
- 4 When you are finished adding recipients, tap Done.
- 5 Tap Write message and enter your message text.
- 6 If you want to add a media file, tap and select an option.
- 7 To send the message, tap Send.

Troubleshooting

The device does not recognise my wired headset

- Make sure the wired headset that you are using complies to the CTIA standard. Your device supports the CTIA standard, and may not be fully compatible with other standards such as OMTP.
- If you have a wireless headset that is compatible with your device, try using that instead.

Legal information

Sony C2004/C2005

Google Play™ is not available in all countries. Some of the services and features described in this Startup guide are not supported in all countries/regions or by all networks and/or service providers in all areas. Without limitation, this applies to the GSM International Emergency Number 112. Please contact your network operator or service provider to determine availability of any specific service or feature and whether additional access or usage fees apply.

This Startup guide is published by Sony Mobile Communications AB or its local affiliated company, without any warranty. Improvements and changes to this Startup guide necessitated by typographical errors, inaccuracies of current information, or improvements to programs and/or equipment, may be made by Sony Mobile Communications AB at any time and without notice. Such changes will, however, be incorporated into new editions of this Startup guide.

All rights reserved.

©Sony Mobile Communications AB, 2012

Publication number: 1274-6343.1

Your mobile phone has the capability to download, store and forward additional content, e.g. ringtones. Your mobile phone supports dual standby with two different networks. You can not make or answer calls on both networks at the same time. The use of such content may be restricted or prohibited by rights of third parties, including but not limited to restriction under applicable copyright laws. You, and not Sony, are entirely responsible for additional content that you download to or forward from your mobile phone. Prior to your use of any additional content, please verify that your intended use is properly licensed or is otherwise authorized. Sony Mobile does not guarantee the accuracy, integrity or quality of any additional content or any other third party content. Under no circumstances will Sony be liable in any way for your improper use of additional content or other third party content.

This Startup guide may reference services or applications provided by third parties. Use of such programming or services may require separate registration with the third party provider and may be subject to additional terms of use. For applications accessed on or through a third-party website, please review such websites' terms of use and applicable privacy policy in advance. Sony Mobile does not warrant or guarantee the availability or performance of any third-party websites or offered services.

All product and company names mentioned herein are the trademarks or registered trademarks of their respective owners. Any rights not expressly granted herein are reserved. All other trademarks are property of their respective owners. Visit www.sonymobile.com for more information.

All illustrations are for illustration only and may not accurately depict the actual phone.

This product is protected by certain intellectual property rights of Microsoft. Use or distribution of such technology outside of this product is prohibited without a license from Microsoft.

Our support to you – Xperia™ Care



User guide

A User guide for your device is available at www.sonymobile.com/support.



Support in your device

Get user support directly in your device using the Support application.

To access the Support application

- 1 From your Application screen, find and tap
- 2 Find and tap the required support item.



Support on the web

Visit www.sonymobile.com/support to access a range of support and get the most from your device.



Customer support

Customer support – if all else fails. Access the relevant support number at www.sonymobile.com by clicking the Contact us link at the bottom of the page.

Learn more

Learn more about how we can support you with Xperia™ Care at www.sonymobile.com/support.