

Appendix 4. Photographs

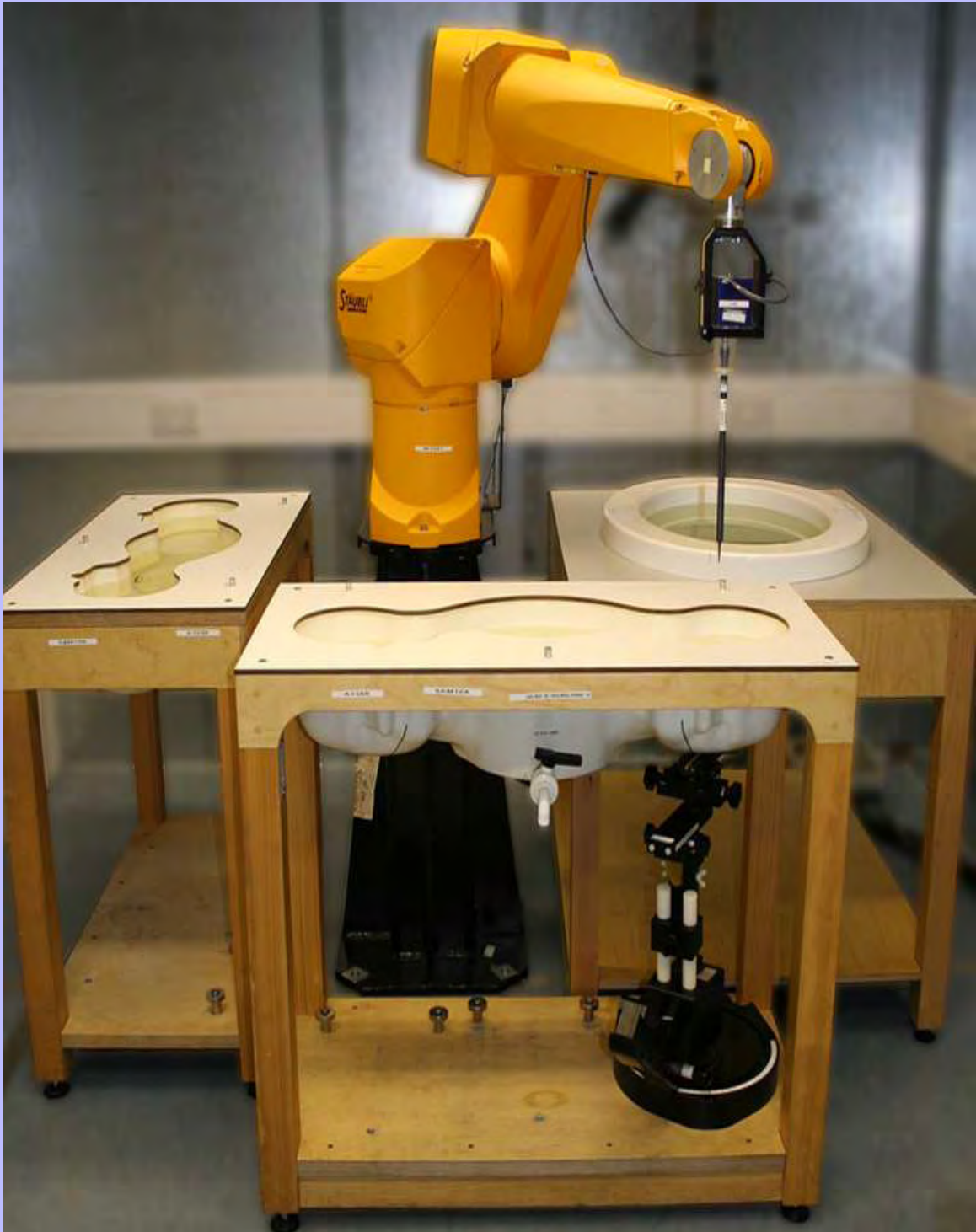
This appendix contains the following photographs:

Photo Reference No.	Title
PHT/92490/001	Test configuration for the measurement of Specific Absorption Rate (SAR)
PHT/92490/002	Touch Left
PHT/92490/003	Touch Left Antenna Extended
PHT/92490/004	Tilt Left
PHT/92490/005	Touch Right
PHT/92490/006	Touch Right Antenna Extended
PHT/92490/007	Tilt Right
PHT/92490/008	Tilt Right Antenna Extended
PHT/92490/009	Front of EUT Facing Phantom at 10mm
PHT/92490/010	Front of EUT Facing Phantom Antenna Extended at 10mm
PHT/92490/011	Front of EUT Facing Phantom at 15mm
PHT/92490/012	Front of EUT Facing Phantom Antenna Extended at 15mm
PHT/92490/013	Back of EUT Facing Phantom at 10mm
PHT/92490/014	Back of EUT Facing Phantom Antenna Extended at 10mm
PHT/92490/015	Back of EUT Facing Phantom at 15mm
PHT/92490/016	Back of EUT Facing Phantom Antenna Extended at 15mm
PHT/92490/017	Left Hand Side of EUT Facing Phantom
PHT/92490/018	Right Hand Side of EUT Facing Phantom
PHT/92490/019	Top of EUT Facing Phantom
PHT/92490/020	Bottom of EUT Facing Phantom
PHT/92490/021	Front View of EUT
PHT/92490/022	Front View of EUT Antenna Extended
PHT/92490/023	Back View of EUT
PHT/92490/024	Back View of EUT Antenna Extended
PHT/92490/025	Left Hand View Side of EUT
PHT/92490/026	Right Hand View Side of EUT
PHT/92490/027	Top View of EUT
PHT/92490/028	Bottom View of EUT
PHT/92490/029	Internal View of WWAN Radiated Sample (CB5123RQDT)
PHT/92490/030	Internal View of WWAN Radiated Sample (CB5123SGAM)
PHT/92490/031	Internal View of WWAN Conducted Sample (CB5123SGR5)
PHT/92490/032	Internal View of WLAN Radiated Sample (CB5123RQ5Y)
PHT/92490/033	Internal View of WLAN Radiated Sample (CB5123RQ7B)
PHT/92490/034	Internal View of WLAN Conducted Sample (CB5123SGPY)
PHT/92490/035	Dummy Battery

Photographs (Continued):

Photo Reference No.	Title
PHT/92490/036	Front View of Battery
PHT/92490/037	Back View of Battery
PHT/92490/038	900 MHz Head Fluid Level
PHT/92490/039	900 MHz Body Fluid Level
PHT/92490/040	1900 MHz Head Fluid Level
PHT/92490/041	1900 MHz Body Fluid Level
PHT/92490/042	2450 MHz Head Fluid Level
PHT/92490/043	2450 MHz Body Fluid Level
PHT/92490/044	5GHz Head Fluid Level
PHT/92490/045	5GHz Body Fluid Level

PHT/92490/001: Test configuration for the measurement of Specific Absorption Rate (SAR)



PHT/92490/002: Touch Left



PHT/92490/003: Touch Left Antenna Extended



PHT/92490/004: Tilt Left



PHT/92490/005: Touch Right



PHT/92490/006: Touch Right Antenna Extended



PHT/92490/007: Tilt Right



PHT/92490/008: Tilt Right Antenna Extended



PHT/92490/009: Front of EUT Facing Phantom at 10mm



PHT/92490/010: Front of EUT Facing Phantom Antenna Extended at 10mm



PHT/92490/011: Front of EUT Facing Phantom at 15mm



PHT/92490/012: Front of EUT Facing Phantom Antenna Extended at 15mm



PHT/92490/013: Back of EUT Facing Phantom at 10mm



PHT/92490/014: Back of EUT Facing Phantom Antenna Extended at 10mm



PHT/92490/015: Back of EUT Facing Phantom at 15mm



PHT/92490/016: Back of EUT Facing Phantom Antenna Extended at 15mm



PHT/92490/017: Left Hand Side of EUT Facing Phantom



PHT/92490/018: Right Hand Side of EUT Facing Phantom



PHT/92490/019: Top of EUT Facing Phantom



PHT/92490/020: Bottom of EUT Facing Phantom



PHT/92490/021: Front View of EUT



PHT/92490/022: Front View of EUT Antenna Extended



PHT/92490/023: Back View of EUT



PHT/92490/024: Back View of EUT Antenna Extended



PHT/92490/025: Left Hand View Side of EUT



PHT/92490/026: Right Hand View Side of EUT



PHT/92490/027: Top View of EUT



PHT/92490/028: Bottom View of EUT



PHT/92490/029: Internal View of WWAN Radiated Sample (CB5123RQDT)



PHT/92490/030: Internal View of WWAN Radiated Sample (CB5123GAM)



PHT/92490/031: Internal View of WWAN Conducted Sample (CB5123SGRS)



PHT/92490/032: Internal View of WLAN Radiated Sample (CB5123RQ5Y)



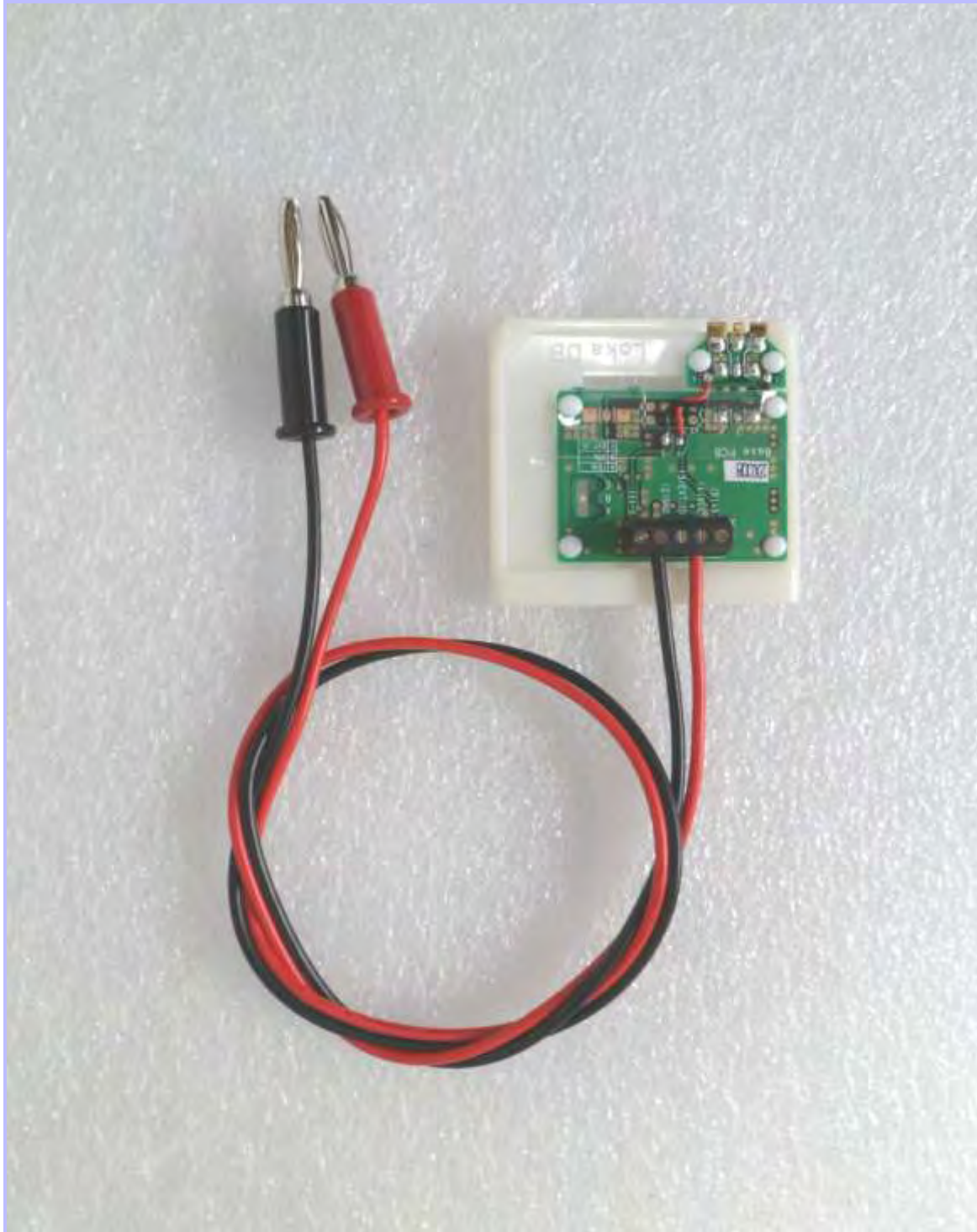
PHT/92490/033: Internal View of WLAN Radiated Sample (CB5123RQ7B)



PHT/92490/034: Internal View of WLAN Conducted Sample (CB5123SGPY)



PHT/92490/035: Dummy Battery



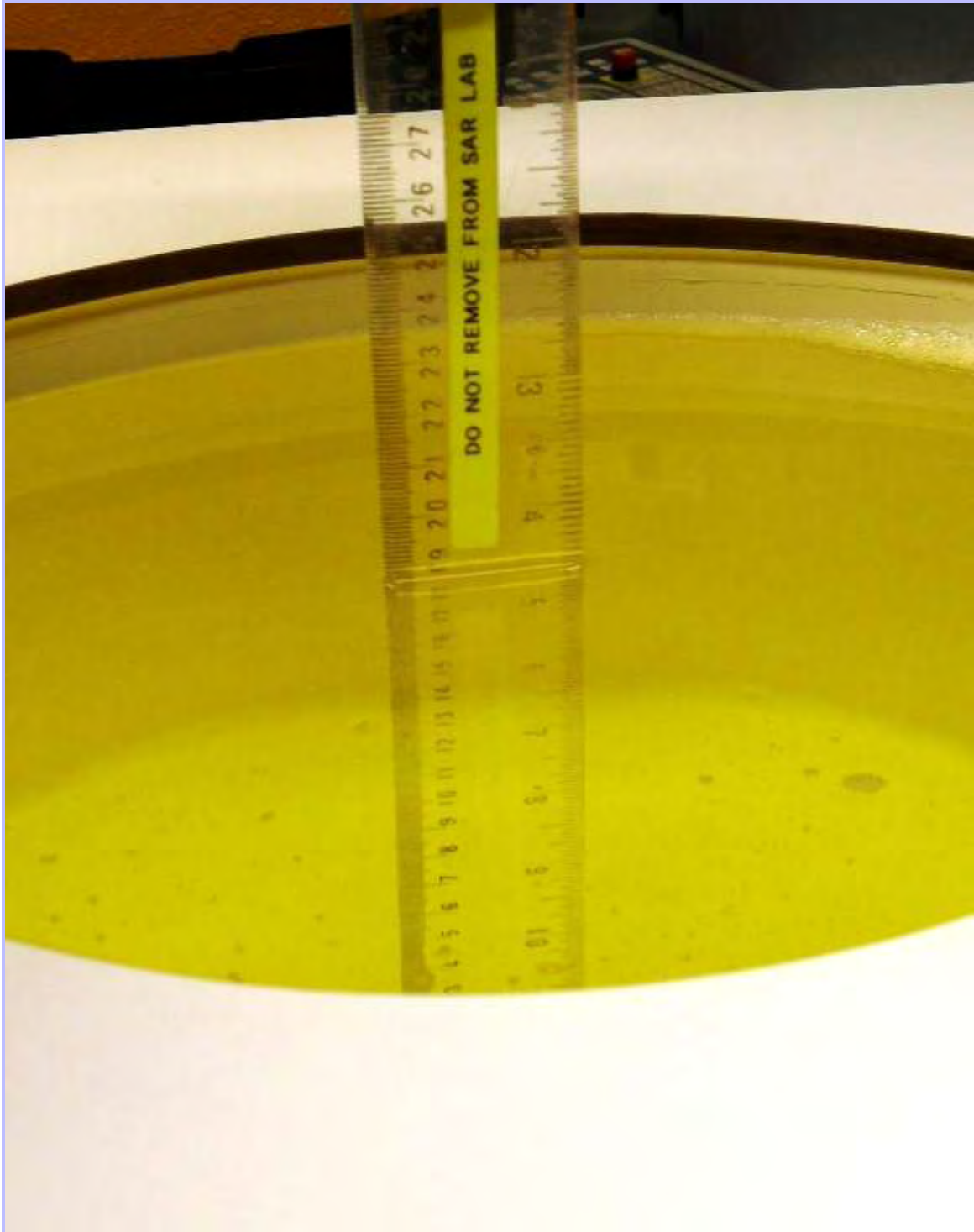
PHT/92490/036: Front View of Battery



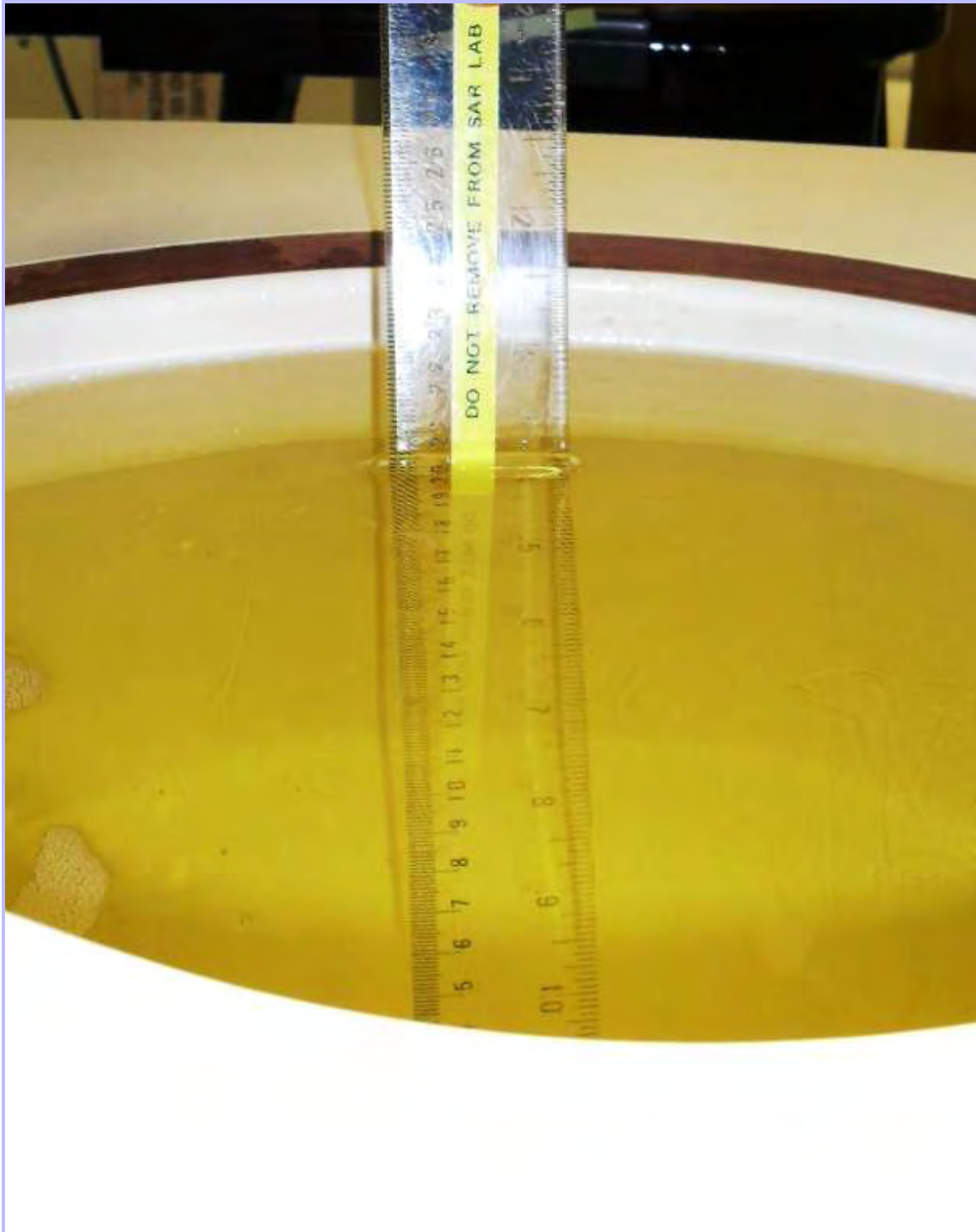
PHT/92490/037: Back View of Battery



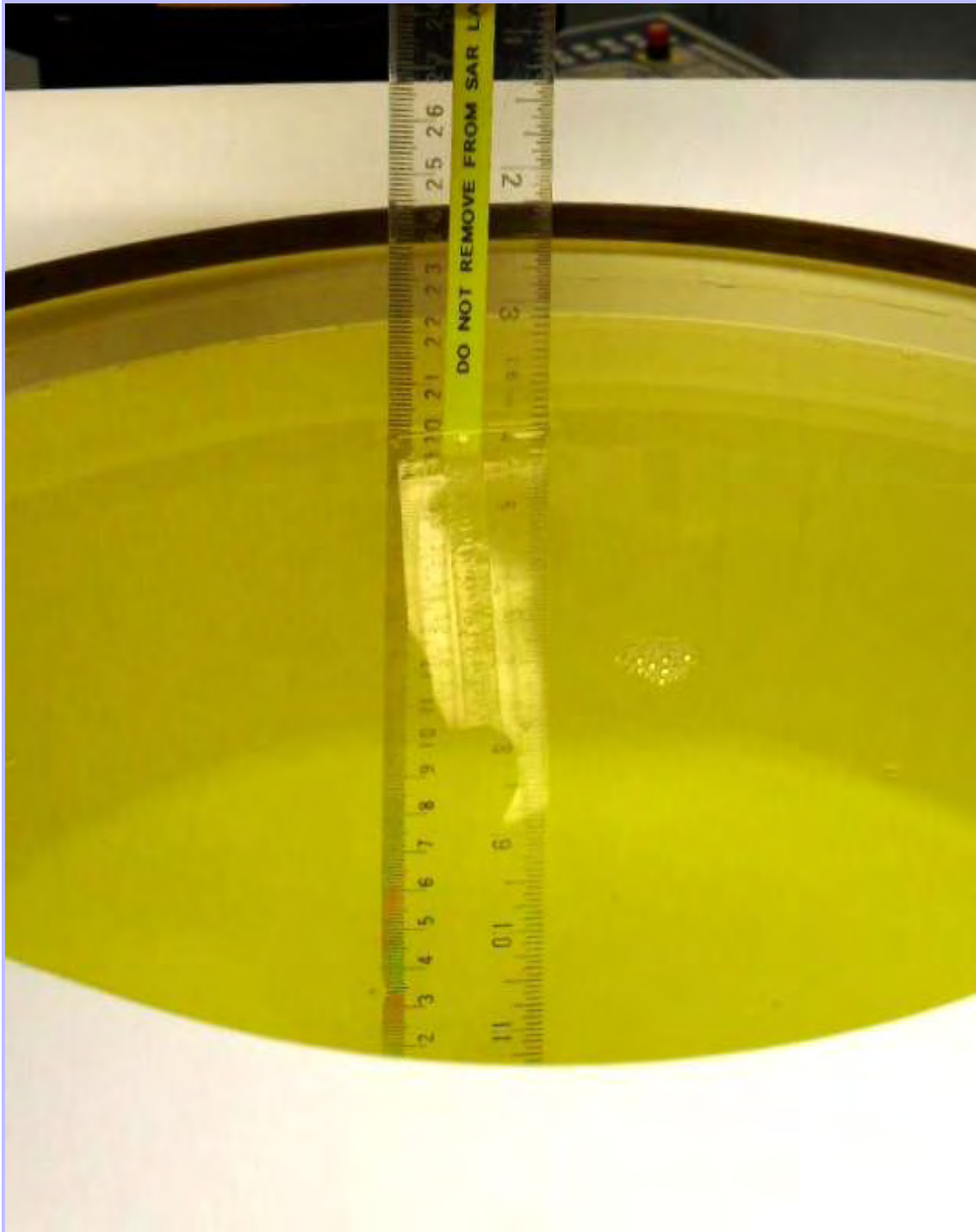
PHT/92490/038: 900 MHz Head Fluid Level



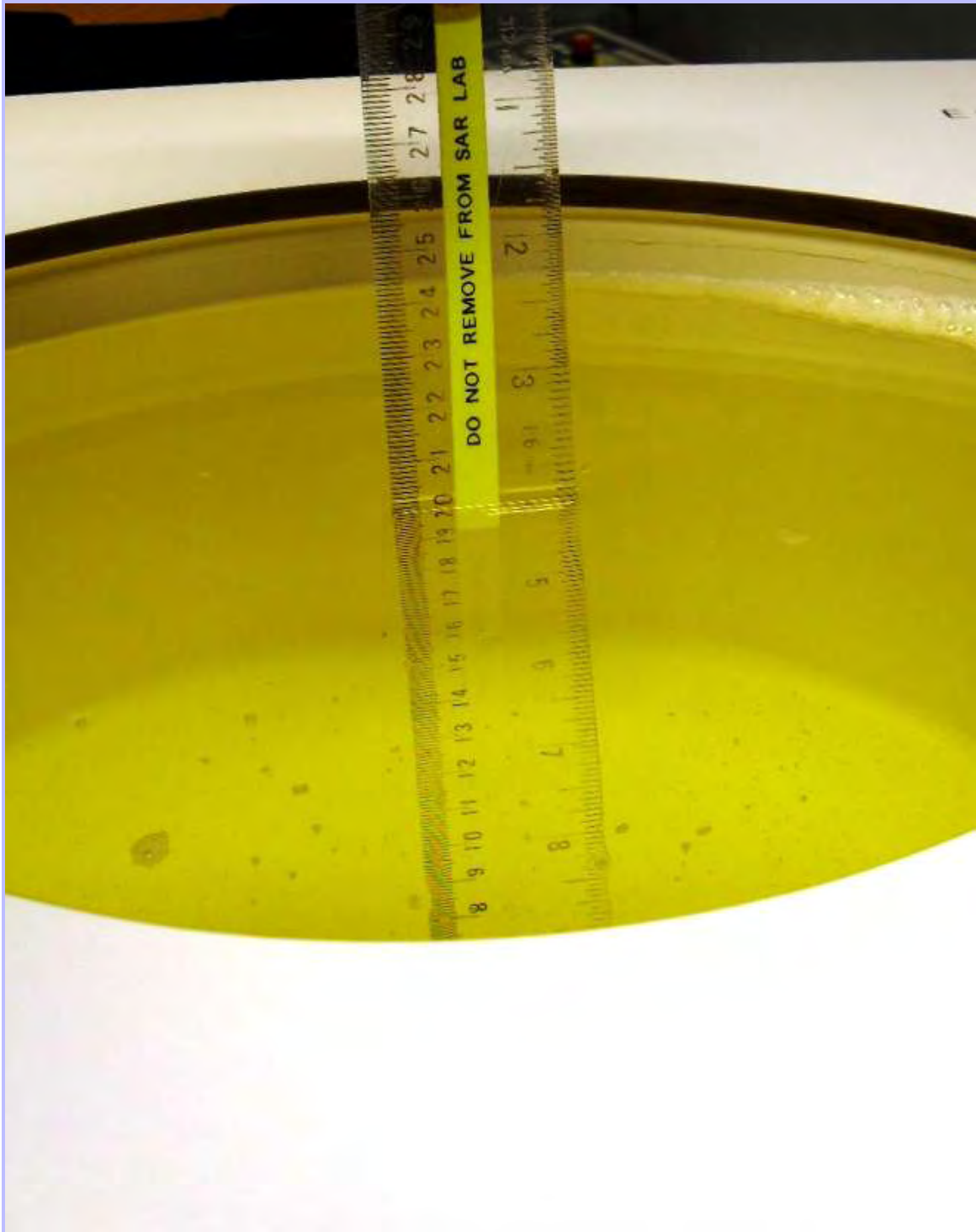
PHT/92490/039: 900 MHz Body Fluid Level



PHT/92490/040: 1900 MHz Head Fluid Level



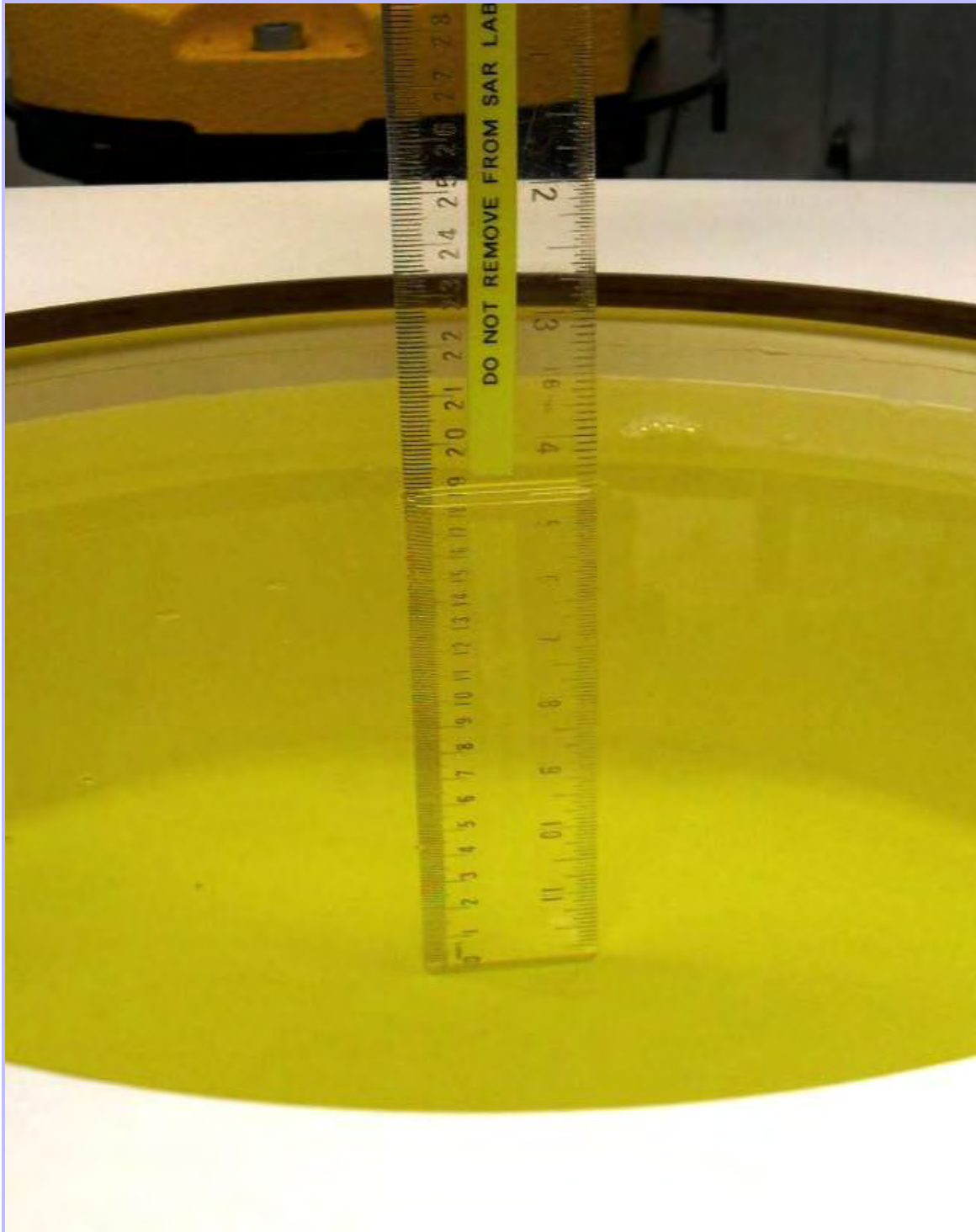
PHT/92490/041: 1900 MHz Body Fluid Level



PHT/92490/042: 2450 MHz Head Fluid Level



PHT/92490/043: 2450 MHz Body Fluid Level



PHT/92490/044: 5GHz Head Fluid Level



PHT/92490/045: 5GHz Body Fluid Level

