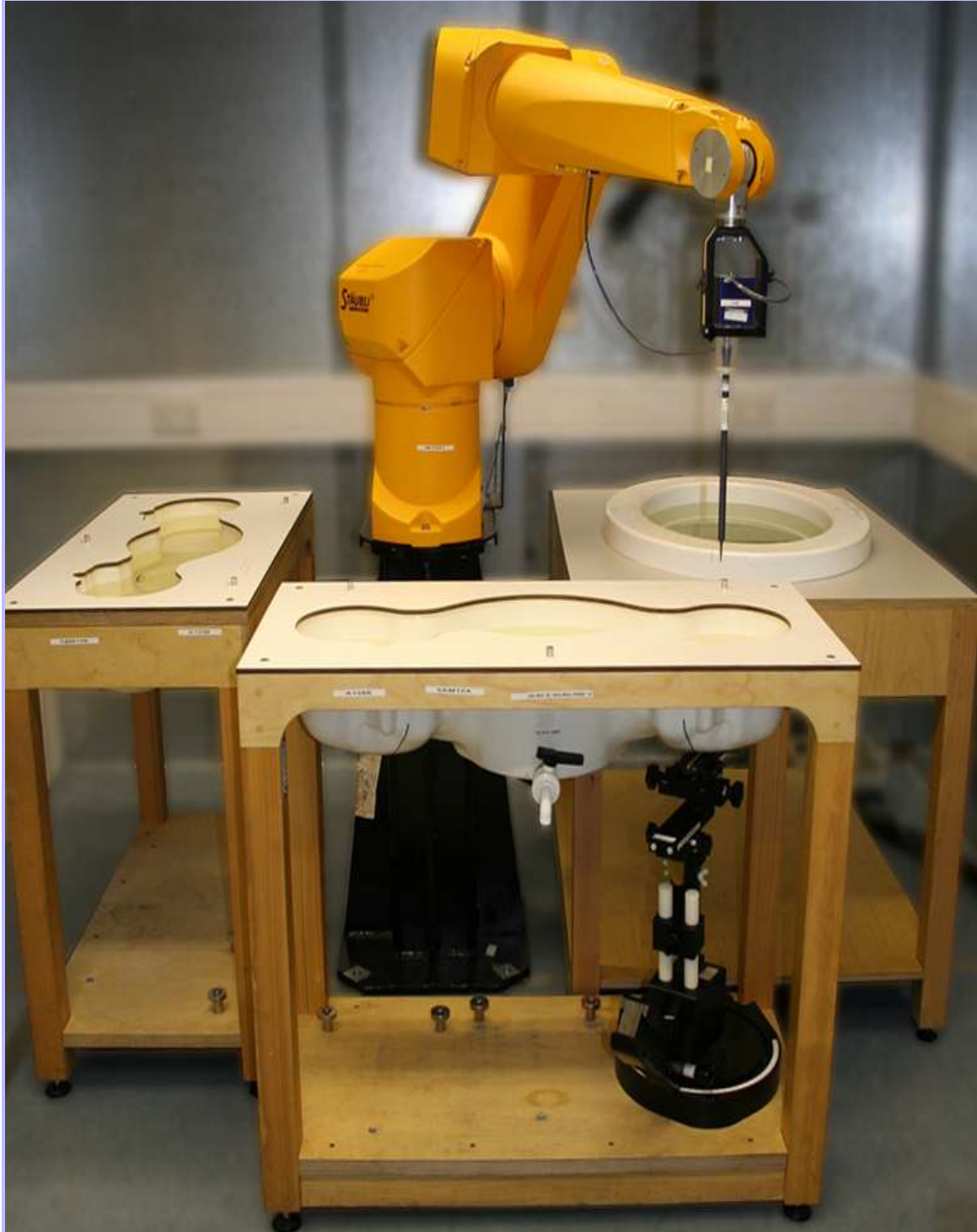


Appendix 4. Photographs

This appendix contains the following photographs:

Photo Reference Number	Title
PHT/91949/001	Test configuration for the measurement of Specific Absorption Rate (SAR)
PHT/91949/002	Touch Left
PHT/91949/003	Tilt Left
PHT/91949/004	Touch Right
PHT/91949/005	Tilt Right
PHT/91949/006	Front of EUT Facing Phantom at 10mm
PHT/91949/007	Front of EUT Facing Phantom at 15mm
PHT/91949/008	Back of EUT Facing Phantom at 10mm
PHT/91949/009	Back of EUT Facing Phantom at 15mm
PHT/91949/010	Left Hand Side of EUT Facing Phantom
PHT/91949/011	Right Hand Side of EUT Facing Phantom
PHT/91949/012	Top of EUT Facing Phantom
PHT/91949/013	Bottom of EUT Facing Phantom
PHT/91949/014	Front View of EUT
PHT/91949/015	Back View of EUT
PHT/91949/016	Left Hand View of EUT
PHT/91949/017	Right Hand View of EUT
PHT/91949/018	Top View of EUT
PHT/91949/019	Bottom View of EUT
PHT/91949/020	Internal View WWAN Radiated (SN: CB5A1NVE4C)
PHT/91949/021	Internal View WWAN Radiated (SN: CB5A1NVE6H)
PHT/91949/022	Internal View WWAN Radiated (SN: CB5A1NUVX9)
PHT/91949/023	Internal View WLAN Radiated (SN: CB5A1NVDME)
PHT/91949/024	Internal View WWAN Conducted (SN: CB5A1NUW3J)
PHT/91949/025	Internal View WWAN Conducted (SN: CB5A1NUW1H)
PHT/91949/026	Internal View WLAN Conducted (SN: CB5A1NUW0G)
PHT/91949/027	Front View of Battery
PHT/91949/028	Back View of Battery
PHT/91949/029	Dummy Battery View
PHT/91949/030	850/900 MHz Head Fluid Level
PHT/91949/031	850/900 MHz Body Fluid Level
PHT/91949/032	1800/1900 MHz Head Fluid Level
PHT/91949/033	1800/1900 MHz Body Fluid Level
PHT/91949/034	2450 MHz Head Fluid Level
PHT/91949/035	2450 MHz Body Fluid Level
PHT/91949/036	5GHz Head Fluid Level

PHT/91949/001: Test configuration for the measurement of Specific Absorption Rate (SAR)



PHT/91949/002: Touch Left



PHT/91949/003: Tilt Left



PHT/91949/004: Touch Right



PHT/91949/005: Tilt Right



PHT/91949/006: Front of EUT Facing Phantom at 10mm



PHT/91949/007: Front of EUT Facing Phantom at 15mm



PHT/91949/008: Back of EUT Facing Phantom at 10mm



PHT/91949/009: Back of EUT Facing Phantom at 15mm



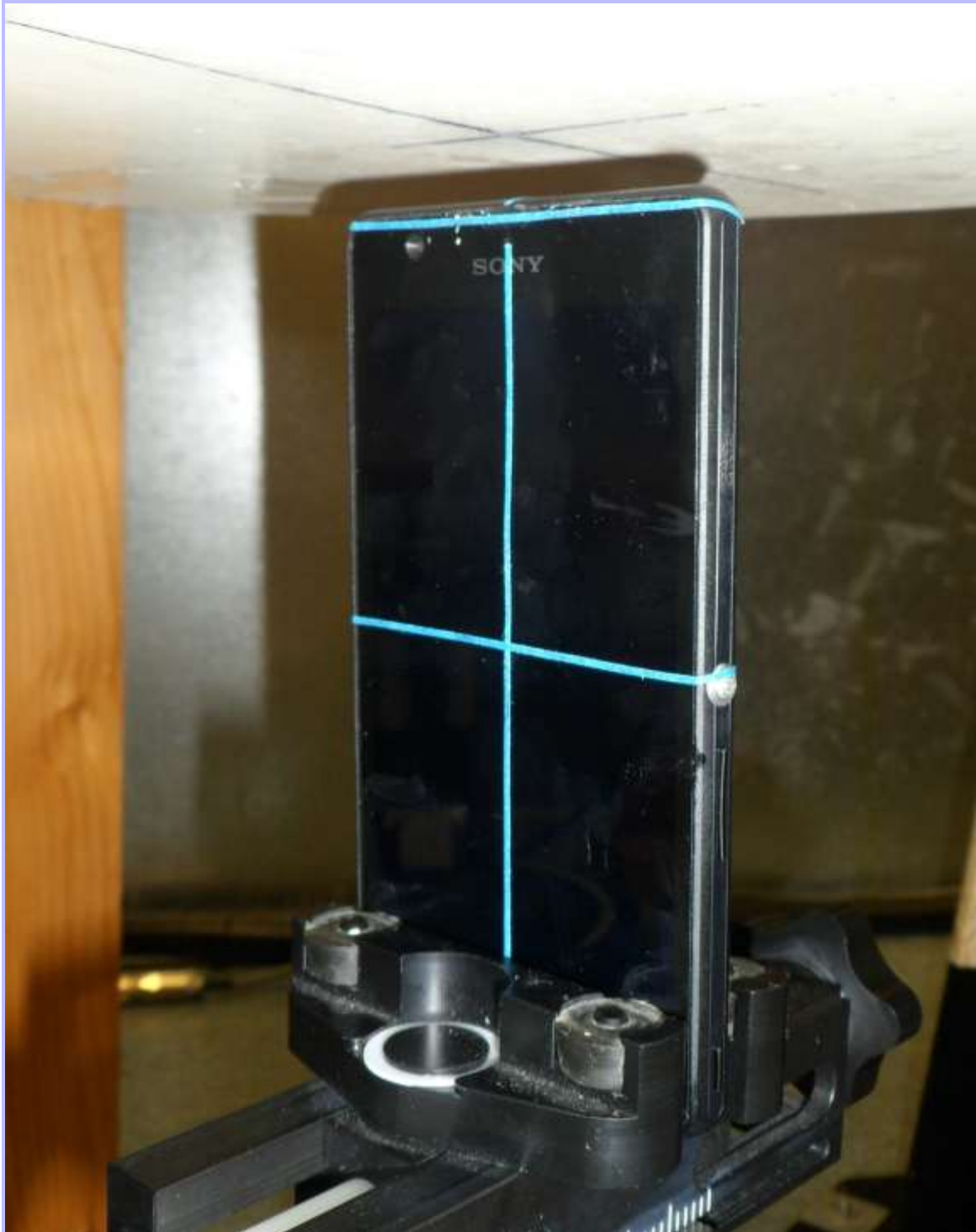
PHT/91949/010: Left Hand Side of EUT Facing Phantom



PHT/91949/011: Right Hand Side of EUT Facing Phantom



PHT/91949/012: Top of EUT Facing Phantom



PHT/91949/013: Bottom of EUT Facing Phantom



PHT/91949/014: Front View of EUT



PHT/91949/015: Back View of EUT



PHT/91949/016: Left Hand View of EUT



PHT/91949/017: Right Hand View of EUT



PHT/91949/018: Top View of EUT



PHT/91949/019: Bottom View of EUT



PHT/91949/020: Internal View WWAN Radiated (SN: CB5A1NVE4C)



PHT/91949/021: Internal View WWAN Radiated (SN: CB5A1NVE6H)



PHT/91949/022: Internal View WWAN Radiated (SN: CB5A1NUVX9)



PHT/91949/023: Internal View WLAN Radiated (SN: CB5A1NVDME)



PHT/91949/024: Internal View WWAN Conducted (SN: CB5A1NUW3J)



PHT/91949/025: Internal View WWAN Conducted (SN: CB5A1NUW1H)



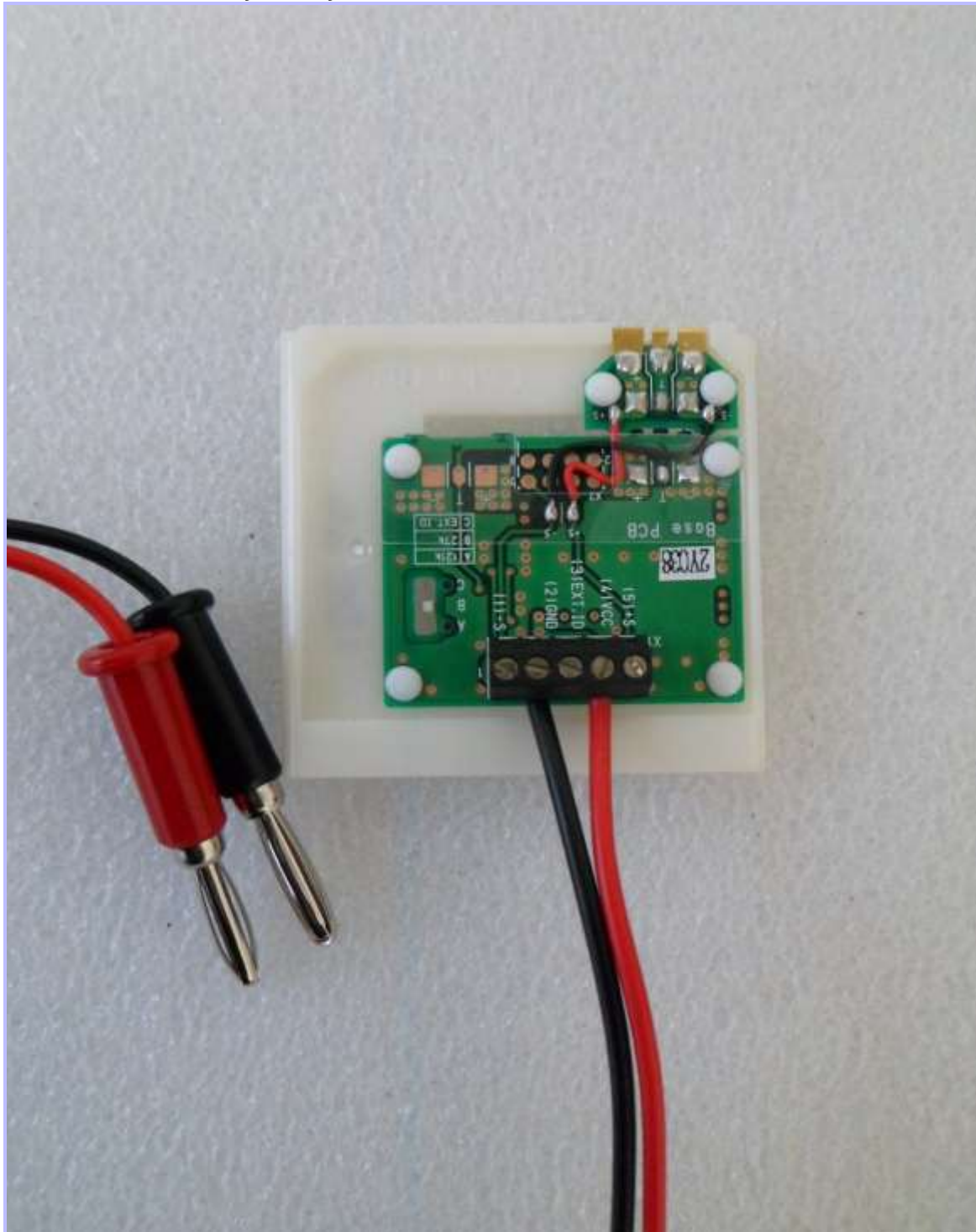
PHT/91949/026: Internal View WLAN Conducted (SN: CB5A1NUW0G)



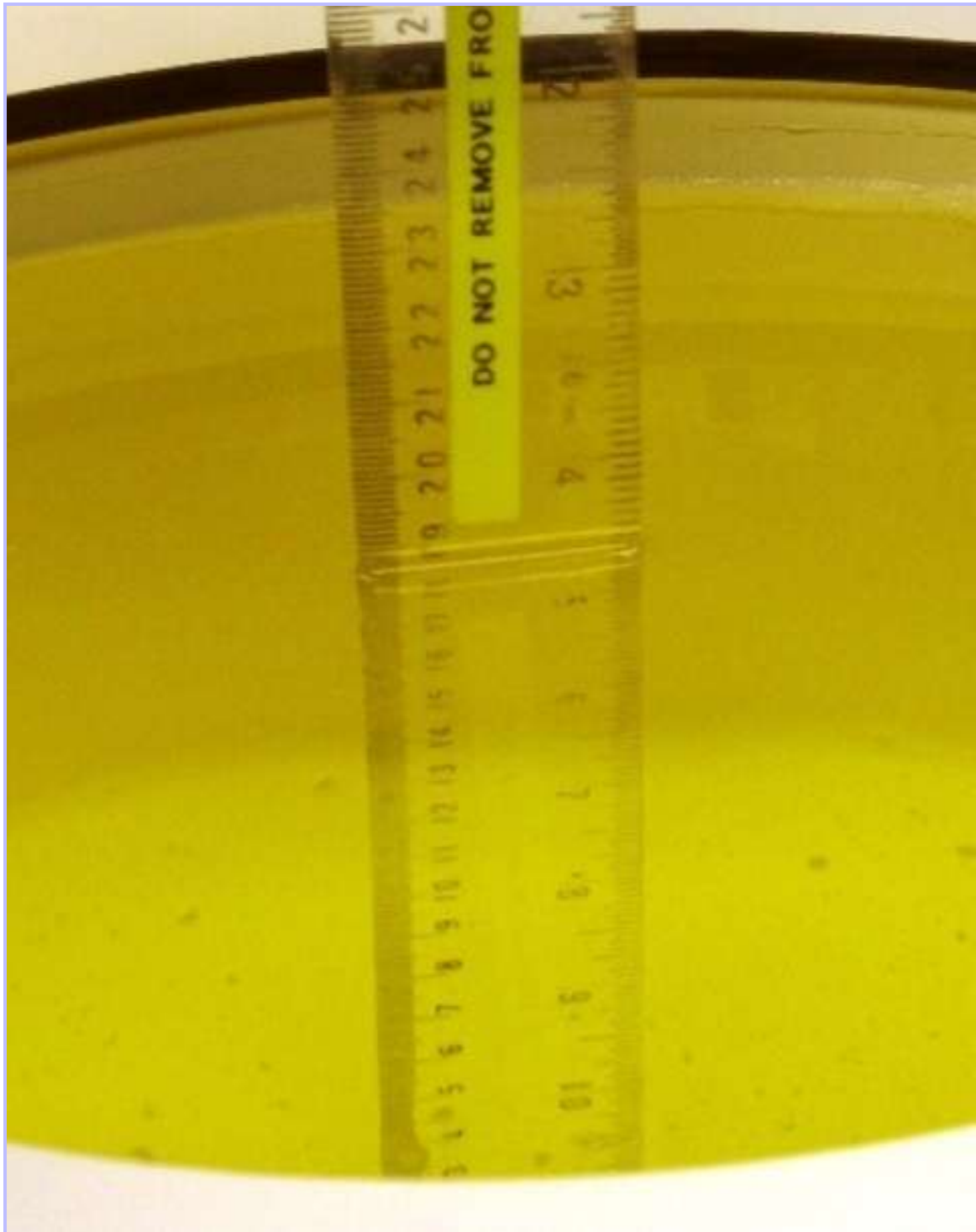
PHT/91949/027: Front View of Battery



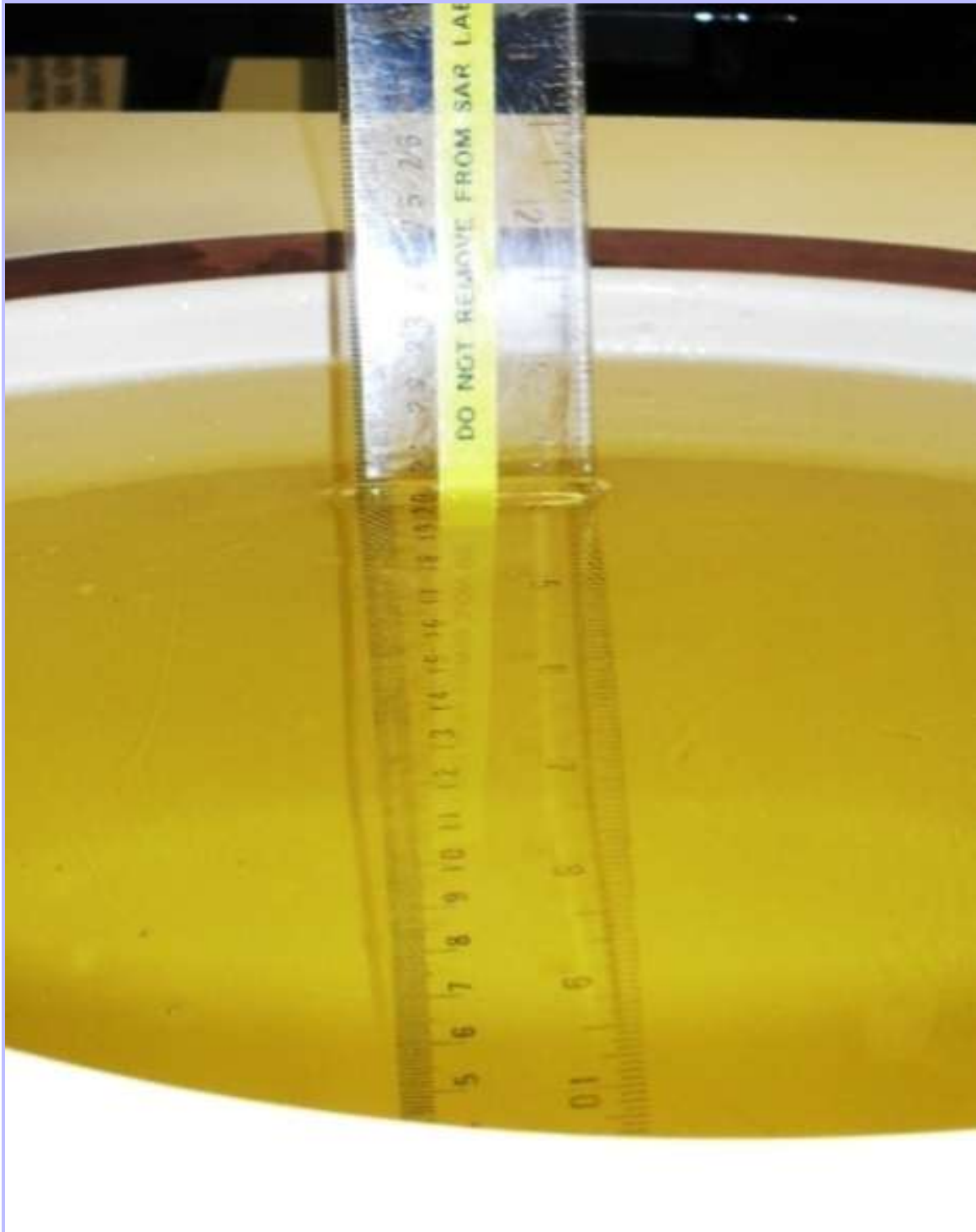
PHT/91949/029: Dummy Battery View



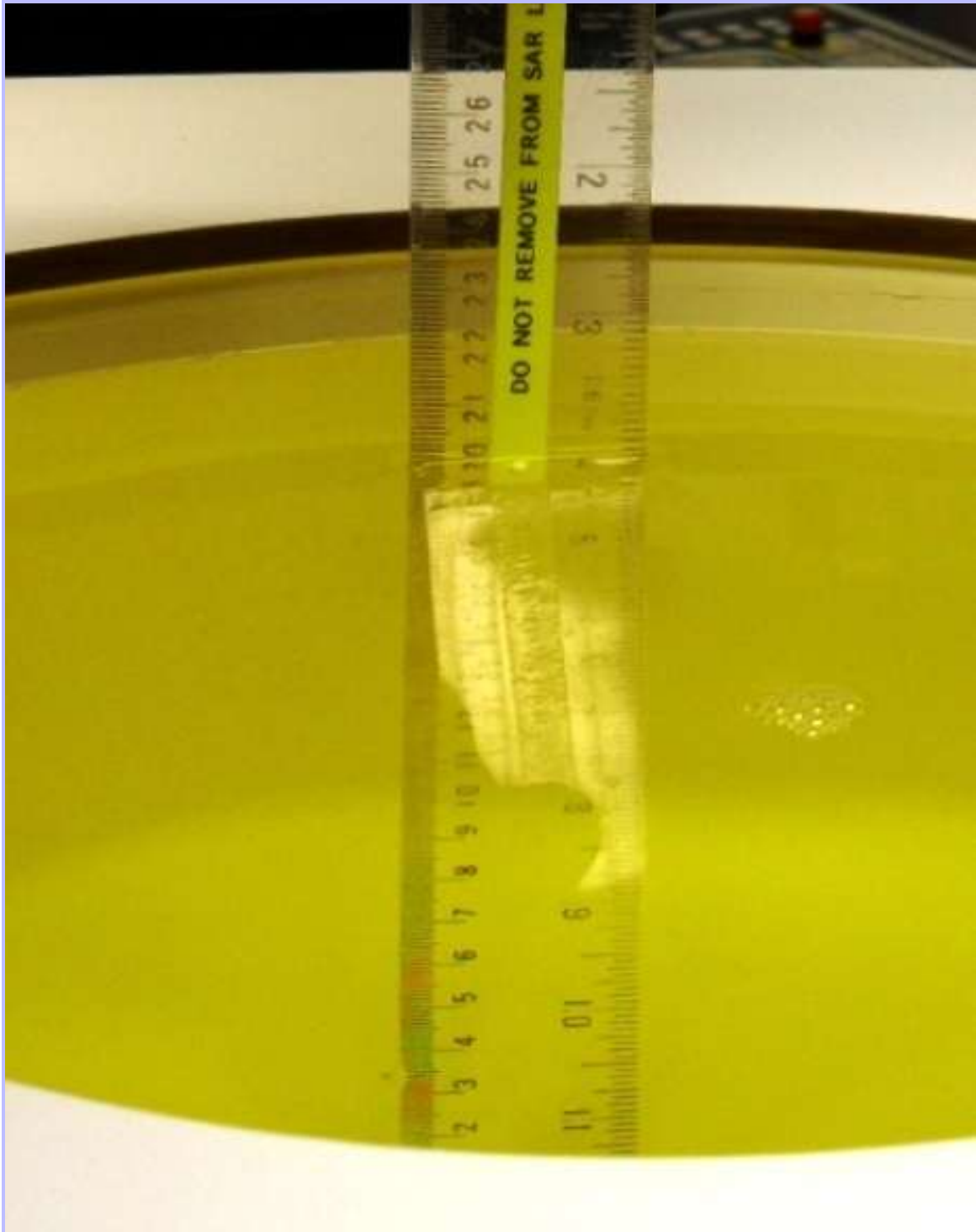
PHT/91949/030: 850/900 MHz Head Fluid Level



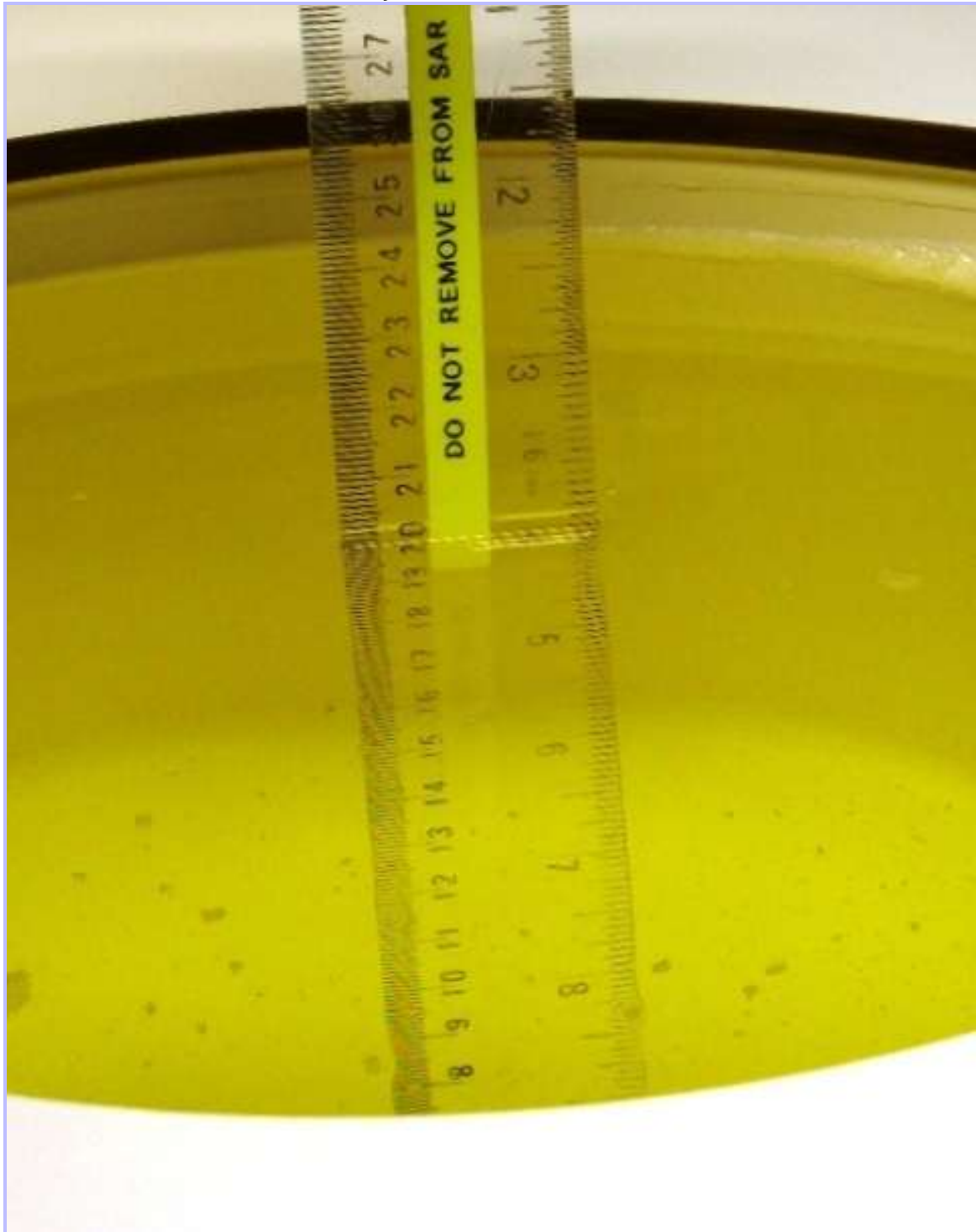
PHT/91949/031: 850/900 MHz Body Fluid Level



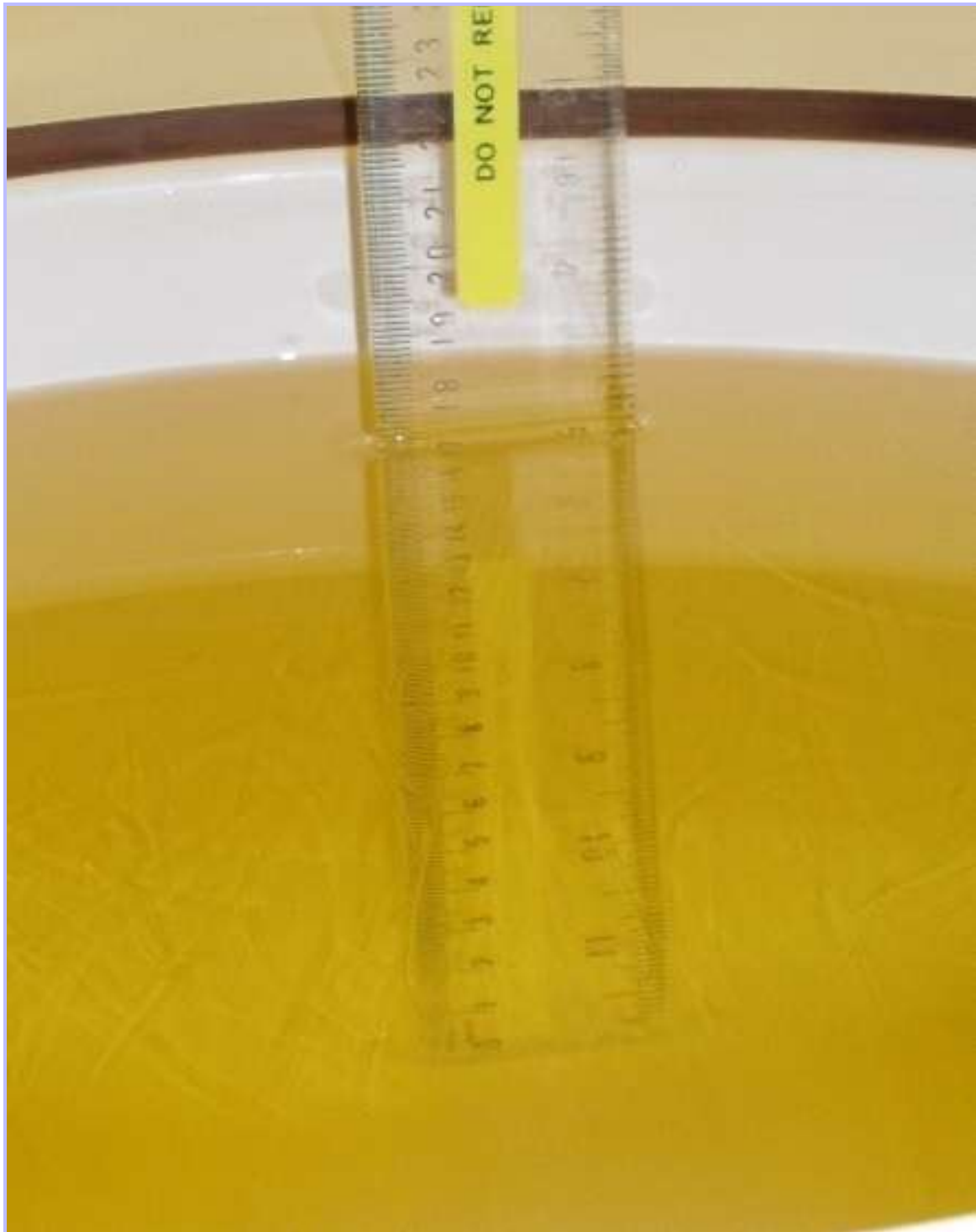
PHT/91949/032: 1800/1900 MHz Head Fluid Level



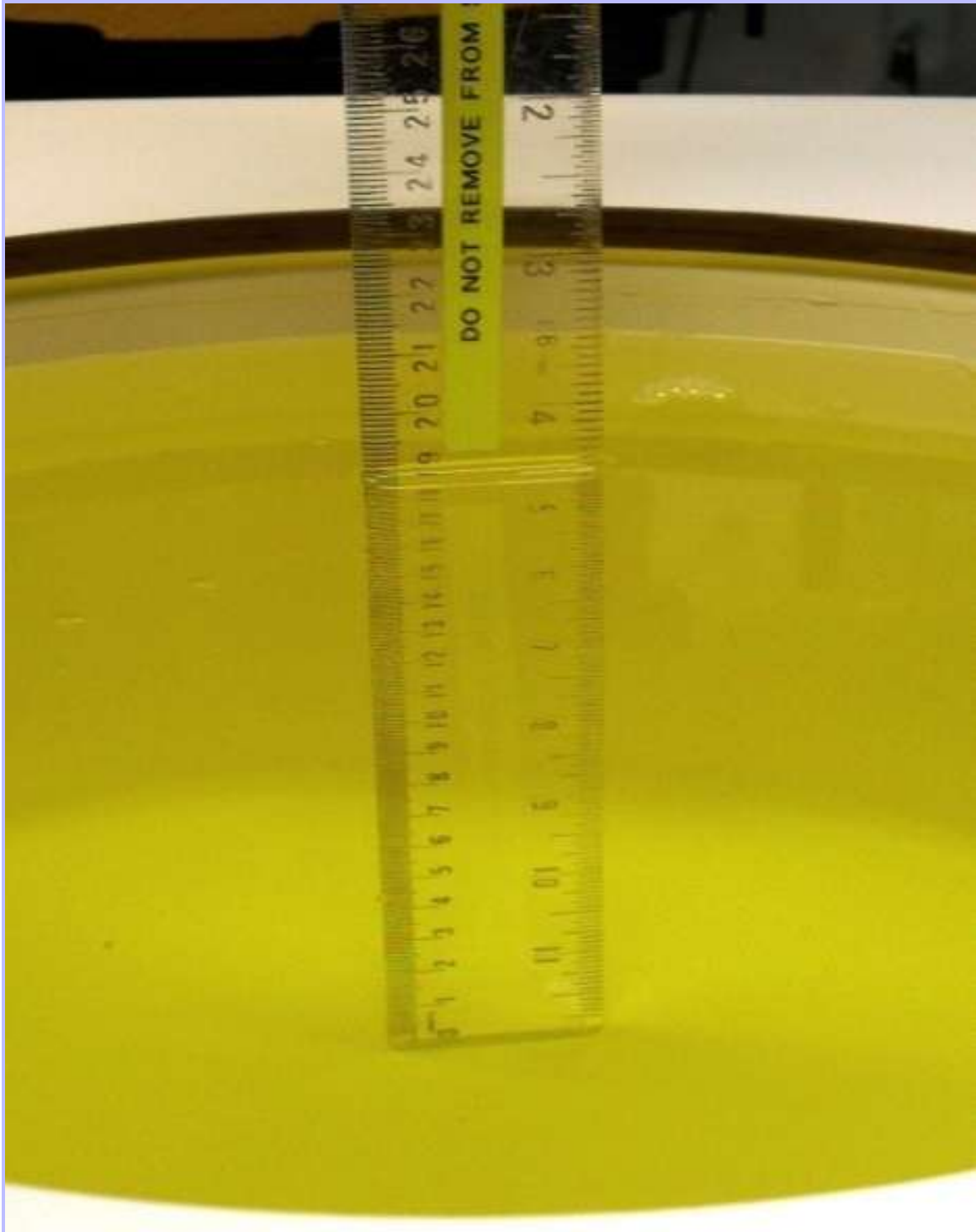
PHT/91949/033: 1800/1900 MHz Body Fluid Level



PHT/91949/034: 2450 MHz Head Fluid Level



PHT/91949/035: 2450 MHz Body Fluid Level



PHT/91949/036: 5GHz Head Fluid Level

