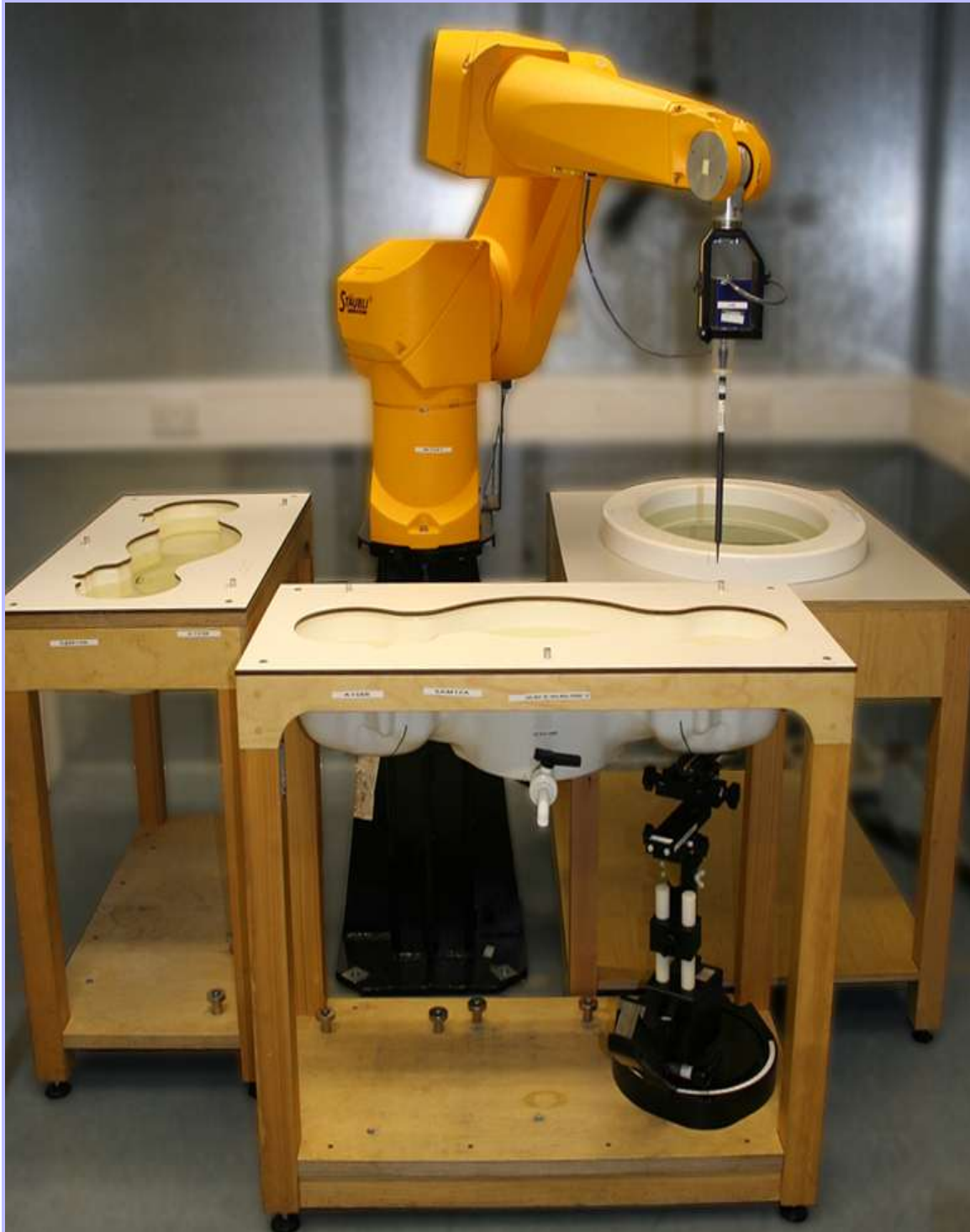


## Appendix 4. Photographs

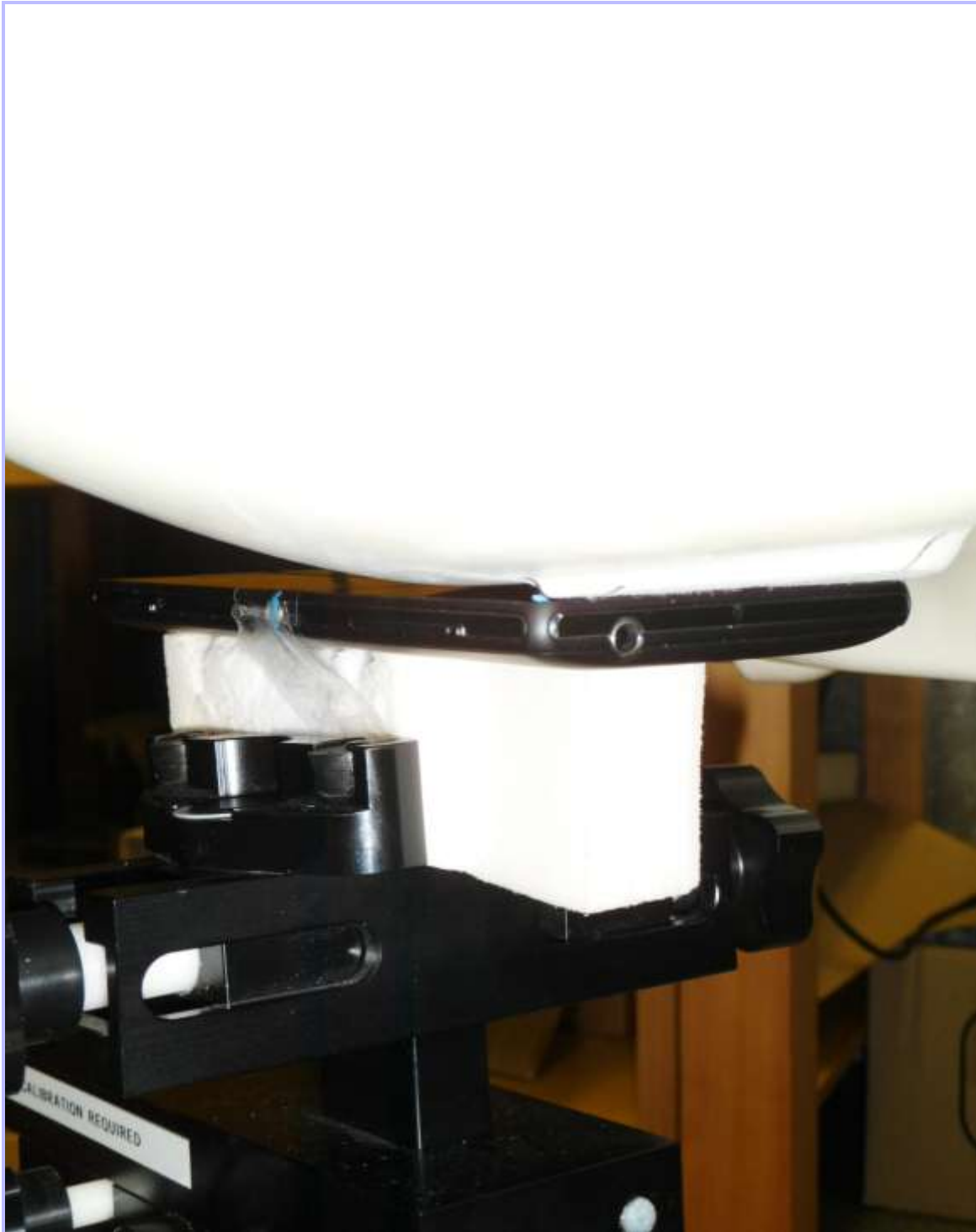
This appendix contains the following photographs:

Photo Reference Number	Title
PHT/90574/001	Test configuration for the measurement of Specific Absorption Rate (SAR)
PHT/90574/002	Touch Left
PHT/90574/003	Tilt Left
PHT/90574/004	Touch Right
PHT/90574/005	Tilt Right
PHT/90574/006	Front of EUT facing Phantom at 10mm
PHT/90574/007	Front of EUT facing Phantom at 15mm
PHT/90574/008	Back of EUT facing Phantom at 10mm
PHT/90574/009	Back of EUT facing Phantom at 15mm
PHT/90574/010	Left Hand Side of EUT Facing Phantom
PHT/90574/011	Right Hand Side of EUT Facing Phantom
PHT/90574/012	Top of EUT Facing Phantom
PHT/90574/013	Bottom of EUT Facing Phantom
PHT/90574/014	General Setup of EUT with PHF
PHT/90574/015	Front View of EUT
PHT/90574/016	Back View of EUT
PHT/90574/017	Left Hand View Side of EUT
PHT/90574/018	Right Hand Side View of EUT
PHT/90574/019	Top View of EUT
PHT/90574/020	Bottom View of EUT
PHT/90574/021	Internal view of WWAN Radiated Sample (CB5121TU04)
PHT/90574/022	Internal view of WWAN Radiated Sample (CB5121TTZN)
PHT/90574/023	Internal view of WWAN Conducted Sample (CB5121TUAT)
PHT/90574/024	Internal view of WLAN Radiated Sample (CB5121TU6L)
PHT/90574/025	Internal view of WLAN Radiated Sample (CB5121SWNV)
PHT/90574/026	Internal view of WLAN Conducted Sample (CB5121TU3L)
PHT/90574/027	PHF View
PHT/90574/028	900 MHz Head Fluid Level
PHT/90574/029	900 MHz Body Fluid Level
PHT/90574/030	1900 MHz Head Fluid Level
PHT/90574/031	1900 MHz Body Fluid Level
PHT/90574/032	2450 MHz Head Fluid Level
PHT/90574/033	2450 MHz Body Fluid Level
PHT/90574/034	5.0GHz Head Fluid Level
PHT/90574/035	5.0GHz Body Fluid Level

**PHT/90574/001: Test configuration for the measurement of Specific Absorption Rate (SAR)**



PHT/90574/002: Touch Left



PHT/90574/003: Tilt Left



PHT/90574/004: Touch Right



PHT/90574/005: Tilt Right



PHT/90574/006: Front of EUT facing Phantom at 10mm



PHT/90574/007: Front of EUT facing Phantom at 15mm





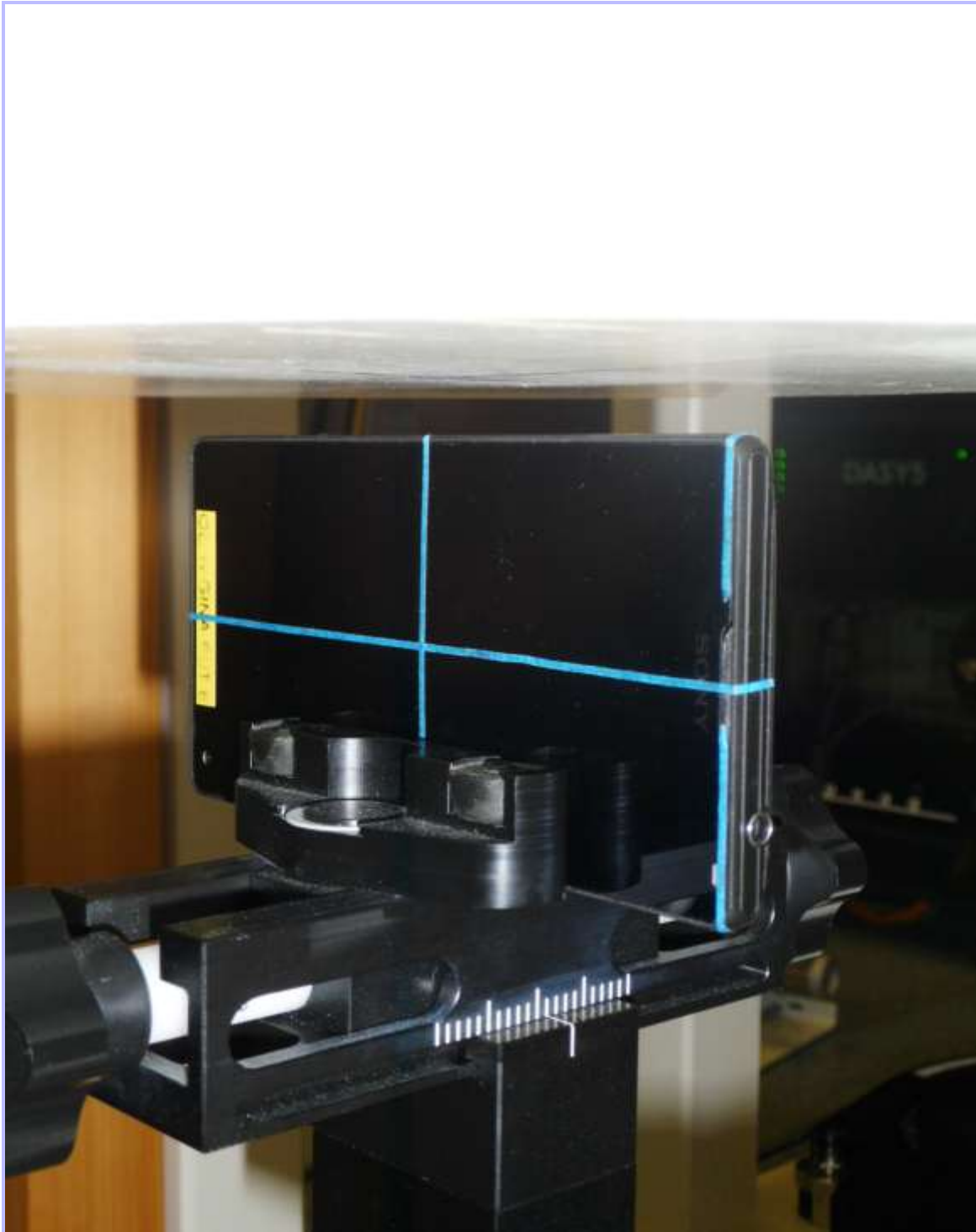
PHT/90574/008: Back of EUT facing Phantom at 10mm



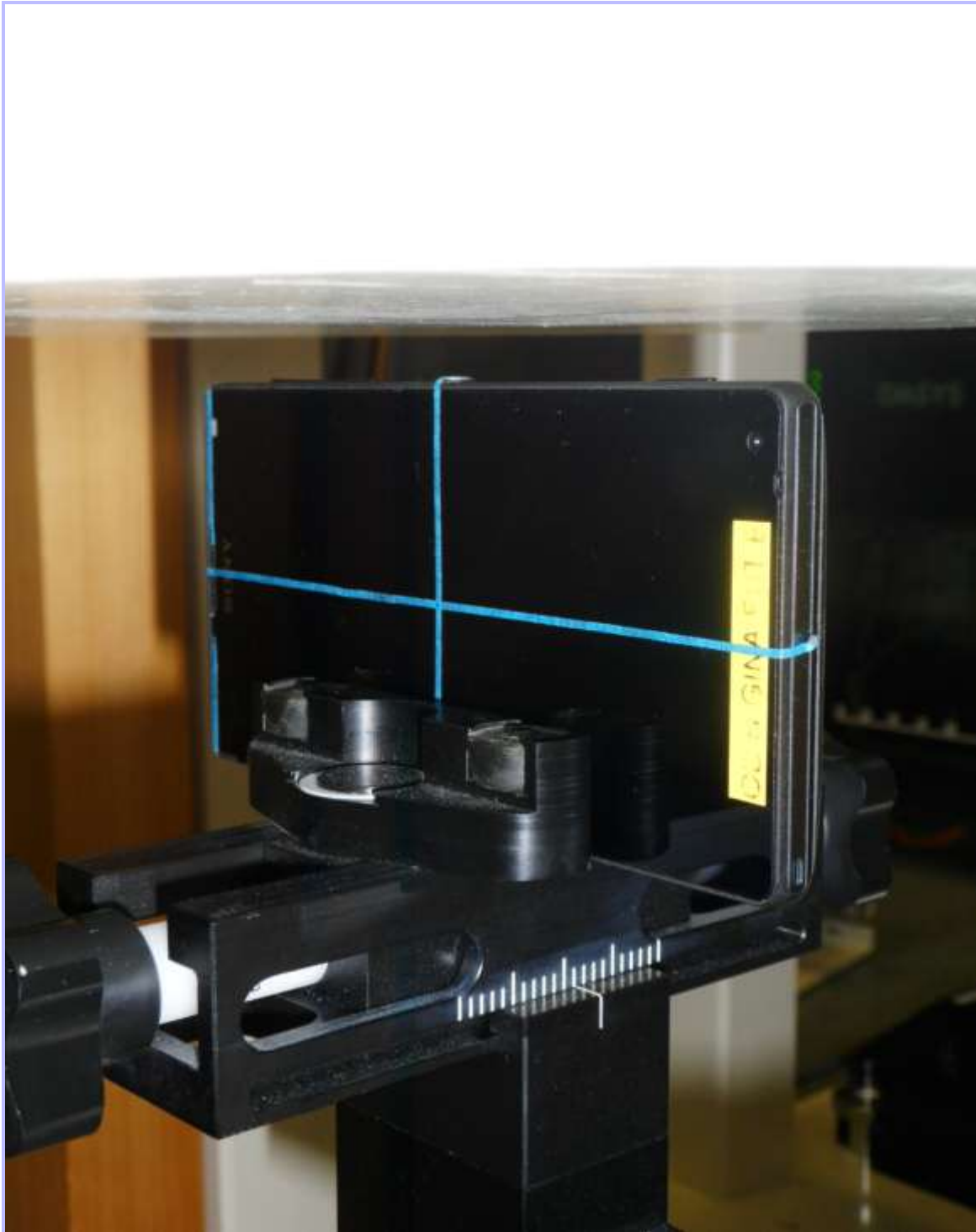
PHT/90574/009: Back of EUT facing Phantom at 15mm



PHT/90574/010: Left Hand Side of EUT Facing Phantom



PHT/90574/011: Right Hand Side of EUT Facing Phantom



PHT/90574/012: Top of EUT Facing Phantom



PHT/90574/013: Bottom of EUT Facing Phantom



PHT/90574/014: General Setup of EUT with PHF



PHT/90574/015: Front View of EUT





PHT/90574/016: Back View of EUT



PHT/90574/017: Left Hand View Side of EUT



PHT/90574/018: Right Hand Side View of EUT



PHT/90574/019: Top View of EUT



PHT/90574/020: Bottom View of EUT



PHT/90574/021: Internal view of WWAN Radiated Sample (CB5121TU04)



PHT/90574/022: Internal view of WWAN Radiated Sample (CB5121TTZN)



PHT/90574/023: Internal view of WWAN Conduced Sample (CB5121TUAT)





PHT/90574/024: Internal view of WLAN Radiated Sample (CB5121TU6L)



PHT/90574/025: Internal view of WLAN Radiated Sample (CB5121SWNV)



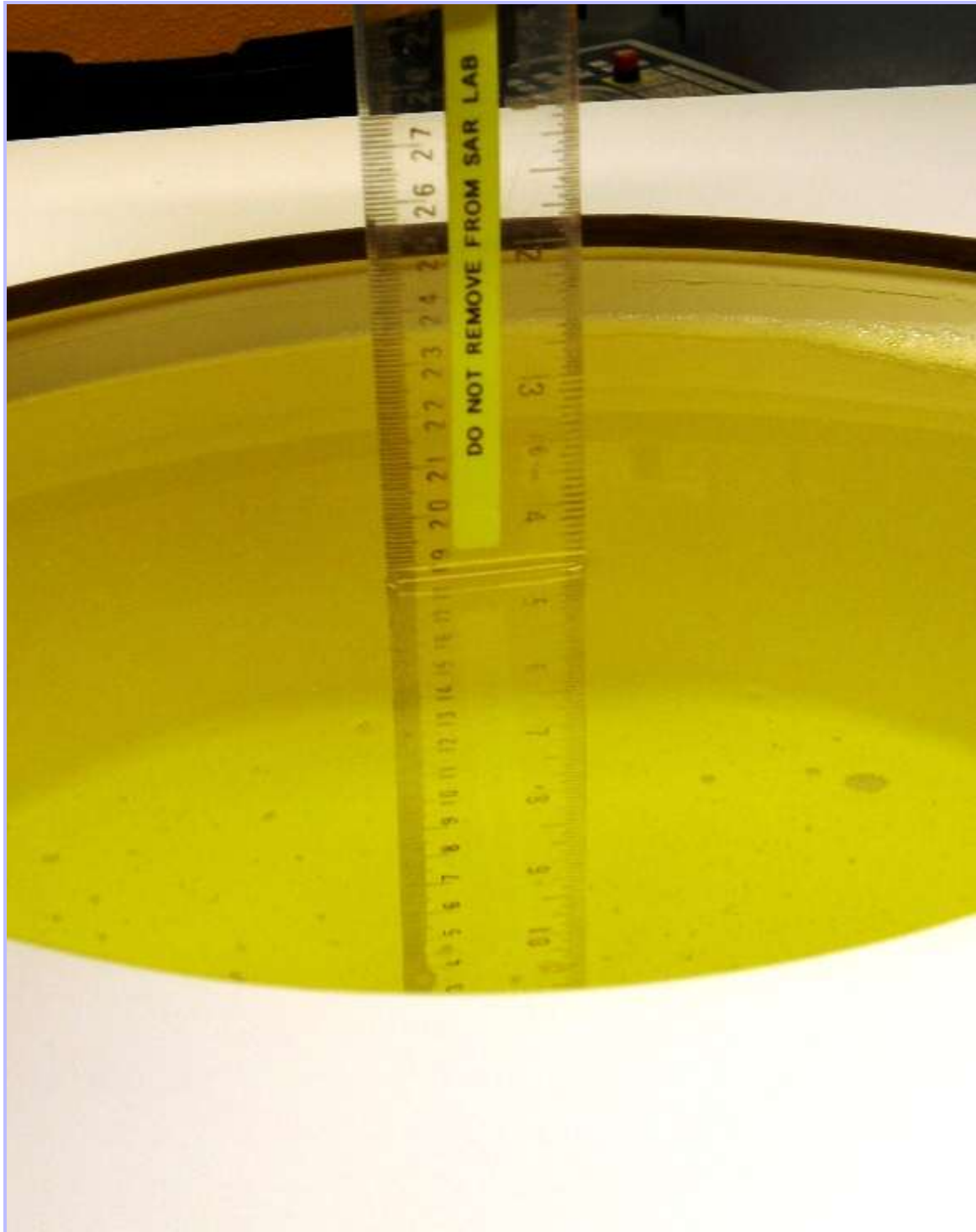
PHT/90574/026: Internal view of WLAN Conducted Sample (CB5121TU3L)



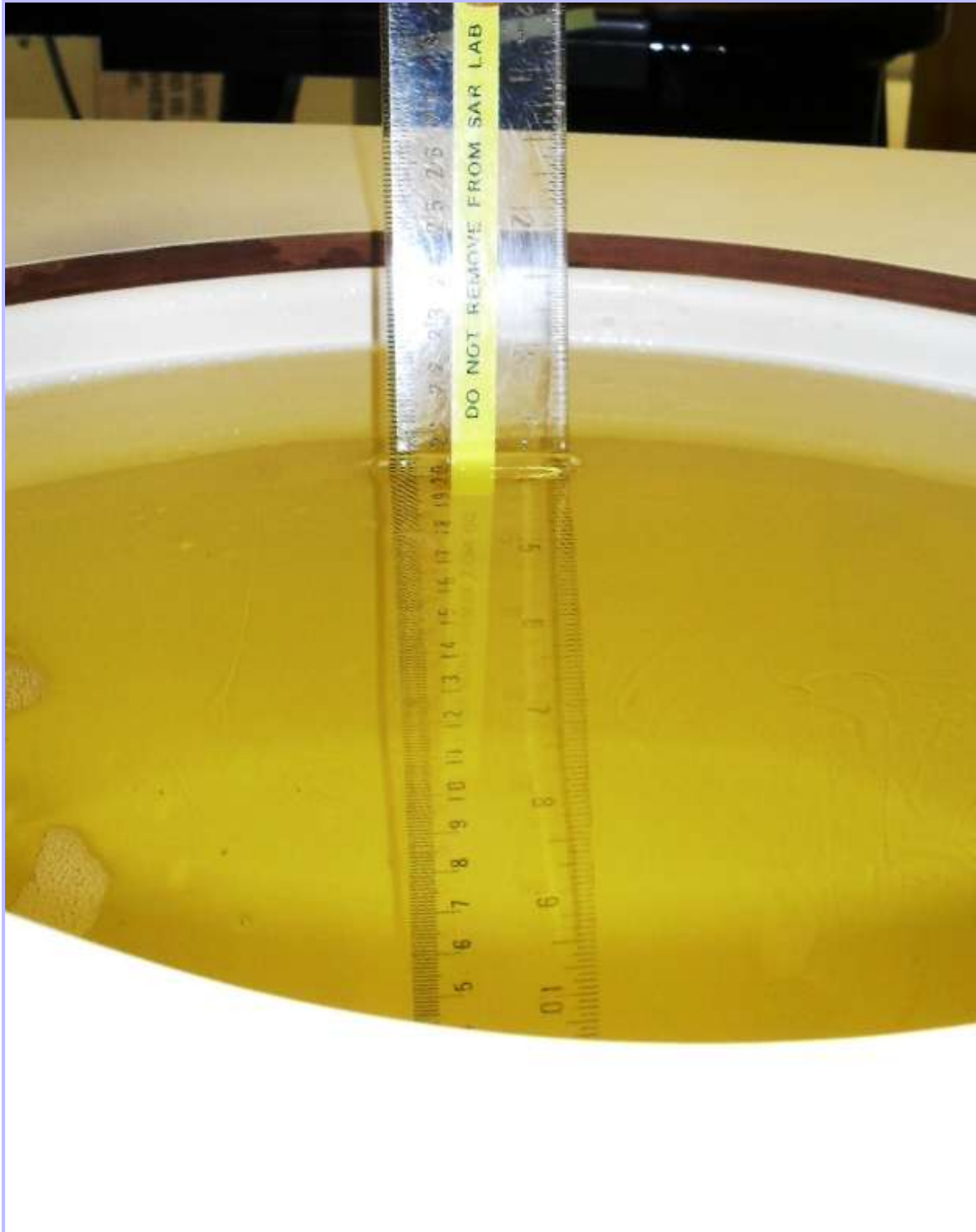
PHT/90574/027: PHF View



PHT/90574/028: 900 MHz Head Fluid Level



PHT/90574/029: 900 MHz Body Fluid Level



PHT/90574/030: 1900 MHz Head Fluid Level

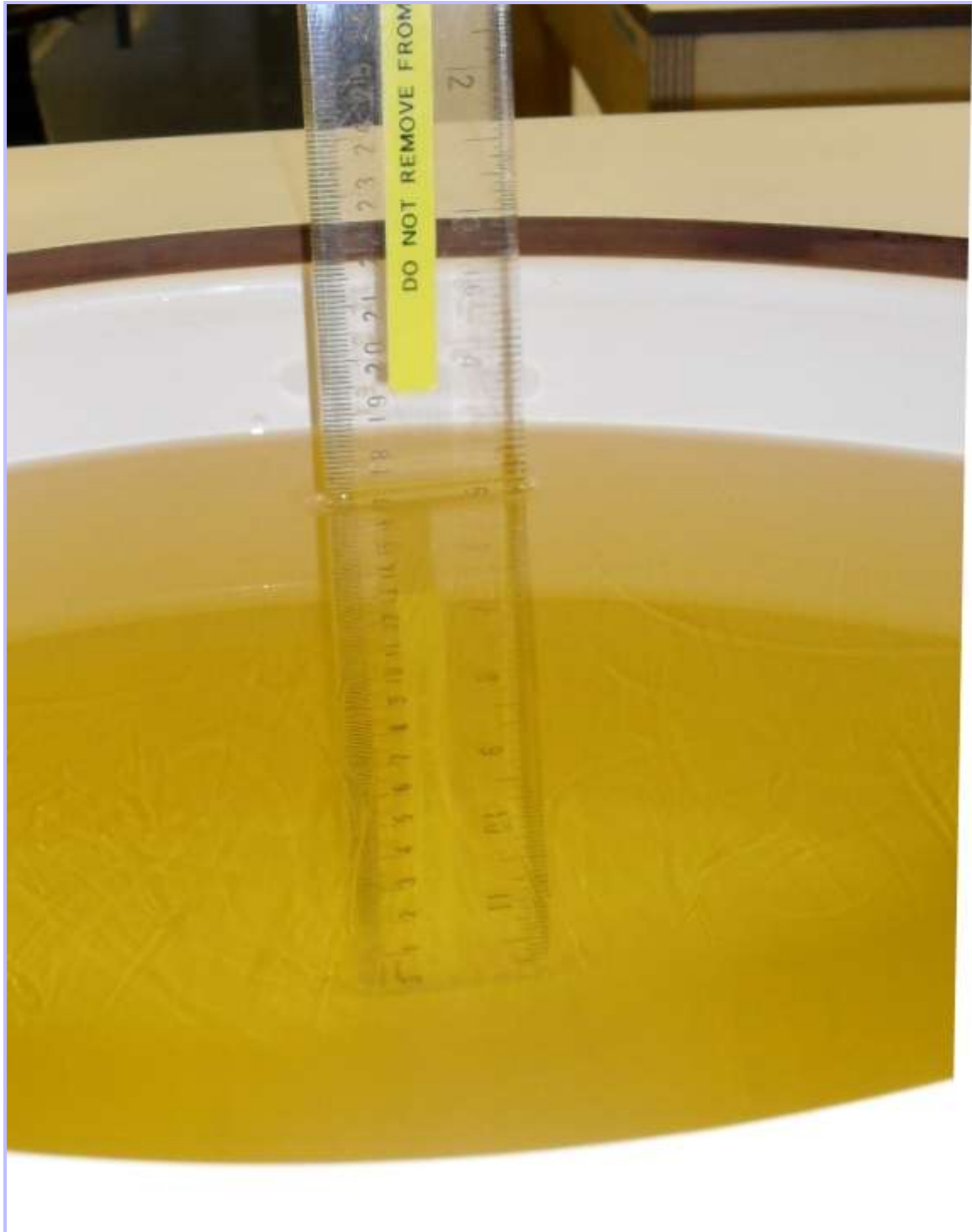


PHT/90574/031: 1900 MHz Body Fluid Level

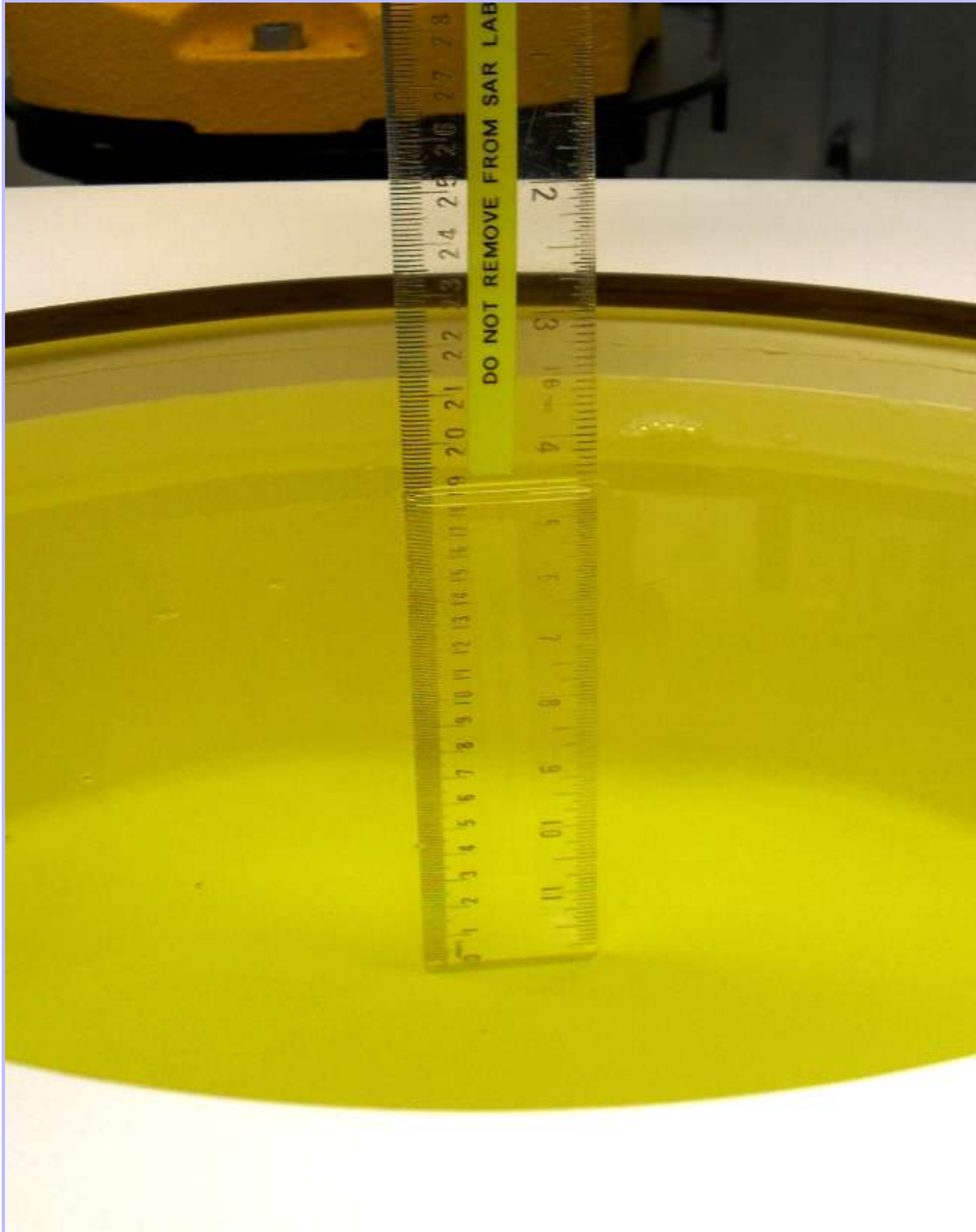




PHT/90574/032: 2450 MHz Head Fluid Level



PHT/90574/033: 2450 MHz Body Fluid Level



PHT/90574/034: 5.0GHz Head Fluid Level



PHT/90574/035: 5.0 GHz Body Fluid Level

