

Prepared (also subject responsible if other)

SEM/CGOVDPLG, Leif Hedin

Approved

SEM/CGOVDPLG, Leif Hedin

Checked

 Company Internal
 MARKING DRAWING
 No.

1270-4101 Uen

Date

2012-11-12

Rev

2

Reference

2

Mobile Phone label, content

1 General information

Mobile Phone label part no	<ul style="list-style-type: none"> 1266-7039
Mobile Phone label content part no	<ul style="list-style-type: none"> 1270-4100
Bar code	<ul style="list-style-type: none"> Print quality: according to COSMETIC GUIDELINE – Bar code labels document 1222-6072 Uen Quiet zone: No bar codes are allowed to be closer to a label edge than 2 mm!
Text	If applicable, or nothing else specified, Zebra printer Scaleable Smooth Font Arial Narrow is imposed. When needed, the text is adjusted to fit the label.
Coordinates	“(x/y)” under each line number specifies the bottom / left alignment for text, graphics and bar codes, x is measured vertically, and y horizontally from the upper left corner of the label (landscape format), both in mm. When needed, the alignment is adjusted to fit the label.

MLCI= Main Label Content Information Document

2 Printing information

	Content	Format
Line 1a (3,0/6,5)	Model Name “C6506”	Text, height 1,2 mm. <i>According to Chapter 1 in MLCI.</i>
Line 1b (3,0/21,0)	Product number of the Sales Item in which the phone is packed, if applicable. “SI XXXX-XXXX”	Text, height 1,2 mm.
Line 2a (5,3/9,0)	“TYPE: PM-0230-BV”	Text, height 1,2 mm. <i>According to Chapter 1 in MLCI.</i>
Line 2b (5,3/23,0)	HW & SW identification field, if applicable; “EFF”	Text, height 1,2 mm. According to Type-testing report under Product Model Specifying Documents
Line 3 (7,3/9,0)	“FCC ID: PY7PM-0230”	Text, height 1,2 mm. <i>According to Chapter 1 in MLCI.</i>
Line 4 (9,0/9,0)	“IC: 4170B-PM0230”	Text, height 1,2 mm. <i>According to Chapter 1 in MLCI.</i>
Line 5 (10,7/24,0)	WEEE trashcan without bar symbol	Graphics, min. height 5mm, according to 1202-5537.
Line 6 (16,5/3,5)	Actual electronic serial number (IMEI) of the mobile phone, “00000000-000000-0”	Text, height 1,2mm. In the format TAC-SNR-CD. TAC and SNR derived from pos 500 in BOM. CD = check digit according to the Luhn formula (ISO/IEC 7812), GSM 02.16.

Prepared (also subject responsible if other)
 SEM/CGOVDPLG, Leif Hedin
 Approved
 SEM/CGOVDPLG, Leif Hedin

Checked

Company Internal
 MARKING DRAWING
 No.

1270-4101 Uen

Date

Rev

Reference

2012-11-12

2

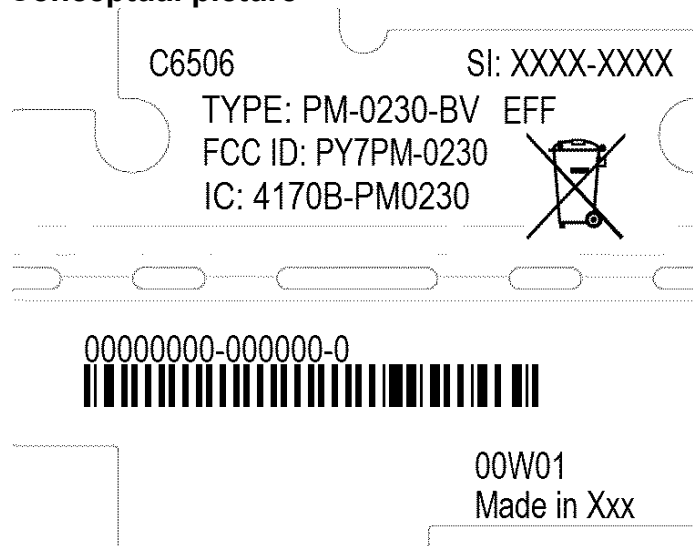
2

Line 7 (18,5/3,5)	Line 7 in barcode, acc to line 6 (IMEI-number)	Bar code, height 3,0 mm. As desired by supplier (e.g. Code 128 symbology).
Line 8 (22,0/21,5)	Production week (flash), "00W01" (yy = year, ww = week)	Text, height 1,2 mm.
Line 9 (23,5/21,5)	Marking of origin; "Made in Xxx" "Xxx" = actual country of production of the included telephone, in English	Text, height 1,2 mm.

3 Layout

The conceptual picture (for Zebra 90Xkill printer, or equivalent) should not be considered as specifications, but as an additional help for setting up the label.

3.1 Conceptual picture



double underlined = major changes since last revision.

Prepared (also subject responsible if other)

SEM/CGOVDPLG, Leif Hedin
Approved

Checked

SEM/CGOVDPLG, Leif Hedin

Company Internal
MARKING DRAWING
No.

1270-4101 Uen
Date

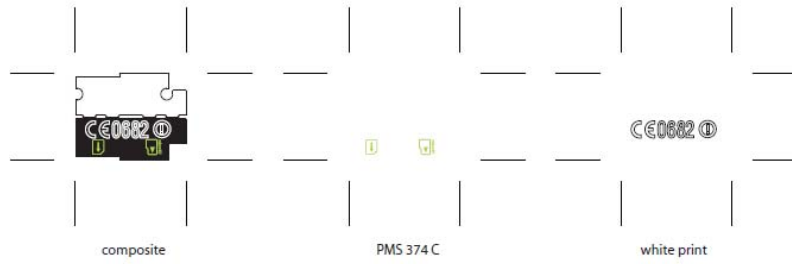
Rev

Reference

2012-11-12

2

7



Prepared (also subject responsible if other)

SEM/CGOVDPLG, Leif Hedin
Approved

SEM/CGOVDPLG, Leif Hedin

Checked

Company Internal
MARKING DRAWING
No.

1270-4101 Uen

Date

2012-11-12

Rev

2

Reference

7

Label placement

To find the label follow these steps:

1. Remove the cover on the rear side of the product.



Prepared (also subject responsible if other)

SEM/CGOVDPLG, Leif Hedin
Approved

SEM/CGOVDPLG, Leif Hedin

Checked

Company Internal
MARKING DRAWING
No.

1270-4101 Uen

Date

2012-11-12

Rev

2

Reference

7

