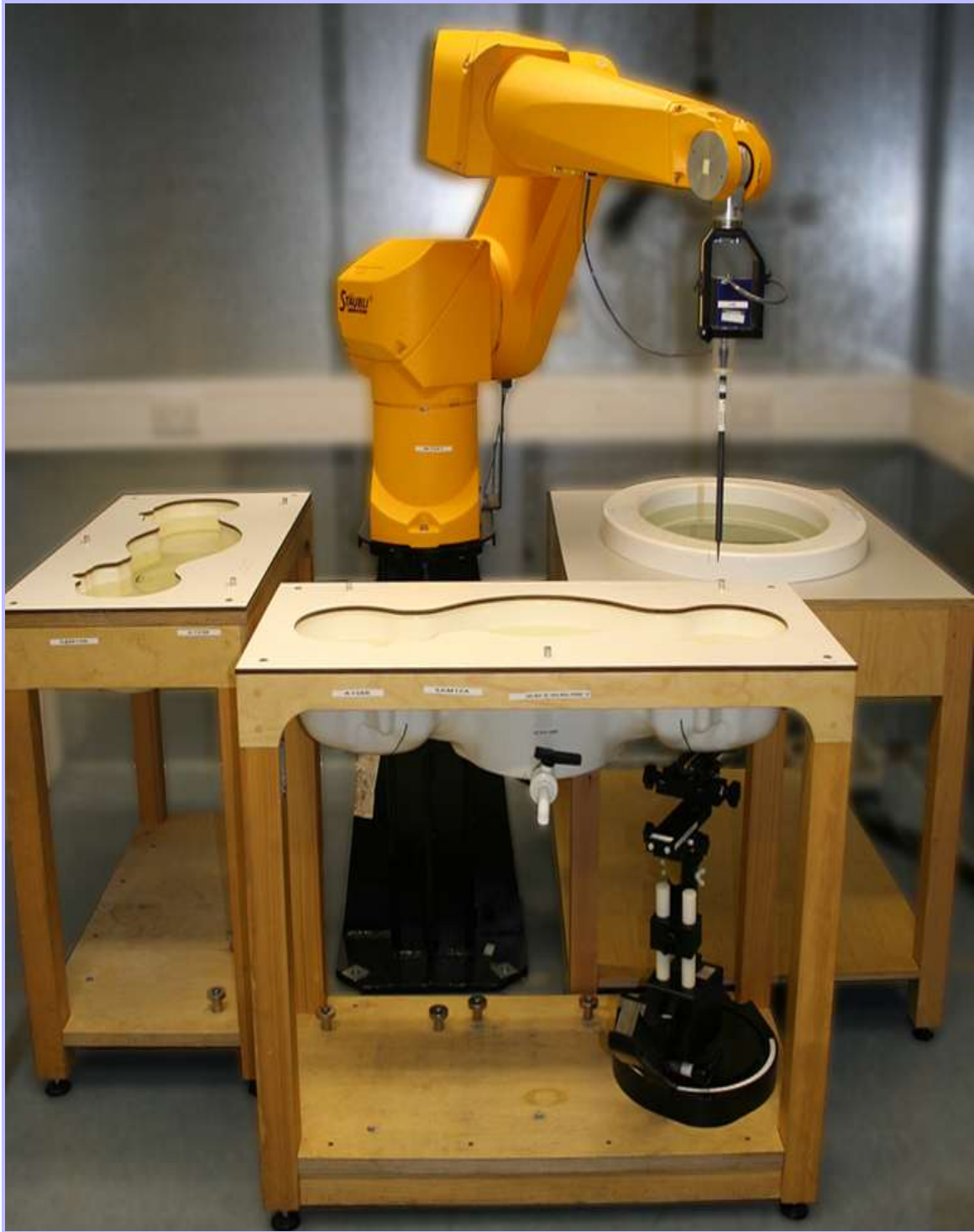


Appendix 4. Photographs

This appendix contains the following photographs:

Photo Reference Number	Title
PHT/90893JD02/001	Test configuration for the measurement of Specific Absorption Rate (SAR)
PHT/90893JD02/002	Touch Left
PHT/90893JD02/003	Tilt Left
PHT/90893JD02/004	Touch Right
PHT/90893JD02/005	Tilt Right
PHT/90893JD02/006	Front of EUT facing Phantom at 10mm
PHT/90893JD02/007	Front of EUT facing Phantom at 15mm
PHT/90893JD02/008	Back of EUT facing Phantom at 10mm
PHT/90893JD02/009	Back of EUT facing Phantom at 15mm
PHT/90893JD02/010	Left Hand Side of EUT Facing Phantom
PHT/90893JD02/011	Right Hand Side of EUT Facing Phantom
PHT/90893JD02/012	Top of EUT Facing Phantom
PHT/90893JD02/013	Bottom of EUT Facing Phantom
PHT/90893JD02/014	General Setup with PHF
PHT/90893JD02/015	Front View of EUT
PHT/90893JD02/016	Back View of EUT
PHT/90893JD02/017	Left Hand View Side of EUT
PHT/90893JD02/018	Right Hand Side View of EUT
PHT/90893JD02/019	Top View of EUT
PHT/90893JD02/020	Bottom View of EUT
PHT/90893JD02/021	Internal view of WWAN Radiated Sample (SN: CB5121Z4FW)
PHT/90893JD02/022	Internal view of WWAN Radiated Sample (SN: CB5121Z4FD)
PHT/90893JD02/023	Internal view of WWAN Radiated Sample (SN: CB5121Z4FZ)
PHT/90893JD02/024	Internal view of WLAN Radiated Sample (SN: CB5121Z4FG)
PHT/90893JD02/025	Internal view of WLAN Radiated Sample (SN: CB5121Z4EQ)
PHT/90893JD02/026	Internal view of WWAN Conducted Sample (SN: CB5121Z4EX)
PHT/90893JD02/027	Internal view of WLAN Conducted Sample (SN: CB5121Z4EG)
PHT/90893JD02/028	PHF View
PHT/90893JD02/029	900 MHz Head Fluid Level
PHT/90893JD02/030	900 MHz Body Fluid Level
PHT/90893JD02/031	1900 MHz Head Fluid Level
PHT/90893JD02/032	1900 MHz Body Fluid Level
PHT/90893JD02/033	2450 MHz Head Fluid Level
PHT/90893JD02/034	2450 MHz Body Fluid Level
PHT/90893JD02/035	5GHz Head Fluid Level
PHT/90893JD02/036	5GHz Body Fluid Level

PHT/90893JD02/001: Test configuration for the measurement of Specific Absorption Rate (SAR)



PHT/90893JD02/002: Touch Left



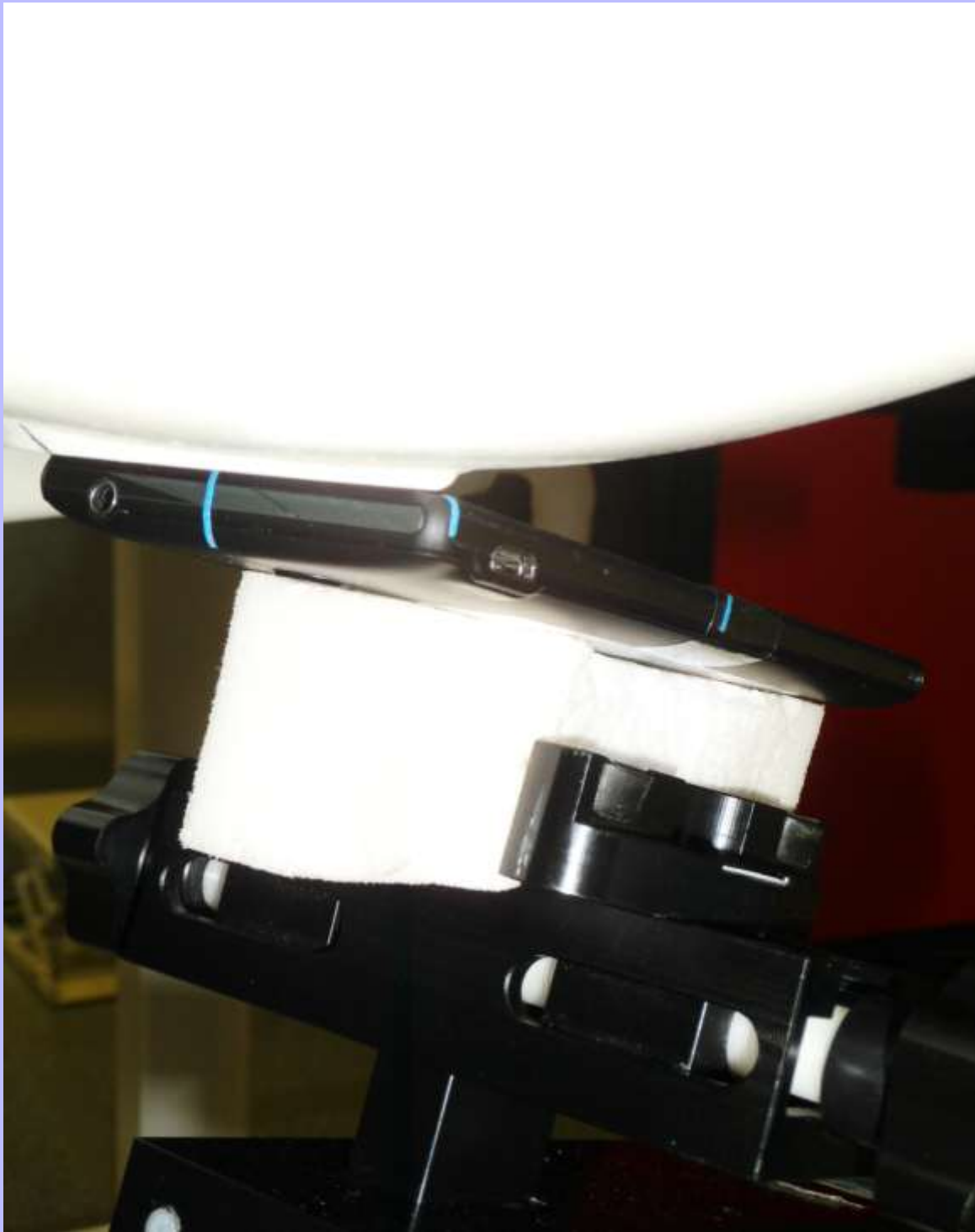
PHT/90893JD02/003: Tilt Left



PHT/90893JD02/004: Touch Right



PHT/90893JD02/005: Tilt Right



PHT/90893JD02/006: Front of EUT facing Phantom at 10mm



PHT/90893JD02/007: Front of EUT facing Phantom at 15mm



PHT/90893JD02/008: Back of EUT facing Phantom at 10mm



PHT/90893JD02/009: Back of EUT facing Phantom at 15mm



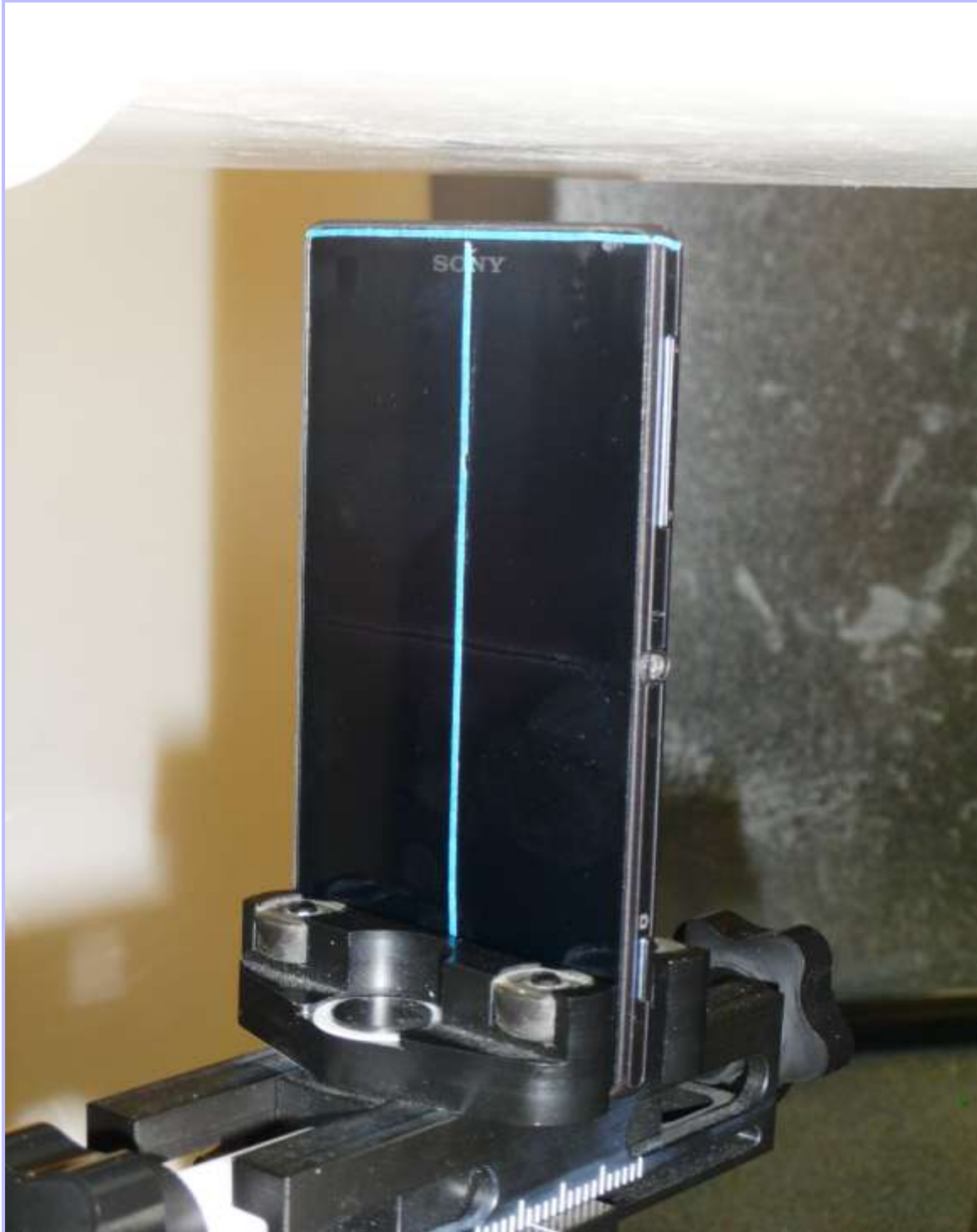
PHT/90893JD02/010: Left Hand Side of EUT Facing Phantom



PHT/90893JD02/011: Right Hand Side of EUT Facing Phantom



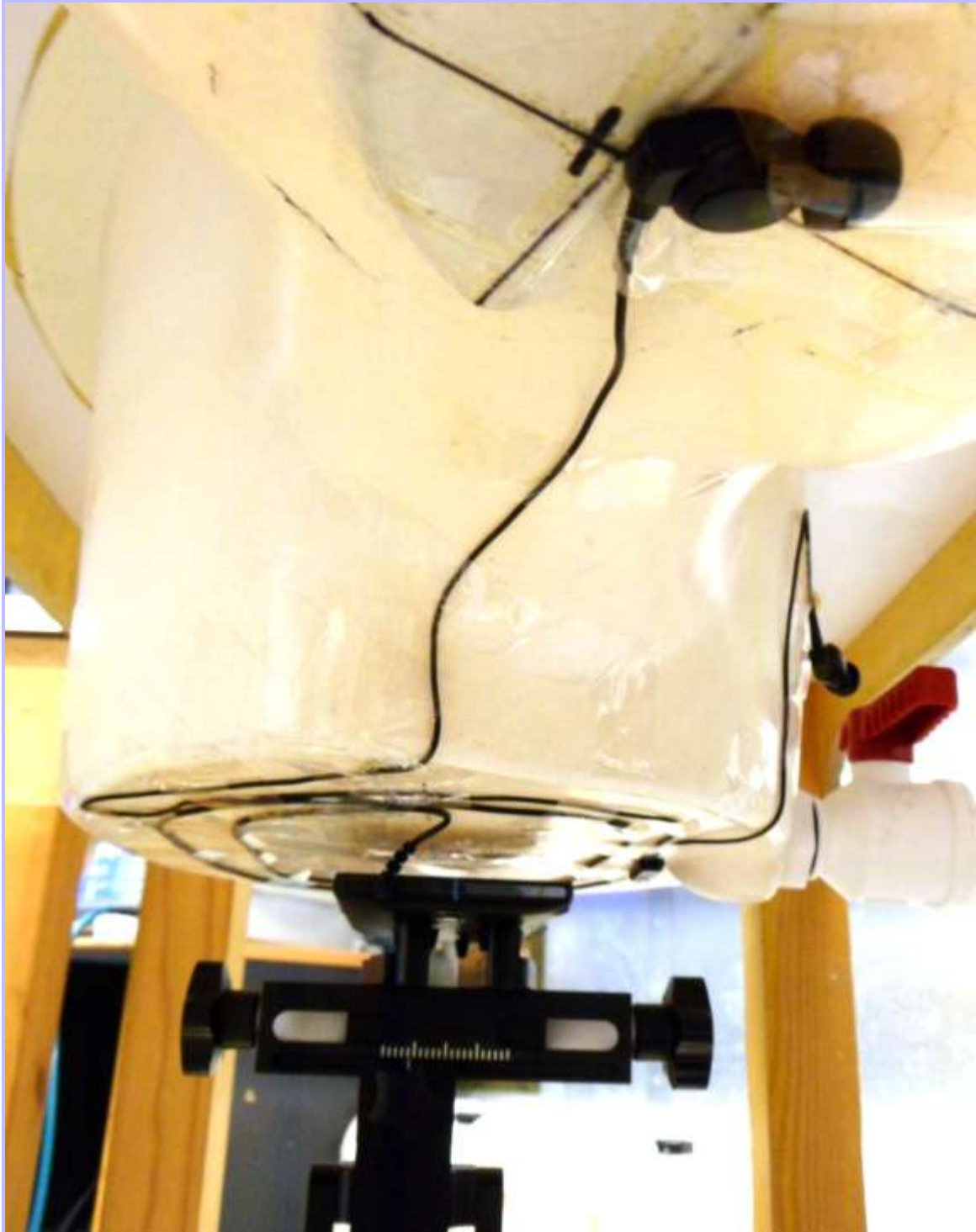
PHT/90893JD02/012: Top of EUT Facing Phantom



PHT/90893JD02/013: Bottom of EUT Facing Phantom



PHT/90893JD02/014: General Setup with PHF



PHT/90893JD02/015: Front View of EUT



PHT/90893JD02/016: Back View of EUT



PHT/90893JD02/017: Left Hand View Side of EUT



PHT/90893JD02/018: Right Hand Side View of EUT



PHT/90893JD02/019: Top View of EUT



PHT/90893JD02/020: Bottom View of EUT



PHT/90893JD02/021: Internal view of WWAN Radiated Sample (SN: CB5121Z4FW)



PHT/90893JD02/022: Internal view of WWAN Radiated Sample (SN: CB5121Z4FD)



PHT/90893JD02/023: Internal view of WWAN Radiated Sample (SN: CB5121Z4FZ)



PHT/90893JD02/024: Internal view of WLAN Radiated Sample (SN: CB5121Z4FG)



PHT/90893JD02/025: Internal view of WLAN Radiated Sample (SN: CB5121Z4EQ)



PHT/90893JD02/026: Internal view of WWAN Conducted Sample (SN: CB5121Z4EX)



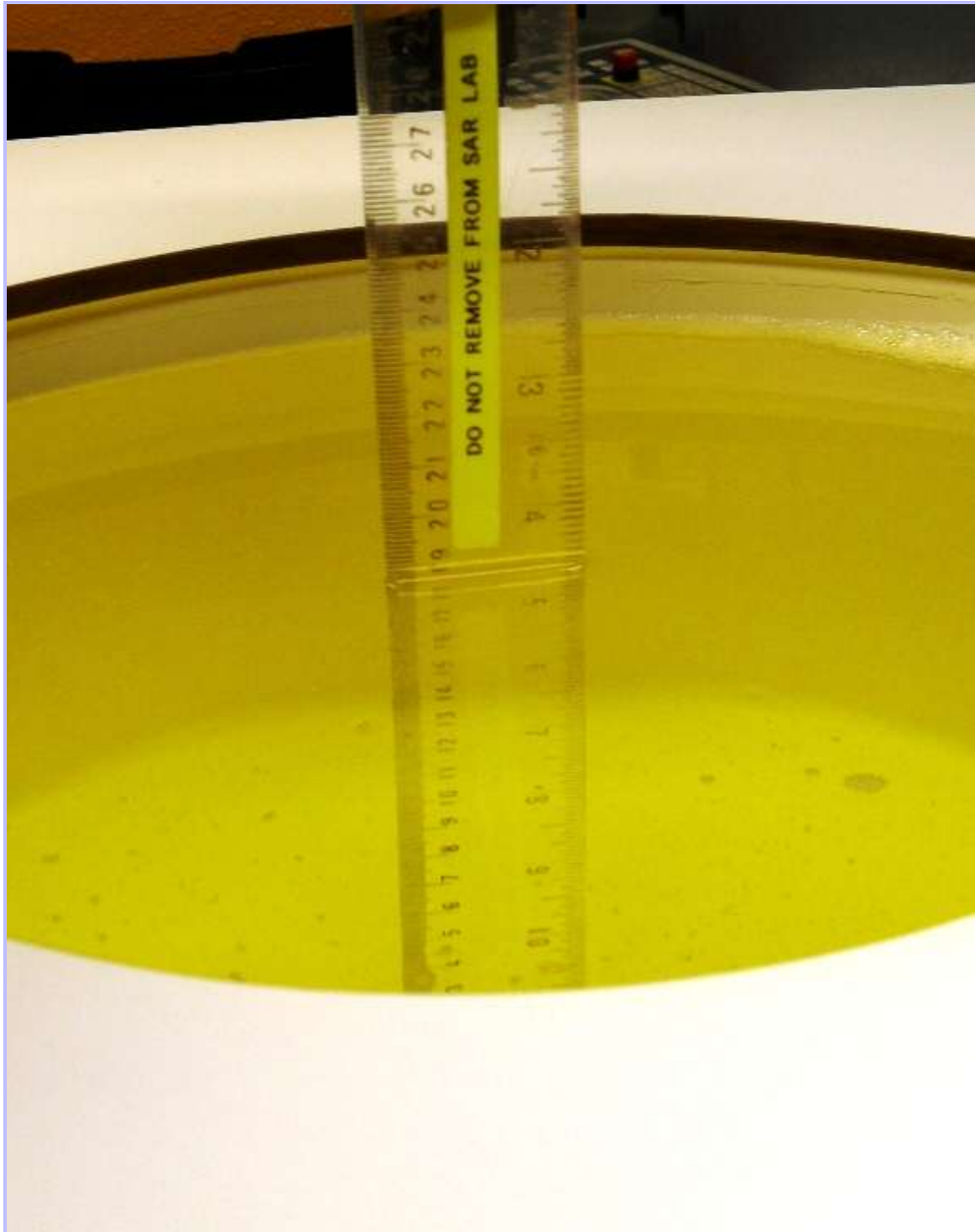
PHT/90893JD02/027: Internal view of WLAN Conducted Sample (SN: CB5121Z4EG)



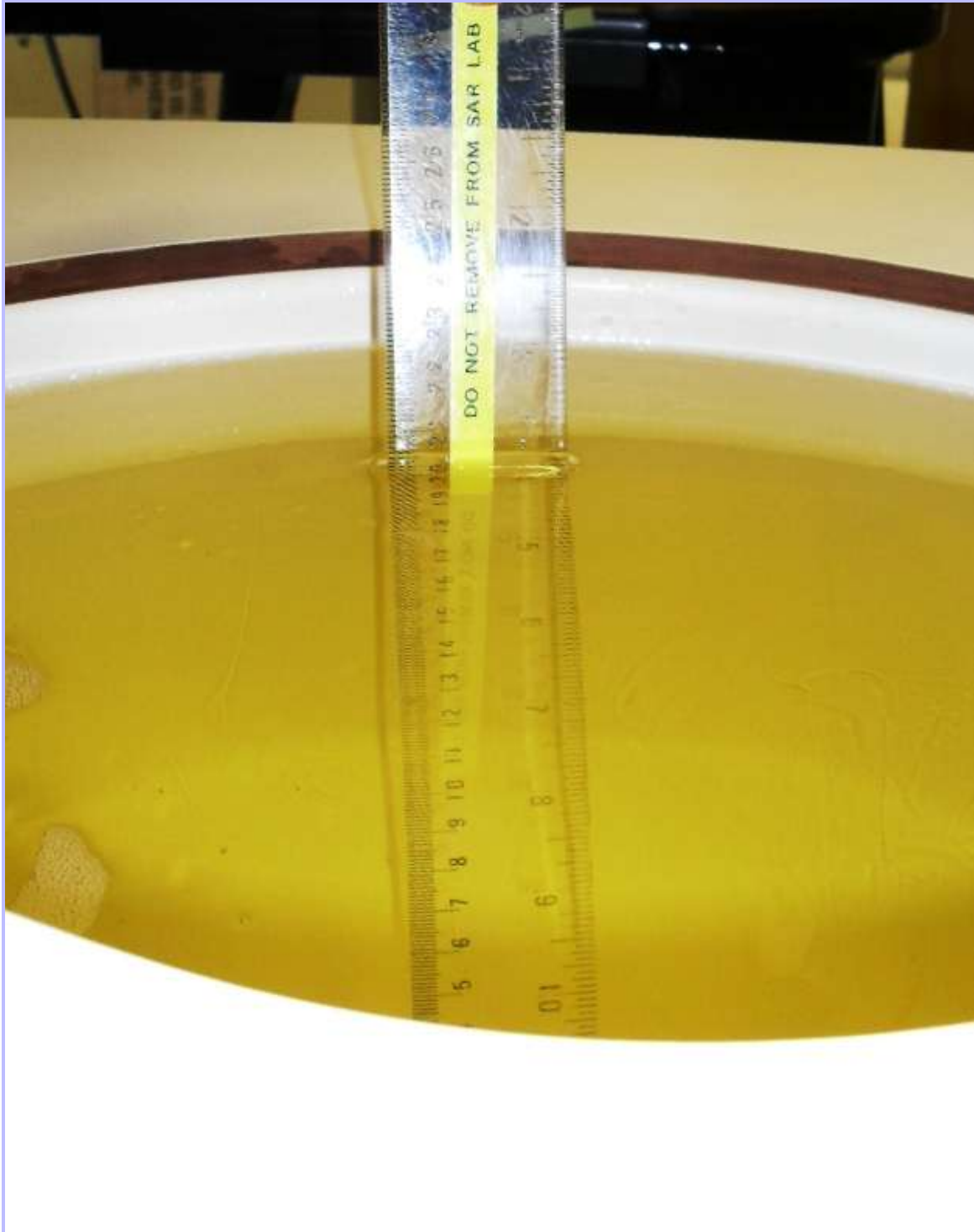
PHT/90893JD02/028: PHF View



PHT/90893JD02/029: 900 MHz Head Fluid Level



PHT/90893JD02/030: 900 MHz Body Fluid Level



PHT/90893JD02/031: 1900 MHz Head Fluid Level



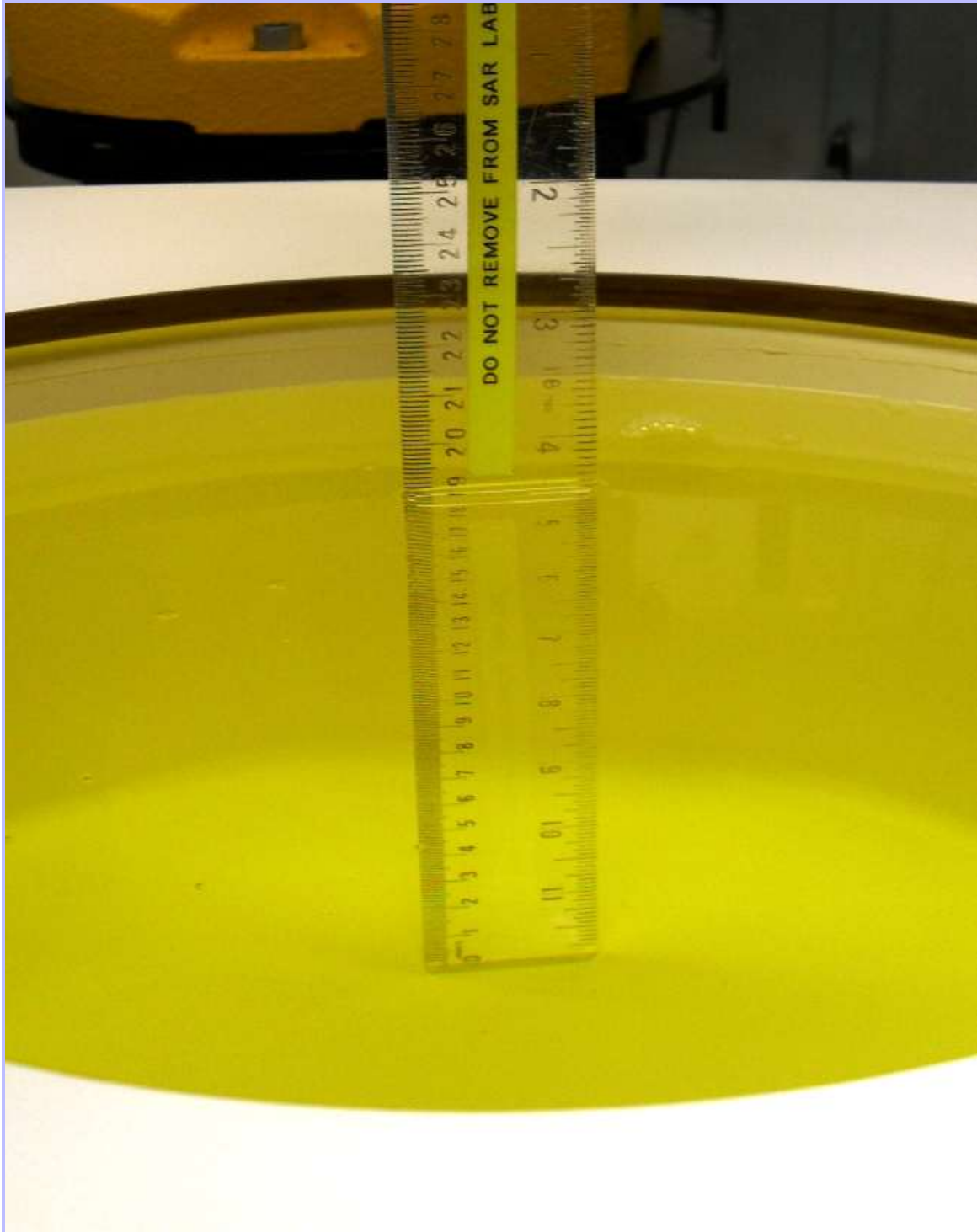
PHT/90893JD02/032: 1900 MHz Body Fluid Level



PHT/90893JD02/033: 2450 MHz Head Fluid Level



PHT/90893JD02/034: 2450 MHz Body Fluid Level



PHT/90893JD02/035: 5.0GHz Head Fluid Level



PHT/90893JD02/036: 5.0 GHz Body Fluid Level

