

Annex C Photo documentation

Appendix to Test Report No.: 1-4254/12-49-02-A



Testing Laboratory

CETECOM ICT Services GmbH

Untertürkheimer Straße 6 – 10

66117 Saarbrücken/Germany

Phone: + 49 681 5 98 - 0

Fax: + 49 681 5 98 - 9075

Internet: <http://www.cetecom.com>

e-mail: ict@cetecom.com

Accredited Test Laboratory:

The testing laboratory (area of testing) is accredited according to DIN EN ISO/IEC 17025 (2005) by the Deutsche Akkreditierungsstelle GmbH (DAkkS)

The accreditation is valid for the scope of testing procedures as stated in the accreditation certificate with the registration number: D-PL-12076-01-01

Photo 1: Measurement System DASY 5

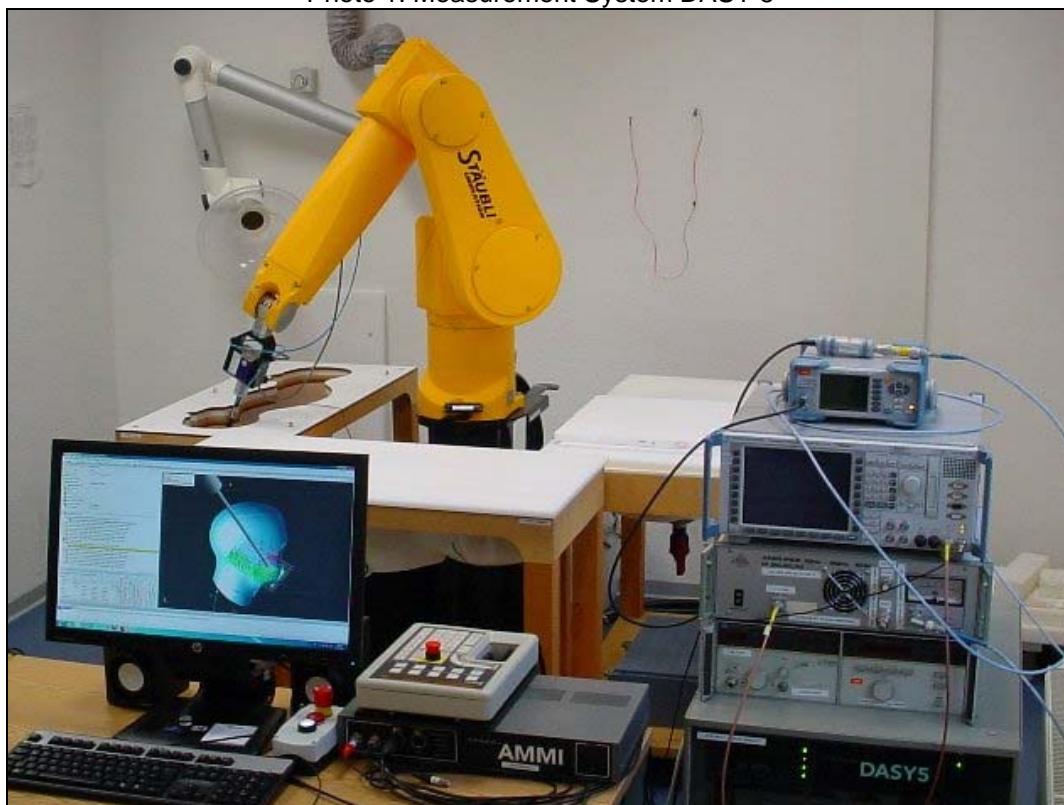


Photo 2: DUT - front view

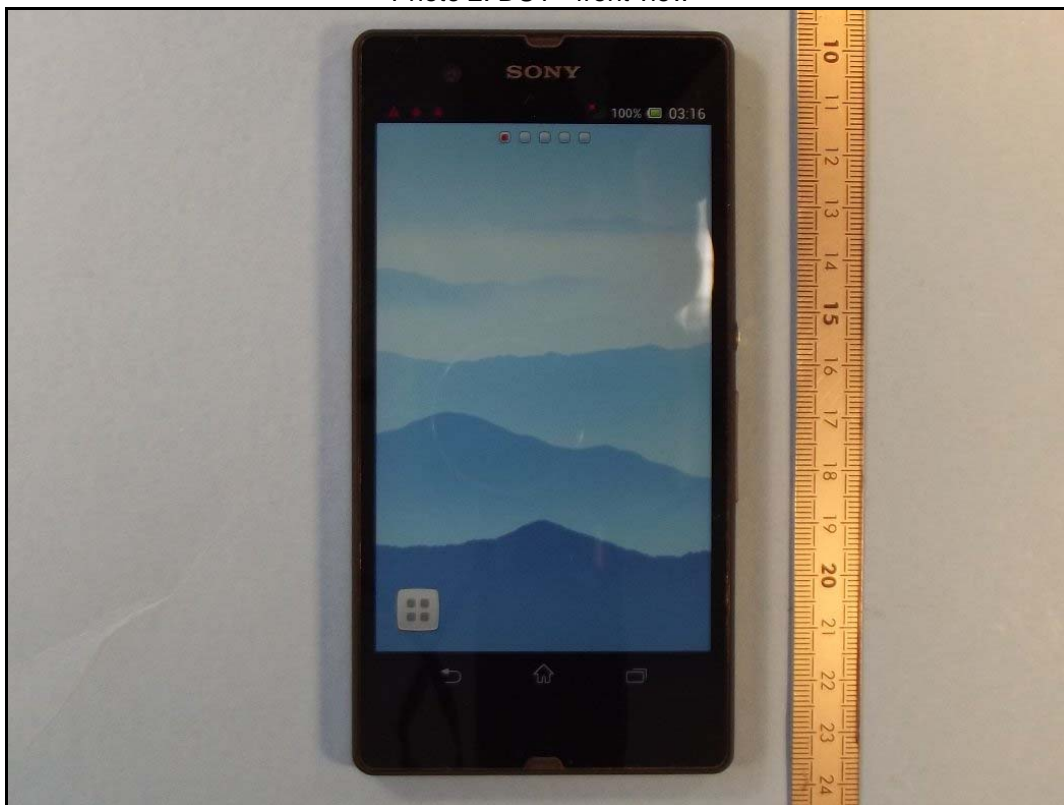


Photo 3: DUT - rear view

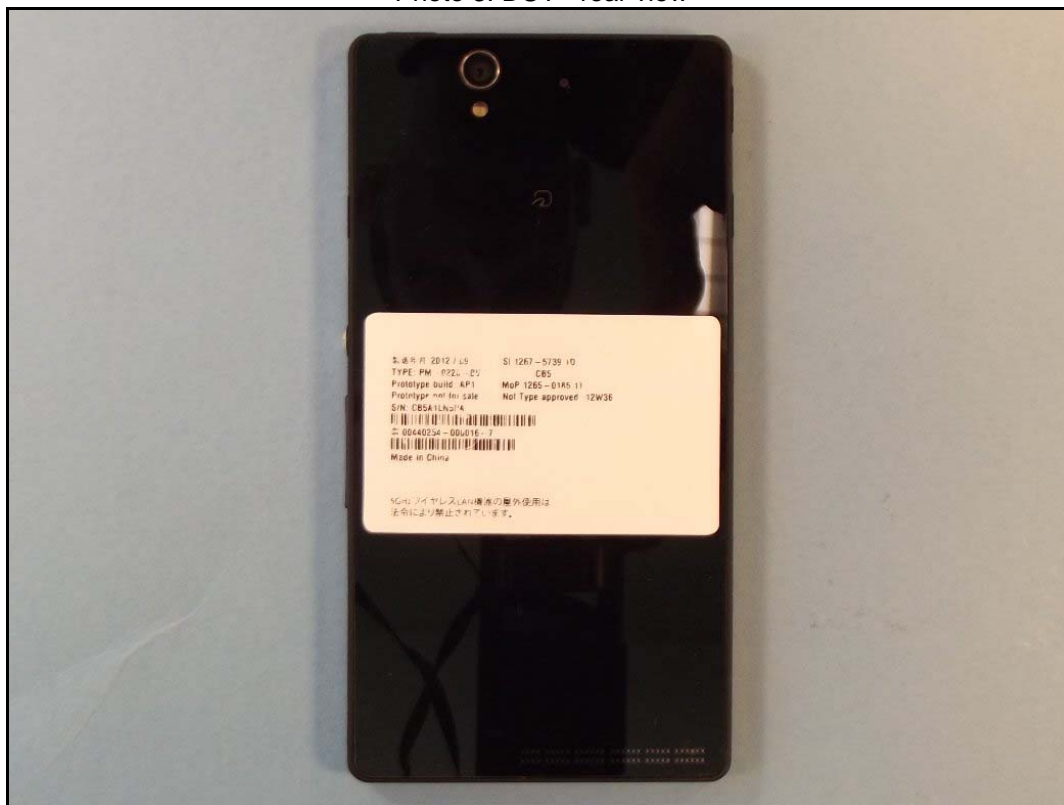


Photo 4: DUT - rear view (label)

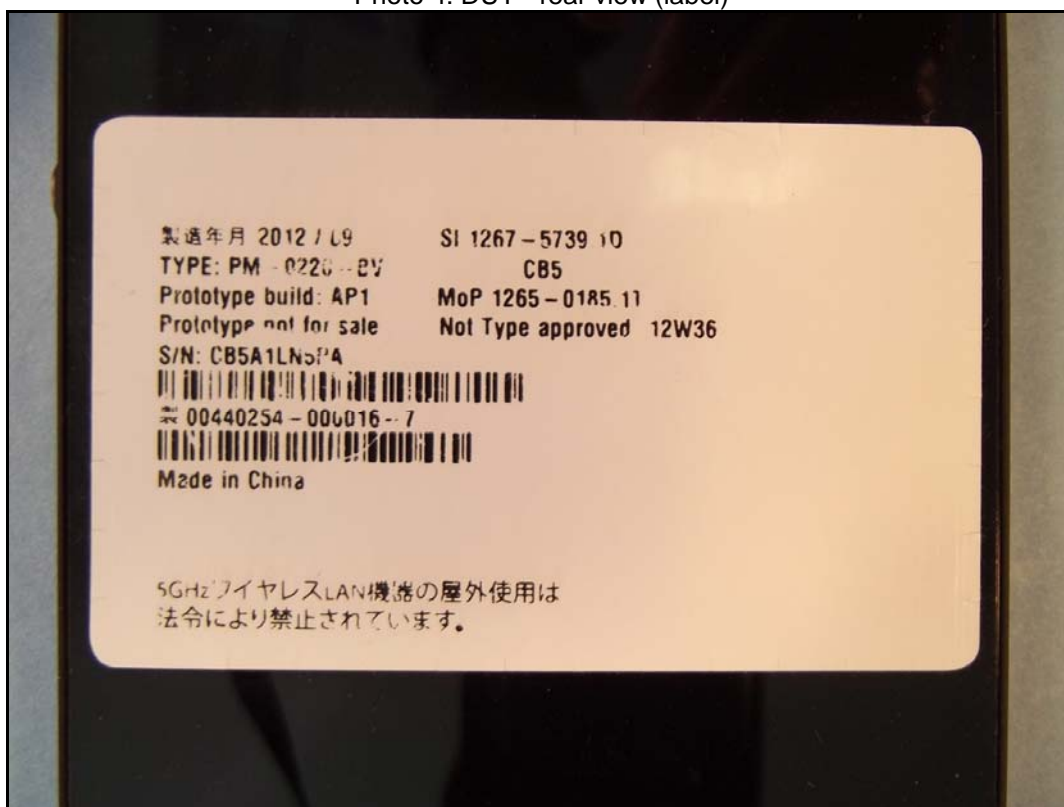


Photo 5: DUT - side view



Photo 6: Test position left hand touched

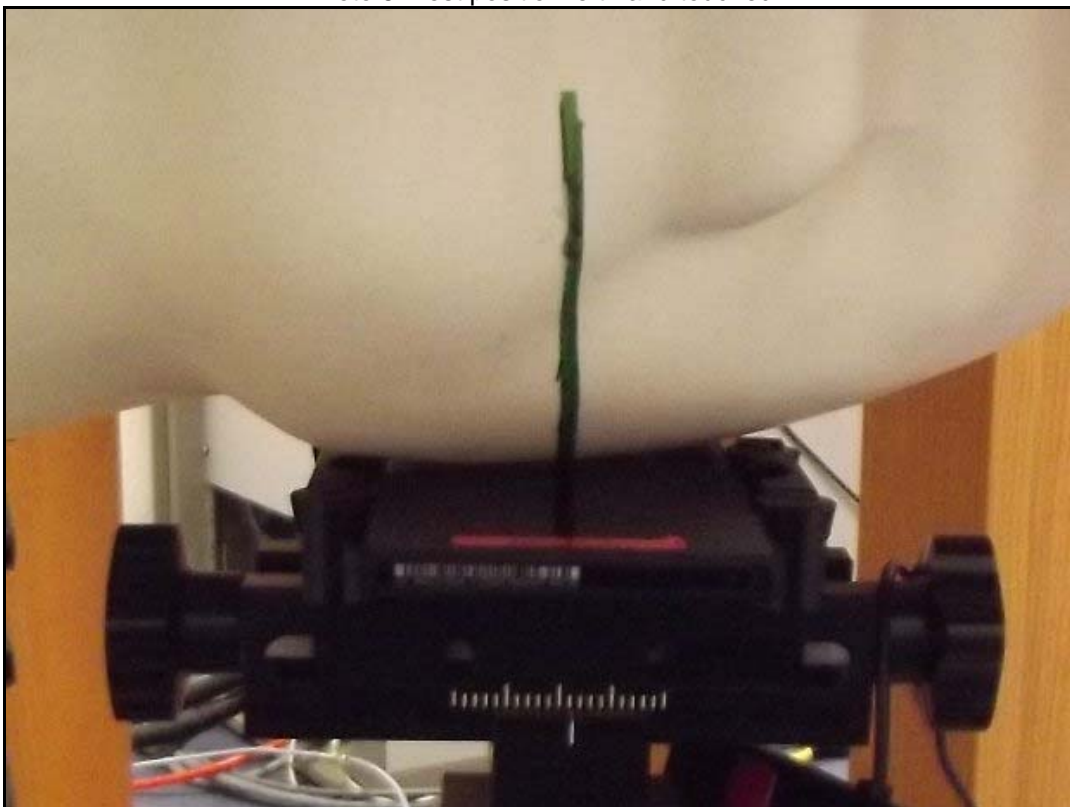


Photo 7: Test position left hand touched



Photo 8: Test position left hand touched



Photo 9: Test position left hand tilted 15°



Photo 10: Test position left hand tilted 15°



Photo 11: Test position right hand touched

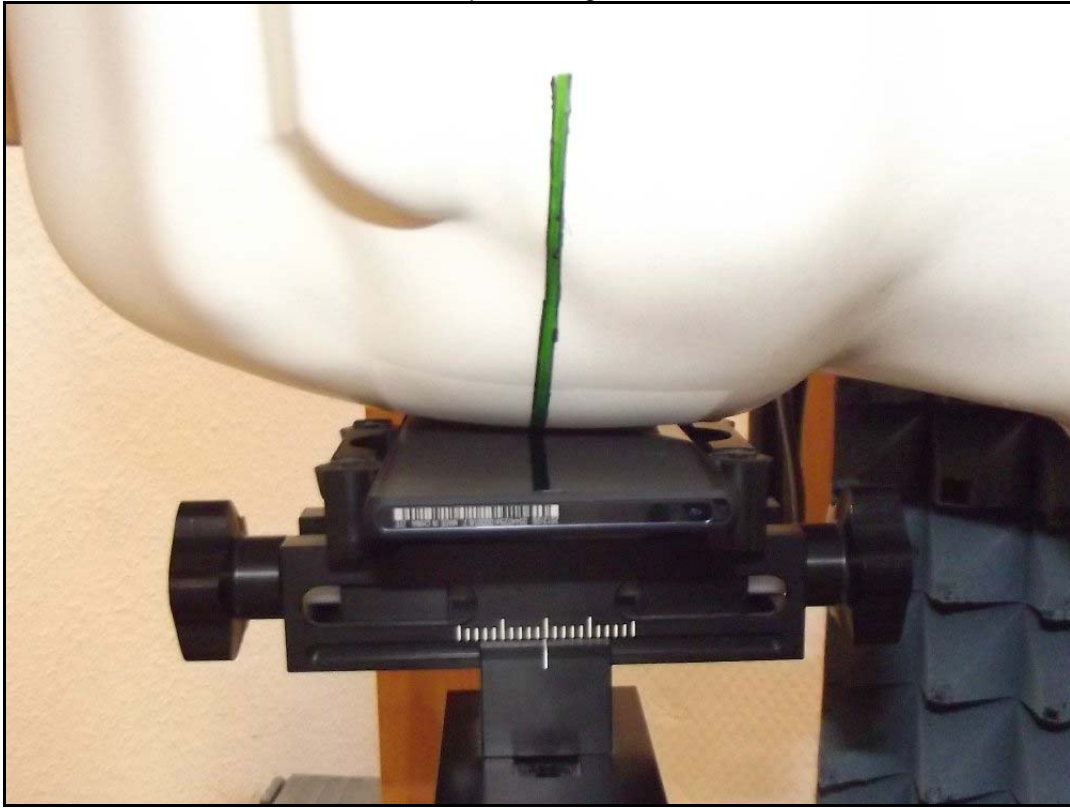


Photo 12: Test position right hand touched



Photo 13: Test position right hand touched



Photo 14: Test position right hand tilted 15°

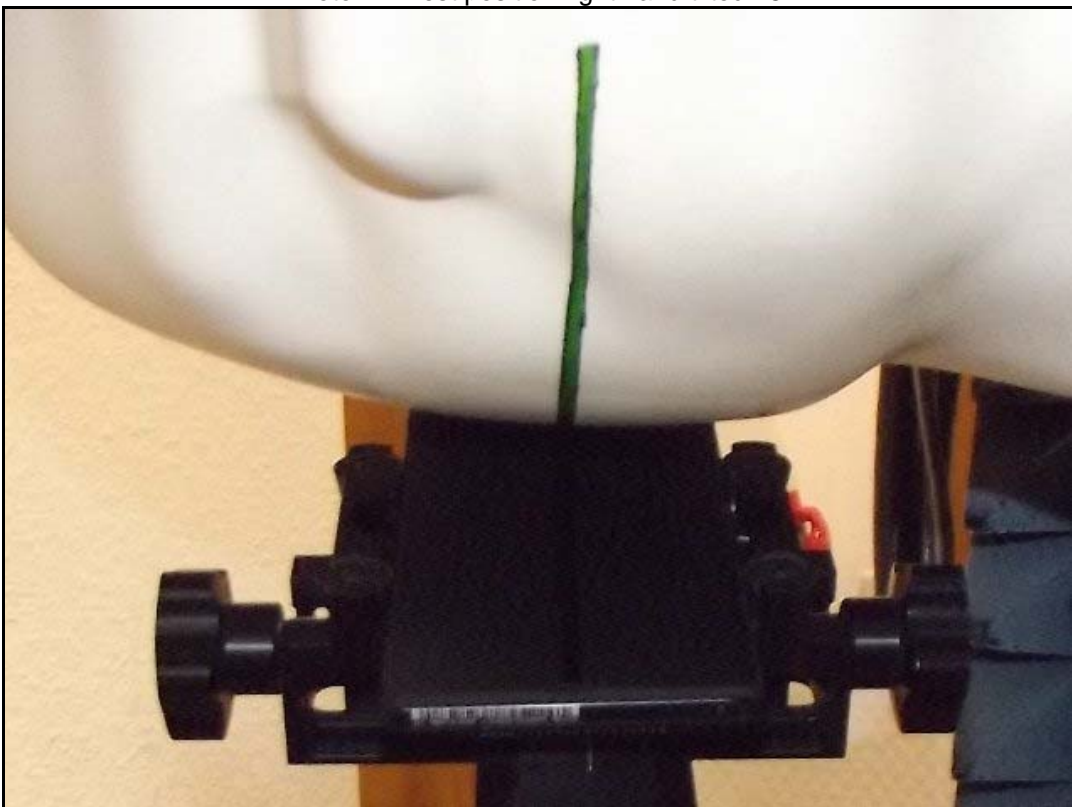


Photo 15: Test position right hand tilted 15°

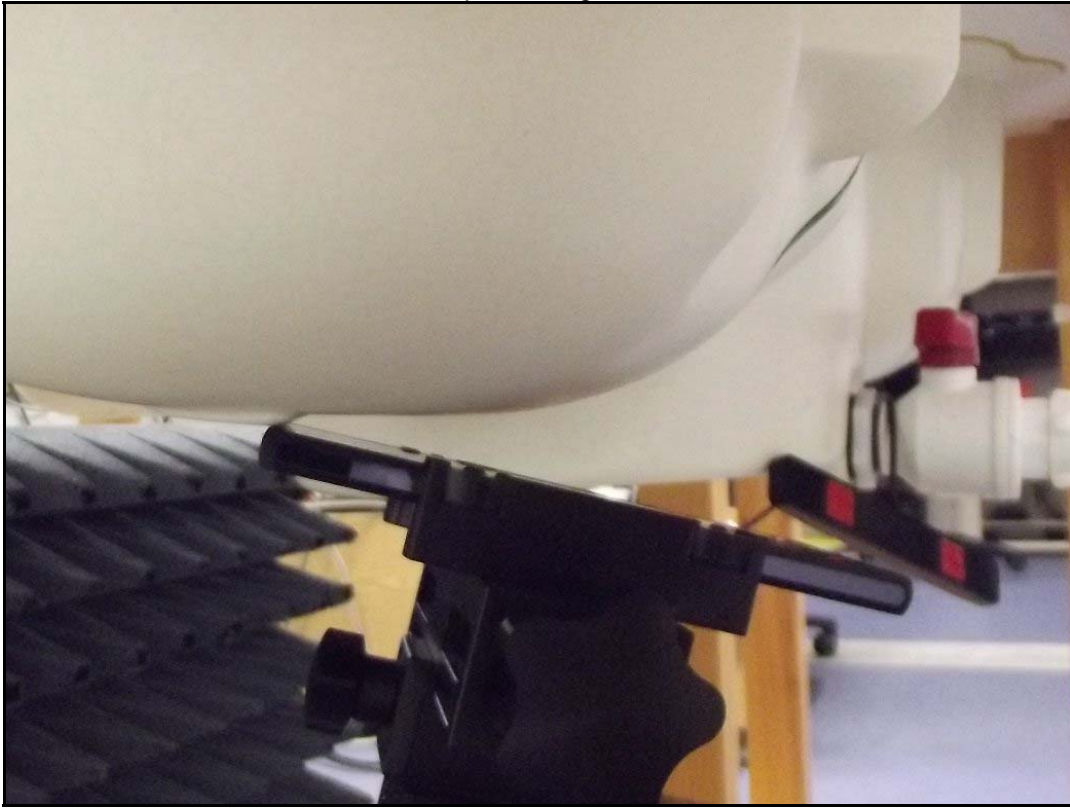


Photo 16: Test body position front side with 15 mm distance



Photo 17: Test body position rear side with 15 mm distance



Photo 18: Test body position front side with 15 mm distance and headset



Photo 19: Test body position front side with 10 mm distance



Photo 20: Test body position rear side with 10 mm distance



Photo 21: Test body position left edge side with 10 mm distance

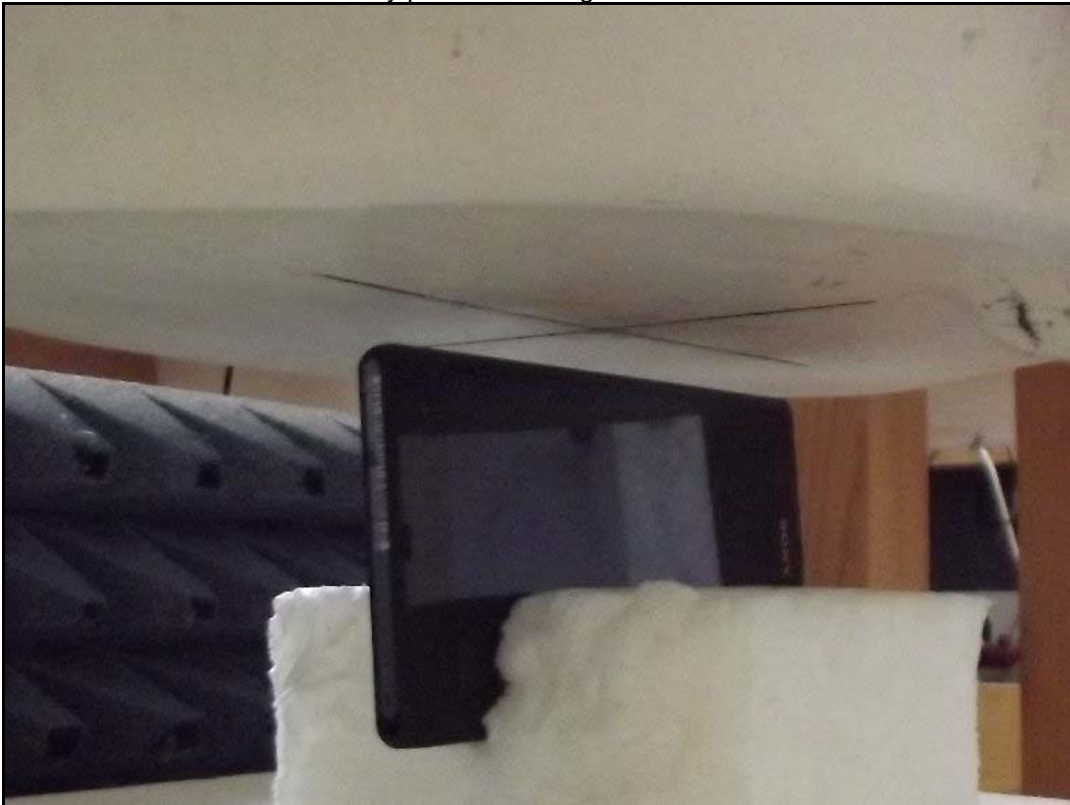


Photo 22: Test body position right edge side with 10 mm distance



Photo 23: Test body position top edge side with 10 mm distance



Photo 24: Test body position bottom edge side with 10 mm distance

