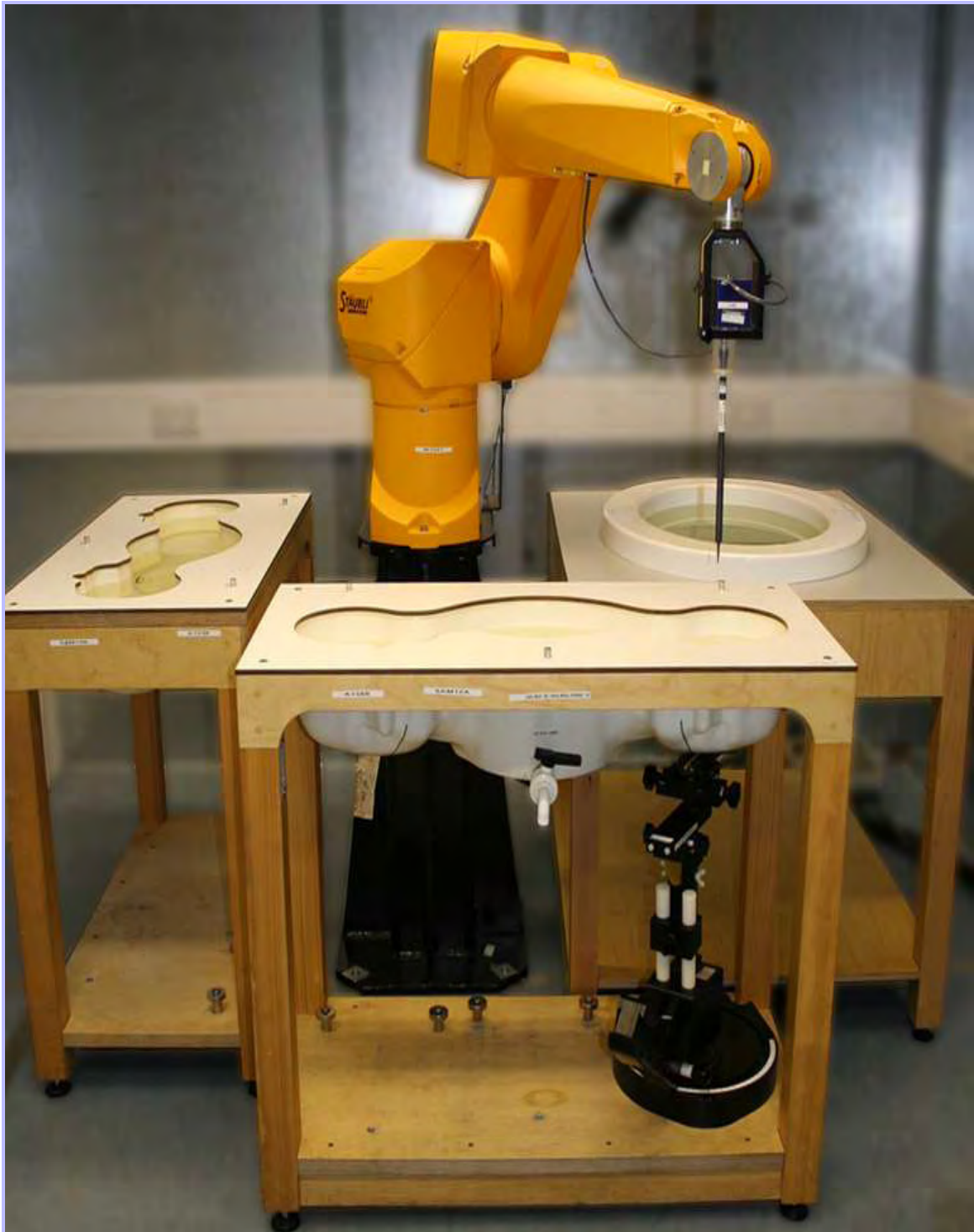


Appendix 4. Photographs

This appendix contains the following photographs:

Photo Reference Number	Title
PHT/87207JD02A/001	Test configuration for the measurement of Specific Absorption Rate (SAR)
PHT/87207JD02A/002	Touch Left
PHT/87207JD02A/003	Tilt Left
PHT/87207JD02A/004	Touch Right
PHT/87207JD02A/005	Tilt Right
PHT/87207JD02A/006	Front of EUT facing Phantom at 10mm
PHT/87207JD02A/007	Front of EUT facing Phantom at 15mm
PHT/87207JD02A/008	Back of EUT facing Phantom at 10mm
PHT/87207JD02A/009	Back of EUT facing Phantom at 15mm
PHT/87207JD02A/010	Left Hand Side of EUT Facing Phantom
PHT/87207JD02A/011	Right Hand Side of EUT Facing Phantom
PHT/87207JD02A/012	Top of EUT Facing Phantom
PHT/87207JD02A/013	Bottom of EUT Facing Phantom
PHT/87207JD02A/014	General Set Up for PHF
PHT/87207JD02A/015	Front View of EUT
PHT/87207JD02A/016	Back View of EUT
PHT/87207JD02A/017	Top View of EUT
PHT/87207JD02A/018	Bottom View of EUT
PHT/87207JD02A/019	Left Hand Side View of EUT
PHT/87207JD02A/020	Right Hand Side View of EUT
PHT/87207JD02A/021	Internal view of WWAN Radiated Sample (CB5A1K9RSP)
PHT/87207JD02A/022	Internal view of WWAN Radiated Sample (CB5A1K9RQ5)
PHT/87207JD02A/023	Internal view of WLAN Radiated Sample (CB5A1K9RTZ)
PHT/87207JD02A/024	Internal view of WWAN Conducted Sample (CB5A1KA6AS)
PHT/87207JD02A/025	Internal view of WLAN Conducted Sample (CB5A1K9RQP)
PHT/87207JD02A/026	PHF View
PHT/87207JD02A/027	Battery View
PHT/87207JD02A/028	900 MHz Head Fluid Level
PHT/87207JD02A/029	900 MHz Body Fluid Level
PHT/87207JD02A/030	1900 MHz Head Fluid Level
PHT/87207JD02A/031	1900 MHz Body Fluid Level
PHT/87207JD02A/032	2450 MHz Head Fluid Level
PHT/87207JD02A/033	2450 MHz Body Fluid Level

PHT/87207JD02A/001: Test configuration for the measurement of Specific Absorption Rate (SAR)



PHT/87207JD02A/002: Touch Left



PHT/87207JD02A/003: Tilt Left



PHT/87207JD02A/004: Touch Right



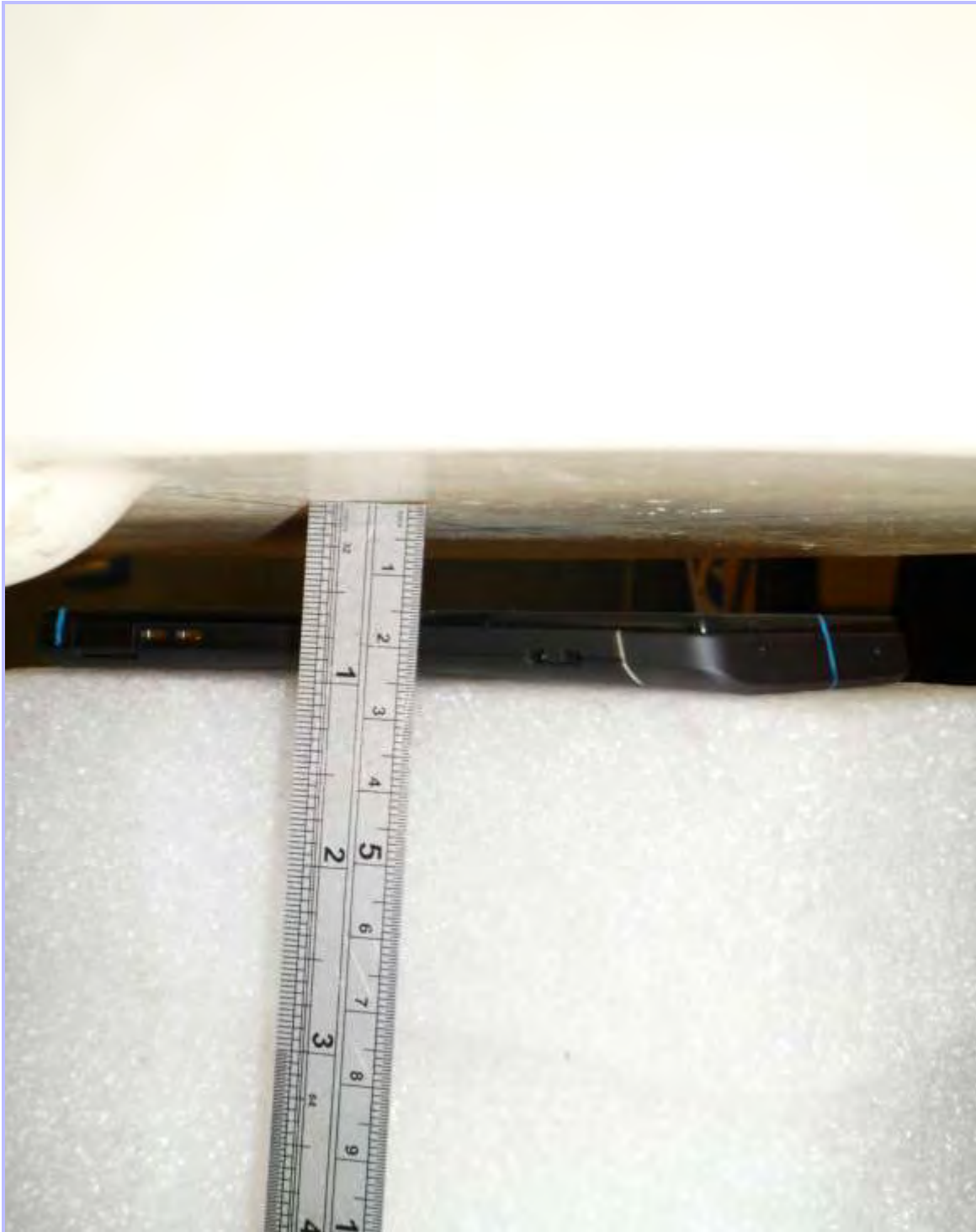
PHT/87207JD02A/005: Tilt Right



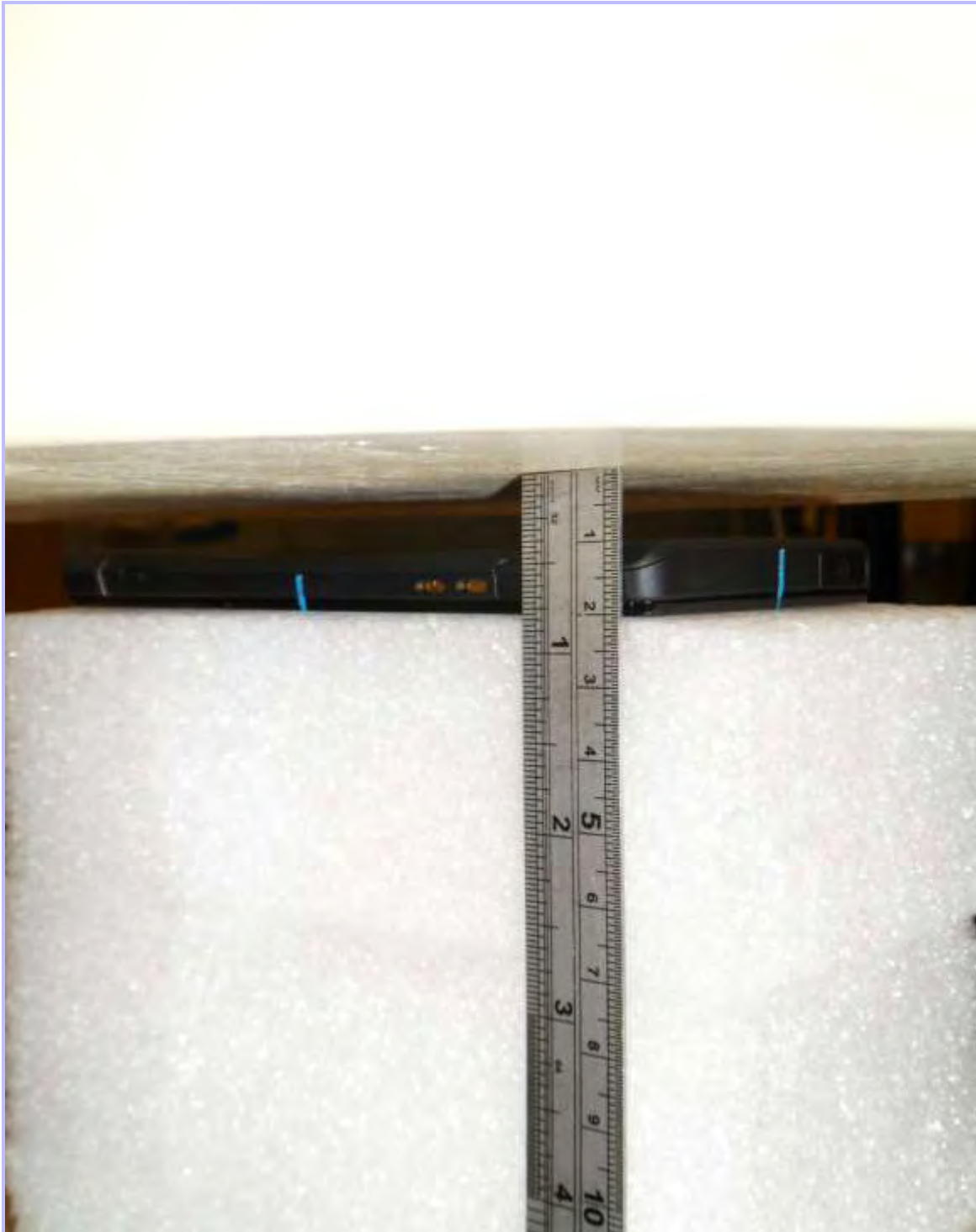
PHT/87207JD02A/006: Front of EUT facing Phantom at 10mm



PHT/87207JD02A/007: Front of EUT facing Phantom at 15mm



PHT/87207JD02A/008: Back of EUT facing Phantom at 10mm



PHT/87207JD02A/009: Back of EUT facing Phantom at 15mm



PHT/87207JD02A/010: Left Hand Side of EUT Facing Phantom



PHT/87207JD02A/011: Right Hand Side of EUT Facing Phantom



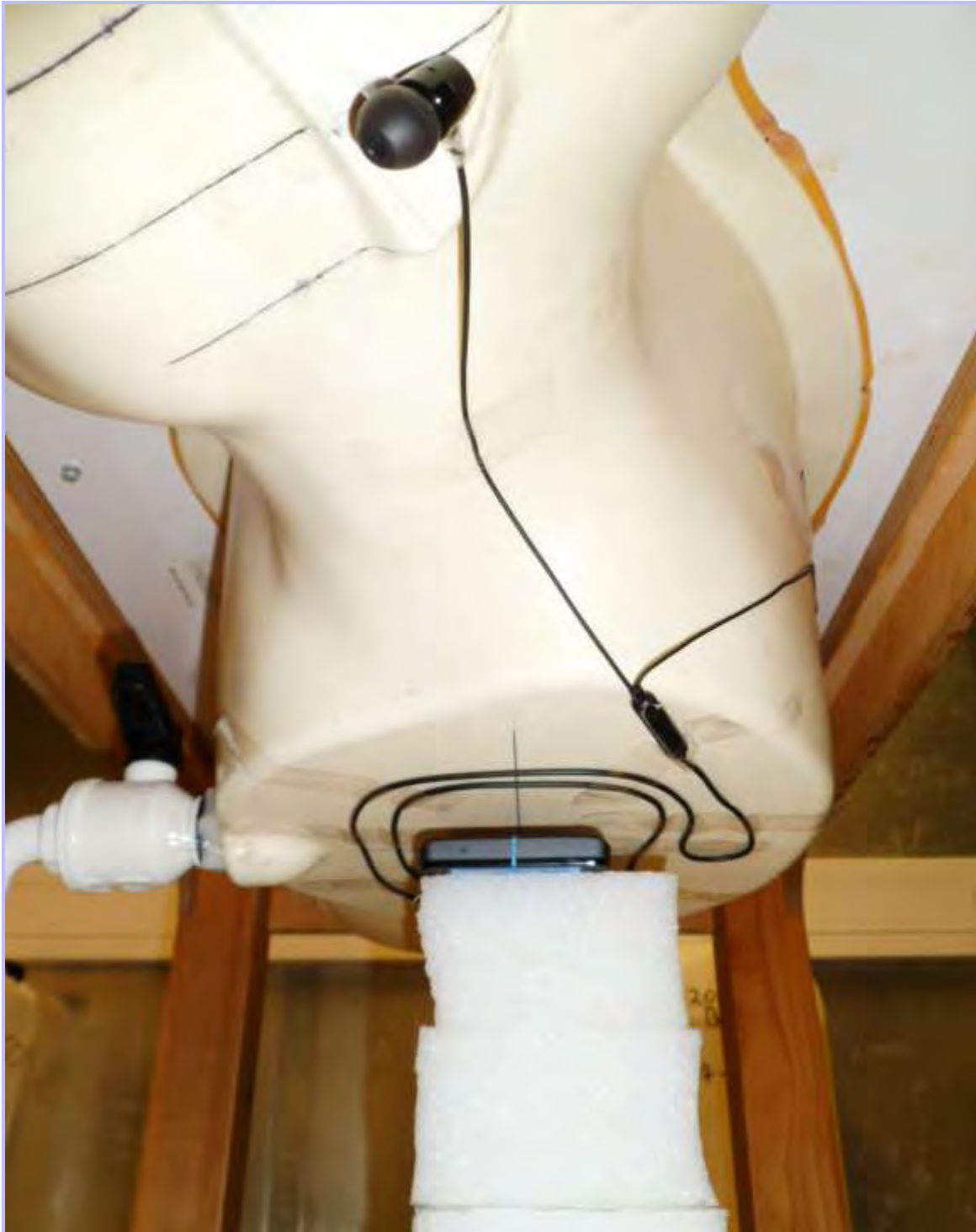
PHT/87207JD02A/012: Top of EUT Facing Phantom



PHT/87207JD02A/013: Bottom of EUT Facing Phantom



PHT/87207JD02A/014: General Set Up for PHF



PHT/87207JD02A/015: Front View of EUT



PHT/87207JD02A/016: Back View of EUT



PHT/87207JD02A/017: Top View of EUT



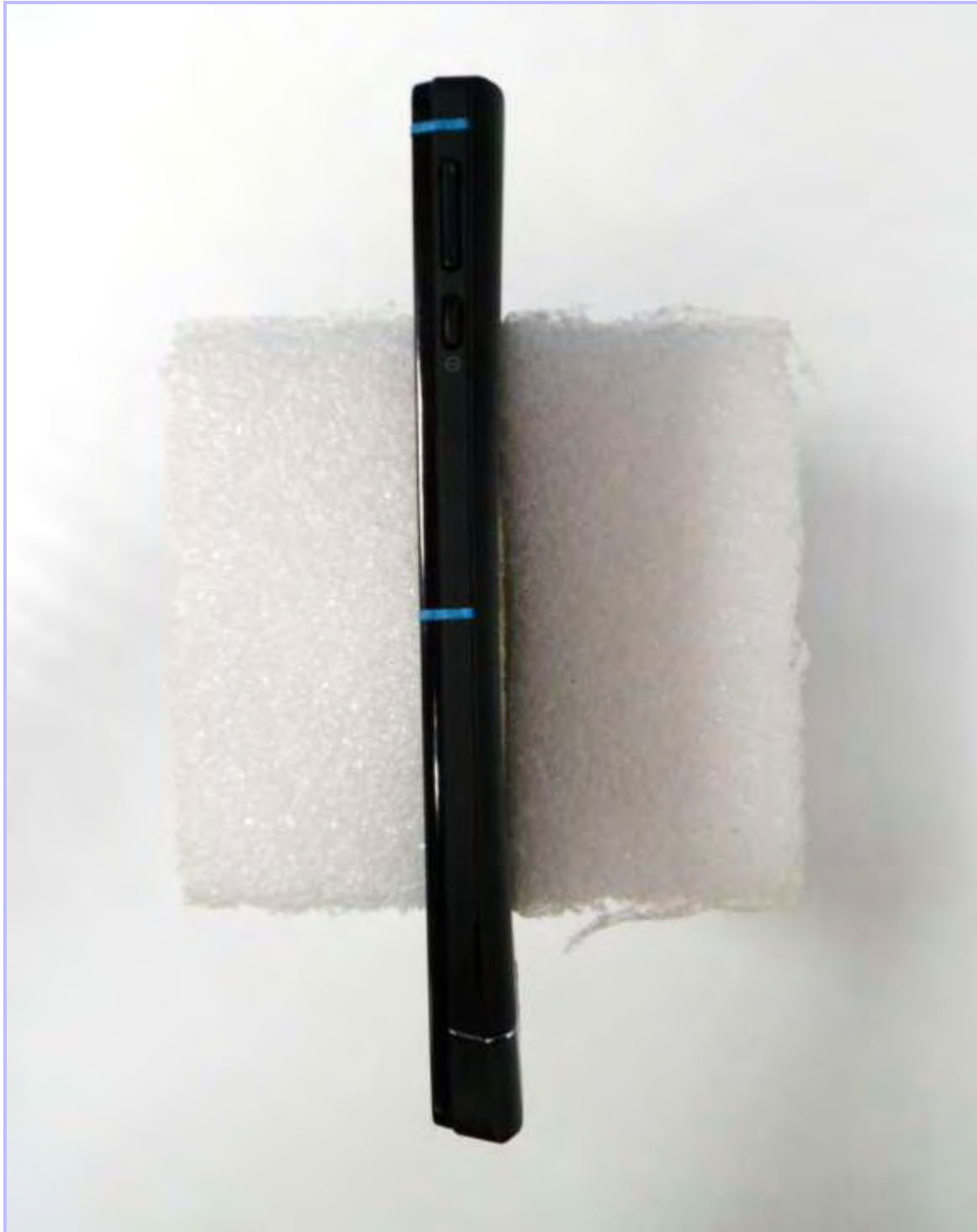
PHT/87207JD02A/018: Bottom View of EUT



PHT/87207JD02A/019: Left Hand Side View of EUT



PHT/87207JD02A/020: Right Hand Side View of EUT



PHT/87207JD02A/021: Internal view of WWAN Radiated Sample (CB5A1K9RSP)



PHT/87207JD02A/022: Internal view of WWAN Radiated Sample (CB5A1K9RQ5)



PHT/87207JD02A/023: Internal view of WLAN Radiated Sample (CB5A1K9RTZ)



PHT/87207JD02A/024: Internal view of WWAN Conducted Sample (CB5A1KA6AS)



PHT/87207JD02A/025: Internal view of WLAN Conducted Sample (CB5A1K9RQP)



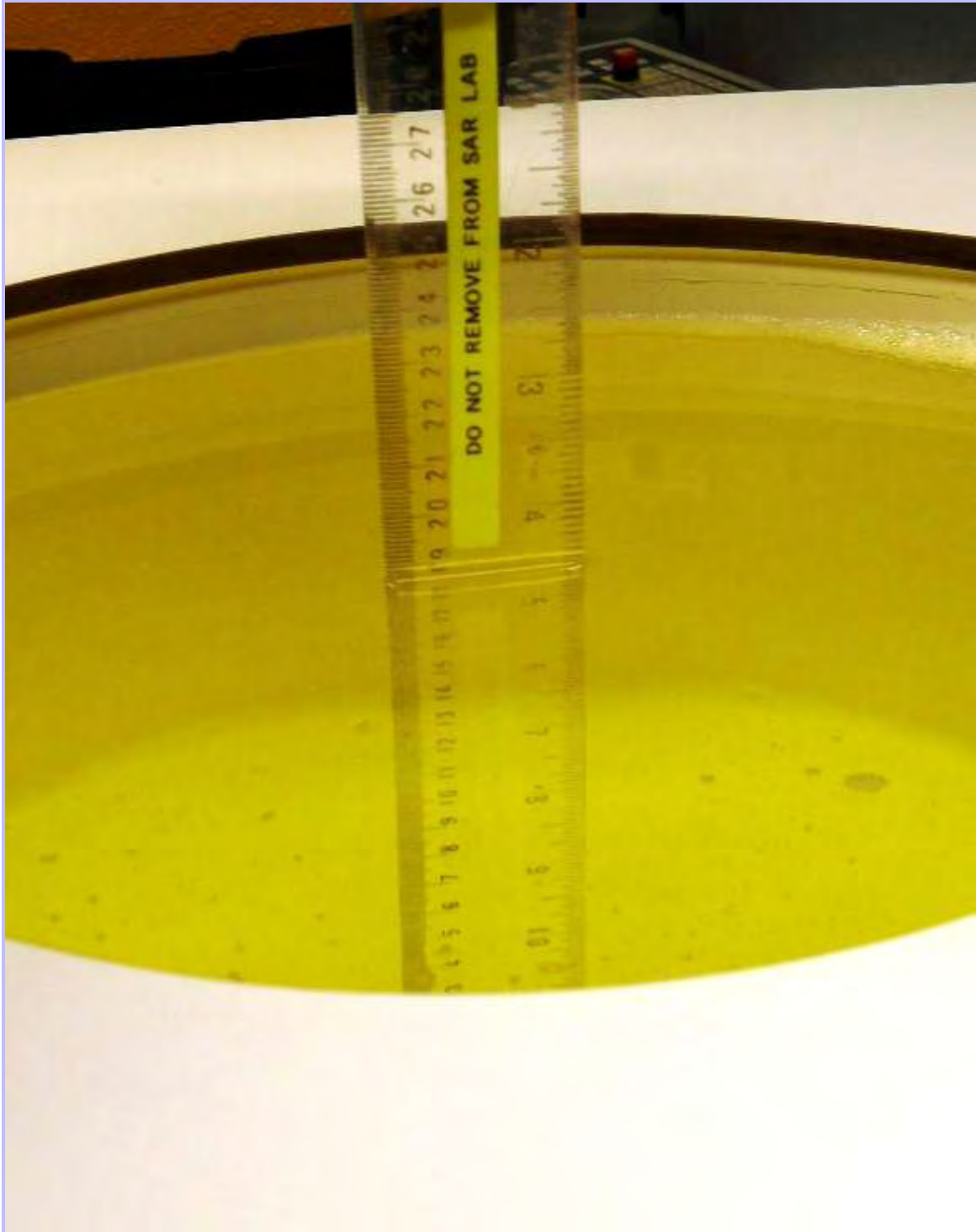
PHT/87207JD02A/026: PHF View



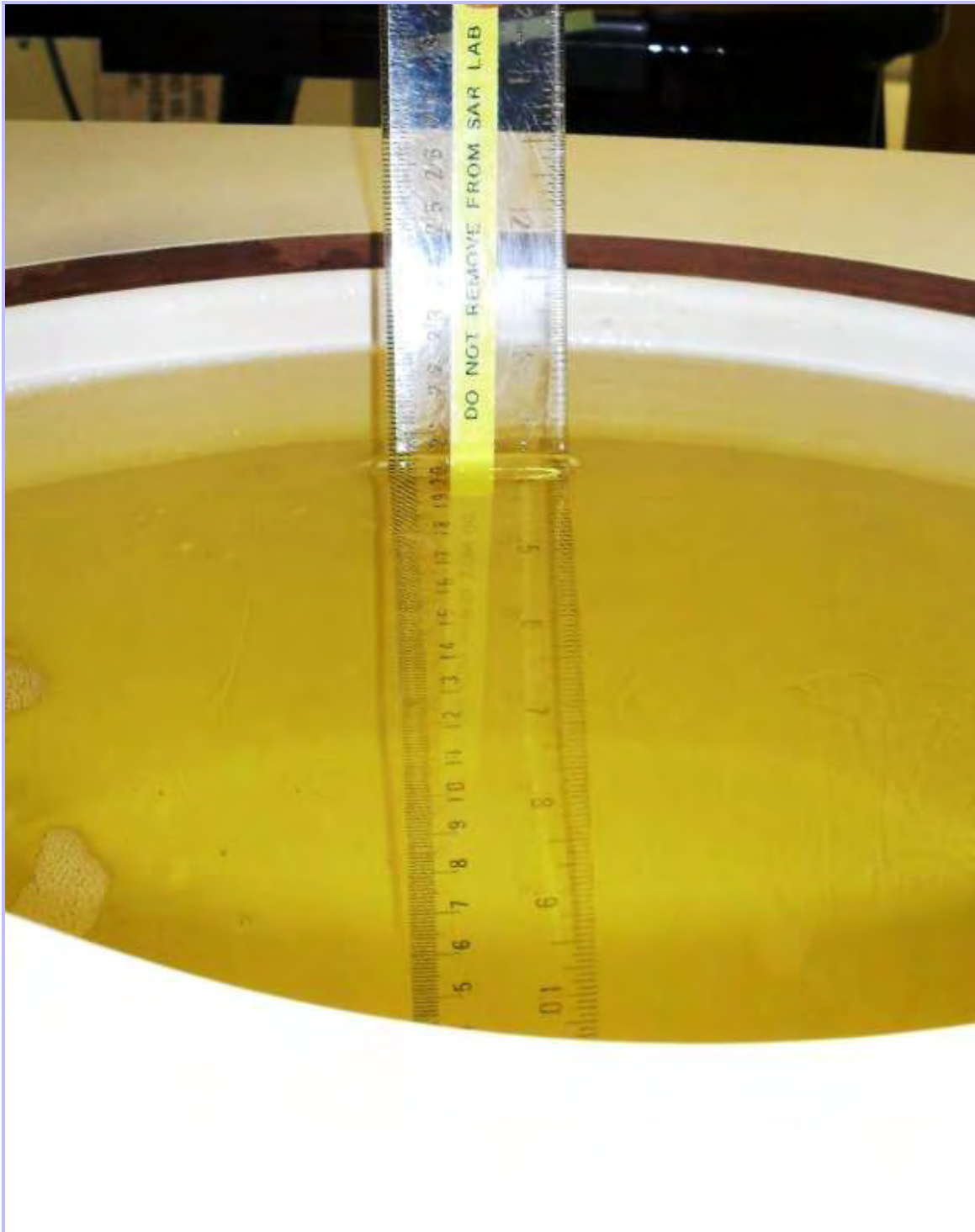
PHT/87207JD02A/027: Battery View



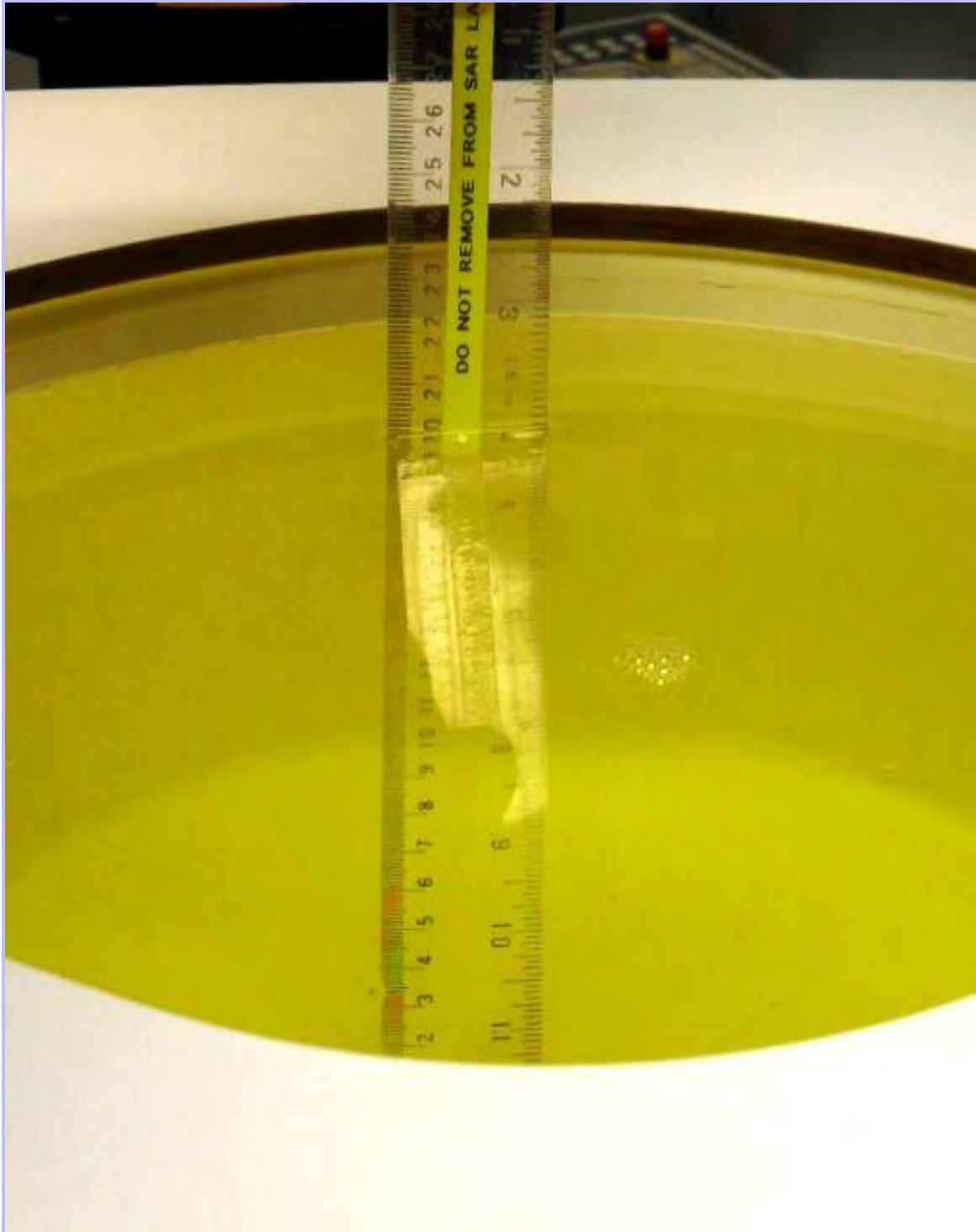
PHT/87207JD02A/028: 900 MHz Head Fluid Level



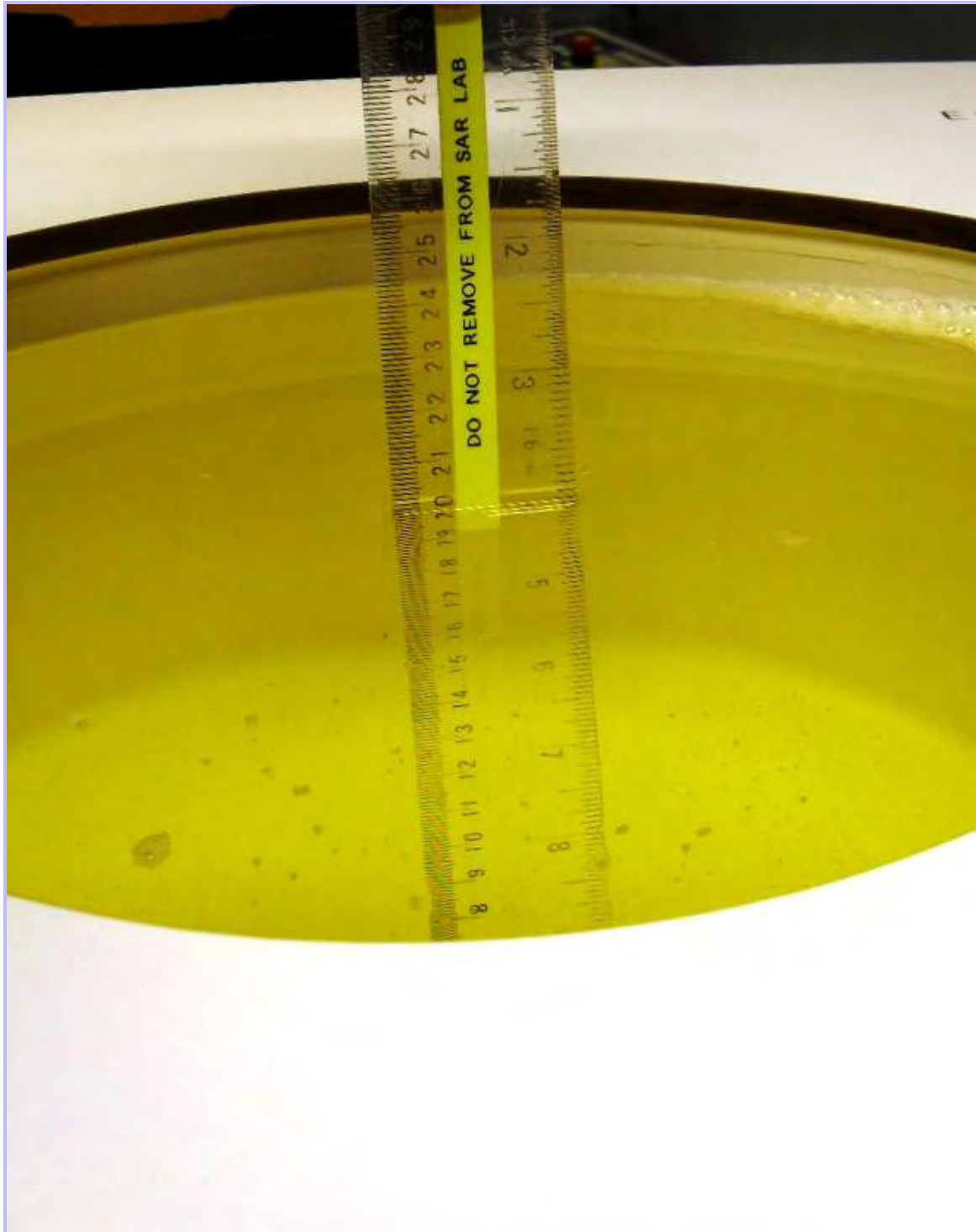
PHT/87207JD02A/029: 900 MHz Body Fluid Level



PHT/87207JD02A/030: 1900 MHz Head Fluid Level



PHT/87207JD02A/031: 1900 MHz Body Fluid Level



PHT/87207JD02A/032: 2450 MHz Head Fluid Level



PHT/87207JD02A/033: 2450 MHz Body Fluid Level

