

Annex C Internal photographs of the EUT

Photo documentation:

Photo 1: conducted unit



Photo 2: conducted unit



Photo 3: conducted unit



Photo 4: conducted unit

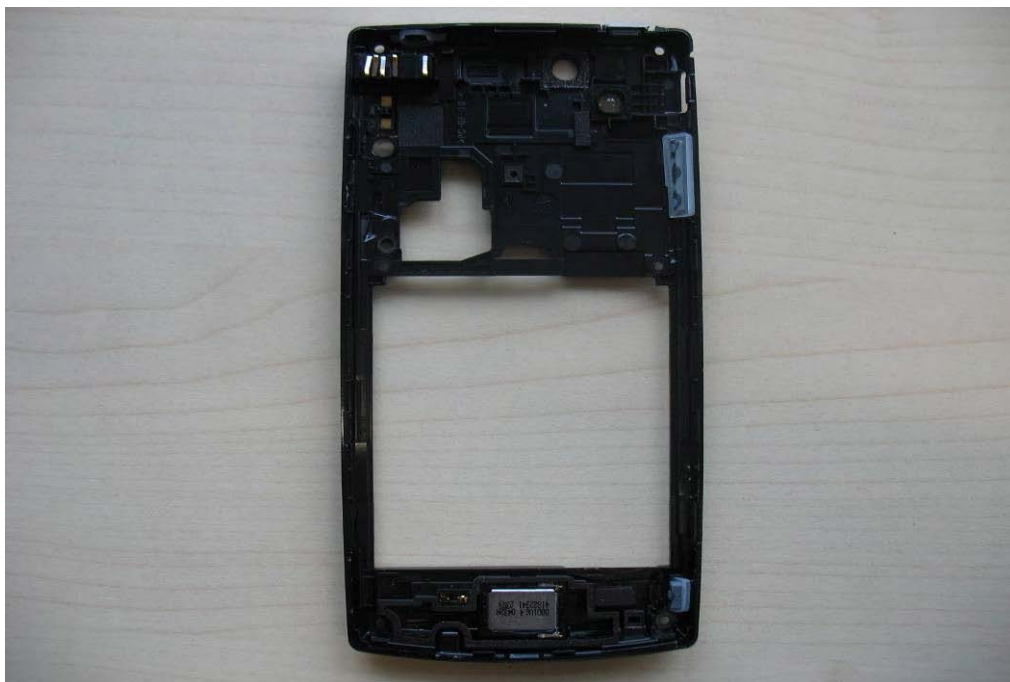


Photo 5: conducted unit

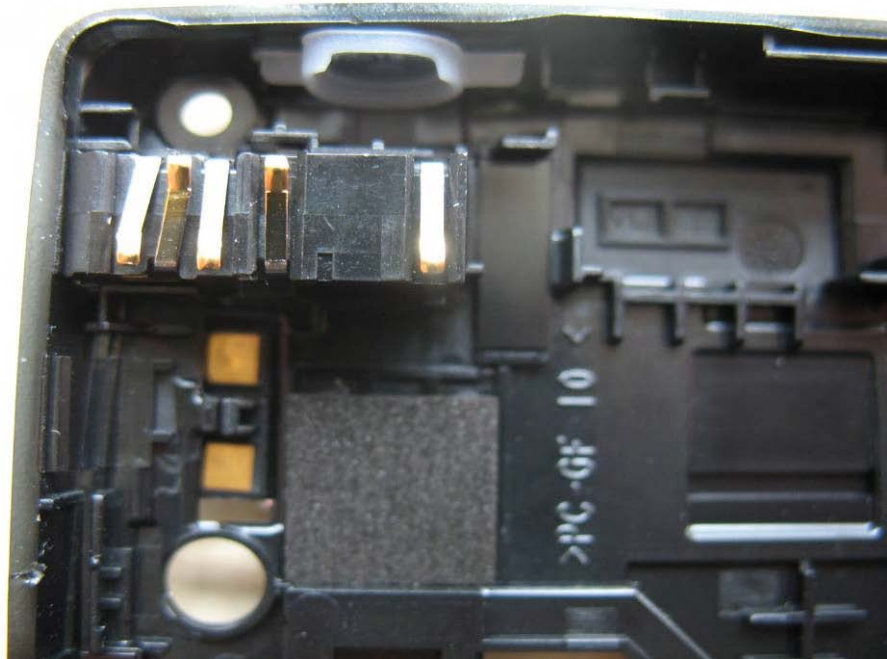


Photo 6: conducted unit



Photo 7: conducted unit



Photo 8: conducted unit

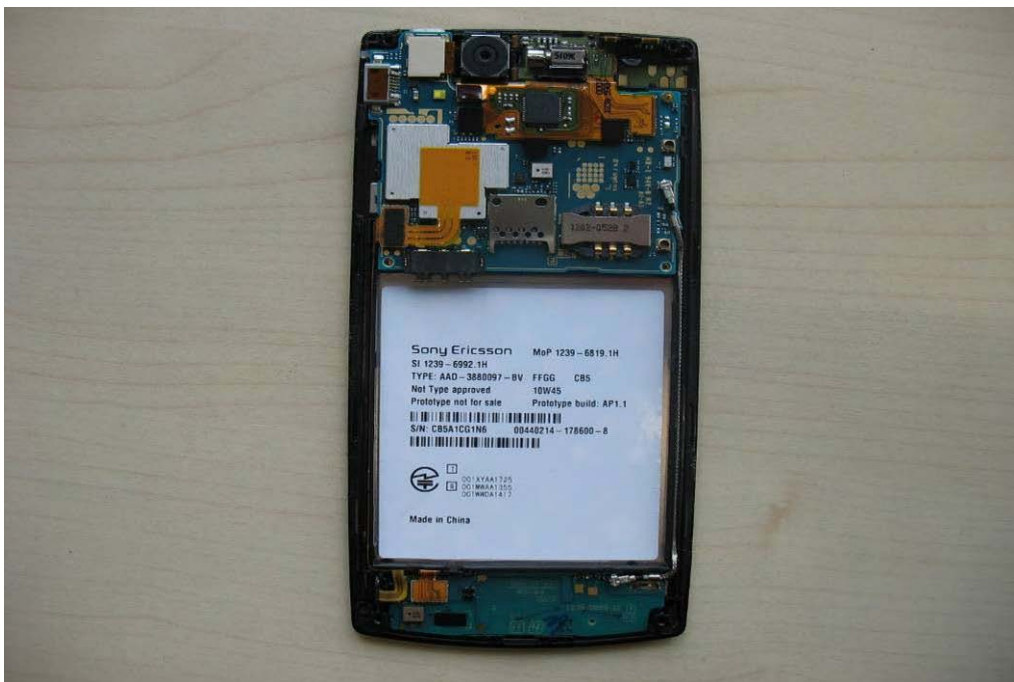


Photo 9: conducted unit



Photo 10: conducted unit

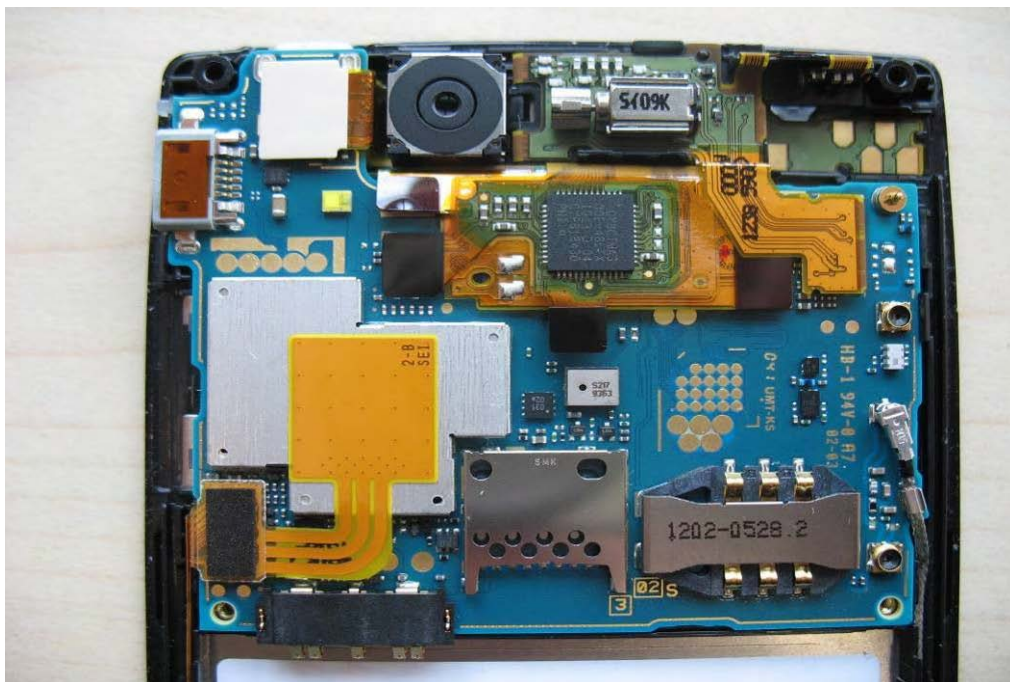


Photo 11: conducted unit



Photo 12: conducted unit



Photo 13: conducted unit

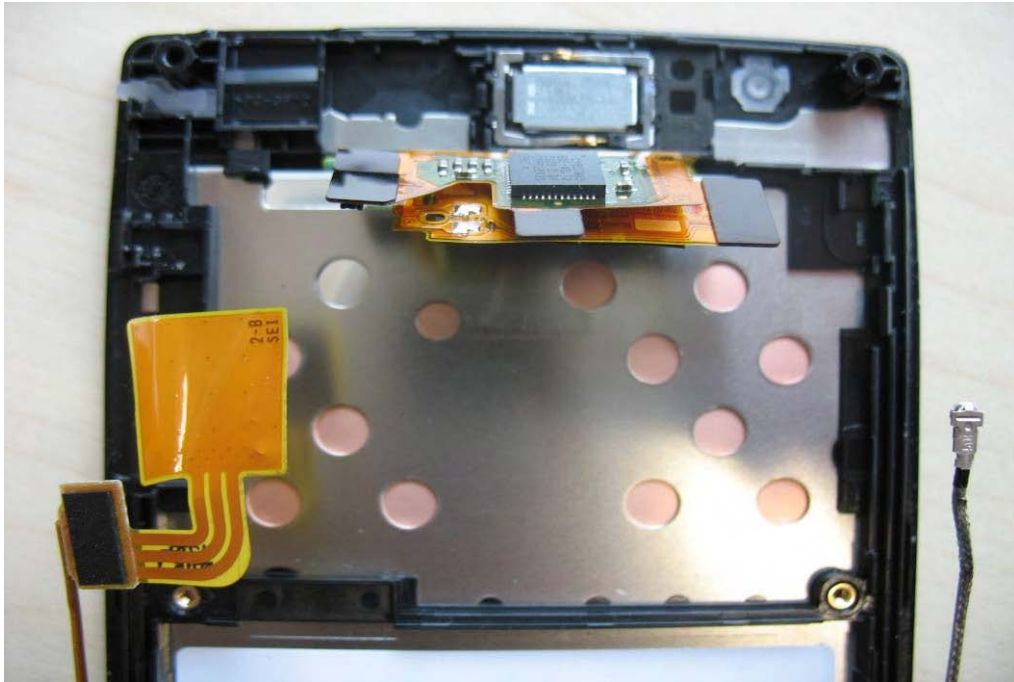


Photo 14: conducted unit



Photo 15: conducted unit

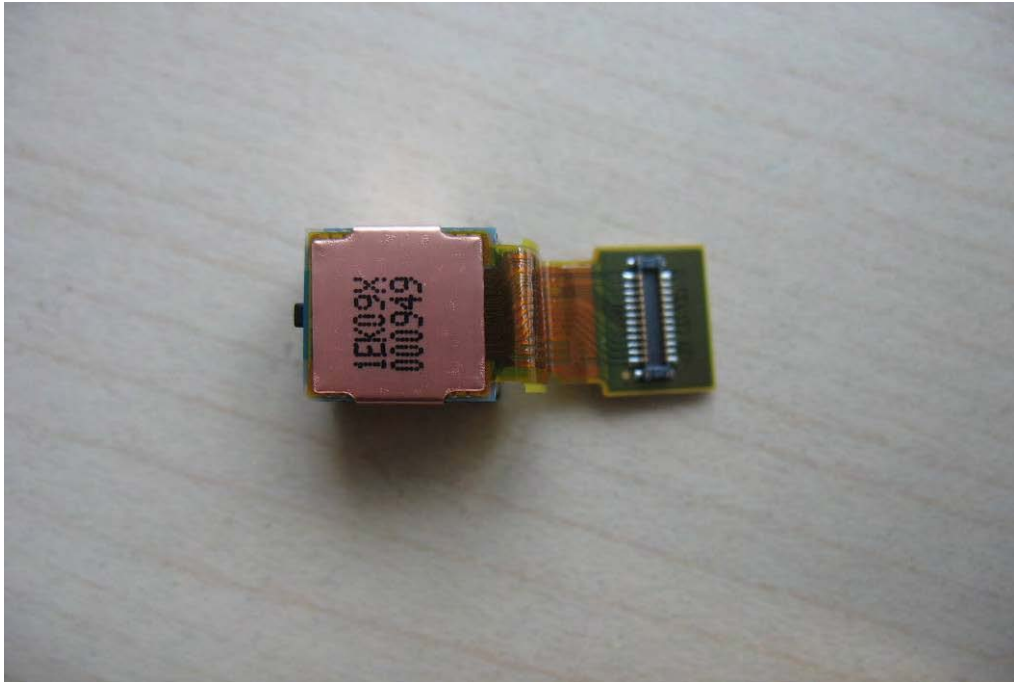


Photo 16: conducted unit



Photo 17: conducted unit

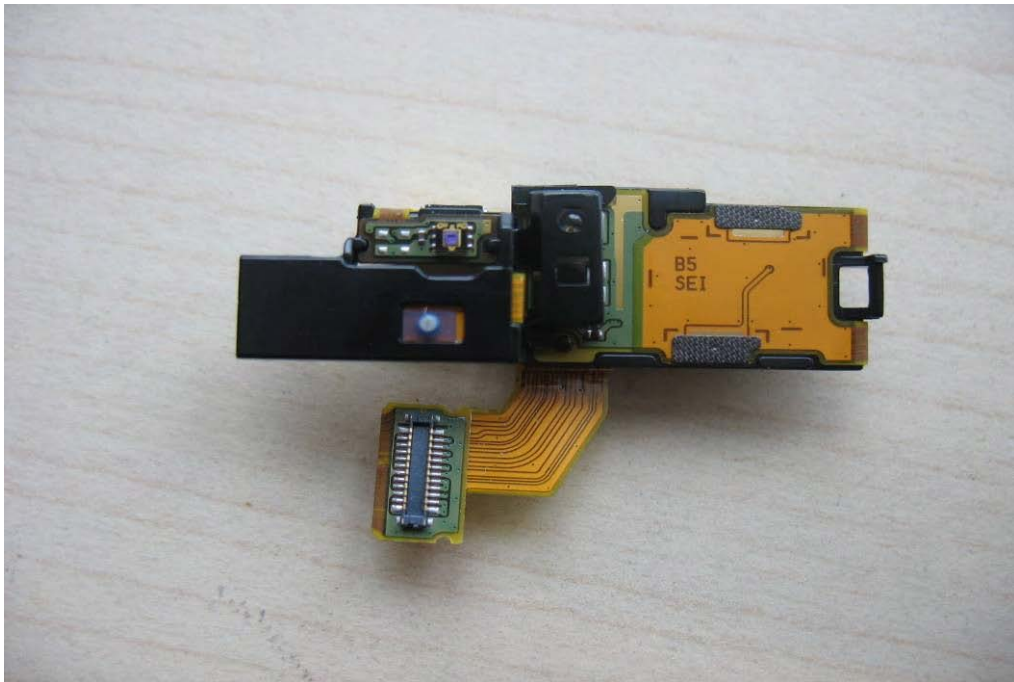


Photo 18: conducted unit



Photo 19: conducted unit

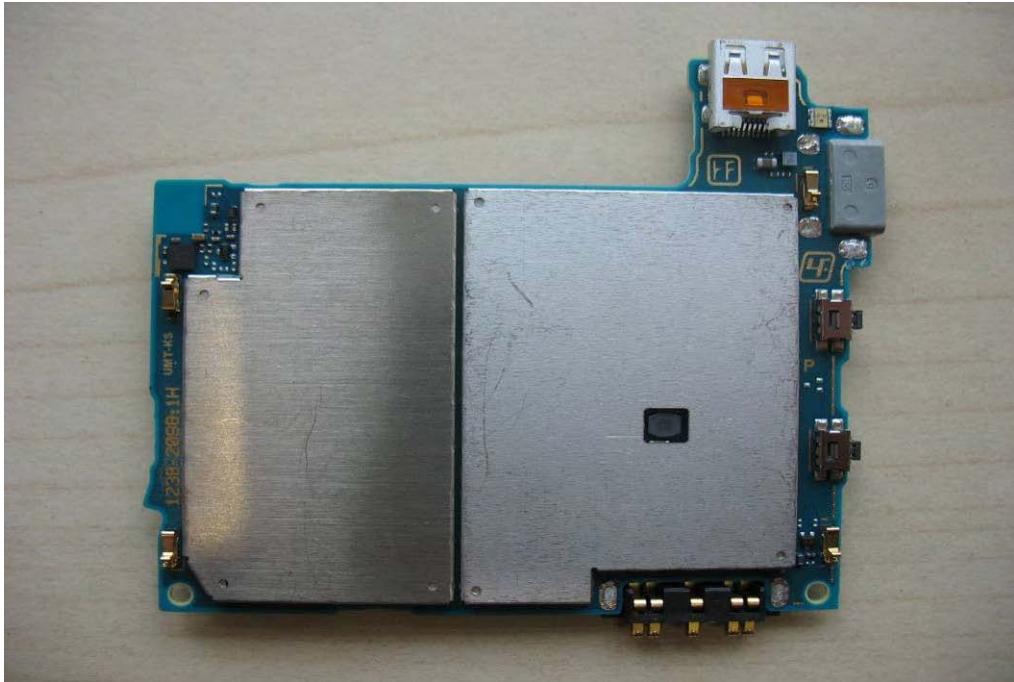


Photo 20: conducted unit

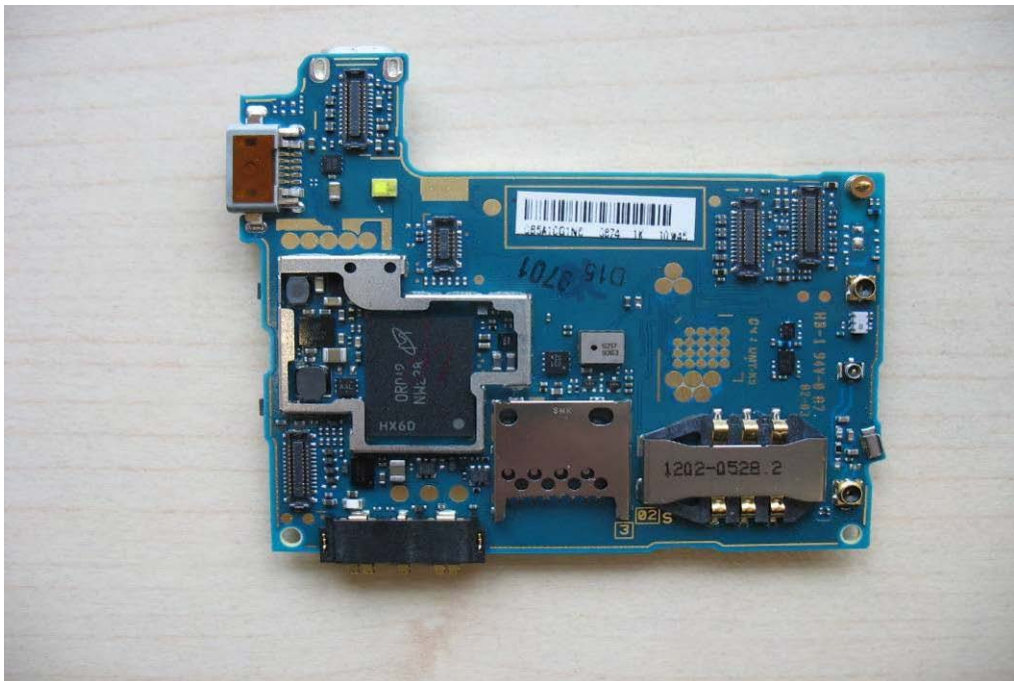


Photo 21: conducted unit

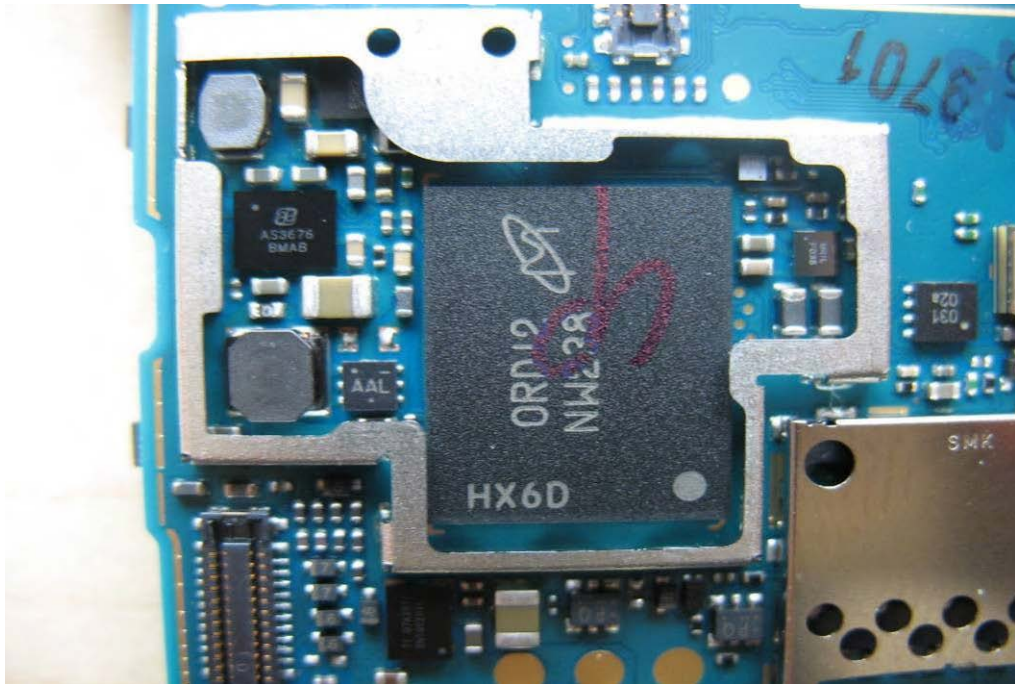


Photo 22: conducted unit

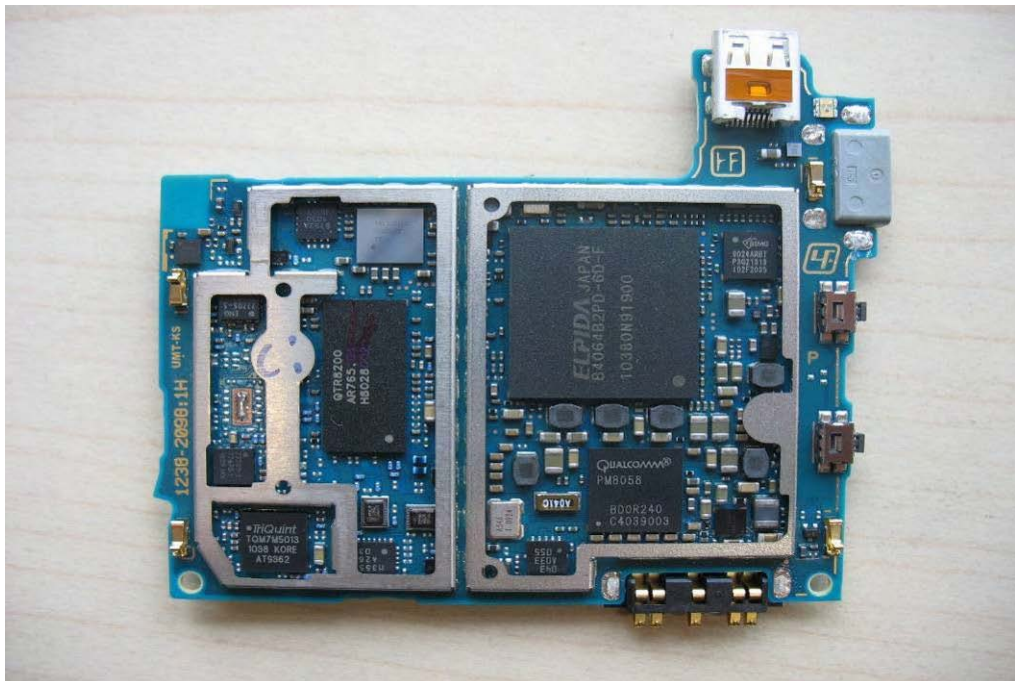


Photo 23: conducted unit



Photo 24: conducted unit

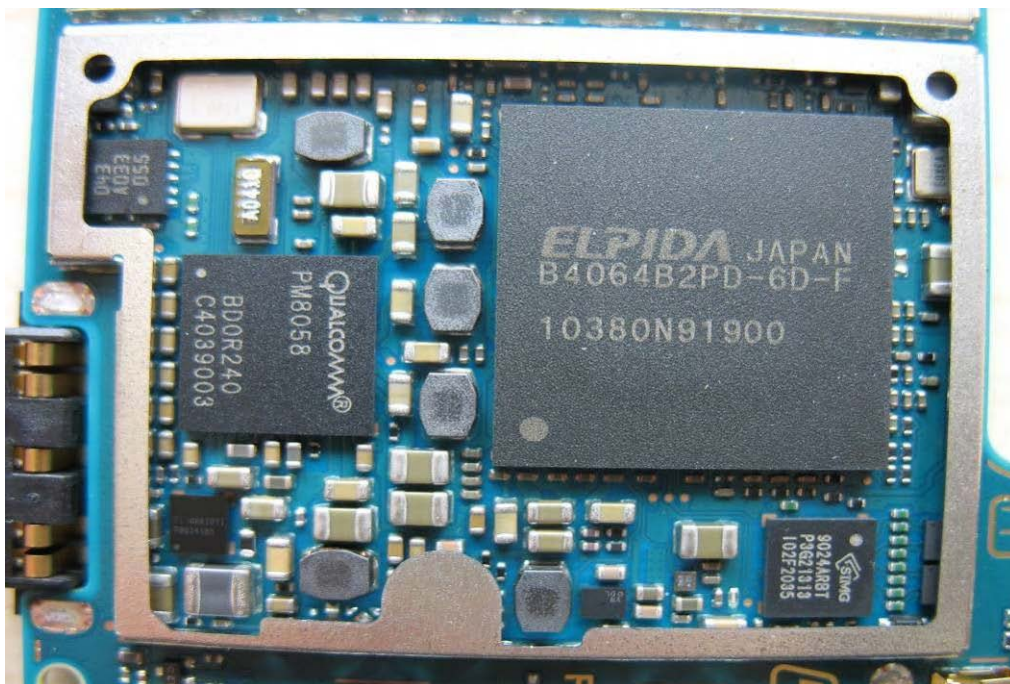


Photo 25: conducted unit



Photo 26: conducted unit

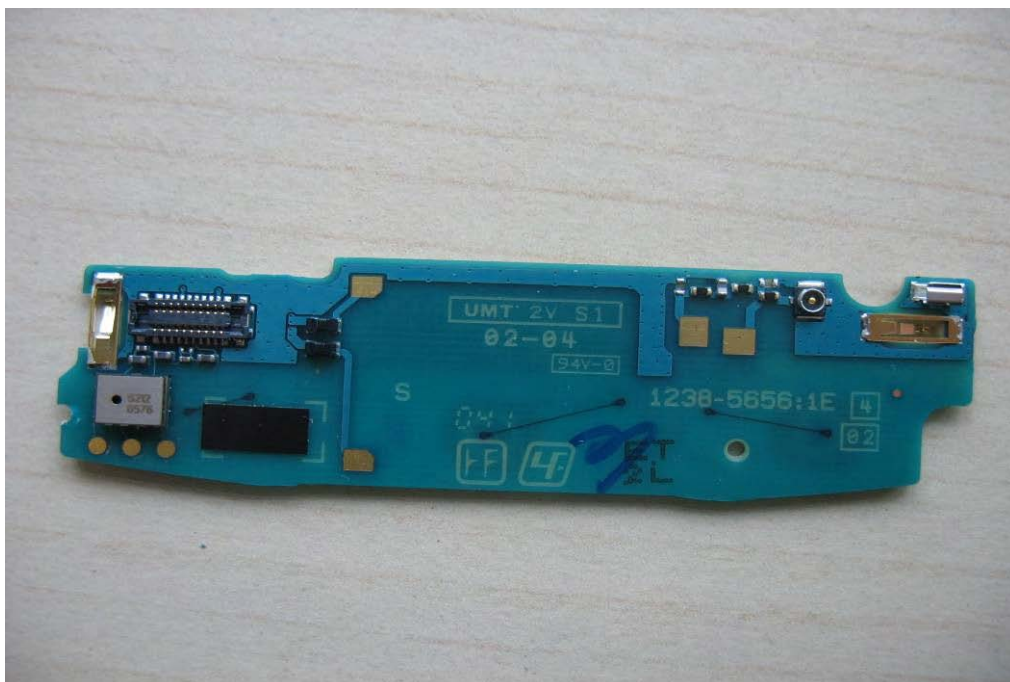


Photo 27: conducted unit



Annex D Document history

Version	Applied changes	Date of release
1.0	Initial release	2011-01-28

Annex E Further information**Glossary**

DUT	-	Device under Test
EMC	-	Electromagnetic Compatibility
EUT	-	Equipment under Test
FCC	-	Federal Communication Commission
FCC ID	-	Company Identifier at FCC
HW	-	Hardware
IC	-	Industry Canada
Inv. No.	-	Inventory number
N/A	-	not applicable
S/N	-	Serial Number
SW	-	Software