

Prepared (also subject responsible if other)

No.

LD/SEMC/CCDALE *Ramadan Plicanic*

CCDA09:439

Approved

Checked

Date

Rev

Reference

LD/SEMC/CCDA *Mats Hansson*

090728

090727

A

File

10 Appendix

10.1 Photographs of the device under test



Battery and cover removed



Front side



Rear side

Company Internal
REPORT

Prepared (also subject responsible if other)

No.

LD/SEMC/CCDALE *Ramadan Plicanic*

CCDA09:439

Approved

Checked

Date

Rev

Reference

LD/SEMC/CCDA *Mats Hansson*

090728

090727

A

File



System connector

Prepared (also subject responsible if other)

No.

LD/SEMC/CCDALE *Ramadan Plicanic*

CCDA09:439

Approved

Checked

Date

Rev

Reference

LD/SEMC/CCDA *Mats Hansson*

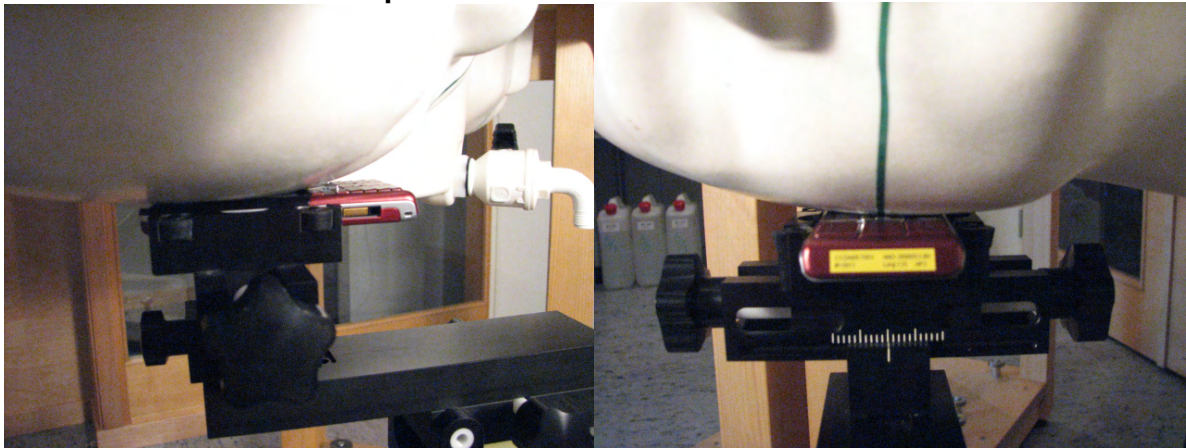
090728

090727

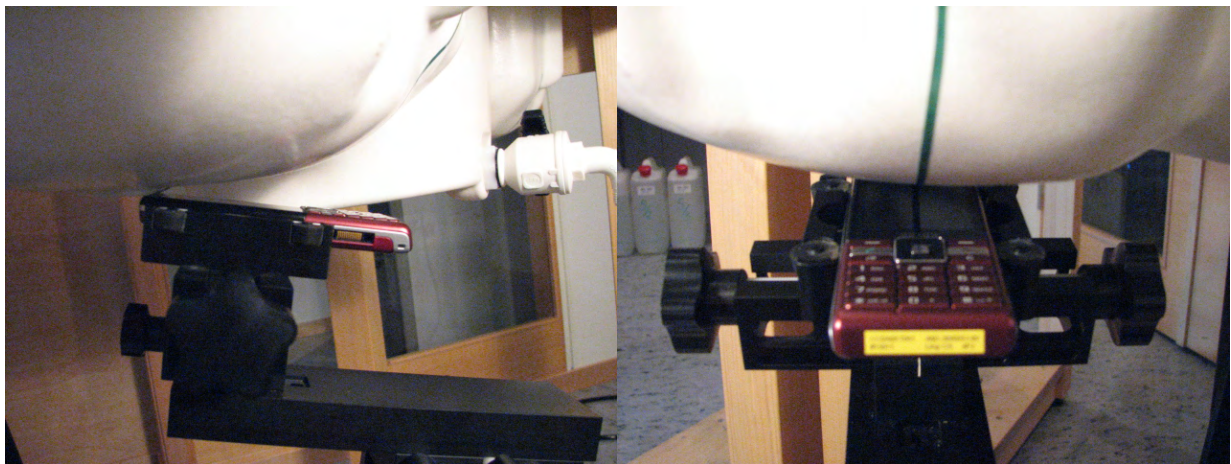
A

File

10.2 Device position at SAM Twin Phantom



DUT position towards the head: Cheek (touch) position



DUT position towards the head: Tilt (touch + 15°) position

Company Internal
REPORT

Prepared (also subject responsible if other)

No.

LD/SEMC/CCDALE *Ramadan Plicanic*

CCDA09:439

Approved

Checked

Date

Rev

Reference

LD/SEMC/CCDA *Mats Hansson*

090728

090727

A

File



DUT in body position with 15 mm distance