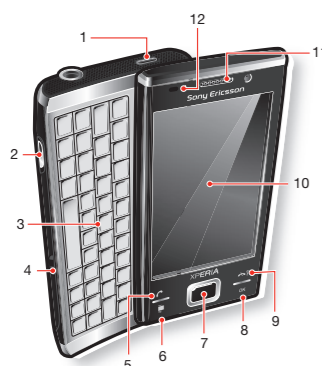


# User guide

## Xperia™ X2

### Phone overview



- 1 Power key
- 2 Connector for charger/USB cable
- 3 Keyboard
- 4 Battery cover lock
- 5 Call key
- 6 SlideView key
- 7 Optical joystick/Selection key

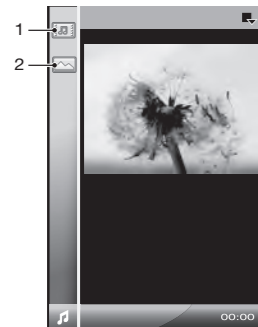
- 8 OK key
- 9 End call key
- 10 Touch screen
- 11 Ear speaker
- 12 Light sensor



- 13 3.5 mm headset/TV-out cable connector
- 14 Stylus
- 15 Camera light
- 16 Camera lens
- 17 Volume key
- 18 Loudspeaker
- 19 Camera key
- 20 Strap holder

- Call history
- Calendar
- Media
- Panel Manager

To navigate SlideView



- 1 To select or open an item in the list, tap the item.
- 2 To go back to the previous view, tap the downmost icon in the bar on the left hand side (item number 2 in the image).
- 3 To go back to the Media view, tap the [M] in the bar on the left hand side (item number 1 in the image).

To open SlideView

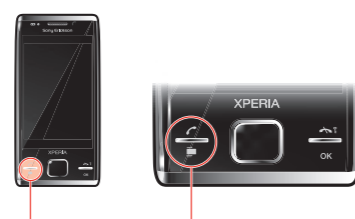
- Press [M]

### Panels

The Panels interface lets you personalize your standby screen. You can view your chosen panels in different views, set panels to switch automatically, and download new panels.

Some panels described in this User guide are not supported by all networks and/or service providers in all areas.

To open and close panel views



- 1 Press [M].
  - 2 Tap Panels.
- You can double press [M] to enter the panel view directly.

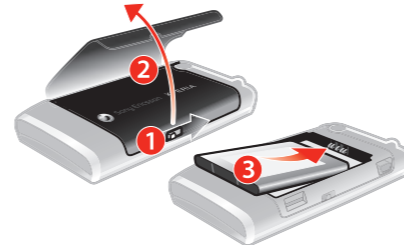
### Getting started

To insert the SIM card



- 1 Remove the battery cover.
- 2 Slide the SIM card into its holder with the gold-colored contacts facing down.

To insert the battery



- Insert the battery with the Sony Ericsson hologram side up and the connectors facing each other.

To insert a memory card



- 1 Remove the battery cover.
- 2 Insert the memory card with the gold-colored contacts facing down.

To turn on the phone



- 1 Press and hold down the power key until the phone starts.
- 2 At first startup, a Quick Start wizard guides you through the initial settings.

### Aligning the screen

The first time you turn on the phone, you need to align the screen. You can also re-align your screen, if necessary.

You need to use the stylus to align the screen.

- To align the screen
- 1 Tap [Settings] > System > Screen > Align Screen.
  - 2 Use the stylus and tap each target firmly and accurately.

To turn on sleep mode

- To turn off the screen temporarily and switch the phone to sleep mode, press the power key.

To turn off sleep mode

- To activate the screen, briefly press the power key. The phone is also activated when you slide open the phone, or when you receive a call or a message.

### Screen lock

To lock the screen

- Press and hold [Power].

To unlock the screen

- Slide [Power] to the left or right on the screen.

### Charging the battery

The phone battery is partly charged when you buy it.



To charge the phone using the power adapter

- Connect the phone to a power outlet using the USB cable provided and the power adapter.

To charge the phone using a computer

- Connect the phone to a USB port on a computer using the included USB cable provided.

### Phone overview

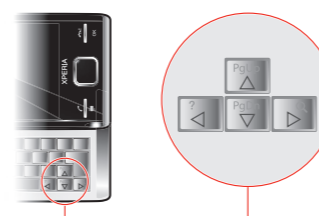
### Using the touch screen



- To highlight or open an item, tap the item.
- To copy, rename or send a file, tap and hold down the file or folder. Select the preferred action from the options dialog.
- To scroll, tap the screen and slide up or down. On some pages you can also slide to the side.
- To stop the screen from scrolling, tap the screen.
- To pan a page, touch and hold on the screen, then drag your finger.
- To pan continuously, drag your finger towards the outer limits of a page and hold. Release your finger to stop panning.

### Using the arrow keys

To use the arrow keys



- Press the arrow keys left, right, up or down to move around the screen. Press [Enter] to select an item.

### Using the optical joystick

You can move the highlighted marker in any direction by letting your finger glide over the navigation key. In Microsoft® Internet Explorer®, Messaging and Contacts, you can use the optical joystick to scroll instead.



- To enable key press simulation
- 1 Tap [Settings] > System > Optical joystick.
  - 2 Mark or unmark the Enable key press simulation check box.

- To enable mouse simulation
- 1 Tap [Settings] > System > Optical joystick.
  - 2 Mark or unmark the Enable mouse simulation check box.

### Entering text

To enter text and characters, you can use:

- The slideout keyboard.
- The on-screen keyboard.
- Handwriting recognition features such as Block Recognizer, Letter Recognizer or Transcriber.

### Using the slideout keyboard

- To type lower-case letters, press the relevant letter keys.

- To type a single upper-case letter, press [Shift] and then press the relevant letter key.
- To use all upper-case letters, press [Shift] twice. To change back to all lower-case letters, press [Shift] twice again.
- To type accented characters, press the letter key first, and then press [Shift] until the required character appears.
- To enter a number or a symbol (in blue or red on the upper right corner of some keys), press [Shift] and then press the relevant key.
- To use all number or symbol keys, press [Shift] twice and enter the relevant numbers or symbols.
- To verify entries or exit the program in use, press [Esc].

### Using the on-screen keyboard

You can use the on-screen keyboard to enter text. The on-screen keyboard uses a built-in dictionary.

### To enter text using the on-screen keyboard

- 1 In a program, tap the text input icon [Text] at the bottom of the screen.
- 2 Tap [Enter], then tap Keyboard.
- 3 To enter text, tap the letters on the on-screen keyboard.
- 4 To select a suggestion, press the space key.

### SlideView

SlideView provides you with quick access to frequently used phone activities. It also gives you an overview of missed incoming activity, notifying you of any missed calls, emails, and text messages. SlideView includes access to:

- Messaging

### Switching between panels and applications

- In a panel or an application, double press [Home] to go to Favorites view.
- From a panel view, press [Home] to return to the most recently used panel.
- In an application you started from the Start menu, press [Home] to return to the most recently used panel.

### Panel manager

With the panel manager you can display the panels in different views, edit settings for the auto panel switching and download new panels.

- [Home] Favorites view
- [List] List view
- [Filter] Auto Panel switching
- [Settings] Settings

### Favorites view

Your nine favorite panels are displayed in this view. You can set panels as favorites from the List view.

### To open a panel from the Favorites view

- Tap the panel you want to open.

### List view

Here you can set panels as favorites and read information about some of them. You can also filter the list of displayed panels.

### To open a panel from List view

- 1 Drag the list such that the desired panel is highlighted.
- 2 Tap Activate.

### To add a panel to your Favorites

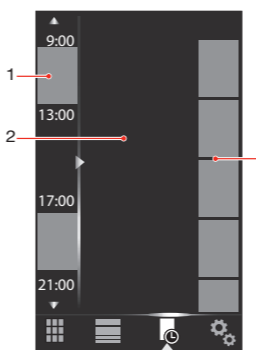
- 1 From the List view, select a panel.
- 2 Tap Favorite.

### To filter panels

- 1 From the List view, tap [Filter].
- 2 Select a filter.

### Auto panel switching

Auto panel switching changes the current panel automatically at a selected time.



- 1 Timeline
- 2 Added panels in timeline
- 3 Available panel list

### To change the time in the timeline

- In Auto panel switching view, tap [Time] or [Panel].

### To add panels to the timeline

- Drag the panels you want from the available panel list to the timeline.

### To remove panels from the timeline

- Drag the panels you want to remove from the timeline to the available panel list.

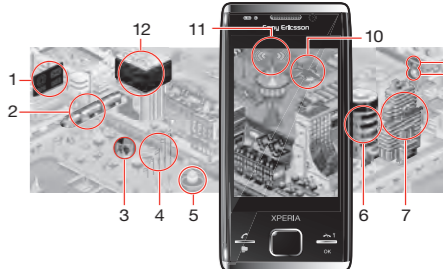
### Panel manager settings



- 1 Auto panel switching on/off - Turn Auto panel switching on or off.
- 2 Release information/Update - Download the latest version of the Panel manager application. If the current Panel manager application is the latest version the Update is disabled.
- 3 Get more panels - Download new panels for your device.

### Pixel City panel

You can access a number of features through the Pixel City panel. Many details and visual behaviours are connected to different features. You can discover the whole city by flicking to the sides.



- 1 Messages and e-mails.
- 2 Calendar appointments. When there is a calendar appointment coming up in the day, the train will appear.
- 3 Silent mode. The musicians play music at the bandstand in the park when the phone is not in silent mode. The musicians disappear under the bandstand when silent mode is on.
- 4 Signal level. The number of flags indicates the signal level.

- The Bluetooth function. The fountain will flow with water when the Bluetooth function is on. When the Bluetooth function is off, the fountain is still.
- Battery level. The number of filled car park levels indicates battery level status.
- Sony Ericsson website.
- Google Maps.
- Google website.
- Calls. A red airplane will fly in and stop on the runway after you miss a phone call.
- Wi-Fi On/Off. The air control tower will emit signal waves when Wi-Fi is on.
- Time and date.

## Downloading new panels

### To download new panels

- From the Panel settings view, tap **Get more panels**.

## Calling

### Making and receiving calls

You can use your phone to make, receive and keep track of calls and messages. You can also dial directly from Contacts or from the Call History. To make or receive a phone call, your phone must be within range of a network.

### Making calls

#### To make a call using the keypad

- Press **[\*]**.
- If the keypad is not visible, tap **[⌨]**.
- Enter the phone number, starting with the area code, by tapping the number keys.
- Tap **[#]**.

#### To end a call

- To end an ongoing call, press **[\*]**.

#### To make international calls

- Press **[\*]**.
- Tap and hold down **[0+]** until the international call prefix **+**  appears.
- Enter the country/region code, area code (without the initial zero) and phone number.
- Tap **[#]**.

#### To make a call from Contacts

- Press **[\*]**.
- Tap **[C]**.
- Hide the keypad if necessary.
- Scroll to the contact you want to call.
- Tap the contact to see all of the contact's phone numbers.
- Tap the number you want to call.

### Receiving calls

#### To answer a call

- Press **[\*]**.

### Emergency calls

Your phone supports international emergency numbers, for example, 112 or 911. You can normally use these numbers to make emergency calls in any country, with or without the SIM card inserted, if you are within range of a network.

- In some countries, other emergency numbers may also be promoted. Your network operator may therefore have saved additional local emergency numbers on the SIM card.

#### To make an emergency call

- Press **[\*]**.
- To display the Phone keypad, if not already displayed, tap **[⌨]**.
- Dial the local emergency number, or look it up on the SIM card, if available.
- Tap **[#]**.

### Network settings

You can set how your phone should choose an available network when you are outside your operator coverage area.

#### To enter network settings

- Press **[\*]** and tap **Menu > Options**.
- Tap the **Network** tab and enter the settings.

## E-mail

You can get e-mail in your phone and use all standard e-mail functions.

- You can synchronise your e-mail using the Microsoft® Exchange ActiveSync® application.

### Before using e-mail

Before you can send and receive e-mail, you need to set up at least one e-mail account in your phone. You can set up the following types of e-mail accounts:

- Outlook e-mail that you can synchronize with a PC or your company Microsoft® Exchange Server
- E-mail account provided by an ISP (Internet Service provider)
- Web-based e-mail accounts
- Work account that you access using a VPN (Virtual Private Network) connection

Before using e-mail, you need to have the correct Internet settings in the phone. See *Connecting to the Internet* on page 35.

#### To set up Microsoft® Outlook® e-mail through a Microsoft® Exchange Server

- Tap **[\*]** > **E-mail** > **Setup E-mail**.
- Enter your e-mail address and password, select the **Save password** option, then tap **Next**.
- Select **Try to get the e-mail settings automatically from the Internet**, then tap **Next**.
- If automatic settings can not be found, select **Exchange server in the Your e-mail provider list**, then tap **Next**.
- Tap **Next** again.
- Mark the **Attempt to detect Exchange Server Settings automatically** check box, then tap **Next**.
- If server settings are not detected, enter them manually, then tap **Next**.
- Enter your user name, password and domain, then tap **Next**.

- If prompted, enter the server address, then tap **Next**.
- Select the data you want to synchronize, then tap **Finish**.

Some e-mail features depend on the Microsoft® Exchange Server version used in your company. Check with your network administrator for the availability of these features.

#### To manually set up an e-mail account of a common type

- Tap **[\*]** > **E-mail** > **Setup E-mail**.
- Enter your e-mail address and password. Select the **Save password** option, then tap **Next**.
- Check the **Try to get the e-mail settings automatically from the Internet** box, then tap **Next**.
- If automatic settings can not be found, select an option in the **Your e-mail provider**: list, then tap **Next**.
- Enter your name and account display name, then tap **Next**.
- If prompted, enter the incoming mail server address and the account type, then tap **Next**.
- Enter your user name and password for the e-mail account, check the **Save password** box, then tap **Next**.
- Tap **Advanced Server Settings**, select a **Network connection**, and tap **Done** to confirm.
- Enter the outgoing mail server address, then tap **Next**.
- Select a time interval for **Automatic Send/Receive**.
- Tap **Finish**.

### Handling e-mail messages

#### To check for new e-mail

- Tap **[\*]** > **E-mail**.
- Tap your e-mail account.

function on. There is thus no need to enter the passcode again.

#### To accept a Bluetooth™ partnership

- Check that Bluetooth™ functionality is turned on and your phone is in visible mode.
- Tap **Yes** when prompted to establish a partnership with the other device.
- Enter the same passcode that was entered on the device requesting the partnership, then tap **Next**.
- When you are notified that the partnership has been established, tap **Done**. You can now exchange information with the paired device in a secure manner.

## Update Service

You can update the software of your phone in order to improve performance. This is done using the Sony Ericsson Update Service.

#### To use Update Service

- From a PC with an Internet connection, go to [www.sonyericsson.com/update](http://www.sonyericsson.com/update).
- Follow the instructions to install the latest available software in your phone.

## Resetting the phone

You can reset your phone to factory default settings. You can also use **Clear phone memory** to simultaneously reset

- Tap **Menu > Send/Receive**.

### Direct push

Direct push technology lets you receive new e-mail messages in your phone as soon as they arrive in your Inbox on the Microsoft® Exchange Server. This feature also works for items such as contacts, calendar appointments and tasks.

#### To turn on and off MS Direct push

- Tap **[\*]** > **Settings > Communication Manager**.
- Select an option for **MS Direct Push**.

Frequent updates can be costly and are operator-dependent.

## SMS

You can send short text messages up to 160 characters long to other mobile phones using SMS (Short Message Service).

Before you use SMS, you must have a service center number. The number is supplied by your service provider and is usually saved on the SIM card the first time you start your device with the SIM inserted. If not, you should contact your service provider.

#### To create and send a text message

- Tap **[\*]** > **Text**.
- Tap **Menu > New > Text message**.
- Enter the phone number manually or tap **To:** to add a phone number from **Contacts**.
- Tap the text area and enter the text.
- Tap **Send**.

### To view a message

- When you receive a new text or multimedia message, **[M]** appears on the screen.
- Tap **[\*]** > **Text**.
- Tap a conversation list.
- In the conversation list, tap the message.

## MMS

In a message sent using MMS (Multimedia Messaging Service), you can include pictures, video, and audio clips.

Please note that MMS is a charged service and has to be provisioned on your mobile account. Contact your service provider for details. Please make sure the size of multimedia messages that you send is within the limits allowed by your service provider.

#### To install MMS settings automatically

- Tap **[\*]** > **Settings > Connections > Connection Setup**.
- Tap **OK**.

#### To view a message

- When you receive a new text or multimedia message, **[M]** appears on the screen.
- Tap **[\*]** > **Text**.
- Tap a conversation list.
- In the conversation list, tap the message.

#### To create and send a multimedia message

- Tap **[\*]** > **Text**.
- Tap **Menu > New > Multimedia Message**.
- Tap a template or tap **[+]** to open a blank picture message.

- Enter the phone number manually after **To:** or tap **To:** to add a number from **Contacts**.
- Enter a subject.
- Tap the image area to insert a photo or a video clip.
- Tap **Insert Text** to enter text.
- Tap **Insert Audio** to insert audio.
- Tap **Send**.

## Synchronizing

By regularly synchronizing your data you can always keep the information in your phone up-to-date, wherever you are. You can synchronize several types of information between your phone and a computer:

- Microsoft® Outlook® information – e-mail messages, contacts, calendar items, tasks and notes
- Media** – photos, videos and music
- Favorites** – Web page bookmarks under **Mobile Favorites**
- Files – Microsoft® Office documents, pdf files, and more

### Synchronization methods

After you have installed the synchronization software, you can synchronize your phone with your computer using one of these methods:

- USB connection – When you connect a USB cable between your phone and a computer, the synchronization starts automatically.
- Bluetooth connection – You must first set up a Bluetooth partnership between your phone and the computer

before you can start the synchronization. For more information, see *Bluetooth™ partnership* on page 32.

- Wireless connection – Synchronize with an Exchange Server using Exchange ActiveSync® or Windows Mobile Device Center.

You are recommended to synchronize frequently in order to keep the information in your phone and computer up-to-date.

### Setting up synchronization

- If your computer uses Windows XP® or other compatible Windows operating system, you should use Microsoft® Exchange ActiveSync® 4.5 or later.
- If your computer uses Windows Vista®, you should use Windows® Mobile Device Center, which is part of the operating system.

#### To install Exchange ActiveSync®

- Go to [www.sonyericsson.com/X2Support](http://www.sonyericsson.com/X2Support) to download the latest version of the Exchange ActiveSync® application to your computer.
- Follow the on-screen instructions to install the software.

#### To set up synchronization in Windows XP

- Install Microsoft Exchange ActiveSync® on the computer. For more information, see *To install Exchange ActiveSync®* on page 30.
- Connect the phone to the computer using the USB cable that comes with the phone. The *Synchronization Setup Wizard* automatically starts and guides you through the creation of a synchronization partnership.
- Computer:** Click **Next**.

- To synchronize your phone with the computer, mark the **Synchronize directly with a server running Microsoft Exchange** check box and click **Next**.
- Select the information types that you want to synchronize, then click **Next**.
- Click **Finish**.

#### To set up synchronization in Windows Vista

- Connect your phone to the computer using the USB cable.
- Computer:** The Windows® Mobile Device Center automatically starts. Click **Set up your device**.
- Select the information types that you want to synchronize.
- Type a name for your phone, and click **Set Up**.

### Starting synchronization

- To start synchronization from Exchange ActiveSync® on a computer
  - Connect your phone to the computer using the USB cable. Exchange ActiveSync® opens automatically and the synchronization starts.

#### To start synchronization from Exchange ActiveSync® in the phone

- Connect your phone to the computer using the USB cable.
- Phone:** Tap **[\*]** > **ActiveSync**.
- Tap **Sync**.

#### To start synchronization from Windows® Mobile Device Center on a computer

- Connect your phone to the computer using the USB cable.

Please note: Some of the services in this User guide are not supported by all networks. This also applies to the GSM International Emergency Number 112. Please contact your network operator or service provider if you are in doubt whether you can use a particular service or not. Bluetooth and the Bluetooth logo are trademarks or registered trademarks of Bluetooth SIG Inc. and any use of such mark by Sony Ericsson is under license.

Wi-Fi is a trademark or a registered trademark of the Wi-Fi Alliance. The Liquid Identity logo and X2 are trademarks or registered trademarks of Sony Ericsson Mobile Communications AB. Sony and "make.believe" is a trademark or registered trademark of Sony Corporation. Media Go is a trademark or a registered trademark of Sony Media Software and Services.

Ericsson is a trademark or registered trademark of Telefonaktiebolaget LM Ericsson. Microsoft, Windows, the Windows logo, Outlook, Windows Vista and ActiveSync are registered trademarks or trademarks of Microsoft Corporation in the United States and/or other countries. This product is protected by certain intellectual property rights of Microsoft. Use or distribution of such technology outside of this product is prohibited without a license from Microsoft. DLNA is a trademark or registered trademark of the Digital Living Network Alliance. PLAYSTATION is a trademark or registered trademark of Sony Computer Entertainment, Inc.

Other product and company names mentioned herein may be the trademarks of their respective owners. All rights not expressly granted herein are reserved. All illustrations are for illustration only and may not accurately depict the actual phone. This User guide contains simulated screen images.

### To take a photo

- Activate the camera and tap **[C]**.
- Press **[C]** halfway down to use auto focus.
- When the focus frame is green, press fully down to take the photo.

### To exit the camera

- Tap **[X]**.

The camera closes automatically if you do not use it for two minutes.

## Legal information

### Sony Ericsson X2/X2i/X2a

This User guide is published by Sony Ericsson Mobile Communications AB or its local affiliated company, without any warranty. Improvements and changes to this User guide necessitated by typographical errors, inaccuracies of current information, or improvements to programs and/or equipment, may be made by Sony Ericsson Mobile Communications AB at any time and without notice. Such changes will, however, be incorporated into new editions of this User guide.

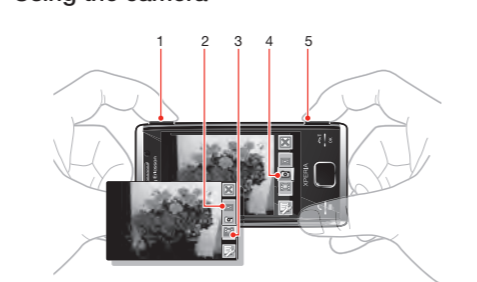
All rights reserved. ©Sony Ericsson Mobile Communications AB, 2009 Publication number: XXXX-XXXX

Your mobile phone has the capability to download, store and forward additional content, e.g. ringtones. The use of such content may be restricted or prohibited by rights of third parties, including but not limited to restriction under applicable copyright laws. You, and not Sony Ericsson, are entirely responsible for additional content that you download to or forward from your mobile phone. Prior to your use of any additional content, please verify that your intended use is properly licensed or is otherwise authorized. Sony Ericsson does not guarantee the accuracy, integrity or quality of any additional content or any other third party content. Under no circumstances will Sony Ericsson be liable in any way for your improper use of additional content or other third party content.

## Camera

You can take photos and record videos using the camera in the phone. You will find saved photos and videos by pressing **[M]** under **Media > Pictures and Videos**.

### Using the camera



- Zoom in or out
- View photos and videos
- Select video camera
- Select still camera
- Activate the camera/Take photos/Record videos **[C]**

### To activate the camera

- Press and hold down **[C]**.

### To connect to a wireless network

- Tap **[\*]** > **Settings > Connections > Wi-Fi**.
- Tap the network you want to connect to.
- A number of screens will follow. On each screen, check the information displayed and change if necessary, then tap **Next**.
- On the last screen, tap **Finish**.

### To turn on or off Wi-Fi

- Tap **[\*]** > **Settings > Communication Manager**.
- Mark or unmark the **Wi-Fi** check box to turn the function on or off, respectively.

Using Wi-Fi consumes battery power. Turn off Wi-Fi when not in use.

## TV out

You can view pictures, videos and Office Mobile applications stored in your phone on a TV, LCD monitor or a video projector. Your phone connects to the TV, LCD monitor or video projector through a dedicated TV out cable.

DRM protected movies stored on your phone can not be viewed on a TV or LCD monitor.

#### To view photos and videos on a TV

- Connect the TV out cable to the phone and the TV.
- Tap **[\*]** > **Settings > Connections > Communication manager**.
- Tap the DLNA Media Server check box.
- Tap the file you want to show on the TV.

www.sonyericsson.com



**Sony Ericsson**

Sony Ericsson Mobile Communications AB SE-221 88 Lund, Sweden

XXXXX

**Sony Ericsson**

FCC Statement  
Declaration of Conformity

**Sony Ericsson X2A**

UMTS HSPA Band 1 2 5 GSM GPRS/EDGE 850/900/1800/1900

## Important Information

### United States & Canada

THIS PHONE MODEL HAS BEEN CERTIFIED IN COMPLIANCE WITH THE GOVERNMENT'S REQUIREMENTS FOR EXPOSURE TO RADIO WAVES.

The X2A Series mobile phones have been designed to comply with applicable safety requirements for exposure to radio waves. Your wireless phone is a radio transmitter and receiver. It is designed to not exceed the limits\* of exposure to radio frequency (RF) energy set by governmental authorities. These limits establish permitted levels of RF energy for the general population. The guidelines are based on standards that were developed by international scientific organizations through periodic and thorough evaluation of scientific studies. The standards include a safety margin designed to assure the safety of all individuals, regardless of age and health.

The radio wave exposure guidelines employ a unit of measurement known as the Specific Absorption Rate (SAR). Tests for SAR are conducted using standardized methods with the phone transmitting at its highest certified power level in all used frequency bands. While there may be differences between the SAR levels of various phone models, they are all designed to meet the relevant guidelines for exposure to radio waves. For more information on SAR, please refer to the safe and efficient use chapter in the User Guide.

The highest SAR value as reported to the authorities for this phone model when tested for use by the ear is 1.03 W/kg\*, and when worn on the body is 1.06 W/kg\* for speech and 1.02 W/kg\* for data calls. Body worn measurements are made while the phone is in use and worn on the body with a Sony Ericsson accessory supplied with or designated for use with this phone. It is therefore recommended that only Ericsson and Sony Ericsson original accessories be used in conjunction with Sony Ericsson phones.

\*\*Before a phone model is available for sale to the public in the US, it must be tested and certified by the Federal Communications Commission (FCC) that it does not exceed the limit established by

the government-adopted requirement for safe exposure\*. The tests are performed in positions and locations (i.e., by the ear and worn on the body) as required by the FCC for each model. The FCC has granted an Equipment Authorization for this phone model with all reported SAR levels evaluated as in compliance with the FCC RF exposure guidelines. While there may be differences between the SAR levels of various phones, all mobile phones granted an FCC equipment authorization meet the government requirement for safe exposure. SAR information on this phone model is on file at the FCC and can be found under the Display Grant section of <http://www.fcc.gov/oet/fccid> after searching on FCC ID PY7A3880044. Additional information on SAR can be found on the Cellular Telecommunications & Internet Association (CTIA) website at <http://www.phonefacts.net>.

*\* In the United States and Canada, the SAR limit for mobile phones used by the public is 1.6 watts/kilogram (W/kg) averaged over one gram of tissue. The standard incorporates a margin of safety to give additional protection for the public and to account for any variations in measurements.*

*\*\*This paragraph is only applicable to authorities and customers in the United States.*

## Important Information

### Latin & South America

#### **Radio wave exposure and Specific Absorption Rate (SAR) information**

The X2A Series mobile phones have been designed to comply with applicable safety requirements for exposure to radio waves. These requirements are based on scientific guidelines that include safety margins designed to assure the safety of all persons, regardless of age and health.

The radio wave exposure guidelines employ a unit of measurement known as the Specific Absorption Rate, or SAR. Tests for SAR are conducted using standardised methods with the phone transmitting at its highest certified power level in all used frequency bands.

While there may be differences between the SAR levels of various phone models, they are all designed to meet the relevant guidelines for exposure to radio waves.

For more information on SAR, please refer to the safety chapter in the User Guide.

SAR data information for residents in countries that have adopted the SAR limit recommended by the International Commission on Non-Ionizing Radiation Protection (ICNIRP), which is 2 W/kg averaged over ten (10) gram of tissue (for example European Union, Japan, Brazil and New Zealand):

The highest SAR value for this model phone when tested by Sony Ericsson for use at the ear is 1.02 W/kg (10g).

## FCC Statement

This device complies with Part 15 of the FCC rules.

Operation is subject to the following two conditions: (1)

This device may not cause harmful interference, and (2)

This device must accept any interference received, including interference that may cause undesired operation.



Any change or modification not expressly approved by Sony Ericsson may void the user's authority to operate the equipment.

This equipment has been tested and found to comply with the limits for a Class B digital device, pursuant to Part 15 of the FCC Rules. These limits are designed to provide reasonable protection against harmful interference in a residential installation. This equipment generates, uses and can radiate radio frequency energy and, if not installed and used in accordance with the instructions, may cause harmful interference to radio communications. However, there is no guarantee that interference will not occur in a particular installation.

If this equipment does cause harmful interference to radio or television reception, which can be determined by turning the equipment off and on, the user is encouraged to try to correct the interference by one or more of the following measures:

- Reorient or relocate the receiving antenna.
- Increase the separation between the equipment and receiver.
- Connect the equipment into an outlet on a circuit different from that to which the receiver is connected.
- Consult the dealer or an experienced radio/TV technician for help.

## Industry Canada Statement

This device complies with RSS-210 of Industry Canada.

Operation is subject to the following two conditions: (1) this device may not cause interference, and (2) this device must accept any interference, including interference that may cause undesired operation of the device.

This Class B digital apparatus complies with Canadian ICES-003.

Cet appareil numérique de la classe B est conforme à la norme NMB-003 du Canada.



## Declaration of Conformity for X2A

We, **Sony Ericsson Mobile Communications AB** of  
Nya Vattentornet  
SE-221 88 Lund, Sweden

declare under our sole responsibility that our product

**Sony Ericsson type AAD-3880044-BV**

and in combination with our accessories, to which this declaration relates is in conformity with the appropriate standards EN 301 511:V9.0.2, EN 301 908-1:V3.2.1, EN 301 908-2:V3.2.1, EN 300 440-1:V1.4.1, EN 300 440-2:V1.2.1, EN 300 328:V1.7.1, EN 301 489-7:V1.3.1, EN 301 489-17:V2.1.1, EN 301 489-24:V1.4.1, EN 301 489-3:V1.4.1 and EN 60 950-1:2006 following the provisions of, Radio Equipment and Telecommunication Terminal Equipment directive **1999/5/EC**.

Lund, January 2010

**CE 0682** 



---

Rikko Sakaguchi,  
*Executive Vice President and Chief Creation Officer*  
We fulfil the requirements of the R&TTE Directive (1999/5/EC).

[www.sonyericsson.com](http://www.sonyericsson.com)



**Sony Ericsson**

Sony Ericsson Mobile Communications AB  
SE-221 88 Lund, Sweden

Sony Ericsson

Important information

## Sony Ericsson Consumer Web site

At [www.sonyericsson.com/support](http://www.sonyericsson.com/support) there is a support section where help and tips are only a few clicks away. Here you will find the latest computer software updates and tips on how to use your product more efficiently.

## Service and support

You have access to a portfolio of exclusive service advantages such as:

- Global and local Web sites providing support.
- A global network of Contact Centers.
- An extensive network of Sony Ericsson service partners.
- A warranty period. Learn more about the warranty conditions in the *Limited warranty* section.

At [www.sonyericsson.com/support](http://www.sonyericsson.com/support), you can find the latest support tools and information. For operator-specific services and features, please contact your network operator.

You can also contact our Contact Centers. If your country/region is not represented in the list below, please contact your local dealer. (Calls are charged according to national rates, including local taxes, unless the phone number is a toll-free number.)

If your product needs service, please contact the dealer from whom it was purchased, or one of our service partners. For warranty claims, save proof of purchase.

## Guidelines for Safe and Efficient Use

Please follow these guidelines. Failure to do so might entail a potential health risk or product malfunction. In if doubt as to its proper function, have the product checked by a certified service partner before charging or using it.



## Recommendations for care and safe use of our products

- Handle with care and keep in a clean and dust-free place.

- **Warning!** May explode if disposed of in fire.
- Do not expose to liquid or moisture or excess humidity.
- For optimum performance, the product should not be operated in temperatures below +14°F(-10°C) or above +113°F(+45°C). Do not expose the battery to temperatures above +140°F(+60°C).



- Do not expose to flames or lit tobacco products.
- Do not drop, throw or try to bend the product.
- Do not paint or attempt to disassemble or modify the product. Only Sony Ericsson authorized personnel should perform service.



- Consult with authorized medical staff and the instructions of the medical device manufacturer before using the product near pacemakers or other medical devices or equipment.



- Discontinue use of electronic devices, or disable the radio transmitting functionality of the device, where required or requested to do so.
- Do not use where a potentially explosive atmosphere exists.
- Do not place the product, or install wireless equipment, in the area above an air bag in a car.
- **Caution:** Cracked or broken displays may create sharp edges or splinters that could be harmful upon contact.
- Do not use the Bluetooth Headset in positions where it is uncomfortable or will be subject to pressure.

## Children

**Warning!** Keep out of the reach of children. Do not allow children to play with phones or accessories. They could hurt themselves or others. Products may contain small parts that could become detached and create a choking hazard.



## Power supply (Charger)

Connect the charger to power sources as marked on the product. Do not use outdoors or in damp areas. Do not alter or subject the cord to damage or stress. Unplug the unit before

cleaning it. Never alter the plug. If it does not fit into the outlet, have a proper outlet installed by an electrician. When a power supply is connected there is a small drain of power. To avoid this small energy waste, disconnect the power supply when the product is fully charged. Use of charging devices that are not Sony Ericsson branded may pose increased safety risks.

### **Battery**

New or idle batteries can have short-term reduced capacity. Fully charge the battery before initial use. Use for the intended purpose only. Charge the battery in temperatures between +41°F(+5°C) and +113°F(+45°C). Do not put the battery into your mouth. Do not let the battery contacts touch another metal object. Turn off the product before removing the battery. Performance depends on temperatures, signal strength, usage patterns, features selected and voice or data transmissions. Only Sony Ericsson service partners should remove or replace built-in batteries. Use of batteries that are not Sony Ericsson branded may pose increased safety risks. Replace the battery only with another Sony Ericsson battery that has been qualified with the product per the standard IEEE-1725. Use of an unqualified battery may present a risk of fire, explosion, leakage or other hazard.

### **Personal medical devices**

Phones may affect implanted medical equipment. Reduce risk of interference by keeping a minimum distance of 6 inches (15 cm) between the phone and the device. Use the phone at your right ear. Do not carry the phone in your breast pocket. Turn off the phone if you suspect interference. For all medical devices, consult a physician and the manufacturer.

### **Driving**

Some vehicle manufacturers forbid the use of phones in their vehicles unless a handsfree kit with an external antenna supports the installation. Check with the vehicle manufacturer's representative to be sure that the phone or Bluetooth handsfree

will not affect the electronic systems in the vehicle. Full attention should be given to driving at all times and local laws and regulations restricting the use of wireless devices while driving must be observed.

### **GPS/Location based functions**

Some products provide GPS/Location based functions. Location determining functionality is provided "As is" and "With all faults". Sony Ericsson does not make any representation or warranty as to the accuracy of such location information.

Use of location-based information by the device may not be uninterrupted or error free and may additionally be dependent on network service availability. Please note that functionality may be reduced or prevented in certain environments such as building interiors or areas adjacent to buildings.

Caution: Do not use GPS functionality in a manner which causes distraction from driving.

### **Emergency calls**

Calls cannot be guaranteed under all conditions. Never rely solely upon phones for essential communication. Calls may not be possible in all areas, on all networks, or when certain network services and/or phone features are used.

### **Antenna**

Use of antenna devices not marketed by Sony Ericsson could damage the phone, reduce performance, and produce SAR levels above the established limits. Do not cover the antenna with your hand as this affects call quality, power levels and can shorten talk and standby times.

### **Radio Frequency (RF) exposure and Specific Absorption Rate (SAR)**

When the phone or Bluetooth handsfree is turned on, it emits low levels of radio frequency energy. International safety guidelines have been developed through periodic and thorough evaluation of scientific studies. These guidelines establish

permitted levels of radio wave exposure. The guidelines include a safety margin designed to assure the safety of all persons and to account for any variations in measurements.

Specific Absorption Rate (SAR) is used to measure radio frequency energy absorbed by the body when using a phone. The SAR value is determined at the highest certified power level in laboratory conditions, but because the phone is designed to use the minimum power necessary to access the chosen network, the actual SAR level can be well below this value. There is no proof of difference in safety based on difference in SAR value.

Products with radio transmitters sold in the US must be certified by the Federal Communications Commission (FCC). When required, tests are performed when the phone is placed at the ear and when worn on the body. For body-worn operation, the phone has been tested when positioned a minimum of 15 mm from the body without any metal parts in the vicinity of the phone or when properly used with an appropriate Sony Ericsson accessory and worn on the body.

For more information about SAR and radio frequency exposure, go to: [www.sonyericsson.com/health](http://www.sonyericsson.com/health).

### **Flight mode**

Bluetooth and WLAN functionality, if available in the device, can be enabled in Flight mode but may be prohibited onboard aircraft or in other areas where radio transmissions are prohibited. In such environments, please seek proper authorization before enabling Bluetooth or WLAN functionality even in Flight mode.

### **Malware**

Malware (short for malicious software) is software that can harm the phone or other computers. Malware or harmful applications can include viruses, worms, spyware, and other unwanted programs. While the device does employ security measures to resist such efforts, Sony Ericsson does not warrant or represent that the device will be impervious to the introduction of malware. You can however reduce the risk of malware attacks by using



care when downloading content or accepting applications, refraining from opening or responding to messages from unknown sources, using trustworthy services to access the Internet, and only downloading content to the phone from known, reliable sources.

### **Accessories**

Use only Sony Ericsson branded original accessories and certified service partners. Sony Ericsson does not test third-party accessories. Accessories may influence RF exposure, radio performance, loudness, electric safety and other areas. Third-party accessories and parts may pose a risk to your health or safety or decrease performance.

### **Accessible Solutions/Special Needs**

In the US, compatible Sony Ericsson phones may offer compatibility with TTY terminals (with use of necessary accessory). For more information call the Sony Ericsson Special Needs Center on 877 878 1996 (TTY) or 877 207 2056 (voice), or go to [www.sonyericsson-snc.com](http://www.sonyericsson-snc.com).

### **Disposal of old electrical and electronic equipment**

Electronic equipment and batteries should not be included as household waste but should be left at an appropriate collection point for recycling. This helps prevent potential negative consequences for the environment and human health. Check local regulations by contacting your local city office, your household waste disposal service, the shop where you purchased the product or calling a Sony Ericsson Contact Center. Do not attempt to remove internal batteries. Internal batteries shall be removed only by a waste treatment facility or trained service professional.



### Disposing of the battery

Check local regulations or call a Sony Ericsson Contact Center for information. Never use municipal waste.



### Memory card

If the product comes complete with a removable memory card, it is generally compatible with the handset purchased but may not be compatible with other devices or the capabilities of their memory cards. Check other devices for compatibility before purchase or use. If the product is equipped with a memory card reader, check memory card compatibility before purchase or use.

Memory cards are generally formatted prior to shipping. To reformat the memory card, use a compatible device. Do not use the standard operating system format when formatting the memory card on a PC. For details, refer to the operating instructions of the device or contact customer support.

### Warning!

If the device requires an adapter for insertion into the handset or another device, do not insert the card directly without the required adapter.

### Precautions on memory card use

- Do not expose the memory card to moisture.
- Do not touch terminal connections with your hand or any metal object.
- Do not strike, bend, or drop the memory card.
- Do not attempt to disassemble or modify the memory card.
- Do not use or store the memory card in humid or corrosive locations or in excessive heat such as a closed car in summer, in direct sunlight or near a heater, etc.
- Do not press or bend the end of the memory card adapter with excessive force.
- Do not let dirt, dust, or foreign objects get into the insert port of any memory card adapter.
- Check you have inserted the memory card correctly.

- Insert the memory card as far as it will go into any memory card adapter needed. The memory card may not operate properly unless fully inserted.
- We recommend that you make a backup copy of important data. We are not responsible for any loss or damage to content you store on the memory card.
- Recorded data may be damaged or lost when you remove the memory card or memory card adapter, turn off the power while formatting, reading or writing data, or use the memory card in locations subject to static electricity or high electrical field emissions.

### **Protection of personal information**

Erase personal data before disposing of the product. To delete data, perform a master reset. Deleting data from the phone memory does not ensure that it cannot be recovered.

Sony Ericsson does not warrant against recovery of information and does not assume responsibility for disclosure of any information even after a master reset.

### **Loudness warning!**

Avoid volume levels that may be harmful to your hearing.

## **End User License Agreement**

Software delivered with this device and its media is owned by Sony Ericsson Mobile Communications AB, and/or its affiliated companies and its suppliers and licensors.

Sony Ericsson grants you a non-exclusive limited license to use the Software solely in conjunction with the Device on which it is installed or delivered. Ownership of the Software is not sold, transferred or otherwise conveyed.

Do not use any means to discover the source code or any component of the Software, reproduce and distribute the Software, or modify the Software. You are entitled to transfer rights and obligations to the Software to a third party, solely together with the Device with which you received the Software,

provided the third party agrees in writing to be bound by the terms of this License.

This license exists throughout the useful life of this Device. It can be terminated by transferring your rights to the Device to a third party in writing.

Failure to comply with any of these terms and conditions will terminate the license immediately.

Sony Ericsson and its third party suppliers and licensors retain all rights, title and interest in and to the Software. To the extent that the Software contains material or code of a third party, such third parties shall be beneficiaries of these terms.

This license is governed by the laws of Sweden. When applicable, the foregoing applies to statutory consumer rights.

In the event Software accompanying or provided in conjunction with your device is provided with additional terms and conditions, such provisions shall also govern your possession and usage of the Software.

## Export regulations

Export regulations: This product, including any software or technical data contained in or accompanying the product, may be subject to import and export regulations of the European Union, the United States and other countries. The user and any possessor of the product agrees to comply strictly with all such regulations and acknowledges that it is their responsibility to obtain any required licenses to export, re-export, or import this product. Without limiting the foregoing, and as an example, the user and any possessor of the product: (1) must not knowingly export or re-export Products to destinations identified pursuant to Articles in Chapter II of European Council Regulation (EC) 1334/2000; (2), must comply with U.S. government Export Administration Regulations ("EAR", 15 C.F.R. §§ 730-774, <http://www.bis.doc.gov/> ) administered by Department of Commerce, Bureau of Industry and Security; and (3) must comply with economic sanctions regulations (30 C.F.R. §§ 500 et. seq.,, <http://www.treas.gov/offices/enforcement/ofac/>) administered by

the U.S. Department of Treasury, Office of Foreign Assets Control. The user and any possessor of the product may not transport or deliver the product, its accessories or separate software to any country, region, entity or person prohibited by these regulations.

## Limited Warranty

Sony Ericsson Mobile Communications AB, SE-221 88 Lund, Sweden, (Sony Ericsson) or its local affiliated company, provides this Limited Warranty for your phone, original accessory delivered with your phone, and/or your mobile computing product (hereinafter referred to as "Product").

Should your Product need warranty service, please return it to the dealer from whom it was purchased, or contact your local Sony Ericsson Contact Center (national rates may apply) or visit [www.sonyericsson.com](http://www.sonyericsson.com) to get further information.

## Our warranty

Subject to the conditions of this Limited Warranty, Sony Ericsson warrants this Product to be free from defects in design, material and workmanship at the time of its original purchase by a consumer. This Limited Warranty will last for a period of one (1) year as from the original date of purchase of the Product.

## What we will do

If, during the warranty period, this Product fails to operate under normal use and service, due to defects in design, materials or workmanship, Sony Ericsson authorized distributors or service partners, in the country/region\* where you purchased the Product, will, at their option, either repair or replace the Product in accordance with the terms and conditions stipulated herein.

Sony Ericsson and its service partners reserve the right to charge a handling fee if a returned Product is found not to be under warranty according to the conditions below.

Please note that some of your personal settings, downloads and other information may be lost when your Sony Ericsson

Product is repaired or replaced. At present, Sony Ericsson may be prevented by applicable law, other regulation or technical restrictions from making a backup copy of certain downloads. Sony Ericsson does not take any responsibility for any lost information of any kind and will not reimburse you for any such loss. You should always make backup copies of all the information stored on your Sony Ericsson Product such as downloads, calendar and contacts before handing in your Sony Ericsson Product for repair or replacement.

### **Conditions**

1. This Limited Warranty is valid only if the original proof of purchase for this Product issued by a Sony Ericsson authorized dealer specifying the date of purchase and serial number\*\*, is presented with the Product to be repaired or replaced. Sony Ericsson reserves the right to refuse warranty service if this information has been removed or changed after the original purchase of the Product from the dealer.
2. If Sony Ericsson repairs or replaces the Product, the repair for the defect concerned, or the replaced Product shall be warranted for the remaining time of the original warranty period or for ninety (90) days from the date of repair, whichever is longer. Repair or replacement may involve the use of functionally equivalent reconditioned units. Replaced parts or components will become the property of Sony Ericsson.
3. This warranty does not cover any failure of the Product due to normal wear and tear, or due to misuse, including but not limited to use in other than the normal and customary manner, in accordance with the Sony Ericsson instructions for use and maintenance of the Product. Nor does this warranty cover any failure of the Product due to accident, software or hardware modification or adjustment, acts of God or damage resulting from liquid.

A rechargeable battery can be charged and discharged more than a hundred times. However, it will eventually wear out – this is not a defect and corresponds to normal wear and tear. When the talk-time or standby time is noticeably shorter, it is

time to replace the battery. Sony Ericsson recommends that you use only batteries and chargers approved by Sony Ericsson.

Minor variations in display brightness and color may occur between phones. There may be tiny bright or dark dots on the display. These are called defective pixels and occur when individual dots have malfunctioned and can not be adjusted. Two defective pixels are deemed acceptable.

Minor variations in camera image appearance may occur between phones. This is nothing uncommon and is not regarded as a defective camera module.

4. Since the cellular system on which the Product is to operate is provided by a carrier independent from Sony Ericsson, Sony Ericsson will not be responsible for the operation, availability, coverage, services or range of that system.
5. This warranty does not cover Product failures caused by installations, modifications, or repair or opening of the Product performed by a non-Sony Ericsson authorized person.
6. The warranty does not cover Product failures which have been caused by use of accessories or other peripheral devices which are not Sony Ericsson branded original accessories intended for use with the Product.
7. Tampering with any of the seals on the Product will void the warranty.
8. THERE ARE NO EXPRESS WARRANTIES, WHETHER WRITTEN OR ORAL, OTHER THAN THIS PRINTED LIMITED WARRANTY. ALL IMPLIED WARRANTIES, INCLUDING WITHOUT LIMITATION THE IMPLIED WARRANTIES OF MERCHANTABILITY OR FITNESS FOR A PARTICULAR PURPOSE, ARE LIMITED TO THE DURATION OF THIS LIMITED WARRANTY. IN NO EVENT SHALL SONY ERICSSON OR ITS LICENSORS BE LIABLE FOR INCIDENTAL OR CONSEQUENTIAL DAMAGES OF ANY NATURE WHATSOEVER, INCLUDING BUT NOT LIMITED TO LOST PROFITS OR COMMERCIAL LOSS TO THE FULL EXTENT THOSE DAMAGES CAN BE DISCLAIMED BY LAW.

Some countries/states do not allow the exclusion or limitation of incidental or consequential damages, or limitation of the duration of implied warranties, so the preceding limitations or exclusions may not apply to you.

The warranty provided does not affect the consumer's statutory rights under applicable legislation in force, nor the consumer's rights against the dealer arising from their sales / purchase contract.

### **\*Geographical scope of the warranty**

If you have purchased your Product in a country member of the European Economic Area (EEA) or in Switzerland or the Republic of Turkey, and such Product was intended for sale in the EEA or in Switzerland or in Turkey, you can have your Product serviced in any EEA country or in Switzerland or in Turkey, under the warranty conditions prevailing in the country in which you require servicing, provided that an identical Product is sold in such country by an authorized Sony Ericsson distributor. To find out if your Product is sold in the country you are in, please call the local Sony Ericsson Contact Center. Please observe that certain services may not be available outside the country of original purchase, for example, due to the fact that your Product may have an interior or exterior which is different from equivalent models sold in other countries. Please note in addition that it may sometimes not be possible to repair SIM-locked Products.

\*\* In some countries/regions additional information (such as a valid warranty card) may be requested.

## **Trademarks and acknowledgements**

The Liquid Identity logo and Xperia are trademarks or registered trademarks of Sony Ericsson Mobile Communications AB.

Sony is a trademark or a registered trademark of Sony Corporation.

Ericsson is a trademark or registered trademark of Telefonaktiebolaget LM Ericsson.



Bluetooth is a trademark or a registered trademark of Bluetooth SIG Inc. and any use of such mark by Sony Ericsson is under license.

Other product and company names mentioned herein may be the trademarks of their respective owners.

Any rights not expressly granted herein are reserved.

## Support

Anguilla	1-800-080-9518 (Toll Free)	questions.CO@support.sonyericsson.com
Antigua and Barbuda	1-800-081-9518 (Toll Free)	questions.CO@support.sonyericsson.com
Argentina	0800-333-7427 (número gratuito)	questions.CO@support.sonyericsson.com
Australia	1300 650-050 (Toll Free)	questions.AU@support.sonyericsson.com
The Bahamas	1-800-205-6062 (Toll Free)	questions.CO@support.sonyericsson.com
Barbados	1-800-082-9518 (Toll Free)	questions.CO@support.sonyericsson.com
Belgique/ België	02-0745 1611	questions.BE@support.sonyericsson.com
Belize	AN 815, PIN 5597 (Toll Free)	questions.CO@support.sonyericsson.com
Bermuda	1-800-083-9518 (Toll Free)	questions.CO@support.sonyericsson.com
Bolivia	800-100-542 (número gratuito)	questions.CO@support.sonyericsson.com
Brasil	4001-0444 (ligação gratuita)	questions.BR@support.sonyericsson.com
Canada	1 866 766 9374 (Toll Free / sans frais)	questions.CA@support.sonyericsson.com
Cayman Islands	1-800-084-9518 (Toll Free)	questions.CO@support.sonyericsson.com
Central and Southern Africa	+27 11 506 0123	questions.CF@support.sonyericsson.com
Česká republika	844 550 055	questions.CZ@support.sonyericsson.com
Chile	800-646-425 (número gratuito)	questions.CO@support.sonyericsson.com
Colombia	01800-0966-080 (número gratuito)	questions.CO@support.sonyericsson.com
Costa Rica	0 800 011 0400 (número gratuito)	questions.CO@support.sonyericsson.com
Danmark	3331 2828	questions.DK@support.sonyericsson.com

Deutschland	0180 534 2020 (ortsübliche Gebühren)	questions.DE@support.sonyericsson.com
Dominica	1-800-085-9518 (Toll Free)	questions.CO@support.sonyericsson.com
Ecuador	1-800-0102-50 (número gratuito)	questions.CO@support.sonyericsson.com
Eesti	06 032 032	questions.EE@support.sonyericsson.com
Egypt/مصر	16727	questions.EG@support.sonyericsson.com
Ελλάδα	801 11 810 810 +30 210 899 19 19 (από κινητό τηλέφωνο)	questions.GR@support.sonyericsson.com
El Salvador	800-6323 (número gratuito)	questions.CO@support.sonyericsson.com
España	902 180 576 (tarifa local)	questions.ES@support.sonyericsson.com
France	09 69 32 21 21 09 69 32 21 22 (Xperia™ uniquement)	questions.FR@support.sonyericsson.com
Guatemala	1-800-300-0057 (número gratuito)	questions.CO@support.sonyericsson.com
Haïti/Ayiti	AN 193, PIN 5598 (numéro gratuit / nimewo gratis)	questions.CO@support.sonyericsson.com
Honduras	AN 8000122, PIN 5599 (número gratuito)	questions.CO@support.sonyericsson.com
Hong Kong/香港	+852 8203 8863	questions.HK@support.sonyericsson.com
Hrvatska	062 000 000	questions.HR@support.sonyericsson.com
India/भारत	1800 11 1800 (Toll Free) +91 (011) 39011111	questions.IN@support.sonyericsson.com
Indonesia	021 2701388	questions.ID@support.sonyericsson.com
Ireland	1850 545 888 (Local rate)	questions.IE@support.sonyericsson.com
Italia	06 48895206 (tariffa locale)	questions.IT@support.sonyericsson.com
Jamaica	1-800-442-3471 (Toll Free)	questions.CO@support.sonyericsson.com

Kύπρος/ Kıbrıs	0800 90 909	questions.CY@support.sonyericsson.com
Latvija	67 21 43 01	questions.LV@support.sonyericsson.com
Lietuva	8 700 55030	questions.LT@support.sonyericsson.com
Magyarország	01 880 47 47	questions.HU@support.sonyericsson.com
Malaysia	1800-88-9900 (Toll Free / bebas tol)	questions.MY@support.sonyericsson.com
Maroc/ المغرب	+212 2 2958 344	questions.MA@support.sonyericsson.com
México	0 1800 000 4722 (número gratuito)	questions.MX@support.sonyericsson.com
Nederland	0900 8998318	questions.NL@support.sonyericsson.com
Nederlandse Antillen	001-866-509-8660 (gratis nummer)	questions.CO@support.sonyericsson.com
New Zealand	0800-100-150 (Toll Free)	questions.NZ@support.sonyericsson.com
Nicaragua	AN 1800-0166, PIN 5600 (número gratuito)	questions.CO@support.sonyericsson.com
Norge	815 00 840 (lokaltakst)	questions.NO@support.sonyericsson.com
Österreich	0810 200 245	questions.AT@support.sonyericsson.com
Pakistan/ پاکستان	021 - 111 22 55 73	questions.PK@support.sonyericsson.com
Panamá	00800-787-0009 (número gratuito)	questions.CO@support.sonyericsson.com
Paraguay	009 800 54 20032 (número gratuito)	questions.CO@support.sonyericsson.com
Perú	0800-532-38 (número gratuito)	questions.CO@support.sonyericsson.com
Philippines/ Pilipinas	+63 2 7891860	questions.PH@support.sonyericsson.com
Polska	+48 22 22 77 444	questions.PL@support.sonyericsson.com
Portugal	808 204 466 (chamada local)	questions.PT@support.sonyericsson.com
República Dominicana	1-800-751-3370 (número gratuito)	questions.CO@support.sonyericsson.com
România	+40 21 401 0401	questions.RO@support.sonyericsson.com
Saint Kitts and Nevis	1-800-087-9518 (Toll Free)	questions.CO@support.sonyericsson.com

Saint Vincent and the Grenadines	1-800-088-9518 (Toll Free)	questions.CO@support.sonyericsson.com
Schweiz/ Suisse/ Svizzera	0848 824 040	questions.CH@support.sonyericsson.com
Singapore	+65 6744 0733	questions.SG@support.sonyericsson.com
Slovenia	01 600 5000	questions.SI@support.sonyericsson.com
Slovensko	02 5443 6443	questions.SK@support.sonyericsson.com
South Africa	0861 632222	questions.ZA@support.sonyericsson.com
South Korea/ 대한민국	(+82) 1588 4170	questions.KO@support.sonyericsson.com
Suomi	09 299 2000	questions.FI@support.sonyericsson.com
Sverige	013 24 45 00 (lokal taxa)	questions.SE@support.sonyericsson.com
Trinidad and Tobago	1-800-080-9521 (Toll Free)	questions.CO@support.sonyericsson.com
Türkiye	+90 212 473 77 77	questions.TR@support.sonyericsson.com
United Kingdom	08705 237 237 (Local rate)	questions.GB@support.sonyericsson.com
United States	1 866 766 9374	questions.US@support.sonyericsson.com
Uruguay	000-401-787-013 (número gratuito)	questions.CO@support.sonyericsson.com
Venezuela	0-800-1-00-2250 (número gratuito)	questions.CO@support.sonyericsson.com
Việt Nam	1900 1525 (miễn phí)	questions.VN@support.sonyericsson.com
Беларусь	8 82 00 361 0001	questions.BY@support.sonyericsson.com
България	0800 1 8778	questions.BG@support.sonyericsson.com
Россия	+7 (495) 7870986	questions.RU@support.sonyericsson.com
Україна	(+380) 44 590 1515	questions.UA@support.sonyericsson.com
الأردن	+971 4 3919 880	questions.JO@support.sonyericsson.com
الإمارات العربية المتحدة	+971 4 3919 880 (UAE)	questions.AE@support.sonyericsson.com
الكويت	+971 4 3919 880	questions.KW@support.sonyericsson.com
المملكة العربية السعودية	800-8200-727	questions.SA@support.sonyericsson.com
中国	+86 400 810 0000	questions.CN@support.sonyericsson.com
台灣	+886 2 25625511	questions.TW@support.sonyericsson.com
ไทย	02 2483 030	questions.TH@support.sonyericsson.com

[www.sonyericsson.com](http://www.sonyericsson.com)



**Sony Ericsson**

Sony Ericsson Mobile Communications AB  
SE-221 88 Lund, Sweden

1223-9693.2