

# User guide

**Thank you** for purchasing a Sony Ericsson C901 Cyber-shot™. For additional phone content, go to [www.sonyericsson.com/fun](http://www.sonyericsson.com/fun). Register now to get free online storage and special offers at [www.sonyericsson.com/myphone](http://www.sonyericsson.com/myphone). For product support, go to [www.sonyericsson.com/support](http://www.sonyericsson.com/support). Please read the *important information* before you use your mobile phone.

## Instruction symbols

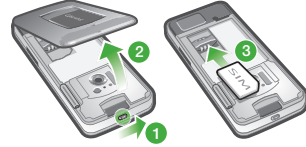
These symbols may appear in the User guide.

- ! Note
- Tip
- Warning
- > Use a selection or navigation key to scroll and select. See *Navigation* on page 12.

## Getting started

**Assembly**  
Before you start using your phone, you need to insert a SIM card and the battery.

### To insert the SIM card



- 1 Unlock the battery cover lock.
- 2 Remove the battery cover.
- 3 Slide the SIM card into its holder with the gold-coloured contacts facing down.

### To insert the battery



- 1 Insert the battery with the label side up and the connectors facing each other.
- 2 Attach the battery cover and lock it.

## Turning on the phone

To turn on the phone



- 1 Press and hold down **⏻**.
- 2 Enter your SIM card PIN, if requested, and select **OK**.
- 3 Select a language.
- 4 Follow the instructions to use the setup wizard for basic settings and useful tips.

! If you want to correct a mistake when you enter your PIN, press **⏻**.

### Help

In addition to this User guide, an extended User guide, Feature guides and more information are available at [www.sonyericsson.com/support](http://www.sonyericsson.com/support). Help and information are also available in your phone.

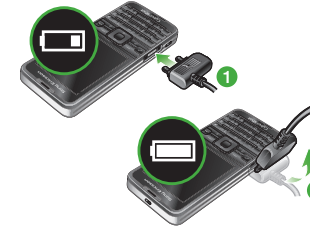
- To access the User guide
- Select **Menu** > **Settings** > **User help** > **User guide**.
- To view tips and tricks
- Select **Menu** > **Settings** > **User help** > **Tips and tricks**.
- To view information about functions
- Scroll to a function and select **Info**, if available. In some cases, **Info** appears under **Options**.

- To view the phone status
- Press **⏻** and then press the volume key. Phone, memory and battery information is shown.

## Charging the battery

The phone battery is partly charged when you buy it.

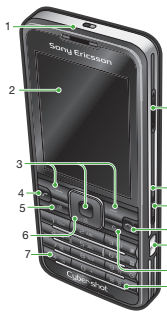
To charge the battery



- 1 Connect the charger to the phone. It takes approximately 2.5 hours to fully charge the battery. Press a key to view the screen.
  - 2 Remove the charger by tilting the plug upwards.
- ! You can use your phone while it is charging. You can charge the battery at any time and for more or less than 2.5 hours. You can interrupt the charging without damaging the battery.

## Phone overview

- 1 Ear speaker
- 2 Screen
- 3 Selection keys
- 4 Call key
- 5 Activity menu key
- 6 Navigation key
- 7 Keypad key
- 8 Volume, digital zoom keys
- 9 Camera view key
- 10 Camera mode key
- 11 End, On/off key
- 12 Camera key
- 13 C key (Clear)
- 14 Silent key



- 15 Flash
- 16 Camera lens
- 17 Retractable lens cover
- 18 Memory card slot (under the cover)
- 19 Connector for charger, handfree and USB cable
- 20 Loudspeaker
- 21 Strap holder



## Menu overview\*

- PlayNow™\*
  - File manager
- Cyber-shot™
  - Alarms
  - Calls\*\*
    - All
    - Answered
    - Dialled
    - Missed
  - Internet
  - Messaging
    - Write new
    - Inbox/Conversations
    - Messages, Email, IM, Call voicemail
  - Contacts
    - Myself, New contact

- Organiser
  - Applications, Video call, Calendar, Tasks, Notes, Synchronisation, Timer, Stopwatch, Calculator, Code memo
- Entertainment
  - Online services, TrackID™, Location services, Games, VideoDJ™, PhotoDJ™, MusicDJ™, Remote control, Record sound, Demo tour
- Media
  - Photo, Music, Video, Games, Web feeds, Settings
- Radio
  - Profiles, Time & date, Language, Update service, Voice control, New events, Shortcuts

- Flight mode, Security, Setup wizard, Accessibility, Phone status, Master reset
- Sounds & alerts
  - Ring volume, Fingtone, Silent mode, Increasing ring, Vibrating alert, Message alert, Key sound
- Display
  - Wallpaper, Main menu layout, Theme, Startup screen, Screen saver, Clock size, Brightness, Edit line names
- Calls
  - Speed dial, Smart search, Divert calls, Switch to line 2, Manage calls, Time & cost, Show/Hide my no., Handfree
- Connectivity
  - Bluetooth, USB, Phone name, Synchronisation,

\* Some menus are operator-, network- and subscription-dependent. \*\* You can use the navigation key to scroll between tabs in submenus. For more information, see *Navigation* on page 12.

## Navigation

- To access the main menu
- When **Menu** appears on the screen, press the centre selection key to select **Menu**.
  - If **Menu** does not appear on the screen, press **⏻**, and then press the centre selection key to select **Menu**.

To navigate the phone menus



- Press the navigation key **⏻**, **⏻**, **⏻** or **⏻** to move through the menus.

To end a function

- Press **⏻**.

To return to standby

- Press **⏻**.

To delete items

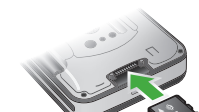
- Press **⏻** to delete items such as numbers, letters, pictures and sounds.

### Memory card

! You may have to purchase a memory card separately.

Your phone supports Memory Stick Micro™ (M2™) memory card adding more storage space to your phone. It can also be used as a portable memory card with other compatible devices. You can move content between a memory card and the phone memory. See *Handling content in the phone* on page 19.

To insert a memory card



- Remove the battery cover and insert the memory card with the gold-coloured contacts facing down.

### Entering text

You can use multitap text input or T9™ Text Input **T9** to enter text. The T9 Text Input method uses a built-in dictionary.

To change text input method

- When you enter text, press and hold down **⏻**.

To shift between capitals and lower-case letters

- When you enter text, press **⏻**.

To enter numbers

- When you enter text, press and hold down **⏻** - **⏻**.

To enter full stops and commas

- When you enter text, press **⏻**.

To enter a symbol

- 1 When you enter text, select **Options** > **Add symbol**.
- 2 Scroll to a symbol and select **Insert**.

To enter text using T9™ Text Input

- 1 Select, for example, **Menu** > **Messaging** > **Write new** > **Message**.
- 2 If **T9** is not displayed, press and hold down **⏻** to change to T9 Text Input.
- 3 Press each key only once, even if the letter you want is not the first letter on the key. For example, to write the word "Jane", press **5**, **2**, **6**, **3**. Write the whole word before looking at the suggestions.
- 4 Use **⏻** or **⏻** to view suggestions.
- 5 Press **⏻** to accept a suggestion.

To enter text using multitap

- 1 From standby select, for example, **Menu** > **Messaging** > **Write new** > **Message**.
- 2 If **T9** is displayed, press and hold down **⏻** to change to multitap text input.
- 3 Press **⏻** - **⏻** repeatedly until the desired letter appears.
- 4 When a word is written, press **⏻** to add a space.

## Cyber-shot™

You can take photos and record video clips to view, save or send. You find saved photos and video clips in **Media** and in **File manager**.

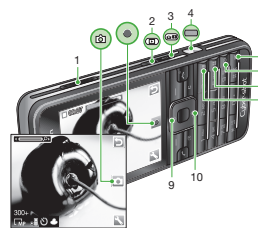
## Using the camera

To activate the camera



- Open the retractable lens cover.

### Viewfinder and camera keys



- 1 Zoom in or out
- 2 View photos and videos
- 3 Select still camera or video camera
- 4 Take photos/Record video
- 5 Photo: **Flash Video: Light**
- 6 **Self-timer**
- 7 Photo: **Scenes Video: Night mode**
- 8 Photo: **Shoot mode Video: Video length**
- 9 Decrease brightness
- 10 Increase brightness

To take a photo

- 1 Activate the camera and press **⏻** to select **⏻**.
- 2 Press **⏻** halfway down to use auto focus.
- 3 When the dot and focus frame are green, press **⏻** fully down to take a photo. The photo is automatically saved.

To record a video clip

- 1 Activate the camera and press **⏻** to select **⏻**.
- 2 Press **⏻** fully down to start recording.
- 3 To stop recording, press **⏻** fully down. The video clip is automatically saved.

To use zoom

- Press the volume key.

To adjust brightness

- Press the navigation key. The amount of brightness is shown beside the **⏻**.

To view photos and video clips

- 1 Activate the camera and press **⏻**.
- 2 Scroll to the item.
- 3 To view a video clip, press the centre selection key.

### More camera features

To change settings

- Activate the camera and select **⏻**.

To view information about settings

- Scroll to a setting and select **⏻**.

### Photo fix

You can use Photo fix to improve photos. In a one-click operation, brightness, light and contrast are adjusted to give you the best possible photo. The improvements are saved as a copy of the photo. The original photo is not affected.

To improve a photo with Photo fix

- 1 Activate the camera and press **⏻** to select **⏻**.
- 2 Make sure **Review** is set to **On**. Select **⏻** > **Settings** and scroll to **Review** > **On**. Select **⏻** to return to the viewfinder.
- 3 Take a photo.
- 4 During review, select **Options** > **Photo fix**.

### Face detection

You can use face detection to bring an off-centre face into focus. The camera automatically detects up to three faces, indicated by white frames. A green frame shows which face

has been selected when auto-focus is used. Focus is set to the face closest to the camera.

To set face detection

- 1 Activate the camera and press **⏻** to select **⏻**.
- 2 Select **⏻** > **Focus** > **Face detection**.

### Smile Shutter™

Smile Shutter allows you to capture the smiles of family and friends. The camera detects up to three faces and selects one face for smile detection and auto focus. A yellow frame shows which face is selected. When the selected face smiles, the camera automatically takes a photo.

To set Smile Shutter™

- 1 Activate the camera and press **⏻** to select **⏻**.
- 2 Select **⏻** > **Shoot mode** > **Smile Shutter**™.
- 3 When **⏻** appears, the camera is in Smile Shutter mode.

To use Smile Shutter™

- 1 Activate the camera and press **⏻** to select **⏻**.
- 2 When you see the yellow frame, press **⏻** fully down. When **⏻** appears, smile detection is activated.
- 3 The camera automatically takes the photo when the subject smiles.
- 4 To take a photo although no smile is detected, press **⏻** fully down again.

## Transferring and handling content

You can transfer and handle content such as pictures and music.

! You are not allowed to exchange some copyright-protected material. **⏻** identifies a protected item.

### Handling content in the phone

You can use **File manager** to handle content saved in the phone memory or on a memory card. Tabs and icons in **File manager** show where the content is saved. If the memory is full, delete some content to create space.

To select more than one item in a folder

- 1 Select **Menu** > **Organiser** > **File manager**.
- 2 Scroll to a folder and select **Open**.
- 3 Select **Options** > **Mark** > **Mark several**.
- 4 For each item you want to mark, scroll to the item and select **Mark**.

To move items between the phone memory and the memory card

- 1 Select **Menu** > **Organiser** > **File manager**.
- 2 Find an item and select **Options** > **Manage file** > **Move**.
- 3 Select **Memory card** or **Phone**.
- 4 Scroll to a folder and select **Open**.
- 5 Select **Paste**.

### Sending content to another phone

You can send content, for example, in messages or using Bluetooth™ wireless technology.

To send content

- 1 Scroll to an item and select **Options** > **Send**.
- 2 Select a transfer method.

! Make sure the receiving device supports the transfer method you select.

### Using a USB cable

You can connect your phone to a computer with a USB cable to synchronise, transfer and back up phone content and use your phone as a modem. For more information, go to [www.sonyericsson.com/support](http://www.sonyericsson.com/support) to read Feature guides.

! You may have to purchase a USB cable separately.

### Before using a USB cable

See *Required operating systems* on page 21.

! Only use a USB cable supported by your phone. Do not remove the USB cable from your phone or computer during transfer as this may corrupt the memory card or the phone memory.

To disconnect the USB cable safely

- 1 Computer: Close any software that you are using with your phone.
- 2 Disconnect the USB cable.

### Drag and drop content

You can drag and drop content between your phone, a memory card and a computer in *Microsoft Windows Explorer*.

To drag and drop content

- 1 Connect your phone to a computer using a USB cable.

- 2 Phone: Select **Media transfer**. The phone will remain activated during file transfer.
- 3 Computer: Wait until the phone memory and memory card appear as external disks in *Windows Explorer*.
- 4 Drag and drop selected files between the phone and the computer.

### Transferring content to and from a computer

You can use **Media Go™** to transfer media content between your phone and a computer.

! **Media Go™** is available for download at [www.sonyericsson.com/support](http://www.sonyericsson.com/support).

### Required operating systems

You need one of these operating systems to use Sony Ericsson PC software:

- Microsoft® Windows Vista™
- Microsoft® Windows XP, Service Pack 2 or higher

To download Media Go™

- 1 Computer: In your Internet browser, go to [www.sonyericsson.com/support](http://www.sonyericsson.com/support).
- 2 Select a region and country.
- 3 Select **Software downloads**.
- 4 Select a phone from the list.
- 5 Select **Read more and download** under **Media Go™**.
- 6 Select **Download now** and save the file to your computer.

! Remember where you save the file.

To install Media Go™ from the downloaded file

- 1 Locate the downloaded **Media Go™** file on the computer.

2 Double-click the file and follow the instructions.

To transfer content using Media Go™

⚠ Do not remove the USB cable from your phone or computer during transfer, as this may corrupt the memory card or the phone memory.

- 1 Connect the phone to a computer with a USB cable supported by your phone.
- 2 **Computer:** Select *Start/Programs/Sony/Media Go™*.
- 3 **Phone:** Select **Media transfer**.
- 4 **Computer:** Select *Transfer to or from Device using Media Go™* and click **OK**.
- 5 Wait until the phone appears in **Media Go™**.
- 6 Move files between your phone and the computer in **Media Go™**.

## Calling

### Making and receiving calls

You need to turn on your phone and be within range of a network.

To make a call

- 1 Enter a phone number (with international country code and area code, if applicable).
- 2 Press **(☎)**.

⚡ You can call numbers from your contacts and call list. See *Contacts* on page 24, and *Call list* on page 24.

To end a call

- Press **(⏏)**.

To make international calls

- 1 Press and hold down **(☎)** until a "+" sign appears.
- 2 Enter the country code, area code (without the first zero) and phone number.
- 3 Press **(☎)**.

To answer a call

- Press **(☎)**.

To reject a call

- Press **(⏏)**.

To change the ear speaker volume during a call

- Press the volume key up or down.

To mute the microphone during a call

- 1 Press and hold down **(☎)**.
- 2 Press and hold down **(☎)** again to resume.

To turn on the loudspeaker during a call

- Press **SpkrOn**.

⚠ Do not hold your phone to your ear when using the loudspeaker. This could damage your hearing.

**Emergency calls**

Your phone supports international emergency numbers, for example, 112 or 911. You can normally use these numbers to make emergency calls in any country, with or without the SIM card inserted, if you are within range of a network.

⚠ In some countries, other emergency numbers may also be promoted. Your network operator may therefore have saved additional local emergency numbers on the SIM card.

To make an emergency call

- Enter 112 (the international emergency number) and press **(☎)**.

To view your local emergency numbers

- 1 Select **Menu** > **Contacts**.
- 2 Scroll to **New contact** and select **Options** > **Special numbers** > **Emergency nos.**

Call list

You can view information about recent calls.

To call a number from the call list

- 1 Press **(☎)** and scroll to a tab.
- 2 Scroll to a name or a number and press **(☎)**.

Contacts

You can save names, phone numbers and personal information in **Contacts**. Information can be saved in the phone memory or on the SIM card.

⚡ You can synchronise your contacts using the Sony Ericsson PC Suite.

To add a phone contact

- 1 Select **Menu** > **Contacts**.
- 2 Scroll to **New contact** and select **Add**.
- 3 Enter the name and select **OK**.
- 4 Scroll to **New number**; and select **Add**.
- 5 Enter the number and select **OK**.
- 6 Select a number option.
- 7 Scroll between the tabs and add information to the fields.
- 8 Select **Save**.

⚡ If you send a message to a group, you will be charged for each member.

Calling contacts

To call with Smart search

- 1 Press **(☎)** - **(☎)** to enter a sequence of (at least two) digits. All entries which match the sequence of digits or corresponding letters are shown in a list.
- 2 Scroll to a contact or a phone number and press **(☎)**.

To turn on or off Smart search

- 1 Select **Menu** > **Settings** > **Calls** > **Smart search**.
- 2 Select an option.

## Messaging

Text and picture messages

Messages can contain text, pictures, sound effects, animations, and melodies. You can also create and use templates for your messages. When sending messages, the phone automatically selects the most suitable method (as a text or picture message) for sending the message.

If you cannot use picture messages, see *I cannot use Internet-based services* on page 32.

To create and send a message

- 1 Select **Menu** > **Messaging** > **Write new** > **Message**.
- 2 Enter text. To add items to the message, press **(☰)**, scroll **(☞)** and select an item.
- 3 Select **Continue** > **Contacts look-up**.
- 4 Select a recipient and select **Send**.

⚡ If you send a message to a group, you will be charged for each member.

To view a message from the inbox

- 1 Select **Menu** > **Messaging** > **Inbox**.
- 2 Scroll to the message and select **View**.

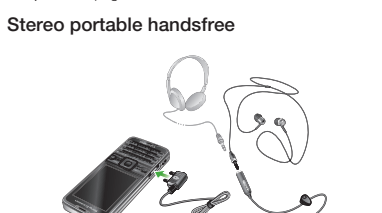
To call a number in a message

- When you view the message, scroll to the phone number and press **(☎)**.

## Music

You can listen to music, audio books and podcasts. Use **Media Go™** to transfer content to and from your phone. For more information, see *Transferring content to and from a computer* on page 21.

Stereo portable handsfree



Music player

To play music

- 1 Select **Menu** > **Media** > **Music**.

