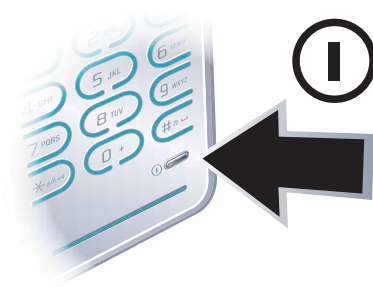



Draft for Sony Ericsson Internal Use Only

Turning on the phone

To turn on the phone




- 1 Press and hold down **Ⓜ**.
- 2 Enter your SIM card PIN, if requested and select **OK**.
- 3 Select a language.
- 4 Select **Yes** to use the setup wizard while settings are downloaded.

 If you want to correct a mistake when you enter your PIN, press **Ⓞ**.


SIM card

The SIM (Subscriber Identity Module) card, which you get from your network operator, contains information about your subscription. Always turn off your phone and detach the charger before you insert or remove the SIM card.

 You can save contacts on the SIM card before you remove it from your phone. See *To copy names and numbers to the SIM card* on page 19.

PIN

You may need a PIN (Personal Identification Number) to activate the services in your phone. Your PIN is supplied by your network operator. Each PIN digit appears as *, unless it starts with emergency number digits, for example, 112 or 911. You can see and call an emergency number without entering a PIN.

 If you enter the wrong PIN three times in a row, the SIM card is blocked. See *SIM card lock* on page 64.

Startup screen

The startup screen appears when you turn your phone on. See *Using pictures* on page 39.

Draft for Sony Ericsson Internal Use Only

Standby

After you have turned your phone on and entered your PIN, the name of the network operator appears. This view is called standby.

Help in your phone

Help and information are available in your phone. See *Navigation* on page 12.

To use the setup wizard

- 1 From standby select **Menu** > **Settings** > the **General** tab > **Setup wizard**.
- 2 Select an option.

To view information about functions

- Scroll to a function and select **Info**, if available. In some cases, **Info** appears under **Options**.

To view the phone demonstration

- From standby select **Menu** > **Entertainment** > **Demo tour**.

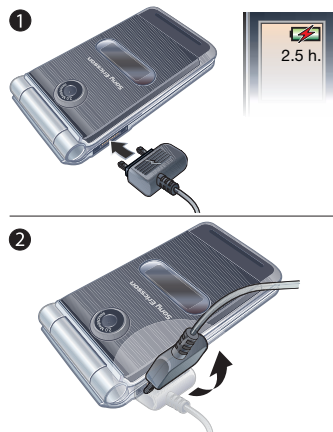
To view status information

- From standby press the volume key.


Charging the battery

The phone battery is partly charged when you buy it.

To charge the battery



- 1 Connect the charger to the phone. It takes approximately 2.5 hours to fully charge the battery. Press a key to view the screen.
- 2 Remove the charger by tilting the plug upwards.

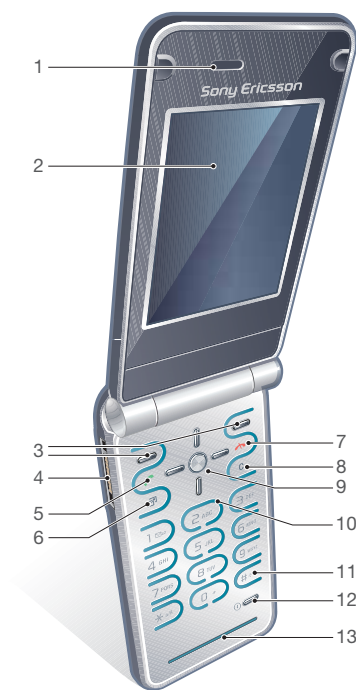
 You can use your phone while it is charging. You can charge the battery at any time and for more or less than 2.5 hours. You can interrupt the charging without damaging the battery.

Draft for Sony Ericsson Internal Use Only

Phone overview

- 1 Ear speaker
- 2 Screen
- 3 Selection keys
- 4 Connector for charger, handsfree and USB cable
- 5 Call key
- 6 Activity menu key
- 7 End key
- 8 C key (Clear)
- 9 Navigation key
- 10 Keypad rubber
- 11 Silent key
- 12 On/off key
- 13 Microphone mesh

! See *Internet keypad shortcuts* on page 50



Draft for Sony Ericsson Internal Use Only

- 14 Strap holder
- 15 Memory card slot
- 16 Volume keys
- 17 Speaker mesh
- 18 External display
- 19 Camera lens



Draft for Sony Ericsson Internal Use Only
Menu overview



PlayNow™*



Internet*



Entertainment

- Online services*
- Games
- TrackID™
- Location services
- VideoDJ™
- PhotoDJ™
- MusicDJ™
- Remote control
- Record sound
- Demo tour



Camera



Messaging

- Write new
- Inbox
- Email
- Web feeds
- Drafts
- Outbox
- Sent messages
- Saved messages
- My friends*
- Call voicemail
- Templates
- Manage messages
- Settings



Media



Alarms



Contacts

- Myself
- New contact



Radio

Draft for Sony Ericsson Internal Use Only



Calls**



All



Answered



Dialled



Missed



Organizer

File manager**
Applications
Calendar
Tasks
Notes
Synchronization
Timer
Stopwatch
Calculator
Code memo



Settings**



General
Profiles
Time & date
Language
Update service
Voice control
New events
Shortcuts
Flight mode
Security
Setup wizard
Accessibility*
Phone status
Master reset



Sounds & alerts
Ring volume
Ringtone
Silent mode
Increasing ring
Vibrating alert
Message alert
Key sound



Display
Wallpaper
Themes
Startup screen
Screen saver
Clock size
Brightness
Edit line names*



Calls
Speed dial
Smart search
Divert calls
Switch to line 2*
Manage calls
Time & cost*
Show/hide my no.
Handsfree
Open to answer



Connectivity
Bluetooth
USB
Phone name
Network sharing
Synchronization
Device management
Mobile networks
Internet settings
Streaming settings
Message settings*
Accessories

* Some menus are operator-, network- and subscription-dependent.

** You can use the navigation key to scroll between tabs in submenus. For more information, see Navigation on page 12.