

Annex 3 Photo documentation

Photo 1: Measurement System DASY 4



Photo 2: DUT - front view



Photo 3: DUT - side view



Photo 4: DUT - rear view



Photo 5: DUT - rear view (open)



Photo 6: DUT - rear view (open) without battery



Photo 7: The battery



Photo 8: Test position left hand touched

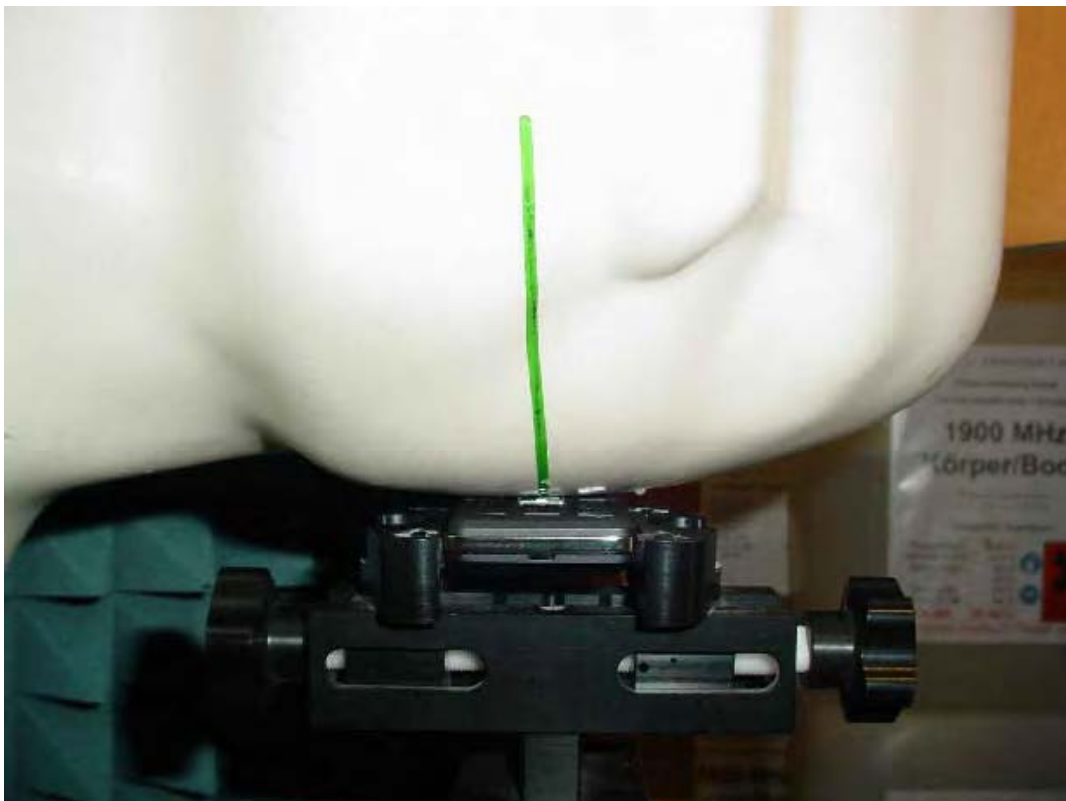


Photo 9: Test position left hand touched



Photo 10: Test position left hand touched



Photo 11: Test position left hand tilted 15°



Photo 12: Test position left hand tilted 15°



Photo 13: Test position right hand touched

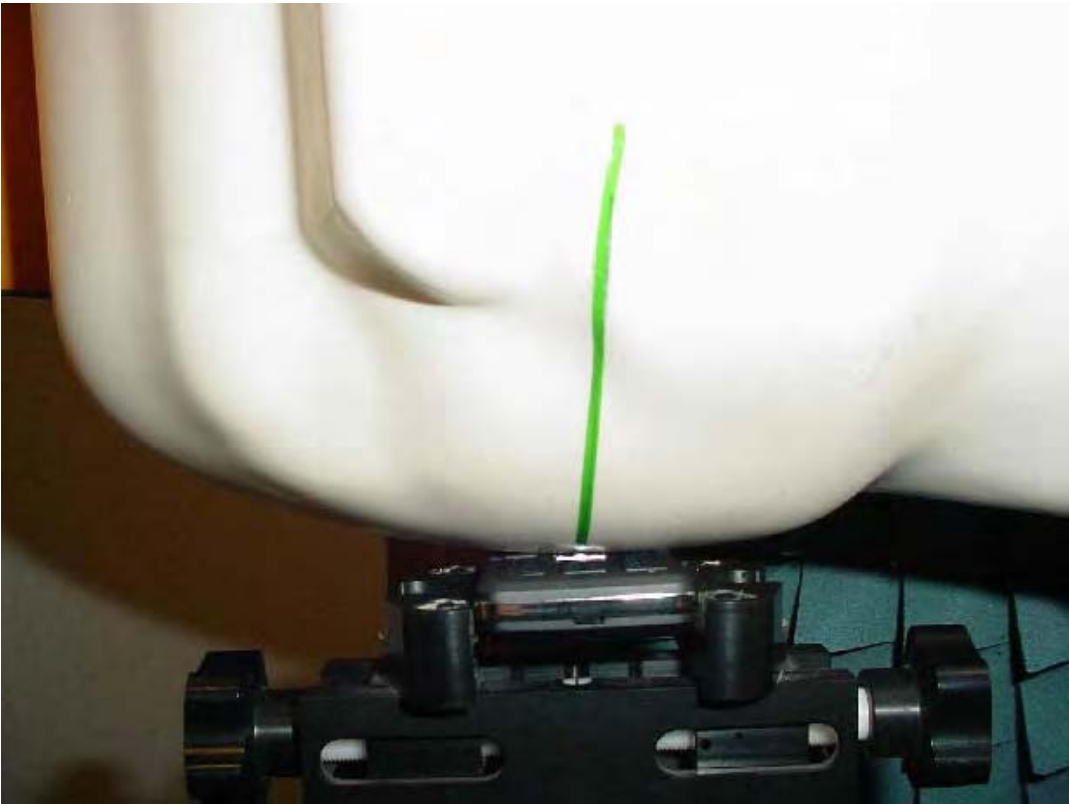


Photo 14: Test position right hand touched



Photo 15: Test position right hand touched



Photo 16: Test position right hand tilted 15°

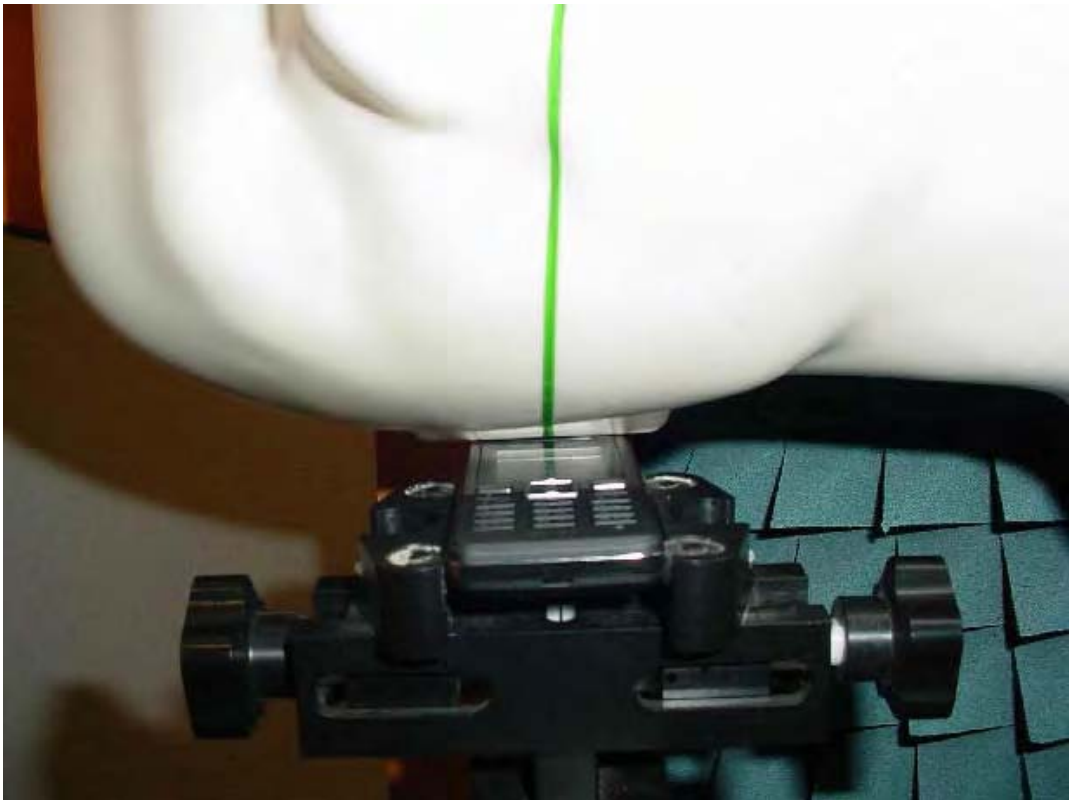


Photo 17: Test position right hand tilted 15°



Photo 18: Test position body worn front side (15 mm distance)

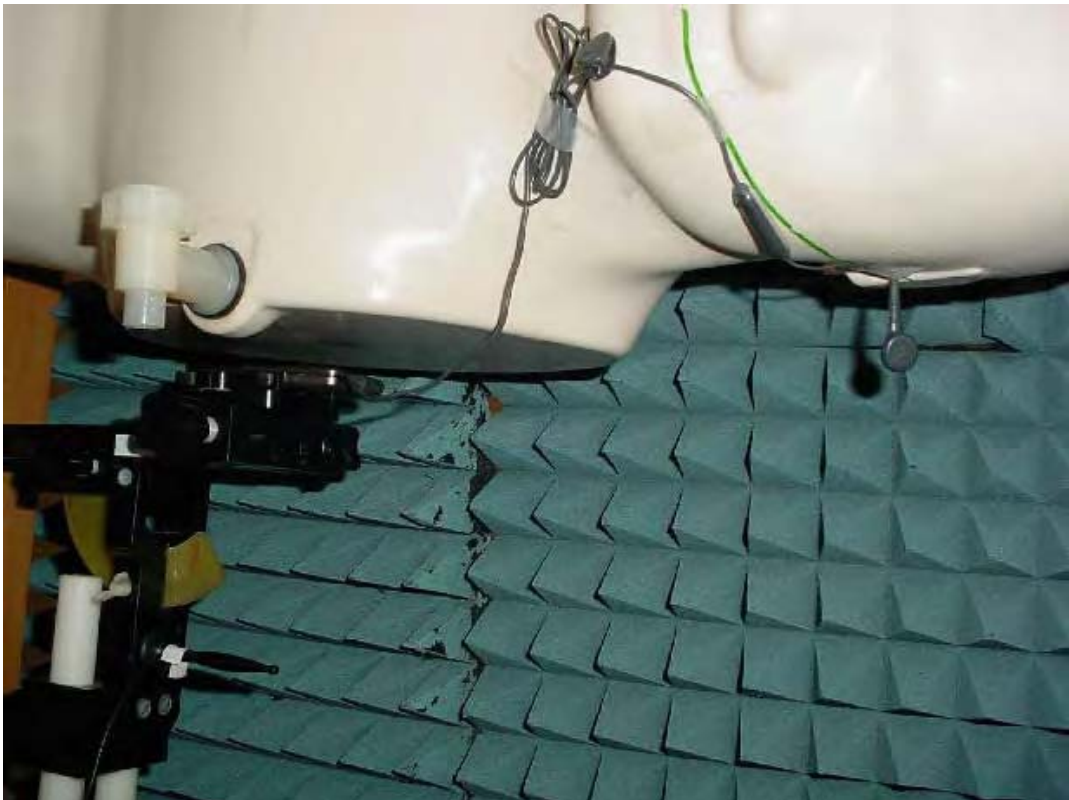


Photo 19: Test position body worn front side (15 mm distance)



Photo 20: Test position body worn rear side (15 mm distance)



Photo 21: Test position body worn rear side (15 mm distance)



Annex 3.1 Liquid depth

Photo 22: Liquid depth 850 MHz head simulating liquid

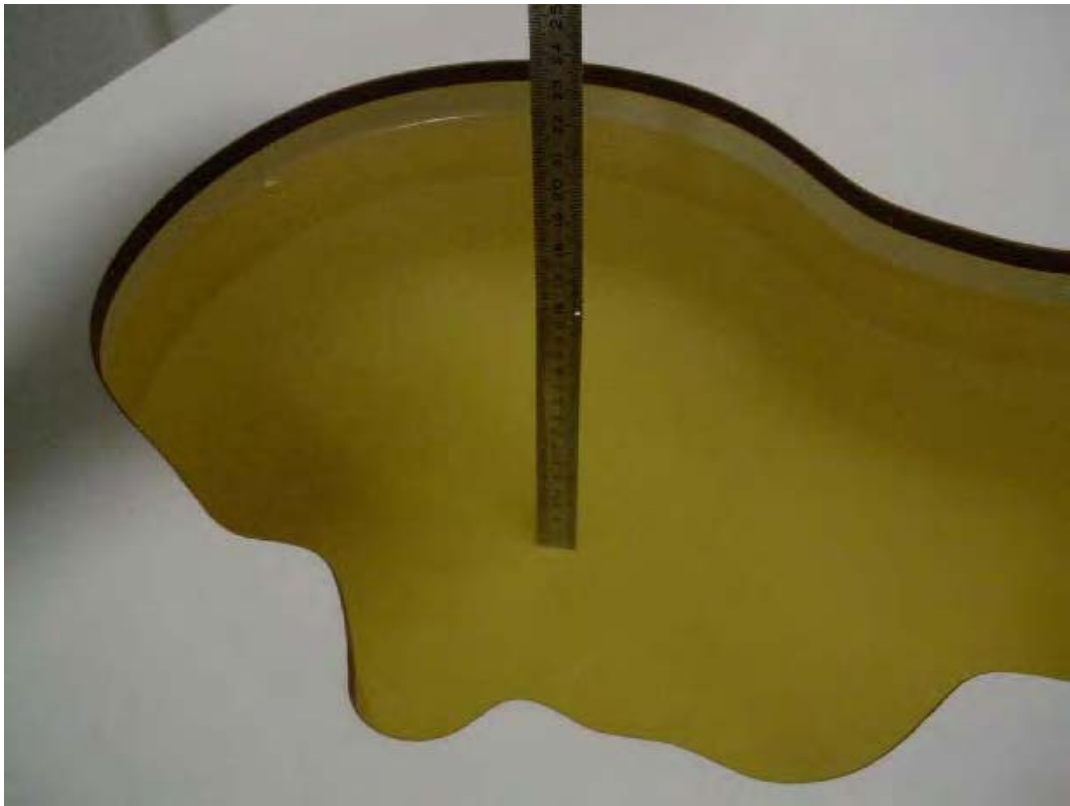


Photo 23: Liquid depth 850 MHz body simulating liquid



Photo 24: Liquid depth 1900 MHz head simulating liquid



Photo 25: Liquid depth 1900 MHz body simulating liquid



Annex 4 Calibration parameters

Calibration parameters are described in the additional document :

**Appendix to test report no. 2-4576-46-02/07‘
Calibration data, Phantom certificate
and detail information of the DASY4 System**