

Thank you for purchasing a Sony Ericsson C902c  
Cyber-shot™. For additional phone content, go to  
[www.sonyericsson.com/fun](http://www.sonyericsson.com/fun).

Register now to get a suite of tools, free online storage,  
special offers, news and competitions at  
[www.sonyericsson.com/myphone](http://www.sonyericsson.com/myphone).

For product support, go to [www.sonyericsson.com/cn](http://www.sonyericsson.com/cn).

## Accessories – More for your phone

### Bluetooth™ Headset HBH-PV712

A powerful wireless handsfree with extra Style-up™ cover in lime green – choose colour to match your mood!



### GPS-Enabler HGE-100

Get more from your phone – add GPS technology. Know where you are, where you're going and how to get there.



### Design Collection IDC-23

Black leather with a vibrant purple lining, this phone case has a separate credit card compartment, matching hand strap and detachable jewellery.



These accessories can be purchased separately but may not be available in every market. To view the full range go to [www.sonyericsson.com/accessories](http://www.sonyericsson.com/accessories).



## Contents



### Getting started ..... 6

Assembly .....	6
Turning on the phone .....	7
Help .....	8
Charge the battery .....	8
Phone overview .....	11
Menu overview .....	13
Navigation .....	15
Phone language .....	17
Entering text .....	17
Chinese input .....	18
Stroke input .....	19
Pinyin input .....	20

### Imaging ..... 22

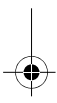
Camera and video recorder .....	22
Using the camera .....	22
Camera icons and settings .....	23
Getting more from the camera .....	24
Transferring pictures .....	25
Camera printing .....	25
Pictures .....	26
PhotoDJ™ and VideoDJ™ .....	27

### Calling ..... 28

Making and receiving calls .....	28
Contacts .....	29
Call list .....	33
Speed dial .....	33
Voicemail .....	34
Voice control .....	34
More than one call .....	36
Restricted dialling .....	37
Call time and cost .....	38
Showing or hiding your phone number .....	38

### Messaging ..... 38

Text messages .....	39
Picture messages .....	39
Message options .....	40
Voice messages .....	41
Email .....	41
My friends .....	43
Area and cell information .....	44





**Media player and music.... 45**

- Transferring content to and from a computer ..... 45
- Stereo portable handsfree ..... 46
- Music player ..... 46
- PlayNow™ ..... 47
- TrackID™ ..... 48
- Online music and video clips ..... 48

**Entertainment ..... 49**

- Video player ..... 49
- Radio ..... 49
- Ringtones and melodies ..... 49
- MusicDJ™ ..... 50
- Sound recorder ..... 50
- Games ..... 50
- Applications ..... 51

**Internet..... 52**

- Internet security and certificates .... 53
- Web feeds ..... 53

**Connectivity..... 55**

- Settings ..... 55
- Phone name ..... 55
- Bluetooth™ wireless technology ... 56
- Using the USB cable ..... 57
- Synchronizing ..... 58
- Update service ..... 60

**More features..... 62**

- Flight mode ..... 62
- Location services ..... 62
- File manager ..... 63
- Alarms ..... 63
- Calendar ..... 64
- Notes ..... 65
- Tasks ..... 66
- Profiles ..... 66
- Time and date ..... 67
- Theme ..... 67
- Main menu layout ..... 67
- Locks ..... 67

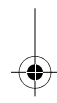
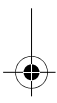
**Troubleshooting..... 69**

- Common questions ..... 69
- Error messages ..... 71

**Important information..... 73**

- Guidelines for Safe and Efficient Use ..... 73
- Memory card ..... 76
- End User Licence Agreement ..... 77
- Limited Warranty ..... 77
- FCC Statement ..... 79
- Declaration of Conformity for C902c ..... 80

**Index ..... 81**



### Sony Ericsson C902c Cyber-shot™

GSM EDGE 850/900/1800/1900

This User guide is published by Sony Ericsson Mobile Communications AB or its local affiliated company, without any warranty. Improvements and changes to this User guide necessitated by typographical errors, inaccuracies of current information, or improvements to programs and/or equipment, may be made by Sony Ericsson Mobile Communications AB at any time and without notice. Such changes will, however, be incorporated into new editions of this User guide.

All rights reserved.

©Sony Ericsson Mobile Communications AB, 2008

Publication number: 1210-4097.1

Please note:

Some of the services in this User guide are not supported by all networks. *This also applies to the GSM International Emergency Number 112.*

Please contact your network operator or service provider if you are in doubt whether you can use a particular service or not.

Please read the *Important information* before you use your mobile phone.

Your mobile phone has the capability to download, store and forward additional content, e.g. ringtones. The use of such content may be restricted or prohibited by rights of third parties, including but not limited to restriction under applicable copyright laws. You, and not Sony Ericsson, are entirely responsible for additional content that you download to or forward from your mobile phone. Prior to your use of any additional content, please verify that your intended use is properly licensed or is otherwise authorized. Sony Ericsson does not guarantee the accuracy, integrity or quality of any additional content or any other third party content. Under no circumstances will Sony Ericsson be liable in any way for your improper use of additional content or other third party content.

Smart-Fit Rendering is a trademark or a registered trademark of ACCESS Co., Ltd.

Bluetooth is a trademark or a registered trademark of Bluetooth SIG Inc. and any use of such mark by Sony Ericsson is under license.

The Liquid Identity logo, BestPic, PlayNow, MusicDJ, PhotoDJ, TrackID and VideoDJ are trademarks or registered trademarks of Sony Ericsson Mobile Communications AB.

TrackID™ is powered by Gracenote Mobile MusicID™. Gracenote and Gracenote Mobile MusicID are trademarks or registered trademarks of Gracenote, Inc.

Lotus Notes is a trademark or a registered trademark of International Business Machines Corporation.

Sony, Cyber-shot, Memory Stick Micro™ and M2™ are trademarks or registered trademarks of Sony Corporation.

Google™ and Google Maps™ are trademarks or registered trademarks of Google, Inc.

SyncML is a trademark or registered trademark of Open Mobile Alliance LTD.

Ericsson is a trademark or registered trademark of Telefonaktiebolaget LM Ericsson.

Adobe Photoshop Album Starter Edition is a trademark or registered trademark of Adobe Systems Incorporated in the United States and/or other countries/regions.

Microsoft, ActiveSync, Windows, Outlook, and Vista are registered trademarks or trademarks of Microsoft Corporation in the United States and/or other countries/regions.

T9™ Text Input is a trademark or a registered trademark of Tegic Communications. T9™ Text Input is licensed under one or more of the following: U.S. Pat. Nos. 5,818,437, 5,953,541, 5,187,480, 5,945,928, and 6,011,554; Canadian Pat. No. 1,331,057, United Kingdom Pat. No. 2238414B; Hong Kong Standard Pat. No. HK0940329; Republic of Singapore Pat. No. 51383; Euro.Pat. No. 0 842 463(96927260.8) DE/DK, FI, FR, IT, NL, PT, ES, SE, GB; and additional patents are pending worldwide.



Java and all Java based trademarks and logos are trademarks or registered trademarks of Sun Microsystems, Inc. in the U.S. and other countries/regions.

End-user license agreement for Sun™ Java™ J2ME™.

Restrictions: Software is confidential copyrighted information of Sun and title to all copies is retained by Sun and/or its licensors. Customer shall not modify, decompile, disassemble, decrypt, extract, or otherwise reverse engineer Software. Software may not be leased, assigned, or sublicensed, in whole or in part.

Export Regulations: This product, including any software or technical data contained in or accompanying the product, may be subject to U.S. export control laws, including the U.S. Export Administration Act and its associated regulations and the U.S. sanctions programs administered by the U.S. Treasury Department's Office of Foreign Assets Control, and may be additionally subject to export or import regulations in other countries. The user and any possessor of the product agrees to comply strictly with all such regulations and acknowledges that it is their responsibility to obtain any required licenses to export, re-export, or import this product. Without limitation this product, including any software contained therein, may not be downloaded, or otherwise exported or re-exported (i) into, or to a national or resident of, or an entity in, Cuba, Iraq, Iran, North Korea, Sudan, Syria (as such listing may be revised from time to time) or any country to which the U.S. has embargoed goods; or (ii) to any person or entity on the U.S. Treasury Department's list of Specially Designated Nationals or (iii) any person or entity on any other export prohibition list that may be maintained from time to time by the United States Government, including but not limited to the U.S. Commerce Department's Denied Persons List or Entity List, or the U.S. State Department's Nonproliferation Sanctions List.

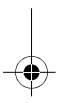
Restricted Rights: Use, duplication or disclosure by the United States government is subject to the restrictions as set forth in the Rights in Technical Data and Computer Software Clauses in DFARS 252.227-7013(c) (1) (ii) and FAR 52.227-19(c) (2) as applicable.

This product is protected by certain intellectual property rights of Microsoft. Use or distribution of such technology outside of this product is prohibited without a license from Microsoft.

Content owners use Windows Media digital rights management technology (WMDRM) to protect their intellectual property, including copyrights. This device uses WMDRM software to access WMDRM protected content. If the WMDRM software fails to protect the content, content owners may ask Microsoft to revoke the software's ability to use WMDRM to play or copy protected content.

Revocation does not affect unprotected content. When you download licenses for protected content, you agree that Microsoft may include a revocation list with the licenses. Content owners may require you to upgrade WMDRM to access their content. If you decline an upgrade, you will not be able to access content that requires the upgrade.

With respect to a Licensee offering MPEG-4 Video Decoders and/or Encoders the following notice shall be given: This product is licensed under the MPEG-4 visual patent portfolio license for the personal and non-commercial use of a consumer for (i) encoding video in compliance with the MPEG-4 visual standard ("MPEG-4 video") and/or (ii) decoding MPEG-4 video that was encoded by a consumer engaged in a personal and noncommercial activity and/or was obtained from a video provider licensed by MPEG LA to provide MPEG-4 video. No license is granted or shall be implied for any other use. Additional information including that relating to promotional, internal and commercial uses and licensing may be obtained from MPEG LA, LLC. See <http://www.mpegla.com>.





Notice Required for the License Granted under Articles 2.1 and 2.6. As a condition to the licenses granted pursuant to Articles 2.1 and 2.6 hereof, Licensee agrees to provide to any party that receives from Licensee an AVC Royalty Product the following notice: This product is licensed under the AVC patent portfolio license for the personal and non-commercial use of a consumer to (i) encode video in compliance with the AVC standard ("AVC video") and/or (ii) decode AVC video that was encoded by a consumer engaged in a personal and non-commercial activity and/or was obtained from a video provider licensed to provide AVC video. No license is granted or shall be implied for any other use. Additional information may be obtained from MPEG LA, L.L.C. See <http://www.mpegla.com>.

MPEG Layer-3 audio decoding technology licensed from Fraunhofer IIS and Thomson.

Other product and company names mentioned herein may be the trademarks of their respective owners.

**Note:** Sony Ericsson advises users to backup their personal data information.

Any rights not expressly granted herein are reserved. All illustrations are for illustration only and may not accurately depict the actual phone.

Some products may display a 17-digit number when you press \*#06#. The first 15 digits are the IMEI number, and the last 2 digits are software update number.





### Instruction symbols

These symbols may appear in the User guide.

 Note

 Tip

 Warning

 A service or function is network- or subscription-dependent. Contact your network operator for details.

> Use a selection or navigation key to scroll and select. See *Navigation* on page 15.

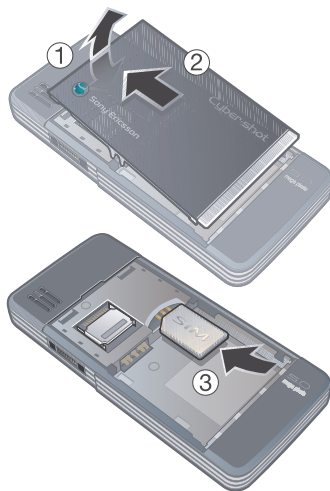


## Getting started

### Assembly

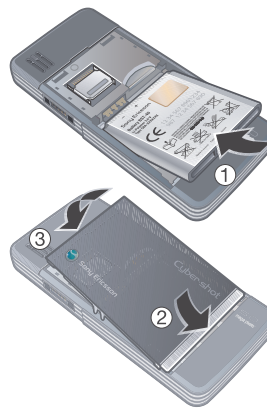
Before you start using your phone, you need to insert a SIM card and the battery.

#### To insert the SIM card



- 1 Lift the battery cover slightly.
- 2 Slide the battery cover off.
- 3 Slide the SIM card into its holder with the gold-coloured contacts facing down.

#### To insert the battery



- 1 Insert the battery with the label side up and the connectors facing each other.
- 2 Align the silvery edge of the battery cover properly.
- 3 Gently press battery cover into place.



## Turning on the phone

To turn on the phone



- 1 Press and hold down ①.
- 2 Enter your SIM card PIN, if requested and select **OK**.
- 3 Select a language.
- 4 Select **Yes** to use the setup wizard.

💡 If you want to correct a mistake when you enter your PIN, press **C**.

! Before turning the phone off, you must return to standby.

### SIM card

The SIM (Subscriber Identity Module) card, which you get from your network operator, contains information about your subscription. Always turn off your phone and detach the charger before you insert or remove the SIM card.

💡 You can save contacts on the SIM card before you remove it from your phone. See *To copy names and numbers to the SIM card* on page 31.

### PIN

You may need a PIN (Personal Identification Number) to activate the services in your phone. Your PIN is supplied by your network operator. Each PIN digit appears as \*, unless it starts with emergency number digits, for example, 112 or 911. You can see and call an emergency number without entering a PIN.

! If you enter the wrong PIN three times in a row, the SIM card is blocked. See *SIM card lock* on page 67.

### Startup screen

The startup screen appears when you turn your phone on. See *Using pictures* on page 27.

### Standby

After you have turned your phone on and entered your PIN, the name of the network operator appears. This view is called standby.

## Help

In addition to this User guide, Getting started guides and more information are available at [www.sonyericsson.com/cn](http://www.sonyericsson.com/cn).

### Help in your phone

Help and information are available in your phone. See *Navigation* on page 15.

### To view tips and tricks

- 1 From standby select **Menu** > **Settings** > the **General** tab > **Setup wizard**.
- 2 Select **Tips and tricks**.

### To view information about functions

- Scroll to a function and select **Info**, if available. In some cases, **Info** appears under **Options**.

### To view the phone demonstration

- From standby select **Menu** > **Entertainment** > **Demo tour**.

### To view status information

- From standby press the volume key up.

## Charge the battery

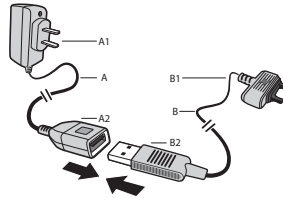
Your phone battery is partly charged when you buy it.

! It may take 30 minutes for the battery icon to appear on the screen.

### Non-USB Charger (old type)



### USB Charger (new type)



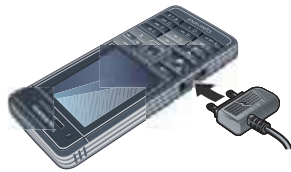
- A AC adapter
- A1 AC adapter connector
- A2 AC adapter USB socket
- B USB cable
- B1 USB cable connector
- B2 USB cable plug



### Using the USB charger

#### *To connect the charger and charge the battery*

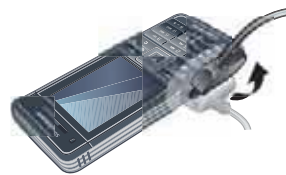
- 1 Connect the USB cable plug to the AC adapter USB socket, as shown in the above illustration. The USB cable is supplied with your phone.



- 2 Connect the USB cable connector to your phone. Press a key to view the charging status on the screen. It takes approximately 2.5 hours to fully charge the battery.



### To remove the charger



- 1 Charge your battery until the battery icon indicates a full charge.
- 2 Tilt the USB charger connector upwards to remove it.

#### **Note:**

- 1 The USB cable for the new USB charger shown in the illustration (Part. B in the new-type charger illustration) on page 8 **is only intended for charging your phone. Do not use it for transferring data.**
- 2 The USB cable for the USB charger shown in the illustration (Part. B in the new-type charger illustration) is only intended for connection to the AC adapter (Part. A in the new-type charger illustration) to charge your phone. **It must not be used for connection to a PC. It can only be used for charging your phone. Never use it for charging accessories.**





3 Sony Ericsson strongly recommends that you use **only Sony Ericsson branded original batteries, the part of power supply device in accordance with YD/T 1591-2006 specifications of Communications Industry Standards of P. R. China (Part A in the new-type charger illustration) and the USB cable supplied with your phone to charge the phone.** The use of third-party products may decrease the performance of your phone and/or pose a risk to your health or safety.

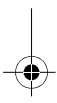


*You Can Use The Phone During Charging. You Can Charge The Battery For More Or Less Than 2.5 Hours. Interrupted Charging Will Not Damage The Battery.*



*Use only Sony Ericsson branded original batteries intended for use with your mobile phone. Using other batteries may not be able to charge.*

4 Sony Ericsson recommends that you **never mix the use the new USB charger and the old non-USB charger. The phone with new-type charger in box cannot be charged with the old-type charger, and vice versa.** The use of both the chargers may decrease the performance of your phone and/or pose a risk to your health or safety.



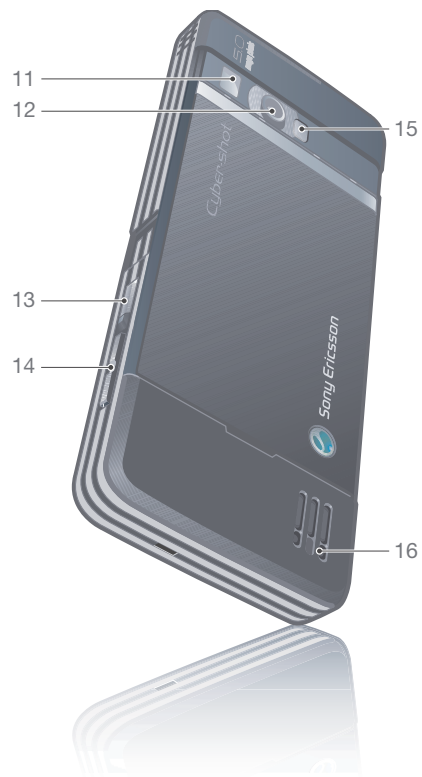
### Phone overview

- 1 Ear speaker
- 2 Screen
- 3 Selection keys
- 4 Call key
- 5 Activity menu key
- 6 Connector for charger, handsfree and USB cable
- 7 End, on/off key
- 8 C key (Clear)
- 9 Navigation key
- 10 Silent key





- 11 Flash/Light
- 12 Camera lens
- 13 Camera key
- 14 Volume, digital zoom keys
- 15 Self-portrait mirror
- 16 Strap holder





## Menu overview



**PlayNow™\***



**Monternet\***



**Entertainment**

- Online services\*
- TrackID™
- Location services
- Games
- VideoDJ™
- PhotoDJ™
- MusicDJ™
- Remote control
- Record sound
- Demo tour



**Cyber-shot™**



**Messaging**

- Write new
- Inbox
- Email
- Drafts
- Outbox
- Sent messages
- Saved messages
- My friends\*
- Call voicemail
- Templates
- Manage messages
- Settings



**Media**

- Photo
- Music
- Video
- Games
- Web feeds
- Settings



**Alarms**

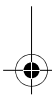


**Contacts**

- Myself
- New contact



**Radio**





**Calls\*\***

All

Answered

Dialled

Missed

**Organizer**

- File manager\*\*
- Applications
- Calendar
- Tasks
- Notes
- Synchronization
- Timer
- Stopwatch
- Calculator
- Code memo

**Settings\*\***

General

- Profiles
- Time & date
- Language
- Update service
- Voice control
- Shortcuts
- New events
- Security
- Setup wizard
- Accessibility\*
- Phone status
- Master reset

Sounds & alerts

- Ring volume
- Ringtone
- Silent mode
- Increasing ring
- Vibrating alert
- Message alert
- Key response

Display

- Wallpaper
- Main menu layout
- Theme
- Startup screen
- Screen saver
- Clock size
- Brightness
- Edit line names\*

Calls

- Speed dial
- Smart search
- Divert calls
- Switch to line 2\*
- Manage calls
- Time & cost\*
- Show/hide my no.
- Handsfree

Connectivity

- Bluetooth
- USB
- Phone name
- Network sharing
- Synchronization
- Device management
- Mobile networks
- Data communication\*
- Internet settings
- Streaming settings
- Message settings\*
- SIP settings
- Accessories

\* Some menus are operator-, network- and subscription-dependent.

\*\* You can use the navigation key to scroll between tabs in submenus. For more information, see Navigation on page 15.

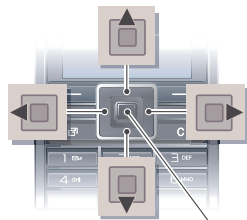




## Navigation

The main menus are shown as icons. Some submenus include tabs.

### To navigate the phone menus



Centre navigation key

- 1 From standby select **Menu**.
- 2 Use the navigation key to move through the menus.

### To select actions on the screen

- Press the left or right selection key, or the centre navigation key.

### To view options for an item

- Select **Options** to, for example, edit.

### To scroll between the tabs

- Scroll to a tab by pressing the navigation key left or right.

### To return to standby

- Press **End Call**.

### To end a function

- Press **End Call**.

### To navigate your media

- 1 From standby select **Menu** > **Media**.
- 2 Scroll to a menu item and press the navigation key right.
- 3 To go back, press the navigation key left.

### To delete items

- Press **Call** to delete items such as numbers, letters, pictures and sounds.

### To send items

- 1 Scroll to an item such as a contact, a picture or a sound.
- 2 Select **Options** > **Send**.
- 3 Select a transfer method.

- ! *Make sure the receiving device supports the transfer method you select.*

### Shortcuts

You can use keypad shortcuts to go directly to a menu. Menu numbering starts from the top left icon and moves across and then down row by row.



#### To go directly to a main menu

- From standby select **Menu** and press **1** - **9**, **\* (star)**, **0 +** or **# (hash)**.

- ! **The Main menu layout must be set to Grid.**  
See *To change the main menu layout on page 67.*

#### To use navigation key shortcuts

- From standby press **⏏**, **⏏**, **⏏** or **⏏** to go directly to a function.

#### To edit a navigation key shortcut

- 1 From standby select **Menu** > **Settings** > the **General** tab > **Shortcuts**.
- 2 Scroll to an option and select **Edit**.
- 3 Scroll to a menu option and select **Shortc.**

#### Activity menu

The activity menu gives you quick access to certain functions.

#### To open the activity menu

- Press **⏏**.

#### Activity menu tabs

- **New events** – missed calls and new messages.
- **Running apps** – applications that are running in the background.
- **My shortcuts** – add your favourite functions to access them quickly.
- **Monternet** – quick access to the Internet.

#### Memory card

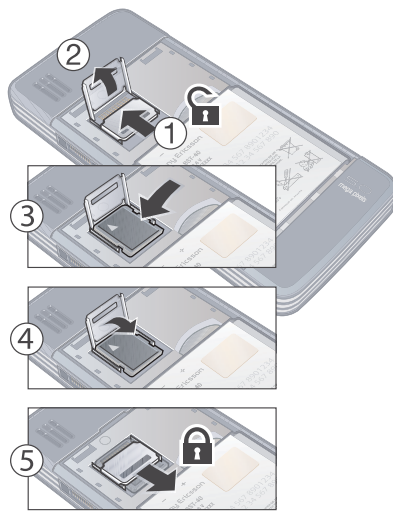
- ! **You may have to purchase a memory card separately.**

Your phone supports Memory Stick Micro™ (M2™) memory card adding more storage space to your phone. It can also be used as a portable memory card with other compatible devices.

You can use the file manager to move files between the memory card and the phone memory. See *To move a file in the file manager on page 63.*



### To insert a memory card



! Handle the memory card holder with care.

#### To view memory card options

- 1 From standby select **Menu** > **Organizer** > **File manager** > the **On memory card** tab.
- 2 Select **Options**.

### Phone language

You can select a language to use in your phone.

#### To change the phone language

- 1 From standby select **Menu** > **Settings** > the **General tab** > **Language** > **Phone language**.
- 2 Select an option.

### Entering text

You can use multitap text input or T9™ Text Input **T9** to enter text. The T9 Text Input method uses a built-in dictionary.

#### To change text input method

- When you enter text, press and hold down **\*sk->**.

#### To shift between capitals and lower-case letters

- When you enter text, press **\*sk->**.

#### To enter numbers

- When you enter text, press and hold down **0+** - **9**.

#### To enter full stops and commas

- When you enter text, press **1**.