

2023-01-04 System Performance Check Report D900V2 - SN1d180

Summary

Dipole	D900V2 - SN1d180		
Frequency [MHz]	900.0		
Phantom Section TSL	Flat HSL	Dev. Peak [%]	-1.8
Power [dBm]	17.0	Iso. Error [%]	-1.2

Exposure Conditions

Dipole Distance [mm]	15	TSL Permittivity	42.0
Conversion Factor	10.19	TSL Conductivity [S/m]	0.963

Hardware Setup

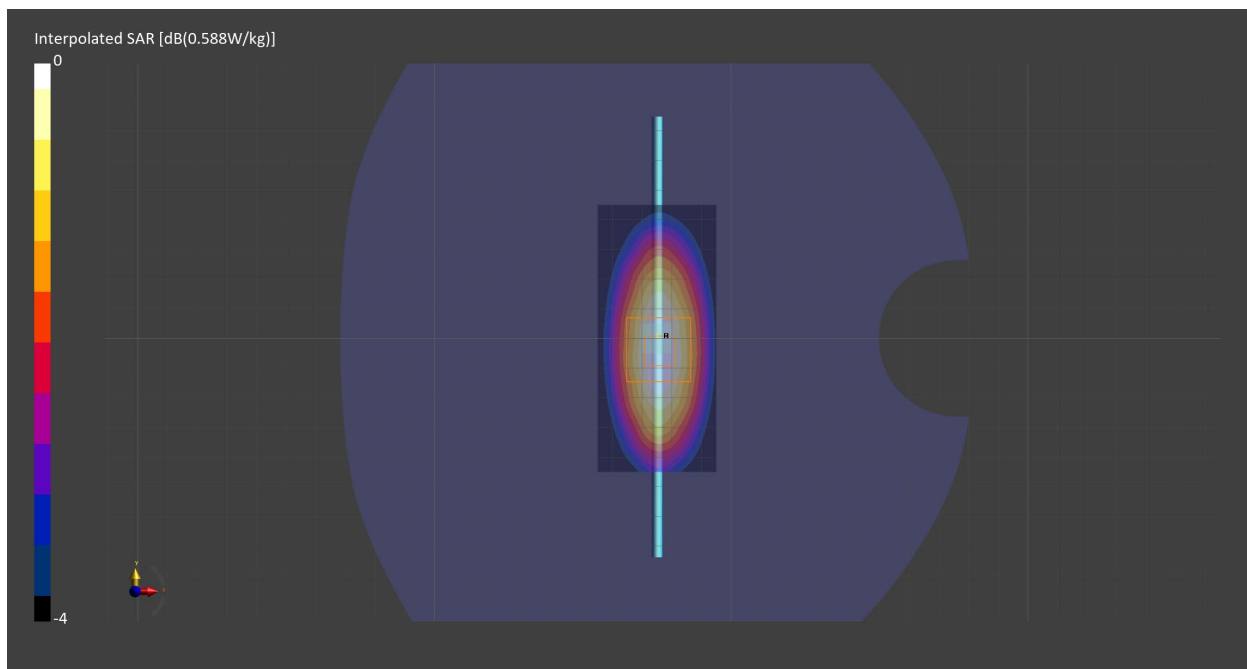
Probe Calibration Date	EX3DV4 - SN7587 2022-04-27	Phantom	Twin-SAM V8.0 (30deg probe tilt) - SN2084
DAE Calibration Date	DAE4 Sn1673 2022-09-15	TSL Meas. Date	HBBL600-10000V6 2023-Jan-04

Scans Setup

	Area Scan	Zoom Scan
Grid Extents [mm]	40.0 x 90.0	30.0 x 30.0 x 30.0
Grid Steps [mm]	10.0 x 15.0	6.0 x 6.0 x 1.5
Sensor Surface [mm]	3.0	1.4
Graded Grid	n/a	Yes
M2/M1 [%]		85.9
Dist 3dB Peak [mm]		18.4

Measurement Results

	Area Scan	Zoom Scan
psSAR1g [W/Kg]	0.508	0.510
psSAR10g [W/Kg]	0.331	0.328
Power Drift [dB]	-0.00	0.02



2023-02-06 System Performance Check Report D750V3 - SN1139

Summary

Dipole	D750V3 - SN1139		
Frequency [MHz]	750.0		
Phantom Section TSL	Flat HSL	Dev. Peak [%]	-0.3
Power [dBm]	17.0	Iso. Error [%]	0.8

Exposure Conditions

Dipole Distance [mm]	15	TSL Permittivity	40.5
Conversion Factor	10.33	TSL Conductivity [S/m]	0.921

Hardware Setup

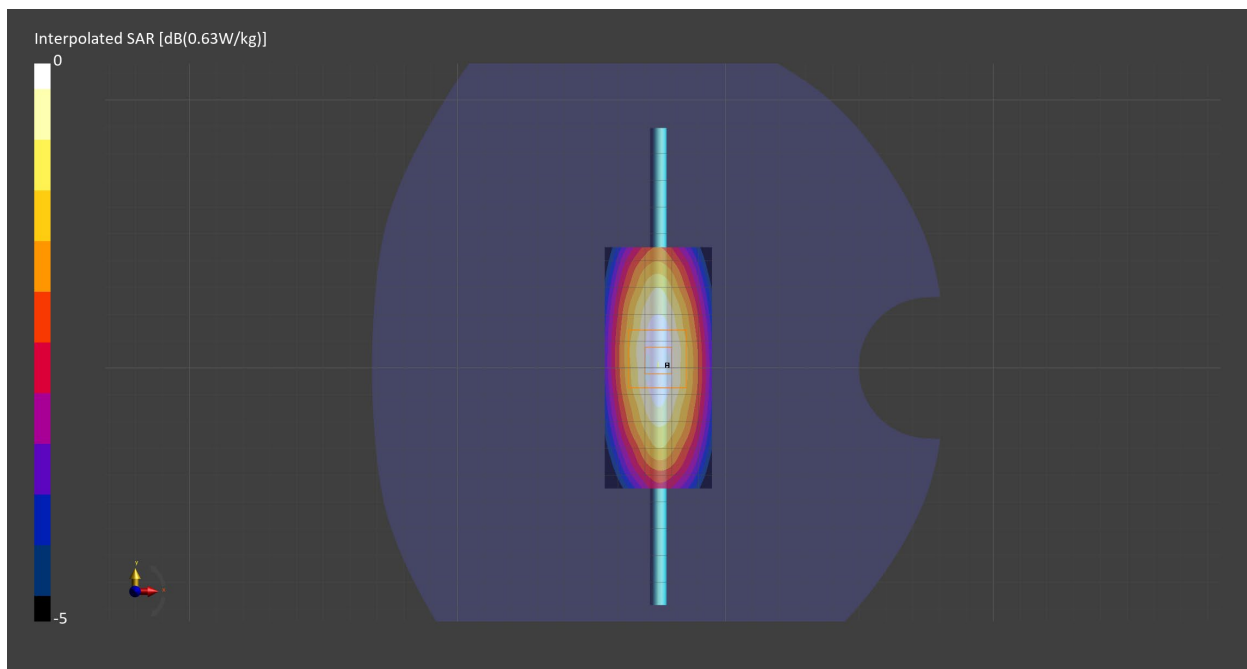
Probe Calibration Date	EX3DV4 - SN7711 2022-03-11	Phantom	Twin-SAM V8.0 (30deg probe tilt) - SN2084
DAE Calibration Date	DAE4 Sn1716 2022-03-08	TSL Meas. Date	HBBL600-10000V6 2023-Feb-06

Scans Setup

	Area Scan	Zoom Scan
Grid Extents [mm]	40.0 x 90.0	30.0 x 30.0 x 30.0
Grid Steps [mm]	10.0 x 15.0	6.0 x 6.0 x 1.5
Sensor Surface [mm]	3.0	1.4
Graded Grid	n/a	Yes
M2/M1 [%]		87.9
Dist 3dB Peak [mm]		> 15.0

Measurement Results

	Area Scan	Zoom Scan
psSAR1g [W/Kg]	0.418	0.415
psSAR10g [W/Kg]	0.278	0.273
Power Drift [dB]	-0.00	0.01



2023-02-06 System Performance Check Report D1750V2 - SN1136

Summary

Dipole	D1750V2 - SN1136		
Frequency [MHz]	1750.0		
Phantom Section TSL	Flat HSL	Dev. Peak [%]	2.2
Power [dBm]	17.0	Iso. Error [%]	-0.9

Exposure Conditions

Dipole Distance [mm]	10	TSL Permittivity	38.6
Conversion Factor	8.89	TSL Conductivity [S/m]	1.36

Hardware Setup

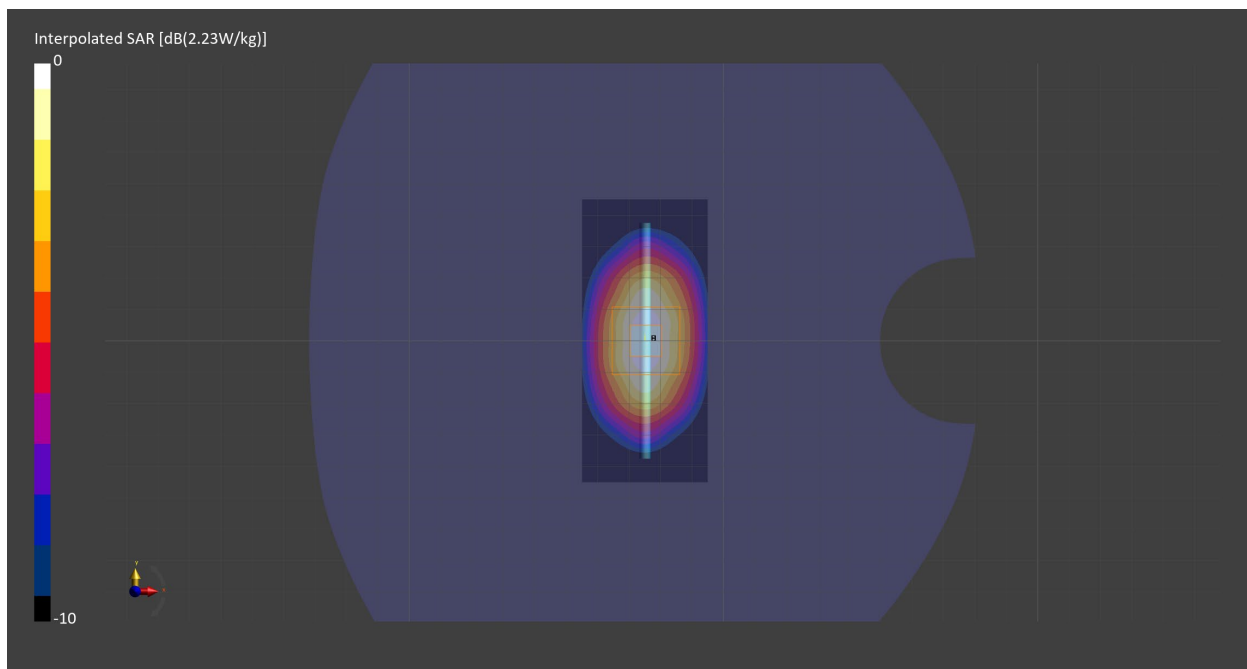
Probe Calibration Date	EX3DV4 - SN7711 2022-03-11	Phantom	Twin-SAM V8.0 (30deg probe tilt) - SN2084
DAE Calibration Date	DAE4 Sn1716 2022-03-08	TSL Meas. Date	HBBL600-10000V6 2023-Feb-06

Scans Setup

	Area Scan	Zoom Scan
Grid Extents [mm]	40.0 x 90.0	30.0 x 30.0 x 30.0
Grid Steps [mm]	10.0 x 15.0	6.0 x 6.0 x 1.5
Sensor Surface [mm]	3.0	1.4
Graded Grid	n/a	Yes
M2/M1 [%]		81.8
Dist 3dB Peak [mm]		10.8

Measurement Results

	Area Scan	Zoom Scan
psSAR1g [W/Kg]	1.79	1.77
psSAR10g [W/Kg]	0.953	0.939
Power Drift [dB]	0.00	-0.01



2023-02-07 System Performance Check Report CLA-13 - SN1017

Summary

Dipole	CLA-13 - SN1017		
Frequency [MHz]	13.0		
Phantom Section TSL	Flat HSL	Dev. Peak [%]	n/a
Power [dBm]	22.0	Iso. Error [%]	-4.4

Exposure Conditions

Dipole Distance [mm]	0	TSL Permittivity	54.1
Conversion Factor	17.65	TSL Conductivity [S/m]	0.724

Hardware Setup

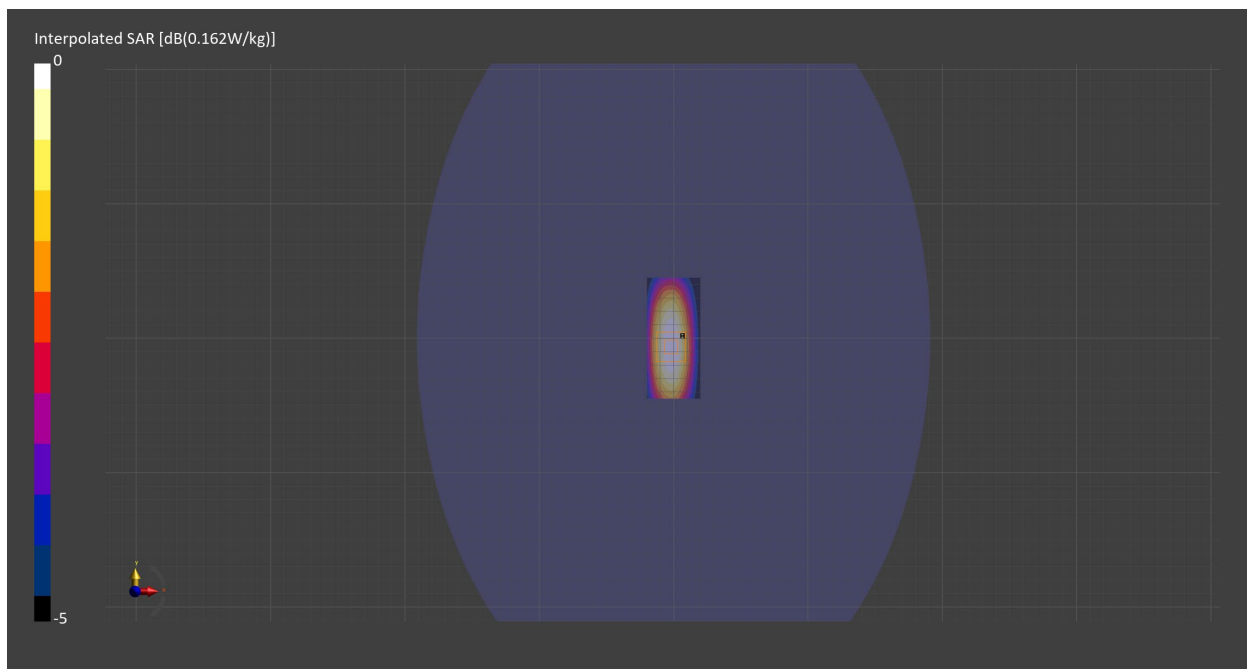
Probe Calibration Date	EX3DV4 - SN7709 2022-12-12	Phantom	ELI V8.0 (20deg probe tilt) - SN2081
DAE Calibration Date	DAE4 Sn1714 2022-11-23	TSL Meas. Date	HBBL4-250V3 2023-Feb-07

Scans Setup

	Area Scan	Zoom Scan
Grid Extents [mm]	40.0 x 90.0	30.0 x 30.0 x 30.0
Grid Steps [mm]	10.0 x 15.0	6.0 x 6.0 x 1.5
Sensor Surface [mm]	3.0	1.4
Graded Grid	n/a	Yes
M2/M1 [%]		74.9
Dist 3dB Peak [mm]		16.4

Measurement Results

	Area Scan	Zoom Scan
psSAR1g [W/Kg]	0.086	0.082
psSAR10g [W/Kg]	0.069	0.051
Power Drift [dB]	-0.01	0.01



2023-01-10 System Performance Check Report D900V2 - SN1d180

Summary

Dipole	D900V2 - SN1d180		
Frequency [MHz]	900.0		
Phantom Section TSL	Flat HSL	Dev. Peak [%]	-3.5
Power [dBm]	17.0	Iso. Error [%]	1.0

Exposure Conditions

Dipole Distance [mm]	15	TSL Permittivity	42.3
Conversion Factor	9.82	TSL Conductivity [S/m]	0.929

Hardware Setup

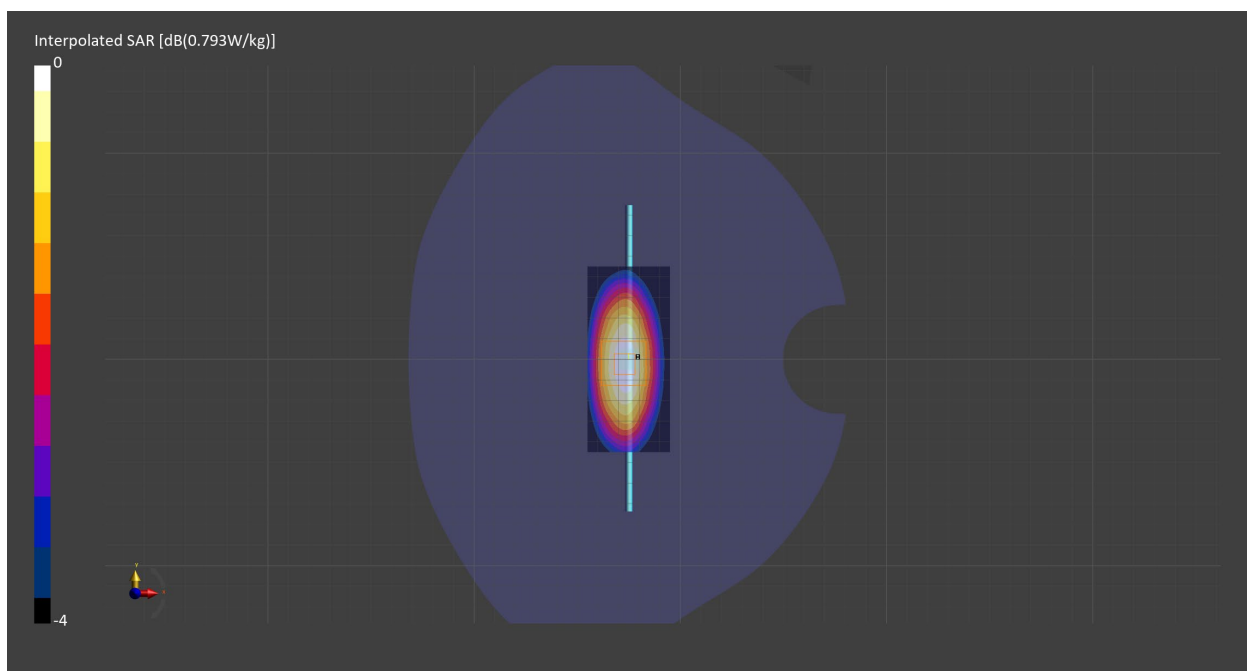
Probe Calibration Date	EX3DV4 - SN7711 2022-03-11	Phantom	Twin-SAM V8.0 (30deg probe tilt) - SN2082
DAE Calibration Date	DAE4 Sn1716 2022-03-08	TSL Meas. Date	HBBL600-10000V6 2023-Jan-10

Scans Setup

	Area Scan	Zoom Scan
Grid Extents [mm]	40.0 x 90.0	30.0 x 30.0 x 30.0
Grid Steps [mm]	10.0 x 15.0	6.0 x 6.0 x 1.5
Sensor Surface [mm]	3.0	1.4
Graded Grid	n/a	Yes
M2/M1 [%]		87.3
Dist 3dB Peak [mm]		20.4

Measurement Results

	Area Scan	Zoom Scan
psSAR1g [W/Kg]	0.515	0.515
psSAR10g [W/Kg]	0.338	0.334
Power Drift [dB]	0.00	0.02



2023-01-31 System Performance Check Report D1900V2 - SN5d202

Summary

Dipole	D1900V2 - SN5d202		
Frequency [MHz]	1900.0		
Phantom Section TSL	Flat HSL	Dev. Peak [%]	6.6
Power [dBm]	17.0	Iso. Error [%]	1.3

Exposure Conditions

Dipole Distance [mm]	10	TSL Permittivity	38.7
Conversion Factor	8.26	TSL Conductivity [S/m]	1.42

Hardware Setup

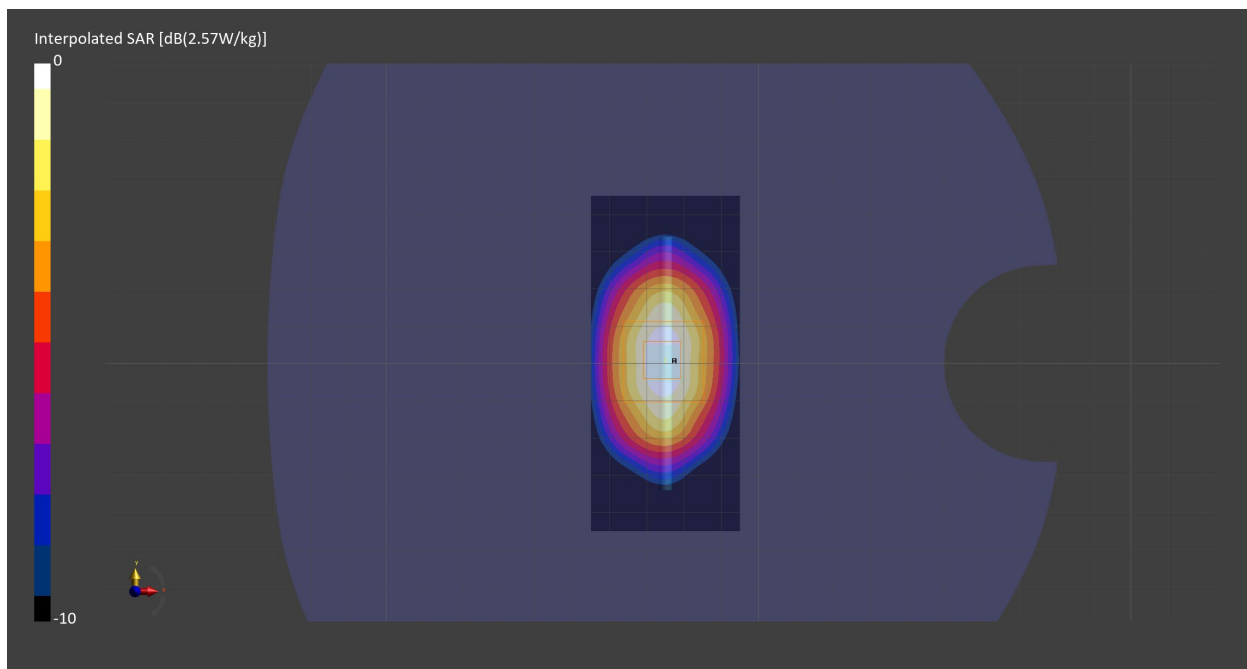
Probe Calibration Date	EX3DV4 - SN7587 2022-04-27	Phantom	Twin-SAM V8.0 (30deg probe tilt) - SN2082
DAE Calibration Date	DAE4 Sn1673 2022-09-15	TSL Meas. Date	HBBL600-10000V6 2023-Jan-31

Scans Setup

	Area Scan	Zoom Scan
Grid Extents [mm]	40.0 x 90.0	30.0 x 30.0 x 30.0
Grid Steps [mm]	10.0 x 15.0	6.0 x 6.0 x 1.5
Sensor Surface [mm]	3.0	1.4
Graded Grid	n/a	Yes
M2/M1 [%]		81.6
Dist 3dB Peak [mm]		10.9

Measurement Results

	Area Scan	Zoom Scan
psSAR1g [W/Kg]	2.04	2.02
psSAR10g [W/Kg]	1.06	1.05
Power Drift [dB]	0.00	0.01



2023-02-06 System Performance Check Report D5GHzV2 - SN1213

Summary

Dipole	D5GHzV2 - SN1213		
Frequency [MHz]	5250.0		
Phantom Section TSL	Flat HSL	Dev. Peak [%]	-7.7
Power [dBm]	17.0	Iso. Error [%]	1.6

Exposure Conditions

Dipole Distance [mm]	10	TSL Permittivity	35.8
Conversion Factor	5.28	TSL Conductivity [S/m]	4.65

Hardware Setup

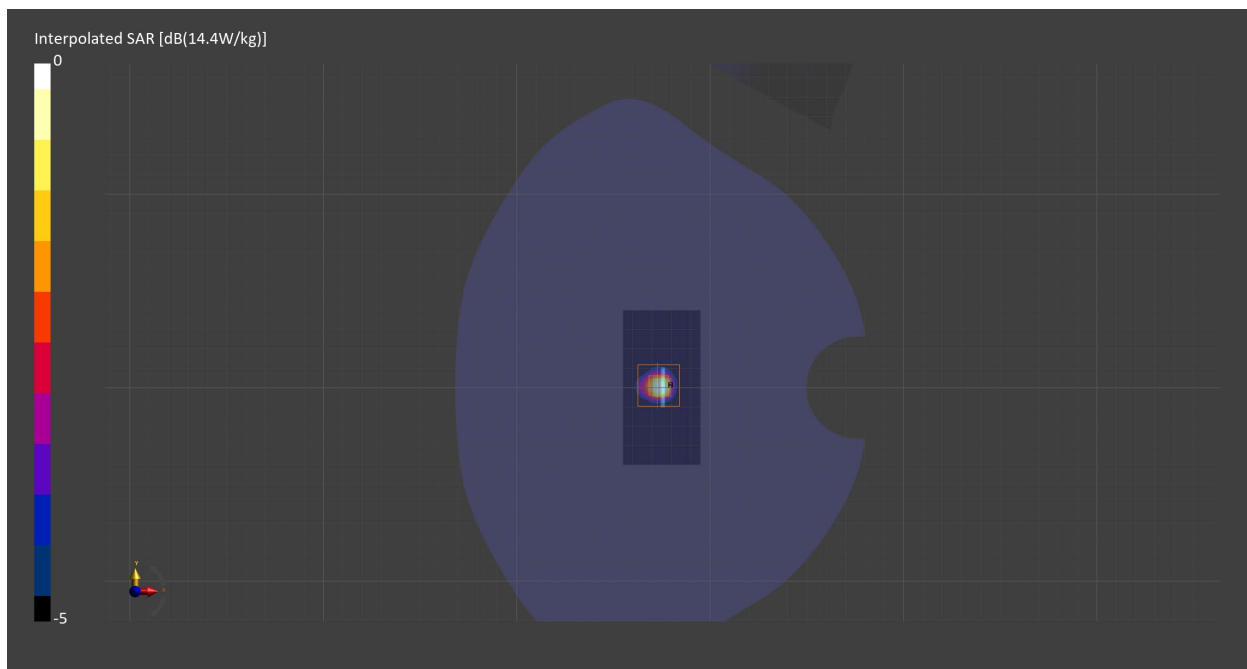
Probe Calibration Date	EX3DV4 - SN7587 2022-04-27	Phantom	Twin-SAM V8.0 (30deg probe tilt) - SN2082
DAE Calibration Date	DAE4 Sn1673 2022-09-15	TSL Meas. Date	HBBL600-10000V6 2023-Feb-06

Scans Setup

	Area Scan	Zoom Scan
Grid Extents [mm]	40.0 x 80.0	22.0 x 22.0 x 22.0
Grid Steps [mm]	10.0 x 10.0	4.0 x 4.0 x 1.4
Sensor Surface [mm]	3.0	1.4
Graded Grid	n/a	Yes
M2/M1 [%]		64.0
Dist 3dB Peak [mm]		7.4

Measurement Results

	Area Scan	Zoom Scan
psSAR1g [W/Kg]	3.49	3.66
psSAR10g [W/Kg]	1.02	1.05
Power Drift [dB]	-0.03	-0.06



2023-02-06 System Performance Check Report D5GHzV2 - SN1213

Summary

Dipole	D5GHzV2 - SN1213		
Frequency [MHz]	5600.0		
Phantom Section TSL	Flat HSL	Dev. Peak [%]	-1.1
Power [dBm]	17.0	Iso. Error [%]	-1.4

Exposure Conditions

Dipole Distance [mm]	10	TSL Permittivity	35.1
Conversion Factor	4.75	TSL Conductivity [S/m]	5.05

Hardware Setup

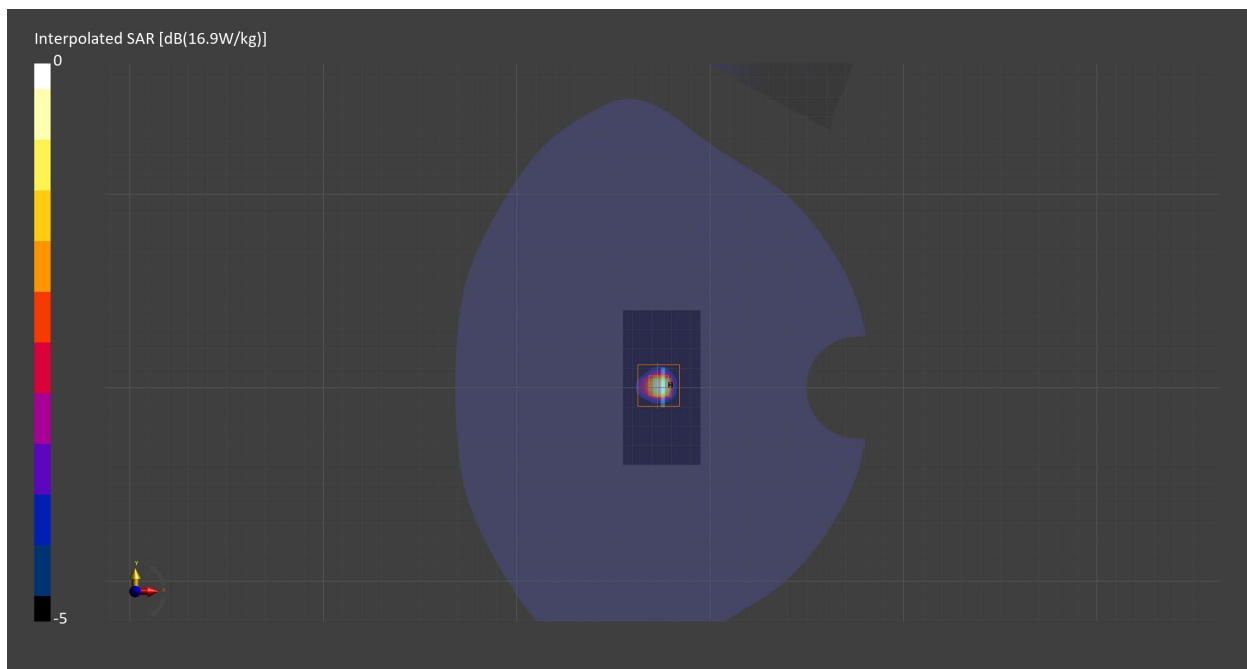
Probe Calibration Date	EX3DV4 - SN7587 2022-04-27	Phantom	Twin-SAM V8.0 (30deg probe tilt) - SN2082
DAE Calibration Date	DAE4 Sn1673 2022-09-15	TSL Meas. Date	HBBL600-10000V6 2023-Feb-06

Scans Setup

	Area Scan	Zoom Scan
Grid Extents [mm]	40.0 x 80.0	22.0 x 22.0 x 22.0
Grid Steps [mm]	10.0 x 10.0	4.0 x 4.0 x 1.4
Sensor Surface [mm]	3.0	1.4
Graded Grid	n/a	Yes
M2/M1 [%]		61.0
Dist 3dB Peak [mm]		7.4

Measurement Results

	Area Scan	Zoom Scan
psSAR1g [W/Kg]	3.76	3.96
psSAR10g [W/Kg]	1.07	1.11
Power Drift [dB]	-0.02	-0.02



2023-02-06 System Performance Check Report D5GHzV2 - SN1213

Summary

Dipole	D5GHzV2 - SN1213		
Frequency [MHz]	5750.0		
Phantom Section TSL	Flat HSL	Dev. Peak [%]	-6.6
Power [dBm]	17.0	Iso. Error [%]	-1.4

Exposure Conditions

Dipole Distance [mm]	10	TSL Permittivity	34.8
Conversion Factor	4.87	TSL Conductivity [S/m]	5.23

Hardware Setup

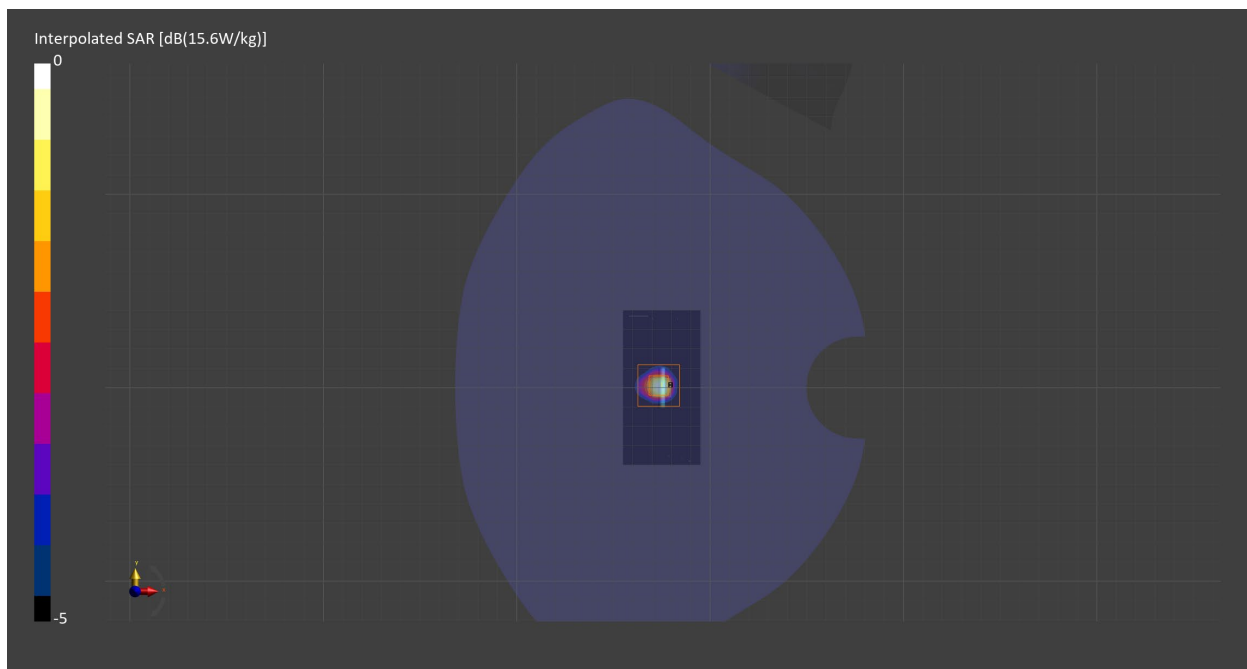
Probe Calibration Date	EX3DV4 - SN7587 2022-04-27	Phantom	Twin-SAM V8.0 (30deg probe tilt) - SN2082
DAE Calibration Date	DAE4 Sn1673 2022-09-15	TSL Meas. Date	HBBL600-10000V6 2023-Feb-06

Scans Setup

	Area Scan	Zoom Scan
Grid Extents [mm]	40.0 x 80.0	22.0 x 22.0 x 22.0
Grid Steps [mm]	10.0 x 10.0	4.0 x 4.0 x 1.4
Sensor Surface [mm]	3.0	1.4
Graded Grid	n/a	Yes
M2/M1 [%]		59.9
Dist 3dB Peak [mm]		7.6

Measurement Results

	Area Scan	Zoom Scan
psSAR1g [W/Kg]	3.40	3.59
psSAR10g [W/Kg]	0.989	1.02
Power Drift [dB]	-0.02	-0.03



2023-03-06 System Performance Check Report D2450V2 - SN963

Summary

Dipole	D2450V2 - SN963		
Frequency [MHz]	2450.0		
Phantom Section TSL	Flat HSL	Dev. Peak [%]	-1.0
Power [dBm]	17.0	Iso. Error [%]	1.7

Exposure Conditions

Dipole Distance [mm]	10	TSL Permittivity	39.7
Conversion Factor	7.7	TSL Conductivity [S/m]	1.83

Hardware Setup

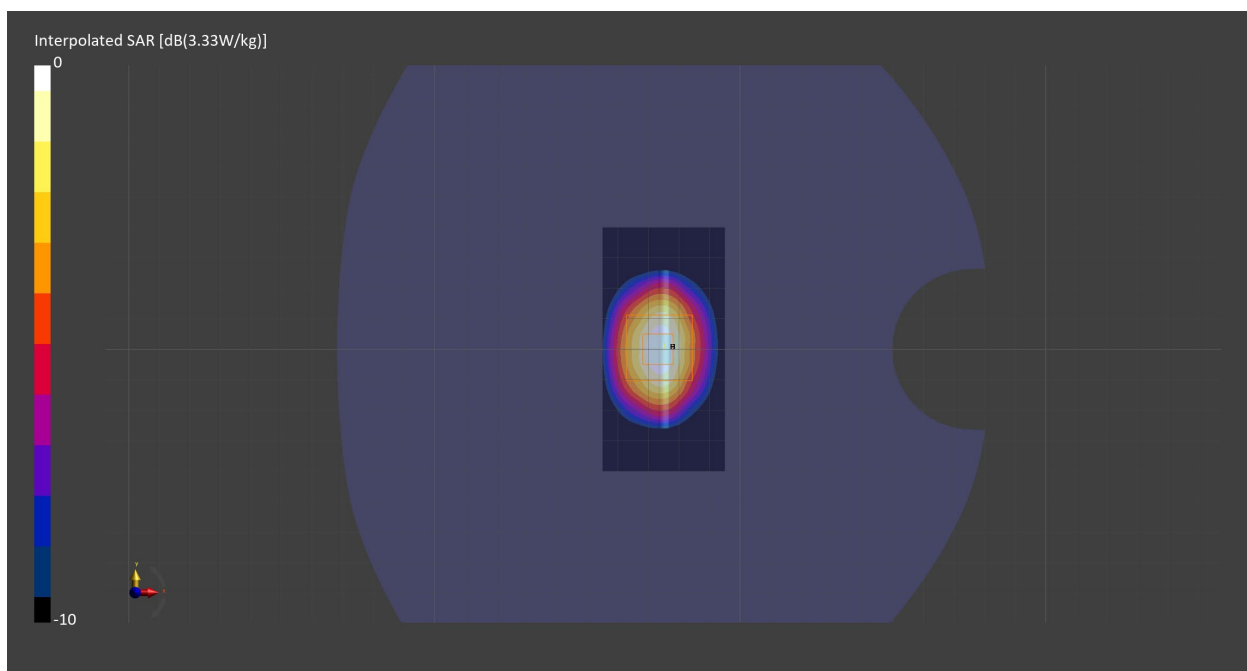
Probe Calibration Date	EX3DV4 - SN7587 2022-04-27	Phantom	Twin-SAM V8.0 (30deg probe tilt) - SN2082
DAE Calibration Date	DAE4 Sn1673 2022-09-15	TSL Meas. Date	HBBL600-10000V6 2023-Mar-06

Scans Setup

	Area Scan	Zoom Scan
Grid Extents [mm]	40.0 x 80.0	30.0 x 30.0 x 30.0
Grid Steps [mm]	10.0 x 10.0	5.0 x 5.0 x 1.5
Sensor Surface [mm]	3.0	1.4
Graded Grid	n/a	Yes
M2/M1 [%]		80.4
Dist 3dB Peak [mm]		9.0

Measurement Results

	Area Scan	Zoom Scan
psSAR1g [W/Kg]	2.54	2.53
psSAR10g [W/Kg]	1.19	1.18
Power Drift [dB]	0.01	-0.01



2023-02-06 System Performance Check Report D2600V2 - SN1104

Summary

Dipole	D2600V2 - SN1104		
Frequency [MHz]	2600.0		
Phantom Section TSL	Flat HSL	Dev. Peak [%]	-1.1
Power [dBm]	17.0	Iso. Error [%]	2.5

Exposure Conditions

Dipole Distance [mm]	10	TSL Permittivity	37.7
Conversion Factor	8.2	TSL Conductivity [S/m]	1.96

Hardware Setup

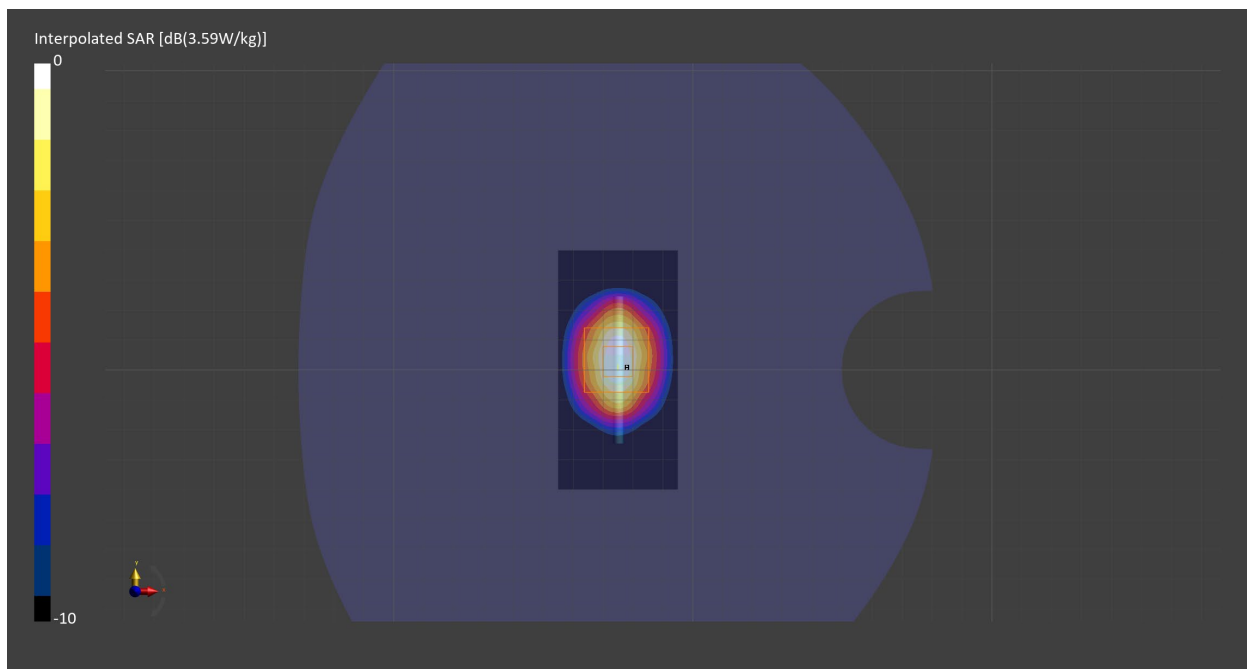
Probe Calibration Date	EX3DV4 - SN7709 2022-12-12	Phantom	Twin-SAM V8.0 (30deg probe tilt) - SN1742
DAE Calibration Date	DAE4 Sn1714 2022-11-23	TSL Meas. Date	HBBL1900-3800V3 2023-Feb-06

Scans Setup

	Area Scan	Zoom Scan
Grid Extents [mm]	40.0 x 80.0	30.0 x 30.0 x 30.0
Grid Steps [mm]	10.0 x 10.0	5.0 x 5.0 x 1.5
Sensor Surface [mm]	3.0	1.4
Graded Grid	n/a	Yes
M2/M1 [%]		78.8
Dist 3dB Peak [mm]		9.1

Measurement Results

	Area Scan	Zoom Scan
psSAR1g [W/Kg]	2.70	2.68
psSAR10g [W/Kg]	1.20	1.18
Power Drift [dB]	0.01	0.00



2023-02-08 System Performance Check Report D2450V2 - SN963

Summary

Dipole	D2450V2 - SN963		
Frequency [MHz]	2450.0		
Phantom Section TSL	Flat HSL	Dev. Peak [%]	2.5
Power [dBm]	17.0	Iso. Error [%]	-2.5

Exposure Conditions

Dipole Distance [mm]	10	TSL Permittivity	39.1
Conversion Factor	8.6	TSL Conductivity [S/m]	1.87

Hardware Setup

Probe Calibration Date	EX3DV4 - SN7709 2022-12-12	Phantom	Twin-SAM V8.0 (30deg probe tilt) - SN1742
DAE Calibration Date	DAE4 Sn1714 2022-11-23	TSL Meas. Date	HBBL1900-3800V3 2023-Feb-08

Scans Setup

	Area Scan	Zoom Scan
Grid Extents [mm]	40.0 x 80.0	30.0 x 30.0 x 30.0
Grid Steps [mm]	10.0 x 10.0	5.0 x 5.0 x 1.5
Sensor Surface [mm]	3.0	1.4
Graded Grid	n/a	Yes
M2/M1 [%]		79.3
Dist 3dB Peak [mm]		9.1

Measurement Results

	Area Scan	Zoom Scan
psSAR1g [W/Kg]	2.54	2.53
psSAR10g [W/Kg]	1.17	1.16
Power Drift [dB]	-0.00	-0.01

