

**SONY**<sup>®</sup>

# User guide

Miracast<sup>™</sup> Wireless Display  
IM10

# Contents

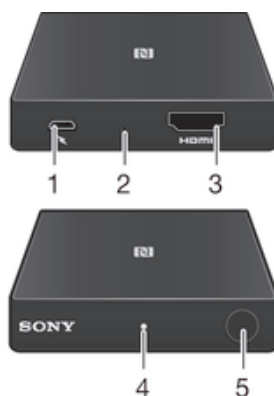
Miracast™ Wireless Display User guide.....	3
Setting up the Miracast™ Wireless Display.....	4
Hardware overview.....	4
Turning on and connecting the Miracast™ Wireless Display to a HDTV.....	4
Sharing your content using screen mirroring.....	5
Connecting when the dongle is placed out of reach.....	7
Starting screen mirroring when the dongle is out of reach.....	7
Resetting the Miracast™ Wireless Display.....	8
Legal information .....	9
Declaration of Conformity for IM10 .....	9

# Miracast™ Wireless Display User guide



# Setting up the Miracast™ Wireless Display

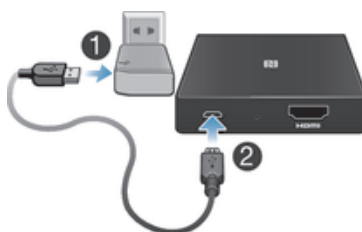
## Hardware overview



1	Micro USB port
2	Reset button
3	HDMI port
4	Notification light
5	Connect button

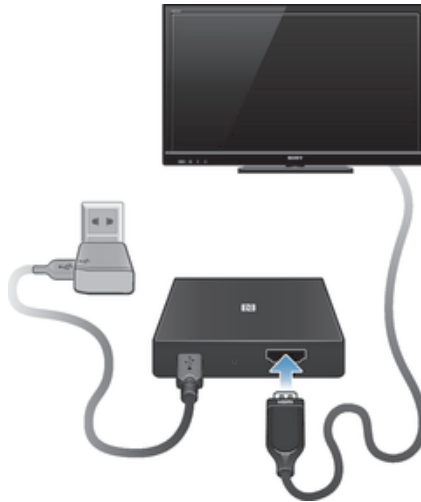
## Turning on and connecting the Miracast™ Wireless Display to a HDTV

### To turn on the Miracast™ Wireless Display



- ! Make sure to use the charger that comes with the dongle.
- 1 Plug one end of the charger cable into the charger.
- 2 Plug the other end of the charger cable into the Micro USB port of the dongle. Once the dongle is turned on, a white notification light starts flashing.

## To connect the Miracast™ Wireless Display to a HDTV



- 1 Plug one end of the HDMI cable into the HDMI port of the HDTV.
- 2 Plug the other end of the HDMI cable into the HDMI port of the Miracast™ Wireless Display. A Sony™ logo appears on the HDTV screen, indicating that the connection is successful.

## Sharing your content using screen mirroring

### Launching screen mirroring

Depending on your mobile device and Android™ version, there are different ways to mirror your screen from your Android™ device. For example, you can use the NFC function or the Miracast™ screen mirroring feature. For instructions on how to turn on screen mirroring in your Android™ device, please see the User guide of your device.

- ! If the Miracast™ Wireless Display is placed in a spot where the user cannot reach the Connect button, the connection mode on the Miracast™ Wireless Display must be changed so that the user can connect remotely. See *Connecting when the dongle is placed out of reach* on page 7
- 💡 If you have an Xperia™ phone, you can use the pre-installed Smart Connect application, to launch screen mirroring.

### To launch screen mirroring using NFC



- 1 Make sure your Miracast™ Wireless Display is powered on, connected to the HDTV, and standing by.
- 2 **Android™ device:** Make sure the NFC function is turned on and that the screen is activated and unlocked.
- 3 Place your Android™ device over the Miracast™ Wireless Display so that the NFC detection area of each device touches the other.
- 4 Follow the instructions that appear on the screens of your Android™ device and the HDTV.

💡 You can also scan the NFC tag provided in the box to start sharing content.

### To launch screen mirroring using the Miracast™ screen mirroring feature

- 1 Make sure your Miracast™ Wireless Display is powered on, connected to the HDTV, and standing by.
- 2 **Android™ device:** Turn on the Miracast™ screen mirroring feature, select Miracast™ Wireless Display in the device list and tap the connect option.
- 3 Follow the instructions that appear on the screens of the Android™ device and the HDTV.

### To turn off screen mirroring using NFC

- 1 Make sure the NFC function is turned on in your Android™ device.
- 2 Place your Android™ device over the Miracast™ Wireless Display so that the NFC detection area of each device touches the other.

### To turn off screen mirroring using the Miracast™ screen mirroring feature

- 1 Open the Miracast™ screen mirroring menu on your Android™ device.
- 2 Select Miracast™ Wireless Display in the device list and tap the disconnect option.

# Connecting when the dongle is placed out of reach

Most users connect to the Miracast™ Wireless Display using the Connect button on the dongle. This is the default connection mode. However, if the dongle is not placed within reach, for example, if it's connected to a projector and fixed to a ceiling, the dongle must be set to remote connection mode. You can then connect to the dongle using a PIN code. The PIN code is shown by the projector or HDTV once screen mirroring is turned on in your Android™ device.

## To switch operating modes

- 1 Unplug the charger cable from your Miracast™ Wireless Display.
- 2 Press and hold down the Connect button.
- 3 While keeping the Connect button pressed, plug the charger cable into the micro USB port of the Miracast™ Wireless display.
- 4 Release the Connect button. After you release the button, the mode switches.

## Starting screen mirroring when the dongle is out of reach

Your Miracast™ Wireless Display comes with an NFC tag, which you can scan to start screen mirroring instead of scanning the NFC area of your Miracast™ Wireless Display.

# Resetting the Miracast™ Wireless Display

Reset the Miracast™ Wireless Display if it behaves unexpectedly. When you reset the dongle, all information about paired Android™ devices is deleted.

## To reset the Miracast™ Wireless Display

- Press and hold down the Reset button until the notification light turns off briefly and then flashes white.



# Legal information

## Sony IM10

Prior to use, please read the *Important information* leaflet separately provided.

This User guide is published by Sony Mobile Communications AB or its local affiliated company, without any warranty. Improvements and changes to this User guide necessitated by typographical errors, inaccuracies of current information, or improvements to programs and/or equipment, may be made by Sony Mobile Communications AB at any time and without notice. Such changes will, however, be incorporated into new editions of this User guide.

All rights reserved.

©2013 Sony Mobile Communications AB.

Publication number: 1278-9927.1

Sony is the trademark or registered trademark of Sony Corporation. All other marks are the property of their respective owners. All rights reserved.

All product and company names mentioned herein are the trademarks or registered trademarks of their respective owners. Any rights not expressly granted herein are reserved. All other trademarks are property of their respective owners.

Visit [www.sonymobile.com](http://www.sonymobile.com) for more information.

All illustrations are for illustration only and may not accurately depict the actual accessory.

## Declaration of Conformity for IM10

We, Sony Mobile Communications AB of

Nya Vattentorget

SE-221 88 Lund, Sweden

declare under our sole responsibility that our product

**Sony type RW-0100**

and in combination with our accessories, to which this declaration relates is in conformity with the appropriate standards **EN 300 328:V1.7.1, EN 301 489-3:V1.4.1, EN 301 489-7:V1.3.1, EN301 489-17:V2.1.1, EN 301 893:V1.7.1, EN302 502 and EN 60 950-1:2006+A11:2009+A1:2010** following the provisions of, Radio Equipment and Telecommunication Terminal Equipment directive 1999/5/EC.

Lund, July 2013



A handwritten signature in blue ink, appearing to read 'Pär Thuresson', is written over a horizontal line.

Pär Thuresson,  
*Quality Officer, SVP, Quality & Customer Services*

We fulfil the requirements of the R&TTE Directive (1999/5/EC).

## FCC Statement

This device complies with Part 15 of the FCC rules. Operation is subject to the following two conditions: (1) This device may not cause harmful interference, and (2) This device must accept any interference received, including interference that may cause undesired operation.

Any change or modification not expressly approved by Sony may void the user's authority to operate the equipment.

This equipment has been tested and found to comply with the limits for a Class B digital device, pursuant to Part 15 of the FCC Rules. These limits are designed to provide reasonable protection against harmful interference in a residential installation. This equipment generates, uses and can radiate radio frequency energy and, if not installed and used in accordance with the instructions, may cause harmful interference to radio communications. However, there is no guarantee that interference will not occur in a particular installation.

If this equipment does cause harmful interference to radio or television reception, which can be determined by turning the equipment off and on, the user is encouraged to try to correct the interference by one or more of the following measures:

- Reorient or relocate the receiving antenna.
- Increase the separation between the equipment and receiver.
- Connect the equipment into an outlet on a circuit different from that to which the receiver is connected.
- Consult the dealer or an experienced radio/TV technician for help.



## Industry Canada Statement

This device complies with RSS-210 of Industry Canada.

Operation is subject to the following two conditions: (1) this device may not cause interference, and (2) this device must accept any interference, including interference that may cause undesired operation of the device.

This Class B digital apparatus complies with Canadian ICES-003.

Cet appareil numérique de la classe B est conforme à la norme NMB-003 du Canada.