

## #01\_GSM850\_GPRS(4 Tx slots)\_Left Cheek\_Ch251

Communication System: GSM850; Frequency: 848.8 MHz; Duty Cycle: 1:2.08

Medium: HSL\_850\_151203 Medium parameters used:  $f = 849 \text{ MHz}$ ;  $\sigma = 0.919 \text{ S/m}$ ;  $\epsilon_r = 41.419$ ;  $\rho = 1000 \text{ kg/m}^3$

Ambient Temperature :  $23.6 \text{ }^\circ\text{C}$ ; Liquid Temperature :  $22.6 \text{ }^\circ\text{C}$

### DASY5 Configuration

- Probe: ES3DV3 - SN3270; ConvF(6.32, 6.32, 6.32); Calibrated: 2015/9/28;
- Sensor-Surface: 2mm (Mechanical Surface Detection)
- Electronics: DAE4 Sn778; Calibrated: 2015/8/25
- Phantom: SAM\_Left; Type: QD000P40CD; Serial: S/N:1796
- Measurement SW: DASY52, Version 52.8 (8); SEMCAD X Version 14.6.10 (7331)

**Configuration/Ch251/Area Scan (61x111x1):** Interpolated grid:  $dx=1.500 \text{ mm}$ ,  $dy=1.500 \text{ mm}$   
 Maximum value of SAR (interpolated) =  $0.437 \text{ W/kg}$

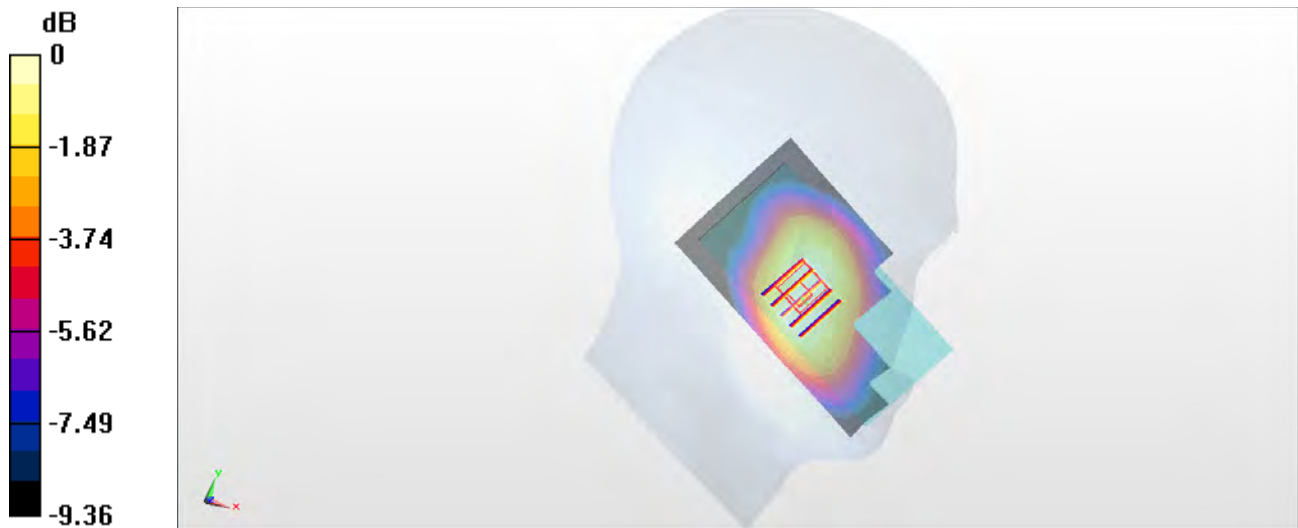
**Configuration/Ch251/Zoom Scan (5x5x7)/Cube 0:** Measurement grid:  $dx=8\text{mm}$ ,  $dy=8\text{mm}$ ,  $dz=5\text{mm}$

Reference Value =  $22.31 \text{ V/m}$ ; Power Drift =  $-0.06 \text{ dB}$

Peak SAR (extrapolated) =  $0.508 \text{ W/kg}$

**SAR(1 g) =  $0.362 \text{ W/kg}$ ; SAR(10 g) =  $0.273 \text{ W/kg}$**

Maximum value of SAR (measured) =  $0.426 \text{ W/kg}$



0 dB =  $0.426 \text{ W/kg} = -3.71 \text{ dBW/kg}$

## #02\_GSM1900\_GPRS (4 Tx slots)\_Left Cheek\_Ch810

Communication System: PCS; Frequency: 1909.8 MHz; Duty Cycle: 1:2.08

Medium: HSL\_1900\_151203 Medium parameters used:  $f = 1910$  MHz;  $\sigma = 1.437$  S/m;  $\epsilon_r = 40.471$ ;  $\rho = 1000$  kg/m<sup>3</sup>

Ambient Temperature : 23.4 °C; Liquid Temperature : 22.4 °C

### DASY5 Configuration

- Probe: ES3DV3 - SN3270; ConvF(5.12, 5.12, 5.12); Calibrated: 2015/9/28;
- Sensor-Surface: 2mm (Mechanical Surface Detection)
- Electronics: DAE4 Sn778; Calibrated: 2015/8/25
- Phantom: SAM\_RIGHT; Type: QD000P40CD; Serial: 1719
- Measurement SW: DASY52, Version 52.8 (8); SEMCAD X Version 14.6.10 (7331)

**Configuration/Ch810/Area Scan (61x111x1):** Interpolated grid: dx=1.500 mm, dy=1.500 mm

Maximum value of SAR (interpolated) = 0.191 W/kg

**Configuration/Ch810/Zoom Scan (5x5x7)/Cube 0:** Measurement grid: dx=8mm, dy=8mm, dz=5mm

Reference Value = 9.341 V/m; Power Drift = 0.05 dB

Peak SAR (extrapolated) = 0.253 W/kg

**SAR(1 g) = 0.152 W/kg; SAR(10 g) = 0.093 W/kg**

Maximum value of SAR (measured) = 0.204 W/kg



0 dB = 0.191 W/kg = -7.19 dBW/kg

### #03\_WCDMA II\_RMC 12.2Kbps\_Right Cheek\_Ch9538

Communication System: WCDMA; Frequency: 1907.6 MHz; Duty Cycle: 1:1  
 Medium: HSL\_1900\_151203 Medium parameters used:  $f = 1908 \text{ MHz}$ ;  $\sigma = 1.435 \text{ S/m}$ ;  $\epsilon_r = 40.478$ ;  $\rho = 1000 \text{ kg/m}^3$   
 Ambient Temperature :  $23.4 \text{ }^\circ\text{C}$ ; Liquid Temperature :  $22.4 \text{ }^\circ\text{C}$

#### DASY5 Configuration

- Probe: ES3DV3 - SN3270; ConvF(5.12, 5.12, 5.12); Calibrated: 2015/9/28;
- Sensor-Surface: 2mm (Mechanical Surface Detection)
- Electronics: DAE4 Sn778; Calibrated: 2015/8/25
- Phantom: SAM\_RIGHT; Type: QD000P40CD; Serial: 1719
- Measurement SW: DASY52, Version 52.8 (8); SEMCAD X Version 14.6.10 (7331)

**Configuration/Ch9538/Area Scan (61x111x1):** Interpolated grid:  $dx=1.500 \text{ mm}$ ,  $dy=1.500 \text{ mm}$   
 Maximum value of SAR (interpolated) =  $0.473 \text{ W/kg}$

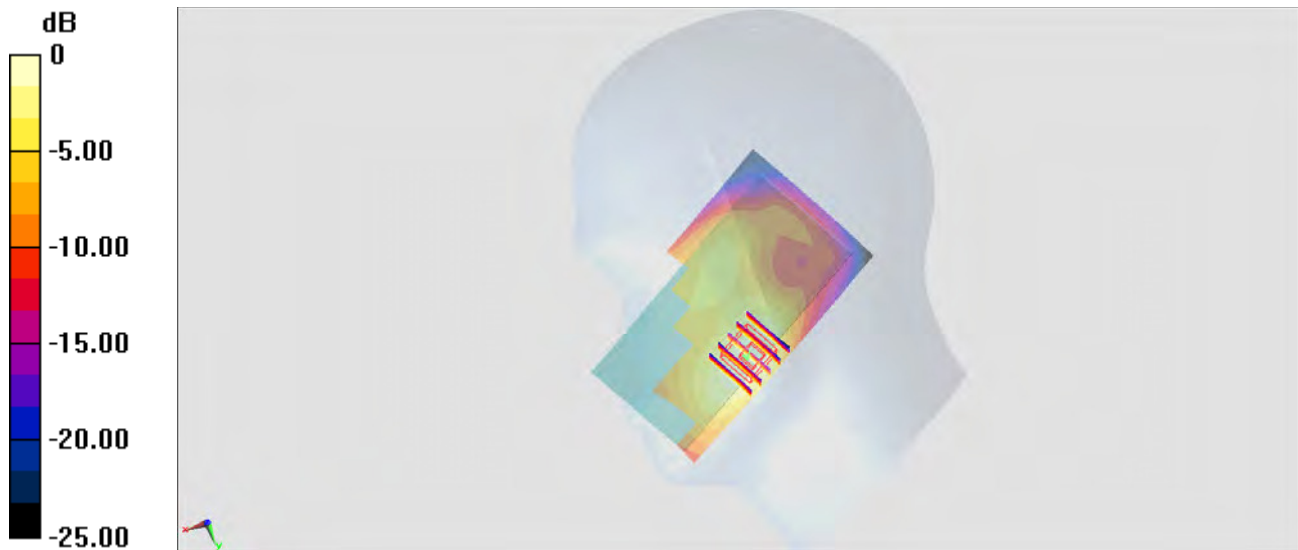
**Configuration/Ch9538/Zoom Scan (5x5x7)/Cube 0:** Measurement grid:  $dx=8\text{mm}$ ,  $dy=8\text{mm}$ ,  $dz=5\text{mm}$

Reference Value =  $14.56 \text{ V/m}$ ; Power Drift =  $0.03 \text{ dB}$

Peak SAR (extrapolated) =  $0.578 \text{ W/kg}$

**SAR(1 g) =  $0.356 \text{ W/kg}$ ; SAR(10 g) =  $0.217 \text{ W/kg}$**

Maximum value of SAR (measured) =  $0.467 \text{ W/kg}$



$0 \text{ dB} = 0.473 \text{ W/kg} = -3.25 \text{ dBW/kg}$

### #04\_WCDMA V\_RMC 12.2Kbps\_Left Cheek\_Ch4233

Communication System: WCDMA ; Frequency: 846.6 MHz; Duty Cycle: 1:1

Medium: HSL\_850\_151203 Medium parameters used:  $f = 847 \text{ MHz}$ ;  $\sigma = 0.917 \text{ S/m}$ ;  $\epsilon_r = 41.444$ ;  $\rho = 1000 \text{ kg/m}^3$

Ambient Temperature :  $23.6 \text{ }^\circ\text{C}$ ; Liquid Temperature :  $22.6 \text{ }^\circ\text{C}$

#### DASY5 Configuration

- Probe: ES3DV3 - SN3270; ConvF(6.32, 6.32, 6.32); Calibrated: 2015/9/28;
- Sensor-Surface: 2mm (Mechanical Surface Detection)
- Electronics: DAE4 Sn778; Calibrated: 2015/8/25
- Phantom: SAM\_Left; Type: QD000P40CD; Serial: S/N:1796
- Measurement SW: DASY52, Version 52.8 (8); SEMCAD X Version 14.6.10 (7331)

**Configuration/Ch4233/Area Scan (61x111x1):** Interpolated grid:  $dx=1.500 \text{ mm}$ ,  $dy=1.500 \text{ mm}$

Maximum value of SAR (interpolated) =  $0.403 \text{ W/kg}$

**Configuration/Ch4233/Zoom Scan (5x5x7)/Cube 0:** Measurement grid:  $dx=8\text{mm}$ ,  $dy=8\text{mm}$ ,  $dz=5\text{mm}$

Reference Value =  $21.80 \text{ V/m}$ ; Power Drift =  $-0.02 \text{ dB}$

Peak SAR (extrapolated) =  $0.448 \text{ W/kg}$

**SAR(1 g) =  $0.325 \text{ W/kg}$ ; SAR(10 g) =  $0.247 \text{ W/kg}$**

Maximum value of SAR (measured) =  $0.384 \text{ W/kg}$



0 dB =  $0.384 \text{ W/kg}$  =  $-4.16 \text{ dBW/kg}$

## #05\_LTE Band 5\_10M\_QPSK\_1\_0\_Left Cheek\_Ch20525

Communication System: LTE ; Frequency: 836.5 MHz;Duty Cycle: 1:1

Medium: HSL\_850\_151203 Medium parameters used :  $f = 836.5$  MHz;  $\sigma = 0.907$  S/m;  $\epsilon_r = 41.573$ ;  $\rho = 1000$  kg/m<sup>3</sup>

Ambient Temperature : 23.6 °C ; Liquid Temperature : 22.6 °C

### DASY5 Configuration

- Probe: ES3DV3 - SN3270; ConvF(6.32, 6.32, 6.32); Calibrated: 2015/9/28;
- Sensor-Surface: 2mm (Mechanical Surface Detection)
- Electronics: DAE4 Sn778; Calibrated: 2015/8/25
- Phantom: SAM\_Left; Type: QD000P40CD; Serial: S/N:1796
- Measurement SW: DASY52, Version 52.8 (8); SEMCAD X Version 14.6.10 (7331)

**Configuration/Ch20525/Area Scan (61x11x1):** Interpolated grid: dx=1.500 mm, dy=1.500 mm

Maximum value of SAR (interpolated) = 0.366 W/kg

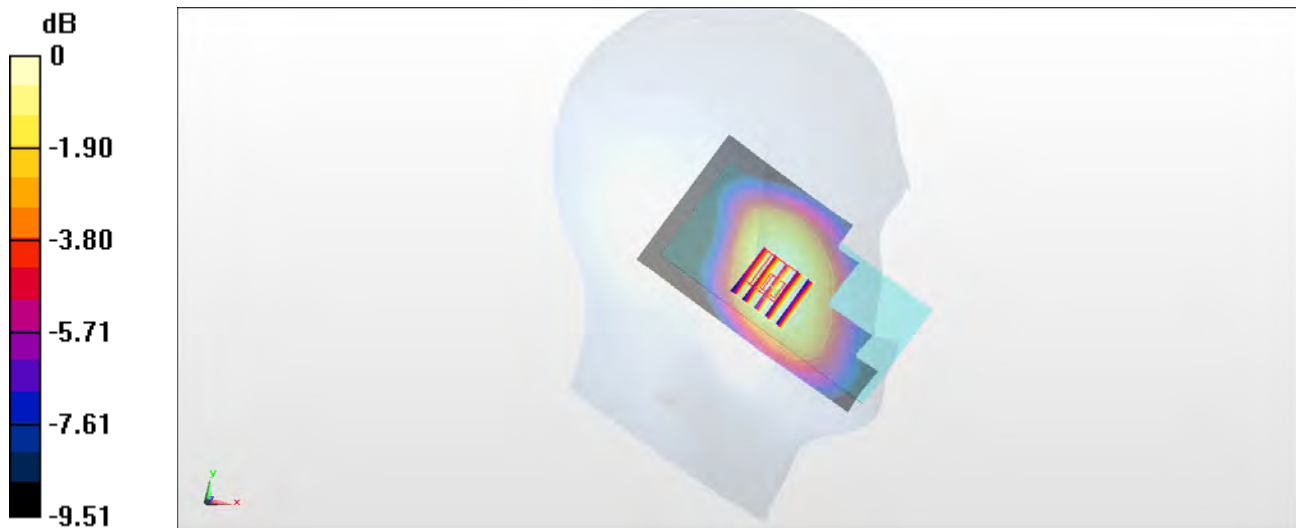
**Configuration/Ch20525/Zoom Scan (5x5x7)/Cube 0:** Measurement grid: dx=8mm, dy=8mm, dz=5mm

Reference Value = 19.57 V/m; Power Drift = 0.01 dB

Peak SAR (extrapolated) = 0.395 W/kg

**SAR(1 g) = 0.286 W/kg; SAR(10 g) = 0.217 W/kg**

Maximum value of SAR (measured) = 0.342 W/kg



0 dB = 0.342 W/kg = -4.66 dBW/kg

## #06\_LTE Band 7\_20M\_QPSK\_1\_0\_Left Cheek\_Ch21100

Communication System: LTE ; Frequency: 2535 MHz;Duty Cycle: 1:1

Medium: HSL\_2600\_151204 Medium parameters used:  $f = 2535 \text{ MHz}$ ;  $\sigma = 1.837 \text{ S/m}$ ;  $\epsilon_r = 39.83$ ;  $\rho = 1000 \text{ kg/m}^3$

Ambient Temperature :  $23.5 \text{ }^\circ\text{C}$ ; Liquid Temperature :  $22.5 \text{ }^\circ\text{C}$

### DASY5 Configuration

- Probe: ES3DV3 - SN3270; ConvF(4.44, 4.44, 4.44); Calibrated: 2015/9/28;
- Sensor-Surface: 2mm (Mechanical Surface Detection)
- Electronics: DAE4 Sn778; Calibrated: 2015/8/25
- Phantom: SAM LEFT; Type: QD000P40CD; Serial: TP:1718
- Measurement SW: DASY52, Version 52.8 (8); SEMCAD X Version 14.6.10 (7331)

**Configuration/Ch21100/Area Scan (71x141x1):** Interpolated grid:  $dx=1.200 \text{ mm}$ ,  $dy=1.200 \text{ mm}$

Maximum value of SAR (interpolated) =  $0.478 \text{ W/kg}$

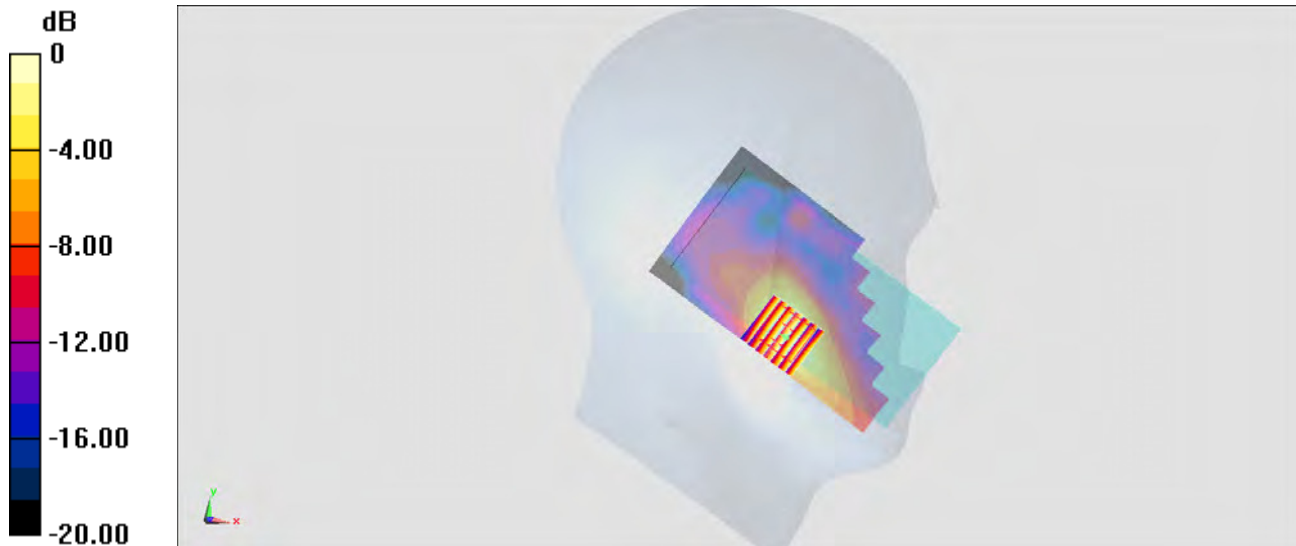
**Configuration/Ch21100/Zoom Scan (7x7x7)/Cube 0:** Measurement grid:  $dx=5\text{mm}$ ,  $dy=5\text{mm}$ ,  $dz=5\text{mm}$

Reference Value =  $14.60 \text{ V/m}$ ; Power Drift =  $0.15 \text{ dB}$

Peak SAR (extrapolated) =  $0.607 \text{ W/kg}$

**SAR(1 g) =  $0.325 \text{ W/kg}$ ; SAR(10 g) =  $0.166 \text{ W/kg}$**

Maximum value of SAR (measured) =  $0.461 \text{ W/kg}$



$0 \text{ dB} = 0.478 \text{ W/kg} = -3.21 \text{ dBW/kg}$

**#07\_LTE Band 41\_20M\_QPSK\_1\_0\_Left Cheek\_Ch40740**

Communication System: LTE-TDD; Frequency: 2605 MHz; Duty Cycle: 1:1.59

Medium: HSL\_2600\_151127 Medium parameters used:  $f = 2605$  MHz;  $\sigma = 1.932$  S/m;  $\epsilon_r = 38.134$ ;  $\rho = 1000$  kg/m<sup>3</sup>

Ambient Temperature : 23.1 °C; Liquid Temperature : 22.1 °C

DASY5 Configuration:

- Probe: EX3DV4 - SN3931; ConvF(7.29, 7.29, 7.29); Calibrated: 2015/10/1;
- Sensor-Surface: 1.4mm (Mechanical Surface Detection)
- Electronics: DAE3 Sn577; Calibrated: 2015/9/24
- Phantom: SAM\_Left; Type: QD000P40CD; Serial: TP:1644
- Measurement SW: DASY52, Version 52.8 (8); SEMCAD X Version 14.6.10 (7331)

**Configuration/Ch40740/Area Scan (71x141x1):** Interpolated grid: dx=1.200 mm, dy=1.200 mm

Maximum value of SAR (interpolated) = 0.290 W/kg

**Configuration/Ch40740/Zoom Scan (7x7x7)/Cube 0:** Measurement grid: dx=5mm, dy=5mm, dz=5mm

Reference Value = 11.56 V/m; Power Drift = -0.02 dB

Peak SAR (extrapolated) = 0.369 W/kg

**SAR(1 g) = 0.189 W/kg; SAR(10 g) = 0.102 W/kg**

Maximum value of SAR (measured) = 0.302 W/kg



0 dB = 0.302 W/kg = -5.20 dBW/kg

## #08\_WLAN2.4GHz\_802.11b 1Mbps\_Left Cheek\_Ch11

Communication System: 802.11b ; Frequency: 2462 MHz;Duty Cycle: 1:1

Medium: HSL\_2450\_151128 Medium parameters used:  $f = 2462$  MHz;  $\sigma = 1.74$  S/m;  $\epsilon_r = 38.544$ ;  $\rho = 1000$  kg/m<sup>3</sup>

Ambient Temperature : 23.5 °C ; Liquid Temperature : 22.5 °C

DASY5 Configuration:

- Probe: EX3DV4 - SN3931; ConvF(7.51, 7.51, 7.51); Calibrated: 2015/10/1;
- Sensor-Surface: 1.4mm (Mechanical Surface Detection)
- Electronics: DAE3 Sn577; Calibrated: 2015/9/24
- Phantom: SAM\_Left; Type: QD000P40CD; Serial: TP:1644
- Measurement SW: DASY52, Version 52.8 (8);SEMCAD X Version 14.6.10 (7331)

**Configuration/Ch11/Area Scan (71x141x1):** Interpolated grid: dx=1.200 mm, dy=1.200 mm

Maximum value of SAR (interpolated) = 0.437 W/kg

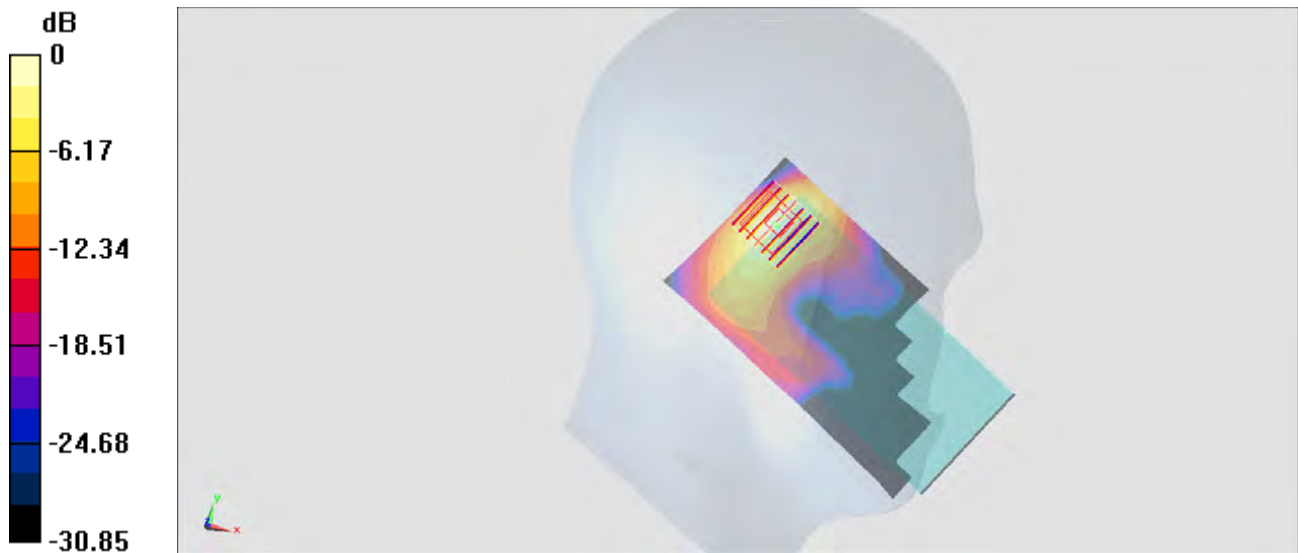
**Configuration/Ch11/Zoom Scan (7x7x7)/Cube 0:** Measurement grid: dx=5mm, dy=5mm, dz=5mm

Reference Value = 8.965 V/m; Power Drift = -0.09 dB

Peak SAR (extrapolated) = 0.750 W/kg

**SAR(1 g) = 0.305 W/kg; SAR(10 g) = 0.130 W/kg**

Maximum value of SAR (measured) = 0.515 W/kg



0 dB = 0.515 W/kg = -2.88 dBW/kg



**#09\_WLAN5GHz\_802.11a 6Mbps\_Left Cheek\_Ch56**

Communication System: 802.11a; Frequency: 5280 MHz; Duty Cycle: 1:1.029

Medium: HSL\_5G\_151122 Medium parameters used:  $f = 5280$  MHz;  $\sigma = 4.573$  S/m;  $\epsilon_r = 36.37$ ;  $\rho = 1000$  kg/m<sup>3</sup>

Ambient Temperature : 23.6 °C; Liquid Temperature : 22.6 °C

DASY5 Configuration:

- Probe: EX3DV4 - SN3931; ConvF(5.13, 5.13, 5.13); Calibrated: 2015/10/1;
- Sensor-Surface: 1.4mm (Mechanical Surface Detection)
- Electronics: DAE3 Sn577; Calibrated: 2015/9/24
- Phantom: SAM-Right; Type: SAM; Serial: 1795
- Measurement SW: DASY52, Version 52.8 (8); SEMCAD X Version 14.6.10 (7331)

**Configuration/Ch56/Area Scan (101x181x1):** Interpolated grid: dx=1.000 mm, dy=1.000 mm  
Maximum value of SAR (interpolated) = 0.723 W/kg

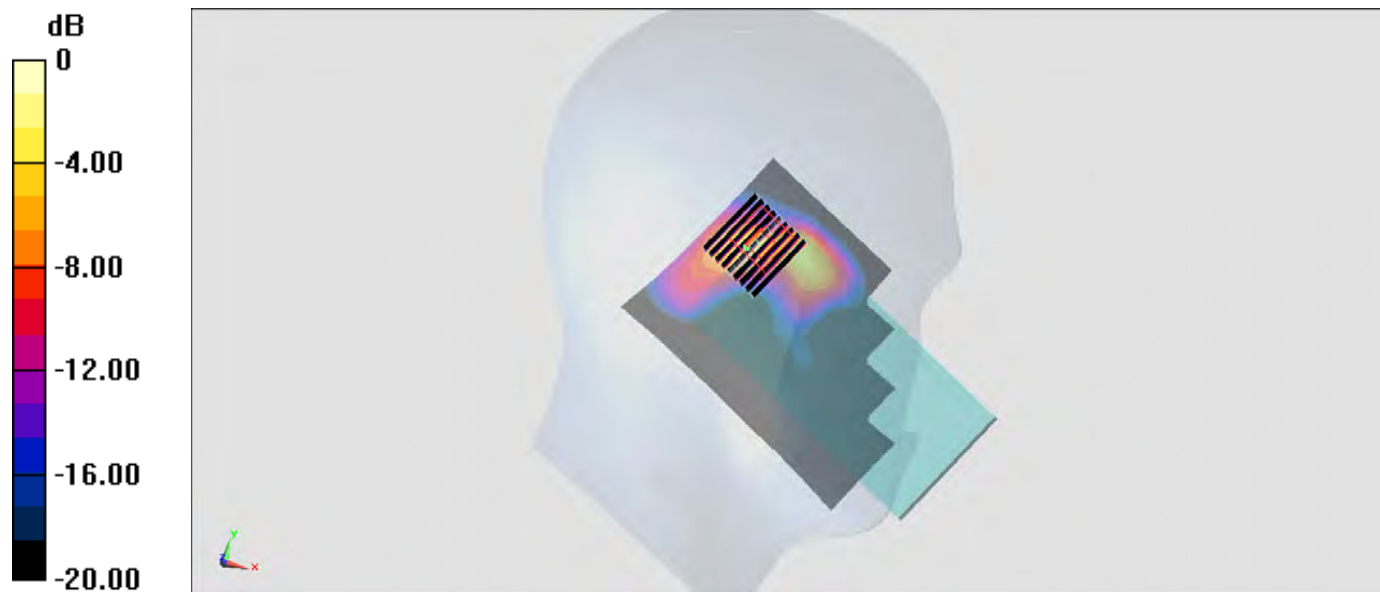
**Configuration/Ch56/Zoom Scan (9x10x7)/Cube 0:** Measurement grid: dx=4mm, dy=4mm, dz=1.4mm

Reference Value = 12.52 V/m; Power Drift = 0.01 dB

Peak SAR (extrapolated) = 1.59 W/kg

**SAR(1 g) = 0.408 W/kg; SAR(10 g) = 0.107 W/kg**

Maximum value of SAR (measured) = 1.03 W/kg



0 dB = 1.03 W/kg = 0.13 dBW/kg

## #10\_WLAN5GHz\_802.11a\_6Mbps\_Left Cheek\_Ch132

Communication System: 802.11a ; Frequency: 5660 MHz;Duty Cycle: 1:1.029

Medium: HSL\_5G\_151122 Medium parameters used:  $f = 5660$  MHz;  $\sigma = 4.939$  S/m;  $\epsilon_r = 35.907$ ;  $\rho = 1000$  kg/m<sup>3</sup>

Ambient Temperature : 23.6 °C; Liquid Temperature : 22.6 °C

### DASY5 Configuration

- Probe: EX3DV4 - SN3931; ConvF(4.42, 4.42, 4.42); Calibrated: 2015/10/1;
- Sensor-Surface: 1.4mm (Mechanical Surface Detection)
- Electronics: DAE3 Sn577; Calibrated: 2015/9/24
- Phantom: SAM-Right; Type: SAM; Serial: 1795
- Measurement SW: DASY52, Version 52.8 (8);SEMCAD X Version 14.6.10 (7331)

**Configuration/Ch132/Area Scan (101x181x1):** Interpolated grid: dx=1.000 mm, dy=1.000 mm

Maximum value of SAR (interpolated) = 0.697 W/kg

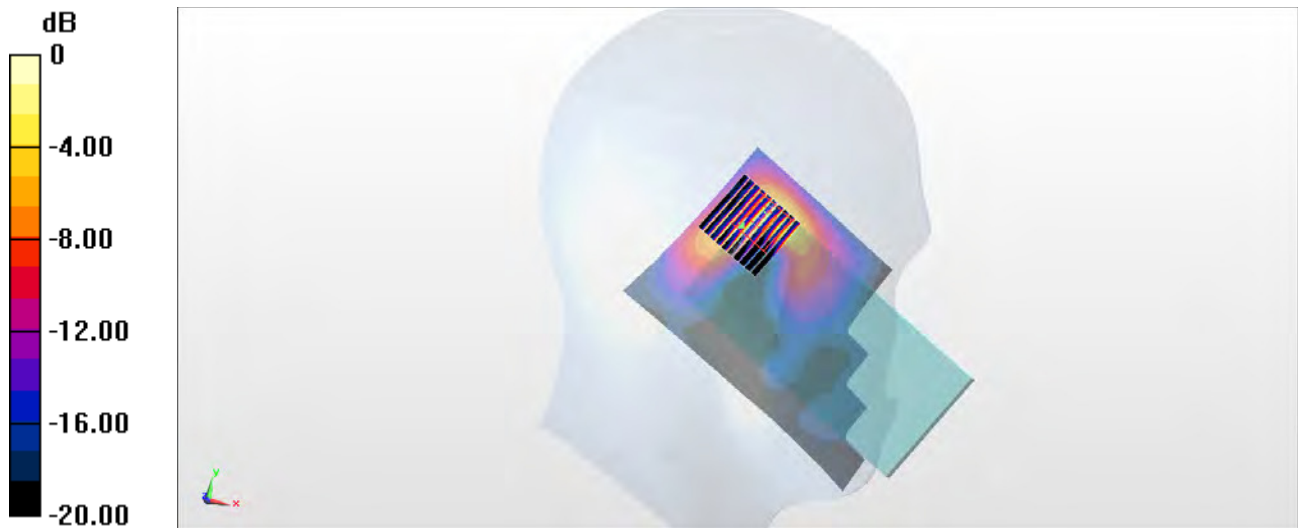
**Configuration/Ch132/Zoom Scan (10x10x7)/Cube 0:** Measurement grid: dx=4mm, dy=4mm, dz=1.4mm

Reference Value = 9.285 V/m; Power Drift = 0.12 dB

Peak SAR (extrapolated) = 2.16 W/kg

**SAR(1 g) = 0.493 W/kg; SAR(10 g) = 0.170 W/kg**

Maximum value of SAR (measured) = 1.19 W/kg



0 dB = 1.19 W/kg = 0.76 dBW/kg

**#11\_WLAN5GHz\_802.11a\_6Mbps\_Left Cheek\_Ch157**

Communication System: 802.11a ; Frequency: 5785 MHz;Duty Cycle: 1:1.029

Medium: HSL\_5G\_151122 Medium parameters used:  $f = 5785$  MHz;  $\sigma = 5.056$  S/m;  $\epsilon_r = 35.769$ ;  $\rho = 1000$  kg/m<sup>3</sup>

Ambient Temperature : 23.6 °C ; Liquid Temperature : 22.6 °C

DASY5 Configuration:

- Probe: EX3DV4 - SN3931; ConvF(4.58, 4.58, 4.58); Calibrated: 2015/10/1;
- Sensor-Surface: 1.4mm (Mechanical Surface Detection)
- Electronics: DAE3 Sn577; Calibrated: 2015/9/24
- Phantom: SAM-Right..Type:.SAM..Serial:.1795
- Measurement SW: DASY52, Version 52.8 (8);SEMCAD X Version 14.6.10 (7331)

**Configuration/Ch157/Area Scan (101x181x1):** Interpolated grid: dx=1.000 mm, dy=1.000 mm

Maximum value of SAR (interpolated) = 0.942 W/kg

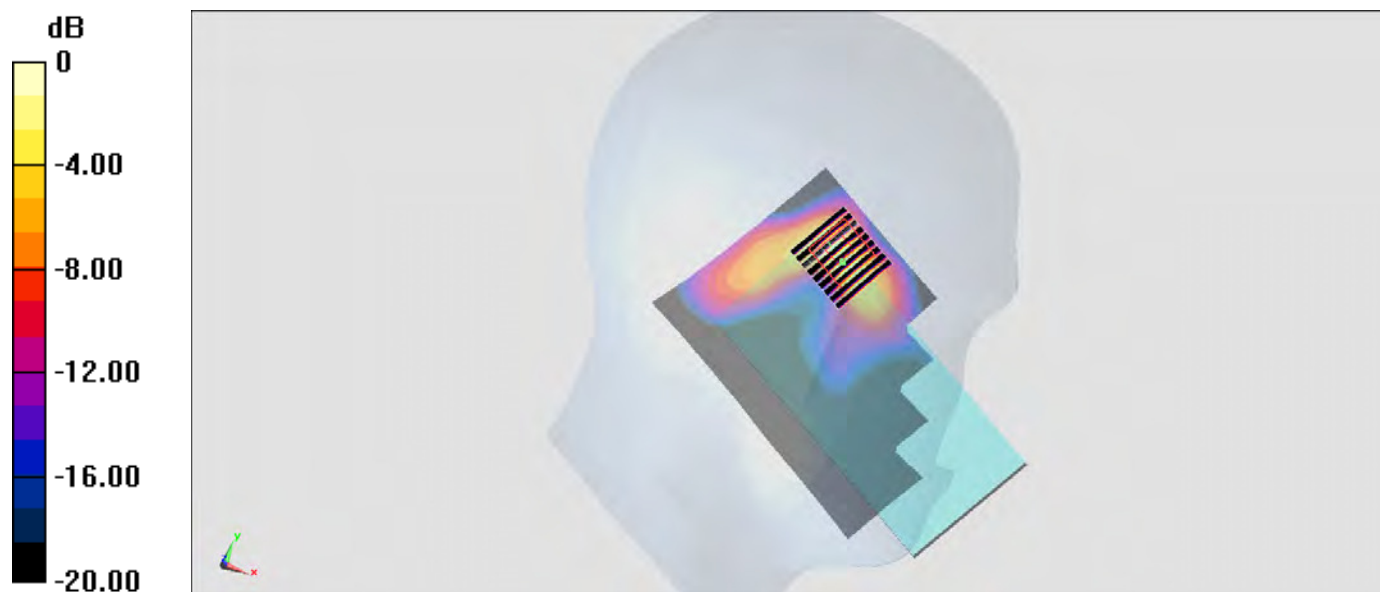
**Configuration/Ch157/Zoom Scan (9x9x7)/Cube 0:** Measurement grid: dx=4mm, dy=4mm, dz=1.4mm

Reference Value = 5.860 V/m; Power Drift = 0.15 dB

Peak SAR (extrapolated) = 2.25 W/kg

**SAR(1 g) = 0.490 W/kg; SAR(10 g) = 0.147 W/kg**

Maximum value of SAR (measured) = 1.28 W/kg



0 dB = 1.28 W/kg = 1.07 dBW/kg

## #12\_GSM850\_GPRS (4 Tx slots)\_Back\_10mm\_Ch251

Communication System: GSM850 ; Frequency: 848.8 MHz; Duty Cycle: 1:2.08

Medium: MSL\_850\_151120 Medium parameters used:  $f = 849$  MHz;  $\sigma = 1.016$  S/m;  $\epsilon_r = 54.828$ ;  $\rho = 1000$  kg/m<sup>3</sup>

Ambient Temperature : 23.2 °C ; Liquid Temperature : 22.2 °C

DASY5 Configuration:

- Probe: ES3DV3 - SN3270; ConvF(6.24, 6.24, 6.24); Calibrated: 2015/9/28;
- Sensor-Surface: 2mm (Mechanical Surface Detection)
- Electronics: DAE4 Sn778; Calibrated: 2015/8/25
- Phantom: SAM-Right; Type: SAM; Serial: 1795
- Measurement SW: DASY52, Version 52.8 (8); SEMCAD X Version 14.6.10 (7331)

**Configuration/Ch251/Area Scan (61x111x1):** Interpolated grid: dx=1.500 mm, dy=1.500 mm  
Maximum value of SAR (interpolated) = 0.723 W/kg

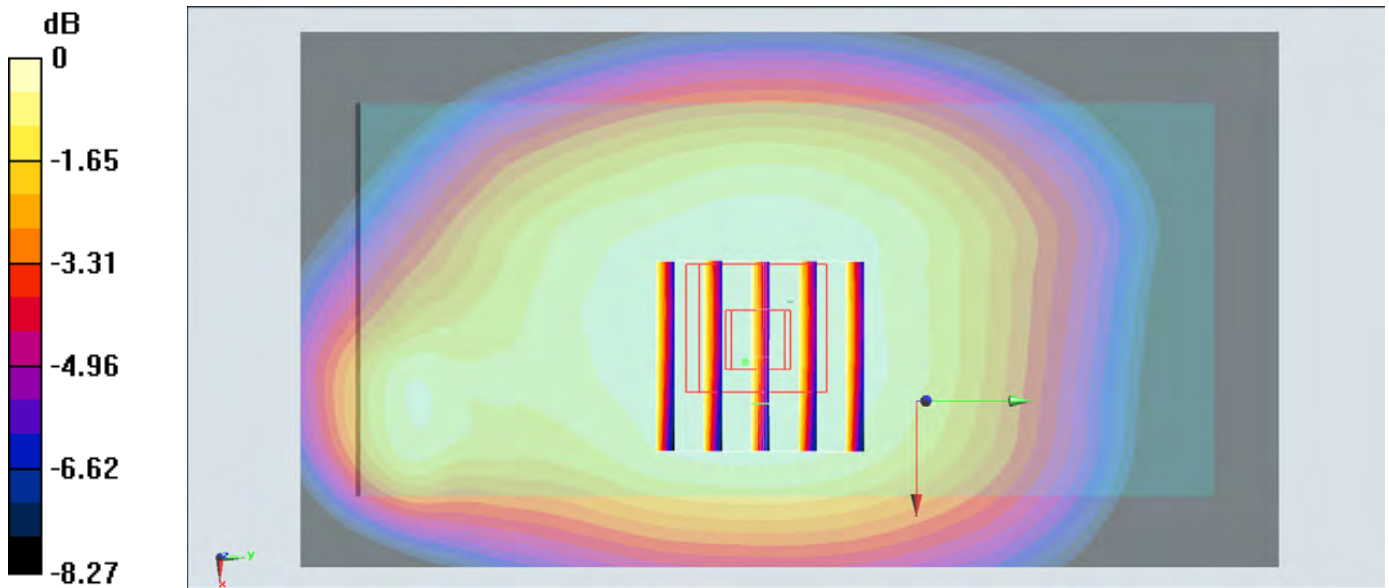
**Configuration/Ch251/Zoom Scan (5x5x7)/Cube 0:** Measurement grid: dx=8mm, dy=8mm, dz=5mm

Reference Value = 24.65 V/m; Power Drift = -0.01 dB

Peak SAR (extrapolated) = 0.829 W/kg

**SAR(1 g) = 0.601 W/kg; SAR(10 g) = 0.466 W/kg**

Maximum value of SAR (measured) = 0.701 W/kg



0 dB = 0.701 W/kg = -1.54 dBW/kg

### #13\_GSM1900\_GPRS (4 Tx slots)\_Back\_10mm\_Ch810

Communication System: PCS ; Frequency: 1909.8 MHz; Duty Cycle: 1:2.08

Medium: MSL\_1900\_151117 Medium parameters used:  $f = 1910$  MHz;  $\sigma = 1.565$  S/m;  $\epsilon_r = 51.517$ ;  $\rho = 1000$  kg/m<sup>3</sup>

Ambient Temperature : 23.7 °C ; Liquid Temperature : 22.7 °C

DASY5 Configuration:

- Probe: ES3DV3 - SN3270; ConvF(4.78, 4.78, 4.78); Calibrated: 2015/9/28;
- Sensor-Surface: 2mm (Mechanical Surface Detection)
- Electronics: DAE4 Sn778; Calibrated: 2015/8/25
- Phantom: SAM\_Left; Type: QD000P40CD; Serial: TP:1644
- Measurement SW: DASY52, Version 52.8 (8); SEMCAD X Version 14.6.10 (7331)

**Configuration/Ch810/Area Scan (61x111x1):** Interpolated grid: dx=1.500 mm, dy=1.500 mm  
 Maximum value of SAR (interpolated) = 1.01 W/kg

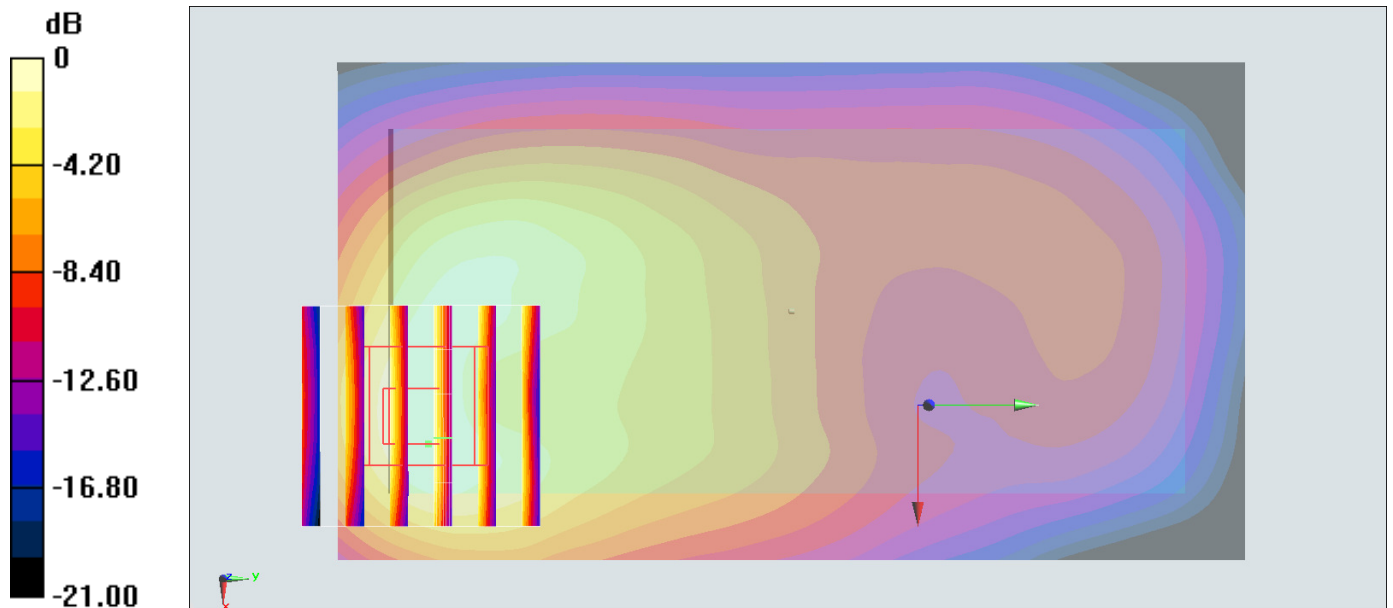
**Configuration/Ch810/Zoom Scan (6x6x7)/Cube 0:** Measurement grid: dx=8mm, dy=8mm, dz=5mm

Reference Value = 23.05 V/m; Power Drift = -0.02 dB

Peak SAR (extrapolated) = 1.33 W/kg

**SAR(1 g) = 0.721 W/kg; SAR(10 g) = 0.395 W/kg**

Maximum value of SAR (measured) = 0.955 W/kg



0 dB = 0.955 W/kg = -0.20 dBW/kg

## #14\_WCDMA II\_RMC 12.2Kbps\_Back\_10mm\_Ch9400

Communication System: WCDMA; Frequency: 1880 MHz; Duty Cycle: 1:1

Medium: MSL\_1900\_151202 Medium parameters used:  $f = 1880$  MHz;  $\sigma = 1.551$  S/m;  $\epsilon_r = 54.793$ ;  $\rho = 1000$  kg/m<sup>3</sup>

Ambient Temperature : 23.6 °C; Liquid Temperature : 22.6 °C

### DASY5 Configuration

- Probe: ES3DV3 - SN3270; ConvF(4.78, 4.78, 4.78); Calibrated: 2015/9/28;
- Sensor-Surface: 2mm (Mechanical Surface Detection)
- Electronics: DAE4 Sn778; Calibrated: 2015/8/25
- Phantom: SAM\_Left; Type: QD000P40CD; Serial: S/N:1796
- Measurement SW: DASY52, Version 52.8 (8); SEMCAD X Version 14.6.10 (7331)

**Configuration/Ch9400/Area Scan (61x111x1):** Interpolated grid: dx=1.500 mm, dy=1.500 mm  
Maximum value of SAR (interpolated) = 1.31 W/kg

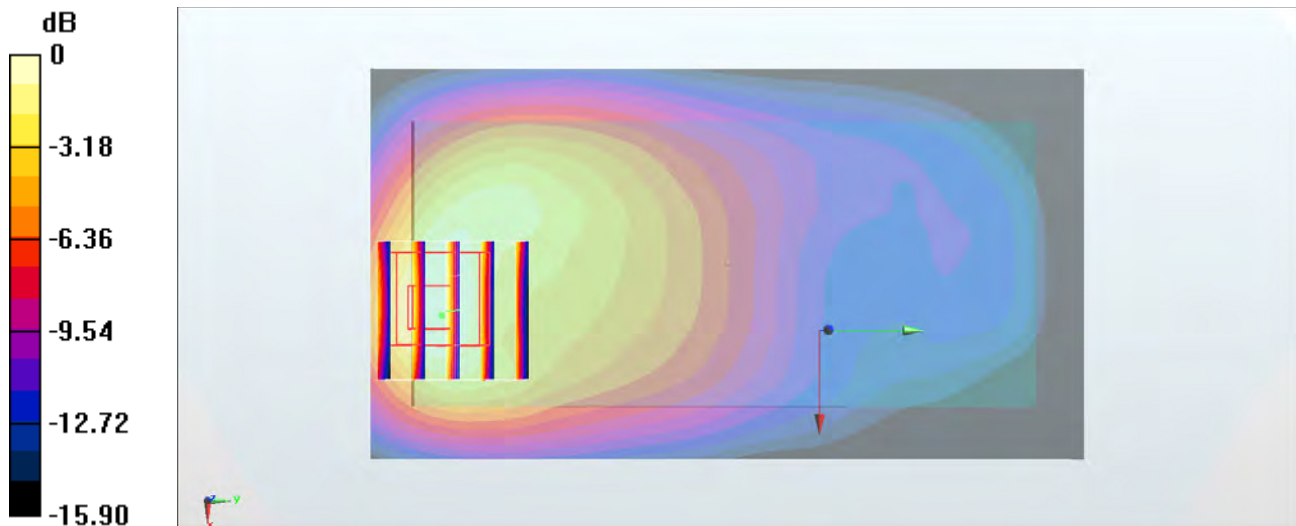
**Configuration/Ch9400/Zoom Scan (5x5x7)/Cube 0:** Measurement grid: dx=8mm, dy=8mm, dz=5mm

Reference Value = 22.36 V/m; Power Drift = 0.01 dB

Peak SAR (extrapolated) = 1.60 W/kg

**SAR(1 g) = 0.922 W/kg; SAR(10 g) = 0.507 W/kg**

Maximum value of SAR (measured) = 1.18 W/kg



0 dB = 1.18 W/kg = 0.72 dBW/kg

### #15\_WCDMA V\_RMC 12.2Kbps\_Back\_10mm\_Ch4233

Communication System: WCDMA ; Frequency: 846.6 MHz; Duty Cycle: 1:1  
 Medium: MSL\_850\_151120 Medium parameters used:  $f = 847$  MHz;  $\sigma = 1.014$  S/m;  $\epsilon_r = 54.85$ ;  $\rho = 1000$  kg/m<sup>3</sup>  
 Ambient Temperature : 23.2 °C; Liquid Temperature : 22.2 °C

**DASY5 Configuration:**

- Probe: ES3DV3 - SN3270; ConvF(6.24, 6.24, 6.24); Calibrated: 2015/9/28;
- Sensor-Surface: 2mm (Mechanical Surface Detection)
- Electronics: DAE4 Sn778; Calibrated: 2015/8/25
- Phantom: SAM-Right; Type: SAM; Serial: 1795
- Measurement SW: DASY52, Version 52.8 (8); SEMCAD X Version 14.6.10 (7331)

**Configuration/Ch4233/Area Scan (61x111x1):** Interpolated grid: dx=1.500 mm, dy=1.500 mm

Maximum value of SAR (interpolated) = 0.605 W/kg

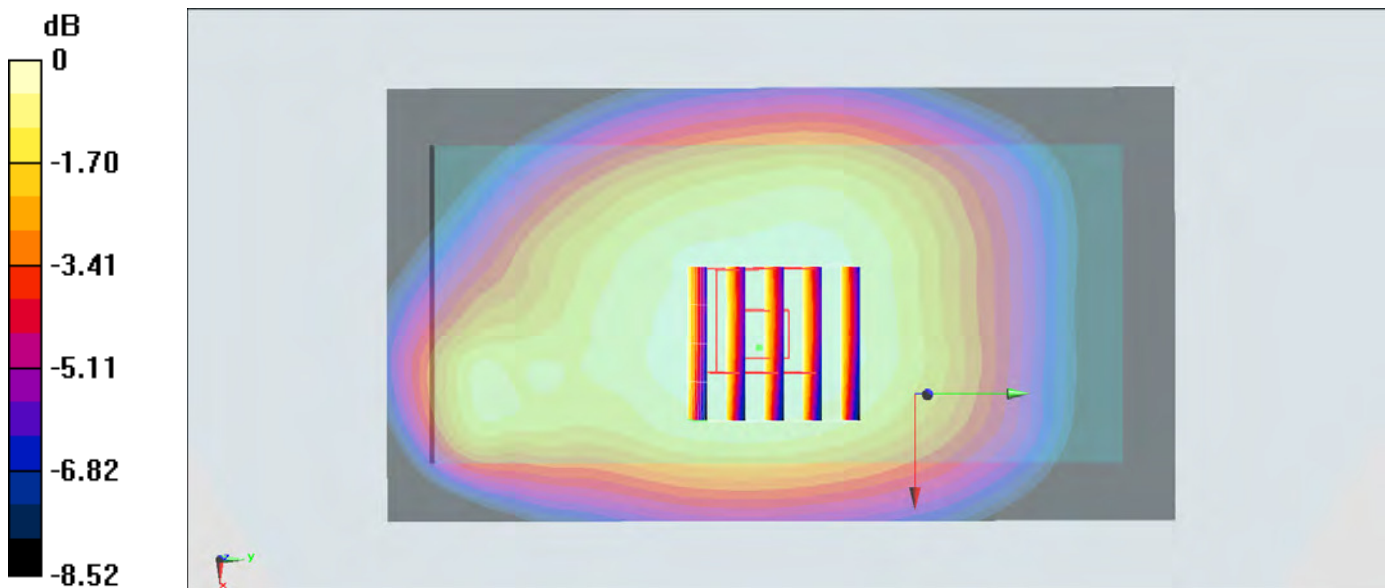
**Configuration/Ch4233/Zoom Scan (5x5x7)/Cube 0:** Measurement grid: dx=8mm, dy=8mm, dz=5mm

Reference Value = 26.89 V/m; Power Drift = -0.12 dB

Peak SAR (extrapolated) = 0.707 W/kg

**SAR(1 g) = 0.505 W/kg; SAR(10 g) = 0.388 W/kg**

Maximum value of SAR (measured) = 0.603 W/kg



0 dB = 0.603 W/kg = -2.20 dBW/kg

## #16\_LTE Band 5\_10M\_QPSK\_1\_0\_Back\_10mm\_Ch20525

Communication System: LTE; Frequency: 836.5 MHz; Duty Cycle: 1:1

Medium: MSL\_850\_151118 Medium parameters used:  $f = 836.5$  MHz;  $\sigma = 0.986$  S/m;  $\epsilon_r = 56.552$ ;  $\rho = 1000$  kg/m<sup>3</sup>

Ambient Temperature : 23.7 °C; Liquid Temperature : 22.7 °C

### DASY5 Configuration:

- Probe: ES3DV3 - SN3270; ConvF(6.24, 6.24, 6.24); Calibrated: 2015/9/28;
- Sensor-Surface: 2mm (Mechanical Surface Detection)
- Electronics: DAE4 Sn778; Calibrated: 2015/8/25
- Phantom: SAM-Right; Type: SAM; Serial: 1795
- Measurement SW: DASY52, Version 52.8 (8); SEMCAD X Version 14.6.10 (7331)

Configuration/Ch20525/Area Scan (61x111x1): Interpolated grid: dx=1.500 mm, dy=1.500 mm

Maximum value of SAR (interpolated) = 0.578 W/kg

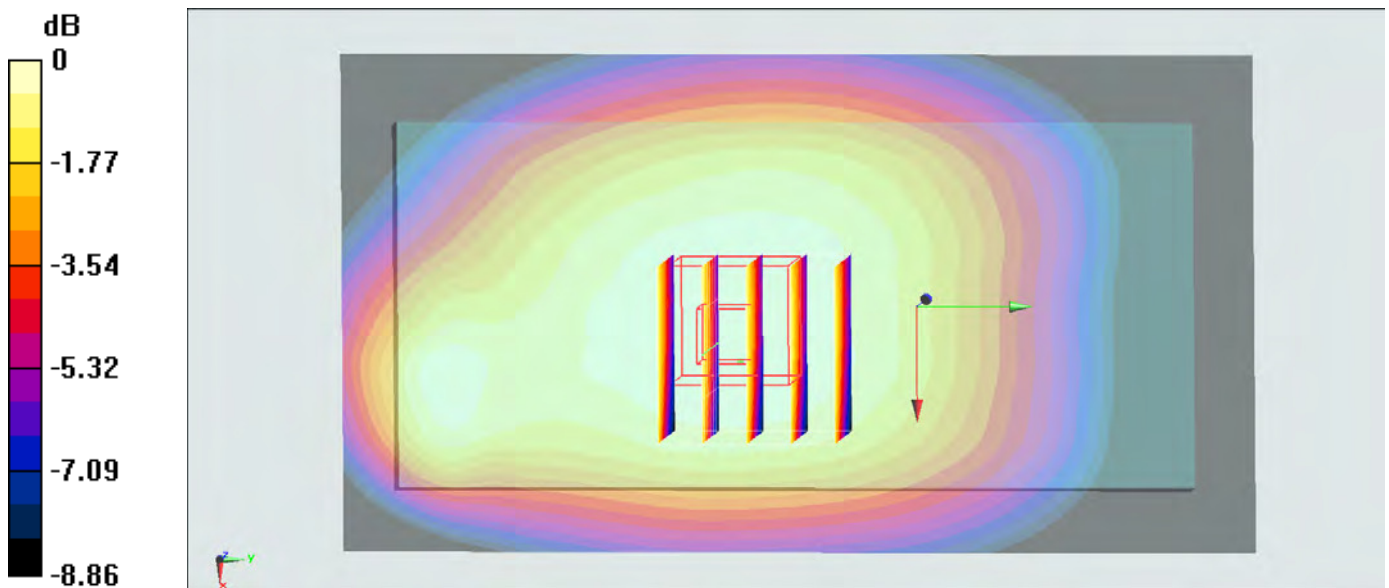
Configuration/Ch20525/Zoom Scan (5x5x7)/Cube 0: Measurement grid: dx=8mm, dy=8mm, dz=5mm

Reference Value = 25.38 V/m; Power Drift = -0.01 dB

Peak SAR (extrapolated) = 0.674 W/kg

SAR(1 g) = 0.483 W/kg; SAR(10 g) = 0.372 W/kg

Maximum value of SAR (measured) = 0.570 W/kg



0 dB = 0.570 W/kg = -2.44 dBW/kg



### #17\_LTE Band 7\_20M\_QPSK\_1\_0\_Back\_10mm\_Ch21350

Communication System: LTE ; Frequency: 2560 MHz;Duty Cycle: 1:1

Medium: MSL\_2600\_151201 Medium parameters used:  $f = 2560$  MHz;  $\sigma = 2.098$  S/m;  $\epsilon_r = 52.297$ ;  $\rho = 1000$  kg/m<sup>3</sup>

Ambient Temperature : 23.6 °C; Liquid Temperature : 22.6 °C

#### DASY5 Configuration

- Probe: ES3DV3 - SN3270; ConvF(4.27, 4.27, 4.27); Calibrated: 2015/9/28;
- Sensor-Surface: 2mm (Mechanical Surface Detection)
- Electronics: DAE4 Sn778; Calibrated: 2015/8/25
- Phantom: SAM\_Right; Type: QD000P40CD; Serial: S/N:1801
- Measurement SW: DASY52, Version 52.8 (8); SEMCAD X Version 14.6.10 (7331)

**Configuration/Ch21350/Area Scan (81x131x1):** Interpolated grid: dx=1.200 mm, dy=1.200 mm

Maximum value of SAR (interpolated) = 1.02 W/kg

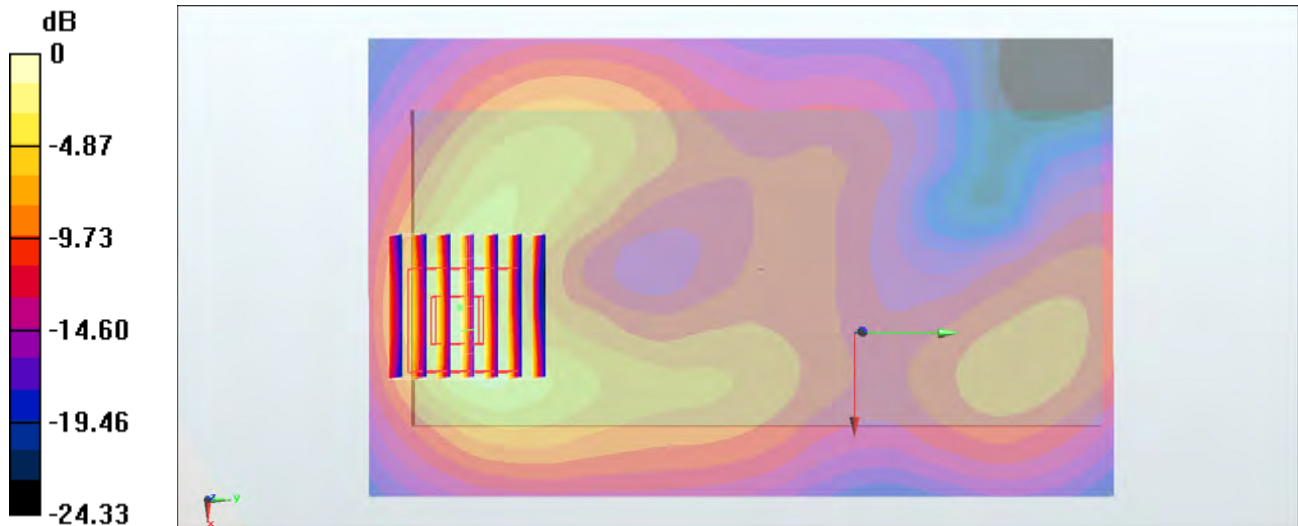
**Configuration/Ch21350/Zoom Scan (7x7x7)/Cube 0:** Measurement grid: dx=5mm, dy=5mm, dz=5mm

Reference Value = 20.79 V/m; Power Drift = 0.13 dB

Peak SAR (extrapolated) = 2.29 W/kg

**SAR(1 g) = 1.06 W/kg; SAR(10 g) = 0.472 W/kg**

Maximum value of SAR (measured) = 1.64 W/kg



0 dB = 1.64 W/kg = 2.15 dBW/kg

### #18\_LTE Band 41\_20M\_QPSK\_1\_0\_Back\_10mm\_Ch40340

Communication System: LTE-TDD ; Frequency: 2565 MHz; Duty Cycle: 1:1.59

Medium: MSL\_2600\_151201 Medium parameters used:  $f = 2565$  MHz;  $\sigma = 2.105$  S/m;  $\epsilon_r = 52.276$ ;  $\rho = 1000$  kg/m<sup>3</sup>

Ambient Temperature : 23.6 °C ; Liquid Temperature : 22.6 °C

#### DASY5 Configuration

- Probe: ES3DV3 - SN3270; ConvF(4.27, 4.27, 4.27); Calibrated: 2015/9/28;
- Sensor-Surface: 2mm (Mechanical Surface Detection)
- Electronics: DAE4 Sn778; Calibrated: 2015/8/25
- Phantom: SAM\_Right; Type: QD000P40CD; Serial: S/N:1801
- Measurement SW: DASY52, Version 52.8 (8); SEMCAD X Version 14.6.10 (7331)

**Configuration/Ch40340/Area Scan (81x141x1):** Interpolated grid: dx=1.200 mm, dy=1.200 mm

Maximum value of SAR (interpolated) = 0.829 W/kg

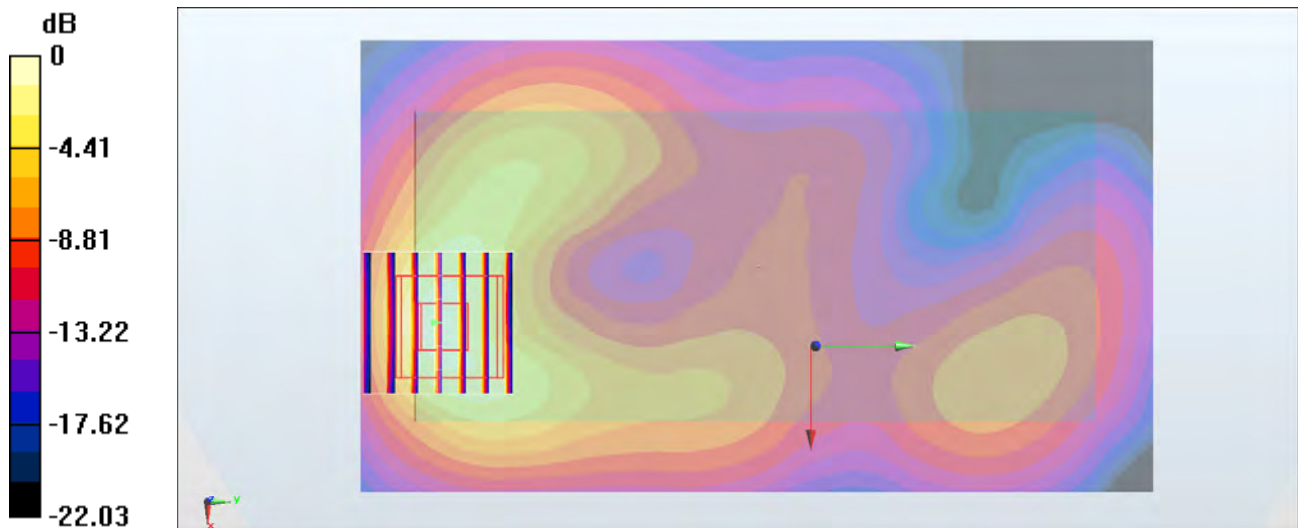
**Configuration/Ch40340/Zoom Scan (7x7x7)/Cube 0:** Measurement grid: dx=5mm, dy=5mm, dz=5mm

Reference Value = 14.35 V/m; Power Drift = -0.12 dB

Peak SAR (extrapolated) = 1.39 W/kg

**SAR(1 g) = 0.641 W/kg; SAR(10 g) = 0.285 W/kg**

Maximum value of SAR (measured) = 0.946 W/kg



0 dB = 0.946 W/kg = -0.24 dBW/kg

## #19\_WLAN2.4GHz\_802.11b 1Mbps\_Top Side\_10mm\_Ch11

Communication System: 802.11b ; Frequency: 2462 MHz;Duty Cycle: 1:1

Medium: MSL\_2450\_151121 Medium parameters used:  $f = 2462$  MHz;  $\sigma = 1.99$  S/m;  $\epsilon_r = 51.223$ ;  $\rho = 1000$  kg/m<sup>3</sup>

Ambient Temperature : 23.2 °C ; Liquid Temperature : 22.2 °C

DASY5 Configuration:

- Probe: ES3DV3 - SN3270; ConvF(4.37, 4.37, 4.37); Calibrated: 2015/9/28;
- Sensor-Surface: 2mm (Mechanical Surface Detection)
- Electronics: DAE4 Sn778; Calibrated: 2015/8/25
- Phantom: SAM\_Left; Type: QD000P40CD; Serial: TP:1644
- Measurement SW: DASY52, Version 52.8 (8);SEMCAD X Version 14.6.10 (7331)

**Configuration/Ch11/Area Scan (51x101x1):** Interpolated grid: dx=1.200 mm, dy=1.200 mm  
Maximum value of SAR (interpolated) = 0.302 W/kg

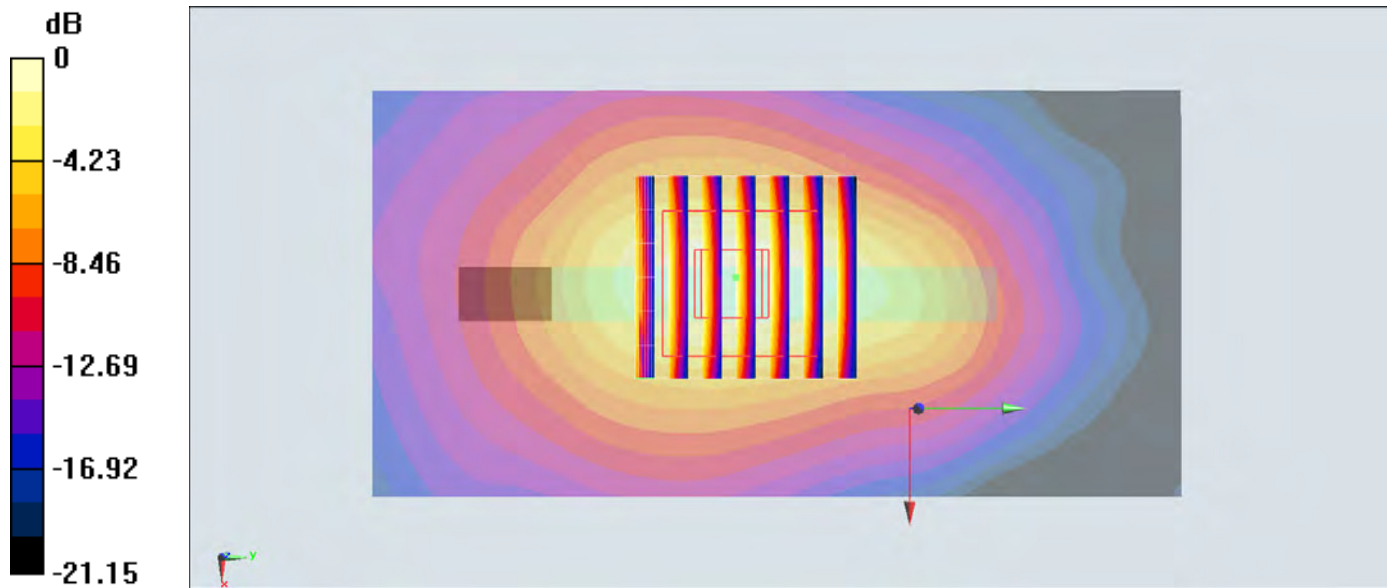
**Configuration/Ch11/Zoom Scan (7x7x7)/Cube 0:** Measurement grid: dx=5mm, dy=5mm, dz=5mm

Reference Value = 13.50 V/m; Power Drift = -0.04 dB

Peak SAR (extrapolated) = 0.425 W/kg

**SAR(1 g) = 0.218 W/kg; SAR(10 g) = 0.109 W/kg**

Maximum value of SAR (measured) = 0.315 W/kg



0 dB = 0.315 W/kg = -5.02 dBW/kg

## #20\_GSM850\_GPRS (4 Tx slots)\_Back\_15mm\_Ch251

Communication System: GSM850 ; Frequency: 848.8 MHz; Duty Cycle: 1:2.08

Medium: MSL\_850\_151120 Medium parameters used:  $f = 849$  MHz;  $\sigma = 1.016$  S/m;  $\epsilon_r = 54.828$ ;  $\rho = 1000$  kg/m<sup>3</sup>

Ambient Temperature : 23.2 °C ; Liquid Temperature : 22.2 °C

DASY5 Configuration:

- Probe: ES3DV3 - SN3270; ConvF(6.24, 6.24, 6.24); Calibrated: 2015/9/28;
- Sensor-Surface: 2mm (Mechanical Surface Detection)
- Electronics: DAE4 Sn778; Calibrated: 2015/8/25
- Phantom: SAM-Right; Type: SAM; Serial: 1795
- Measurement SW: DASY52, Version 52.8 (8); SEMCAD X Version 14.6.10 (7331)

**Configuration/Ch251/Area Scan (61x111x1):** Interpolated grid: dx=1.500 mm, dy=1.500 mm  
 Maximum value of SAR (interpolated) = 0.648 W/kg

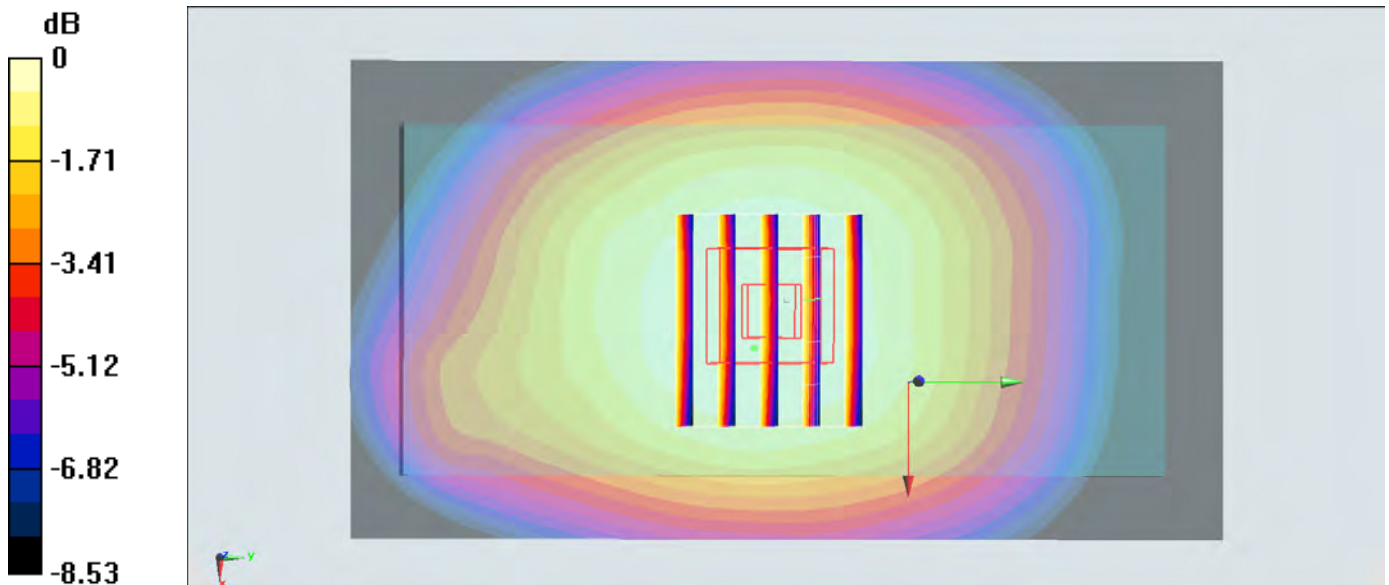
**Configuration/Ch251/Zoom Scan (6x5x7)/Cube 0:** Measurement grid: dx=8mm, dy=8mm, dz=5mm

Reference Value = 22.33 V/m; Power Drift = -0.00 dB

Peak SAR (extrapolated) = 0.745 W/kg

**SAR(1 g) = 0.539 W/kg; SAR(10 g) = 0.412 W/kg**

Maximum value of SAR (measured) = 0.634 W/kg



0 dB = 0.634 W/kg = -1.98 dBW/kg

## #21\_GSM1900\_GPRS (4 Tx slots)\_Back\_15mm\_Ch810

Communication System: PCS ; Frequency: 1909.8 MHz; Duty Cycle: 1:2.08

Medium: MSL\_1900\_151117 Medium parameters used:  $f = 1910$  MHz;  $\sigma = 1.565$  S/m;  $\epsilon_r = 51.517$ ;  $\rho = 1000$  kg/m<sup>3</sup>

Ambient Temperature : 23.7 °C ; Liquid Temperature : 22.7 °C

DASY5 Configuration:

- Probe: ES3DV3 - SN3270; ConvF(4.78, 4.78, 4.78); Calibrated: 2015/9/28;
- Sensor-Surface: 2mm (Mechanical Surface Detection)
- Electronics: DAE4 Sn778; Calibrated: 2015/8/25
- Phantom: SAM\_Left; Type: QD000P40CD; Serial: TP:1644
- Measurement SW: DASY52, Version 52.8 (8); SEMCAD X Version 14.6.10 (7331)

**Configuration/Ch810/Area Scan (61x111x1):** Interpolated grid: dx=1.500 mm, dy=1.500 mm  
 Maximum value of SAR (interpolated) = 0.521 W/kg

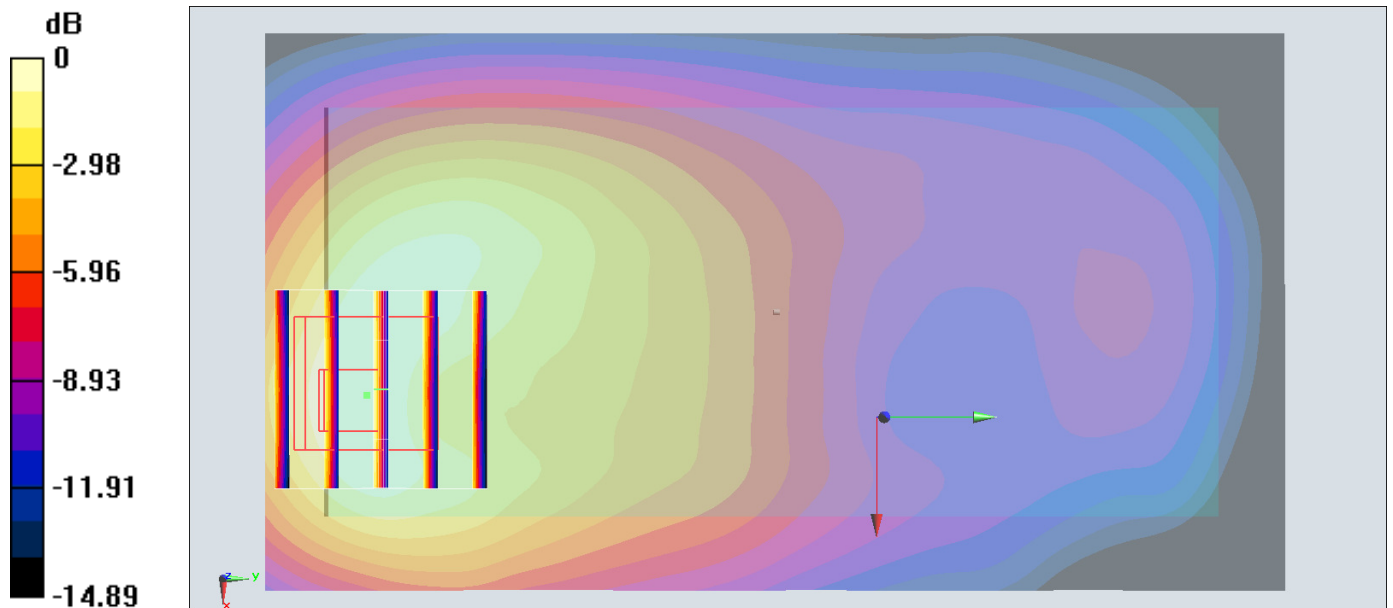
**Configuration/Ch810/Zoom Scan (5x5x7)/Cube 0:** Measurement grid: dx=8mm, dy=8mm, dz=5mm

Reference Value = 18.02 V/m; Power Drift = 0.01 dB

Peak SAR (extrapolated) = 0.634 W/kg

**SAR(1 g) = 0.381 W/kg; SAR(10 g) = 0.223 W/kg**

Maximum value of SAR (measured) = 0.488 W/kg



0 dB = 0.488 W/kg = -3.12 dBW/kg

## #22\_WCDMA II\_RMC 12.2Kbps\_Back\_15mm\_Ch9538

Communication System: WCDMA ; Frequency: 1907.6 MHz; Duty Cycle: 1:1

Medium: MSL\_1900\_151202 Medium parameters used:  $f = 1908 \text{ MHz}$ ;  $\sigma = 1.583 \text{ S/m}$ ;  $\epsilon_r = 54.664$ ;  $\rho = 1000 \text{ kg/m}^3$

Ambient Temperature :  $23.6 \text{ }^\circ\text{C}$ ; Liquid Temperature :  $22.6 \text{ }^\circ\text{C}$

### DASY5 Configuration

- Probe: ES3DV3 - SN3270; ConvF(4.78, 4.78, 4.78); Calibrated: 2015/9/28;
- Sensor-Surface: 2mm (Mechanical Surface Detection)
- Electronics: DAE4 Sn778; Calibrated: 2015/8/25
- Phantom: SAM\_Left; Type: QD000P40CD; Serial: S/N:1796
- Measurement SW: DASY52, Version 52.8 (8); SEMCAD X Version 14.6.10 (7331)

**Configuration/Ch9538/Area Scan (61x111x1):** Interpolated grid:  $dx=1.500 \text{ mm}$ ,  $dy=1.500 \text{ mm}$

Maximum value of SAR (interpolated) =  $0.932 \text{ W/kg}$

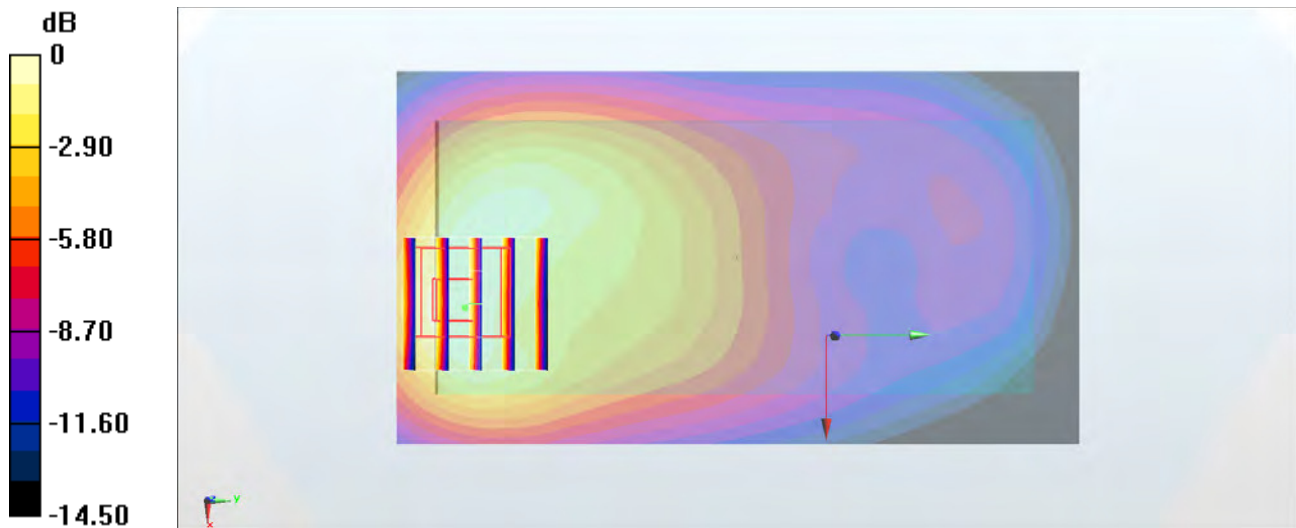
**Configuration/Ch9538/Zoom Scan (5x5x7)/Cube 0:** Measurement grid:  $dx=8\text{mm}$ ,  $dy=8\text{mm}$ ,  $dz=5\text{mm}$

Reference Value =  $23.15 \text{ V/m}$ ; Power Drift =  $-0.02 \text{ dB}$

Peak SAR (extrapolated) =  $1.14 \text{ W/kg}$

**SAR(1 g) =  $0.688 \text{ W/kg}$ ; SAR(10 g) =  $0.411 \text{ W/kg}$**

Maximum value of SAR (measured) =  $0.869 \text{ W/kg}$



0 dB =  $0.869 \text{ W/kg}$  =  $-0.61 \text{ dBW/kg}$

### #23\_WCDMA V\_RMC 12.2Kbps\_Back\_15mm\_Ch4233

Communication System: WCDMA ; Frequency: 846.6 MHz; Duty Cycle: 1:1

Medium: MSL\_850\_151120 Medium parameters used:  $f = 847$  MHz;  $\sigma = 1.014$  S/m;  $\epsilon_r = 54.85$ ;  $\rho = 1000$  kg/m<sup>3</sup>

Ambient Temperature : 23.2 °C ; Liquid Temperature : 22.2 °C

DASY5 Configuration:

- Probe: ES3DV3 - SN3270; ConvF(6.24, 6.24, 6.24); Calibrated: 2015/9/28;
- Sensor-Surface: 2mm (Mechanical Surface Detection)
- Electronics: DAE4 Sn778; Calibrated: 2015/8/25
- Phantom: SAM-Right; Type: SAM; Serial: 1795
- Measurement SW: DASY52, Version 52.8 (8); SEMCAD X Version 14.6.10 (7331)

**Configuration/Ch4233/Area Scan (61x111x1):** Interpolated grid: dx=1.500 mm, dy=1.500 mm

Maximum value of SAR (interpolated) = 0.556 W/kg

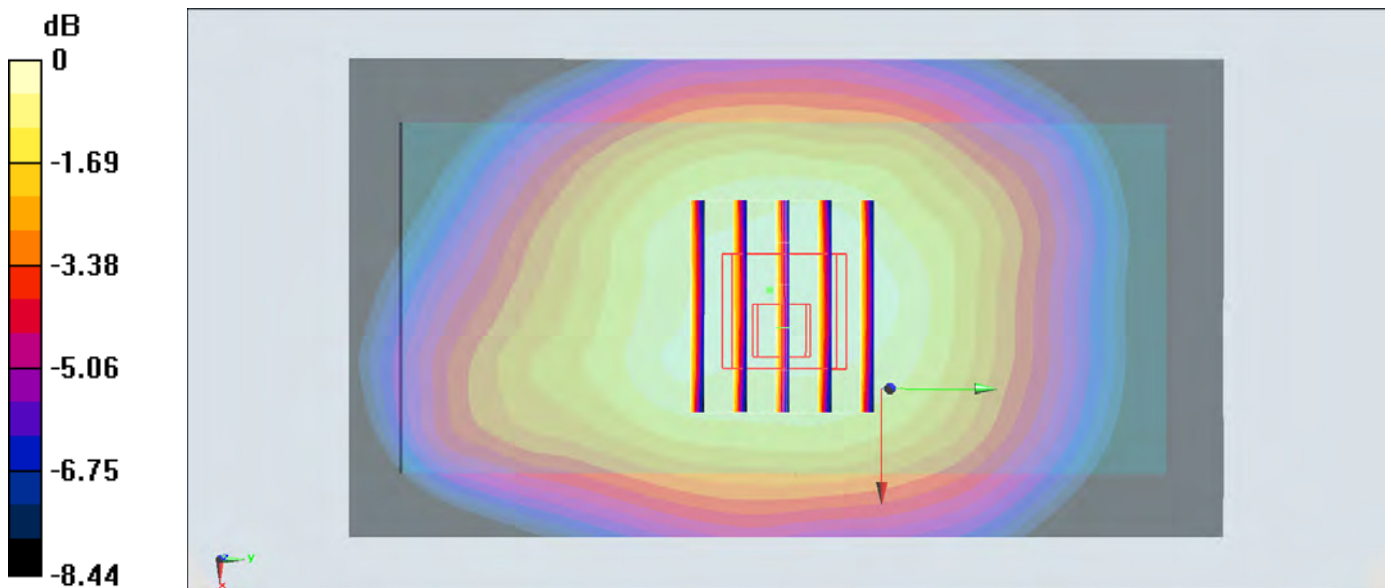
**Configuration/Ch4233/Zoom Scan (6x5x7)/Cube 0:** Measurement grid: dx=8mm, dy=8mm, dz=5mm

Reference Value = 24.49 V/m; Power Drift = -0.10 dB

Peak SAR (extrapolated) = 0.671 W/kg

**SAR(1 g) = 0.463 W/kg; SAR(10 g) = 0.346 W/kg**

Maximum value of SAR (measured) = 0.562 W/kg



0 dB = 0.562 W/kg = -2.50 dBW/kg

## #24\_LTE Band 5\_10M\_QPSK\_1\_0\_Back\_15mm\_Ch20525

Communication System: LTE; Frequency: 836.5 MHz; Duty Cycle: 1:1

Medium: MSL\_850\_151118 Medium parameters used:  $f = 836.5$  MHz;  $\sigma = 0.986$  S/m;  $\epsilon_r = 56.552$ ;  $\rho = 1000$  kg/m<sup>3</sup>

Ambient Temperature : 23.7 °C; Liquid Temperature : 22.7 °C

DASY5 Configuration:

- Probe: ES3DV3 - SN3270; ConvF(6.24, 6.24, 6.24); Calibrated: 2015/9/28;
- Sensor-Surface: 2mm (Mechanical Surface Detection)
- Electronics: DAE4 Sn778; Calibrated: 2015/8/25
- Phantom: SAM-Right; Type: SAM; Serial: 1795
- Measurement SW: DASY52, Version 52.8 (8); SEMCAD X Version 14.6.10 (7331)

**Configuration/Ch20525/Area Scan (61x111x1):** Interpolated grid: dx=1.500 mm, dy=1.500 mm

Maximum value of SAR (interpolated) = 0.475 W/kg

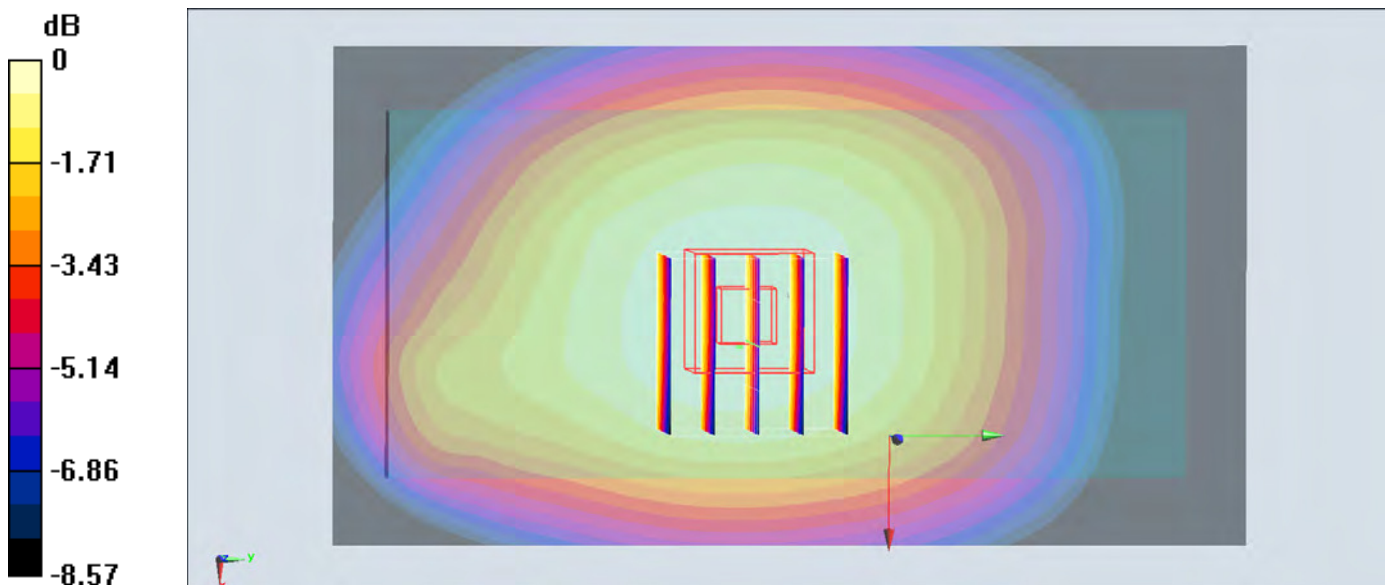
**Configuration/Ch20525/Zoom Scan (5x5x7)/Cube 0:** Measurement grid: dx=8mm, dy=8mm, dz=5mm

Reference Value = 23.30 V/m; Power Drift = 0.00 dB

Peak SAR (extrapolated) = 0.555 W/kg

**SAR(1 g) = 0.401 W/kg; SAR(10 g) = 0.307 W/kg**

Maximum value of SAR (measured) = 0.474 W/kg



0 dB = 0.474 W/kg = -3.24 dBW/kg



### #25\_LTE Band 7\_20M\_QPSK\_1\_0\_Back\_15mm\_Ch21100

Communication System: LTE ; Frequency: 2535 MHz; Duty Cycle: 1:1

Medium: MSL\_2600\_151201 Medium parameters used:  $f = 2535$  MHz;  $\sigma = 2.066$  S/m;  $\epsilon_r = 52.386$ ;  $\rho = 1000$  kg/m<sup>3</sup>

Ambient Temperature : 23.6 °C ; Liquid Temperature : 22.6 °C

#### DASY5 Configuration

- Probe: ES3DV3 - SN3270; ConvF(4.27, 4.27, 4.27); Calibrated: 2015/9/28;
- Sensor-Surface: 2mm (Mechanical Surface Detection)
- Electronics: DAE4 Sn778; Calibrated: 2015/8/25
- Phantom: SAM\_Right; Type: QD000P40CD; Serial: S/N:1801
- Measurement SW: DASY52, Version 52.8 (8); SEMCAD X Version 14.6.10 (7331)

**Configuration/Ch21100/Area Scan (81x141x1):** Interpolated grid: dx=1.200 mm, dy=1.200 mm

Maximum value of SAR (interpolated) = 0.652 W/kg

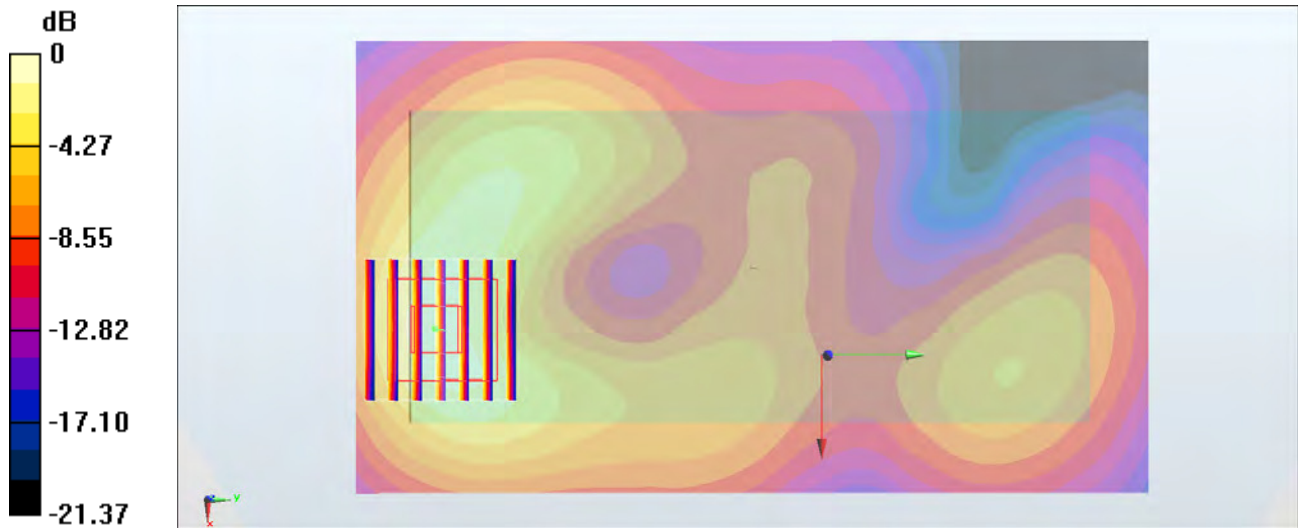
**Configuration/Ch21100/Zoom Scan (7x7x7)/Cube 0:** Measurement grid: dx=5mm, dy=5mm, dz=5mm

Reference Value = 14.64 V/m; Power Drift = -0.16 dB

Peak SAR (extrapolated) = 0.973 W/kg

**SAR(1 g) = 0.494 W/kg; SAR(10 g) = 0.248 W/kg**

Maximum value of SAR (measured) = 0.728 W/kg



0 dB = 0.728 W/kg = -1.38 dBW/kg

## #26\_LTE Band 41\_20M\_QPSK\_1\_0\_Back\_15mm\_Ch40740

Communication System: LTE; Frequency: 2605 MHz; Duty Cycle: 1:1.59

Medium: MSL\_2600\_151201 Medium parameters used:  $f = 2605$  MHz;  $\sigma = 2.16$  S/m;  $\epsilon_r = 52.126$ ;  $\rho = 1000$  kg/m<sup>3</sup>

Ambient Temperature : 23.6 °C; Liquid Temperature : 22.6 °C

### DASY5 Configuration

- Probe: ES3DV3 - SN3270; ConvF(4.27, 4.27, 4.27); Calibrated: 2015/9/28;
- Sensor-Surface: 2mm (Mechanical Surface Detection)
- Electronics: DAE4 Sn778; Calibrated: 2015/8/25
- Phantom: SAM\_Right; Type: QD000P40CD; Serial: S/N:1801
- Measurement SW: DASY52, Version 52.8 (8); SEMCAD X Version 14.6.10 (7331)

**Configuration/Ch40740/Area Scan (81x141x1):** Interpolated grid: dx=1.200 mm, dy=1.200 mm

Maximum value of SAR (interpolated) = 0.383 W/kg

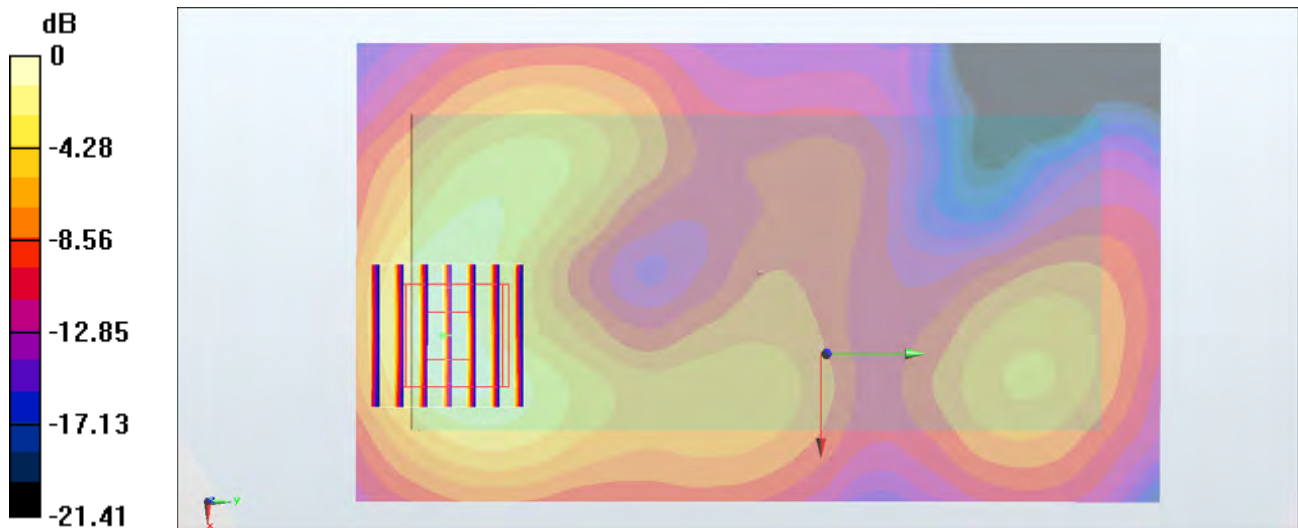
**Configuration/Ch40740/Zoom Scan (7x7x7)/Cube 0:** Measurement grid: dx=5mm, dy=5mm, dz=5mm

Reference Value = 12.33 V/m; Power Drift = -0.10 dB

Peak SAR (extrapolated) = 0.586 W/kg

**SAR(1 g) = 0.291 W/kg; SAR(10 g) = 0.145 W/kg**

Maximum value of SAR (measured) = 0.429 W/kg



0 dB = 0.429 W/kg = -3.68 dBW/kg

## #27\_WLAN2.4GHz\_802.11b 1Mbps\_Back\_15mm\_Ch6

Communication System: 802.11b; Frequency: 2437 MHz; Duty Cycle: 1:1

Medium: MSL\_2450\_151121 Medium parameters used:  $f = 2437$  MHz;  $\sigma = 1.957$  S/m;  $\epsilon_r = 51.327$ ;  $\rho = 1000$  kg/m<sup>3</sup>

Ambient Temperature : 23.2 °C; Liquid Temperature : 22.2 °C

DASY5 Configuration:

- Probe: ES3DV3 - SN3270; ConvF(4.37, 4.37, 4.37); Calibrated: 2015/9/28;
- Sensor-Surface: 2mm (Mechanical Surface Detection)
- Electronics: DAE4 Sn778; Calibrated: 2015/8/25
- Phantom: SAM\_Left; Type: QD000P40CD; Serial: TP:1644
- Measurement SW: DASY52, Version 52.8 (8); SEMCAD X Version 14.6.10 (7331)

**Configuration/Ch6/Area Scan (81x141x1):** Interpolated grid: dx=1.200 mm, dy=1.200 mm  
 Maximum value of SAR (interpolated) = 0.114 W/kg

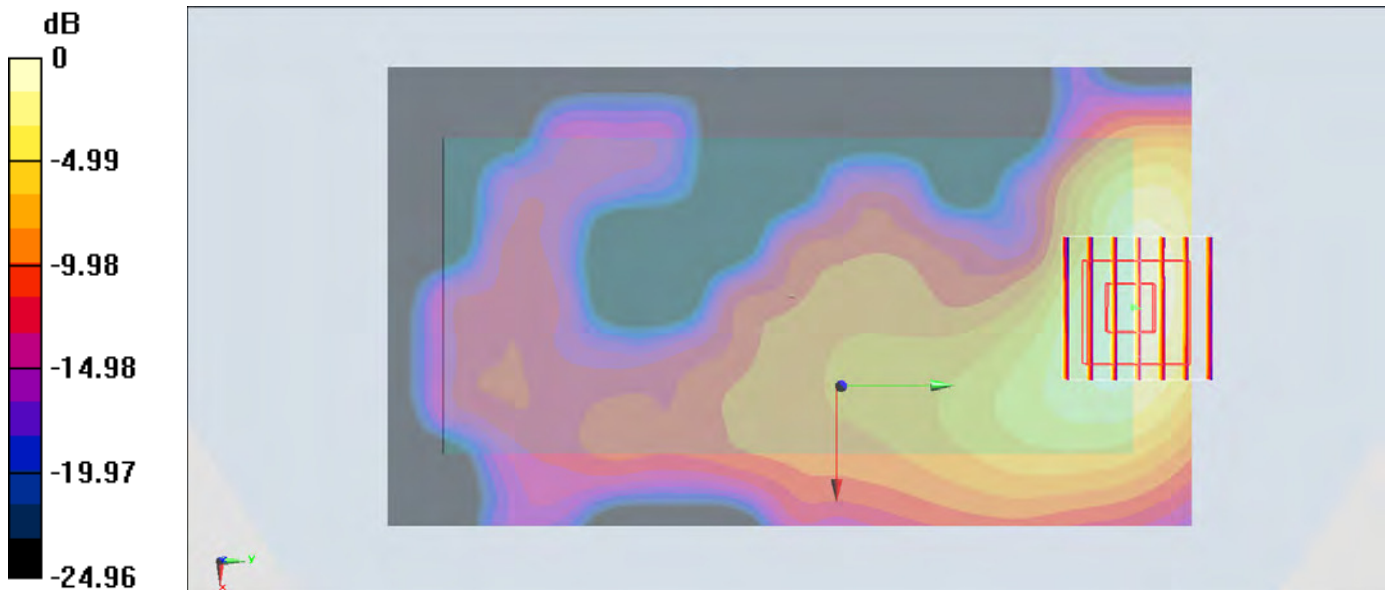
**Configuration/Ch6/Zoom Scan (7x7x7)/Cube 0:** Measurement grid: dx=5mm, dy=5mm, dz=5mm

Reference Value = 6.761 V/m; Power Drift = 0.03 dB

Peak SAR (extrapolated) = 0.156 W/kg

**SAR(1 g) = 0.082 W/kg; SAR(10 g) = 0.043 W/kg**

Maximum value of SAR (measured) = 0.116 W/kg



0 dB = 0.116 W/kg = -9.36 dBW/kg

## #28\_WLAN5GHz\_802.11a\_6Mbps\_Back\_15mm\_Ch56

Communication System: 802.11a; Frequency: 5280 MHz; Duty Cycle: 1:1.029

Medium: MSL\_5G\_151121 Medium parameters used:  $f = 5280$  MHz;  $\sigma = 5.567$  S/m;  $\epsilon_r = 46.865$ ;  $\rho = 1000$  kg/m<sup>3</sup>

Ambient Temperature : 23.3 °C; Liquid Temperature : 22.3 °C

### DASY5 Configuration:

- Probe: EX3DV4 - SN3931; ConvF(4.48, 4.48, 4.48); Calibrated: 2015/10/1;
- Sensor-Surface: 1.4mm (Mechanical Surface Detection)
- Electronics: DAE3 Sn577; Calibrated: 2015/9/24
- Phantom: SAM-Right; Type: SAM; Serial: 1795
- Measurement SW: DASY52, Version 52.8 (8); SEMCAD X Version 14.6.10 (7331)

**Configuration/Ch56/Area Scan (101x181x1):** Interpolated grid: dx=1.000 mm, dy=1.000 mm

Maximum value of SAR (interpolated) = 0.163 W/kg

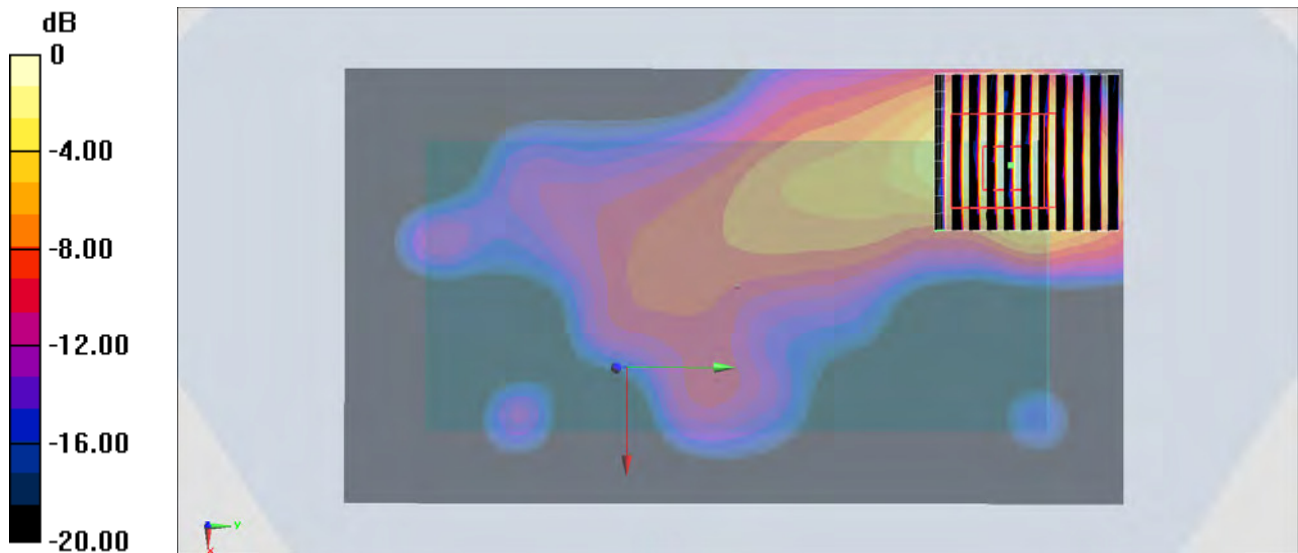
**Configuration/Ch56/Zoom Scan (10x11x7)/Cube 0:** Measurement grid: dx=4mm, dy=4mm, dz=1.4mm

Reference Value = 4.944 V/m; Power Drift = 0.16 dB

Peak SAR (extrapolated) = 0.246 W/kg

**SAR(1 g) = 0.065 W/kg; SAR(10 g) = 0.022 W/kg**

Maximum value of SAR (measured) = 0.160 W/kg



0 dB = 0.160 W/kg = -7.96 dBW/kg

## #29\_WLAN5GHz\_802.11a\_6Mbps\_Back\_15mm\_Ch140

Communication System: 802.11a; Frequency: 5700 MHz; Duty Cycle: 1:1.029

Medium: MSL\_5G\_151121 Medium parameters used:  $f = 5700$  MHz;  $\sigma = 6.117$  S/m;  $\epsilon_r = 46.102$ ;  $\rho = 1000$  kg/m<sup>3</sup>

Ambient Temperature : 23.3 °C; Liquid Temperature : 22.3 °C

DASY5 Configuration:

- Probe: EX3DV4 - SN3931; ConvF(3.84, 3.84, 3.84); Calibrated: 2015/10/1;
- Sensor-Surface: 1.4mm (Mechanical Surface Detection)
- Electronics: DAE3 Sn577; Calibrated: 2015/9/24
- Phantom: SAM-Right; Type: SAM; Serial: 1795
- Measurement SW: DASY52, Version 52.8 (8); SEMCAD X Version 14.6.10 (7331)

**Configuration/Ch140/Area Scan (101x181x1):** Interpolated grid: dx=1.000 mm, dy=1.000 mm  
 Maximum value of SAR (interpolated) = 0.246 W/kg

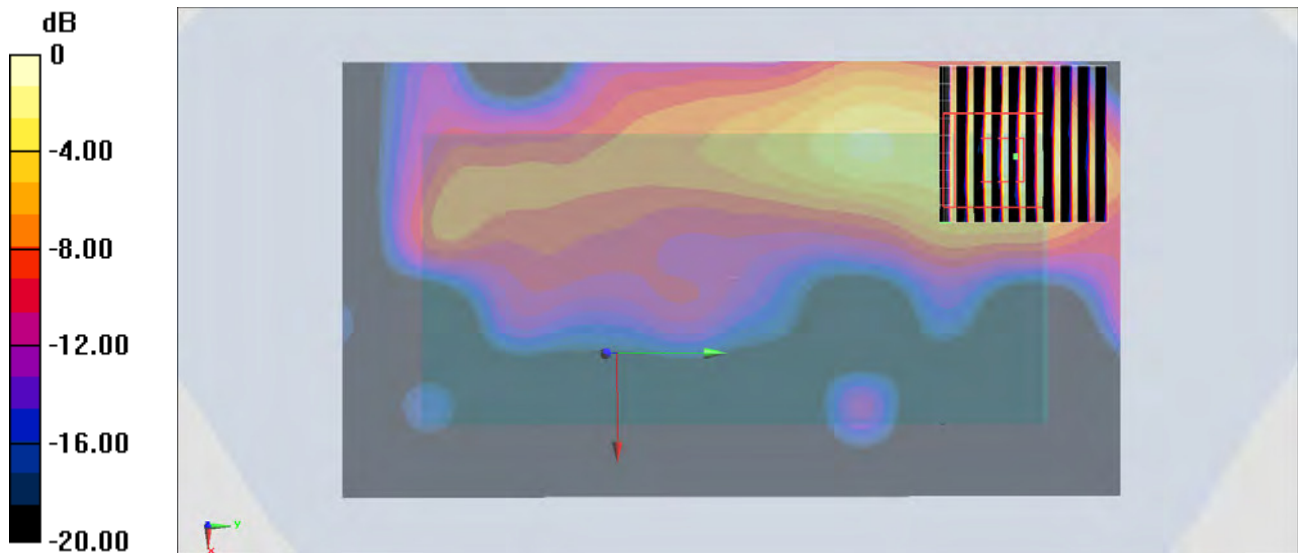
**Configuration/Ch140/Zoom Scan (10x10x7)/Cube 0:** Measurement grid: dx=4mm, dy=4mm, dz=1.4mm

Reference Value = 5.301 V/m; Power Drift = -0.19 dB

Peak SAR (extrapolated) = 0.471 W/kg

**SAR(1 g) = 0.116 W/kg; SAR(10 g) = 0.038 W/kg**

Maximum value of SAR (measured) = 0.289 W/kg



0 dB = 0.289 W/kg = -5.39 dBW/kg

### #30\_WLAN5GHz\_802.11a\_6Mbps\_Back\_15mm\_Ch157

Communication System: 802.11a; Frequency: 5785 MHz; Duty Cycle: 1:1.029

Medium: MSL\_5G\_151121 Medium parameters used:  $f = 5785$  MHz;  $\sigma = 6.229$  S/m;  $\epsilon_r = 45.968$ ;  $\rho = 1000$  kg/m<sup>3</sup>

Ambient Temperature : 23.3 °C; Liquid Temperature : 22.3 °C

#### DASY5 Configuration:

- Probe: EX3DV4 - SN3931; ConvF(3.98, 3.98, 3.98); Calibrated: 2015/10/1;
- Sensor-Surface: 1.4mm (Mechanical Surface Detection)
- Electronics: DAE3 Sn577; Calibrated: 2015/9/24
- Phantom: SAM-Right; Type: SAM; Serial: 1795
- Measurement SW: DASY52, Version 52.8 (8); SEMCAD X Version 14.6.10 (7331)

**Configuration/Ch157/Area Scan (101x181x1):** Interpolated grid: dx=1.000 mm, dy=1.000 mm

Maximum value of SAR (interpolated) = 0.160 W/kg

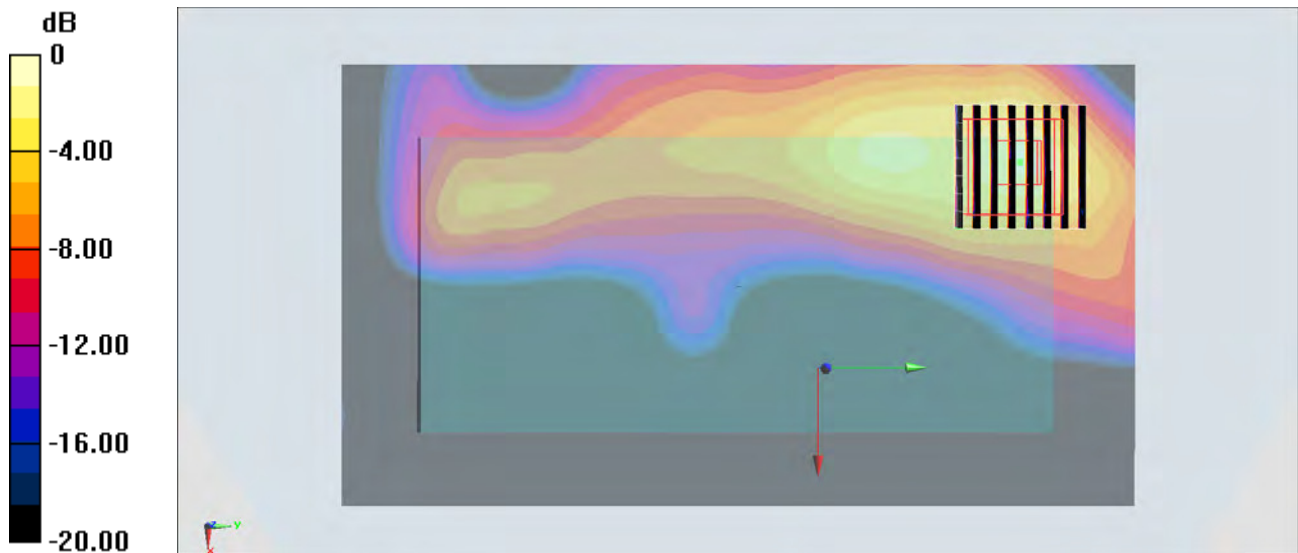
**Configuration/Ch157/Zoom Scan (8x8x7)/Cube 0:** Measurement grid: dx=4mm, dy=4mm, dz=1.4mm

Reference Value = 4.555 V/m; Power Drift = -0.10 dB

Peak SAR (extrapolated) = 0.297 W/kg

**SAR(1 g) = 0.070 W/kg; SAR(10 g) = 0.023 W/kg**

Maximum value of SAR (measured) = 0.200 W/kg



0 dB = 0.200 W/kg = -6.99 dBW/kg