

#01_GSM850_GPRS (4 Tx slots)_Right Cheek_Ch251

Communication System: GSM850 ; Frequency: 848.8 MHz; Duty Cycle: 1:2.08

Medium: HSL_850_141216 Medium parameters used: $f = 849$ MHz; $\sigma = 0.936$ S/m; $\epsilon_r = 41.609$; $\rho = 1000$ kg/m³

Ambient Temperature : 23.3 °C; Liquid Temperature : 22.3 °C

DASY5 Configuration

- Probe: EX3DV4 - SN3954; ConvF(10.33, 10.33, 10.33); Calibrated: 2014/11/21;
- Sensor-Surface: 1.4mm (Mechanical Surface Detection)
- Electronics: DAE4 Sn1279; Calibrated: 2014/7/23
- Phantom: SAM LEFT; Type: QD000P40CD; Serial: TP:1718
- Measurement SW: DASY52, Version 52.8 (7); SEMCAD X Version 14.6.10 (7164)

Configuration/Ch251/Area Scan (61x111x1): Interpolated grid: dx=1.500 mm, dy=1.500 mm
 Maximum value of SAR (interpolated) = 0.838 W/kg

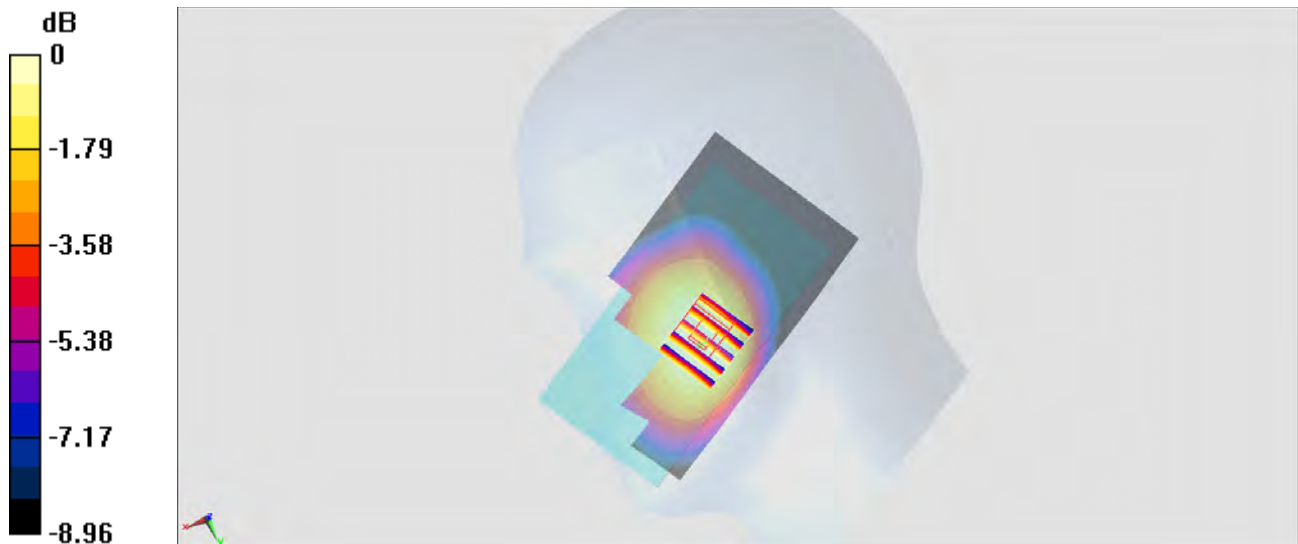
Configuration/Ch251/Zoom Scan (5x5x7)/Cube 0: Measurement grid: dx=8mm, dy=8mm, dz=5mm

Reference Value = 29.621 V/m; Power Drift = 0.02 dB

Peak SAR (extrapolated) = 0.883 W/kg

SAR(1 g) = 0.709 W/kg; SAR(10 g) = 0.550 W/kg

Maximum value of SAR (measured) = 0.799 W/kg



0 dB = 0.799 W/kg = -0.97 dBW/kg

#02_GSM1900_GPRS (4 Tx slots)_Left Cheek_Ch512

Communication System: PCS ; Frequency: 1850.2 MHz; Duty Cycle: 1:2.08

Medium: HSL_1900_150215 Medium parameters used : $f = 1850.2$ MHz; $\sigma = 1.406$ S/m; $\epsilon_r = 39.06$; $\rho = 1000$ kg/m³

Ambient Temperature : 23.4 °C; Liquid Temperature : 22.4 °C

DASY5 Configuration:

- Probe: EX3DV4 - SN3954; ConvF(8.1, 8.1, 8.1); Calibrated: 2014/11/21;
- Sensor-Surface: 1.4mm (Mechanical Surface Detection)
- Electronics: DAE4 Sn1279; Calibrated: 2014/7/23
- Phantom: SAM-Right; Type: QD 000 P40 C; Serial: TP-1446
- Measurement SW: DASY52, Version 52.8 (8); SEMCAD X Version 14.6.10 (7331)

Configuration/Ch512/Area Scan (61x111x1): Interpolated grid: dx=1.500 mm, dy=1.500 mm
Maximum value of SAR (interpolated) = 1.11 W/kg

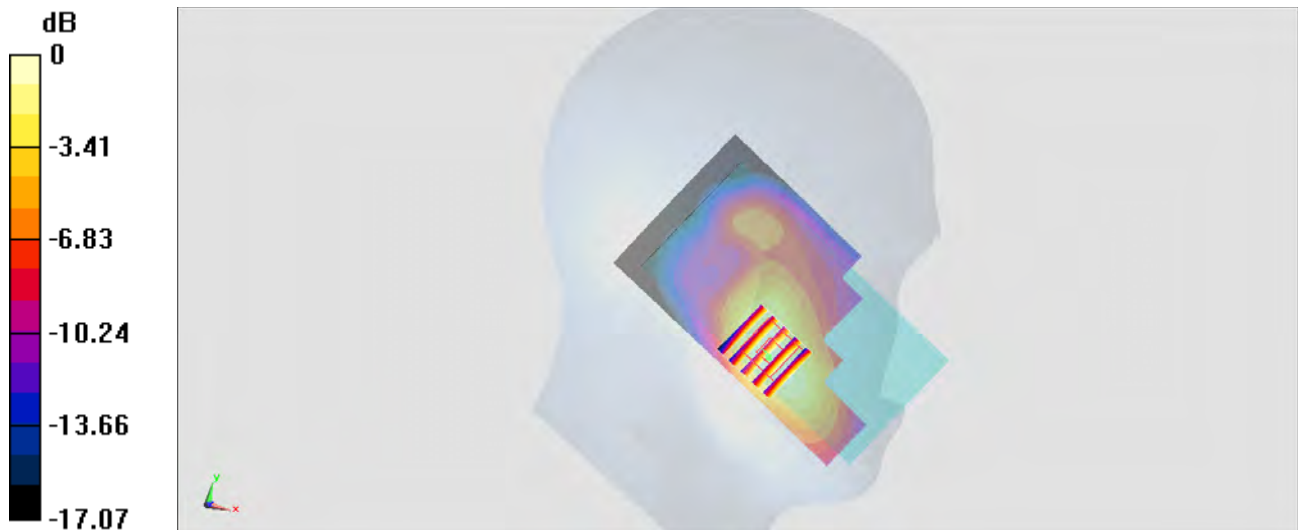
Configuration/Ch512/Zoom Scan (5x5x7)/Cube 0: Measurement grid: dx=8mm, dy=8mm, dz=5mm

Reference Value = 28.75 V/m; Power Drift = -0.03 dB

Peak SAR (extrapolated) = 1.23 W/kg

SAR(1 g) = 0.783 W/kg; SAR(10 g) = 0.487 W/kg

Maximum value of SAR (measured) = 1.08 W/kg



0 dB = 1.08 W/kg = 0.33 dBW/kg

#03_WCDMA V_RMC 12.2Kbps_Right Cheek_Ch4233

Communication System: WCDMA ; Frequency: 846.6 MHz; Duty Cycle: 1:1

Medium: HSL_850_141216 Medium parameters used: $f = 847$ MHz; $\sigma = 0.935$ S/m; $\epsilon_r = 41.64$; $\rho = 1000$ kg/m³

Ambient Temperature : 23.3 °C ; Liquid Temperature : 22.3 °C

DASY5 Configuration

- Probe: EX3DV4 - SN3954; ConvF(10.33, 10.33, 10.33); Calibrated: 2014/11/21;
- Sensor-Surface: 1.4mm (Mechanical Surface Detection)
- Electronics: DAE4 Sn1279; Calibrated: 2014/7/23
- Phantom: SAM LEFT; Type: QD000P40CD; Serial: TP:1718
- Measurement SW: DASY52, Version 52.8 (7); SEMCAD X Version 14.6.10 (7164)

Configuration/Ch4233/Area Scan (61x111x1): Interpolated grid: dx=1.500 mm, dy=1.500 mm
 Maximum value of SAR (interpolated) = 0.676 W/kg

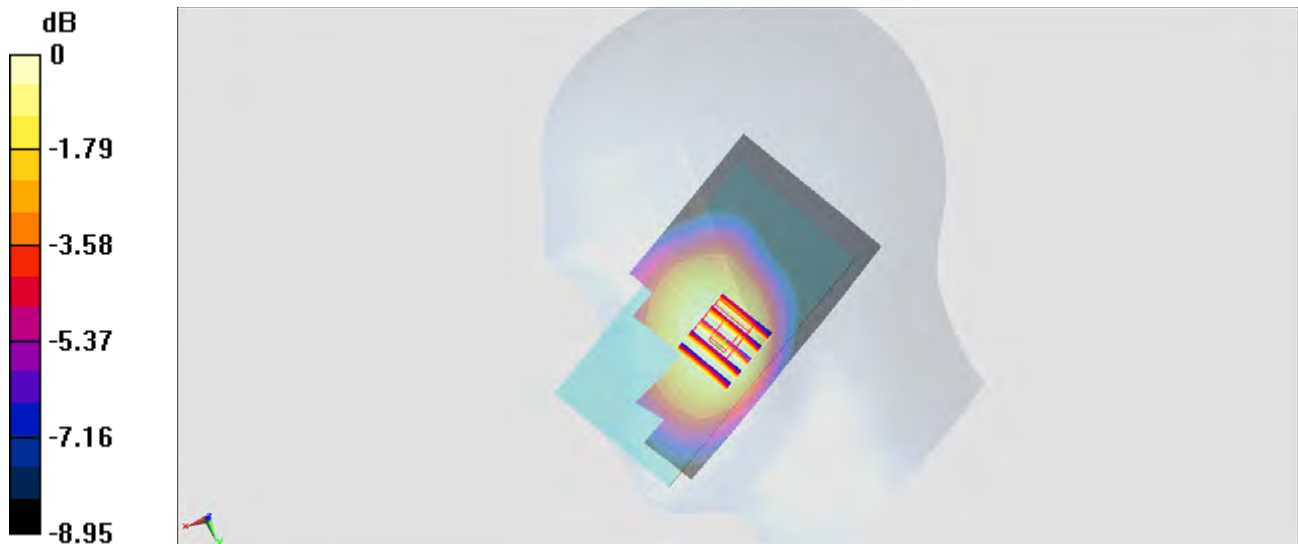
Configuration/Ch4233/Zoom Scan (5x5x7)/Cube 0: Measurement grid: dx=8mm, dy=8mm, dz=5mm

Reference Value = 26.527 V/m; Power Drift = 0.11 dB

Peak SAR (extrapolated) = 0.720 W/kg

SAR(1 g) = 0.575 W/kg; SAR(10 g) = 0.445 W/kg

Maximum value of SAR (measured) = 0.649 W/kg



0 dB = 0.649 W/kg = -1.88 dBW/kg

#04_WCDMA II_RMC 12.2Kbps_Left Cheek_Ch9262

Communication System: WCDMA ; Frequency: 1852.4 MHz; Duty Cycle: 1:1

Medium: HSL_1900_150217 Medium parameters used : $f = 1852.4 \text{ MHz}$; $\sigma = 1.353 \text{ S/m}$; $\epsilon_r = 40.579$;

$\rho = 1000 \text{ kg/m}^3$

Ambient Temperature : $23.5 \text{ }^\circ\text{C}$; Liquid Temperature : $22.5 \text{ }^\circ\text{C}$

DASY5 Configuration:

- Probe: EX3DV4 - SN3954; ConvF(8.1, 8.1, 8.1); Calibrated: 2014/11/21;
- Sensor-Surface: 1.4mm (Mechanical Surface Detection)
- Electronics: DAE4 Sn1279; Calibrated: 2014/7/23
- Phantom: SAM_RIGHT; Type: QD000P40CD; Serial: 1719
- Measurement SW: DASY52, Version 52.8 (8); SEMCAD X Version 14.6.10 (7331)

Configuration/Ch9262/Area Scan (61x111x1): Interpolated grid: $dx=1.500 \text{ mm}$, $dy=1.500 \text{ mm}$

Maximum value of SAR (interpolated) = 0.899 W/kg

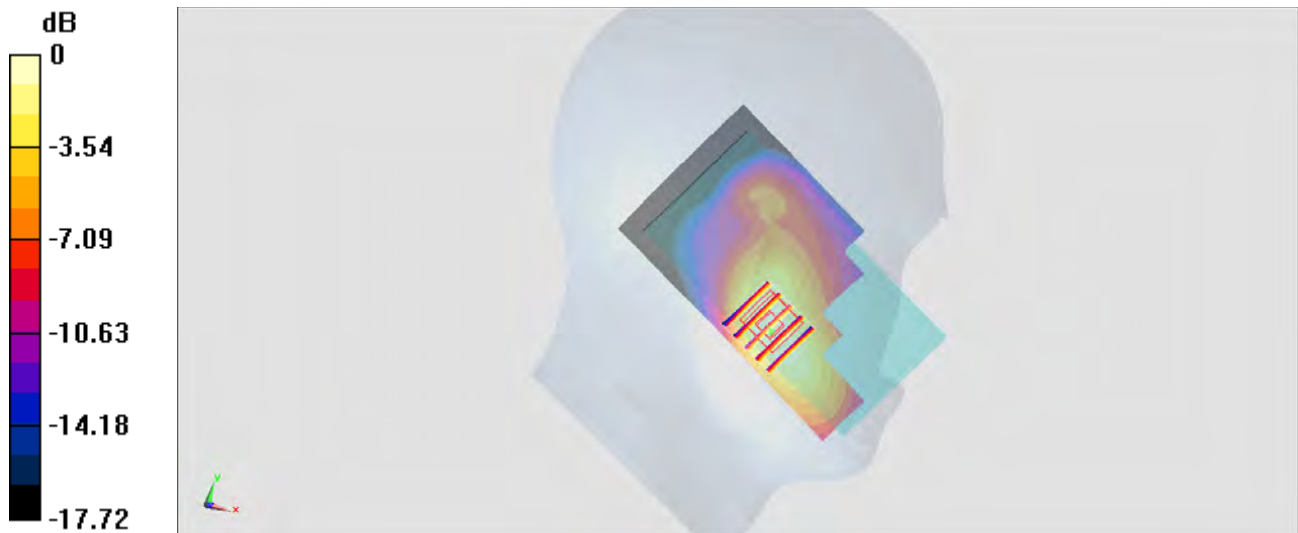
Configuration/Ch9262/Zoom Scan (5x5x7)/Cube 0: Measurement grid: $dx=8\text{mm}$, $dy=8\text{mm}$, $dz=5\text{mm}$

Reference Value = 25.74 V/m ; Power Drift = 0.03 dB

Peak SAR (extrapolated) = 1.06 W/kg

SAR(1 g) = 0.684 W/kg ; SAR(10 g) = 0.421 W/kg

Maximum value of SAR (measured) = 0.889 W/kg



0 dB = $0.889 \text{ W/kg} = -0.51 \text{ dBW/kg}$

#05_LTE Band 5_10M_QPSK_1RB_0offset_Right Cheek_Ch20450

Communication System: LTE; Frequency: 829 MHz; Duty Cycle: 1:1

Medium: HSL_850_141222 Medium parameters used: $f = 829 \text{ MHz}$; $\sigma = 0.895 \text{ S/m}$; $\epsilon_r = 40.871$; $\rho = 1000 \text{ kg/m}^3$

Ambient Temperature : $23.3 \text{ }^\circ\text{C}$; Liquid Temperature : $22.3 \text{ }^\circ\text{C}$

DASY5 Configuration

- Probe: EX3DV4 - SN3925; ConvF(9.79, 9.79, 9.79); Calibrated: 2014/5/22;
- Sensor-Surface: 1.4mm (Mechanical Surface Detection)
- Electronics: DAE3 Sn495; Calibrated: 2014/5/19
- Phantom: SAM_RIGHT; Type: QD000P40CD; Serial: 1719
- Measurement SW: DASY52, Version 52.8 (7); SEMCAD X Version 14.6.10 (7164)

Configuration/Ch20450/Area Scan (71x121x1): Interpolated grid: $dx=1.500 \text{ mm}$, $dy=1.500 \text{ mm}$

Maximum value of SAR (interpolated) = 0.683 W/kg

Configuration/Ch20450/Zoom Scan (5x5x7)/Cube 0: Measurement grid: $dx=8\text{mm}$, $dy=8\text{mm}$, $dz=5\text{mm}$

Reference Value = 27.929 V/m ; Power Drift = -0.13 dB

Peak SAR (extrapolated) = 0.748 W/kg

SAR(1 g) = 0.593 W/kg ; SAR(10 g) = 0.448 W/kg

Maximum value of SAR (measured) = 0.680 W/kg



0 dB = $0.680 \text{ W/kg} = -1.67 \text{ dBW/kg}$

#06_LTE Band 2_20M_QPSK_1RB_0offset_Left Cheek_Ch19100

Communication System: LTE; Frequency: 1900 MHz; Duty Cycle: 1:1

Medium: HSL_1900_141222 Medium parameters used: $f = 1900$ MHz; $\sigma = 1.432$ S/m; $\epsilon_r = 39.04$; $\rho = 1000$ kg/m³

Ambient Temperature : 23.3 °C; Liquid Temperature : 22.3 °C

DASY5 Configuration

- Probe: EX3DV4 - SN3925; ConvF(8.26, 8.26, 8.26); Calibrated: 2014/5/22;
- Sensor-Surface: 1.4mm (Mechanical Surface Detection)
- Electronics: DAE3 Sn495; Calibrated: 2014/5/19
- Phantom: SAM LEFT; Type: QD000P40CD; Serial: TP:1718
- Measurement SW: DASY52, Version 52.8 (7); SEMCAD X Version 14.6.10 (7164)

Configuration/Ch19100/Area Scan (71x121x1): Interpolated grid: dx=1.500 mm, dy=1.500 mm

Maximum value of SAR (interpolated) = 0.878 W/kg

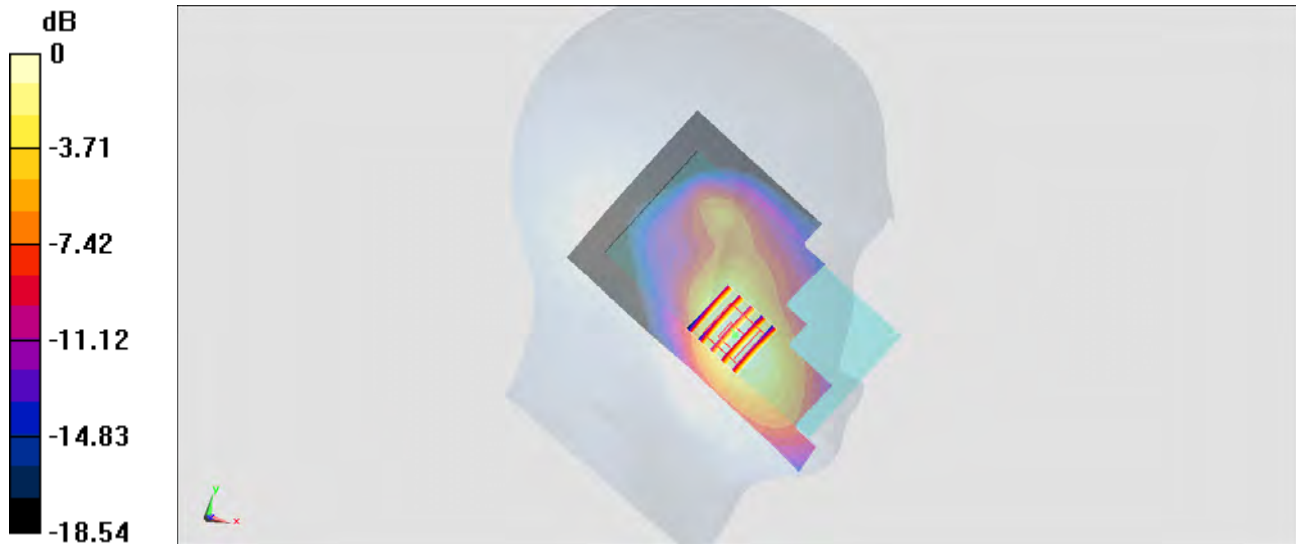
Configuration/Ch19100/Zoom Scan (5x5x7)/Cube 0: Measurement grid: dx=8mm, dy=8mm, dz=5mm

Reference Value = 25.221 V/m; Power Drift = 0.09 dB

Peak SAR (extrapolated) = 1.08 W/kg

SAR(1 g) = 0.684 W/kg; SAR(10 g) = 0.416 W/kg

Maximum value of SAR (measured) = 0.850 W/kg



0 dB = 0.850 W/kg = -0.71 dBW/kg

#07_LTE Band 7_20M_QPSK_1RB_0offset_Left Cheek_Ch21350

Communication System: LTE ; Frequency: 2560 MHz;Duty Cycle: 1:1

Medium: HSL_2600_141219 Medium parameters used: $f = 2560$ MHz; $\sigma = 1.95$ S/m; $\epsilon_r = 37.646$; $\rho = 1000$ kg/m³

Ambient Temperature : 23.5 °C ; Liquid Temperature : 22.5 °C

DASY5 Configuration

- Probe: EX3DV4 - SN3925; ConvF(7.17, 7.17, 7.17); Calibrated: 2014/5/22;
- Sensor-Surface: 1.4mm (Mechanical Surface Detection)
- Electronics: DAE3 Sn495; Calibrated: 2014/5/19
- Phantom: SAM_RIGHT; Type: QD000P40CD; Serial: 1719
- Measurement SW: DASY52, Version 52.8 (7); SEMCAD X Version 14.6.10 (7164)

Configuration/Ch21350/Area Scan (81x141x1): Interpolated grid: dx=1.200 mm, dy=1.200 mm

Maximum value of SAR (interpolated) = 1.58 W/kg

Configuration/Ch21350/Zoom Scan (7x7x7)/Cube 0: Measurement grid: dx=5mm, dy=5mm, dz=5mm

Reference Value = 28.239 V/m; Power Drift = 0.07 dB

Peak SAR (extrapolated) = 1.99 W/kg

SAR(1 g) = 1.02 W/kg; SAR(10 g) = 0.525 W/kg

Maximum value of SAR (measured) = 1.47 W/kg



0 dB = 1.47 W/kg = 1.67 dBW/kg

#08_WLAN2.4GHz_802.11b 1Mbps_Right Cheek_Ch6

Communication System: 802.11b ; Frequency: 2437 MHz;Duty Cycle: 1:1.024

Medium: HSL_2450_141223 Medium parameters used: $f = 2437$ MHz; $\sigma = 1.83$ mho/m; $\epsilon_r = 38.7$; $\rho = 1000$ kg/m³

Ambient Temperature : 23.4 °C ; Liquid Temperature : 22.4 °C

DASY4 Configuration:

- Probe: ES3DV3 - SN3270; ConvF(4.52, 4.52, 4.52); Calibrated: 2014/9/26
- Sensor-Surface: 2mm (Mechanical Surface Detection)
- Electronics: DAE4 Sn778; Calibrated: 2014/8/21
- Phantom: SAM_Right; Type: SAM; Serial: TP-1303
- ;Postprocessing SW: SEMCAD, V1.8 Build 159

Ch6/Area Scan (81x141x1): Measurement grid: dx=12mm, dy=12mm

Maximum value of SAR (interpolated) = 0.673 mW/g

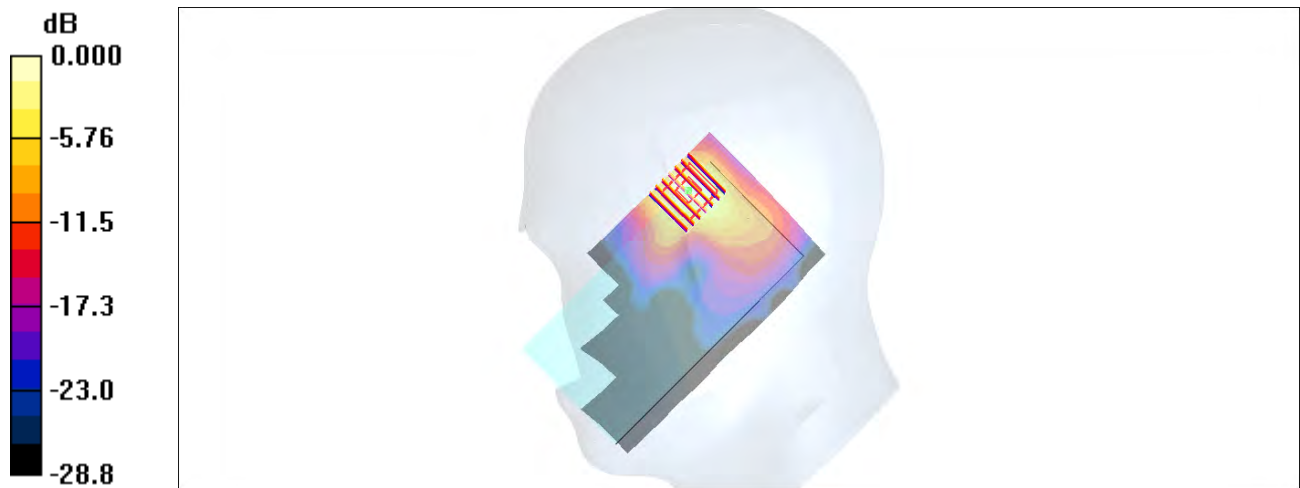
Ch6/Zoom Scan (7x7x7)/Cube 0: Measurement grid: dx=5mm, dy=5mm, dz=5mm

Reference Value = 19.3 V/m; Power Drift = 0.050 dB

Peak SAR (extrapolated) = 1.08 W/kg

SAR(1 g) = 0.498 mW/g; SAR(10 g) = 0.226 mW/g

Maximum value of SAR (measured) = 0.662 mW/g



#09_WLAN5GHz_802.11a 6Mbps_Right Cheek_Ch36

Communication System: 802.11a; Frequency: 5180 MHz; Duty Cycle: 1:1.146

Medium: HSL_5G_150216 Medium parameters used: $f = 5180$ MHz; $\sigma = 4.79$ S/m; $\epsilon_r = 35.489$; $\rho = 1000$ kg/m³

Ambient Temperature : 23.4 °C; Liquid Temperature : 22.4 °C

DASY5 Configuration:

- Probe: EX3DV4 - SN3955; ConvF(5.13, 5.13, 5.13); Calibrated: 2014/11/21;
- Sensor-Surface: 1.4mm (Mechanical Surface Detection)
- Electronics: DAE4 Sn1399; Calibrated: 2014/11/13
- Phantom: SAM-Left; Type: QD 000 P40 C; Serial: TP-1478
- Measurement SW: DASY52, Version 52.8 (8); SEMCAD X Version 14.6.10 (7331)

Configuration/Ch36/Area Scan (101x181x1): Interpolated grid: dx=1.000 mm, dy=1.000 mm
 Maximum value of SAR (interpolated) = 0.496 W/kg

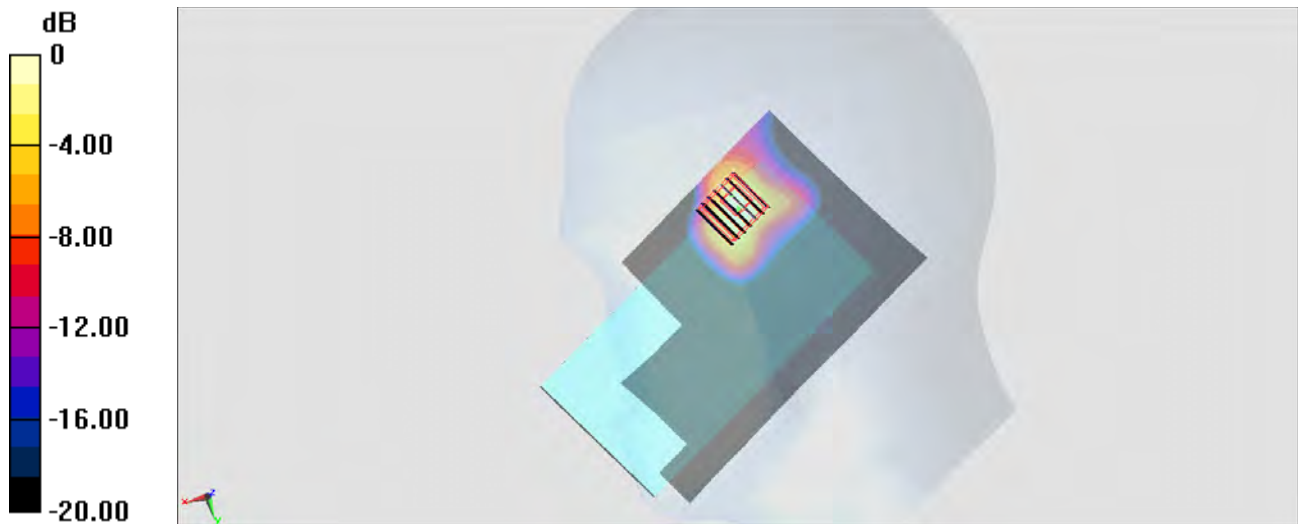
Configuration/Ch36/Zoom Scan (7x7x7)/Cube 0: Measurement grid: dx=4mm, dy=4mm, dz=1.4mm

Reference Value = 10.47 V/m; Power Drift = -0.03 dB

Peak SAR (extrapolated) = 0.928 W/kg

SAR(1 g) = 0.209 W/kg; SAR(10 g) = 0.061 W/kg

Maximum value of SAR (measured) = 0.524 W/kg



0 dB = 0.524 W/kg = -2.81 dBW/kg

#10_WLAN5GHz_802.11a 6Mbps_Right Cheek_Ch60

Communication System: 802.11a; Frequency: 5300 MHz; Duty Cycle: 1:1.146

Medium: HSL_5G_150216 Medium parameters used: $f = 5300$ MHz; $\sigma = 4.92$ S/m; $\epsilon_r = 35.315$; $\rho = 1000$ kg/m³

Ambient Temperature : 23.4 °C; Liquid Temperature : 22.4 °C

DASY5 Configuration:

- Probe: EX3DV4 - SN3955; ConvF(4.92, 4.92, 4.92); Calibrated: 2014/11/21;
- Sensor-Surface: 1.4mm (Mechanical Surface Detection)
- Electronics: DAE4 Sn1399; Calibrated: 2014/11/13
- Phantom: SAM-Left; Type: QD 000 P40 C; Serial: TP-1478
- Measurement SW: DASY52, Version 52.8 (8); SEMCAD X Version 14.6.10 (7331)

Configuration/Ch60/Area Scan (101x181x1): Interpolated grid: dx=1.000 mm, dy=1.000 mm
 Maximum value of SAR (interpolated) = 0.526 W/kg

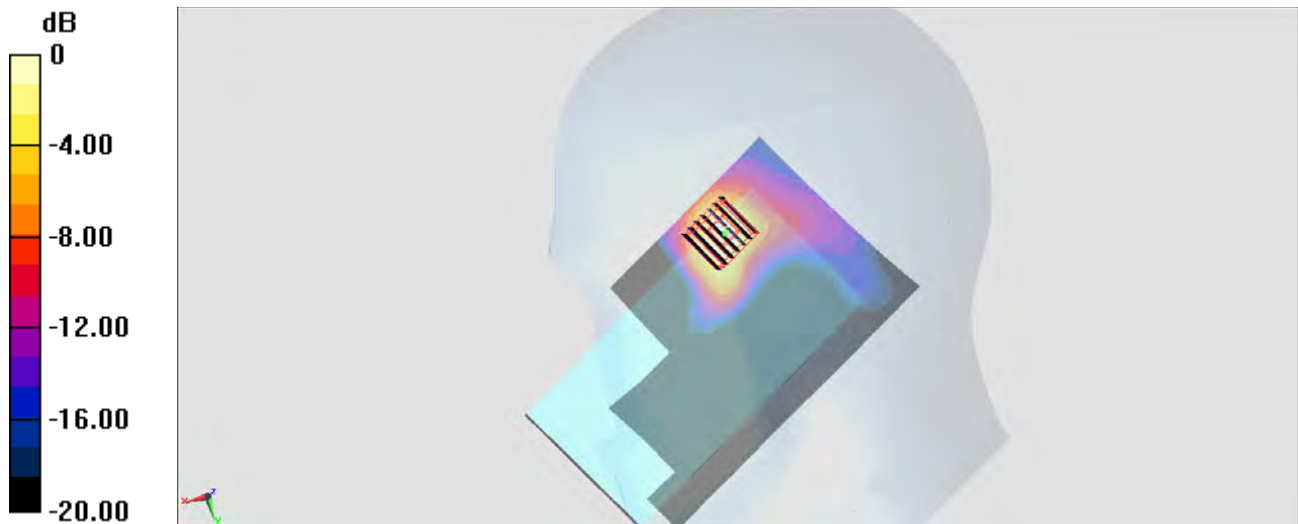
Configuration/Ch60/Zoom Scan (7x7x7)/Cube 0: Measurement grid: dx=4mm, dy=4mm, dz=1.4mm

Reference Value = 11.10 V/m; Power Drift = -0.16 dB

Peak SAR (extrapolated) = 1.01 W/kg

SAR(1 g) = 0.216 W/kg; SAR(10 g) = 0.067 W/kg

Maximum value of SAR (measured) = 0.567 W/kg



0 dB = 0.567 W/kg = -2.46 dBW/kg

#11_WLAN5GHz_802.11a 6Mbps_Right Cheek_Ch140

Communication System: 802.11a; Frequency: 5700 MHz; Duty Cycle: 1:1.146

Medium: HSL_5G_150216 Medium parameters used: $f = 5700$ MHz; $\sigma = 5.333$ S/m; $\epsilon_r = 34.507$; $\rho = 1000$ kg/m³

Ambient Temperature : 23.4 °C; Liquid Temperature : 22.4 °C

DASY5 Configuration:

- Probe: EX3DV4 - SN3955; ConvF(4.63, 4.63, 4.63); Calibrated: 2014/11/21;
- Sensor-Surface: 1.4mm (Mechanical Surface Detection)
- Electronics: DAE4 Sn1399; Calibrated: 2014/11/13
- Phantom: SAM-Left; Type: QD 000 P40 C; Serial: TP-1478
- Measurement SW: DASY52, Version 52.8 (8); SEMCAD X Version 14.6.10 (7331)

Configuration/Ch140/Area Scan (101x181x1): Interpolated grid: dx=1.000 mm, dy=1.000 mm

Maximum value of SAR (interpolated) = 0.491 W/kg

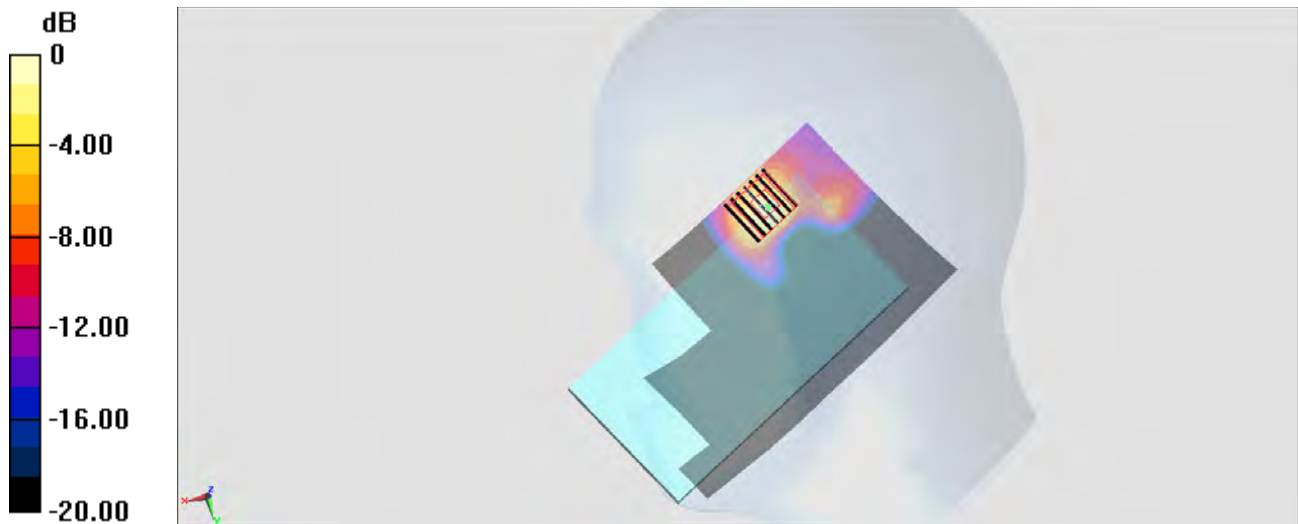
Configuration/Ch140/Zoom Scan (7x7x7)/Cube 0: Measurement grid: dx=4mm, dy=4mm, dz=1.4mm

Reference Value = 11.11 V/m; Power Drift = 0.04 dB

Peak SAR (extrapolated) = 0.926 W/kg

SAR(1 g) = 0.196 W/kg; SAR(10 g) = 0.055 W/kg

Maximum value of SAR (measured) = 0.528 W/kg



0 dB = 0.528 W/kg = -2.77 dBW/kg

#12_WLAN5GHz_802.11a 6Mbps_Right Cheek_Ch149

Communication System: 802.11a; Frequency: 5745 MHz; Duty Cycle: 1:1.146

Medium: HSL_5G_141225 Medium parameters used: $f = 5745$ MHz; $\sigma = 5.36$ mho/m; $\epsilon_r = 34.5$; $\rho = 1000$ kg/m³

Ambient Temperature : 23.5 °C; Liquid Temperature : 22.5 °C

DASY4 Configuration:

- Probe: EX3DV4 - SN3925; ConvF(4.63, 4.63, 4.63); Calibrated: 2014/5/22
- Sensor-Surface: 1.4mm (Mechanical Surface Detection)
- Electronics: DAE3 Sn495; Calibrated: 2014/5/19
- Phantom: SAM_Right; Type: SAM; Serial: TP-1303
- ;Postprocessing SW: SEMCAD, V1.8 Build 159

Ch149/Area Scan (101x181x1): Measurement grid: dx=10mm, dy=10mm

Maximum value of SAR (interpolated) = 1.00 mW/g

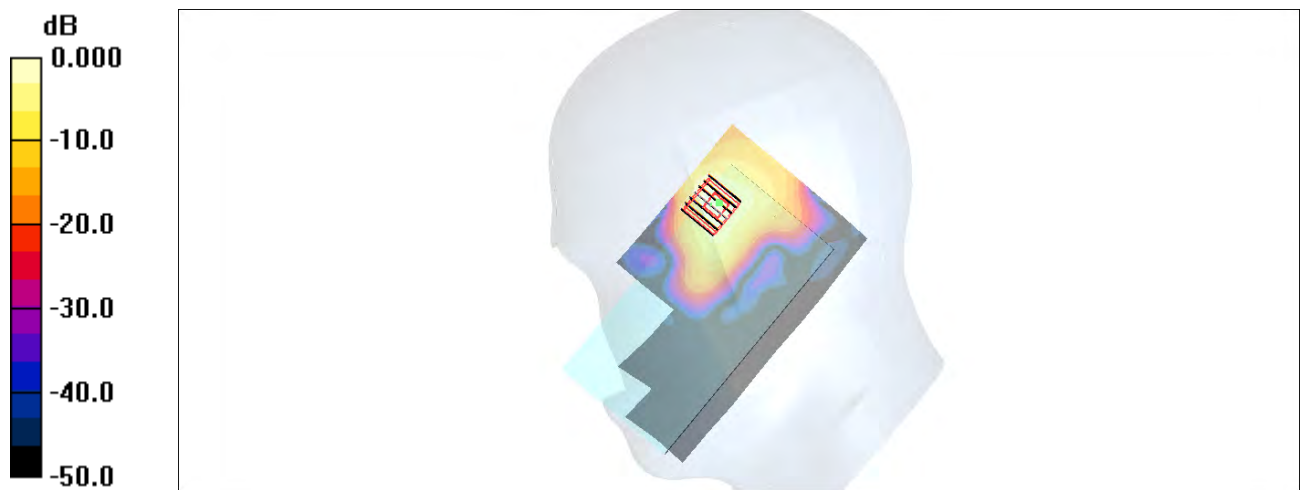
Ch149/Zoom Scan (7x7x7)/Cube 0: Measurement grid: dx=4mm, dy=4mm, dz=1.4mm

Reference Value = 13.7 V/m; Power Drift = 0.092 dB

Peak SAR (extrapolated) = 1.61 W/kg

SAR(1 g) = 0.332 mW/g; SAR(10 g) = 0.100 mW/g

Maximum value of SAR (measured) = 0.895 mW/g



#13_Bluetooth_1Mbps_Right_Cheek_Ch39

Communication System: Bluetooth; Frequency: 2441 MHz; Duty Cycle: 1:1.2

Medium: HSL_2450_141231 Medium parameters used: $f = 2441$ MHz; $\sigma = 1.83$ mho/m; $\epsilon_r = 38.7$; $\rho = 1000$ kg/m³

Ambient Temperature : 23.4 °C ; Liquid Temperature : 22.4 °C

DASY4 Configuration:

- Probe: ES3DV3 - SN3270; ConvF(4.52, 4.52, 4.52); Calibrated: 2014/9/26
- Sensor-Surface: 2mm (Mechanical Surface Detection)
- Electronics: DAE4 Sn778; Calibrated: 2014/8/21
- Phantom: SAM_Right; Type: SAM; Serial: TP-1303
- ;Postprocessing SW: SEMCAD, V1.8 Build 159

Ch39/Area Scan (81x141x1): Measurement grid: dx=12mm, dy=12mm

Maximum value of SAR (interpolated) = 0.028 mW/g

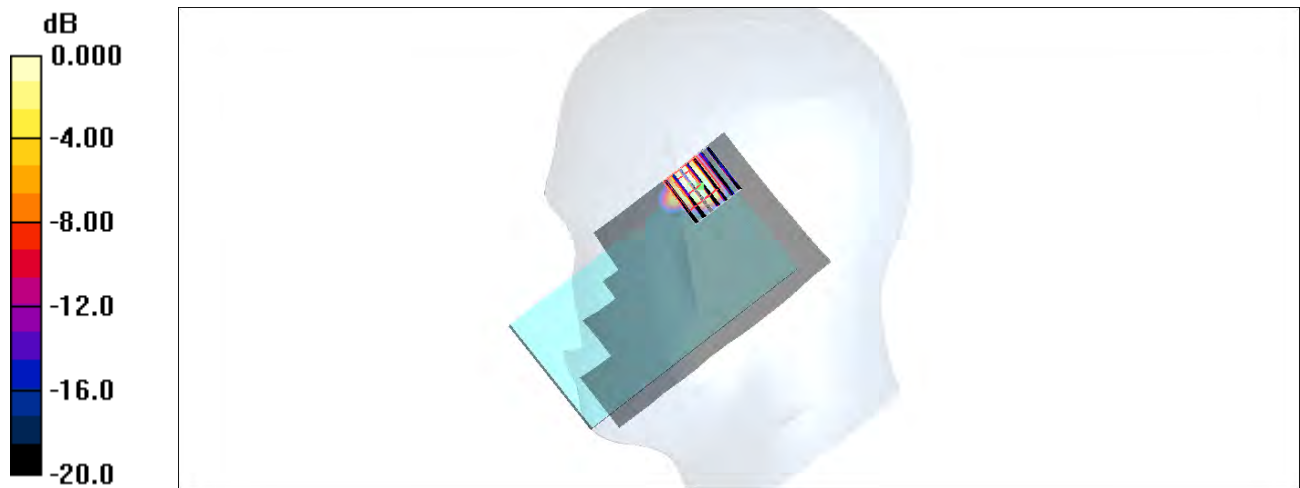
Ch39/Zoom Scan (7x7x7)/Cube 0: Measurement grid: dx=5mm, dy=5mm, dz=5mm

Reference Value = 2.80 V/m; Power Drift = -0.055 dB

Peak SAR (extrapolated) = 0.058 W/kg

SAR(1 g) = 0.011 mW/g; SAR(10 g) = 0.00298 mW/g

Maximum value of SAR (measured) = 0.014 mW/g



0 dB = 0.014mW/g

#14_GSM850_GPRS (4 Tx slots)_Front_1cm_Ch251

Communication System: GSM850; Frequency: 848.8 MHz; Duty Cycle: 1:2.08

Medium: MSL_850_141216 Medium parameters used: $f = 849$ MHz; $\sigma = 0.998$ S/m; $\epsilon_r = 54.324$; $\rho = 1000$ kg/m³

Ambient Temperature : 23.3 °C; Liquid Temperature : 22.3 °C

DASY5 Configuration

- Probe: EX3DV4 - SN3954; ConvF(10.01, 10.01, 10.01); Calibrated: 2014/11/21;
- Sensor-Surface: 1.4mm (Mechanical Surface Detection)
- Electronics: DAE4 Sn1279; Calibrated: 2014/7/23
- Phantom: SAM LEFT; Type: QD000P40CD; Serial: TP:1718
- Measurement SW: DASY52, Version 52.8 (7); SEMCAD X Version 14.6.10 (7164)

Configuration/Ch251/Area Scan (61x111x1): Interpolated grid: dx=1.500 mm, dy=1.500 mm
 Maximum value of SAR (interpolated) = 0.922 W/kg

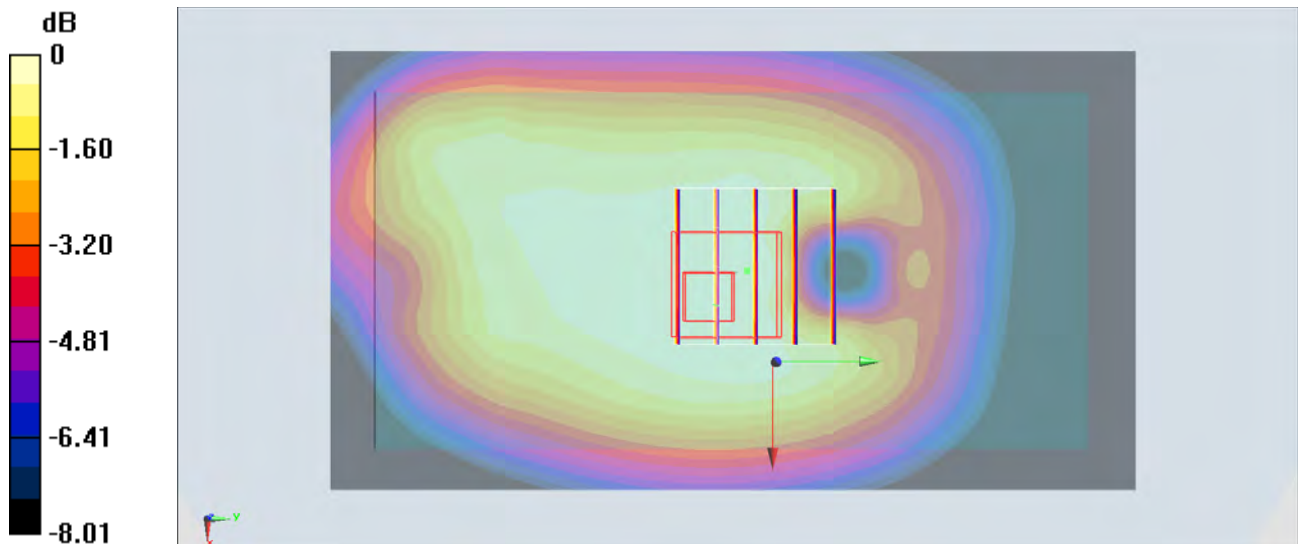
Configuration/Ch251/Zoom Scan (5x5x7)/Cube 0: Measurement grid: dx=8mm, dy=8mm, dz=5mm

Reference Value = 29.571 V/m; Power Drift = -0.03 dB

Peak SAR (extrapolated) = 0.931 W/kg

SAR(1 g) = 0.754 W/kg; SAR(10 g) = 0.589 W/kg

Maximum value of SAR (measured) = 0.857 W/kg



0 dB = 0.857 W/kg = -0.67 dBW/kg

#15_GSM1900_GPRS (4 Tx slots)_Back_1cm_Ch512

Communication System: PCS; Frequency: 1850.2 MHz; Duty Cycle: 1:2.08

Medium: MSL_1900_141215 Medium parameters used : $f = 1850.2$ MHz; $\sigma = 1.461$ S/m; $\epsilon_r = 54.53$; $\rho = 1000$ kg/m³

Ambient Temperature : 23.2 °C; Liquid Temperature : 22.2 °C

DASY5 Configuration

- Probe: EX3DV4 - SN3954; ConvF(7.93, 7.93, 7.93); Calibrated: 2014/11/21;
- Sensor-Surface: 1.4mm (Mechanical Surface Detection)
- Electronics: DAE4 Sn1279; Calibrated: 2014/7/23
- Phantom: SAM_RIGHT; Type: QD000P40CD; Serial: 1719
- Measurement SW: DASY52, Version 52.8 (7); SEMCAD X Version 14.6.10 (7164)

Configuration/Ch512/Area Scan (61x111x1): Interpolated grid: dx=1.500 mm, dy=1.500 mm

Maximum value of SAR (interpolated) = 1.39 W/kg

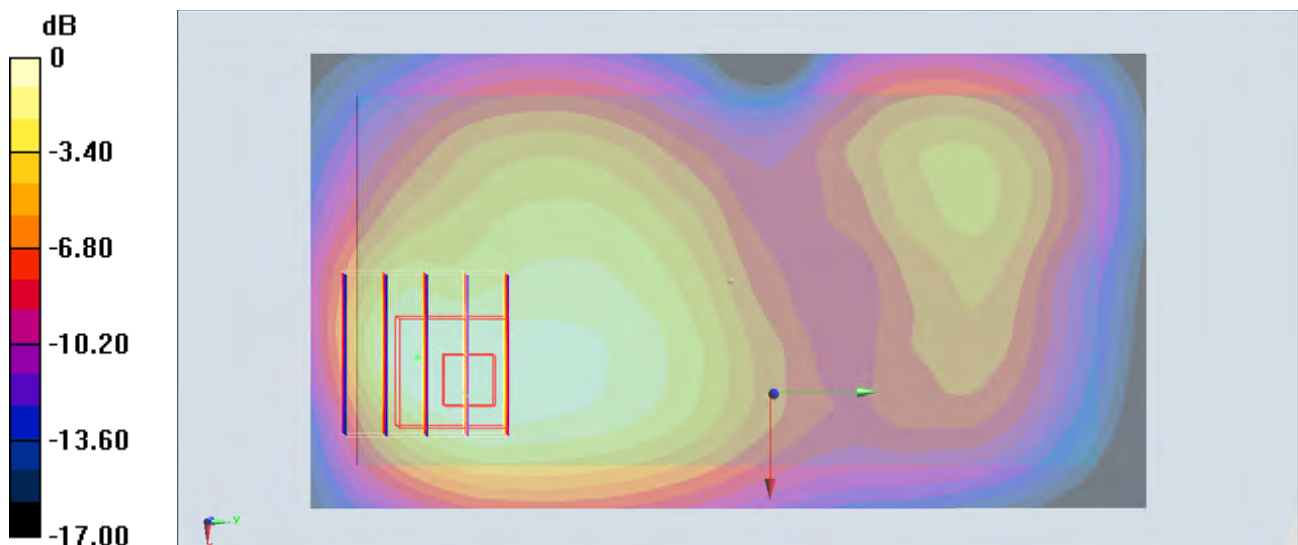
Configuration/Ch512/Zoom Scan (5x5x7)/Cube 0: Measurement grid: dx=8mm, dy=8mm, dz=5mm

Reference Value = 30.238 V/m; Power Drift = -0.02 dB

Peak SAR (extrapolated) = 1.73 W/kg

SAR(1 g) = 0.92 W/kg; SAR(10 g) = 0.587 W/kg

Maximum value of SAR (measured) = 1.35 W/kg



0 dB = 1.35 W/kg = 1.30 dBW/kg

#16_WCDMA V_RMC 12.2Kbps_Front_1cm_Ch4233

Communication System: WCDMA; Frequency: 846.6 MHz; Duty Cycle: 1:1

Medium: MSL_850_141216 Medium parameters used: $f = 847 \text{ MHz}$; $\sigma = 0.995 \text{ S/m}$; $\epsilon_r = 54.349$; $\rho = 1000 \text{ kg/m}^3$

Ambient Temperature : $23.3 \text{ }^\circ\text{C}$; Liquid Temperature : $22.3 \text{ }^\circ\text{C}$

DASY5 Configuration

- Probe: EX3DV4 - SN3954; ConvF(10.01, 10.01, 10.01); Calibrated: 2014/11/21;
- Sensor-Surface: 1.4mm (Mechanical Surface Detection)
- Electronics: DAE4 Sn1279; Calibrated: 2014/7/23
- Phantom: SAM LEFT; Type: QD000P40CD; Serial: TP:1718
- Measurement SW: DASY52, Version 52.8 (7); SEMCAD X Version 14.6.10 (7164)

Configuration/Ch4233/Area Scan (61x111x1): Interpolated grid: $dx=1.500 \text{ mm}$, $dy=1.500 \text{ mm}$
 Maximum value of SAR (interpolated) = 0.746 W/kg

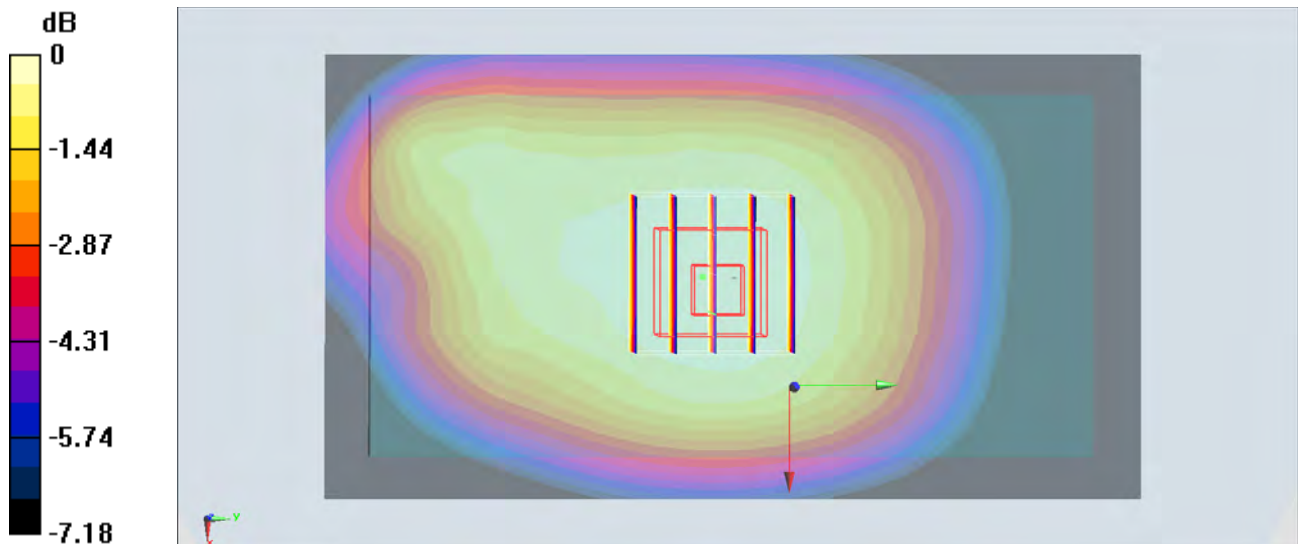
Configuration/Ch4233/Zoom Scan (5x5x7)/Cube 0: Measurement grid: $dx=8\text{mm}$, $dy=8\text{mm}$, $dz=5\text{mm}$

Reference Value = 27.965 V/m ; Power Drift = 0.06 dB

Peak SAR (extrapolated) = 0.813 W/kg

SAR(1 g) = 0.662 W/kg ; SAR(10 g) = 0.522 W/kg

Maximum value of SAR (measured) = 0.748 W/kg



$0 \text{ dB} = 0.748 \text{ W/kg} = -1.26 \text{ dBW/kg}$

#17_WCDMA II_RMC 12.2Kbps_Back_1cm_Ch9262

Communication System: WCDMA ; Frequency: 1852.4 MHz;Duty Cycle: 1:1

Medium: MSL_1900_150217 Medium parameters used : $f = 1852.4$ MHz; $\sigma = 1.467$ S/m; $\epsilon_r = 53.746$;

$\rho = 1000$ kg/m³

Ambient Temperature : 23.5 °C ; Liquid Temperature : 22.5 °C

DASY5 Configuration:

- Probe: EX3DV4 - SN3954; ConvF(7.93, 7.93, 7.93); Calibrated: 2014/11/21;
- Sensor-Surface: 1.4mm (Mechanical Surface Detection)
- Electronics: DAE4 Sn1279; Calibrated: 2014/7/23
- Phantom: SAM_RIGHT; Type: QD000P40CD; Serial: 1719
- Measurement SW: DASY52, Version 52.8 (8);SEMCAD X Version 14.6.10 (7331)

Configuration/Ch9262/Area Scan (61x111x1): Interpolated grid: dx=1.500 mm, dy=1.500 mm

Maximum value of SAR (interpolated) = 1.30 W/kg

Configuration/Ch9262/Zoom Scan (5x5x7)/Cube 0: Measurement grid: dx=8mm, dy=8mm,

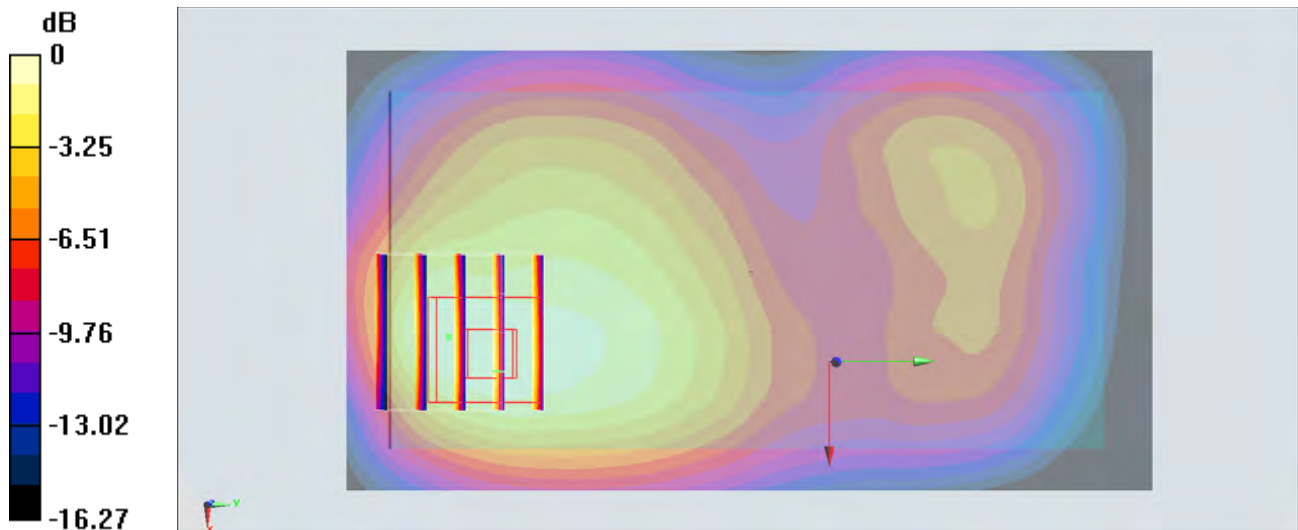
dz=5mm

Reference Value = 29.27 V/m; Power Drift = -0.07 dB

Peak SAR (extrapolated) = 1.54 W/kg

SAR(1 g) = 0.950 W/kg; SAR(10 g) = 0.566 W/kg

Maximum value of SAR (measured) = 1.20 W/kg



0 dB = 1.20 W/kg = 0.79 dBW/kg

#18_LTE Band 5_10M_QPSK_1RB_0offset_Front_1cm_Ch20450

Communication System: LTE; Frequency: 829 MHz; Duty Cycle: 1:1

Medium: MSL_850_150214 Medium parameters used: $f = 829 \text{ MHz}$; $\sigma = 0.966 \text{ S/m}$; $\epsilon_r = 54.271$; $\rho = 1000 \text{ kg/m}^3$

Ambient Temperature : $23.4 \text{ }^\circ\text{C}$; Liquid Temperature : $22.4 \text{ }^\circ\text{C}$

DASY5 Configuration:

- Probe: EX3DV4 - SN3954; ConvF(10.01, 10.01, 10.01); Calibrated: 2014/11/21;
- Sensor-Surface: 1.4mm (Mechanical Surface Detection)
- Electronics: DAE4 Sn1279; Calibrated: 2014/7/23
- Phantom: SAM-Left; Type: QD 000 P40 C; Serial: TP-1478
- Measurement SW: DASY52, Version 52.8 (8); SEMCAD X Version 14.6.10 (7331)

Configuration/Ch20450/Area Scan (61x111x1): Interpolated grid: $dx=1.500 \text{ mm}$, $dy=1.500 \text{ mm}$

Maximum value of SAR (interpolated) = 0.804 W/kg

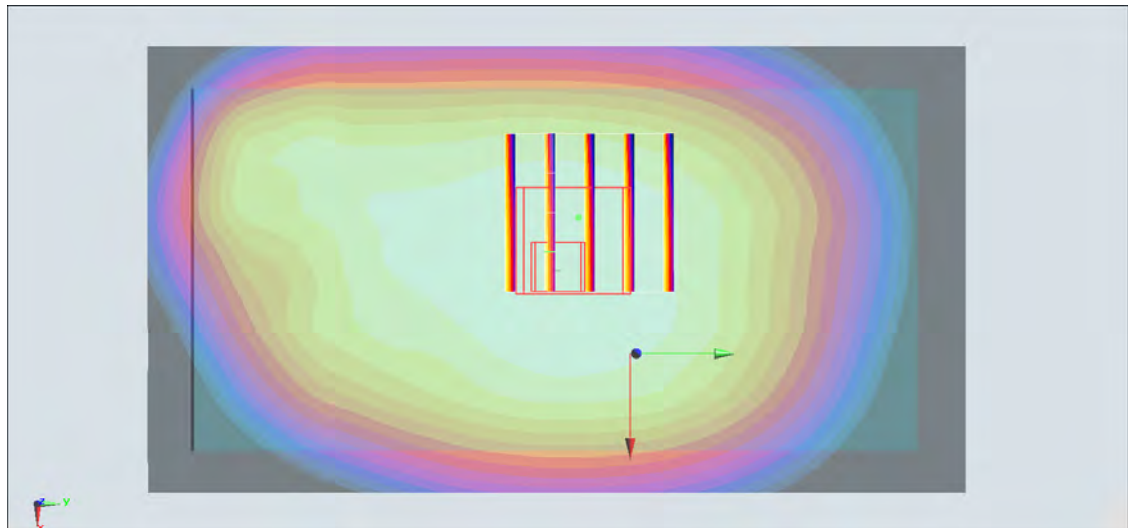
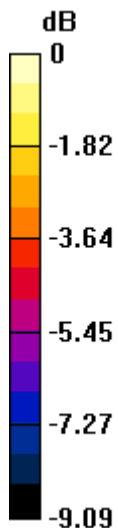
Configuration/Ch20450/Zoom Scan (5x5x7)/Cube 0: Measurement grid: $dx=8\text{mm}$, $dy=8\text{mm}$, $dz=5\text{mm}$

Reference Value = 29.43 V/m ; Power Drift = -0.01 dB

Peak SAR (extrapolated) = 0.865 W/kg

SAR(1 g) = 0.667 W/kg ; SAR(10 g) = 0.505 W/kg

Maximum value of SAR (measured) = 0.799 W/kg



$0 \text{ dB} = 0.799 \text{ W/kg} = -0.97 \text{ dBW/kg}$

#19_LTE Band 2_20M_QPSK_1RB_0offset_Back_1cm_Ch18700

Communication System: LTE; Frequency: 1860 MHz; Duty Cycle: 1:1

Medium: MSL_1900_141220 Medium parameters used: $f = 1860$ MHz; $\sigma = 1.521$ S/m; $\epsilon_r = 51.697$; $\rho = 1000$ kg/m³

Ambient Temperature : 23.3 °C; Liquid Temperature : 22.3 °C

DASY5 Configuration

- Probe: EX3DV4 - SN3925; ConvF(7.87, 7.87, 7.87); Calibrated: 2014/5/22;
- Sensor-Surface: 1.4mm (Mechanical Surface Detection)
- Electronics: DAE3 Sn495; Calibrated: 2014/5/19
- Phantom: SAM_RIGHT; Type: QD000P40CD; Serial: 1719
- Measurement SW: DASY52, Version 52.8 (7); SEMCAD X Version 14.6.10 (7164)

Configuration/Ch18700/Area Scan (61x111x1): Interpolated grid: dx=1.500 mm, dy=1.500 mm

Maximum value of SAR (interpolated) = 1.49 W/kg

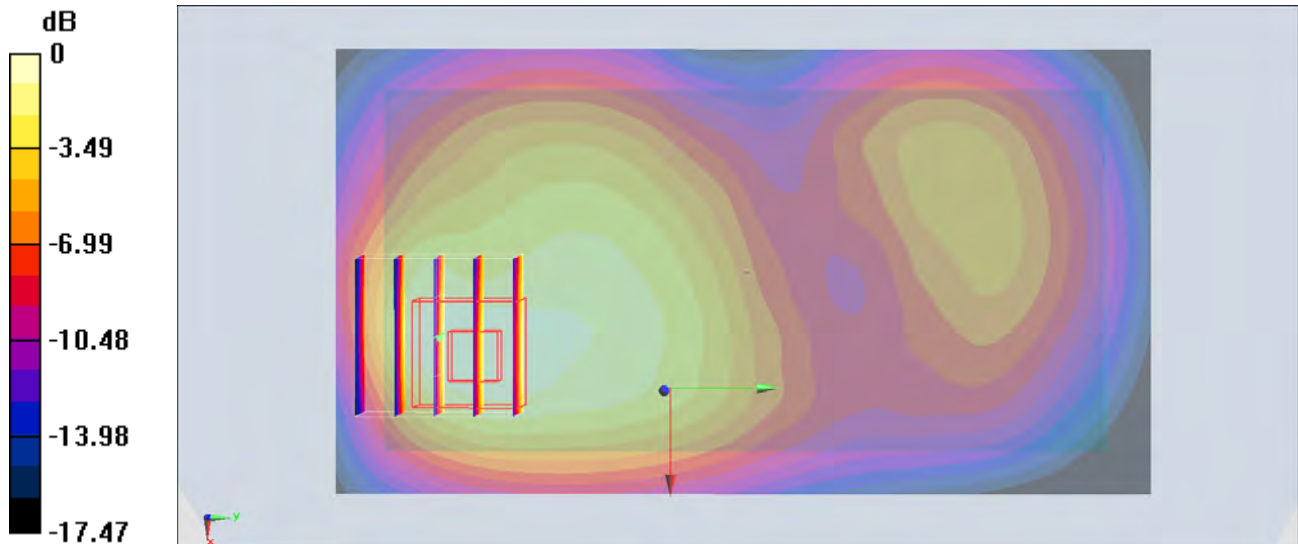
Configuration/Ch18700/Zoom Scan (5x5x7)/Cube 0: Measurement grid: dx=8mm, dy=8mm, dz=5mm

Reference Value = 30.992 V/m; Power Drift = -0.05 dB

Peak SAR (extrapolated) = 1.86 W/kg

SAR(1 g) = 1.046 W/kg; SAR(10 g) = 0.632 W/kg

Maximum value of SAR (measured) = 1.43 W/kg



0 dB = 1.43 W/kg = 1.55 dBW/kg

#20_LTE Band 7_20M_QPSK_1RB_0offset_Back_1cm_Ch20850

Communication System: LTE; Frequency: 2510 MHz; Duty Cycle: 1:1

Medium: MSL_2600_141219 Medium parameters used: $f = 2510$ MHz; $\sigma = 2.114$ S/m; $\epsilon_r = 54.819$; $\rho = 1000$ kg/m³

Ambient Temperature : 23.5 °C; Liquid Temperature : 22.5 °C

DASY5 Configuration

- Probe: EX3DV4 - SN3925; ConvF(7.08, 7.08, 7.08); Calibrated: 2014/5/22;
- Sensor-Surface: 1.4mm (Mechanical Surface Detection)
- Electronics: DAE3 Sn495; Calibrated: 2014/5/19
- Phantom: SAM LEFT; Type: QD000P40CD; Serial: TP:1718
- Measurement SW: DASY52, Version 52.8 (7); SEMCAD X Version 14.6.10 (7164)

Configuration/Ch20850/Area Scan (81x141x1): Interpolated grid: dx=1.200 mm, dy=1.200 mm

Maximum value of SAR (interpolated) = 1.48 W/kg

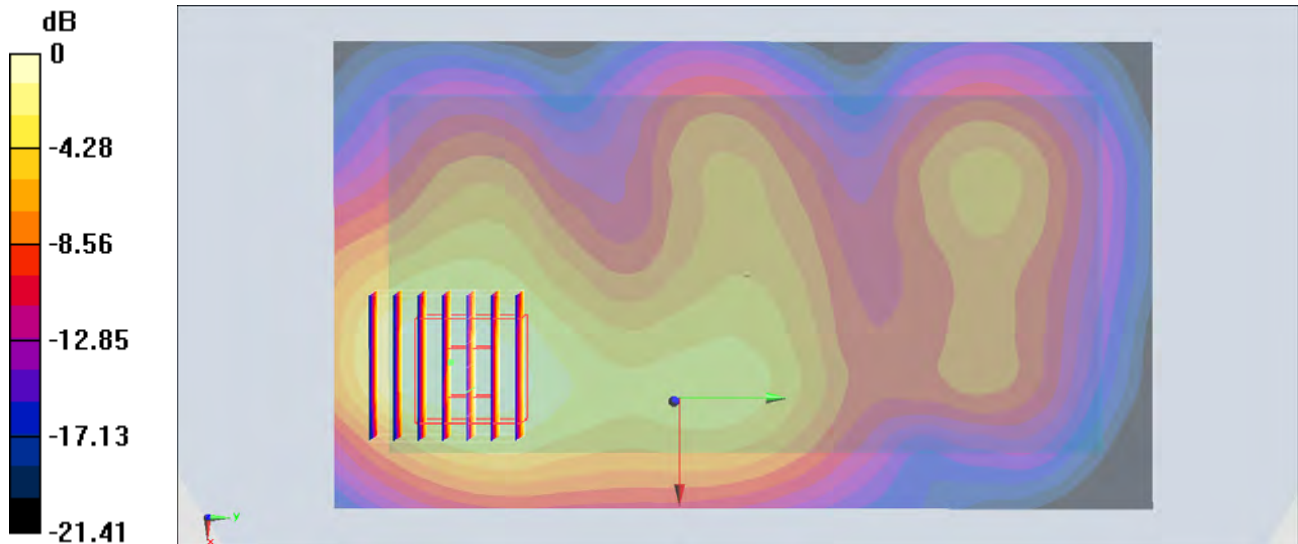
Configuration/Ch20850/Zoom Scan (7x7x7)/Cube 0: Measurement grid: dx=5mm, dy=5mm, dz=5mm

Reference Value = 26.139 V/m; Power Drift = -0.00 dB

Peak SAR (extrapolated) = 1.94 W/kg

SAR(1 g) = 0.998 W/kg; SAR(10 g) = 0.528 W/kg

Maximum value of SAR (measured) = 1.45 W/kg



0 dB = 1.45 W/kg = 1.61 dBW/kg

#21_WLAN2.4GHz_802.11b 1Mbps_Back_1cm_Ch6

Communication System: 802.11b ; Frequency: 2437 MHz;Duty Cycle: 1:1.024

Medium: MSL_2450_150216 Medium parameters used: $f = 2437$ MHz; $\sigma = 1.961$ S/m; $\epsilon_r = 51.347$; $\rho = 1000$ kg/m³

Ambient Temperature : 23.4 °C ; Liquid Temperature : 22.4 °C

DASY5 Configuration:

- Probe: EX3DV4 - SN3955; ConvF(7.32, 7.32, 7.32); Calibrated: 2014/11/21;
- Sensor-Surface: 1.4mm (Mechanical Surface Detection)
- Electronics: DAE4 Sn1399; Calibrated: 2014/11/13
- Phantom: SAM-Left; Type: QD 000 P40 C; Serial: TP-1478
- Measurement SW: DASY52, Version 52.8 (8);SEMCAD X Version 14.6.10 (7331)

Configuration/Ch6/Area Scan (91x141x1): Interpolated grid: dx=1.200 mm, dy=1.200 mm
 Maximum value of SAR (interpolated) = 1.44 W/kg

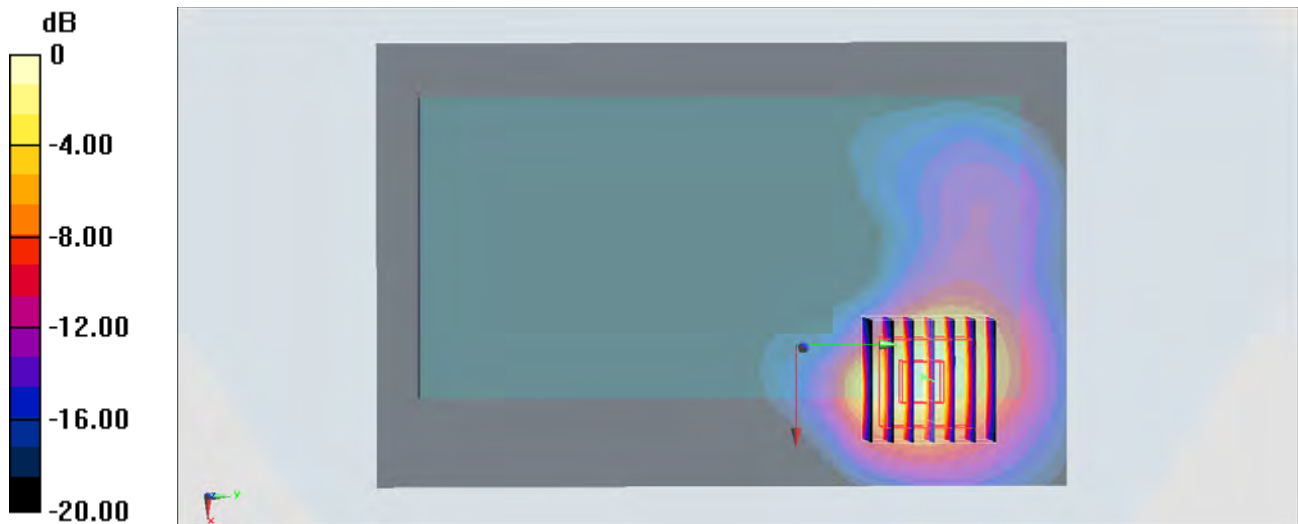
Configuration/Ch6/Zoom Scan (7x7x7)/Cube 0: Measurement grid: dx=5mm, dy=5mm, dz=5mm

Reference Value = 27.89 V/m; Power Drift = -0.01 dB

Peak SAR (extrapolated) = 1.76 W/kg

SAR(1 g) = 0.841 W/kg; SAR(10 g) = 0.373 W/kg

Maximum value of SAR (measured) = 1.37 W/kg



0 dB = 1.37 W/kg = 1.37 dBW/kg

#22_WLAN5GHz_802.11a_6Mbps_Front_1cm_Ch36

Communication System: 802.11a; Frequency: 5180 MHz; Duty Cycle: 1:1.146

Medium: MSL_5G_150305 Medium parameters used: $f = 5180$ MHz; $\sigma = 5.402$ S/m; $\epsilon_r = 47.988$; $\rho = 1000$ kg/m³

Ambient Temperature : 23.4 °C; Liquid Temperature : 22.4 °C

DASY5 Configuration

- Probe: EX3DV4 - SN3925; ConvF(4.53, 4.53, 4.53); Calibrated: 2014/5/22;
- Sensor-Surface: 1.4mm (Mechanical Surface Detection)
- Electronics: DAE3 Sn495; Calibrated: 2014/5/19
- Phantom: SAM_Left; Type: QD000P40CD; Serial: S/N:1796
- Measurement SW: DASY52, Version 52.8 (8); SEMCAD X Version 14.6.10 (7331)

Configuration/Ch36/Area Scan (101x181x1): Interpolated grid: dx=1.000 mm, dy=1.000 mm
 Maximum value of SAR (interpolated) = 0.0753 W/kg

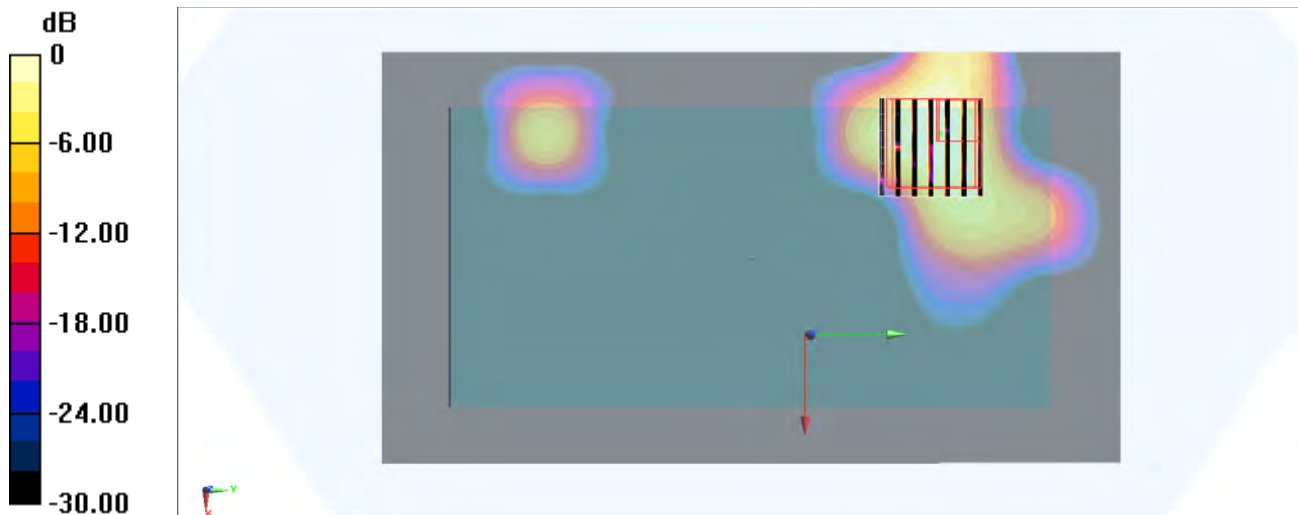
Configuration/Ch36/Zoom Scan (7x7x7)/Cube 0: Measurement grid: dx=4mm, dy=4mm, dz=1.4mm

Reference Value = 3.451 V/m; Power Drift = 0.08 dB

Peak SAR (extrapolated) = 0.196 W/kg

SAR(1 g) = 0.14 W/kg; SAR(10 g) = 0.041 W/kg

Maximum value of SAR (measured) = 0.0722 W/kg



0 dB = 0.0722 W/kg = -11.41 dBW/kg

#23_WLAN5GHz_802.11a_6Mbps_Back_1cm_Ch149

Communication System: 802.11a; Frequency: 5745 MHz; Duty Cycle: 1:1.146

Medium: MSL_5G_150305 Medium parameters used: $f = 5745 \text{ MHz}$; $\sigma = 6.164 \text{ S/m}$; $\epsilon_r = 47.04$; $\rho = 1000 \text{ kg/m}^3$

Ambient Temperature : $23.4 \text{ }^\circ\text{C}$; Liquid Temperature : $22.4 \text{ }^\circ\text{C}$

DASY5 Configuration

- Probe: EX3DV4 - SN3925; ConvF(4.09, 4.09, 4.09); Calibrated: 2014/5/22;
- Sensor-Surface: 1.4mm (Mechanical Surface Detection)
- Electronics: DAE3 Sn495; Calibrated: 2014/5/19
- Phantom: SAM_Left; Type: QD000P40CD; Serial: S/N:1796
- Measurement SW: DASY52, Version 52.8 (8); SEMCAD X Version 14.6.10 (7331)

Configuration/Ch149/Area Scan (101x181x1): Interpolated grid: $dx=1.000 \text{ mm}$, $dy=1.000 \text{ mm}$

Maximum value of SAR (interpolated) = 0.0719 W/kg

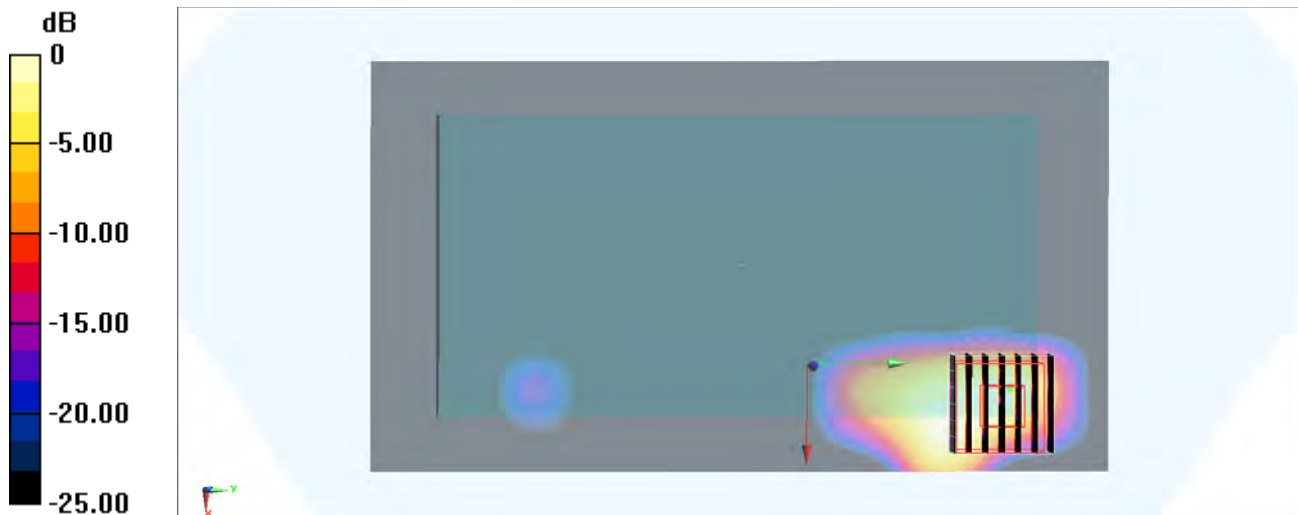
Configuration/Ch149/Zoom Scan (7x7x7)/Cube 0: Measurement grid: $dx=4\text{mm}$, $dy=4\text{mm}$, $dz=1.4\text{mm}$

Reference Value = 3.758 V/m ; Power Drift = 0.07 dB

Peak SAR (extrapolated) = 0.229 W/kg

SAR(1 g) = 0.072 W/kg ; SAR(10 g) = 0.021 W/kg

Maximum value of SAR (measured) = 0.0731 W/kg



0 dB = $0.0731 \text{ W/kg} = -11.36 \text{ dBW/kg}$

#24_GSM850_GPRS (4 Tx slots)_Front_1.5cm_Ch251

Communication System: GSM850; Frequency: 848.8 MHz; Duty Cycle: 1:2.08

Medium: MSL_850_141216 Medium parameters used: $f = 849$ MHz; $\sigma = 0.998$ S/m; $\epsilon_r = 54.324$; $\rho = 1000$ kg/m³

Ambient Temperature : 23.3 °C; Liquid Temperature : 22.3 °C

DASY5 Configuration

- Probe: EX3DV4 - SN3954; ConvF(10.01, 10.01, 10.01); Calibrated: 2014/11/21;
- Sensor-Surface: 1.4mm (Mechanical Surface Detection)
- Electronics: DAE4 Sn1279; Calibrated: 2014/7/23
- Phantom: SAM LEFT; Type: QD000P40CD; Serial: TP:1718
- Measurement SW: DASY52, Version 52.8 (7); SEMCAD X Version 14.6.10 (7164)

Configuration/Ch251/Area Scan (61x111x1): Interpolated grid: dx=1.500 mm, dy=1.500 mm
 Maximum value of SAR (interpolated) = 0.787 W/kg

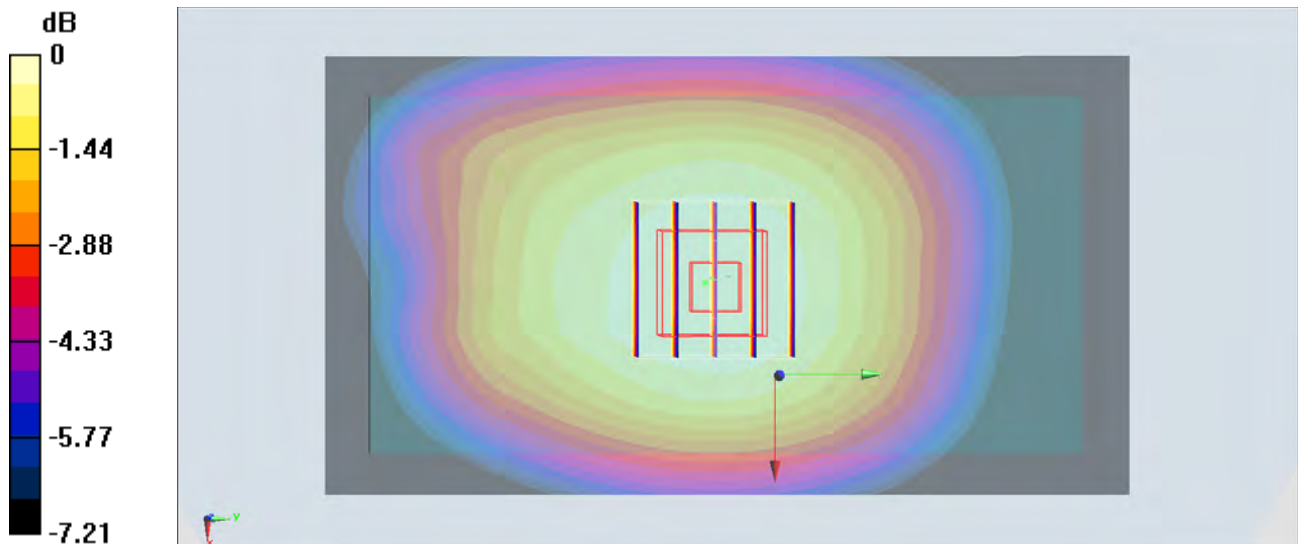
Configuration/Ch251/Zoom Scan (5x5x7)/Cube 0: Measurement grid: dx=8mm, dy=8mm, dz=5mm

Reference Value = 28.710 V/m; Power Drift = 0.00 dB

Peak SAR (extrapolated) = 0.854 W/kg

SAR(1 g) = 0.690 W/kg; SAR(10 g) = 0.537 W/kg

Maximum value of SAR (measured) = 0.783 W/kg



0 dB = 0.783 W/kg = -1.06 dBW/kg

#25_GSM1900_GPRS (4 Tx slots)_Back_1.5cm_Ch810

Communication System: PCS; Frequency: 1909.8 MHz; Duty Cycle: 1:2.08

Medium: MSL_1900_141215 Medium parameters used: $f = 1910$ MHz; $\sigma = 1.532$ S/m; $\epsilon_r = 54.386$; $\rho = 1000$ kg/m³

Ambient Temperature : 23.2 °C; Liquid Temperature : 22.2 °C

DASY5 Configuration

- Probe: EX3DV4 - SN3954; ConvF(7.93, 7.93, 7.93); Calibrated: 2014/11/21;
- Sensor-Surface: 1.4mm (Mechanical Surface Detection)
- Electronics: DAE4 Sn1279; Calibrated: 2014/7/23
- Phantom: SAM_RIGHT; Type: QD000P40CD; Serial: 1719
- Measurement SW: DASY52, Version 52.8 (7); SEMCAD X Version 14.6.10 (7164)

Configuration/Ch810/Area Scan (61x111x1): Interpolated grid: dx=1.500 mm, dy=1.500 mm
 Maximum value of SAR (interpolated) = 0.810 W/kg

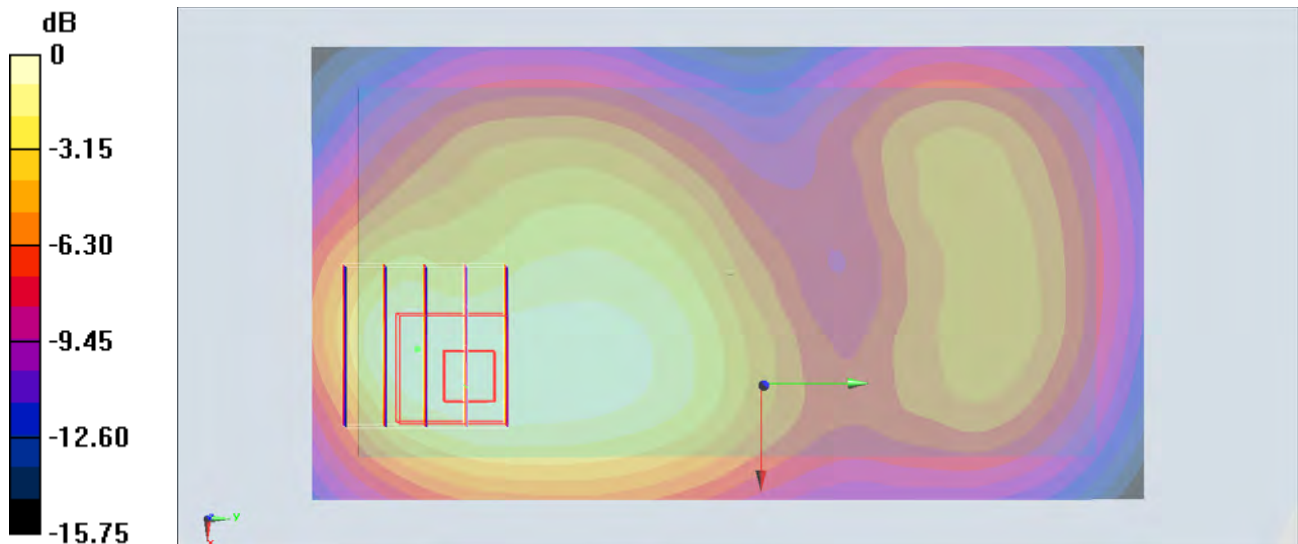
Configuration/Ch810/Zoom Scan (5x5x7)/Cube 0: Measurement grid: dx=8mm, dy=8mm, dz=5mm

Reference Value = 22.638 V/m; Power Drift = -0.06 dB

Peak SAR (extrapolated) = 0.968 W/kg

SAR(1 g) = 0.596 W/kg; SAR(10 g) = 0.357 W/kg

Maximum value of SAR (measured) = 0.779 W/kg



0 dB = 0.779 W/kg = -1.08 dBW/kg

#26_WCDMA V_RMC 12.2Kbps_Front_1.5cm_Ch4233

Communication System: WCDMA; Frequency: 846.6 MHz; Duty Cycle: 1:1

Medium: MSL_850_141216 Medium parameters used: $f = 847$ MHz; $\sigma = 0.995$ S/m; $\epsilon_r = 54.349$; $\rho = 1000$ kg/m³

Ambient Temperature : 23.3 °C; Liquid Temperature : 22.3 °C

DASY5 Configuration

- Probe: EX3DV4 - SN3954; ConvF(10.01, 10.01, 10.01); Calibrated: 2014/11/21;
- Sensor-Surface: 1.4mm (Mechanical Surface Detection)
- Electronics: DAE4 Sn1279; Calibrated: 2014/7/23
- Phantom: SAM LEFT; Type: QD000P40CD; Serial: TP:1718
- Measurement SW: DASY52, Version 52.8 (7); SEMCAD X Version 14.6.10 (7164)

Configuration/Ch4233/Area Scan (61x111x1): Interpolated grid: dx=1.500 mm, dy=1.500 mm

Maximum value of SAR (interpolated) = 0.698 W/kg

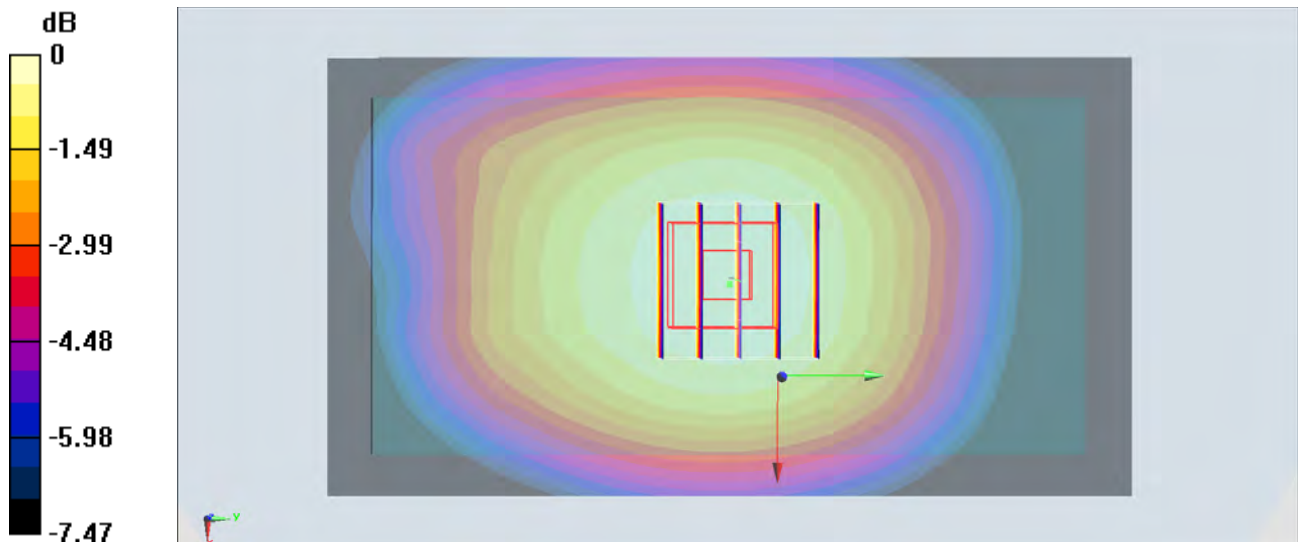
Configuration/Ch4233/Zoom Scan (5x5x7)/Cube 0: Measurement grid: dx=8mm, dy=8mm, dz=5mm

Reference Value = 27.234 V/m; Power Drift = 0.04 dB

Peak SAR (extrapolated) = 0.773 W/kg

SAR(1 g) = 0.622 W/kg; SAR(10 g) = 0.482 W/kg

Maximum value of SAR (measured) = 0.709 W/kg



0 dB = 0.709 W/kg = -1.49 dBW/kg

#27_WCDMA II_RMC 12.2Kbps_Back_1.5cm_Ch9262

Communication System: WCDMA ; Frequency: 1852.4 MHz; Duty Cycle: 1:1

Medium: MSL_1900_150217 Medium parameters used : $f = 1852.4 \text{ MHz}$; $\sigma = 1.467 \text{ S/m}$; $\epsilon_r = 53.746$;

$\rho = 1000 \text{ kg/m}^3$

Ambient Temperature : $23.5 \text{ }^\circ\text{C}$; Liquid Temperature : $22.5 \text{ }^\circ\text{C}$

DASY5 Configuration:

- Probe: EX3DV4 - SN3954; ConvF(7.93, 7.93, 7.93); Calibrated: 2014/11/21;
- Sensor-Surface: 1.4mm (Mechanical Surface Detection)
- Electronics: DAE4 Sn1279; Calibrated: 2014/7/23
- Phantom: SAM_RIGHT; Type: QD000P40CD; Serial: 1719
- Measurement SW: DASY52, Version 52.8 (8); SEMCAD X Version 14.6.10 (7331)

Configuration/Ch9262/Area Scan (61x111x1): Interpolated grid: $dx=1.500 \text{ mm}$, $dy=1.500 \text{ mm}$

Maximum value of SAR (interpolated) = 0.700 W/kg

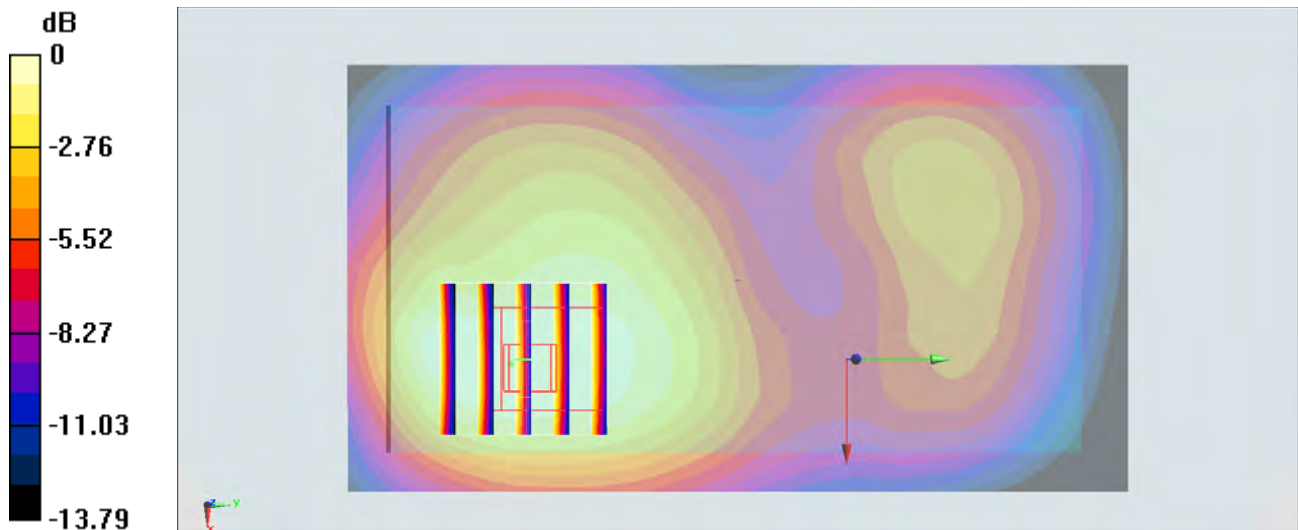
Configuration/Ch9262/Zoom Scan (5x5x7)/Cube 0: Measurement grid: $dx=8\text{mm}$, $dy=8\text{mm}$, $dz=5\text{mm}$

Reference Value = 22.10 V/m ; Power Drift = -0.03 dB

Peak SAR (extrapolated) = 0.821 W/kg

SAR(1 g) = 0.541 W/kg ; SAR(10 g) = 0.351 W/kg

Maximum value of SAR (measured) = 0.683 W/kg



0 dB = $0.683 \text{ W/kg} = -1.66 \text{ dBW/kg}$

#28_LTE Band 5_10M_QPSK_1RB_0offset_Front_1.5cm_Ch20450

Communication System: LTE; Frequency: 829 MHz; Duty Cycle: 1:1

Medium: MSL_850_150214 Medium parameters used: $f = 829$ MHz; $\sigma = 0.966$ S/m; $\epsilon_r = 54.271$; $\rho = 1000$ kg/m³

Ambient Temperature : 23.4 °C; Liquid Temperature : 22.4 °C

DASY5 Configuration:

- Probe: EX3DV4 - SN3954; ConvF(10.01, 10.01, 10.01); Calibrated: 2014/11/21;
- Sensor-Surface: 1.4mm (Mechanical Surface Detection)
- Electronics: DAE4 Sn1279; Calibrated: 2014/7/23
- Phantom: SAM-Left; Type: QD 000 P40 C; Serial: TP-1478
- Measurement SW: DASY52, Version 52.8 (8); SEMCAD X Version 14.6.10 (7331)

Configuration/Ch20450/Area Scan (61x111x1): Interpolated grid: dx=1.500 mm, dy=1.500 mm

Maximum value of SAR (interpolated) = 0.755 W/kg

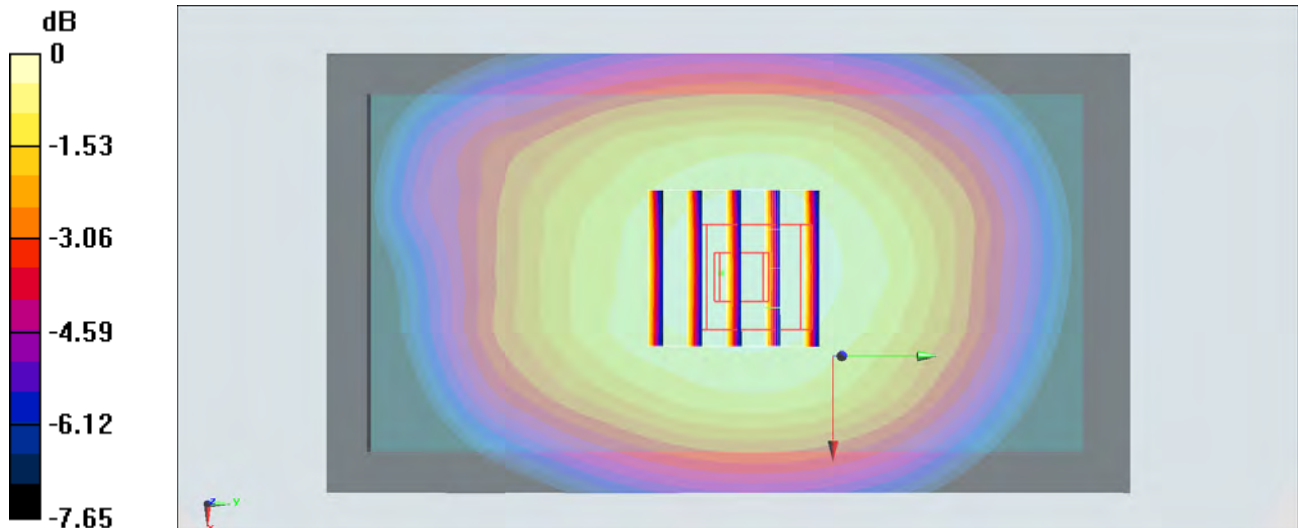
Configuration/Ch20450/Zoom Scan (5x5x7)/Cube 0: Measurement grid: dx=8mm, dy=8mm, dz=5mm

Reference Value = 28.91 V/m; Power Drift = -0.02 dB

Peak SAR (extrapolated) = 0.839 W/kg

SAR(1 g) = 0.632 W/kg; SAR(10 g) = 0.482 W/kg

Maximum value of SAR (measured) = 0.764 W/kg



0 dB = 0.764 W/kg = -1.17 dBW/kg

#29_LTE Band 2_20M_QPSK_1RB_0offset_Back_1.5cm_Ch19100

Communication System: LTE; Frequency: 1900 MHz; Duty Cycle: 1:1

Medium: MSL_1900_141220 Medium parameters used: $f = 1900$ MHz; $\sigma = 1.567$ S/m; $\epsilon_r = 51.574$; $\rho = 1000$ kg/m³

Ambient Temperature : 23.3 °C; Liquid Temperature : 22.3 °C

DASY5 Configuration

- Probe: EX3DV4 - SN3925; ConvF(7.87, 7.87, 7.87); Calibrated: 2014/5/22;
- Sensor-Surface: 1.4mm (Mechanical Surface Detection)
- Electronics: DAE3 Sn495; Calibrated: 2014/5/19
- Phantom: SAM_RIGHT; Type: QD000P40CD; Serial: 1719
- Measurement SW: DASY52, Version 52.8 (7); SEMCAD X Version 14.6.10 (7164)

Configuration/Ch19100/Area Scan (61x111x1): Interpolated grid: dx=1.500 mm, dy=1.500 mm

Maximum value of SAR (interpolated) = 0.860 W/kg

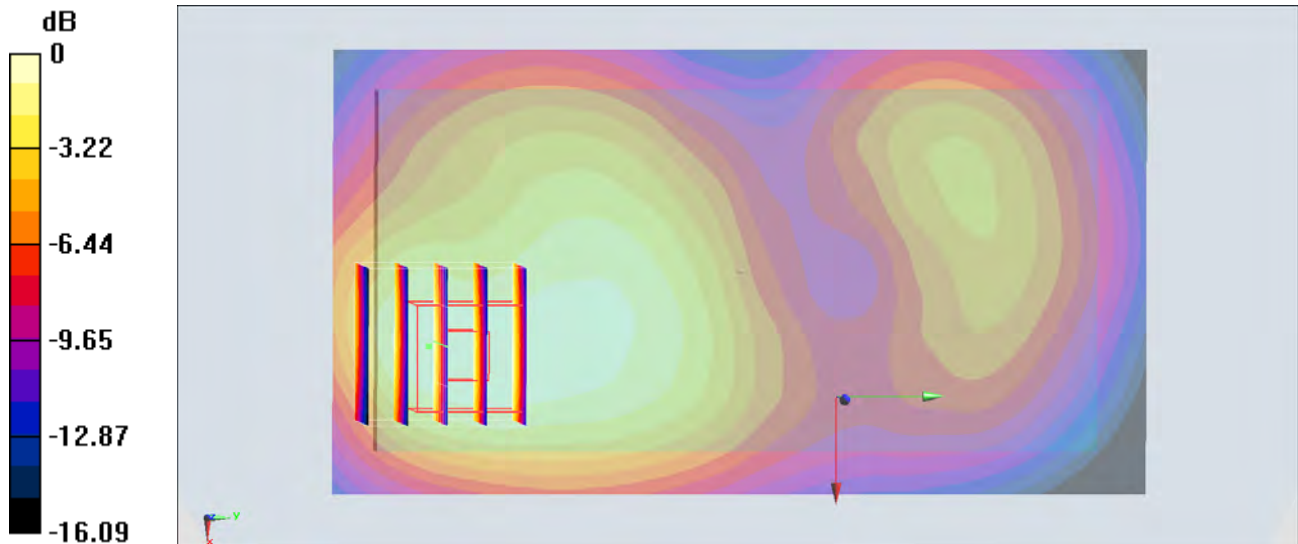
Configuration/Ch19100/Zoom Scan (5x5x7)/Cube 0: Measurement grid: dx=8mm, dy=8mm, dz=5mm

Reference Value = 23.027 V/m; Power Drift = -0.01 dB

Peak SAR (extrapolated) = 0.999 W/kg

SAR(1 g) = 0.619 W/kg; SAR(10 g) = 0.376 W/kg

Maximum value of SAR (measured) = 0.803 W/kg



0 dB = 0.803 W/kg = -0.95 dBW/kg

#30_LTE Band 7_20M_QPSK_1RB_0offset_Back_1.5cm_Ch20850

Communication System: LTE; Frequency: 2510 MHz; Duty Cycle: 1:1

Medium: MSL_2600_141219 Medium parameters used: $f = 2510$ MHz; $\sigma = 2.114$ S/m; $\epsilon_r = 54.819$; $\rho = 1000$ kg/m³

Ambient Temperature : 23.5 °C; Liquid Temperature : 22.5 °C

DASY5 Configuration

- Probe: EX3DV4 - SN3925; ConvF(7.08, 7.08, 7.08); Calibrated: 2014/5/22;
- Sensor-Surface: 1.4mm (Mechanical Surface Detection)
- Electronics: DAE3 Sn495; Calibrated: 2014/5/19
- Phantom: SAM LEFT; Type: QD000P40CD; Serial: TP:1718
- Measurement SW: DASY52, Version 52.8 (7); SEMCAD X Version 14.6.10 (7164)

Configuration/Ch20850/Area Scan (81x141x1): Interpolated grid: dx=1.200 mm, dy=1.200 mm

Maximum value of SAR (interpolated) = 0.822 W/kg

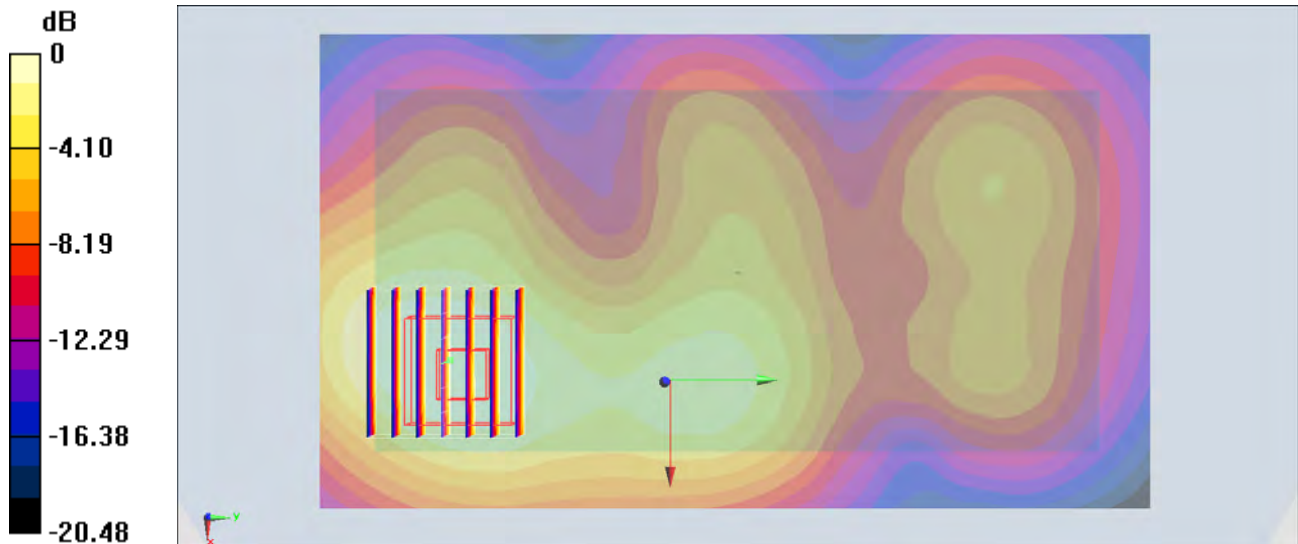
Configuration/Ch20850/Zoom Scan (7x7x7)/Cube 0: Measurement grid: dx=5mm, dy=5mm, dz=5mm

Reference Value = 19.218 V/m; Power Drift = -0.06 dB

Peak SAR (extrapolated) = 1.01 W/kg

SAR(1 g) = 0.534 W/kg; SAR(10 g) = 0.291 W/kg

Maximum value of SAR (measured) = 0.751 W/kg



0 dB = 0.751 W/kg = -1.24 dBW/kg

#31_WLAN2.4GHz_802.11b 1Mbps_Back_1.5cm_Ch6

Communication System: 802.11b; Frequency: 2437 MHz; Duty Cycle: 1:1.024

Medium: MSL_2450_150216 Medium parameters used: $f = 2437$ MHz; $\sigma = 1.961$ S/m; $\epsilon_r = 51.347$; $\rho = 1000$ kg/m³

Ambient Temperature : 23.4 °C; Liquid Temperature : 22.4 °C

DASY5 Configuration:

- Probe: EX3DV4 - SN3955; ConvF(7.32, 7.32, 7.32); Calibrated: 2014/11/21;
- Sensor-Surface: 1.4mm (Mechanical Surface Detection)
- Electronics: DAE4 Sn1399; Calibrated: 2014/11/13
- Phantom: SAM-Left; Type: QD 000 P40 C; Serial: TP-1478
- Measurement SW: DASY52, Version 52.8 (8); SEMCAD X Version 14.6.10 (7331)

Configuration/Ch6/Area Scan (91x141x1): Interpolated grid: dx=1.200 mm, dy=1.200 mm
 Maximum value of SAR (interpolated) = 0.553 W/kg

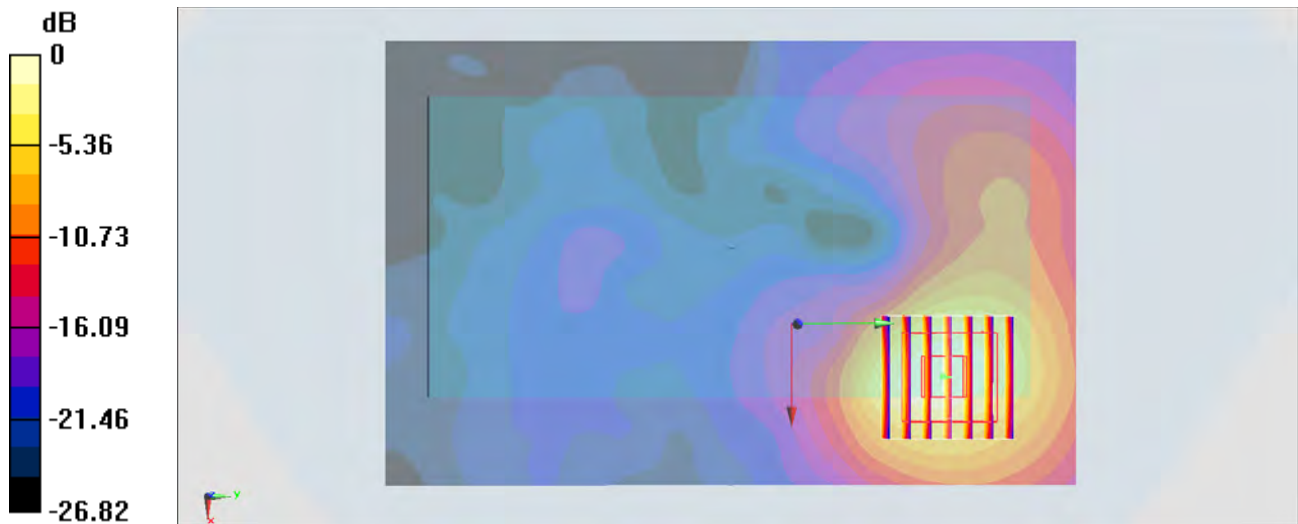
Configuration/Ch6/Zoom Scan (7x7x7)/Cube 0: Measurement grid: dx=5mm, dy=5mm, dz=5mm

Reference Value = 17.16 V/m; Power Drift = -0.03 dB

Peak SAR (extrapolated) = 0.642 W/kg

SAR(1 g) = 0.333 W/kg; SAR(10 g) = 0.162 W/kg

Maximum value of SAR (measured) = 0.529 W/kg



0 dB = 0.529 W/kg = -2.77 dBW/kg

#32_WLAN5GHz_802.11a 6Mbps_Front_1.5cm_Ch36

Communication System: 802.11a; Frequency: 5180 MHz; Duty Cycle: 1:1.146

Medium: MSL_5G_141226 Medium parameters used: $f = 5180 \text{ MHz}$; $\sigma = 5.21 \text{ mho/m}$; $\epsilon_r = 47.5$; $\rho = 1000 \text{ kg/m}^3$

Ambient Temperature : $23.4 \text{ }^\circ\text{C}$; Liquid Temperature : $22.4 \text{ }^\circ\text{C}$

DASY4 Configuration:

- Probe: EX3DV4 - SN3925; ConvF(4.53, 4.53, 4.53); Calibrated: 2014/5/22
- Sensor-Surface: 1.4mm (Mechanical Surface Detection)
- Electronics: DAE3 Sn495; Calibrated: 2014/5/19
- Phantom: SAM_Right; Type: SAM; Serial: TP-1303
- ;Postprocessing SW: SEMCAD, V1.8 Build 159

Ch36/Area Scan (101x181x1): Measurement grid: $dx=10\text{mm}$, $dy=10\text{mm}$

Maximum value of SAR (interpolated) = 0.186 mW/g

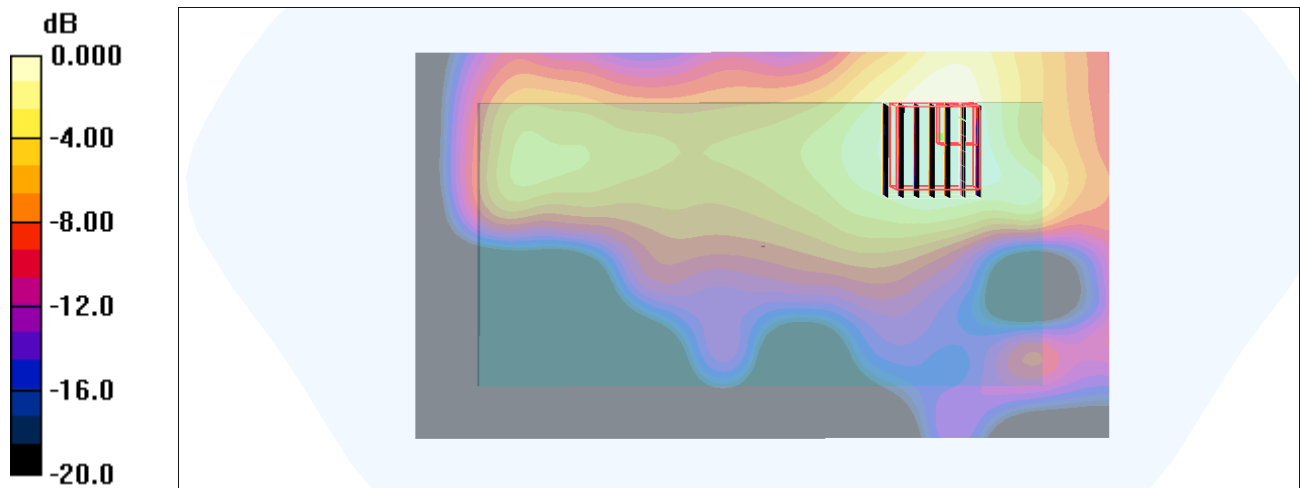
Ch36/Zoom Scan (7x7x7)/Cube 0: Measurement grid: $dx=4\text{mm}$, $dy=4\text{mm}$, $dz=1.4\text{mm}$

Reference Value = 6.32 V/m ; Power Drift = 0.047 dB

Peak SAR (extrapolated) = 0.245 W/kg

SAR(1 g) = 0.071 mW/g ; SAR(10 g) = 0.025 mW/g

Maximum value of SAR (measured) = 0.175 mW/g



0 dB = 0.175mW/g

#33_WLAN5GHz_802.11a_6Mbps_Front_1.5cm_Ch60

Communication System: 802.11a; Frequency: 5300 MHz; Duty Cycle: 1:1.146

Medium: MSL_5G_141226 Medium parameters used: $f = 5300$ MHz; $\sigma = 5.38$ mho/m; $\epsilon_r = 47.2$; $\rho = 1000$ kg/m³

Ambient Temperature : 23.4 °C ; Liquid Temperature : 22.4 °C

DASY4 Configuration:

- Probe: EX3DV4 - SN3925; ConvF(4.36, 4.36, 4.36); Calibrated: 2014/5/22
- Sensor-Surface: 1.4mm (Mechanical Surface Detection)
- Electronics: DAE3 Sn495; Calibrated: 2014/5/19
- Phantom: SAM_Right; Type: SAM; Serial: TP-1303
- ;Postprocessing SW: SEMCAD, V1.8 Build 159

Ch60/Area Scan (101x181x1): Measurement grid: dx=10mm, dy=10mm

Maximum value of SAR (interpolated) = 0.165 mW/g

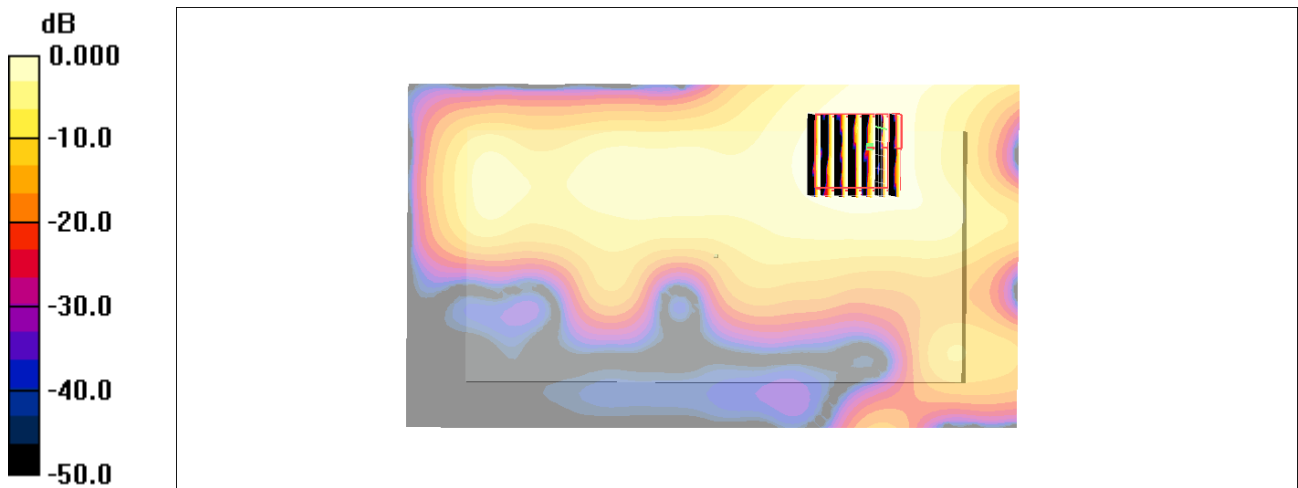
Ch60/Zoom Scan (7x7x7)/Cube 0: Measurement grid: dx=4mm, dy=4mm, dz=1.4mm

Reference Value = 6.06 V/m; Power Drift = 0.040 dB

Peak SAR (extrapolated) = 0.257 W/kg

SAR(1 g) = 0.060 mW/g; SAR(10 g) = 0.022 mW/g

Maximum value of SAR (measured) = 0.177 mW/g



0 dB = 0.177mW/g

#34_WLAN5GHz_802.11a_6Mbps_Back_1.5cm_Ch140

Communication System: 802.11a; Frequency: 5700 MHz; Duty Cycle: 1:1.146

Medium: MSL_5G_141226 Medium parameters used: $f = 5700$ MHz; $\sigma = 5.94$ mho/m; $\epsilon_r = 46.6$; $\rho = 1000$ kg/m³

Ambient Temperature : 23.4 °C; Liquid Temperature : 22.4 °C

DASY4 Configuration:

- Probe: EX3DV4 - SN3925; ConvF(4.12, 4.12, 4.12); Calibrated: 2014/5/22
- Sensor-Surface: 1.4mm (Mechanical Surface Detection)
- Electronics: DAE3 Sn495; Calibrated: 2014/5/19
- Phantom: SAM_Right; Type: SAM; Serial: TP-1303
- ;Postprocessing SW: SEMCAD, V1.8 Build 159

Ch140/Area Scan (101x181x1): Measurement grid: dx=10mm, dy=10mm

Maximum value of SAR (interpolated) = 0.092 mW/g

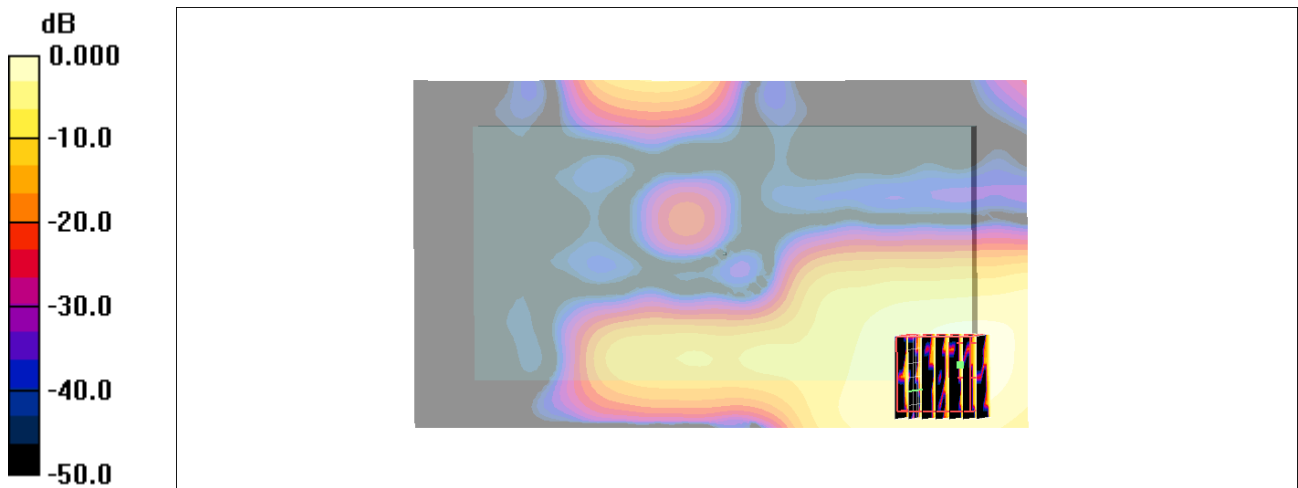
Ch140/Zoom Scan (7x7x7)/Cube 0: Measurement grid: dx=4mm, dy=4mm, dz=1.4mm

Reference Value = 4.70 V/m; Power Drift = 0.028 dB

Peak SAR (extrapolated) = 0.313 W/kg

SAR(1 g) = 0.035 mW/g; SAR(10 g) = 0.014 mW/g

Maximum value of SAR (measured) = 0.112 mW/g



0 dB = 0.112mW/g

#35_WLAN5GHz_802.11a_6Mbps_Back_1.5cm_Ch149

Communication System: 802.11a; Frequency: 5745 MHz; Duty Cycle: 1:1.146

Medium: MSL_5G_141226 Medium parameters used : $f = 5745$ MHz; $\sigma = 6.07$ mho/m; $\epsilon_r = 46.7$; $\rho = 1000$ kg/m³

Ambient Temperature : 23.4 °C; Liquid Temperature : 22.4 °C

DASY4 Configuration:

- Probe: EX3DV4 - SN3925; ConvF(4.09, 4.09, 4.09); Calibrated: 2014/5/22
- Sensor-Surface: 1.4mm (Mechanical Surface Detection)
- Electronics: DAE3 Sn495; Calibrated: 2014/5/19
- Phantom: SAM_Right; Type: SAM; Serial: TP-1303
- ;Postprocessing SW: SEMCAD, V1.8 Build 159

Ch149/Area Scan (101x181x1): Measurement grid: dx=10mm, dy=10mm

Maximum value of SAR (interpolated) = 0.146 mW/g

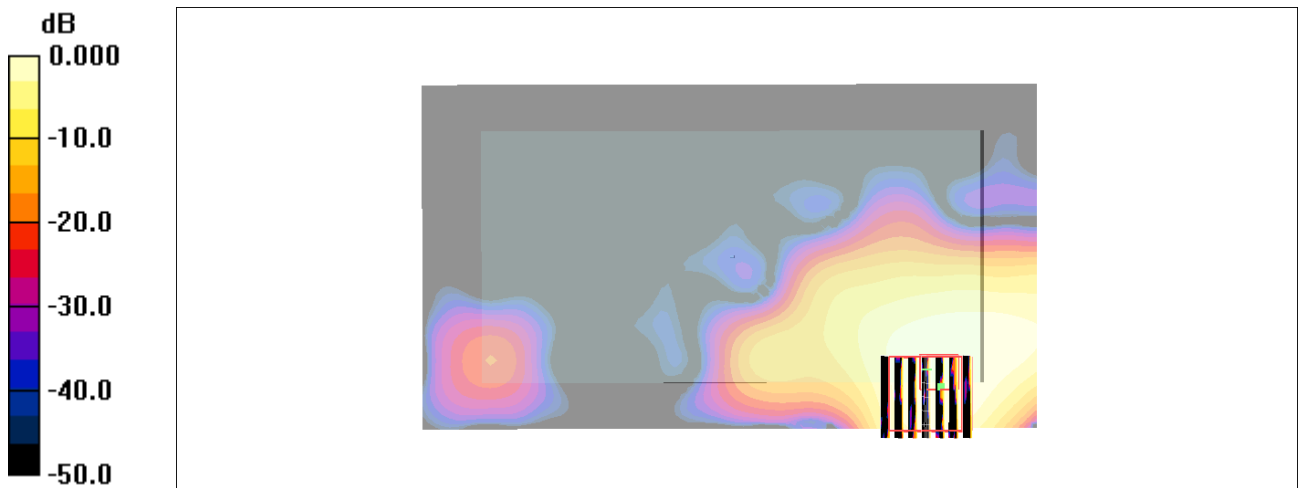
Ch149/Zoom Scan (7x7x7)/Cube 0: Measurement grid: dx=4mm, dy=4mm, dz=1.4mm

Reference Value = 4.76 V/m; Power Drift = -0.098 dB

Peak SAR (extrapolated) = 0.214 W/kg

SAR(1 g) = 0.041 mW/g; SAR(10 g) = 0.014 mW/g

Maximum value of SAR (measured) = 0.112 mW/g



0 dB = 0.112mW/g