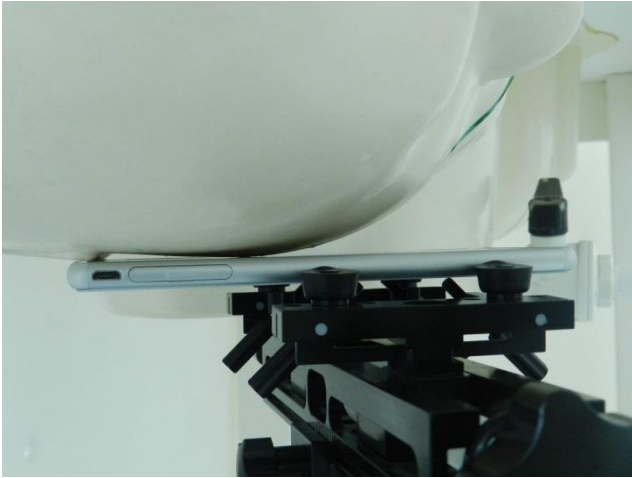
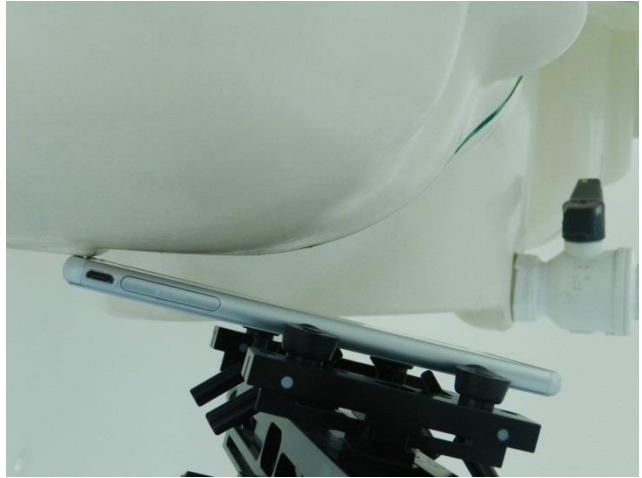
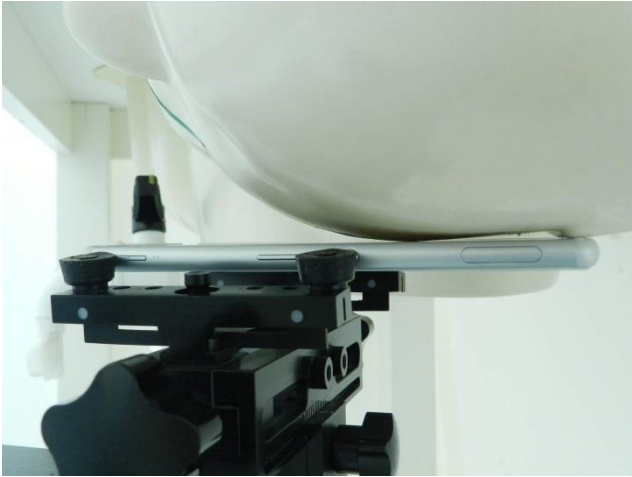


**Appendix D. SAR Test Setup Photos**

Right Cheek



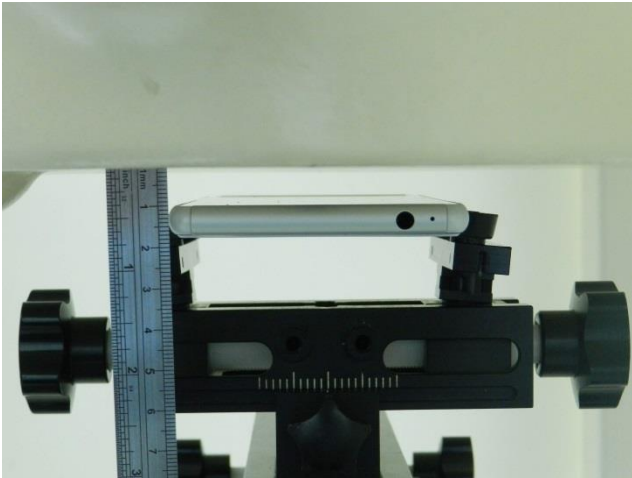
Right Tilted



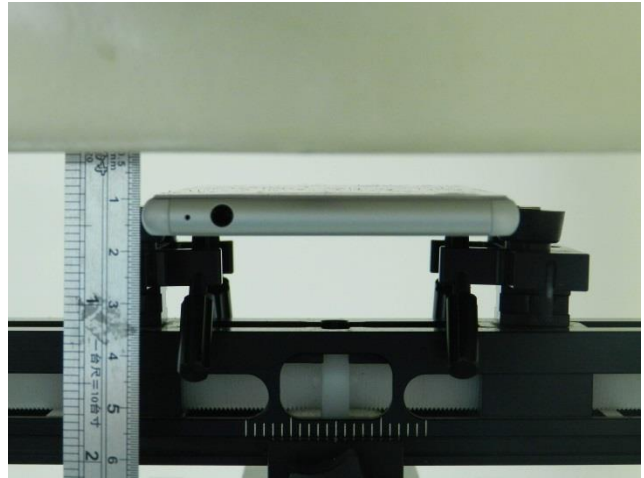
Left Cheek



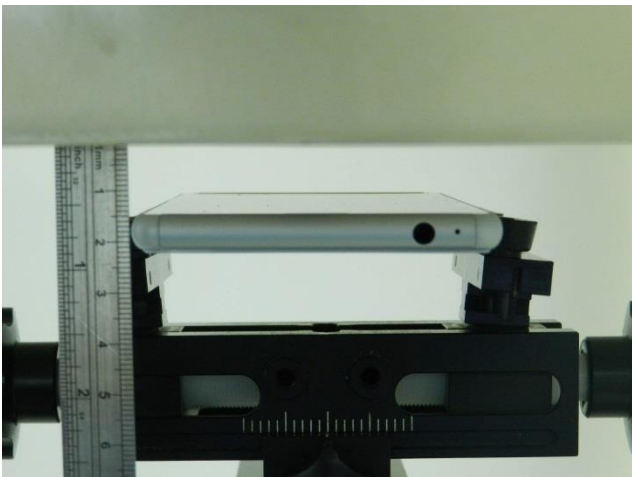
Left Tilted



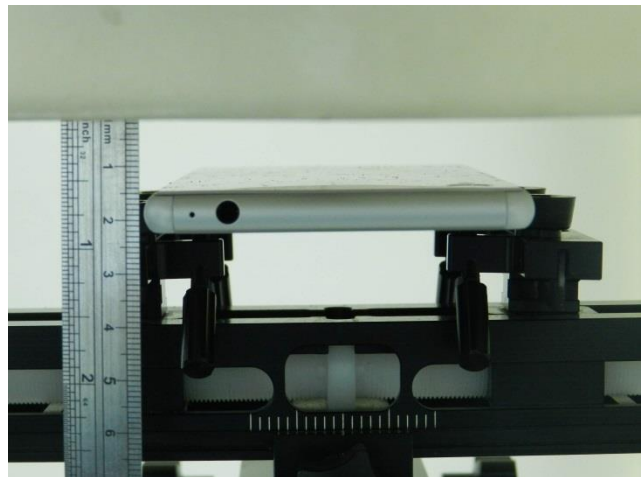
Front, Test Separation 1.0 cm



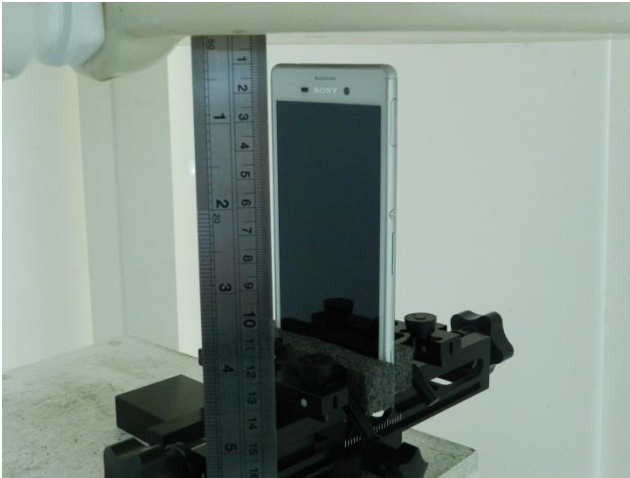
Back, Test Separation 1.0 cm



Front, Test Separation 1.5 cm



Back, Test Separation 1.5 cm



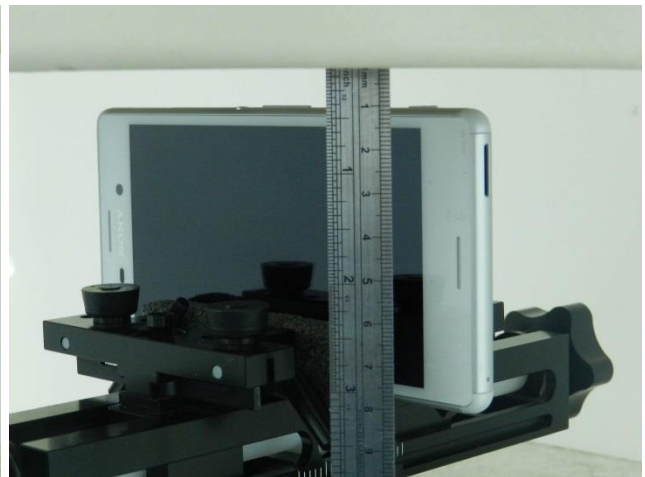
**Top Side, Test Separation 1.0 cm**



**Bottom Side, Test Separation 1.0 cm**



**Left Side, Test Separation 1.0 cm**



**Right Side, Test Separation 1.0 cm**