

## Legal information

### Sony E2104/E2105

Publication number: xxxx-xxxx.2  
This Startup guide is published by Sony Mobile Communications Inc. or its local affiliated company, without any warranty, improvements and changes to this Startup guide necessitated by typographical errors, inaccuracies of current information, or improvements to programs and/or equipment, may be made by Sony Mobile Communications Inc. at any time and without notice. Such changes will, however, be incorporated into new editions of this Startup guide. All illustrations are for illustration only and may not accurately depict the actual device.  
Remove the battery to see regulatory information such as the CE mark.  
All product and company names mentioned herein are the trademarks or registered trademarks of their respective owners. Any rights not expressly granted herein are reserved. Visit [www.sonymobile.com/us/legal/](http://www.sonymobile.com/us/legal/) for more information.  
Product compliance: This product has been manufactured by or on behalf of Sony Mobile Communications Inc., 1-8-15 Konan, Minato-ku, Tokyo 108-0075, Japan. Inquiries related to product compliance based on national legislation shall be addressed to Sony Mobile Quality Office, Sony Mobile Communications Inc., 1-8-15 Konan, Minato-ku, Tokyo 108-0075, Japan. For any service or guarantee matters, please refer to the contact details provided in the separate service or guarantee documents.  
© 2014 Sony Mobile Communications Inc. All rights reserved.

### To view the CE mark



- Remove the back cover.

### To view the regulatory compliance mark

- Open the phone dialer, then enter \*#07#.

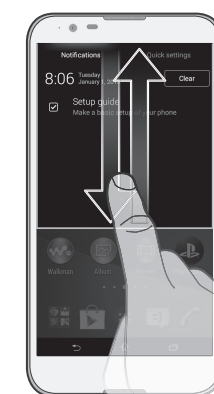
- Task navigation key
  - Open the recently used applications window and the small apps bar.
- Application screen
  - Open the Application screen.

## Basic applications and settings

- Make phone calls by dialling the number manually or by using the smart dial function.
- Use the Messaging application to send and receive text and multimedia messages.
- Go to Google Play™ to download free and paid applications for your device.
- Optimise the device settings to suit your own requirements.

## Notifications and quick settings

### To open or close the Notification panel



- To open the Notification panel, drag the status bar downwards.

## Support on the web



Visit [www.sonymobile.com/support](http://www.sonymobile.com/support) to access a range of support options for your device, including downloads, troubleshooting tips and a User guide.

## Transferring your contacts

Xperia™ Transfer is an application that helps you to collect contacts from your old device and transfer them to your new device. Xperia™ Transfer, which you can access from within the PC Companion and the Sony Bridge for Mac computer programs, supports mobile devices that run on several operating systems, including iOS, Android™, Windows® and BlackBerry™.

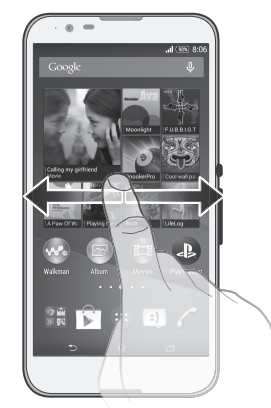
To use Xperia™ Transfer, you need:

- An Internet-connected computer.
- A USB cable for your old device.
- A USB cable for your new Android™ device.
- Your old device.
- Your new Android™ device.

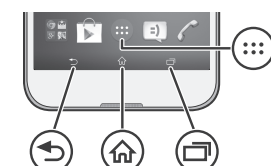
### To transfer contacts to your new device

- 1 Search and download PC Companion (on a PC) or Bridge for Mac (on a Mac computer) from [www.sonymobile.com](http://www.sonymobile.com) if the application is not already installed.
- 2 After successful installation, open the PC Companion application or the Sony Bridge for Mac application, then click *Xperia™ Transfer* and follow the relevant instructions to transfer your contacts.

## Finding your way



## Using the keys



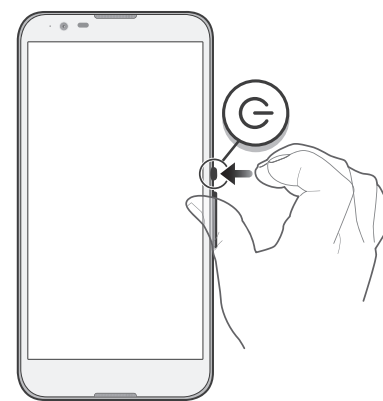
- Back navigation key
  - Go back to the previous screen within an application or close the application.
- Home navigation key
  - Exit an application and go back to the Home screen.

## Basics

### Turning on the device

Make sure that the battery is charged for at least 30 minutes before you turn on the device for the first time.

### To turn on the device



- 1 Press and hold down the power key until the notification light flashes once.
- 2 Wait a while for the device to start.

### Waking up the screen

#### To activate the screen

- Briefly press the power key .

## Setting up your device

### Setup guide

The first time you start your device, a setup guide opens to help you configure basic settings, sign in to some accounts (for example, your Google™ account), and personalise your device. You can also manually access the setup guide at a later stage.

#### To access the setup guide manually

- 1 From the Home screen, tap .
- 2 Tap > Setup guide.

### Accessing settings

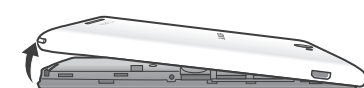
View and change settings for your device from the Settings menu. The Settings menu is accessible from both the Application screen and the Quick settings panel.

#### To access your device settings

- 1 From your Home screen, tap .
- 2 Find and tap .

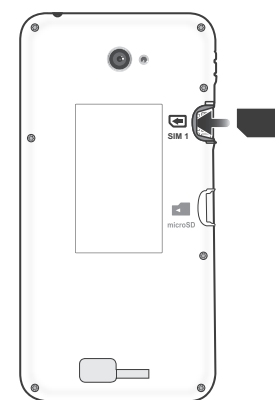
## Assembly

### To remove the back cover

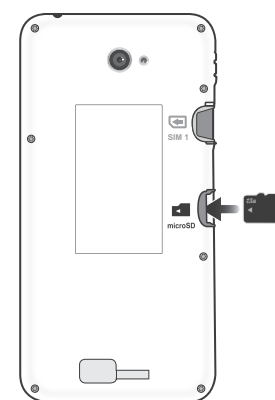


### To insert the micro SIM card

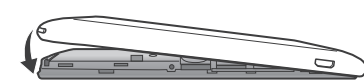
- If you insert a micro SIM card while the device is powered on, the device restarts automatically.



### To insert a memory card



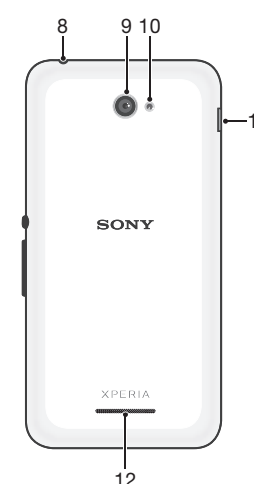
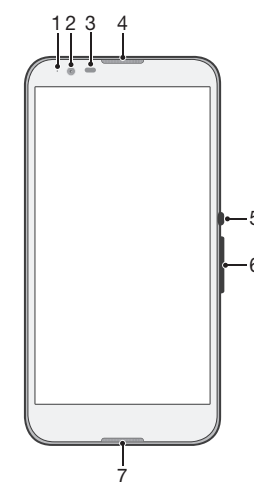
### To attach the back cover



## Important Information

Before you use your device, please read the *Important Information* provided in your device regarding warranty, safety and handling information.

## Overview



1. Charging/Notification light
2. Front camera lens
3. Proximity/Light sensor
4. Ear Speaker
5. Power key
6. Volume/Zoom key
7. Microphone
8. Headset jack
9. Main camera lens
10. Camera light
11. Port for charger/USB cable
12. Loudspeaker