

20160729_SystemPerformanceCheck-D2600V2 SN 1036

Frequency: 2600 MHz; Duty Cycle: 1:1; Room Ambient Temperature: 24.0°C; Liquid Temperature: 23.0°C

Medium parameters used: $f = 2600 \text{ MHz}$; $\sigma = 1.967 \text{ S/m}$; $\epsilon_r = 39.307$; $\rho = 1000 \text{ kg/m}^3$

DASY5 Configuration:

- Area Scan Setting: Find Secondary Maximum Within: 2.0 dB and with a peak SAR value greater than 0.0012W/kg
- Electronics: DAE4 Sn1434; Calibrated: 4/15/2016
- Probe: EX3DV4 - SN3929; ConvF(6.78, 6.78, 6.78); Calibrated: 3/22/2016;
- Sensor-Surface: 2.5mm (Mechanical Surface Detection (Locations From Previous Scan Used)), Sensor-Surface: 2.5mm (Mechanical Surface Detection)
- Phantom: SAM; Type: QD000P40CD; Serial: TP 1751

Head/Pin=100 mW/Area Scan (8x8x1): Measurement grid: dx=12mm, dy=12mm

Maximum value of SAR (measured) = 7.41 W/kg

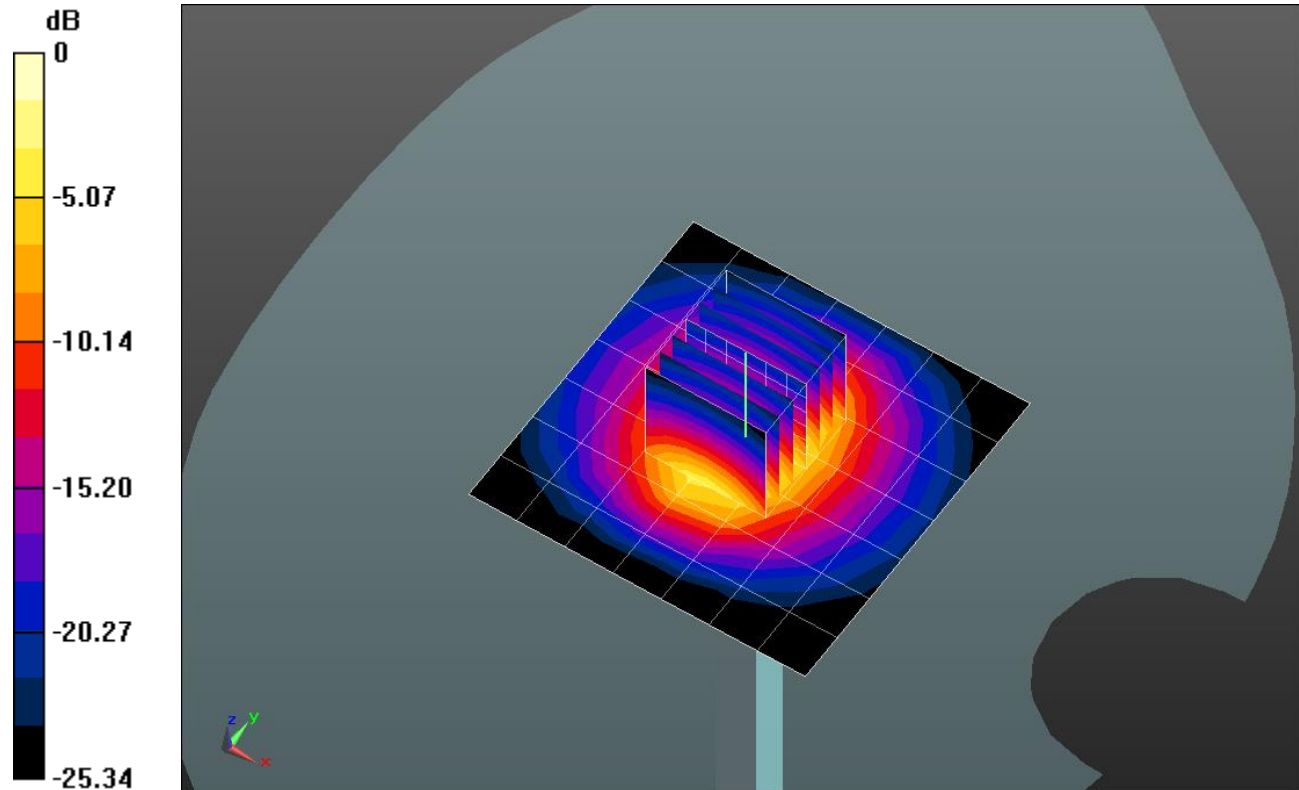
Head/Pin=100 mW/Zoom Scan (7x7x7)/Cube 0: Measurement grid: dx=5mm, dy=5mm, dz=5mm

Reference Value = 60.048 V/m; Power Drift = 0.07 dB

Peak SAR (extrapolated) = 13.3 W/kg

SAR(1 g) = 5.83 W/kg; SAR(10 g) = 2.54 W/kg

Maximum value of SAR (measured) = 8.60 W/kg



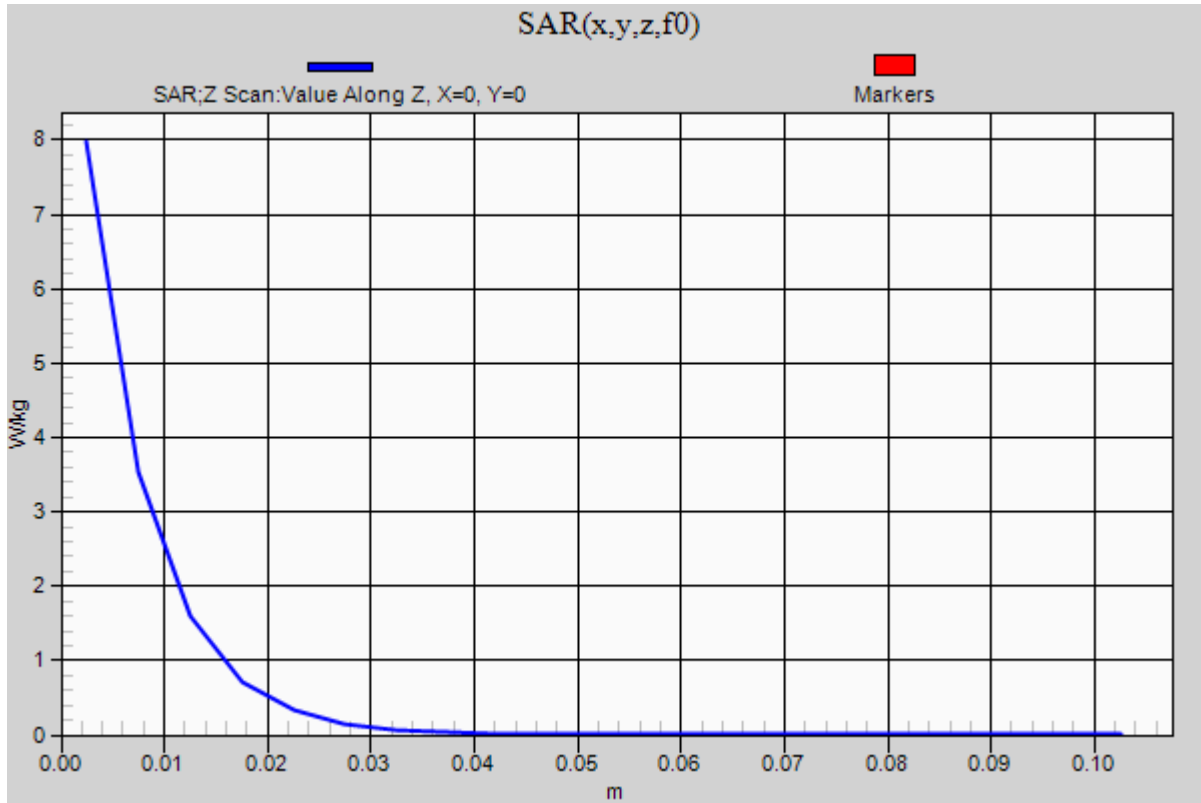
0 dB = 8.60 W/kg = 9.34 dBW/kg

20160729_SystemPerformanceCheck-D2600V2 SN 1036

Frequency: 2600 MHz; Duty Cycle: 1:1

Head/Pin=100 mW/Z Scan (1x1x21): Measurement grid: dx=20mm, dy=20mm, dz=5mm

Maximum value of SAR (measured) = 7.98 W/kg



20160804_SystemPerformanceCheck-D2600V2 SN 1036

Frequency: 2600 MHz; Duty Cycle: 1:1; Room Ambient Temperature: 24.0°C; Liquid Temperature: 23.0°C

Medium parameters used: $f = 2600$ MHz; $\sigma = 2.221$ S/m; $\epsilon_r = 54.016$; $\rho = 1000$ kg/m³

DASY5 Configuration:

- Area Scan Setting: Find Secondary Maximum Within: 2.0 dB and with a peak SAR value greater than 0.0012W/kg
- Electronics: DAE4 Sn1257; Calibrated: 9/16/2015
- Probe: EX3DV4 - SN3772; ConvF(6.38, 6.38, 6.38); Calibrated: 2/23/2016;
- Sensor-Surface: 2.5mm (Mechanical Surface Detection (Locations From Previous Scan Used)), Sensor-Surface: 2.5mm (Mechanical Surface Detection)
- Phantom: ELI A v5.0; Type: QDOVA002AA; Serial: S/n:1198

Body/Pin=100 mW/Area Scan (8x8x1): Measurement grid: dx=12mm, dy=12mm

Maximum value of SAR (measured) = 7.02 W/kg

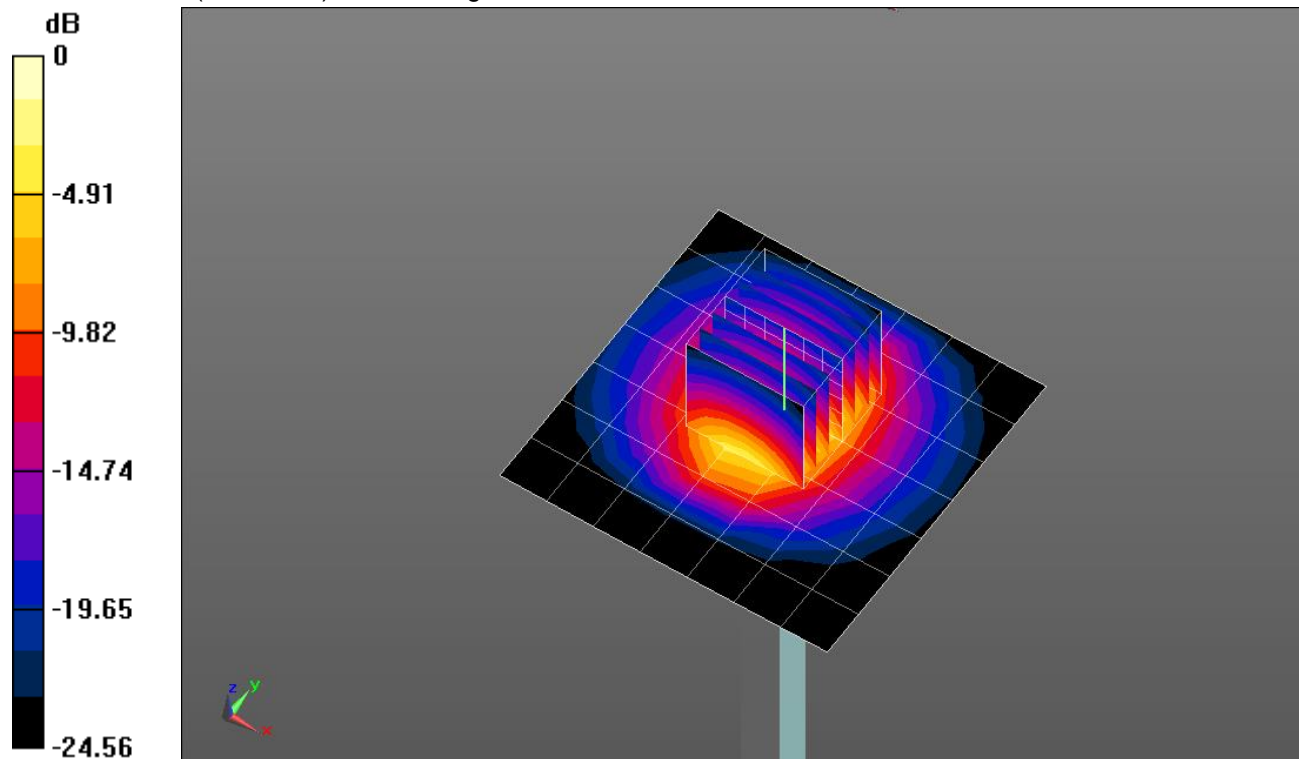
Body/Pin=100 mW/Zoom Scan (7x7x7)/Cube 0: Measurement grid: dx=5mm, dy=5mm, dz=5mm

Reference Value = 57.313 V/m; Power Drift = 0.05 dB

Peak SAR (extrapolated) = 12.4 W/kg

SAR(1 g) = 5.68 W/kg; SAR(10 g) = 2.49 W/kg

Maximum value of SAR (measured) = 8.24 W/kg



0 dB = 8.24 W/kg = 9.16 dBW/kg

20160804_SystemPerformanceCheck-D2600V2 SN 1036

Frequency: 2600 MHz; Duty Cycle: 1:1

Body/Pin=100 mW/Z Scan (1x1x21): Measurement grid: dx=20mm, dy=20mm, dz=5mm
Maximum value of SAR (measured) = 7.14 W/kg

