

# Measurement Report for GSM 850, CHEEK, Normal, CELL Main1

## Exposure Conditions

Band	GSM 850	TSL Permittivity	41.3
Frequency [MHz]   Channel Number	836.6   190	TSL Conductivity [S/m]	0.945
Group   UID	GSM   10028-DAC	Phantom Section   TSL	RightHead   HSL
Conversion Factor	10.14	Test Distance [mm]	0.00
Communication Configuration	GPRS-FDD (TDMA, GMSK, TN 0-1-2-3)		

## Hardware Setup

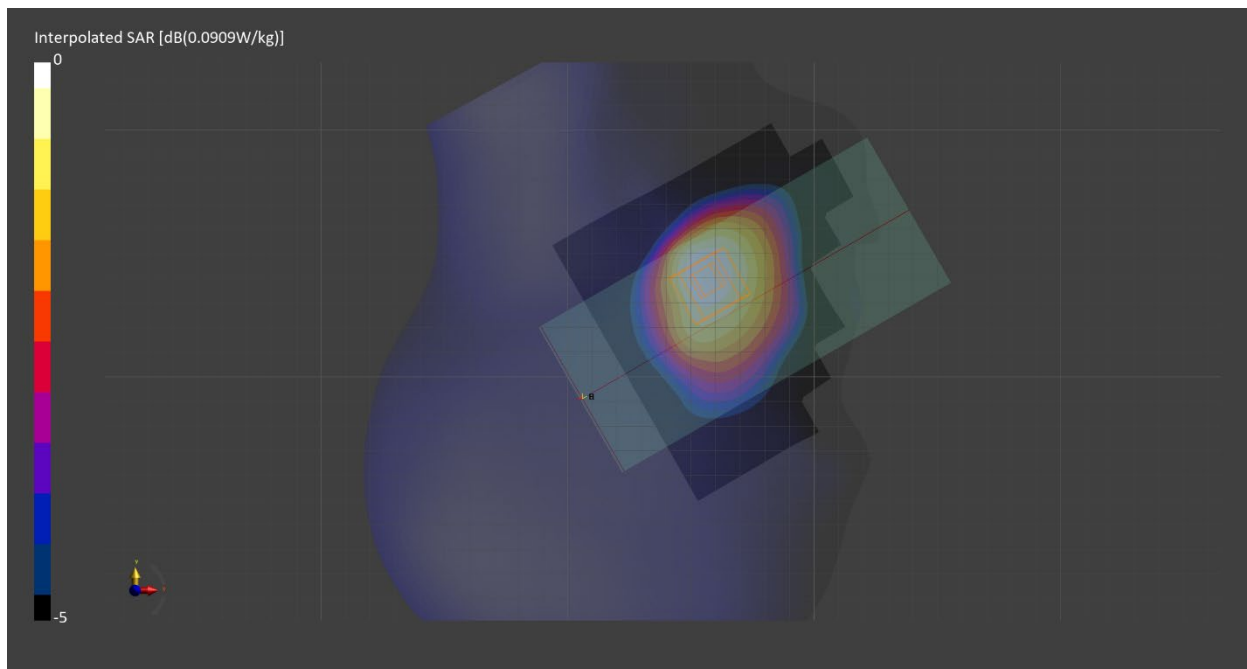
Probe   Calibration Date	EX3DV4 - SN7710   2023-02-03	Phantom	Twin-SAM V8.0 (30deg probe tilt) - SN2084
DAE   Calibration Date	DAE4 Sn1715   2023-01-23	TSL   Meas. Date	HBBL600-10000V6   2023-Jul-06

## Scans Setup

	Area Scan	Zoom Scan
Grid Extents [mm]	120.0 x 210.0	30.0 x 30.0 x 30.0
Grid Steps [mm]	15.0 x 15.0	6.0 x 6.0 x 1.5
Sensor Surface [mm]	3.0	1.4
Graded Grid	n/a	Yes
M2/M1 [%]		95.2
Dist 3dB Peak [mm]		22.1

## Measurement Results

	Area Scan	Zoom Scan
psSAR1g [W/Kg]	0.080	<b>0.082</b>
psSAR10g [W/Kg]	0.054	<b>0.063</b>
Power Drift [dB]	n/a	0.04



# Measurement Report for GSM 850, BACK, Normal, CELL Main1

## Exposure Conditions

Band	GSM 850	TSL Permittivity	41.3
Frequency [MHz]   Channel Number	836.6   190	TSL Conductivity [S/m]	0.945
Group   UID	GSM   10028-DAC	Phantom Section   TSL	Flat   HSL
Conversion Factor	10.14	Test Distance [mm]	10.00
Communication Configuration	GPRS-FDD (TDMA, GMSK, TN 0-1-2-3)		

## Hardware Setup

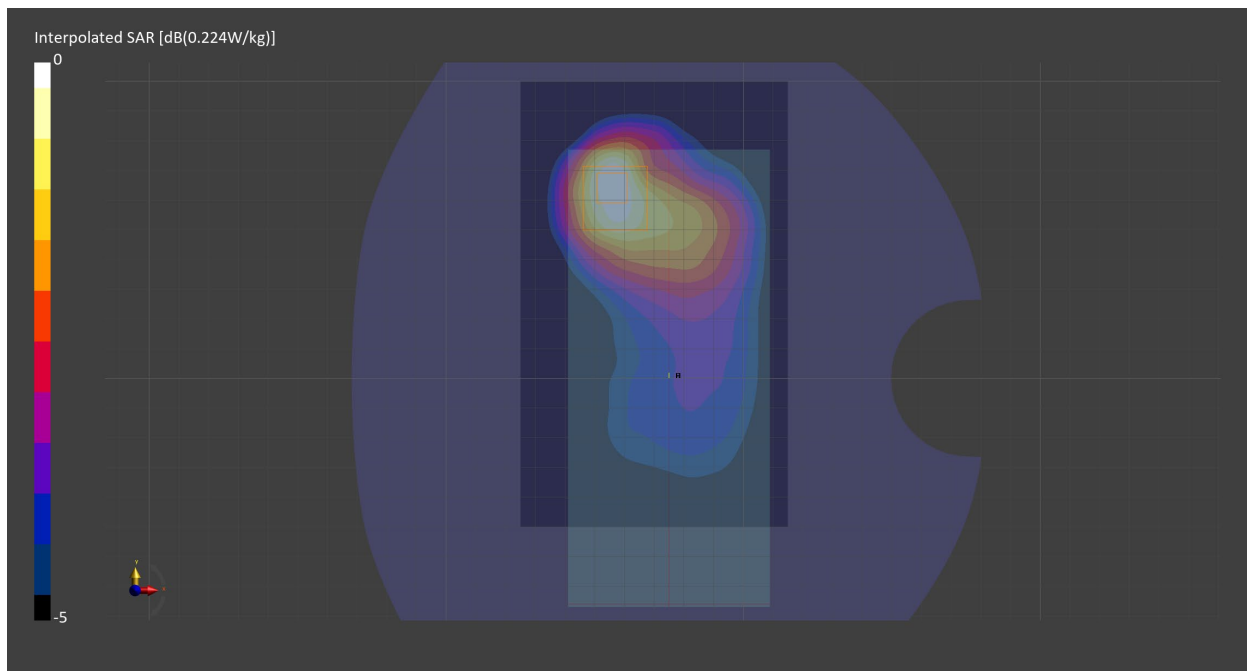
Probe   Calibration Date	EX3DV4 - SN7710   2023-02-03	Phantom	Twin-SAM V8.0 (30deg probe tilt) - SN2084
DAE   Calibration Date	DAE4 Sn1715   2023-01-23	TSL   Meas. Date	HBBL600-10000V6   2023-Jul-06

## Scans Setup

	Area Scan	Zoom Scan
Grid Extents [mm]	90.0 x 150.0	30.0 x 30.0 x 30.0
Grid Steps [mm]	15.0 x 15.0	6.0 x 6.0 x 1.5
Sensor Surface [mm]	3.0	1.4
Graded Grid	n/a	Yes
M2/M1 [%]		81.8
Dist 3dB Peak [mm]		15.7

## Measurement Results

	Area Scan	Zoom Scan
psSAR1g [W/Kg]	0.192	<b>0.191</b>
psSAR10g [W/Kg]	0.125	<b>0.115</b>
Power Drift [dB]	n/a	-0.08



# Measurement Report for GSM 850, BACK, Normal, CELL Main1

## Exposure Conditions

Band	GSM 850	TSL Permittivity	41.3
Frequency [MHz]   Channel Number	836.6   190	TSL Conductivity [S/m]	0.945
Group   UID	GSM   10024-DAC	Phantom Section   TSL	Flat   HSL
Conversion Factor	10.14	Test Distance [mm]	10.00
Communication Configuration	GPRS-FDD (TDMA, GMSK, TN 0-1)		

## Hardware Setup

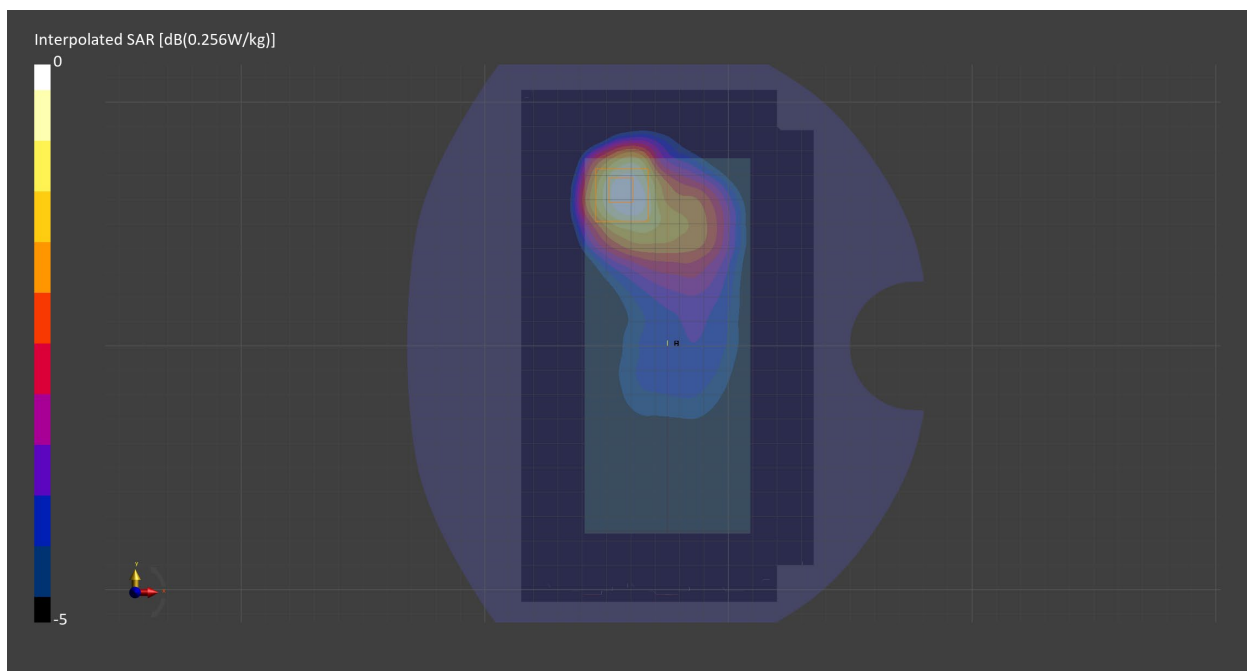
Probe   Calibration Date	EX3DV4 - SN7710   2023-02-03	Phantom	Twin-SAM V8.0 (30deg probe tilt) - SN2084
DAE   Calibration Date	DAE4 Sn1715   2023-01-23	TSL   Meas. Date	HBBL600-10000V6   2023-Jul-06

## Scans Setup

	Area Scan	Zoom Scan
Grid Extents [mm]	120.0 x 210.0	30.0 x 30.0 x 30.0
Grid Steps [mm]	15.0 x 15.0	6.0 x 6.0 x 1.5
Sensor Surface [mm]	3.0	1.4
Graded Grid	n/a	Yes
M2/M1 [%]		81.6
Dist 3dB Peak [mm]		15.6

## Measurement Results

	Area Scan	Zoom Scan
psSAR1g [W/Kg]	0.222	<b>0.225</b>
psSAR10g [W/Kg]	0.146	<b>0.134</b>
Power Drift [dB]	n/a	0.00



# Measurement Report for PCS 1900, CHEEK, Normal, CELL Main2

## Exposure Conditions

Band	PCS 1900	TSL Permittivity	38.9
Frequency [MHz]   Channel Number	1909.8   810	TSL Conductivity [S/m]	1.44
Group   UID	GSM   10028-DAC	Phantom Section   TSL	RightHead   HSL
Conversion Factor	8.18	Test Distance [mm]	0.00
Communication Configuration	GPRS-FDD (TDMA, GMSK, TN 0-1-2-3)		

## Hardware Setup

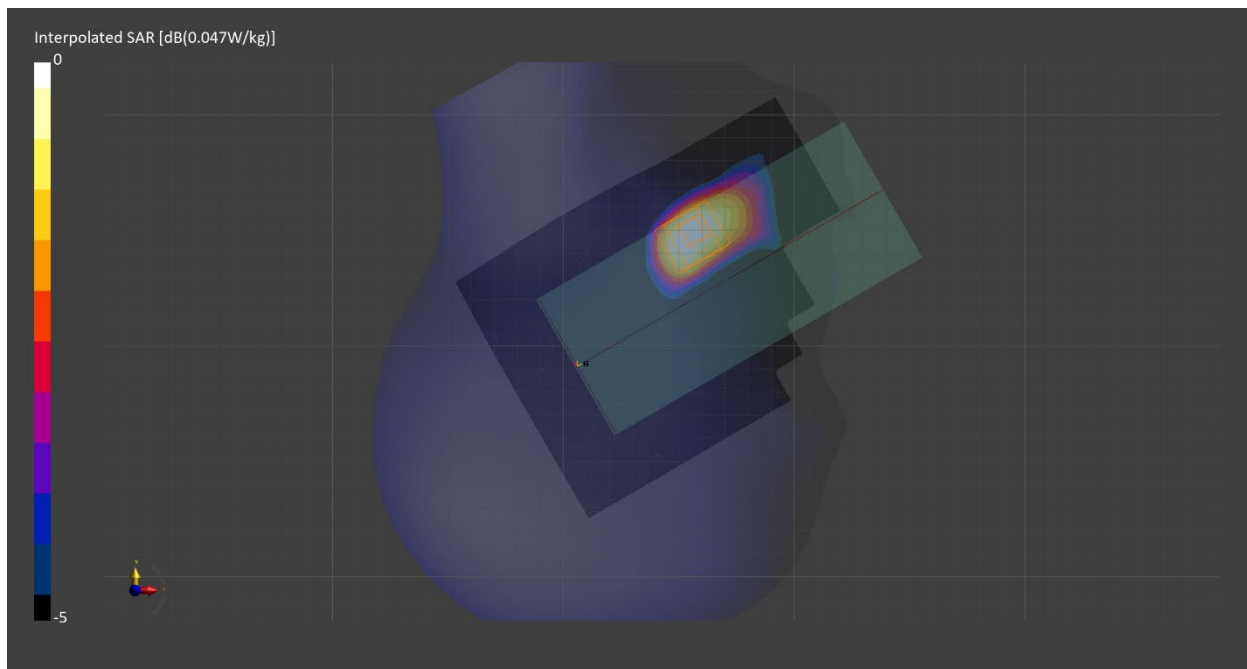
Probe   Calibration Date	EX3DV4 - SN7711   2023-03-29	Phantom	Twin-SAM V8.0 (30deg probe tilt) - SN2082
DAE   Calibration Date	DAE4 Sn1716   2023-03-16	TSL   Meas. Date	HBBL-600-10000   2023-Jul-07

## Scans Setup

	Area Scan	Zoom Scan
Grid Extents [mm]	120.0 x 210.0	30.0 x 30.0 x 30.0
Grid Steps [mm]	15.0 x 15.0	6.0 x 6.0 x 1.5
Sensor Surface [mm]	3.0	1.4
Graded Grid	n/a	Yes
M2/M1 [%]		84.7
Dist 3dB Peak [mm]		7.3

## Measurement Results

	Area Scan	Zoom Scan
psSAR1g [W/Kg]	0.052	<b>0.041</b>
psSAR10g [W/Kg]	0.023	<b>0.025</b>
Power Drift [dB]	n/a	-0.02



# Measurement Report for PCS 1900, BACK, Normal, CELL Main2

## Exposure Conditions

Band	PCS 1900	TSL Permittivity	38.9
Frequency [MHz]   Channel Number	1909.8   810	TSL Conductivity [S/m]	1.44
Group   UID	GSM   10028-DAC	Phantom Section   TSL	Flat   HSL
Conversion Factor	8.18	Test Distance [mm]	10.00
Communication Configuration	GPRS-FDD (TDMA, GMSK, TN 0-1-2-3)		

## Hardware Setup

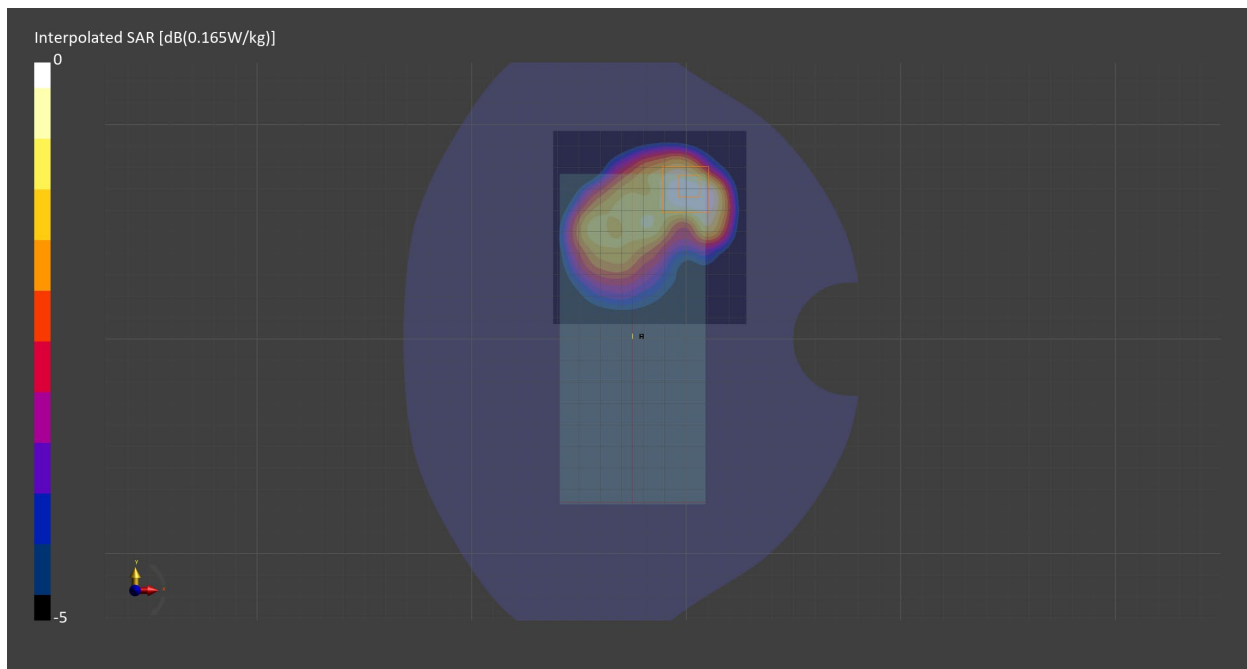
Probe   Calibration Date	EX3DV4 - SN7711   2023-03-29	Phantom	Twin-SAM V8.0 (30deg probe tilt) - SN2082
DAE   Calibration Date	DAE4 Sn1716   2023-03-16	TSL   Meas. Date	HBBL-600-10000   2023-Jul-07

## Scans Setup

	Area Scan	Zoom Scan
Grid Extents [mm]	90.0 x 90.0	30.0 x 30.0 x 30.0
Grid Steps [mm]	15.0 x 15.0	6.0 x 6.0 x 1.5
Sensor Surface [mm]	3.0	1.4
Graded Grid	n/a	Yes
M2/M1 [%]		82.9
Dist 3dB Peak [mm]		11.9

## Measurement Results

	Area Scan	Zoom Scan
psSAR1g [W/Kg]	0.138	<b>0.150</b>
psSAR10g [W/Kg]	0.082	<b>0.085</b>
Power Drift [dB]	n/a	-0.03



# Measurement Report for PCS 1900, EDGE BOTTOM, Normal, CELL Main2

## Exposure Conditions

Band	PCS 1900	TSL Permittivity	38.9
Frequency [MHz]   Channel Number	1909.8   810	TSL Conductivity [S/m]	1.44
Group   UID	GSM   10028-DAC	Phantom Section   TSL	Flat   HSL
Conversion Factor	8.18	Test Distance [mm]	10.00
Communication Configuration	GPRS-FDD (TDMA, GMSK, TN 0-1-2-3)		

## Hardware Setup

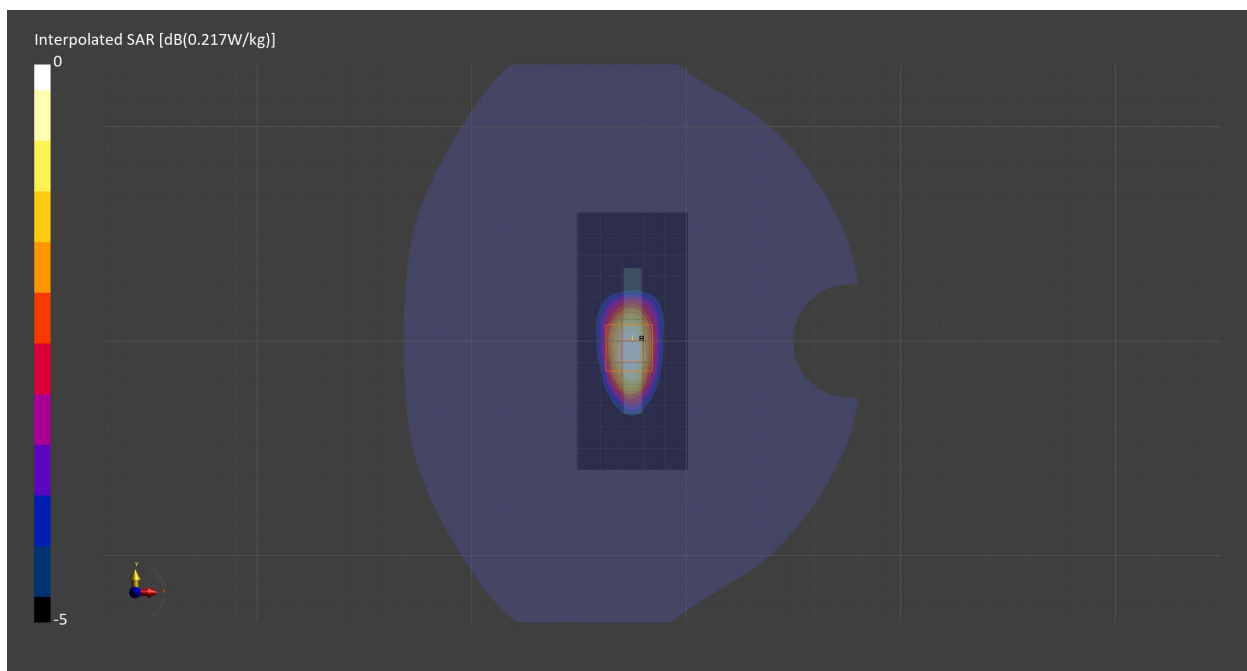
Probe   Calibration Date	EX3DV4 - SN7711   2023-03-29	Phantom	Twin-SAM V8.0 (30deg probe tilt) - SN2082
DAE   Calibration Date	DAE4 Sn1716   2023-03-16	TSL   Meas. Date	HBBL-600-10000   2023-Jul-07

## Scans Setup

	Area Scan	Zoom Scan
Grid Extents [mm]	51.6 x 120.0	30.0 x 30.0 x 30.0
Grid Steps [mm]	8.6 x 15.0	6.0 x 6.0 x 1.5
Sensor Surface [mm]	3.0	1.4
Graded Grid	n/a	Yes
M2/M1 [%]		83.7
Dist 3dB Peak [mm]		12.0

## Measurement Results

	Area Scan	Zoom Scan
psSAR1g [W/Kg]	0.175	<b>0.176</b>
psSAR10g [W/Kg]	0.096	<b>0.098</b>
Power Drift [dB]	n/a	0.01



# Measurement Report for PCS 1900, EDGE BOTTOM, Normal, CELL Main2

## Exposure Conditions

Band	PCS 1900	TSL Permittivity	38.9
Frequency [MHz]   Channel Number	1909.8   810	TSL Conductivity [S/m]	1.44
Group   UID	GSM   10024-DAC	Phantom Section   TSL	Flat   HSL
Conversion Factor	8.18	Test Distance [mm]	10.00
Communication Configuration	GPRS-FDD (TDMA, GMSK, TN 0-1)		

## Hardware Setup

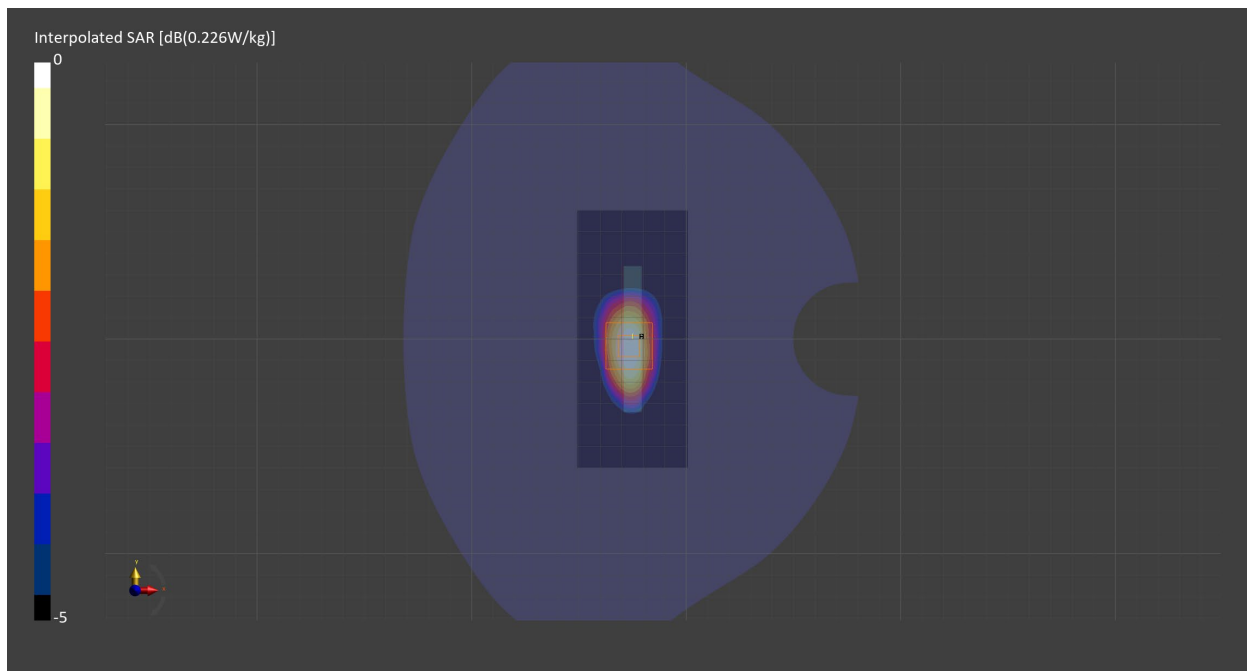
Probe   Calibration Date	EX3DV4 - SN7711   2023-03-29	Phantom	Twin-SAM V8.0 (30deg probe tilt) - SN2082
DAE   Calibration Date	DAE4 Sn1716   2023-03-16	TSL   Meas. Date	HBBL-600-10000   2023-Jul-07

## Scans Setup

	Area Scan	Zoom Scan
Grid Extents [mm]	51.6 x 120.0	30.0 x 30.0 x 30.0
Grid Steps [mm]	8.6 x 15.0	6.0 x 6.0 x 1.5
Sensor Surface [mm]	3.0	1.4
Graded Grid	n/a	Yes
M2/M1 [%]		83.4
Dist 3dB Peak [mm]		12.0

## Measurement Results

	Area Scan	Zoom Scan
psSAR1g [W/Kg]	0.183	<b>0.184</b>
psSAR10g [W/Kg]	0.101	<b>0.102</b>
Power Drift [dB]	n/a	-0.04



# Measurement Report for Band 5, CHEEK, Normal, CELL Main1

## Exposure Conditions

Band	Band 5	TSL Permittivity	41.3
Frequency [MHz]   Channel Number	836.6   4183	TSL Conductivity [S/m]	0.945
Group   UID	WCDMA   10011-CAC	Phantom Section   TSL	RightHead   HSL
Conversion Factor	10.14	Test Distance [mm]	0.00
Communication Configuration	UMTS-FDD (WCDMA)		

## Hardware Setup

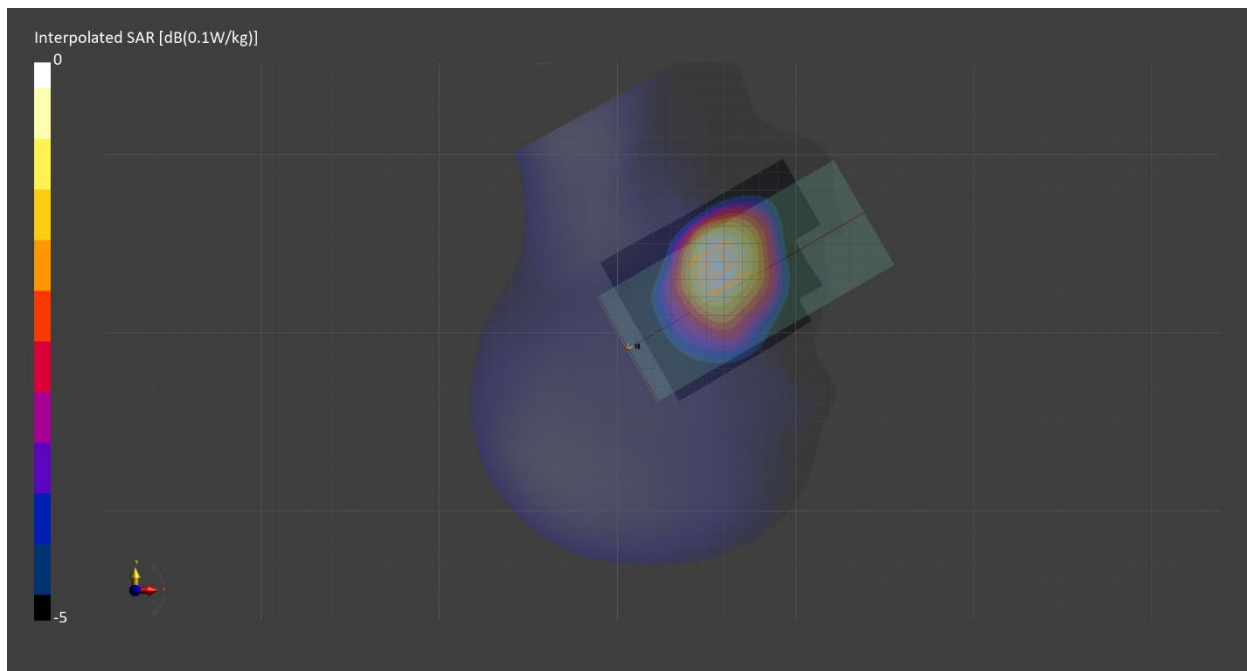
Probe   Calibration Date	EX3DV4 - SN7710   2023-02-03	Phantom	Twin-SAM V8.0 (30deg probe tilt) - SN2084
DAE   Calibration Date	DAE4 Sn1715   2023-01-23	TSL   Meas. Date	HBBL600-10000V6   2023-Jul-06

## Scans Setup

	Area Scan	Zoom Scan
Grid Extents [mm]	90.0 x 120.0	30.0 x 30.0 x 30.0
Grid Steps [mm]	15.0 x 15.0	6.0 x 6.0 x 1.5
Sensor Surface [mm]	3.0	1.4
Graded Grid	n/a	Yes
M2/M1 [%]		93.9
Dist 3dB Peak [mm]		23.5

## Measurement Results

	Area Scan	Zoom Scan
psSAR1g [W/Kg]	0.087	<b>0.093</b>
psSAR10g [W/Kg]	0.060	<b>0.071</b>
Power Drift [dB]	n/a	-0.03





# Measurement Report for Band 5, BACK, Normal, CELL Main1

## Exposure Conditions

Band	Band 5	TSL Permittivity	41.3
Frequency [MHz]   Channel Number	836.6   4183	TSL Conductivity [S/m]	0.945
Group   UID	WCDMA   10011-CAC	Phantom Section   TSL	Flat   HSL
Conversion Factor	10.14	Test Distance [mm]	10.00
Communication Configuration	UMTS-FDD (WCDMA)		

## Hardware Setup

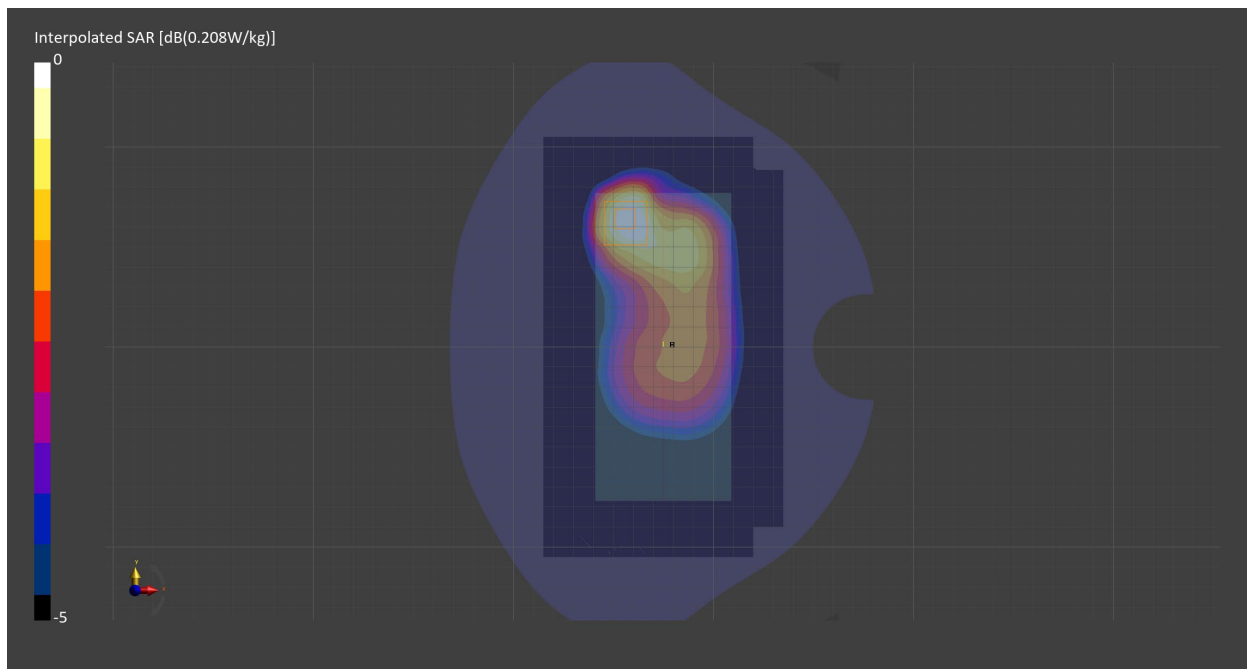
Probe   Calibration Date	EX3DV4 - SN7710   2023-02-03	Phantom	Twin-SAM V8.0 (30deg probe tilt) - SN2084
DAE   Calibration Date	DAE4 Sn1715   2023-01-23	TSL   Meas. Date	HBBL600-10000V6   2023-Jul-06

## Scans Setup

	Area Scan	Zoom Scan
Grid Extents [mm]	120.0 x 210.0	30.0 x 30.0 x 30.0
Grid Steps [mm]	15.0 x 15.0	6.0 x 6.0 x 1.5
Sensor Surface [mm]	3.0	1.4
Graded Grid	n/a	Yes
M2/M1 [%]		81.2
Dist 3dB Peak [mm]		15.6

## Measurement Results

	Area Scan	Zoom Scan
psSAR1g [W/Kg]	0.181	<b>0.184</b>
psSAR10g [W/Kg]	0.120	<b>0.110</b>
Power Drift [dB]	n/a	-0.01



# Measurement Report for Band 5, CHEEK, Normal, CELL Main1

## Exposure Conditions

Band	Band 5	TSL Permittivity	41.3
Frequency [MHz]   Channel Number	836.5   20525	TSL Conductivity [S/m]	0.945
Group   UID	LTE-FDD   10175-CAH	Phantom Section   TSL	RightHead   HSL
Conversion Factor	10.14	Test Distance [mm]	0.00
Communication Configuration	LTE-FDD (SC-FDMA, 1 RB, 10 MHz, QPSK) RBPosition:Mid AntennaCfg:SISO		

## Hardware Setup

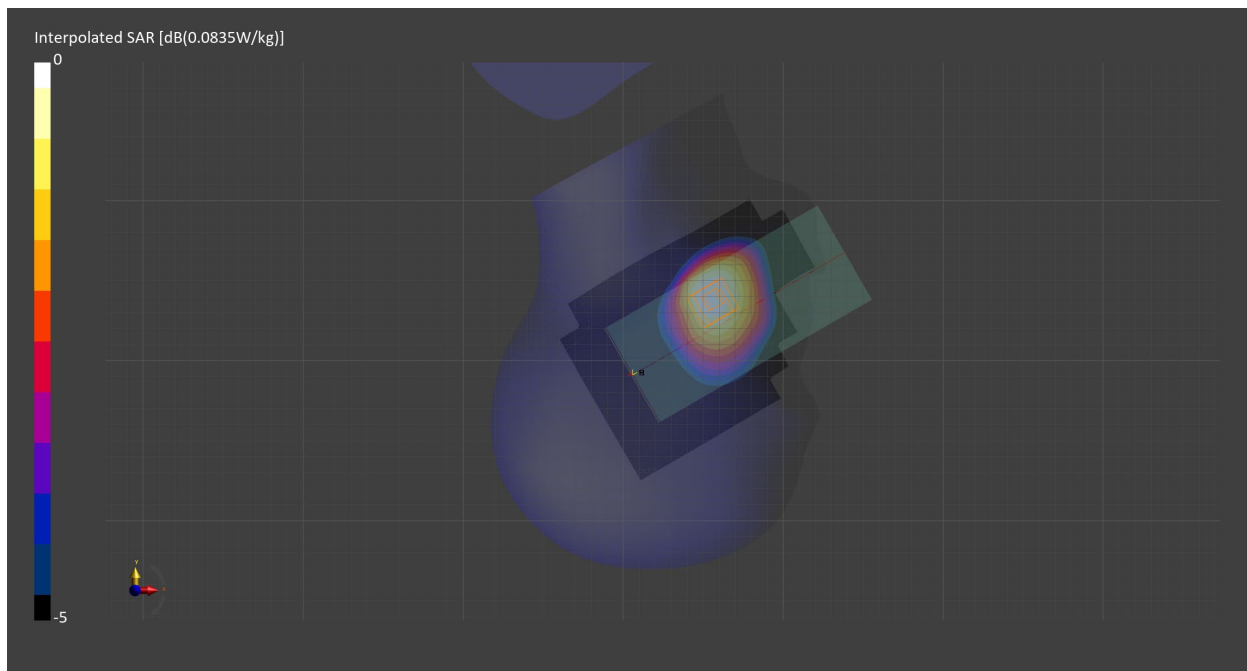
Probe   Calibration Date	EX3DV4 - SN7710   2023-02-03	Phantom	Twin-SAM V8.0 (30deg probe tilt) - SN2084
DAE   Calibration Date	DAE4 Sn1715   2023-01-23	TSL   Meas. Date	HBBL600-10000V6   2023-Jul-06

## Scans Setup

	Area Scan	Zoom Scan
Grid Extents [mm]	120.0 x 210.0	30.0 x 30.0 x 30.0
Grid Steps [mm]	15.0 x 15.0	6.0 x 6.0 x 1.5
Sensor Surface [mm]	3.0	1.4
Graded Grid	n/a	Yes
M2/M1 [%]		93.6
Dist 3dB Peak [mm]		> 15.0

## Measurement Results

	Area Scan	Zoom Scan
psSAR1g [W/Kg]	0.064	<b>0.066</b>
psSAR10g [W/Kg]	0.044	<b>0.051</b>
Power Drift [dB]	n/a	0.04



# Measurement Report for Band 5, BACK, Normal, CELL Main1

## Exposure Conditions

Band	Band 5	TSL Permittivity	41.3
Frequency [MHz]   Channel Number	836.5   20525	TSL Conductivity [S/m]	0.945
Group   UID	LTE-FDD   10175-CAH	Phantom Section   TSL	Flat   HSL
Conversion Factor	10.14	Test Distance [mm]	10.00
Communication Configuration	LTE-FDD (SC-FDMA, 1 RB, 10 MHz, QPSK) RBPosition:Mid AntennaCfg:SISO		

## Hardware Setup

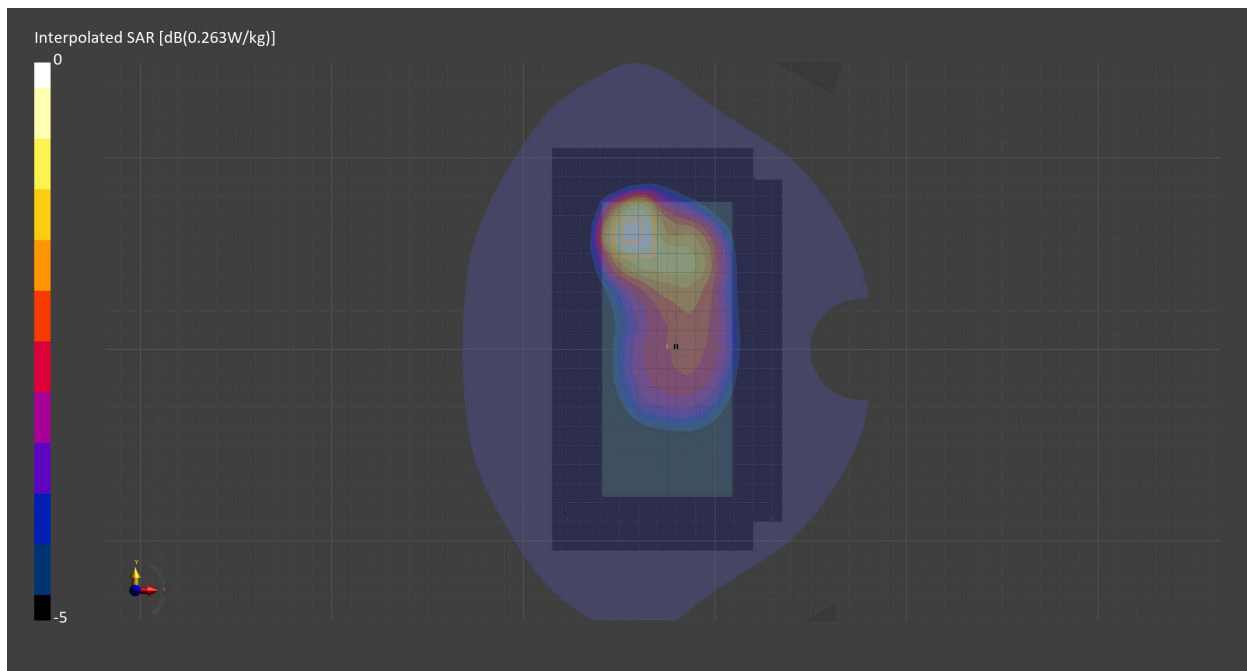
Probe   Calibration Date	EX3DV4 - SN7710   2023-02-03	Phantom	Twin-SAM V8.0 (30deg probe tilt) - SN2084
DAE   Calibration Date	DAE4 Sn1715   2023-01-23	TSL   Meas. Date	HBBL600-10000V6   2023-Jul-06

## Scans Setup

	Area Scan	Zoom Scan
Grid Extents [mm]	120.0 x 210.0	30.0 x 30.0 x 30.0
Grid Steps [mm]	15.0 x 15.0	6.0 x 6.0 x 1.5
Sensor Surface [mm]	3.0	1.4
Graded Grid	n/a	Yes
M2/M1 [%]		81.6
Dist 3dB Peak [mm]		15.6

## Measurement Results

	Area Scan	Zoom Scan
psSAR1g [W/Kg]	0.145	<b>0.147</b>
psSAR10g [W/Kg]	0.096	<b>0.088</b>
Power Drift [dB]	n/a	-0.02



# Measurement Report for Band 12, CHEEK, Normal, CELL Main1

## Exposure Conditions

Band	Band 12	TSL Permittivity	41.7
Frequency [MHz]   Channel Number	707.5   23095	TSL Conductivity [S/m]	0.896
Group   UID	LTE-FDD   10175-CAH	Phantom Section   TSL	LeftHead   HSL
Conversion Factor	10.65	Test Distance [mm]	0.00
Communication Configuration	LTE-FDD (SC-FDMA, 1 RB, 10 MHz, QPSK) RBPosition:Mid AntennaCfg:SISO		

## Hardware Setup

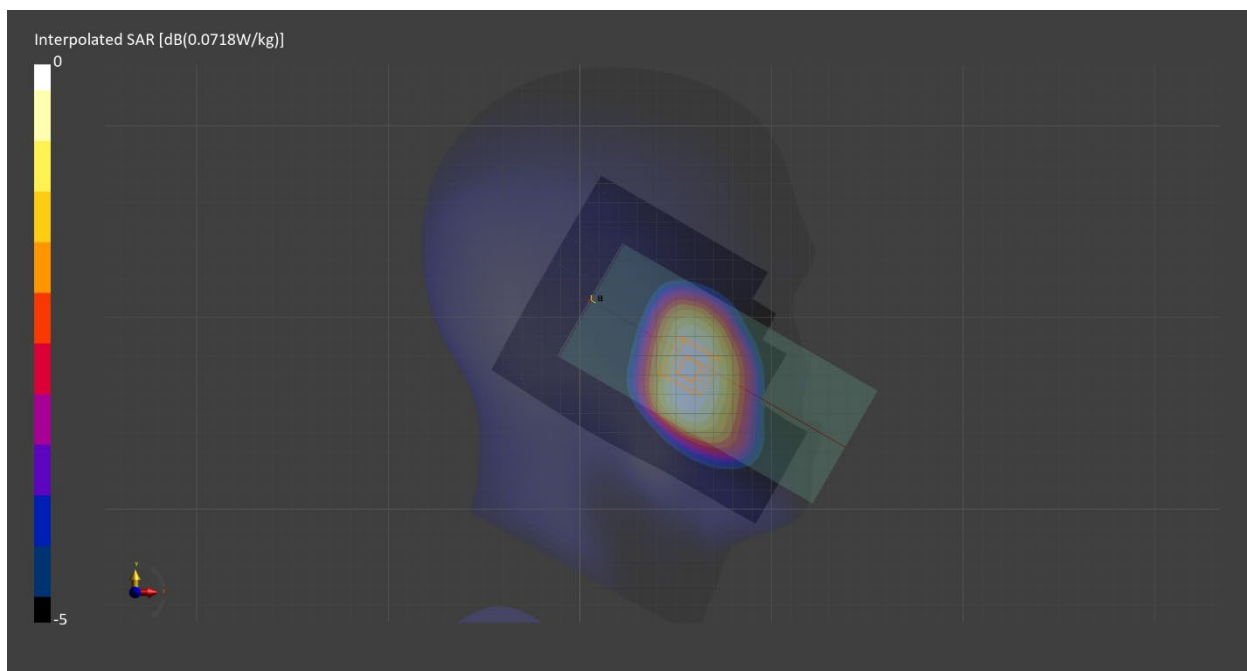
Probe   Calibration Date	EX3DV4 - SN7710   2023-02-03	Phantom	Twin-SAM V8.0 (30deg probe tilt) - SN2084
DAE   Calibration Date	DAE4 Sn1715   2023-01-23	TSL   Meas. Date	HBBL600-10000V6   2023-Jul-06

## Scans Setup

	Area Scan	Zoom Scan
Grid Extents [mm]	120.0 x 210.0	30.0 x 30.0 x 30.0
Grid Steps [mm]	15.0 x 15.0	6.0 x 6.0 x 1.5
Sensor Surface [mm]	3.0	1.4
Graded Grid	n/a	Yes
M2/M1 [%]		93.2
Dist 3dB Peak [mm]		26.4

## Measurement Results

	Area Scan	Zoom Scan
psSAR1g [W/Kg]	0.052	<b>0.056</b>
psSAR10g [W/Kg]	0.037	<b>0.043</b>
Power Drift [dB]	n/a	0.00



# Measurement Report for Band 12, BACK, Normal, CELL Main1

## Exposure Conditions

Band	Band 12	TSL Permittivity	41.7
Frequency [MHz]   Channel Number	707.5   23095	TSL Conductivity [S/m]	0.896
Group   UID	LTE-FDD   10175-CAH	Phantom Section   TSL	Flat   HSL
Conversion Factor	10.65	Test Distance [mm]	10.00
Communication Configuration	LTE-FDD (SC-FDMA, 1 RB, 10 MHz, QPSK) RBPosition:Mid AntennaCfg:SISO		

## Hardware Setup

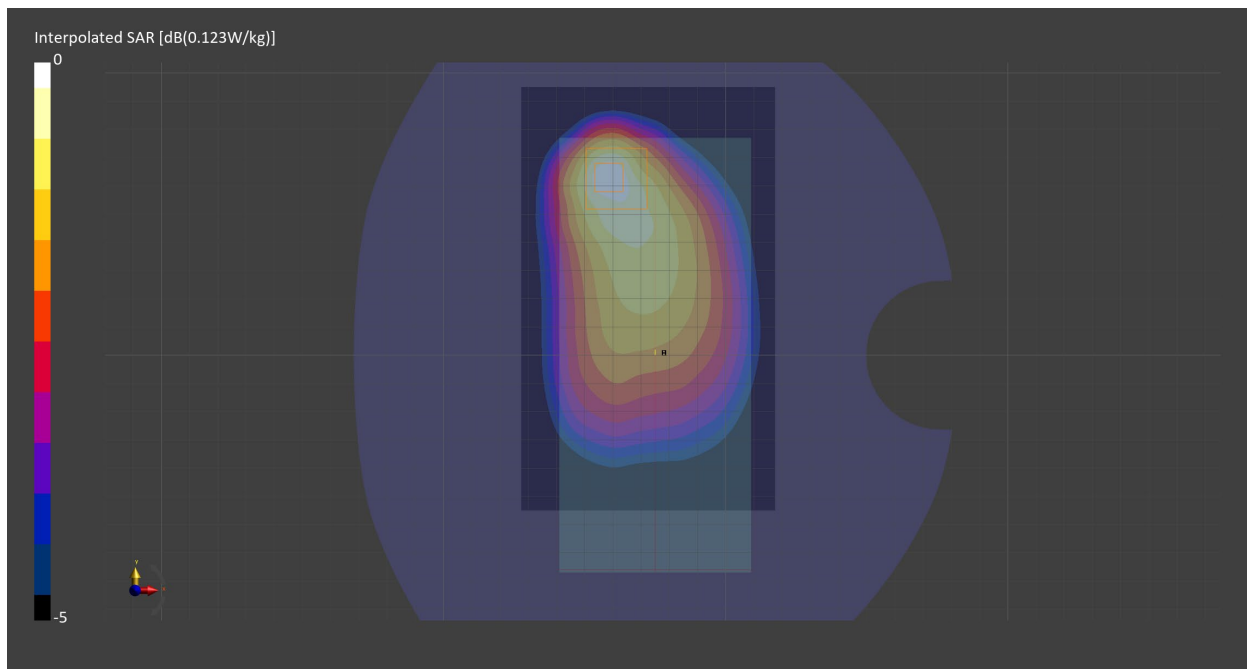
Probe   Calibration Date	EX3DV4 - SN7710   2023-02-03	Phantom	Twin-SAM V8.0 (30deg probe tilt) - SN2084
DAE   Calibration Date	DAE4 Sn1715   2023-01-23	TSL   Meas. Date	HBBL600-10000V6   2023-Jul-06

## Scans Setup

	Area Scan	Zoom Scan
Grid Extents [mm]	90.0 x 150.0	30.0 x 30.0 x 30.0
Grid Steps [mm]	15.0 x 15.0	6.0 x 6.0 x 1.5
Sensor Surface [mm]	3.0	1.4
Graded Grid	n/a	Yes
M2/M1 [%]		81.4
Dist 3dB Peak [mm]		16.7

## Measurement Results

	Area Scan	Zoom Scan
psSAR1g [W/Kg]	0.105	<b>0.102</b>
psSAR10g [W/Kg]	0.070	<b>0.063</b>
Power Drift [dB]	n/a	-0.00



# Measurement Report for Band 12, EDGE LEFT, Normal, CELL Main1

## Exposure Conditions

Band	Band 12	TSL Permittivity	41.7
Frequency [MHz]   Channel Number	707.5   23095	TSL Conductivity [S/m]	0.896
Group   UID	LTE-FDD   10175-CAH	Phantom Section   TSL	Flat   HSL
Conversion Factor	10.65	Test Distance [mm]	10.00
Communication Configuration	LTE-FDD (SC-FDMA, 1 RB, 10 MHz, QPSK) RBPosition:Mid AntennaCfg:SISO		

## Hardware Setup

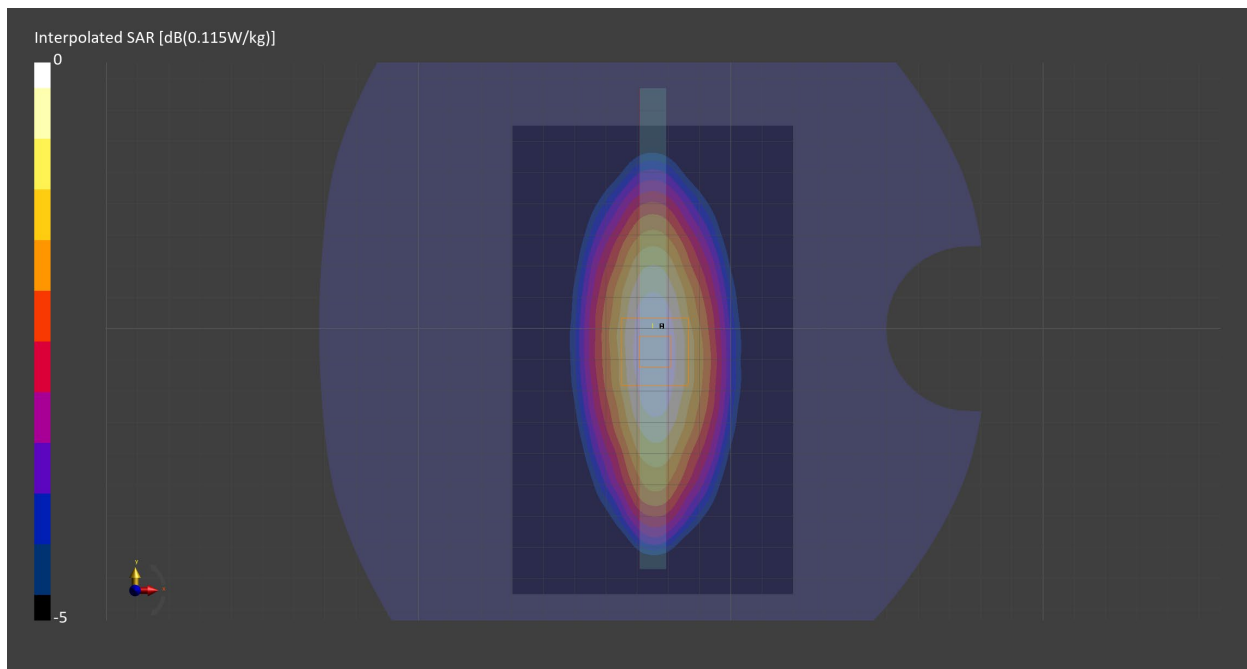
Probe   Calibration Date	EX3DV4 - SN7710   2023-02-03	Phantom	Twin-SAM V8.0 (30deg probe tilt) - SN2084
DAE   Calibration Date	DAE4 Sn1715   2023-01-23	TSL   Meas. Date	HBBL600-10000V6   2023-Jul-06

## Scans Setup

	Area Scan	Zoom Scan
Grid Extents [mm]	90.0 x 150.0	30.0 x 30.0 x 30.0
Grid Steps [mm]	15.0 x 15.0	6.0 x 6.0 x 1.5
Sensor Surface [mm]	3.0	1.4
Graded Grid	n/a	Yes
M2/M1 [%]		84.8
Dist 3dB Peak [mm]		> 15.0

## Measurement Results

	Area Scan	Zoom Scan
psSAR1g [W/Kg]	0.101	<b>0.104</b>
psSAR10g [W/Kg]	0.069	<b>0.070</b>
Power Drift [dB]	n/a	0.02



# Measurement Report for Band 13, CHEEK, Normal, CELL Main1

## Exposure Conditions

Band	Band 13	TSL Permittivity	42.9
Frequency [MHz]   Channel Number	782.0   23230	TSL Conductivity [S/m]	0.917
Group   UID	LTE-FDD   10154-CAH	Phantom Section   TSL	RightHead   HSL
Conversion Factor	10.65	Test Distance [mm]	0.00
Communication Configuration	LTE-FDD (SC-FDMA, 50% RB, 10 MHz, QPSK) RBPosition:Mid AntennaCfg:SISO		

## Hardware Setup

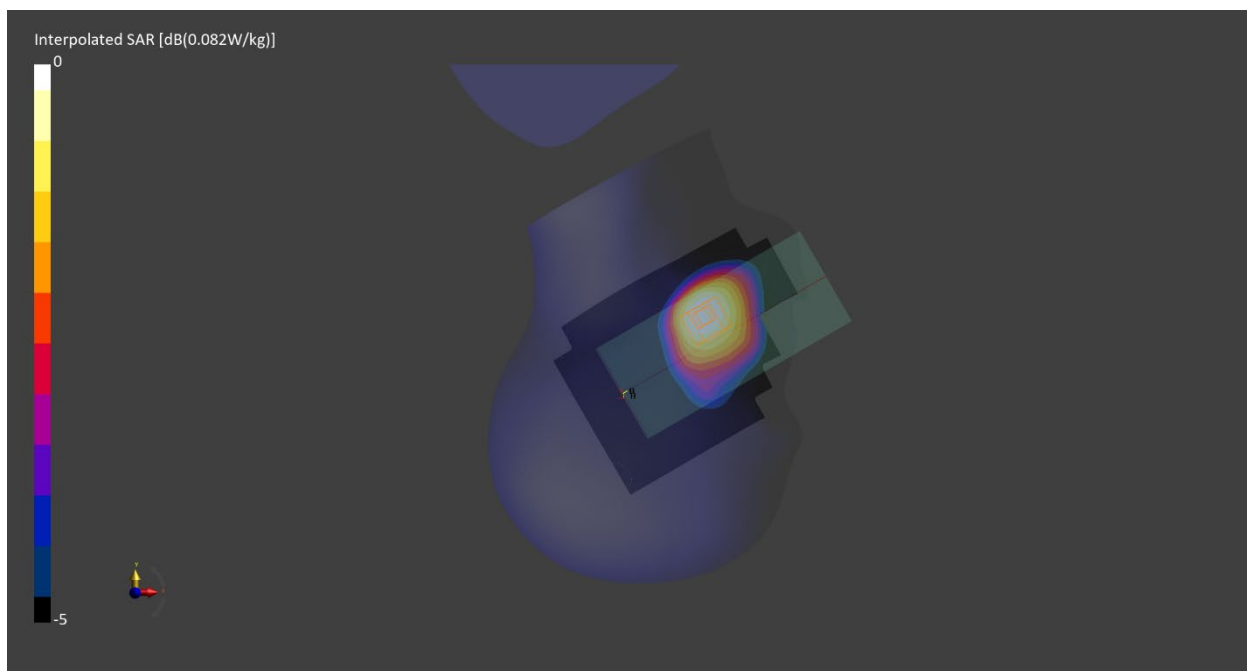
Probe   Calibration Date	EX3DV4 - SN7710   2023-02-03	Phantom	Twin-SAM V8.0 (30deg probe tilt) - SN2084
DAE   Calibration Date	DAE4 Sn1715   2023-01-23	TSL   Meas. Date	HBBL600-10000V6   2023-Jun-13

## Scans Setup

	Area Scan	Zoom Scan
Grid Extents [mm]	120.0 x 210.0	30.0 x 30.0 x 30.0
Grid Steps [mm]	15.0 x 15.0	6.0 x 6.0 x 1.5
Sensor Surface [mm]	3.0	1.4
Graded Grid	n/a	Yes
M2/M1 [%]		94.0
Dist 3dB Peak [mm]		19.5

## Measurement Results

	Area Scan	Zoom Scan
psSAR1g [W/Kg]	0.063	<b>0.066</b>
psSAR10g [W/Kg]	0.043	<b>0.051</b>
Power Drift [dB]	n/a	-0.31



# Measurement Report for Band 13, BACK, Normal, CELL Main1

## Exposure Conditions

Band	Band 13	TSL Permittivity	42.9
Frequency [MHz]   Channel Number	782.0   23230	TSL Conductivity [S/m]	0.917
Group   UID	LTE-FDD   10154-CAH	Phantom Section   TSL	Flat   HSL
Conversion Factor	10.65	Test Distance [mm]	10.00
Communication Configuration	LTE-FDD (SC-FDMA, 50% RB, 10 MHz, QPSK) RBPosition:Mid AntennaCfg:SISO		

## Hardware Setup

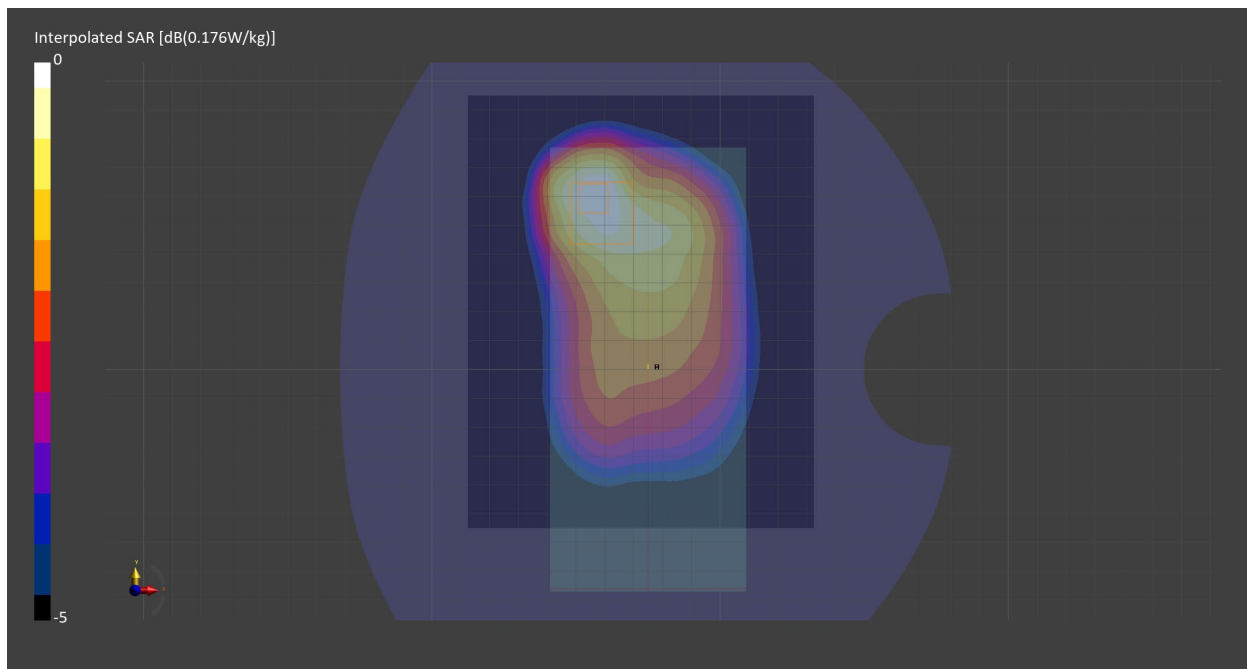
Probe   Calibration Date	EX3DV4 - SN7710   2023-02-03	Phantom	Twin-SAM V8.0 (30deg probe tilt) - SN2084
DAE   Calibration Date	DAE4 Sn1715   2023-01-23	TSL   Meas. Date	HBBL600-10000V6   2023-Jun-13

## Scans Setup

	Area Scan	Zoom Scan
Grid Extents [mm]	120.0 x 150.0	30.0 x 30.0 x 30.0
Grid Steps [mm]	15.0 x 15.0	6.0 x 6.0 x 1.5
Sensor Surface [mm]	3.0	1.4
Graded Grid	n/a	Yes
M2/M1 [%]		83.1
Dist 3dB Peak [mm]		20.4

## Measurement Results

	Area Scan	Zoom Scan
psSAR1g [W/Kg]	0.152	<b>0.153</b>
psSAR10g [W/Kg]	0.103	<b>0.098</b>
Power Drift [dB]	n/a	-0.00





# Measurement Report for Band 41, CHEEK, Normal, CELL Main2

## Exposure Conditions

Band	Band 41	TSL Permittivity	39.4
Frequency [MHz]   Channel Number	2506.0   39750	TSL Conductivity [S/m]	1.89
Group   UID	LTE-TDD   10172-CAH	Phantom Section   TSL	RightHead   HSL
Conversion Factor	7.67	Test Distance [mm]	0.00
Communication Configuration	LTE-TDD (SC-FDMA, 1 RB, 20 MHz, QPSK) RBPosition:Mid AntennaCfg:SISO		

## Hardware Setup

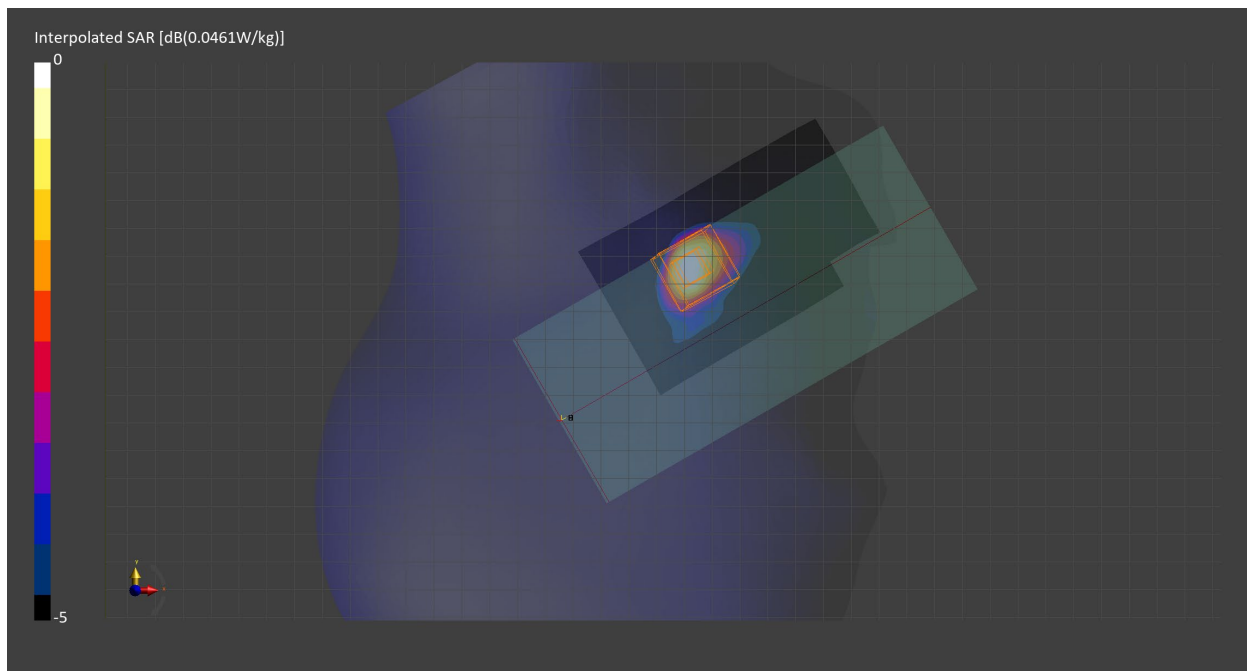
Probe   Calibration Date	EX3DV4 - SN7711   2023-03-29	Phantom	Twin-SAM V8.0 (30deg probe tilt) - SN2082
DAE   Calibration Date	DAE4 Sn1716   2023-03-16	TSL   Meas. Date	HBBL-600-10000   2023-Jul-03

## Scans Setup

	Area Scan	Zoom Scan
Grid Extents [mm]	60.0 x 100.0	30.0 x 30.0 x 30.0
Grid Steps [mm]	10.0 x 10.0	5.0 x 5.0 x 1.5
Sensor Surface [mm]	3.0	1.4
Graded Grid	n/a	Yes
M2/M1 [%]		88.9
Dist 3dB Peak [mm]		7.0

## Measurement Results

	Area Scan	Zoom Scan
psSAR1g [W/Kg]	0.024	<b>0.026</b>
psSAR10g [W/Kg]	0.011	<b>0.013</b>
Power Drift [dB]	n/a	-0.19



# Measurement Report for Band 41, BACK, Normal, CELL Main2

## Exposure Conditions

Band	Band 41	TSL Permittivity	39.4
Frequency [MHz]   Channel Number	2506.0   39750	TSL Conductivity [S/m]	1.89
Group   UID	LTE-TDD   10151-CAH	Phantom Section   TSL	Flat   HSL
Conversion Factor	7.67	Test Distance [mm]	10.00
Communication Configuration	LTE-TDD (SC-FDMA, 50% RB, 20 MHz, QPSK) RBPosition:Mid AntennaCfg:SISO		

## Hardware Setup

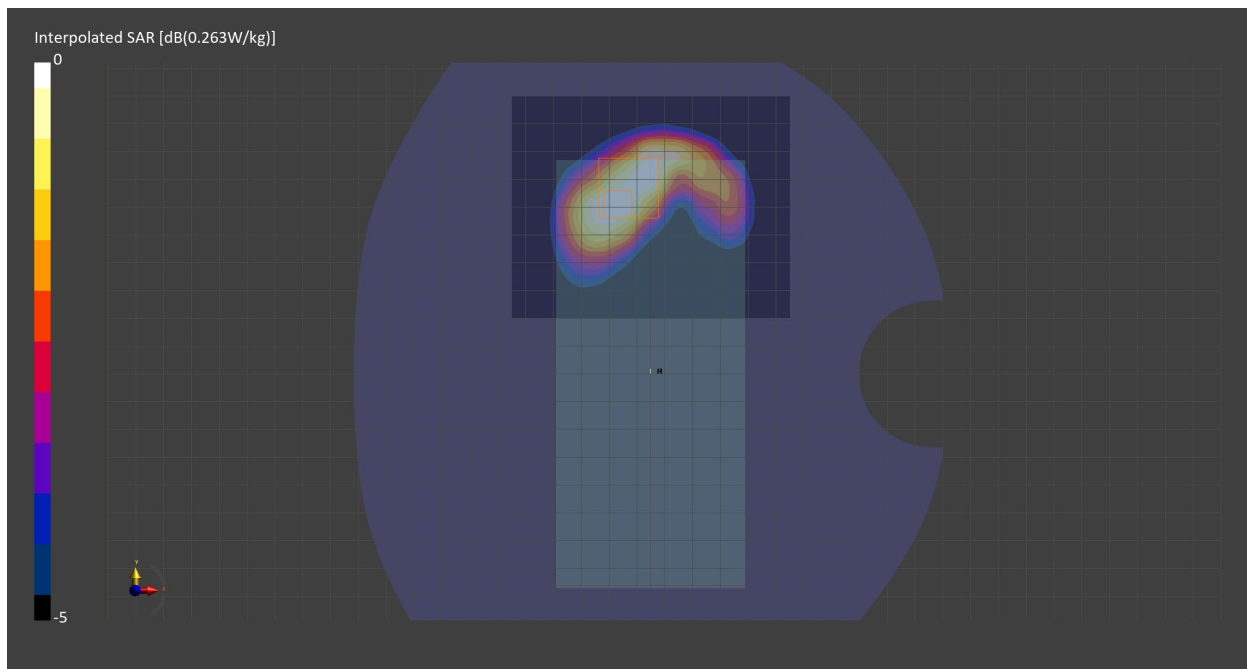
Probe   Calibration Date	EX3DV4 - SN7711   2023-03-29	Phantom	Twin-SAM V8.0 (30deg probe tilt) - SN2082
DAE   Calibration Date	DAE4 Sn1716   2023-03-16	TSL   Meas. Date	HBBL-600-10000   2023-Jul-03

## Scans Setup

	Area Scan	Zoom Scan
Grid Extents [mm]	100.0 x 80.0	30.0 x 30.0 x 30.0
Grid Steps [mm]	10.0 x 10.0	5.0 x 5.0 x 1.5
Sensor Surface [mm]	3.0	1.4
Graded Grid	n/a	Yes
M2/M1 [%]		80.1
Dist 3dB Peak [mm]		11.2

## Measurement Results

	Area Scan	Zoom Scan
psSAR1g [W/Kg]	0.136	<b>0.138</b>
psSAR10g [W/Kg]	0.074	<b>0.075</b>
Power Drift [dB]	n/a	-0.02



# Measurement Report for Band 41, EDGE BOTTOM, Normal, CELL Main2

## Exposure Conditions

Band	Band 41	TSL Permittivity	39.4
Frequency [MHz]   Channel Number	2506.0   39750	TSL Conductivity [S/m]	1.89
Group   UID	LTE-TDD   10151-CAH	Phantom Section   TSL	Flat   HSL
Conversion Factor	7.67	Test Distance [mm]	10.00
Communication Configuration	LTE-TDD (SC-FDMA, 50% RB, 20 MHz, QPSK) RBPosition:Mid AntennaCfg:SISO		

## Hardware Setup

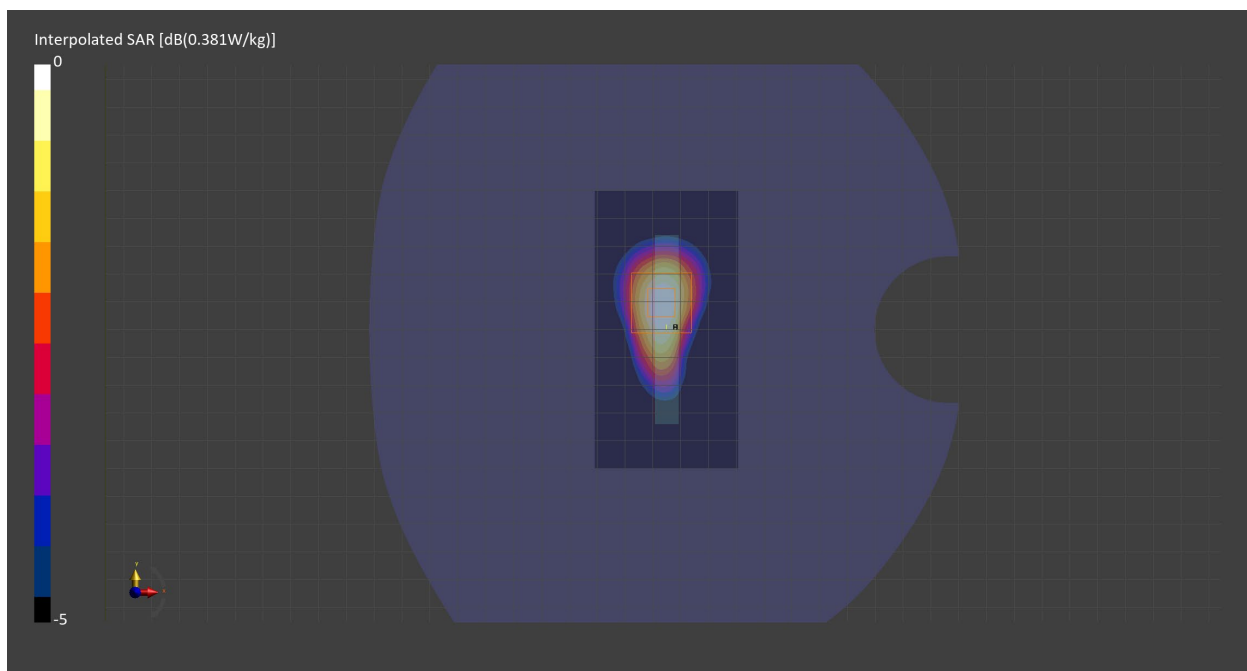
Probe   Calibration Date	EX3DV4 - SN7711   2023-03-29	Phantom	Twin-SAM V8.0 (30deg probe tilt) - SN2082
DAE   Calibration Date	DAE4 Sn1716   2023-03-16	TSL   Meas. Date	HBBL-600-10000   2023-Jul-03

## Scans Setup

	Area Scan	Zoom Scan
Grid Extents [mm]	51.6 x 100.0	30.0 x 30.0 x 30.0
Grid Steps [mm]	8.6 x 10.0	5.0 x 5.0 x 1.5
Sensor Surface [mm]	3.0	1.4
Graded Grid	n/a	Yes
M2/M1 [%]		80.8
Dist 3dB Peak [mm]		12.1

## Measurement Results

	Area Scan	Zoom Scan
psSAR1g [W/Kg]	0.197	<b>0.201</b>
psSAR10g [W/Kg]	0.102	<b>0.105</b>
Power Drift [dB]	n/a	0.02



# Measurement Report for Band 66, CHEEK, Normal, CELL Main1

## Exposure Conditions

Band	Band 66	TSL Permittivity	39.5
Frequency [MHz]   Channel Number	1745.0   132322	TSL Conductivity [S/m]	1.39
Group   UID	LTE-FDD   10169-CAF	Phantom Section   TSL	RightHead   HSL
Conversion Factor	9.11	Test Distance [mm]	0.00
Communication Configuration	LTE-FDD (SC-FDMA, 1 RB, 20 MHz, QPSK) RBPosition:High AntennaCfg:SISO		

## Hardware Setup

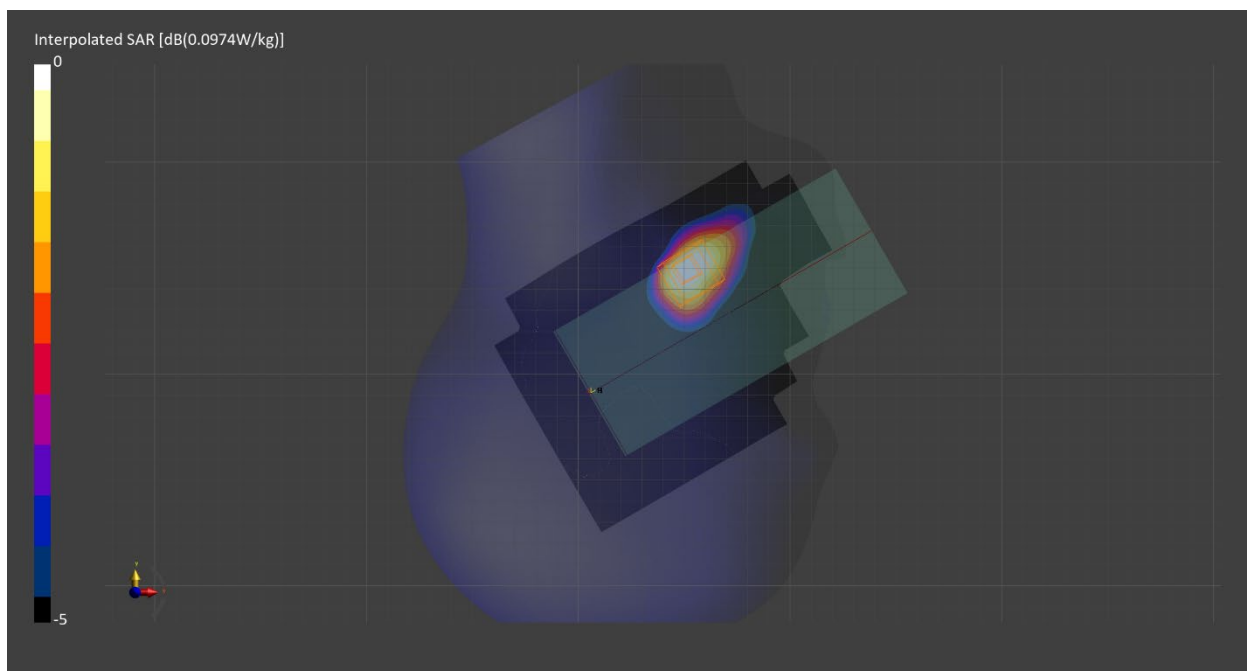
Probe   Calibration Date	EX3DV4 - SN7710   2023-02-03	Phantom	Twin-SAM V8.0 (30deg probe tilt) - SN2084
DAE   Calibration Date	DAE4 Sn1715   2023-01-23	TSL   Meas. Date	HBBL600-10000V6   2023-Jun-19

## Scans Setup

	Area Scan	Zoom Scan
Grid Extents [mm]	120.0 x 210.0	30.0 x 30.0 x 30.0
Grid Steps [mm]	15.0 x 15.0	6.0 x 6.0 x 1.5
Sensor Surface [mm]	3.0	1.4
Graded Grid	n/a	Yes
M2/M1 [%]		91.0
Dist 3dB Peak [mm]		12.4

## Measurement Results

	Area Scan	Zoom Scan
psSAR1g [W/Kg]	0.057	<b>0.061</b>
psSAR10g [W/Kg]	0.033	<b>0.038</b>
Power Drift [dB]	n/a	-0.05



# Measurement Report for Band 66, BACK, Normal, CELL Main1

## Exposure Conditions

Band	Band 66	TSL Permittivity	39.5
Frequency [MHz]   Channel Number	1745.0   132322	TSL Conductivity [S/m]	1.39
Group   UID	LTE-FDD   10297-AAE	Phantom Section   TSL	Flat   HSL
Conversion Factor	9.11	Test Distance [mm]	10.00
Communication Configuration	LTE-FDD (SC-FDMA, 50% RB, 20 MHz, QPSK) RBPosition:High AntennaCfg:SISO		

## Hardware Setup

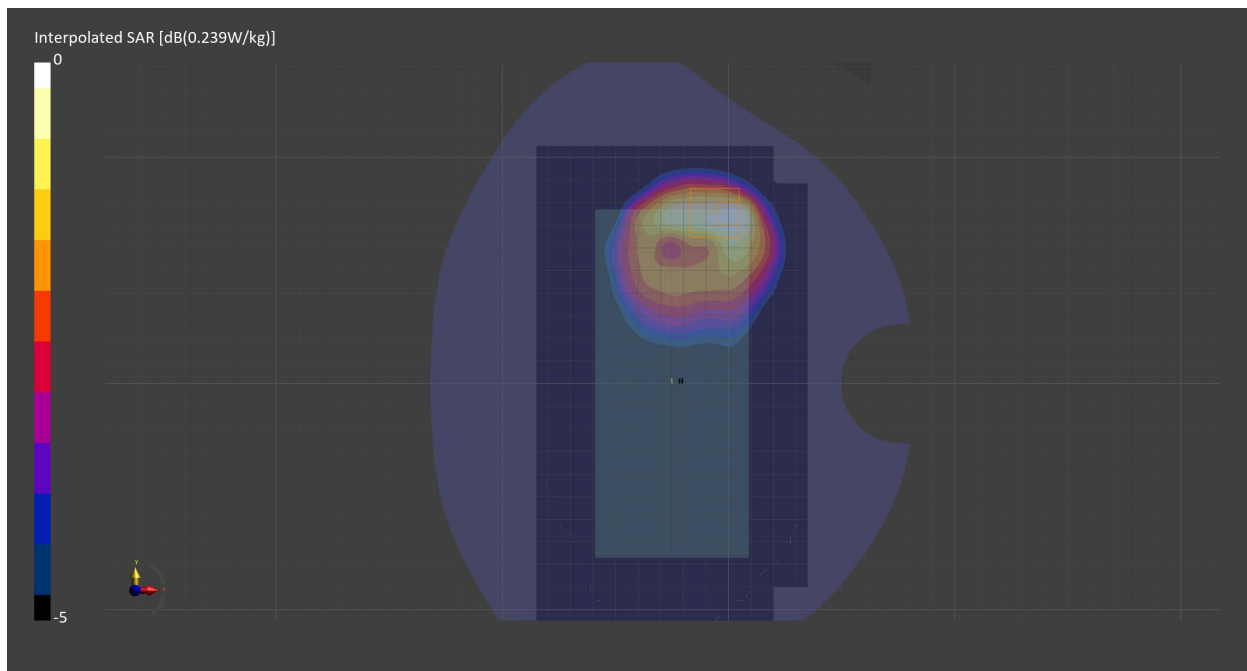
Probe   Calibration Date	EX3DV4 - SN7710   2023-02-03	Phantom	Twin-SAM V8.0 (30deg probe tilt) - SN2084
DAE   Calibration Date	DAE4 Sn1715   2023-01-23	TSL   Meas. Date	HBBL600-10000V6   2023-Jun-19

## Scans Setup

	Area Scan	Zoom Scan
Grid Extents [mm]	120.0 x 210.0	30.0 x 30.0 x 30.0
Grid Steps [mm]	15.0 x 15.0	6.0 x 6.0 x 1.5
Sensor Surface [mm]	3.0	1.4
Graded Grid	n/a	Yes
M2/M1 [%]		82.1
Dist 3dB Peak [mm]		11.9

## Measurement Results

	Area Scan	Zoom Scan
psSAR1g [W/Kg]	0.140	<b>0.138</b>
psSAR10g [W/Kg]	0.083	<b>0.082</b>
Power Drift [dB]	n/a	0.00



# Measurement Report for Band 66, EDGE BOTTOM, Normal, CELL Main1

## Exposure Conditions

Band	Band 66	TSL Permittivity	39.5
Frequency [MHz]   Channel Number	1745.0   132322	TSL Conductivity [S/m]	1.39
Group   UID	LTE-FDD   10297-AAE	Phantom Section   TSL	Flat   HSL
Conversion Factor	9.11	Test Distance [mm]	10.00
Communication Configuration	LTE-FDD (SC-FDMA, 50% RB, 20 MHz, QPSK) RBPosition:High AntennaCfg:SISO		

## Hardware Setup

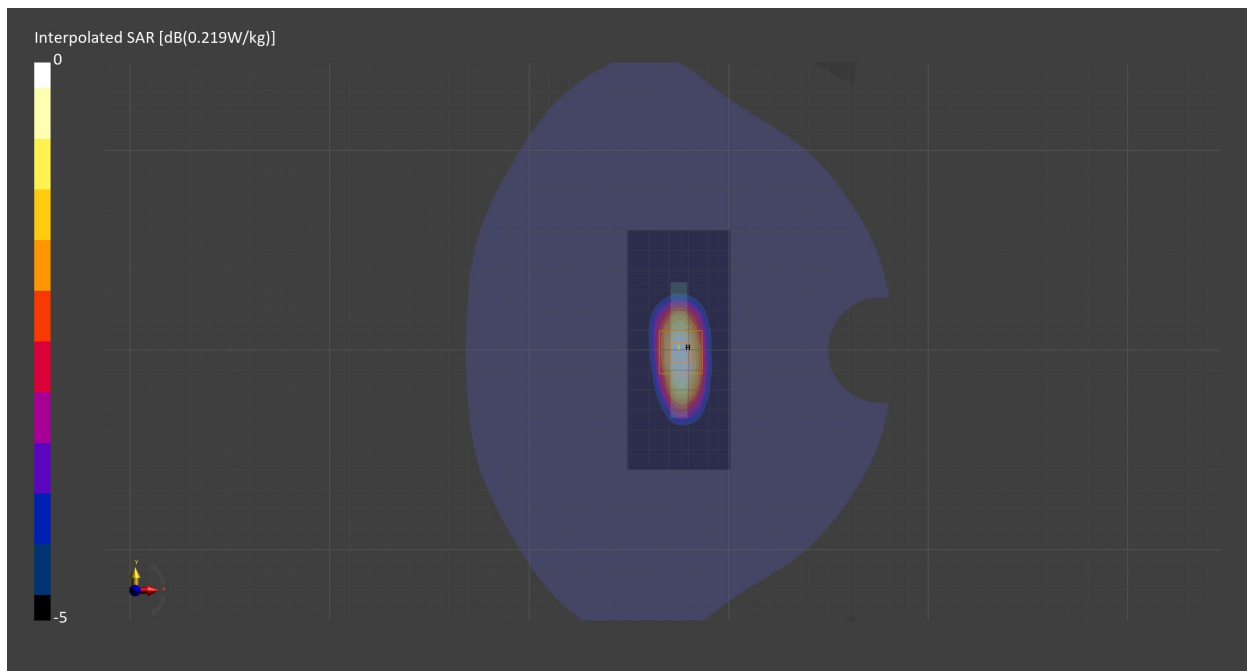
Probe   Calibration Date	EX3DV4 - SN7710   2023-02-03	Phantom	Twin-SAM V8.0 (30deg probe tilt) - SN2084
DAE   Calibration Date	DAE4 Sn1715   2023-01-23	TSL   Meas. Date	HBBL600-10000V6   2023-Jun-19

## Scans Setup

	Area Scan	Zoom Scan
Grid Extents [mm]	51.6 x 120.0	30.0 x 30.0 x 30.0
Grid Steps [mm]	8.6 x 15.0	6.0 x 6.0 x 1.5
Sensor Surface [mm]	3.0	1.4
Graded Grid	n/a	Yes
M2/M1 [%]		82.0
Dist 3dB Peak [mm]		12.0

## Measurement Results

	Area Scan	Zoom Scan
psSAR1g [W/Kg]	0.178	<b>0.183</b>
psSAR10g [W/Kg]	0.100	<b>0.104</b>
Power Drift [dB]	n/a	0.01



# Measurement Report for Band 66, TILT, Normal, CELL Sub

## Exposure Conditions

Band	Band 66	TSL Permittivity	38.7
Frequency [MHz]   Channel Number	1770.0   132572	TSL Conductivity [S/m]	1.34
Group   UID	LTE-FDD   10297-AAE	Phantom Section   TSL	LeftHead   HSL
Conversion Factor	8.64	Test Distance [mm]	0.00
Communication Configuration	LTE-FDD (SC-FDMA, 50% RB, 20 MHz, QPSK) RBPosition:Low AntennaCfg:SISO		

## Hardware Setup

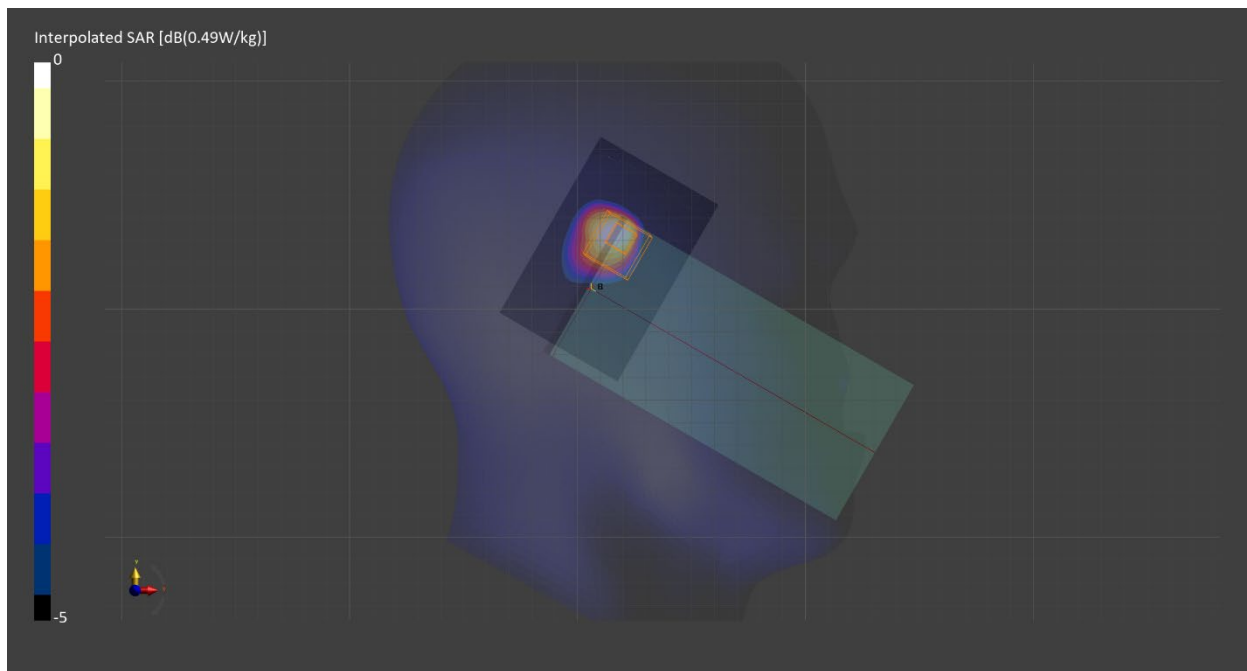
Probe   Calibration Date	EX3DV4 - SN7711   2023-03-29	Phantom	Twin-SAM V8.0 (30deg probe tilt) - SN2082
DAE   Calibration Date	DAE4 Sn1716   2023-03-16	TSL   Meas. Date	HBBL-600-10000   2023-Jun-27

## Scans Setup

	Area Scan	Zoom Scan
Grid Extents [mm]	90.0 x 60.0	30.0 x 30.0 x 30.0
Grid Steps [mm]	15.0 x 15.0	5.6 x 5.6 x 1.5
Sensor Surface [mm]	3.0	1.4
Graded Grid	n/a	Yes
M2/M1 [%]		80.0
Dist 3dB Peak [mm]		7.3

## Measurement Results

	Area Scan	Zoom Scan
psSAR1g [W/Kg]	0.385	<b>0.371</b>
psSAR10g [W/Kg]	0.207	<b>0.171</b>
Power Drift [dB]	n/a	-0.12



# Measurement Report for Band 66, BACK, Normal, CELL Sub

## Exposure Conditions

Band	Band 66	TSL Permittivity	38.1
Frequency [MHz]   Channel Number	1770.0   132572	TSL Conductivity [S/m]	1.35
Group   UID	LTE-FDD   10297-AAE	Phantom Section   TSL	Flat   HSL
Conversion Factor	8.64	Test Distance [mm]	10.00
Communication Configuration	LTE-FDD (SC-FDMA, 50% RB, 20 MHz, QPSK) RBPosition:Low AntennaCfg:SISO		

## Hardware Setup

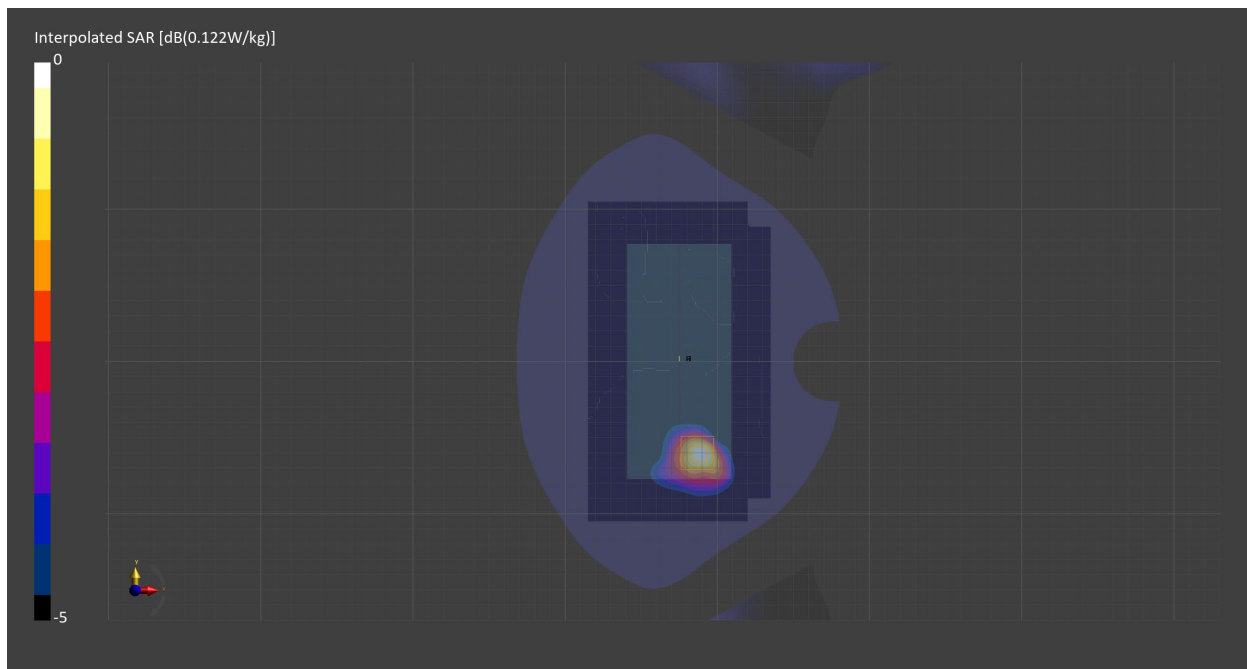
Probe   Calibration Date	EX3DV4 - SN7711   2023-03-29	Phantom	Twin-SAM V8.0 (30deg probe tilt) - SN2082
DAE   Calibration Date	DAE4 Sn1716   2023-03-16	TSL   Meas. Date	HBBL-600-10000   2023-Jun-23

## Scans Setup

	Area Scan	Zoom Scan
Grid Extents [mm]	120.0 x 210.0	30.0 x 30.0 x 30.0
Grid Steps [mm]	15.0 x 15.0	6.0 x 6.0 x 1.5
Sensor Surface [mm]	3.0	1.4
Graded Grid	n/a	Yes
M2/M1 [%]		88.7
Dist 3dB Peak [mm]		13.6

## Measurement Results

	Area Scan	Zoom Scan
psSAR1g [W/Kg]	0.074	<b>0.076</b>
psSAR10g [W/Kg]	0.040	<b>0.042</b>
Power Drift [dB]	n/a	-0.07





# Measurement Report for Band n5, CHEEK, Normal, CELL Main1

## Exposure Conditions

<b>Band</b>	Band n5	<b>TSL Permittivity</b>	39.9
<b>Frequency [MHz]   Channel Number</b>	836.5   167300	<b>TSL Conductivity [S/m]</b>	0.924
<b>Group   UID</b>	5G NR FR1 FDD   10939-AAC	<b>Phantom Section   TSL</b>	RightHead   HSL
<b>Conversion Factor</b>	9.5	<b>Test Distance [mm]</b>	0.00
<b>Communication Configuration</b> 5G NR (DFT-s-OFDM, 50% RB, 20 MHz, QPSK, 15 kHz) RBPosition:Mid AntennaCfg:SISO			

## Hardware Setup

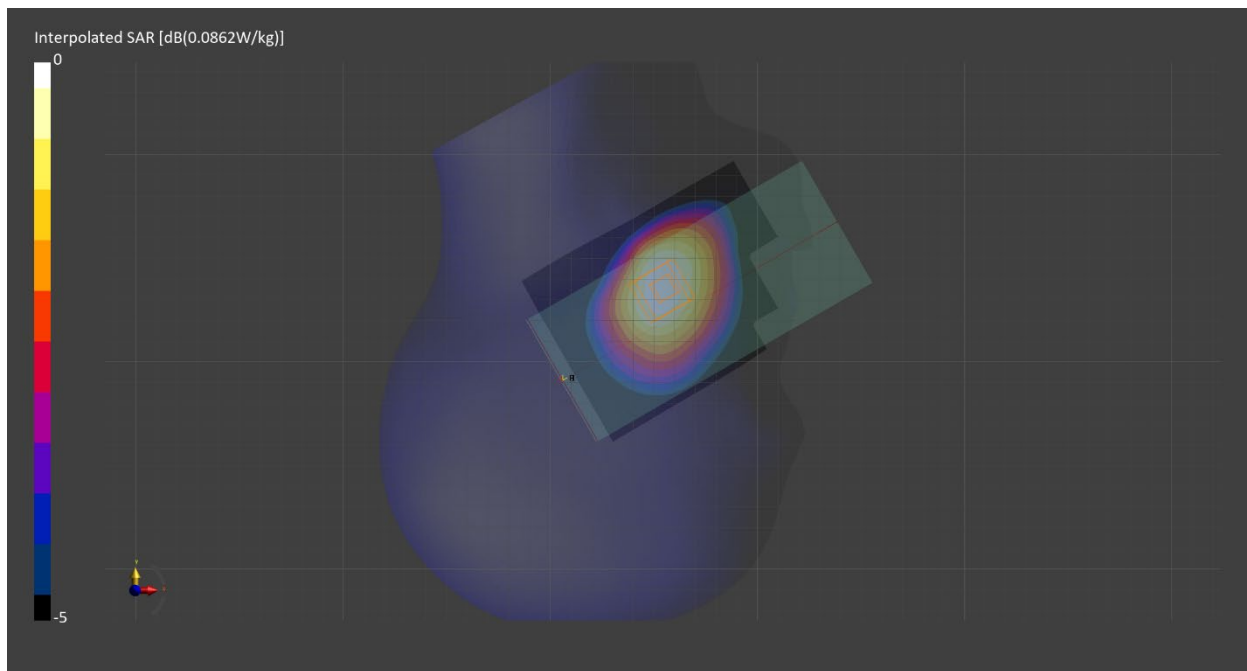
<b>Probe   Calibration Date</b>	EX3DV4 - SN7711   2023-03-29	<b>Phantom</b>	Twin-SAM V8.0 (30deg probe tilt) - SN2082
<b>DAE   Calibration Date</b>	DAE4 Sn1716   2023-03-16	<b>TSL   Meas. Date</b>	HBBL-600-10000   2023-Jun-23

## Scans Setup

	<b>Area Scan</b>	<b>Zoom Scan</b>
<b>Grid Extents [mm]</b>	90.0 x 120.0	30.0 x 30.0 x 30.0
<b>Grid Steps [mm]</b>	15.0 x 15.0	6.0 x 6.0 x 1.5
<b>Sensor Surface [mm]</b>	3.0	1.4
<b>Graded Grid</b>	n/a	Yes
<b>M2/M1 [%]</b>		97.1
<b>Dist 3dB Peak [mm]</b>		25.3

## Measurement Results

	<b>Area Scan</b>	<b>Zoom Scan</b>
<b>psSAR1g [W/Kg]</b>	0.075	<b>0.078</b>
<b>psSAR10g [W/Kg]</b>	0.052	<b>0.061</b>
<b>Power Drift [dB]</b>	n/a	0.00



# Measurement Report for Band n5, BACK, Normal, CELL Main1

## Exposure Conditions

<b>Band</b>	Band n5	<b>TSL Permittivity</b>	41.3
<b>Frequency [MHz]   Channel Number</b>	836.5   167300	<b>TSL Conductivity [S/m]</b>	0.945
<b>Group   UID</b>	5G NR FR1 FDD   10939-AAC	<b>Phantom Section   TSL</b>	Flat   HSL
<b>Conversion Factor</b>	10.14	<b>Test Distance [mm]</b>	10.00
<b>Communication Configuration</b> 5G NR (DFT-s-OFDM, 50% RB, 20 MHz, QPSK, 15 kHz) RBPosition:Mid AntennaCfg:SISO			

## Hardware Setup

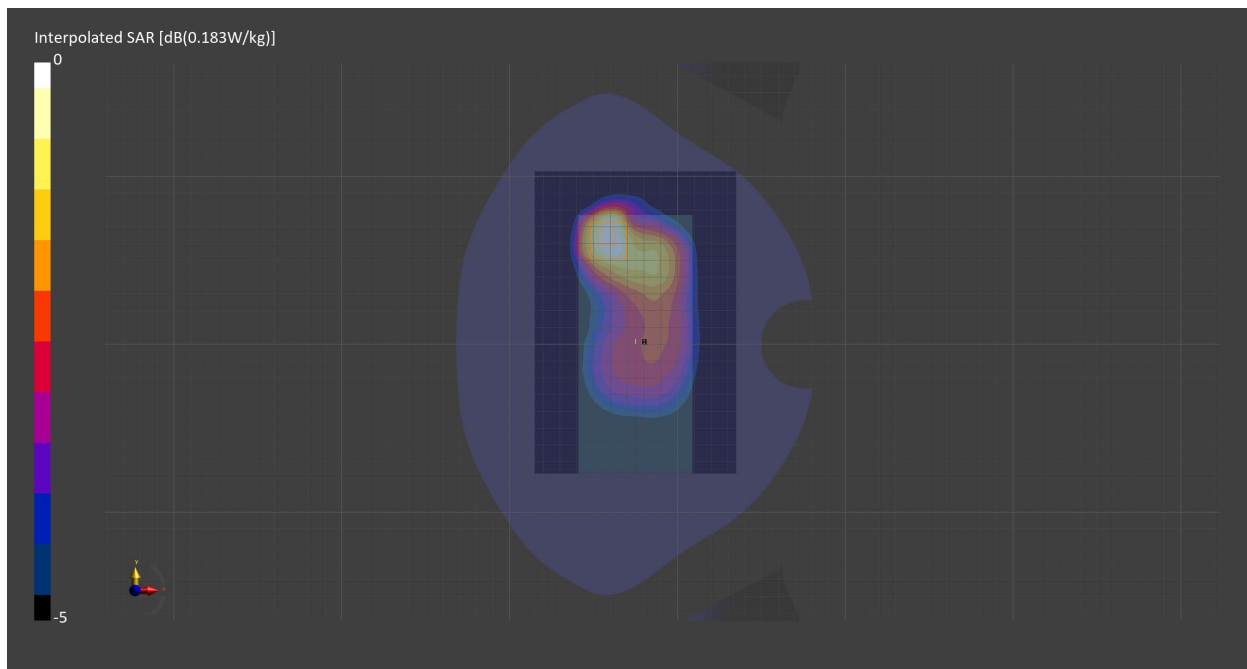
<b>Probe   Calibration Date</b>	EX3DV4 - SN7710   2023-02-03	<b>Phantom</b>	Twin-SAM V8.0 (30deg probe tilt) - SN2084
<b>DAE   Calibration Date</b>	DAE4 Sn1715   2023-01-23	<b>TSL   Meas. Date</b>	HBBL600-10000V6   2023-Jun-19

## Scans Setup

	<b>Area Scan</b>	<b>Zoom Scan</b>
<b>Grid Extents [mm]</b>	120.0 x 180.0	30.0 x 30.0 x 30.0
<b>Grid Steps [mm]</b>	15.0 x 15.0	6.0 x 6.0 x 1.5
<b>Sensor Surface [mm]</b>	3.0	1.4
<b>Graded Grid</b>	n/a	Yes
<b>M2/M1 [%]</b>		80.2
<b>Dist 3dB Peak [mm]</b>		16.1

## Measurement Results

	<b>Area Scan</b>	<b>Zoom Scan</b>
<b>psSAR1g [W/Kg]</b>	0.161	<b>0.162</b>
<b>psSAR10g [W/Kg]</b>	0.105	<b>0.096</b>
<b>Power Drift [dB]</b>	n/a	-0.00



# Measurement Report for Band n41, CHEEK, Normal, CELL Main2

## Exposure Conditions

<b>Band</b>	Band n41	<b>TSL Permittivity</b>	39.4
<b>Frequency [MHz]   Channel Number</b>	2546.0   509196	<b>TSL Conductivity [S/m]</b>	1.92
<b>Group   UID</b>	5G NR FR1 TDD   10917-AAB	<b>Phantom Section   TSL</b>	RightHead   HSL
<b>Conversion Factor</b>	7.67	<b>Test Distance [mm]</b>	0.00
<b>Communication Configuration</b>	5G NR (DFT-s-OFDM, 50% RB, 100 MHz, QPSK, 30 kHz) RBPosition:Mid AntennaCfg:SISO		

## Hardware Setup

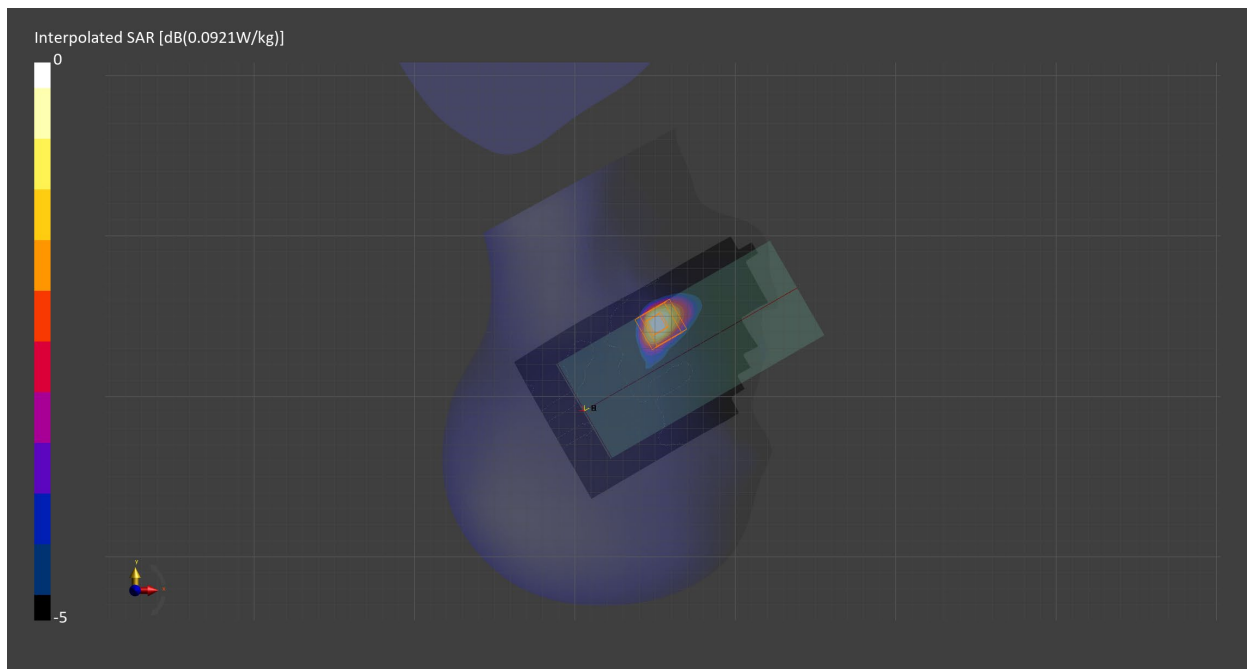
<b>Probe   Calibration Date</b>	EX3DV4 - SN7711   2023-03-29	<b>Phantom</b>	Twin-SAM V8.0 (30deg probe tilt) - SN2082
<b>DAE   Calibration Date</b>	DAE4 Sn1716   2023-03-16	<b>TSL   Meas. Date</b>	HBBL-600-10000   2023-Jul-03

## Scans Setup

	Area Scan	Zoom Scan
<b>Grid Extents [mm]</b>	100.0 x 200.0	30.0 x 30.0 x 30.0
<b>Grid Steps [mm]</b>	10.0 x 10.0	5.0 x 5.0 x 1.5
<b>Sensor Surface [mm]</b>	3.0	1.4
<b>Graded Grid</b>	n/a	Yes
<b>M2/M1 [%]</b>		92.5
<b>Dist 3dB Peak [mm]</b>		10.8

## Measurement Results

	Area Scan	Zoom Scan
<b>psSAR1g [W/Kg]</b>	0.054	<b>0.054</b>
<b>psSAR10g [W/Kg]</b>	0.026	<b>0.027</b>
<b>Power Drift [dB]</b>	n/a	-0.01



# Measurement Report for Band n41, BACK, Normal, CELL Main2

## Exposure Conditions

Band	Band n41	TSL Permittivity	39.4
Frequency [MHz]   Channel Number	2546.0   509196	TSL Conductivity [S/m]	1.92
Group   UID	5G NR FR1 TDD   10917-AAB	Phantom Section   TSL	Flat   HSL
Conversion Factor	7.67	Test Distance [mm]	10.00
Communication Configuration	5G NR (DFT-s-OFDM, 50% RB, 100 MHz, QPSK, 30 kHz) RBPosition:Mid AntennaCfg:SISO		

## Hardware Setup

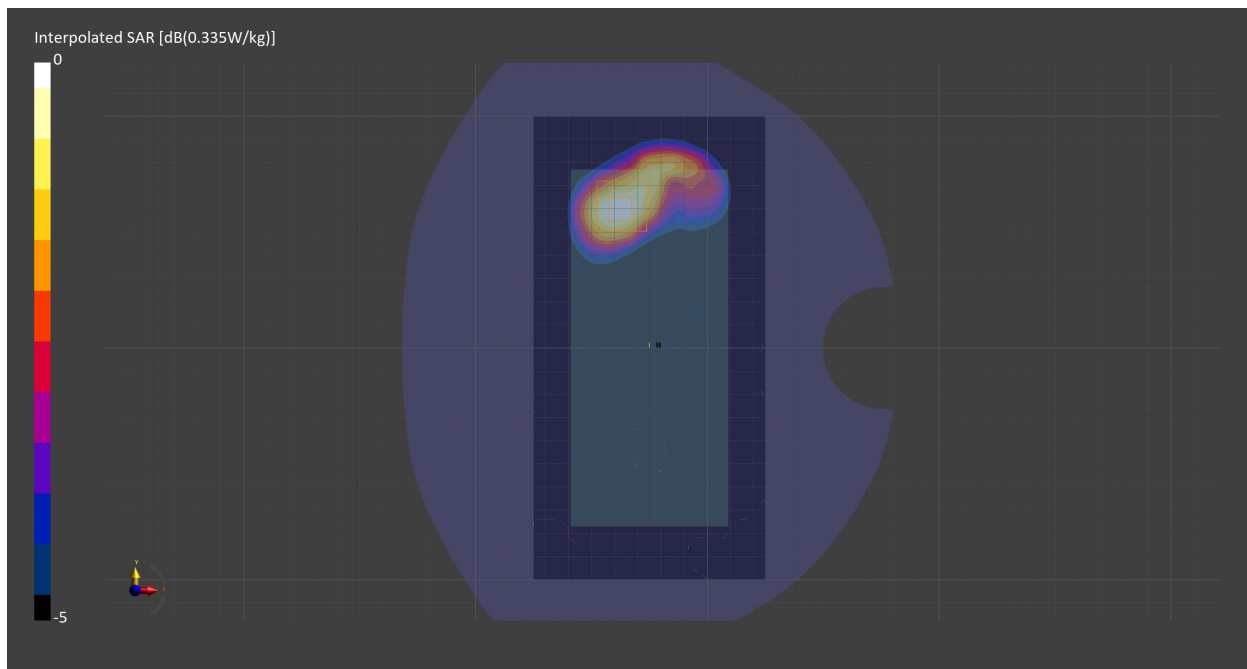
Probe   Calibration Date	EX3DV4 - SN7711   2023-03-29	Phantom	Twin-SAM V8.0 (30deg probe tilt) - SN2082
DAE   Calibration Date	DAE4 Sn1716   2023-03-16	TSL   Meas. Date	HBBL-600-10000   2023-Jul-03

## Scans Setup

	Area Scan	Zoom Scan
Grid Extents [mm]	100.0 x 200.0	30.0 x 30.0 x 30.0
Grid Steps [mm]	10.0 x 10.0	5.0 x 5.0 x 1.5
Sensor Surface [mm]	3.0	1.4
Graded Grid	n/a	Yes
M2/M1 [%]		80.4
Dist 3dB Peak [mm]		13.5

## Measurement Results

	Area Scan	Zoom Scan
psSAR1g [W/Kg]	0.266	<b>0.268</b>
psSAR10g [W/Kg]	0.140	<b>0.144</b>
Power Drift [dB]	n/a	-0.11



# Measurement Report for Band n41, EDGE BOTTOM, Normal, CELL Main2

## Exposure Conditions

Band	Band n41	TSL Permittivity	39.4
Frequency [MHz]   Channel Number	2546.0   509196	TSL Conductivity [S/m]	1.92
Group   UID	5G NR FR1 TDD   10866-AAD	Phantom Section   TSL	Flat   HSL
Conversion Factor	7.67	Test Distance [mm]	10.00
Communication Configuration	5G NR (DFT-s-OFDM, 1 RB, 100 MHz, QPSK, 30 kHz) RBPosition:Mid AntennaCfg:SISO		

## Hardware Setup

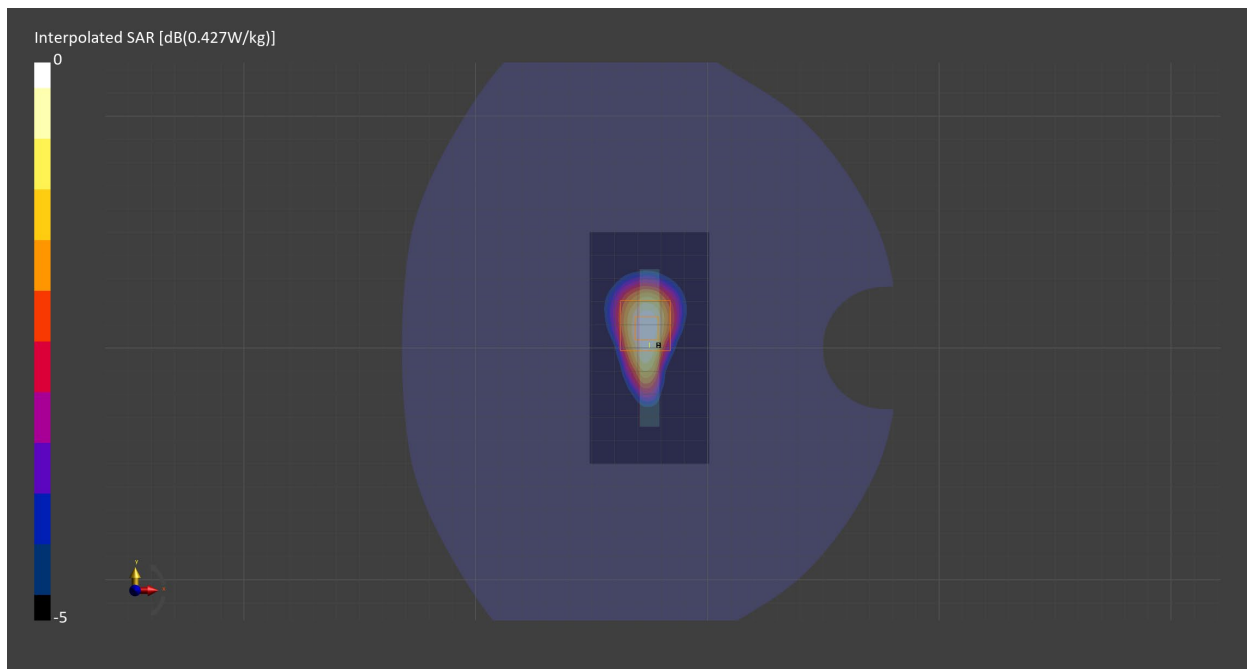
Probe   Calibration Date	EX3DV4 - SN7711   2023-03-29	Phantom	Twin-SAM V8.0 (30deg probe tilt) - SN2082
DAE   Calibration Date	DAE4 Sn1716   2023-03-16	TSL   Meas. Date	HBBL-600-10000   2023-Jul-03

## Scans Setup

	Area Scan	Zoom Scan
Grid Extents [mm]	51.6 x 100.0	30.0 x 30.0 x 30.0
Grid Steps [mm]	8.6 x 10.0	5.0 x 5.0 x 1.5
Sensor Surface [mm]	3.0	1.4
Graded Grid	n/a	Yes
M2/M1 [%]		81.2
Dist 3dB Peak [mm]		12.1

## Measurement Results

	Area Scan	Zoom Scan
psSAR1g [W/Kg]	0.335	<b>0.333</b>
psSAR10g [W/Kg]	0.172	<b>0.175</b>
Power Drift [dB]	n/a	-0.06



# Measurement Report for Band n66, CHEEK, Normal, CELL Main2

## Exposure Conditions

Band	Band n66	TSL Permittivity	38.2
Frequency [MHz]   Channel Number	1720.0   344000	TSL Conductivity [S/m]	1.32
Group   UID	5G NR FR1 FDD   10931-AAC	Phantom Section   TSL	LeftHead   HSL
Conversion Factor	8.64	Test Distance [mm]	0.00
Communication Configuration	5G NR (DFT-s-OFDM, 1 RB, 20 MHz, QPSK, 15 kHz) RBPosition:Low AntennaCfg:SISO		

## Hardware Setup

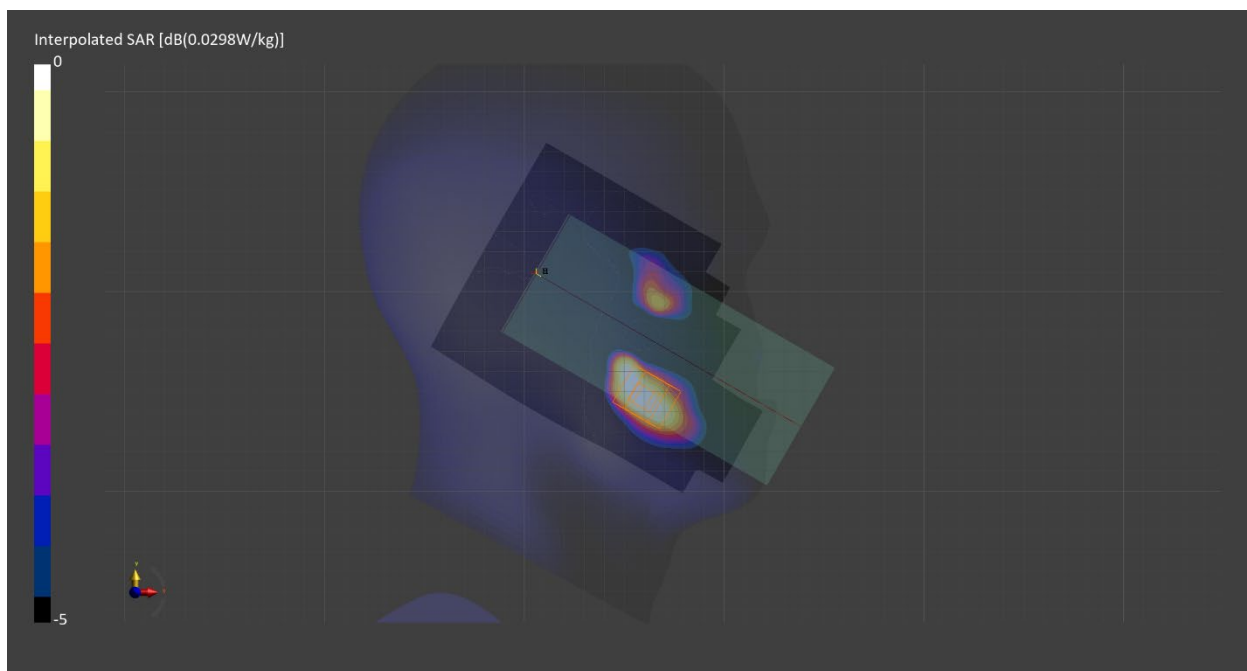
Probe   Calibration Date	EX3DV4 - SN7711   2023-03-29	Phantom	Twin-SAM V8.0 (30deg probe tilt) - SN2082
DAE   Calibration Date	DAE4 Sn1716   2023-03-16	TSL   Meas. Date	HBBL-600-10000   2023-Jun-23

## Scans Setup

	Area Scan	Zoom Scan
Grid Extents [mm]	120.0 x 210.0	30.0 x 30.0 x 30.0
Grid Steps [mm]	15.0 x 15.0	6.0 x 6.0 x 1.5
Sensor Surface [mm]	3.0	1.4
Graded Grid	n/a	Yes
M2/M1 [%]		91.9
Dist 3dB Peak [mm]		8.5

## Measurement Results

	Area Scan	Zoom Scan
psSAR1g [W/Kg]	0.096	<b>0.019</b>
psSAR10g [W/Kg]	0.017	<b>0.012</b>
Power Drift [dB]	n/a	-0.09



# Measurement Report for Band n66, BACK, Normal, CELL Main2

## Exposure Conditions

Band	Band n66	TSL Permittivity	38.2
Frequency [MHz]   Channel Number	1720.0   344000	TSL Conductivity [S/m]	1.32
Group   UID	5G NR FR1 FDD   10931-AAC	Phantom Section   TSL	Flat   HSL
Conversion Factor	8.64	Test Distance [mm]	10.00
Communication Configuration	5G NR (DFT-s-OFDM, 1 RB, 20 MHz, QPSK, 15 kHz) RBPosition:Low AntennaCfg:SISO		

## Hardware Setup

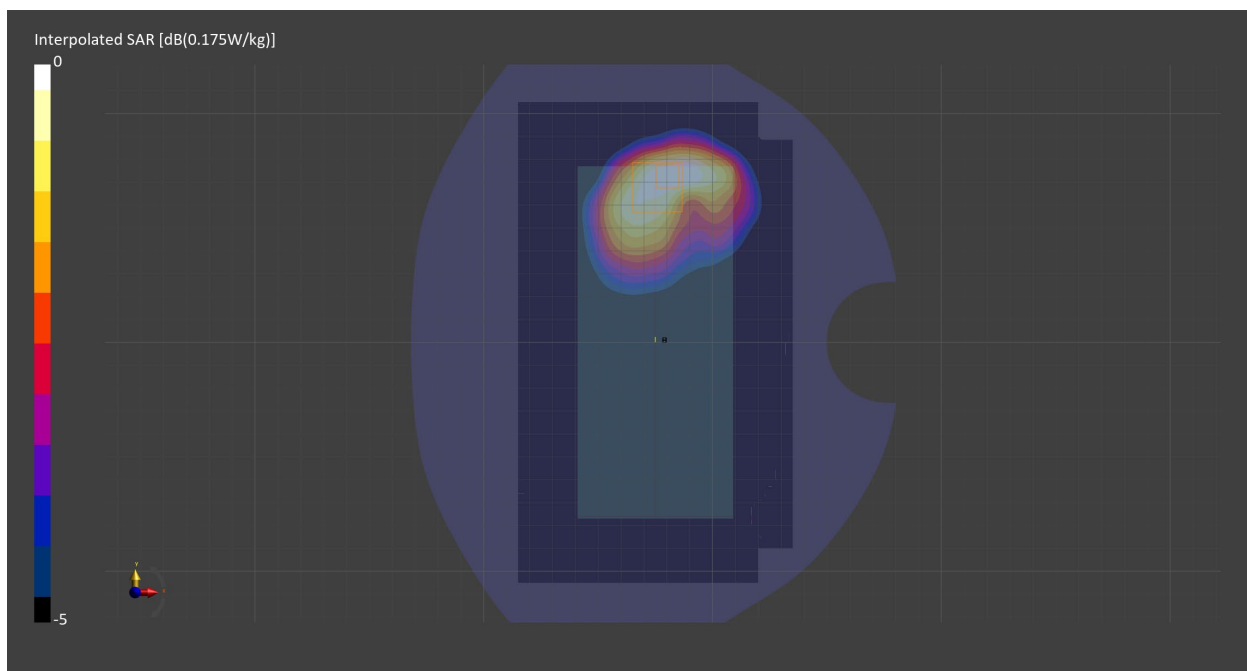
Probe   Calibration Date	EX3DV4 - SN7711   2023-03-29	Phantom	Twin-SAM V8.0 (30deg probe tilt) - SN2082
DAE   Calibration Date	DAE4 Sn1716   2023-03-16	TSL   Meas. Date	HBBL-600-10000   2023-Jun-23

## Scans Setup

	Area Scan	Zoom Scan
Grid Extents [mm]	120.0 x 210.0	30.0 x 30.0 x 30.0
Grid Steps [mm]	15.0 x 15.0	6.0 x 6.0 x 1.5
Sensor Surface [mm]	3.0	1.4
Graded Grid	n/a	Yes
M2/M1 [%]		86.5
Dist 3dB Peak [mm]		13.0

## Measurement Results

	Area Scan	Zoom Scan
psSAR1g [W/Kg]	0.104	<b>0.111</b>
psSAR10g [W/Kg]	0.064	<b>0.070</b>
Power Drift [dB]	n/a	-0.01



# Measurement Report for Band n66, EDGE BOTTOM, Normal, CELL Main2

## Exposure Conditions

Band	Band n66	TSL Permittivity	38.2
Frequency [MHz]   Channel Number	1720.0   344000	TSL Conductivity [S/m]	1.32
Group   UID	5G NR FR1 FDD   10931-AAC	Phantom Section   TSL	Flat   HSL
Conversion Factor	8.64	Test Distance [mm]	10.00
Communication Configuration	5G NR (DFT-s-OFDM, 1 RB, 20 MHz, QPSK, 15 kHz) RBPosition:Low AntennaCfg:SISO		

## Hardware Setup

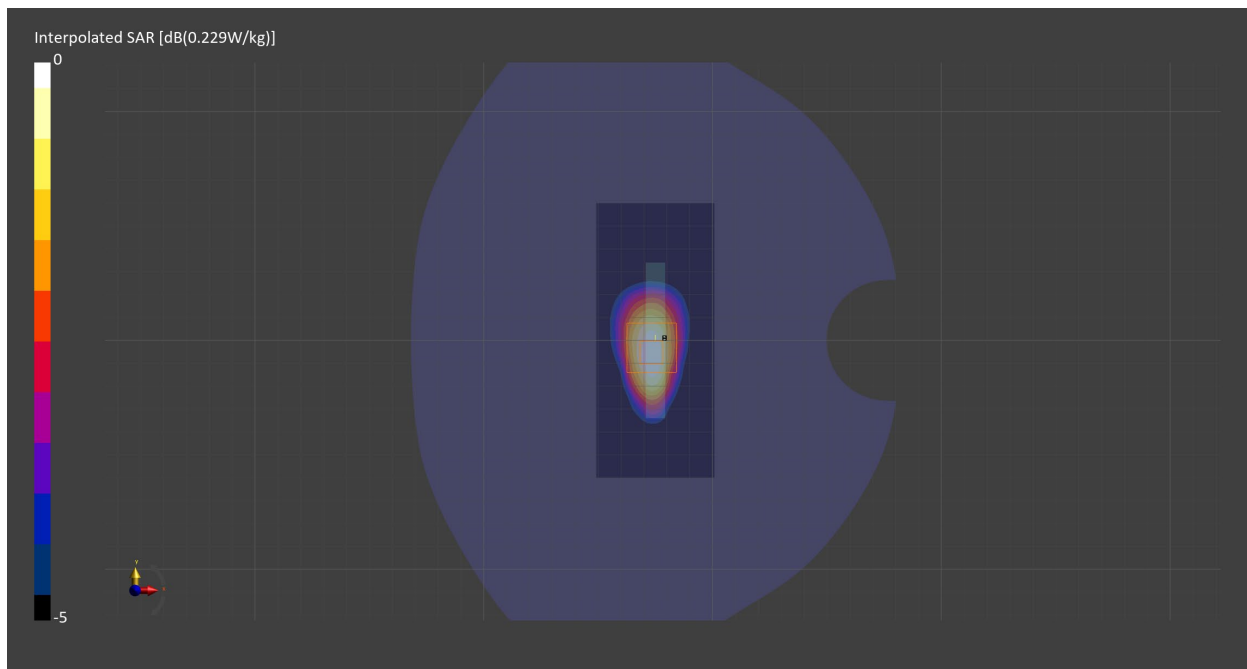
Probe   Calibration Date	EX3DV4 - SN7711   2023-03-29	Phantom	Twin-SAM V8.0 (30deg probe tilt) - SN2082
DAE   Calibration Date	DAE4 Sn1716   2023-03-16	TSL   Meas. Date	HBBL-600-10000   2023-Jun-23

## Scans Setup

	Area Scan	Zoom Scan
Grid Extents [mm]	51.6 x 120.0	30.0 x 30.0 x 30.0
Grid Steps [mm]	8.6 x 15.0	6.0 x 6.0 x 1.5
Sensor Surface [mm]	3.0	1.4
Graded Grid	n/a	Yes
M2/M1 [%]		83.2
Dist 3dB Peak [mm]		11.4

## Measurement Results

	Area Scan	Zoom Scan
psSAR1g [W/Kg]	0.131	<b>0.134</b>
psSAR10g [W/Kg]	0.075	<b>0.077</b>
Power Drift [dB]	n/a	-0.14





# Measurement Report for WLAN 2.4GHz, CHEEK, Normal, WiFi Main

## Exposure Conditions

Band	WLAN 2.4GHz	TSL Permittivity	38.1
Frequency [MHz]   Channel Number	2412.0   1	TSL Conductivity [S/m]	1.78
Group   UID	WLAN   10012-CAB	Phantom Section   TSL	RightHead   HSL
Conversion Factor	7.97	Test Distance [mm]	0.00
Communication Configuration	IEEE 802.11b WiFi 2.4 GHz (DSSS, 1 Mbps)		

## Hardware Setup

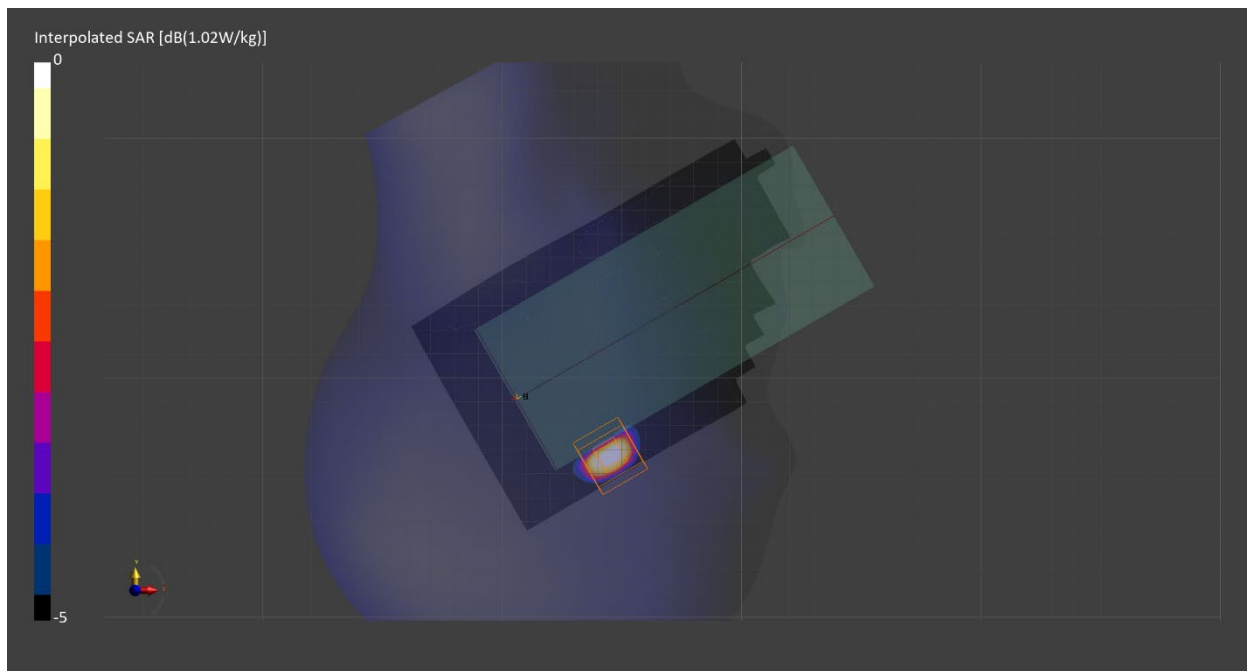
Probe   Calibration Date	EX3DV4 - SN7711   2023-03-29	Phantom	Twin-SAM V8.0 (30deg probe tilt) - SN2082
DAE   Calibration Date	DAE4 Sn1716   2023-03-16	TSL   Meas. Date	HBBL-600-10000   2023-Jul-10

## Scans Setup

	Area Scan	Zoom Scan
Grid Extents [mm]	100.0 x 200.0	30.0 x 30.0 x 30.0
Grid Steps [mm]	10.0 x 10.0	4.5 x 4.5 x 1.5
Sensor Surface [mm]	3.0	1.4
Graded Grid	n/a	Yes
M2/M1 [%]		77.6
Dist 3dB Peak [mm]		4.6

## Measurement Results

	Area Scan	Zoom Scan
psSAR1g [W/Kg]	0.388	<b>0.389</b>
psSAR10g [W/Kg]	0.146	<b>0.142</b>
Power Drift [dB]	n/a	-0.01



# Measurement Report for WLAN 5GHz, EDGE LEFT, Normal, WiFi Main

## Exposure Conditions

Band	WLAN 5GHz	TSL Permittivity	34.7
Frequency [MHz]   Channel Number	5795.0   159	TSL Conductivity [S/m]	5.17
Group   UID	WLAN   10114-CAD	Phantom Section   TSL	Flat   HSL
Conversion Factor	5.4	Test Distance [mm]	0.00
Communication Configuration	IEEE 802.11n (HT Greenfield, 13.5 Mbps, BPSK)		

## Hardware Setup

Probe   Calibration Date	EX3DV4 - SN7709   2022-12-12	Phantom	ELI V5.0 (20deg probe tilt) - SN1196
DAE   Calibration Date	DAE4 Sn1714   2022-11-23	TSL   Meas. Date	HBBL-600-10000   2023-Jul-20

## Scans Setup

	Area Scan	Zoom Scan
Grid Extents [mm]	51.6 x 200.0	22.0 x 22.0 x 22.0
Grid Steps [mm]	8.6 x 10.0	2.6 x 2.6 x 1.2
Sensor Surface [mm]	3.0	1.4
Graded Grid	n/a	Yes
M2/M1 [%]		58.2
Dist 3dB Peak [mm]		3.7

## Measurement Results

	Area Scan	Zoom Scan
psSAR1g [W/Kg]	1.58	<b>1.73</b>
psSAR10g [W/Kg]	0.383	<b>0.385</b>
Power Drift [dB]	n/a	-0.04

