

Measurement Report for GSM 850, CHEEK, Normal, CELL Main1

Exposure Conditions

Band	GSM 850	TSL Permittivity	43.2
Frequency [MHz] Channel Number	836.6 190	TSL Conductivity [S/m]	0.937
Group UID	GSM 10090-DAC	Phantom Section TSL	RightHead HSL
Conversion Factor	10.14	Test Distance [mm]	0.00
Communication Configuration	GPRS-FDD (TDMA, GMSK, TN 0-4)		

Hardware Setup

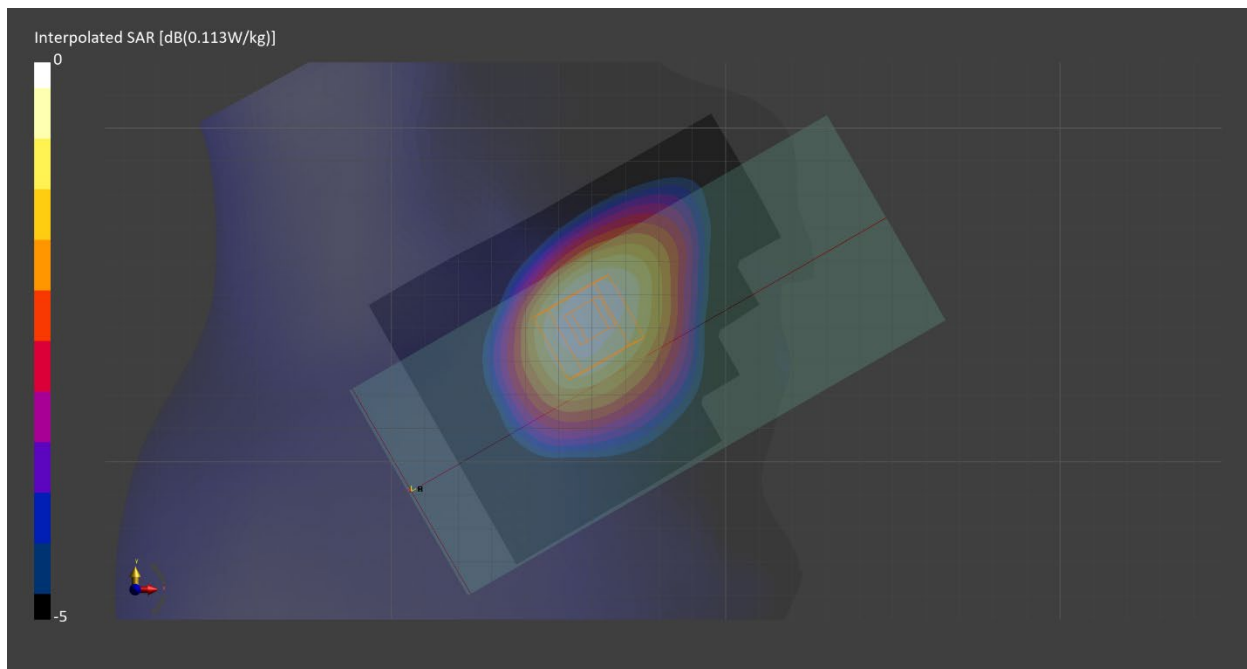
Probe Calibration Date	EX3DV4 - SN7710 2023-02-03	Phantom	Twin-SAM V8.0 (30deg probe tilt) - SN2082
DAE Calibration Date	DAE4 Sn1715 2023-01-23	TSL Meas. Date	HBBL600-10000V6 2023-Feb-20

Scans Setup

	Area Scan	Zoom Scan
Grid Extents [mm]	90.0 x 120.0	30.0 x 30.0 x 30.0
Grid Steps [mm]	15.0 x 15.0	6.0 x 6.0 x 1.5
Sensor Surface [mm]	3.0	1.4
Graded Grid	n/a	Yes
M2/M1 [%]		92.7
Dist 3dB Peak [mm]		21.6

Measurement Results

	Area Scan	Zoom Scan
psSAR1g [W/Kg]	0.098	0.103
psSAR10g [W/Kg]	0.067	0.079
Power Drift [dB]	-0.02	-0.05



Measurement Report for GSM 850, BACK, Normal, CELL Main1

Exposure Conditions

Band	GSM 850	TSL Permittivity	43.2
Frequency [MHz] Channel Number	836.6 190	TSL Conductivity [S/m]	0.937
Group UID	GSM 10090-DAC	Phantom Section TSL	Flat HSL
Conversion Factor	10.14	Test Distance [mm]	10.00
Communication Configuration	GPRS-FDD (TDMA, GMSK, TN 0-4)		

Hardware Setup

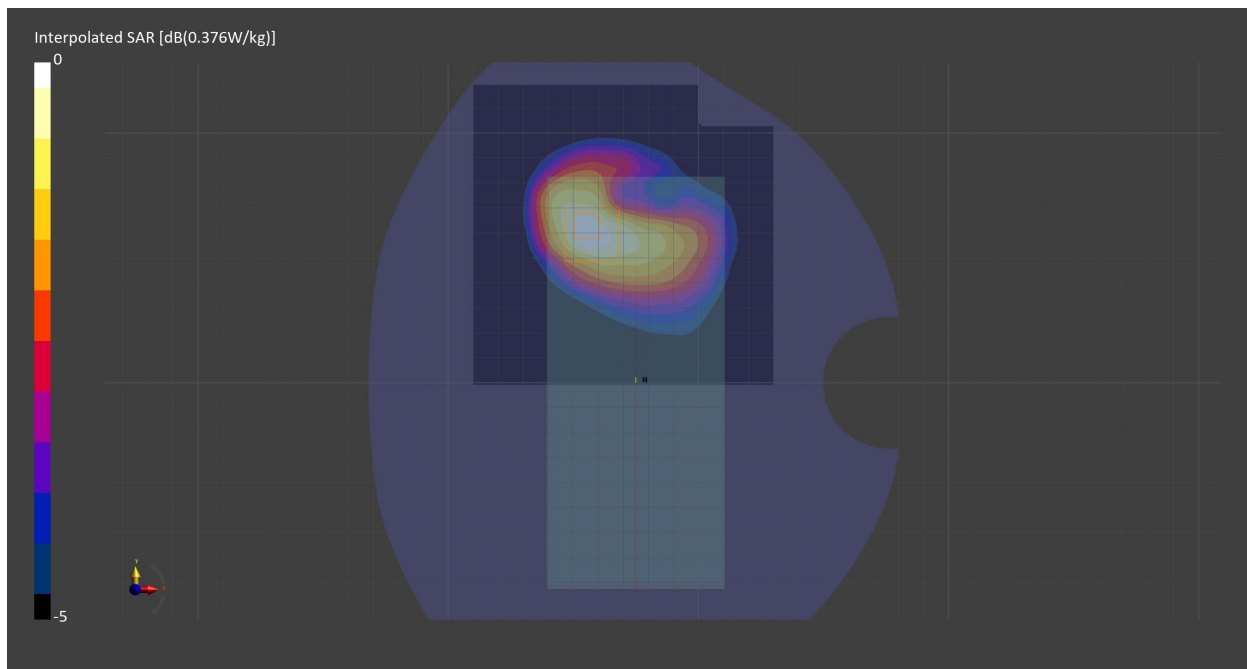
Probe Calibration Date	EX3DV4 - SN7710 2023-02-03	Phantom	Twin-SAM V8.0 (30deg probe tilt) - SN2082
DAE Calibration Date	DAE4 Sn1715 2023-01-23	TSL Meas. Date	HBBL600-10000V6 2023-Feb-20

Scans Setup

	Area Scan	Zoom Scan
Grid Extents [mm]	120.0 x 120.0	30.0 x 30.0 x 30.0
Grid Steps [mm]	15.0 x 15.0	6.0 x 6.0 x 1.5
Sensor Surface [mm]	3.0	1.4
Graded Grid	n/a	Yes
M2/M1 [%]		83.9
Dist 3dB Peak [mm]		15.3

Measurement Results

	Area Scan	Zoom Scan
psSAR1g [W/Kg]	0.325	0.334
psSAR10g [W/Kg]	0.212	0.210
Power Drift [dB]	0.02	0.11



Measurement Report for GSM 850, BACK, Normal, CELL Main1

Exposure Conditions

Band	GSM 850	TSL Permittivity	43.2
Frequency [MHz] Channel Number	836.6 190	TSL Conductivity [S/m]	0.937
Group UID	GSM 10024-DAC	Phantom Section TSL	Flat HSL
Conversion Factor	10.14	Test Distance [mm]	10.00
Communication Configuration	GPRS-FDD (TDMA, GMSK, TN 0-1)		

Hardware Setup

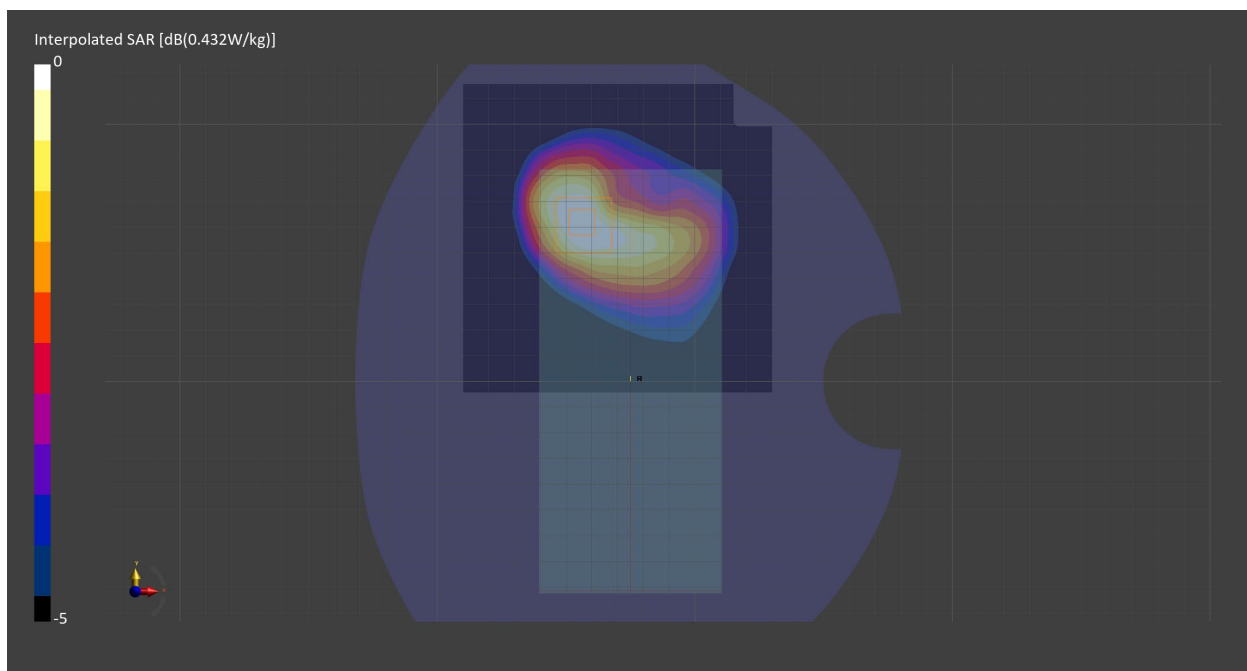
Probe Calibration Date	EX3DV4 - SN7710 2023-02-03	Phantom	Twin-SAM V8.0 (30deg probe tilt) - SN2082
DAE Calibration Date	DAE4 Sn1715 2023-01-23	TSL Meas. Date	HBBL600-10000V6 2023-Feb-20

Scans Setup

	Area Scan	Zoom Scan
Grid Extents [mm]	120.0 x 120.0	30.0 x 30.0 x 30.0
Grid Steps [mm]	15.0 x 15.0	6.0 x 6.0 x 1.5
Sensor Surface [mm]	3.0	1.4
Graded Grid	n/a	Yes
M2/M1 [%]		69.2
Dist 3dB Peak [mm]		15.3

Measurement Results

	Area Scan	Zoom Scan
psSAR1g [W/Kg]	0.379	0.391
psSAR10g [W/Kg]	0.254	0.249
Power Drift [dB]	-0.01	-0.00



Measurement Report for PCS 1900, CHEEK, Normal, CELL Main2

Exposure Conditions

Band	PCS 1900	TSL Permittivity	38.9
Frequency [MHz] Channel Number	1909.8 810	TSL Conductivity [S/m]	1.42
Group UID	GSM 10090-DAC	Phantom Section TSL	RightHead HSL
Conversion Factor	8.74	Test Distance [mm]	0.00
Communication Configuration	GPRS-FDD (TDMA, GMSK, TN 0-4)		

Hardware Setup

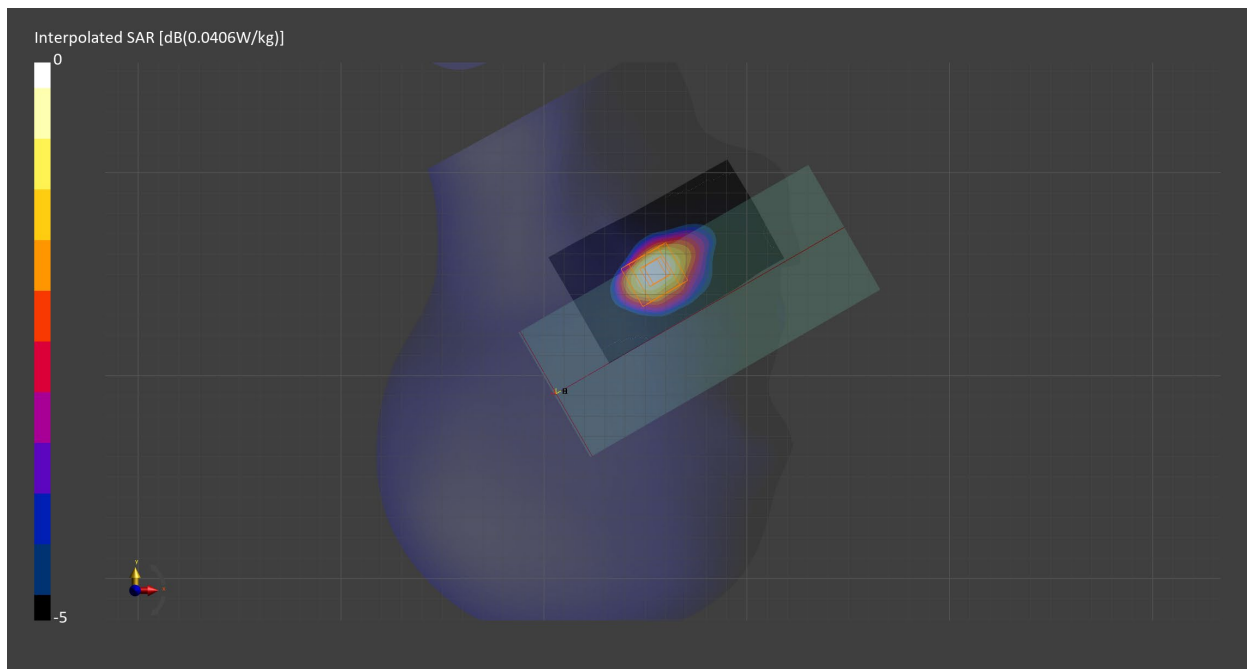
Probe Calibration Date	EX3DV4 - SN7709 2022-12-12	Phantom	Twin-SAM V8.0 (30deg probe tilt) - SN1742
DAE Calibration Date	DAE4 Sn1714 2022-11-23	TSL Meas. Date	HBBL1550-1950V3 2023-Feb-17

Scans Setup

	Area Scan	Zoom Scan
Grid Extents [mm]	60.0 x 120.0	30.0 x 30.0 x 30.0
Grid Steps [mm]	15.0 x 15.0	6.0 x 6.0 x 1.5
Sensor Surface [mm]	3.0	1.4
Graded Grid	n/a	Yes
M2/M1 [%]		92.8
Dist 3dB Peak [mm]		11.2

Measurement Results

	Area Scan	Zoom Scan
psSAR1g [W/Kg]	0.033	0.033
psSAR10g [W/Kg]	0.018	0.019
Power Drift [dB]	0.03	-0.10



Measurement Report for PCS 1900, FRONT, Normal, CELL Main2

Exposure Conditions

Band	PCS 1900	TSL Permittivity	38.9
Frequency [MHz] Channel Number	1909.8 810	TSL Conductivity [S/m]	1.42
Group UID	GSM 10090-DAC	Phantom Section TSL	Flat HSL
Conversion Factor	8.74	Test Distance [mm]	10.00
Communication Configuration	GPRS-FDD (TDMA, GMSK, TN 0-4)		

Hardware Setup

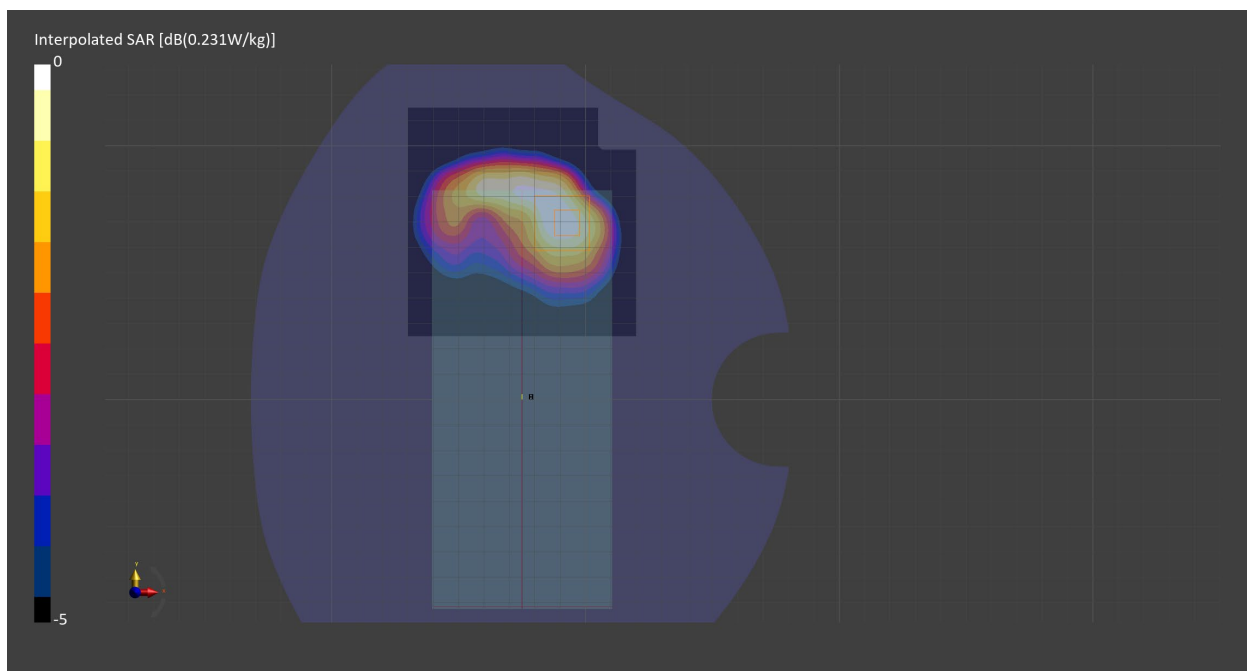
Probe Calibration Date	EX3DV4 - SN7709 2022-12-12	Phantom	Twin-SAM V8.0 (30deg probe tilt) - SN1742
DAE Calibration Date	DAE4 Sn1714 2022-11-23	TSL Meas. Date	HBBL1550-1950V3 2023-Feb-17

Scans Setup

	Area Scan	Zoom Scan
Grid Extents [mm]	90.0 x 90.0	30.0 x 30.0 x 30.0
Grid Steps [mm]	15.0 x 15.0	6.0 x 6.0 x 1.5
Sensor Surface [mm]	3.0	1.4
Graded Grid	n/a	Yes
M2/M1 [%]		82.4
Dist 3dB Peak [mm]		13.0

Measurement Results

	Area Scan	Zoom Scan
psSAR1g [W/Kg]	0.130	0.133
psSAR10g [W/Kg]	0.078	0.079
Power Drift [dB]	0.05	0.05



Measurement Report for PCS 1900, EDGE BOTTOM, Normal, CELL Main2

Exposure Conditions

Band	PCS 1900	TSL Permittivity	38.9
Frequency [MHz] Channel Number	1909.8 810	TSL Conductivity [S/m]	1.42
Group UID	GSM 10090-DAC	Phantom Section TSL	Flat HSL
Conversion Factor	8.74	Test Distance [mm]	10.00
Communication Configuration	GPRS-FDD (TDMA, GMSK, TN 0-4)		

Hardware Setup

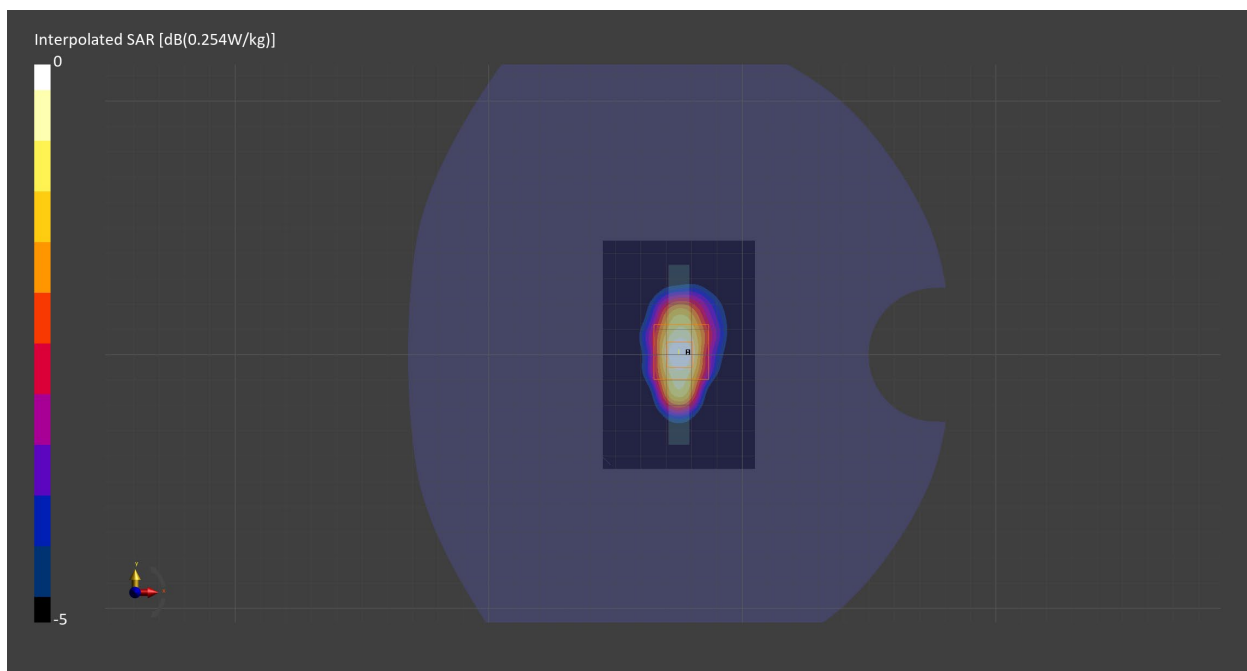
Probe Calibration Date	EX3DV4 - SN7709 2022-12-12	Phantom	Twin-SAM V8.0 (30deg probe tilt) - SN1742
DAE Calibration Date	DAE4 Sn1714 2022-11-23	TSL Meas. Date	HBBL1550-1950V3 2023-Feb-17

Scans Setup

	Area Scan	Zoom Scan
Grid Extents [mm]	60.0 x 90.0	30.0 x 30.0 x 30.0
Grid Steps [mm]	15.0 x 15.0	6.0 x 6.0 x 1.5
Sensor Surface [mm]	3.0	1.4
Graded Grid	n/a	Yes
M2/M1 [%]		82.2
Dist 3dB Peak [mm]		11.4

Measurement Results

	Area Scan	Zoom Scan
psSAR1g [W/Kg]	0.205	0.205
psSAR10g [W/Kg]	0.110	0.115
Power Drift [dB]	0.06	-0.07



Measurement Report for PCS 1900, EDGE BOTTOM, Normal, CELL Main2

Exposure Conditions

Band	PCS 1900	TSL Permittivity	38.9
Frequency [MHz] Channel Number	1909.8 810	TSL Conductivity [S/m]	1.42
Group UID	GSM 10024-DAC	Phantom Section TSL	Flat HSL
Conversion Factor	8.74	Test Distance [mm]	10.00
Communication Configuration	GPRS-FDD (TDMA, GMSK, TN 0-1)		

Hardware Setup

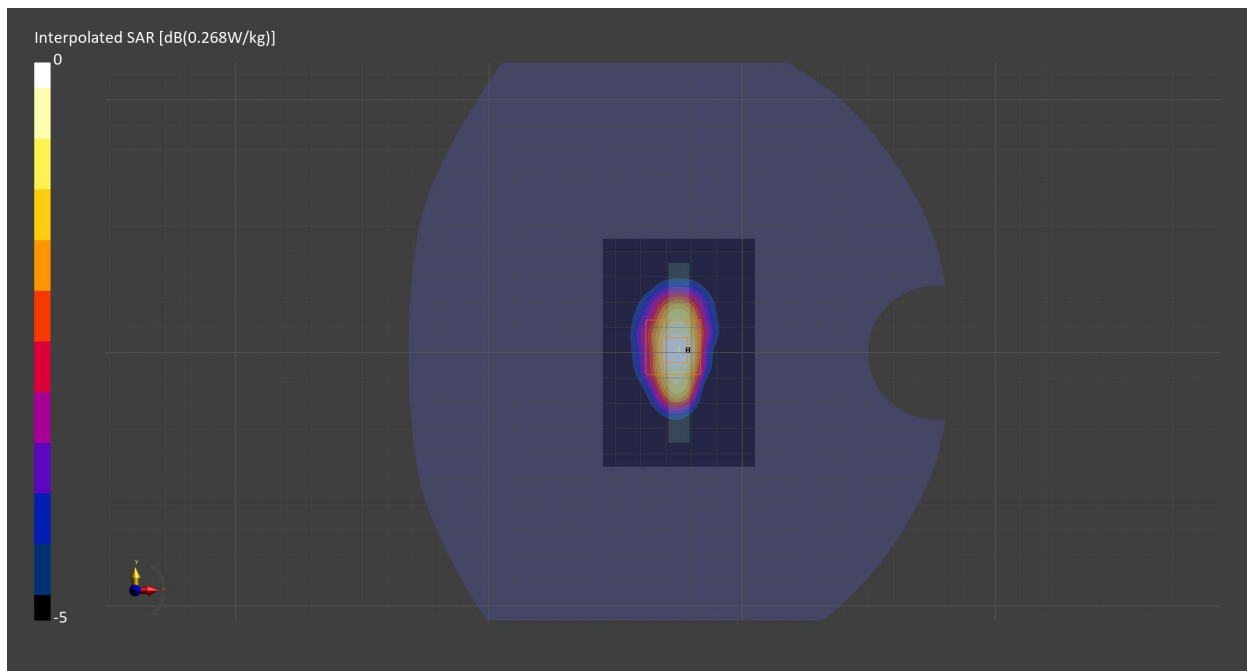
Probe Calibration Date	EX3DV4 - SN7709 2022-12-12	Phantom	Twin-SAM V8.0 (30deg probe tilt) - SN1742
DAE Calibration Date	DAE4 Sn1714 2022-11-23	TSL Meas. Date	HBBL1550-1950V3 2023-Feb-17

Scans Setup

	Area Scan	Zoom Scan
Grid Extents [mm]	60.0 x 90.0	30.0 x 30.0 x 30.0
Grid Steps [mm]	15.0 x 15.0	6.0 x 6.0 x 1.5
Sensor Surface [mm]	3.0	1.4
Graded Grid	n/a	Yes
M2/M1 [%]		83.0
Dist 3dB Peak [mm]		12.0

Measurement Results

	Area Scan	Zoom Scan
psSAR1g [W/Kg]	0.217	0.221
psSAR10g [W/Kg]	0.118	0.123
Power Drift [dB]	0.02	-0.10



Measurement Report for Band 2, CHEEK, Normal, CELL Main2

Exposure Conditions

Band	Band 2	TSL Permittivity	39.0
Frequency [MHz] Channel Number	1880.0 9400	TSL Conductivity [S/m]	1.39
Group UID	WCDMA 10011-CAC	Phantom Section TSL	RightHead HSL
Conversion Factor	8.74	Test Distance [mm]	0.00
Communication Configuration	UMTS-FDD (WCDMA)		

Hardware Setup

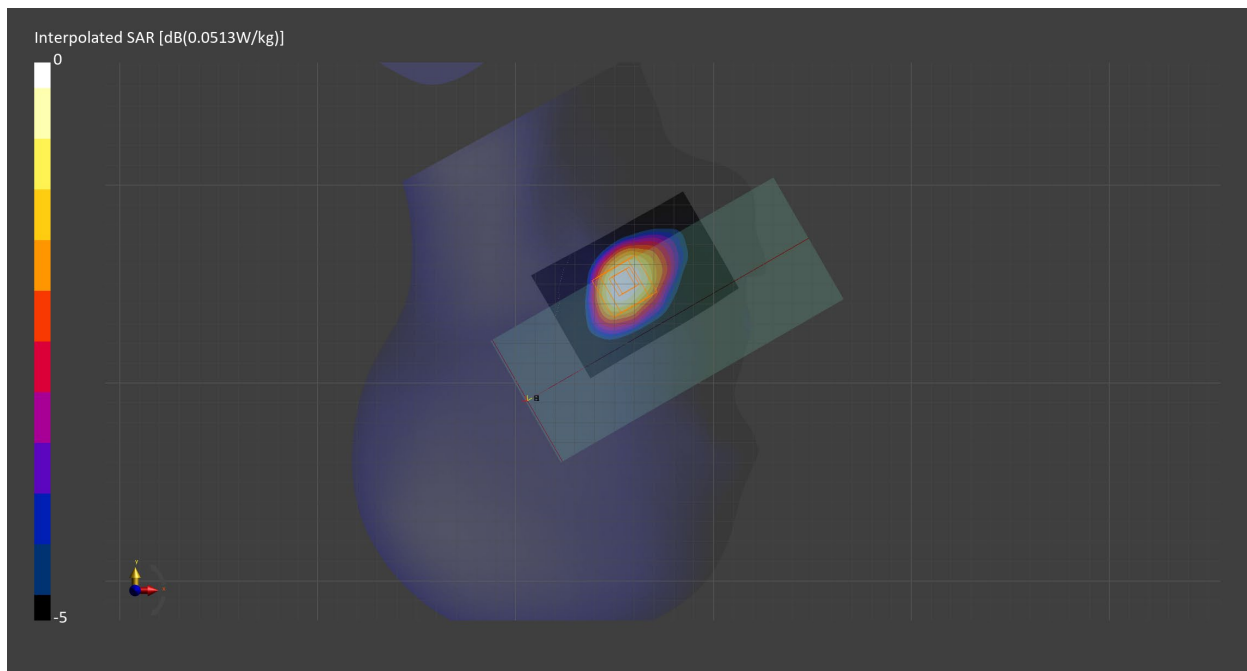
Probe Calibration Date	EX3DV4 - SN7709 2022-12-12	Phantom	Twin-SAM V8.0 (30deg probe tilt) - SN1742
DAE Calibration Date	DAE4 Sn1714 2022-11-23	TSL Meas. Date	HBBL1550-1950V3 2023-Feb-17

Scans Setup

	Area Scan	Zoom Scan
Grid Extents [mm]	60.0 x 90.0	30.0 x 30.0 x 30.0
Grid Steps [mm]	15.0 x 15.0	6.0 x 6.0 x 1.5
Sensor Surface [mm]	3.0	1.4
Graded Grid	n/a	Yes
M2/M1 [%]		90.2
Dist 3dB Peak [mm]		13.4

Measurement Results

	Area Scan	Zoom Scan
psSAR1g [W/Kg]	0.042	0.048
psSAR10g [W/Kg]	0.025	0.029
Power Drift [dB]	0.87	-0.05



Measurement Report for Band 2, BACK, Normal, CELL Main2

Exposure Conditions

Band	Band 2	TSL Permittivity	39.0
Frequency [MHz] Channel Number	1880.0 9400	TSL Conductivity [S/m]	1.39
Group UID	WCDMA 10011-CAC	Phantom Section TSL	Flat HSL
Conversion Factor	8.74	Test Distance [mm]	10.00
Communication Configuration	UMTS-FDD (WCDMA)		

Hardware Setup

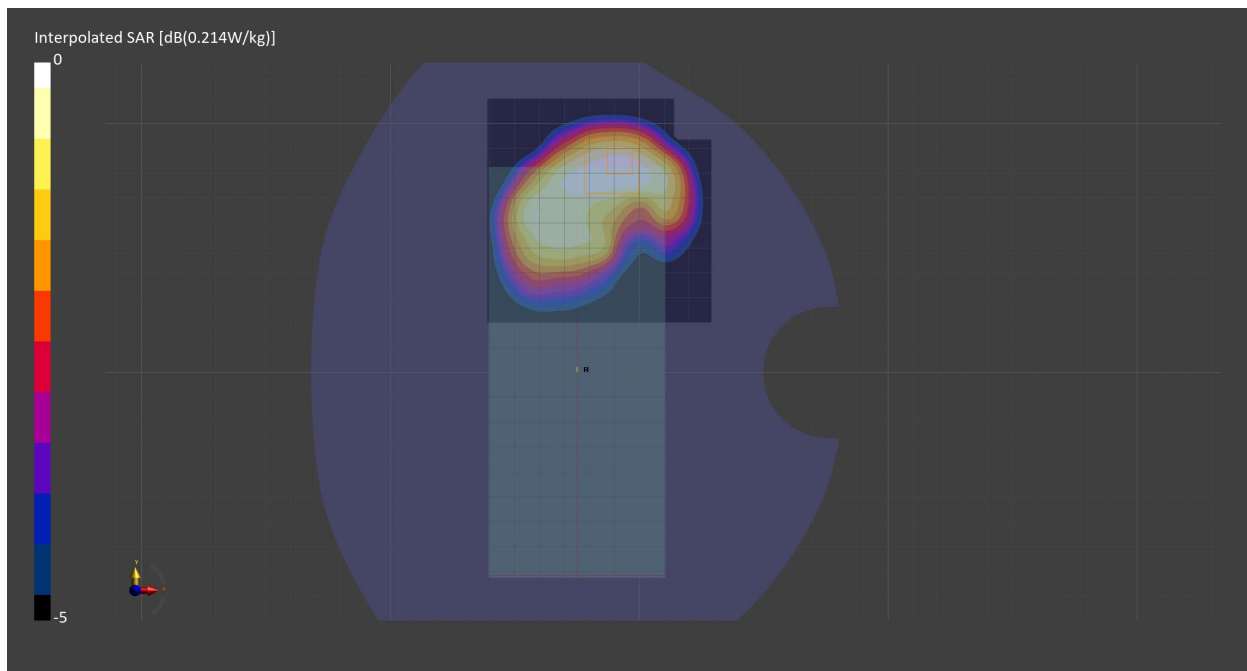
Probe Calibration Date	EX3DV4 - SN7709 2022-12-12	Phantom	Twin-SAM V8.0 (30deg probe tilt) - SN1742
DAE Calibration Date	DAE4 Sn1714 2022-11-23	TSL Meas. Date	HBBL1550-1950V3 2023-Feb-17

Scans Setup

	Area Scan	Zoom Scan
Grid Extents [mm]	90.0 x 90.0	30.0 x 30.0 x 30.0
Grid Steps [mm]	15.0 x 15.0	6.0 x 6.0 x 1.5
Sensor Surface [mm]	3.0	1.4
Graded Grid	n/a	Yes
M2/M1 [%]		83.7
Dist 3dB Peak [mm]		12.0

Measurement Results

	Area Scan	Zoom Scan
psSAR1g [W/Kg]	0.179	0.198
psSAR10g [W/Kg]	0.109	0.115
Power Drift [dB]	-0.06	0.03



Measurement Report for Band 2, EDGE BOTTOM, Normal, CELL Main2

Exposure Conditions

Band	Band 2	TSL Permittivity	39.0
Frequency [MHz] Channel Number	1880.0 9400	TSL Conductivity [S/m]	1.39
Group UID	WCDMA 10011-CAC	Phantom Section TSL	Flat HSL
Conversion Factor	8.74	Test Distance [mm]	10.00
Communication Configuration	UMTS-FDD (WCDMA)		

Hardware Setup

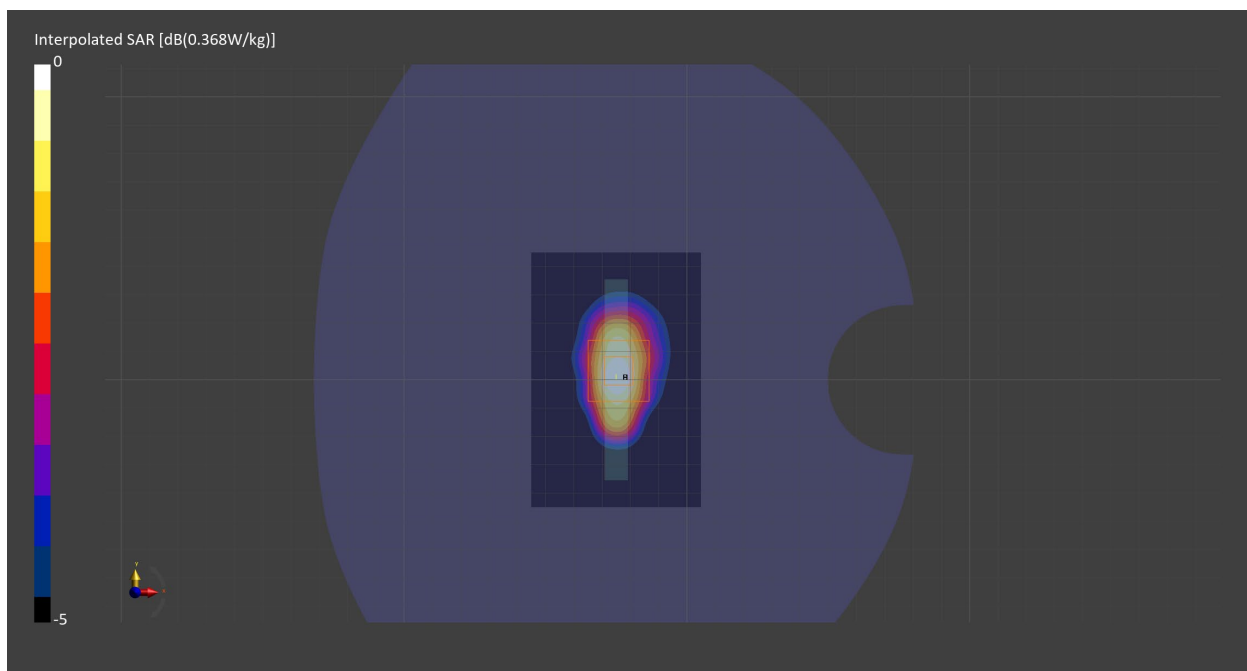
Probe Calibration Date	EX3DV4 - SN7709 2022-12-12	Phantom	Twin-SAM V8.0 (30deg probe tilt) - SN1742
DAE Calibration Date	DAE4 Sn1714 2022-11-23	TSL Meas. Date	HBBL1550-1950V3 2023-Feb-17

Scans Setup

	Area Scan	Zoom Scan
Grid Extents [mm]	60.0 x 90.0	30.0 x 30.0 x 30.0
Grid Steps [mm]	15.0 x 15.0	6.0 x 6.0 x 1.5
Sensor Surface [mm]	3.0	1.4
Graded Grid	n/a	Yes
M2/M1 [%]		82.9
Dist 3dB Peak [mm]		12.0

Measurement Results

	Area Scan	Zoom Scan
psSAR1g [W/Kg]	0.298	0.305
psSAR10g [W/Kg]	0.161	0.171
Power Drift [dB]	0.04	-0.09



Measurement Report for Band 4, CHEEK, Normal, CELL Main2

Exposure Conditions

Band	Band 4	TSL Permittivity	39.4
Frequency [MHz] Channel Number	1732.6 1413	TSL Conductivity [S/m]	1.37
Group UID	WCDMA 10011-CAC	Phantom Section TSL	RightHead HSL
Conversion Factor	8.89	Test Distance [mm]	0.00
Communication Configuration	UMTS-FDD (WCDMA)		

Hardware Setup

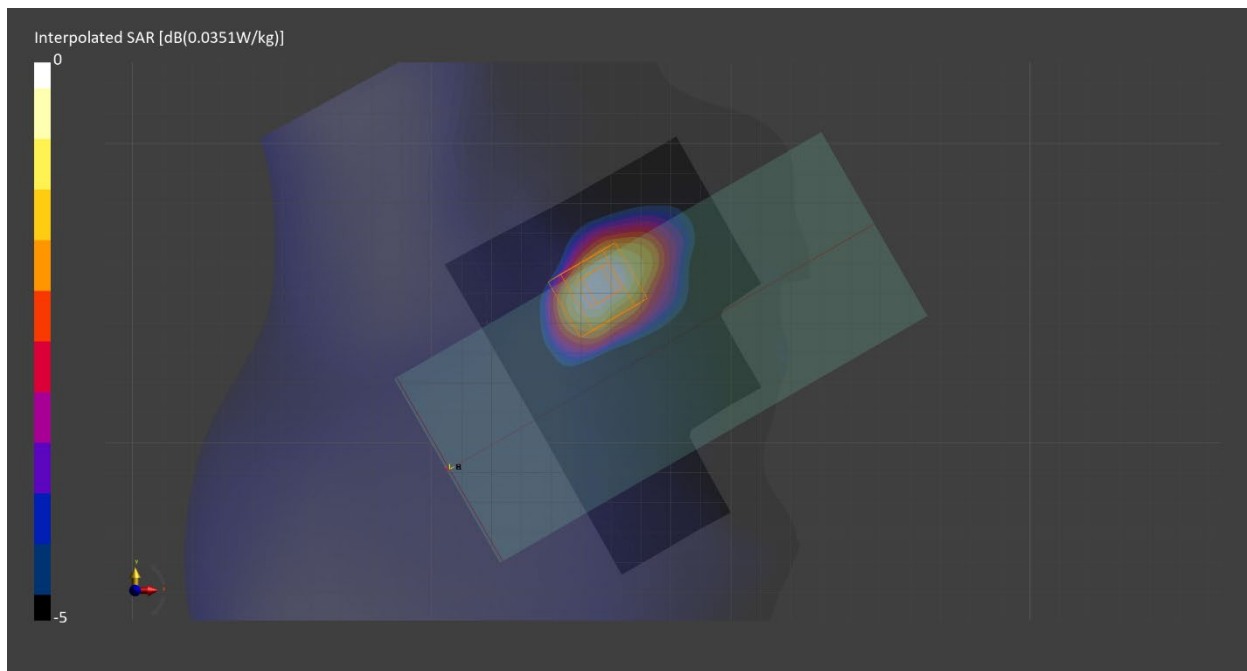
Probe Calibration Date	EX3DV4 - SN7711 2022-03-11	Phantom	Twin-SAM V8.0 (30deg probe tilt) - SN2084
DAE Calibration Date	DAE4 Sn1716 2022-03-08	TSL Meas. Date	HBBL600-10000V6 2023-Feb-20

Scans Setup

	Area Scan	Zoom Scan
Grid Extents [mm]	120.0 x 90.0	30.0 x 30.0 x 30.0
Grid Steps [mm]	15.0 x 15.0	6.0 x 6.0 x 1.5
Sensor Surface [mm]	3.0	1.4
Graded Grid	n/a	Yes
M2/M1 [%]		90.6
Dist 3dB Peak [mm]		13.8

Measurement Results

	Area Scan	Zoom Scan
psSAR1g [W/Kg]	0.029	0.030
psSAR10g [W/Kg]	0.017	0.019
Power Drift [dB]	-0.05	-0.11



Measurement Report for Band 4, BACK, Normal, CELL Main2

Exposure Conditions

Band	Band 4	TSL Permittivity	39.4
Frequency [MHz] Channel Number	1732.6 1413	TSL Conductivity [S/m]	1.37
Group UID	WCDMA 10011-CAC	Phantom Section TSL	Flat HSL
Conversion Factor	8.89	Test Distance [mm]	10.00
Communication Configuration	UMTS-FDD (WCDMA)		

Hardware Setup

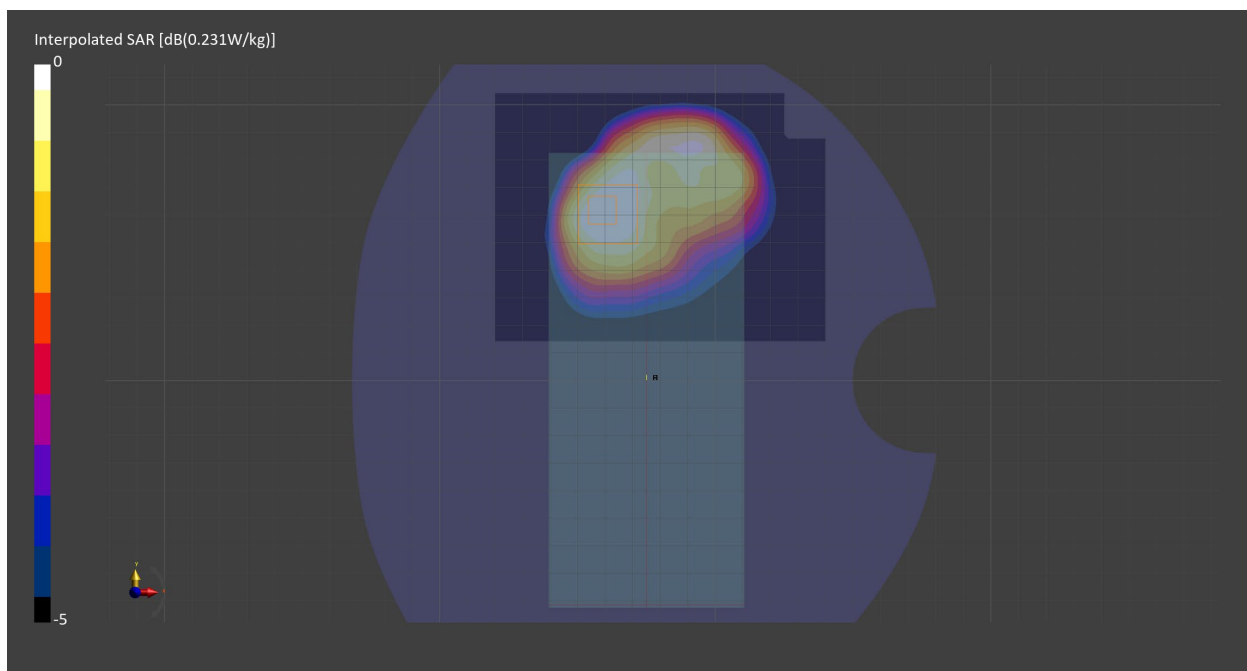
Probe Calibration Date	EX3DV4 - SN7711 2022-03-11	Phantom	Twin-SAM V8.0 (30deg probe tilt) - SN2084
DAE Calibration Date	DAE4 Sn1716 2022-03-08	TSL Meas. Date	HBBL600-10000V6 2023-Feb-20

Scans Setup

	Area Scan	Zoom Scan
Grid Extents [mm]	120.0 x 90.0	30.0 x 30.0 x 30.0
Grid Steps [mm]	15.0 x 15.0	6.0 x 6.0 x 1.5
Sensor Surface [mm]	3.0	1.4
Graded Grid	n/a	Yes
M2/M1 [%]		83.9
Dist 3dB Peak [mm]		13.7

Measurement Results

	Area Scan	Zoom Scan
psSAR1g [W/Kg]	0.198	0.209
psSAR10g [W/Kg]	0.124	0.129
Power Drift [dB]	-0.07	-0.02



Measurement Report for Band 4, EDGE BOTTOM, Normal, CELL Main2

Exposure Conditions

Band	Band 4	TSL Permittivity	39.4
Frequency [MHz] Channel Number	1732.6 1413	TSL Conductivity [S/m]	1.37
Group UID	WCDMA 10011-CAC	Phantom Section TSL	Flat HSL
Conversion Factor	8.89	Test Distance [mm]	10.00
Communication Configuration	UMTS-FDD (WCDMA)		

Hardware Setup

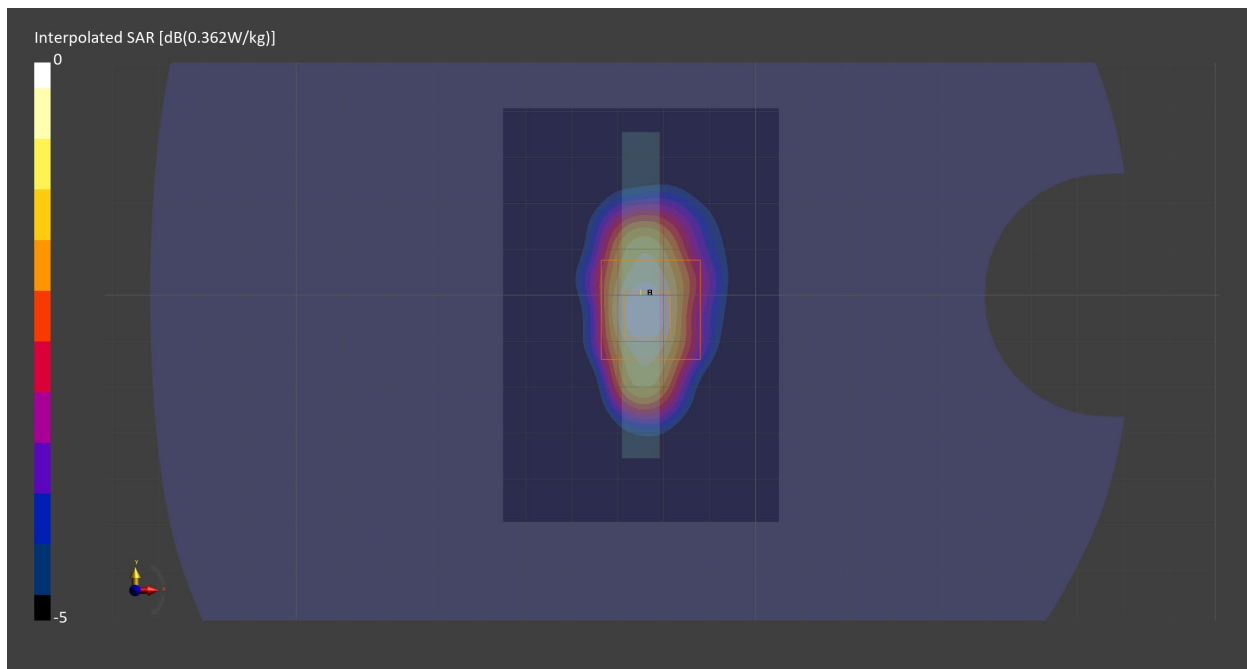
Probe Calibration Date	EX3DV4 - SN7711 2022-03-11	Phantom	Twin-SAM V8.0 (30deg probe tilt) - SN2084
DAE Calibration Date	DAE4 Sn1716 2022-03-08	TSL Meas. Date	HBBL600-10000V6 2023-Feb-20

Scans Setup

	Area Scan	Zoom Scan
Grid Extents [mm]	60.0 x 90.0	30.0 x 30.0 x 30.0
Grid Steps [mm]	15.0 x 15.0	6.0 x 6.0 x 1.5
Sensor Surface [mm]	3.0	1.4
Graded Grid	n/a	Yes
M2/M1 [%]		82.9
Dist 3dB Peak [mm]		11.4

Measurement Results

	Area Scan	Zoom Scan
psSAR1g [W/Kg]	0.294	0.298
psSAR10g [W/Kg]	0.161	0.166
Power Drift [dB]	0.05	0.02



Measurement Report for Band 2, CHEEK, Normal, CELL Main1

Exposure Conditions

Band	Band 2	TSL Permittivity	39.0
Frequency [MHz] Channel Number	1880.0 18900	TSL Conductivity [S/m]	1.39
Group UID	LTE-FDD 10169-CAF	Phantom Section TSL	RightHead HSL
Conversion Factor	8.74	Test Distance [mm]	0.00
Communication Configuration	LTE-FDD (SC-FDMA, 1 RB, 20 MHz, QPSK) RBPosition:High AntennaCfg:SISO		

Hardware Setup

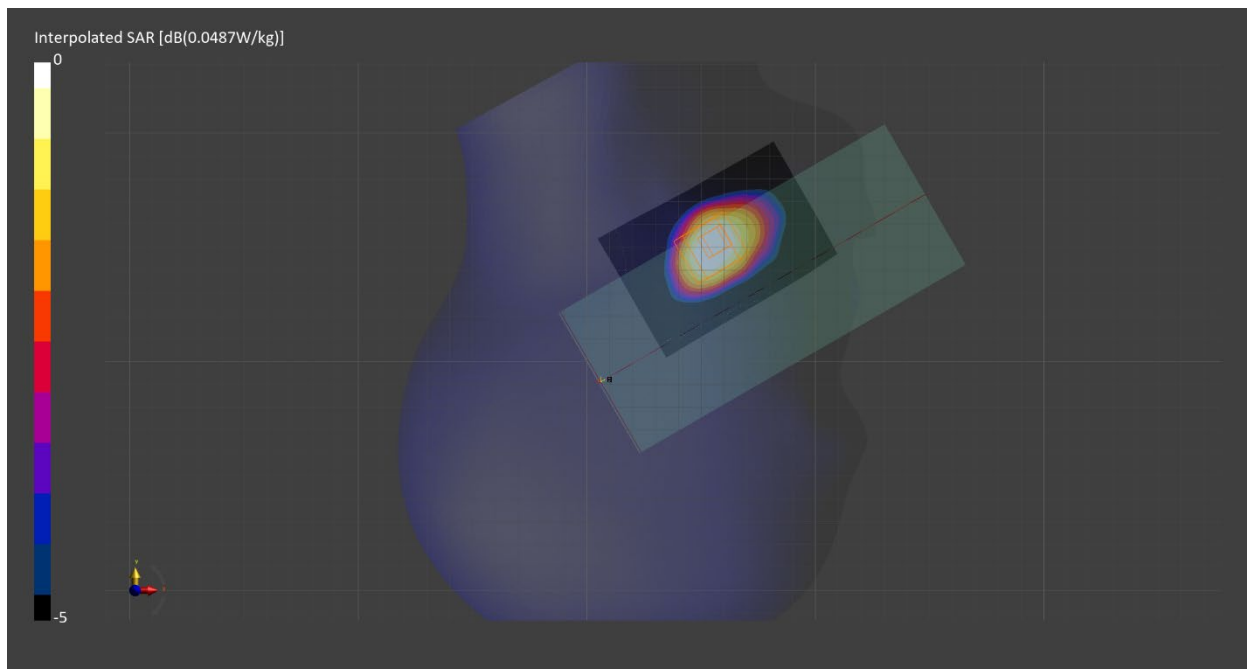
Probe Calibration Date	EX3DV4 - SN7709 2022-12-12	Phantom	Twin-SAM V8.0 (30deg probe tilt) - SN1742
DAE Calibration Date	DAE4 Sn1714 2022-11-23	TSL Meas. Date	HBBL1550-1950V3 2023-Feb-22

Scans Setup

	Area Scan	Zoom Scan
Grid Extents [mm]	60.0 x 90.0	30.0 x 30.0 x 30.0
Grid Steps [mm]	15.0 x 15.0	6.0 x 6.0 x 1.5
Sensor Surface [mm]	3.0	1.4
Graded Grid	n/a	Yes
M2/M1 [%]		90.5
Dist 3dB Peak [mm]		13.6

Measurement Results

	Area Scan	Zoom Scan
psSAR1g [W/Kg]	0.041	0.042
psSAR10g [W/Kg]	0.024	0.026
Power Drift [dB]	0.12	-0.10



Measurement Report for Band 2, BACK, Normal, CELL Main1

Exposure Conditions

Band	Band 2	TSL Permittivity	39.0
Frequency [MHz] Channel Number	1880.0 18900	TSL Conductivity [S/m]	1.39
Group UID	LTE-FDD 10169-CAF	Phantom Section TSL	Flat HSL
Conversion Factor	8.74	Test Distance [mm]	10.00
Communication Configuration	LTE-FDD (SC-FDMA, 1 RB, 20 MHz, QPSK) RBPosition:High AntennaCfg:SISO		

Hardware Setup

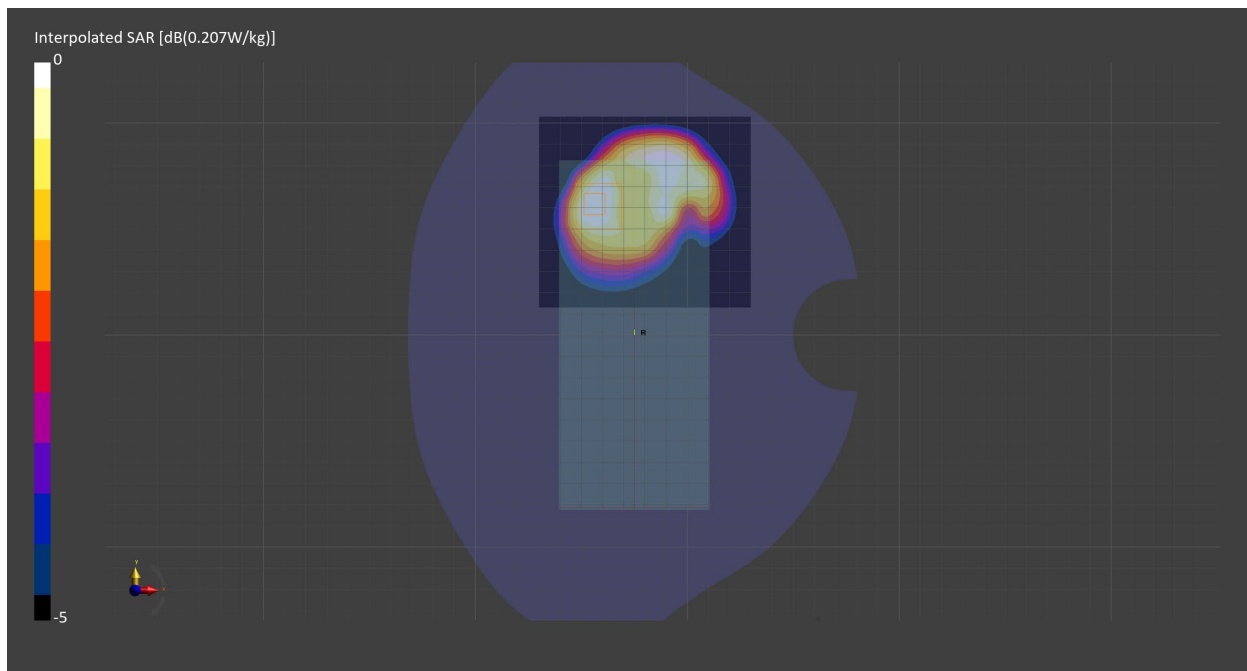
Probe Calibration Date	EX3DV4 - SN7709 2022-12-12	Phantom	Twin-SAM V8.0 (30deg probe tilt) - SN1742
DAE Calibration Date	DAE4 Sn1714 2022-11-23	TSL Meas. Date	HBBL1550-1950V3 2023-Feb-22

Scans Setup

	Area Scan	Zoom Scan
Grid Extents [mm]	100.0 x 90.0	30.0 x 30.0 x 30.0
Grid Steps [mm]	10.0 x 15.0	6.0 x 6.0 x 1.5
Sensor Surface [mm]	3.0	1.4
Graded Grid	n/a	Yes
M2/M1 [%]		85.6
Dist 3dB Peak [mm]		11.9

Measurement Results

	Area Scan	Zoom Scan
psSAR1g [W/Kg]	0.173	0.176
psSAR10g [W/Kg]	0.104	0.108
Power Drift [dB]	0.03	-0.04



Measurement Report for Band 2, EDGE BOTTOM, Normal, CELL Main1

Exposure Conditions

Band	Band 2	TSL Permittivity	39.0
Frequency [MHz] Channel Number	1880.0 18900	TSL Conductivity [S/m]	1.39
Group UID	LTE-FDD 10169-CAF	Phantom Section TSL	Flat HSL
Conversion Factor	8.74	Test Distance [mm]	10.00
Communication Configuration	LTE-FDD (SC-FDMA, 1 RB, 20 MHz, QPSK) RBPosition:High AntennaCfg:SISO		

Hardware Setup

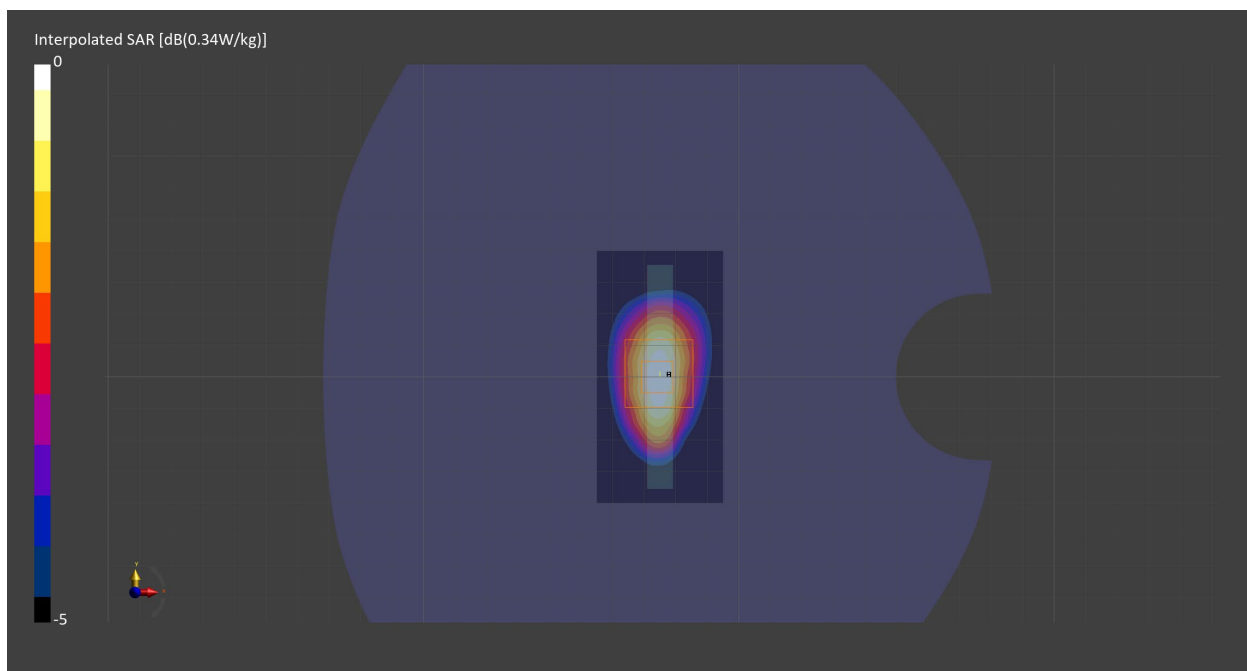
Probe Calibration Date	EX3DV4 - SN7709 2022-12-12	Phantom	Twin-SAM V8.0 (30deg probe tilt) - SN1742
DAE Calibration Date	DAE4 Sn1714 2022-11-23	TSL Meas. Date	HBBL1550-1950V3 2023-Feb-22

Scans Setup

	Area Scan	Zoom Scan
Grid Extents [mm]	40.0 x 80.0	30.0 x 30.0 x 30.0
Grid Steps [mm]	10.0 x 10.0	6.0 x 6.0 x 1.5
Sensor Surface [mm]	3.0	1.4
Graded Grid	n/a	Yes
M2/M1 [%]		79.4
Dist 3dB Peak [mm]		11.4

Measurement Results

	Area Scan	Zoom Scan
psSAR1g [W/Kg]	0.273	0.281
psSAR10g [W/Kg]	0.148	0.158
Power Drift [dB]	0.05	-0.02



Measurement Report for Band 4, CHEEK, Normal, CELL Main2

Exposure Conditions

Band	Band 4	TSL Permittivity	39.4
Frequency [MHz] Channel Number	1732.5 20175	TSL Conductivity [S/m]	1.37
Group UID	LTE-FDD 10169-CAF	Phantom Section TSL	RightHead HSL
Conversion Factor	8.89	Test Distance [mm]	0.00
Communication Configuration	LTE-FDD (SC-FDMA, 1 RB, 20 MHz, QPSK) RBPosition:Low AntennaCfg:SISO		

Hardware Setup

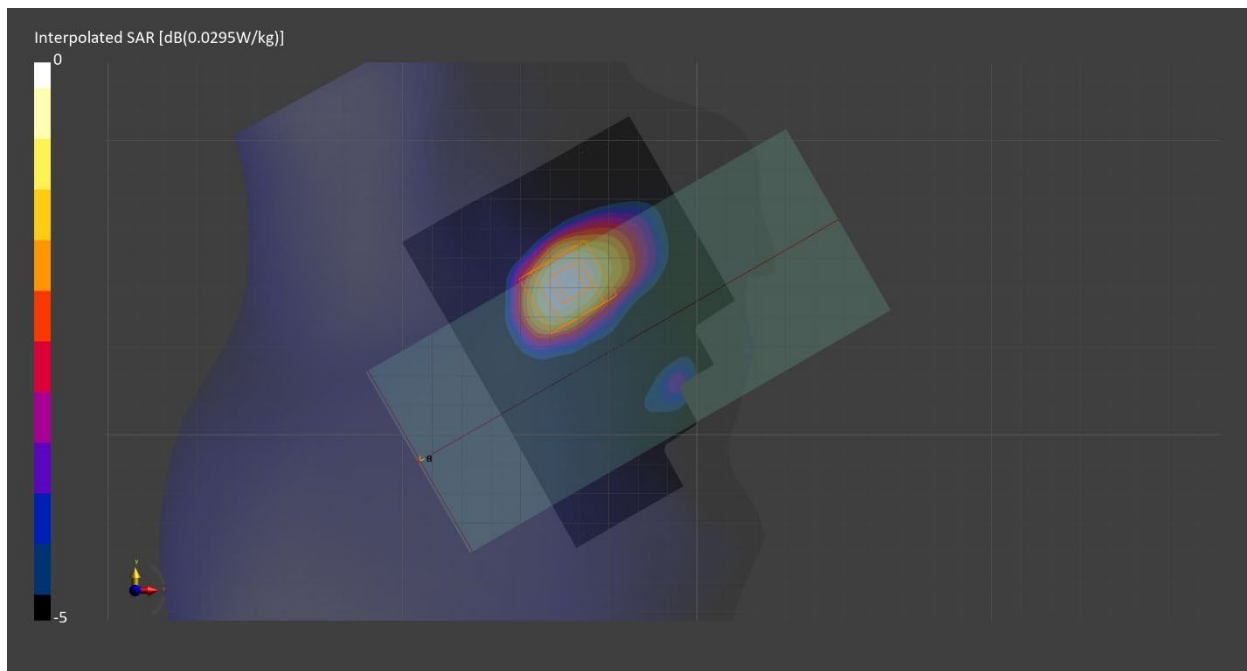
Probe Calibration Date	EX3DV4 - SN7711 2022-03-11	Phantom	Twin-SAM V8.0 (30deg probe tilt) - SN2084
DAE Calibration Date	DAE4 Sn1716 2022-03-08	TSL Meas. Date	HBBL600-10000V6 2023-Feb-20

Scans Setup

	Area Scan	Zoom Scan
Grid Extents [mm]	120.0 x 90.0	30.0 x 30.0 x 30.0
Grid Steps [mm]	15.0 x 15.0	6.0 x 6.0 x 1.5
Sensor Surface [mm]	3.0	1.4
Graded Grid	n/a	Yes
M2/M1 [%]		91.4
Dist 3dB Peak [mm]		8.8

Measurement Results

	Area Scan	Zoom Scan
psSAR1g [W/Kg]	0.024	0.026
psSAR10g [W/Kg]	0.014	0.016
Power Drift [dB]	0.01	0.03



Measurement Report for Band 4, BACK, Normal, CELL Main2

Exposure Conditions

Band	Band 4	TSL Permittivity	39.4
Frequency [MHz] Channel Number	1732.5 20175	TSL Conductivity [S/m]	1.37
Group UID	LTE-FDD 10169-CAF	Phantom Section TSL	Flat HSL
Conversion Factor	8.89	Test Distance [mm]	10.00
Communication Configuration	LTE-FDD (SC-FDMA, 1 RB, 20 MHz, QPSK) RBPosition:Low AntennaCfg:SISO		

Hardware Setup

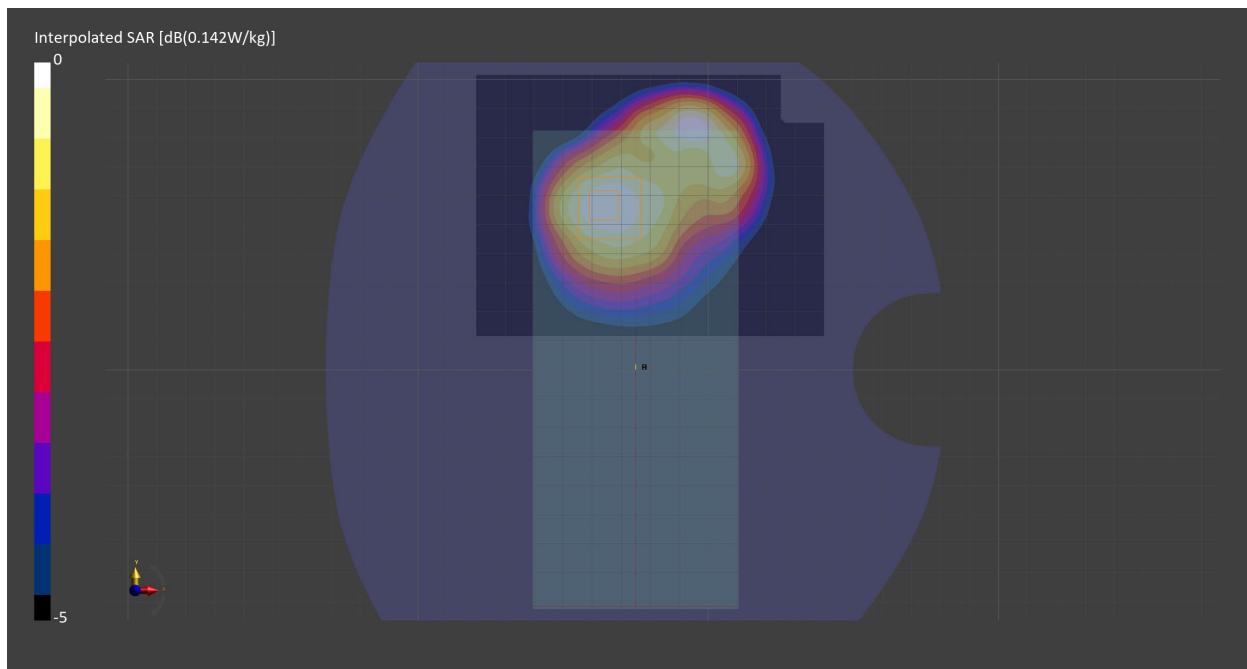
Probe Calibration Date	EX3DV4 - SN7711 2022-03-11	Phantom	Twin-SAM V8.0 (30deg probe tilt) - SN2084
DAE Calibration Date	DAE4 Sn1716 2022-03-08	TSL Meas. Date	HBBL600-10000V6 2023-Feb-20

Scans Setup

	Area Scan	Zoom Scan
Grid Extents [mm]	120.0 x 90.0	30.0 x 30.0 x 30.0
Grid Steps [mm]	15.0 x 15.0	6.0 x 6.0 x 1.5
Sensor Surface [mm]	3.0	1.4
Graded Grid	n/a	Yes
M2/M1 [%]		84.6
Dist 3dB Peak [mm]		> 15.0

Measurement Results

	Area Scan	Zoom Scan
psSAR1g [W/Kg]	0.120	0.122
psSAR10g [W/Kg]	0.074	0.079
Power Drift [dB]	0.03	0.00



Measurement Report for Band 4, EDGE BOTTOM, Normal, CELL Main2

Exposure Conditions

Band	Band 4	TSL Permittivity	39.4
Frequency [MHz] Channel Number	1732.5 20175	TSL Conductivity [S/m]	1.37
Group UID	LTE-FDD 10169-CAF	Phantom Section TSL	Flat HSL
Conversion Factor	8.89	Test Distance [mm]	10.00
Communication Configuration	LTE-FDD (SC-FDMA, 1 RB, 20 MHz, QPSK) RBPosition:Low AntennaCfg:SISO		

Hardware Setup

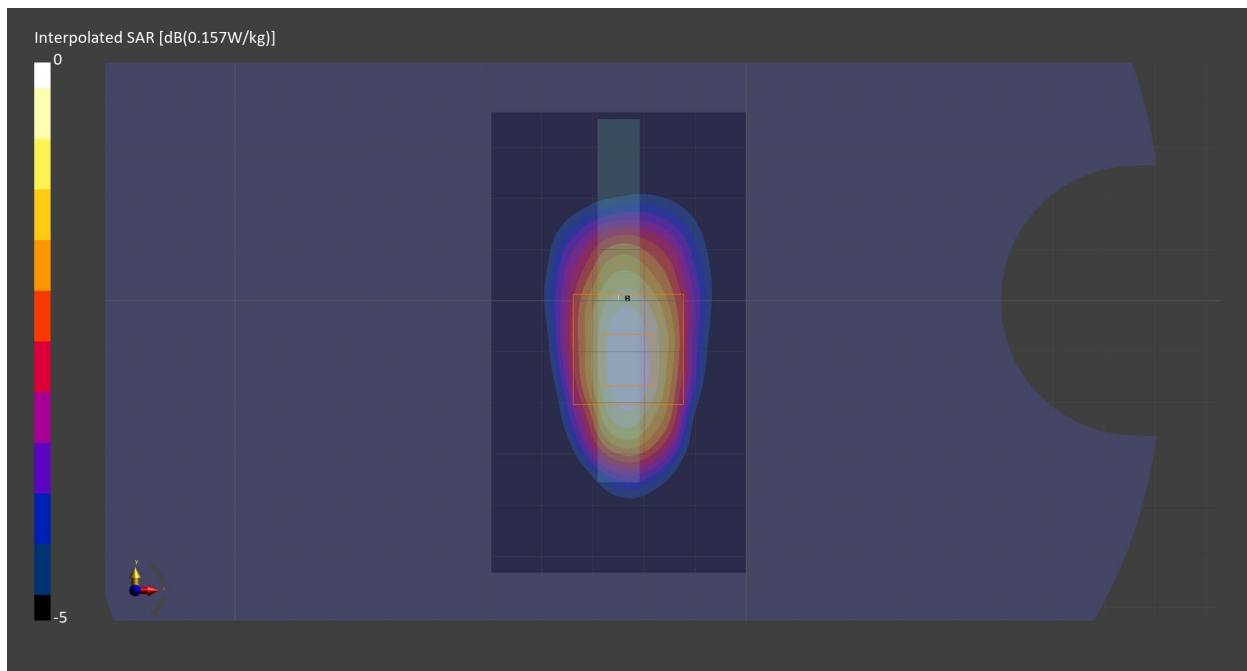
Probe Calibration Date	EX3DV4 - SN7711 2022-03-11	Phantom	Twin-SAM V8.0 (30deg probe tilt) - SN2084
DAE Calibration Date	DAE4 Sn1716 2022-03-08	TSL Meas. Date	HBBL600-10000V6 2023-Feb-20

Scans Setup

	Area Scan	Zoom Scan
Grid Extents [mm]	49.8 x 90.0	30.0 x 30.0 x 30.0
Grid Steps [mm]	8.3 x 15.0	6.0 x 6.0 x 1.5
Sensor Surface [mm]	3.0	1.4
Graded Grid	n/a	Yes
M2/M1 [%]		82.5
Dist 3dB Peak [mm]		10.9

Measurement Results

	Area Scan	Zoom Scan
psSAR1g [W/Kg]	0.128	0.131
psSAR10g [W/Kg]	0.072	0.073
Power Drift [dB]	-0.00	-0.02



Measurement Report for Band 12, CHEEK, Normal, CELL Main1

Exposure Conditions

Band	Band 12	TSL Permittivity	43.5
Frequency [MHz] Channel Number	707.5 23095	TSL Conductivity [S/m]	0.884
Group UID	LTE-FDD 10175-CAH	Phantom Section TSL	RightHead HSL
Conversion Factor	10.65	Test Distance [mm]	0.00
Communication Configuration	LTE-FDD (SC-FDMA, 1 RB, 10 MHz, QPSK) RBPosition:Low AntennaCfg:SISO		

Hardware Setup

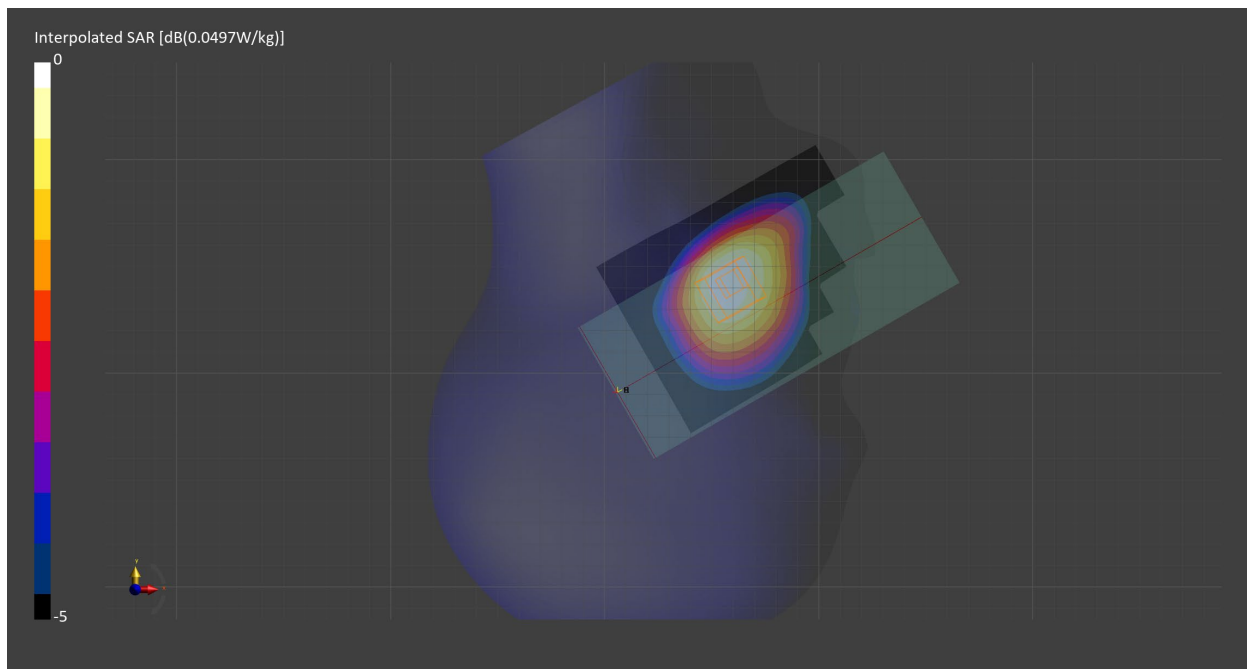
Probe Calibration Date	EX3DV4 - SN7710 2023-02-03	Phantom	Twin-SAM V8.0 (30deg probe tilt) - SN2082
DAE Calibration Date	DAE4 Sn1715 2023-01-23	TSL Meas. Date	HBBL600-10000V6 2023-Feb-20

Scans Setup

	Area Scan	Zoom Scan
Grid Extents [mm]	90.0 x 120.0	30.0 x 30.0 x 30.0
Grid Steps [mm]	15.0 x 15.0	6.0 x 6.0 x 1.5
Sensor Surface [mm]	3.0	1.4
Graded Grid	n/a	Yes
M2/M1 [%]		95.7
Dist 3dB Peak [mm]		22.1

Measurement Results

	Area Scan	Zoom Scan
psSAR1g [W/Kg]	0.043	0.045
psSAR10g [W/Kg]	0.030	0.035
Power Drift [dB]	-0.06	-0.01



Measurement Report for Band 12, FRONT, Normal, CELL Main1

Exposure Conditions

Band	Band 12	TSL Permittivity	43.5
Frequency [MHz] Channel Number	707.5 23095	TSL Conductivity [S/m]	0.884
Group UID	LTE-FDD 10175-CAH	Phantom Section TSL	Flat HSL
Conversion Factor	10.65	Test Distance [mm]	10.00
Communication Configuration	LTE-FDD (SC-FDMA, 1 RB, 10 MHz, QPSK) RBPosition:Low AntennaCfg:SISO		

Hardware Setup

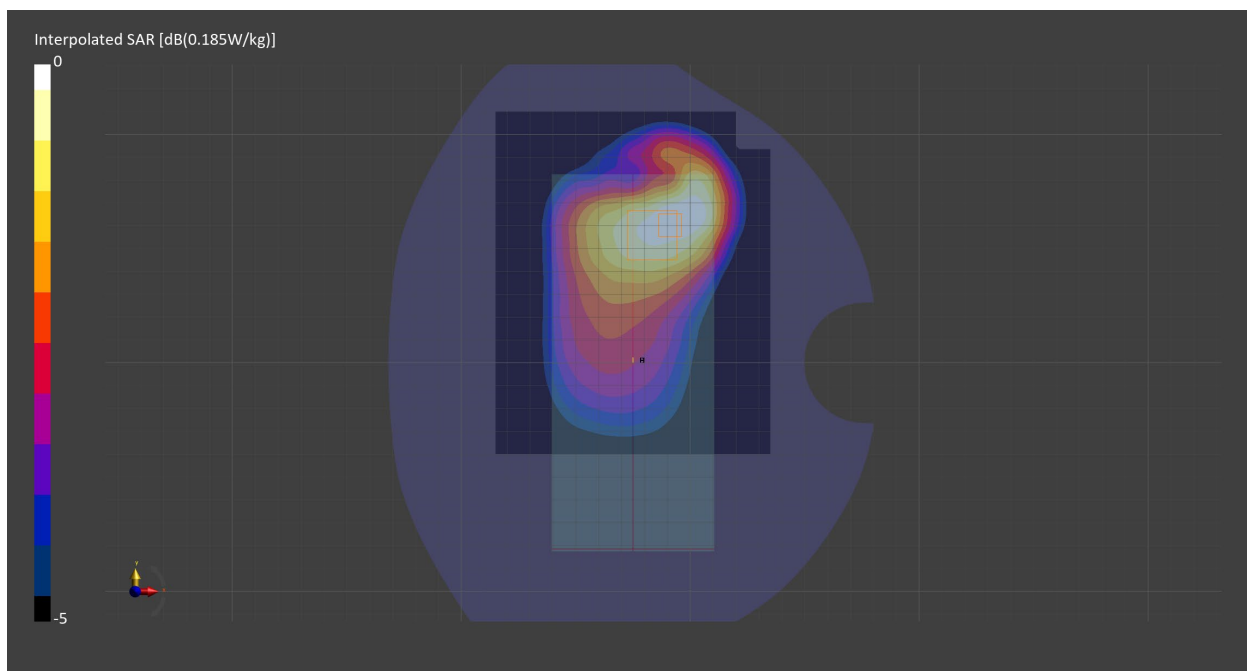
Probe Calibration Date	EX3DV4 - SN7710 2023-02-03	Phantom	Twin-SAM V8.0 (30deg probe tilt) - SN2082
DAE Calibration Date	DAE4 Sn1715 2023-01-23	TSL Meas. Date	HBBL600-10000V6 2023-Feb-20

Scans Setup

	Area Scan	Zoom Scan
Grid Extents [mm]	120.0 x 150.0	30.0 x 30.0 x 30.0
Grid Steps [mm]	15.0 x 15.0	6.0 x 6.0 x 1.5
Sensor Surface [mm]	3.0	1.4
Graded Grid	n/a	Yes
M2/M1 [%]		83.1
Dist 3dB Peak [mm]		17.5

Measurement Results

	Area Scan	Zoom Scan
psSAR1g [W/Kg]	0.114	0.114
psSAR10g [W/Kg]	0.079	0.078
Power Drift [dB]	-0.00	0.03



Measurement Report for WLAN 2.4GHz, CHEEK, Normal, WiFi Main

Exposure Conditions

Band	WLAN 2.4GHz	TSL Permittivity	41.2
Frequency [MHz] Channel Number	2412.0 1	TSL Conductivity [S/m]	1.79
Group UID	WLAN 10012-CAB	Phantom Section TSL	RightHead HSL
Conversion Factor	8.6	Test Distance [mm]	0.00
Communication Configuration	IEEE 802.11b WiFi 2.4 GHz (DSSS, 1 Mbps)		

Hardware Setup

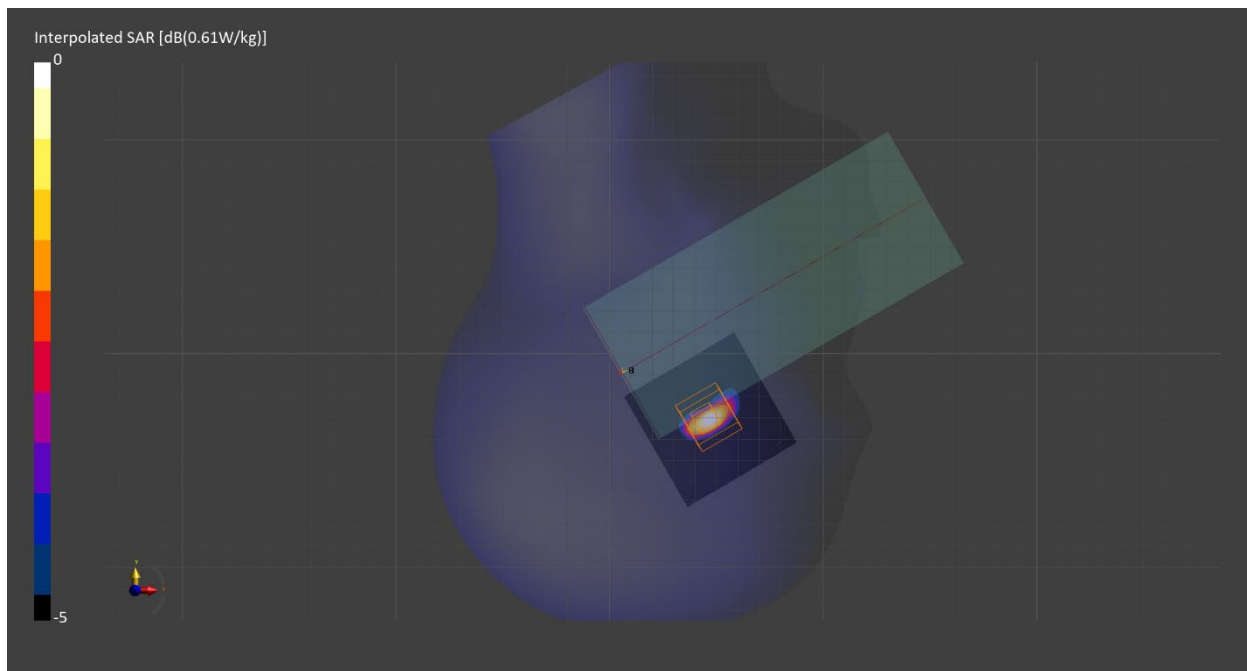
Probe Calibration Date	EX3DV4 - SN7709 2022-12-12	Phantom	Twin-SAM V8.0 (30deg probe tilt) - SN1742
DAE Calibration Date	DAE4 Sn1714 2022-11-23	TSL Meas. Date	HBBL-600-10000 2023-Feb-24

Scans Setup

	Area Scan	Zoom Scan
Grid Extents [mm]	60.0 x 60.0	30.0 x 30.0 x 30.0
Grid Steps [mm]	10.0 x 10.0	3.8 x 3.8 x 1.4
Sensor Surface [mm]	3.0	1.4
Graded Grid	n/a	Yes
M2/M1 [%]		76.0
Dist 3dB Peak [mm]		4.7

Measurement Results

	Area Scan	Zoom Scan
psSAR1g [W/Kg]	0.403	0.469
psSAR10g [W/Kg]	0.157	0.173
Power Drift [dB]	0.04	0.01



Measurement Report for WLAN 5GHz, EDGE LEFT, Normal, WiFi Main

Exposure Conditions

Band	WLAN 5GHz	TSL Permittivity	35.9
Frequency [MHz] Channel Number	5570.0 114	TSL Conductivity [S/m]	5.08
Group UID	WLAN 10554-AAD	Phantom Section TSL	Flat HSL
Conversion Factor	5.16	Test Distance [mm]	0.00
Communication Configuration	IEEE 802.11ac WiFi (160MHz, MCS0, 99pc duty cycle)		

Hardware Setup

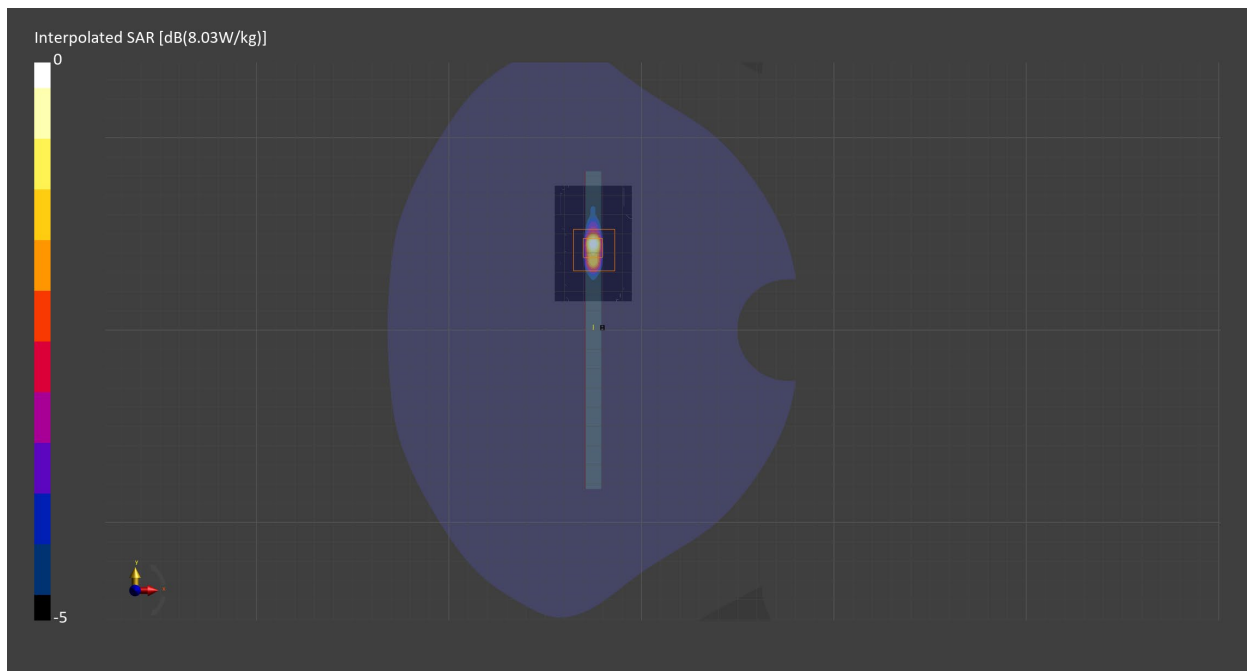
Probe Calibration Date	EX3DV4 - SN7711 2022-03-11	Phantom	Twin-SAM V8.0 (30deg probe tilt) - SN2084
DAE Calibration Date	DAE4 Sn1716 2022-03-08	TSL Meas. Date	HBBL600-10000V6 2023-Feb-24

Scans Setup

	Area Scan	Zoom Scan
Grid Extents [mm]	20.0 x 60.0	22.0 x 22.0 x 22.0
Grid Steps [mm]	10.0 x 10.0	2.6 x 2.6 x 1.2
Sensor Surface [mm]	3.0	1.4
Graded Grid	n/a	Yes
M2/M1 [%]		61.1
Dist 3dB Peak [mm]		4.2

Measurement Results

	Area Scan	Zoom Scan
psSAR1g [W/Kg]	1.33	1.38
psSAR10g [W/Kg]	0.324	0.307
Power Drift [dB]	-0.06	0.00



Measurement Report for Custom Band, BACK, Normal, CELL Main1

Exposure Conditions

Band	Custom Band	TSL Permittivity	57.6
Frequency [MHz] Channel Number	13.6 13600	TSL Conductivity [S/m]	0.735
Group UID	CW 0--	Phantom Section TSL	Flat HSL
Conversion Factor	15.8	Test Distance [mm]	0.00
Communication Configuration			CW

Hardware Setup

Probe Calibration Date	EX3DV4 - SN7710 2023-02-03	Phantom	ELI V8.0 (20deg probe tilt) - SN2081
DAE Calibration Date	DAE4 Sn1715 2023-01-23	TSL Meas. Date	HBBL4-250V3 2023-Mar-23

Scans Setup

	Area Scan	Zoom Scan
Grid Extents [mm]	60.0 x 60.0	30.0 x 30.0 x 30.0
Grid Steps [mm]	15.0 x 15.0	3.6 x 3.6 x 1.4
Sensor Surface [mm]	3.0	1.4
Graded Grid	n/a	Yes
M2/M1 [%]		51.8
Dist 3dB Peak [mm]		3.9

Measurement Results

	Area Scan	Zoom Scan
psSAR1g [W/Kg]	0.078	0.083
psSAR10g [W/Kg]	0.036	0.021
Power Drift [dB]	0.09	-0.06

