

# SONY

**Sony Mobile Communications, Inc.**

4-12-3 Higashi-shinagawa, Shinagawa-ku, Tokyo, 140-0002, Japan

Remarks

This document is managed in Infodoc.

Date: January 16, 2018

## Internal Photos

FCC: PY7-77587P

### 1. Remove Pad Front cover



## 2. Remove the Cabinet



# SONY

Sony Mobile Communications, Inc.

4-12-3 Higashi-shinagawa, Shinagawa-ku, Tokyo, 140-0002, Japan

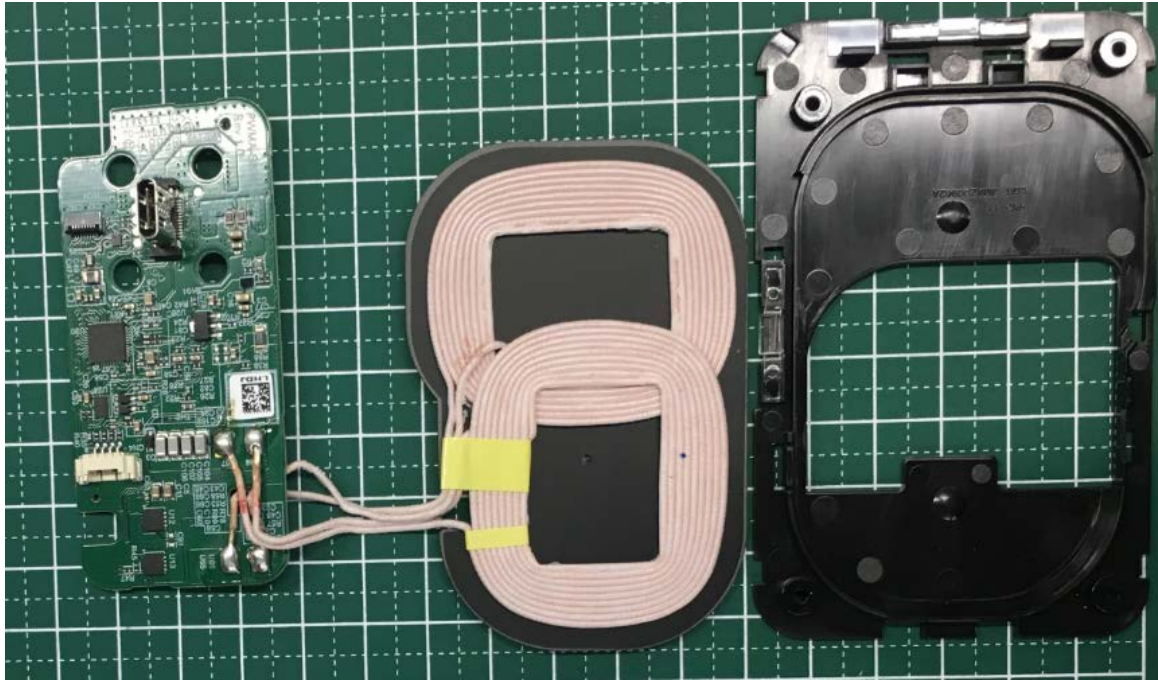
Remarks

This document is managed in Infodoc.

## 3. PCB and Chassis with Fan



## 4. PCB, Coil, and Cover Front



# SONY

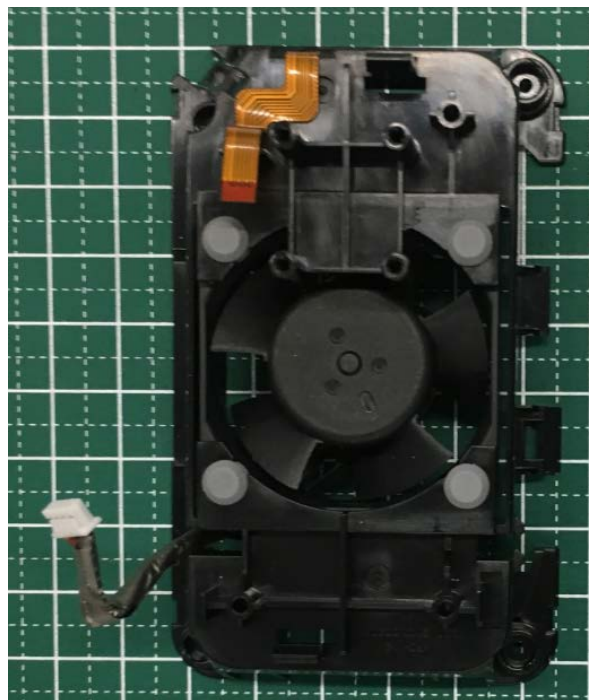
Sony Mobile Communications, Inc.

4-12-3 Higashi-shinagawa, Shinagawa-ku, Tokyo, 140-0002, Japan

Remarks

This document is managed in Infodoc.

## 5. Fan with Chassis



# SONY

**Sony Mobile Communications, Inc.**

4-12-3 Higashi-shinagawa, Shinagawa-ku, Tokyo, 140-0002, Japan

---

Remarks

This document is managed in Infodoc.

