

Measurement Report for GSM 850, CHEEK, Normal, CELL Main1

Exposure Conditions

Band	GSM 850	TSL Permittivity	41.6
Frequency [MHz] Channel Number	836.600 190	TSL Conductivity [S/m]	0.906
Group UID	GSM 10028-DAC	Phantom Section TSL	LeftHead HSL
Conversion Factor	9.15	Test Distance [mm]	0.00
Communication Configuration	GPRS-FDD (TDMA, GMSK, TN 0-1-2-3)		

Hardware Setup

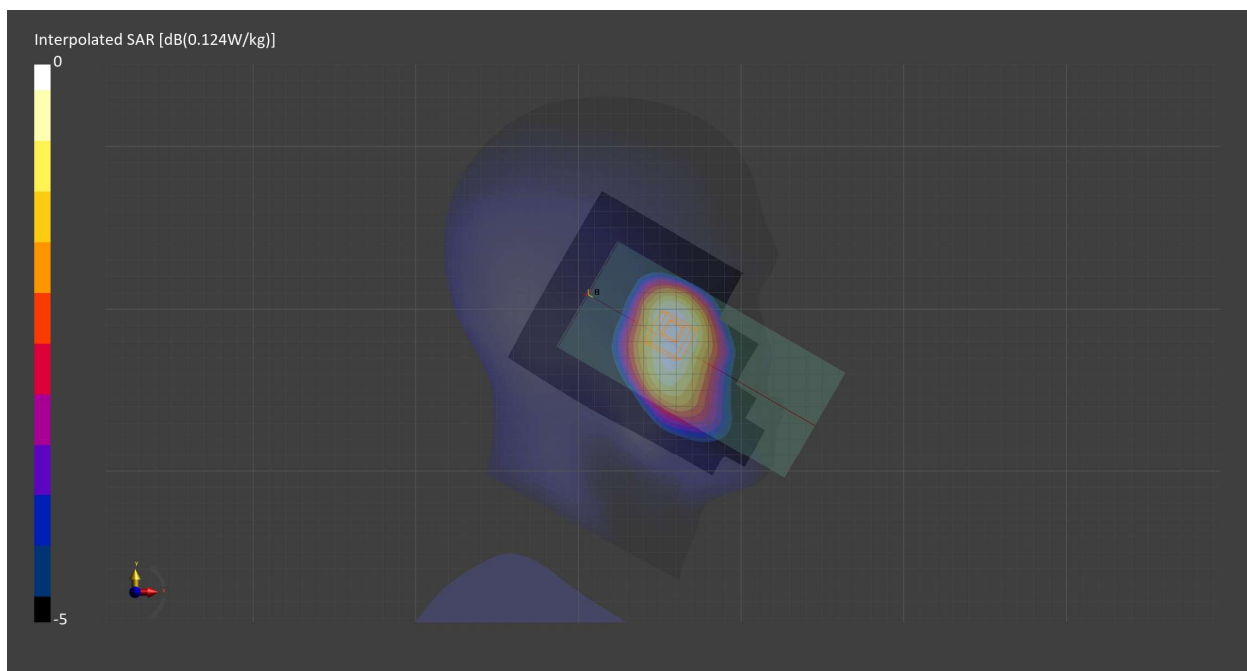
Probe Calibration Date	EX3DV4 - SN7709 2023-11-30	Phantom	Twin-SAM V8.0 (30deg probe tilt) - SN1742
DAE Calibration Date	DAE4 Sn1714 2023-11-22	TSL Meas. Date	HBBL-600-10000 2024-Feb-19

Scans Setup

	Area Scan	Zoom Scan
Grid Extents [mm]	120.0 x 210.0	30.0 x 30.0 x 30.0
Grid Steps [mm]	15.0 x 15.0	6.0 x 6.0 x 1.5
Sensor Surface [mm]	3.0	1.4
Graded Grid	N/A	Yes
M2/M1 [%]		94.7
Dist 3dB Peak [mm]		> 15.0

Measurement Results

	Area Scan	Zoom Scan
psSAR1g [W/Kg]	0.104	0.112
psSAR10g [W/Kg]	0.073	0.090
Power Drift [dB]	N/A	0.00



Measurement Report for GSM 850, BACK, Normal, CELL Main1

Exposure Conditions

Band	GSM 850	TSL Permittivity	41.6
Frequency [MHz] Channel Number	836.600 190	TSL Conductivity [S/m]	0.906
Group UID	GSM 10028-DAC	Phantom Section TSL	Flat HSL
Conversion Factor	9.15	Test Distance [mm]	10.00
Communication Configuration	GPRS-FDD (TDMA, GMSK, TN 0-1-2-3)		

Hardware Setup

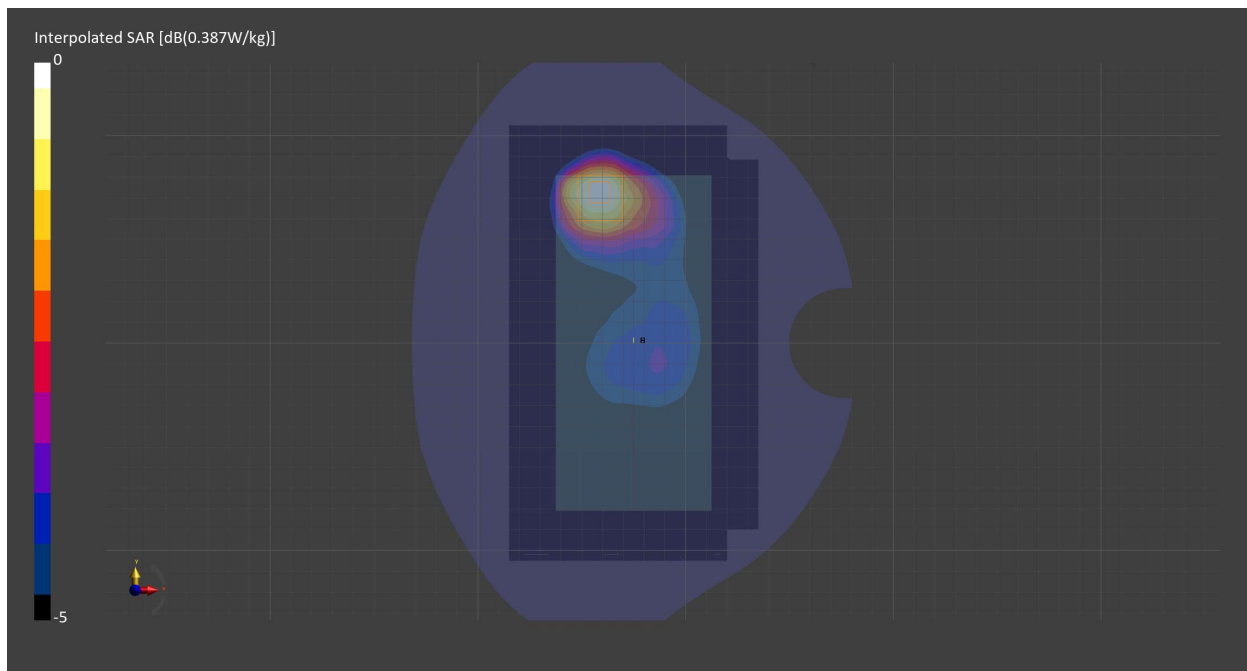
Probe Calibration Date	EX3DV4 - SN7709 2023-11-30	Phantom	Twin-SAM V8.0 (30deg probe tilt) - SN1742
DAE Calibration Date	DAE4 Sn1714 2023-11-22	TSL Meas. Date	HBBL-600-10000 2024-Feb-19

Scans Setup

	Area Scan	Zoom Scan
Grid Extents [mm]	120.0 x 210.0	30.0 x 30.0 x 30.0
Grid Steps [mm]	15.0 x 15.0	6.0 x 6.0 x 1.5
Sensor Surface [mm]	3.0	1.4
Graded Grid	N/A	Yes
M2/M1 [%]		88.5
Dist 3dB Peak [mm]		15.6

Measurement Results

	Area Scan	Zoom Scan
psSAR1g [W/Kg]	0.263	0.249
psSAR10g [W/Kg]	0.170	0.155
Power Drift [dB]	N/A	-0.12



Measurement Report for GSM 850, BACK, Normal, CELL Main1

Exposure Conditions

Band	GSM 850	TSL Permittivity	41.6
Frequency [MHz] Channel Number	836.600 190	TSL Conductivity [S/m]	0.906
Group UID	GSM 10024-DAC	Phantom Section TSL	Flat HSL
Conversion Factor	9.15	Test Distance [mm]	10.00
Communication Configuration	GPRS-FDD (TDMA, GMSK, TN 0-1)		

Hardware Setup

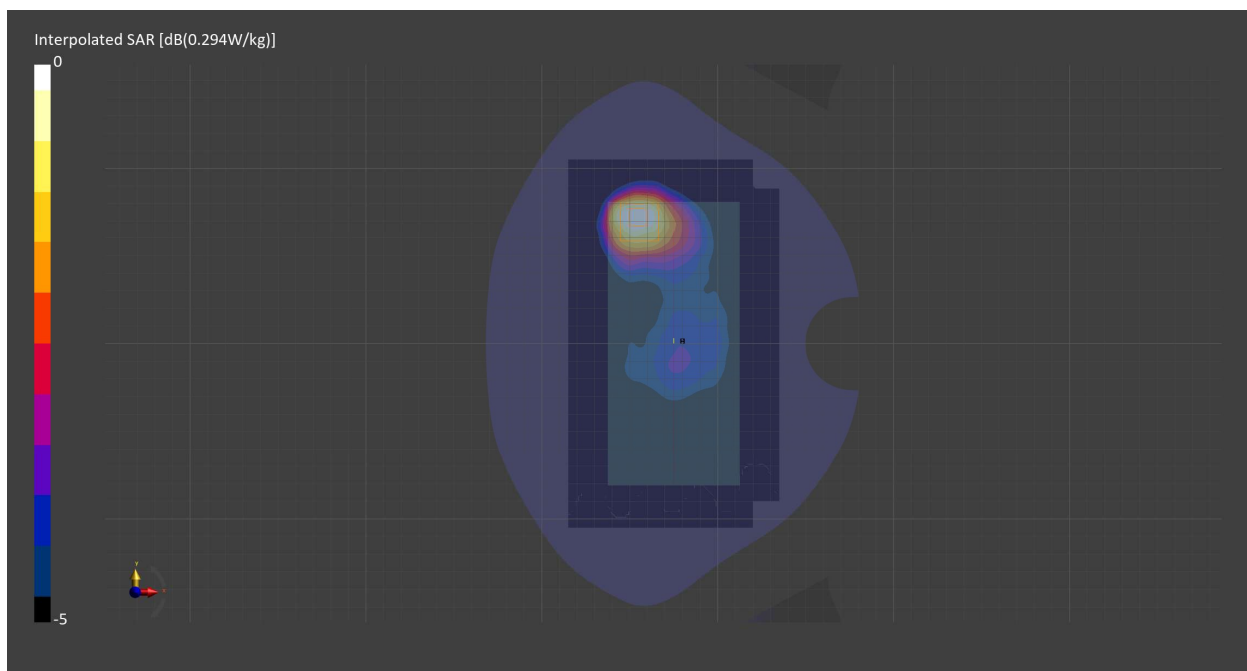
Probe Calibration Date	EX3DV4 - SN7709 2023-11-30	Phantom	Twin-SAM V8.0 (30deg probe tilt) - SN1742
DAE Calibration Date	DAE4 Sn1714 2023-11-22	TSL Meas. Date	HBBL-600-10000 2024-Feb-19

Scans Setup

	Area Scan	Zoom Scan
Grid Extents [mm]	120.0 x 210.0	30.0 x 30.0 x 30.0
Grid Steps [mm]	15.0 x 15.0	6.0 x 6.0 x 1.5
Sensor Surface [mm]	3.0	1.4
Graded Grid	N/A	Yes
M2/M1 [%]		88.1
Dist 3dB Peak [mm]		14.4

Measurement Results

	Area Scan	Zoom Scan
psSAR1g [W/Kg]	0.258	0.249
psSAR10g [W/Kg]	0.168	0.154
Power Drift [dB]	N/A	-0.02



Measurement Report for PCS 1900, CHEEK, Normal, CELL Main2

Exposure Conditions

Band	PCS 1900	TSL Permittivity	39.6
Frequency [MHz] Channel Number	1880.000 661	TSL Conductivity [S/m]	1.43
Group UID	GSM 10028-DAC	Phantom Section TSL	RightHead HSL
Conversion Factor	8.08	Test Distance [mm]	0.00
Communication Configuration	GPRS-FDD (TDMA, GMSK, TN 0-1-2-3)		

Hardware Setup

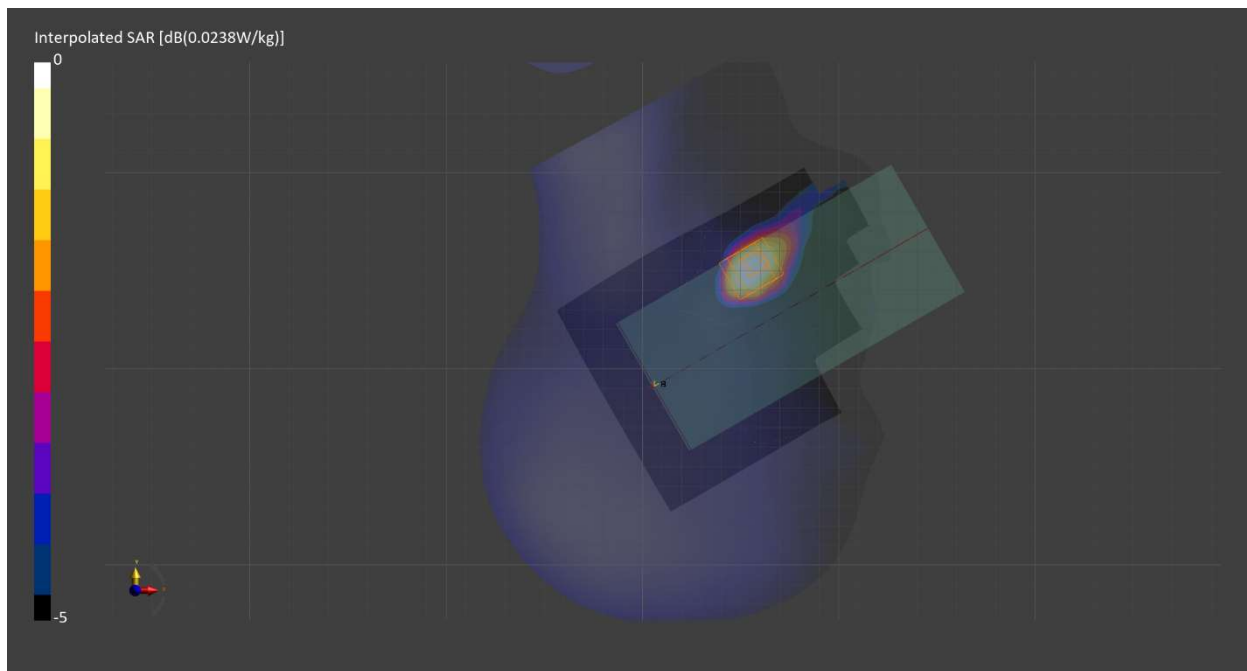
Probe Calibration Date	EX3DV4 - SN7709 2023-11-30	Phantom	Twin-SAM V8.0 (30deg probe tilt) - SN1742
DAE Calibration Date	DAE4 Sn1714 2023-11-22	TSL Meas. Date	HBBL-600-10000 2024-Feb-19

Scans Setup

	Area Scan	Zoom Scan
Grid Extents [mm]	120.0 x 210.0	30.0 x 30.0 x 30.0
Grid Steps [mm]	15.0 x 15.0	6.0 x 6.0 x 1.5
Sensor Surface [mm]	3.0	1.4
Graded Grid	N/A	Yes
M2/M1 [%]		96.6
Dist 3dB Peak [mm]		12.0

Measurement Results

	Area Scan	Zoom Scan
psSAR1g [W/Kg]	0.016	0.016
psSAR10g [W/Kg]	0.009	0.009
Power Drift [dB]	N/A	-0.11



Measurement Report for PCS 1900, BACK, Normal, CELL Main2

Exposure Conditions

Band	PCS 1900	TSL Permittivity	39.6
Frequency [MHz] Channel Number	1880.000 661	TSL Conductivity [S/m]	1.43
Group UID	GSM 10028-DAC	Phantom Section TSL	Flat HSL
Conversion Factor	8.08	Test Distance [mm]	10.00
Communication Configuration	GPRS-FDD (TDMA, GMSK, TN 0-1-2-3)		

Hardware Setup

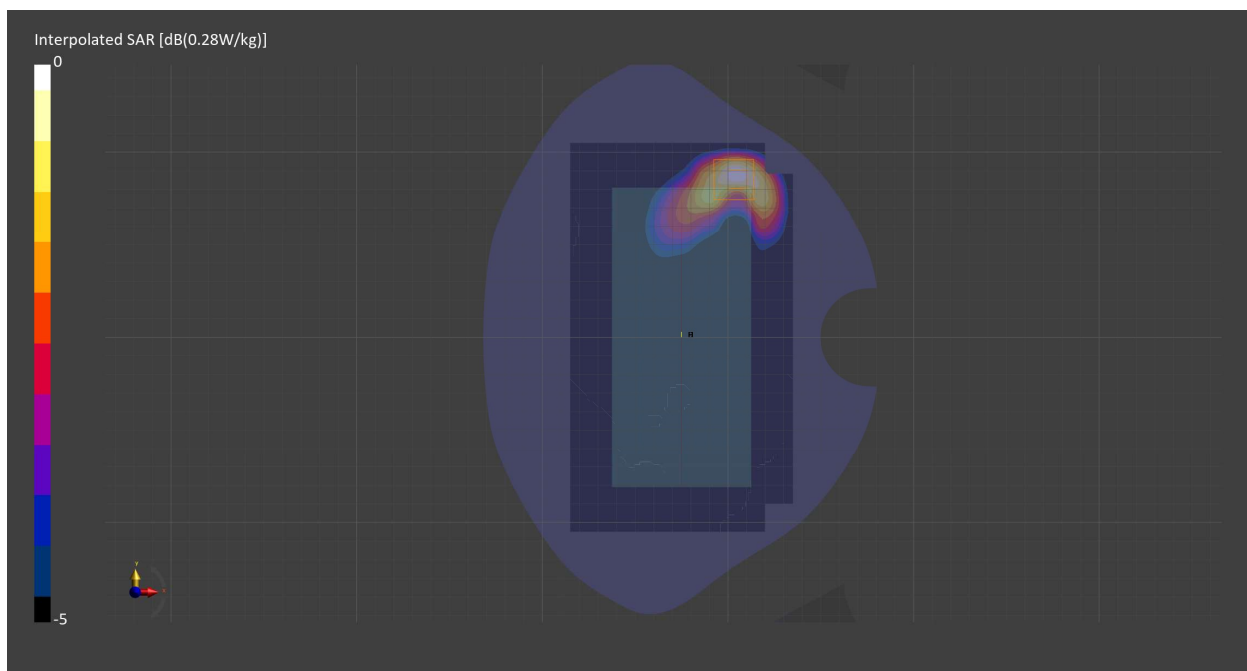
Probe Calibration Date	EX3DV4 - SN7709 2023-11-30	Phantom	Twin-SAM V8.0 (30deg probe tilt) - SN1742
DAE Calibration Date	DAE4 Sn1714 2023-11-22	TSL Meas. Date	HBBL-600-10000 2024-Feb-19

Scans Setup

	Area Scan	Zoom Scan
Grid Extents [mm]	120.0 x 210.0	30.0 x 30.0 x 30.0
Grid Steps [mm]	15.0 x 15.0	6.0 x 6.0 x 1.5
Sensor Surface [mm]	3.0	1.4
Graded Grid	N/A	Yes
M2/M1 [%]		83.3
Dist 3dB Peak [mm]		9.6

Measurement Results

	Area Scan	Zoom Scan
psSAR1g [W/Kg]	0.141	0.161
psSAR10g [W/Kg]	0.080	0.087
Power Drift [dB]	N/A	-0.05



Measurement Report for PCS 1900, EDGE BOTTOM, Normal, CELL Main2

Exposure Conditions

Band	PCS 1900	TSL Permittivity	39.6
Frequency [MHz] Channel Number	1880.000 661	TSL Conductivity [S/m]	1.43
Group UID	GSM 10028-DAC	Phantom Section TSL	Flat HSL
Conversion Factor	8.08	Test Distance [mm]	10.00
Communication Configuration	GPRS-FDD (TDMA, GMSK, TN 0-1-2-3)		

Hardware Setup

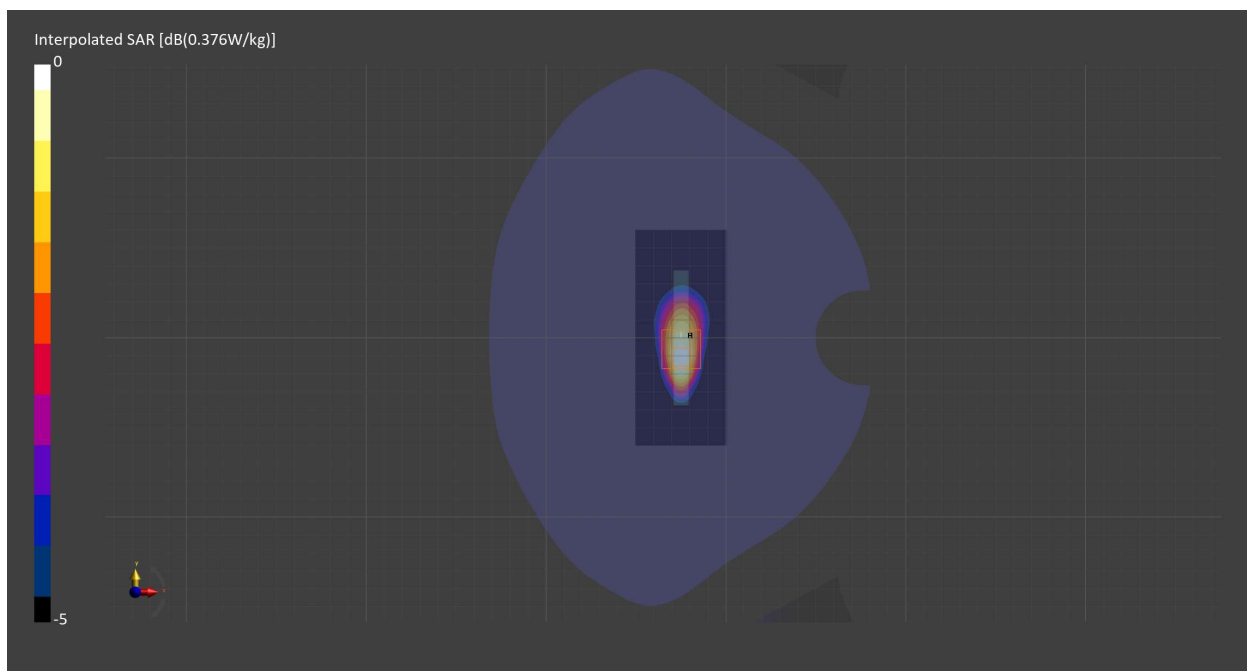
Probe Calibration Date	EX3DV4 - SN7709 2023-11-30	Phantom	Twin-SAM V8.0 (30deg probe tilt) - SN1742
DAE Calibration Date	DAE4 Sn1714 2023-11-22	TSL Meas. Date	HBBL-600-10000 2024-Feb-19

Scans Setup

	Area Scan	Zoom Scan
Grid Extents [mm]	51.0 x 120.0	30.0 x 30.0 x 30.0
Grid Steps [mm]	8.5 x 15.0	6.0 x 6.0 x 1.5
Sensor Surface [mm]	3.0	1.4
Graded Grid	N/A	Yes
M2/M1 [%]		81.8
Dist 3dB Peak [mm]		9.7

Measurement Results

	Area Scan	Zoom Scan
psSAR1g [W/Kg]	0.214	0.212
psSAR10g [W/Kg]	0.115	0.116
Power Drift [dB]	N/A	-0.09



Measurement Report for PCS 1900, EDGE BOTTOM, Normal, CELL Main2

Exposure Conditions

Band	PCS 1900	TSL Permittivity	39.6
Frequency [MHz] Channel Number	1880.000 661	TSL Conductivity [S/m]	1.43
Group UID	GSM 10024-DAC	Phantom Section TSL	Flat HSL
Conversion Factor	8.08	Test Distance [mm]	10.00
Communication Configuration	GPRS-FDD (TDMA, GMSK, TN 0-1)		

Hardware Setup

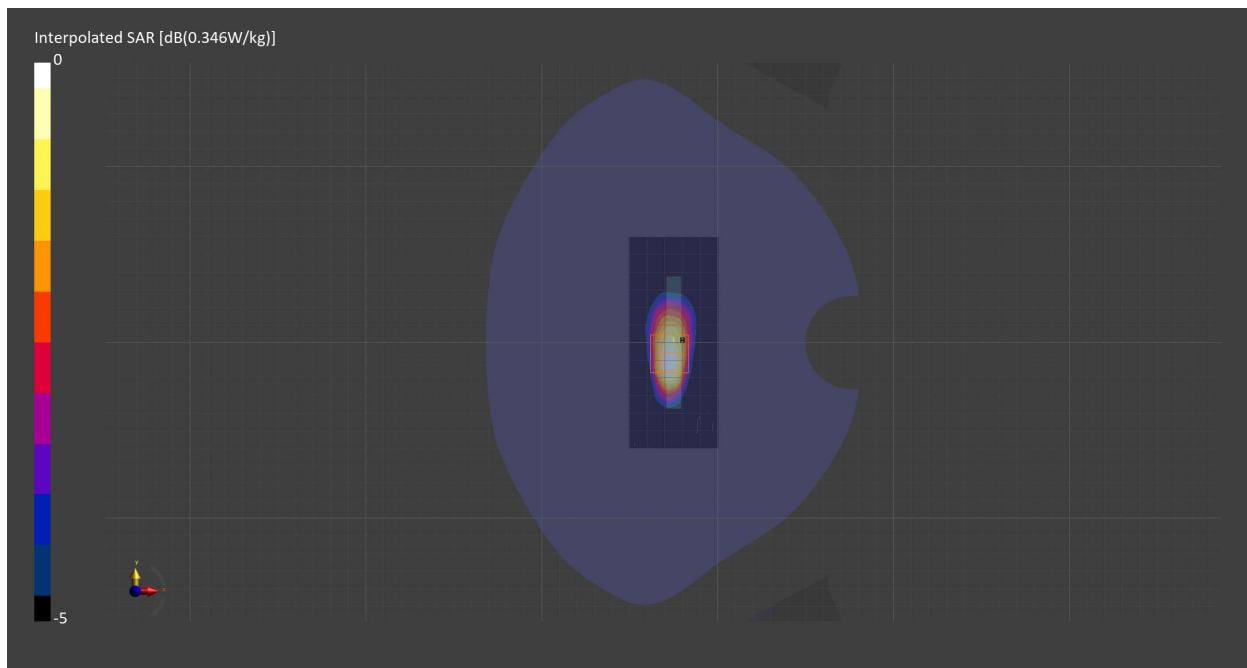
Probe Calibration Date	EX3DV4 - SN7709 2023-11-30	Phantom	Twin-SAM V8.0 (30deg probe tilt) - SN1742
DAE Calibration Date	DAE4 Sn1714 2023-11-22	TSL Meas. Date	HBBL-600-10000 2024-Feb-19

Scans Setup

	Area Scan	Zoom Scan
Grid Extents [mm]	51.0 x 120.0	30.0 x 30.0 x 30.0
Grid Steps [mm]	8.5 x 15.0	6.0 x 6.0 x 1.5
Sensor Surface [mm]	3.0	1.4
Graded Grid	N/A	Yes
M2/M1 [%]		85.3
Dist 3dB Peak [mm]		9.6

Measurement Results

	Area Scan	Zoom Scan
psSAR1g [W/Kg]	0.188	0.195
psSAR10g [W/Kg]	0.102	0.105
Power Drift [dB]	N/A	0.02



Measurement Report for Band 2, CHEEK, Normal, CELL Main2

Exposure Conditions

Band	Band 2	TSL Permittivity	41.1
Frequency [MHz] Channel Number	1852.400 9262	TSL Conductivity [S/m]	1.41
Group UID	WCDMA 10011-CAC	Phantom Section TSL	RightHead HSL
Conversion Factor	8.08	Test Distance [mm]	0.00
Communication Configuration	UMTS-FDD (WCDMA)		

Hardware Setup

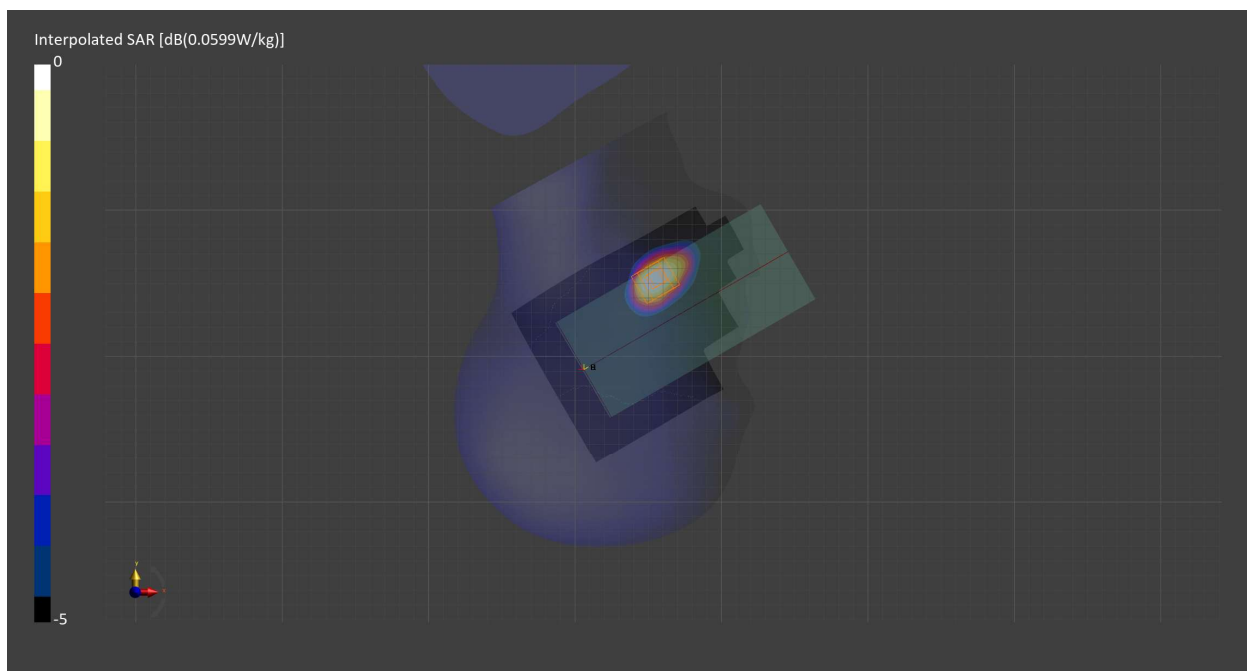
Probe Calibration Date	EX3DV4 - SN7709 2023-11-30	Phantom	Twin-SAM V8.0 (30deg probe tilt) - SN1742
DAE Calibration Date	DAE4 Sn1714 2023-11-22	TSL Meas. Date	HSL900 2024-Mar-26

Scans Setup

	Area Scan	Zoom Scan
Grid Extents [mm]	120.0 x 210.0	30.0 x 30.0 x 30.0
Grid Steps [mm]	15.0 x 15.0	6.0 x 6.0 x 1.5
Sensor Surface [mm]	3.0	1.4
Graded Grid	N/A	Yes
M2/M1 [%]		90.8
Dist 3dB Peak [mm]		13.4

Measurement Results

	Area Scan	Zoom Scan
psSAR1g [W/Kg]	0.049	0.052
psSAR10g [W/Kg]	0.028	0.032
Power Drift [dB]	-0.05	0.03



Measurement Report for Band 2, BACK, Normal, CELL Main2

Exposure Conditions

Band	Band 2	TSL Permittivity	41.1
Frequency [MHz] Channel Number	1852.400 9262	TSL Conductivity [S/m]	1.41
Group UID	WCDMA 10011-CAC	Phantom Section TSL	Flat HSL
Conversion Factor	8.08	Test Distance [mm]	10.00
Communication Configuration	UMTS-FDD (WCDMA)		

Hardware Setup

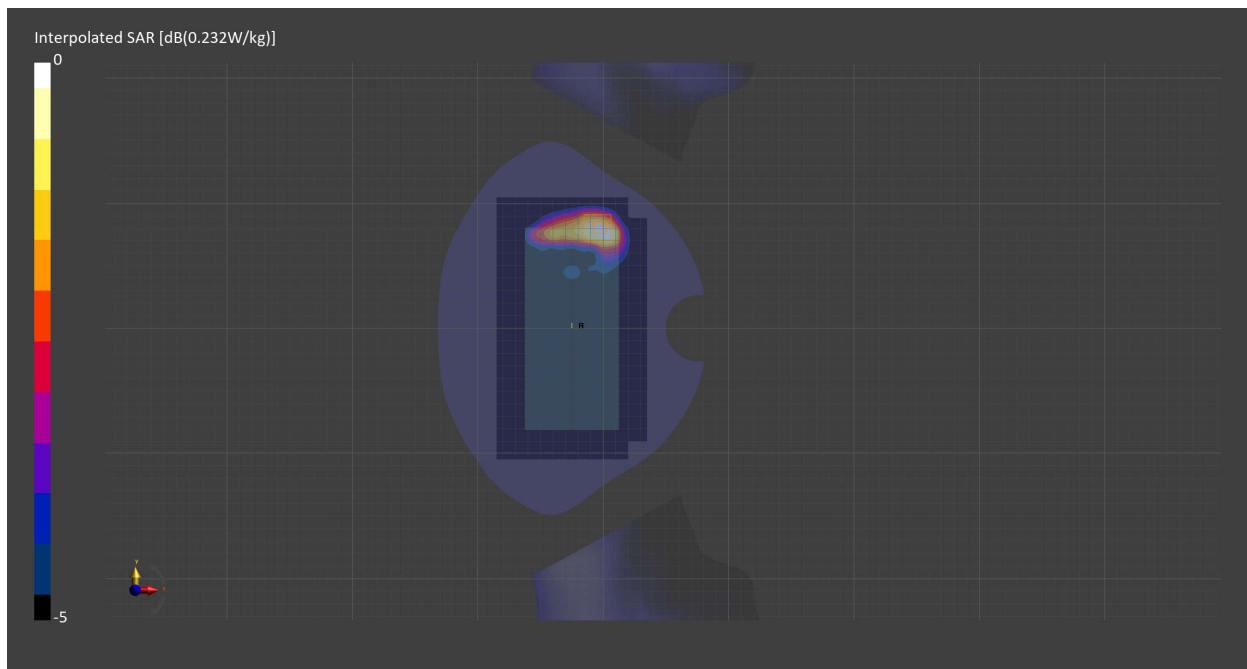
Probe Calibration Date	EX3DV4 - SN7709 2023-11-30	Phantom	Twin-SAM V8.0 (30deg probe tilt) - SN1742
DAE Calibration Date	DAE4 Sn1714 2023-11-22	TSL Meas. Date	HSL900 2024-Mar-26

Scans Setup

	Area Scan	Zoom Scan
Grid Extents [mm]	120.0 x 210.0	30.0 x 30.0 x 30.0
Grid Steps [mm]	15.0 x 15.0	6.0 x 6.0 x 1.5
Sensor Surface [mm]	3.0	1.4
Graded Grid	N/A	Yes
M2/M1 [%]		84.1
Dist 3dB Peak [mm]		10.9

Measurement Results

	Area Scan	Zoom Scan
psSAR1g [W/Kg]	0.190	0.215
psSAR10g [W/Kg]	0.109	0.118
Power Drift [dB]	-0.00	0.00



Measurement Report for Band 2, EDGE BOTTOM, Normal, CELL Main2

Exposure Conditions

Band	Band 2	TSL Permittivity	41.1
Frequency [MHz] Channel Number	1852.400 9262	TSL Conductivity [S/m]	1.41
Group UID	WCDMA 10011-CAC	Phantom Section TSL	Flat HSL
Conversion Factor	8.08	Test Distance [mm]	10.00
Communication Configuration	UMTS-FDD (WCDMA)		

Hardware Setup

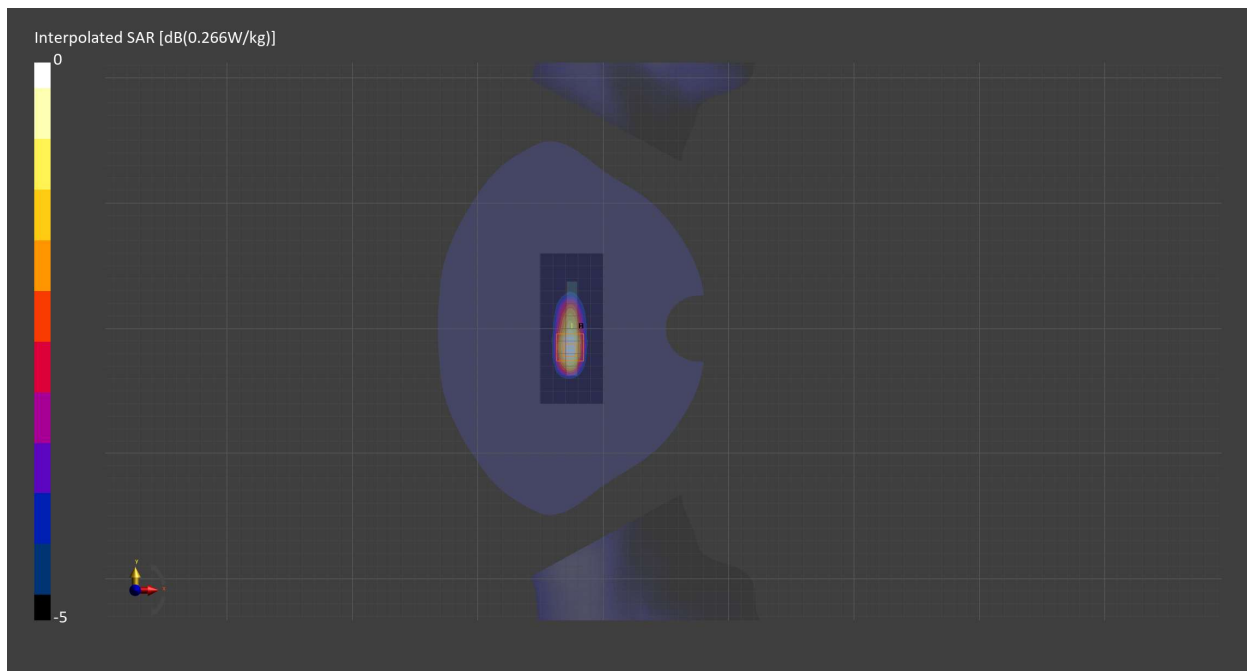
Probe Calibration Date	EX3DV4 - SN7709 2023-11-30	Phantom	Twin-SAM V8.0 (30deg probe tilt) - SN1742
DAE Calibration Date	DAE4 Sn1714 2023-11-22	TSL Meas. Date	HSL900 2024-Mar-26

Scans Setup

	Area Scan	Zoom Scan
Grid Extents [mm]	51.0 x 120.0	30.0 x 30.0 x 30.0
Grid Steps [mm]	8.5 x 15.0	6.0 x 6.0 x 1.5
Sensor Surface [mm]	3.0	1.4
Graded Grid	N/A	Yes
M2/M1 [%]		83.5
Dist 3dB Peak [mm]		10.8

Measurement Results

	Area Scan	Zoom Scan
psSAR1g [W/Kg]	0.213	0.222
psSAR10g [W/Kg]	0.115	0.121
Power Drift [dB]	0.01	0.00



Measurement Report for Band 4, CHEEK, Normal, CELL Main2

Exposure Conditions

Band	Band 4	TSL Permittivity	41.1
Frequency [MHz] Channel Number	1732.500 1762	TSL Conductivity [S/m]	1.38
Group UID	WCDMA 10011-CAC	Phantom Section TSL	RightHead HSL
Conversion Factor	8.95	Test Distance [mm]	0.00
Communication Configuration	UMTS-FDD (WCDMA)		

Hardware Setup

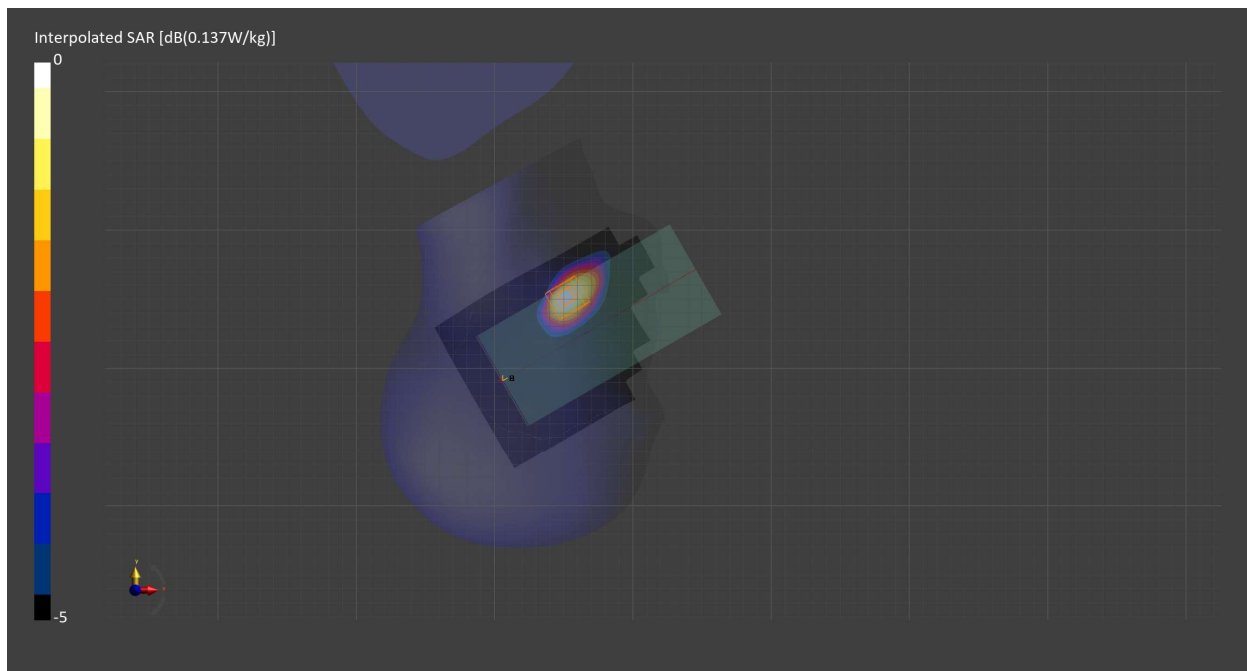
Probe Calibration Date	EX3DV4 - SN7710 2024-01-16	Phantom	Twin-SAM V8.0 (30deg probe tilt) - SN2082
DAE Calibration Date	DAE4 Sn1715 2024-02-12	TSL Meas. Date	HBBL600-10000V6 2024-Mar-25

Scans Setup

	Area Scan	Zoom Scan
Grid Extents [mm]	120.0 x 210.0	30.0 x 30.0 x 30.0
Grid Steps [mm]	15.0 x 15.0	6.0 x 6.0 x 1.5
Sensor Surface [mm]	3.0	1.4
Graded Grid	N/A	Yes
M2/M1 [%]		91.9
Dist 3dB Peak [mm]		11.1

Measurement Results

	Area Scan	Zoom Scan
psSAR1g [W/Kg]	0.113	0.116
psSAR10g [W/Kg]	0.065	0.075
Power Drift [dB]	0.02	0.02



Measurement Report for Band 4, BACK, Normal, CELL Main2

Exposure Conditions

Band	Band 4	TSL Permittivity	41.1
Frequency [MHz] Channel Number	1732.500 1762	TSL Conductivity [S/m]	1.38
Group UID	WCDMA 10011-CAC	Phantom Section TSL	Flat HSL
Conversion Factor	8.95	Test Distance [mm]	10.00
Communication Configuration	UMTS-FDD (WCDMA)		

Hardware Setup

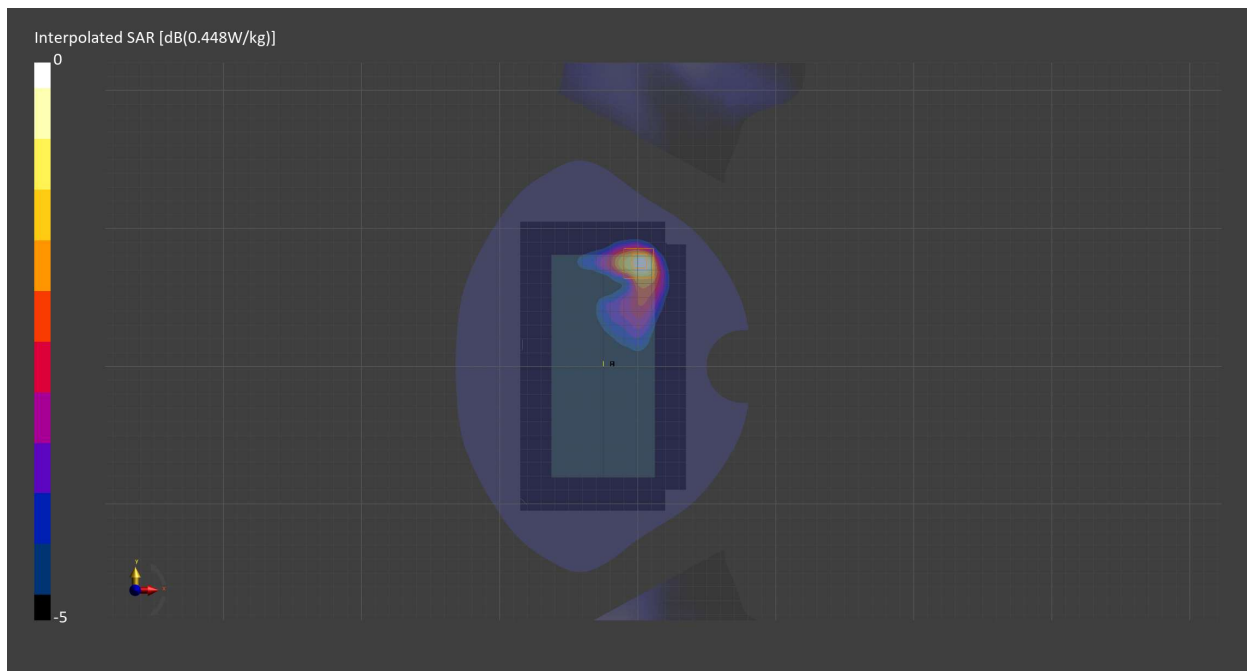
Probe Calibration Date	EX3DV4 - SN7710 2024-01-16	Phantom	Twin-SAM V8.0 (30deg probe tilt) - SN2082
DAE Calibration Date	DAE4 Sn1715 2024-02-12	TSL Meas. Date	HBBL600-10000V6 2024-Mar-25

Scans Setup

	Area Scan	Zoom Scan
Grid Extents [mm]	120.0 x 210.0	30.0 x 30.0 x 30.0
Grid Steps [mm]	15.0 x 15.0	6.0 x 6.0 x 1.5
Sensor Surface [mm]	3.0	1.4
Graded Grid	N/A	Yes
M2/M1 [%]		83.1
Dist 3dB Peak [mm]		10.8

Measurement Results

	Area Scan	Zoom Scan
psSAR1g [W/Kg]	0.361	0.362
psSAR10g [W/Kg]	0.198	0.199
Power Drift [dB]	0.01	-0.03



Measurement Report for Band 5, CHEEK, Normal, CELL Main1

Exposure Conditions

Band	Band 5	TSL Permittivity	41.6
Frequency [MHz] Channel Number	836.600 4183	TSL Conductivity [S/m]	0.906
Group UID	WCDMA 10011-CAC	Phantom Section TSL	LeftHead HSL
Conversion Factor	9.15	Test Distance [mm]	0.00
Communication Configuration	UMTS-FDD (WCDMA)		

Hardware Setup

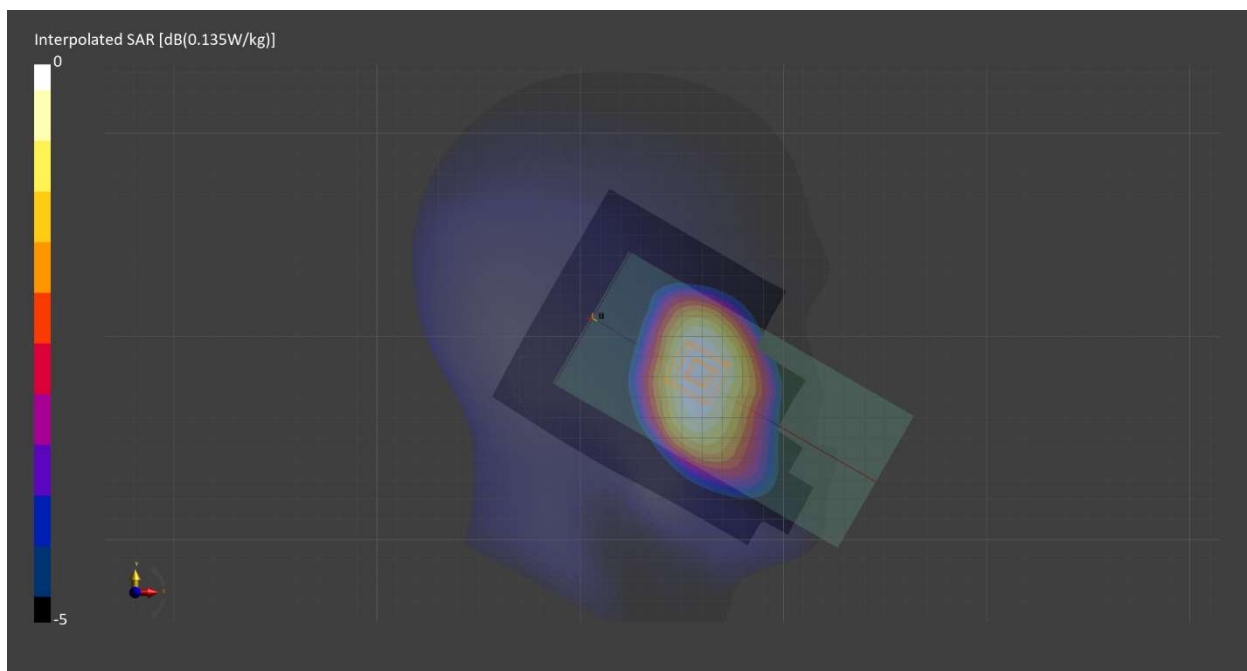
Probe Calibration Date	EX3DV4 - SN7709 2023-11-30	Phantom	Twin-SAM V8.0 (30deg probe tilt) - SN1742
DAE Calibration Date	DAE4 Sn1714 2023-11-22	TSL Meas. Date	HBBL-600-10000 2024-Feb-19

Scans Setup

	Area Scan	Zoom Scan
Grid Extents [mm]	120.0 x 210.0	30.0 x 30.0 x 30.0
Grid Steps [mm]	15.0 x 15.0	6.0 x 6.0 x 1.5
Sensor Surface [mm]	3.0	1.4
Graded Grid	N/A	Yes
M2/M1 [%]		99.5
Dist 3dB Peak [mm]		> 15.0

Measurement Results

	Area Scan	Zoom Scan
psSAR1g [W/Kg]	0.111	0.121
psSAR10g [W/Kg]	0.078	0.097
Power Drift [dB]	N/A	-0.03



Measurement Report for Band 5, BACK, Normal, CELL Main1

Exposure Conditions

Band	Band 5	TSL Permittivity	41.6
Frequency [MHz] Channel Number	836.600 4183	TSL Conductivity [S/m]	0.906
Group UID	WCDMA 10011-CAC	Phantom Section TSL	Flat HSL
Conversion Factor	9.15	Test Distance [mm]	10.00
Communication Configuration	UMTS-FDD (WCDMA)		

Hardware Setup

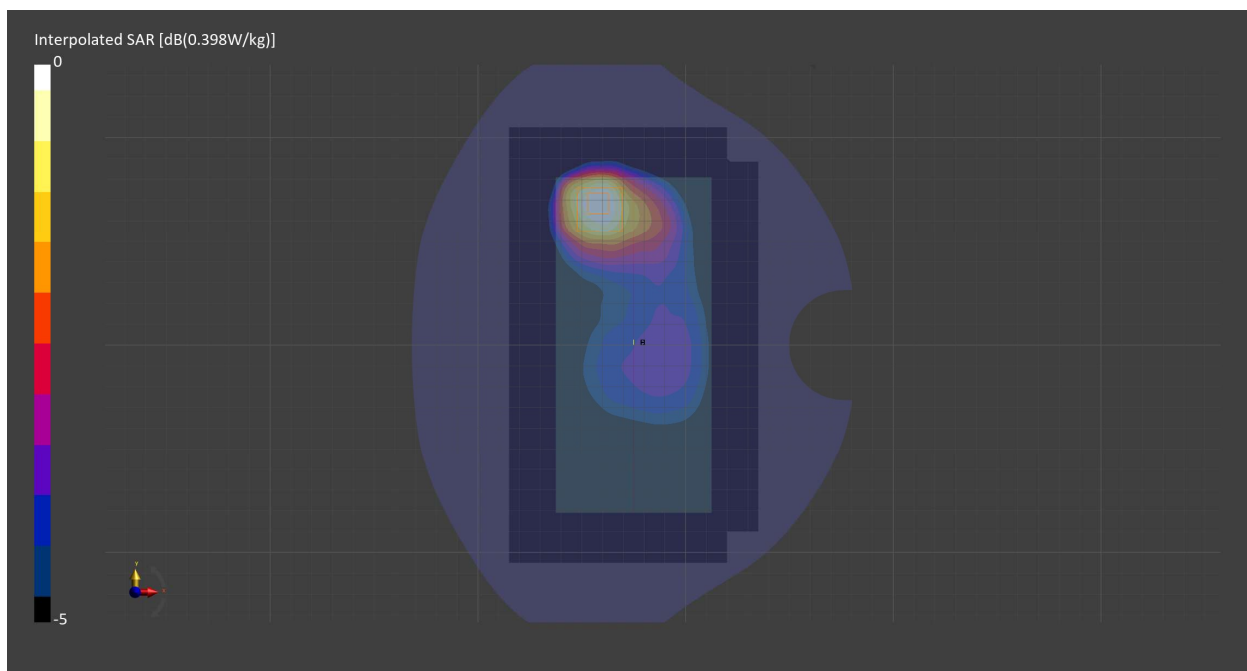
Probe Calibration Date	EX3DV4 - SN7709 2023-11-30	Phantom	Twin-SAM V8.0 (30deg probe tilt) - SN1742
DAE Calibration Date	DAE4 Sn1714 2023-11-22	TSL Meas. Date	HBBL-600-10000 2024-Feb-19

Scans Setup

	Area Scan	Zoom Scan
Grid Extents [mm]	120.0 x 210.0	30.0 x 30.0 x 30.0
Grid Steps [mm]	15.0 x 15.0	6.0 x 6.0 x 1.5
Sensor Surface [mm]	3.0	1.4
Graded Grid	N/A	Yes
M2/M1 [%]		88.6
Dist 3dB Peak [mm]		15.6

Measurement Results

	Area Scan	Zoom Scan
psSAR1g [W/Kg]	0.258	0.255
psSAR10g [W/Kg]	0.169	0.158
Power Drift [dB]	N/A	-0.03



Measurement Report for Band 2, TILT, Normal, CELL Main2

Exposure Conditions

Band	Band 2	TSL Permittivity	41.1
Frequency [MHz] Channel Number	1880.000 18900	TSL Conductivity [S/m]	1.43
Group UID	LTE-FDD 10297-AAE	Phantom Section TSL	LeftHead HSL
Conversion Factor	8.08	Test Distance [mm]	0.00
Communication Configuration	LTE-FDD (SC-FDMA, 50% RB, 20 MHz, QPSK) RBPosition:High AntennaCfg:SISO		

Hardware Setup

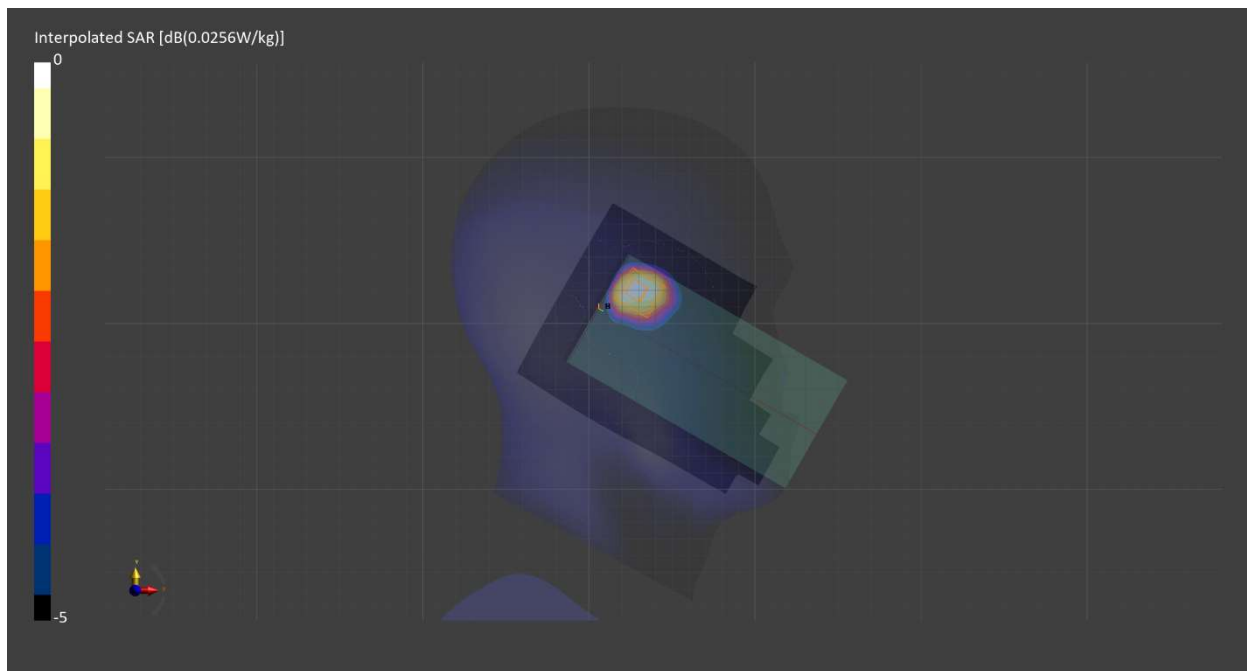
Probe Calibration Date	EX3DV4 - SN7709 2023-11-30	Phantom	Twin-SAM V8.0 (30deg probe tilt) - SN1742
DAE Calibration Date	DAE4 Sn1714 2023-11-22	TSL Meas. Date	HSL900 2024-Mar-26

Scans Setup

	Area Scan	Zoom Scan
Grid Extents [mm]	120.0 x 210.0	30.0 x 30.0 x 30.0
Grid Steps [mm]	15.0 x 15.0	6.0 x 6.0 x 1.5
Sensor Surface [mm]	3.0	1.4
Graded Grid	N/A	Yes
M2/M1 [%]		90.2
Dist 3dB Peak [mm]		7.7

Measurement Results

	Area Scan	Zoom Scan
psSAR1g [W/Kg]	0.020	0.023
psSAR10g [W/Kg]	0.012	0.013
Power Drift [dB]	0.08	-0.06



Measurement Report for Band 2, FRONT, Normal, CELL Main2

Exposure Conditions

Band	Band 2	TSL Permittivity	41.1
Frequency [MHz] Channel Number	1880.000 18900	TSL Conductivity [S/m]	1.43
Group UID	LTE-FDD 10297-AAE	Phantom Section TSL	Flat HSL
Conversion Factor	8.08	Test Distance [mm]	10.00
Communication Configuration	LTE-FDD (SC-FDMA, 50% RB, 20 MHz, QPSK) RBPosition:High AntennaCfg:SISO		

Hardware Setup

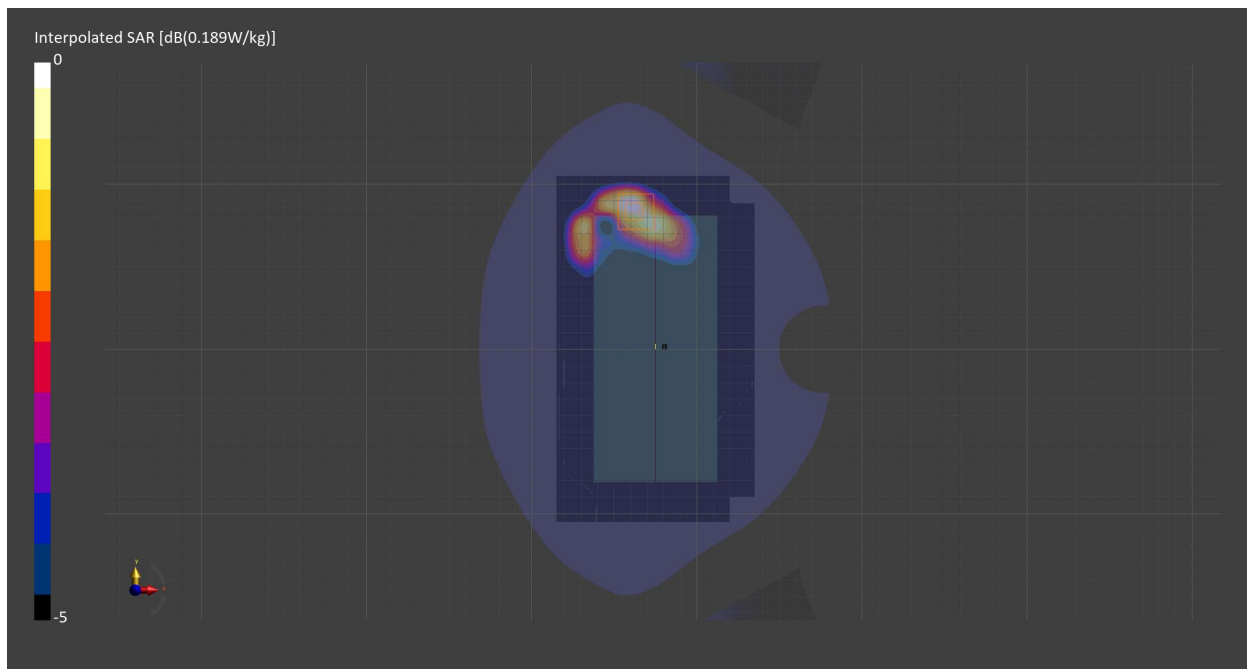
Probe Calibration Date	EX3DV4 - SN7709 2023-11-30	Phantom	Twin-SAM V8.0 (30deg probe tilt) - SN1742
DAE Calibration Date	DAE4 Sn1714 2023-11-22	TSL Meas. Date	HSL900 2024-Mar-26

Scans Setup

	Area Scan	Zoom Scan
Grid Extents [mm]	120.0 x 210.0	30.0 x 30.0 x 30.0
Grid Steps [mm]	15.0 x 15.0	6.0 x 6.0 x 1.5
Sensor Surface [mm]	3.0	1.4
Graded Grid	N/A	Yes
M2/M1 [%]		84.7
Dist 3dB Peak [mm]		8.7

Measurement Results

	Area Scan	Zoom Scan
psSAR1g [W/Kg]	0.148	0.179
psSAR10g [W/Kg]	0.083	0.095
Power Drift [dB]	0.01	-0.01



Measurement Report for Band 2, EDGE BOTTOM, Normal, CELL Main2

Exposure Conditions

Band	Band 2	TSL Permittivity	41.1
Frequency [MHz] Channel Number	1880.000 18900	TSL Conductivity [S/m]	1.43
Group UID	LTE-FDD 10297-AAE	Phantom Section TSL	Flat HSL
Conversion Factor	8.08	Test Distance [mm]	10.00
Communication Configuration	LTE-FDD (SC-FDMA, 50% RB, 20 MHz, QPSK) RBPosition:High AntennaCfg:SISO		

Hardware Setup

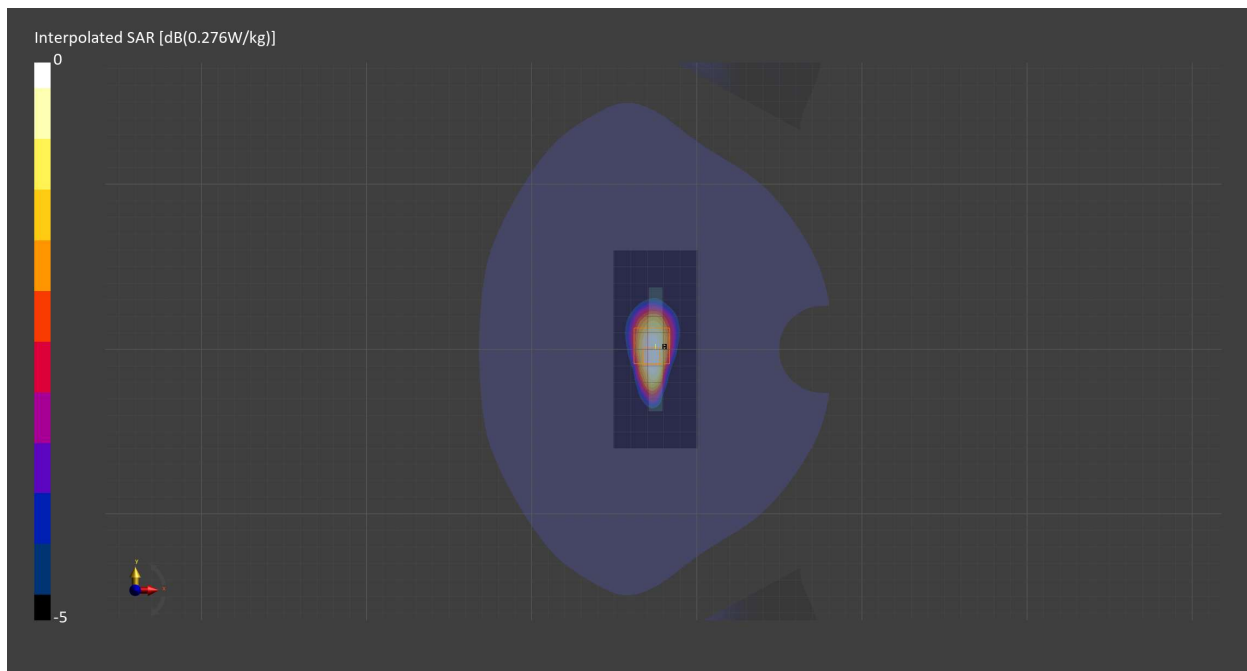
Probe Calibration Date	EX3DV4 - SN7709 2023-11-30	Phantom	Twin-SAM V8.0 (30deg probe tilt) - SN1742
DAE Calibration Date	DAE4 Sn1714 2023-11-22	TSL Meas. Date	HSL900 2024-Mar-26

Scans Setup

	Area Scan	Zoom Scan
Grid Extents [mm]	51.0 x 120.0	30.0 x 30.0 x 30.0
Grid Steps [mm]	8.5 x 15.0	6.0 x 6.0 x 1.5
Sensor Surface [mm]	3.0	1.4
Graded Grid	N/A	Yes
M2/M1 [%]		84.4
Dist 3dB Peak [mm]		9.9

Measurement Results

	Area Scan	Zoom Scan
psSAR1g [W/Kg]	0.225	0.232
psSAR10g [W/Kg]	0.124	0.133
Power Drift [dB]	-0.02	-0.01



Measurement Report for Band 2, TILT, Normal, CELL Sub

Exposure Conditions

Band	Band 2	TSL Permittivity	40.6
Frequency [MHz] Channel Number	1880.000 18900	TSL Conductivity [S/m]	1.39
Group UID	LTE-FDD 10297-AAE	Phantom Section TSL	LeftHead HSL
Conversion Factor	8.18	Test Distance [mm]	0.00
Communication Configuration	LTE-FDD (SC-FDMA, 50% RB, 20 MHz, QPSK) RBPosition:High AntennaCfg:SISO		

Hardware Setup

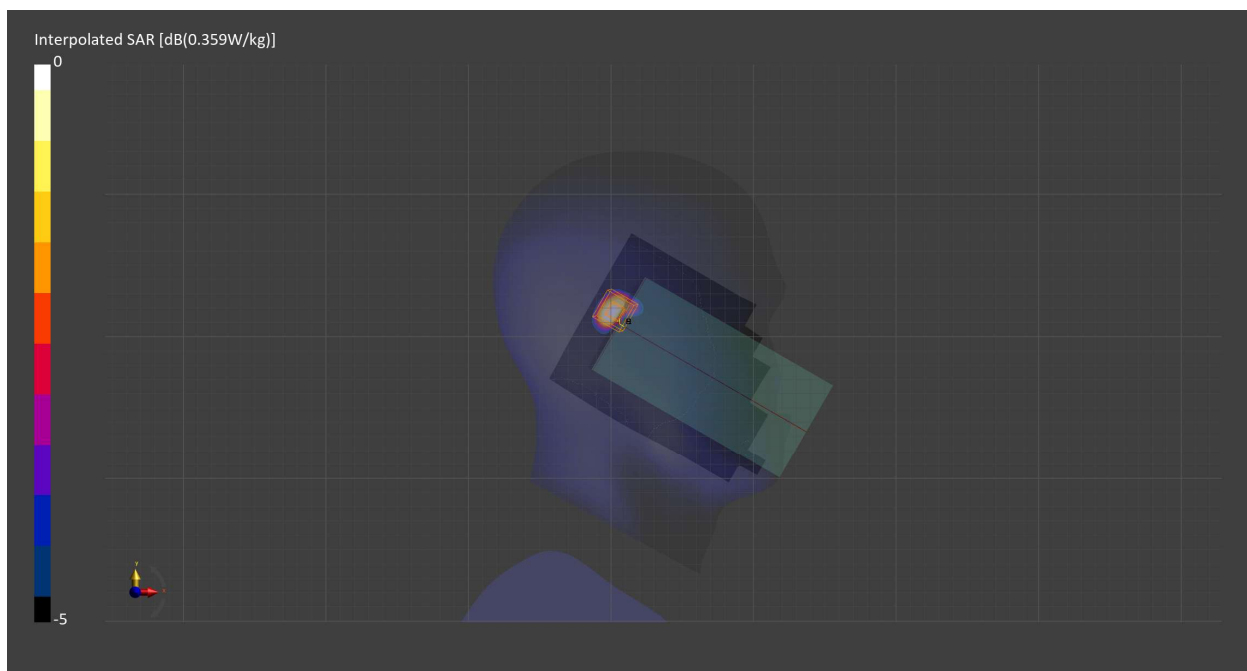
Probe Calibration Date	EX3DV4 - SN7711 2023-03-29	Phantom	Twin-SAM V8.0 (30deg probe tilt) - SN2082
DAE Calibration Date	DAE4 Sn1716 2023-03-16	TSL Meas. Date	HBBL-600-10000 2024-Feb-08

Scans Setup

	Area Scan	Zoom Scan
Grid Extents [mm]	120.0 x 210.0	30.0 x 30.0 x 30.0
Grid Steps [mm]	15.0 x 15.0	4.7 x 4.7 x 1.4
Sensor Surface [mm]	3.0	1.4
Graded Grid	N/A	Yes
M2/M1 [%]		82.1
Dist 3dB Peak [mm]		6.9

Measurement Results

	Area Scan	Zoom Scan
psSAR1g [W/Kg]	0.283	0.323
psSAR10g [W/Kg]	0.128	0.145
Power Drift [dB]	N/A	0.02



Measurement Report for Band 2, BACK, Normal, CELL Sub

Exposure Conditions

Band	Band 2	TSL Permittivity	38.3
Frequency [MHz] Channel Number	1880.000 18900	TSL Conductivity [S/m]	1.40
Group UID	LTE-FDD 10297-AAE	Phantom Section TSL	Flat HSL
Conversion Factor	8.08	Test Distance [mm]	10.00
Communication Configuration	LTE-FDD (SC-FDMA, 50% RB, 20 MHz, QPSK) RBPosition:High AntennaCfg:SISO		

Hardware Setup

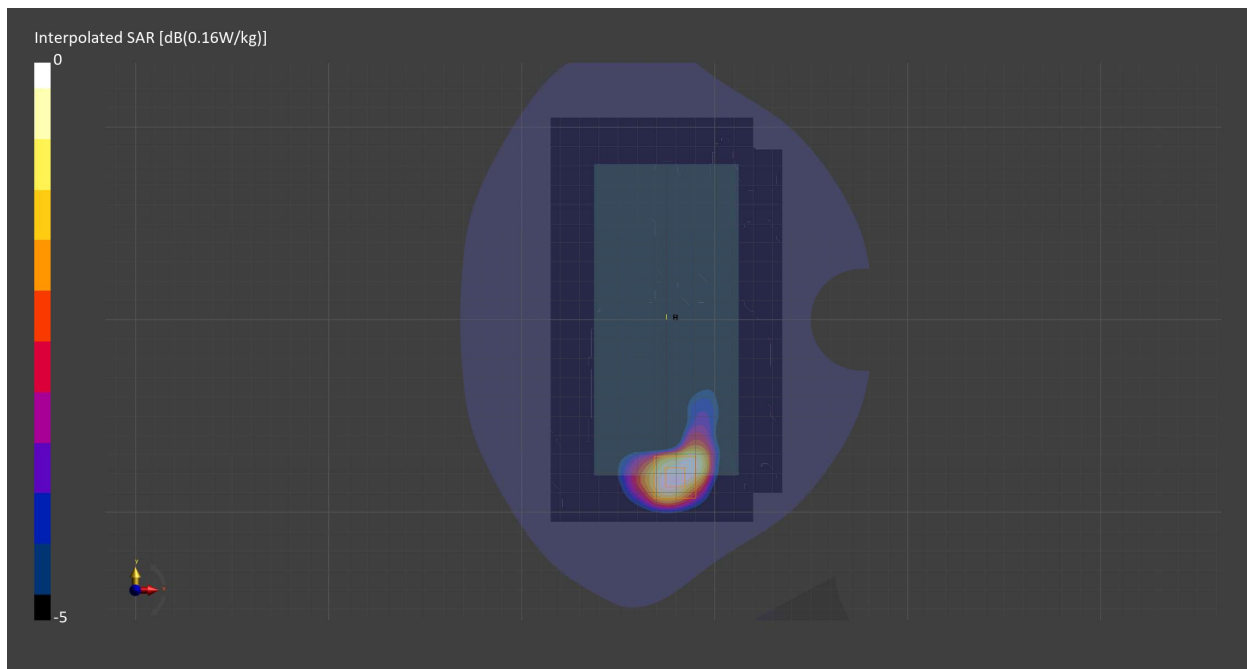
Probe Calibration Date	EX3DV4 - SN7709 2023-11-30	Phantom	Twin-SAM V8.0 (30deg probe tilt) - SN1742
DAE Calibration Date	DAE4 Sn1714 2023-11-22	TSL Meas. Date	HBBL-600-10000 2024-Feb-05

Scans Setup

	Area Scan	Zoom Scan
Grid Extents [mm]	120.0 x 210.0	30.0 x 30.0 x 30.0
Grid Steps [mm]	15.0 x 15.0	6.0 x 6.0 x 1.5
Sensor Surface [mm]	3.0	1.4
Graded Grid	N/A	Yes
M2/M1 [%]		85.6
Dist 3dB Peak [mm]		9.7

Measurement Results

	Area Scan	Zoom Scan
psSAR1g [W/Kg]	0.080	0.093
psSAR10g [W/Kg]	0.046	0.049
Power Drift [dB]	N/A	-0.01



Measurement Report for Band 2, EDGE TOP, Normal, CELL Sub

Exposure Conditions

Band	Band 2	TSL Permittivity	38.3
Frequency [MHz] Channel Number	1880.000 18900	TSL Conductivity [S/m]	1.40
Group UID	LTE-FDD 10297-AAE	Phantom Section TSL	Flat HSL
Conversion Factor	8.08	Test Distance [mm]	10.00
Communication Configuration	LTE-FDD (SC-FDMA, 50% RB, 20 MHz, QPSK) RBPosition:High AntennaCfg:SISO		

Hardware Setup

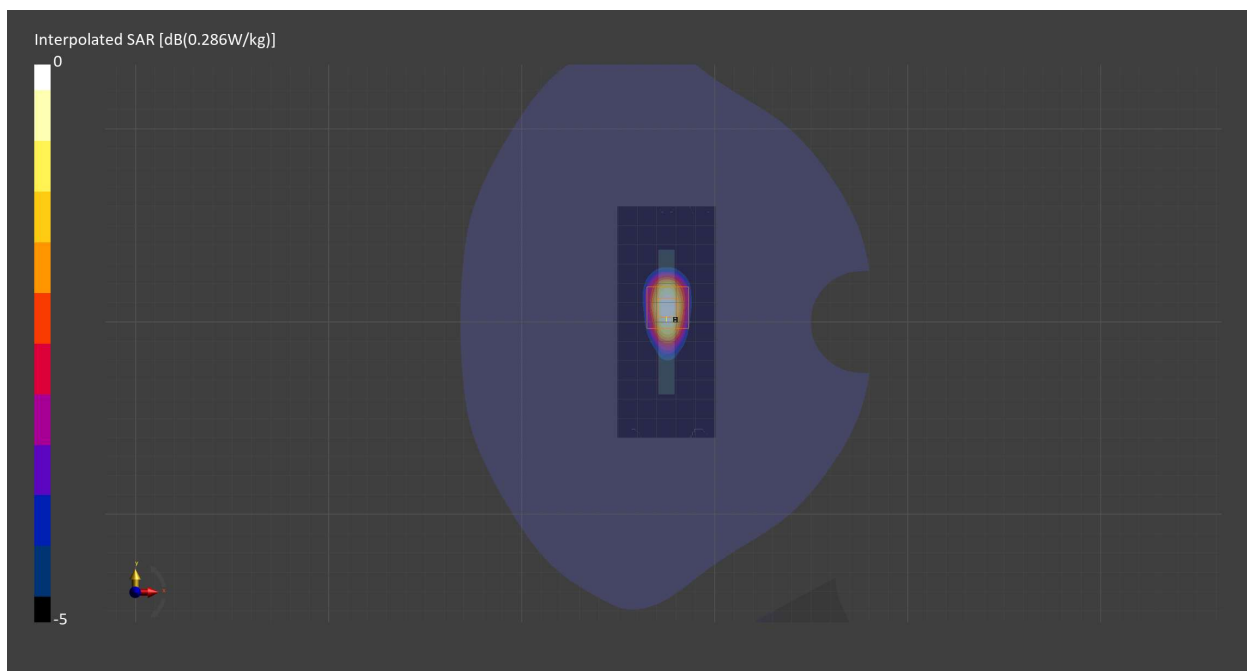
Probe Calibration Date	EX3DV4 - SN7709 2023-11-30	Phantom	Twin-SAM V8.0 (30deg probe tilt) - SN1742
DAE Calibration Date	DAE4 Sn1714 2023-11-22	TSL Meas. Date	HBBL-600-10000 2024-Feb-05

Scans Setup

	Area Scan	Zoom Scan
Grid Extents [mm]	51.0 x 120.0	30.0 x 30.0 x 30.0
Grid Steps [mm]	8.5 x 15.0	6.0 x 6.0 x 1.5
Sensor Surface [mm]	3.0	1.4
Graded Grid	N/A	Yes
M2/M1 [%]		84.5
Dist 3dB Peak [mm]		9.6

Measurement Results

	Area Scan	Zoom Scan
psSAR1g [W/Kg]	0.150	0.157
psSAR10g [W/Kg]	0.078	0.080
Power Drift [dB]	N/A	-0.00



Measurement Report for Band 4, CHEEK, Normal, CELL Main2

Exposure Conditions

Band	Band 4	TSL Permittivity	41.1
Frequency [MHz] Channel Number	1732.500 20175	TSL Conductivity [S/m]	1.38
Group UID	LTE-FDD 10169-CAF	Phantom Section TSL	RightHead HSL
Conversion Factor	8.95	Test Distance [mm]	0.00
Communication Configuration	LTE-FDD (SC-FDMA, 1 RB, 20 MHz, QPSK) RBPosition:Low AntennaCfg:SISO		

Hardware Setup

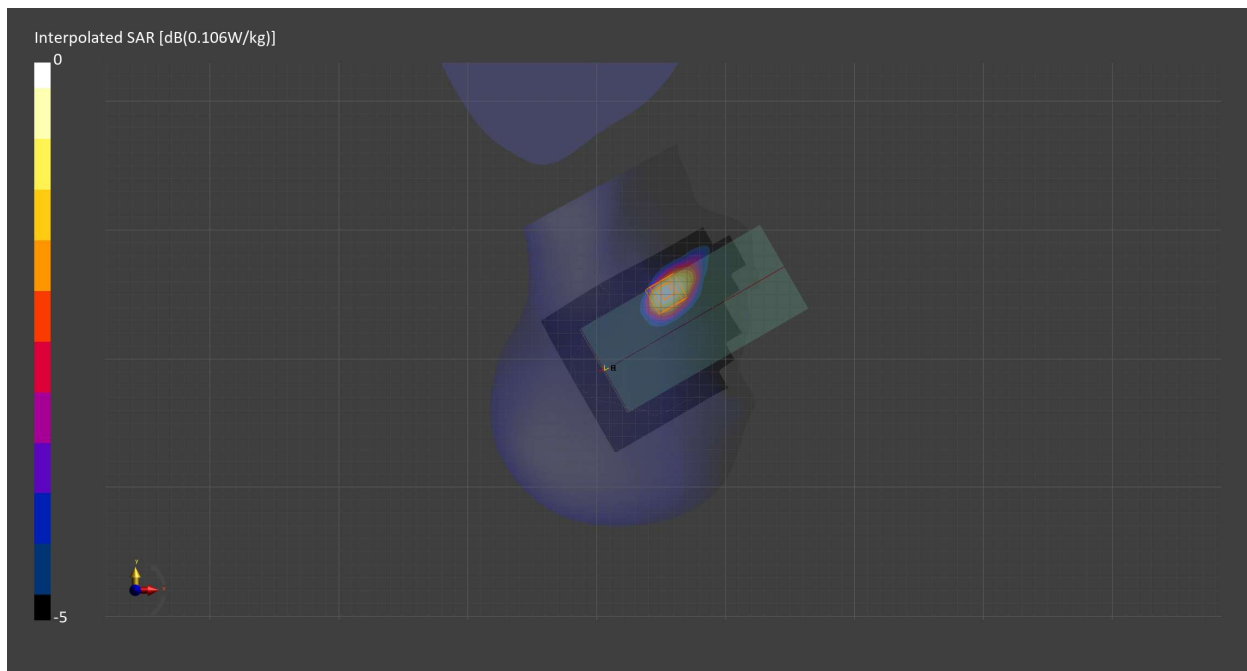
Probe Calibration Date	EX3DV4 - SN7710 2024-01-16	Phantom	Twin-SAM V8.0 (30deg probe tilt) - SN2082
DAE Calibration Date	DAE4 Sn1715 2024-02-12	TSL Meas. Date	HBBL600-10000V6 2024-Mar-25

Scans Setup

	Area Scan	Zoom Scan
Grid Extents [mm]	120.0 x 210.0	30.0 x 30.0 x 30.0
Grid Steps [mm]	15.0 x 15.0	6.0 x 6.0 x 1.5
Sensor Surface [mm]	3.0	1.4
Graded Grid	N/A	Yes
M2/M1 [%]		88.3
Dist 3dB Peak [mm]		9.9

Measurement Results

	Area Scan	Zoom Scan
psSAR1g [W/Kg]	0.087	0.090
psSAR10g [W/Kg]	0.050	0.057
Power Drift [dB]	-0.01	0.02



Measurement Report for Band 4, BACK, Normal, CELL Main2

Exposure Conditions

Band	Band 4	TSL Permittivity	41.1
Frequency [MHz] Channel Number	1732.500 20175	TSL Conductivity [S/m]	1.38
Group UID	LTE-FDD 10297-AAE	Phantom Section TSL	Flat HSL
Conversion Factor	8.95	Test Distance [mm]	10.00
Communication Configuration	LTE-FDD (SC-FDMA, 50% RB, 20 MHz, QPSK) RBPosition:Mid AntennaCfg:SISO		

Hardware Setup

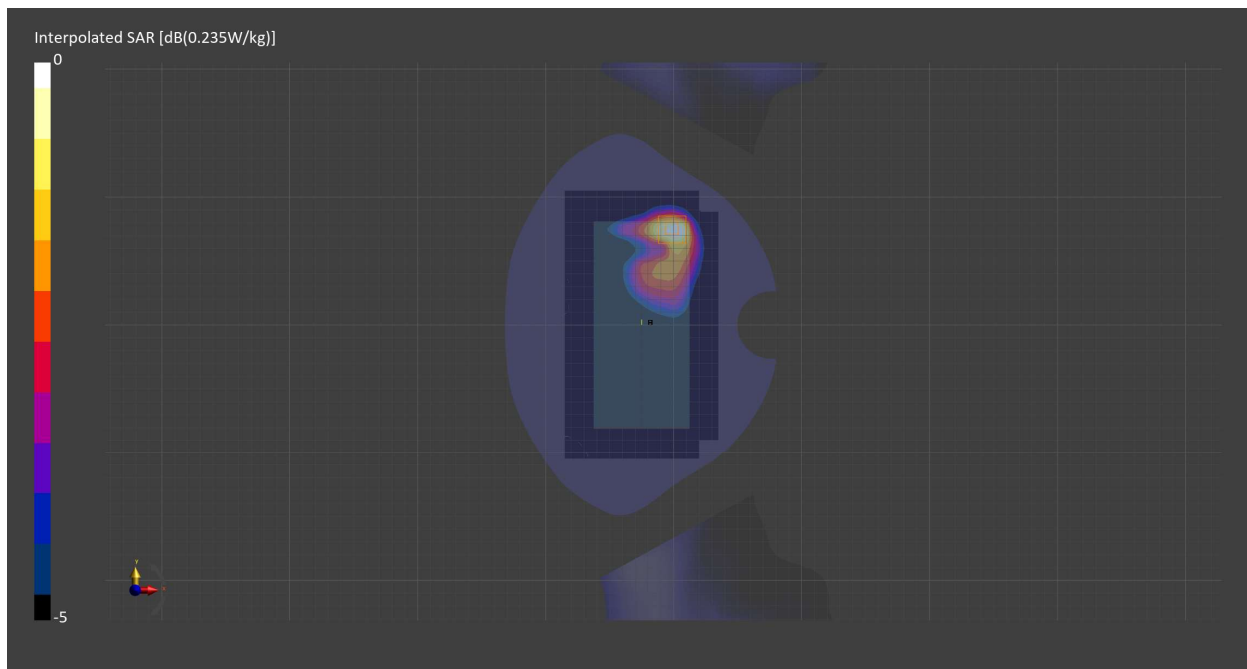
Probe Calibration Date	EX3DV4 - SN7710 2024-01-16	Phantom	Twin-SAM V8.0 (30deg probe tilt) - SN2082
DAE Calibration Date	DAE4 Sn1715 2024-02-12	TSL Meas. Date	HBBL600-10000V6 2024-Mar-25

Scans Setup

	Area Scan	Zoom Scan
Grid Extents [mm]	120.0 x 210.0	30.0 x 30.0 x 30.0
Grid Steps [mm]	15.0 x 15.0	6.0 x 6.0 x 1.5
Sensor Surface [mm]	3.0	1.4
Graded Grid	N/A	Yes
M2/M1 [%]		82.8
Dist 3dB Peak [mm]		11.4

Measurement Results

	Area Scan	Zoom Scan
psSAR1g [W/Kg]	0.194	0.199
psSAR10g [W/Kg]	0.111	0.113
Power Drift [dB]	-0.00	-0.00



Measurement Report for Band 4, EDGE BOTTOM, Normal, CELL Main2

Exposure Conditions

Band	Band 4	TSL Permittivity	41.1
Frequency [MHz] Channel Number	1732.500 20175	TSL Conductivity [S/m]	1.38
Group UID	LTE-FDD 10297-AAE	Phantom Section TSL	Flat HSL
Conversion Factor	8.95	Test Distance [mm]	10.00
Communication Configuration	LTE-FDD (SC-FDMA, 50% RB, 20 MHz, QPSK) RBPosition:Mid AntennaCfg:SISO		

Hardware Setup

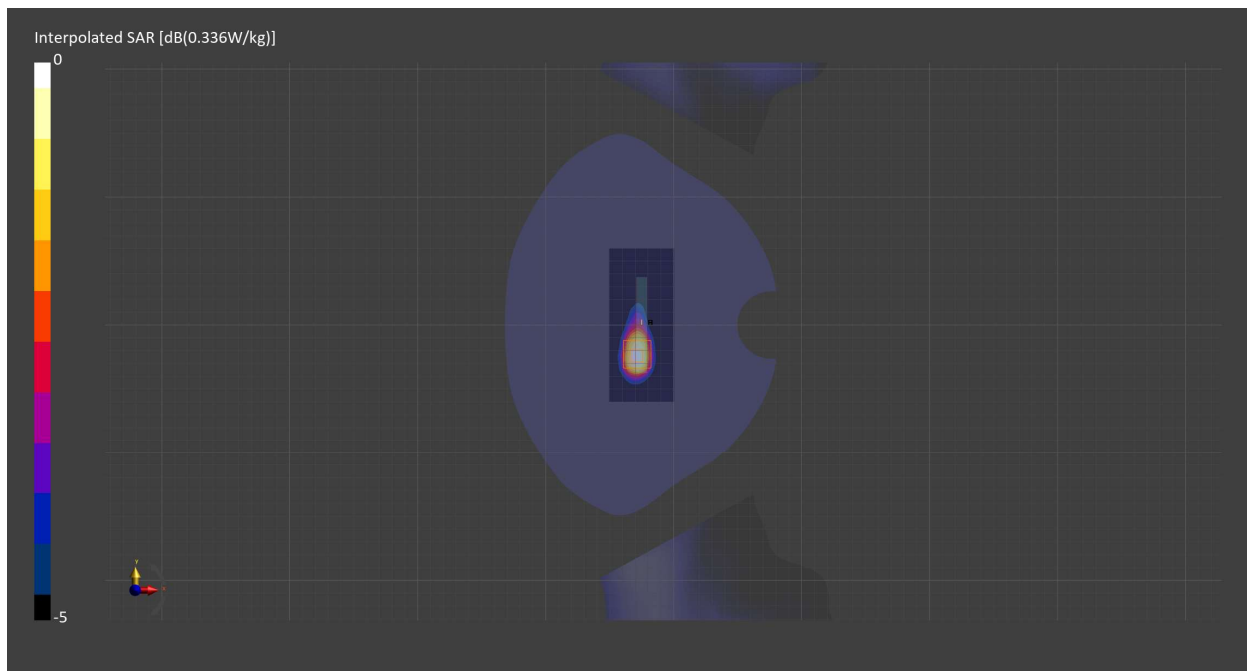
Probe Calibration Date	EX3DV4 - SN7710 2024-01-16	Phantom	Twin-SAM V8.0 (30deg probe tilt) - SN2082
DAE Calibration Date	DAE4 Sn1715 2024-02-12	TSL Meas. Date	HBBL600-10000V6 2024-Mar-25

Scans Setup

	Area Scan	Zoom Scan
Grid Extents [mm]	51.0 x 120.0	30.0 x 30.0 x 30.0
Grid Steps [mm]	8.5 x 15.0	6.0 x 6.0 x 1.5
Sensor Surface [mm]	3.0	1.4
Graded Grid	N/A	Yes
M2/M1 [%]		81.1
Dist 3dB Peak [mm]		10.8

Measurement Results

	Area Scan	Zoom Scan
psSAR1g [W/Kg]	0.271	0.285
psSAR10g [W/Kg]	0.148	0.151
Power Drift [dB]	0.00	0.01



Measurement Report for Band 5, CHEEK, Normal, CELL Main1

Exposure Conditions

Band	Band 5	TSL Permittivity	41.6
Frequency [MHz] Channel Number	836.500 20525	TSL Conductivity [S/m]	0.910
Group UID	LTE-FDD 10154-CAH	Phantom Section TSL	RightHead HSL
Conversion Factor	9.15	Test Distance [mm]	0.00
Communication Configuration	LTE-FDD (SC-FDMA, 50% RB, 10 MHz, QPSK) RBPosition:Low AntennaCfg:SISO		

Hardware Setup

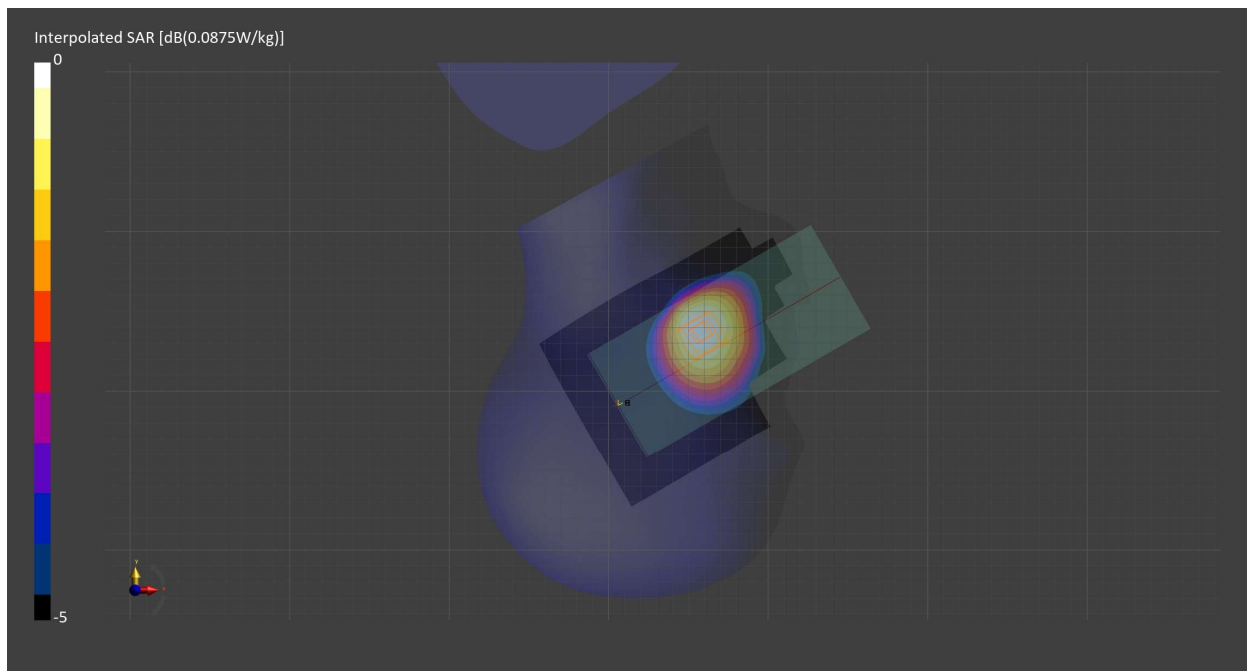
Probe Calibration Date	EX3DV4 - SN7709 2023-11-30	Phantom	Twin-SAM V8.0 (30deg probe tilt) - SN1742
DAE Calibration Date	DAE4 Sn1714 2023-11-22	TSL Meas. Date	HBBL-600-10000 2024-Feb-12

Scans Setup

	Area Scan	Zoom Scan
Grid Extents [mm]	120.0 x 210.0	30.0 x 30.0 x 30.0
Grid Steps [mm]	15.0 x 15.0	6.0 x 6.0 x 1.5
Sensor Surface [mm]	3.0	1.4
Graded Grid	N/A	Yes
M2/M1 [%]		98.3
Dist 3dB Peak [mm]		24.2

Measurement Results

	Area Scan	Zoom Scan
psSAR1g [W/Kg]	0.074	0.077
psSAR10g [W/Kg]	0.051	0.060
Power Drift [dB]	N/A	0.03



Measurement Report for Band 5, BACK, Normal, CELL Main1

Exposure Conditions

Band	Band 5	TSL Permittivity	41.6
Frequency [MHz] Channel Number	836.500 20525	TSL Conductivity [S/m]	0.910
Group UID	LTE-FDD 10154-CAH	Phantom Section TSL	Flat HSL
Conversion Factor	9.15	Test Distance [mm]	10.00
Communication Configuration	LTE-FDD (SC-FDMA, 50% RB, 10 MHz, QPSK) RBPosition:Low AntennaCfg:SISO		

Hardware Setup

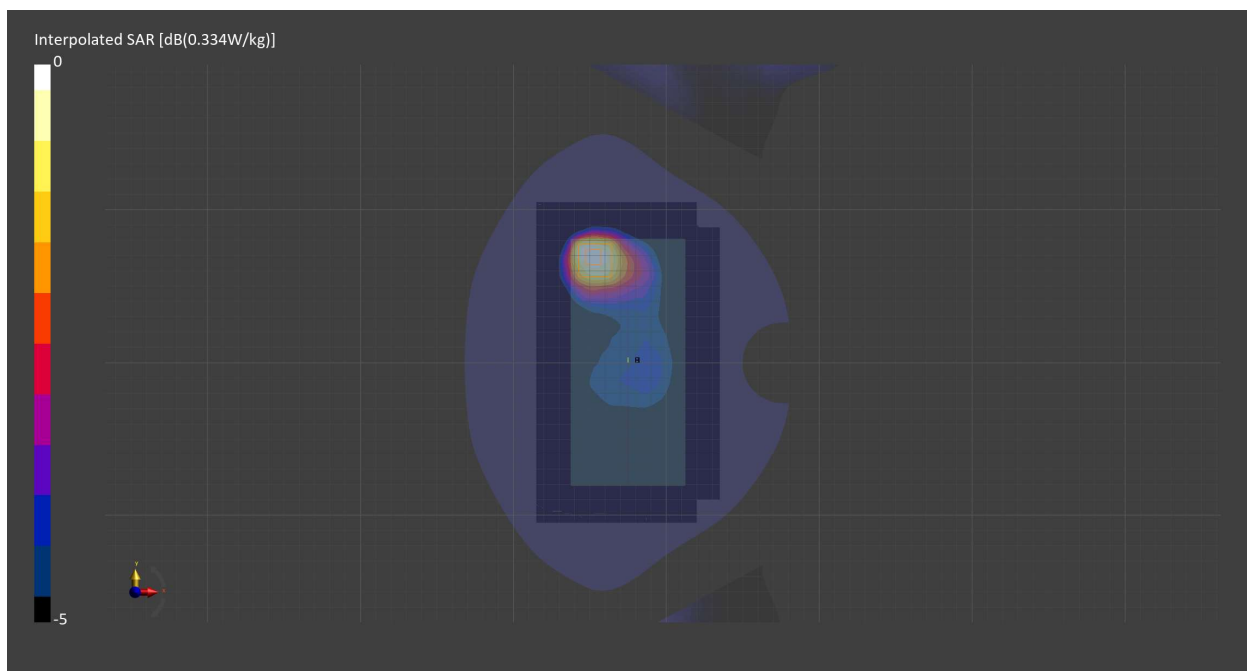
Probe Calibration Date	EX3DV4 - SN7709 2023-11-30	Phantom	Twin-SAM V8.0 (30deg probe tilt) - SN1742
DAE Calibration Date	DAE4 Sn1714 2023-11-22	TSL Meas. Date	HBBL-600-10000 2024-Feb-12

Scans Setup

	Area Scan	Zoom Scan
Grid Extents [mm]	120.0 x 210.0	30.0 x 30.0 x 30.0
Grid Steps [mm]	15.0 x 15.0	6.0 x 6.0 x 1.5
Sensor Surface [mm]	3.0	1.4
Graded Grid	N/A	Yes
M2/M1 [%]		87.2
Dist 3dB Peak [mm]		13.5

Measurement Results

	Area Scan	Zoom Scan
psSAR1g [W/Kg]	0.210	0.208
psSAR10g [W/Kg]	0.137	0.127
Power Drift [dB]	N/A	-0.02



Measurement Report for Band 12, CHEEK, Normal, CELL Main1

Exposure Conditions

Band	Band 12	TSL Permittivity	42.1
Frequency [MHz] Channel Number	707.500 23095	TSL Conductivity [S/m]	0.866
Group UID	LTE-FDD 10155-CAH	Phantom Section TSL	LeftHead HSL
Conversion Factor	9.5	Test Distance [mm]	0.00
Communication Configuration	LTE-FDD (SC-FDMA, 50% RB, 10 MHz, 16-QAM) RBPosition:Mid AntennaCfg:SISO		

Hardware Setup

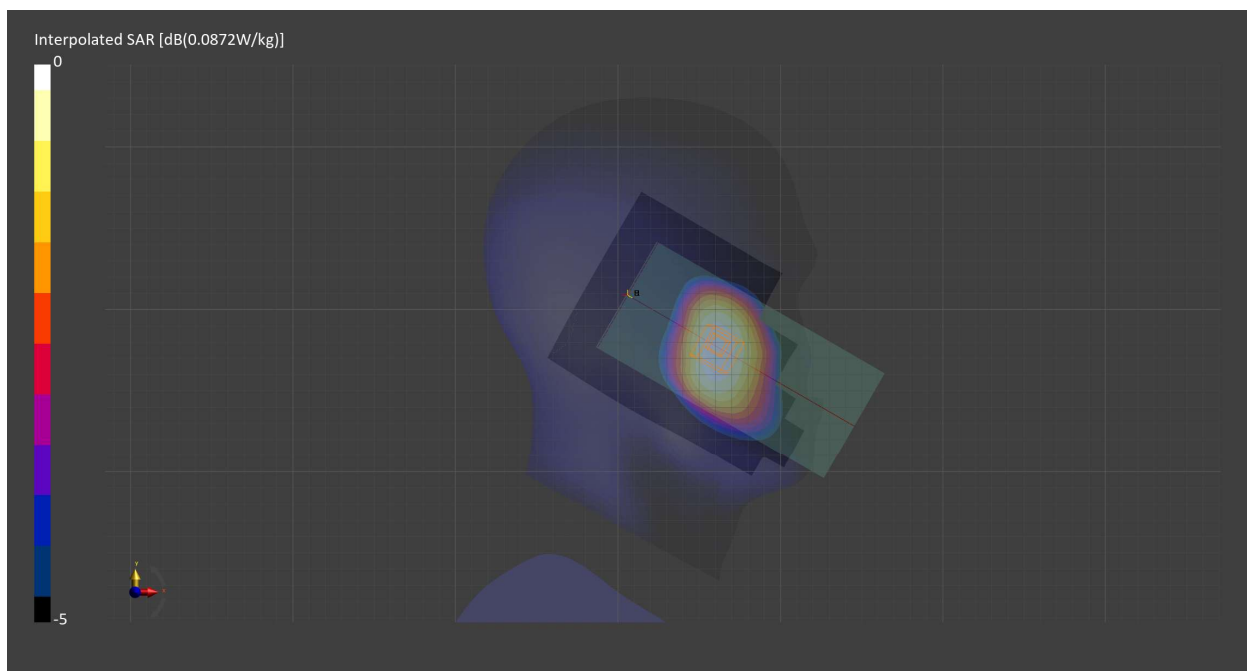
Probe Calibration Date	EX3DV4 - SN7709 2023-11-30	Phantom	Twin-SAM V8.0 (30deg probe tilt) - SN1742
DAE Calibration Date	DAE4 Sn1714 2023-11-22	TSL Meas. Date	HBBL-600-10000 2024-Feb-12

Scans Setup

	Area Scan	Zoom Scan
Grid Extents [mm]	120.0 x 210.0	30.0 x 30.0 x 30.0
Grid Steps [mm]	15.0 x 15.0	6.0 x 6.0 x 1.5
Sensor Surface [mm]	3.0	1.4
Graded Grid	N/A	Yes
M2/M1 [%]		99.5
Dist 3dB Peak [mm]		22.5

Measurement Results

	Area Scan	Zoom Scan
psSAR1g [W/Kg]	0.076	0.079
psSAR10g [W/Kg]	0.053	0.064
Power Drift [dB]	N/A	-0.02



Measurement Report for Band 12, BACK, Normal, CELL Main1

Exposure Conditions

Band	Band 12	TSL Permittivity	42.1
Frequency [MHz] Channel Number	707.500 23095	TSL Conductivity [S/m]	0.866
Group UID	LTE-FDD 10155-CAH	Phantom Section TSL	Flat HSL
Conversion Factor	9.5	Test Distance [mm]	10.00
Communication Configuration	LTE-FDD (SC-FDMA, 50% RB, 10 MHz, 16-QAM) RBPosition:Mid AntennaCfg:SISO		

Hardware Setup

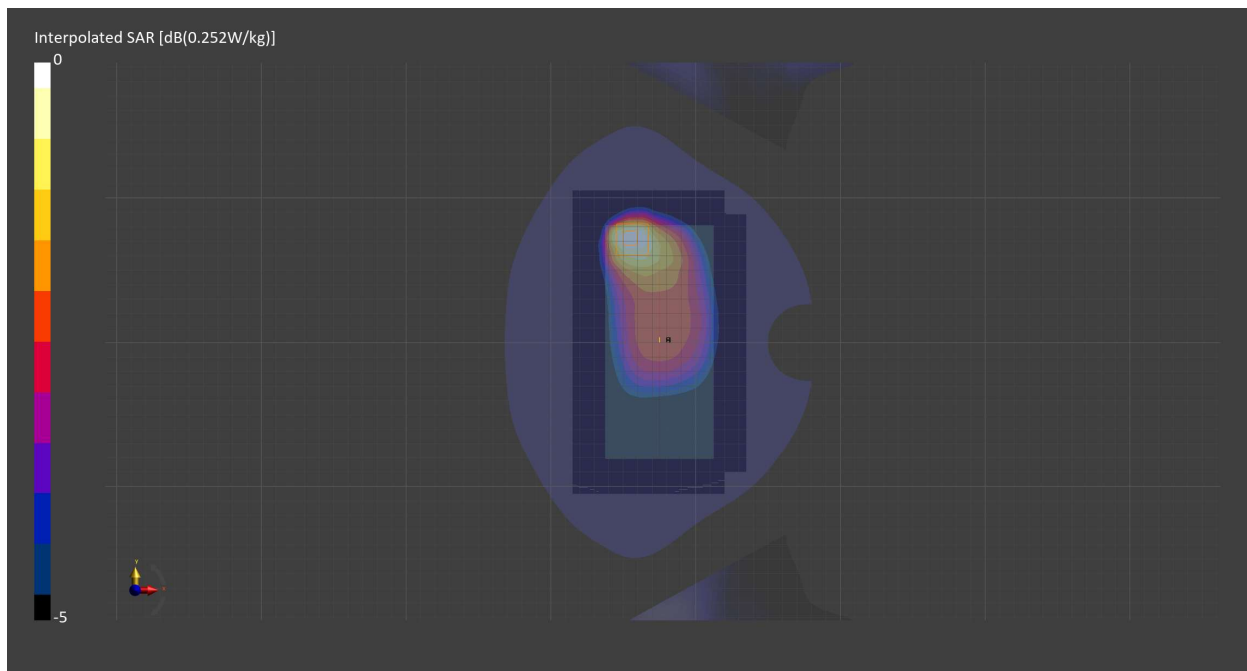
Probe Calibration Date	EX3DV4 - SN7709 2023-11-30	Phantom	Twin-SAM V8.0 (30deg probe tilt) - SN1742
DAE Calibration Date	DAE4 Sn1714 2023-11-22	TSL Meas. Date	HBBL-600-10000 2024-Feb-12

Scans Setup

	Area Scan	Zoom Scan
Grid Extents [mm]	120.0 x 210.0	30.0 x 30.0 x 30.0
Grid Steps [mm]	15.0 x 15.0	6.0 x 6.0 x 1.5
Sensor Surface [mm]	3.0	1.4
Graded Grid	N/A	Yes
M2/M1 [%]		82.1
Dist 3dB Peak [mm]		12.8

Measurement Results

	Area Scan	Zoom Scan
psSAR1g [W/Kg]	0.157	0.154
psSAR10g [W/Kg]	0.105	0.097
Power Drift [dB]	N/A	0.01



Measurement Report for Band 12, EDGE LEFT, Normal, CELL Main1

Exposure Conditions

Band	Band 12	TSL Permittivity	42.1
Frequency [MHz] Channel Number	707.500 23095	TSL Conductivity [S/m]	0.866
Group UID	LTE-FDD 10175-CAH	Phantom Section TSL	Flat HSL
Conversion Factor	9.5	Test Distance [mm]	10.00
Communication Configuration	LTE-FDD (SC-FDMA, 1 RB, 10 MHz, QPSK) RBPosition:Low AntennaCfg:SISO		

Hardware Setup

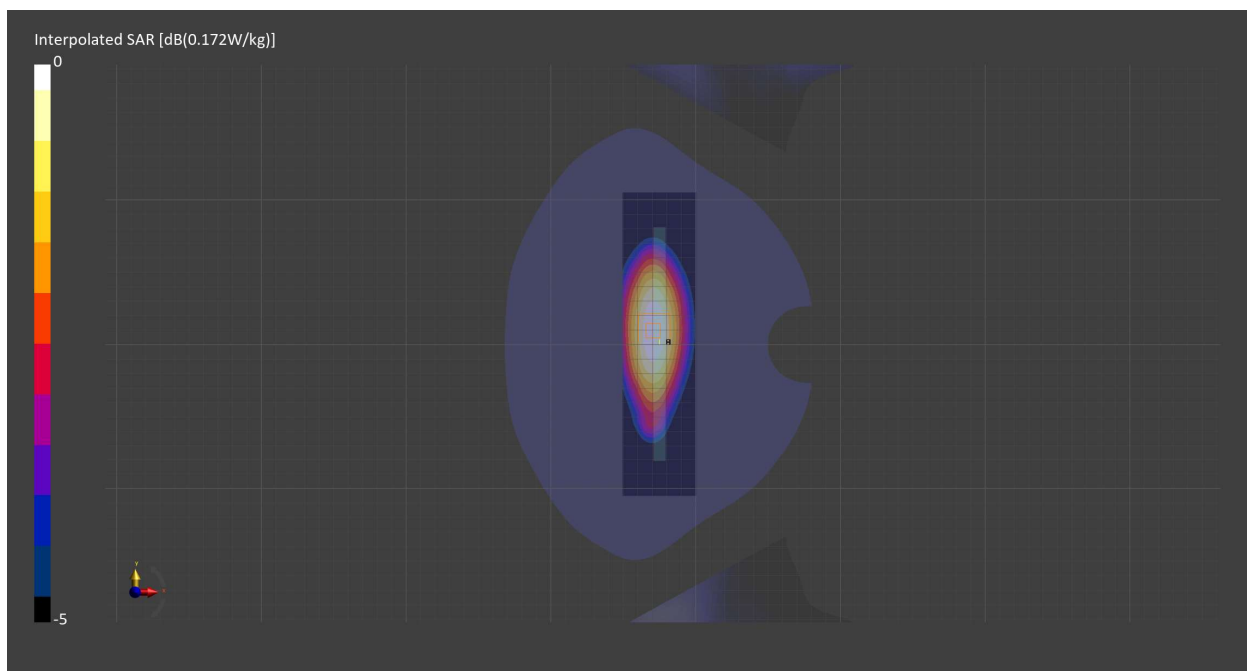
Probe Calibration Date	EX3DV4 - SN7709 2023-11-30	Phantom	Twin-SAM V8.0 (30deg probe tilt) - SN1742
DAE Calibration Date	DAE4 Sn1714 2023-11-22	TSL Meas. Date	HBBL-600-10000 2024-Feb-12

Scans Setup

	Area Scan	Zoom Scan
Grid Extents [mm]	51.0 x 210.0	30.0 x 30.0 x 30.0
Grid Steps [mm]	8.5 x 15.0	6.0 x 6.0 x 1.5
Sensor Surface [mm]	3.0	1.4
Graded Grid	N/A	Yes
M2/M1 [%]		89.6
Dist 3dB Peak [mm]		> 15.0

Measurement Results

	Area Scan	Zoom Scan
psSAR1g [W/Kg]	0.151	0.154
psSAR10g [W/Kg]	0.104	0.107
Power Drift [dB]	N/A	0.02



Measurement Report for Band 13, CHEEK, Normal, CELL Main1

Exposure Conditions

Band	Band 13	TSL Permittivity	40.9
Frequency [MHz] Channel Number	782.000 23230	TSL Conductivity [S/m]	0.906
Group UID	LTE-FDD 10154-CAH	Phantom Section TSL	LeftHead HSL
Conversion Factor	10.56	Test Distance [mm]	0.00
Communication Configuration	LTE-FDD (SC-FDMA, 50% RB, 10 MHz, QPSK) RBPosition:Mid AntennaCfg:SISO		

Hardware Setup

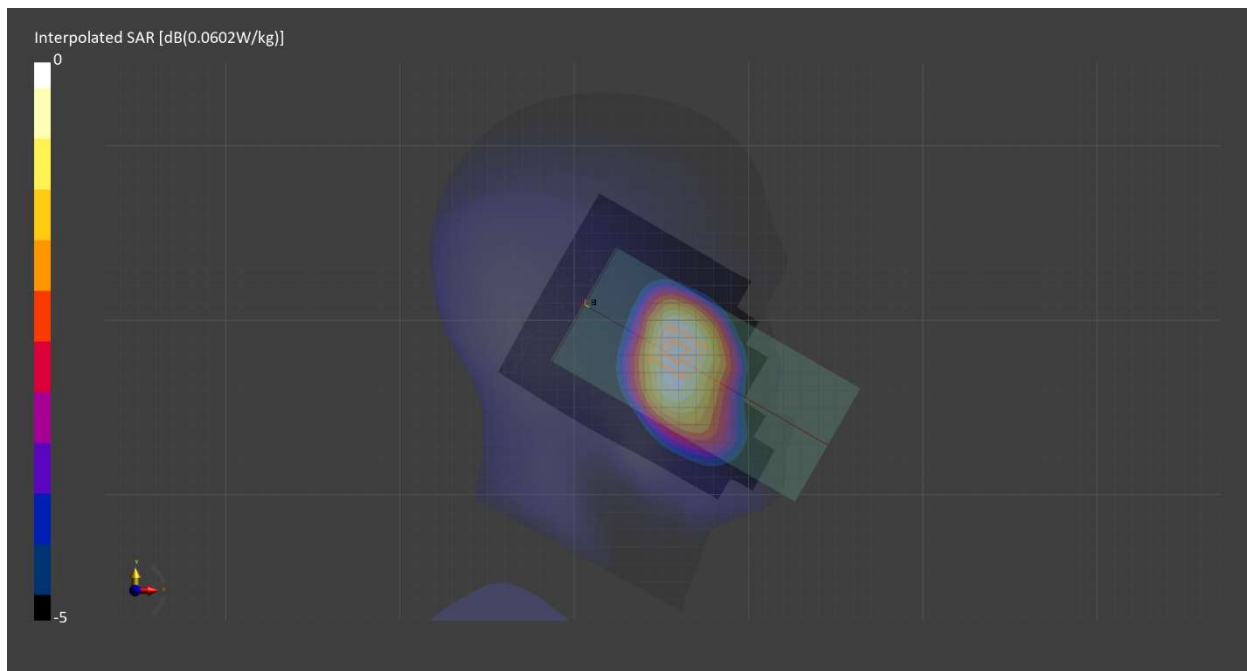
Probe Calibration Date	EX3DV4 - SN7709 2022-12-12	Phantom	Twin-SAM V8.0 (30deg probe tilt) - SN1742
DAE Calibration Date	DAE4 Sn1714 2022-11-23	TSL Meas. Date	HBBL-600-10000 2024-Feb-01

Scans Setup

	Area Scan	Zoom Scan
Grid Extents [mm]	120.0 x 210.0	30.0 x 30.0 x 30.0
Grid Steps [mm]	15.0 x 15.0	6.0 x 6.0 x 1.5
Sensor Surface [mm]	3.0	1.4
Graded Grid	N/A	Yes
M2/M1 [%]		95.9
Dist 3dB Peak [mm]		> 15.0

Measurement Results

	Area Scan	Zoom Scan
psSAR1g [W/Kg]	0.053	0.057
psSAR10g [W/Kg]	0.037	0.045
Power Drift [dB]	N/A	-0.01



Measurement Report for Band 13, BACK, Normal, CELL Main1

Exposure Conditions

Band	Band 13	TSL Permittivity	40.9
Frequency [MHz] Channel Number	782.000 23230	TSL Conductivity [S/m]	0.906
Group UID	LTE-FDD 10154-CAH	Phantom Section TSL	Flat HSL
Conversion Factor	10.56	Test Distance [mm]	10.00
Communication Configuration	LTE-FDD (SC-FDMA, 50% RB, 10 MHz, QPSK) RBPosition:Mid AntennaCfg:SISO		

Hardware Setup

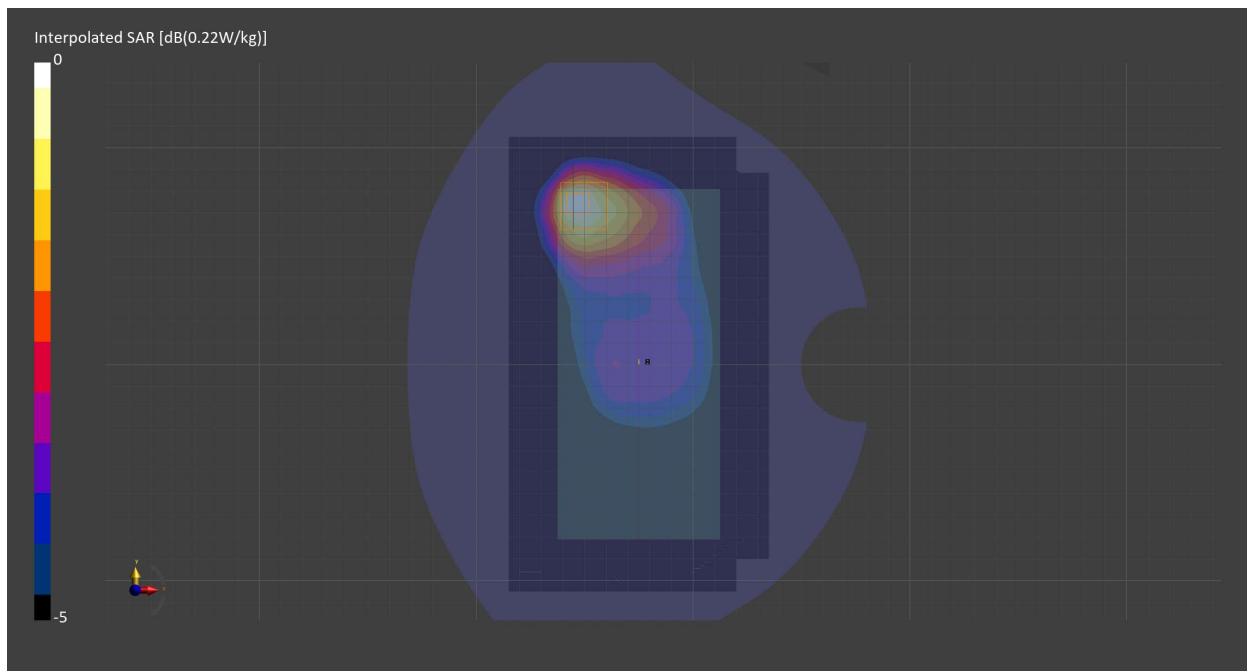
Probe Calibration Date	EX3DV4 - SN7709 2022-12-12	Phantom	Twin-SAM V8.0 (30deg probe tilt) - SN1742
DAE Calibration Date	DAE4 Sn1714 2022-11-23	TSL Meas. Date	HBBL-600-10000 2024-Feb-01

Scans Setup

	Area Scan	Zoom Scan
Grid Extents [mm]	120.0 x 210.0	30.0 x 30.0 x 30.0
Grid Steps [mm]	15.0 x 15.0	6.0 x 6.0 x 1.5
Sensor Surface [mm]	3.0	1.4
Graded Grid	N/A	Yes
M2/M1 [%]		83.7
Dist 3dB Peak [mm]		12.6

Measurement Results

	Area Scan	Zoom Scan
psSAR1g [W/Kg]	0.126	0.121
psSAR10g [W/Kg]	0.081	0.073
Power Drift [dB]	N/A	-0.01



Measurement Report for Band 41, CHEEK, Normal, CELL Main2

Exposure Conditions

Band	Band 41	TSL Permittivity	40.2
Frequency [MHz] Channel Number	2593.000 40620	TSL Conductivity [S/m]	1.88
Group UID	LTE-TDD 10435-AAG	Phantom Section TSL	RightHead HSL
Conversion Factor	7.67	Test Distance [mm]	0.00
Communication Configuration	LTE-TDD (SC-FDMA, 1 RB, 20 MHz, QPSK, UL Subframe=2,3,4,7,8,9) RBPosition:Mid AntennaCfg:SISO		

Hardware Setup

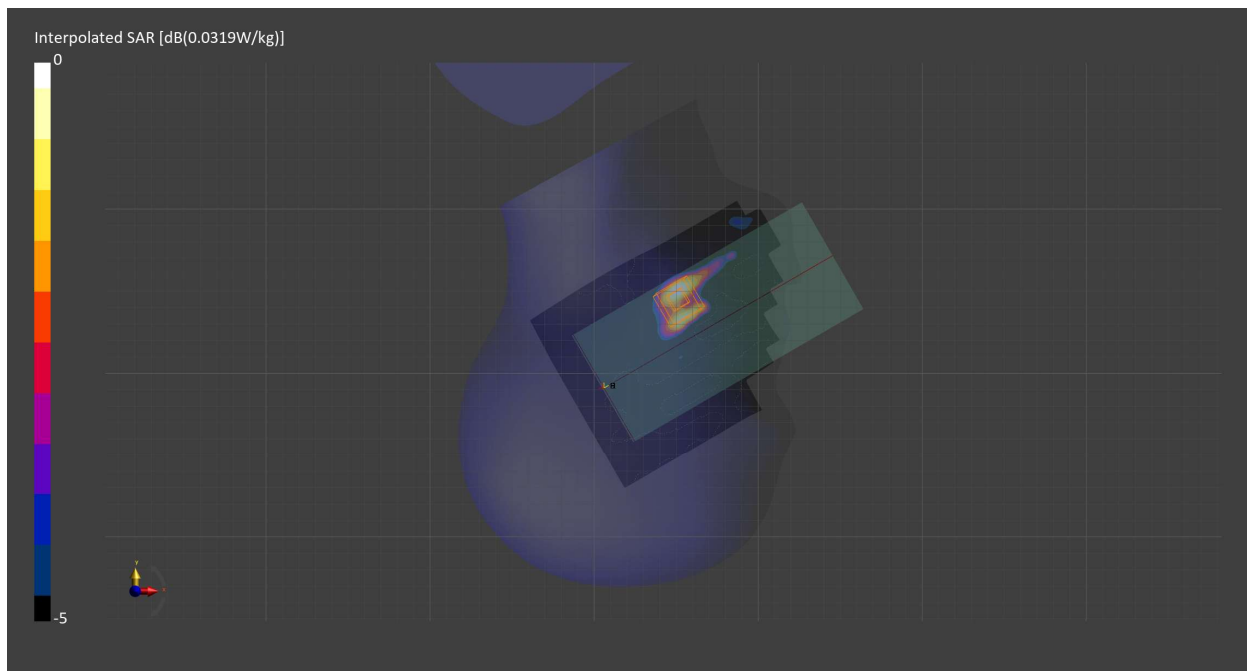
Probe Calibration Date	EX3DV4 - SN7711 2023-03-29	Phantom	Twin-SAM V8.0 (30deg probe tilt) - SN2082
DAE Calibration Date	DAE4 Sn1716 2023-03-16	TSL Meas. Date	HBBL-600-10000 2024-Feb-12

Scans Setup

	Area Scan	Zoom Scan
Grid Extents [mm]	120.0 x 200.0	30.0 x 30.0 x 30.0
Grid Steps [mm]	10.0 x 10.0	5.0 x 5.0 x 1.5
Sensor Surface [mm]	3.0	1.4
Graded Grid	N/A	Yes
M2/M1 [%]		90.1
Dist 3dB Peak [mm]		7.6

Measurement Results

	Area Scan	Zoom Scan
psSAR1g [W/Kg]	0.022	0.019
psSAR10g [W/Kg]	0.011	0.010
Power Drift [dB]	N/A	-2.33



Measurement Report for Band 41, BACK, Normal, CELL Main2

Exposure Conditions

Band	Band 41	TSL Permittivity	39.3
Frequency [MHz] Channel Number	2593.000 40620	TSL Conductivity [S/m]	1.88
Group UID	LTE-TDD 10435-AAG	Phantom Section TSL	Flat HSL
Conversion Factor	7.67	Test Distance [mm]	10.00
Communication Configuration	LTE-TDD (SC-FDMA, 1 RB, 20 MHz, QPSK, UL Subframe=2,3,4,7,8,9) RBPosition:Mid AntennaCfg:SISO		

Hardware Setup

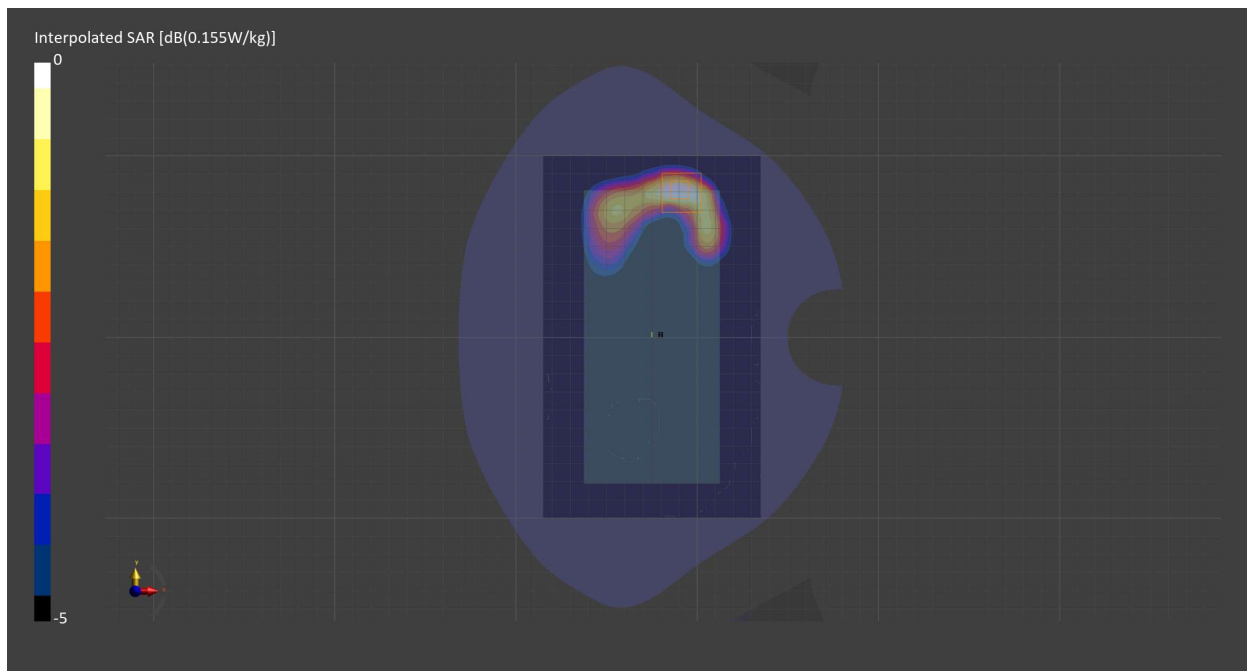
Probe Calibration Date	EX3DV4 - SN7711 2023-03-29	Phantom	Twin-SAM V8.0 (30deg probe tilt) - SN2082
DAE Calibration Date	DAE4 Sn1716 2023-03-16	TSL Meas. Date	HBBL-600-10000 2024-Feb-20

Scans Setup

	Area Scan	Zoom Scan
Grid Extents [mm]	120.0 x 200.0	30.0 x 30.0 x 30.0
Grid Steps [mm]	10.0 x 10.0	5.0 x 5.0 x 1.5
Sensor Surface [mm]	3.0	1.4
Graded Grid	N/A	Yes
M2/M1 [%]		83.8
Dist 3dB Peak [mm]		10.0

Measurement Results

	Area Scan	Zoom Scan
psSAR1g [W/Kg]	0.085	0.083
psSAR10g [W/Kg]	0.042	0.041
Power Drift [dB]	N/A	-0.17



Measurement Report for Band 41, EDGE BOTTOM, Normal, CELL Main2

Exposure Conditions

Band	Band 41	TSL Permittivity	39.3
Frequency [MHz] Channel Number	2593.000 40620	TSL Conductivity [S/m]	1.88
Group UID	LTE-TDD 10494-AAG	Phantom Section TSL	Flat HSL
Conversion Factor	7.67	Test Distance [mm]	10.00
Communication Configuration	LTE-TDD (SC-FDMA, 50% RB, 20 MHz, QPSK, UL Subframe=2,3,4,7,8,9) RBPosition:Mid AntennaCfg:SISO		

Hardware Setup

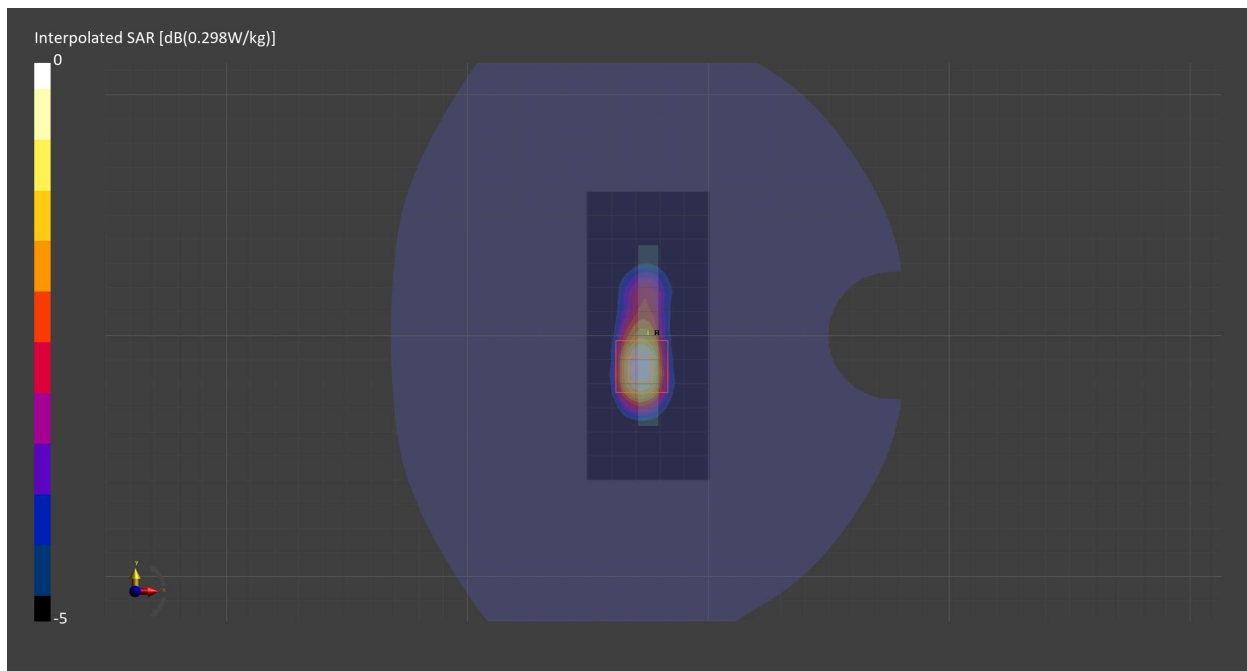
Probe Calibration Date	EX3DV4 - SN7711 2023-03-29	Phantom	Twin-SAM V8.0 (30deg probe tilt) - SN2082
DAE Calibration Date	DAE4 Sn1716 2023-03-16	TSL Meas. Date	HBBL-600-10000 2024-Feb-20

Scans Setup

	Area Scan	Zoom Scan
Grid Extents [mm]	51.0 x 120.0	30.0 x 30.0 x 30.0
Grid Steps [mm]	8.5 x 10.0	5.0 x 5.0 x 1.5
Sensor Surface [mm]	3.0	1.4
Graded Grid	N/A	Yes
M2/M1 [%]		81.2
Dist 3dB Peak [mm]		10.0

Measurement Results

	Area Scan	Zoom Scan
psSAR1g [W/Kg]	0.145	0.152
psSAR10g [W/Kg]	0.071	0.073
Power Drift [dB]	N/A	0.00



Measurement Report for Band n66, CHEEK, Normal, CELL Main2

Exposure Conditions

Band	Band n66	TSL Permittivity	39.0
Frequency [MHz] Channel Number	1745.000 349000	TSL Conductivity [S/m]	1.34
Group UID	5G NR FR1 FDD 10931-AAC	Phantom Section TSL	RightHead HSL
Conversion Factor	9.05	Test Distance [mm]	0.00
Communication Configuration	5G NR (DFT-s-OFDM, 1 RB, 20 MHz, QPSK, 15 kHz) RBPosition:Low AntennaCfg:SISO		

Hardware Setup

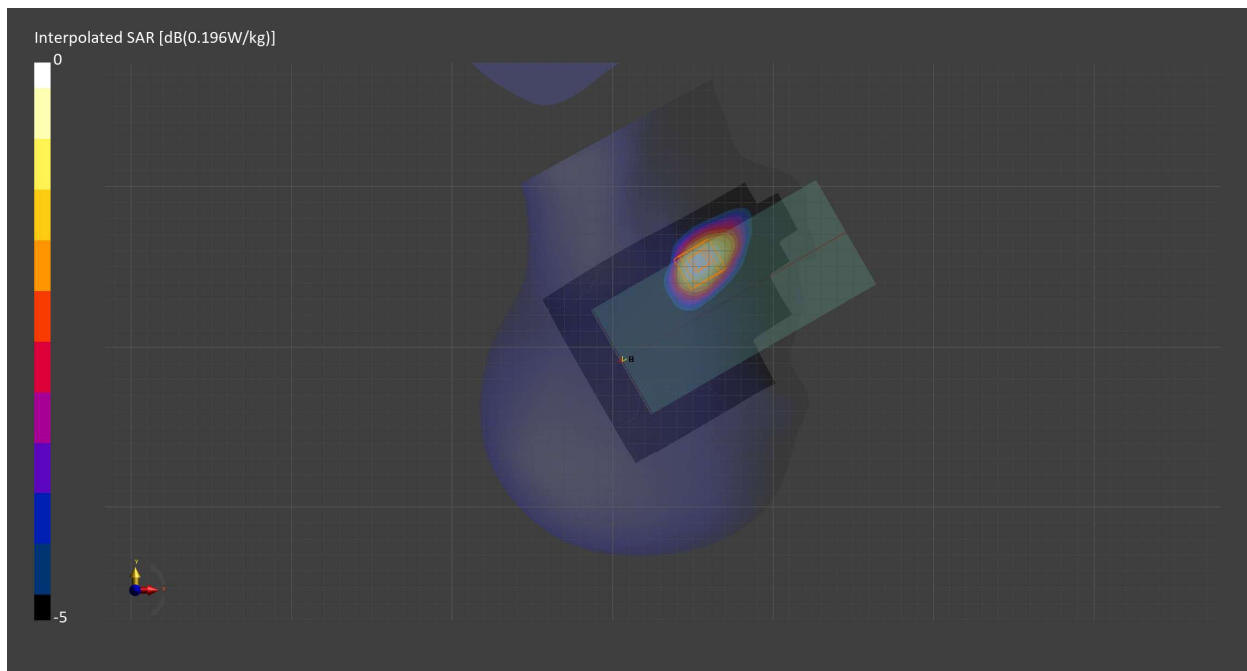
Probe Calibration Date	EX3DV4 - SN7709 2022-12-12	Phantom	Twin-SAM V8.0 (30deg probe tilt) - SN1742
DAE Calibration Date	DAE4 Sn1714 2022-11-23	TSL Meas. Date	HBBL-600-10000 2024-Jan-16

Scans Setup

	Area Scan	Zoom Scan
Grid Extents [mm]	120.0 x 210.0	30.0 x 30.0 x 30.0
Grid Steps [mm]	15.0 x 15.0	6.0 x 6.0 x 1.5
Sensor Surface [mm]	3.0	1.4
Graded Grid	N/A	Yes
M2/M1 [%]		91.0
Dist 3dB Peak [mm]		14.2

Measurement Results

	Area Scan	Zoom Scan
psSAR1g [W/Kg]	0.133	0.137
psSAR10g [W/Kg]	0.079	0.088
Power Drift [dB]	N/A	-0.02



Measurement Report for Band n66, BACK, Normal, CELL Main2

Exposure Conditions

Band	Band n66	TSL Permittivity	39.0
Frequency [MHz] Channel Number	1745.000 349000	TSL Conductivity [S/m]	1.34
Group UID	5G NR FR1 FDD 10939-AAC	Phantom Section TSL	Flat HSL
Conversion Factor	9.05	Test Distance [mm]	10.00
Communication Configuration 5G NR (DFT-s-OFDM, 50% RB, 20 MHz, QPSK, 15 kHz) RBPosition:Mid AntennaCfg:SISO			

Hardware Setup

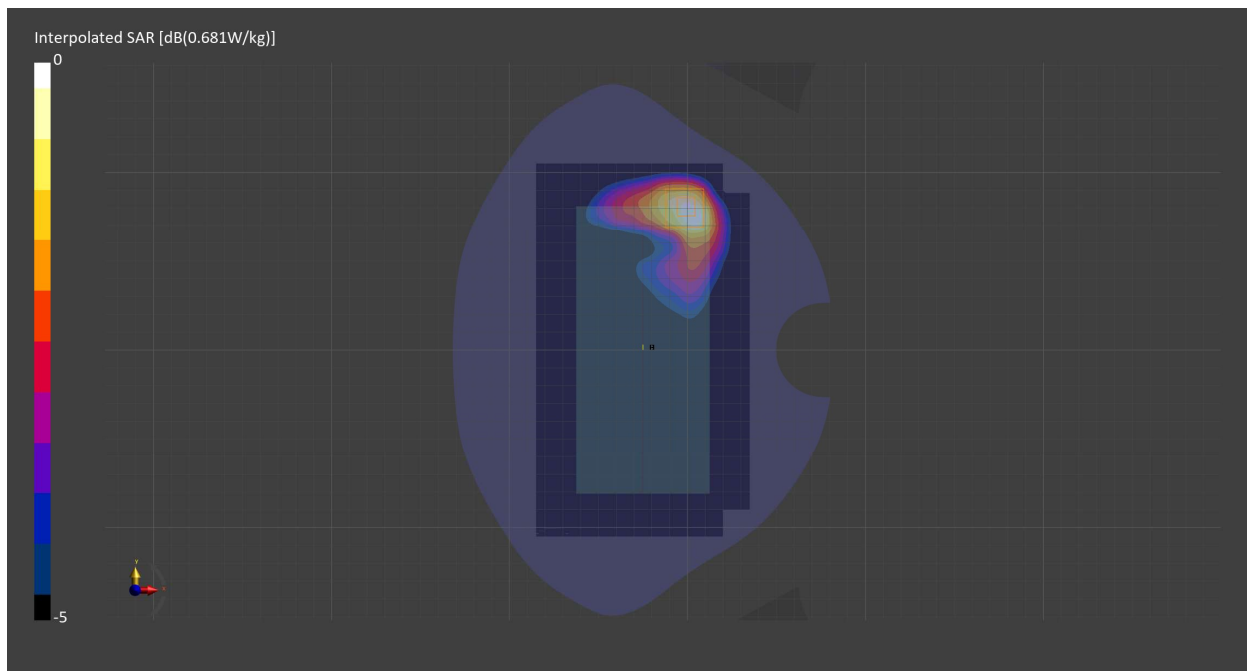
Probe Calibration Date	EX3DV4 - SN7709 2022-12-12	Phantom	Twin-SAM V8.0 (30deg probe tilt) - SN1742
DAE Calibration Date	DAE4 Sn1714 2022-11-23	TSL Meas. Date	HBBL-600-10000 2024-Jan-16

Scans Setup

	Area Scan	Zoom Scan
Grid Extents [mm]	120.0 x 210.0	30.0 x 30.0 x 30.0
Grid Steps [mm]	15.0 x 15.0	6.0 x 6.0 x 1.5
Sensor Surface [mm]	3.0	1.4
Graded Grid	N/A	Yes
M2/M1 [%]		84.3
Dist 3dB Peak [mm]		11.9

Measurement Results

	Area Scan	Zoom Scan
psSAR1g [W/Kg]	0.356	0.393
psSAR10g [W/Kg]	0.209	0.221
Power Drift [dB]	N/A	-0.01



Measurement Report for Band n66, EDGE BOTTOM, Normal, CELL Main2

Exposure Conditions

Band	Band n66	TSL Permittivity	39.0
Frequency [MHz] Channel Number	1745.000 349000	TSL Conductivity [S/m]	1.34
Group UID	5G NR FR1 FDD 10939-AAC	Phantom Section TSL	Flat HSL
Conversion Factor	9.05	Test Distance [mm]	10.00
Communication Configuration 5G NR (DFT-s-OFDM, 50% RB, 20 MHz, QPSK, 15 kHz) RBPosition:Mid AntennaCfg:SISO			

Hardware Setup

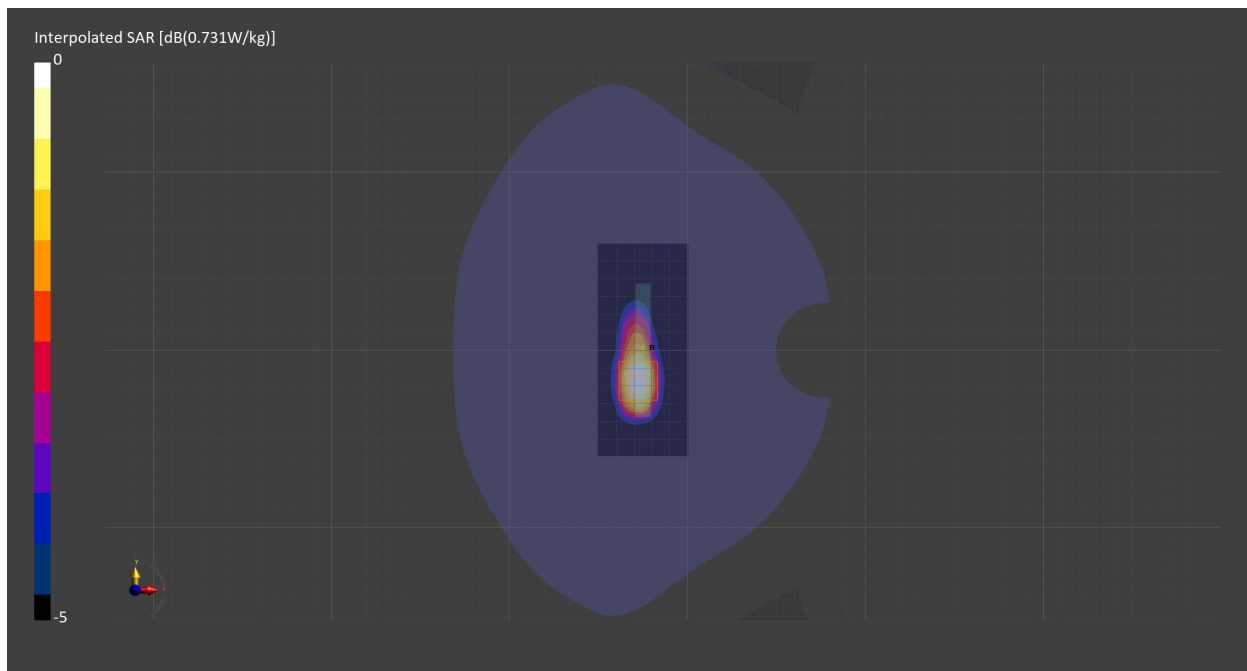
Probe Calibration Date	EX3DV4 - SN7709 2022-12-12	Phantom	Twin-SAM V8.0 (30deg probe tilt) - SN1742
DAE Calibration Date	DAE4 Sn1714 2022-11-23	TSL Meas. Date	HBBL-600-10000 2024-Jan-16

Scans Setup

	Area Scan	Zoom Scan
Grid Extents [mm]	51.0 x 120.0	30.0 x 30.0 x 30.0
Grid Steps [mm]	8.5 x 15.0	6.0 x 6.0 x 1.5
Sensor Surface [mm]	3.0	1.4
Graded Grid	N/A	Yes
M2/M1 [%]		85.4
Dist 3dB Peak [mm]		10.8

Measurement Results

	Area Scan	Zoom Scan
psSAR1g [W/Kg]	0.395	0.409
psSAR10g [W/Kg]	0.218	0.221
Power Drift [dB]	N/A	-0.09



Measurement Report for WLAN 2.4GHz, CHEEK, Normal, WiFi Chain 0

Exposure Conditions

Band	WLAN 2.4GHz	TSL Permittivity	38.8
Frequency [MHz] Channel Number	2437.000 6	TSL Conductivity [S/m]	1.82
Group UID	WLAN 10415-AAA	Phantom Section TSL	RightHead HSL
Conversion Factor	7.66	Test Distance [mm]	0.00
Communication Configuration	IEEE 802.11b WiFi 2.4 GHz (DSSS, 1 Mbps, 99pc duty cycle)		

Hardware Setup

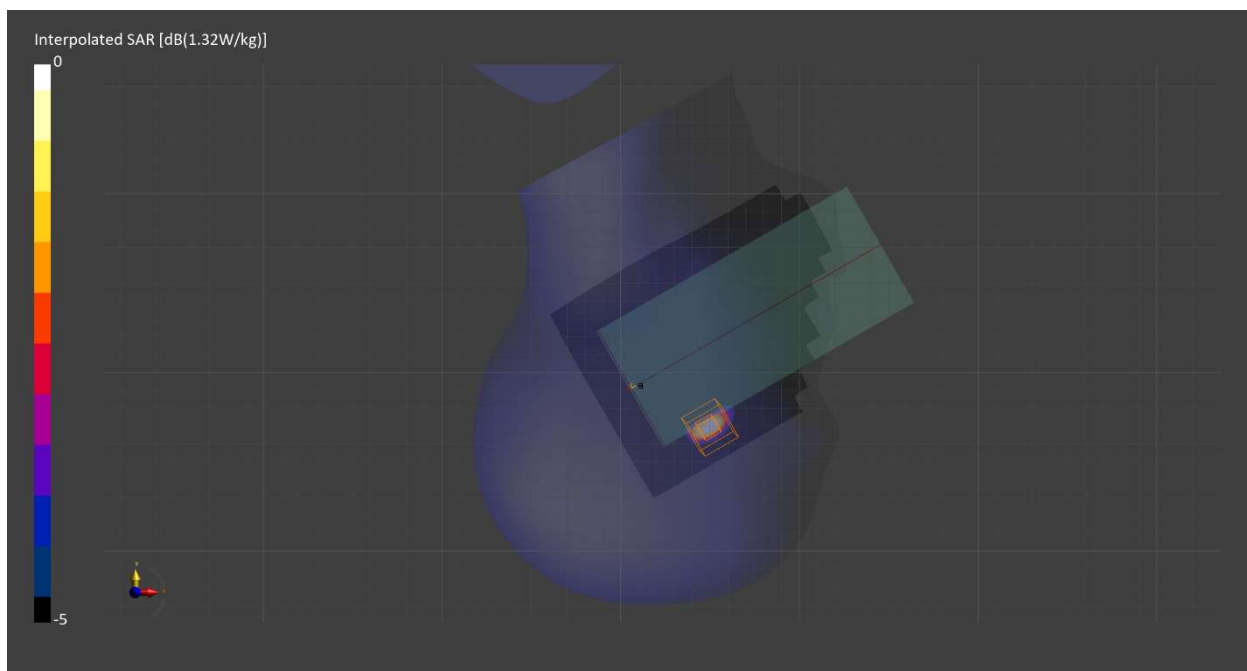
Probe Calibration Date	EX3DV4 - SN7709 2023-11-30	Phantom	Twin-SAM V8.0 (30deg probe tilt) - SN1742
DAE Calibration Date	DAE4 Sn1714 2023-11-22	TSL Meas. Date	HBBL-600-10000 2024-Feb-19

Scans Setup

	Area Scan	Zoom Scan
Grid Extents [mm]	120.0 x 200.0	30.0 x 30.0 x 30.0
Grid Steps [mm]	10.0 x 10.0	3.8 x 3.8 x 1.4
Sensor Surface [mm]	3.0	1.4
Graded Grid	N/A	Yes
M2/M1 [%]		74.1
Dist 3dB Peak [mm]		3.9

Measurement Results

	Area Scan	Zoom Scan
psSAR1g [W/Kg]	0.458	0.487
psSAR10g [W/Kg]	0.174	0.177
Power Drift [dB]	N/A	0.02



Measurement Report for WLAN 2.4GHz, BACK, Normal, WiFi Chain 0

Exposure Conditions

Band	WLAN 2.4GHz	TSL Permittivity	38.8
Frequency [MHz] Channel Number	2437.000 6	TSL Conductivity [S/m]	1.82
Group UID	WLAN 10415-AAA	Phantom Section TSL	Flat HSL
Conversion Factor	7.66	Test Distance [mm]	10.00
Communication Configuration	IEEE 802.11b WiFi 2.4 GHz (DSSS, 1 Mbps, 99pc duty cycle)		

Hardware Setup

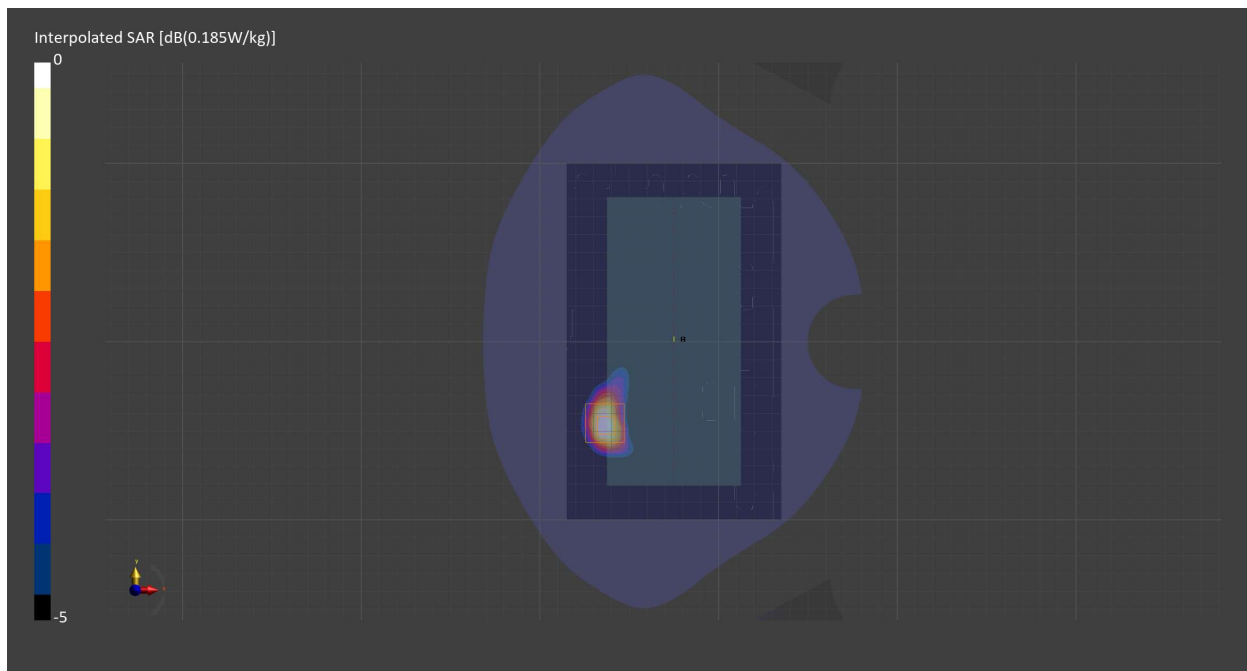
Probe Calibration Date	EX3DV4 - SN7709 2023-11-30	Phantom	Twin-SAM V8.0 (30deg probe tilt) - SN1742
DAE Calibration Date	DAE4 Sn1714 2023-11-22	TSL Meas. Date	HBBL-600-10000 2024-Feb-19

Scans Setup

	Area Scan	Zoom Scan
Grid Extents [mm]	120.0 x 200.0	30.0 x 30.0 x 30.0
Grid Steps [mm]	10.0 x 10.0	5.0 x 5.0 x 1.5
Sensor Surface [mm]	3.0	1.4
Graded Grid	N/A	Yes
M2/M1 [%]		81.5
Dist 3dB Peak [mm]		9.0

Measurement Results

	Area Scan	Zoom Scan
psSAR1g [W/Kg]	0.092	0.096
psSAR10g [W/Kg]	0.044	0.044
Power Drift [dB]	N/A	-0.05



Measurement Report for WLAN 2.4GHz, EDGE LEFT, Normal, WiFi Chain 0

Exposure Conditions

Band	WLAN 2.4GHz	TSL Permittivity	38.8
Frequency [MHz] Channel Number	2437.000 6	TSL Conductivity [S/m]	1.82
Group UID	WLAN 10415-AAA	Phantom Section TSL	Flat HSL
Conversion Factor	7.66	Test Distance [mm]	10.00
Communication Configuration	IEEE 802.11b WiFi 2.4 GHz (DSSS, 1 Mbps, 99pc duty cycle)		

Hardware Setup

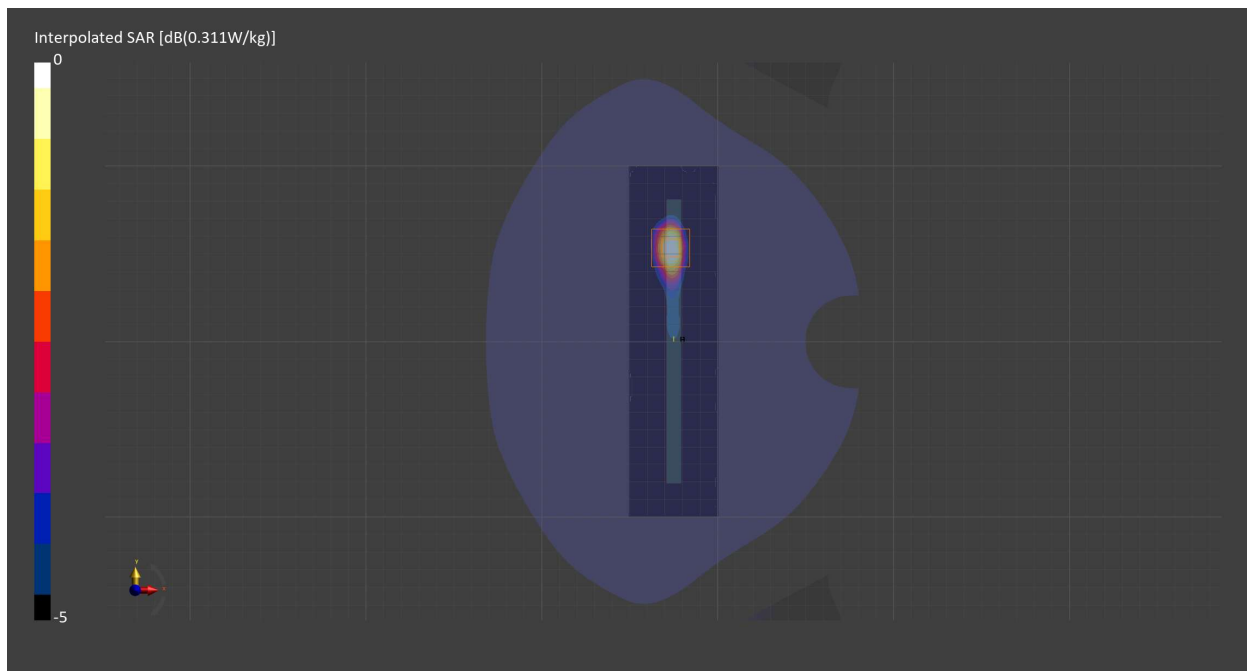
Probe Calibration Date	EX3DV4 - SN7709 2023-11-30	Phantom	Twin-SAM V8.0 (30deg probe tilt) - SN1742
DAE Calibration Date	DAE4 Sn1714 2023-11-22	TSL Meas. Date	HBBL-600-10000 2024-Feb-19

Scans Setup

	Area Scan	Zoom Scan
Grid Extents [mm]	51.0 x 200.0	30.0 x 30.0 x 30.0
Grid Steps [mm]	8.5 x 10.0	5.0 x 5.0 x 1.5
Sensor Surface [mm]	3.0	1.4
Graded Grid	N/A	Yes
M2/M1 [%]		81.0
Dist 3dB Peak [mm]		8.1

Measurement Results

	Area Scan	Zoom Scan
psSAR1g [W/Kg]	0.155	0.156
psSAR10g [W/Kg]	0.069	0.070
Power Drift [dB]	N/A	-0.01



Measurement Report for WLAN 2.4GHz, CHEEK, Simul, WiFi Chain 0

Exposure Conditions

Band	WLAN 2.4GHz	TSL Permittivity	38.8
Frequency [MHz] Channel Number	2437.000 6	TSL Conductivity [S/m]	1.82
Group UID	WLAN 10415-AAA	Phantom Section TSL	RightHead HSL
Conversion Factor	7.66	Test Distance [mm]	0.00
Communication Configuration	IEEE 802.11b WiFi 2.4 GHz (DSSS, 1 Mbps, 99pc duty cycle)		

Hardware Setup

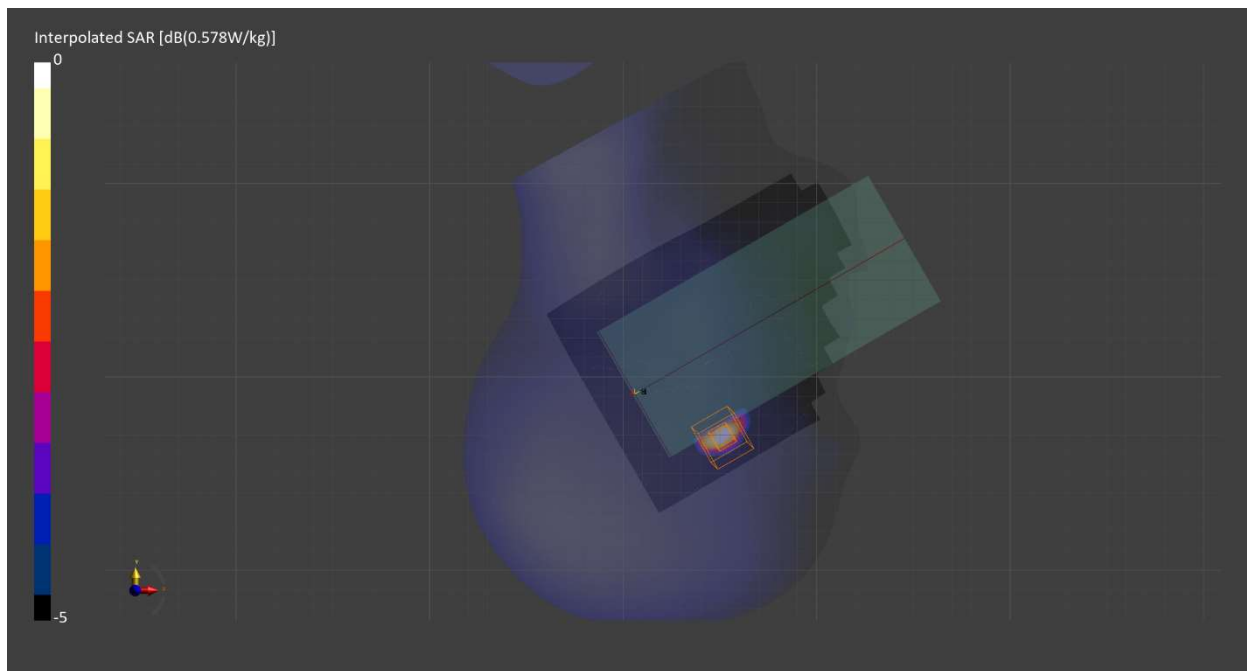
Probe Calibration Date	EX3DV4 - SN7709 2023-11-30	Phantom	Twin-SAM V8.0 (30deg probe tilt) - SN1742
DAE Calibration Date	DAE4 Sn1714 2023-11-22	TSL Meas. Date	HBBL-600-10000 2024-Feb-19

Scans Setup

	Area Scan	Zoom Scan
Grid Extents [mm]	120.0 x 200.0	30.0 x 30.0 x 30.0
Grid Steps [mm]	10.0 x 10.0	4.7 x 4.7 x 1.5
Sensor Surface [mm]	3.0	1.4
Graded Grid	N/A	Yes
M2/M1 [%]		78.4
Dist 3dB Peak [mm]		5.8

Measurement Results

	Area Scan	Zoom Scan
psSAR1g [W/Kg]	0.224	0.240
psSAR10g [W/Kg]	0.089	0.089
Power Drift [dB]	N/A	0.00



Measurement Report for WLAN 2.4GHz, BACK, Simul, WiFi Chain 0

Exposure Conditions

Band	WLAN 2.4GHz	TSL Permittivity	38.8
Frequency [MHz] Channel Number	2437.000 6	TSL Conductivity [S/m]	1.82
Group UID	WLAN 10415-AAA	Phantom Section TSL	Flat HSL
Conversion Factor	7.66	Test Distance [mm]	10.00
Communication Configuration	IEEE 802.11b WiFi 2.4 GHz (DSSS, 1 Mbps, 99pc duty cycle)		

Hardware Setup

Probe Calibration Date	EX3DV4 - SN7709 2023-11-30	Phantom	Twin-SAM V8.0 (30deg probe tilt) - SN1742
DAE Calibration Date	DAE4 Sn1714 2023-11-22	TSL Meas. Date	HBBL-600-10000 2024-Feb-19

Scans Setup

	Area Scan	Zoom Scan
Grid Extents [mm]	120.0 x 200.0	30.0 x 30.0 x 30.0
Grid Steps [mm]	10.0 x 10.0	5.0 x 5.0 x 1.5
Sensor Surface [mm]	3.0	1.4
Graded Grid	N/A	Yes
M2/M1 [%]		78.5
Dist 3dB Peak [mm]		8.0

Measurement Results

	Area Scan	Zoom Scan
psSAR1g [W/Kg]	0.051	0.051
psSAR10g [W/Kg]	0.024	0.024
Power Drift [dB]	N/A	0.15

