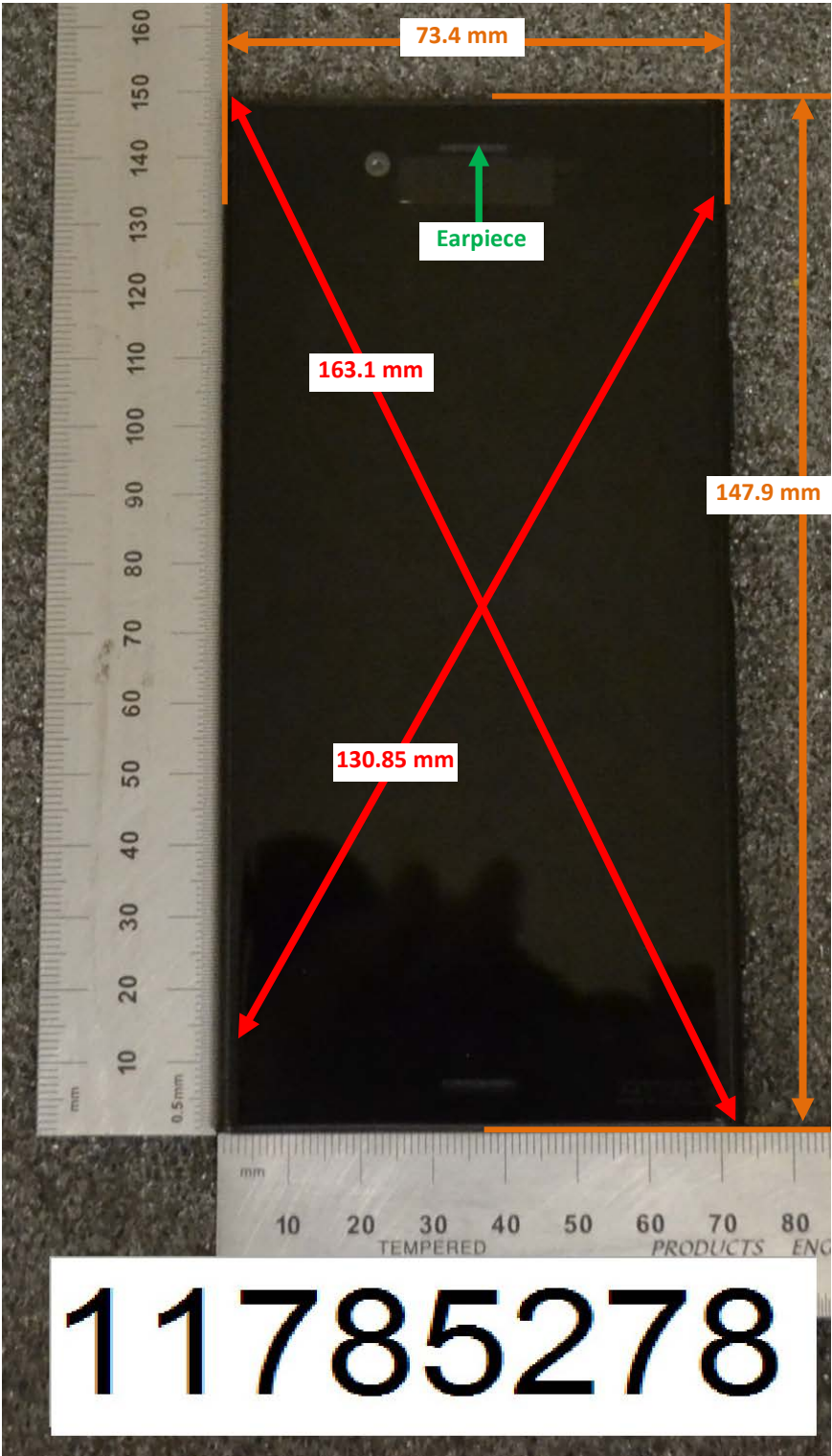


# DUT and SAR Set-up Photos

## Overall Dimensions



Front View of the DUT



Rear View of the DUT



## Setup Photos

Handset Vertical and Horizontal Reference Lines

Vertical  
Center Line

Horizontal  
Line

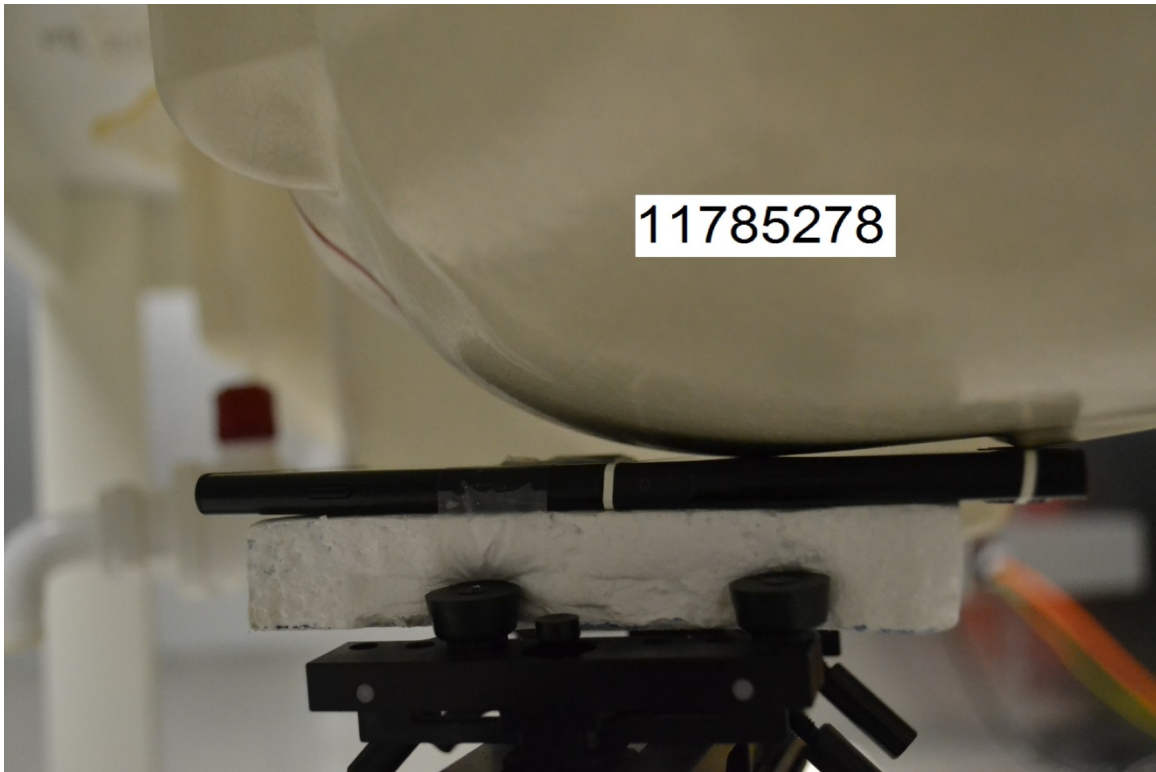


11785278

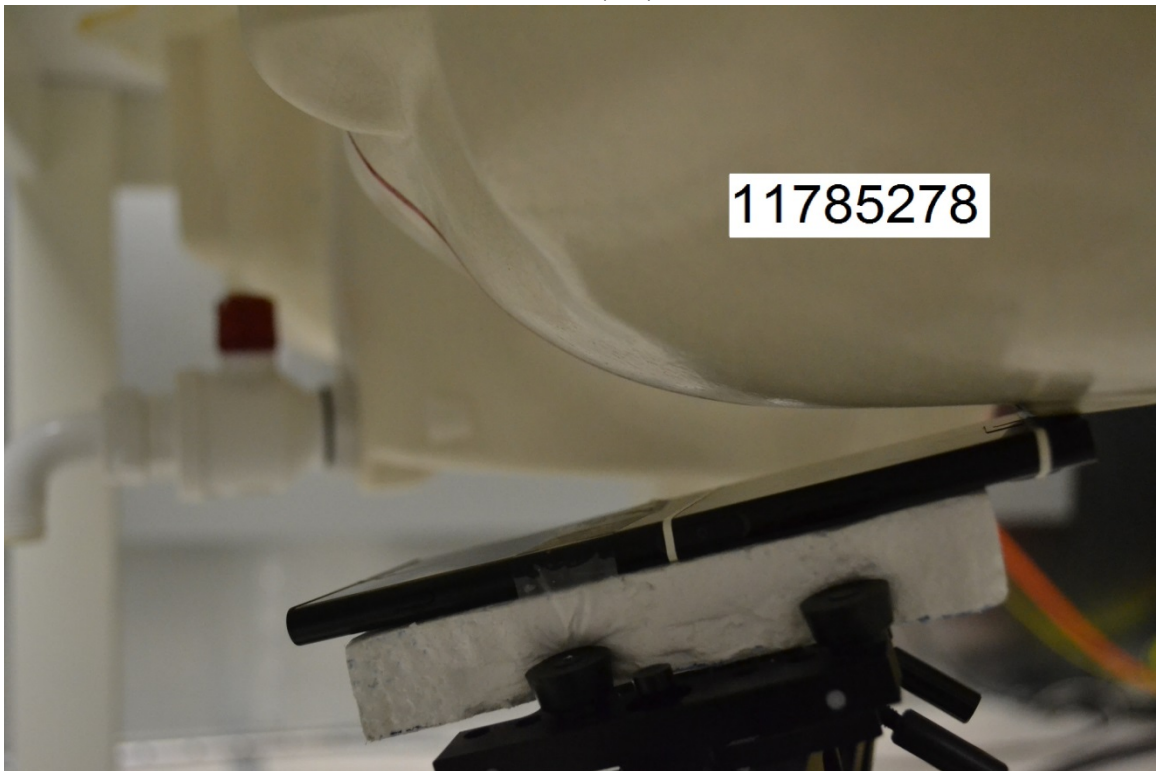


# Head Exposure Conditions

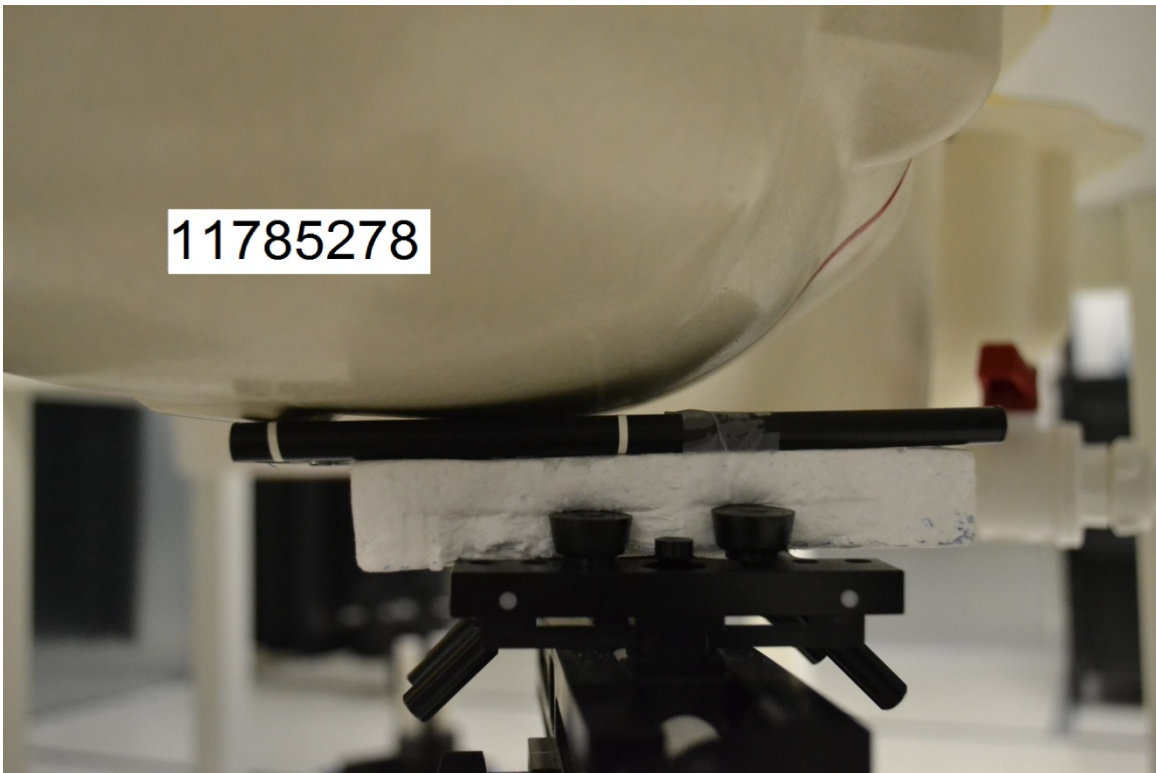
Left Touch



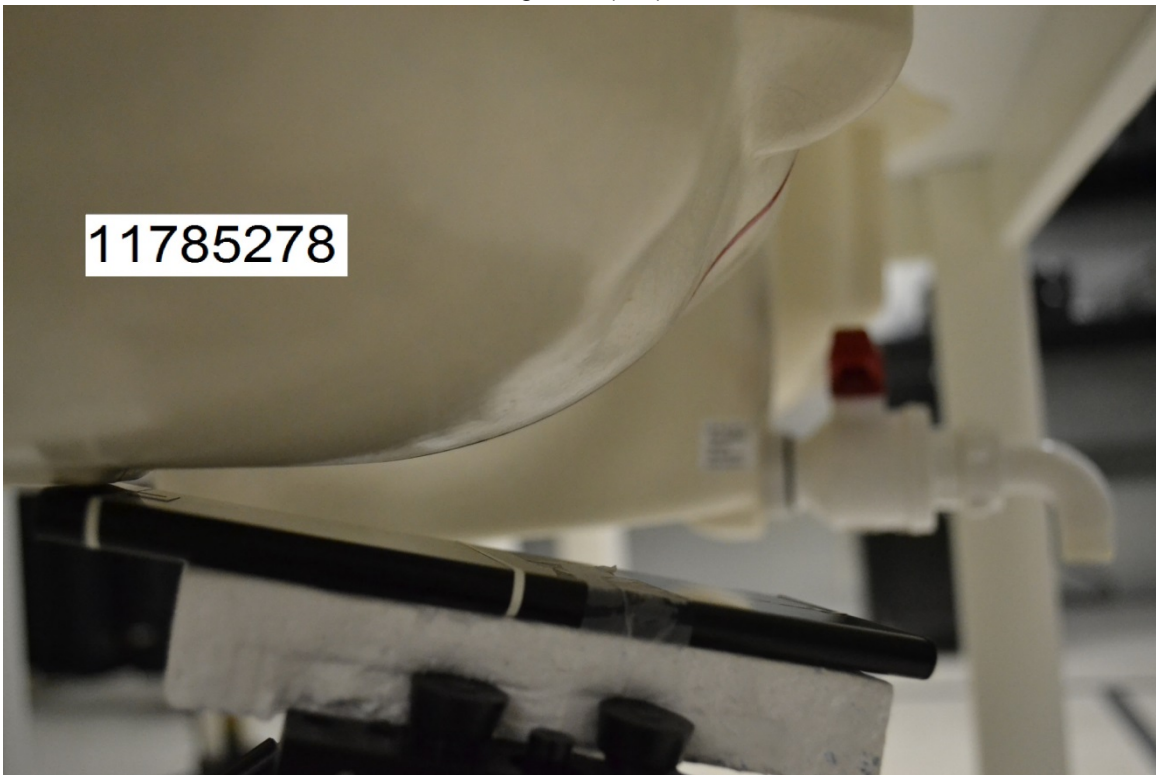
Left Tilt (15°)



Right Touch



Right Tilt (15°)

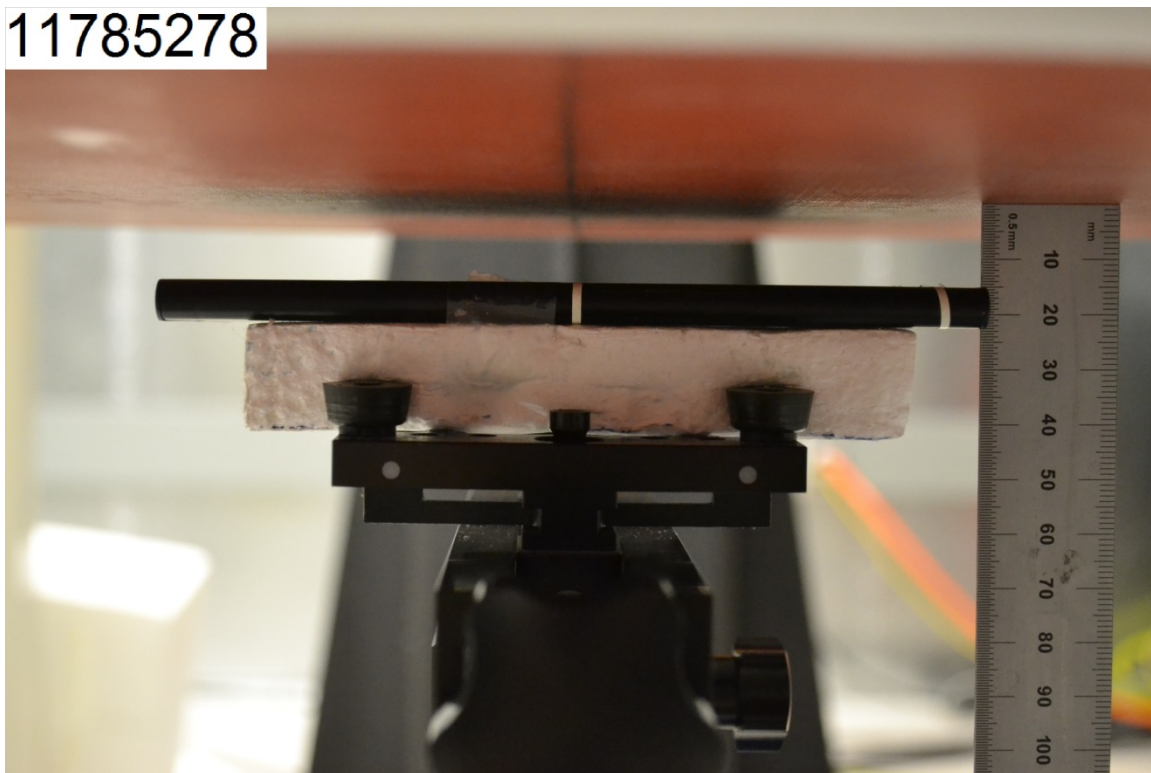




# Body-worn Accessory Exposure Conditions

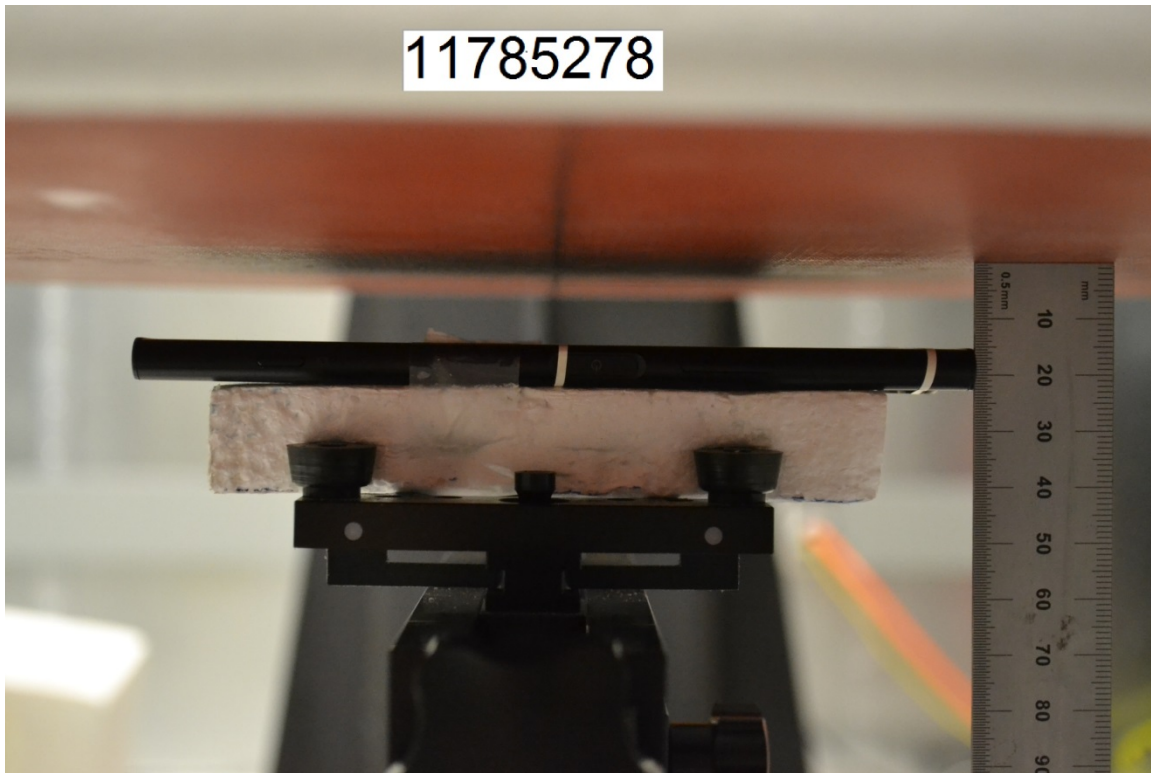
Rear @15mm

11785278



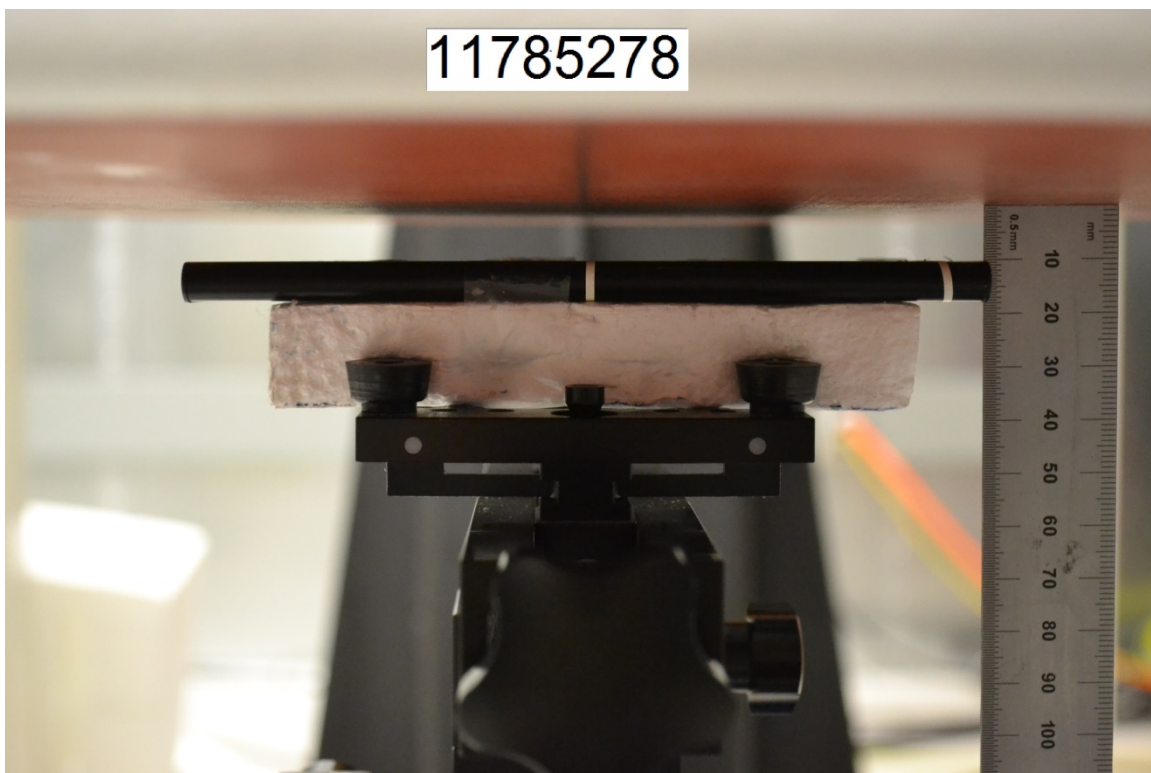
Front @15mm

11785278

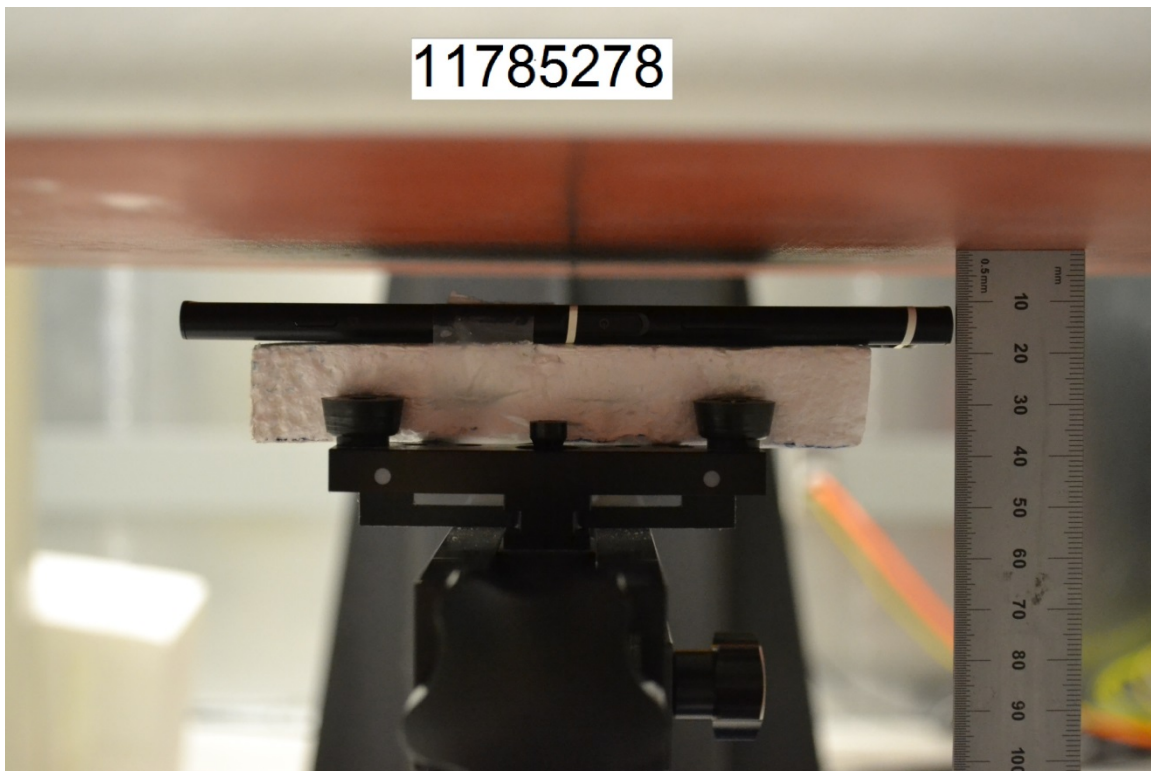


# Hotspot Exposure Conditions

Rear @10mm



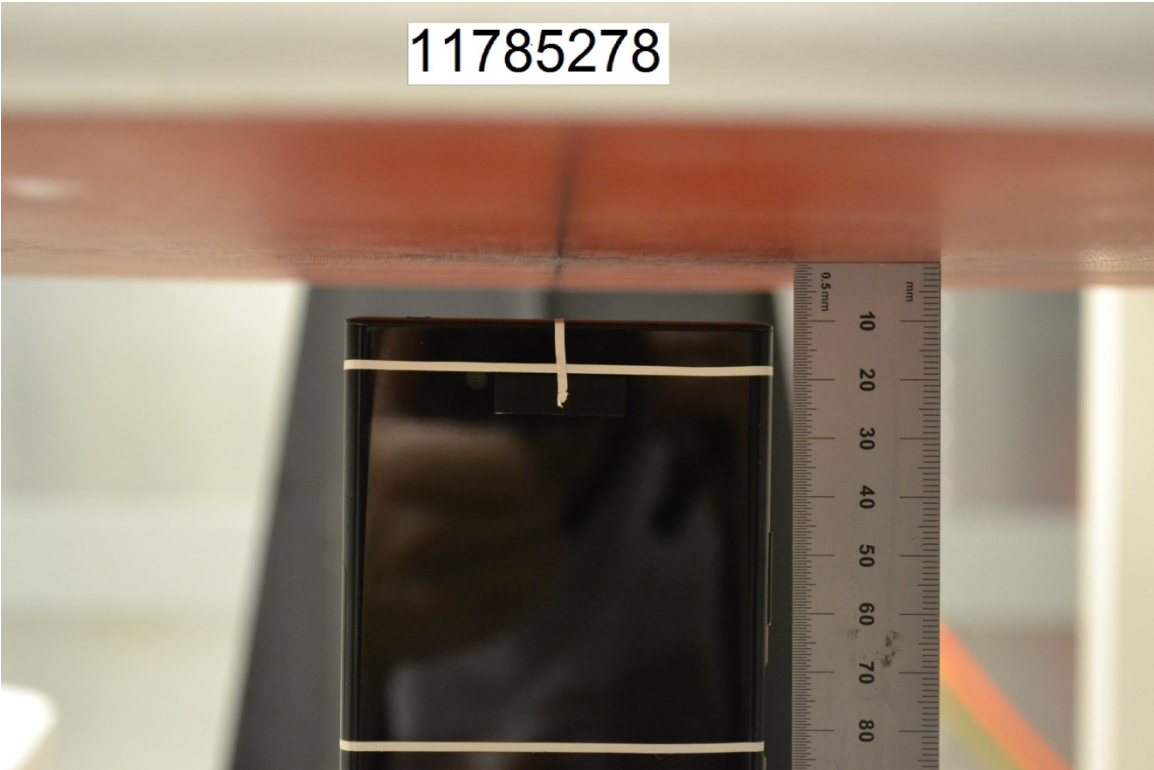
Front @10mm





Edge 1 @10mm

11785278



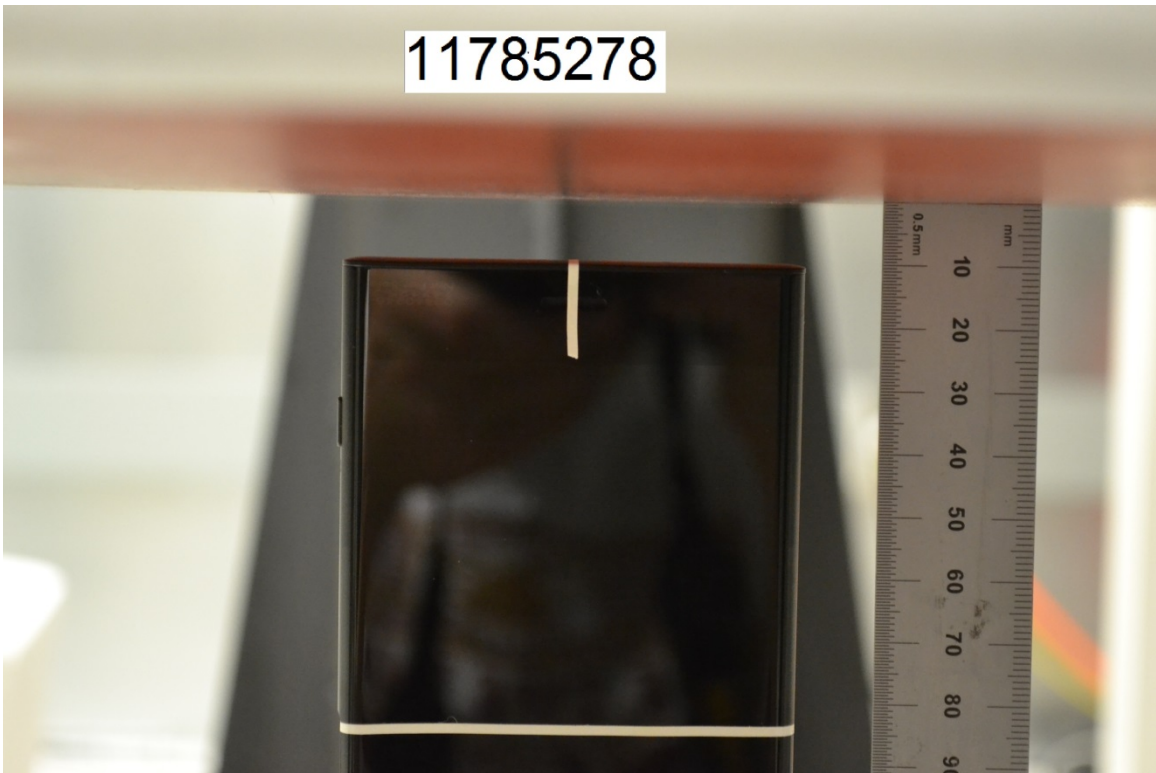
Edge 2 @10mm

11785278

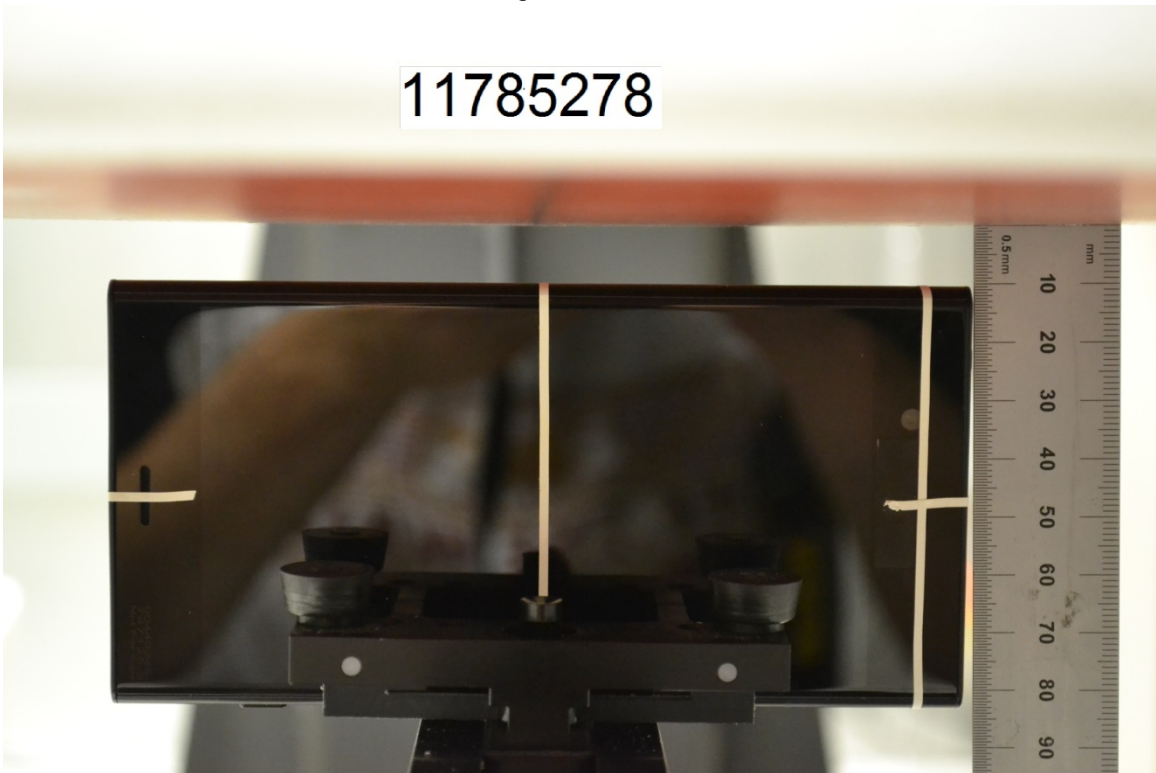




Edge 3 @10mm



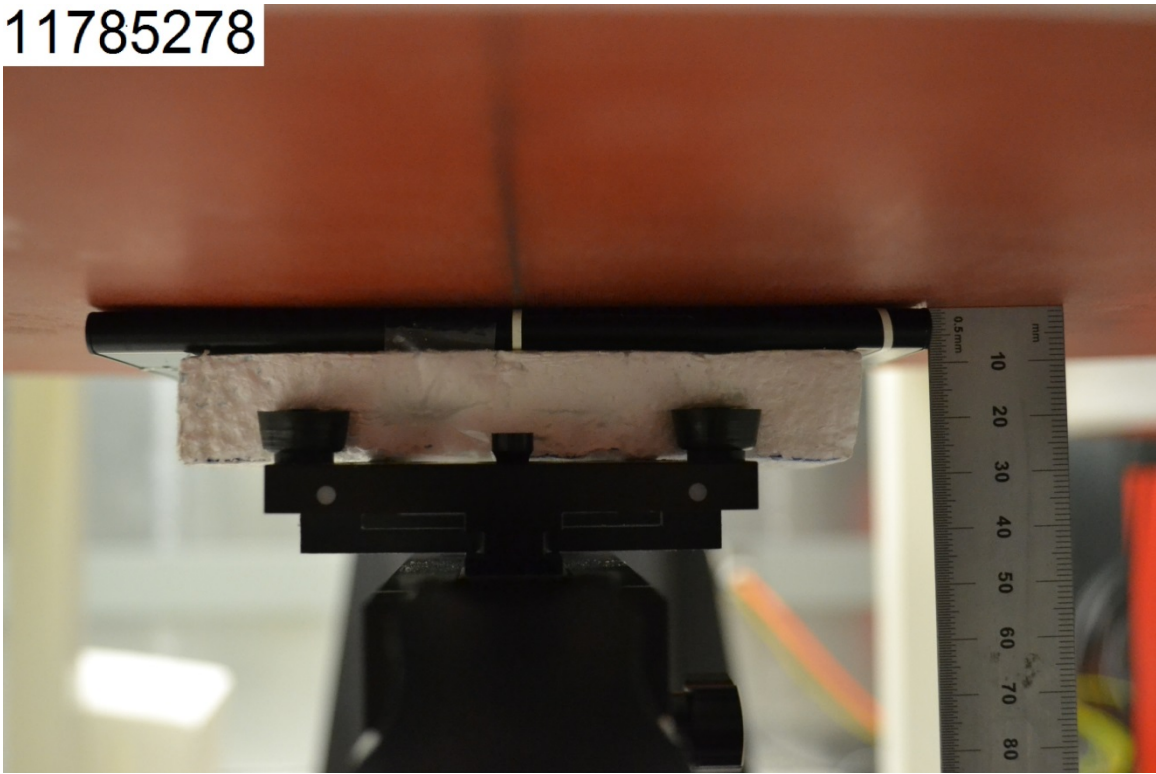
Edge 4 @10mm



# Extremity Exposure Conditions

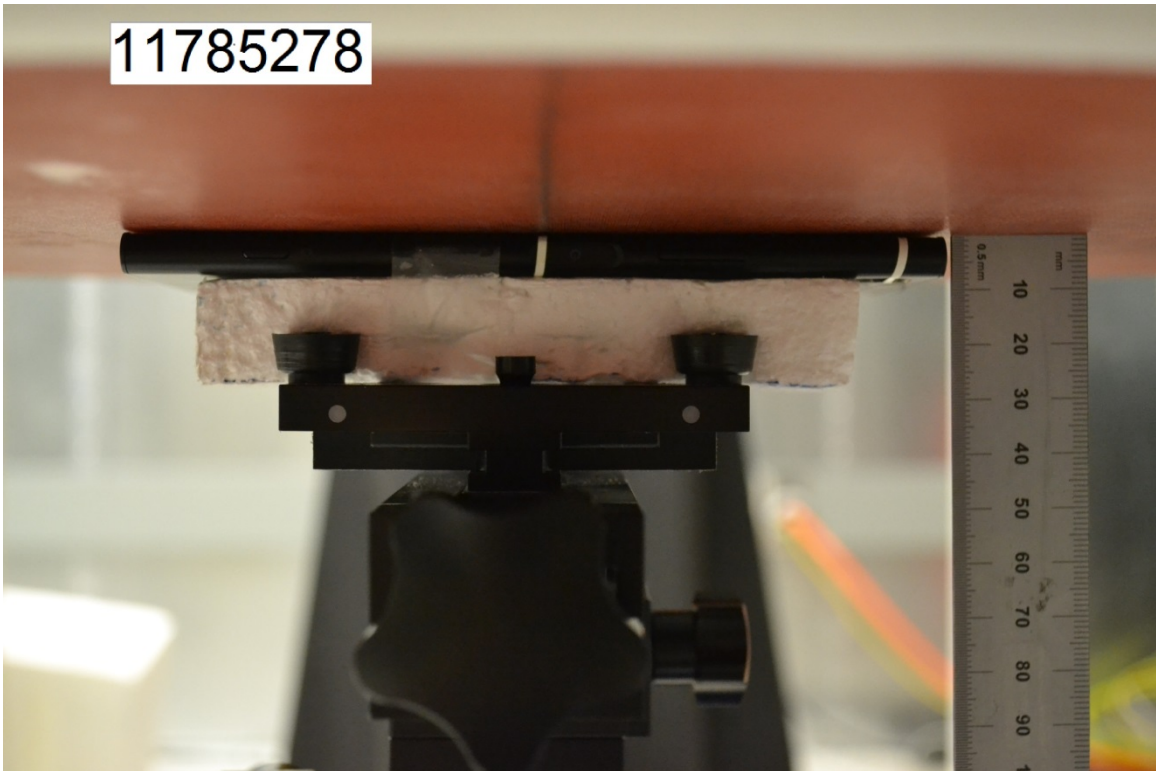
Rear @0mm

11785278

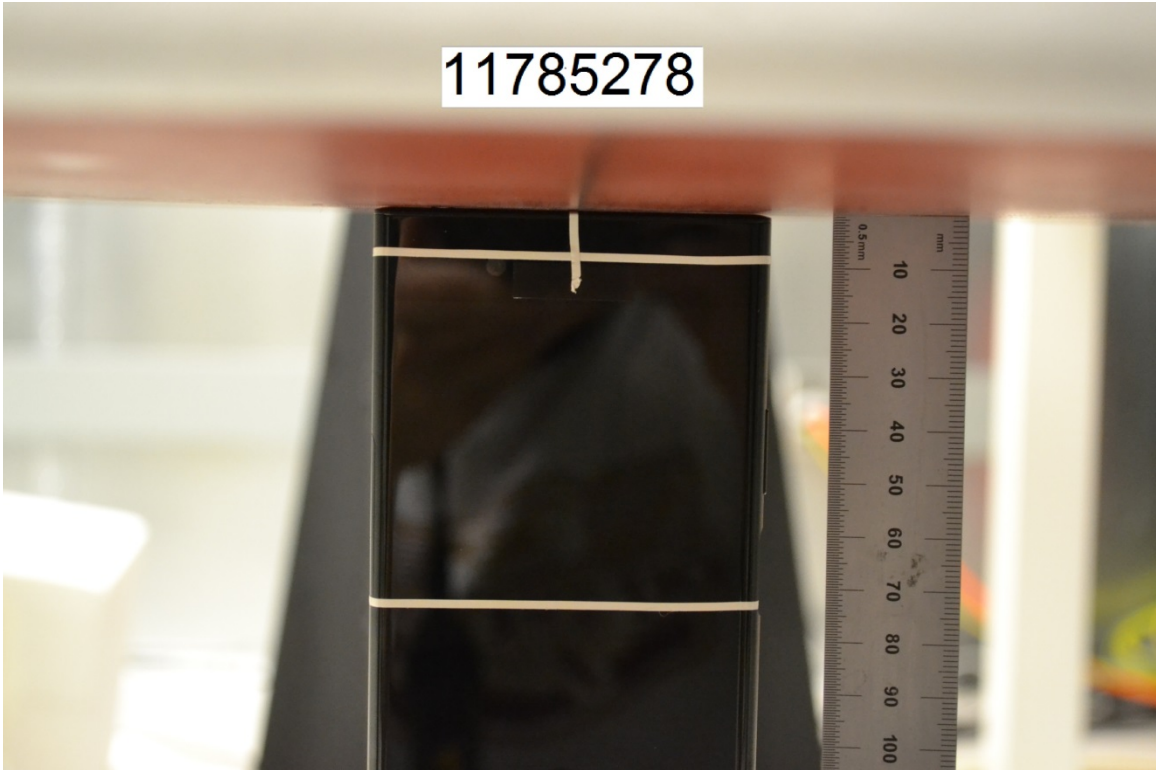


Front @0mm

11785278



Edge 1 @0mm

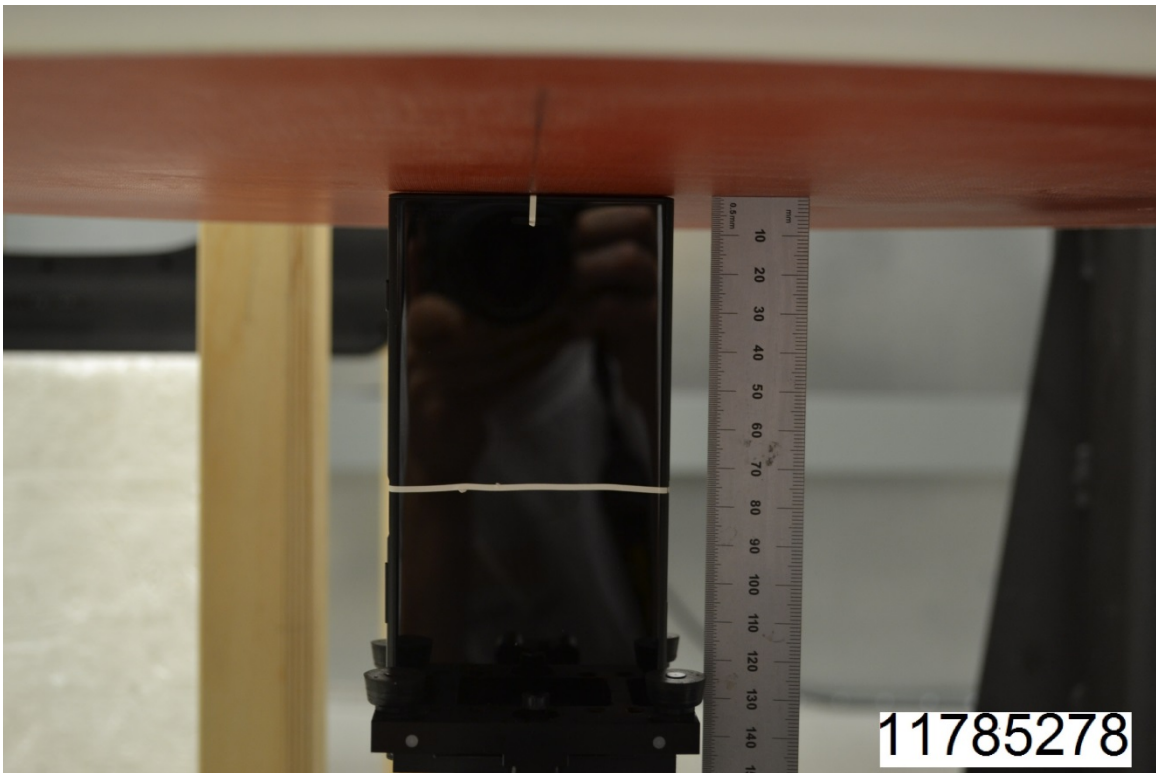


Edge 2 @0mm

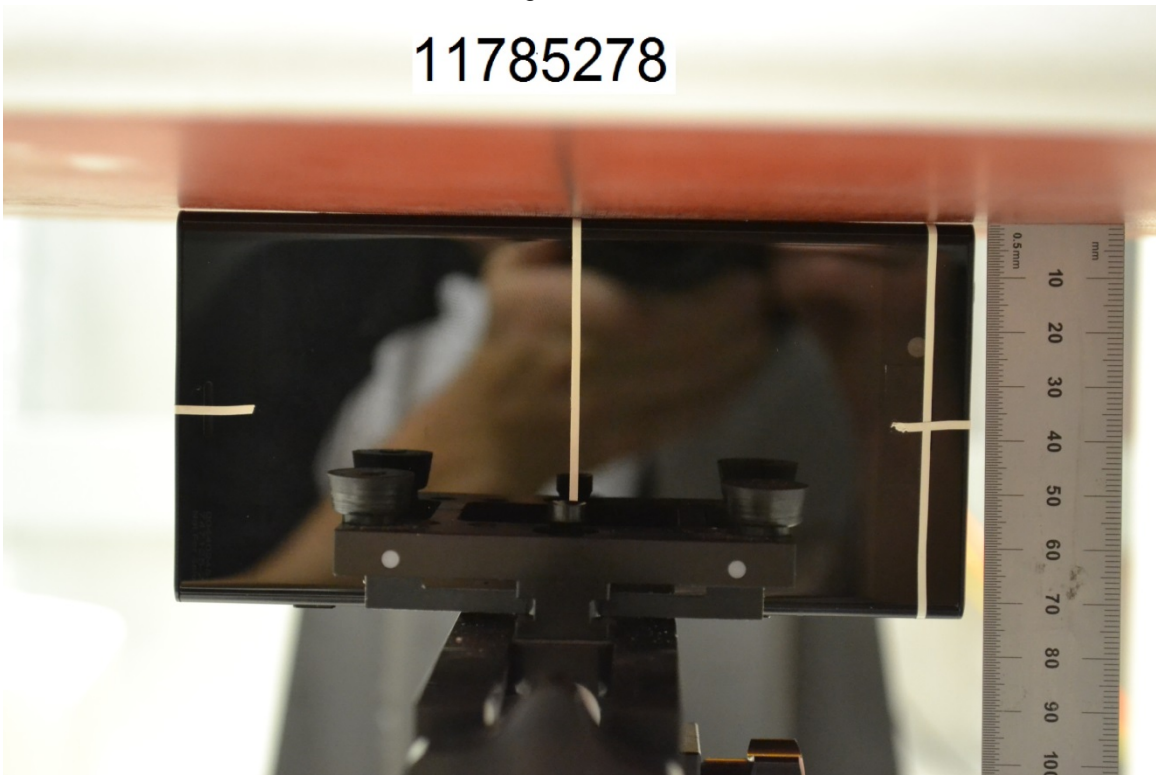




Edge 3 @0mm



Edge 4 @0mm



# Antenna Dimensions & Separation Distances

