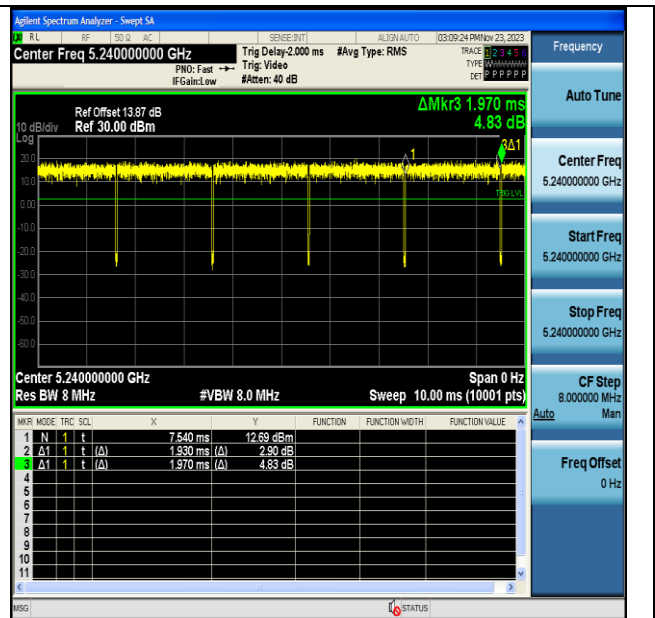
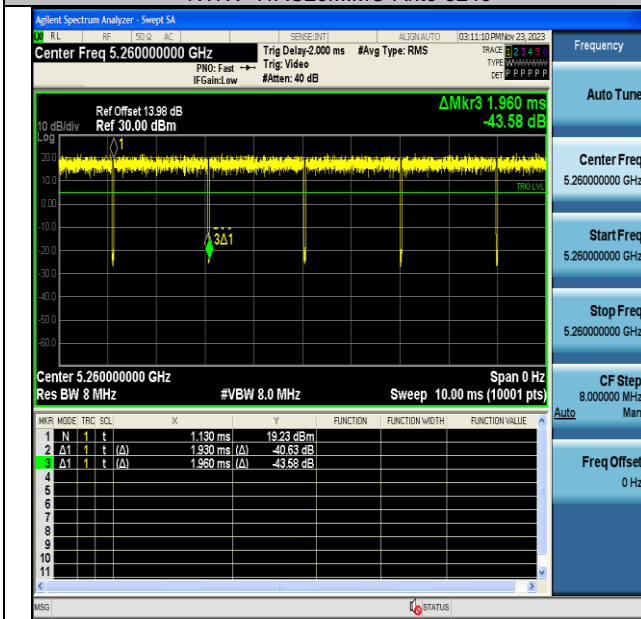


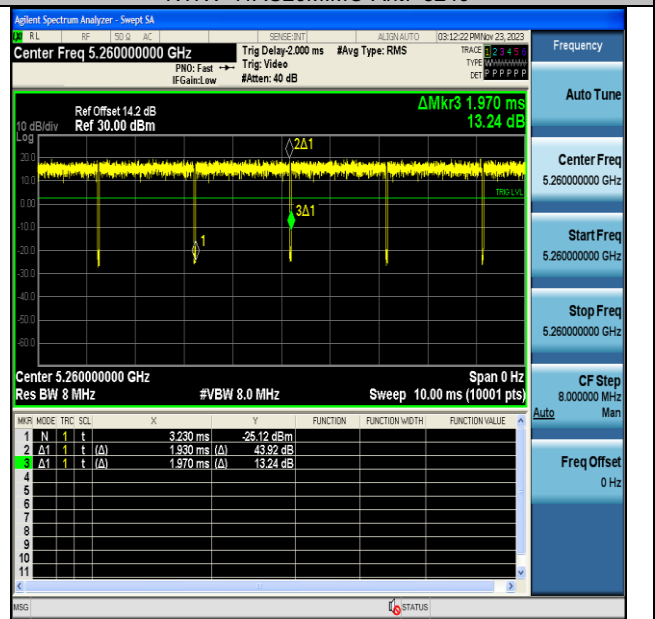
NTNV-11AC20MIMO-Ant6-5240



NTNV-11AC20MIMO-Ant7-5240



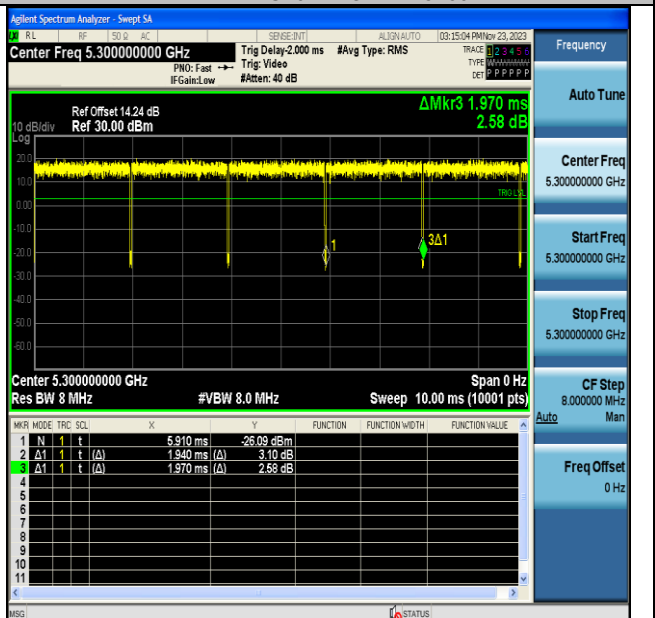
NTNV-11AC20MIMO-Ant6-5260



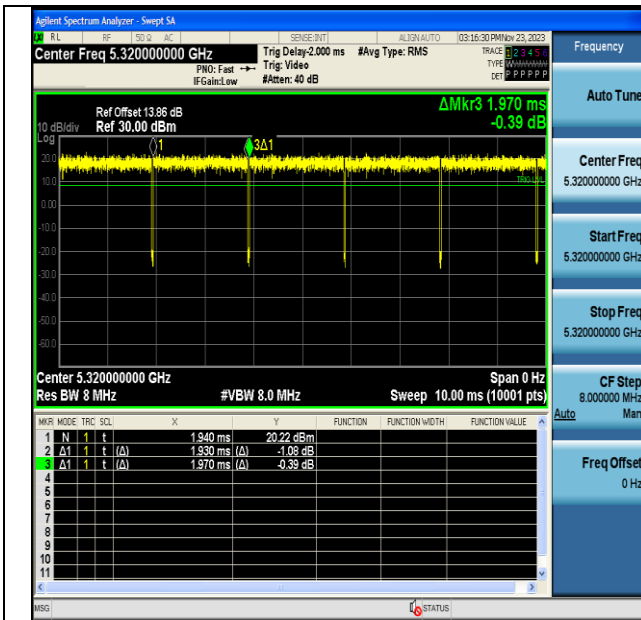
NTNV-11AC20MIMO-Ant7-5260



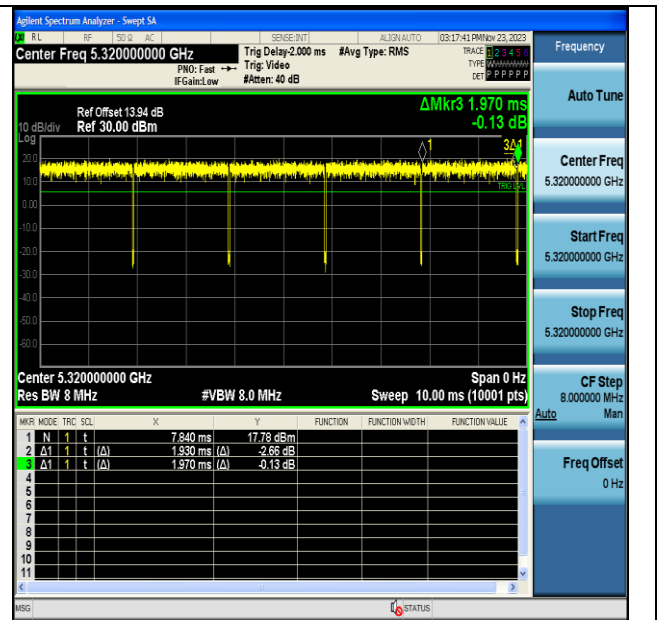
NTNV-11AC20MIMO-Ant6-5300



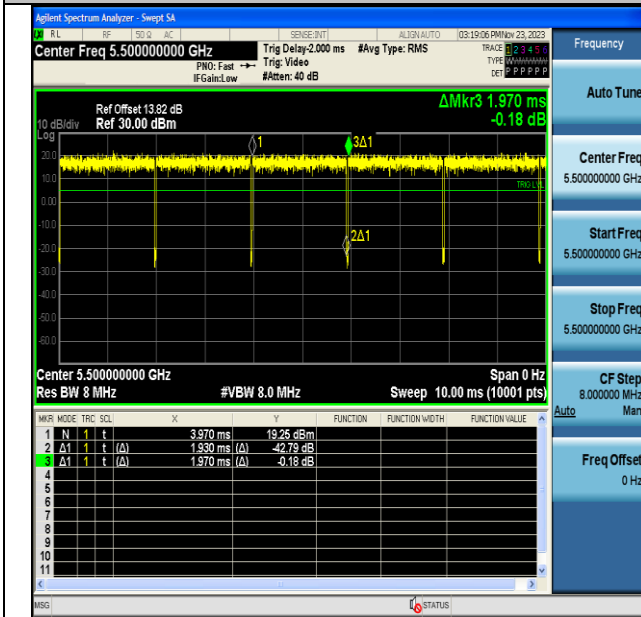
NTNV-11AC20MIMO-Ant7-5300



NTNV-11AC20MIMO-Ant6-5320



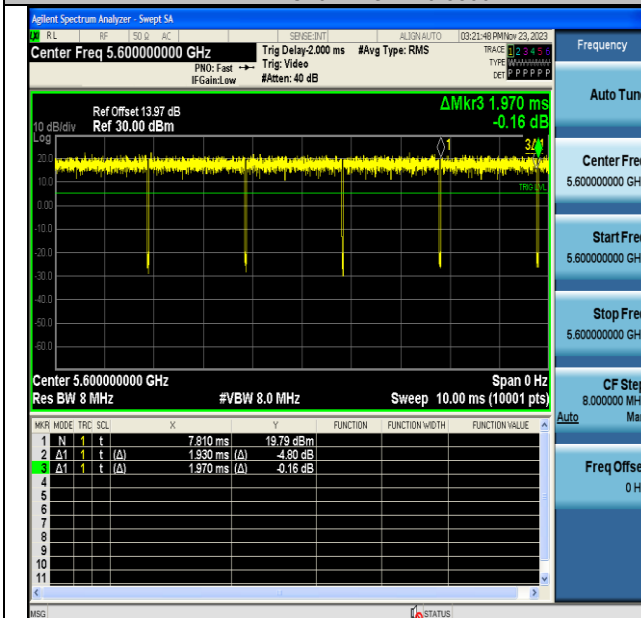
NTNV-11AC20MIMO-Ant7-5320



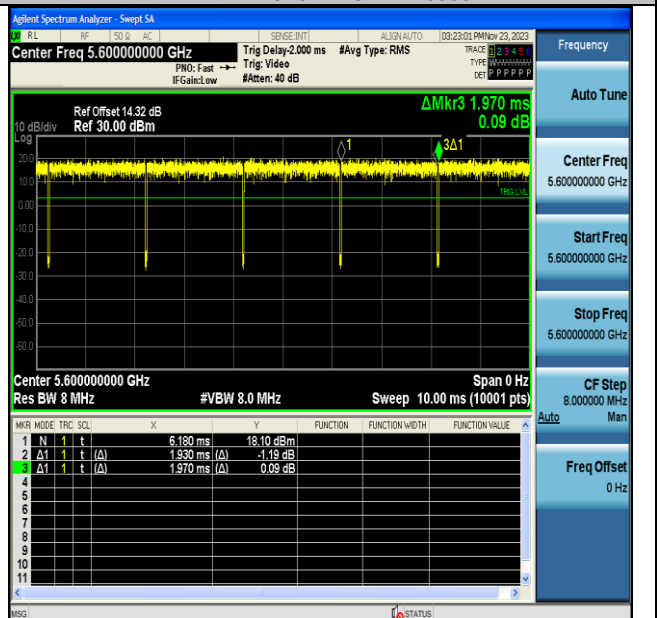
NTNV-11AC20MIMO-Ant6-5500



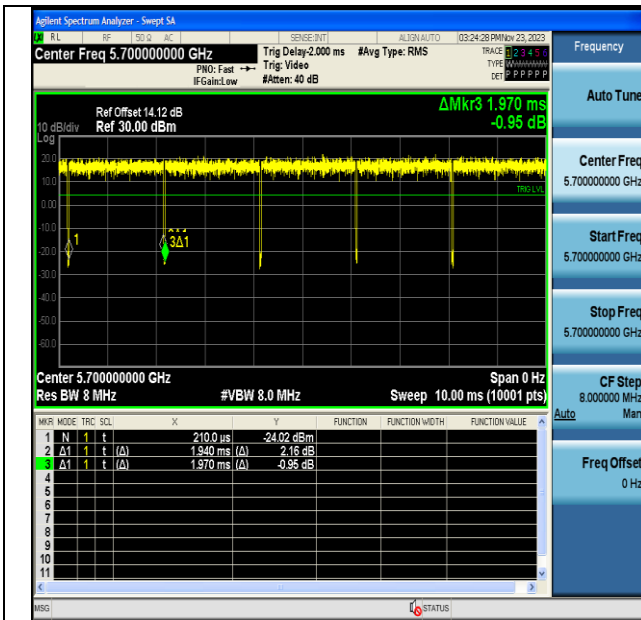
NTNV-11AC20MIMO-Ant7-5500



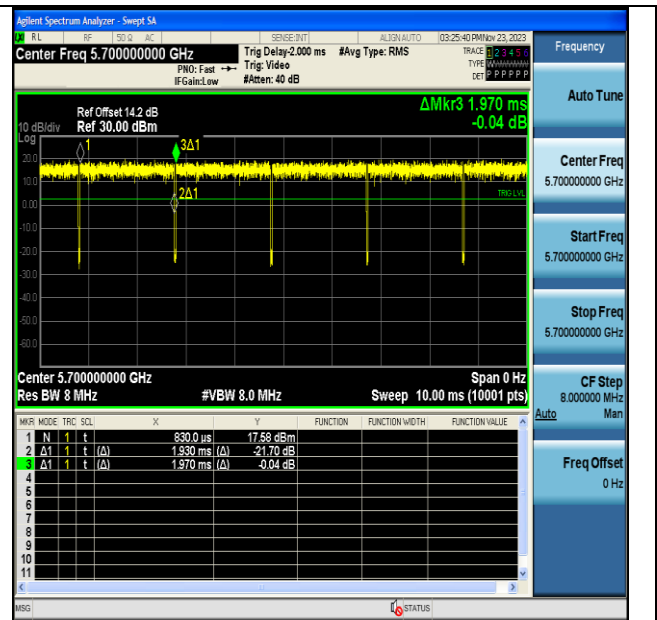
NTNV-11AC20MIMO-Ant6-5600



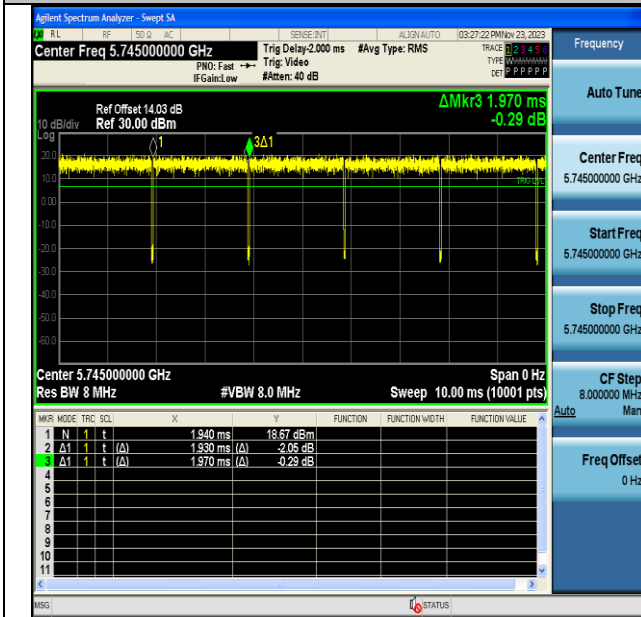
NTNV-11AC20MIMO-Ant7-5600



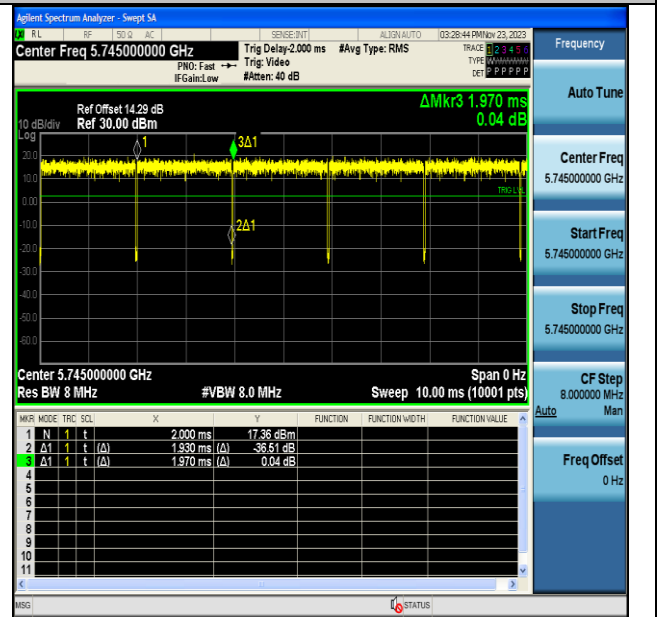
NTNV-11AC20MIMO-Ant6-5700



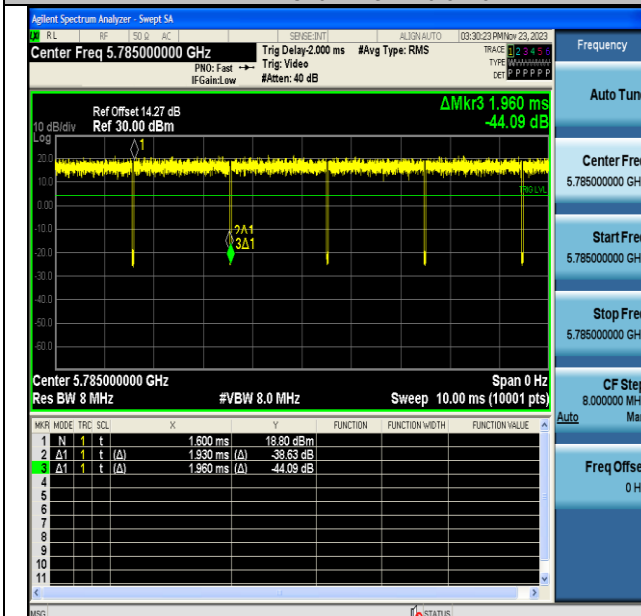
NTNV-11AC20MIMO-Ant7-5700



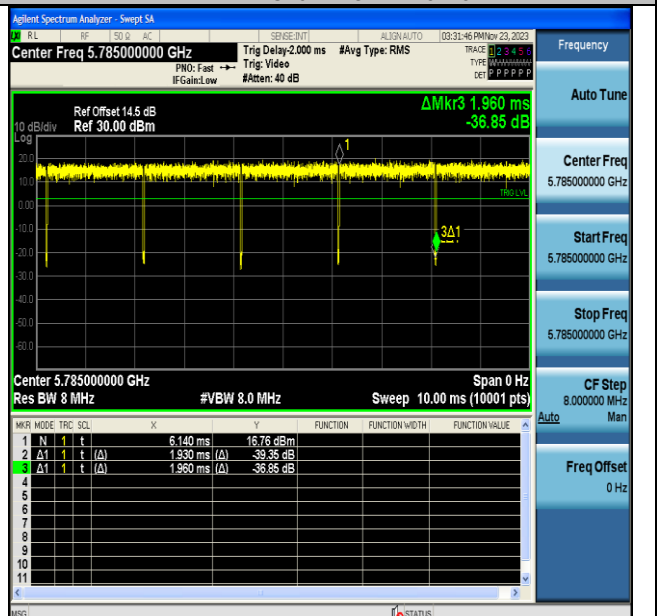
NTNV-11AC20MIMO-Ant6-5745



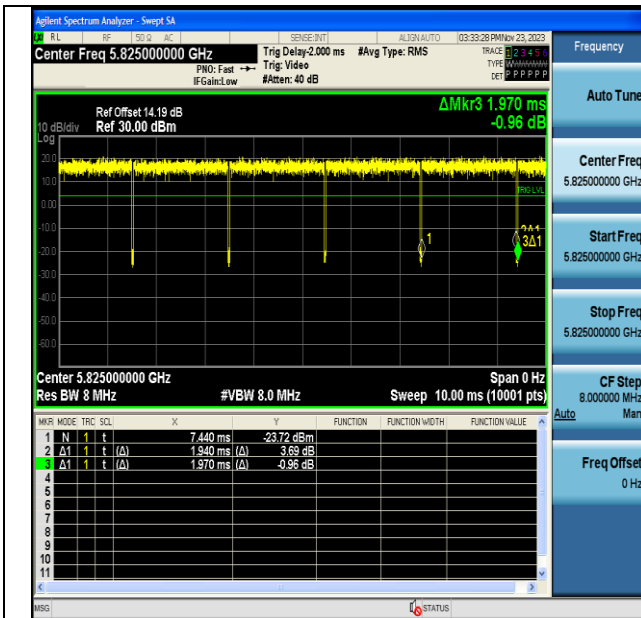
NTNV-11AC20MIMO-Ant7-5745



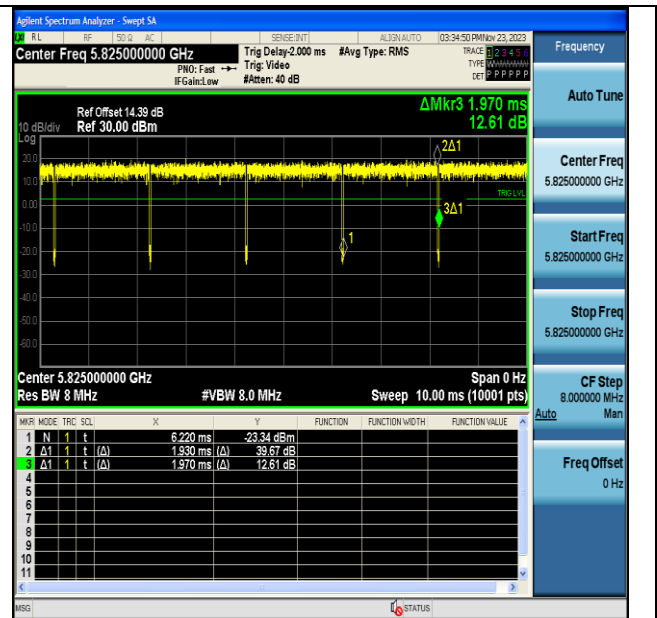
NTNV-11AC20MIMO-Ant6-5785



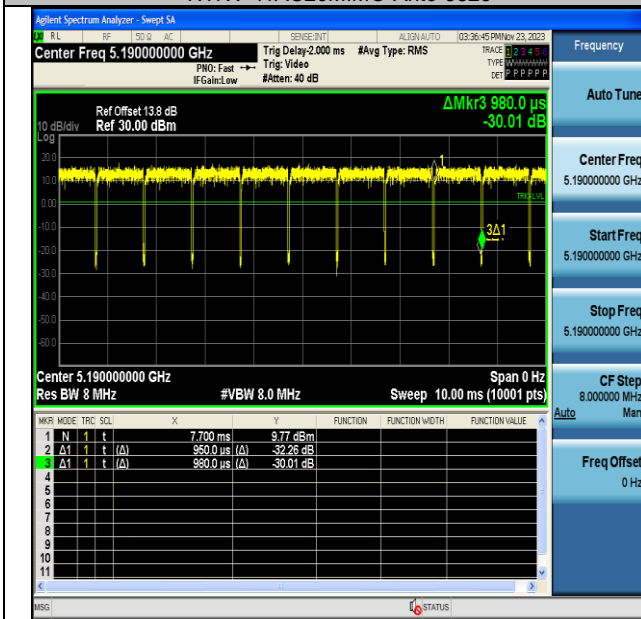
NTNV-11AC20MIMO-Ant7-5785



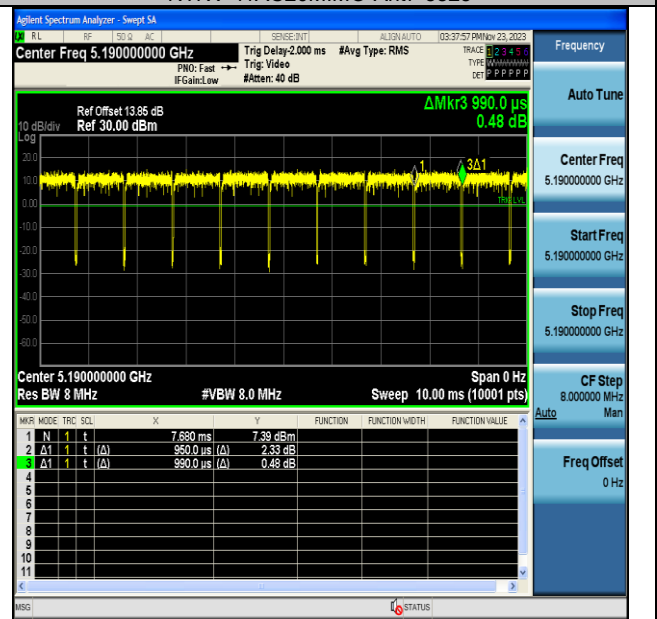
NTNV-11AC20MIMO-Ant6-5825



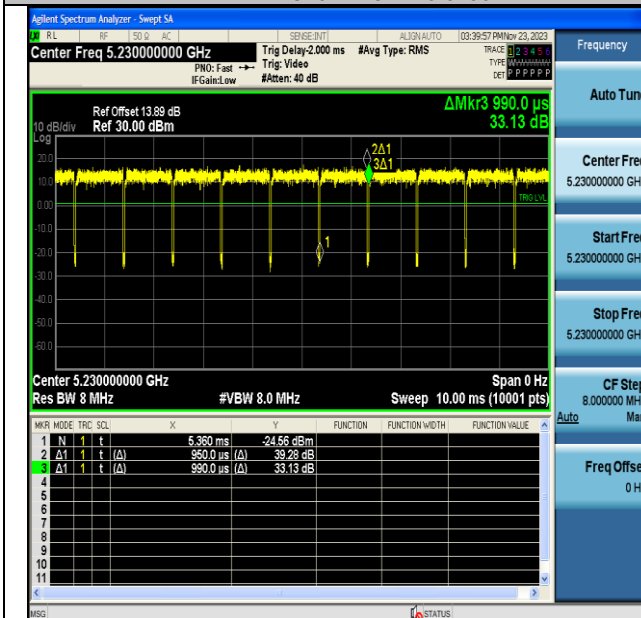
NTNV-11AC20MIMO-Ant7-5825



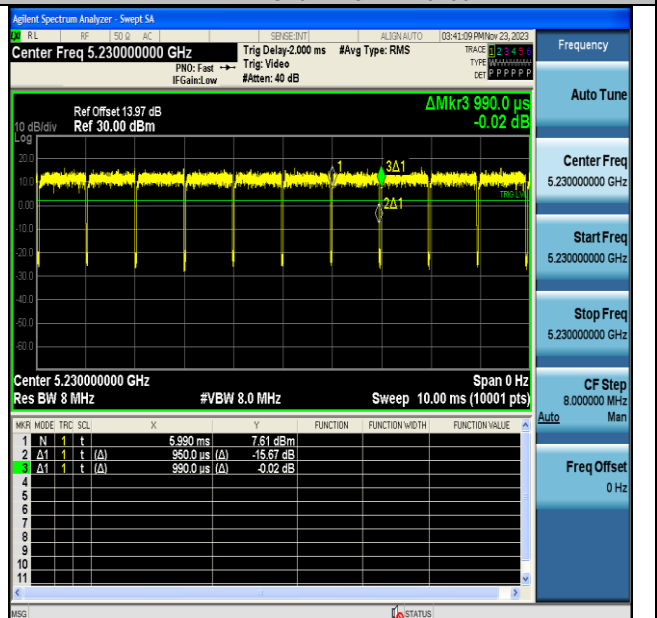
NTNV-11AC20MIMO-Ant6-5825



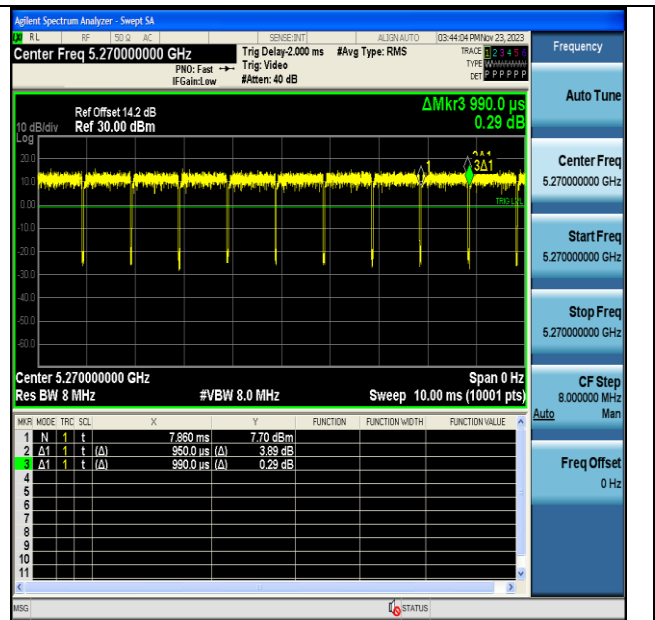
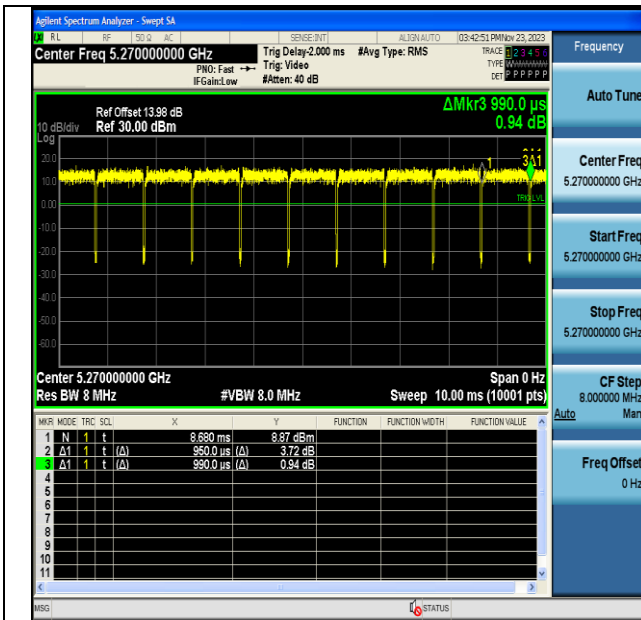
NTNV-11AC20MIMO-Ant7-5825



NTNV-11AC40MIMO-Ant6-5190

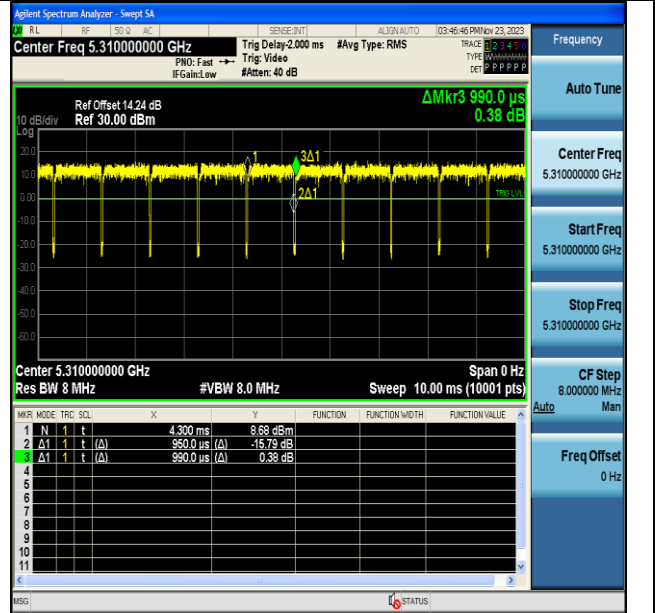
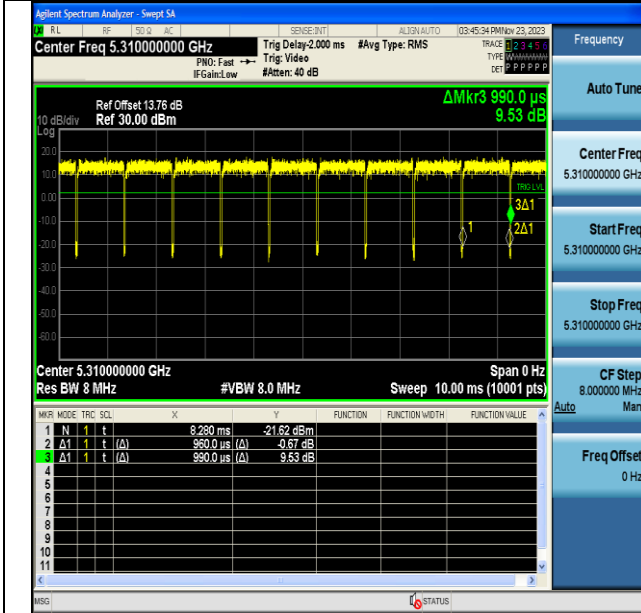


NTNV-11AC40MIMO-Ant7-5190



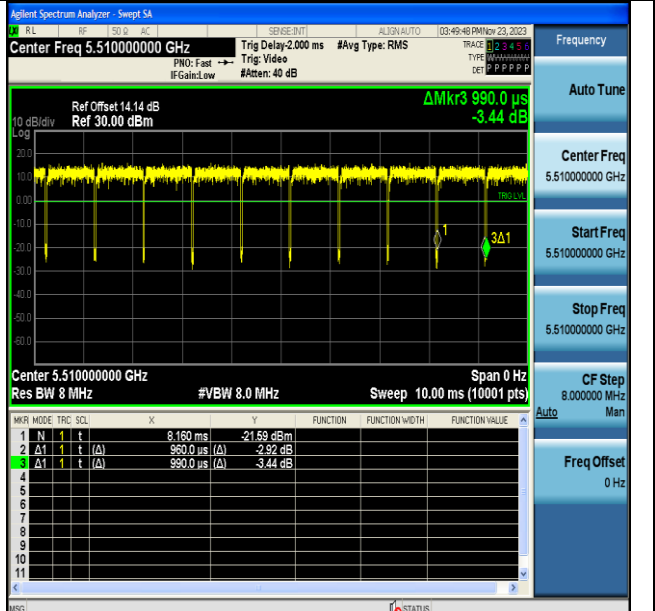
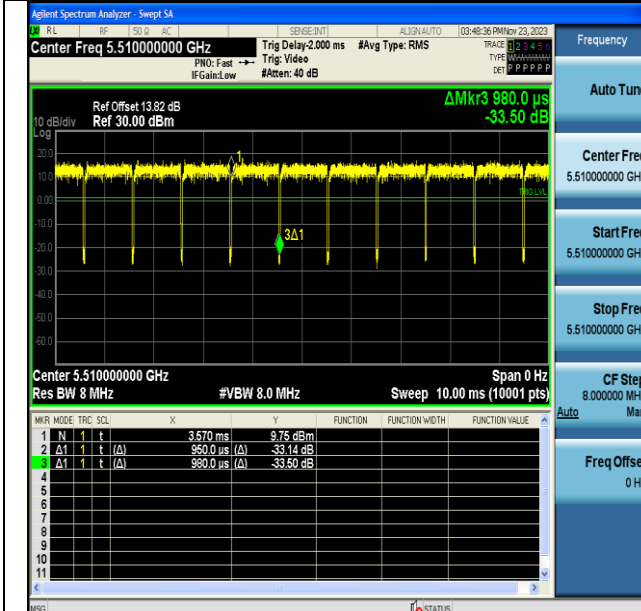
NTNV-11AC40MIMO-Ant6-5270

NTNV-11AC40MIMO-Ant7-5270



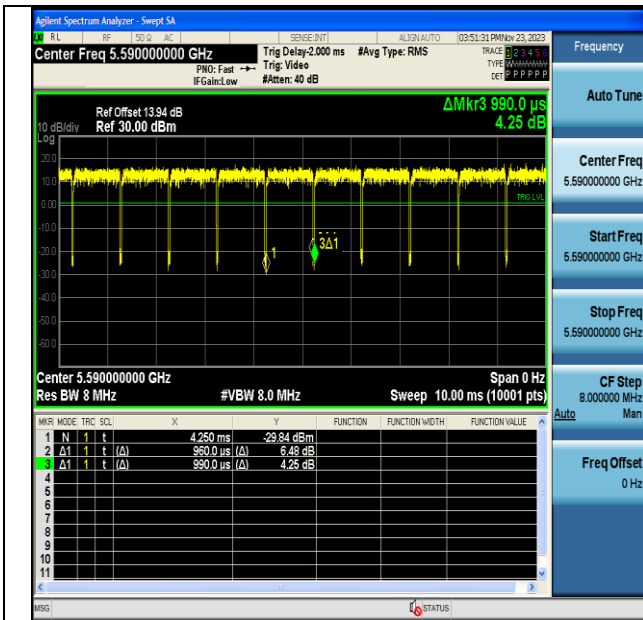
NTNV-11AC40MIMO-Ant6-5310

NTNV-11AC40MIMO-Ant7-5310

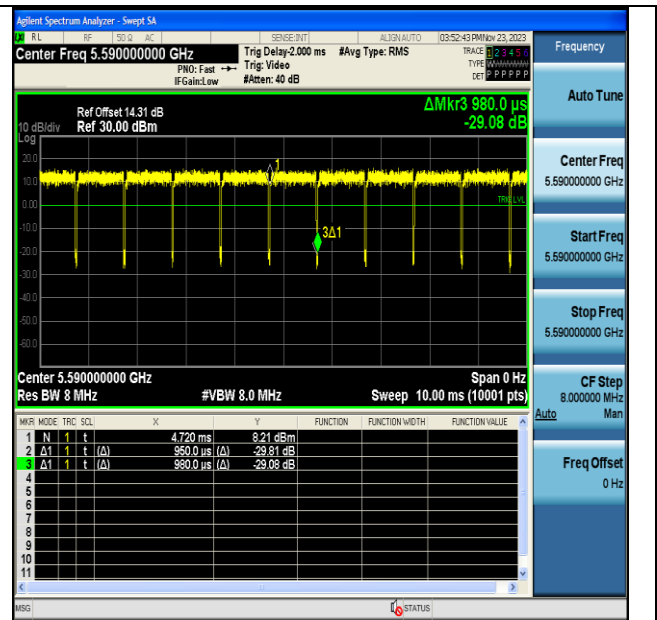


NTNV-11AC40MIMO-Ant6-5510

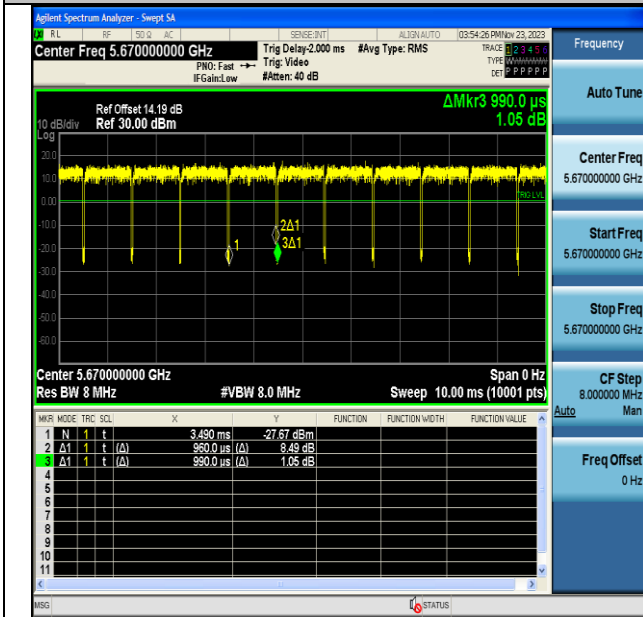
NTNV-11AC40MIMO-Ant7-5510



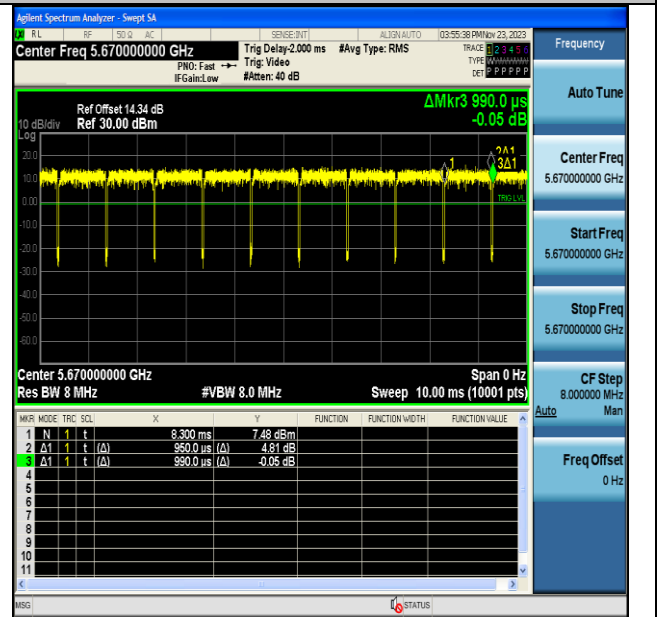
NTNV-11AC40MIMO-Ant6-5590



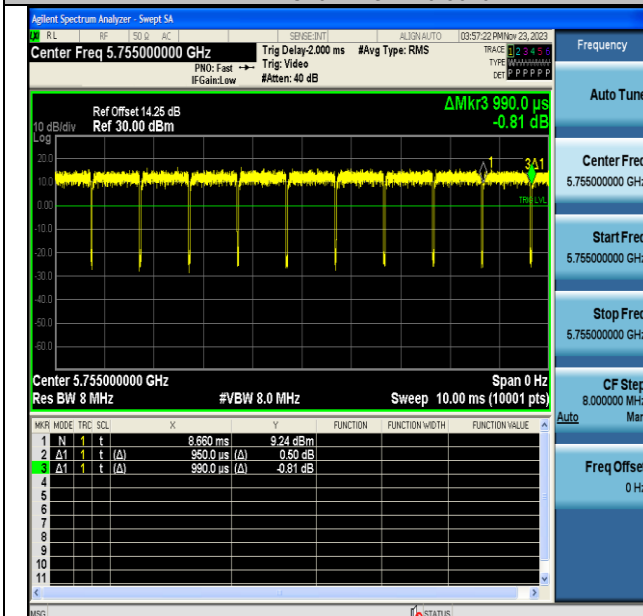
NTNV-11AC40MIMO-Ant7-5590



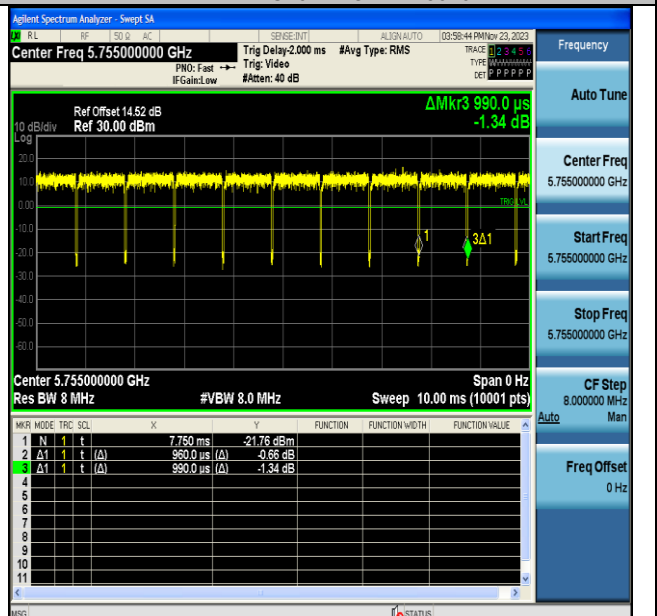
NTNV-11AC40MIMO-Ant6-5670



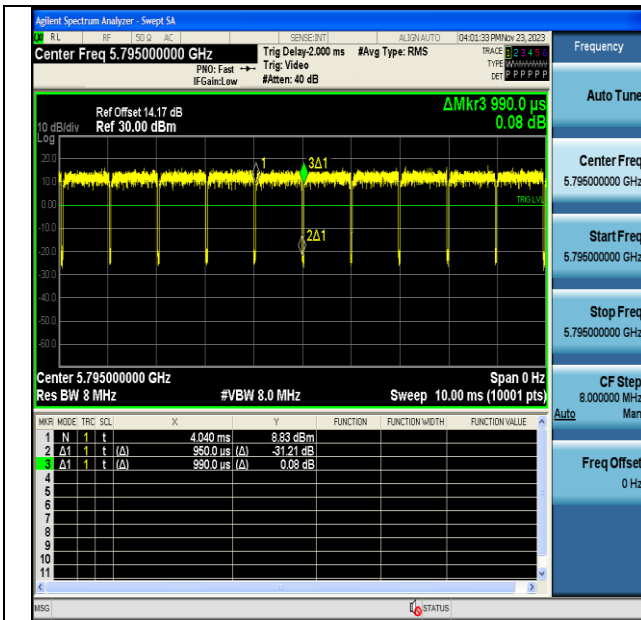
NTNV-11AC40MIMO-Ant7-5670



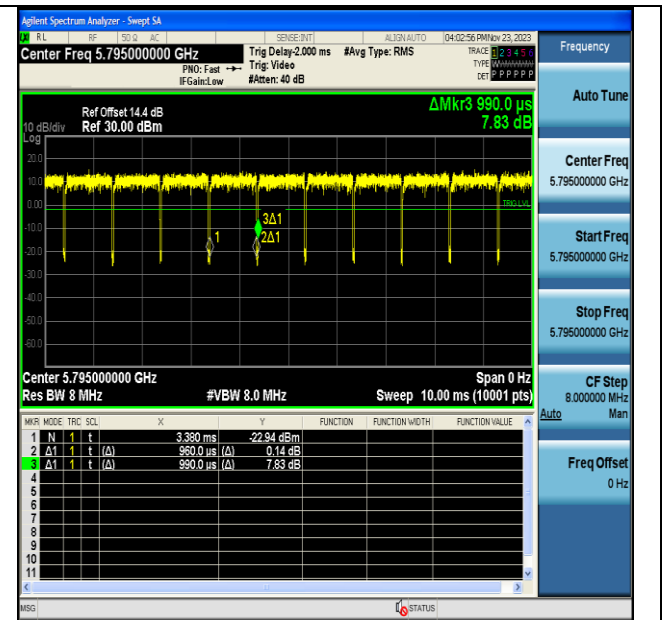
NTNV-11AC40MIMO-Ant6-5755



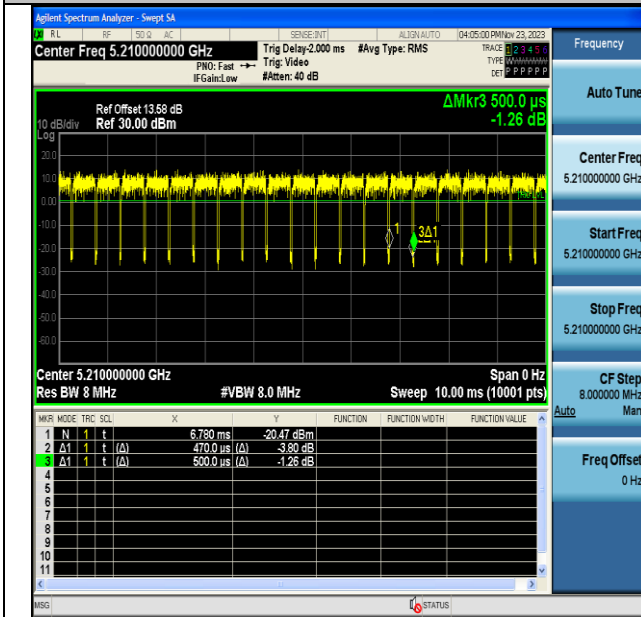
NTNV-11AC40MIMO-Ant7-5755



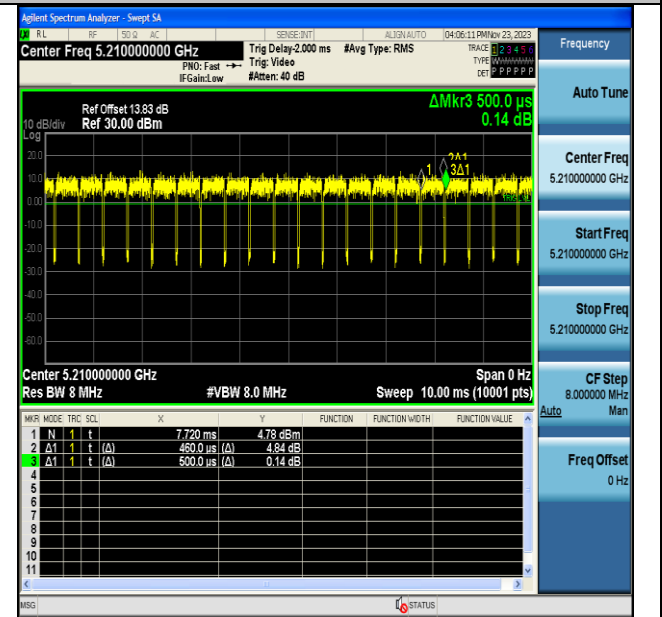
NTNV-11AC40MIMO-Ant6-5795



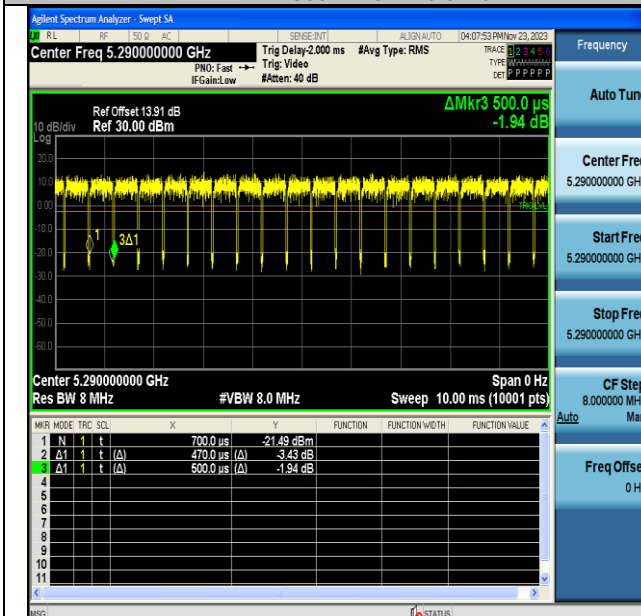
NTNV-11AC40MIMO-Ant7-5795



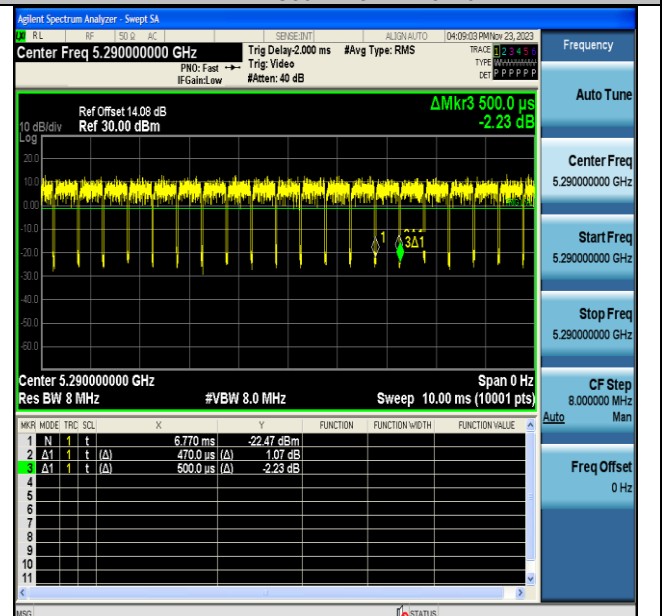
NTNV-11AC80MIMO-Ant6-5210



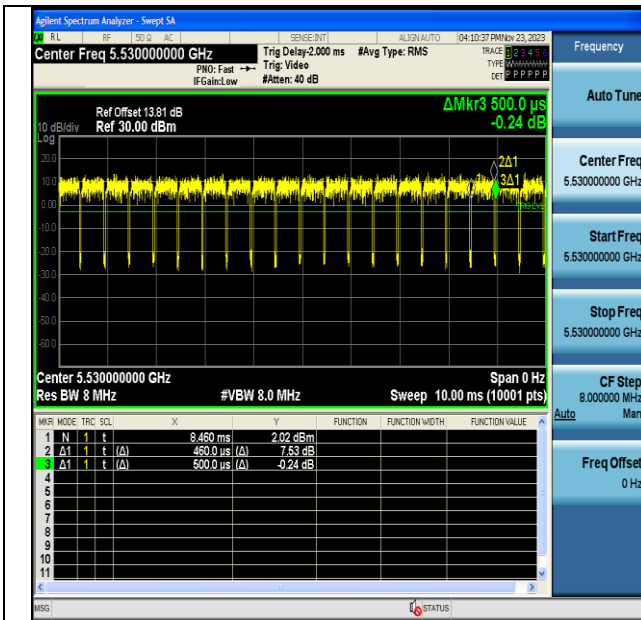
NTNV-11AC80MIMO-Ant7-5210



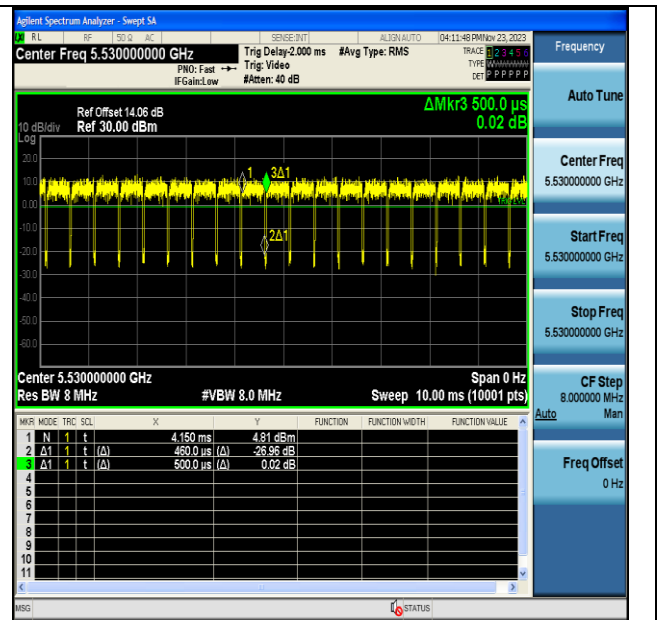
NTNV-11AC80MIMO-Ant6-5290



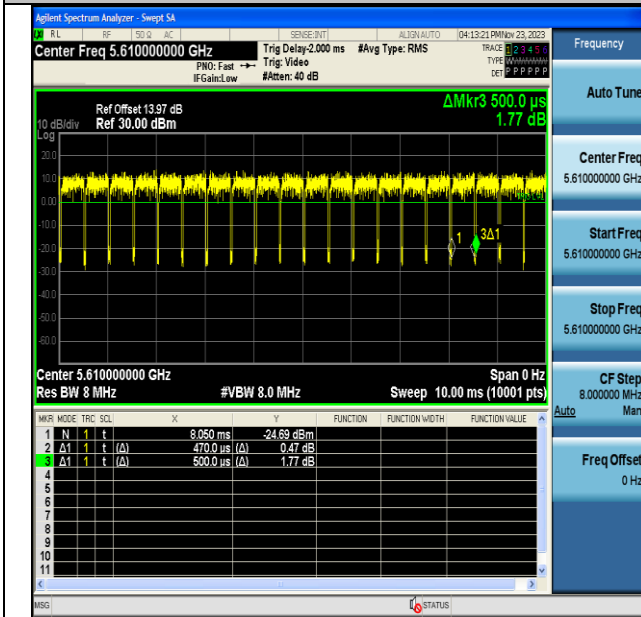
NTNV-11AC80MIMO-Ant7-5290



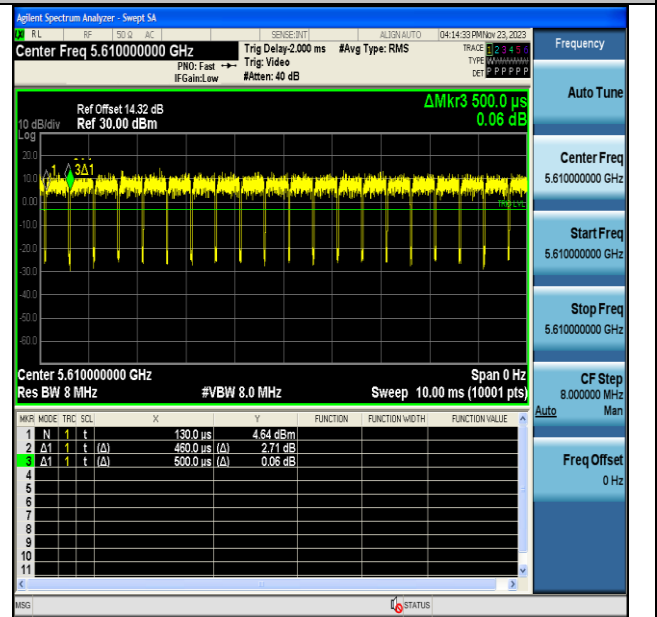
NTNV-11AC80MIMO-Ant6-5530



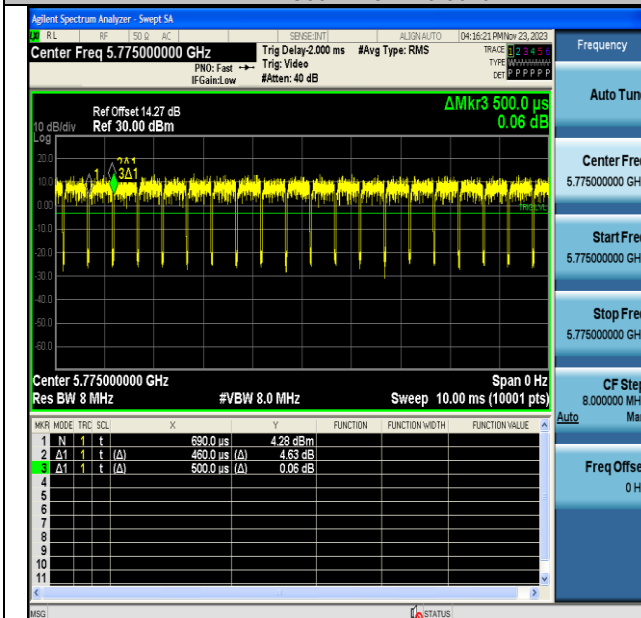
NTNV-11AC80MIMO-Ant7-5530



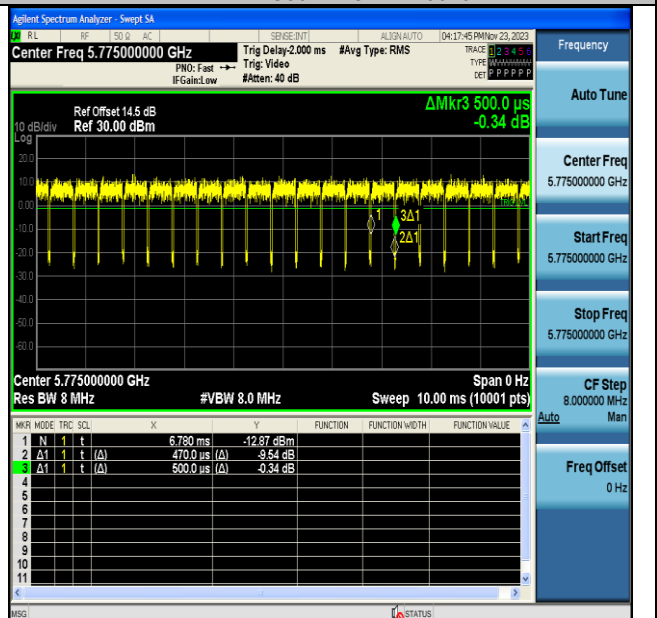
NTNV-11AC80MIMO-Ant6-5610



NTNV-11AC80MIMO-Ant7-5610

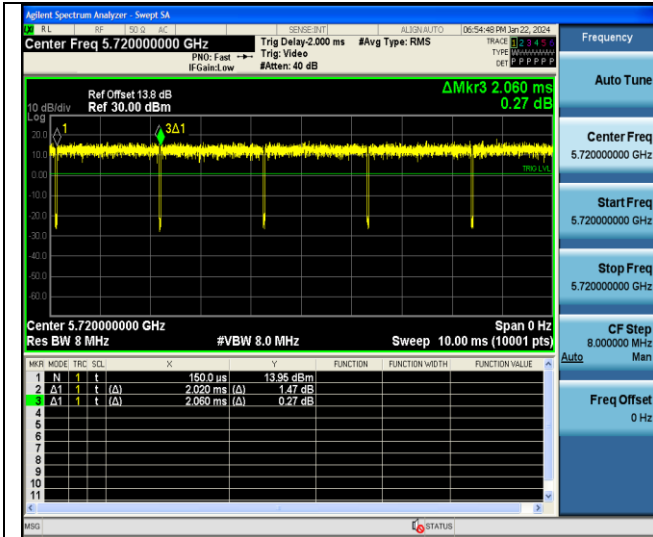


NTNV-11AC80MIMO-Ant6-5775

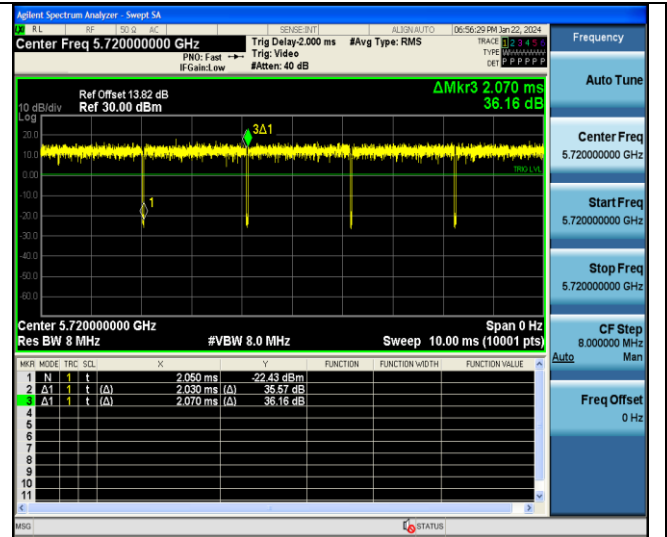


NTNV-11AC80MIMO-Ant7-5775

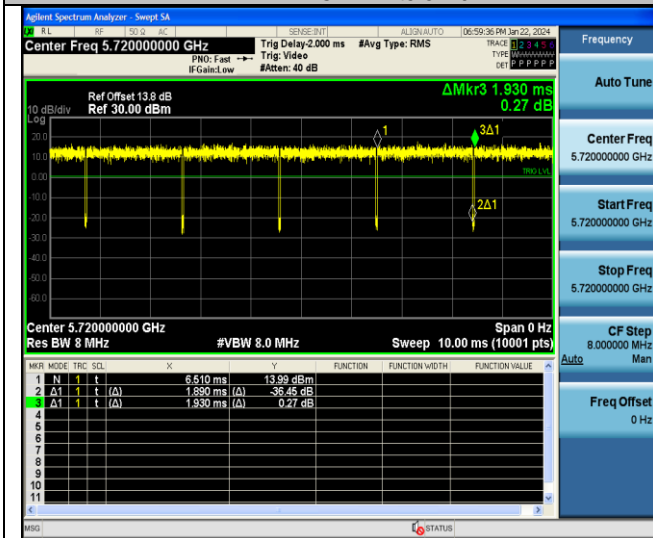
Test Graphs Straddle Channel



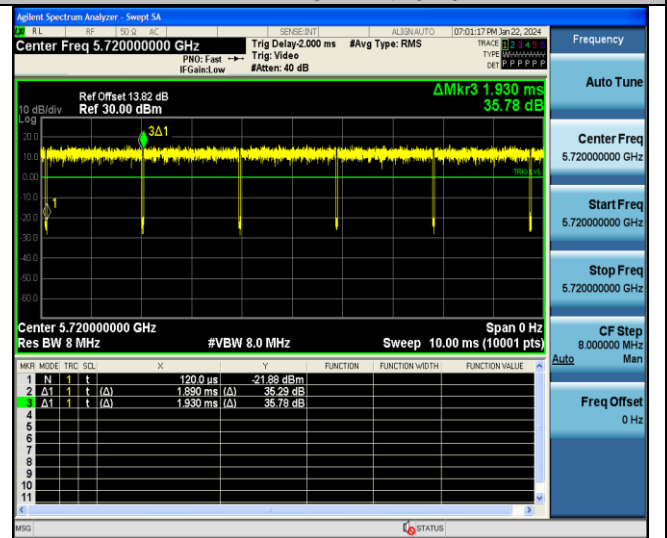
NTNV-11A-CDD-Ant6-5720



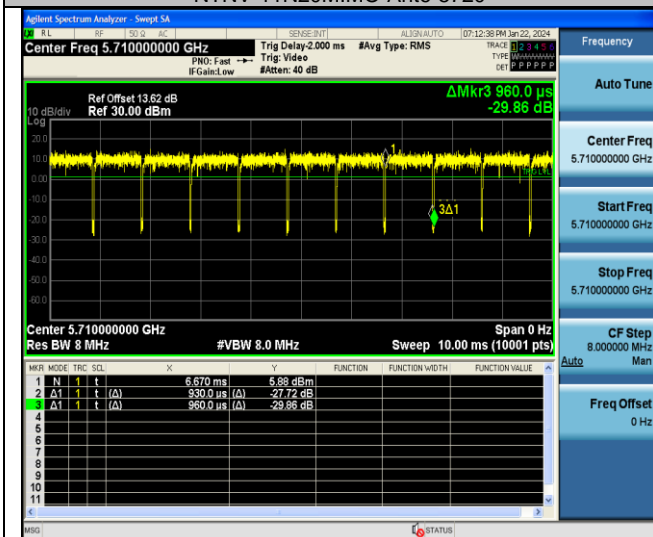
NTNV-11A-CDD-Ant7-5720



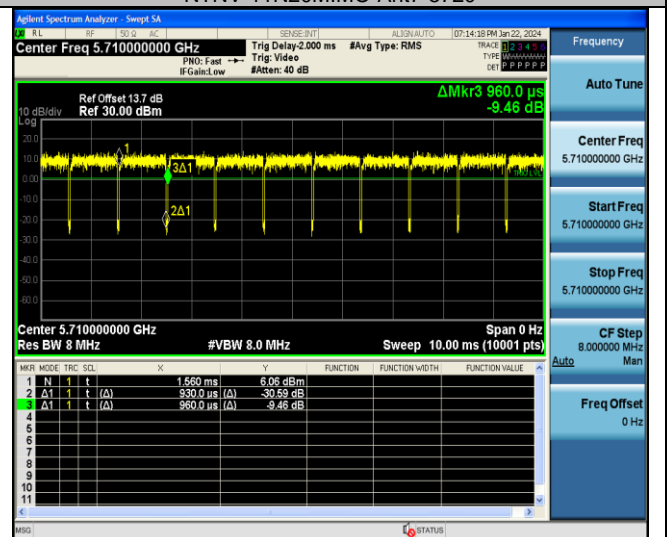
NTNV-11N20MIMO-Ant6-5720



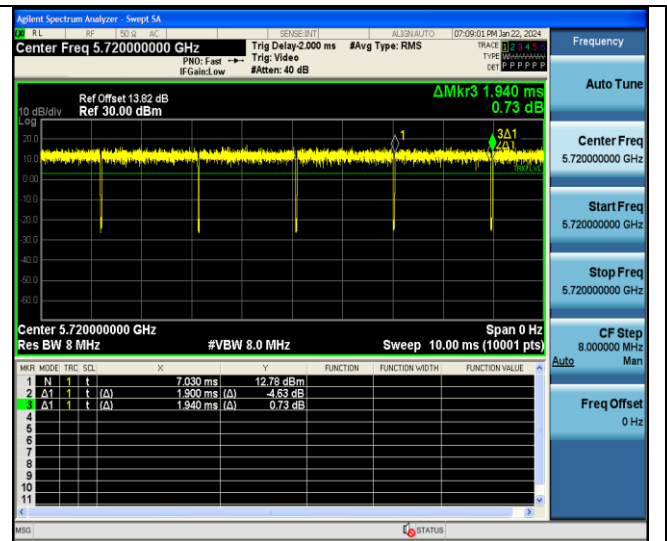
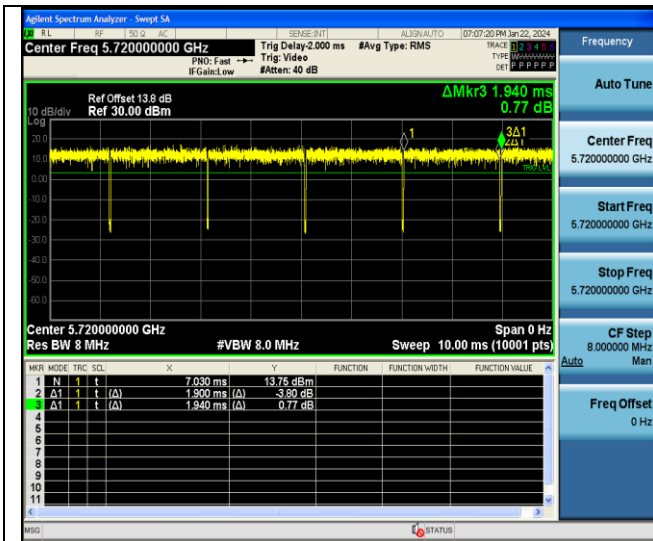
NTNV-11N20MIMO-Ant7-5720



NTNV-11N40MIMO-Ant6-5710

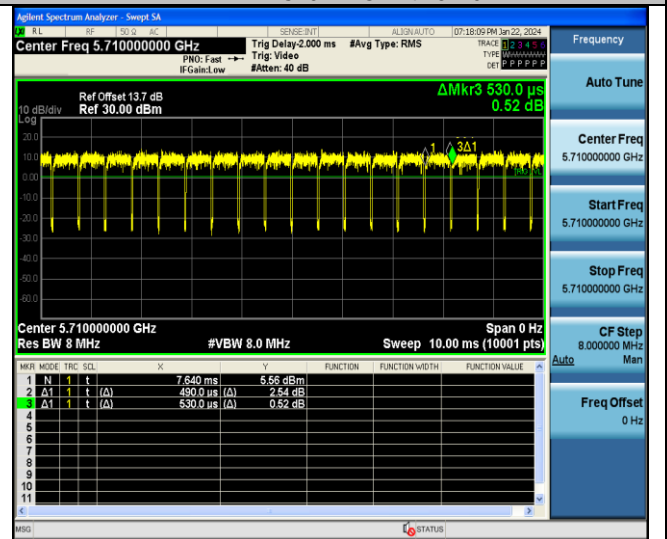
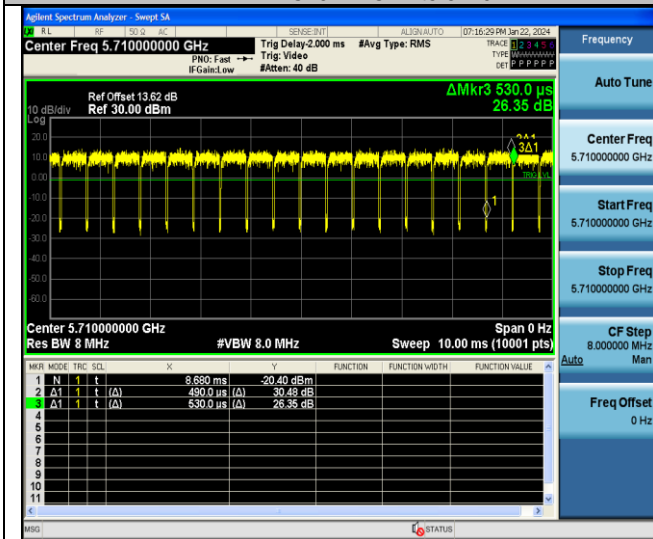


NTNV-11N40MIMO-Ant7-5710



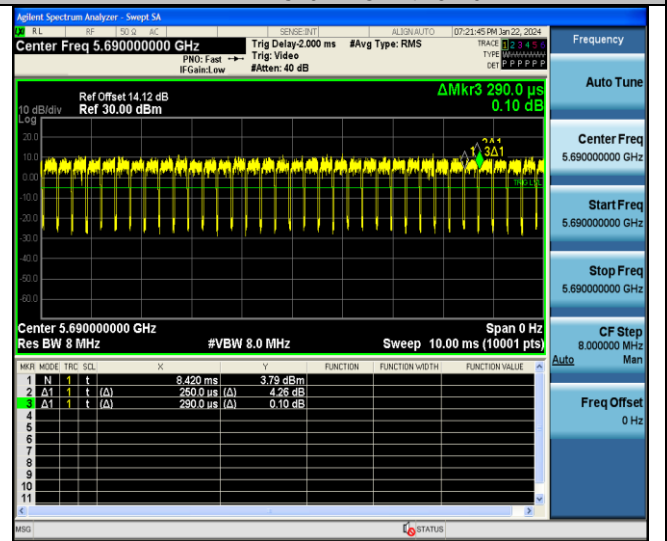
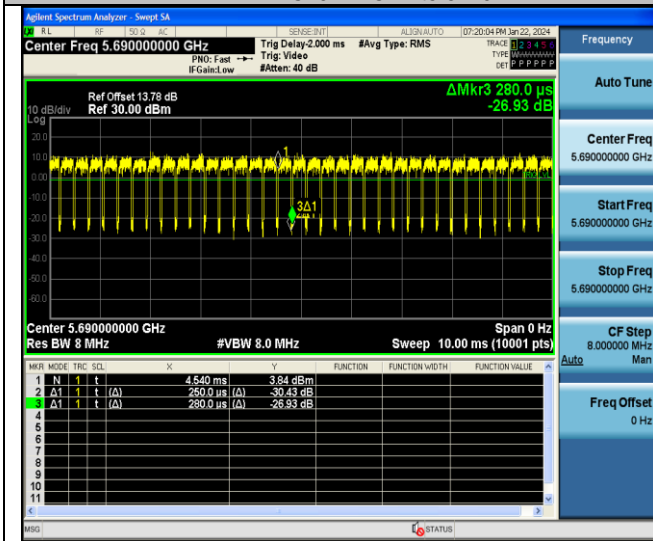
NTNV-11AC20MIMO-Ant6-5720

NTNV-11AC20MIMO-Ant7-5720



NTNV-11AC40MIMO-Ant6-5710

NTNV-11AC40MIMO-Ant7-5710



NTNV-11AC80MIMO-Ant6-5690

NTNV-11AC80MIMO-Ant7-5690

Maximum conducted output power FCC ID: PY7-64228M (Lead Model)

Test Result

Test Mode	Antenna	Frequency [MHz]	Result [dBm]	Limit [dBm]	Verdict
11A-CDD	Ant6	5180	9.89	≤23.98	PASS
11A-CDD	Ant7	5180	9.64	≤23.98	PASS
11A-CDD	total	5180	12.78	≤23.98	PASS
11A-CDD	Ant6	5200	10.02	≤23.98	PASS
11A-CDD	Ant7	5200	9.89	≤23.98	PASS
11A-CDD	total	5200	12.97	≤23.98	PASS
11A-CDD	Ant6	5240	10.09	≤23.98	PASS
11A-CDD	Ant7	5240	9.17	≤23.98	PASS
11A-CDD	total	5240	12.66	≤23.98	PASS
11A-CDD	Ant6	5260	9.74	≤23.98	PASS
11A-CDD	Ant7	5260	9.77	≤23.98	PASS
11A-CDD	total	5260	12.77	≤23.98	PASS
11A-CDD	Ant6	5300	10.25	≤23.98	PASS
11A-CDD	Ant7	5300	9.82	≤23.98	PASS
11A-CDD	total	5300	13.05	≤23.98	PASS
11A-CDD	Ant6	5320	10.31	≤23.98	PASS
11A-CDD	Ant7	5320	9.65	≤23.98	PASS
11A-CDD	total	5320	13.00	≤23.98	PASS
11A-CDD	Ant6	5500	9.66	≤23.98	PASS
11A-CDD	Ant7	5500	9.76	≤23.98	PASS
11A-CDD	total	5500	12.72	≤23.98	PASS
11A-CDD	Ant6	5600	9.81	≤23.98	PASS
11A-CDD	Ant7	5600	9.38	≤23.98	PASS
11A-CDD	total	5600	12.61	≤23.98	PASS
11A-CDD	Ant6	5700	9.58	≤23.98	PASS
11A-CDD	Ant7	5700	9.32	≤23.98	PASS
11A-CDD	total	5700	12.46	≤23.98	PASS
11A-CDD	Ant6	5745	10.12	≤30.00	PASS
11A-CDD	Ant7	5745	9.55	≤30.00	PASS
11A-CDD	total	5745	12.85	≤30.00	PASS
11A-CDD	Ant6	5785	10.44	≤30.00	PASS
11A-CDD	Ant7	5785	9.43	≤30.00	PASS
11A-CDD	total	5785	12.97	≤30.00	PASS
11A-CDD	Ant6	5825	10.24	≤30.00	PASS
11A-CDD	Ant7	5825	9.20	≤30.00	PASS
11A-CDD	total	5825	12.76	≤30.00	PASS
11A-CDD	Ant6	5720_UNII-2C	10.03	≤22.95	PASS
11A-CDD	Ant7	5720_UNII-2C	9.80	≤23.17	PASS
11A-CDD	total	5720_UNII-2C	12.93	≤23.98	PASS
11A-CDD	Ant6	5720_UNII-3	4.43	≤30.00	PASS
11A-CDD	Ant7	5720_UNII-3	2.87	≤30.00	PASS
11A-CDD	total	5720_UNII-3	6.73	≤30.00	PASS
11N20MIMO	Ant6	5180	9.21	≤23.98	PASS
11N20MIMO	Ant7	5180	9.32	≤23.98	PASS
11N20MIMO	total	5180	12.28	≤23.98	PASS
11N20MIMO	Ant6	5200	9.32	≤23.98	PASS
11N20MIMO	Ant7	5200	9.51	≤23.98	PASS
11N20MIMO	total	5200	12.43	≤23.98	PASS
11N20MIMO	Ant6	5240	9.39	≤23.98	PASS
11N20MIMO	Ant7	5240	9.09	≤23.98	PASS
11N20MIMO	total	5240	12.25	≤23.98	PASS
11N20MIMO	Ant6	5260	9.55	≤23.98	PASS
11N20MIMO	Ant7	5260	9.18	≤23.98	PASS
11N20MIMO	total	5260	12.38	≤23.98	PASS
11N20MIMO	Ant6	5300	10.06	≤23.98	PASS
11N20MIMO	Ant7	5300	9.21	≤23.98	PASS
11N20MIMO	total	5300	12.67	≤23.98	PASS
11N20MIMO	Ant6	5320	10.20	≤23.98	PASS
11N20MIMO	Ant7	5320	9.13	≤23.98	PASS
11N20MIMO	total	5320	12.71	≤23.98	PASS
11N20MIMO	Ant6	5500	9.97	≤23.98	PASS
11N20MIMO	Ant7	5500	9.67	≤23.98	PASS
11N20MIMO	total	5500	12.83	≤23.98	PASS
11N20MIMO	Ant6	5600	10.17	≤23.98	PASS
11N20MIMO	Ant7	5600	9.25	≤23.98	PASS

11N20MIMO	total	5600	12.74	≤23.98	PASS
11N20MIMO	Ant6	5700	9.89	≤23.98	PASS
11N20MIMO	Ant7	5700	9.23	≤23.98	PASS
11N20MIMO	total	5700	12.58	≤23.98	PASS
11N20MIMO	Ant6	5745	10.09	≤30.00	PASS
11N20MIMO	Ant7	5745	9.42	≤30.00	PASS
11N20MIMO	total	5745	12.78	≤30.00	PASS
11N20MIMO	Ant6	5785	10.29	≤30.00	PASS
11N20MIMO	Ant7	5785	9.36	≤30.00	PASS
11N20MIMO	total	5785	12.86	≤30.00	PASS
11N20MIMO	Ant6	5825	10.10	≤30.00	PASS
11N20MIMO	Ant7	5825	9.18	≤30.00	PASS
11N20MIMO	total	5825	12.67	≤30.00	PASS
11N20MIMO	Ant6	5720_UNII-2C	9.80	≤23.06	PASS
11N20MIMO	Ant7	5720_UNII-2C	9.59	≤23.30	PASS
11N20MIMO	total	5720_UNII-2C	12.71	≤23.98	PASS
11N20MIMO	Ant6	5720_UNII-3	4.73	≤30.00	PASS
11N20MIMO	Ant7	5720_UNII-3	3.19	≤30.00	PASS
11N20MIMO	total	5720_UNII-3	7.04	≤30.00	PASS
11N40MIMO	Ant6	5190	9.76	≤23.98	PASS
11N40MIMO	Ant7	5190	9.62	≤23.98	PASS
11N40MIMO	total	5190	12.70	≤23.98	PASS
11N40MIMO	Ant6	5230	9.73	≤23.98	PASS
11N40MIMO	Ant7	5230	9.51	≤23.98	PASS
11N40MIMO	total	5230	12.63	≤23.98	PASS
11N40MIMO	Ant6	5270	10.55	≤23.98	PASS
11N40MIMO	Ant7	5270	9.54	≤23.98	PASS
11N40MIMO	total	5270	13.08	≤23.98	PASS
11N40MIMO	Ant6	5310	10.67	≤23.98	PASS
11N40MIMO	Ant7	5310	9.63	≤23.98	PASS
11N40MIMO	total	5310	13.19	≤23.98	PASS
11N40MIMO	Ant6	5510	10.44	≤23.98	PASS
11N40MIMO	Ant7	5510	9.88	≤23.98	PASS
11N40MIMO	total	5510	13.18	≤23.98	PASS
11N40MIMO	Ant6	5590	10.57	≤23.98	PASS
11N40MIMO	Ant7	5590	9.65	≤23.98	PASS
11N40MIMO	total	5590	13.14	≤23.98	PASS
11N40MIMO	Ant6	5670	10.37	≤23.98	PASS
11N40MIMO	Ant7	5670	9.67	≤23.98	PASS
11N40MIMO	total	5670	13.04	≤23.98	PASS
11N40MIMO	Ant6	5755	10.58	≤30.00	PASS
11N40MIMO	Ant7	5755	9.25	≤30.00	PASS
11N40MIMO	total	5755	12.98	≤30.00	PASS
11N40MIMO	Ant6	5795	10.66	≤30.00	PASS
11N40MIMO	Ant7	5795	9.10	≤30.00	PASS
11N40MIMO	total	5795	12.96	≤30.00	PASS
11N40MIMO	Ant6	5710_UNII-2C	10.93	≤23.98	PASS
11N40MIMO	Ant7	5710_UNII-2C	10.42	≤23.98	PASS
11N40MIMO	total	5710_UNII-2C	13.69	≤23.98	PASS
11N40MIMO	Ant6	5710_UNII-3	1.24	≤30.00	PASS
11N40MIMO	Ant7	5710_UNII-3	-0.58	≤30.00	PASS
11N40MIMO	total	5710_UNII-3	3.43	≤30.00	PASS
11AC20MIMO	Ant6	5180	9.21	≤23.98	PASS
11AC20MIMO	Ant7	5180	9.94	≤23.98	PASS
11AC20MIMO	total	5180	12.60	≤23.98	PASS
11AC20MIMO	Ant6	5200	9.30	≤23.98	PASS
11AC20MIMO	Ant7	5200	10.27	≤23.98	PASS
11AC20MIMO	total	5200	12.82	≤23.98	PASS
11AC20MIMO	Ant6	5240	9.41	≤23.98	PASS
11AC20MIMO	Ant7	5240	10.38	≤23.98	PASS
11AC20MIMO	total	5240	12.93	≤23.98	PASS
11AC20MIMO	Ant6	5260	9.04	≤23.98	PASS
11AC20MIMO	Ant7	5260	9.97	≤23.98	PASS
11AC20MIMO	total	5260	12.54	≤23.98	PASS
11AC20MIMO	Ant6	5300	9.51	≤23.98	PASS
11AC20MIMO	Ant7	5300	9.85	≤23.98	PASS
11AC20MIMO	total	5300	12.69	≤23.98	PASS
11AC20MIMO	Ant6	5320	9.65	≤23.98	PASS
11AC20MIMO	Ant7	5320	9.90	≤23.98	PASS
11AC20MIMO	total	5320	12.79	≤23.98	PASS
11AC20MIMO	Ant6	5500	10.00	≤23.98	PASS
11AC20MIMO	Ant7	5500	9.58	≤23.98	PASS
11AC20MIMO	total	5500	12.81	≤23.98	PASS
11AC20MIMO	Ant6	5600	10.18	≤23.98	PASS
11AC20MIMO	Ant7	5600	9.17	≤23.98	PASS

11AC20MIMO	total	5600	12.71	≤23.98	PASS
11AC20MIMO	Ant6	5700	9.89	≤23.98	PASS
11AC20MIMO	Ant7	5700	9.14	≤23.98	PASS
11AC20MIMO	total	5700	12.54	≤23.98	PASS
11AC20MIMO	Ant6	5745	10.08	≤30.00	PASS
11AC20MIMO	Ant7	5745	9.71	≤30.00	PASS
11AC20MIMO	total	5745	12.91	≤30.00	PASS
11AC20MIMO	Ant6	5785	10.30	≤30.00	PASS
11AC20MIMO	Ant7	5785	9.53	≤30.00	PASS
11AC20MIMO	total	5785	12.94	≤30.00	PASS
11AC20MIMO	Ant6	5825	10.07	≤30.00	PASS
11AC20MIMO	Ant7	5825	9.41	≤30.00	PASS
11AC20MIMO	total	5825	12.76	≤30.00	PASS
11AC20MIMO	Ant6	5720_UNII-2C	9.81	≤23.10	PASS
11AC20MIMO	Ant7	5720_UNII-2C	9.61	≤23.27	PASS
11AC20MIMO	total	5720_UNII-2C	12.72	≤23.98	PASS
11AC20MIMO	Ant6	5720_UNII-3	4.77	≤30.00	PASS
11AC20MIMO	Ant7	5720_UNII-3	3.22	≤30.00	PASS
11AC20MIMO	total	5720_UNII-3	7.07	≤30.00	PASS
11AC40MIMO	Ant6	5190	9.74	≤23.98	PASS
11AC40MIMO	Ant7	5190	9.63	≤23.98	PASS
11AC40MIMO	total	5190	12.70	≤23.98	PASS
11AC40MIMO	Ant6	5230	9.71	≤23.98	PASS
11AC40MIMO	Ant7	5230	9.45	≤23.98	PASS
11AC40MIMO	total	5230	12.59	≤23.98	PASS
11AC40MIMO	Ant6	5270	10.04	≤23.98	PASS
11AC40MIMO	Ant7	5270	9.66	≤23.98	PASS
11AC40MIMO	total	5270	12.86	≤23.98	PASS
11AC40MIMO	Ant6	5310	9.97	≤23.98	PASS
11AC40MIMO	Ant7	5310	9.72	≤23.98	PASS
11AC40MIMO	total	5310	12.86	≤23.98	PASS
11AC40MIMO	Ant6	5510	10.48	≤23.98	PASS
11AC40MIMO	Ant7	5510	9.91	≤23.98	PASS
11AC40MIMO	total	5510	13.21	≤23.98	PASS
11AC40MIMO	Ant6	5590	10.60	≤23.98	PASS
11AC40MIMO	Ant7	5590	9.69	≤23.98	PASS
11AC40MIMO	total	5590	13.18	≤23.98	PASS
11AC40MIMO	Ant6	5670	10.34	≤23.98	PASS
11AC40MIMO	Ant7	5670	9.58	≤23.98	PASS
11AC40MIMO	total	5670	12.99	≤23.98	PASS
11AC40MIMO	Ant6	5755	10.11	≤30.00	PASS
11AC40MIMO	Ant7	5755	9.20	≤30.00	PASS
11AC40MIMO	total	5755	12.69	≤30.00	PASS
11AC40MIMO	Ant6	5795	10.19	≤30.00	PASS
11AC40MIMO	Ant7	5795	9.07	≤30.00	PASS
11AC40MIMO	total	5795	12.68	≤30.00	PASS
11AC40MIMO	Ant6	5710_UNII-2C	10.68	≤23.98	PASS
11AC40MIMO	Ant7	5710_UNII-2C	10.15	≤23.98	PASS
11AC40MIMO	total	5710_UNII-2C	13.43	≤23.98	PASS
11AC40MIMO	Ant6	5710_UNII-3	-0.23	≤30.00	PASS
11AC40MIMO	Ant7	5710_UNII-3	-0.46	≤30.00	PASS
11AC40MIMO	total	5710_UNII-3	2.67	≤30.00	PASS
11AC80MIMO	Ant6	5210	9.92	≤23.98	PASS
11AC80MIMO	Ant7	5210	9.80	≤23.98	PASS
11AC80MIMO	total	5210	12.87	≤23.98	PASS
11AC80MIMO	Ant6	5290	10.44	≤23.98	PASS
11AC80MIMO	Ant7	5290	10.09	≤23.98	PASS
11AC80MIMO	total	5290	13.28	≤23.98	PASS
11AC80MIMO	Ant6	5530	10.11	≤23.98	PASS
11AC80MIMO	Ant7	5530	10.73	≤23.98	PASS
11AC80MIMO	total	5530	13.44	≤23.98	PASS
11AC80MIMO	Ant6	5610	10.24	≤23.98	PASS
11AC80MIMO	Ant7	5610	10.55	≤23.98	PASS
11AC80MIMO	total	5610	13.41	≤23.98	PASS
11AC80MIMO	Ant6	5775	10.24	≤30.00	PASS
11AC80MIMO	Ant7	5775	10.06	≤30.00	PASS
11AC80MIMO	total	5775	13.16	≤30.00	PASS
11AC80MIMO	Ant6	5690_UNII-2C	10.74	≤23.98	PASS
11AC80MIMO	Ant7	5690_UNII-2C	10.20	≤23.98	PASS
11AC80MIMO	total	5690_UNII-2C	13.49	≤23.98	PASS
11AC80MIMO	Ant6	5690_UNII-3	-3.35	≤30.00	PASS
11AC80MIMO	Ant7	5690_UNII-3	-3.18	≤30.00	PASS
11AC80MIMO	total	5690_UNII-3	-0.25	≤30.00	PASS

Note: The Duty Cycle Factor is compensated in the graph.

FCC ID: PY7-73716J (This Model)

Test Mode	Antenna	Frequency [MHz]	Result [dBm]	Limit [dBm]	Verdict
11A-CDD	Ant6	5200	9.63	≤23.98	PASS
11A-CDD	Ant7	5200	9.49	≤23.98	PASS
11A-CDD	total	5200	12.57	≤23.98	PASS
11A-CDD	Ant6	5300	10.45	≤23.98	PASS
11A-CDD	Ant7	5300	9.32	≤23.98	PASS
11A-CDD	total	5300	12.93	≤23.98	PASS
11A-CDD	Ant6	5500	9.85	≤23.98	PASS
11A-CDD	Ant7	5500	9.96	≤23.98	PASS
11A-CDD	total	5500	12.92	≤23.98	PASS
11A-CDD	Ant6	5785	10.51	≤30.00	PASS
11A-CDD	Ant7	5785	9.79	≤30.00	PASS
11A-CDD	total	5785	13.18	≤30.00	PASS
11N20MIMO	Ant6	5200	9.31	≤23.98	PASS
11N20MIMO	Ant7	5200	9.42	≤23.98	PASS
11N20MIMO	total	5200	12.38	≤23.98	PASS
11N20MIMO	Ant6	5320	10.22	≤23.98	PASS
11N20MIMO	Ant7	5320	9.18	≤23.98	PASS
11N20MIMO	total	5320	12.74	≤23.98	PASS
11N20MIMO	Ant6	5500	10.05	≤23.98	PASS
11N20MIMO	Ant7	5500	9.63	≤23.98	PASS
11N20MIMO	total	5500	12.86	≤23.98	PASS
11N20MIMO	Ant6	5785	10.48	≤30.00	PASS
11N20MIMO	Ant7	5785	9.49	≤30.00	PASS
11N20MIMO	total	5785	13.02	≤30.00	PASS
11N40MIMO	Ant6	5190	9.79	≤23.98	PASS
11N40MIMO	Ant7	5190	9.52	≤23.98	PASS
11N40MIMO	total	5190	12.67	≤23.98	PASS
11N40MIMO	Ant6	5310	11.47	≤23.98	PASS
11N40MIMO	Ant7	5310	9.33	≤23.98	PASS
11N40MIMO	total	5310	13.54	≤23.98	PASS
11N40MIMO	Ant6	5510	10.67	≤23.98	PASS
11N40MIMO	Ant7	5510	10.01	≤23.98	PASS
11N40MIMO	total	5510	13.36	≤23.98	PASS
11N40MIMO	Ant6	5755	10.89	≤30.00	PASS
11N40MIMO	Ant7	5755	9.33	≤30.00	PASS
11N40MIMO	total	5755	13.19	≤30.00	PASS
11AC20MIMO	Ant6	5240	9.87	≤23.98	PASS
11AC20MIMO	Ant7	5240	10.00	≤23.98	PASS
11AC20MIMO	total	5240	12.95	≤23.98	PASS
11AC20MIMO	Ant6	5320	9.51	≤23.98	PASS
11AC20MIMO	Ant7	5320	9.51	≤23.98	PASS
11AC20MIMO	total	5320	12.52	≤23.98	PASS
11AC20MIMO	Ant6	5500	9.58	≤23.98	PASS
11AC20MIMO	Ant7	5500	9.80	≤23.98	PASS
11AC20MIMO	total	5500	12.70	≤23.98	PASS
11AC20MIMO	Ant6	5785	10.02	≤30.00	PASS
11AC20MIMO	Ant7	5785	9.51	≤30.00	PASS
11AC20MIMO	total	5785	12.78	≤30.00	PASS
11AC40MIMO	Ant6	5190	9.65	≤23.98	PASS
11AC40MIMO	Ant7	5190	9.39	≤23.98	PASS
11AC40MIMO	total	5190	12.53	≤23.98	PASS
11AC40MIMO	Ant6	5270	9.94	≤23.98	PASS
11AC40MIMO	Ant7	5270	9.18	≤23.98	PASS
11AC40MIMO	total	5270	12.59	≤23.98	PASS
11AC40MIMO	Ant6	5510	10.29	≤23.98	PASS
11AC40MIMO	Ant7	5510	10.28	≤23.98	PASS
11AC40MIMO	total	5510	13.30	≤23.98	PASS
11AC40MIMO	Ant6	5755	10.05	≤30.00	PASS
11AC40MIMO	Ant7	5755	9.51	≤30.00	PASS
11AC40MIMO	total	5755	12.80	≤30.00	PASS
11AC80MIMO	Ant6	5210	10.19	≤23.98	PASS
11AC80MIMO	Ant7	5210	10.26	≤23.98	PASS
11AC80MIMO	total	5210	13.24	≤23.98	PASS
11AC80MIMO	Ant6	5290	10.34	≤23.98	PASS
11AC80MIMO	Ant7	5290	10.36	≤23.98	PASS
11AC80MIMO	total	5290	13.36	≤23.98	PASS
11AC80MIMO	Ant6	5530	9.90	≤23.98	PASS
11AC80MIMO	Ant7	5530	10.57	≤23.98	PASS
11AC80MIMO	total	5530	13.26	≤23.98	PASS
11AC80MIMO	Ant6	5775	10.23	≤30.00	PASS

11AC80MIMO	Ant7	5775	9.63	≤30.00	PASS
11AC80MIMO	total	5775	12.95	≤30.00	PASS

Note: The Duty Cycle Factor is compensated in the graph.

Maximum power spectral density Test Result

TestMode	Antenna	Frequency[MHz]	Result [dBm/MHz]	Limit[dBm/MHz]	Verdict
11A-CDD	Ant6	5180	0.04	≤11.00	PASS
11A-CDD	Ant7	5180	-0.56	≤11.00	PASS
11A-CDD	total	5180	2.76	≤11.00	PASS
11A-CDD	Ant6	5200	-0.62	≤11.00	PASS
11A-CDD	Ant7	5200	-0.80	≤11.00	PASS
11A-CDD	total	5200	2.30	≤11.00	PASS
11A-CDD	Ant6	5240	-0.93	≤11.00	PASS
11A-CDD	Ant7	5240	-0.78	≤11.00	PASS
11A-CDD	total	5240	2.16	≤11.00	PASS
11A-CDD	Ant6	5260	-0.93	≤11.00	PASS
11A-CDD	Ant7	5260	-0.56	≤11.00	PASS
11A-CDD	total	5260	2.27	≤11.00	PASS
11A-CDD	Ant6	5300	-0.79	≤11.00	PASS
11A-CDD	Ant7	5300	-0.15	≤11.00	PASS
11A-CDD	total	5300	2.55	≤11.00	PASS
11A-CDD	Ant6	5320	-1.40	≤11.00	PASS
11A-CDD	Ant7	5320	-0.98	≤11.00	PASS
11A-CDD	total	5320	1.83	≤11.00	PASS
11A-CDD	Ant6	5500	-1.03	≤11.00	PASS
11A-CDD	Ant7	5500	-0.24	≤11.00	PASS
11A-CDD	total	5500	2.39	≤11.00	PASS
11A-CDD	Ant6	5600	-0.90	≤11.00	PASS
11A-CDD	Ant7	5600	-0.50	≤11.00	PASS
11A-CDD	total	5600	2.31	≤11.00	PASS
11A-CDD	Ant6	5700	-1.22	≤11.00	PASS
11A-CDD	Ant7	5700	-1.46	≤11.00	PASS
11A-CDD	total	5700	1.67	≤11.00	PASS
11A-CDD	Ant6	5745	-4.14	≤30.00	PASS
11A-CDD	Ant7	5745	-3.73	≤30.00	PASS
11A-CDD	total	5745	-0.92	≤30.00	PASS
11A-CDD	Ant6	5785	-3.46	≤30.00	PASS
11A-CDD	Ant7	5785	-3.71	≤30.00	PASS
11A-CDD	total	5785	-0.57	≤30.00	PASS
11A-CDD	Ant6	5825	-3.80	≤30.00	PASS
11A-CDD	Ant7	5825	-3.71	≤30.00	PASS
11A-CDD	total	5825	-0.74	≤30.00	PASS
11A-CDD	Ant6	5720_UNII-2C	0.61	≤11.00	PASS
11A-CDD	Ant7	5720_UNII-2C	0.00	≤11.00	PASS
11A-CDD	total	5720_UNII-2C	3.33	≤11.00	PASS
11A-CDD	Ant6	5720_UNII-3	-2.70	≤30.00	PASS
11A-CDD	Ant7	5720_UNII-3	-4.21	≤30.00	PASS
11A-CDD	total	5720_UNII-3	-0.38	≤30.00	PASS
11N20MIMO	Ant6	5180	-1.95	≤11.00	PASS
11N20MIMO	Ant7	5180	-1.67	≤11.00	PASS
11N20MIMO	total	5180	1.20	≤11.00	PASS
11N20MIMO	Ant6	5200	-1.87	≤11.00	PASS
11N20MIMO	Ant7	5200	-1.39	≤11.00	PASS
11N20MIMO	total	5200	1.39	≤11.00	PASS
11N20MIMO	Ant6	5240	-1.94	≤11.00	PASS
11N20MIMO	Ant7	5240	-1.54	≤11.00	PASS
11N20MIMO	total	5240	1.27	≤11.00	PASS
11N20MIMO	Ant6	5260	-1.84	≤11.00	PASS
11N20MIMO	Ant7	5260	-1.07	≤11.00	PASS
11N20MIMO	total	5260	1.57	≤11.00	PASS
11N20MIMO	Ant6	5300	-1.46	≤11.00	PASS
11N20MIMO	Ant7	5300	-0.88	≤11.00	PASS
11N20MIMO	total	5300	1.85	≤11.00	PASS
11N20MIMO	Ant6	5320	-1.51	≤11.00	PASS
11N20MIMO	Ant7	5320	-1.42	≤11.00	PASS
11N20MIMO	total	5320	1.55	≤11.00	PASS
11N20MIMO	Ant6	5500	-0.56	≤11.00	PASS
11N20MIMO	Ant7	5500	-0.22	≤11.00	PASS
11N20MIMO	total	5500	2.62	≤11.00	PASS
11N20MIMO	Ant6	5600	-0.36	≤11.00	PASS
11N20MIMO	Ant7	5600	-0.62	≤11.00	PASS
11N20MIMO	total	5600	2.52	≤11.00	PASS
11N20MIMO	Ant6	5700	-1.67	≤11.00	PASS
11N20MIMO	Ant7	5700	-1.11	≤11.00	PASS